

SB1159

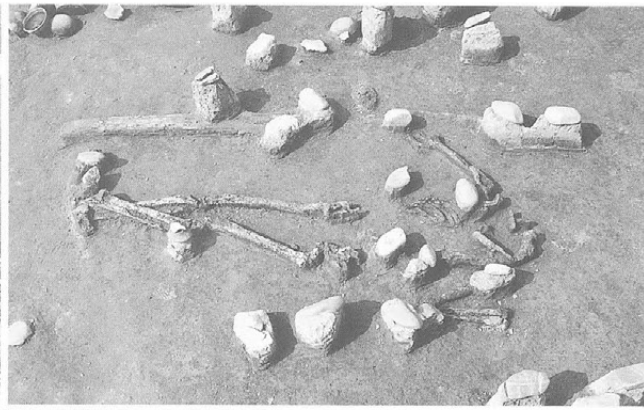


SB1212



SB1219

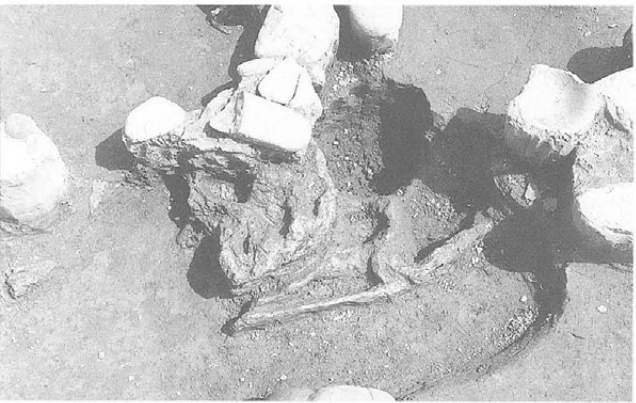




左 SB1219
土器出土状況
右 同
人骨出土状況



SB1262



同
人骨出土状況



SB1263

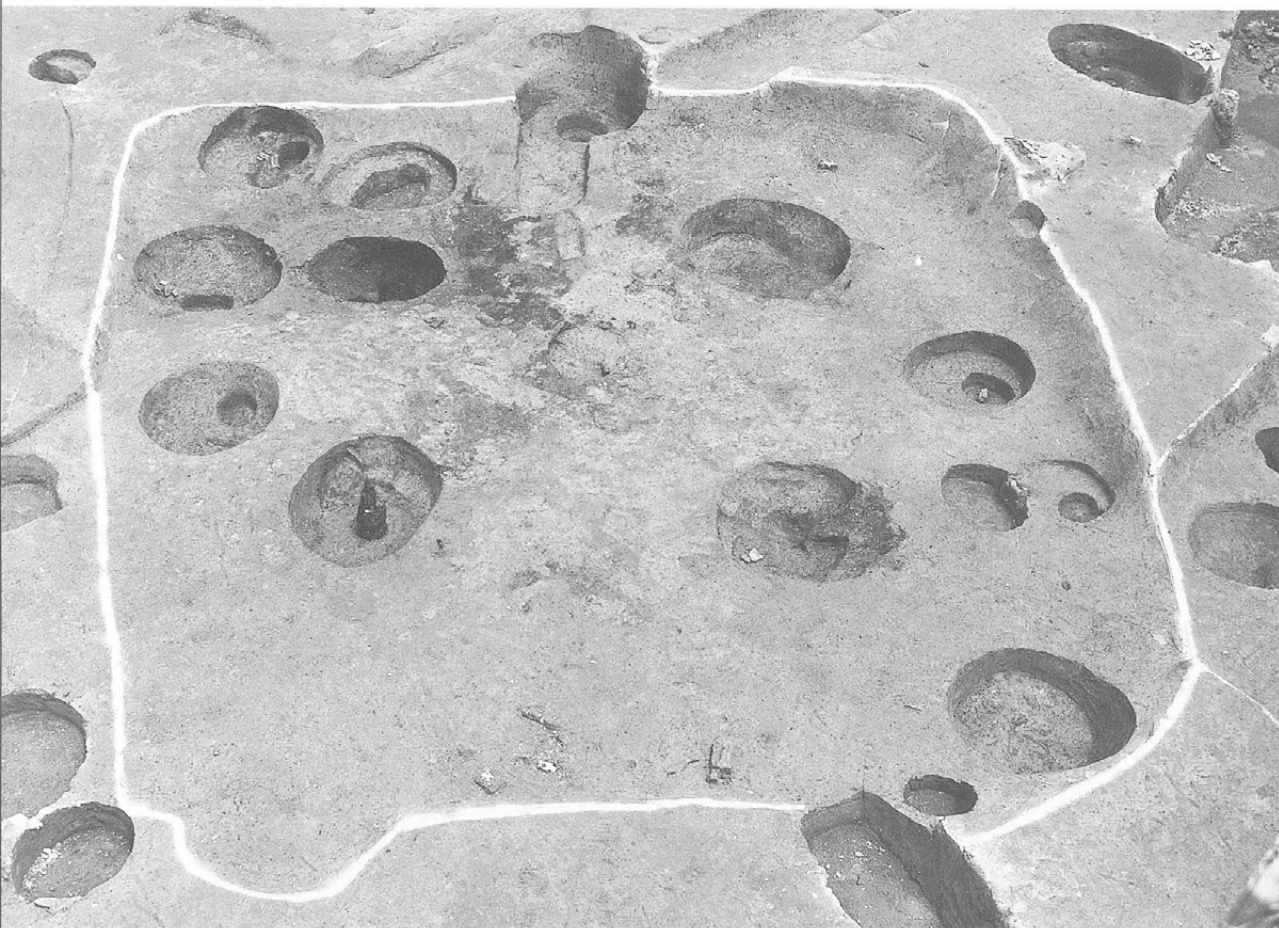


左 SB1264
土器出土状況
右 SB1427
勾玉出土状況



SB1427
遺物出土状況



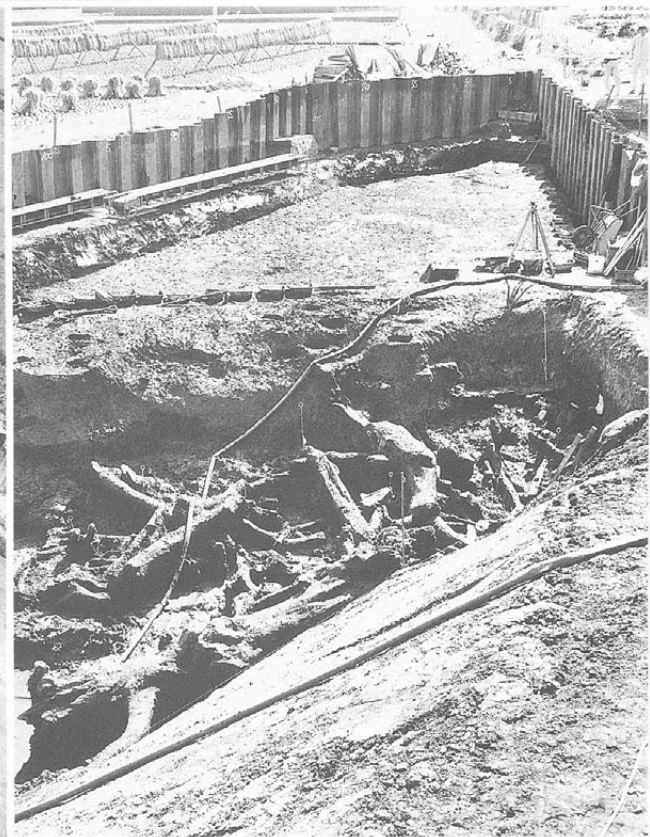


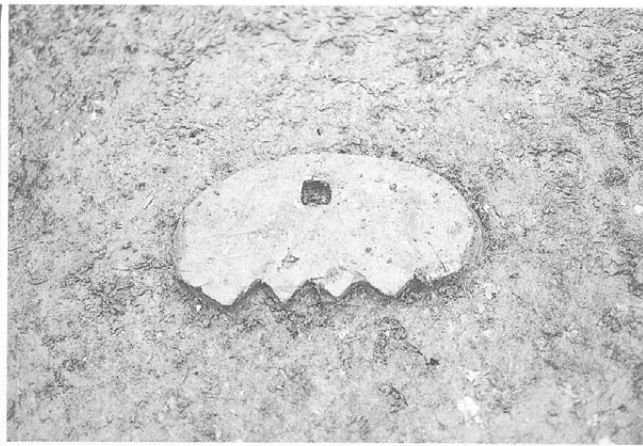
SB1427
完掘状況



SB1627

②-5地区 SG3
遺物出土状況

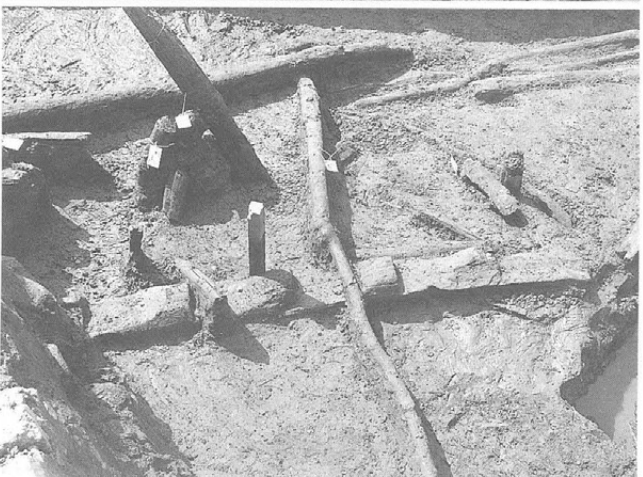




②-5地区 SG3
左 木道出土状況
右上 えぶり出土状況
右下 壺鏡出土状況



左 遺物出土状況
右上 農具出土状況
右下 曲柄平鋤
出土状況



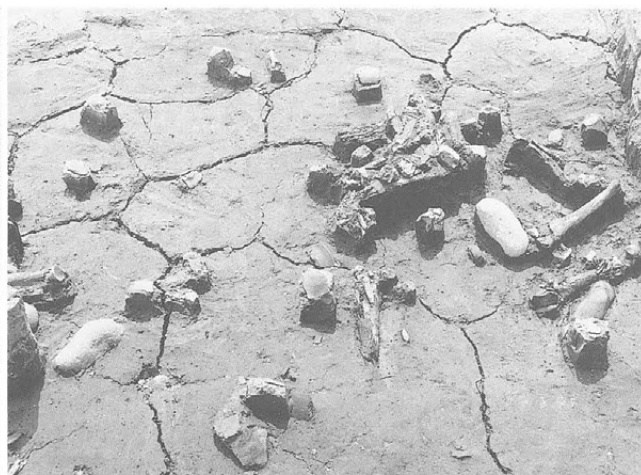
左 剝物出土状況
右 梯子出土状況

②-5地区 SG3

左 土器集中範圍

右上 動物骨出土狀況

右下 銅釧出土狀況



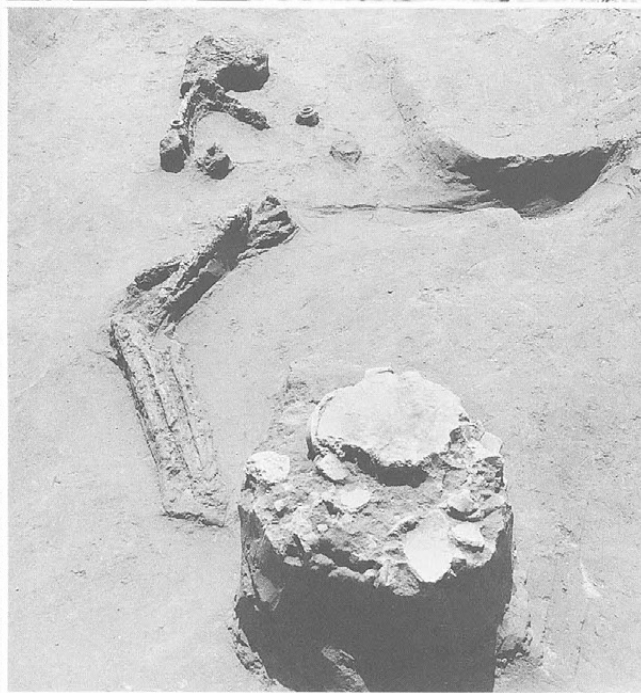
左上 ②-3A地区

土器集中範圍

左下 SD33

右 SD511

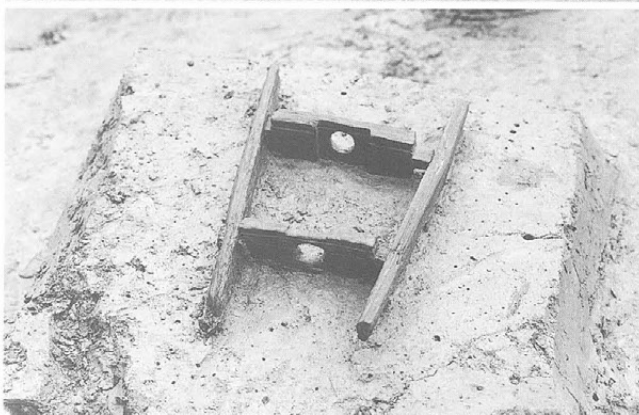
人骨・金環
出土狀況

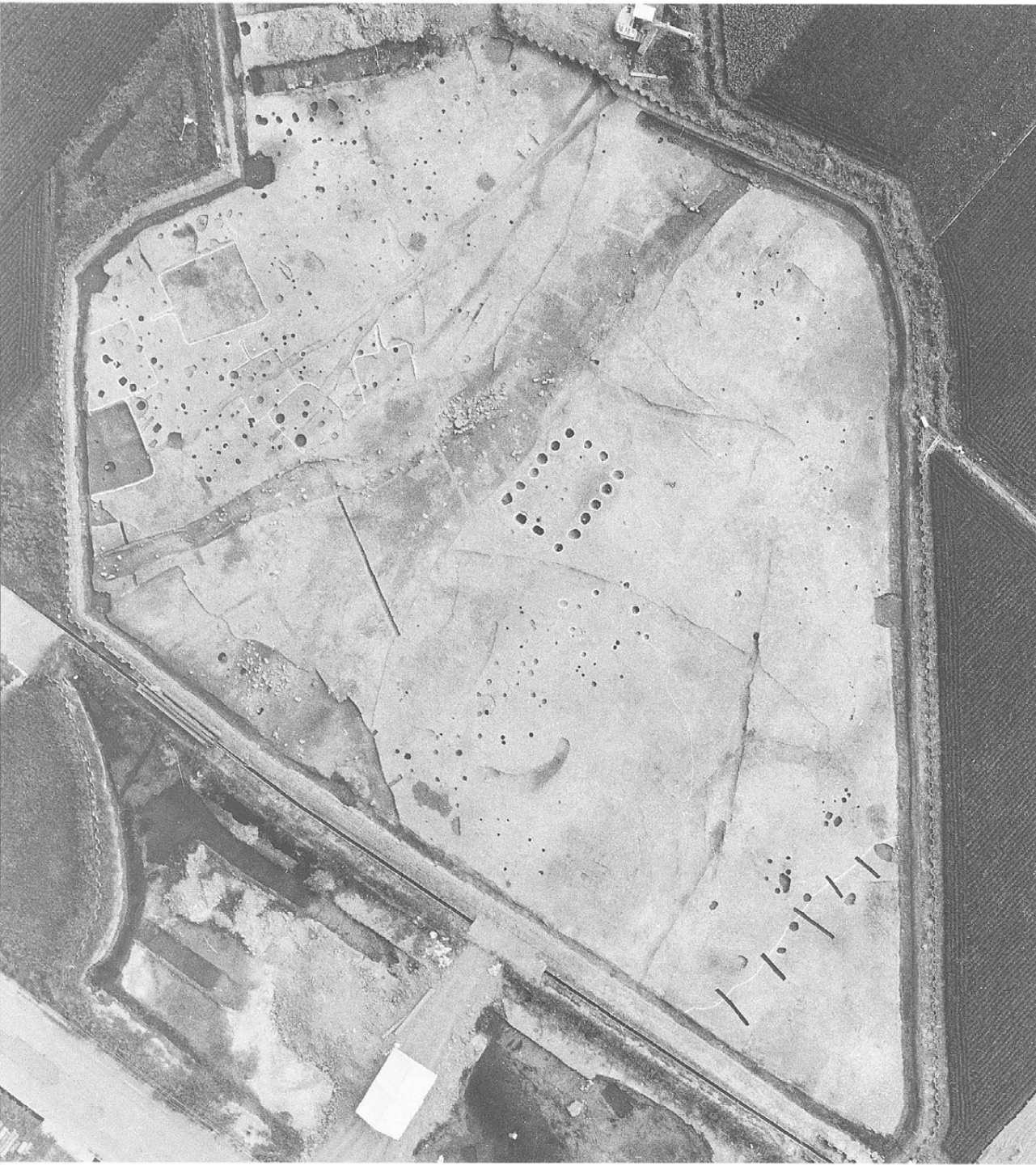


左 SD33

糸卷出土狀況

右 SK9048

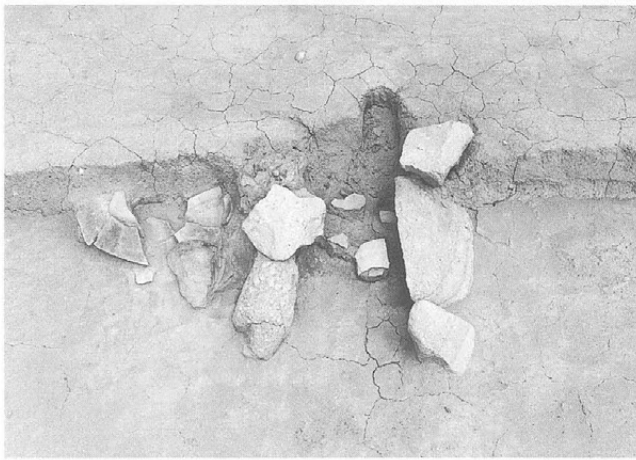




SB02



左 SB02
カマド
右 SB05
カマド

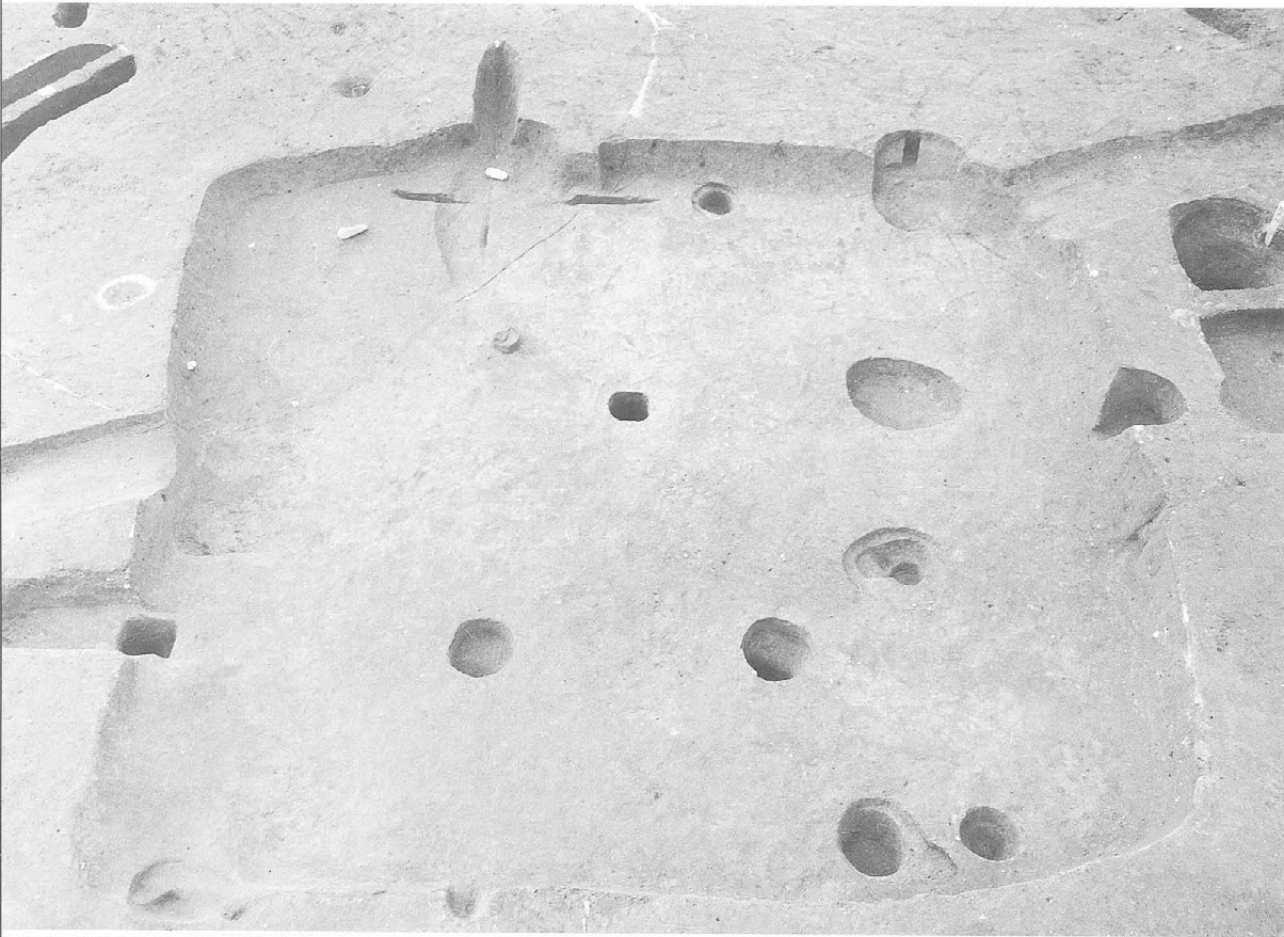


SB05



左 SB05 P3
土器出土状況
右 SB08
土器出土状況

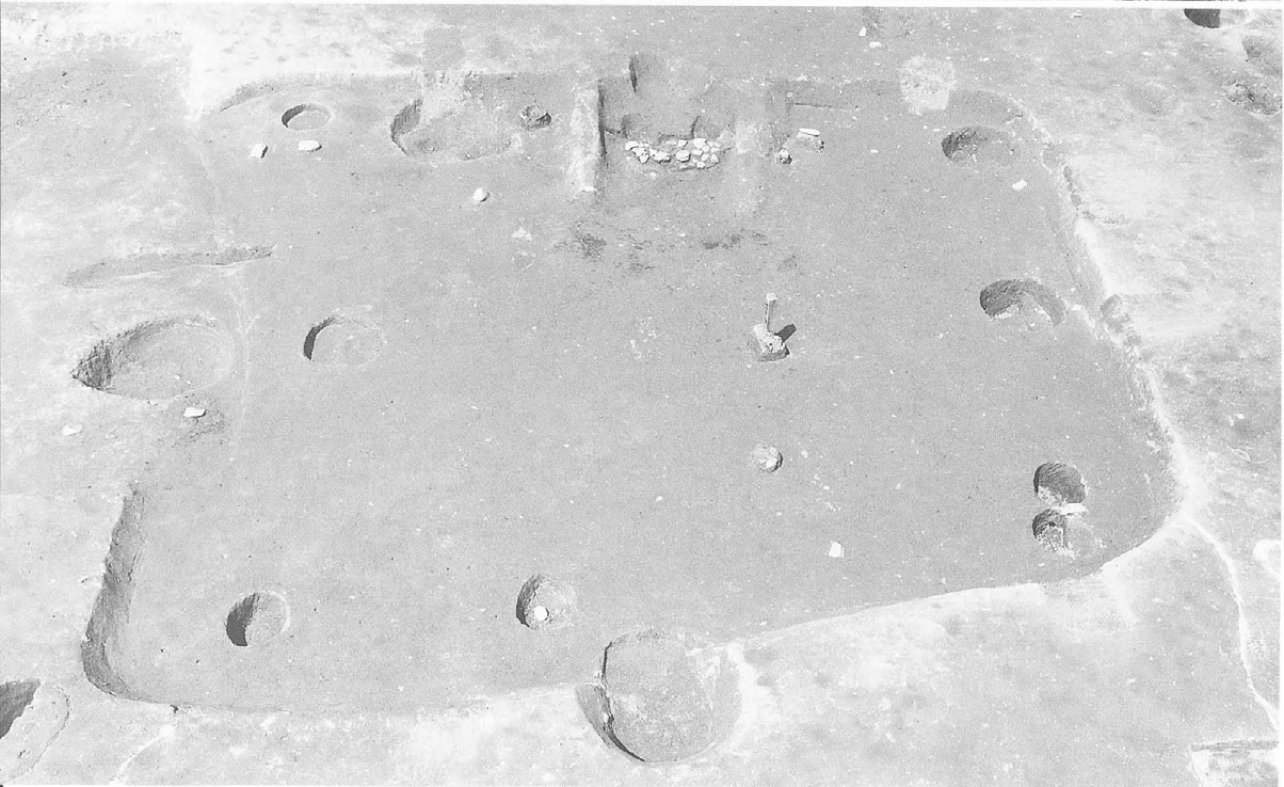




SB09



SB30



SB503

SB511



SB513

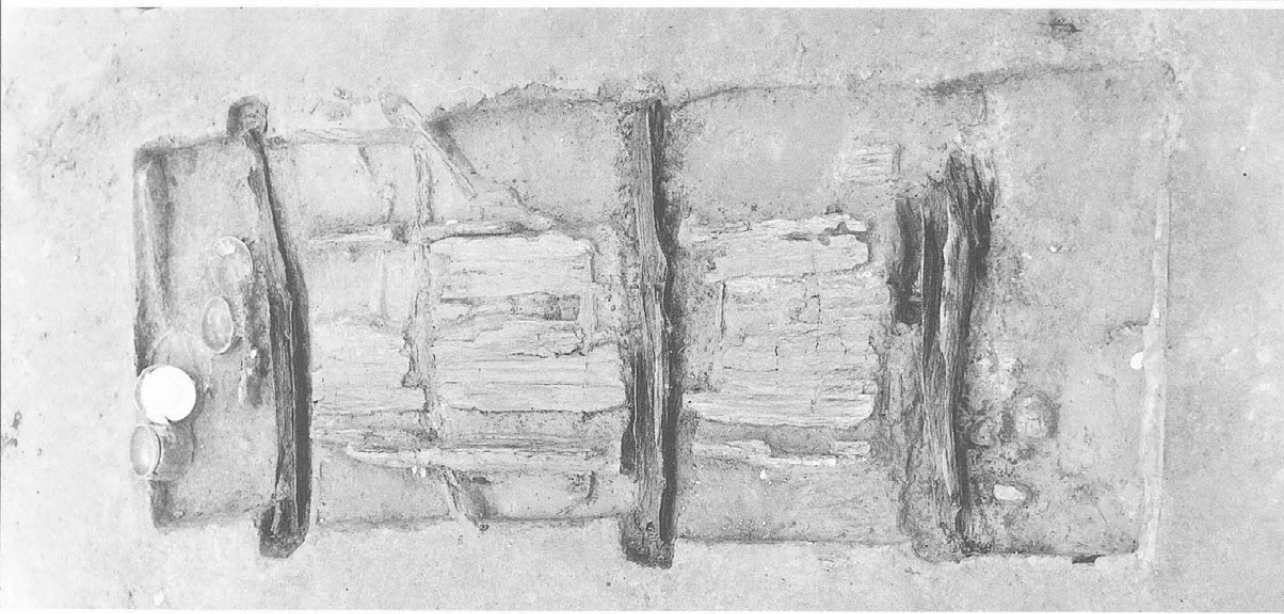


SB515

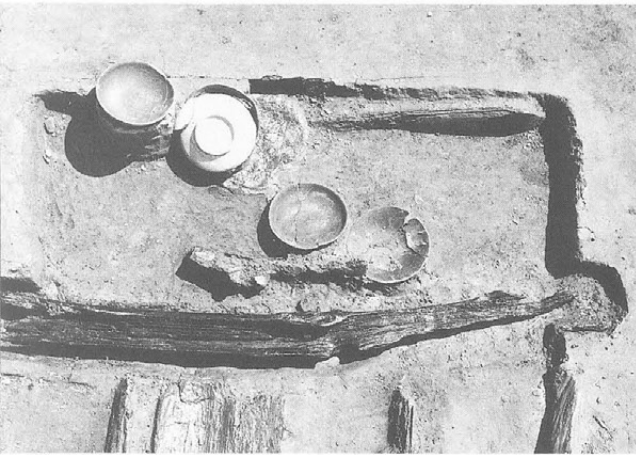




SK4100
木棺墓
上板出土状況



同
下板出土状況



左 同 遺物出土状況
右 同 歯出土状況



左 同 杭出土状況
右 SF12



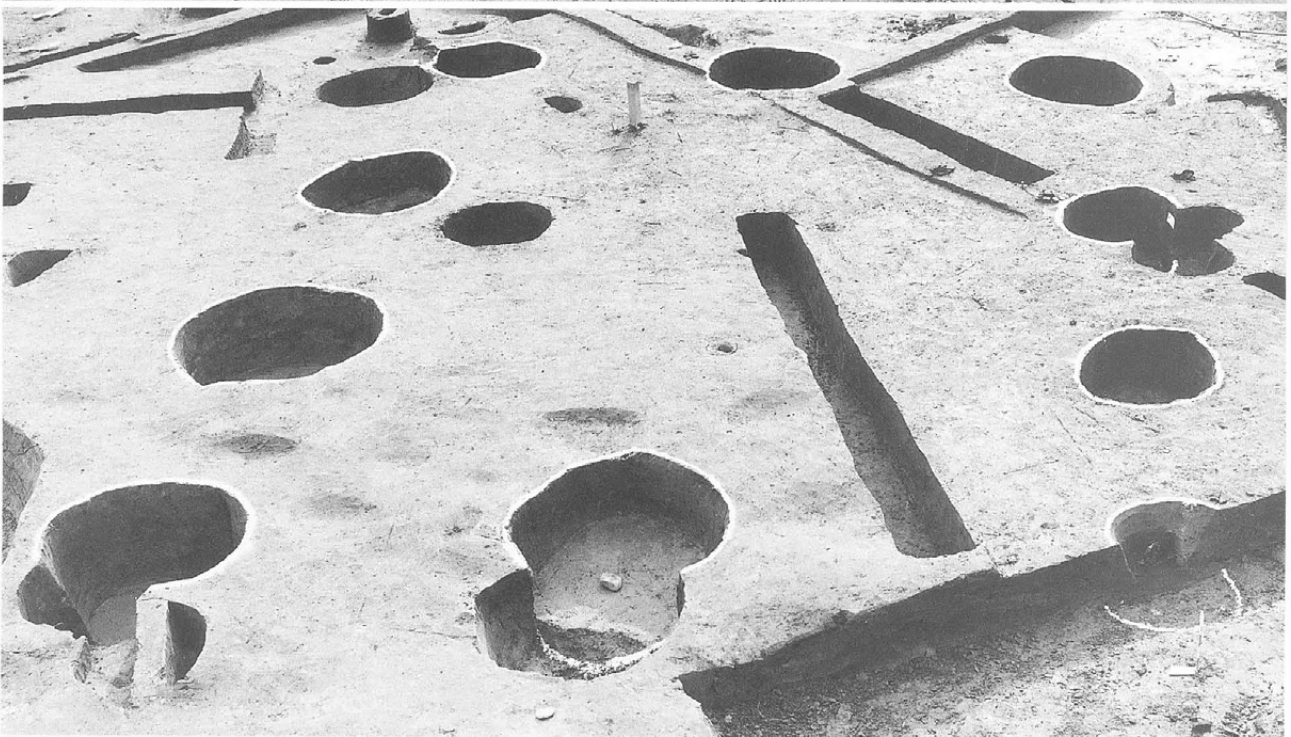
ST33

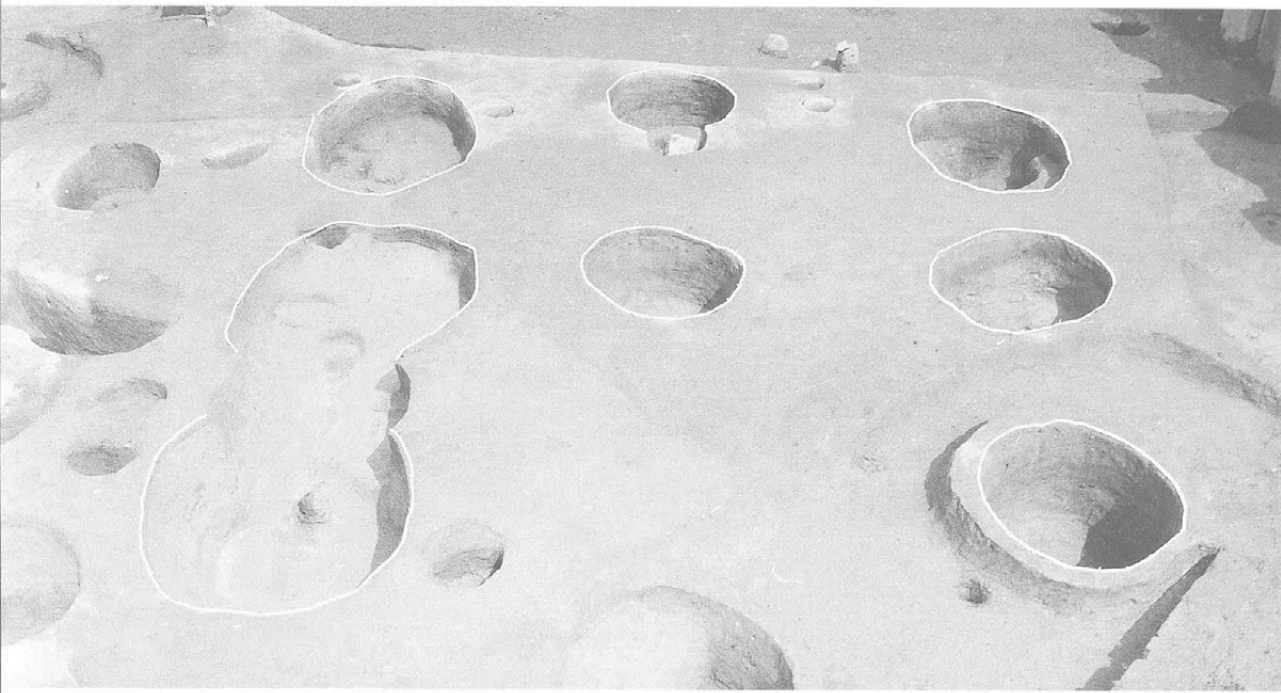


ST34

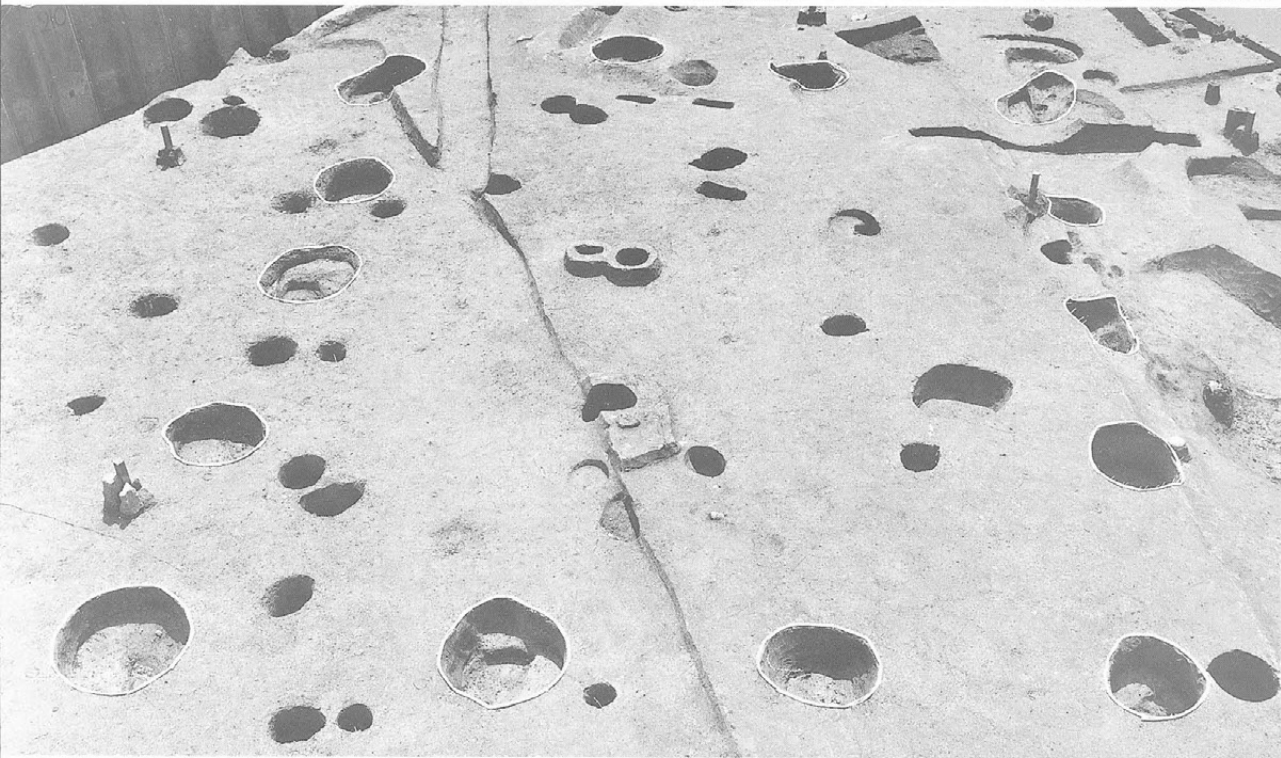


ST40





ST202



ST207

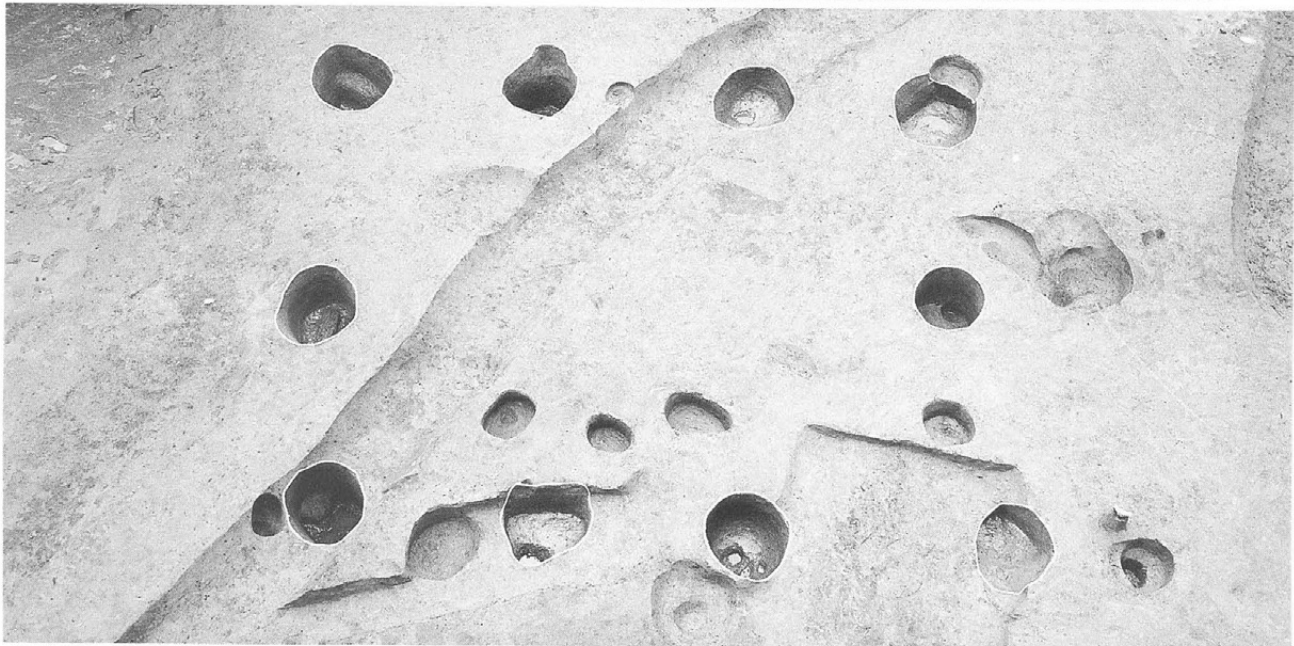


ST302

ST319



ST320

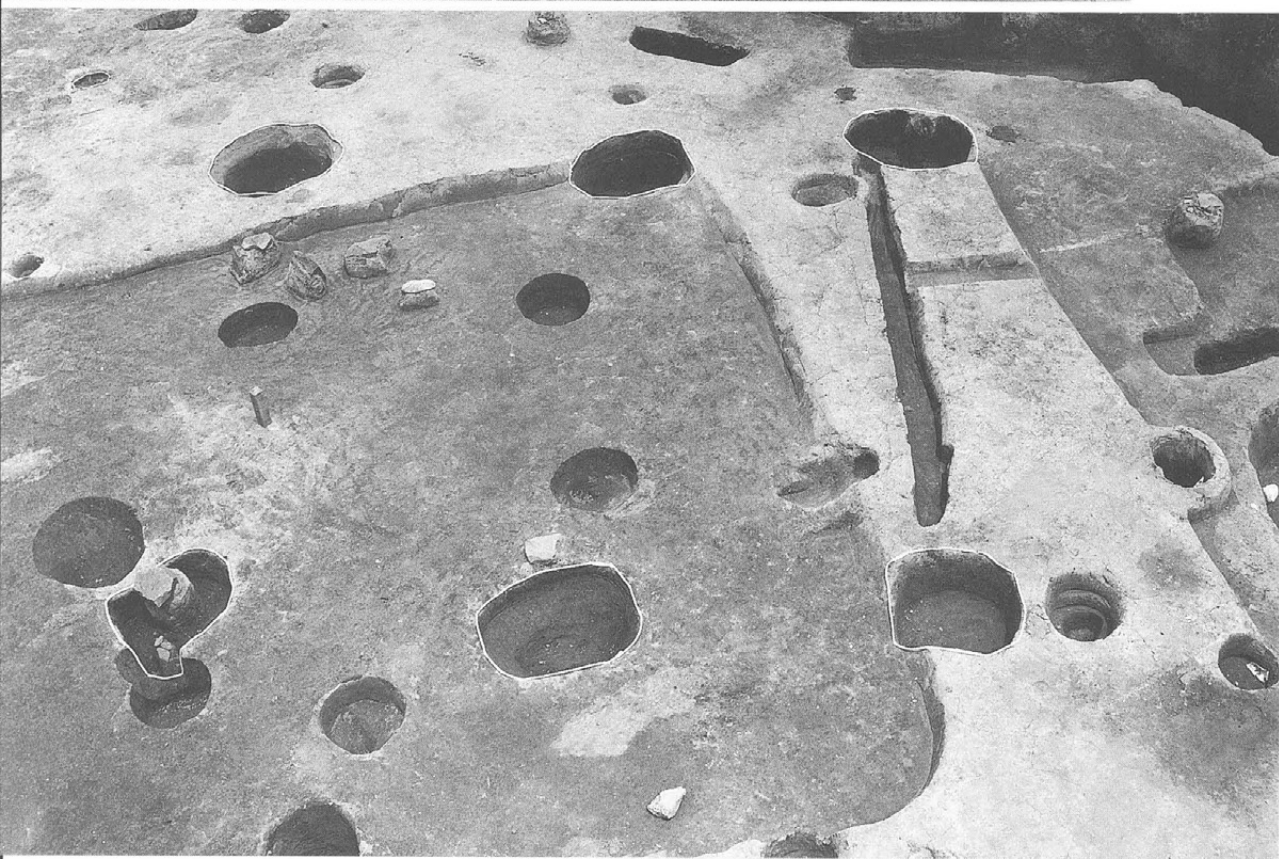


ST507





ST527 (ST533)

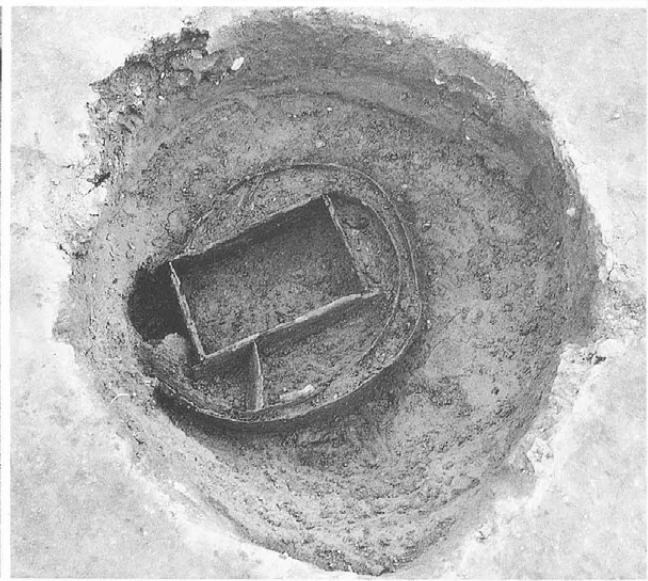


ST530

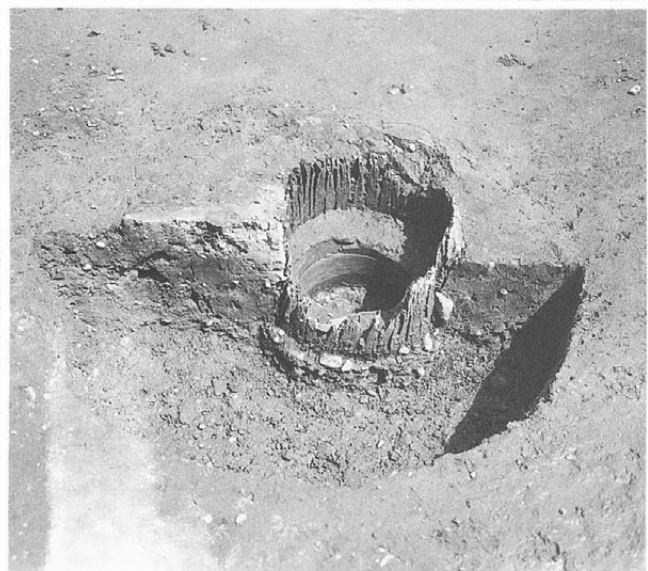
①地区
中世面全景

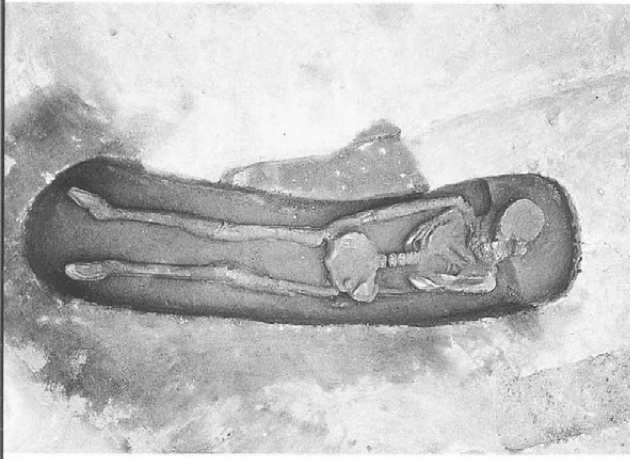


左 SK3557
右 同 曲物、木梓
出土狀況



左 SK3797
人骨出土狀況
右 SK4171
井戸梓、曲物
出土狀況





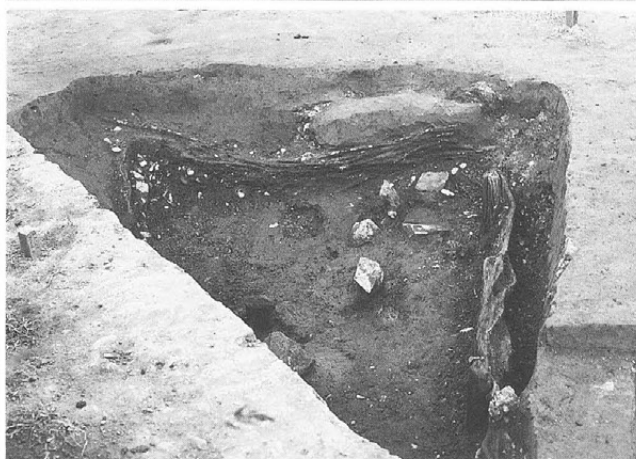
左 SK3927
人骨出土状況
右 SK7001



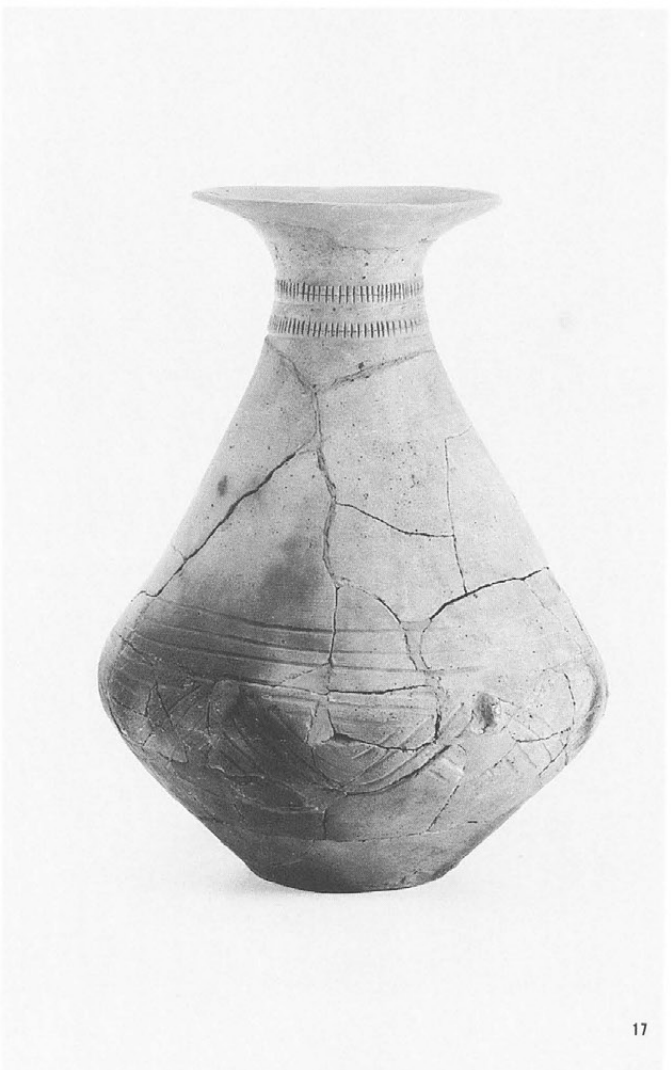
左 SK8484
曲物出土状況
右 同
断面



左 SX401
馬骨出土状況
右 SX508



SB157





18



19

SB157
(18 ~ 23)



20



21



22



23



32



25

SB440
(25 · 29 · 32)



29

SB440



33



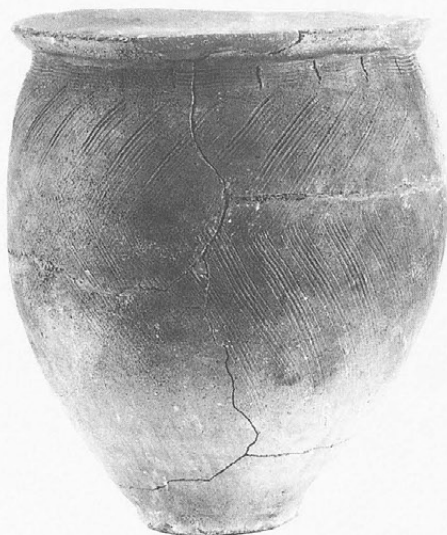
34



35



37



36



40



41



42



45



48

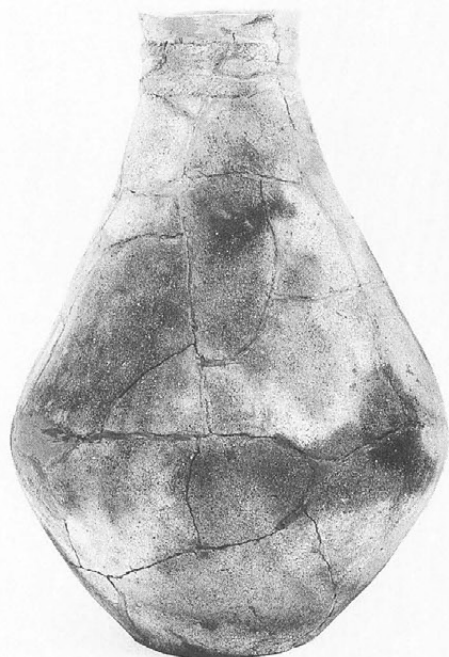


49



126

SB440
(42 · 45 · 48 ·
49)



125



130

SB837
(125 · 126 ·
128 · 129 · 130)



128



129

SB837



131



132



133



134



135



138



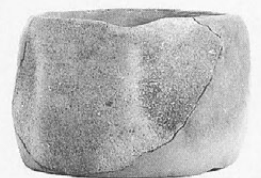
139



137



141



142



140



143

SB1468



174



175



176



177



178



180



183



179



181



184

SB1471
(201 ~ 205)



201



203



202



204

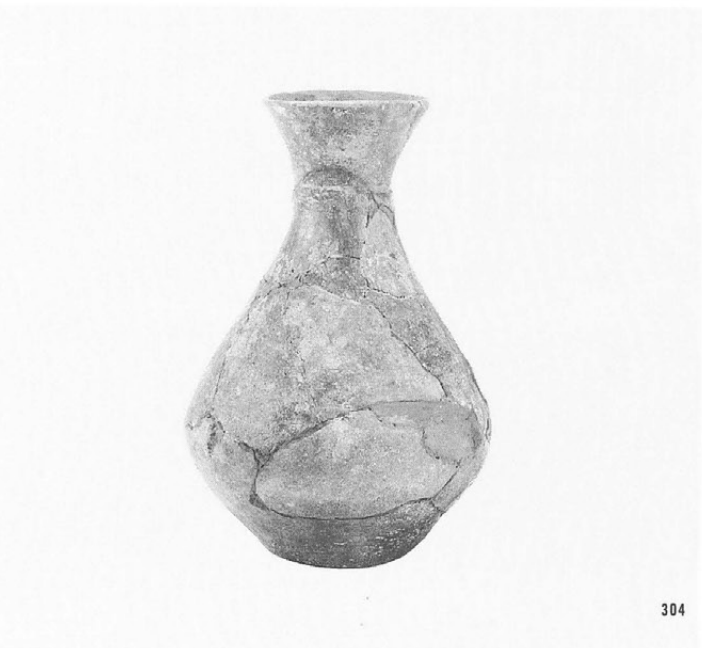
SD318
(303 · 304 ·
305)



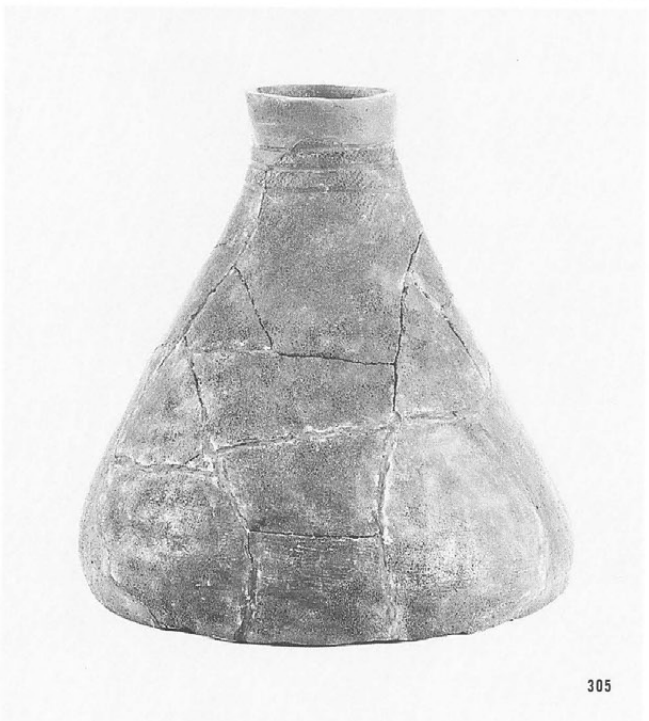
205



303



304



305



306



307



310



308



312



347



369

SK5495
(346・347)
SK5497
(349)
SK5682
(369)
遺構外
(370)



346



349



370

SB157



SB1468





1



3



9



13



2



5



14



4



11



6



7



10



8



21



22



19

SB222



1



2



3



4



9



8



11



12



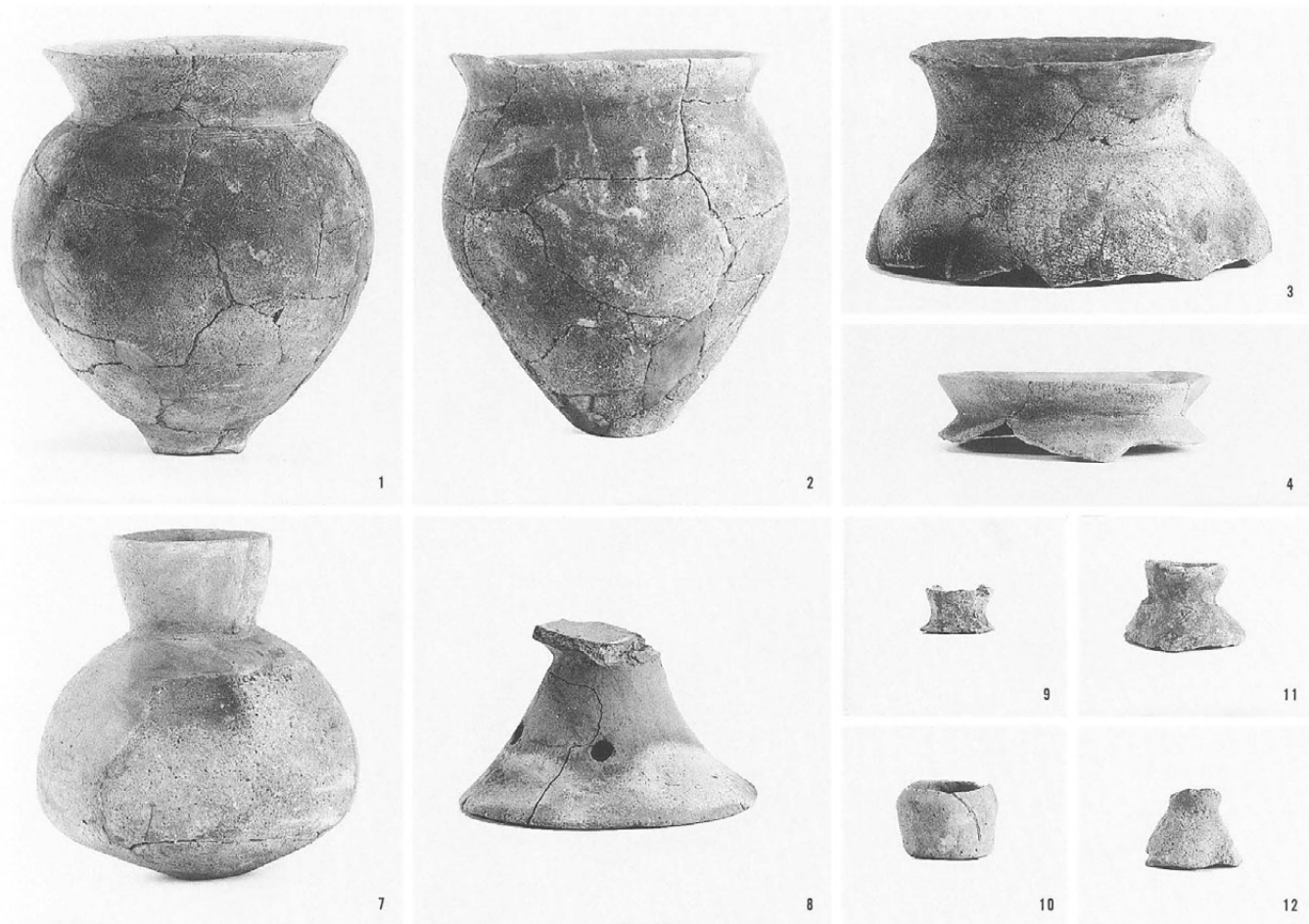
15



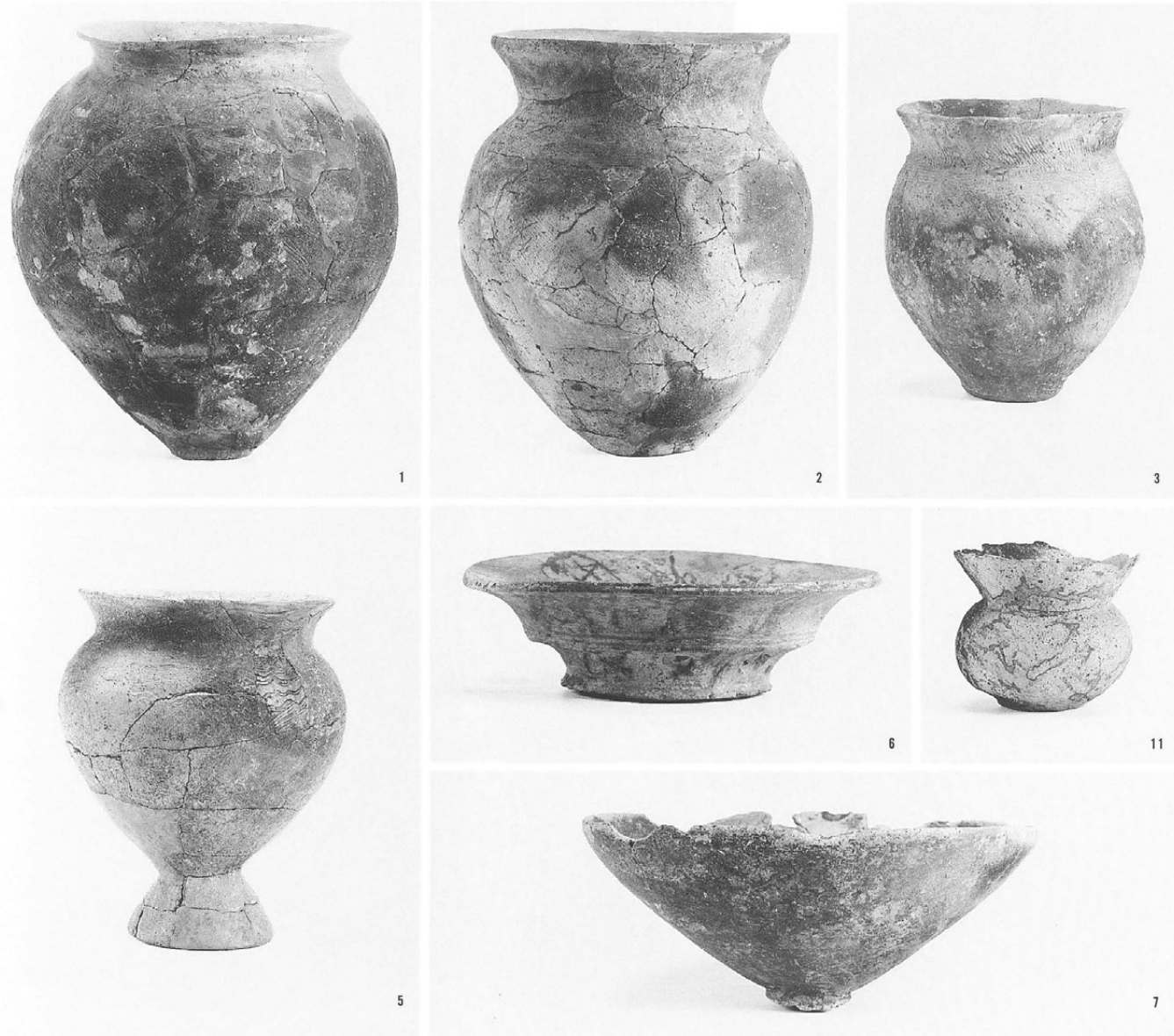
13



18



SB309
(1 ~ 4 ·
7 ~ 12)



SB1441
(1 · 2 · 3 ·
5 · 6 · 7 ·
11)

SB1632

(1・4～7・
10～13・17・
21・23)



1



11



4



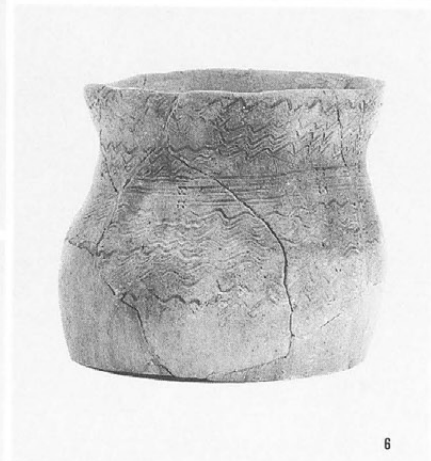
5



7



10



6



12



13



17



21



23

SB124

(9)

SB1802

(4)



9



4



1



4



3



7



8



9



10



13

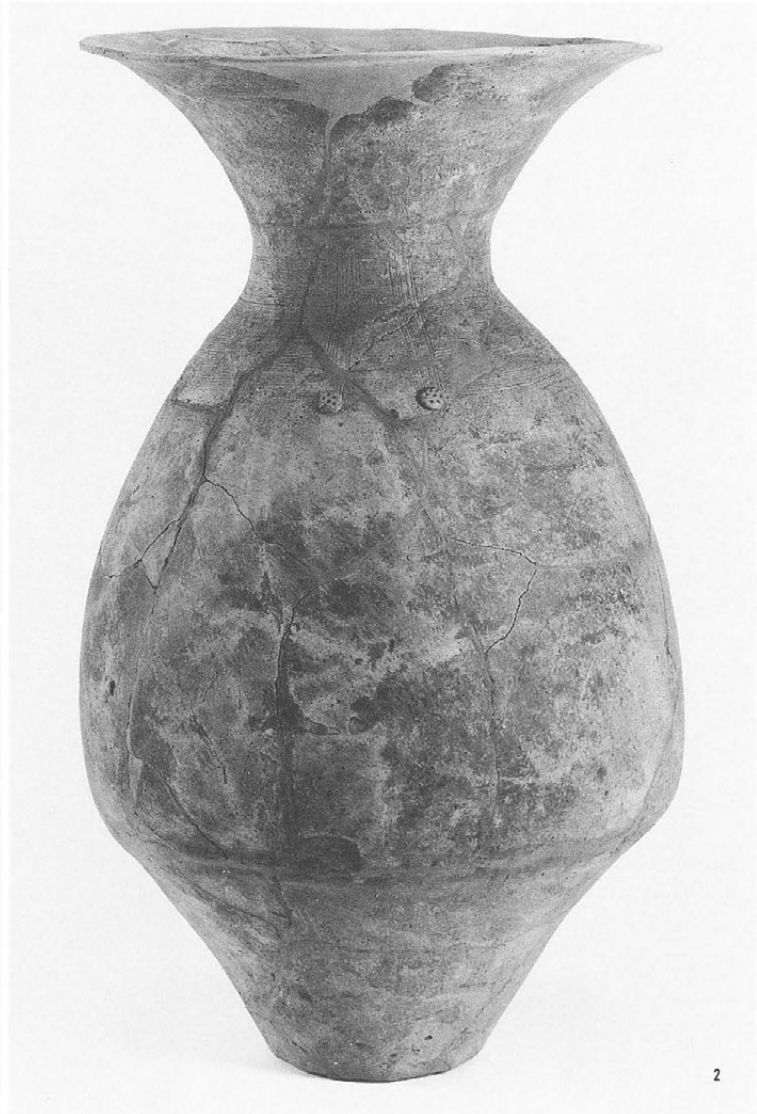


24

SB1672-②
(14~17)



SK4421
(左上 1・2)



SK5343
(下 1・2)



15

14

16

17

1

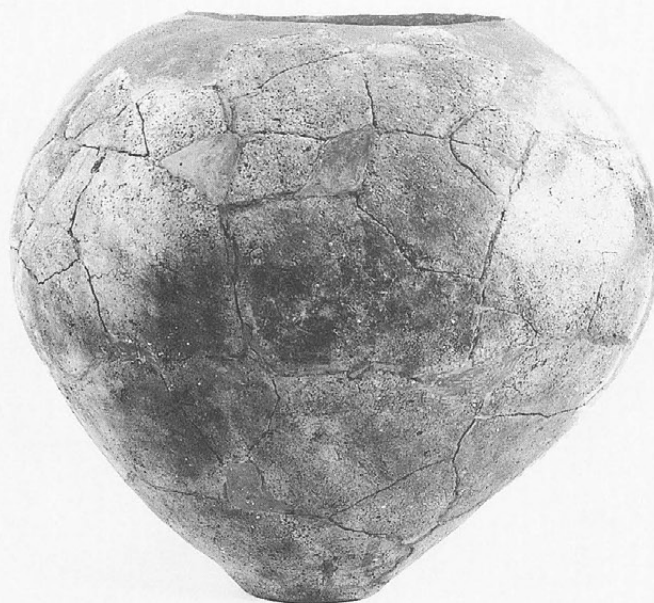
2

1

2



1



4



6



5



9



10



12



14



15



16



18



19

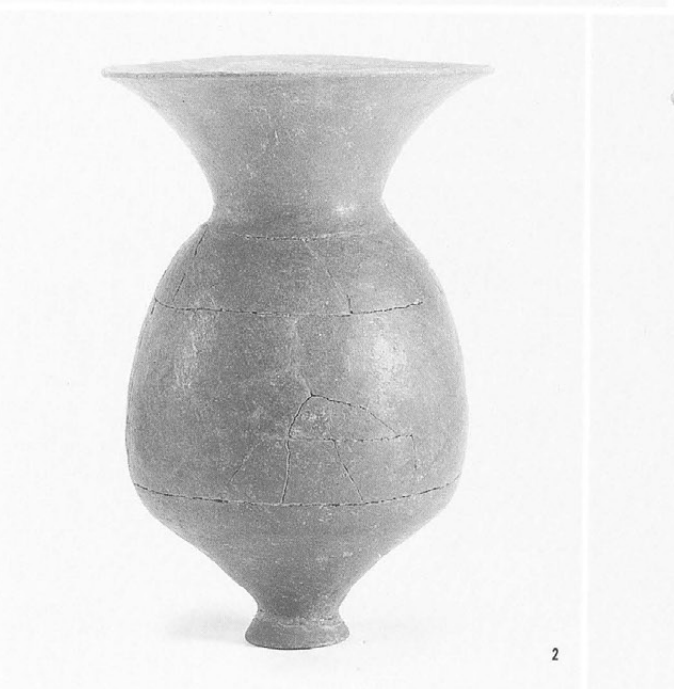
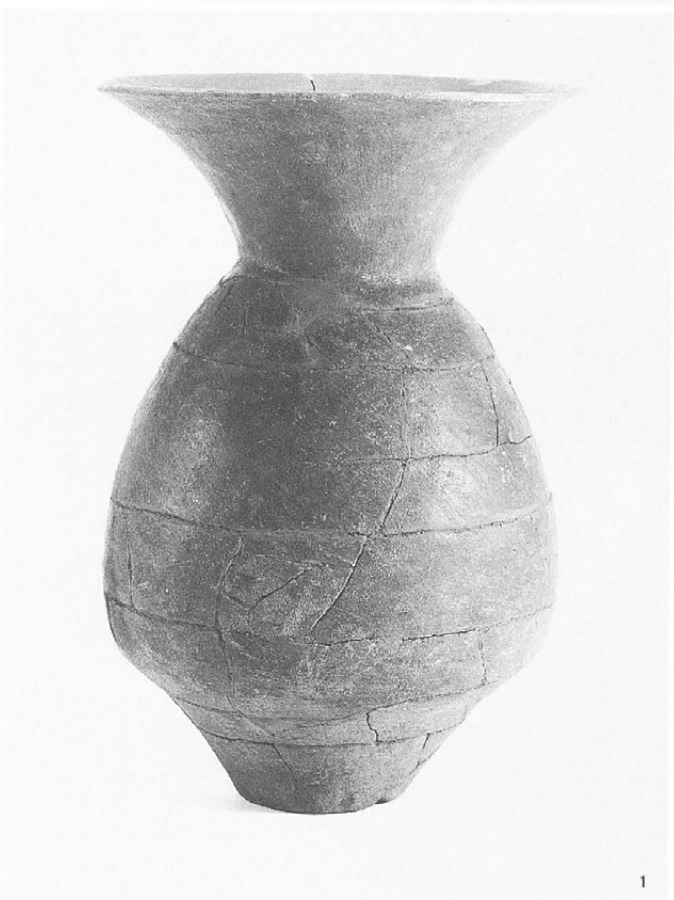


20

SD169
(左 1)
SD183
(右 1)



SD185
(1 ~ 4・8)





1



5



4



6



2



8

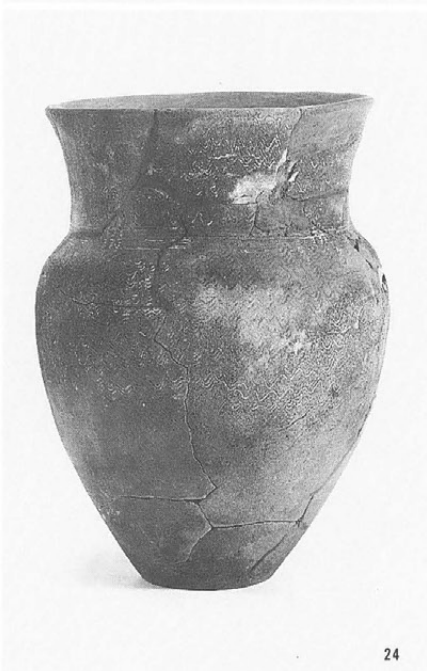


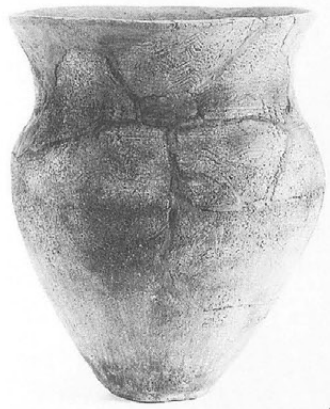
9



12

SD551-①





29



35



36



41



54



86



61



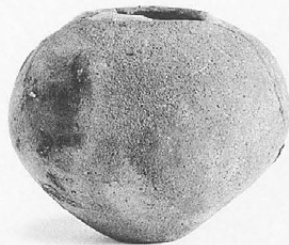
62



63



48



50



90



88



79



91

SB85



SB222



SB1441



SB1672



SD63



SD551



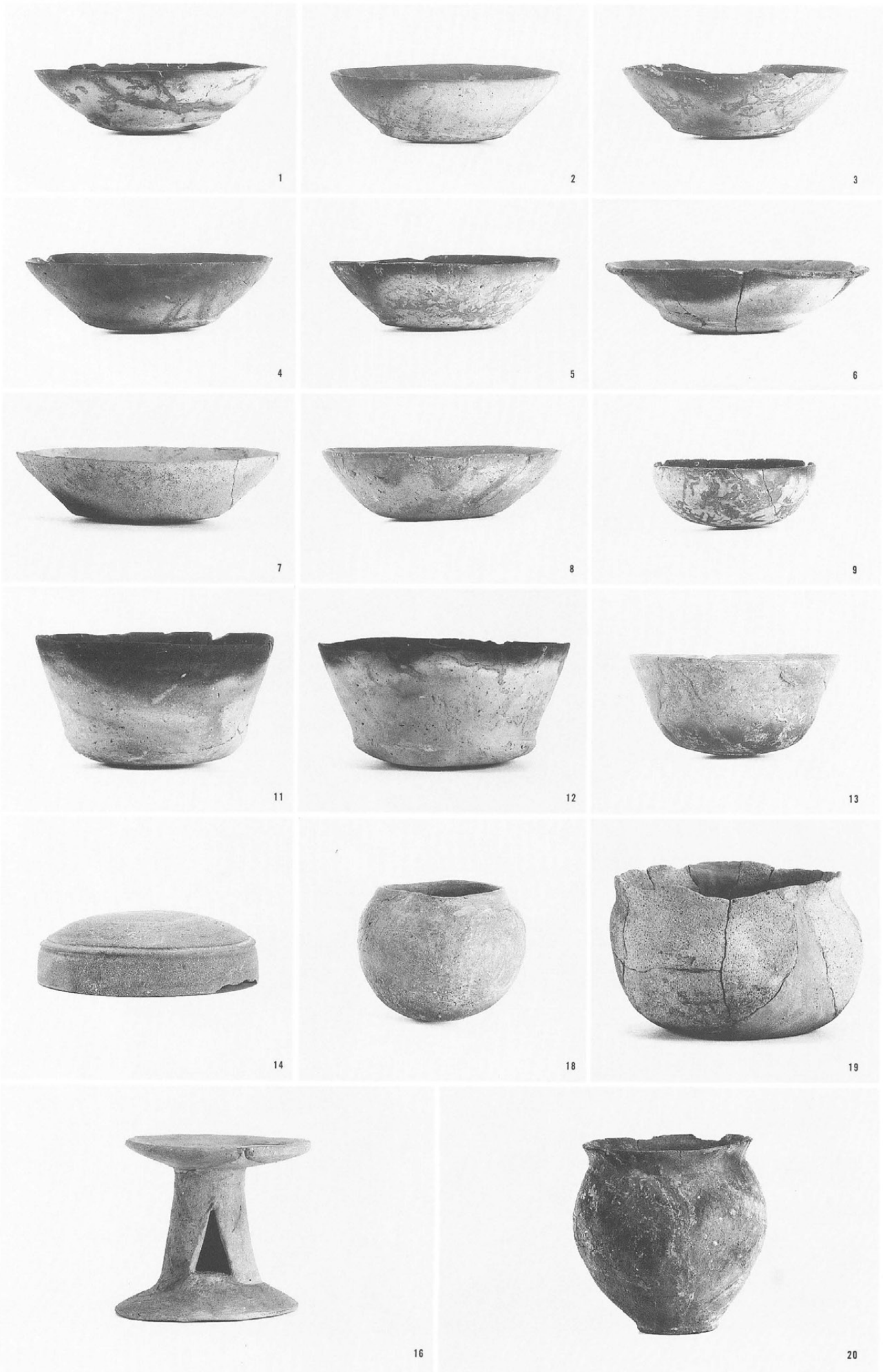
SD185



SD190



SB69-①





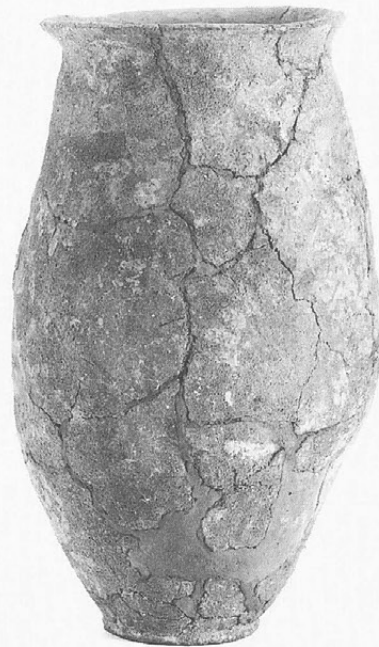
21



22



23



24

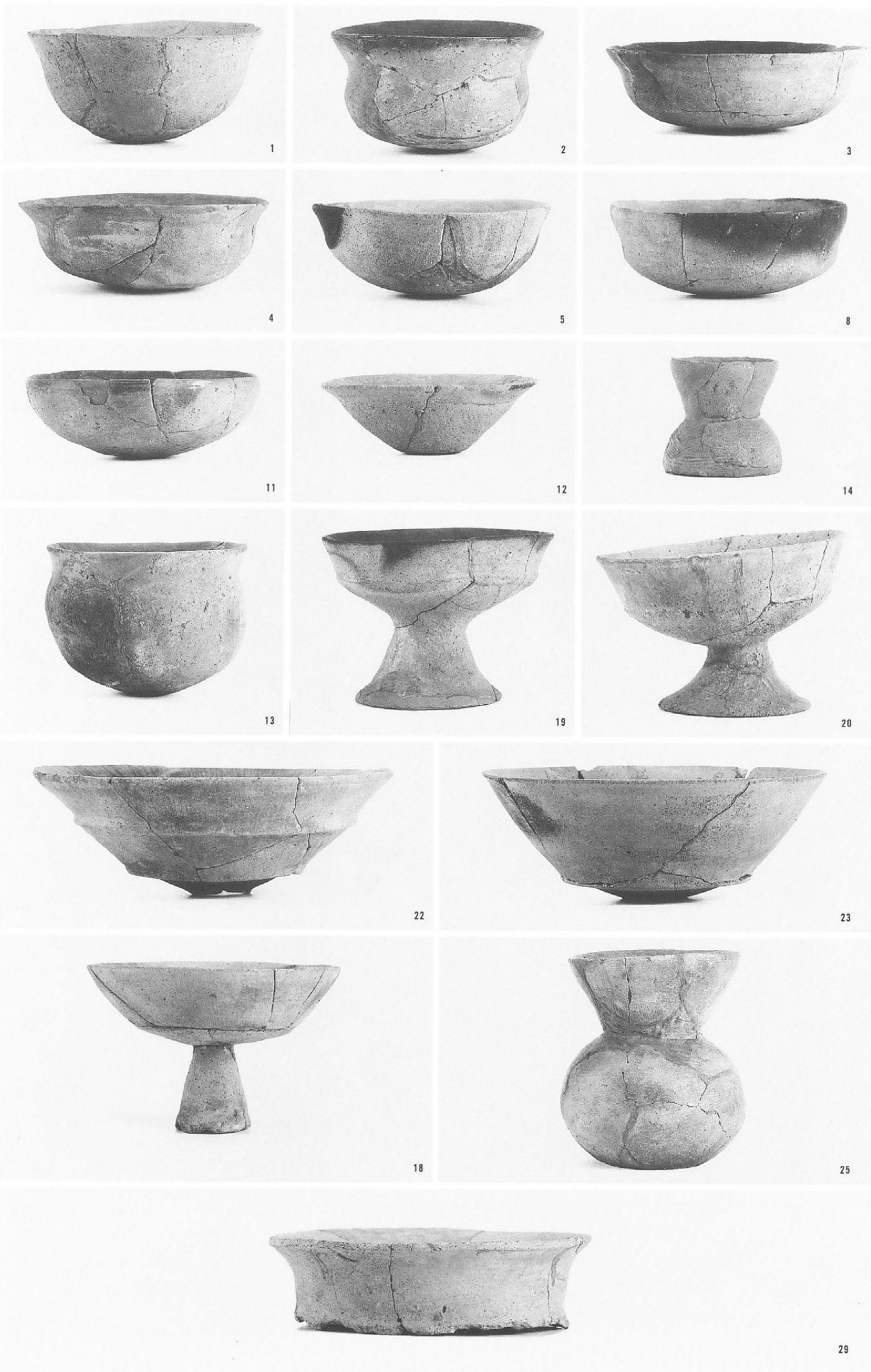


25



26

SB380-①





24



32

SB380-②
(24・31・32・
34)



31



34



6



5

SB477
(5～8)



7



8

SB322-①

