

磨石・凹石・敲石

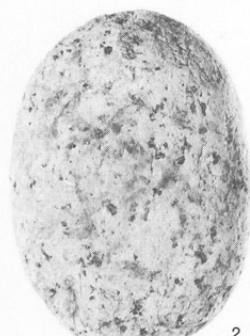
- 1. VP5-41
- 2. IVY15-17
- 3. IVY18-53
- 4. VL16-36
- 5. IVY8-1
- 6. VP9-30
- 7. VG20-10
- 8. VU3-23
- 9. VK10-47
- 10. VU21-53
- 11. VL10-27



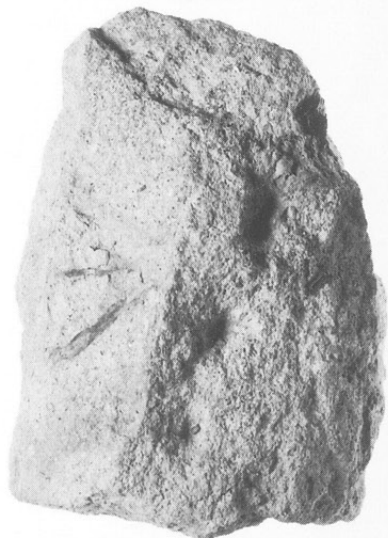
1



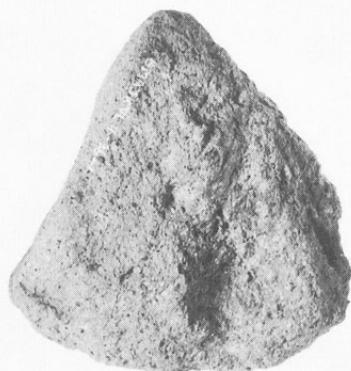
3



2



7



4



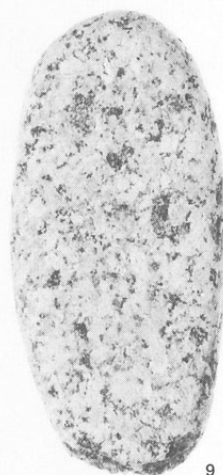
5



6



8



9



11

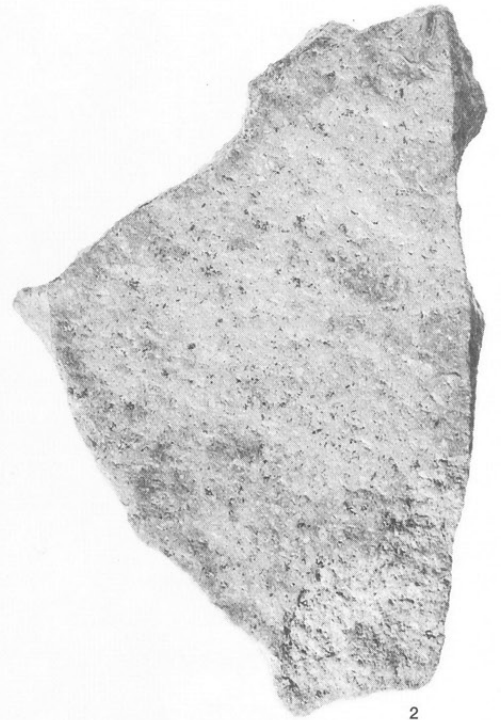


10

台石

1. IVY13-54

2. VU4-21



刃器

- 1. VK20-37
- 2. IY19-53
- 3. IVT20-49
- 4. IIIA1-5
- 5. VK20-43
- 6. VP12-33
- 7. SK3123
- 8. IY14-17
- 9. IVT23-47
- 10. VI4-22
- 11. IVT24-2
- 12. IY20-38
- 13. IY25-25
- 14. IY25-25



2



3



1



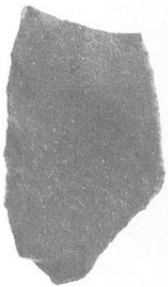
5



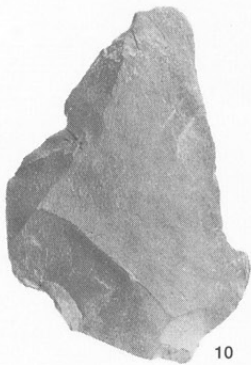
4



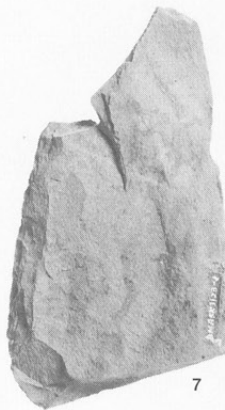
9



6



10



7



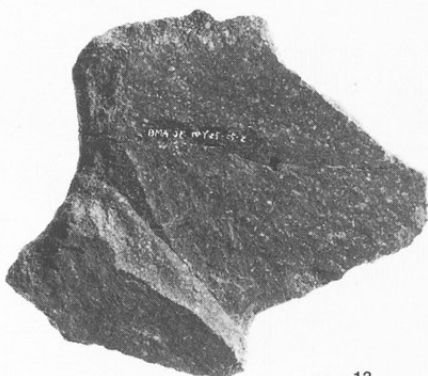
8



11



12



13

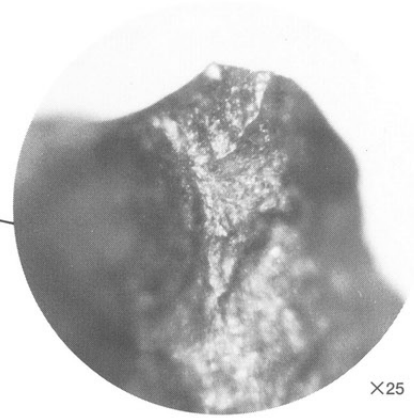
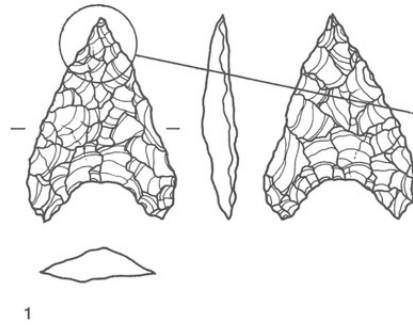


14

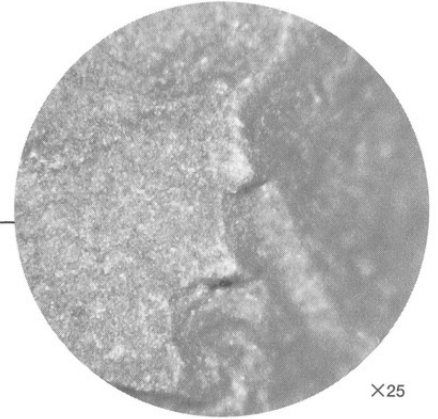
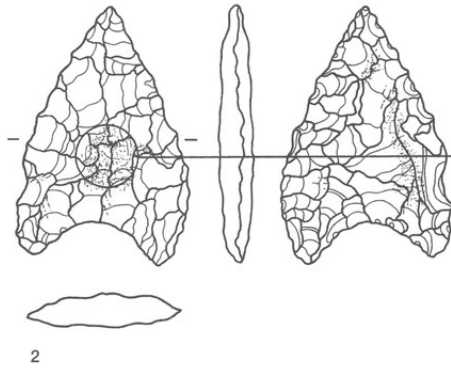
使用痕写真 1

石鏃

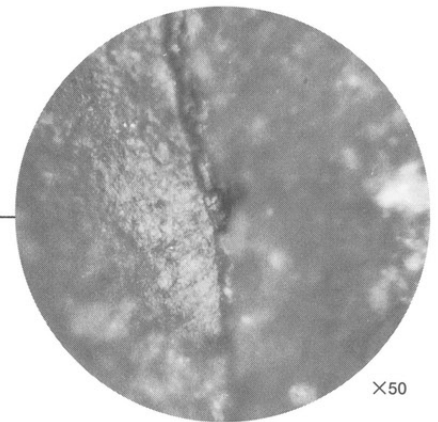
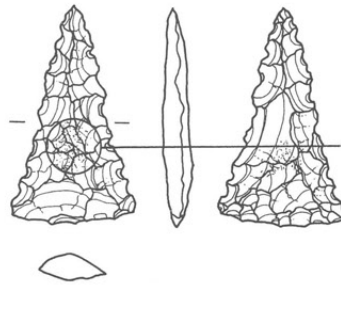
- 1. VK25-43  
図版363-4  
PL132-4  
(先端部損傷)



- 2. IVT24-45  
図版363-10  
PL132-10  
(基部摩耗痕)

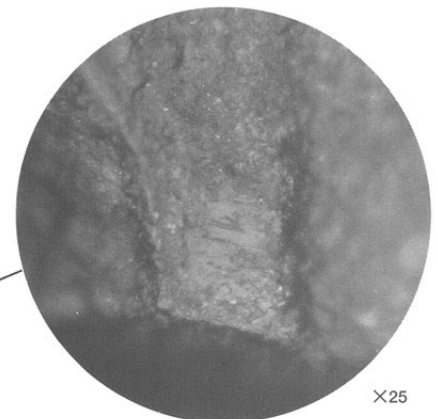
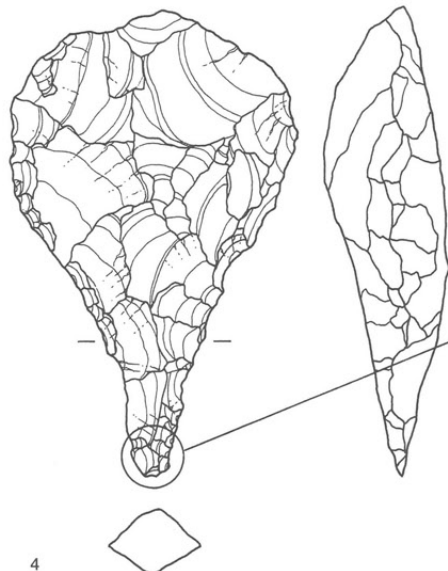


- 3. IVY20-1  
図版363-3  
PL132-3  
(基部摩耗痕)

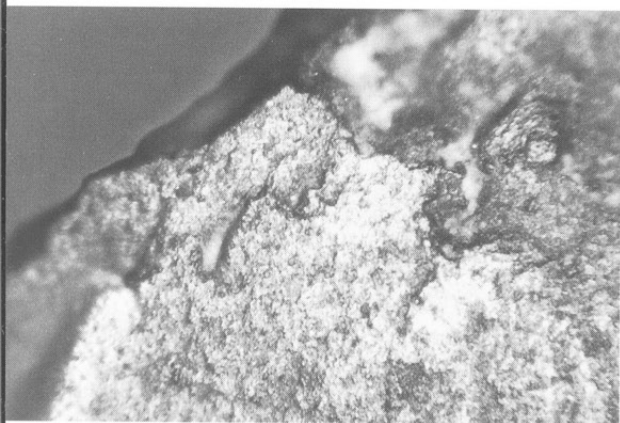


石錐

- 4. SK3001  
図版363-15  
PL132-15  
(先端部摩耗痕)

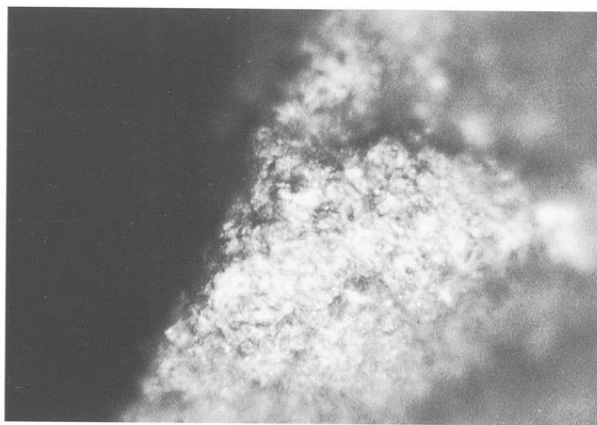






1

×25



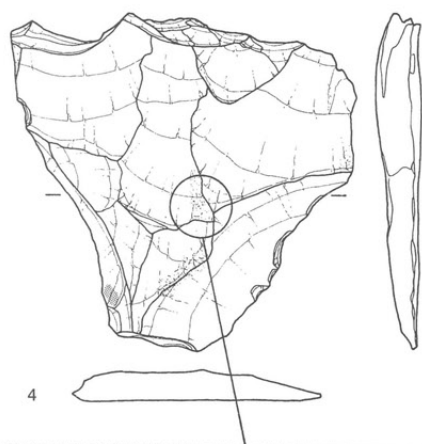
2

×50

使用痕写真 2

小形刃器

- 1. VU19-12  
(刃部使用痕)
- 2. IVT24-50  
(刃部使用痕)



4

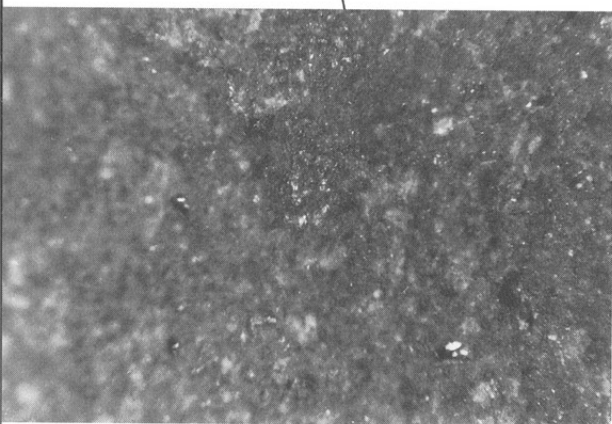


3

×25

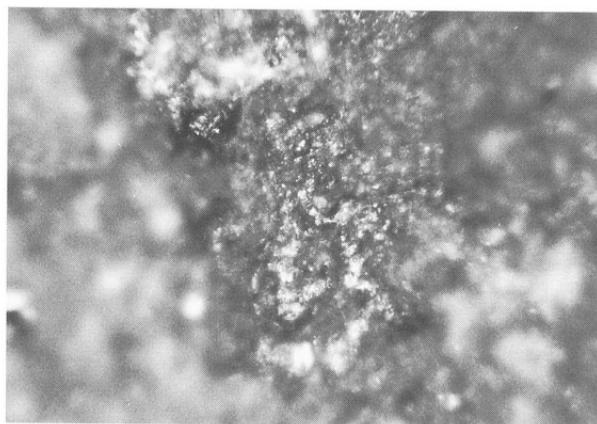
大形刃器2B類

- 3. VP12-33  
図版368-6  
PL136-6  
(刃部使用痕)



4a

×12.5

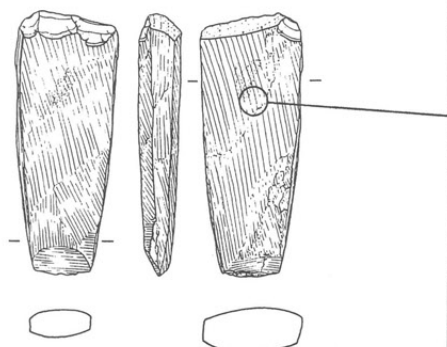


4b

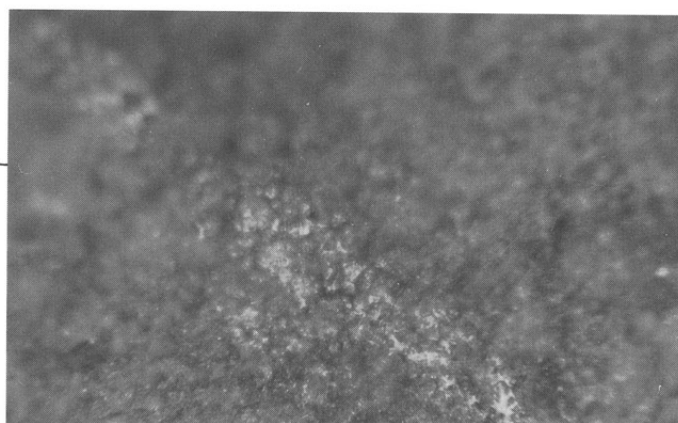
×25

大形刃器1A類

- 4. IVT24-2  
図版369-11  
PL136-11  
(刃部摩耗痕)



5



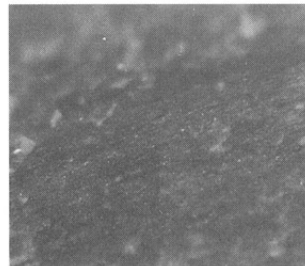
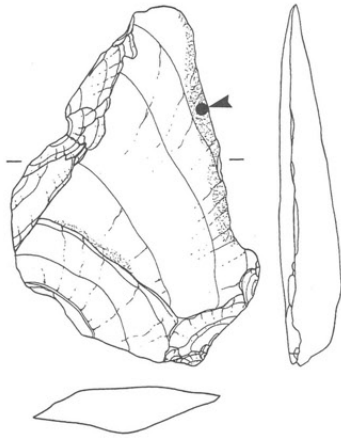
5a

×25

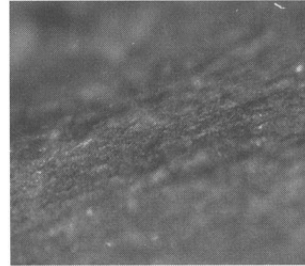
磨製石斧

- 5. VU21-53  
図版363-16  
PL132-16  
(基部装着痕)

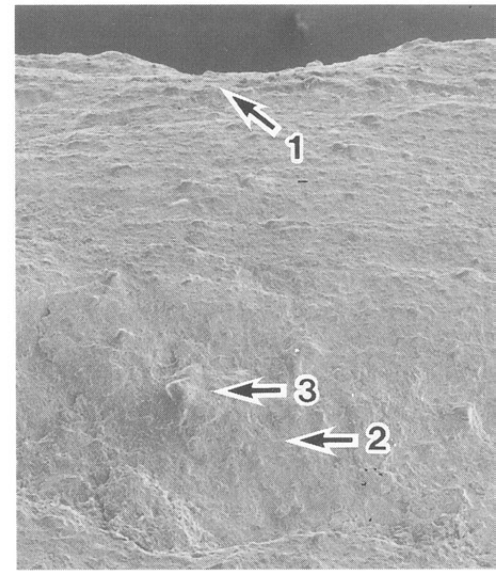
使用痕写真 3  
大形刃器1B類  
VL4-22  
図版369-10  
PL136-10  
(摩耗痕)



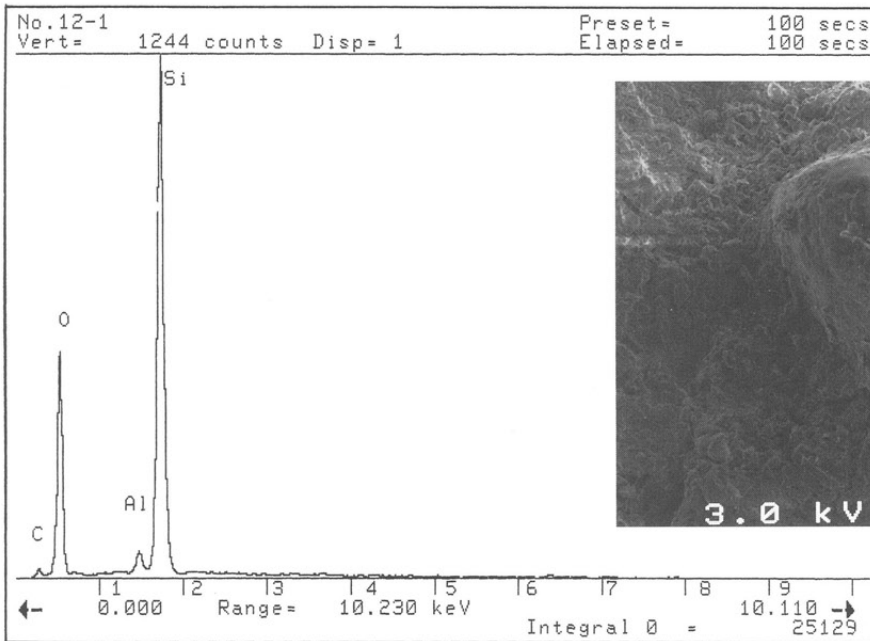
A X12.5



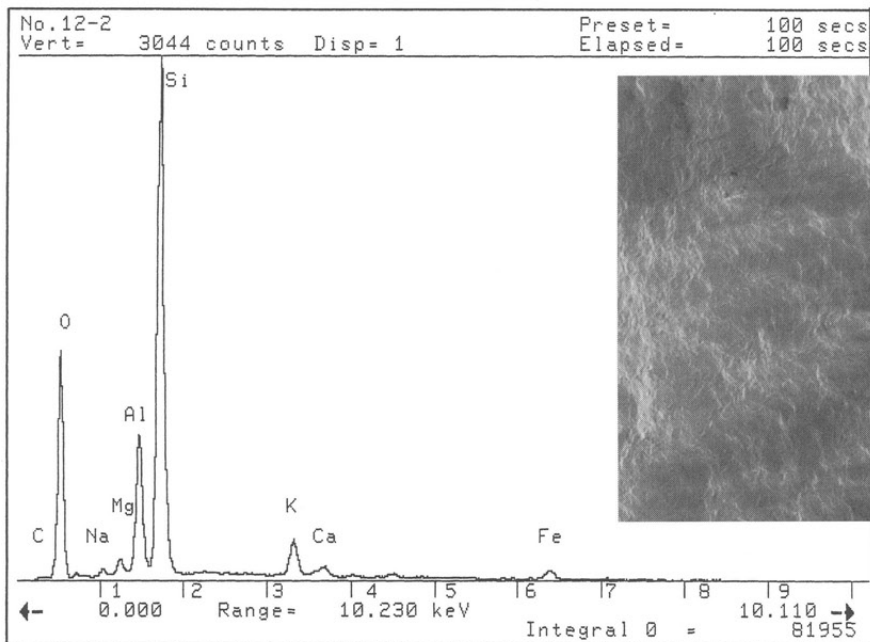
B X25



C X100

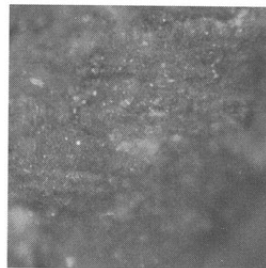
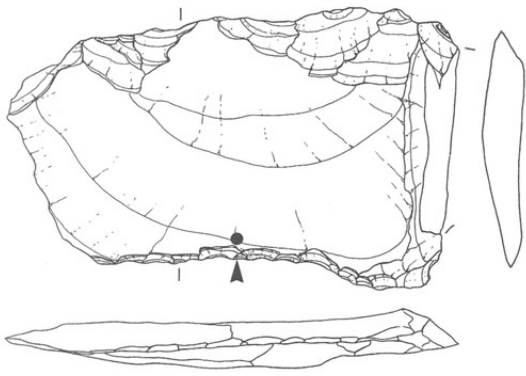


刃部 (C-3) EDX分析チャート

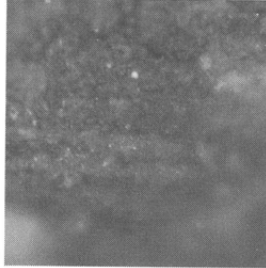


中央部 EDX分析チャート

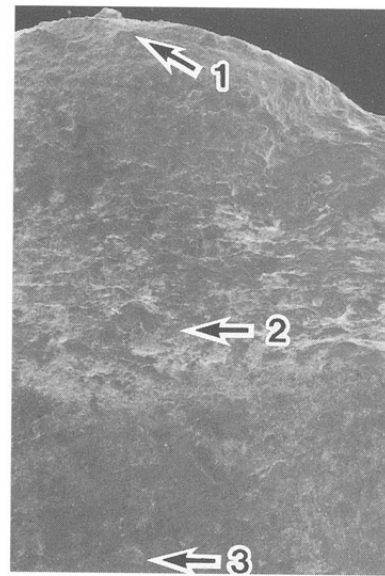
使用痕写真 4  
 大形刃器2B類  
 IVY14-17  
 図版368-8  
 PL136-8  
 (摩耗痕)



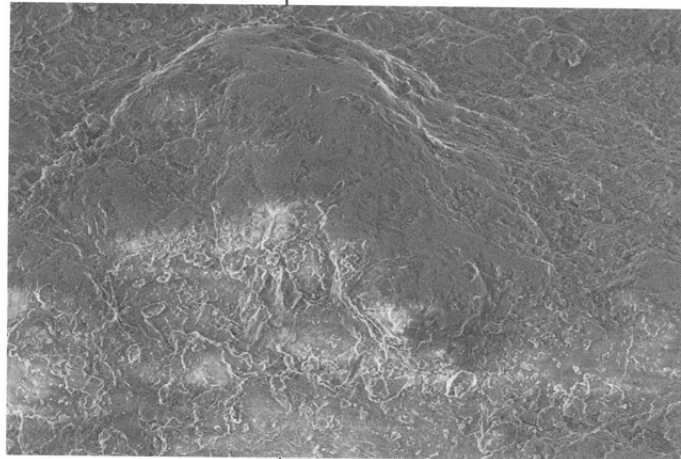
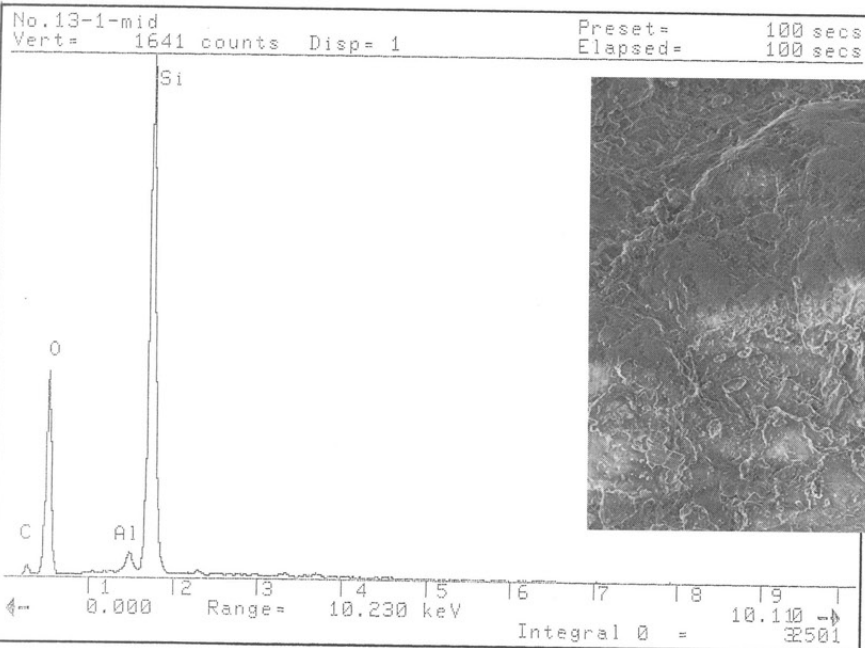
A X25



B X50

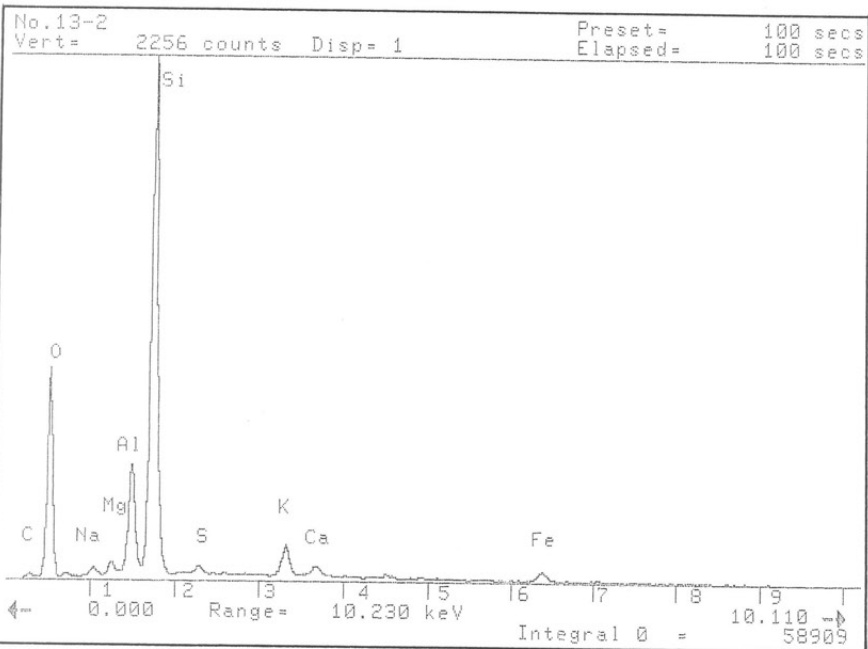


C X100



D X1.000

刃部 (C-2) EDX分析チャート

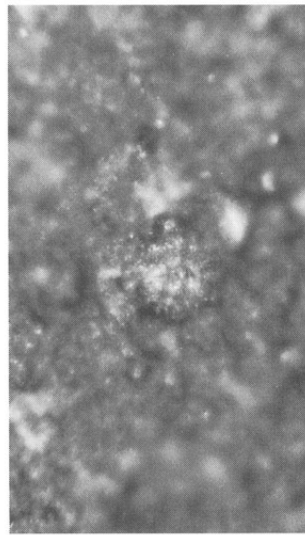
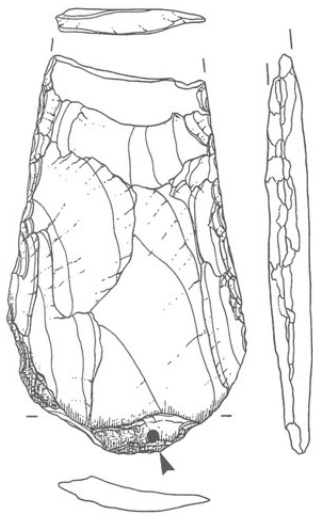


中央部 EDX分析チャート

使用痕写真 5

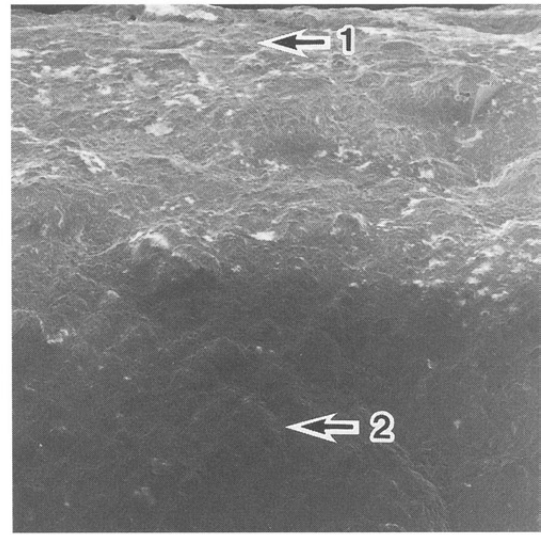
打製石斧

V P8-16  
図版364-3  
PL133-3  
(摩耗痕)



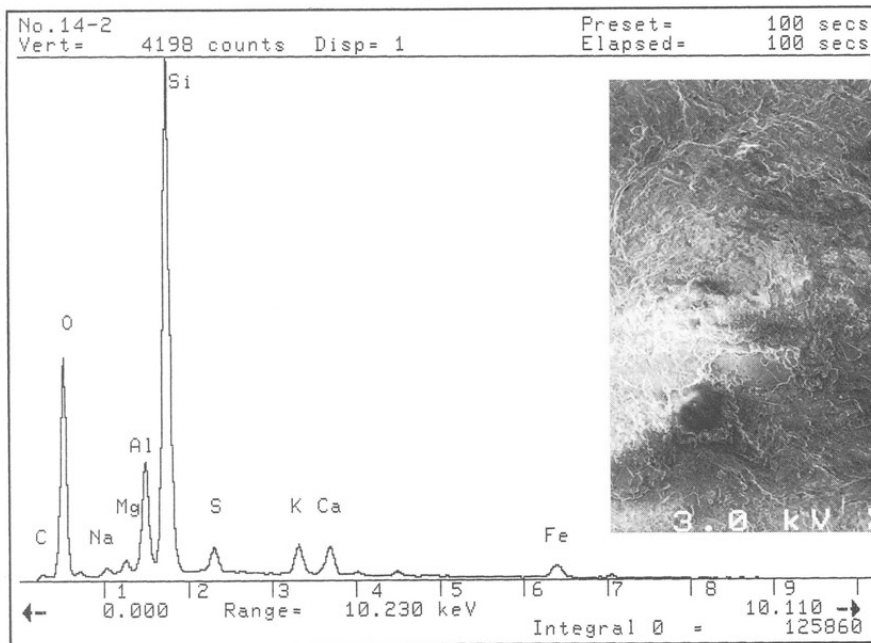
A

X25

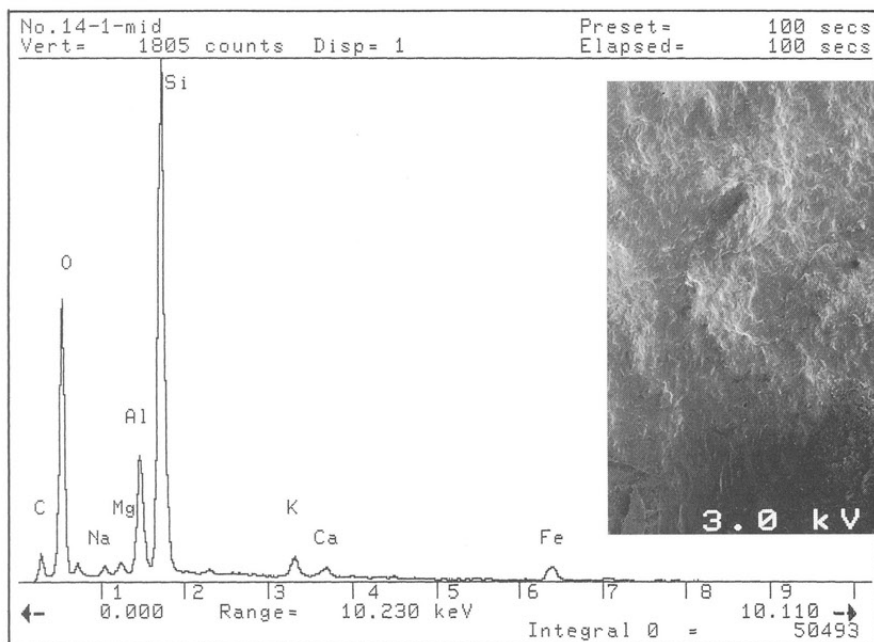


B

X100



刃部 (B-2) EDX分析チャート



基部 EDX分析チャート



(財)長野県埋蔵文化財センター発掘調査報告書 27

上信越自動車道埋蔵文化財発掘調査報告書 4

—長野市内 その2—

**松原遺跡**

**縄文時代**

発行 平成10年3月27日発行  
発行者 日本道路公団名古屋建設局  
長野県教育委員会  
(財)長野県埋蔵文化財センター  
印刷 カシヨ株式会社

