



H-113号住居址カマド



H-114号住居址



H-115号住居址



H-115号住居址カマド



H-116号住居址



H-117号住居址



H-117号住居址カマド



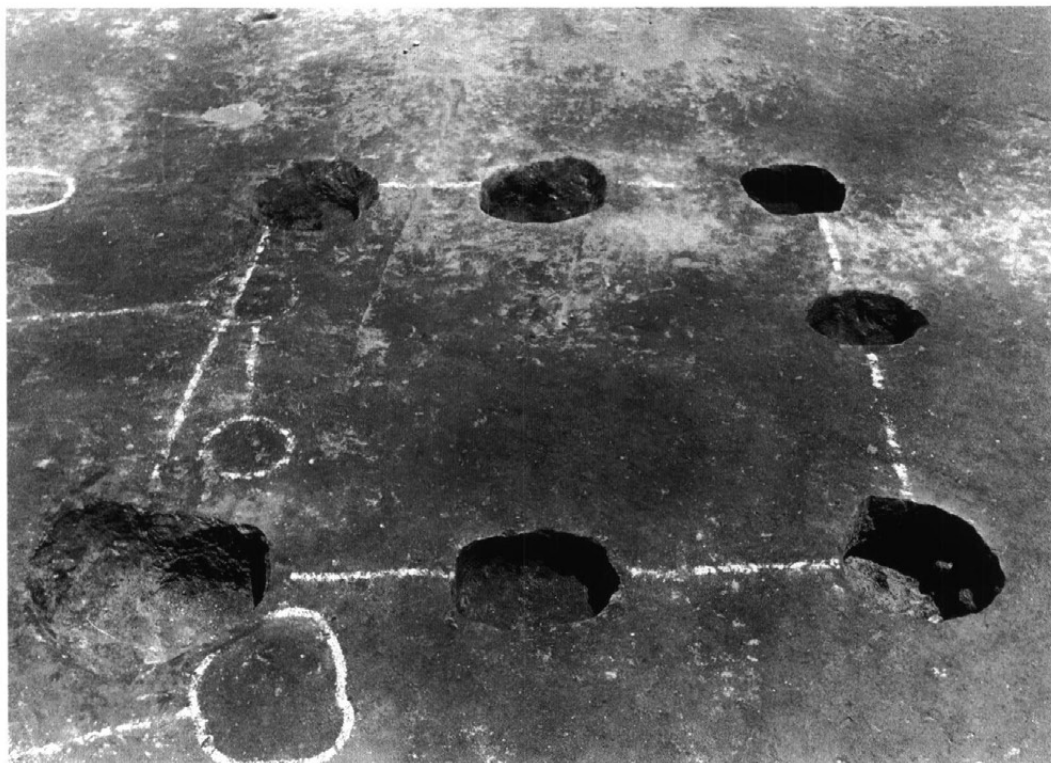
第I区の調査（サ・シ・ス-42・43・44グリッド付近）



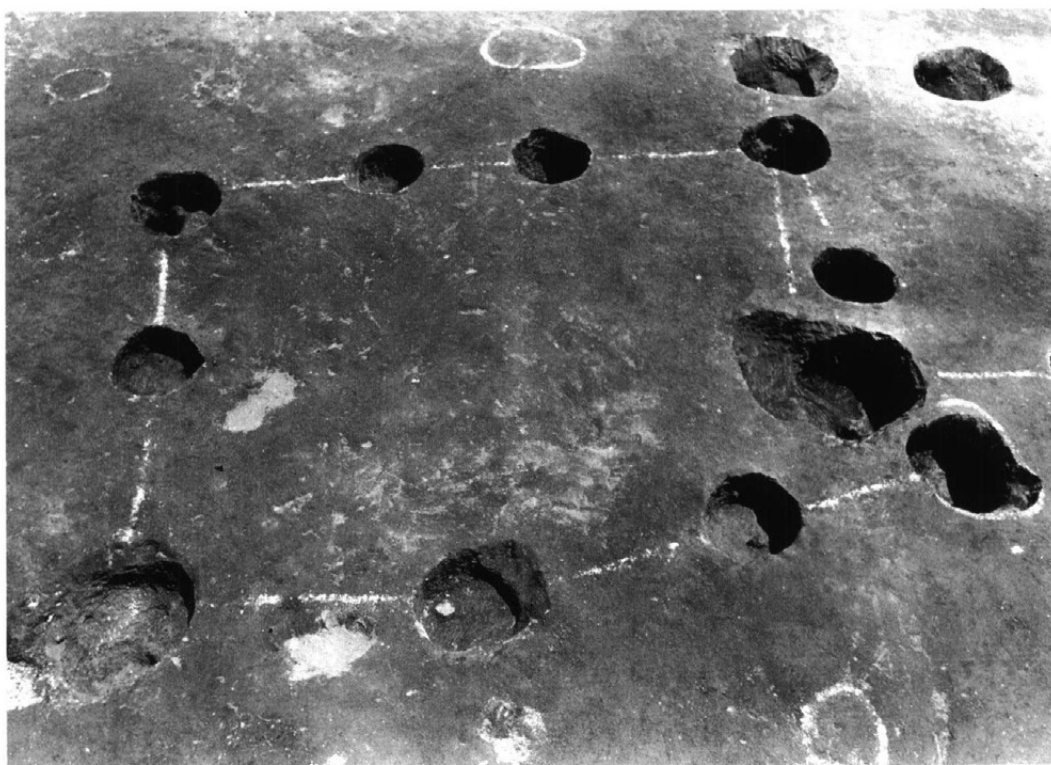
F-1号掘立柱建物址



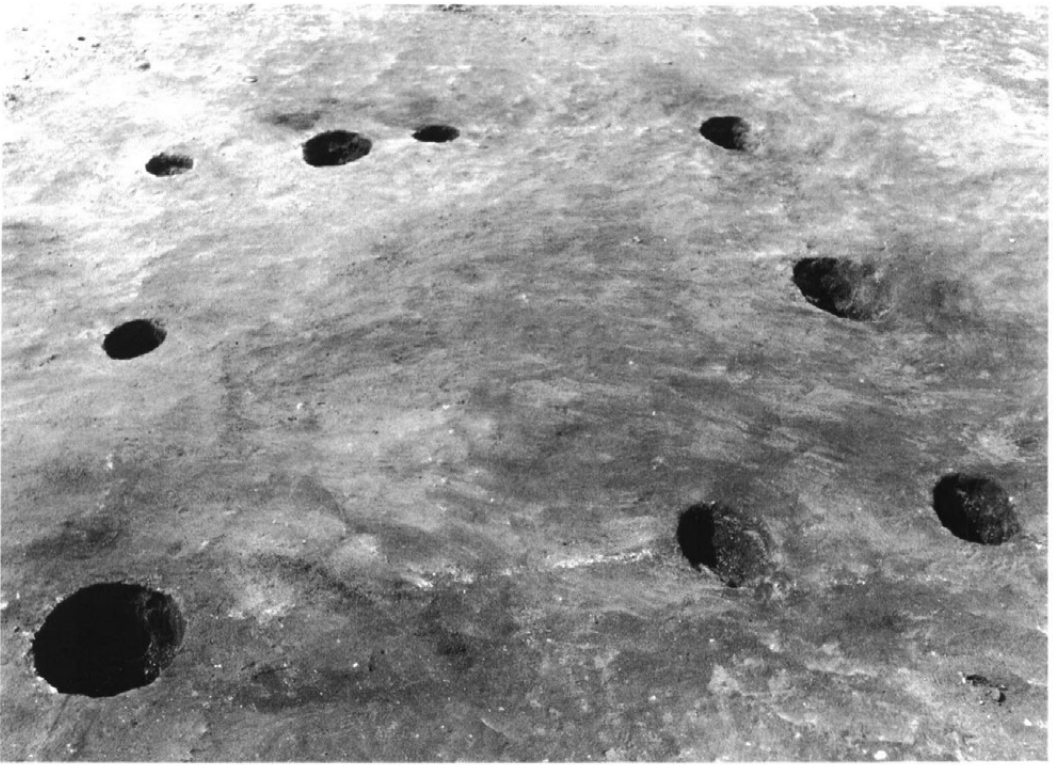
F-2号掘立柱建物址



F-3号掘立柱建物址



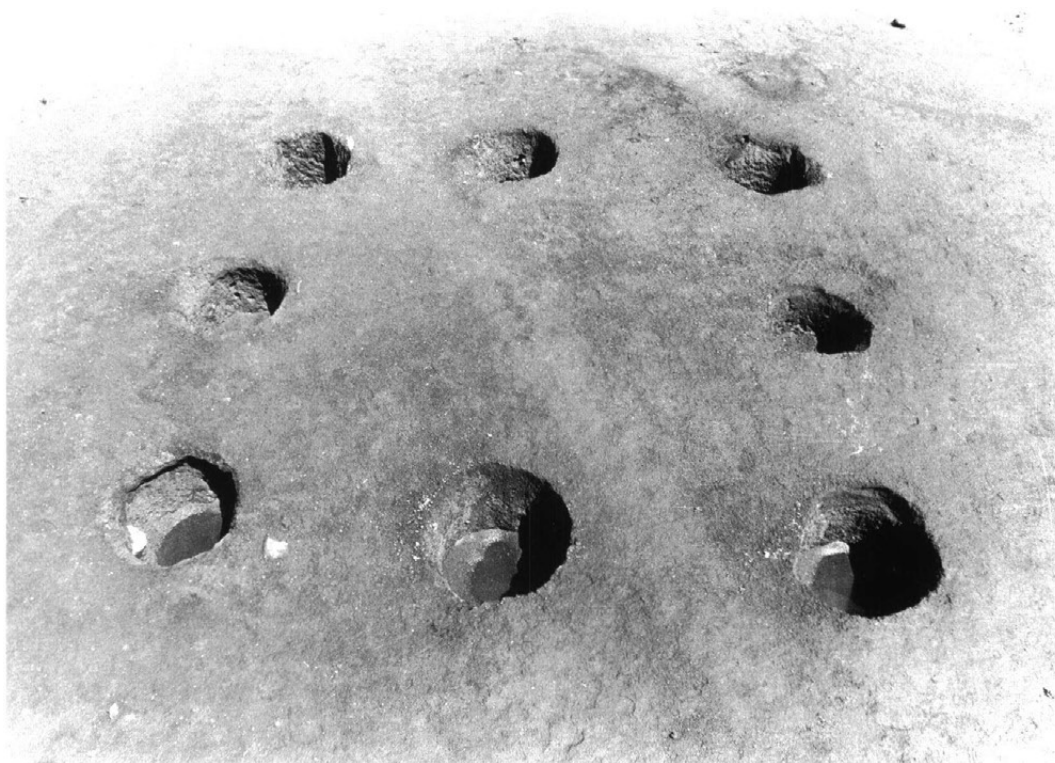
F-4号掘立柱建物址



F-5号掘立柱建物址



F-9号掘立柱建物址



F-10号掘立柱建物址

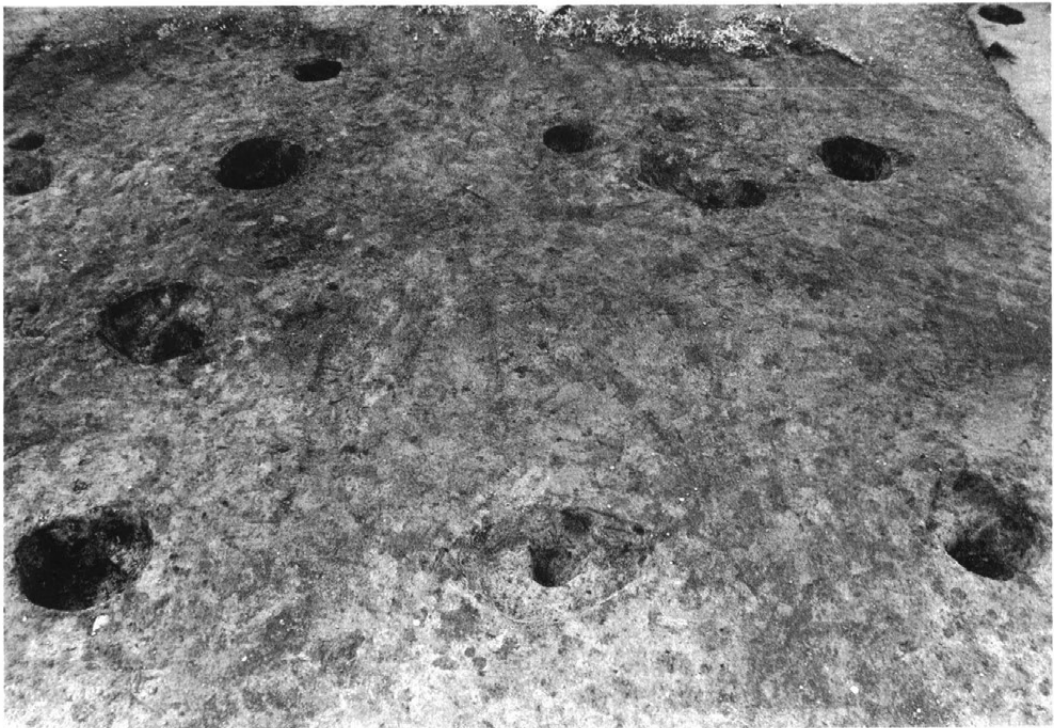


F-11号掘立柱建物址





F-12号掘立柱建物址



F-13号掘立柱建物址



F-14号掘立柱建物址



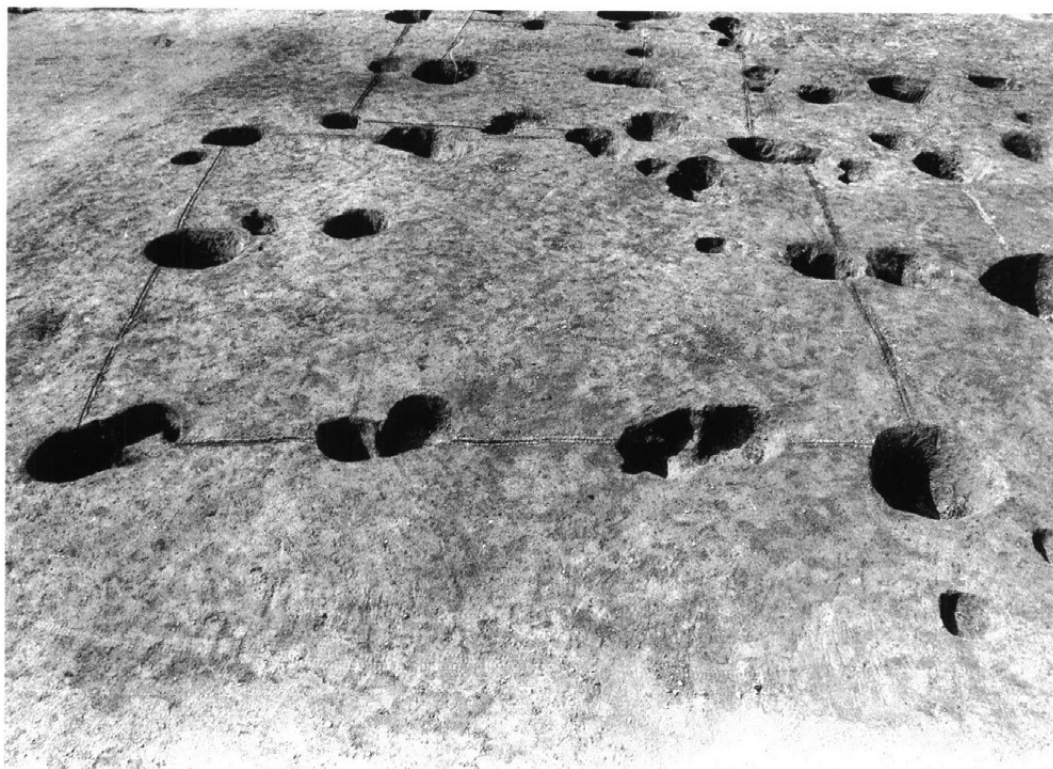
F-15号掘立柱建物址



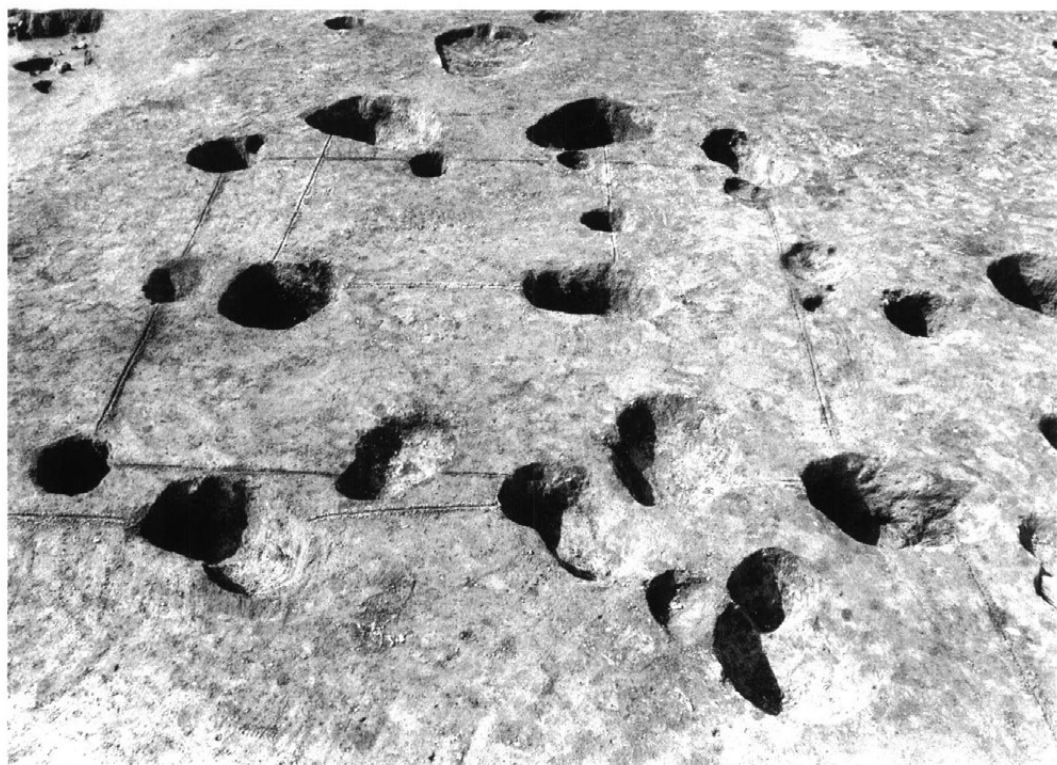
F-16号掘立柱建物址



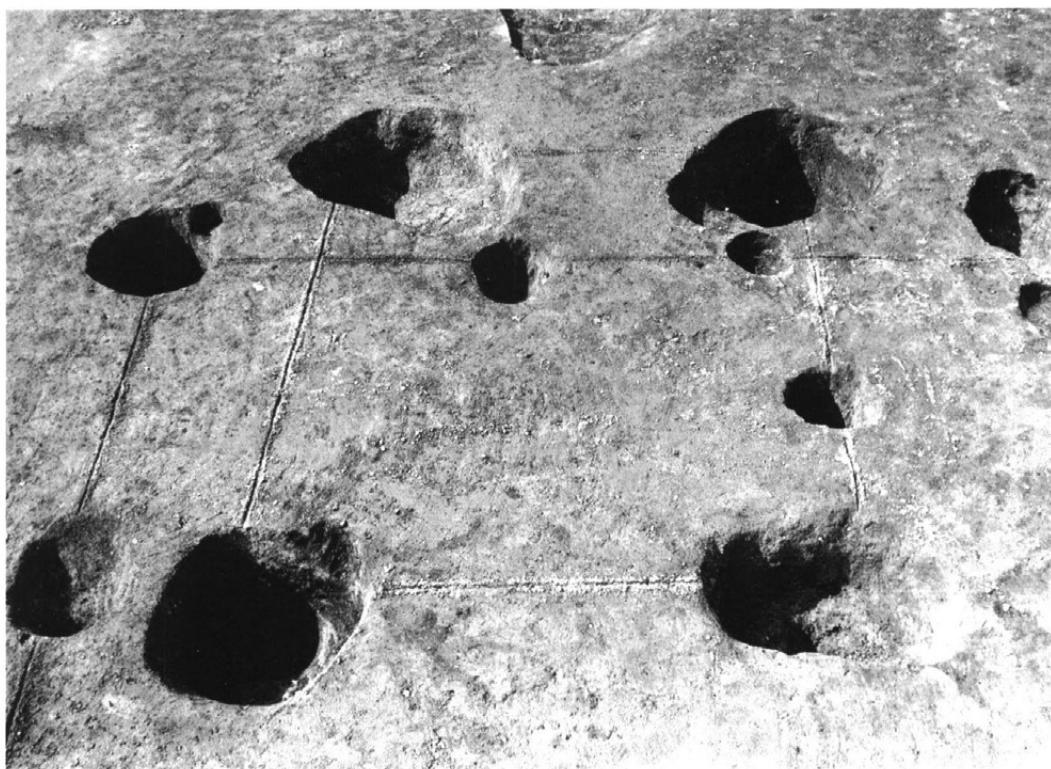
F-17号掘立柱建物址



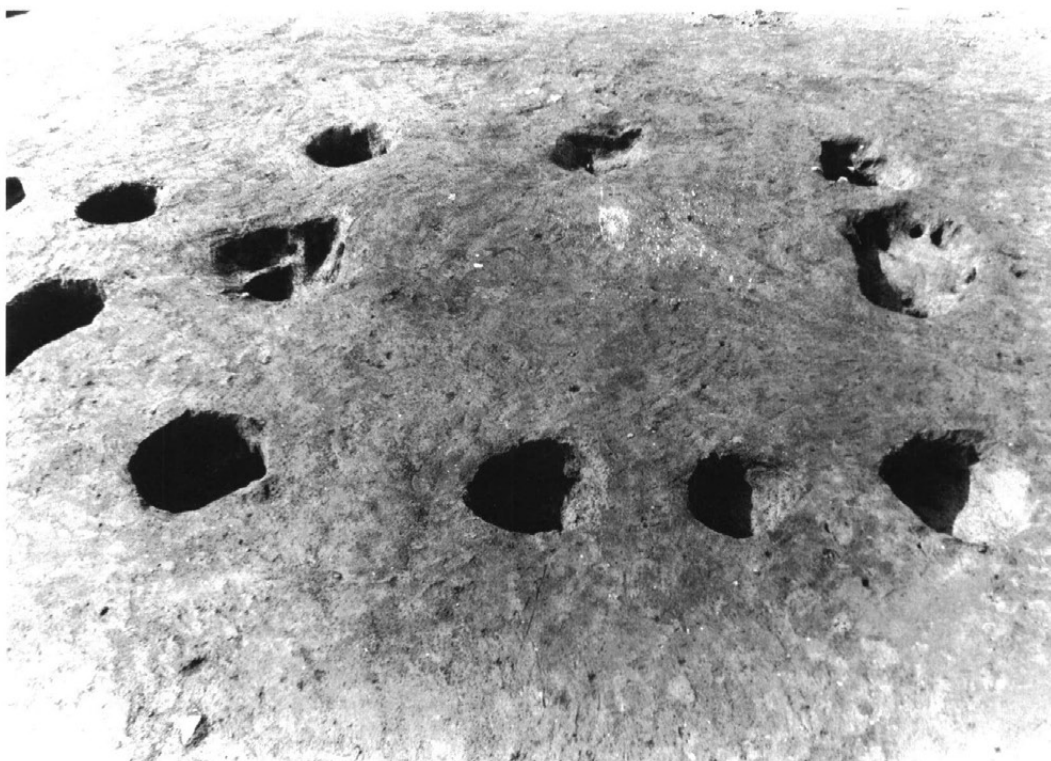
F-18号掘立柱建物址



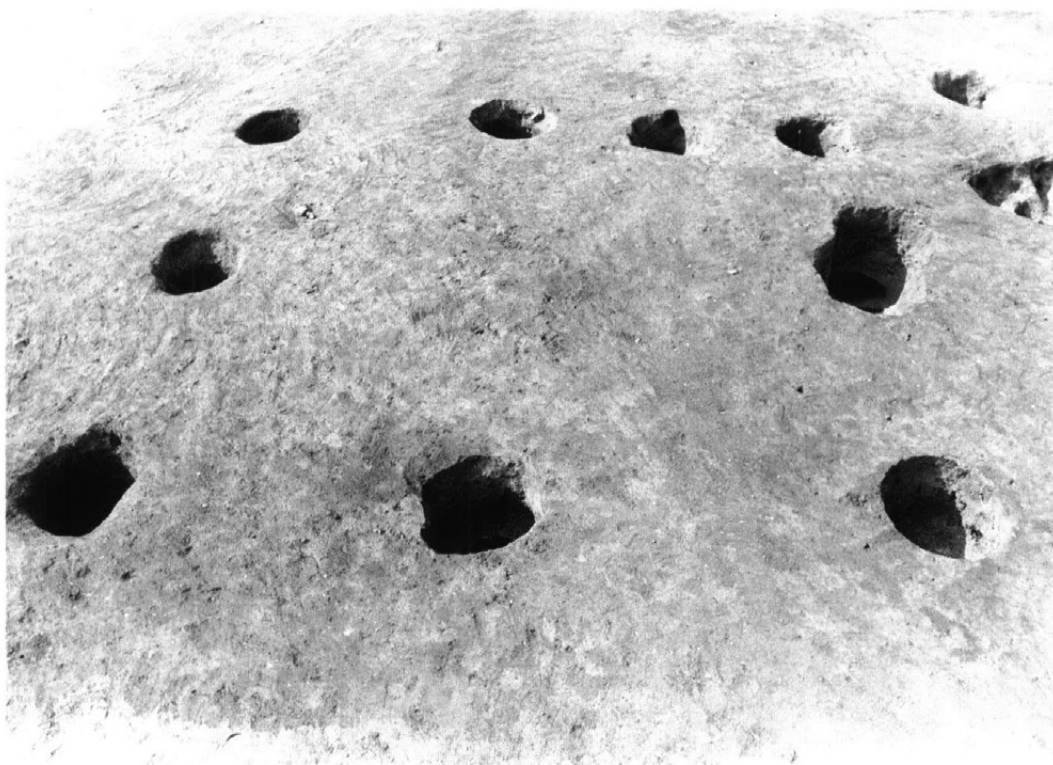
F-19号掘立柱建物址



F-20号掘立柱建物址



F-21号掘立柱建物址



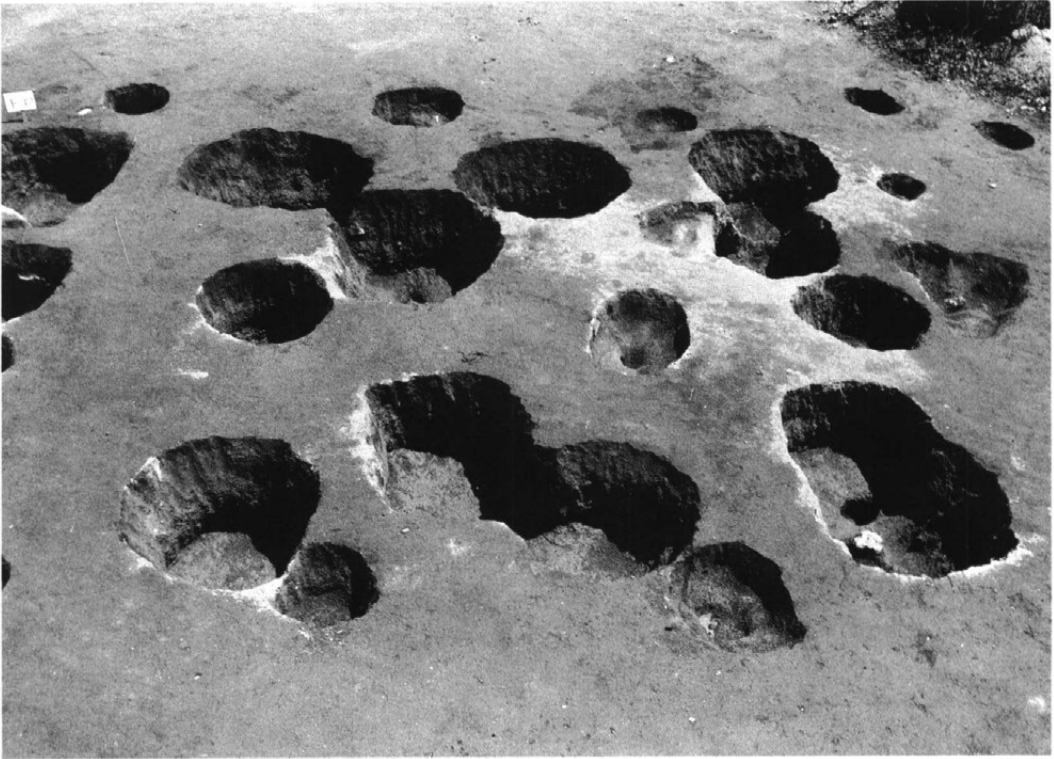
F—22号掘立柱建物址



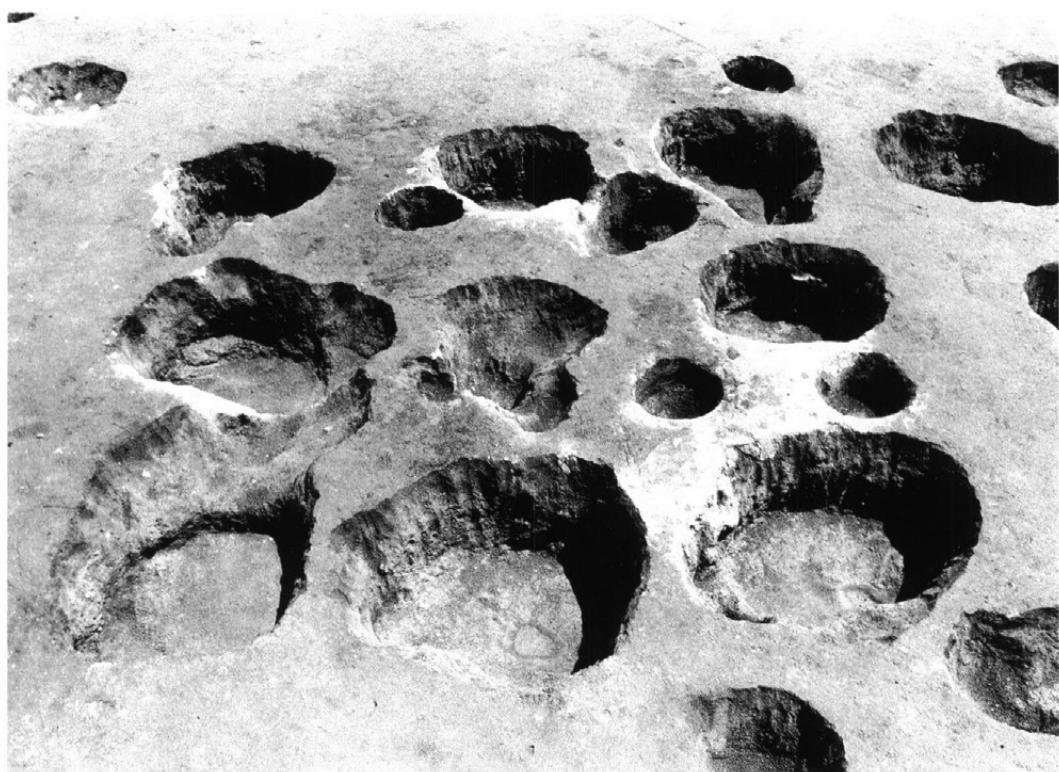
F—25号掘立柱建物址



F-27号掘立柱建物址



F-30・31・33号掘立柱建物址



F-32 · 36号掘立柱建物址



F-39号掘立柱建物址





F-51号掘立柱建物址



F-54号掘立柱建物址



F-55号掘立柱建物址



F-58号掘立柱建物址



F-64号掘立柱建物址



F-65号掘立柱建物址



F-66号掘立柱建物址



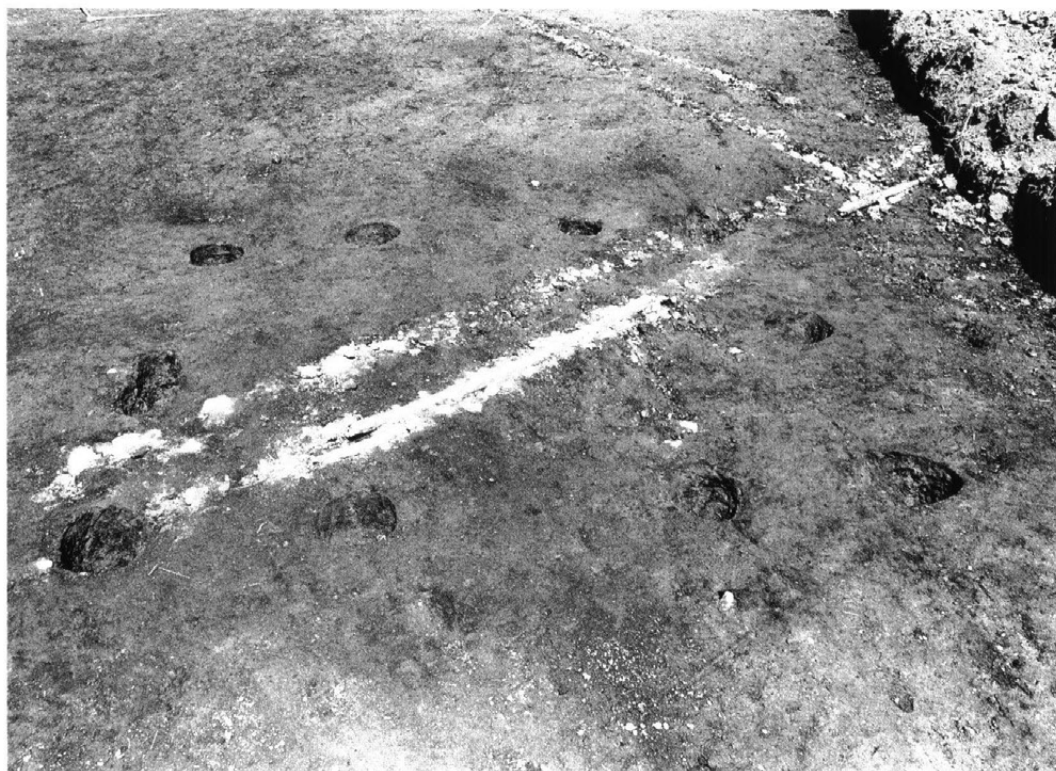
F-68号掘立柱建物址



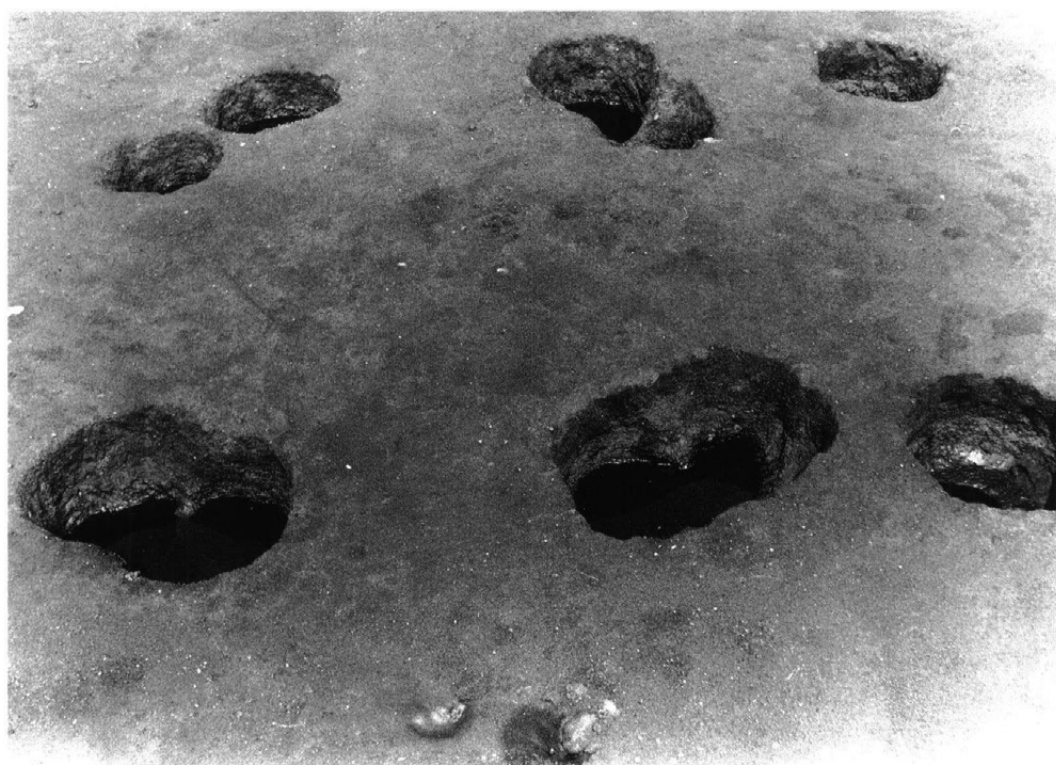
F-69号掘立柱建物址



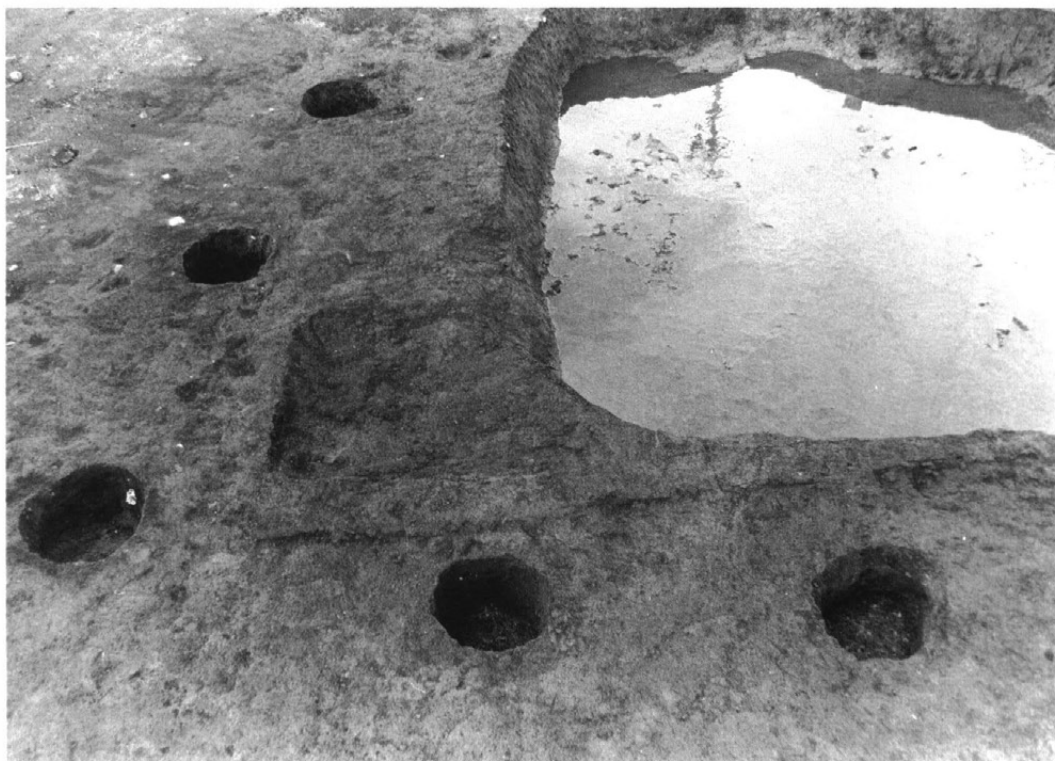
F-70号掘立柱建物址



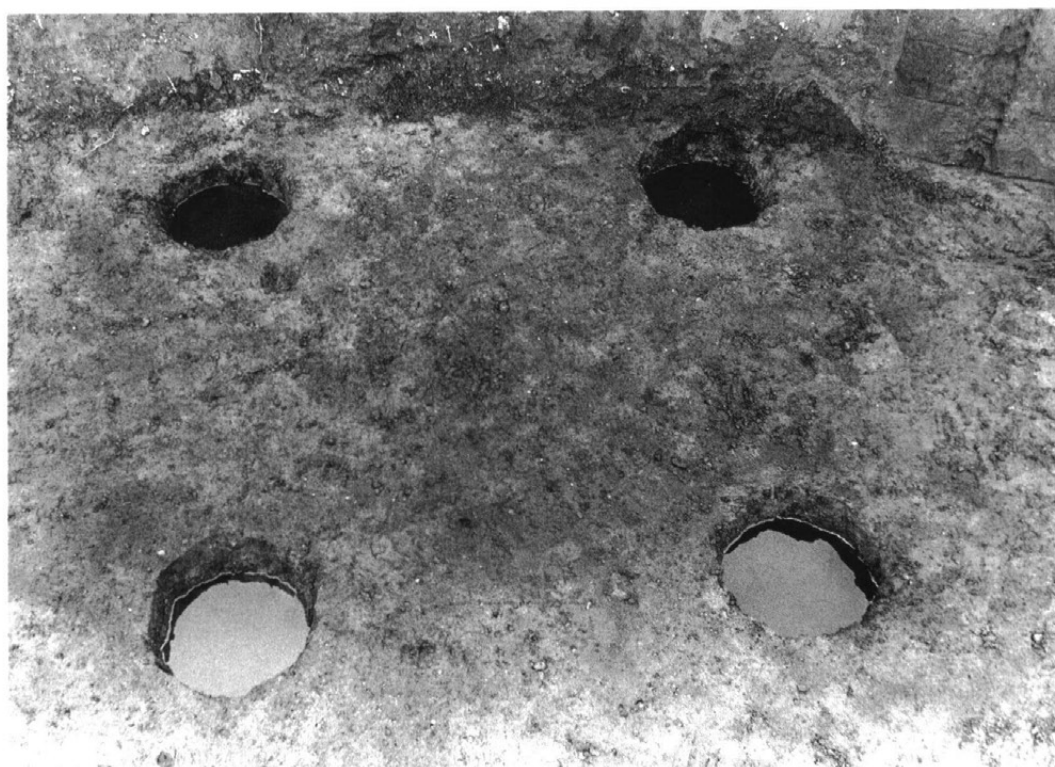
F-71号掘立柱建物址



F-72号掘立柱建物址



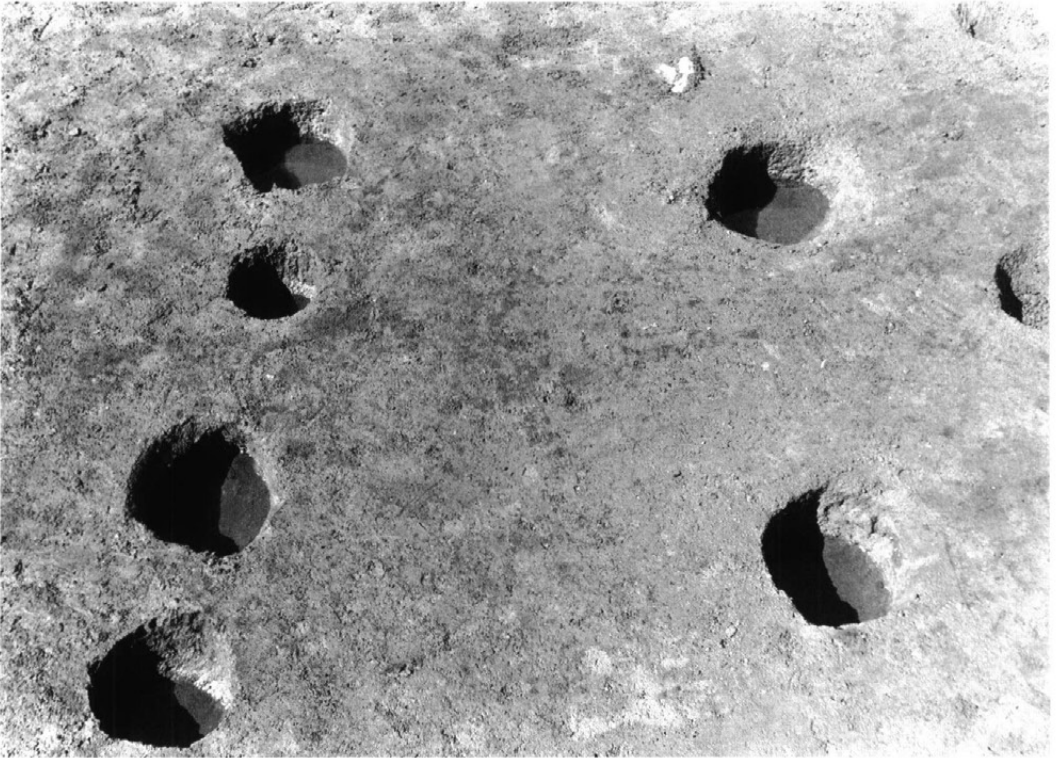
F-73号掘立柱建物址



F-74号掘立柱建物址



F-75号掘立柱建物址



F-76号掘立柱建物址

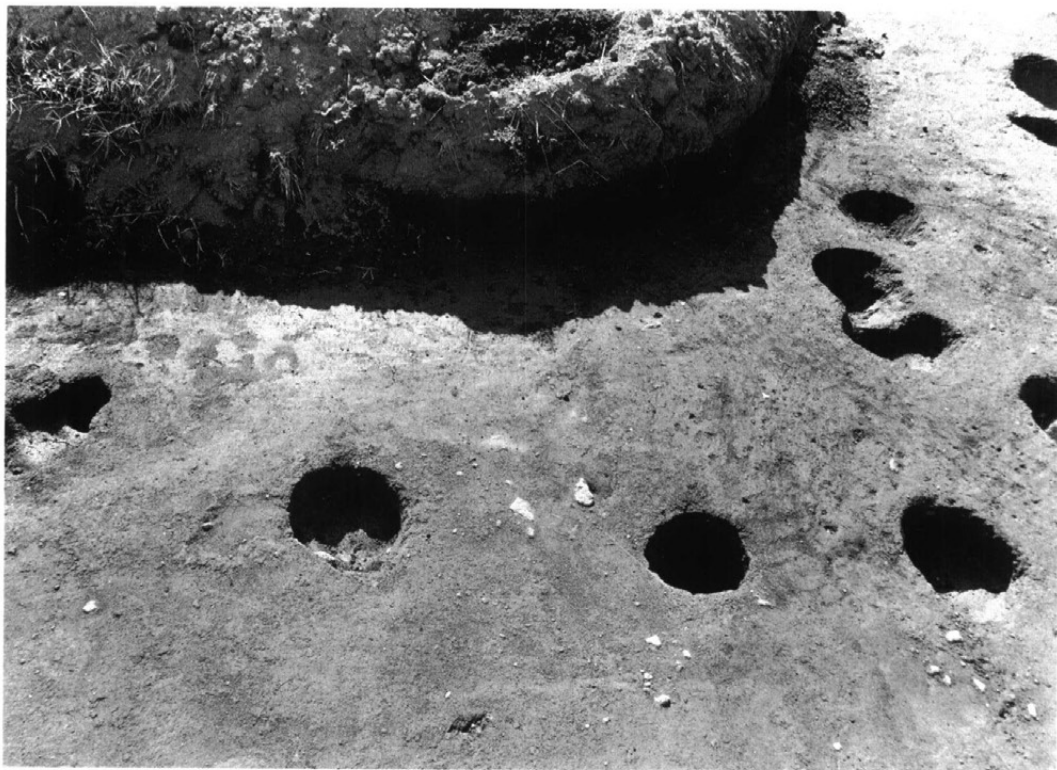




F-77号掘立柱建物址



F-78号掘立柱建物址



F—79号掘立柱建物址



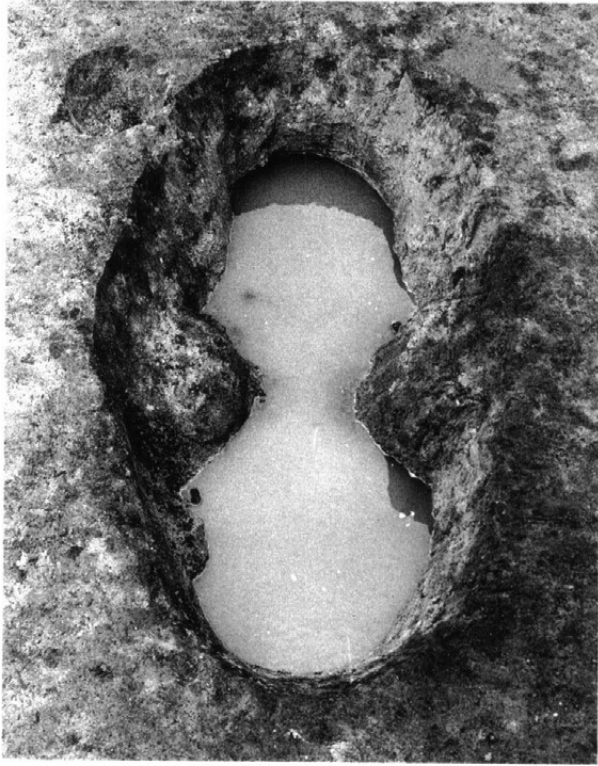
F—80号掘立柱建物址



D-1号土壤



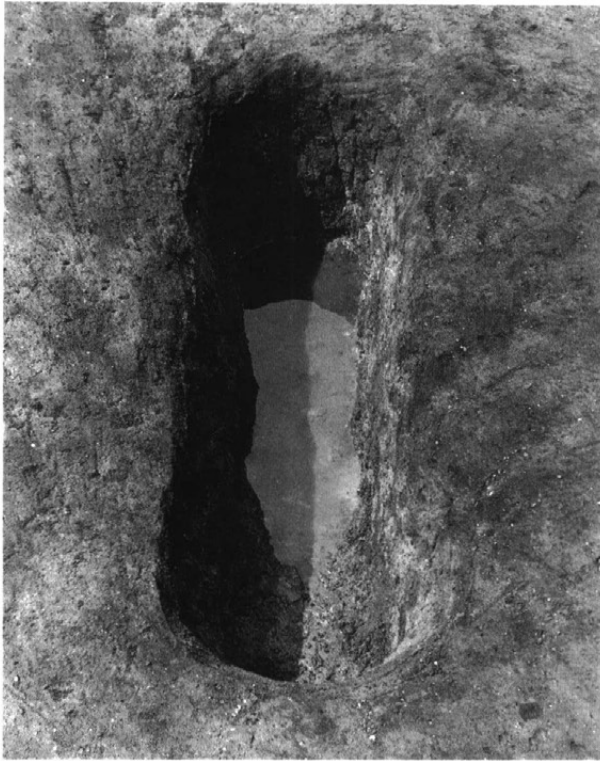
D-4号土壤



D-6号土壙



D-10土壙



D-11号土坑



D-12号土坑



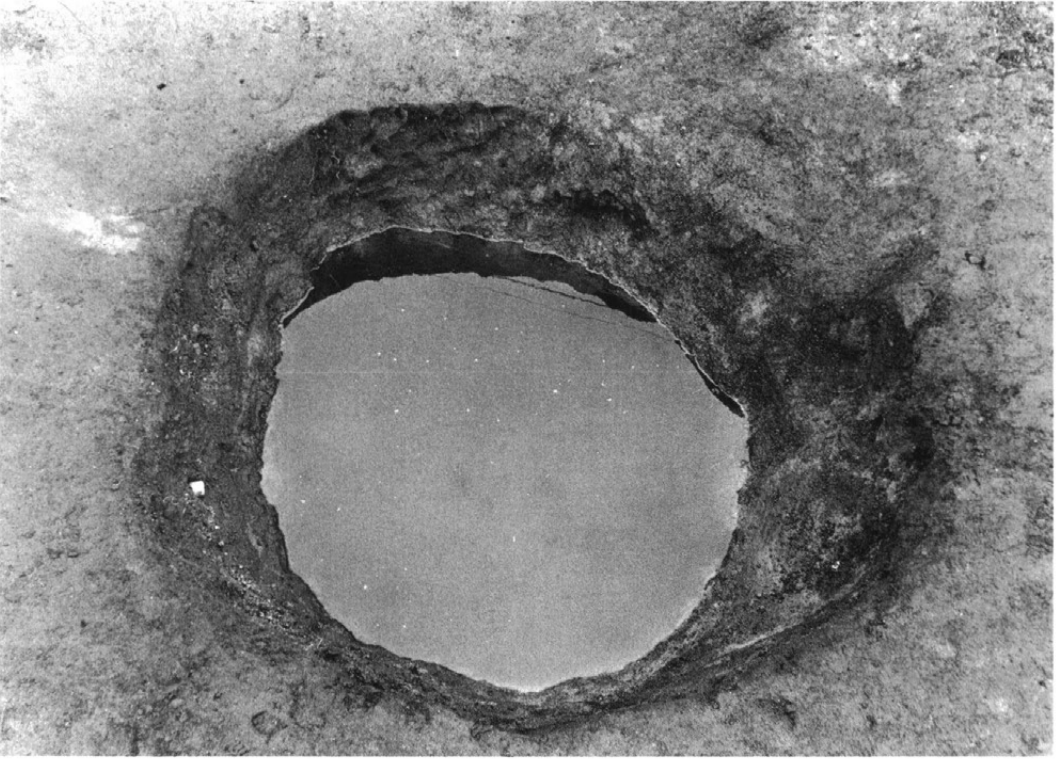
D-13号土壙



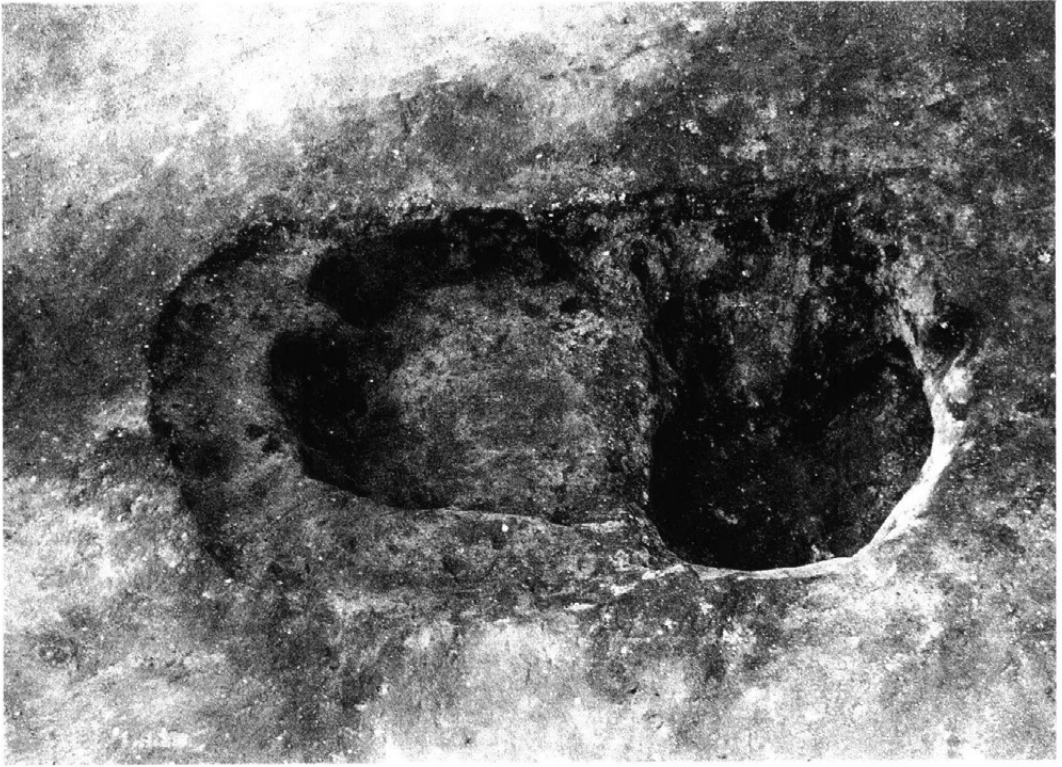
D-14・15号土壙



D-16号土坑



D-52号土坑



D-5号土壇



M-1号溝状遺構

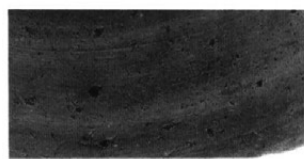




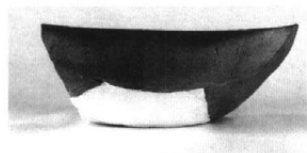
H-1・1



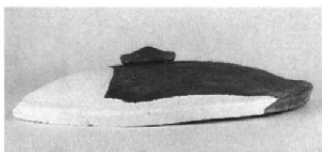
H-1・2



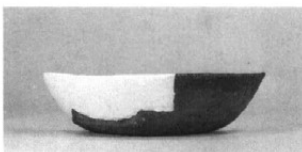
H-1・2 墨書「上」



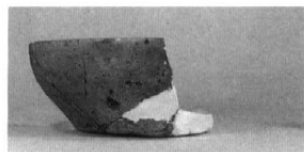
H-2・1



H-3・1



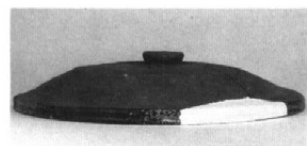
H-3・2



H-3・3



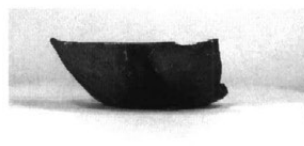
H-3・5



H-4・1



H-4・3



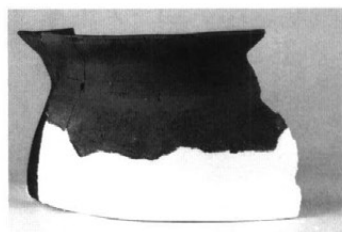
H-4・4



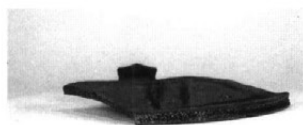
H-4・5



H-4・6



H-4



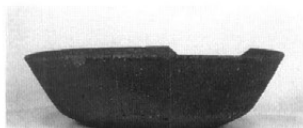
H-5·1



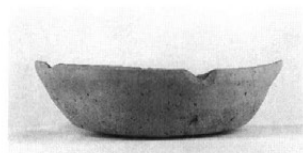
H-5·2



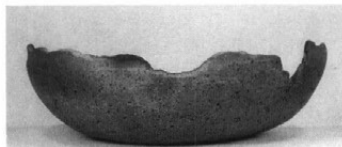
H-6·1



H-6·2



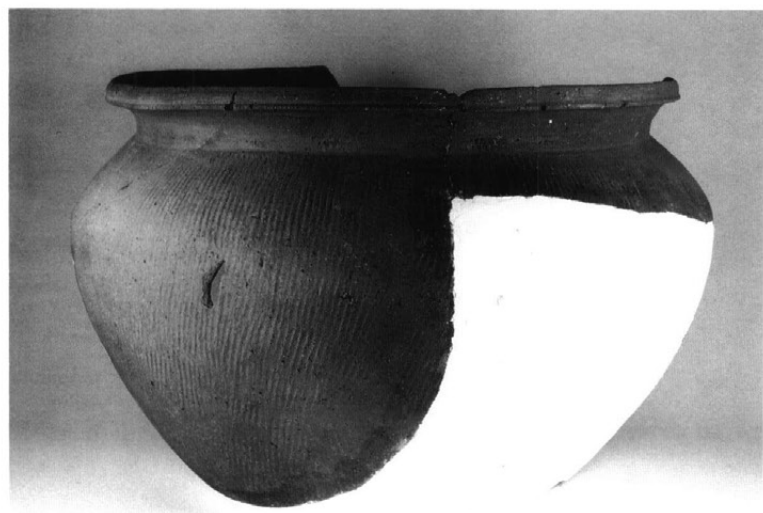
H-6·3



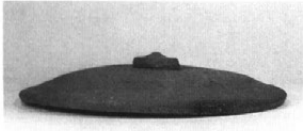
H-6·4



H-6·6



H-6·5 (H-21·2)



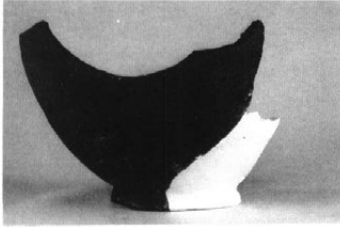
H-7・1



H-7・2



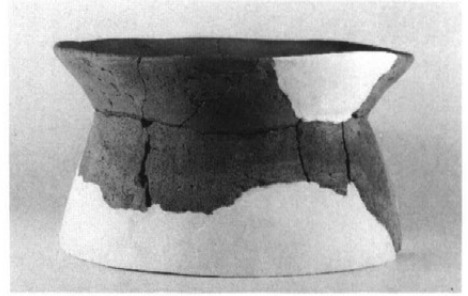
H-7・2 墨書「倉」



H-7・4



H-8・1



H-9・1



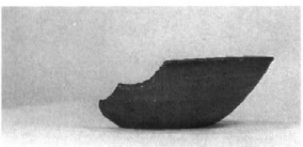
H-10・1



H-11・1



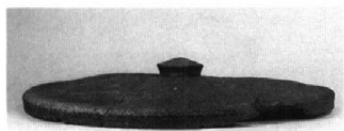
H-13・1



H-13・2



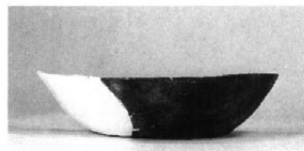
H-13・3



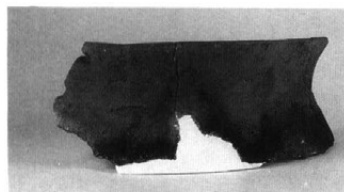
H-14 · 1



H-14 · 4



H-14 · 5



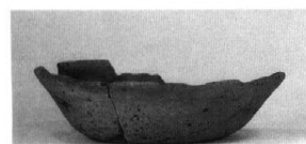
H-14 · 7



H-16 · 2



H-17 · 1



H-19 · 2



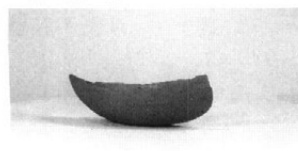
H-19 · 3



H-19 · 7



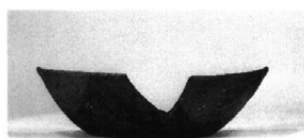
H-19 · 4



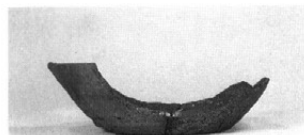
H-19 · 5



H-20 · 1



H-20 · 2



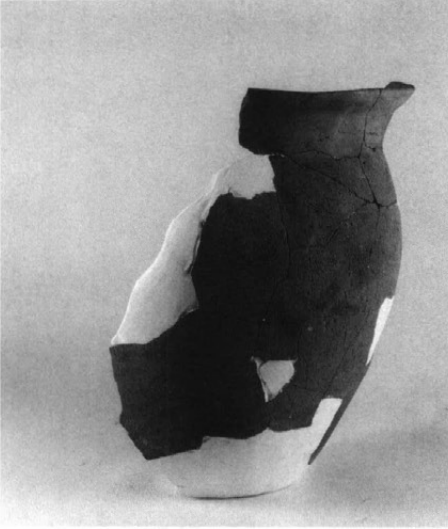
H-20 · 3



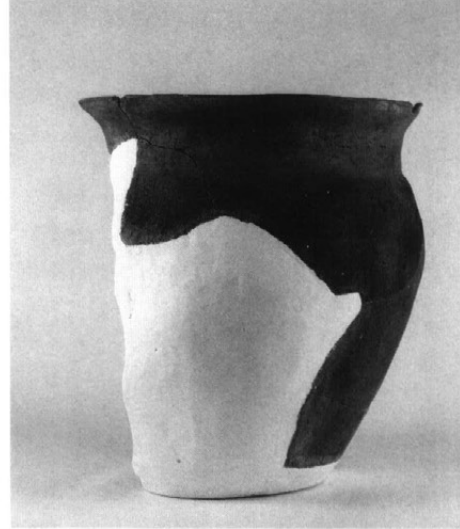
H-20・4



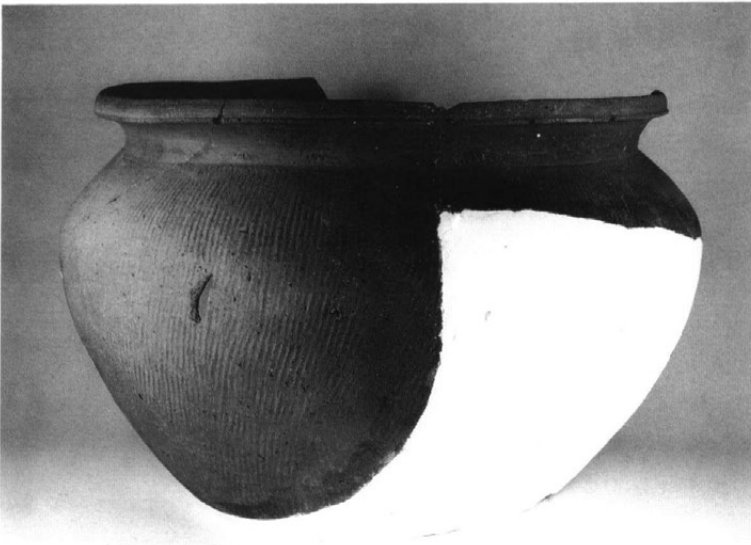
H-20・6



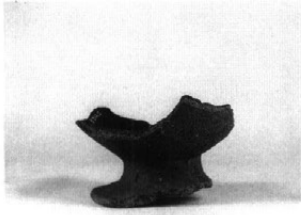
H-20・8



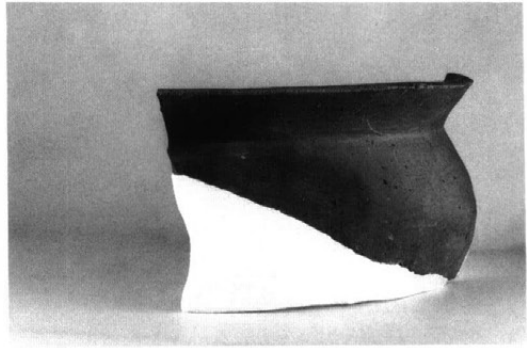
H-20・9



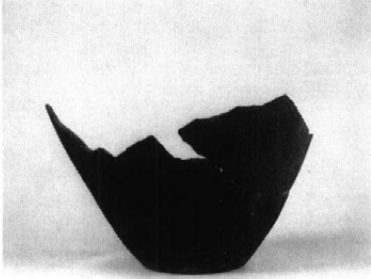
H-21・2 (H-6・5)



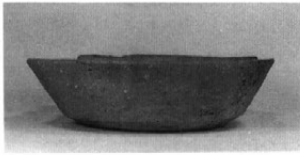
H-22 · 1



H-22 · 2



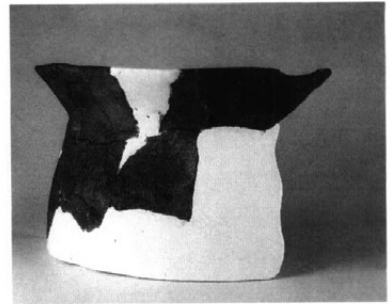
H-22 · 4



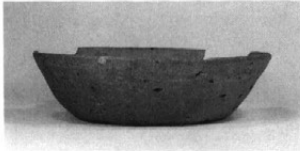
H-23 · 2



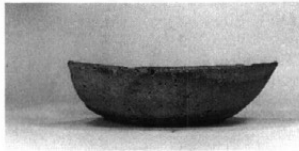
H-23 · 3



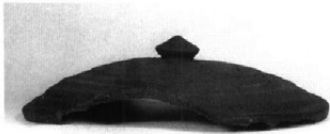
H-23 · 9



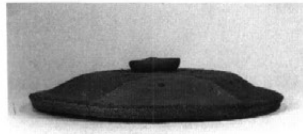
H-23 · 4



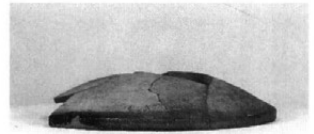
H-23 · 5



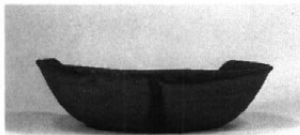
H-24 · 1



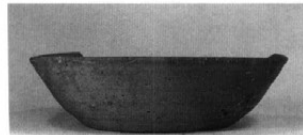
H-24 · 2



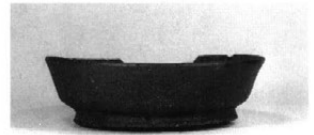
H-24 · 3



H-24 · 4



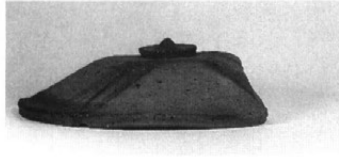
H-24 · 5



H-24 · 6



H-24・7



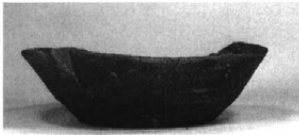
H-25・1



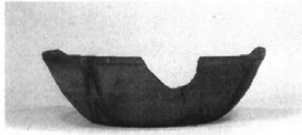
H-25・2



H-25・5



H-26・1



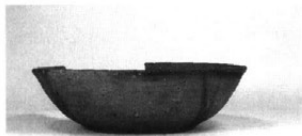
H-26・2



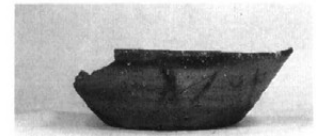
H-26・3



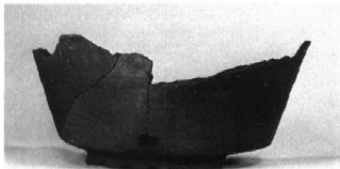
H-26・4



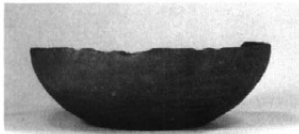
H-26・5



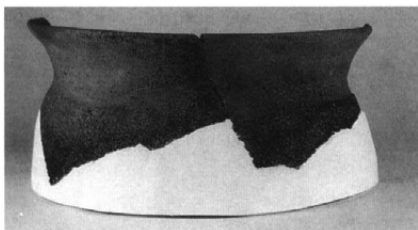
H-26・6



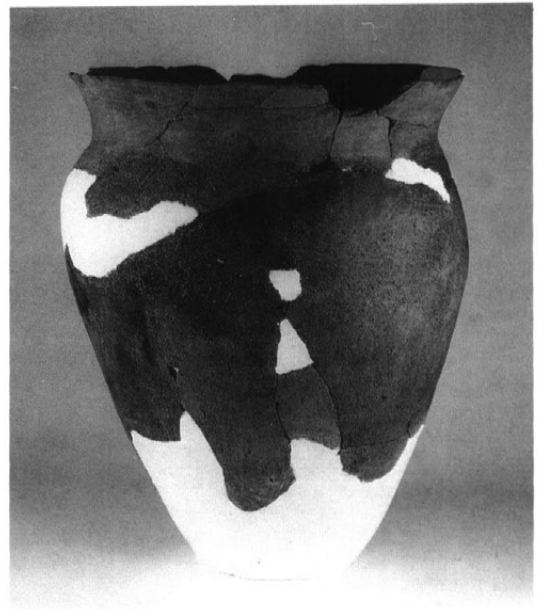
H-26・9



H-26・10



H-26・12



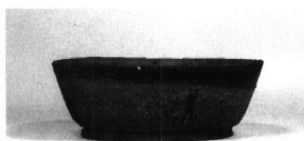
H-26・13



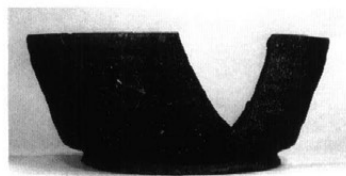
H-27・3



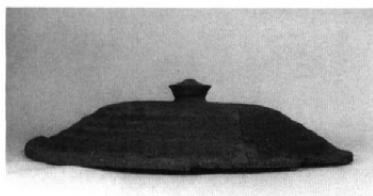
H-28・1



H-28・2



H-28・4



H-29・1



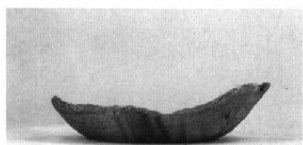
H-29・3



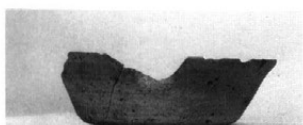
H-30・1



H-30・2



H-31・1

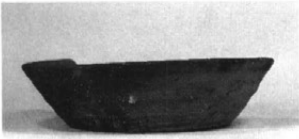


H-32・1



H-32・2





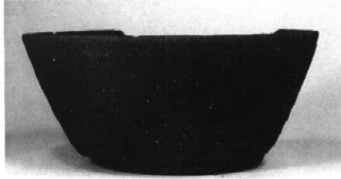
H-33·1



H-33·2



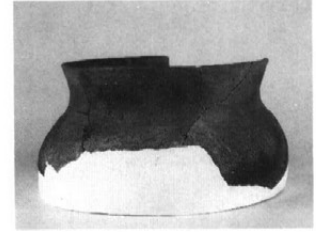
H-33·3



H-33·4



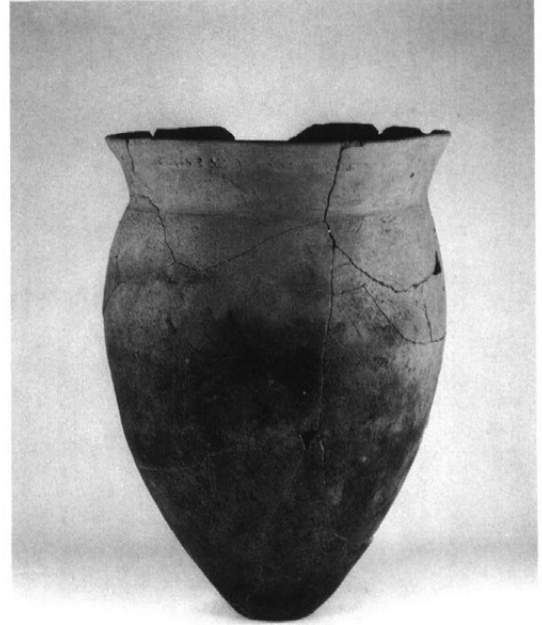
H-33·5



H-33·6



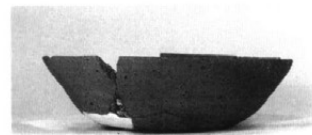
H-33·8



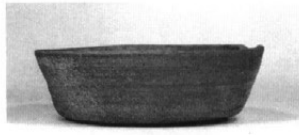
H-33·9



H-36·2



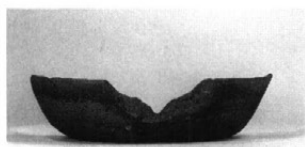
H-37·3



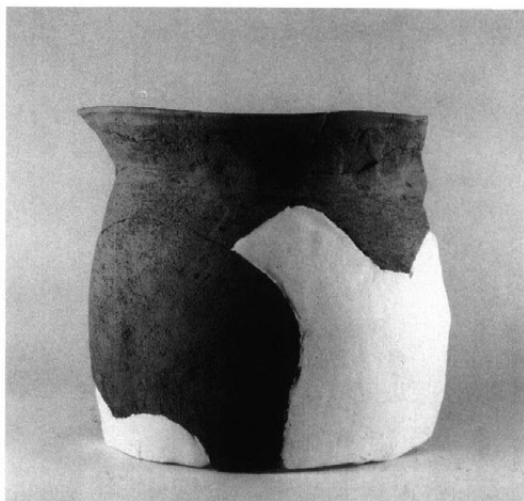
H-37·4



H-37·5



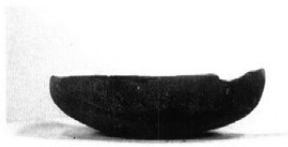
H-37 · 6



H-37 · 12



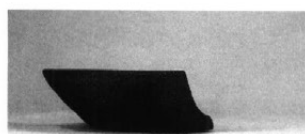
H-38 · 1



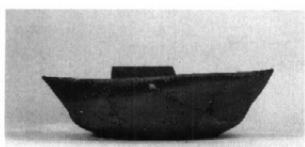
H-38 · 2



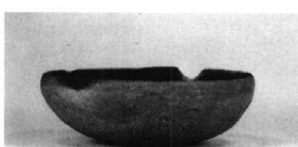
H-40 · 1



H-39 · 1



H-41 · 1



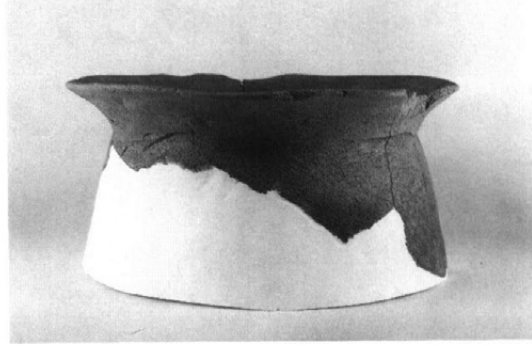
H-41 · 4



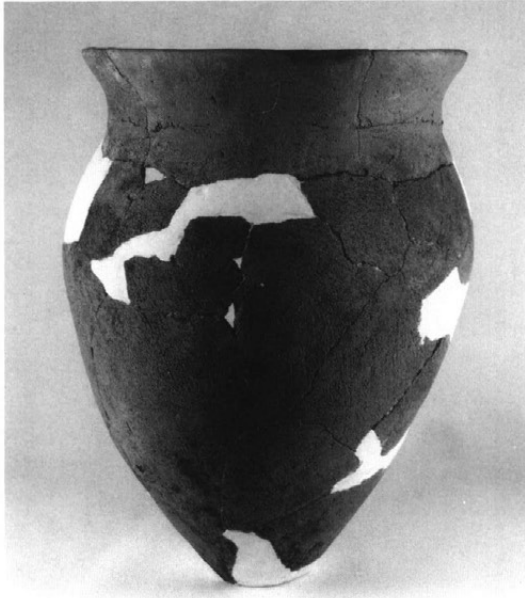
H-41 · 6



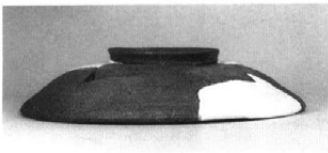
H-41・8



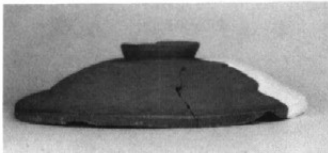
H-41・10



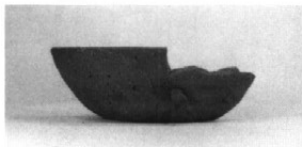
H-42・2



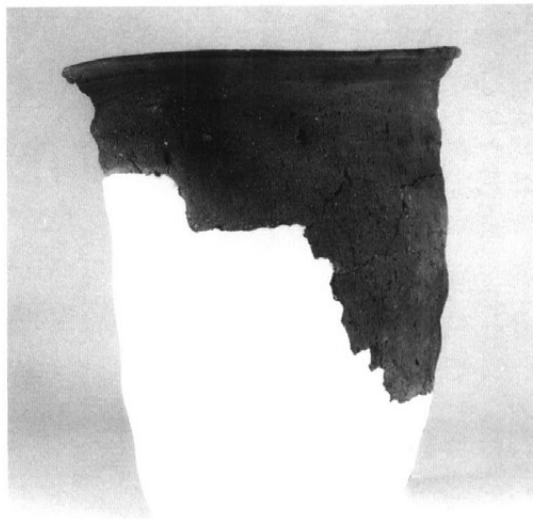
H-44・1



H-44・3



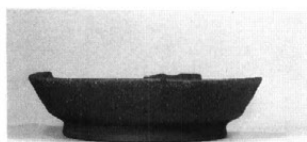
H-44・8



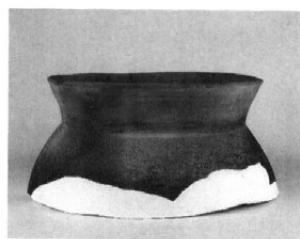
H-44・11



H-45・1



H-45・2



H-45・4



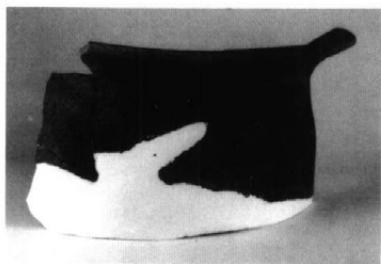
H-46・2



H-46・3



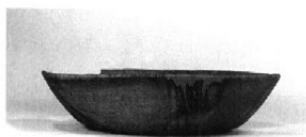
H-46・5



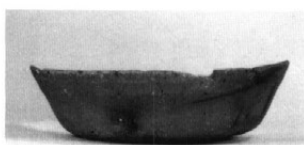
H-46・6



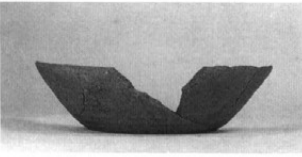
H-46・7



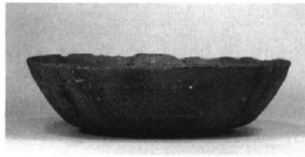
H-47・3



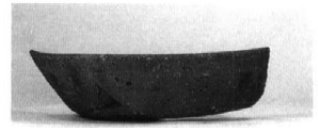
H-47・4



H-48·1



H-48·2



H-48·3



H-48·8



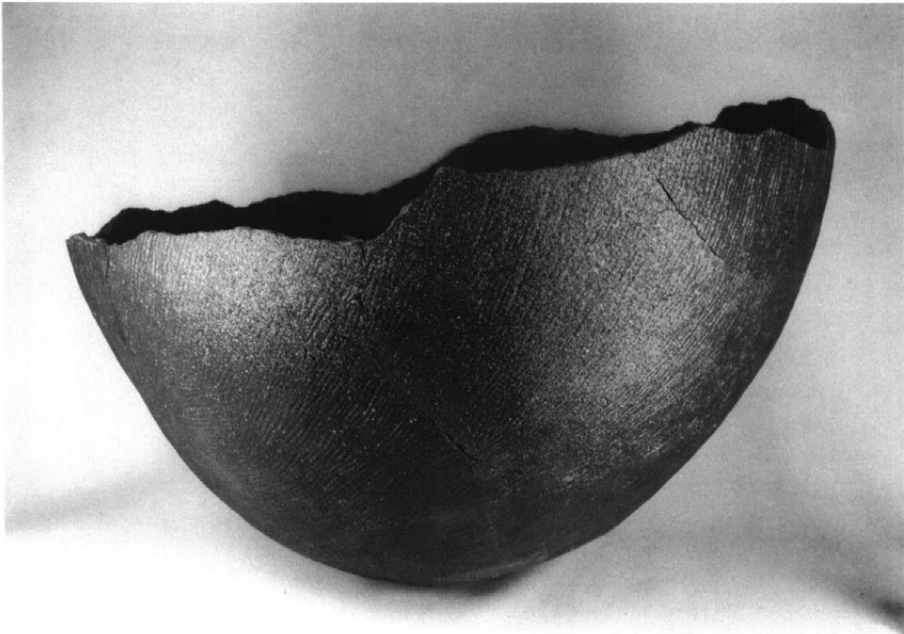
H-48·10



H-48·9



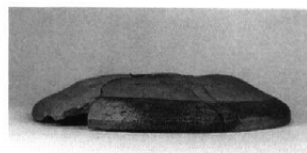
H-48·11



H-48·12



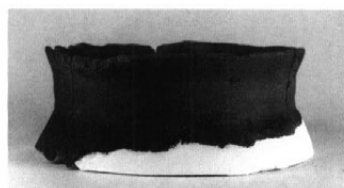
H-48 · 13



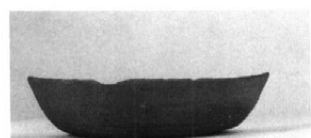
H-49 · 1



H-49 · 2



H-51 · 1



H-52 · 1



H-52 · 2



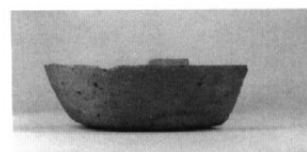
H-52 · 7



H-53 · 1



H-53 · 3



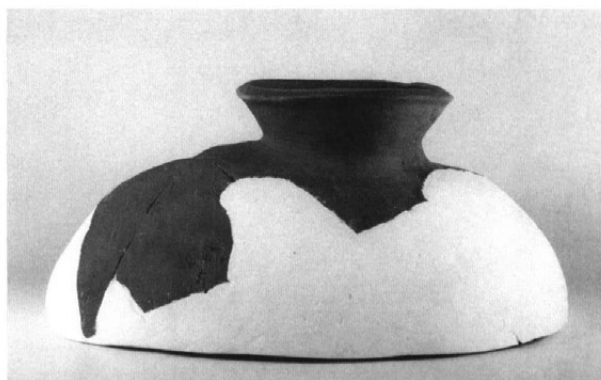
H-53 · 5



H-53・6



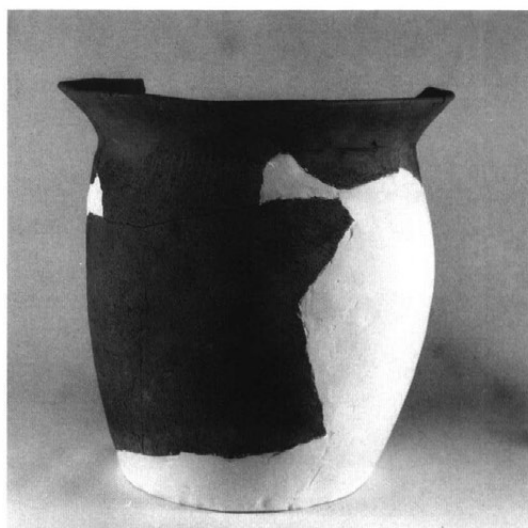
H-53・8



H-53・13



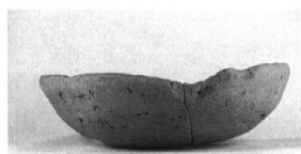
H-53・14



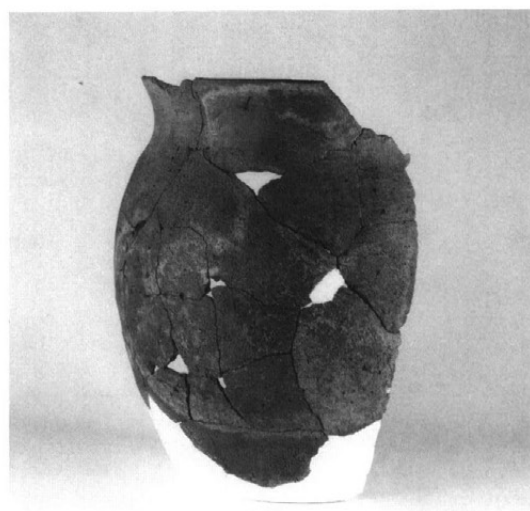
H-53・15



H-54・1



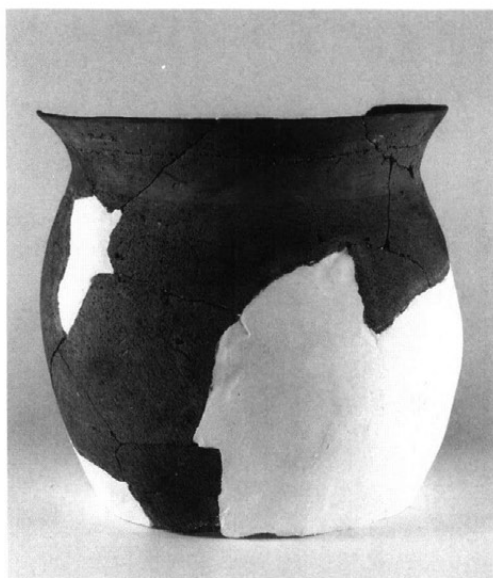
H-54・3



H-54・5



H-54 · 6



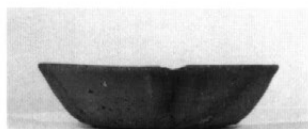
H-54 · 7



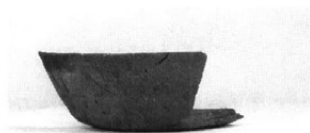
H-55 · 1



H-55 · 2



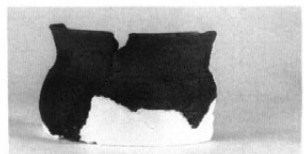
H-55 · 4



H-57 · 1



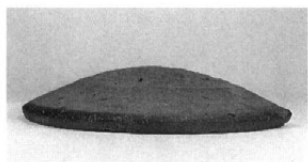
H-57 · 2



H-57 · 3



H-58 · 2

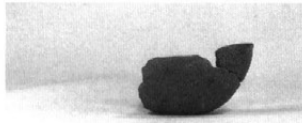


H-59 · 1

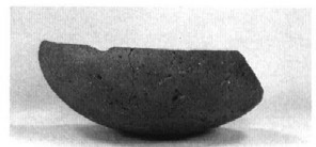




H-60・1



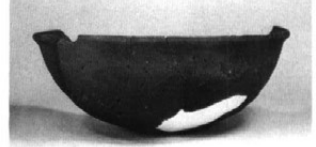
H-60・2



H-60・4



H-60・5



H-60・7



H-60・8



H-60・9



H-60・10



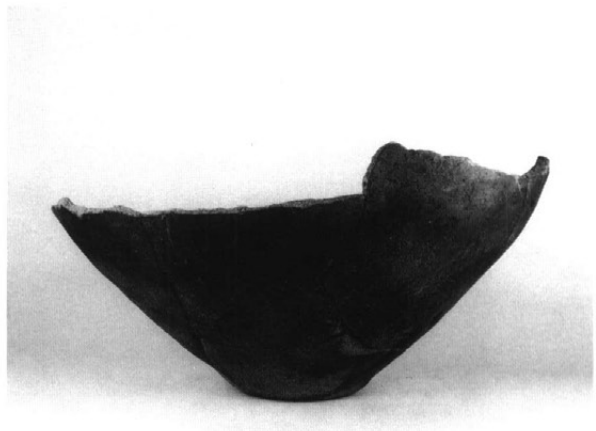
H-60・11



H-60・14



H-60・13



H-60・15



H-61·1



H-61·2



H-61·3



H-61·5



H-61·6



H-61·7



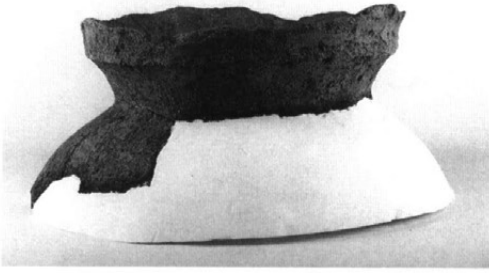
H-61·10



H-61·11



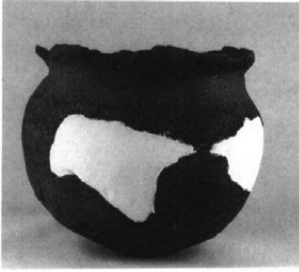
H-61·12



H-61・16



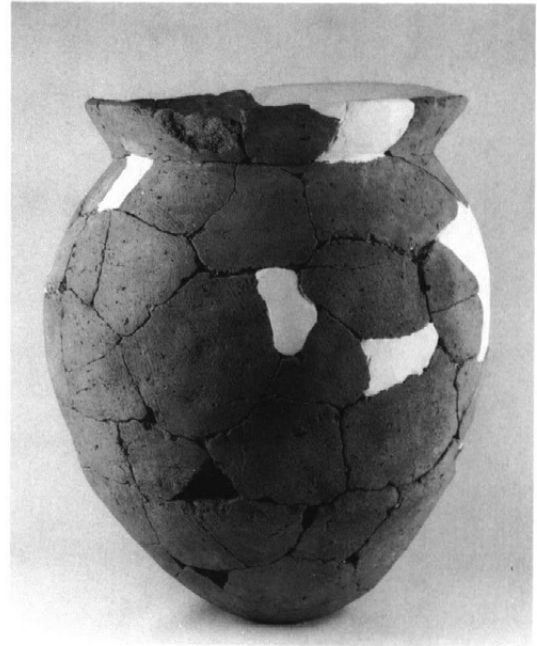
H-61・19



H-61・17



H-61・18



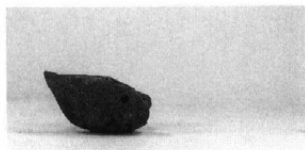
H-61・20



H-62・1



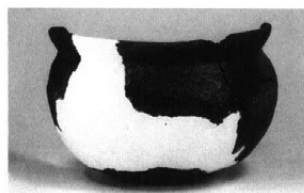
H-62・2



H-63・1



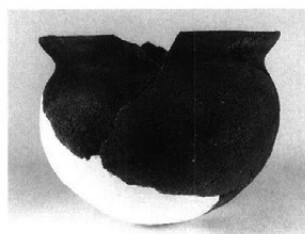
H-63・2



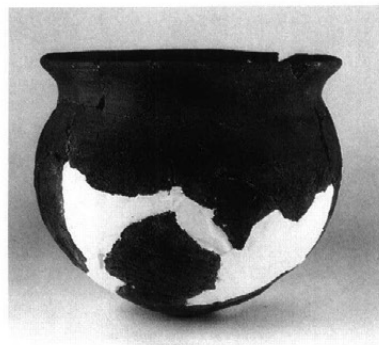
H-63・4



H-63・5



H-63・6



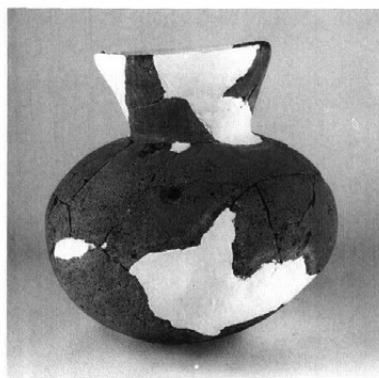
H-63・7



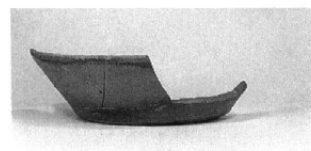
H-63・8



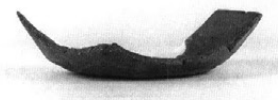
H-63・9



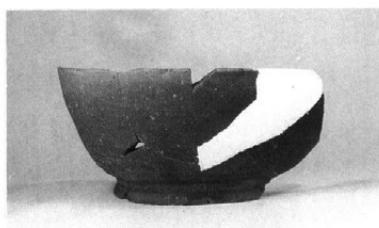
H-63・10



H-64・1



H-64・4



H-64・6



H-65·1



H-65·3



H-66·3



H-66·5



H-66·6



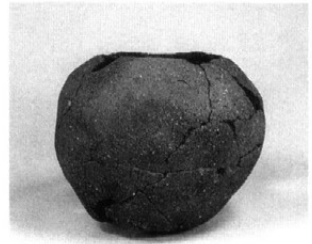
H-66·7



H-67・2



H-67・4



H-67・5



H-68・2



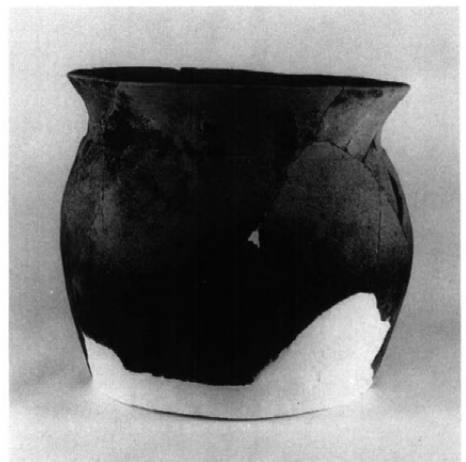
H-68・4



H-68・7



H-69・2



H-70・1



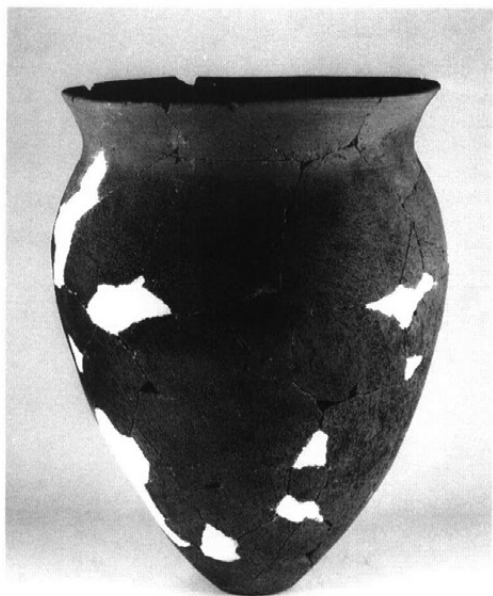
H-72・1



H-72・4



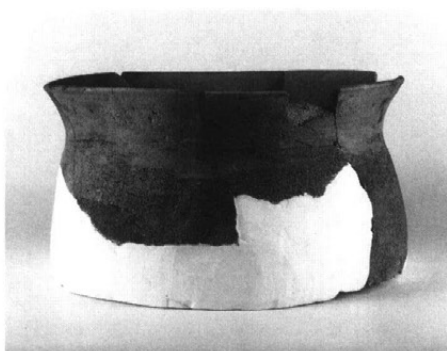
H-72・6



H-72・7



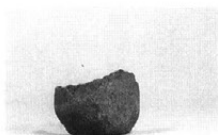
H-72・8



H-72・9



H-73, H-74・1



H-75·2



H-75·3



H-75·5



H-75·6



H-75·7



H-75·8



H-75·10



H-75·11



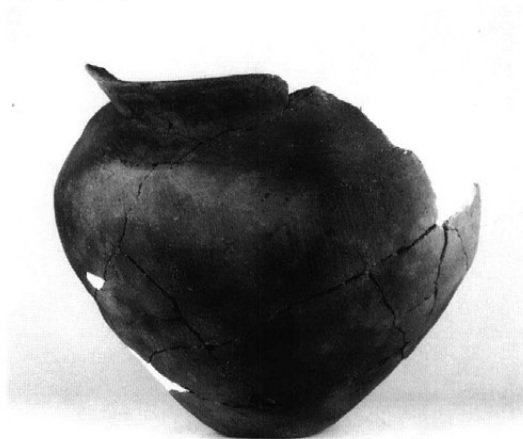
H-75·16



H-75·13

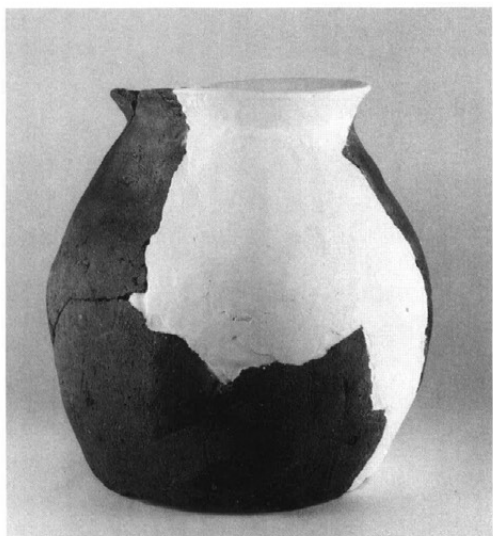


H-75·15

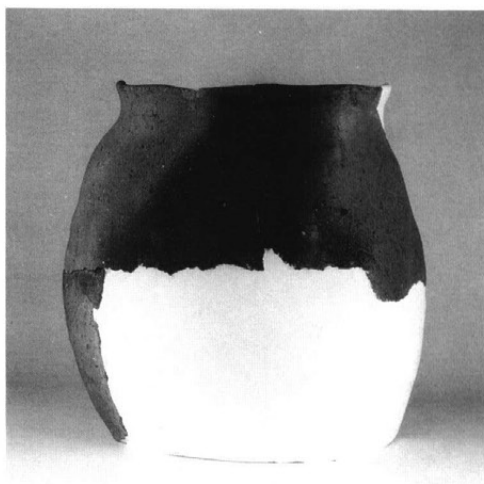


H-75·17

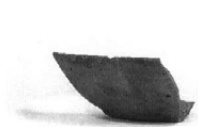




H-75・19



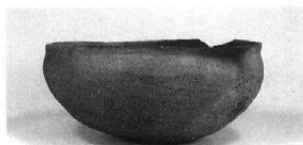
H-75・20



H-76・1



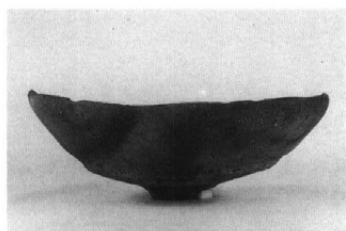
H-77・1



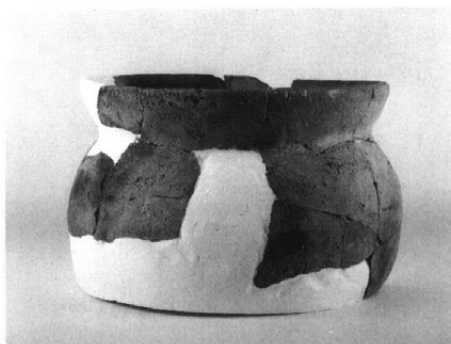
H-77・3



H-77・6



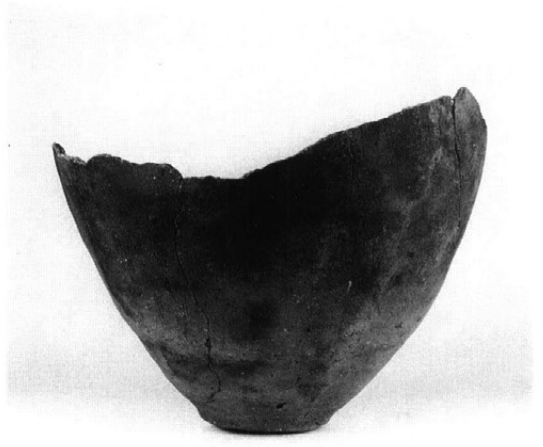
H-77・7



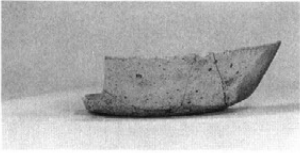
H-77・11



H-77・10



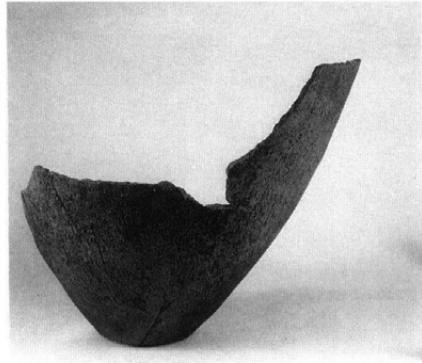
H-77・12



H-79・2



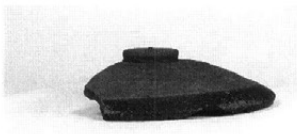
H-79・3



H-79・5



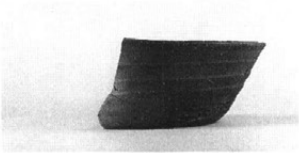
H-80・1



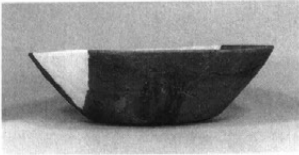
H-80・2



H-80・4



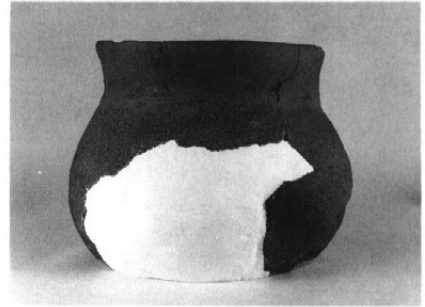
H-80・5



H-81・1



H-81・5



H-81・6



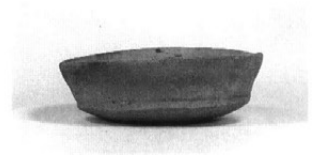
H-83・1



H-84・1



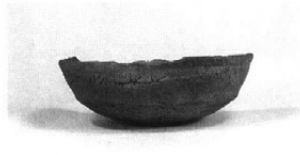
H-84・2



H-84・3



H-84・4



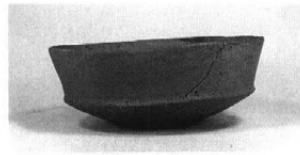
H-84・5



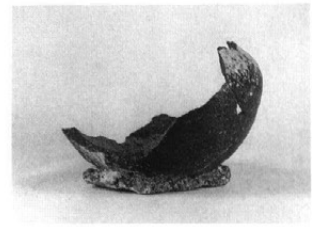
H-84・6



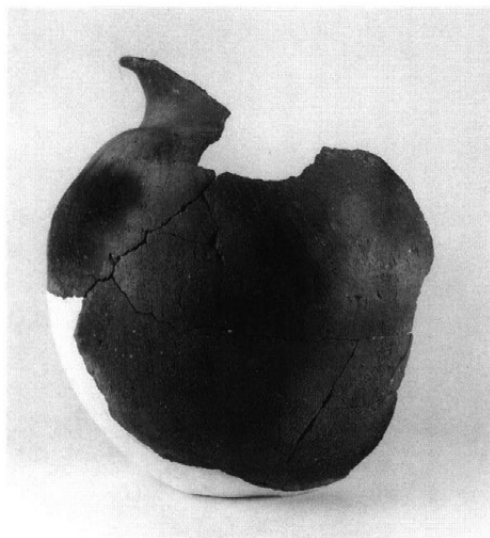
H-84・7



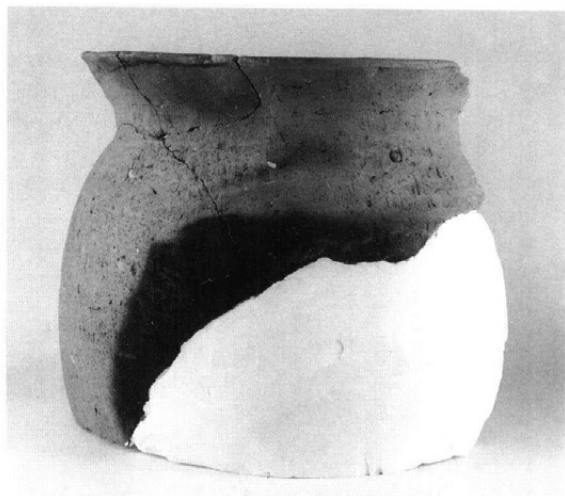
H-84・8



H-84・11



H-84・14



H-84・15



H-84・12



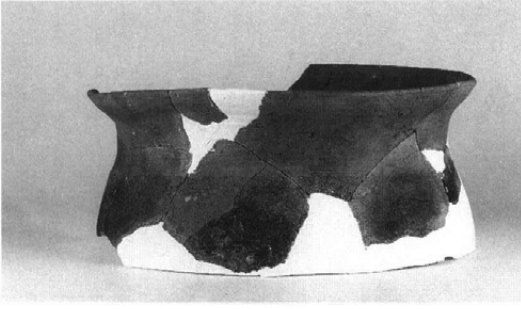
H-84・13



H-84・16



H-84・17



H-85・1



H-86・2



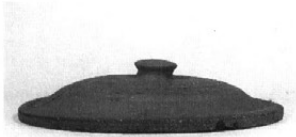
H-86・3 (H-87・3)



H-86・5



H-86・6



H-87・1



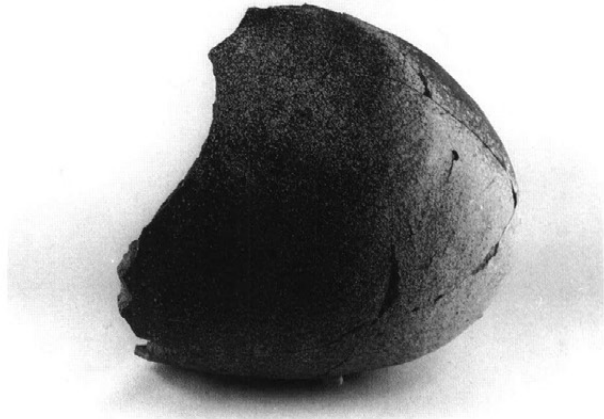
H-87・2



H-87・3 (H-86・3)



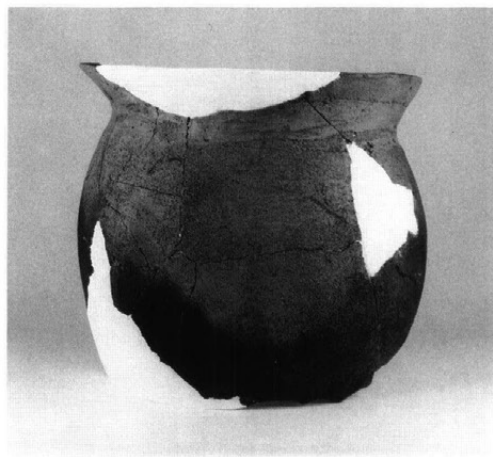
H-87・5



H-87・7



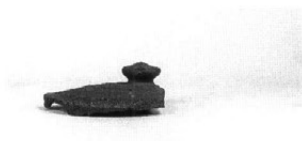
H-87・8



H-87・9



H-88・1



H-89・1



H-89・2



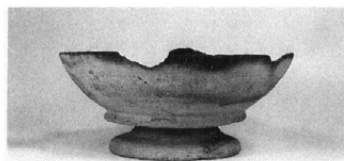
H-89・3



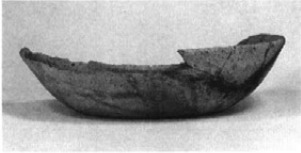
H-89・4



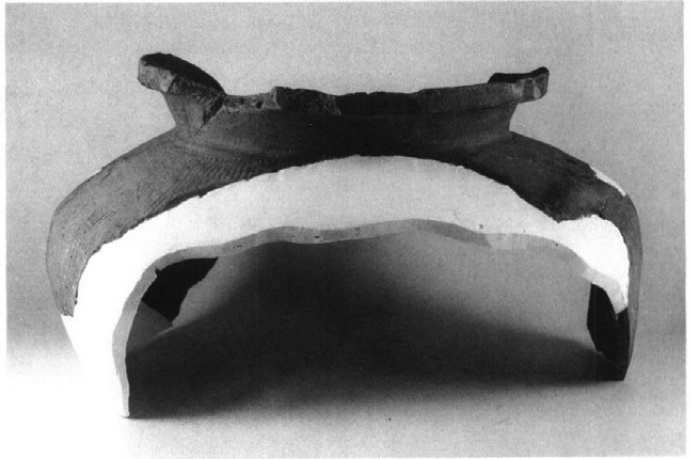
H-92・1



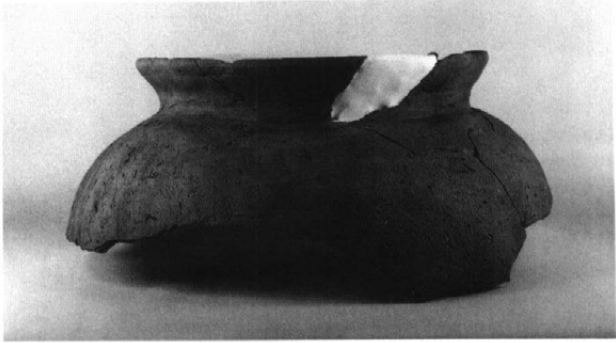
H-93・1



H-97・1



H-97・2



H-97・3



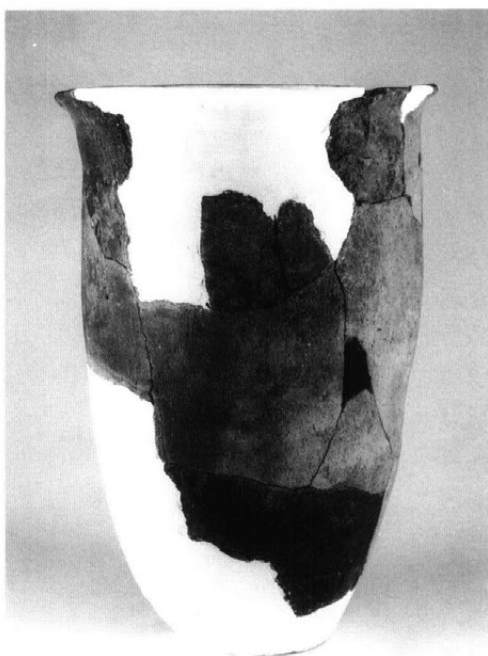
H-98・1



H-98・3



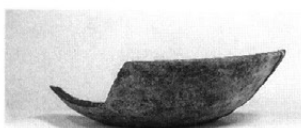
H-99・3



H-99・4



H-99・8

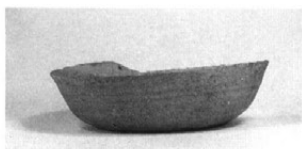


H-100・1





H-101・1



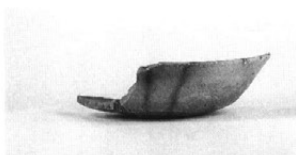
H-101・2



H-101・4



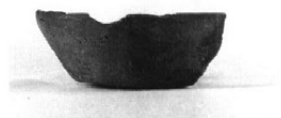
H-103・2



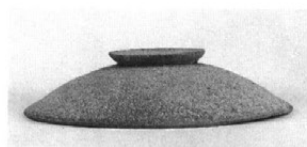
H-103・4



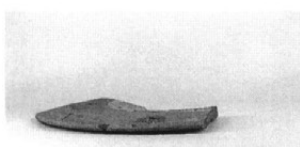
H-104・1



H-105・1



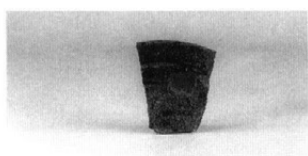
H-107・1



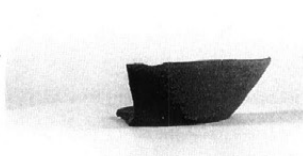
H-107・2



H-107・3



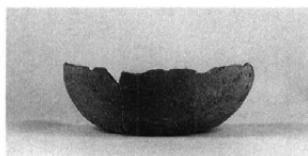
H-108 · 1



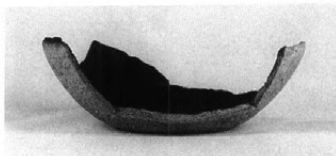
H-108 · 3



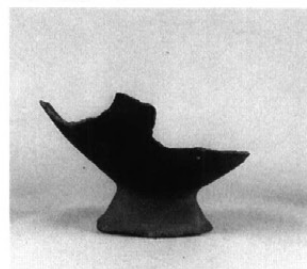
H-108 · 6



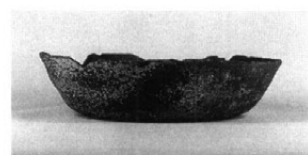
H-108 · 7



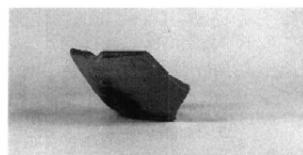
H-108 · 8



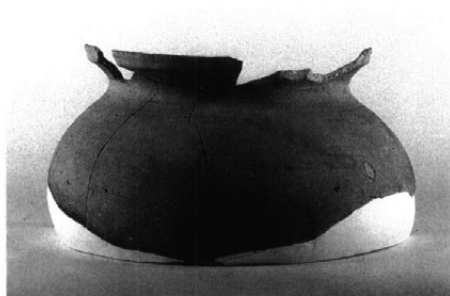
H-108 · 18



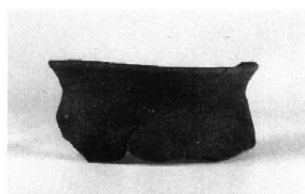
H-111 · 3



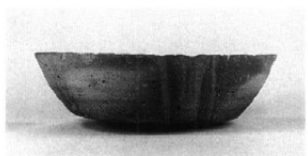
H-111 · 5



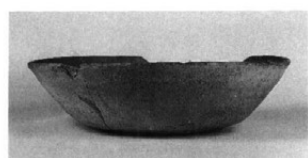
H-111 · 9



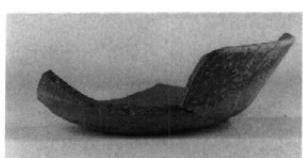
H-111 · 10



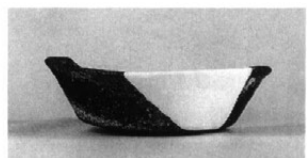
H-112 · 1



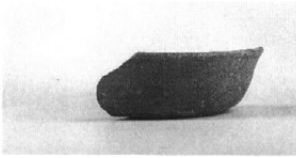
H-113 · 1



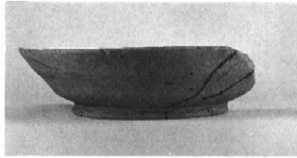
H-113 · 2



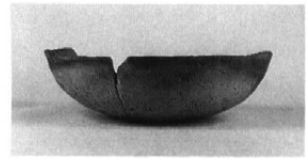
H-113 · 3



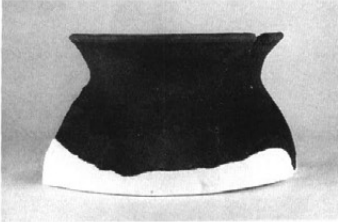
H-113 · 4



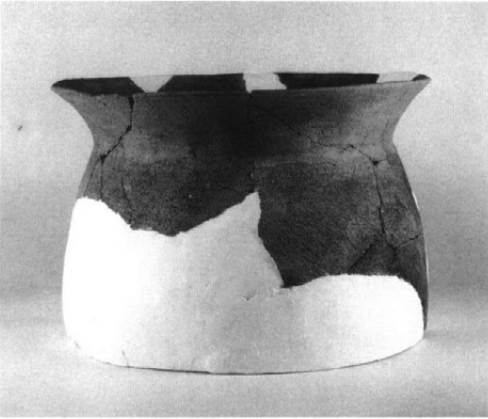
H-113 · 5



H-113 · 6



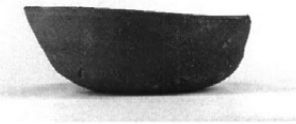
H-113 · 9



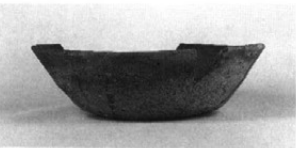
H-113 · 12



H-113 · 11



H-114 · 1



H-115 · 1



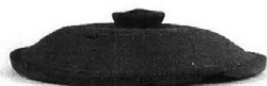
H-115 · 2



H-115 · 5



H-115 · 3



H-117・1



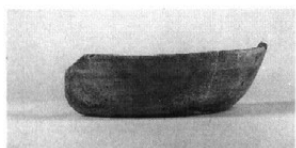
H-117・4



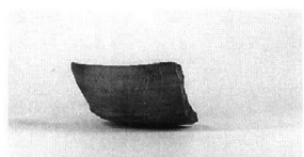
F-48・1



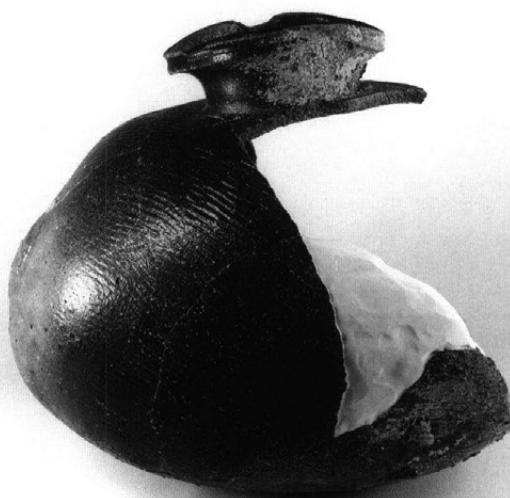
F-49・1



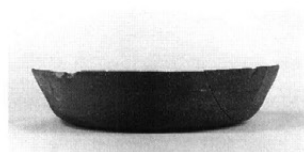
表採・1



表採・3



H-117・6



D-1・1



D-52・6



表採・4



表採・5



H-61 · 24



H-61 · 25



H-66 · 12



H-111 · 15



H-60 · 17



H-61 · 26

H-75 · 21



H-75 · 22



H-75 · 23

石製品・土製品 (1 : 2)



H-15 · 1



H-16 · 9



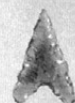
H-26 · 14



H-28 · 6



H-68 · 9



H-68 · 10

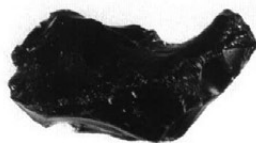


H-81 · 12

石鏃 (2 : 3)



H-11 · 4



H-24 · 8



H-55 · 10

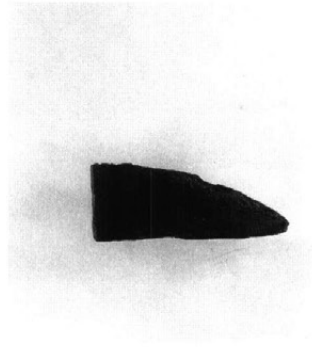


H-109 · 2

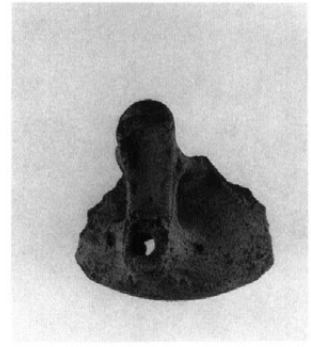
石器 (2 : 3)



打製石斧H-92・2 (1 : 3)



瓦H-112・4 (1 : 4)



縄文土器H-28・5 (1 : 4)



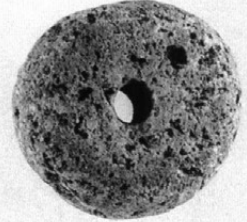
H-18・1



H-19・11



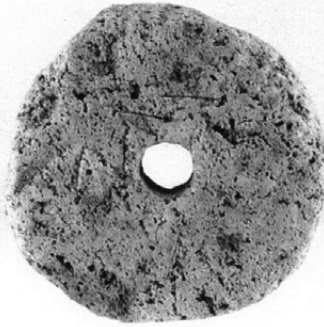
H-60・16



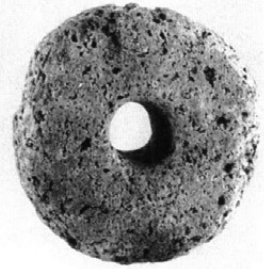
H-54・10



H-41・15



H-53・16



H-55・11



表採・8



H-29・4



H-43・3



H-48・16



H-79・6



H-79・7

紡錘車 (1 : 3)



H-6 · 7



H-21 · 6



H-37 · 14



H-55 · 12



H-63 · 16



H-20 · 12



H-30 · 4



H-54 · 11



H-58 · 4



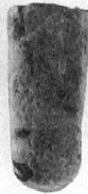
H-63 · 17



H-66 · 13



H-67 · 11



H-94 · 2



H-104 · 5



H-11 · 3



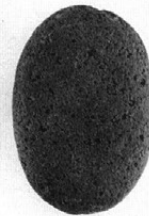
H-66 · 14



H-67 · 12

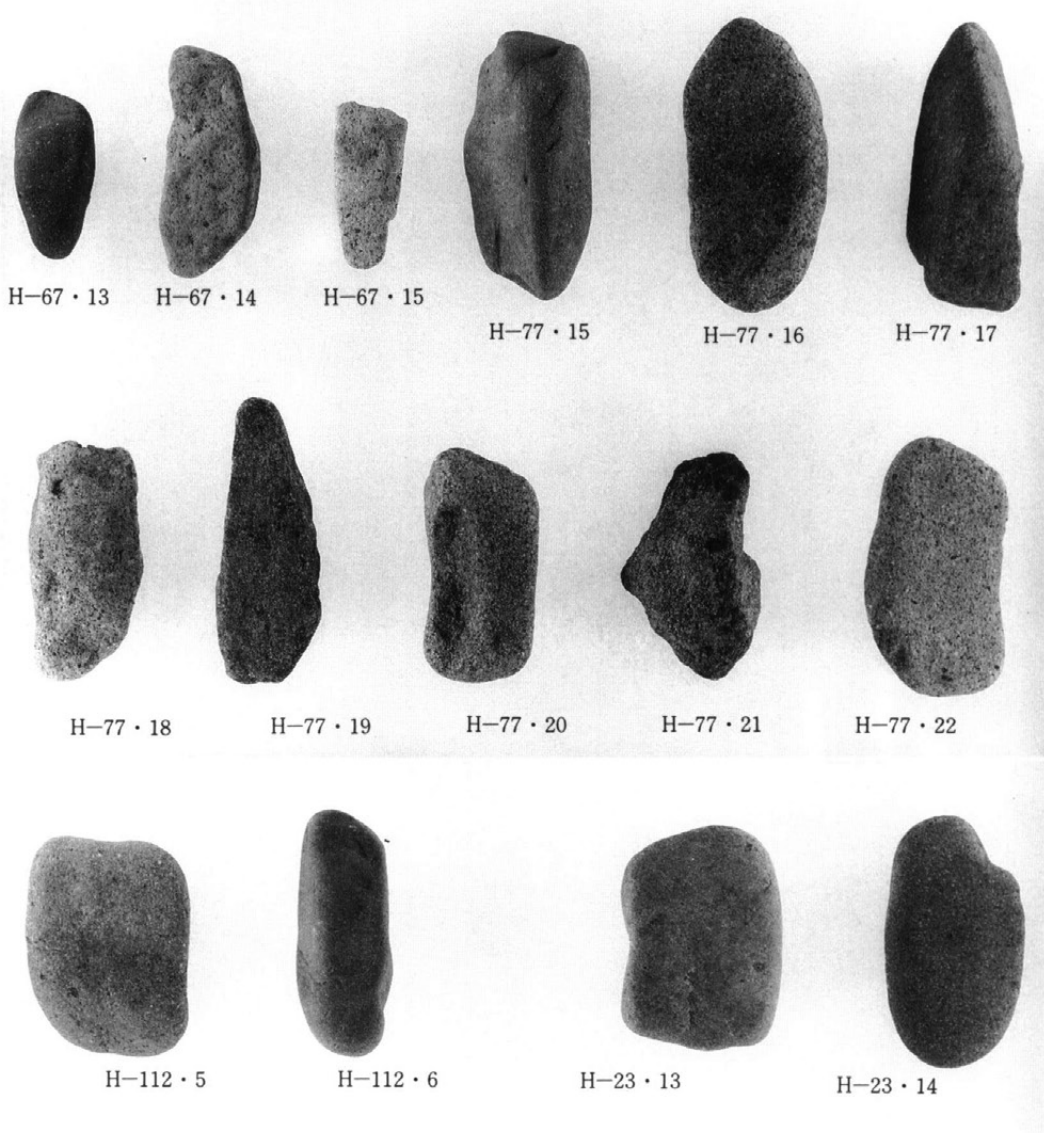


H-94 · 3

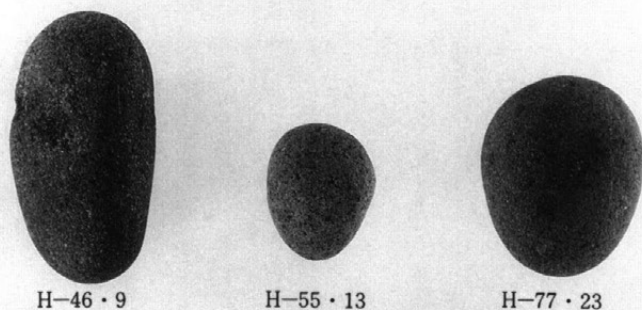


H-117 · 7

敲石 (1 : 4)



石錘 (1 : 4)



磨石 (1 : 4)





H-20・11



H-29・7



H-83・6



H-23・12



H-46・8



H-58・3



H-59・3



H-59・4



H-73・74・2



H-84・20

砥石 (1 : 4)



H-21・7

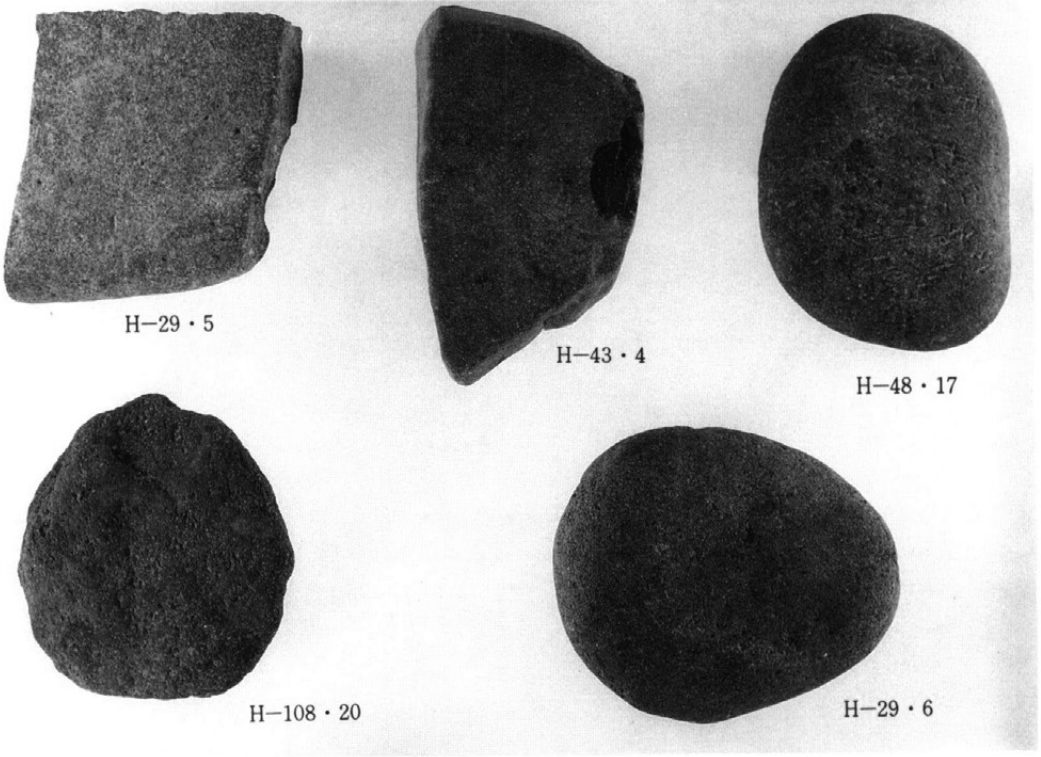


H-24・9



H-28・7

台石 (1 : 4)



H-29・5

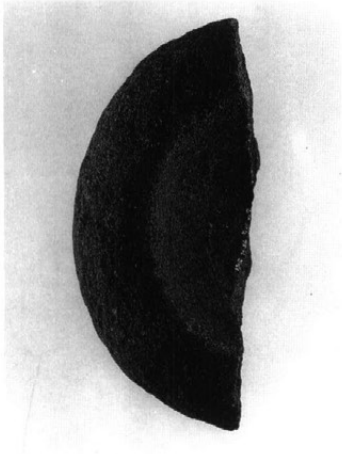
H-43・4

H-48・17

H-108・20

H-29・6

台石 (1 : 4)



H-26・15

石鉢 (1 : 4)

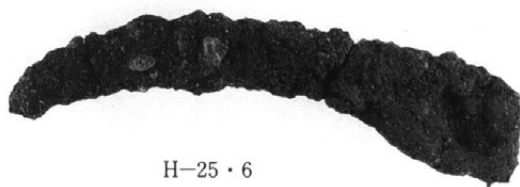


表採・9

石臼 (1 : 4)



H-16・8



H-25・6



H-20・10



H-41・13



H-108・19



H-48・15



H-41・14



H-76・4



遺物整理作業（註記）



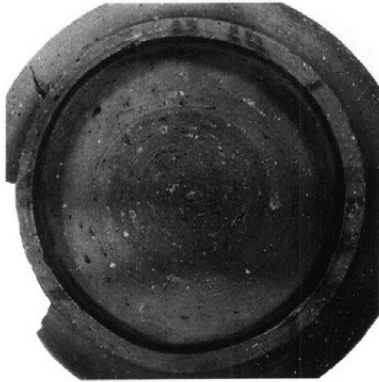
遺物整理作業（復元）



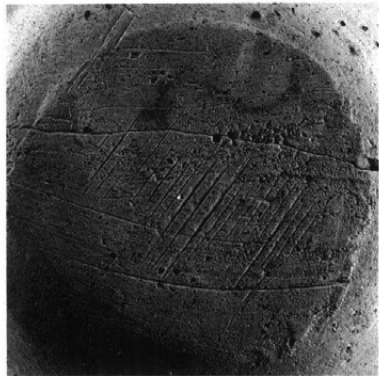
1 回転へら切り  
(須恵器 坏 H-23・2)



2 回転糸切り  
(須恵器 坏 H-33・3)



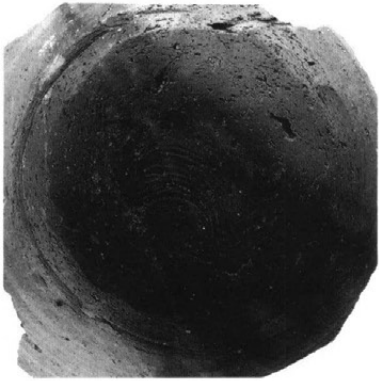
3 回転へらケズリ (全面)  
(須恵器 高台付 坏 H-117・4)



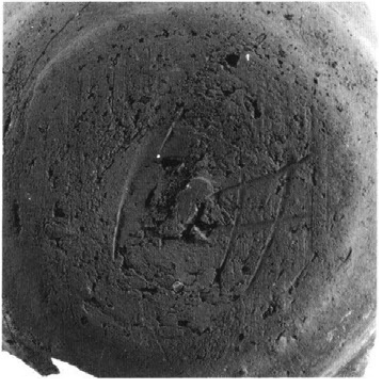
4 手持ちへらケズリ (全面)  
(須恵器 坏 H-113・1)



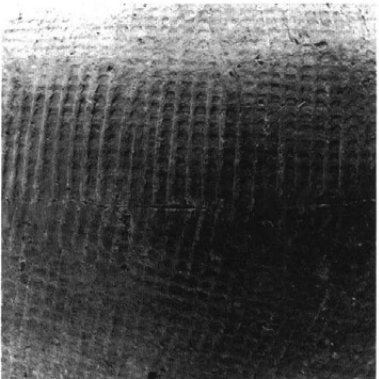
5 手持ちへらケズリ（全面）  
（須恵器坏 H-42・2）



6 回転糸切り＋周囲手持ちへらケズリ  
（須恵器坏 F-48・1）



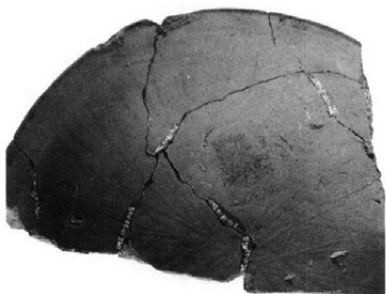
6 へら記号「#」  
（須恵器甕 H-104）



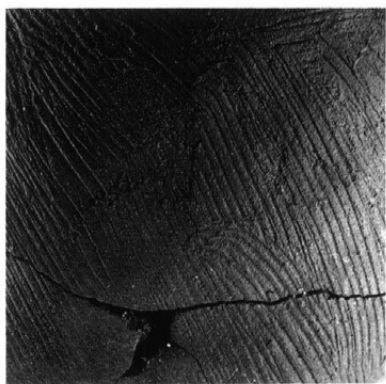
7 叩き目  
（須恵器甕 H-104）



8 畿内系暗文  
(土師器坏 H-6・3)



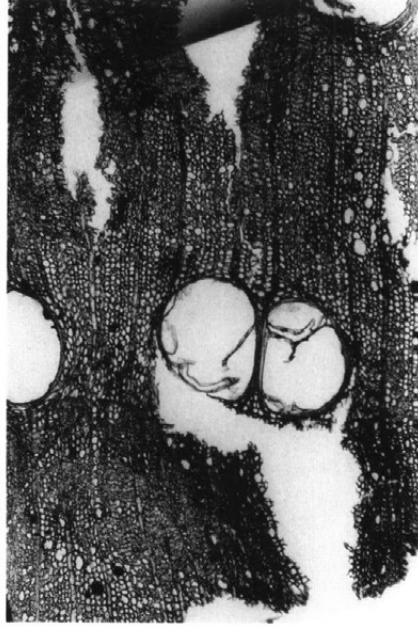
9 放射状暗文  
(土師器坏 H-60・8)



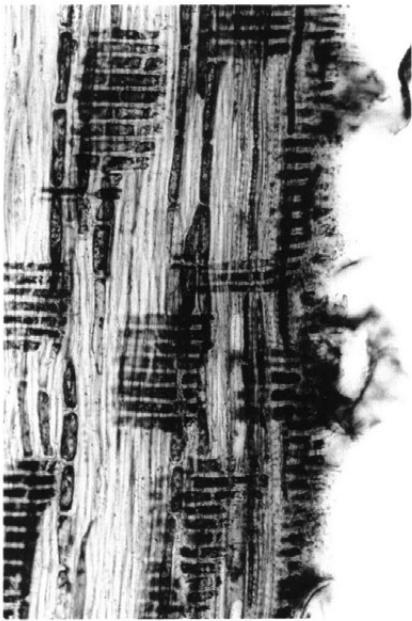
10 刷毛目状調整  
(土師器甕 H-61・18)



11 高坏 坏・脚接合部のホゾ  
(土師器高坏 H-77・7)



木口 ×40



柁目 ×100



板目 ×100

クリ材 (*Castanea crenata*)

## 後 記

二十町歩にも及ぶ前田の田圃には、本報告書作成に本格的に着手した昭和61年9月にはすでに黄金色の稲穂が光っていた。聞くところによればまずまずの収穫量であったという。生産性の向上を目指した圃場整備事業の目的の達成にひとまず第一歩を踏み出したというところであろう。

しかし一方では、前田遺跡というかけがえのない文化遺産が地上から失われてしまった。その代償として残されたのが手もとにある厚さ10cmにも満たないこの報告書である。思えば本調査に際し、何万㎡にも及ぶ遺跡を僅か半年程で調査しなければならないと知らされた折には、途方に暮れたものであった。

調査は、集落全体の検出を第一の目的として行った。きびしい期間のなかではあったが集落の90%以上を調査・検出することができた。文字通り、テント一張が我々の拠点となり、調査員を始め協力者一丸となって調査に携わっていただいた。こうした多くの方々を泣かせていただくことなしには本調査は成し得なかったものと思う。私にしてみてもこの2年間は前田遺跡のことで夜も日も暮れない日々であった。

そしてようやく本書の刊行にこぎつけた。

よりよい暮らしを求めるための開発が優先されるのはいたしかたないことであろう。しかし一方では、木が切られ、野山が削られ、小川には無機質なU字溝がふせられその水も飲めなくなってしまう。幼い頃ドジョウを採ったりして遊んだあの風景をこれからの子供たちは知らなくなるのだろうか。そして我々の心のふるさとがなくなるさみしさを感じるのは私だけであろうか。

祖先が残してくれた貴重な文化遺産を失なって辛いのは、研究者ではなくなにより地域住民に他なるまい。

本書が私たちの地域史再構成のささやかな一助となることを祈念して筆をおこう。

発掘調査担当 堤 隆

---

---

### 鑄師屋遺跡群 前 田 遺 跡

— 発掘調査報告書 —

昭和62年3月31日発行

編 集 御代田町教育委員会  
発 行 御代田町教育委員会  
印 刷 ほおずき書籍株式会社

---

---



