



5

5 SB9007-15

6 SB9007-10



6



1

1 ST5101-4



2

2 ST5101-5



3

3 ST5101-6



4

4 ST5102-1



5

5 ST5102-10

6 ST5105-1



6

- 1 ST5103-1
- 2 ST5103-4
- 3 ST5111-1
- 4 ST5109-3
- 5 ST5109-4
- 6 ST5115-1
- 7 ST5110-1
- 8 ST5114-1





1



2



3



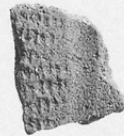
4



5



6



7



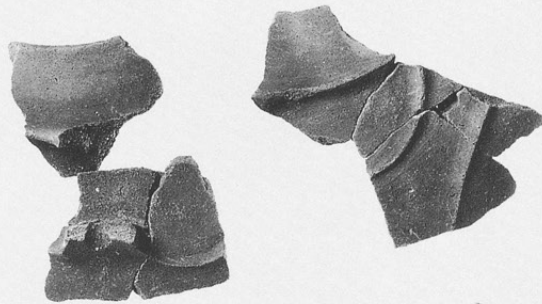
8



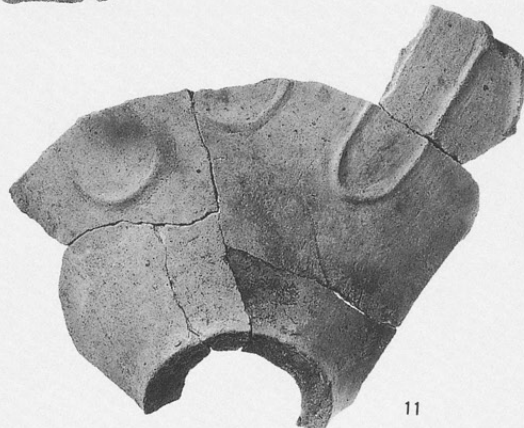
9



10



12

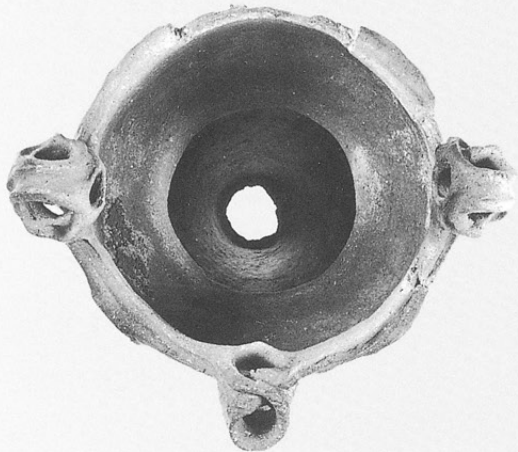
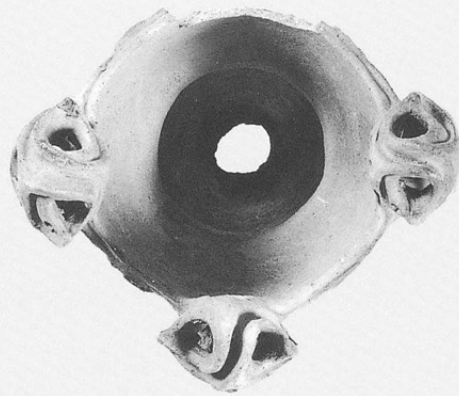
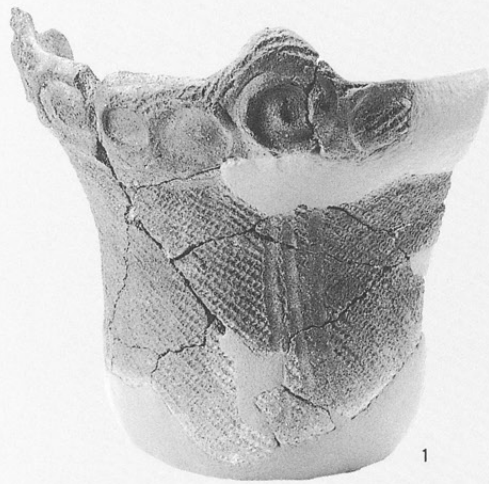


11

- 1 SK4461-2
- 2 SK5531-1
- 3 SK5536-1
- 4 SK5576-4
- 5 SK5580-1
- 6 SK5584-1
- 7 SK5584-2
- 8 SK5590-2
- 9 SK5629-2
- 10 SK5629-3
- 11 SK5568-1
- 12 SK5773-1

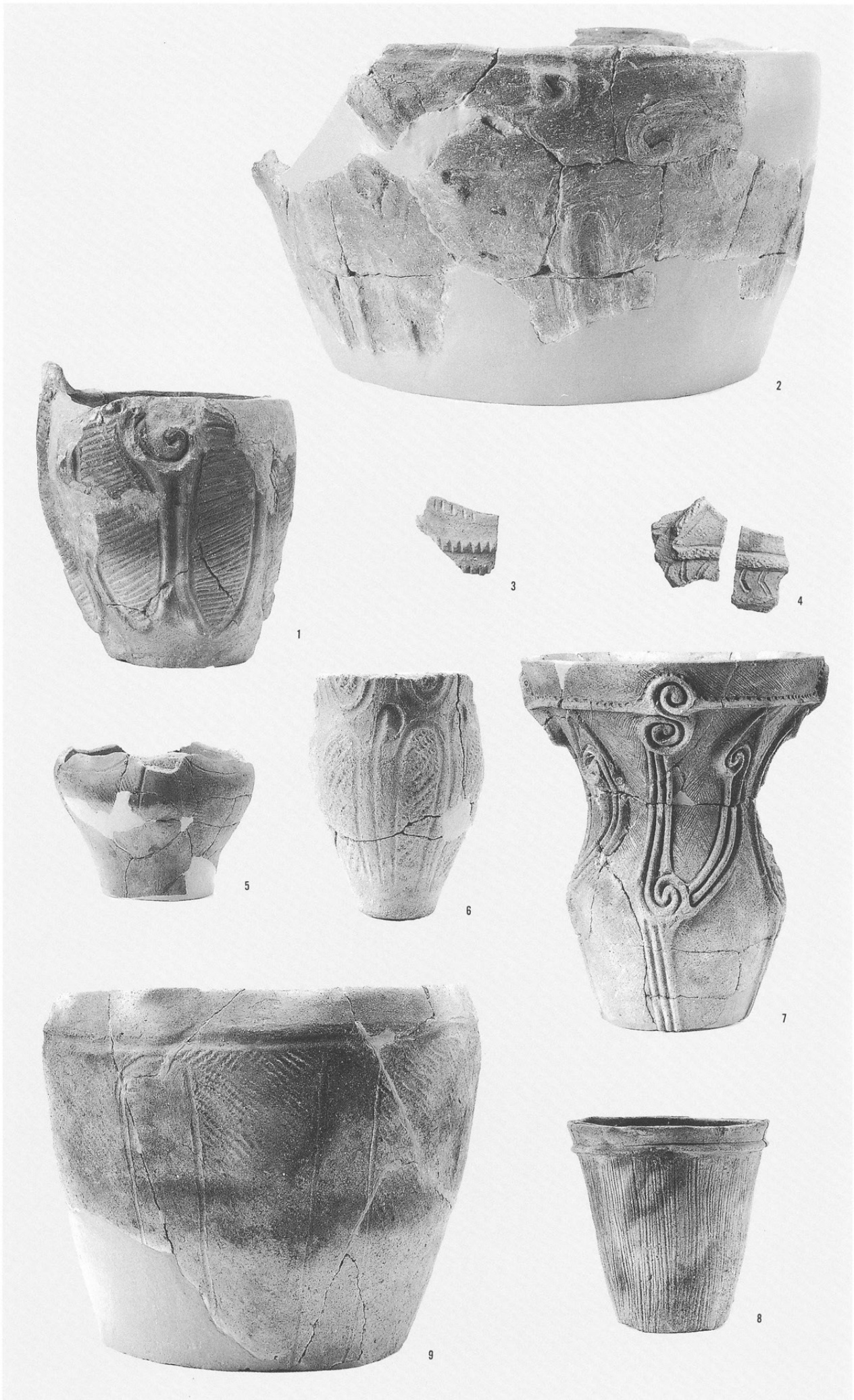
- 1 SK5695-2
- 2 SK5778-1
- 3 SK5790-1
- 4 SK5823-1
- 5 SK9003-3
- 6 SK9003-4
- 7 SK9003-11
- 8 SK9003-12
- 9 SK9017-3
- 10 SK9022-1
- 11 SK9039-1
- 12 SK9068-3





- 1 SK9070-3
- 2 SK9071-1
- 3 SK9071-2
- 4 SK9071-4
- 5A・5B SK9071-7

- 1 SK9071-12
- 2 SK9071-16
- 3 SF5147-7
- 4 SF5176-3
- 5 SQ4701-1
- 6 SQ4702-1
- 7 SQ4803a-1
- 8 SQ4803b-1
- 9 SQ4804-1



1A・1B SQ5502d-1

2 SQ5506a-3

3 SQ5507a-1

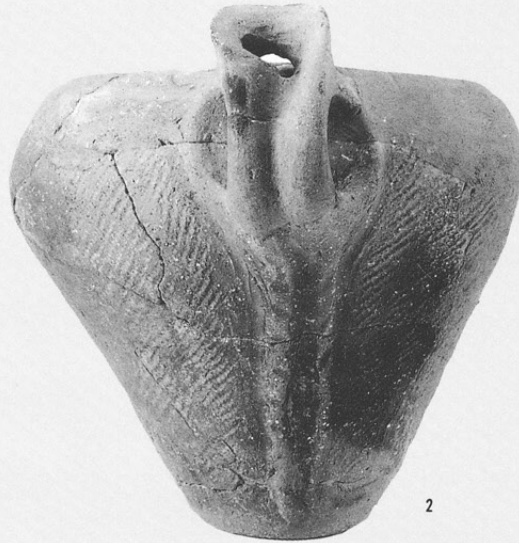
4 SQ5529-1



1A



1B



2



3



4

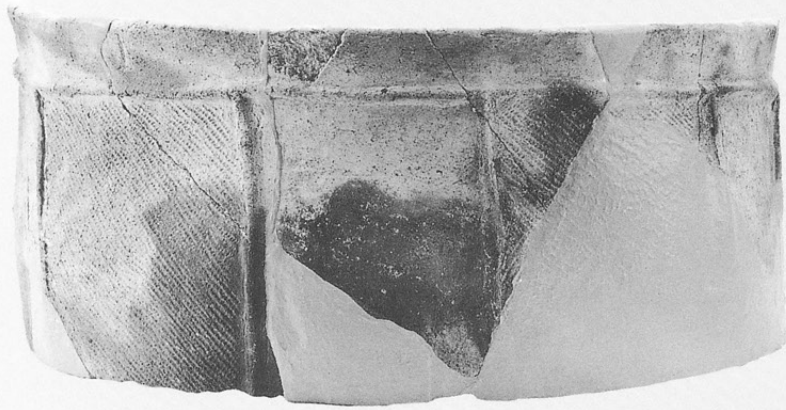
- 1 SQ5534a-1
- 2 SQ5532-1
- 3 SQ5531-1



1

2

3



1



2



3

- 1 SQ5537-11
- 2 SQ5337-14
- 3 SQ5337-21

- 1 SQ5542-1
- 2 SQ5542-2
- 3 SQ5549-1
- 4 SQ5551-1
- 5 SQ5553-1
- 6 SQ7001-2





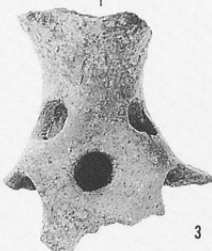
1



2



3



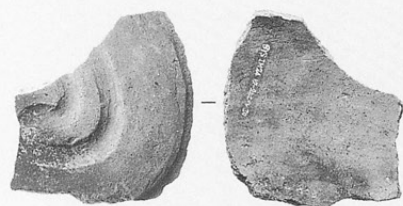
4



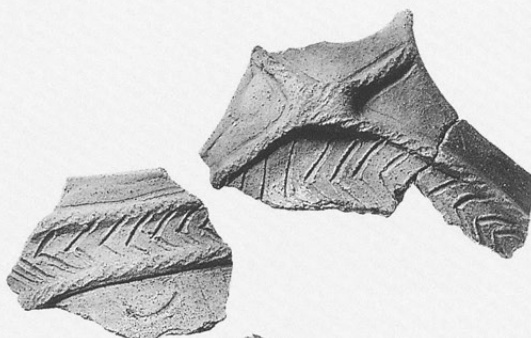
5



6



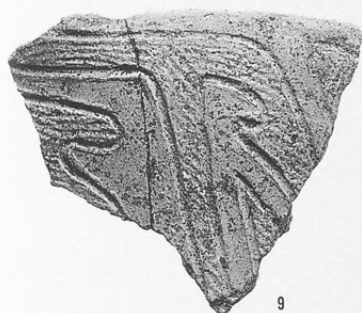
7



8



9



10



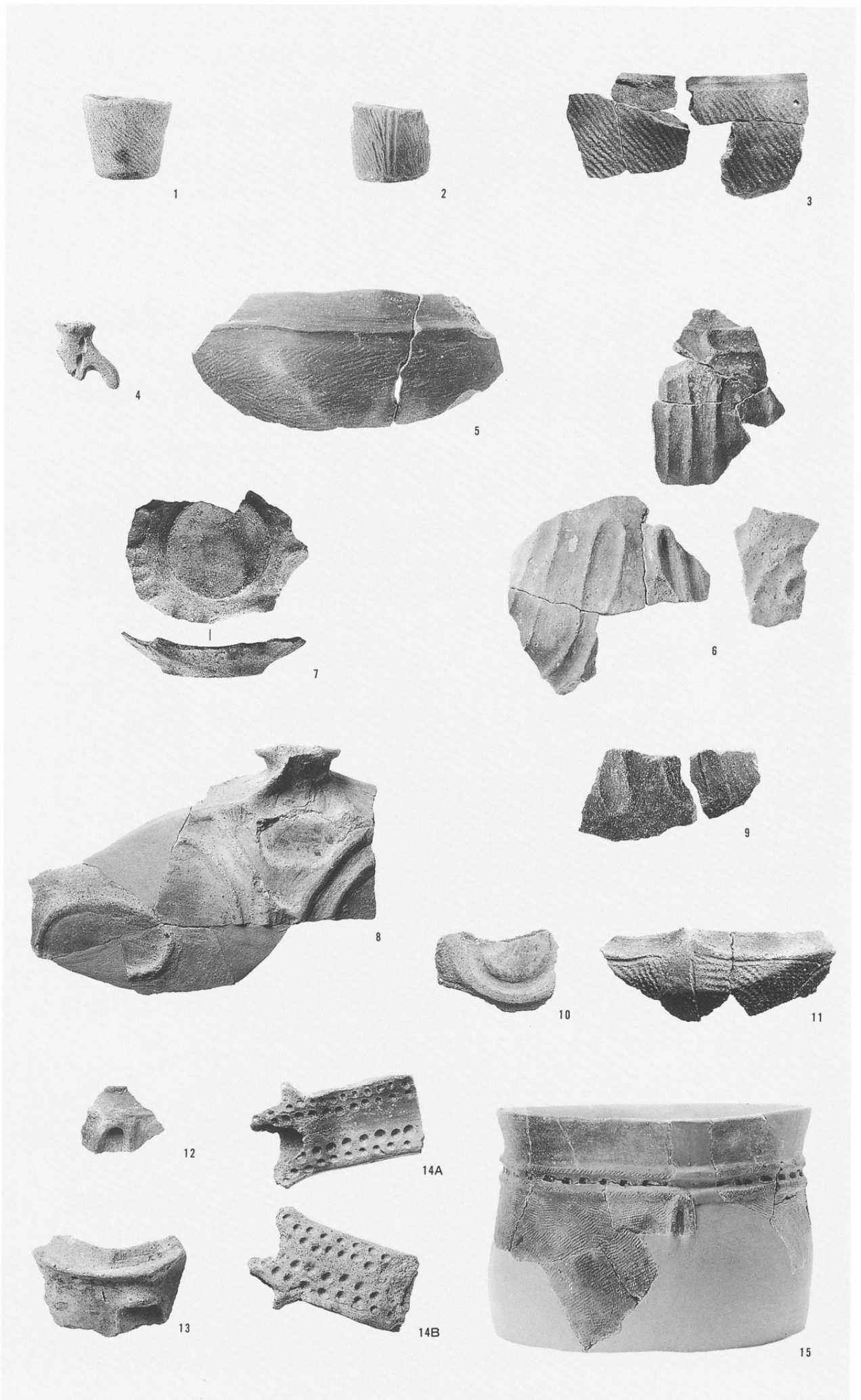
11



12

- 1 SQ7002-1
- 2 SX5502-1
- 3 SX5502-2
- 4 SX5502-3
- 5 ④g区W-2
- 6 ⑤a区M-1
- 7 ⑤a区M-2-2
- 8 ⑤a区M-3
- 9 ⑤a区R-1
- 10 ⑤b区N-2
- 11 ⑤b区N-3

- 1 ⑤b区N-5
- 2 ⑤b区N-7
- 3 ⑤b区N-8
- 4 ⑤b区N-10
- 5 ⑤b区N-13
- 6 ⑤b区N-17
- 7 ⑤b区O-1
- 8 ⑤b区O-2
- 9 ⑤b区S-2
- 10 ⑤b区S-5
- 11 ⑤b区S-6
- 12 ⑤b区S-9
- 13 ⑤b区S-10
- 14A・14B ⑤b区S-11
- 15 ⑤b区S-13



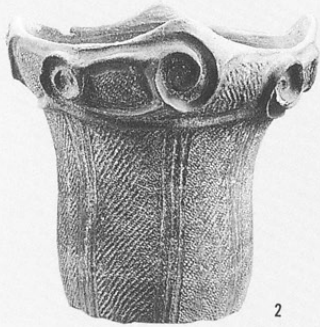
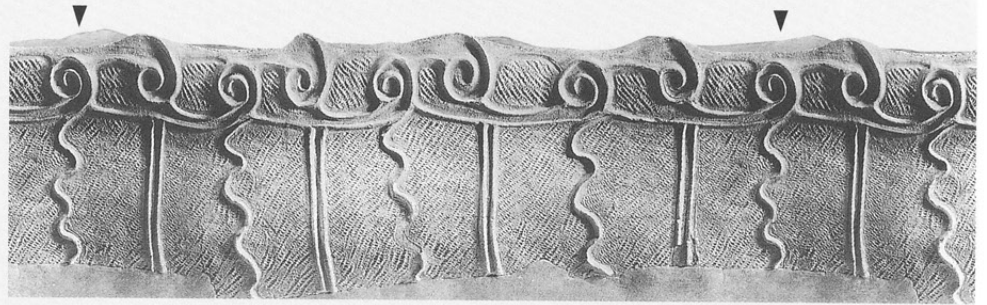


- 1 ⑤b区S-14
- 2 ⑤b区S-16
- 3 ⑤b区S-17
- 4 ⑥b区I-1
- 5 ⑥b区I-2
- 6 ⑥b区J-1
- 7 ⑥b区N-1
- 8 ⑥b区N-2
- 9 ⑥b区N-4
- 10 ⑥b区S-1
- 11 ⑥b区S-2
- 12 ⑤a区東壁-1



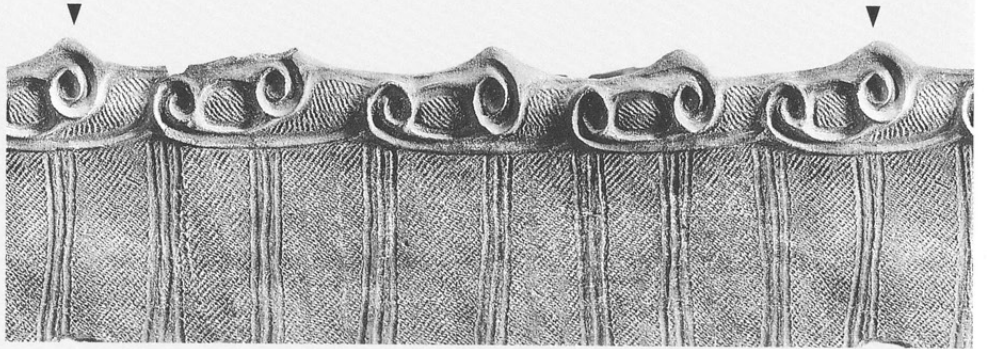
1

SB5341-2



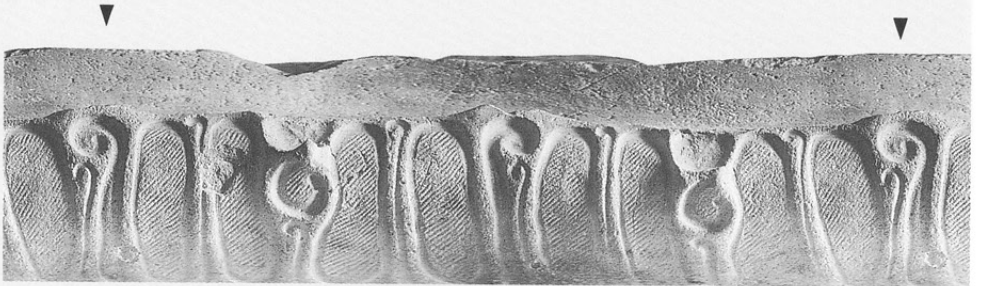
2

SB5352-1



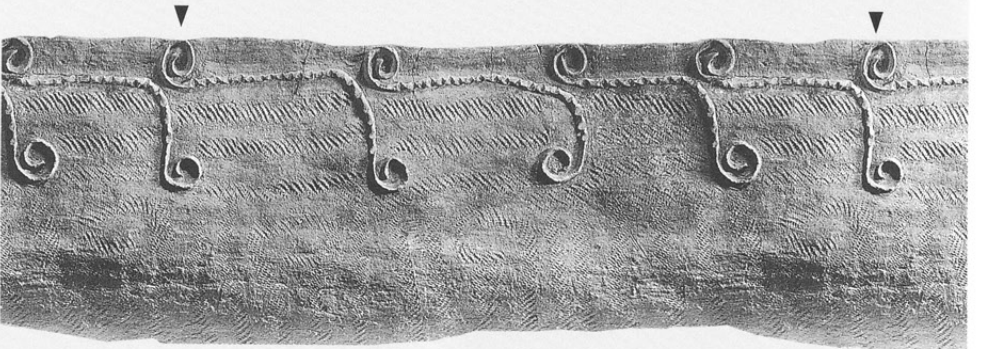
3

SB5353-1



4

SB5350-6



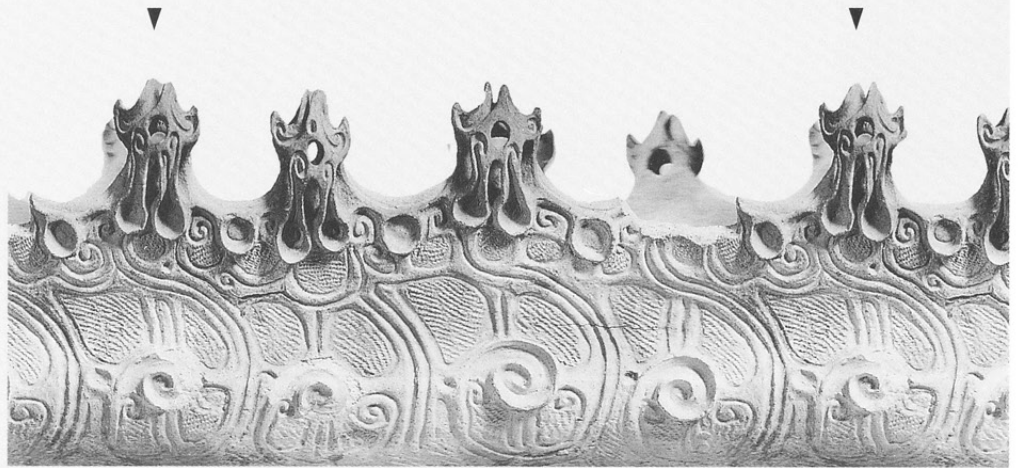
5

SB5332-7





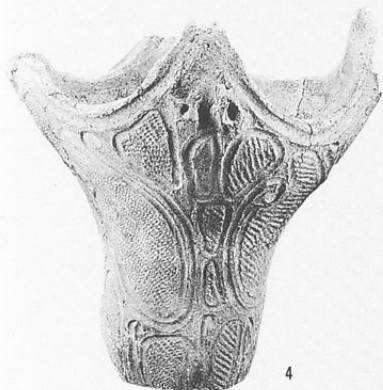
SK9071-1



SB5350-9



SB5351-2

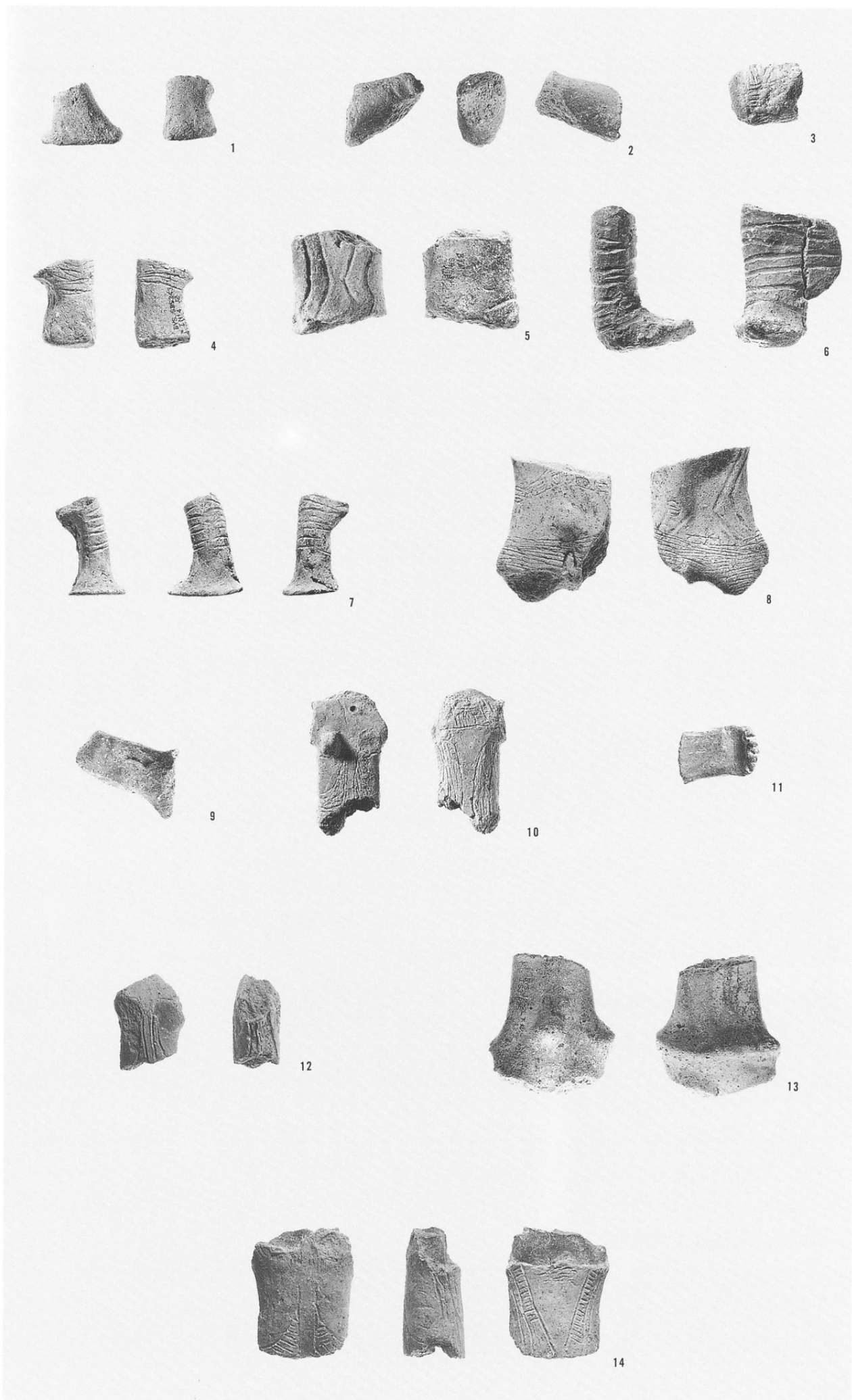


ST5109-4



土偶

- 1 SB5321-1
 - 2 SB5332-2
 - 3 SB5338-3
 - 4 SB5343-4
 - 5 SB5345-5
 - 6 SB5345-6
 - 7 SB5345-7
 - 8 SB5345-8
 - 9 SB9005-9
 - 10 SK5576-10
 - 11 SK9076-11
 - 12 ⑤ b IN24-12
 - 13 ⑤ b IS 3 P25-13
 - 14 ⑤ b 外周トレンチ
- 14

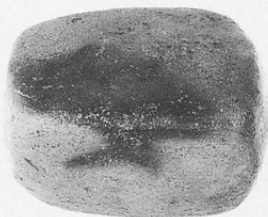


土製品

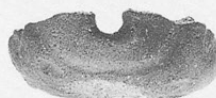
- 1 SB5324-1
- 2 SB5321-2
- 3 ㊦ b IN 5-3
- 4 ㊥ b IO11-4
- 5 SB9003-5
- 6 SB5319-6
- 7 ㊥ b IS18-7
- 8 SD9002-8



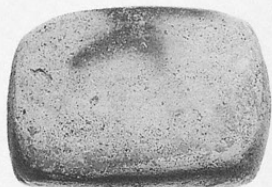
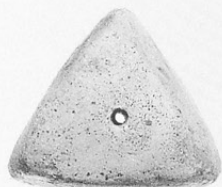
1



2



3



5



4



6



7

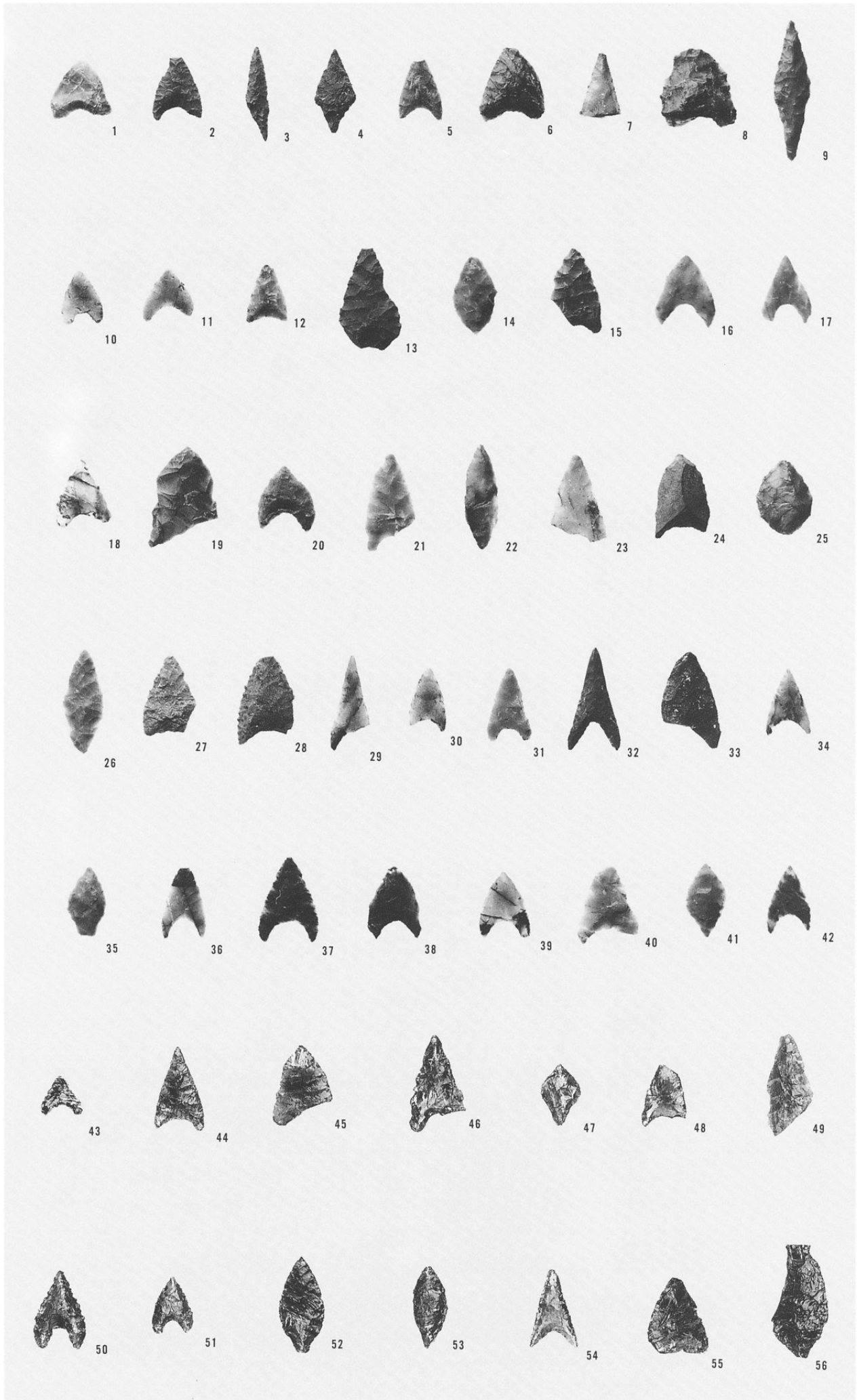


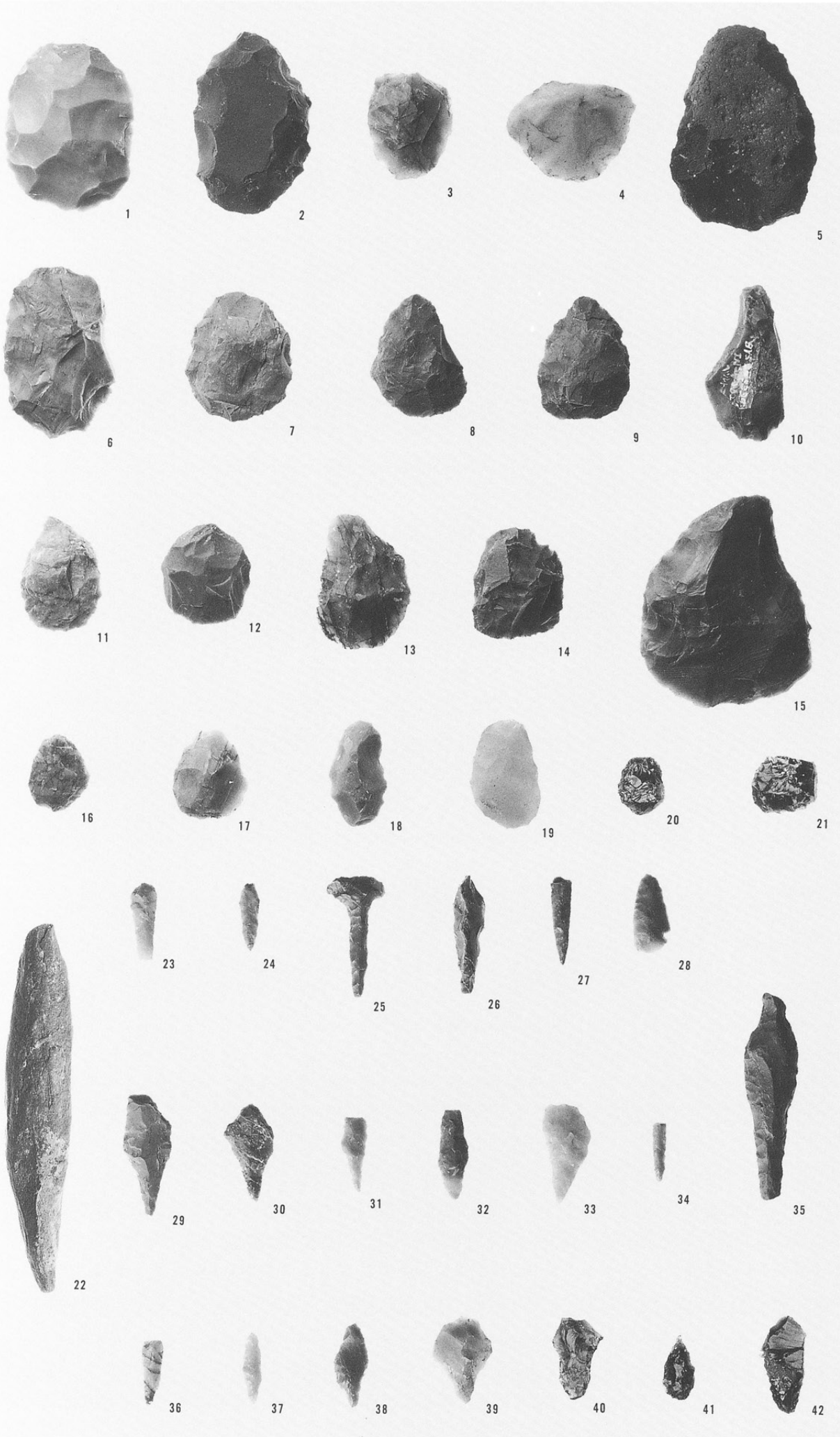
8



屋代遺跡群
Ⅻ-2層 石器

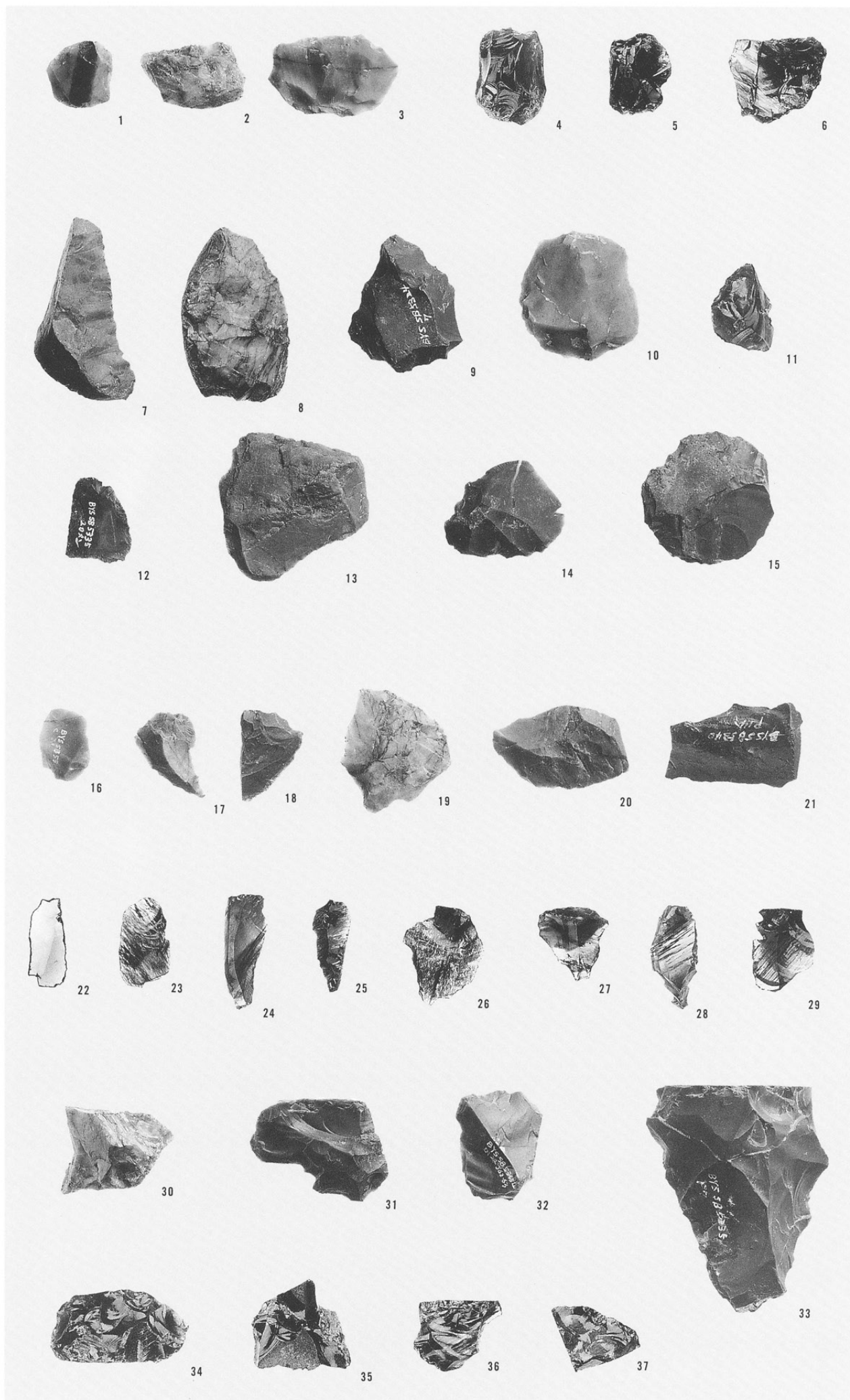
- 1 SB5310-1
- 2 SB5310-3
- 3 SB5310-4
- 4 SB5311-5
- 5 SB5311-6
- 6 SB5319-9
- 7 SB5321-10
- 8 SB5321-11
- 9 SB5312-7
- 10 SB5326-12
- 11 SB5328-15
- 12 SB5328-16
- 13 SB5332-17
- 14 SB5332-18
- 15 SB5334-19
- 16 SB5335-20
- 17 SB5335-21
- 18 SB5335-22
- 19 SB5337-25
- 20 SB5339-28
- 21 SB5339-29
- 22 SB5339-30
- 23 SB5339-31
- 24 SB5340-32
- 25 SB5340-33
- 26 SB5340-34
- 27 SB5340-36
- 28 SB5341-37
- 29 SB5341-38
- 30 SB5345-41
- 31 SB5351-43
- 32 SB5351-44
- 33 SB9003-45
- 34 SB9003-46
- 35 ST5110-47
- 36 ST5124-48
- 37 ST5124-49
- 38 SK5576-50
- 39 SK5629-51
- 40 SK5770-53
- 41 SF5119-55
- 42 SK5513-56
- 43 SB5310-2
- 44 SB5326-14
- 45 SB5321-13
- 46 SB5318-8
- 47 SB5335-23
- 48 SB5335-24
- 49 SB5337-26
- 50 SB5339-27
- 51 SB5340-35
- 52 SB5341-39
- 53 SB5345-40
- 54 SB5346-42
- 55 SK5664-52
- 56 SK5790-54

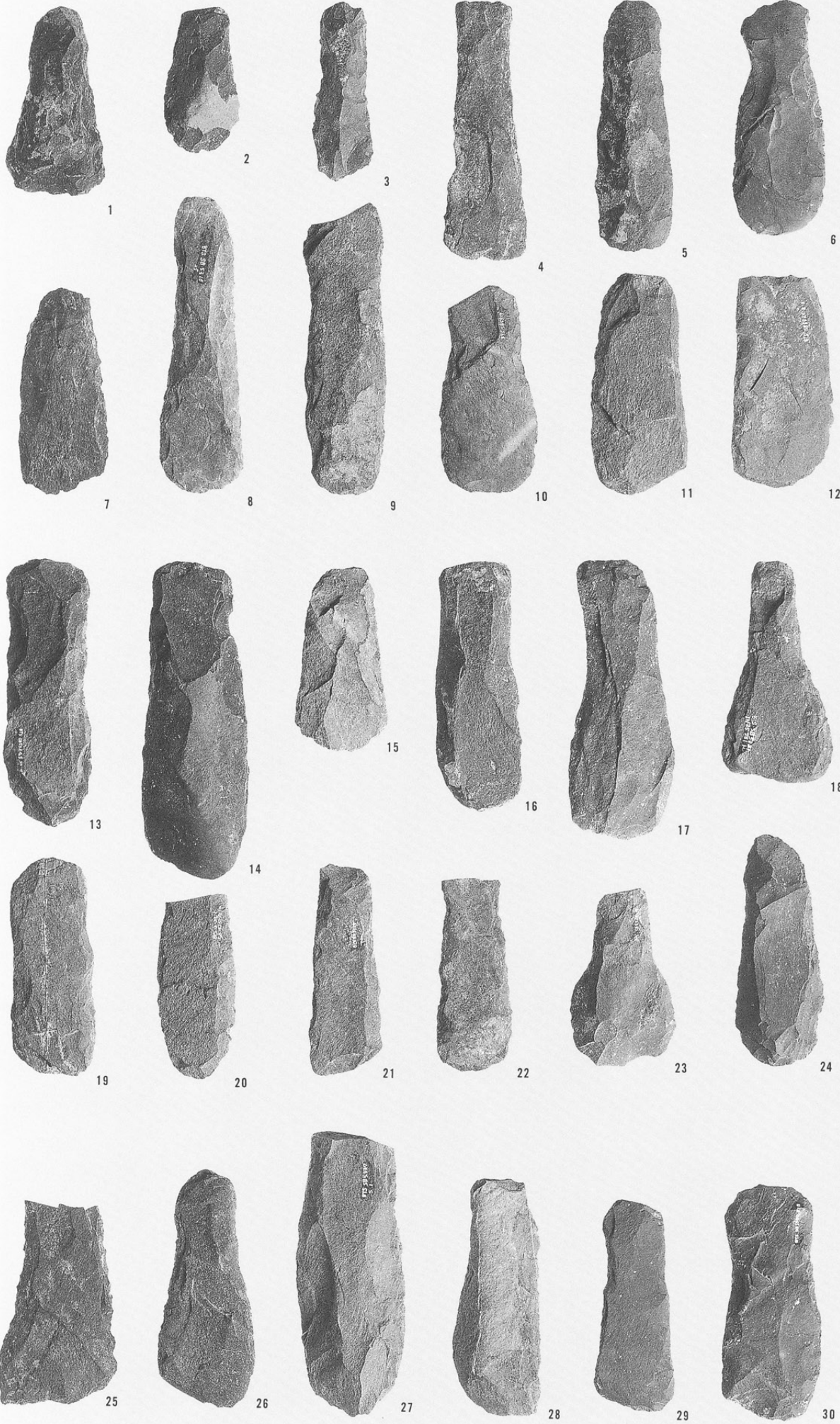




- 1 SB5319-59
- 2 SB5321-63
- 3 SB5324-64
- 4 SB5325-66
- 5 SB5325-67
- 6 SB5325-68
- 7 SB5337-73
- 8 SB5337-74
- 9 SB5339-76
- 10 SB5339-77
- 11 SB5340-79
- 12 SB5340-83
- 13 SB5340-85
- 14 SB5340-86
- 15 SB5340-84
- 16 SB5332-70
- 17 SB5345-88
- 18 SB5346-89
- 19 XII-2 M-20-95
- 20 SB5340-82
- 21 SB5341-87
- 22 SB5313-96
- 23 SB5313-97
- 24 SB5315-98
- 25 SB5319-99
- 26 SB5325-101
- 27 SB5338-103
- 28 SB5339-104
- 29 SB5340-106
- 30 SB5340-107
- 31 SB5340-108
- 32 SB5340-109
- 33 SB5340-110
- 34 SB5343-111
- 35 SQ4801-116
- 36 SB5345-112
- 37 SB5346-113
- 38 SB9001-114
- 39 SB9003-115
- 40 SB5350-100
- 41 SB5335-102
- 42 SB5339-105

- 1 SB5321-118
- 2 SB5339-121
- 3 SB5345-125
- 4 SB5332-119
- 5 SB5340-123
- 6 SB5346-126
- 7 SB5316-127
- 8 SB5321-128
- 9 SB5324-129
- 10 SB5325-130
- 11 SB5335-132
- 12 SB5335-131
- 13 SB5340-134
- 14 SB5343-135
- 15 SB5340-133
- 16 SB5312-256
- 17 SB5328-262
- 18 SB5332-267
- 19 SB5335-270
- 20 SB5338-278
- 21 SB5340-279
- 22 SB5313-258
- 23 SB5350-260
- 24 SB5332-268
- 25 SB5335-271
- 26 SB5340-282
- 27 SB5341-284
- 28 SB9001-287
- 29 SB9003-289
- 30 SB5316
- 31 SB5319
- 32 SB5345
- 33 SB5336-296
- 34 SB5324-294
- 35 SB5345-298
- 36 SB5346-300
- 37 SB9003-301

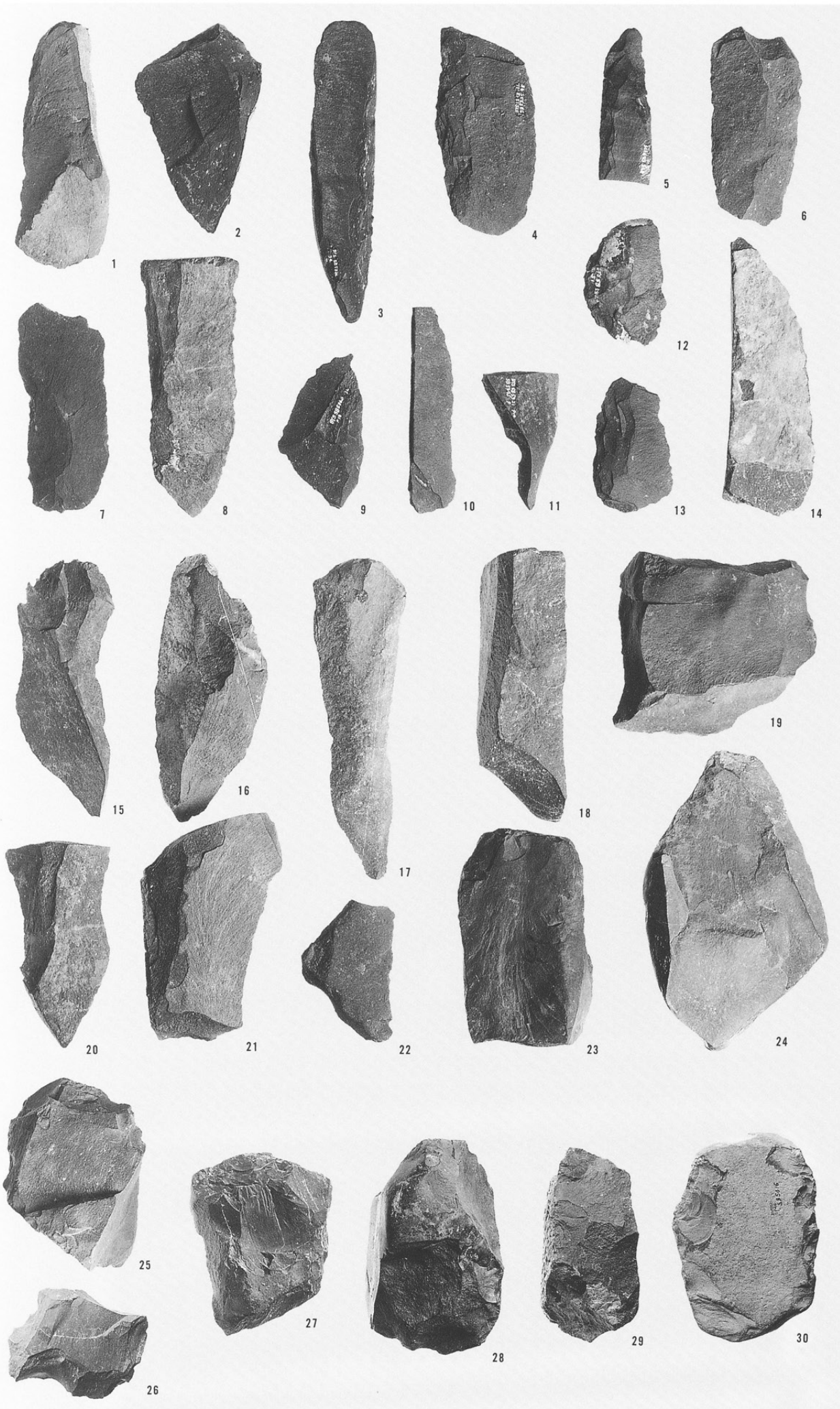




- 1 SB5311-136
- 2 SB5312-140
- 3 SB5312-141
- 4 SB5312-142
- 5 SB5313-143
- 6 SB5316-144
- 7 SB5316-147
- 8 SB5316-145
- 9 SB5319-148
- 10 SB5319-149
- 11 SB5324-150
- 12 SB5324-154
- 13 SB5324-152
- 14 SB5324-153
- 15 SB5324-155
- 16 SB5324-157
- 17 SB5324-158
- 18 SB5324-159
- 19 SB5325-162
- 20 SB5325-163
- 21 SB5325-165
- 22 SB5325-164
- 23 SB5328-166
- 24 SB5328-167
- 25 SB5335-168
- 26 SB5337-170
- 27 SB5337-172
- 28 SB5337-173
- 29 SB5337-174
- 30 SB5337-175

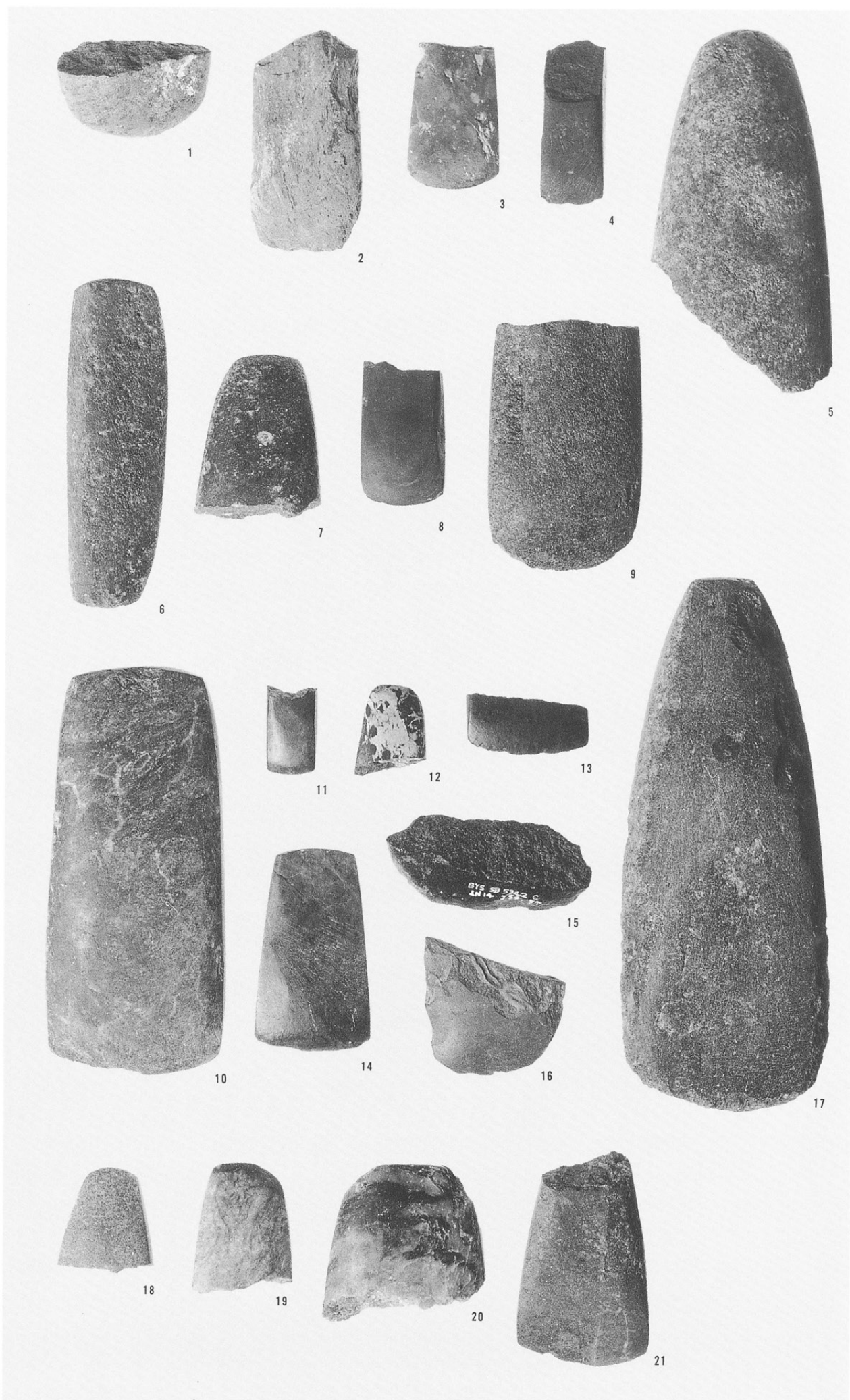
- 1 SB5338-177
- 2 SB5340-178
- 3 SB5340-180
- 4 SB5340-181
- 5 SB5341-182
- 6 SB5343-183
- 7 SB5343-185
- 8 SB5343-186
- 9 SB5345-189
- 10 SB5343-188
- 11 SB5345-191
- 12 SB5345-190
- 13 SB5345-193
- 14 SB5345-195
- 15 SB5348-198
- 16 SB5351-197
- 17 SB5351-196
- 18 SK9003-199
- 19 SB5324-201
- 20 SB5311-200
- 21 SB5324-202
- 22 SB5311-209
- 23 SB5311-210
- 24 SB5316-211
- 25 SB5325-203
- 26 SB5316-213
- 27 SB5343-208
- 28 SB5337-205
- 29 SB5325-204
- 30 SB5316-212
- 31 SB5324-215
- 32 SB5324-214





- 1 SB5324-217
- 2 SB5324-219
- 3 SB5324-220
- 4 SB5325-221
- 5 SB5335-222
- 6 SB5337-225
- 7 SB5337-226
- 8 SB5340-229
- 9 SB5340-227
- 10 SB5343-234
- 11 SB5345-237
- 12 SB5340-231
- 13 SB5343-235
- 14 SB5351-239
- 15 SB5312-240
- 16 SB5324-241
- 17 SB5337-245
- 18 SB5335-304
- 19 SK9017-313
- 20 SB5340-246
- 21 SB5345-253
- 22 SB5345-251
- 23 SB5316-307
- 24 SB5336-309
- 25 SB5324-305
- 26 SB5327-311
- 27 SB5338-306
- 28 SB5337-308
- 29 SB5338-310
- 30 SB5316-315

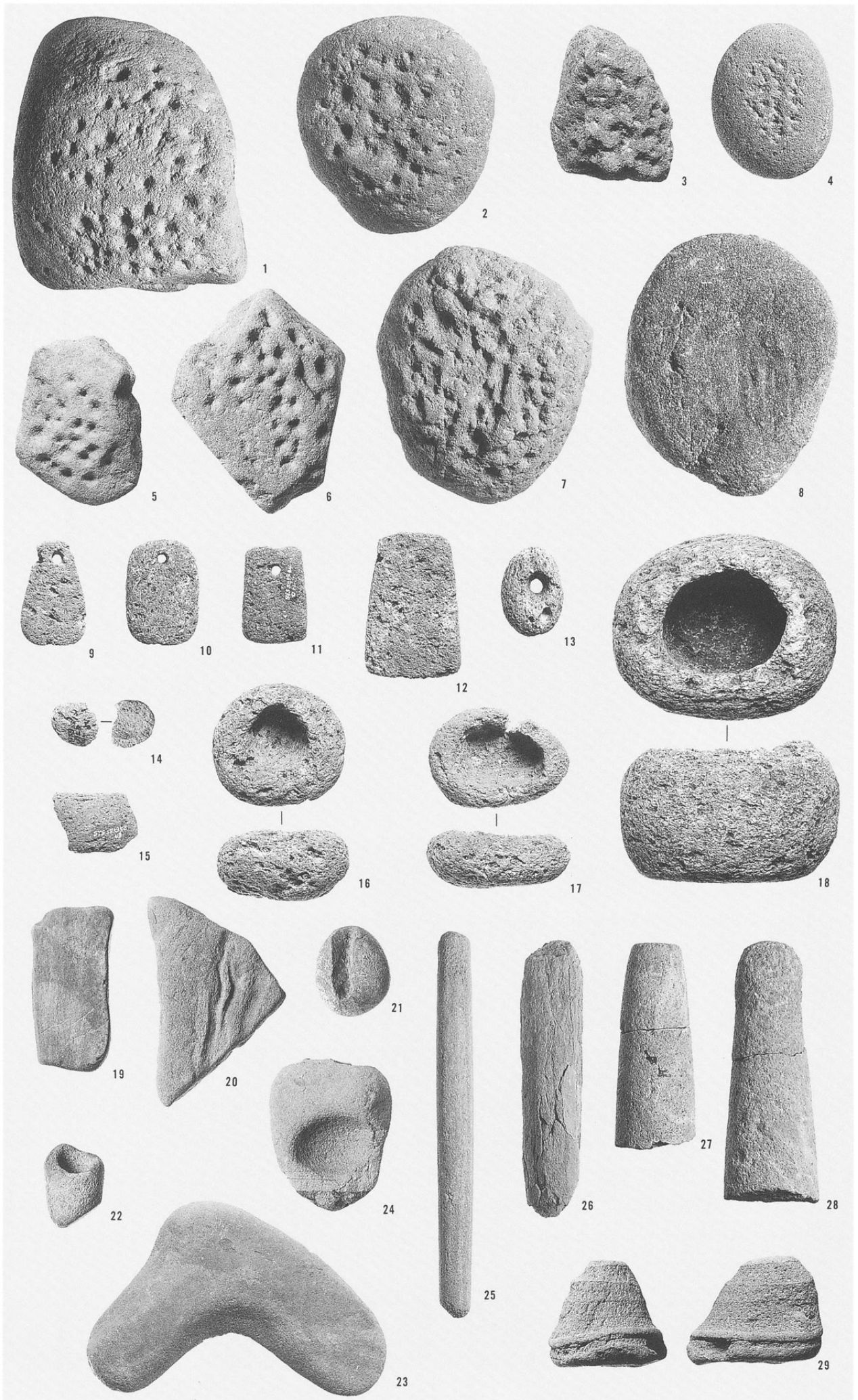
- 1 SB5311-329
- 2 SB5312-316
- 3 SB5316-319
- 4 SB5316-317
- 5 SB5316-328
- 6 SB5319-332
- 7 SB5319-318
- 8 SB5321-320
- 9 SB5321-323
- 10 SB5335-331
- 11 SB5340-321
- 12 SB5340-322
- 13 SB5340-326
- 14 SB9002-324
- 15 SB5342-330
- 16 SB9007-325
- 17 SB5324-327
- 18 SB5323-334
- 19 SK9032-335
- 20 SK9038-333
- 21 SF5140-336
(ST5110内)





- 1 SB5310-339
- 2 SB5316-340
- 3 SB5338-342
- 4 SB5340-343
- 5 SB5341-348
- 6 SB5340-347
- 7 SB5343-345
- 8 SB5345-346
- 9 SB9001-351
- 10 SB5313-349
- 11 SB5340-353
- 12 SB9007-354
- 13 SB5316-356
- 14 SB5316-357
- 15 SB5321-360
- 16 SB5321-361
- 17 SB5324-363
- 18 SB5337-364
- 19 SB5340-365
- 20 SH5101-370
- 21 SK9071-368
- 22 SB5316-372
- 23 SB5337-371
- 24 SB5338-374
- 25 SB5316-373
- 26 SB5350-377
- 27 SB5324-376
- 28 SB5313-381
- 29 SB5316-382
- 30 SB5316-383
- 31 SB5316-385
- 32 SB5316-386
- 33 SB5316-387
- 34 SB5332-388

- 1 SB5319-394
- 2 SB5324-395
- 3 SB5337-399
- 4 SB5342-401
- 5 SB5324-397
- 6 SB5324-396
- 7 SB5337-400
- 8 M-10-402
- 9 SB5311-404
- 10 SB5325-409
- 11 SB5344-411
- 12 SB5328-408
- 13 SB5328-412
- 14 SB5310-413
- 15 SB5338-414
- 16 SB5343-415
- 17 N-13-416
- 18 SH5101-417
- 19 SB5317-419
- 20 SB5336-420
- 21 SB5316-421
- 22 SK5552-423
- 23 SB5336-424
- 24 SB9001-422
- 25 SB5324-426
- 26 SB5324-427
- 27 SB5324-428
- 28 SB5324-429
- 29 SB5319-430





1



2



3



4

- 1 SB5316-431
- 2 SB5324-432
- 3 SB5324-433
- 4 N-15-434
- 5 SB5343-435
- 6 SB5312-437
- 7 SB5316-438
- 8 SB5316-439
- 9 SB5328-440
- 10 SB9001-441
- 11 SB9007-442
- 12 S-4 P22-443
- 13 SK5812-444
- 14 SB5325-445
- 15 SB5335-448
- 16 SB5335-451
- 17 SB5340-453
- 18 SK5741-452
- 19 SK5576-447
- 20 SK5574-446
- 21 S-13 P61-450
- 22 S-17-449
- 1 N-13 (骨器)
- 2 SB5311 (角器)



5



6



7



8



9



10



11



12



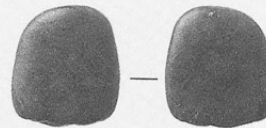
13



14



15



16



17



18



19



20



21



22



1



2

ただし2 (角器)は2倍

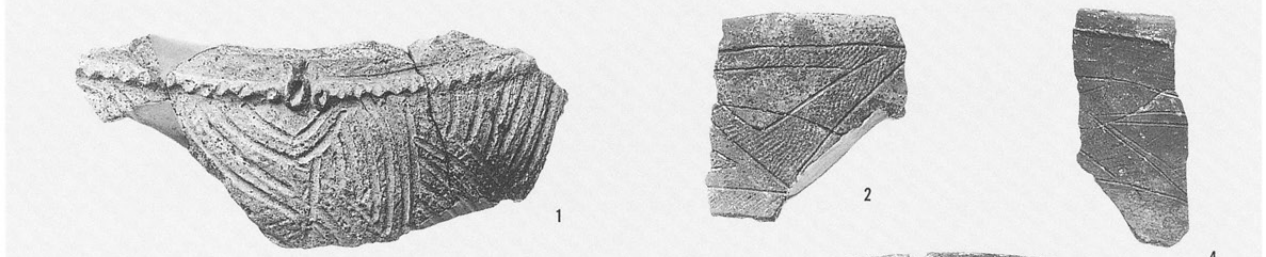
後期前葉の土器
XII - 1層

- 1 SF7005-2
- 2 SF7005-4
- 3 SF7005-5
- 4 SF7005-6
- 5 SF7005-8
- 6 包含層-13
- 7 包含層-11
- 8 包含層-12
- 9 他時期混入-18



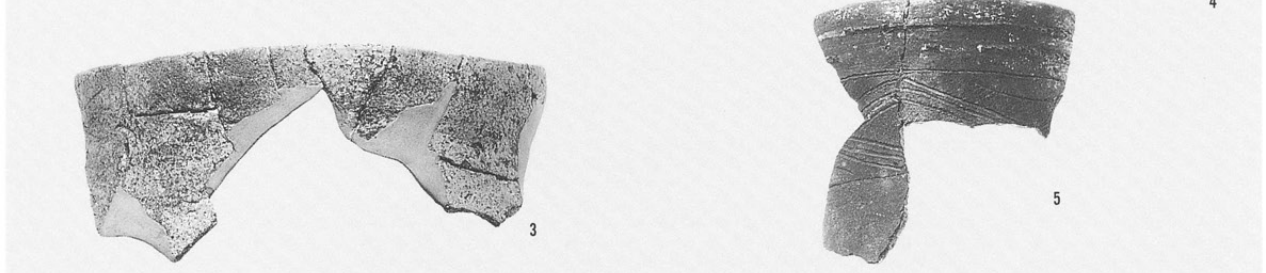
X層

- 1 SQ1008-1
- 2 SQ1009-2
- 3 SQ1009-4
- 4 包含層-30
- 5 包含層-31



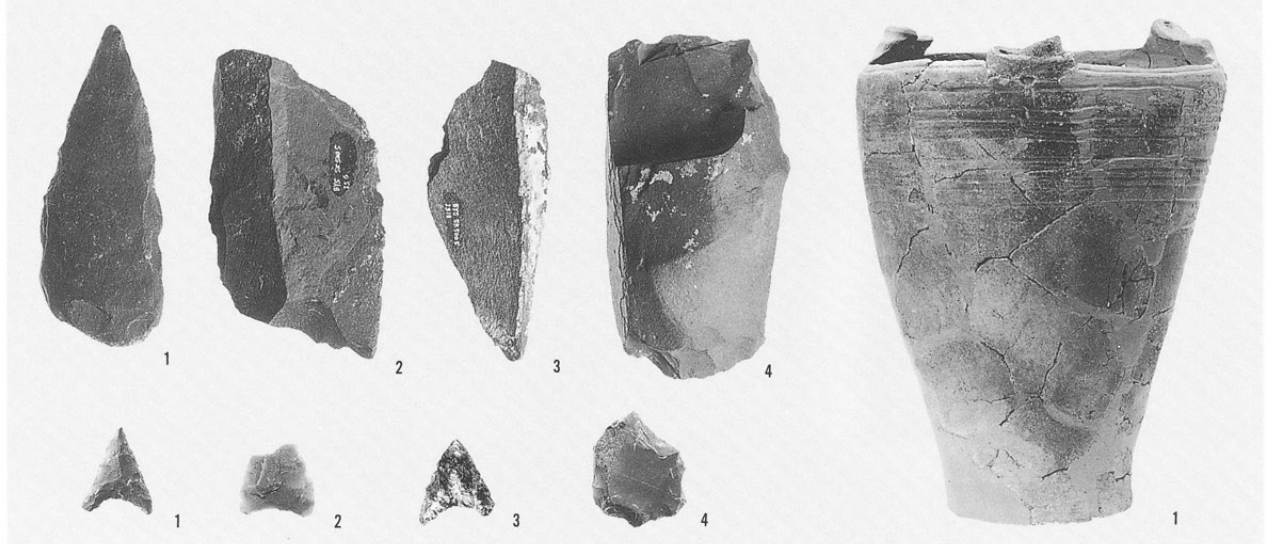
後期前葉の石器
XII - 1層

- 1 SK5005-1
- 2 SK5005-2
- 3 SK5005-3
- 4 包含層-5



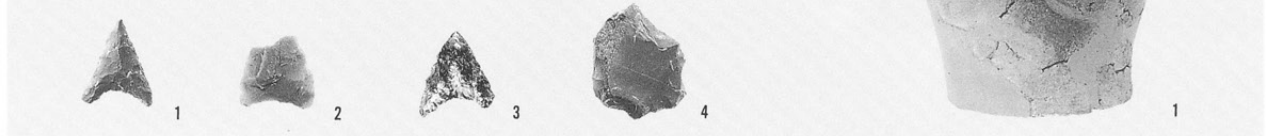
X層

- 1 SF1021-7
- 2 SF1021-8
- 3 SQ1009-9
- 4 SF1021-10



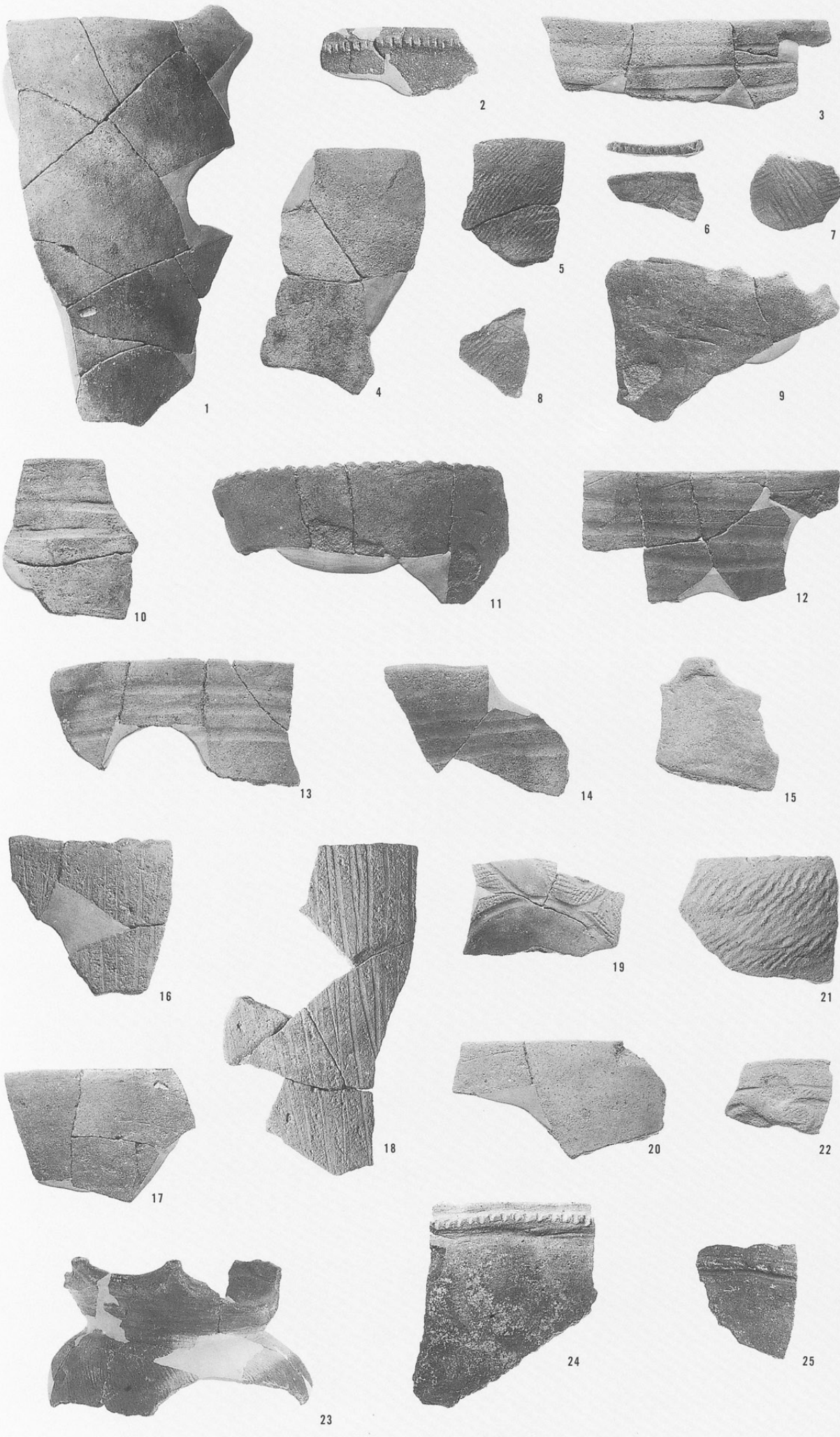
後期中葉の土器
IX層

- 1 A地区



晩期前半の土器
Ⅷ層

- 1 SQ1004-31
- 2 SQ1006-33
- 3 包含層-44
- 4 包含層-38
- 5 包含層-40
- 6 包含層-45
- 7 包含層-47
- 8 包含層-51
- 9 包含層-52
- 10 包含層-53
- 11 包含層-54
- 12 包含層-63
- 13 包含層-64
- 14 包含層-65
- 15 包含層-77
- 16 包含層-82
- 17 包含層-83
- 18 包含層-88
- 19 包含層-85
- 20 包含層-91
- 21 包含層-92
- 22 包含層-95

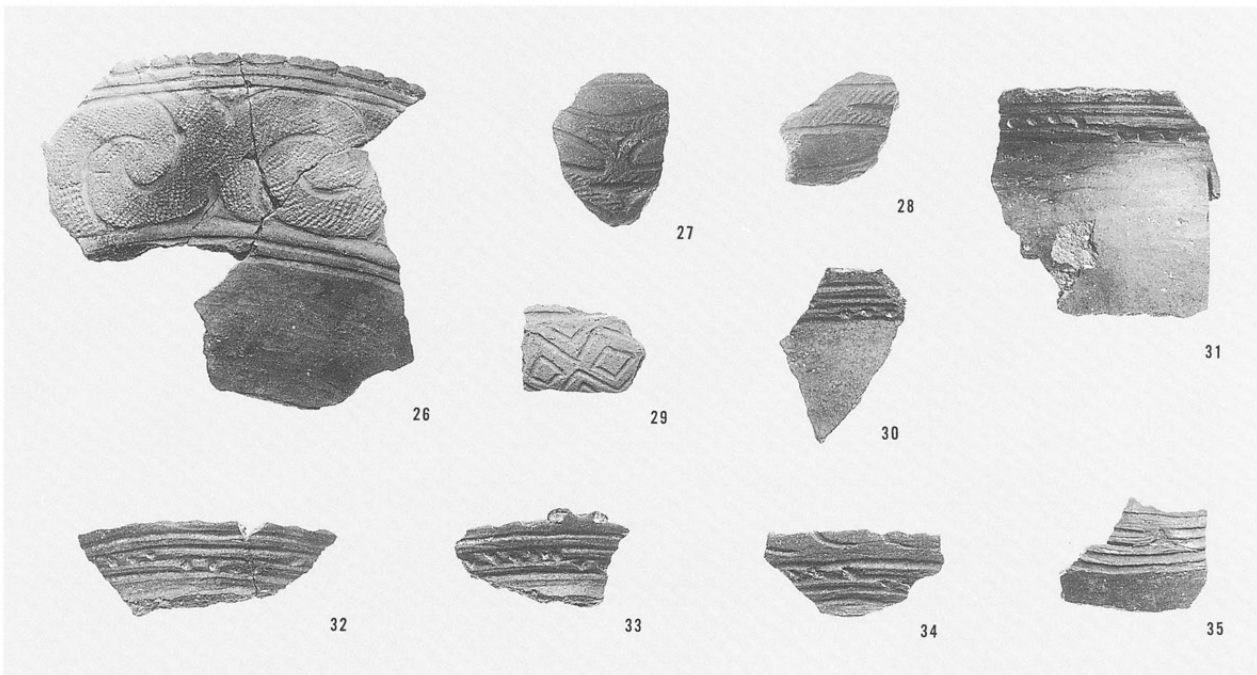


晩期の土器

- 23 他時期混入-102
- 24 他時期混入-103
- 25 他時期混入-107

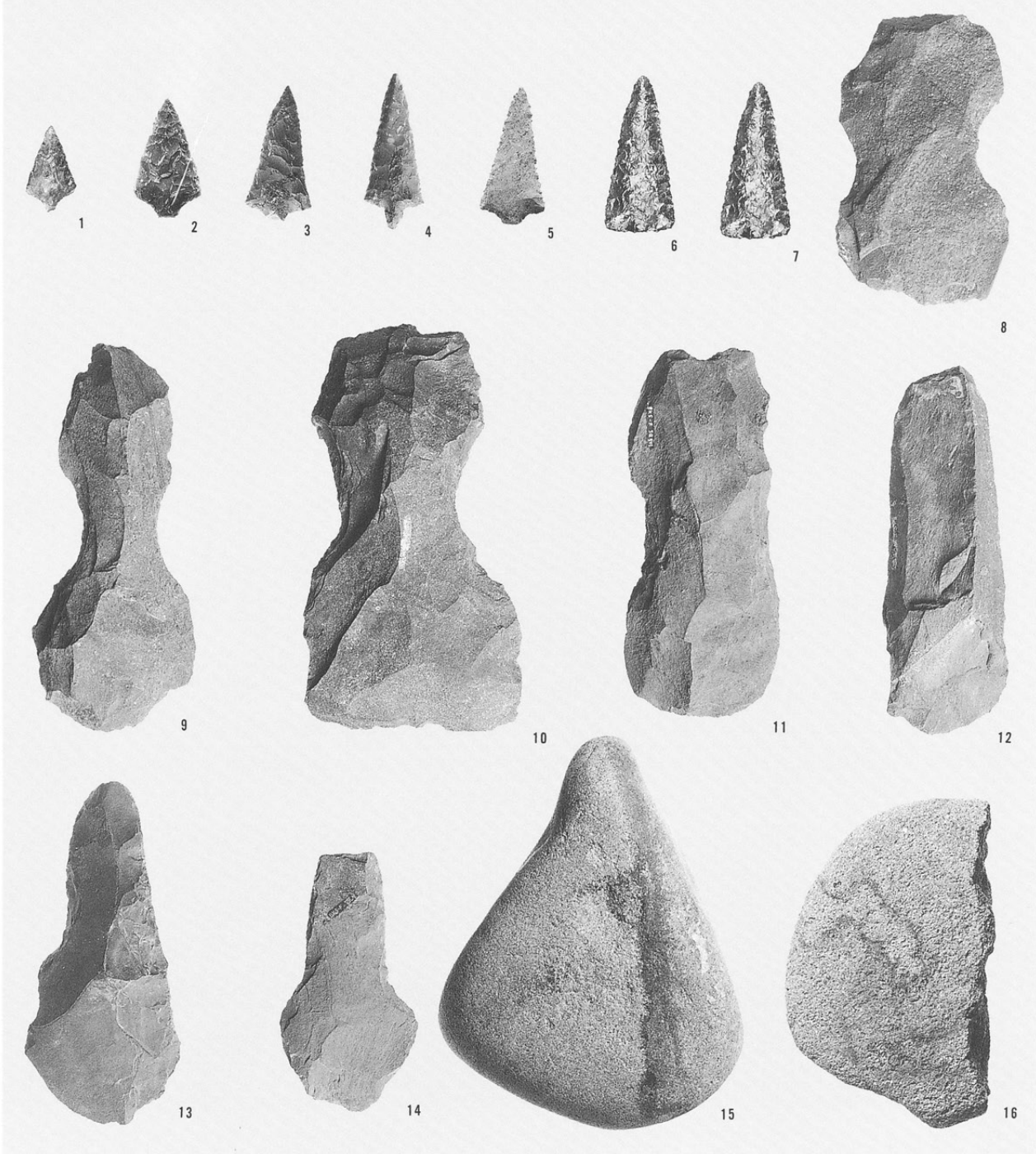
晩期の土器

- 26 他時期混入-108
- 27 他時期混入-109
- 28 他時期混入-112
- 29 他時期混入-114
- 30 他時期混入-118
- 31 他時期混入-117
- 32 他時期混入-119
- 33 他時期混入-120
- 34 他時期混入-122
- 35 他時期混入-129



晩期前半の石器
Ⅸ層上面～Ⅷ層

- 1 G地区
- 2 J地区
- 3 J地区
- 4 J地区
- 5 J地区
- 6 J地区
- 7 D地区
- 8 H地区
- 9 H地区
- 10 H地区
- 11 SQ501
- 12 E地区
- 13 C地区
- 14 F地区
- 15 E地区
- 16 E地区



長野県埋蔵文化財センター発掘調査報告書 51

上信越自動車道埋蔵文化財発掘調査報告書 24

—更埴市内 その3—

更埴条里遺跡・屋代遺跡群

(含む大境遺跡・窪河原遺跡)

—縄文時代編—

遺物・写真図版

発行 平成12(2000)年3月31日
発行者 (財)長野県文化振興事業団
長野県埋蔵文化財センター
〒387-0007 更埴市屋代字清水260-6
長野県立歴史館内
TEL 026-274-3891
FAX 026-274-3892
印刷 信毎書籍印刷株式会社

