

- 6 包含層-23
- 7 包含層-34
- 8 包含層-41
- 9 包含層-42
- 10 包含層-43
- 11 包含層-72
- 12 包含層-9
- 13 包含層-12
- 14 包含層-47
- 15 包含層-54





SB5401-1



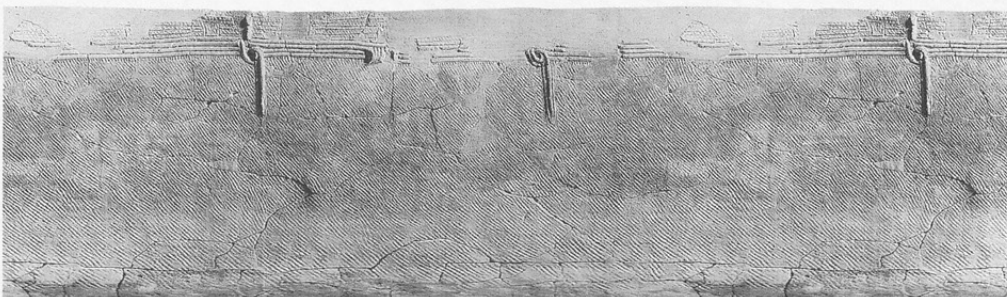
SB5404-1



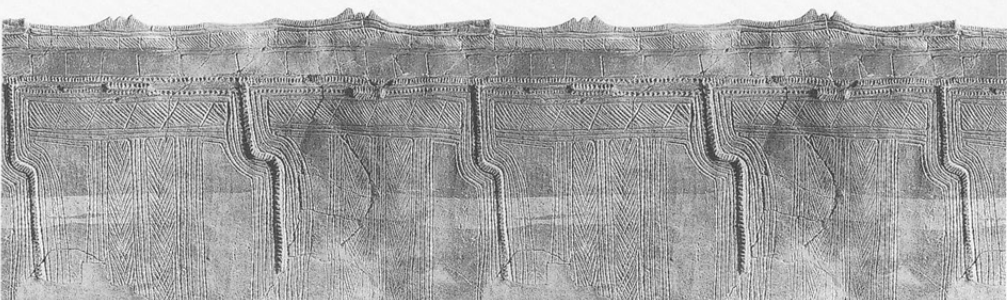
SB5412a-1



SB7502-1

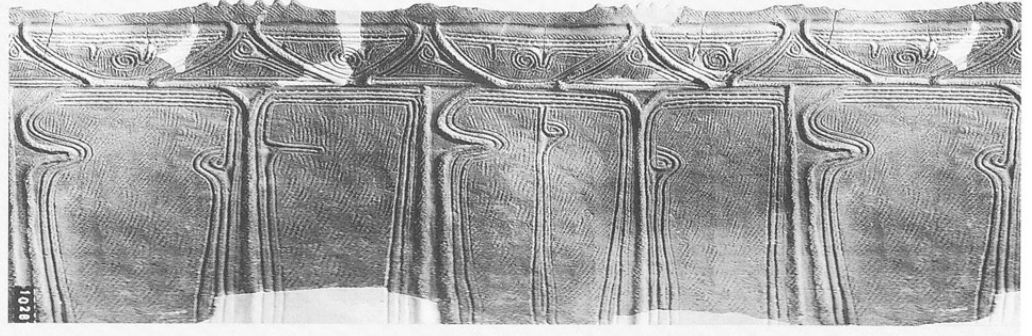


SB9008-2

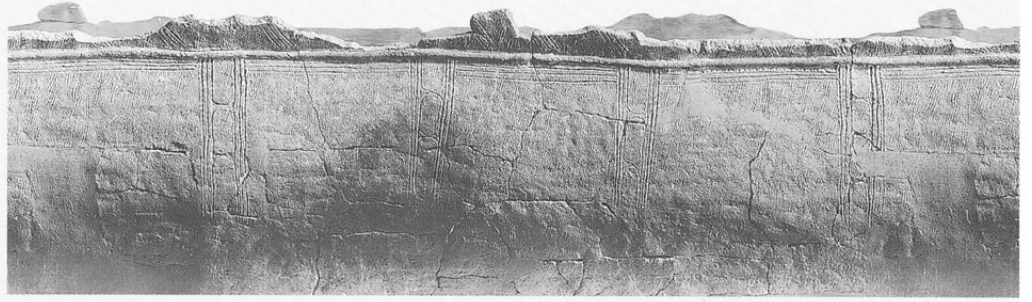




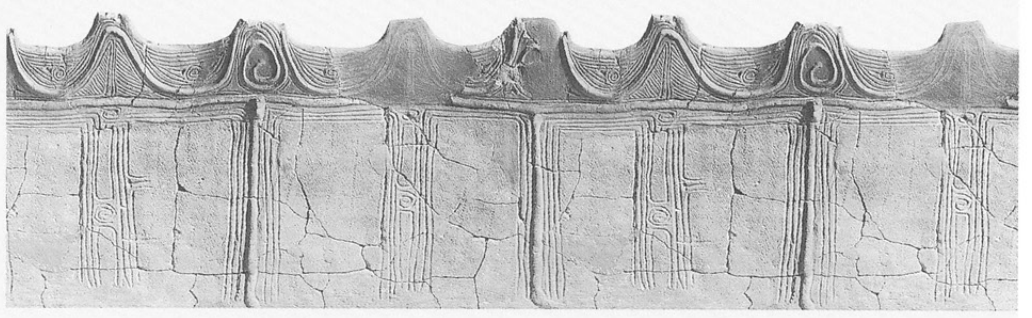
SB9009-1



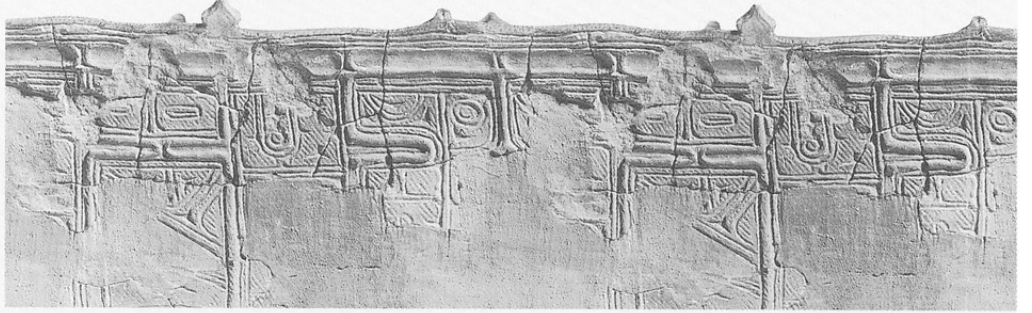
SB9010-1



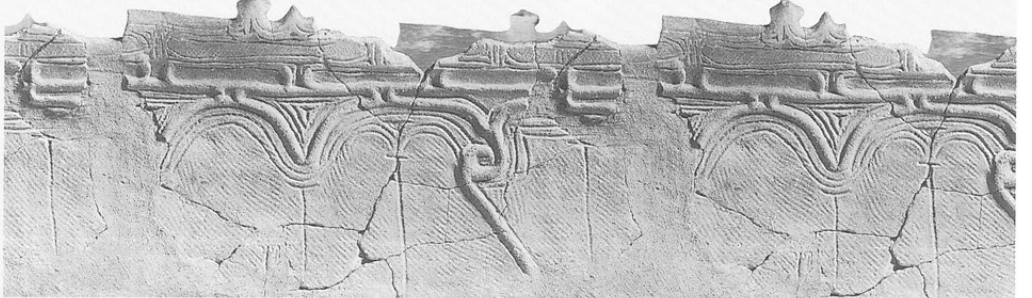
SB9011-31



SB9011-33



SB9011-35





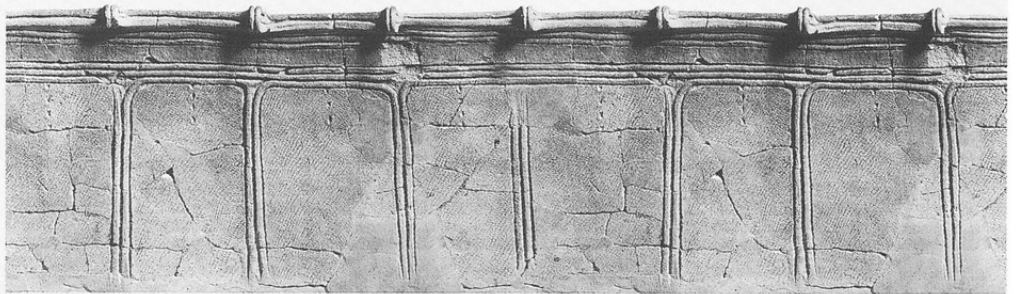
SB9012-5



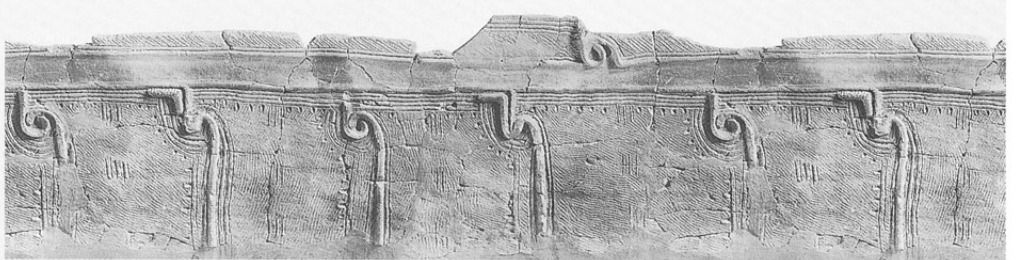
SB9012-9



SB9012-16



SB9015-1



SQ7003-6

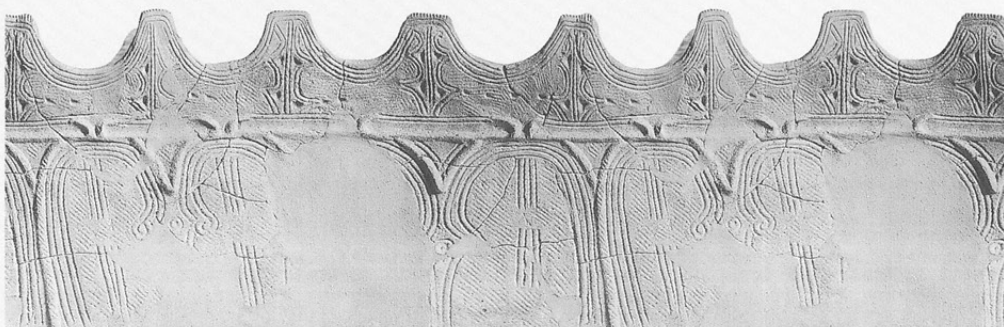




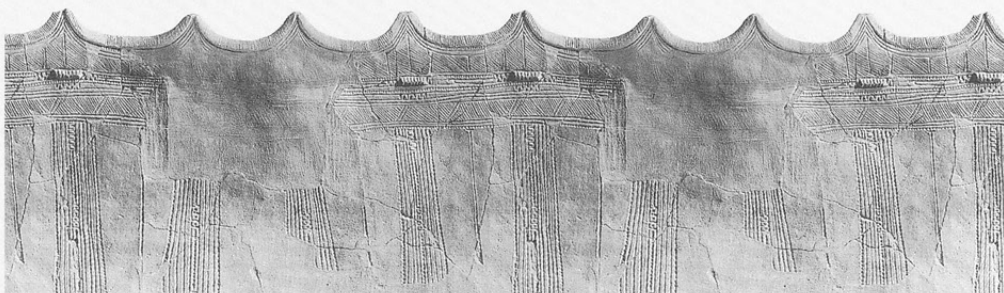
SQ7003-66



SQ7003-83



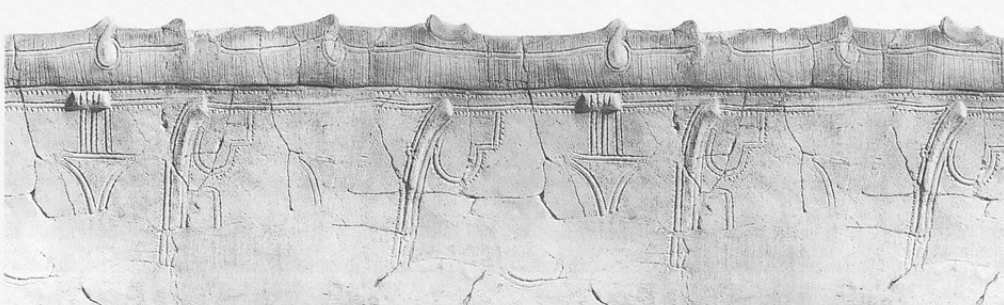
SQ7003-160



SQ7003-220

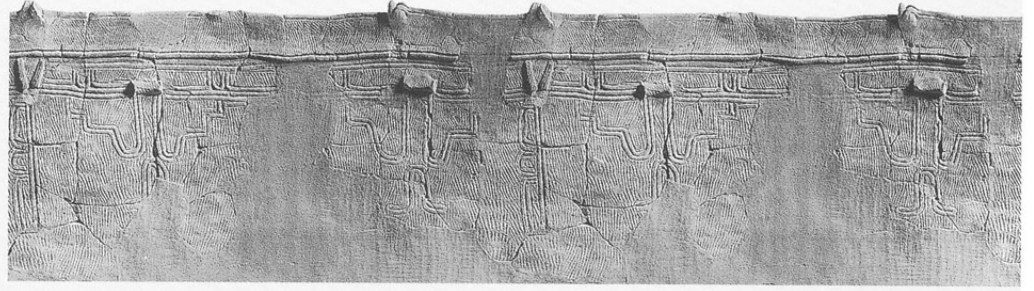


SQ7003-226

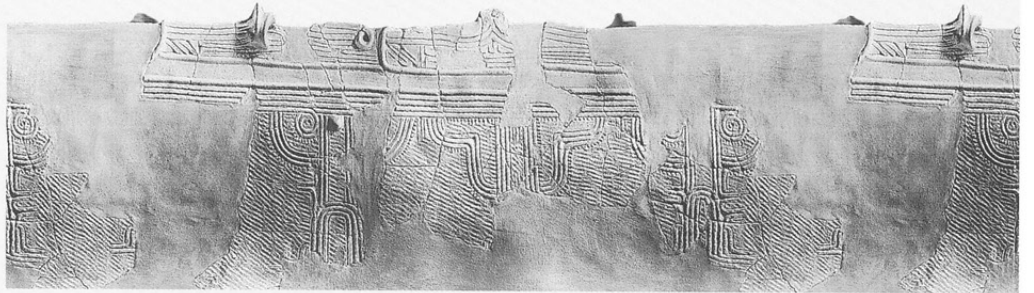




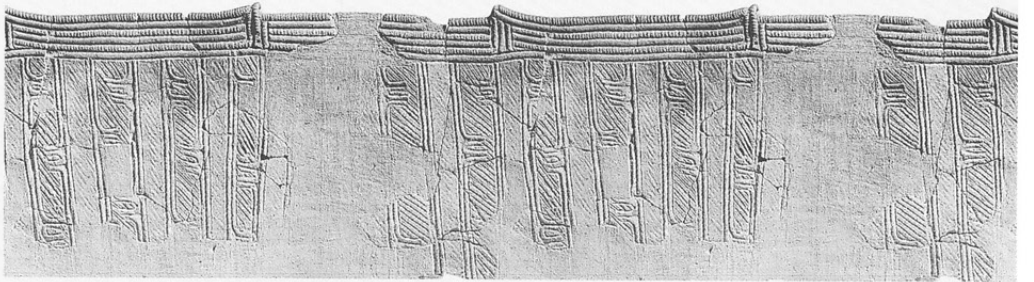
SQ7003-227



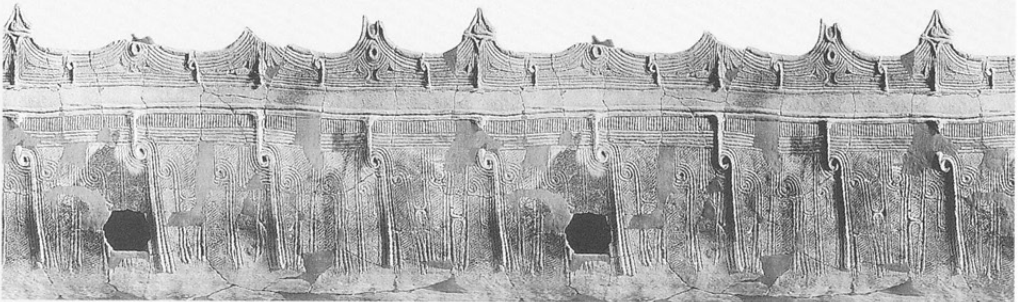
SQ7003-232



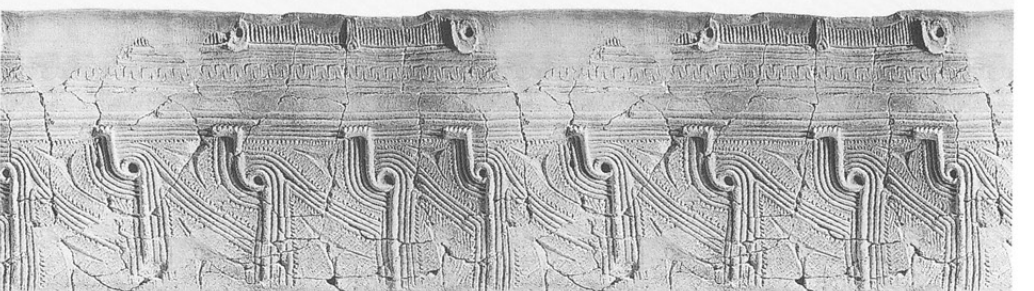
SQ7003-240



SQ7003-252



SQ7003-258

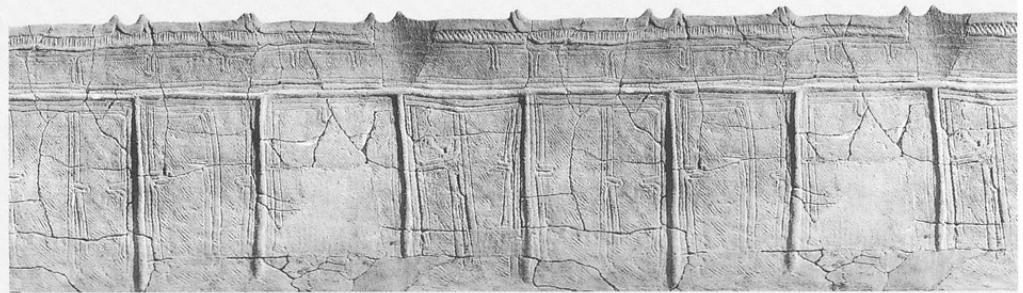




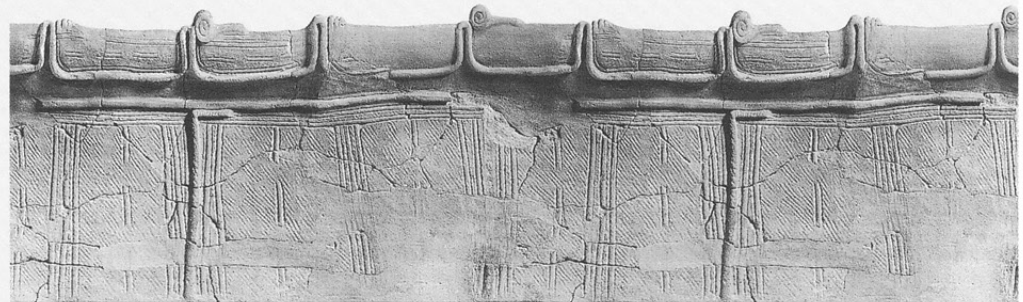
SQ7003-341



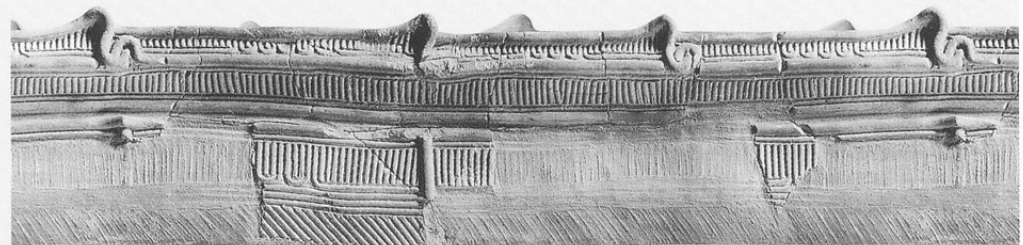
SQ7003-343



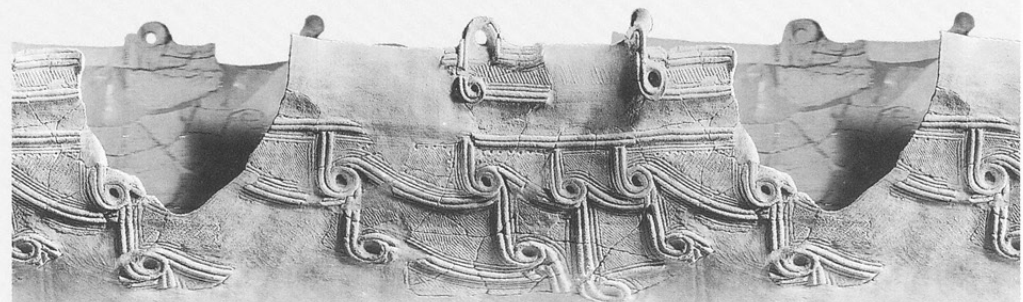
SQ7003-353



SQ7003-362



SQ9004-1



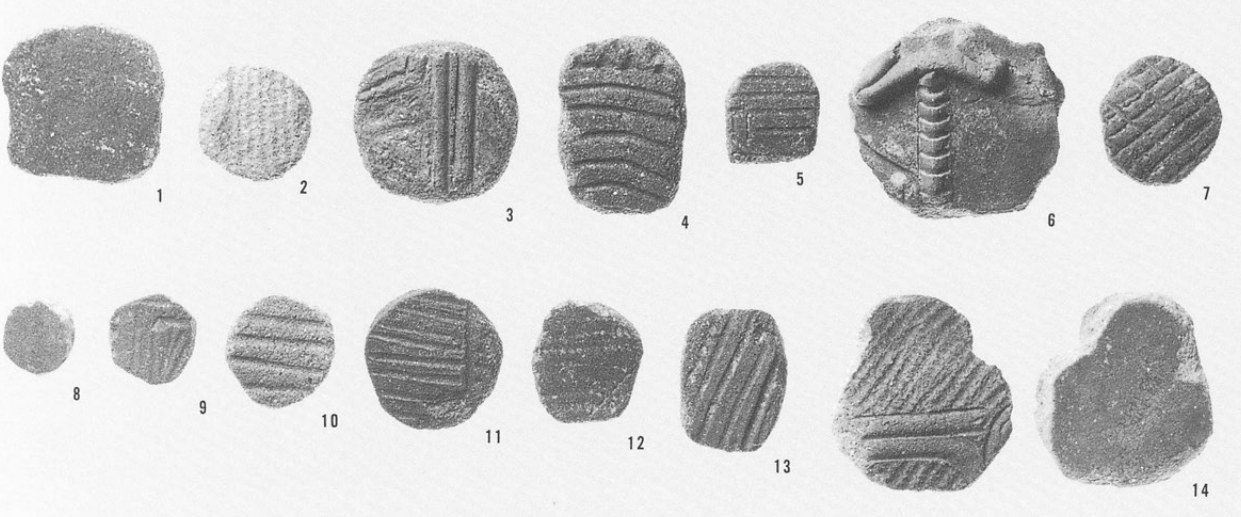
土偶

- 1 SB5408
- 2 SB5408
- 3 SK7670
- 4 SK7670
- 5 SQ7003
- 6 SQ7003
- 7 SQ7003
- 8 SQ7003
- 11 SQ7003
- 13 SQ7003
- 14 包含層
- 15 包含層
- 16 他時期混入
- 17 他時期混入

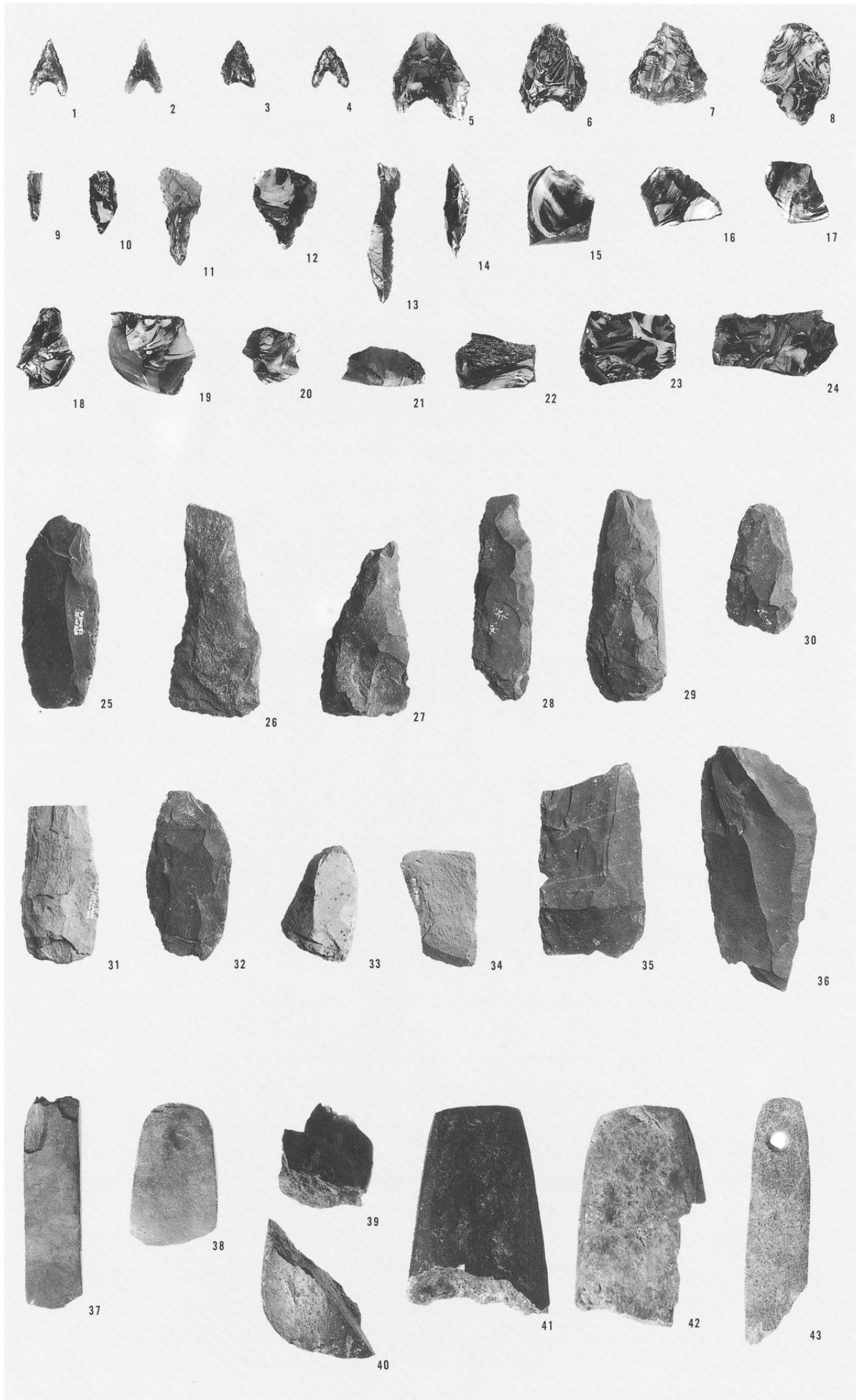


土器片製円盤

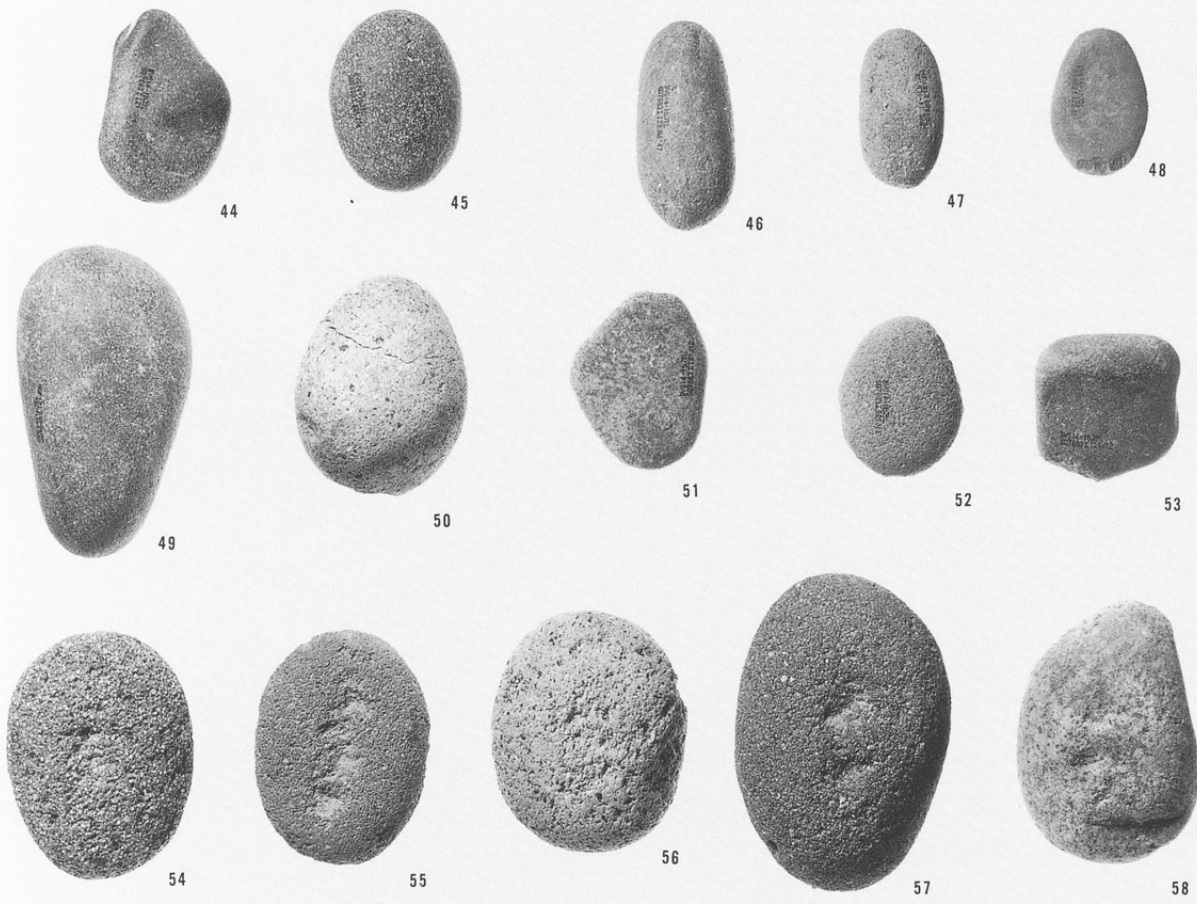
- 1 SB5401
- 2 SB5408
- 3 SB9010
- 4 SB9011
- 5 SK7668
- 6 SK7676
- 7 包含層
- 8 包含層
- 9 包含層
- 10 包含層
- 11 包含層
- 12 包含層
- 13 包含層
- 14 包含層



- 1 SQ7003-3
- 2 SQ7003-2
- 3 SQ7003-4
- 4 SQ7003-5
- 5 SQ7003-7
- 6 SQ7003-8
- 7 SQ7003-9
- 8 SQ7003-10
- 9 SB5404-11
- 10 SB7502-12
- 11 SQ7003-14
- 12 SQ7003-15
- 13 SB9009-17
- 14 SQ7003-18
- 15 SB5412-32
- 16 SB5412-33
- 17 SB5412-34
- 18 SB9010-35
- 19 SB9010-36
- 20 SQ7003-37
- 21 SQ7003-38
- 22 SQ7003-39
- 23 SB5412-42
- 24 SB5412-41
- 25 SB9013-19
- 26 SQ7003-21
- 27 SQ7003-20
- 28 SQ7003-22
- 29 SQ7003-23
- 30 SQ7003-25
- 31 SQ7003-24
- 32 SQ7003-26
- 33 SB5402-28
- 34 SB9010-29
- 35 SB5402-31
- 36 SB9014-30
- 37 SQ7003-44
- 38 ㊦ b 区包含層-46
- 39 ㊦ a 区包含層-47
- 40 ㊦ b 区包含層-50
- 41 ㊦ b 区包含層-48
- 42 ㊦ a 区包含層-45
- 43 ㊦ a 区包含層-70



中期前葉の石器



- 44 SQ7003-51
- 45 SQ7003-52
- 46 SQ7003-55
- 47 SQ7003-56
- 48 SQ7003-57
- 49 SQ7003-58
- 50 SB9010-59
- 51 SQ7003-60
- 52 SQ7003-61
- 53 SQ7003-62
- 54 SB9010-64
- 55 SB9011-65
- 56 SB9071-66
- 57 SQ7003-68
- 58 SQ7003-69
- 59 SQ7003-71
- 60 SQ7003-72
- 61 SQ7003-73
- 62 SB9016-74
- 63 SB5408-75



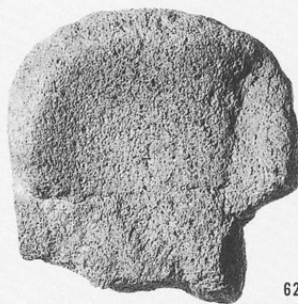
59



60



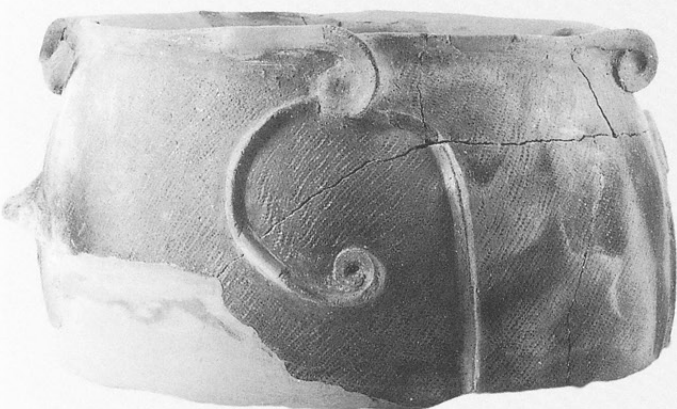
61



62



63



1



2



3

中期中葉の土器
XIII-2層

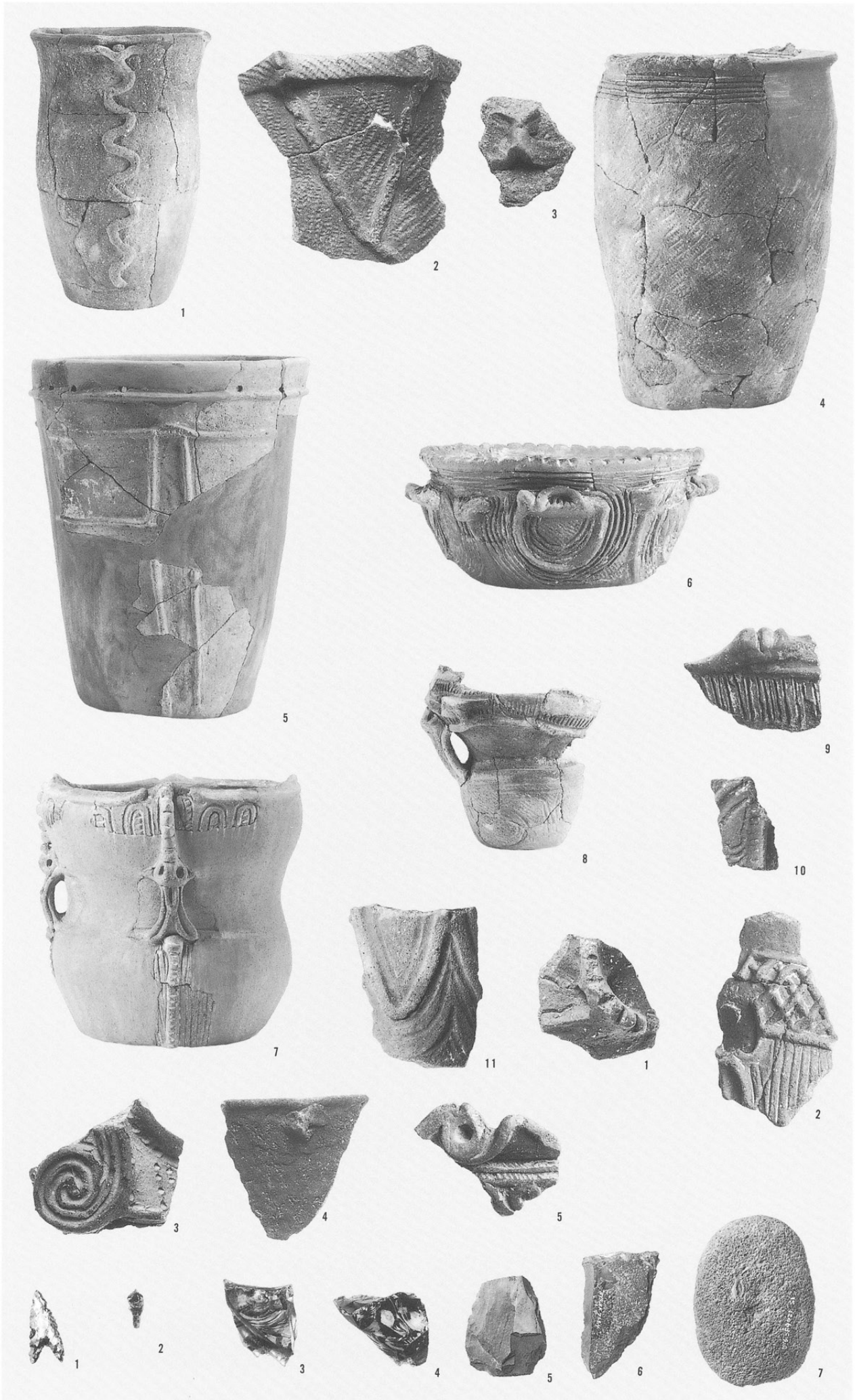
- 1 SB6801-1
- 2 SB6801-1

XIII-3層

- 3 包含層-1

XIII - 2層

- 1 包含層-4
- 2 包含層-6
- 3 包含層-10
- 4 包含層-12
- 5 包含層-13
- 6 包含層-15
- 7 包含層-18
- 8 包含層-19
- 9 包含層-1
- 10 包含層-5
- 11 包含層-7



他時期混入

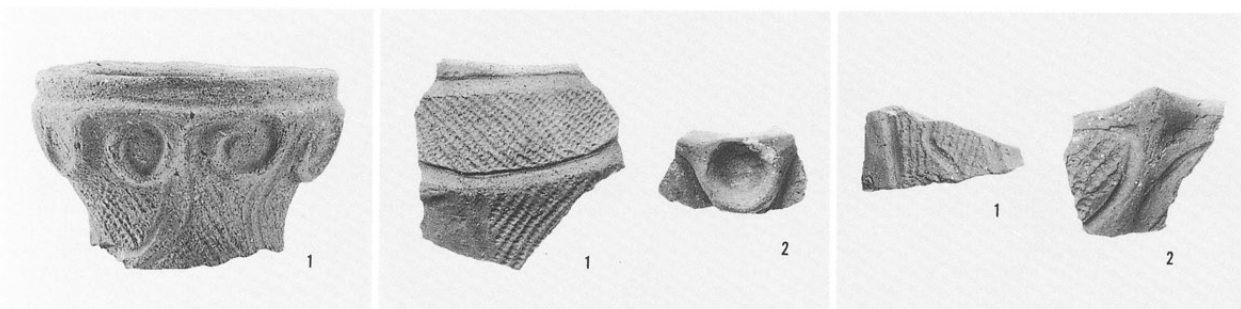
- 1 他時期混入-1
- 2 他時期混入-3
- 3 他時期混入-2
- 4 他時期混入-5
- 5 他時期混入-6

中期中葉の石器
XIII層

- 1 SK7664-1
- 2 SK7664-2
- 3 SK7664-3
- 4 SK7664-4
- 5 SK7664-5
- 6 SK7664-6
- 7 SF9021-8

屋代遺跡群
Ⅻ-2層 土器

左： 1 SB5302-1
中： 1 SB5307-1
2 SB5307-2
右： 1 SB5309-1
2 SB5309-3-1



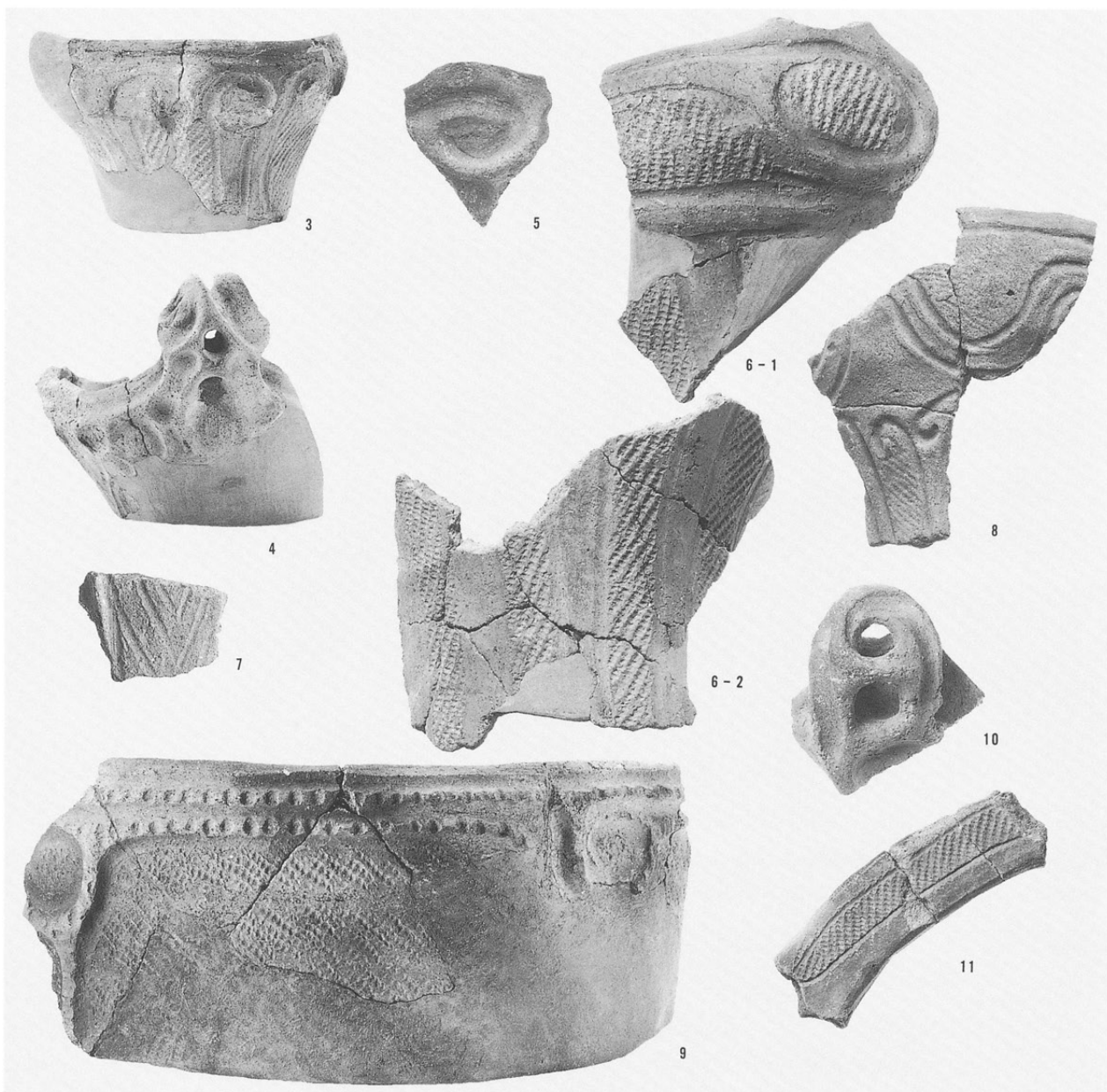
1 SB5310-1
2 SB5310-35-2
3 SB5310-10
4 SB5310-27
5 SB5310-7
※SB5310-35-2は接
合前



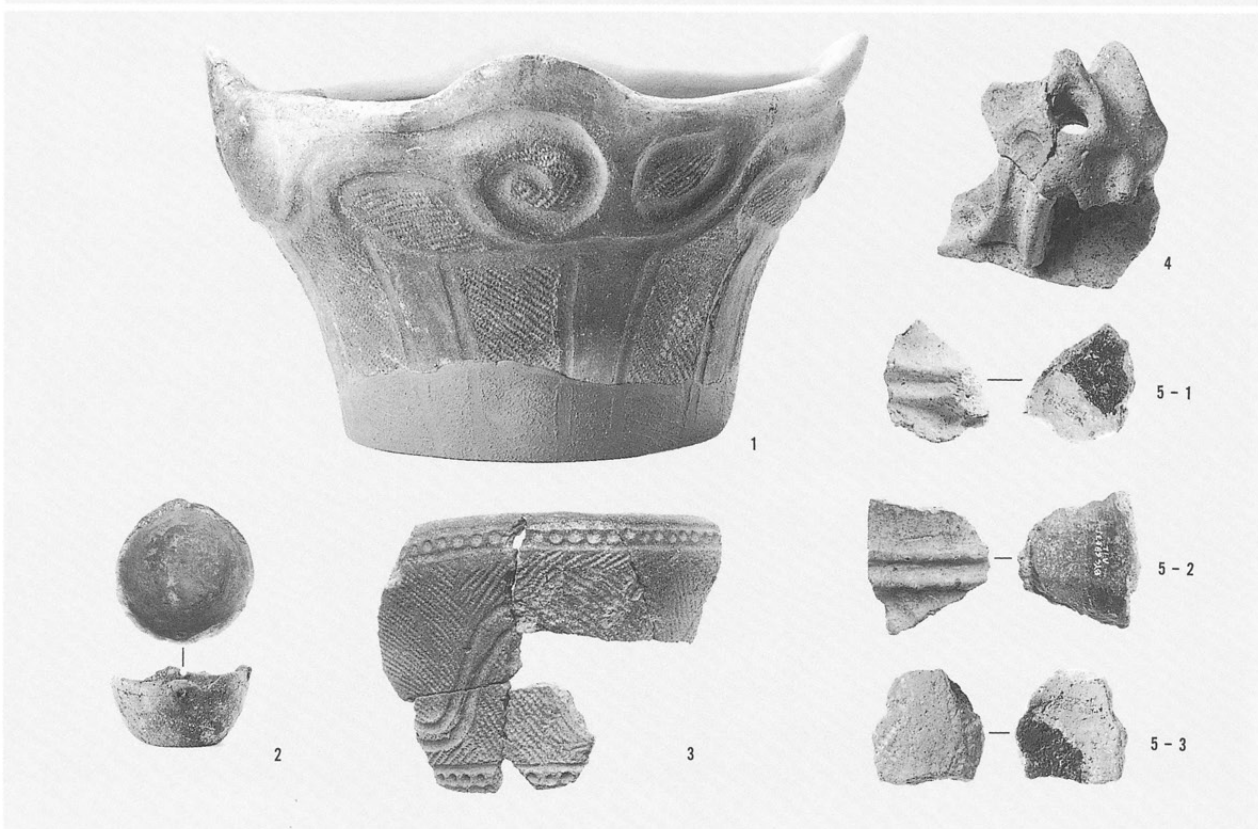
1 SB5311-6
2 SB5311-13



- 3 SB5311-15
- 4 SB5311-23
- 5 SB5311-22
- 6-1 SB5311-26-1
- 6-2 SB5311-26-2
- 7 SB5311-27
- 8 SB5311-28
- 9 SB5311-30
- 10 SB5311-32
- 11 SB5311-53



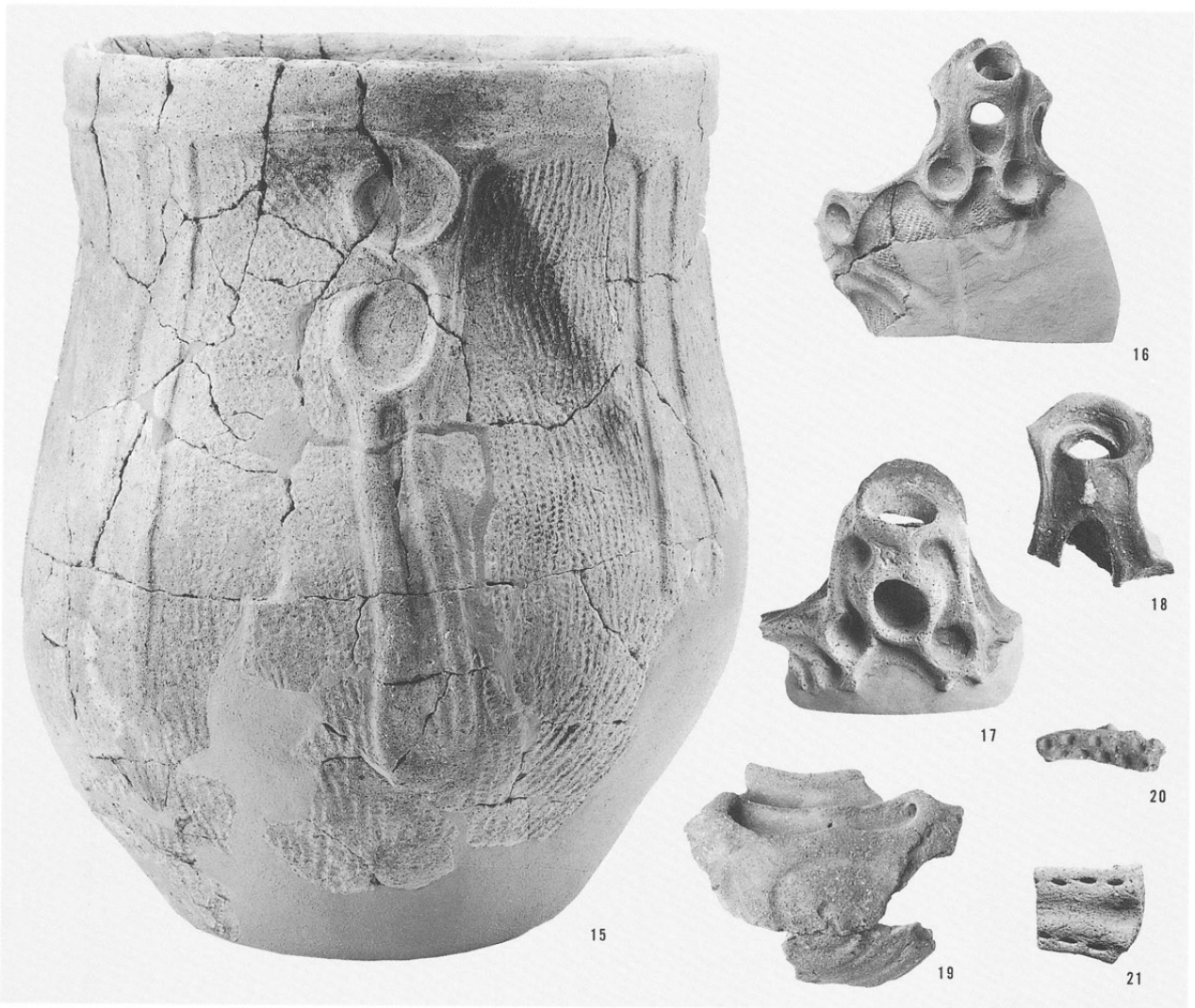
- 1 SB5312-1
- 2 SB5312-11
- 3 SB5312-16
- 4 SB5312-34
- 5-1 SB5312-49-1
- 5-2 SB5312-49-2
- 5-3 SB5312-49-3





- 1 SB5313a-1
- 2 SB5313a-9
- 3 SB5313a-3
- 4 SB5313a-15
- 5 SB5313a-28
- 6 SB5313b-36
- 7 SB5313a-31
- 8 SB5313b-41
- 9 SB5313b-44
- 10 SB5313a-4
- 11 SB5313a-5
- 12 SB5313a-7
- 13 SB5313a-11
- 14 SB5313b-16

- 15 SB5313a-34
- 16 SB5313b-15
- 17 SB5313b-18
- 18 SB5313a-21
- 19 SB5313a-27
- 20 SB5313a-29
- 21 SB5313a-33



- 1 SB5314-1
- 2 SB5314-3
- 3 SB5314-2
- 4 SB5314-6





1



2



3



4



5



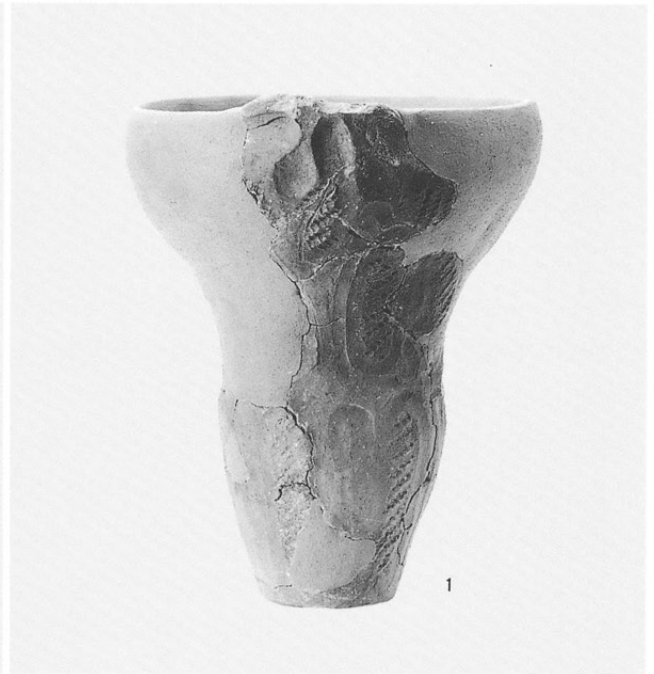
6

- 1 SB5316-1
- 2 SB5316-3
- 3 SB5316-5
- 4 SB5316-6
- 5 SB5316-8
- 6 SB5316-7

- 7 SB5316-9
- 8 SB5316-17
- 9 SB5316-12
- 10 SB5316-18



- 左：1 SB5317-1
- 右：1 SB5318-3



- 1 SB5319-1
- 2 SB5319-3





3



4



5



6



7

- 3 SB5319-4
- 4 SB5319-7
- 5 SB5319-14
- 6 SB5319-12
- 7 SB5319-15

- 1 SB5321-1
- 2 SB5321-2
- 3 SB5321-8
- 4 SB5321-9

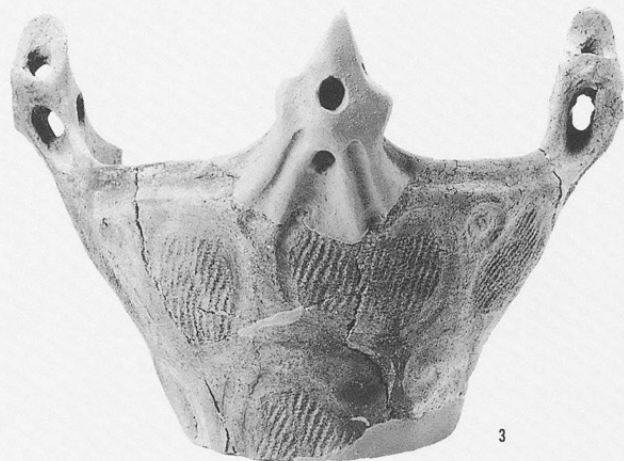


- 1 SB5322-1

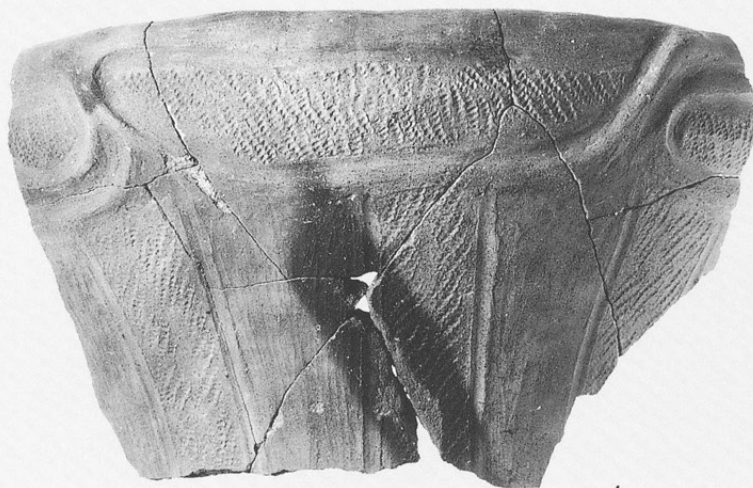


- 1 SB5323-1
- 2 SB5323-2





- 3 SB5323-4
- 4 SB5323-8
- 5 SB5323-10



- 1 SB5324-3
- 2 SB5324-12
- 3 SB5324-15
- 4 SB5324-17
- 5 SB5324-18





6



1

2



3



4

6 SB5324-30

1 SB5325-1

2 SB5325-6

3 SB5325-3

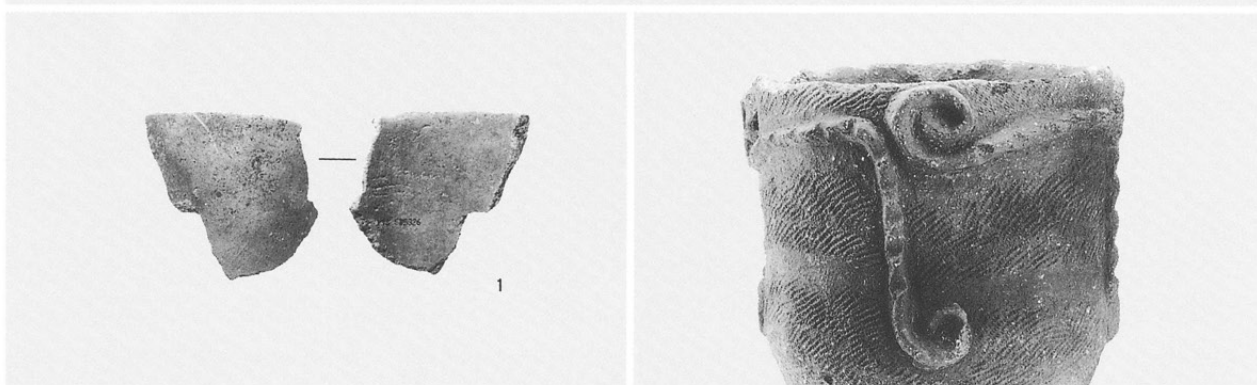
4 SB5325-7

5 SB5325-19

6 SB5325-9



1 SB5326-1



1 SB5328-1

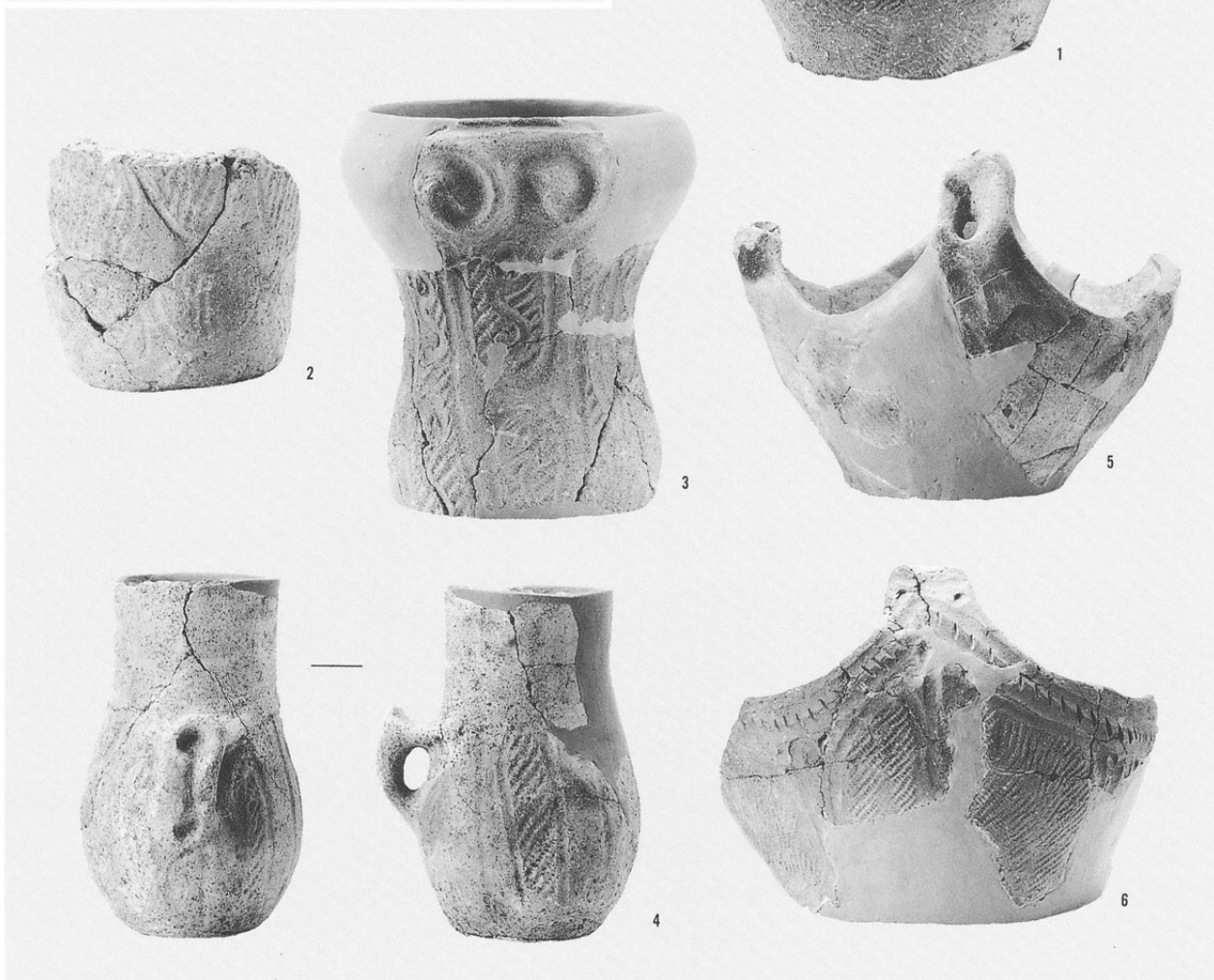
2 SB5328-2

3 SB5328-7

4 SB5328-15

5 SB5328-21

6 SB5328-28





7



8



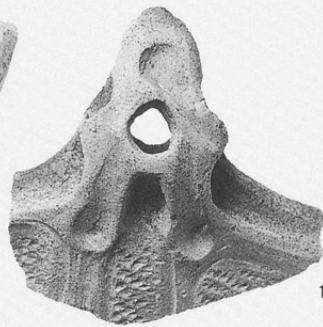
9



12



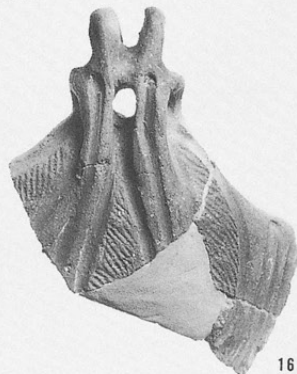
10



13



14



16



11



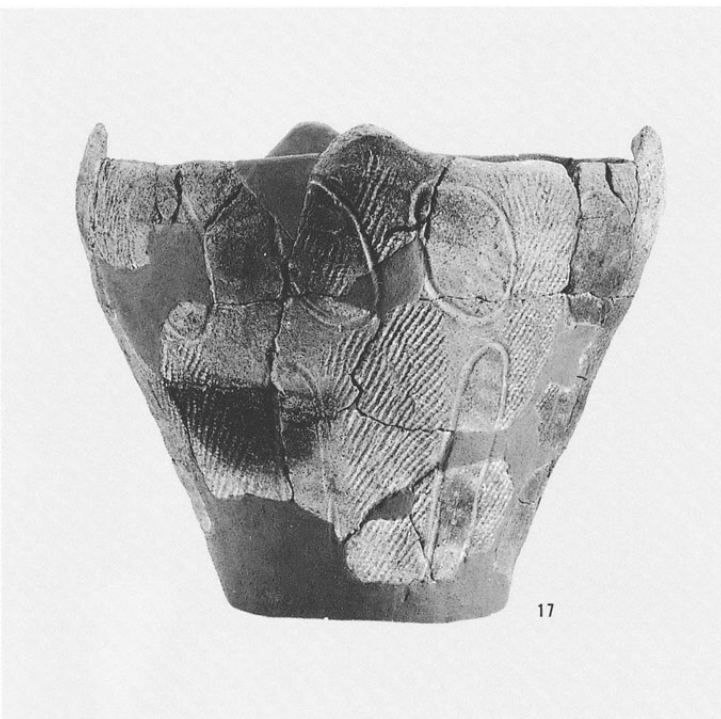
15

- 7 SB5328-6
- 8 SB5328-30
- 9 SB5328-45
- 10 SB5328-18
- 11 SB5328-40
- 12 SB5328-10
- 13 SB5328-11
- 14 SB5328-12
- 15 SB5328-20
- 16 SB5328-35

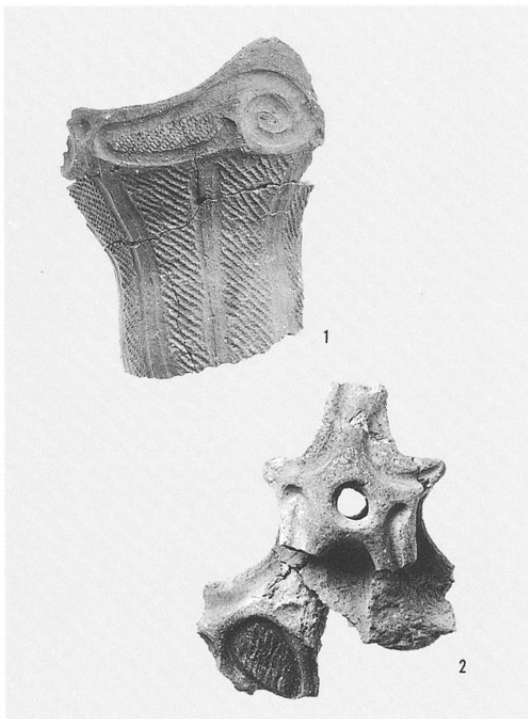
左：17 SB5328-27

右：1 SB5329-3

2 SB5329-2



17



1

2

1 SB5332-5

2 SB5332-6

3 SB5332-7

4 SB5332-16

5 SB5332-24

6 SB5332-52



1



2



4



3

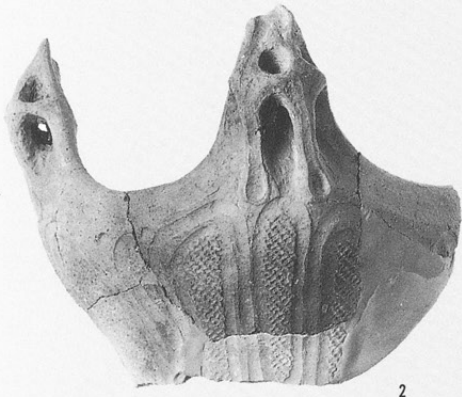


5



6

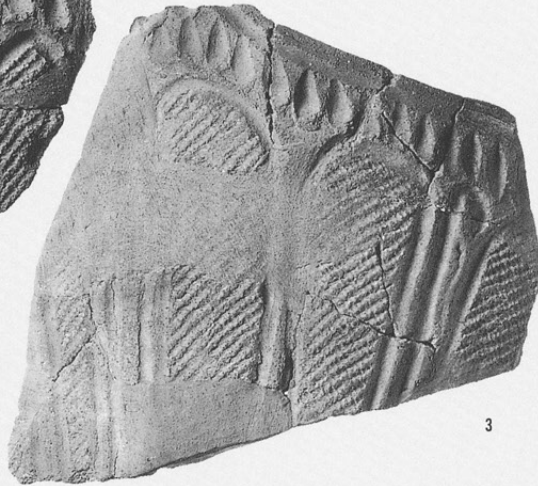
- 1 SB5335-1
- 2 SB5335-6
- 3 SB5335-8-1
8-2



2



1



3

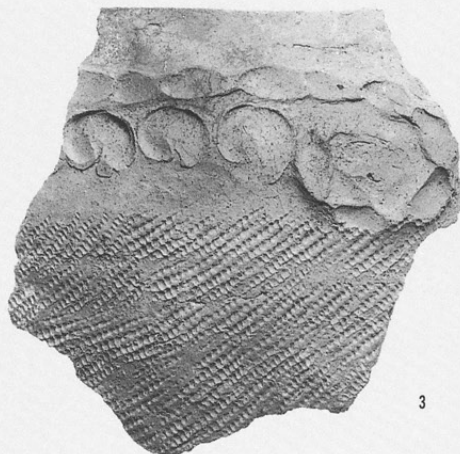


1

- 1 SB5336-1
- 2 SB5336-2
- 3 SB5336-6



2



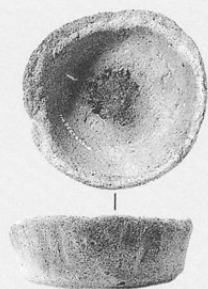
3

- 1 SB5337-12
- 2 SB5337-13
- 3 SB5337-14
- 4 SB5337-15
- 5 SB5337-17
- 6 SB5337-18





1



3



4



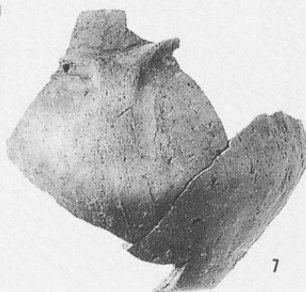
2



5



6



7



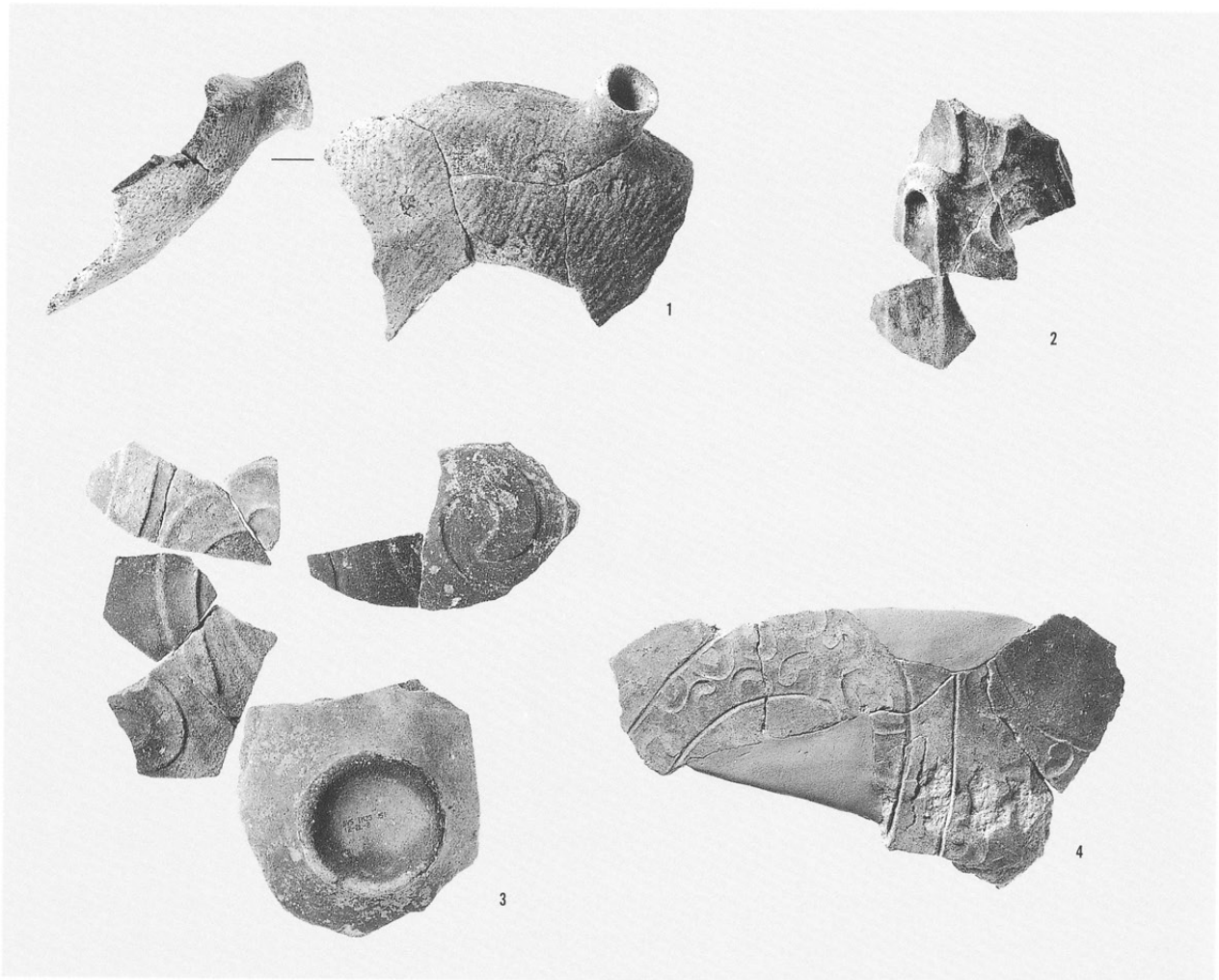
8



9

- 1 SB5338-1
- 2 SB5338-2
- 3 SB5338-4
- 4 SB5338-6
- 5 SB5338-24
- 6 SB5338-31
- 7 SB5338-46
- 8 SB5338-11
- 9 SB5338-66

- 1 SB5339-1
- 2 SB5339-5
- 3 SB5339-3
- 4 SB5339-17



- 1 SB5340-1
- 2 SB5340-9
- 3 SB5340-15





4



5



6



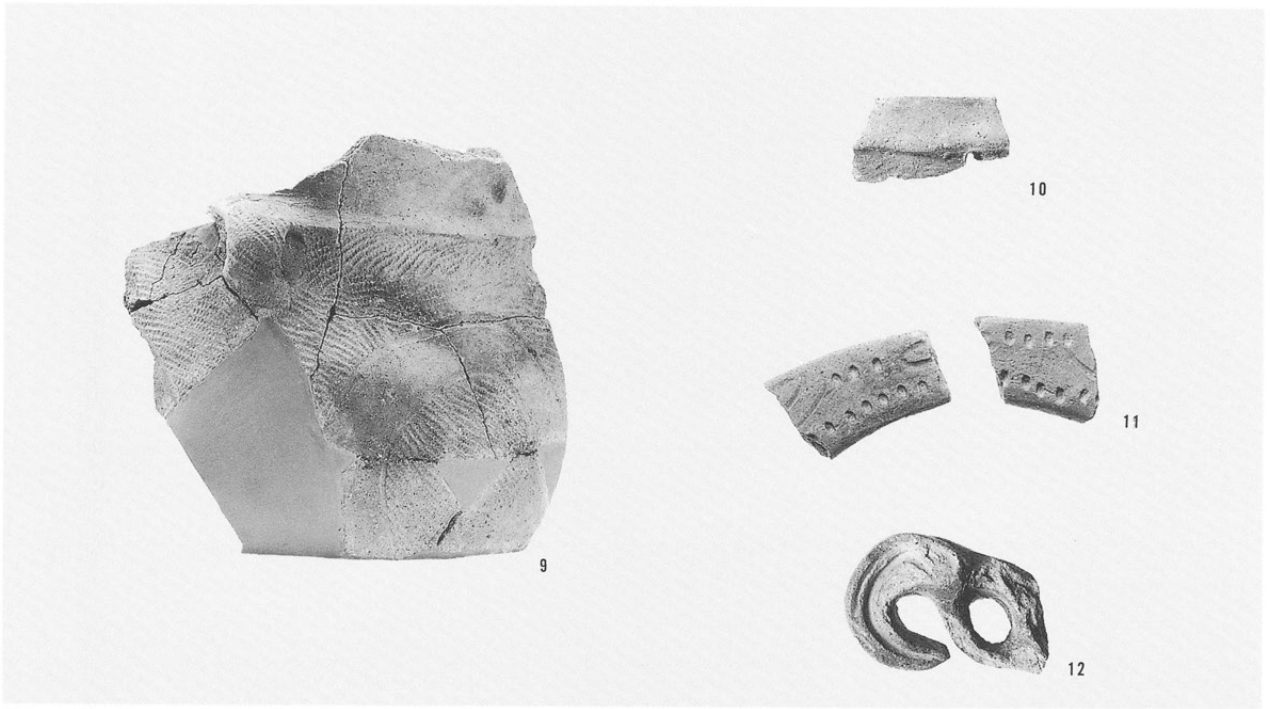
7



8

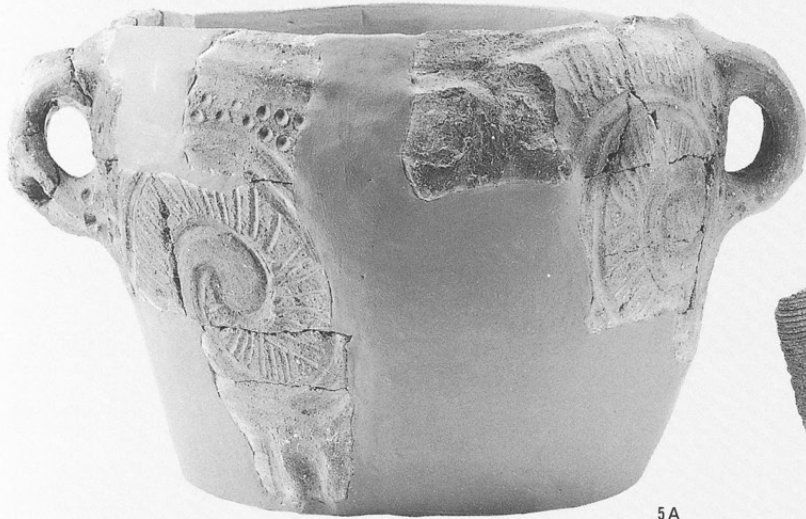
- 4 SB5340-16
- 5 SB5340-21
- 6 SB5340-13
- 7 SB5340-11
- 8 SB5340-36

- 9 SB5340-35
- 10 SB5340-39
- 11 SB5340-41
- 12 SB5340-46

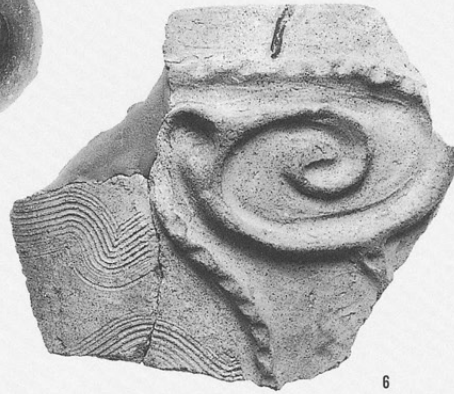


- 1 SB5341-1
- 2 SB5341-2
- 3 SB5341-3
- 4 SB5341-7



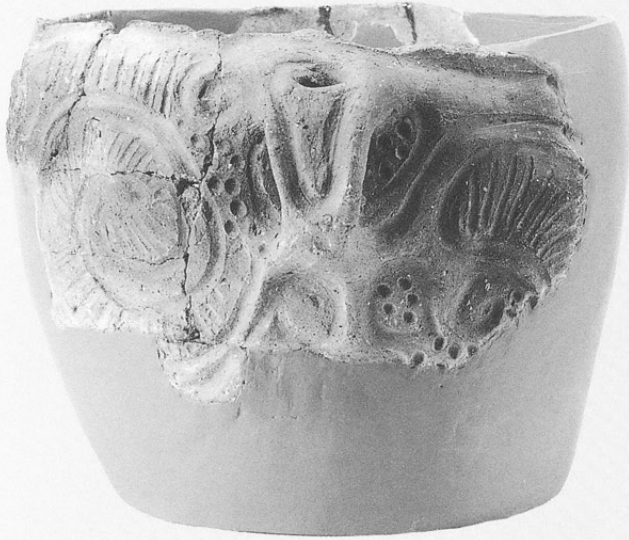


5A



6

- 5A・5B SB5341-14
- 6 SB5341-23
- 7 SB5341-30
- 8 SB5341-34
- 9 SB5341-39
- 10 SB5341-36
- 11 SB5341-42
- 12 SB5341-47
- 13 SB5341-44



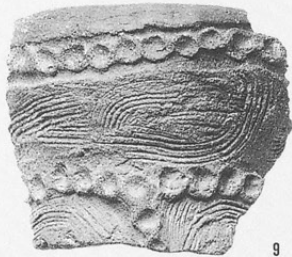
5B



7



8



9



10



11



12



13

- 1 SB5342-1
- 2 SB5342-2
- 3 SB5342-4
- 4 SB5342-5
- 5 SB5342-8
- 6 SB5342-10





1



2



3



4



5



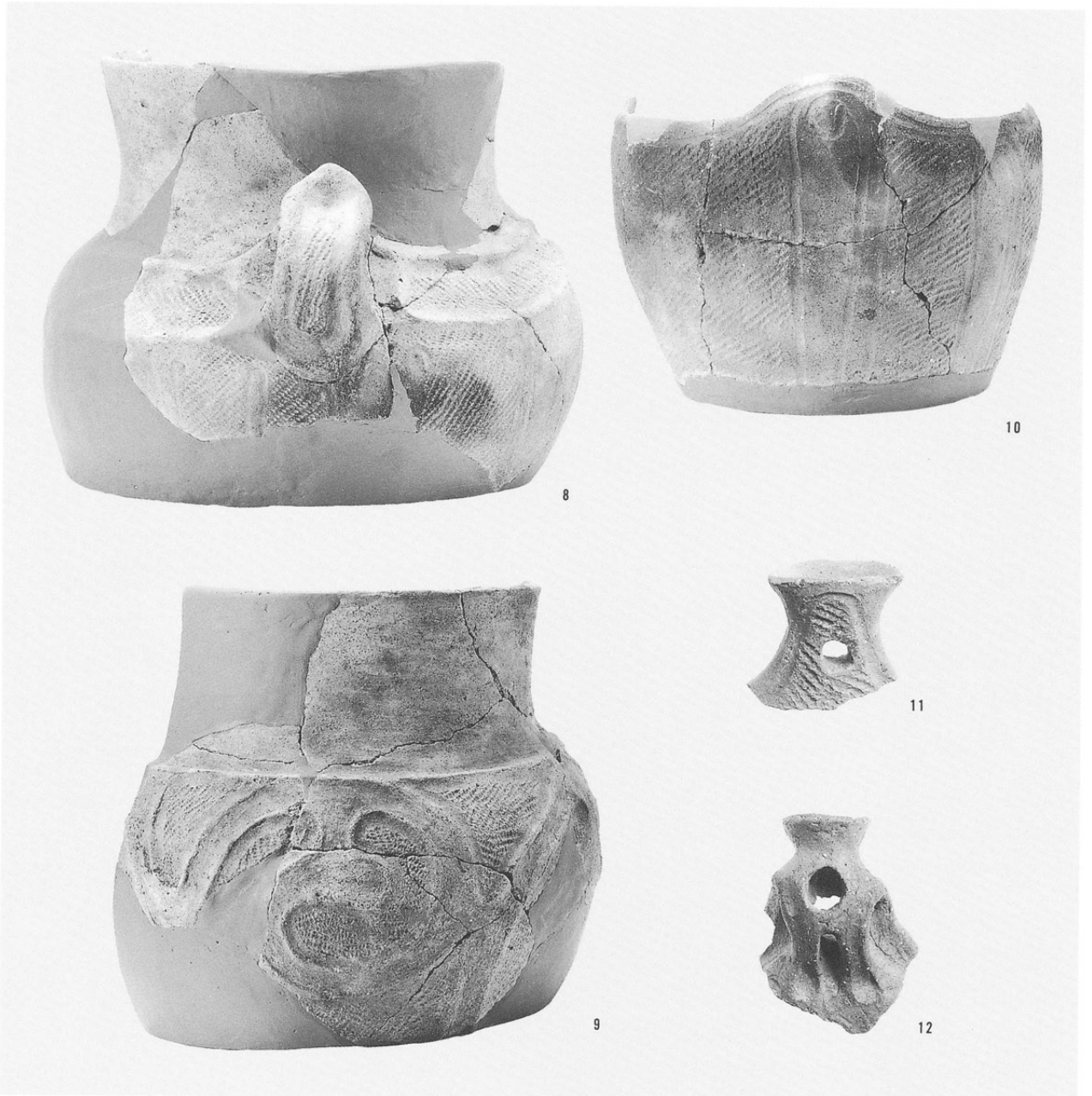
6



7

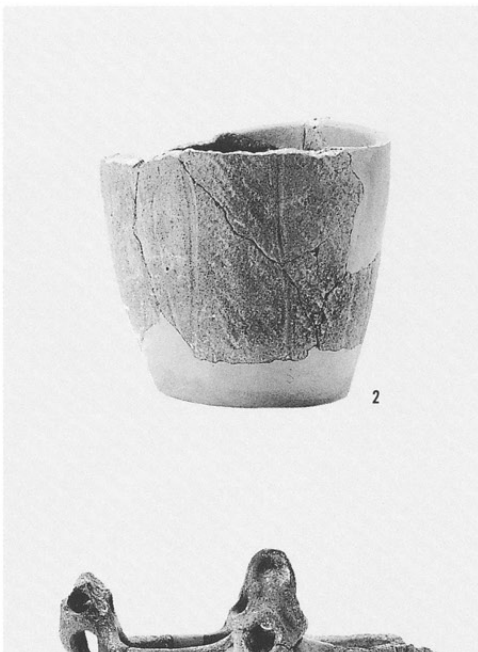
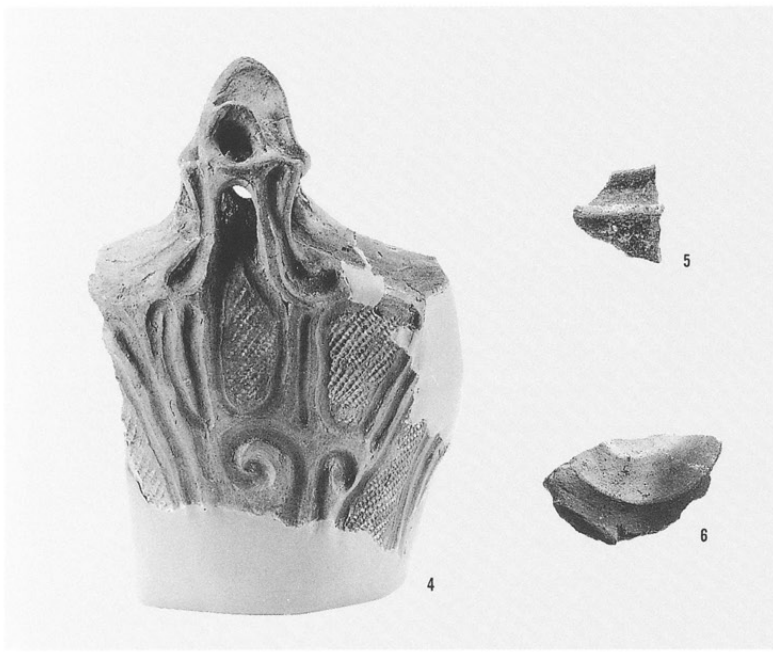
- 1 SB5343-1
- 2 SB5343-8
- 3 SB5343-26
- 4 SB5343-15
- 5 SB5343-23
- 6 SB5343-27
- 7 SB5343-33

- 8 SB5343-35
- 9 SB5343-38
- 10 SB5343-36
- 11 SB5343-5
- 12 SB5343-21



- 1 SB5344-1
- 2 SB5344-7
- 3 SB5344-8

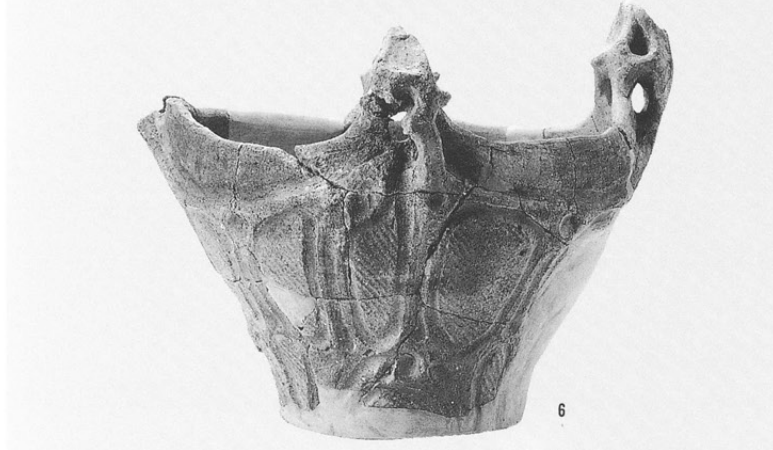




4 SB5344-13
 5 SB5344-22
 6 SB5344-23



1 SB5345-1
 2 SB5345-2
 3 SB5345-5
 4 SB5345-11
 5 SB5345-3
 6 SB5345-13



- 7 SB5345-8
- 8 SB5345-21
- 9 SB5345-24
- 10 SB5345-28
- 11 SB5345-29





12



13



14



16



15



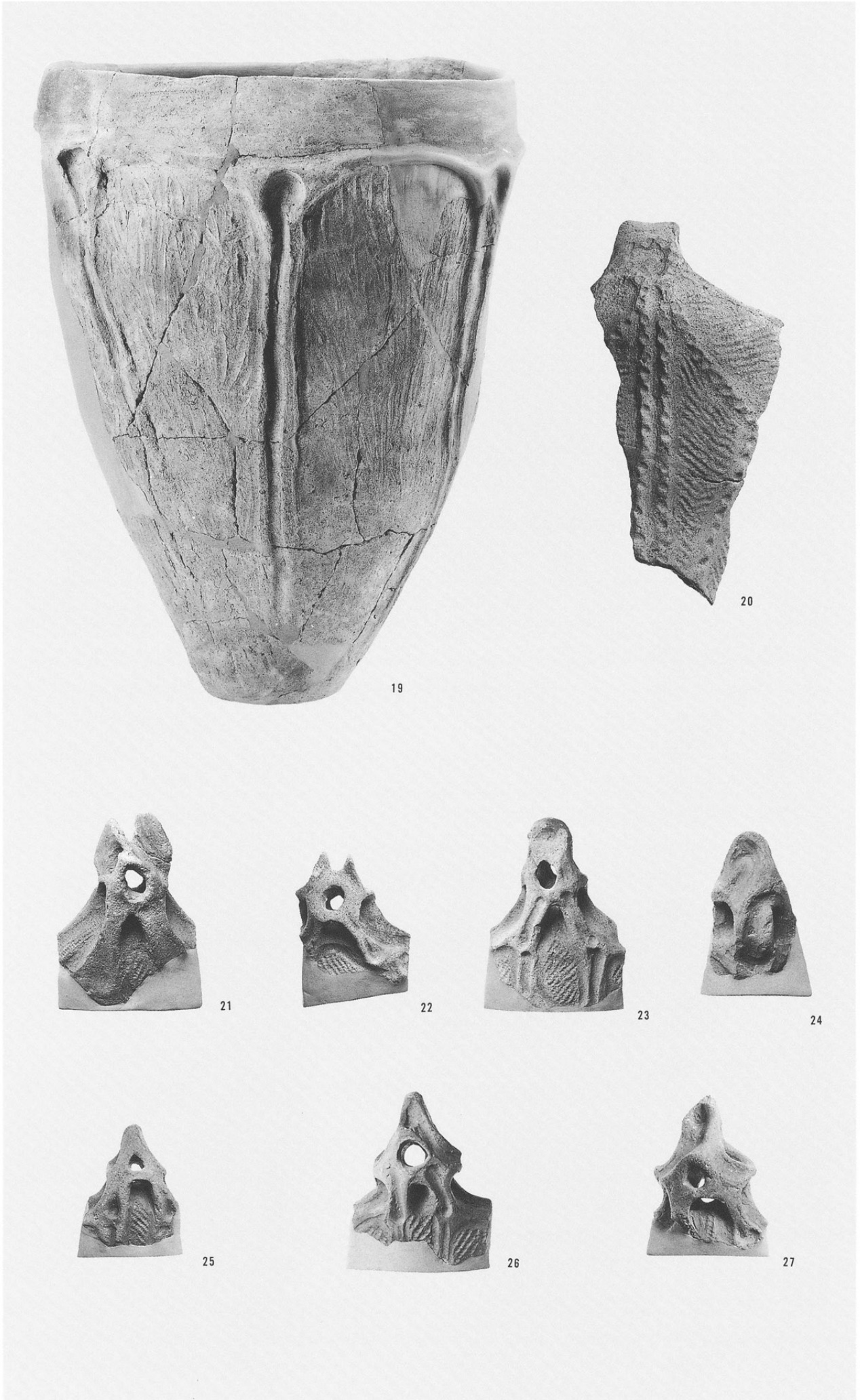
18



17

- 12 SB5345-34
- 13 SB5345-36
- 14 SB5345-44
- 15 SB5345-47
- 16 SB5345-57
- 17 SB5345-65 (S=2/6)
- 18 SB5345-87

- 19 SB5345-67
- 20 SB5345-56
- 21 SB5345-9
- 22 SB5345-12
- 23 SB5345-22
- 24 SB5345-23
- 25 SB5345-26
- 26 SB5345-32
- 27 SB5345-33





1



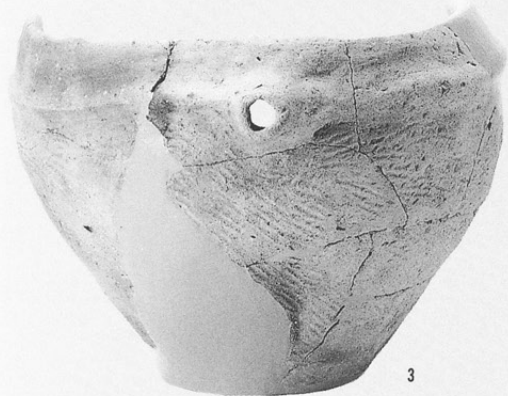
1



2



2



3



4

- 1 SB5346-1
- 2 SB5346-2

- 1 SB5348-1
- 2 SB5348-9
- 3 SB5348-7
- 4 SB5348-12

5 SB5348-6



5

1 SB5350-1

2 SB5350-7

3 SB5350-16

4 SB5350-23



1

2

3

4

5 SB5350-6

6 SB5350-25

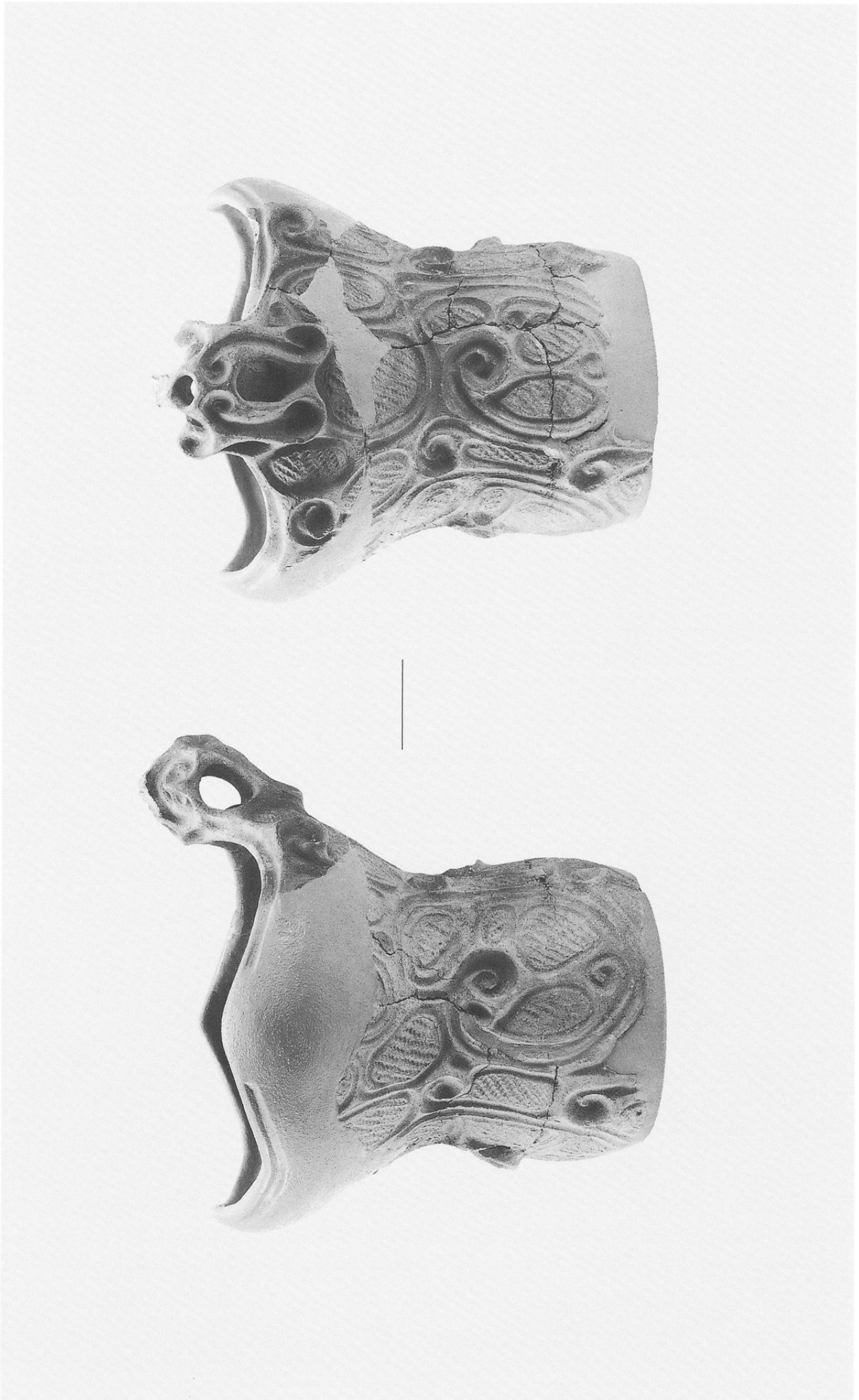


5



6

7 SB5350-9





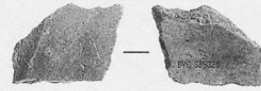
8



9



10



11

- 8 SB5350-30
- 9 SB5350-39
- 10 SB5350-8
- 11 SB5350-38



1



2

- 1 SB5351-1
- 2 SB5351-2

3 SB5351-3

4 SB5351-4





5

- 5 SB5351-10
- 6 SB5351-11
- 7 SB5351-12



6



7

8 SB5351-16

9 SB5351-19



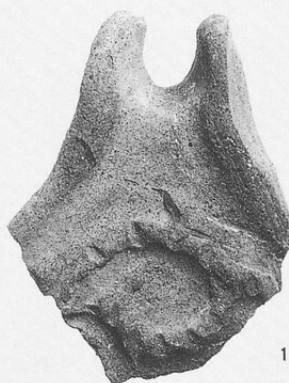
- 10 SB5351-21
- 11 SB5351-24
- 12 SB5351-9
- 13 SB5351-13
- 14 SB5351-14



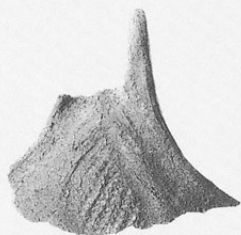
10



11



12



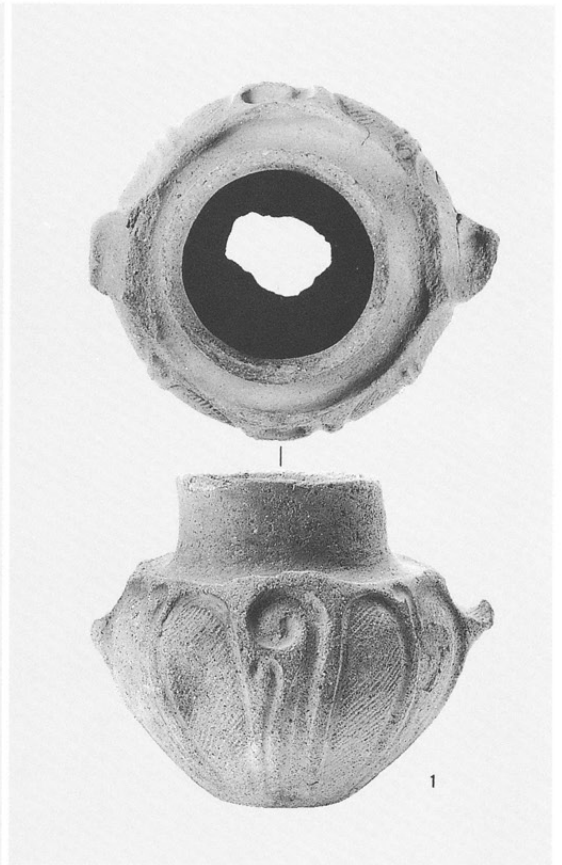
13



14

左：1 SB5352-1

右：1 SB5353-1

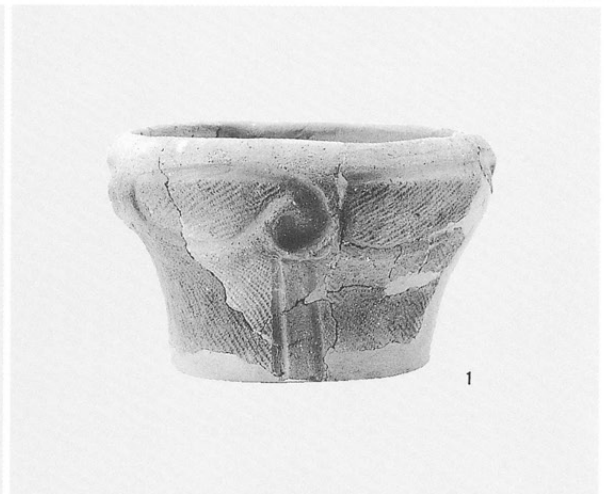


左：1 SB6701-1

2 SB6701-6

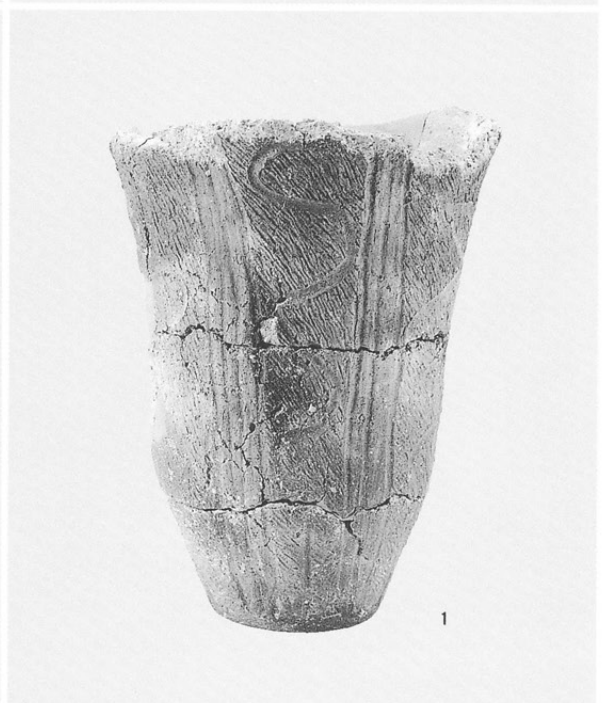
3 SB6701-7

右：1 SB6702-2

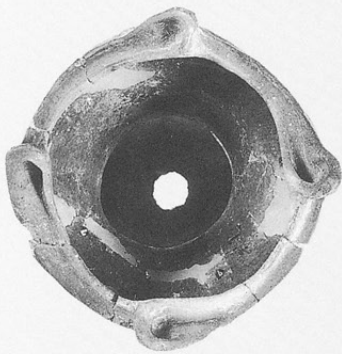
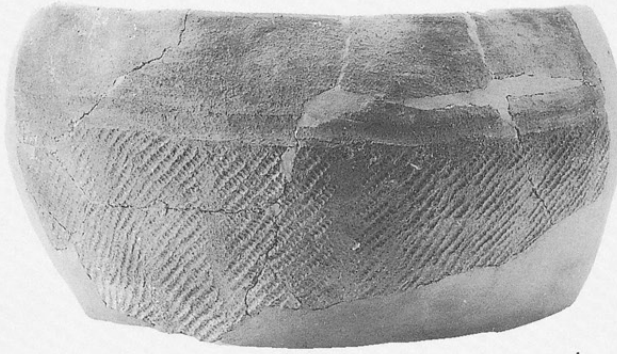


左：1 SB6703-1

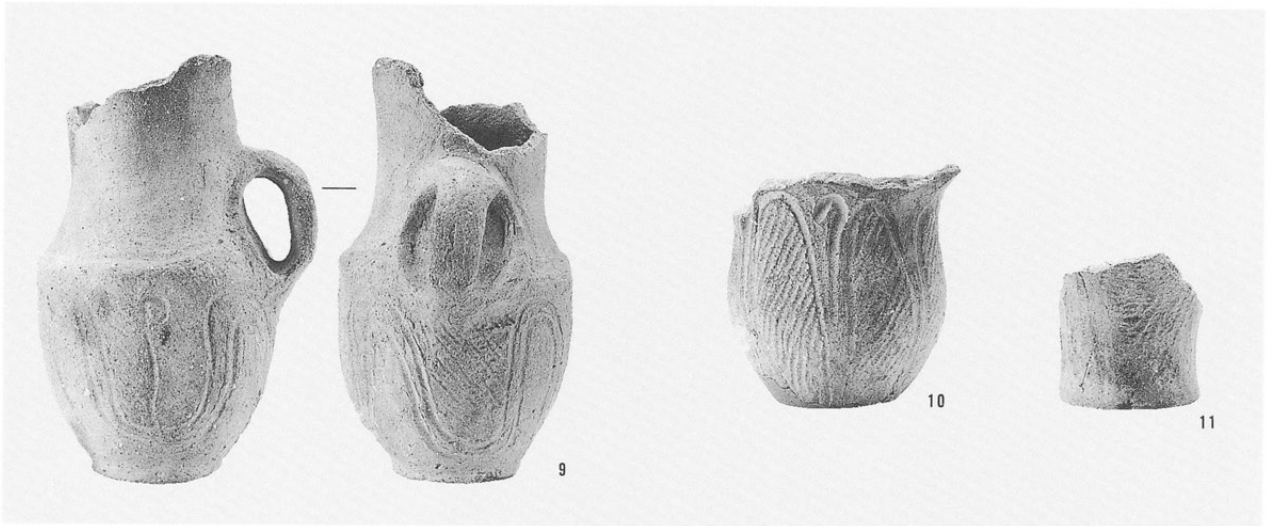
右：1 SB9001-1



- 2-1 SB9001-2-1
- 2-2 SB9001-2-2
- 3 SB9001-6
- 4 SB9001-7
- 5 SB9001-8
- 6 SB9001-11
- 7 SB9001-13
- 8 SB9001-15



- 9 SB9001-24
- 10 SB9001-31
- 11 SB9001-33



- 1 SB9003-1
- 2 SB9003-4
- 3 SB9003-6
- 4 SB9003-7
- 5 SB9003-13
- 6 SB9003-18





1



2

1 SB9004-1
2 SB9004-8

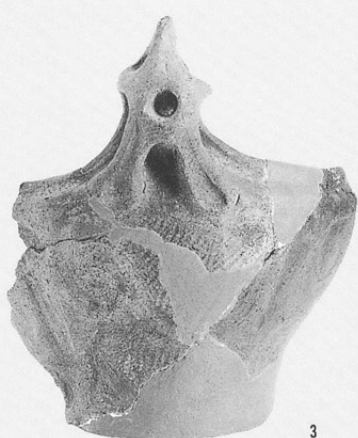


1



2

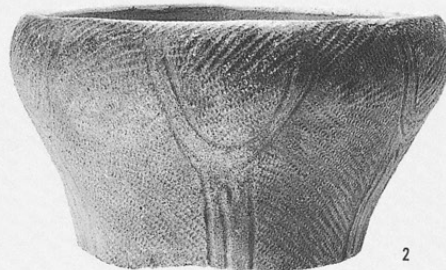
1 SB9005-1
2 SB9005-2
3 SB9005-3



3



1



2

1 SB9006-1
2 SB9006-2

- 1 SB9007-4
- 2 SB9007-5
- 3 SB9007-6
- 4 SB9007-7

