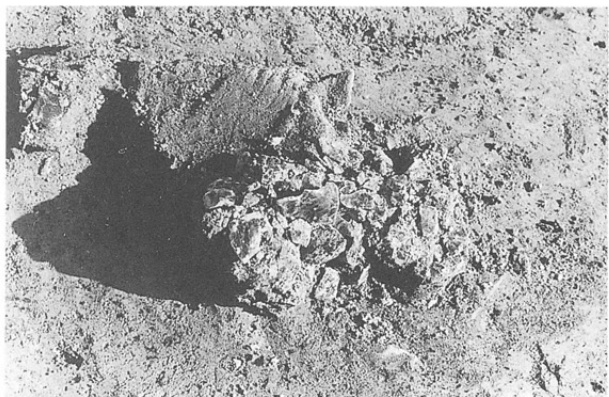
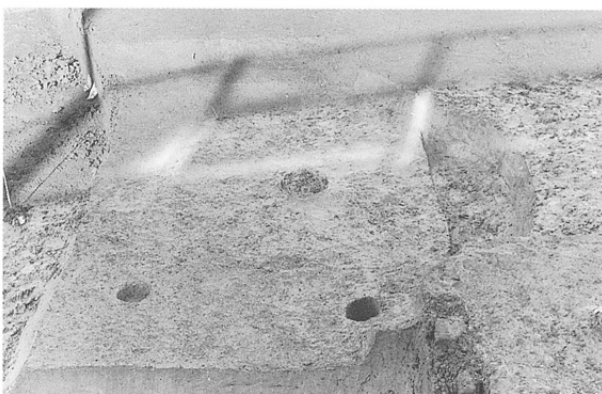




左：SQ7003全景
右：SQ7003
遺物出土状況
(SB7502上)



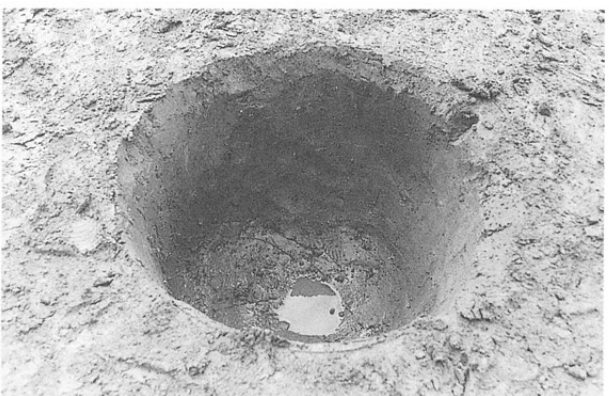
左：SQ7003内
黒曜石剥片集中
右：SQ7003内
円礫出土状況



左：I N23区出土獣骨
XIII層検出遺構
中期中葉
屋代遺跡群
⑤・⑥区
右：SB6801



左：SB6801炉体土器
右：SK6801断面



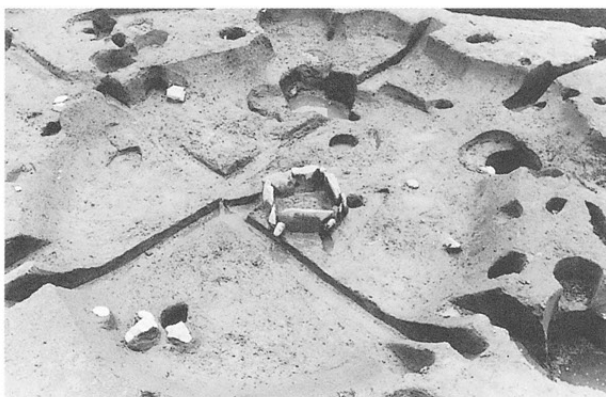
左：SK6802
右：SF7012
(XIII-1層検出)

XII - 2層
検出遺構
中期後葉
屋代遺跡群
④・⑤・⑥区

⑤b区全景

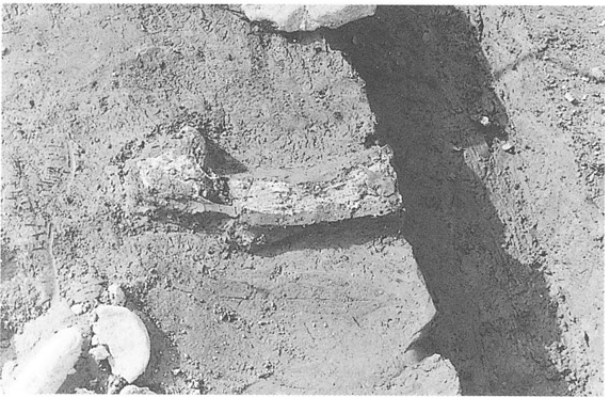


左：SB5311
右：SB5311
炉上焼土

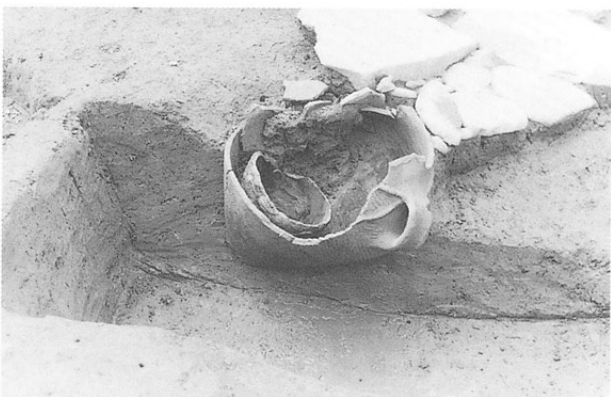




左：SB5312
埋甕
右：SB5312
1層下部遺物出土
状況



左：SB5312
床面鹿角
右：SB5313a



左：SB5314
右：SB5314
敷石・埋甕



左：SB5316
右：SB5316
柄部埋甕



右：SB5316
埋甕底部植物遺体

左：SB5317
右：SB5317
炉



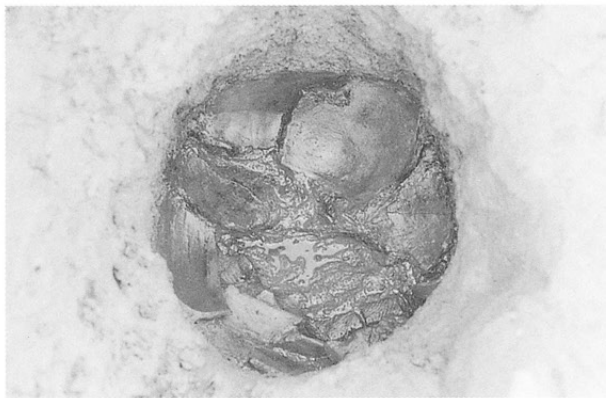
左：SB5318
炉周辺敷石
右：SB5319



左：SB5319
連結部埋塞

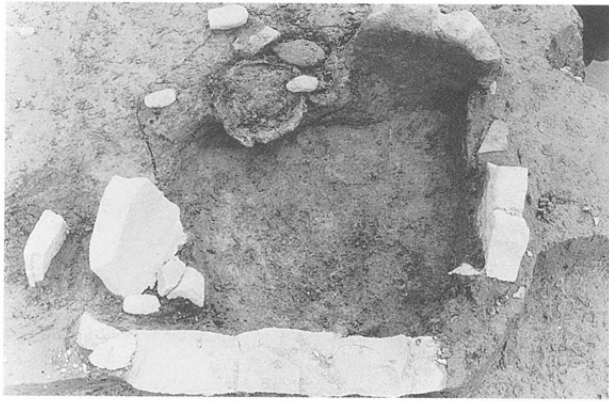


左：SB5319
土坑炉内敷設土器
右：SB5319
土坑炉底粘土



左：SB5319内人骨
右：SB5321

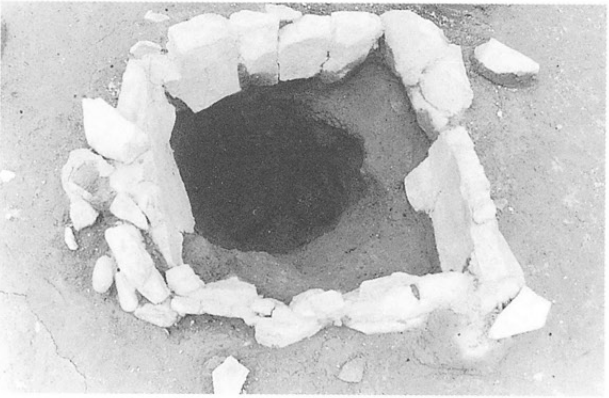




左：SB5321
炉
右：SB5322



左：SB5323
右：SB5324



左：SB5324
石囲炉と土坑炉



SB5325

左：SB5325
敷石と挟石
右：SB5325
柄部埋襲



左：SB5325
掘方
右：SB5328
炉封鎖状況



左：SB5332
右：SB5332
奥壁部土壇

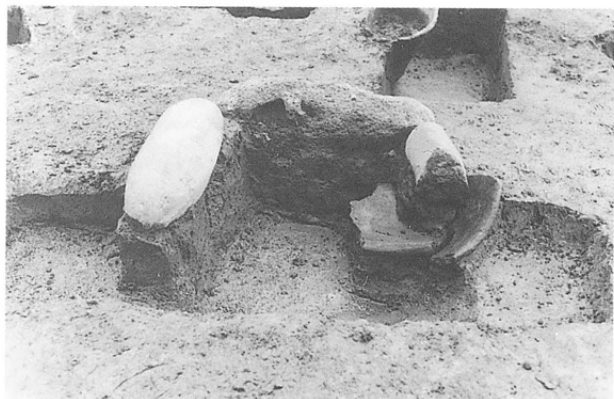


左：SB5332
埋襲
右：SB5335

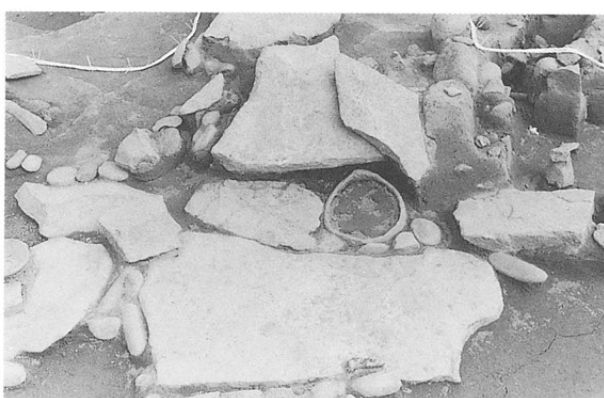
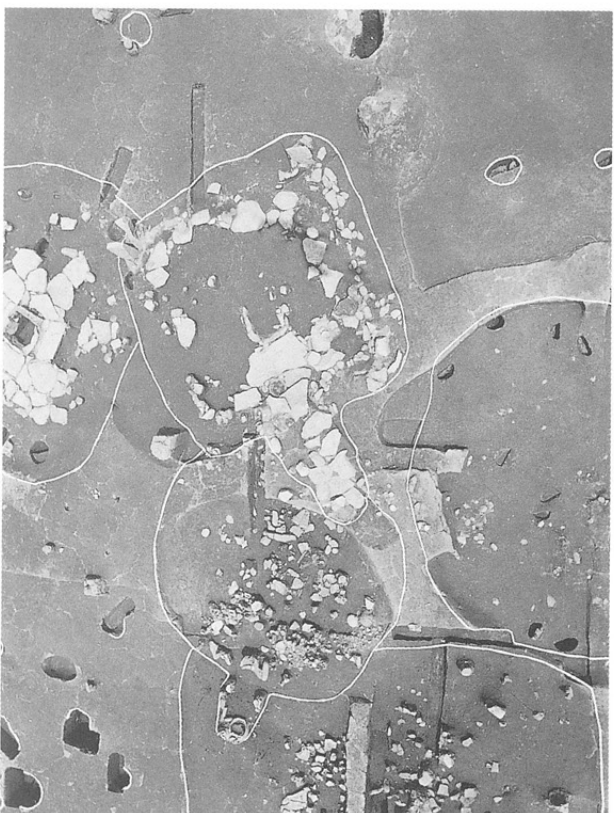


左：SB5335
壁焼土
右：SB5336





左：SB5336
炉
右：SB5337



左：SB5337
SB5338
右：SB5337
連結部



右：SB5337
北東隅立石



左：SB5337
炉
右：SB5338



左：SB5338
人骨
右：SB5340

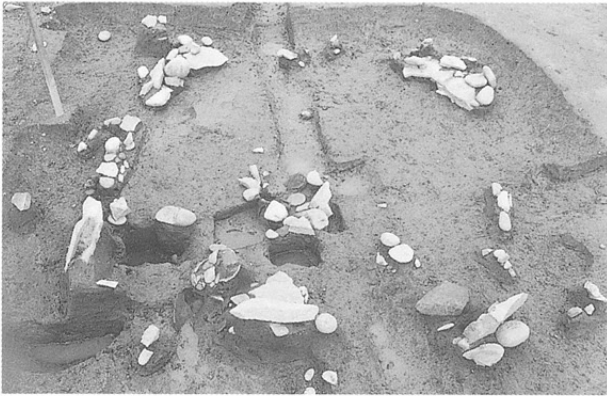
左：SB5340
獣骨
右：SB5340
イノシシ頭蓋骨



左：SB5340
炉
右：SB5341



左：SB5342
右：SB5342
炉廃絶状況



左：SB5344
埋甕
右：SB5344
SB5346



左：SB5346
入口敷石
右：SB5346
埋甕

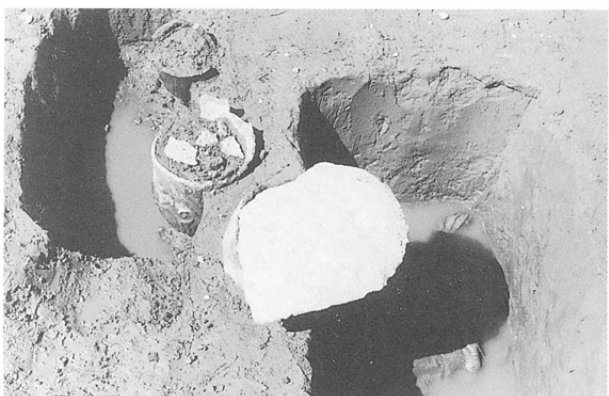




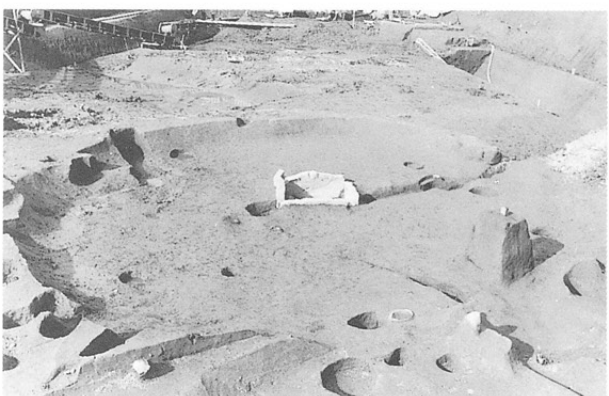
左：SB5345
炭化材出土状況
右：SB5345
壁板材



左：SB5345
西側炭化材
右：SB5345
炉



左：SB5345
埋甕配列
右：SB5345
埋甕 2・3



左：SB5350
右：SB5350
埋甕 1・7



左：SB5350
床下土器出土状況
右：SB5351

左：SB5351
右：SB5351
埋甕3・4



左：SB5352
右：SB5353
炉土器出土状況



左：SB6702
SB6703
右：㊸ b区遠景

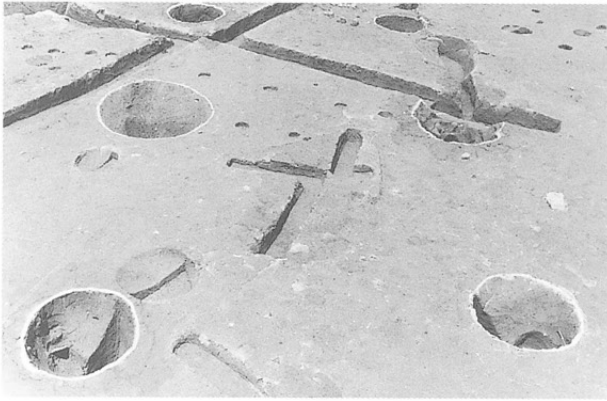


左：SB9001
右：SB9002~SB9005

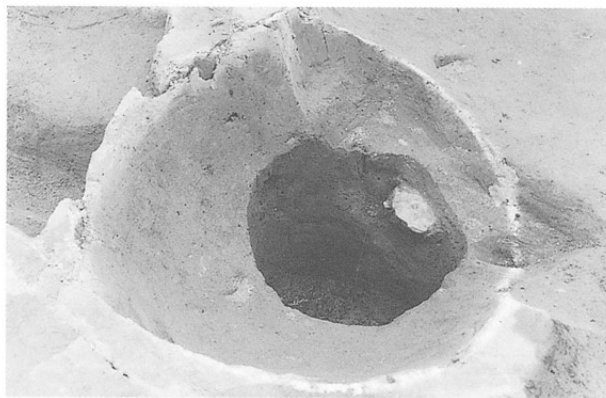


左：SB9007
右：㊹ b区
ミーティング風景





左：ST5101
右：ST5101P6
ミニチュア土器他
出土状況



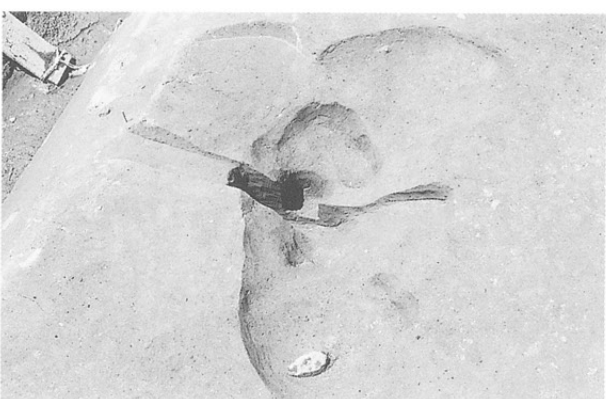
左：ST5102
右：ST5102内P4



左：ST5103周辺
右：ST5103内SF5130

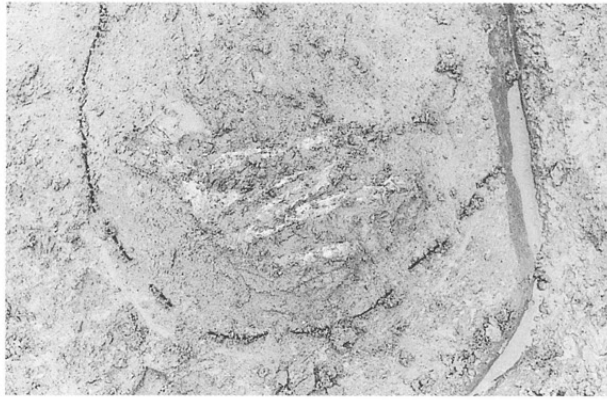


左：ST5103内
SK5519
右：ST5109内SK5595
遺物出土状況

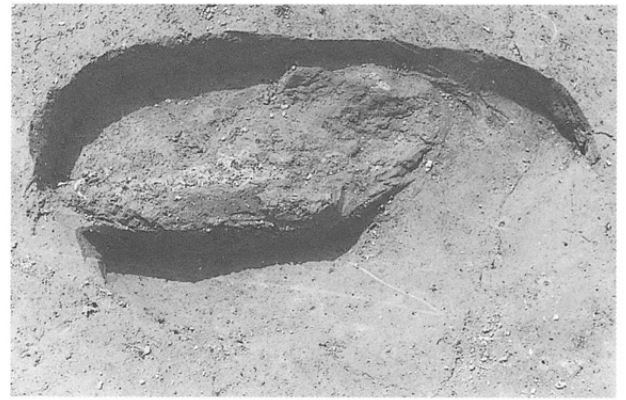


左：SK5595内埋設土器
(ST5109-4)
右：ST5124P2

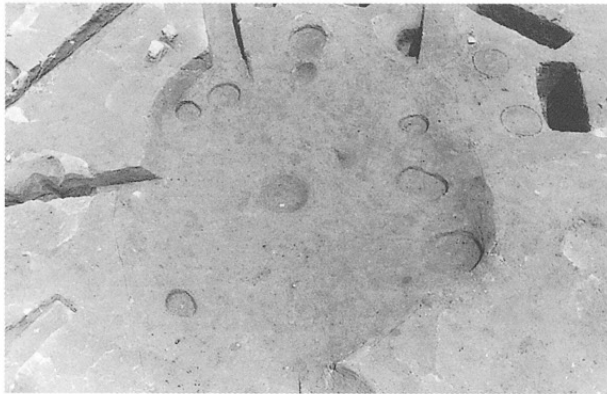
左：SK5589
人骨出土状況



右：SK5602
イノシシ骨出土状況



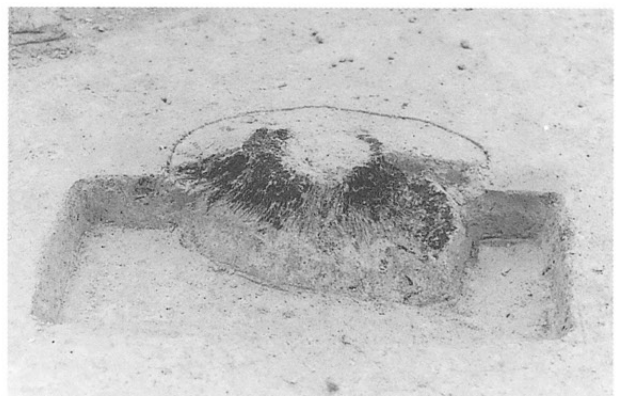
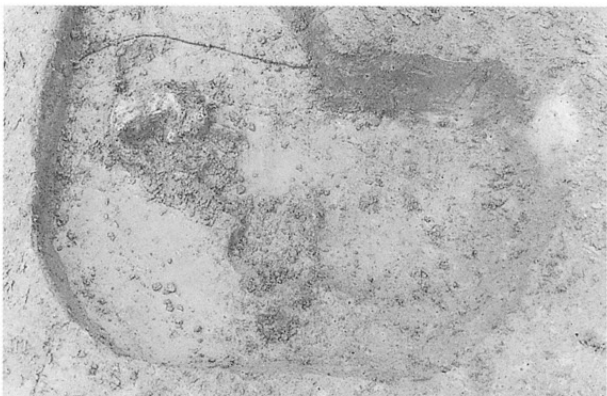
左：SK5629
右：SK5695



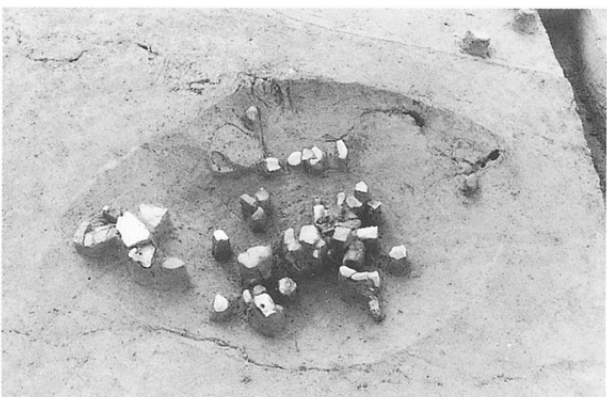
左：SK5790人骨
右：SK5823人骨



左：SK5833人骨
右：SK5660立木



左：SK9070
右：SK9071





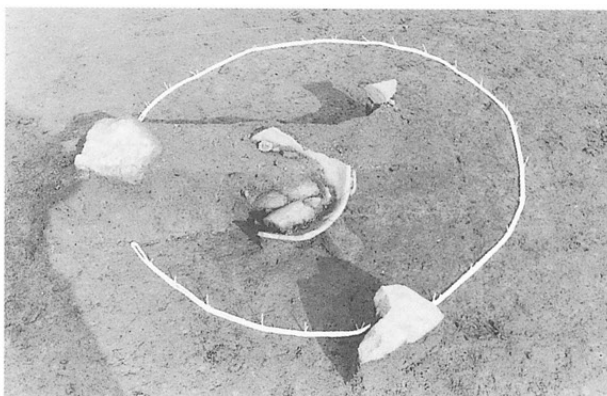
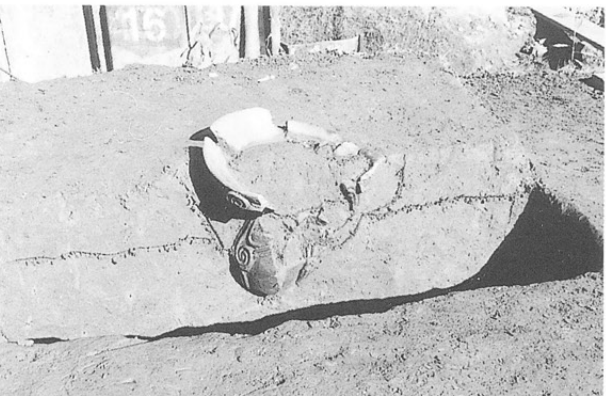
左：SF5108
右：SF5148



左：SF5166集石炉
右：SF5166
焼骨出土状況



左：SF5176
右：SF5177



左：SQ4803a
右：SQ4804

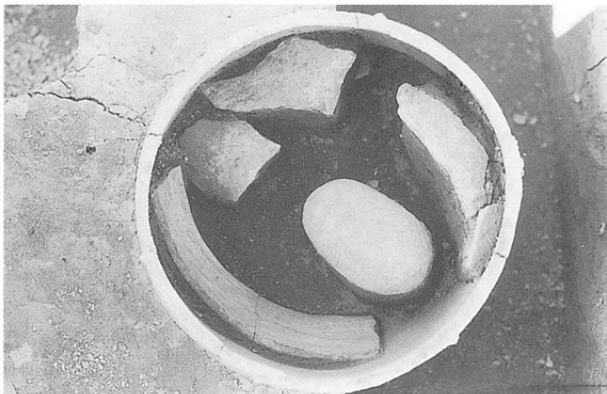


左：SQ5535
右：SQ5542

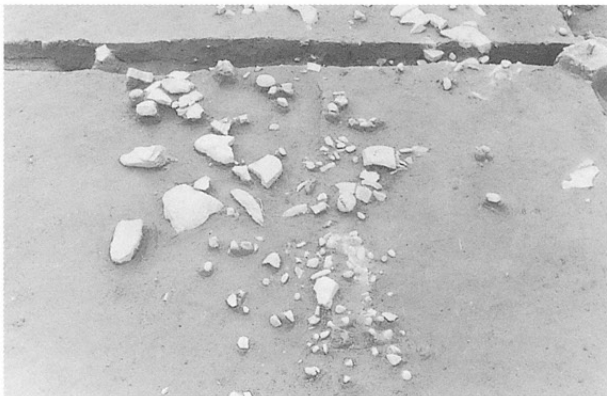
SQ5531・5532・5534a
屋外埋甕とSQ5537



左：SQ5531
右：SQ5534a

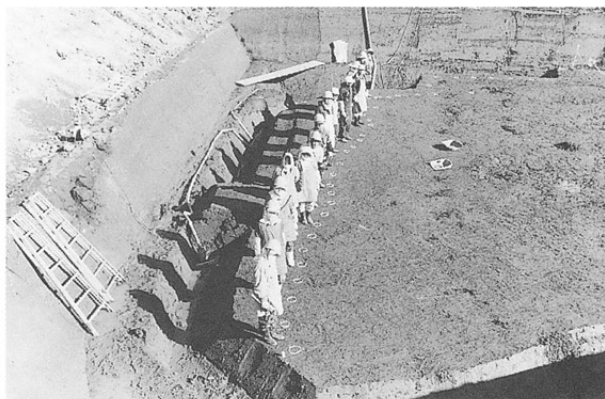
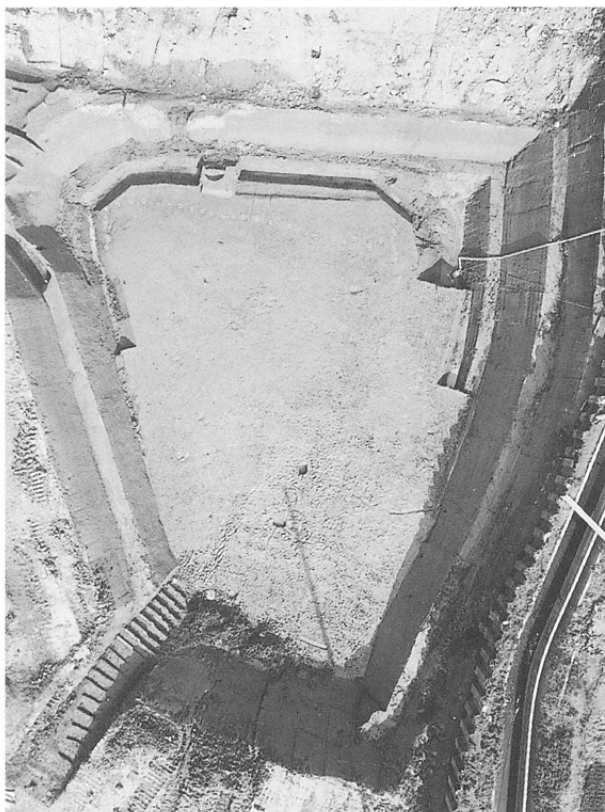


左：SH5501
右：SX5502

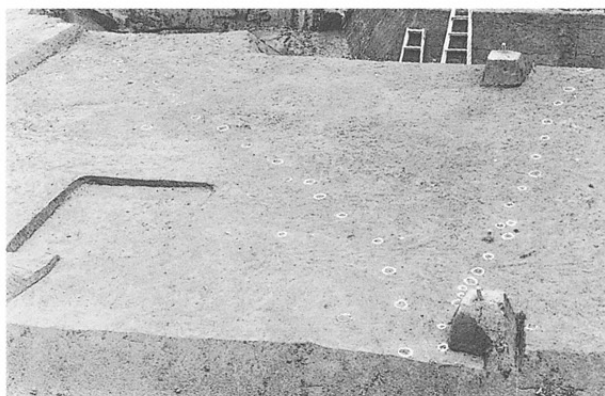


左：SX5506
右：狭い調査区の調査
(④d区)

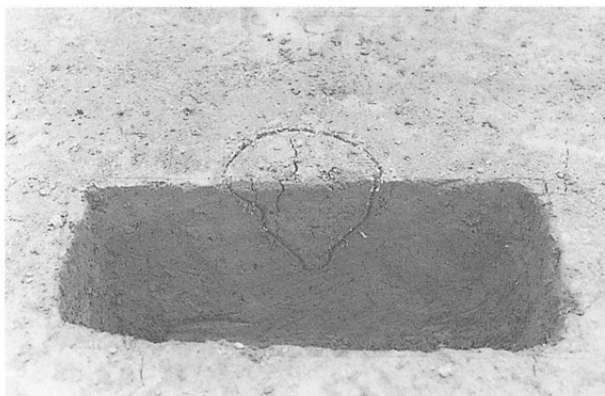




左：④a区杭列群
右：SA4514とともに



右：SA4511
SA4512-2



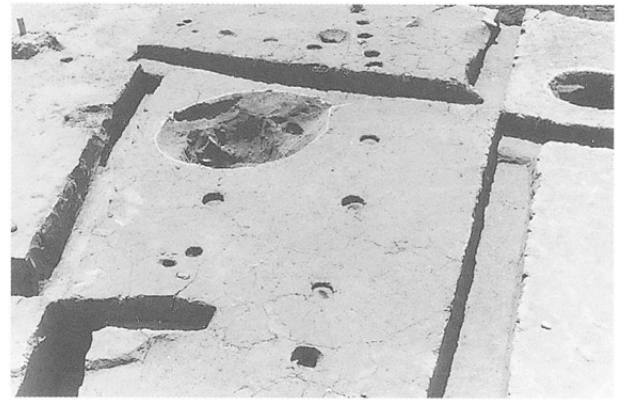
左：SA4511P4
右：SA4512P44



⑤a区南SA群
SA6716~SA6723

左：SA6713

右：SA5101



右：⑤b区IS13区

ピット群



左：SA9001

右：SA9002



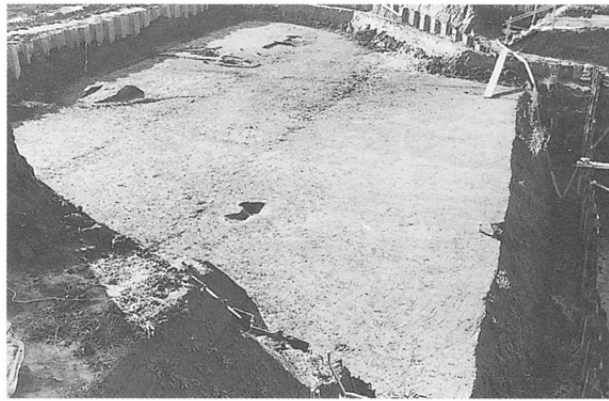
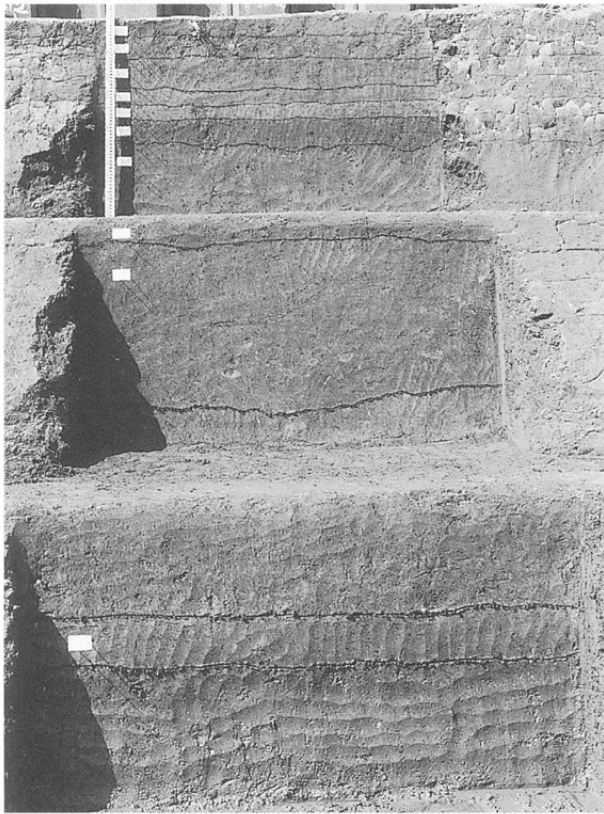
XII-2層包含層

⑤b区南

遺物出土状況

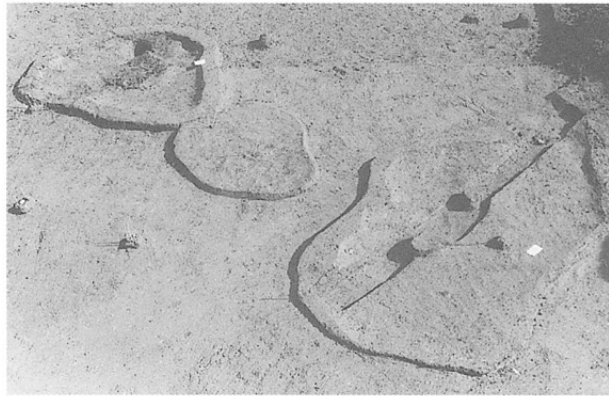
(1mグリッド釘含む)



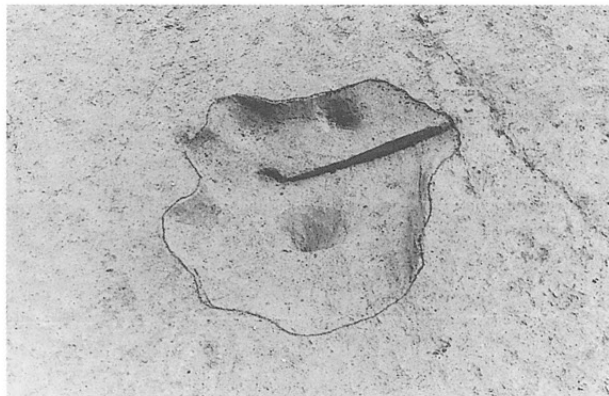


左：更埴条里遺跡
I地区北壁基本土層
XII-1層検出遺構
後期前葉
屋代遺跡群
④・⑥区

右：④a区XII-1層面
完掘状況



右：SF4804
SF4805
SF4807

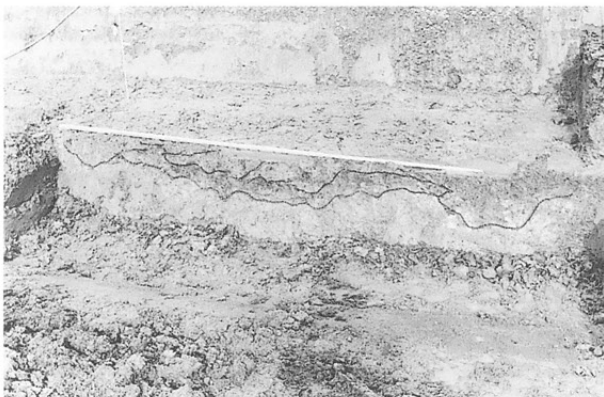


左：⑥a区XII-1層面
完掘状況
右：SF7005

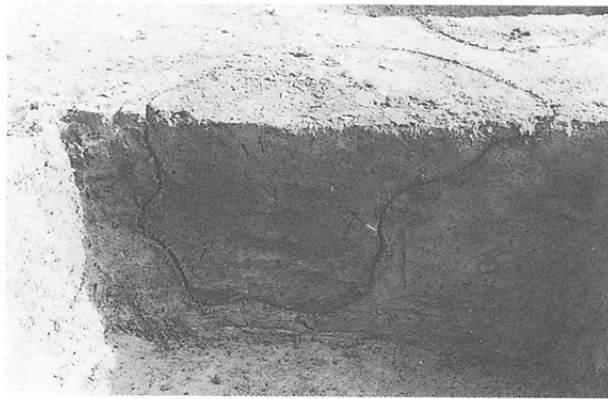
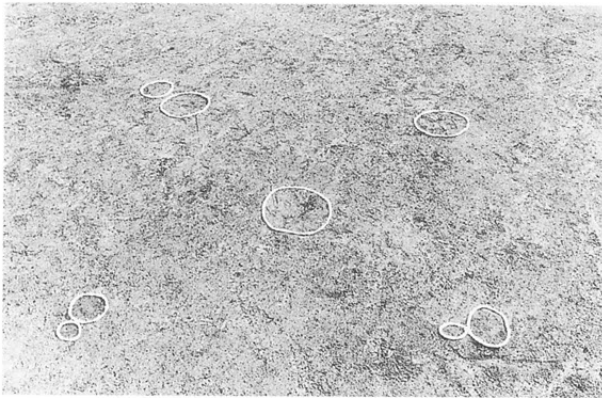


X層検出遺構
後期前葉
屋代遺跡群
④区

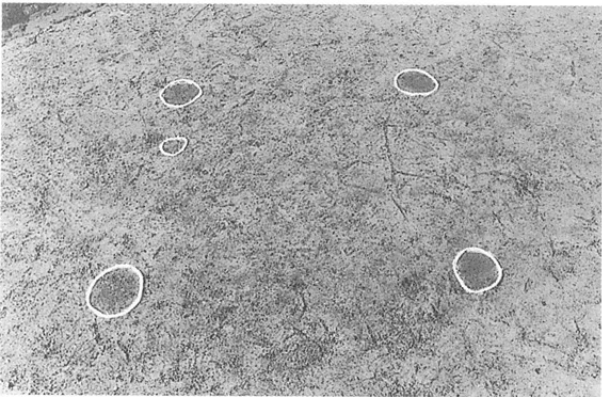
左：SK4784
SK4785
更埴条里遺跡
J区



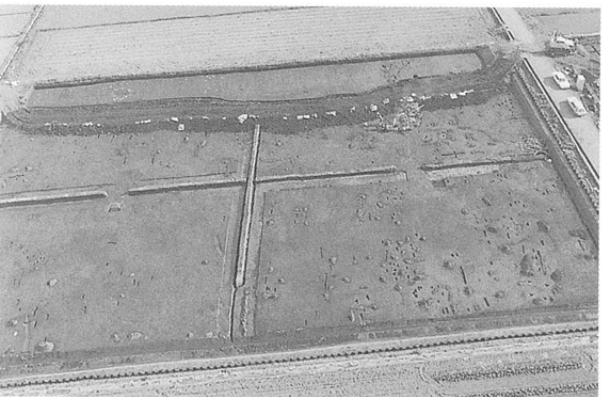
右：SF1021
屋代遺跡群
④区
左：SF4503
更埴条里遺跡
J区
右：SQ1008



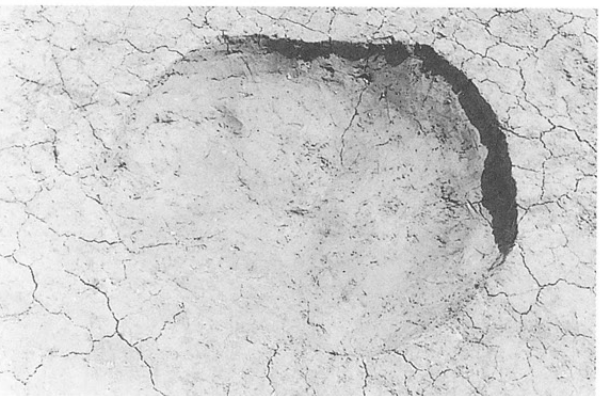
更埴条里遺跡
A・C・E・I・K区
左：ST402
右：ST402P3



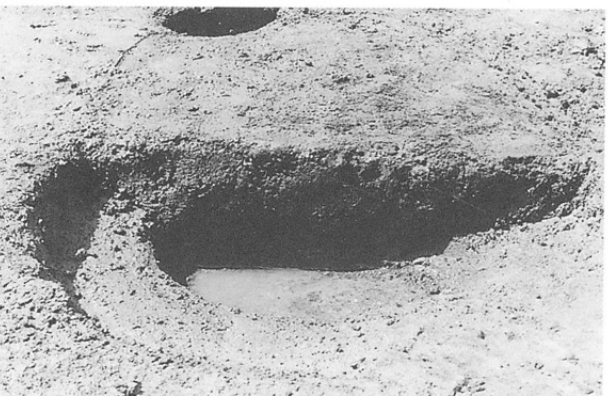
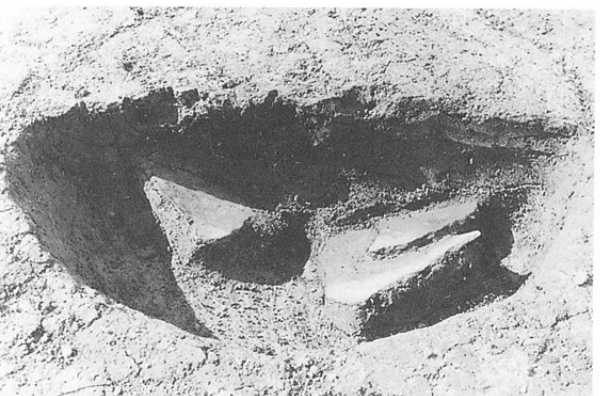
左：ST406
右：ST406P3



左：F区ピット群
右：ST501P4



左：SK31
右：SK36



左：SK2016
右：SK2028

左：更埴条里遺跡
J地区西壁基本土層

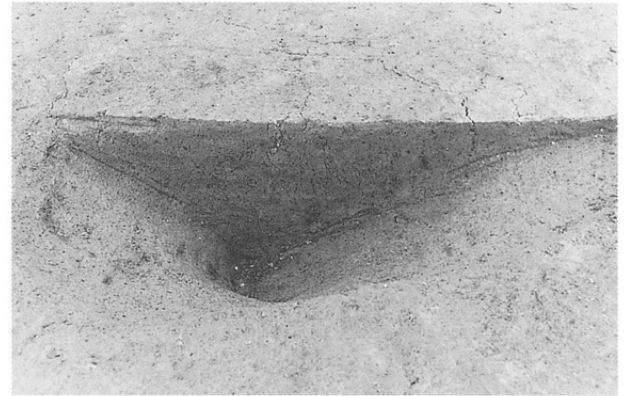
Ⅸ層検出遺構

後期中葉

屋代遺跡群

⑤区

右：SF5102



更埴条里遺跡

I区

右：SX824

Ⅸ層上面

検出遺構

晩期前半



更埴条里遺跡

Ⅸ層上面検出状況

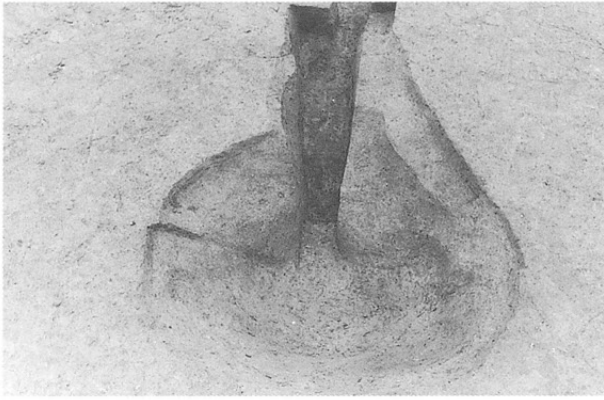
南（森將軍塚古墳側）

から北（屋代遺跡群側）

を望む

左：SK9900

右：SK9901



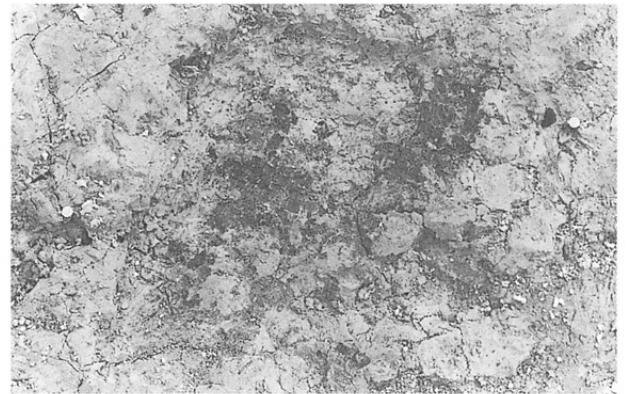
左：SF708

右：SF902



左：SQ03

右：SQ04



左：SQ401

右：SX807



Ⅷ層検出遺構

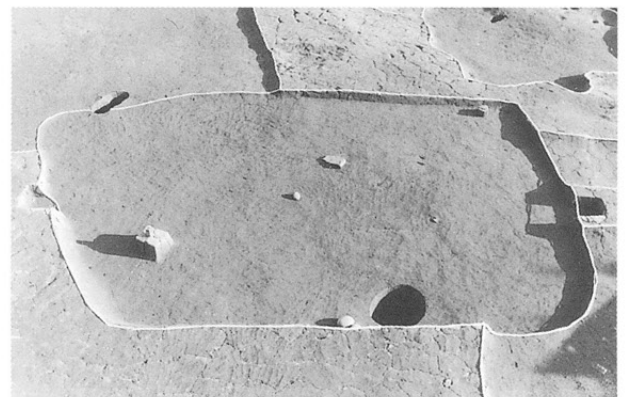
晩期前半

屋代遺跡群

⑤区

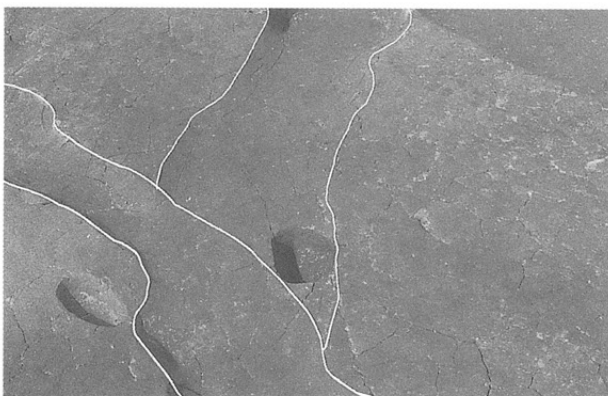
左：SB6603

右：SB6607

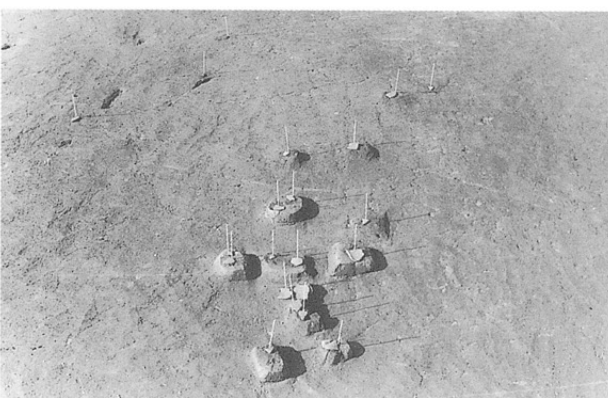




左：SB6608
右：⑤a区Ⅷ層
調査風景



左：SD6603
SD6607
右：SD6603・SD6607
切り合い部分



左：Ⅷ層土器出土状況
右：SQ1005



左：I地区東壁
▲部分Ⅷ層の高まり
右：I地区土層転写作業

前期の石器

1 XVIII層

前期前半の土器

1 混入
2 混入

前期後半の土器

3 XVI層-1
4 XVI層-3
5 XVI層-4
6 混入-7

中期前葉の土器
XV層

1 包含層-5
2 SK9124-1
3 包含層-2
4 包含層-3
5 包含層-4
6 包含層-10
7 包含層-7

中期前葉の石器
XV層

1 SK6916-1
2 SK6916-2
3 包含層-3
4 包含層-5

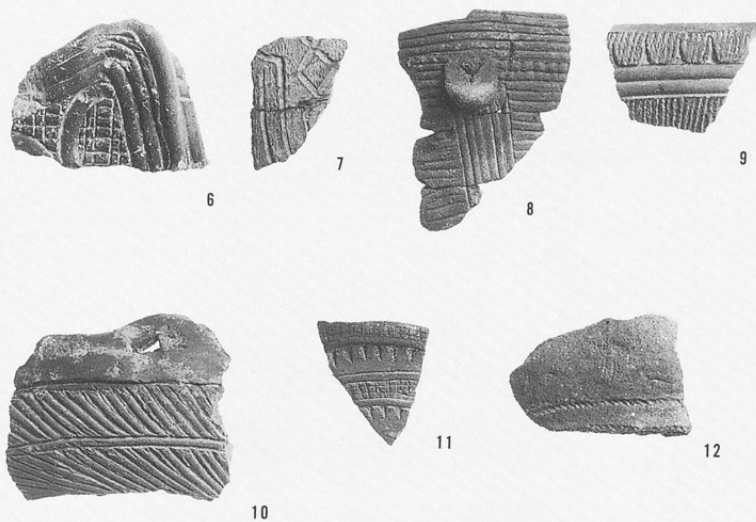
中期前葉の土器
XIV-3層

1 包含層-5
2 包含層-3
3 包含層-4
4 包含層-7

XIV-2層

1 SF9033-1
2 SK9107-1
3 SK9111-1
4 SK9113-2





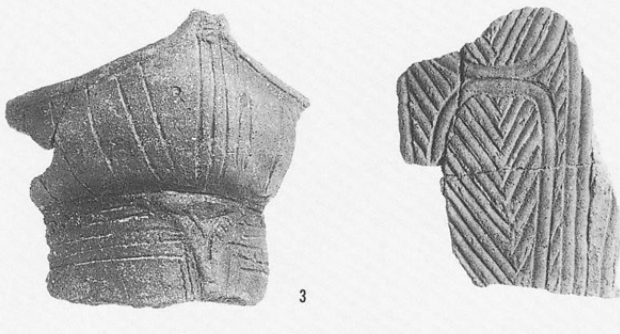
XIV - 2 層

- 5 包含層-12
- 6 包含層-3
- 7 包含層-4
- 8 包含層-5
- 9 包含層-6
- 10 包含層-7
- 11 包含層-8
- 12 包含層-14

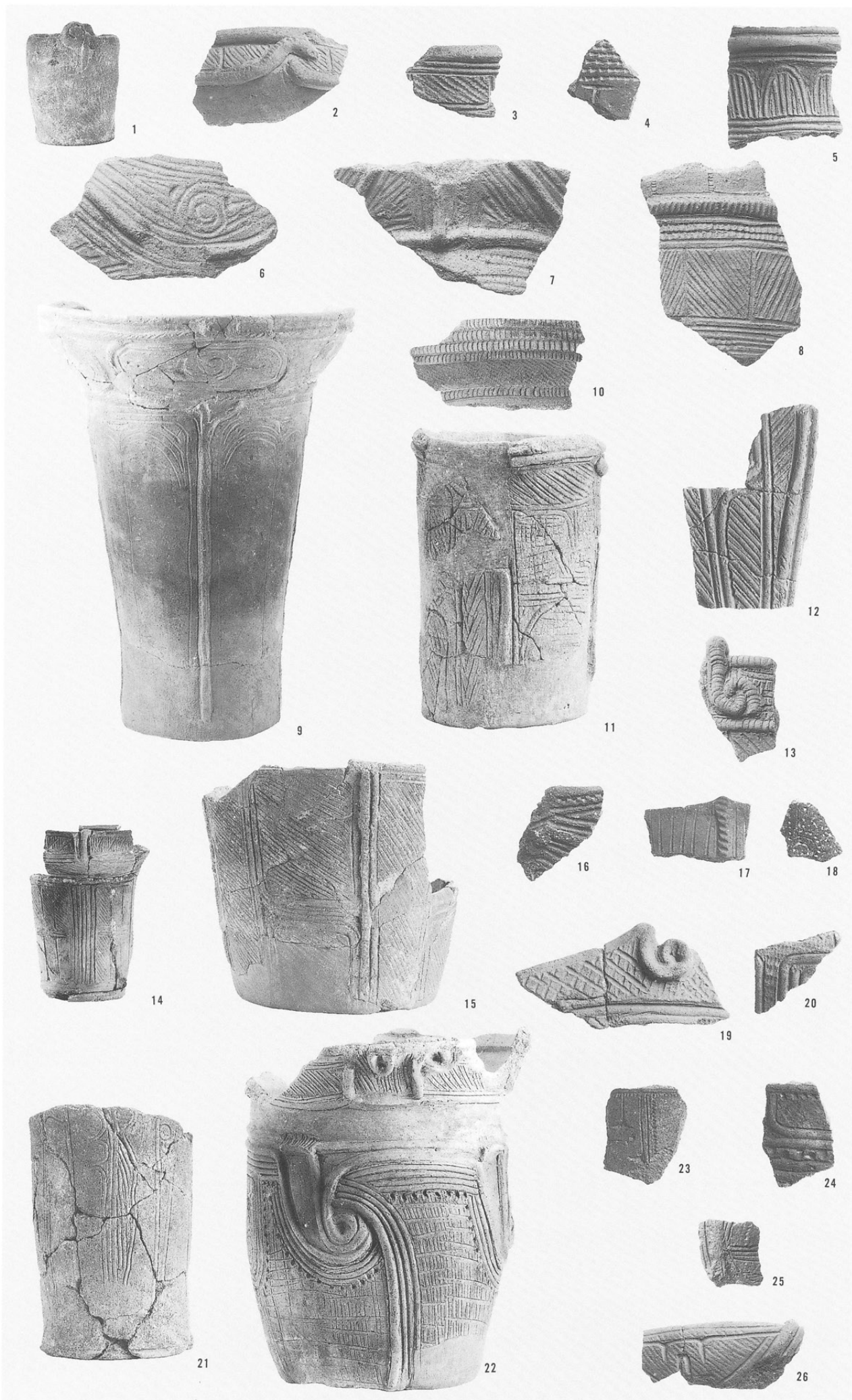


XIV - 1 層
竪穴住居

- 1 SB5401-1
- 2 SB5401-2
- 3 SB5401-14
- 4 SB5401-5
- 5 SB5401-6
- 6 SB5401-4
- 7 SB5401-7
- 8 SB5401-8
- 9 SB5401-15
- 10 SB5401-16
- 11 SB5401-17



- 1 SB5402-3
- 2 SB5402-9
- 3 SB5402-1
- 4 SB5402-2
- 5 SB5402-5
- 6 SB5402-6
- 7 SB5402-7
- 8 SB5402-12
- 9 SB5404-1
- 10 SB5407-2
- 11 SB5407-3
- 12 SB5407-4
- 13 SB5407-5
- 14 SB5408-2
- 15 SB5408-10
- 16 SB5408-3
- 17 SB5408-5
- 18 SB5408-9
- 19 SB5408-11
- 20 SB5408-13
- 21 SB5412b-1
- 22 SB5412a-1
- 23 SB5412a-6
- 24 SB5412a-8
- 25 SB5412a-10
- 26 SB5412a-11

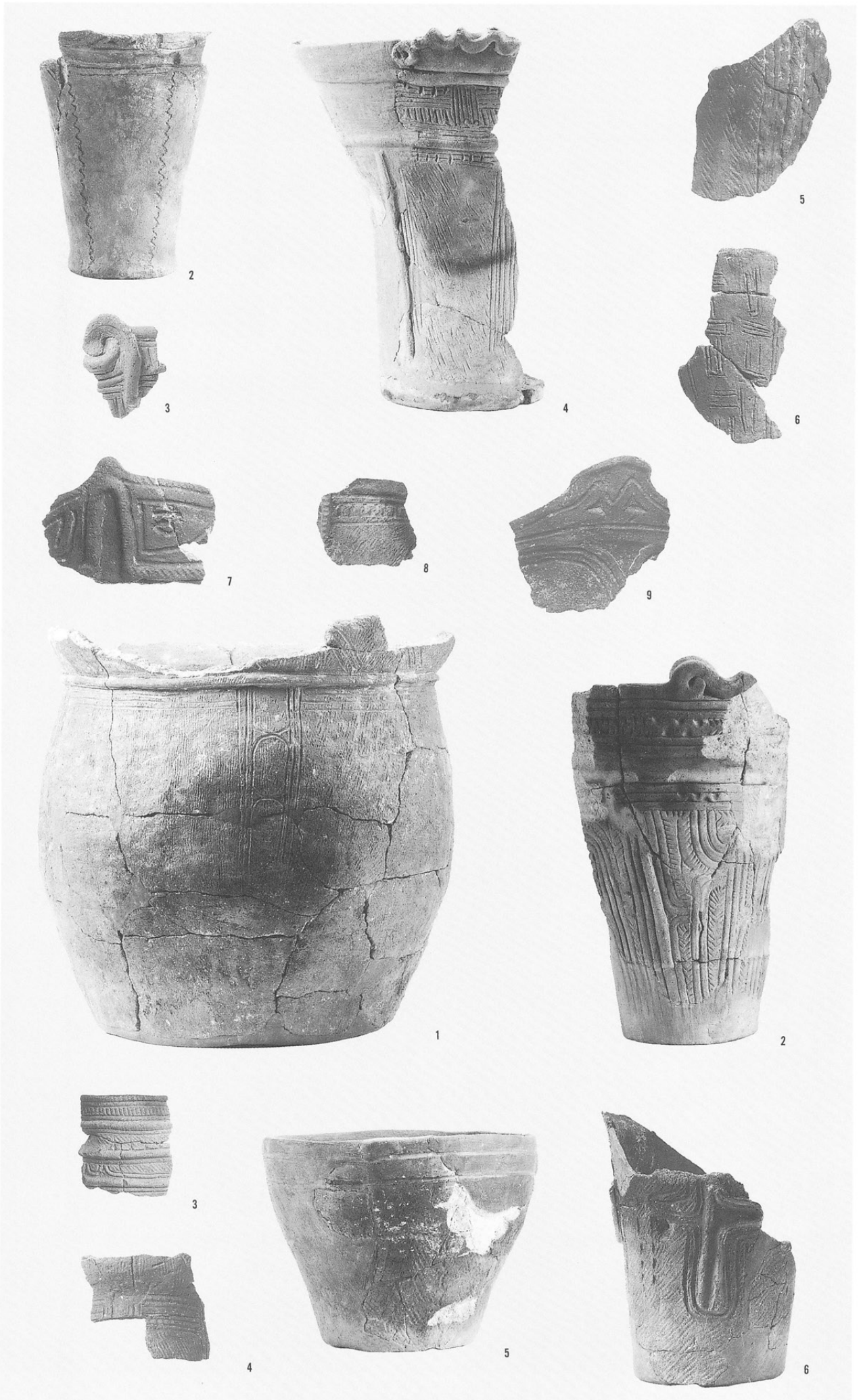




- 1 SB7501-2
- 2 SB7502-1
- 3 SB7502-20
- 4 SB7502-22
- 5 SB7502-19
- 6 SB7502-4
- 7 SB7502-5
- 8 SB7502-7
- 9 SB7502-8
- 10 SB7502-9
- 11 SB7502-10
- 12 SB7502-13
- 13 SB7502-14
- 14 SB7502-15
- 15 SB9008-1
- 16 SB9008-1

- 1 SB9009-1

- 2 SB9009-2
- 3 SB9009-3
- 4 SB9009-7
- 5 SB9009-6
- 6 SB9009-10
- 7 SB9009-11
- 8 SB9009-16
- 9 SB9009-20



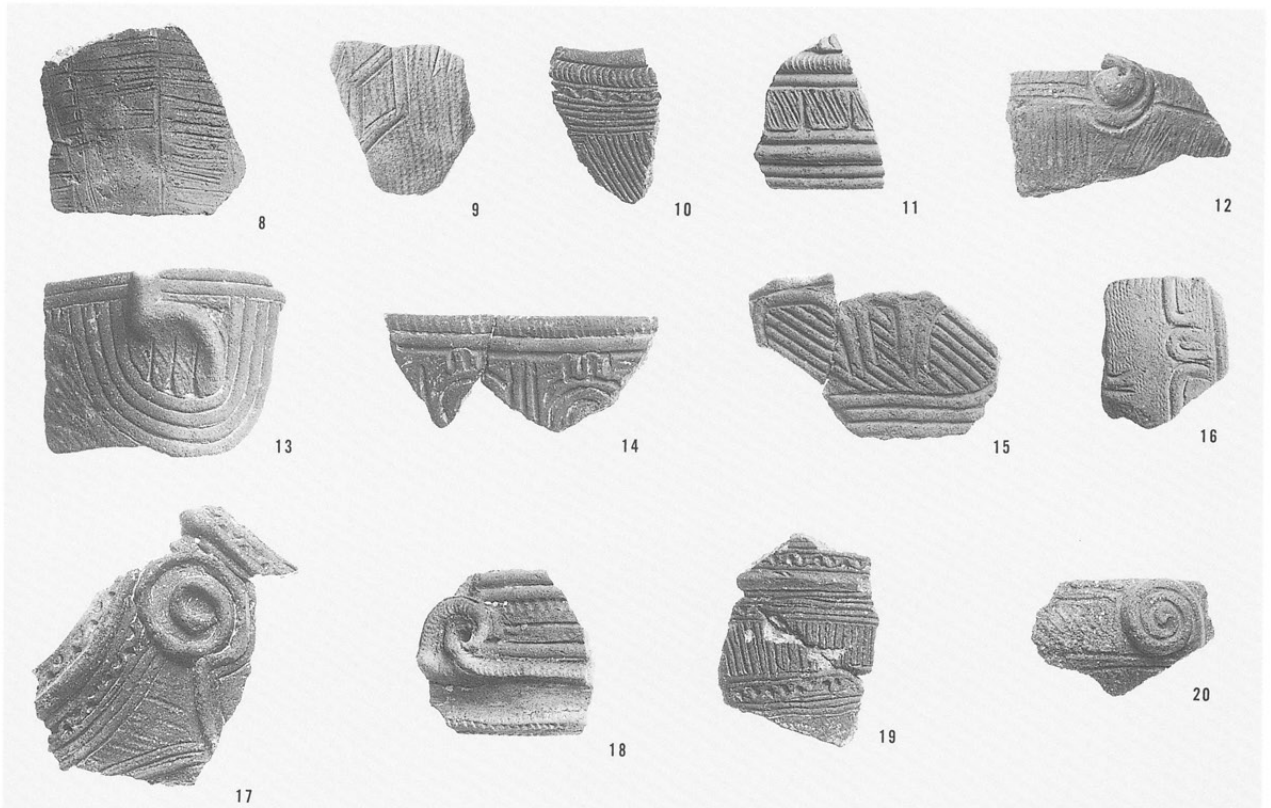
- 1 SB9010-1
- 2 SB9010-33
- 3 SB9010-7
- 4 SB9010-37
- 5 SB9010-39
- 6 SB9010-42



- 7 SB9010-41
- 8 SB9010-44
- 9 SB9010-55
- 10 SB9010-2
- 11 SB9010-3
- 12 SB9010-5
- 13 SB9010-6
- 14 SB9010-8
- 15 SB9010-16
- 16 SB9010-17
- 17 SB9010-18
- 18 SB9010-21
- 19 SB9010-45

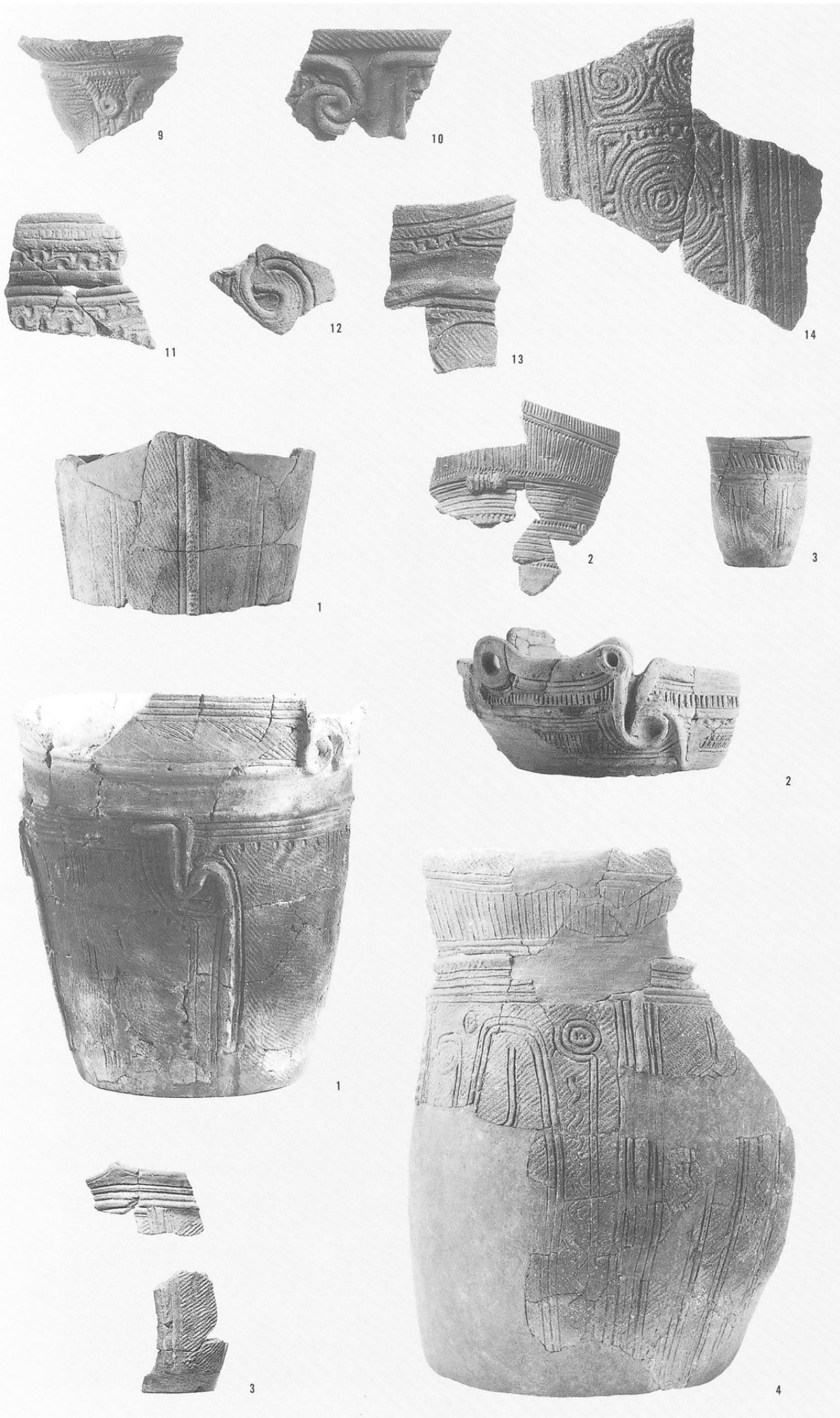
- 1 SB9011-31
- 2 SB9011-4
- 3 SB9011-30
- 4 SB9011-32
- 5 SB9011-33
- 6 SB9011-35
- 7 SB9011-39

- 8 SB9011-2
- 9 SB9011-5
- 10 SB9011-13
- 11 SB9011-14
- 12 SB9011-16
- 13 SB9011-24
- 14 SB9011-36
- 15 SB9011-42
- 16 SB9011-52
- 17 SB9011-54
- 18 SB9011-58
- 19 SB9011-59
- 20 SB9011-67



- 1 SB9012-5
- 2 SB9012-3
- 3 SB9012-7
- 4 SB9012-6
- 5 SB9012-9
- 6 SB9012-10
- 7 SB9012-15
- 8 SB9012-16





- 9 SB9012-35
- 10 SB9012-27
- 11 SB9012-18
- 12 SB9012-31
- 13 SB9012-54
- 14 SB9012-24

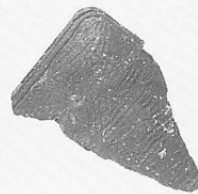
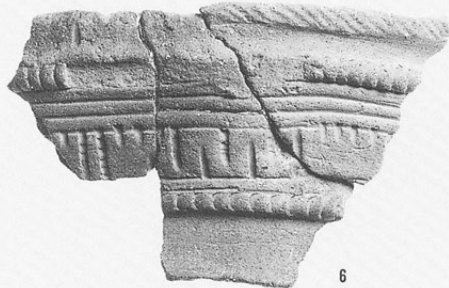
- 1 SB9014-1
- 2 SB9014-2
- 3 SB9014-7

- 1 SB9015-1
- 2 SB9015-22
- 3 SB9015-26
- 4 SB9015-29

- 5 SB9015-27
- 6 SB9015-30
- 7 SB9015-32
- 8 SB9015-33
- 9 SB9015-34
- 10 SB9015-35
- 11 SB9015-44
- 12 SB9015-15
- 13 SB9015-28



- 1 SB9016-1
- 2 SB9016-2



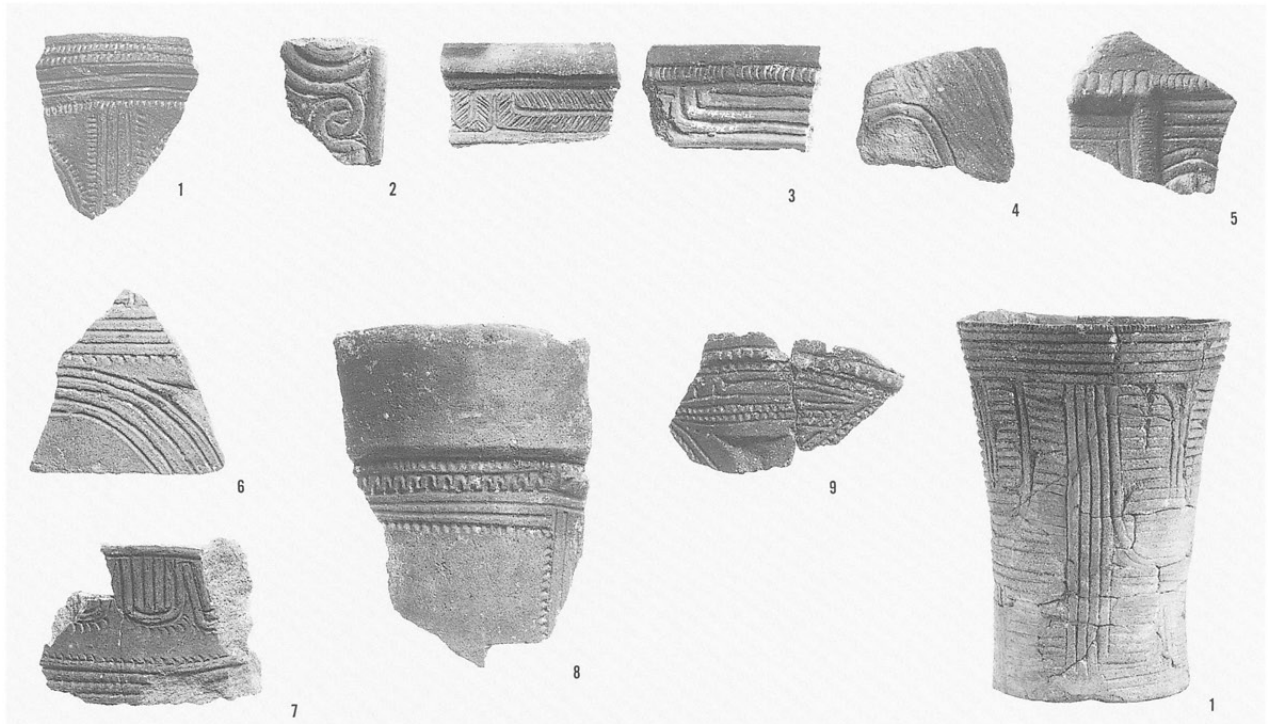
- 3 SB9016-13
- 4 SB9016-20
- 5 SB9016-23
- 6 SB9016-6
- 7 SB9016-7
- 8 SB9016-5
- 9 SB9016-9
- 10 SB9016-11
- 11 SB9016-12
- 12 SB9016-14
- 13 SB9016-16
- 14 SB9016-17
- 15 SB9016-30
- 16 SB9016-64
- 17 SB9016-74

土坑

- 1 SK7664-1
- 2 SK7666-1
- 3 SK7668-2
- 4 SK7670-11
- 5 SK7670-12
- 6 SK7670-7

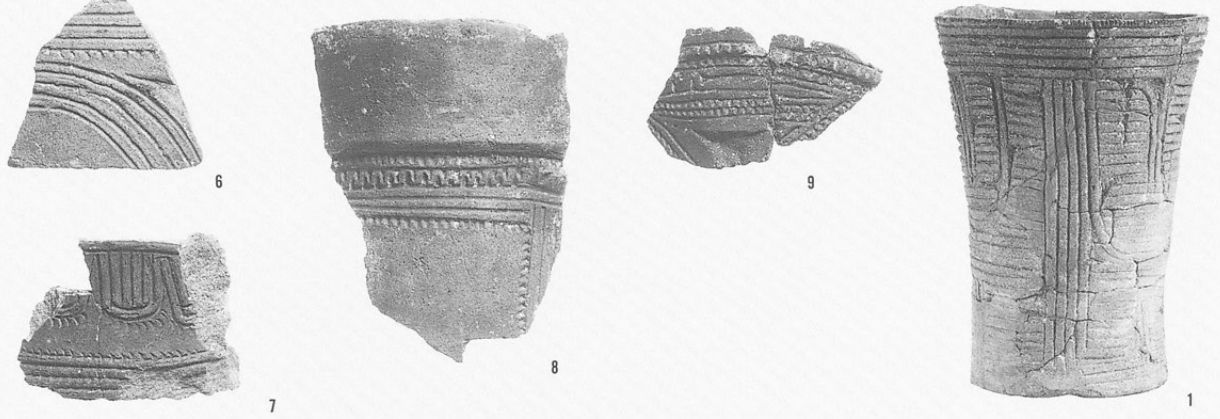
土坑

- 1 SK7676-1
- 2 SK7676-5
- 3 SK7676-9
- 4 SK9095-1
- 5 SK9095-2
- 6 SK9102-5
- 7 SK9104-1



焼土跡

- 8 SF7034-1
- 9 SF7038-1



遺物集中

- 1 SQ7003-6
- 2 SQ7003-12
- 3 SQ7003-35
- 4 SQ7003-36
- 5 SQ7003-42
- 6 SQ7003-52
- 7 SQ7003-62
- 8 SQ7003-61





9



10



11



12



13



14



15



16



17



18



19



20



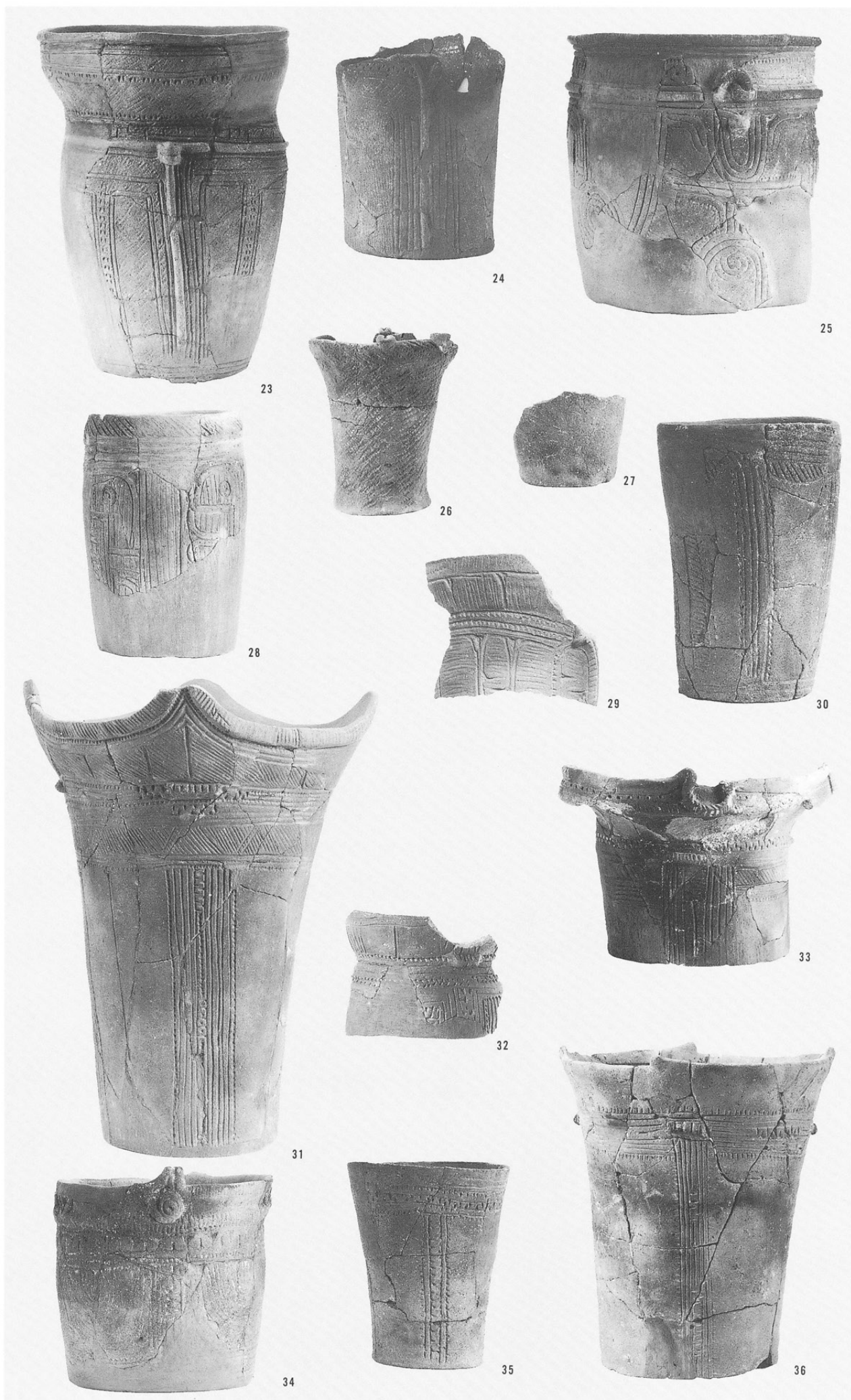
21



22

- 9 SQ7003-66
- 10 SQ7003-73
- 11 SQ7003-74
- 12 SQ7003-78
- 13 SQ7003-75
- 14 SQ7003-81
- 15 SQ7003-82
- 16 SQ7003-83
- 17 SQ7003-84
- 18 SQ7003-93
- 19 SQ7003-95
- 20 SQ7003-98
- 21 SQ7003-119
- 22 SQ7003-120

- 23 SQ7003-121
- 24 SQ7003-124
- 25 SQ7003-132
- 26 SQ7003-128
- 27 SQ7003-129
- 28 SQ7003-142
- 29 SQ7003-158
- 30 SQ7003-159
- 31 SQ7003-160
- 32 SQ7003-164
- 33 SQ7003-162
- 34 SQ7003-161
- 35 SQ7003-165
- 36 SQ7003-166





37



38



39



40



41



42



43



46



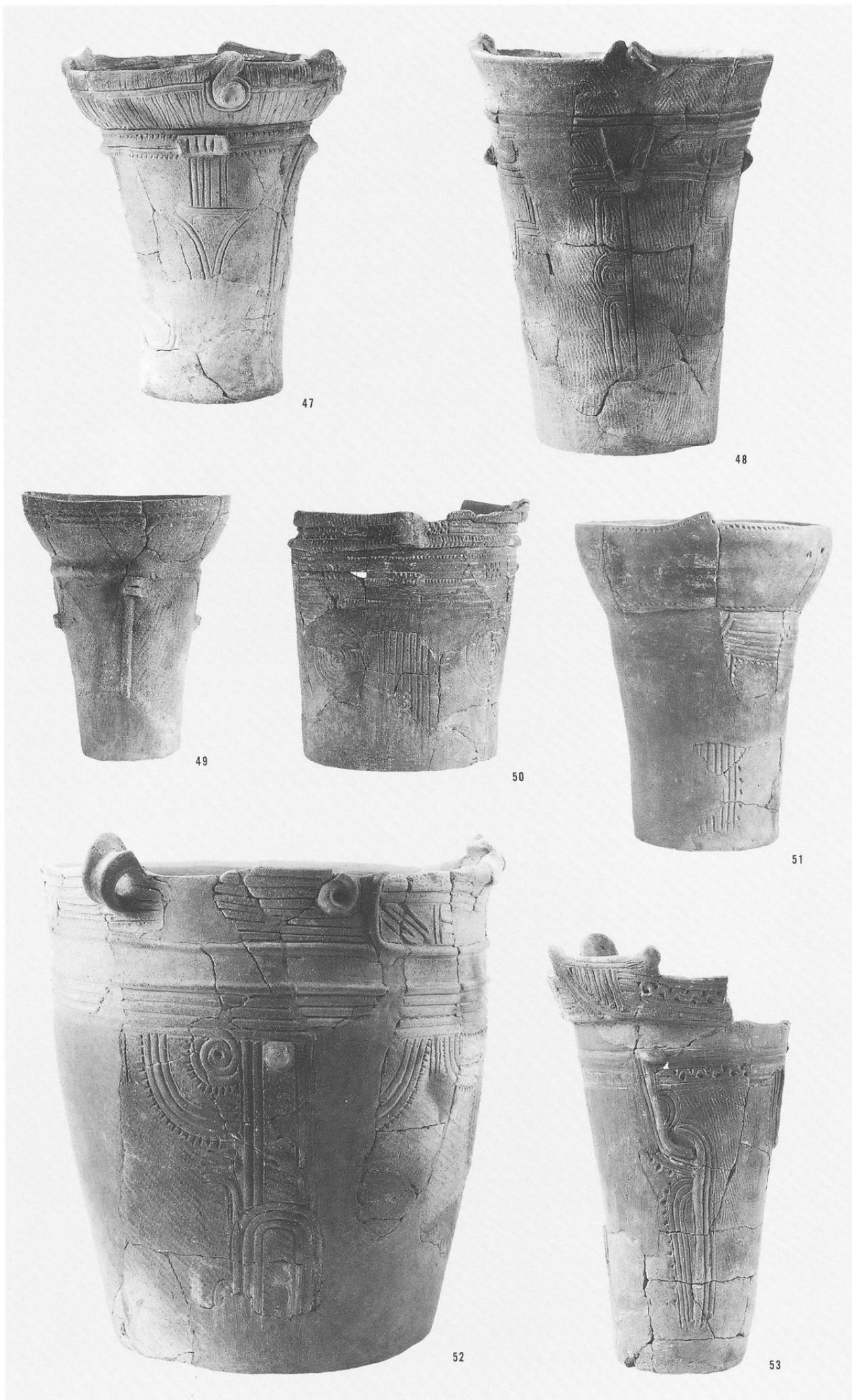
44



45

- 37 SQ7003-168
- 38 SQ7003-197
- 39 SQ7003-204
- 40 SQ7003-205
- 41 SQ7003-213
- 42 SQ7003-214
- 43 SQ7003-215
- 44 SQ7003-217
- 45 SQ7003-220
- 46 SQ7003-221

- 47 SQ7003-226
- 48 SQ7003-227
- 49 SQ7003-228
- 50 SQ7003-230
- 51 SQ7003-231
- 52 SQ7003-232
- 53 SQ7003-235





54



55



56



57



58



59



60



61



62

- 54 SQ7003-237
- 55 SQ7003-239
- 56 SQ7003-240
- 57 SQ7003-246
- 58 SQ7003-245
- 59 SQ7003-250
- 60 SQ7003-251
- 61 SQ7003-247
- 62 SQ7003-252

- 63 SQ7003-258
- 64 SQ7003-261
- 65 SQ7003-264
- 66 SQ7003-280
- 67 SQ7003-282
- 68 SQ7003-296
- 69 SQ7003-283
- 70 SQ7003-297
- 71 SQ7003-298
- 72 SQ7003-300





73



74



75



76



77



78



79



80



81



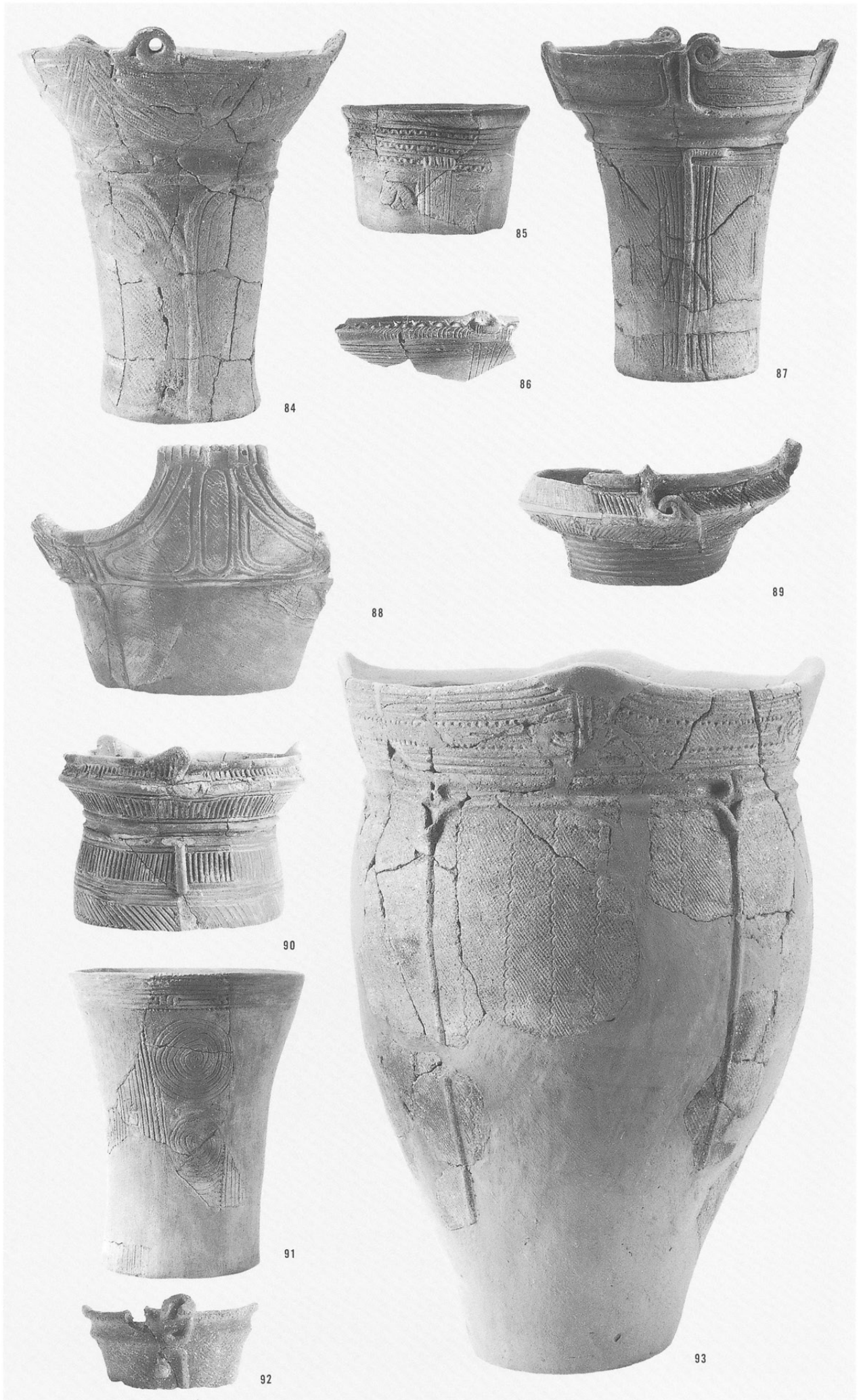
82

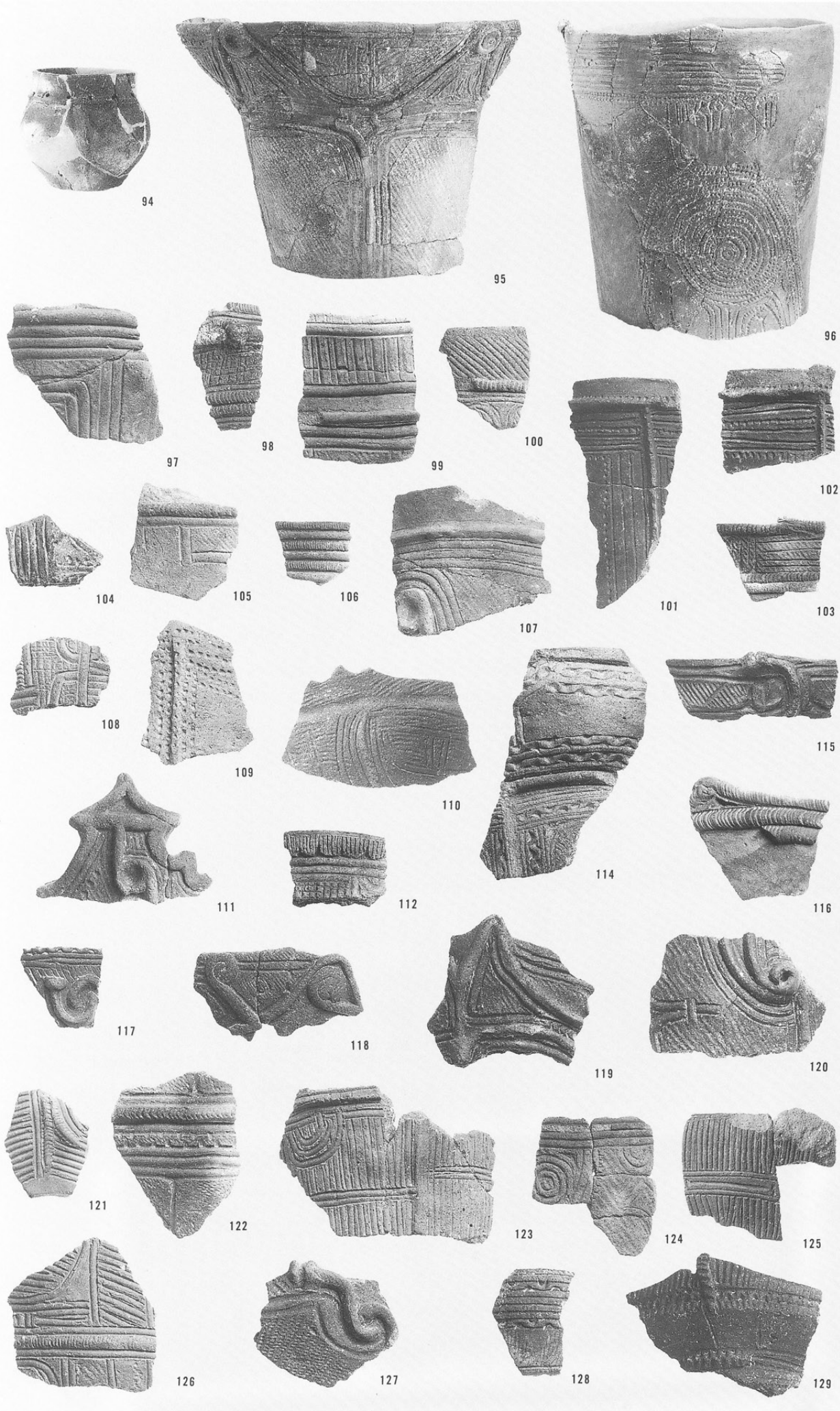


83

- 73 SQ7003-301
- 74 SQ7003-303
- 75 SQ7003-304
- 76 SQ7003-315
- 77 SQ7003-335
- 78 SQ7003-334
- 79 SQ7003-340
- 80 SQ7003-341
- 81 SQ7003-342
- 82 SQ7003-343
- 83 SQ7003-344

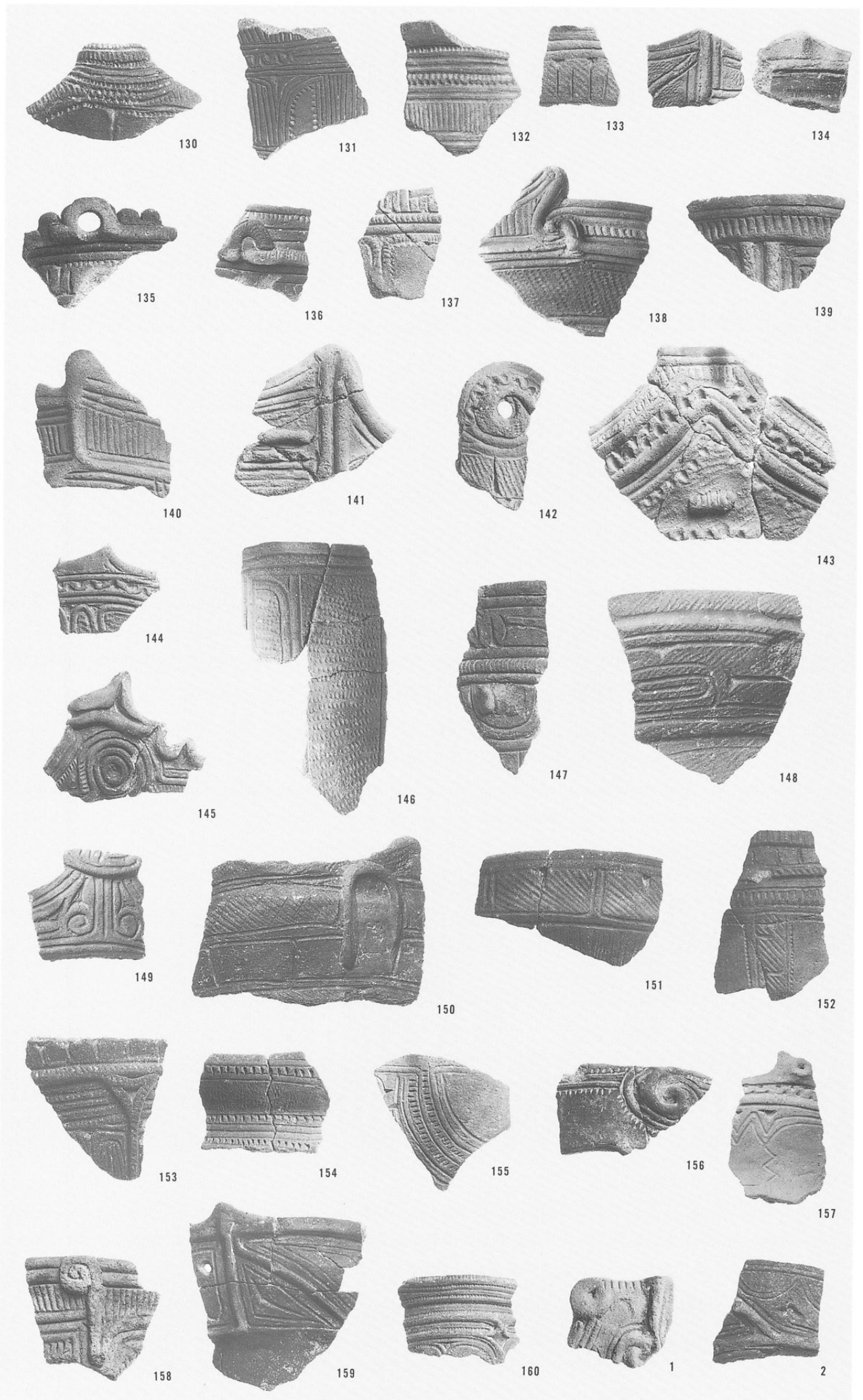
- 84 SQ7003-347
- 85 SQ7003-351
- 86 SQ7003-358
- 87 SQ7003-353
- 88 SQ7003-355
- 89 SQ7003-356
- 90 SQ7003-362
- 91 SQ7003-364
- 92 SQ7003-370
- 93 SQ7003-363



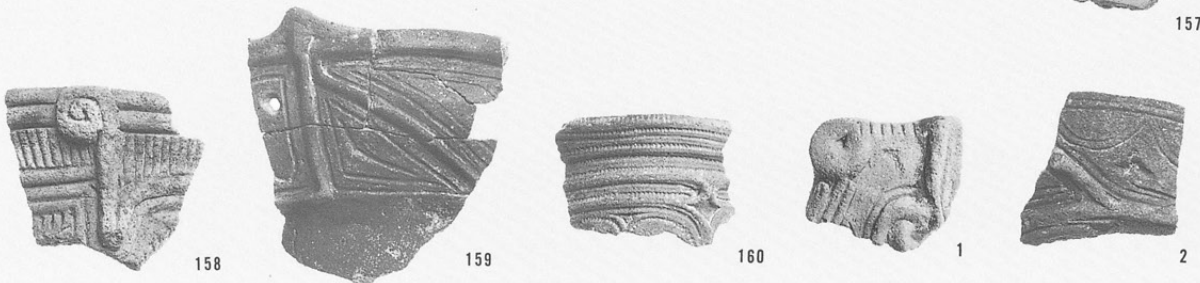


- 94 SQ7003-371
- 95 SQ7003-374
- 96 SQ7003-22
- 97 SQ7003-1
- 98 SQ7003-4
- 99 SQ7003-9
- 100 SQ7003-11
- 101 SQ7003-13
- 102 SQ7003-16
- 103 SQ7003-17
- 104 SQ7003-21
- 105 SQ7003-25
- 106 SQ7003-30
- 107 SQ7003-33
- 108 SQ7003-37
- 109 SQ7003-39
- 110 SQ7003-43
- 111 SQ7003-48
- 112 SQ7003-49
- 114 SQ7003-60
- 115 SQ7003-65
- 116 SQ7003-70
- 117 SQ7003-90
- 118 SQ7003-108
- 119 SQ7003-110
- 120 SQ7003-113
- 121 SQ7003-118
- 122 SQ7003-122
- 123 SQ7003-123
- 124 SQ7003-139
- 125 SQ7003-143
- 126 SQ7003-148
- 127 SQ7003-154
- 128 SQ7003-155
- 129 SQ7003-169

- 130 SQ7003-171
- 131 SQ7003-173
- 132 SQ7003-177
- 133 SQ7003-187
- 134 SQ7003-189
- 135 SQ7003-192
- 136 SQ7003-209
- 137 SQ7003-211
- 138 SQ7003-233
- 139 SQ7003-255
- 140 SQ7003-256
- 141 SQ7003-257
- 142 SQ7003-259
- 143 SQ7003-267
- 144 SQ7003-269
- 145 SQ7003-271
- 146 SQ7003-275
- 147 SQ7003-281
- 148 SQ7003-295
- 149 SQ7003-308
- 150 SQ7003-317
- 151 SQ7003-318
- 152 SQ7003-321
- 153 SQ7003-327
- 154 SQ7003-345
- 155 SQ7003-349
- 156 SQ7003-350
- 157 SQ7003-357
- 158 SQ7003-360
- 159 SQ7003-369
- 160 SQ7003-367



- 1 SQ7004-1
- 2 SQ7004-4





1



3



4



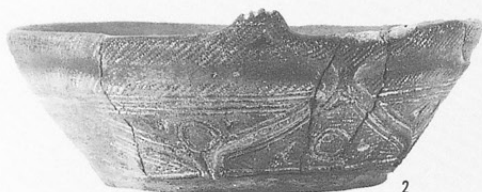
5



6



7



2



2



3



1



4



5

- 1 SQ9004-1
- 2 SQ9004-7
- 3 SQ9004-43
- 4 SQ9004-48
- 5 SQ9004-12
- 6 SQ9004-13
- 7 SQ9004-16

XIV-1層

- 1 包含層-1
- 2 包含層-17
- 3 包含層-18
- 4 包含層-14
- 5 包含層-21