

判ノ木山西遺跡縄文時代早期土器(1)



1. 2. 3類表
(含前期土器)



同裏



3-e類

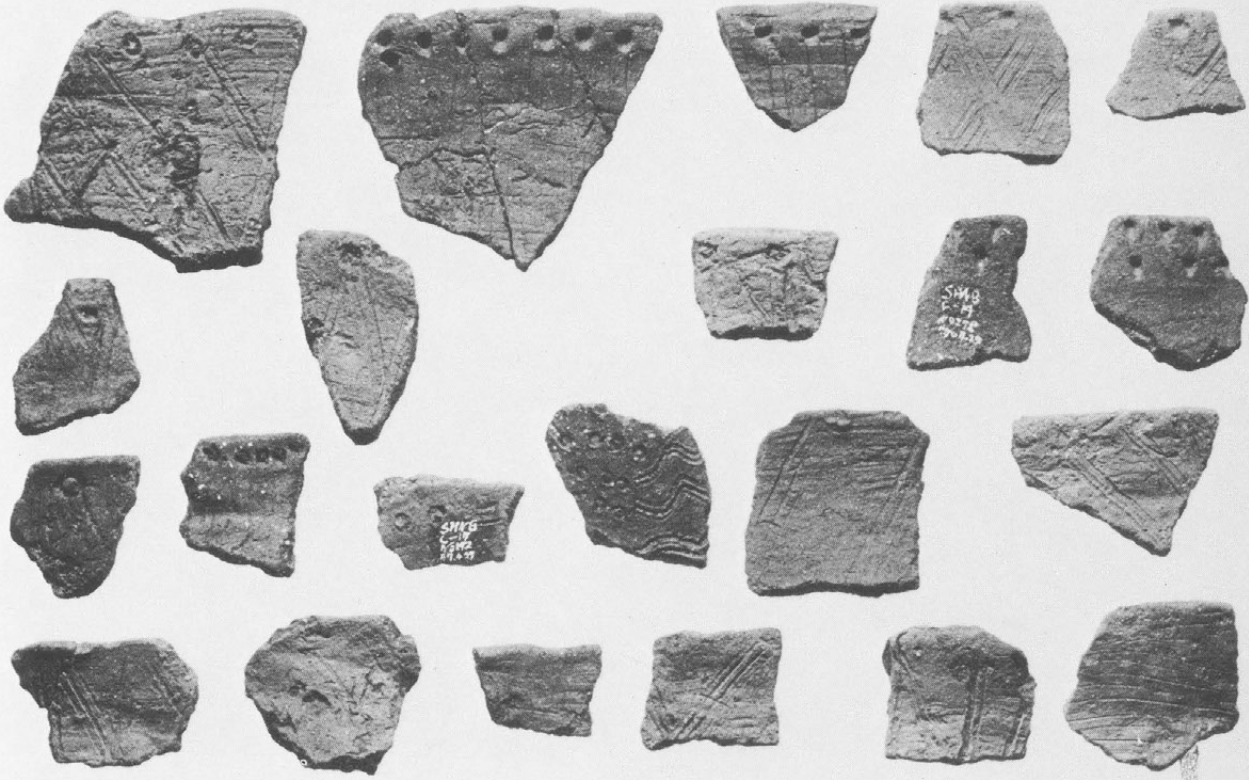
判ノ木山西遺跡縄文時代早期土器(2) ㄥ



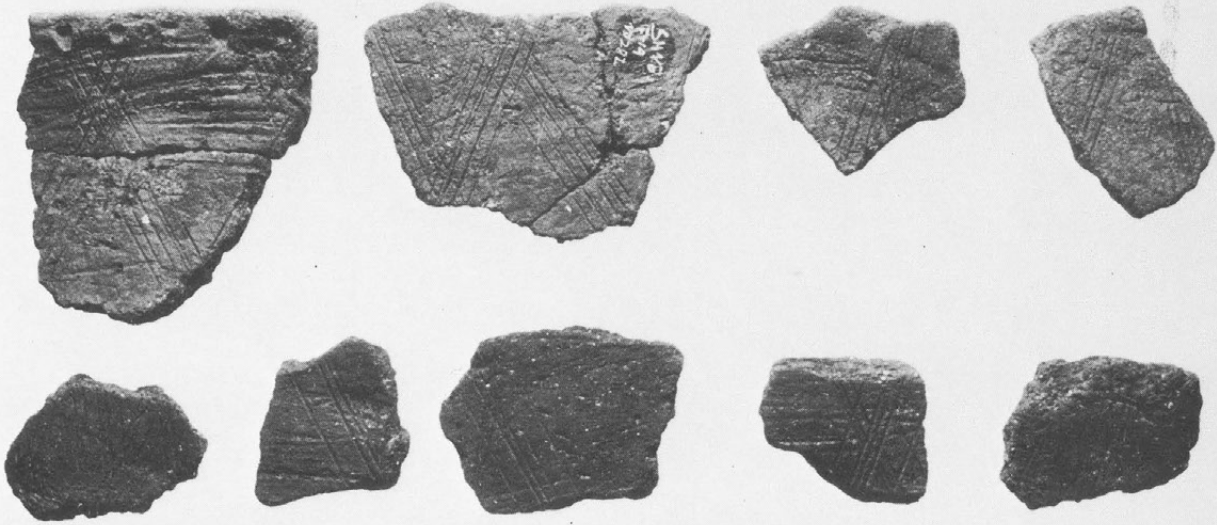
3-e 類表



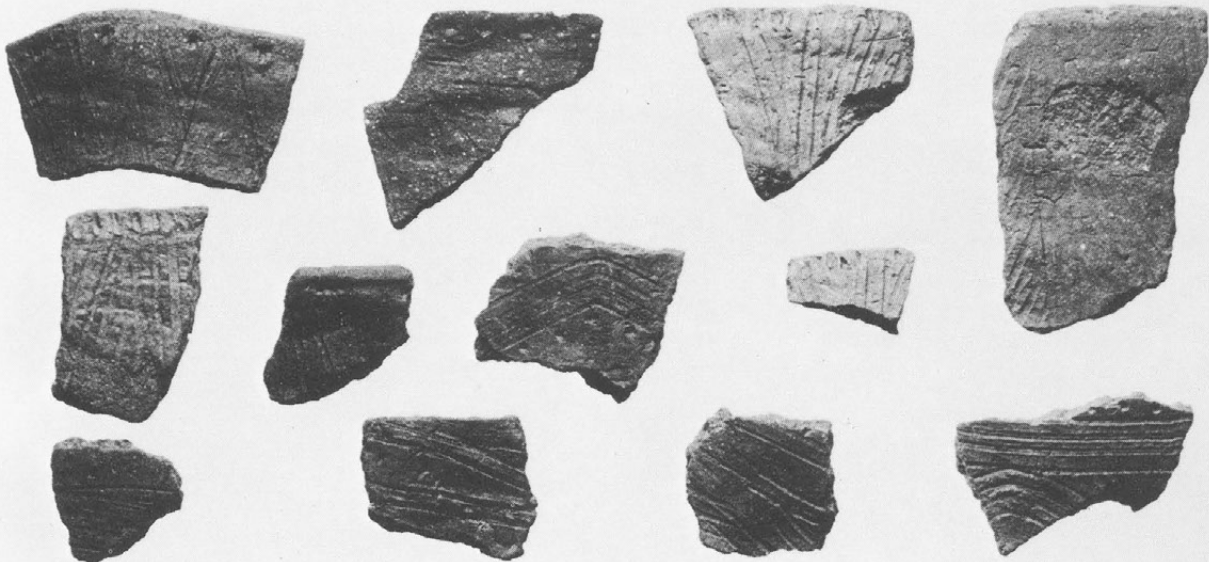
3-e 類表



3-b類表



3-b類裏



3-a類

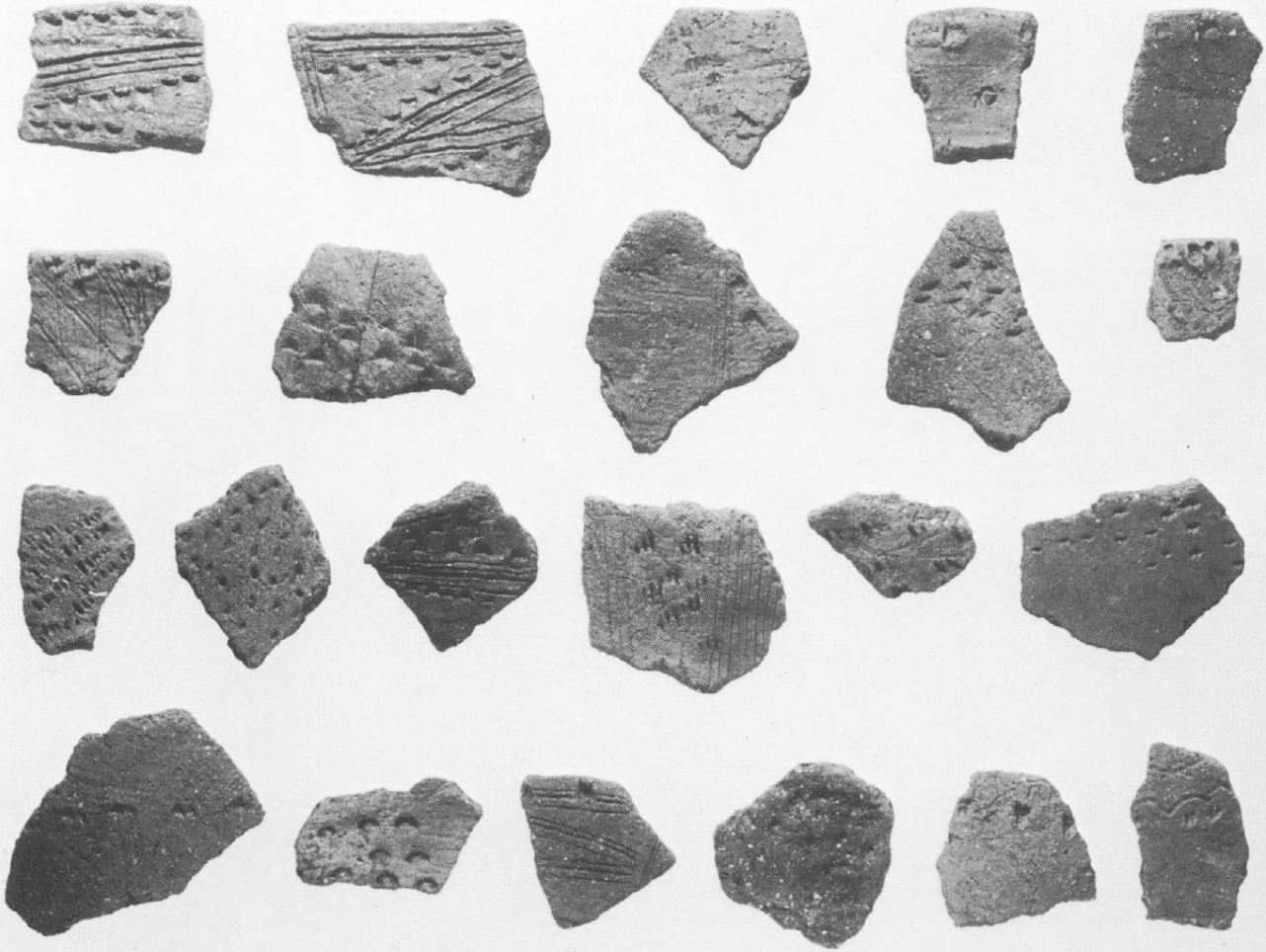
判ノ木山西遺跡縄文時代早期土器(4) ㄱ



4類表



4類裏



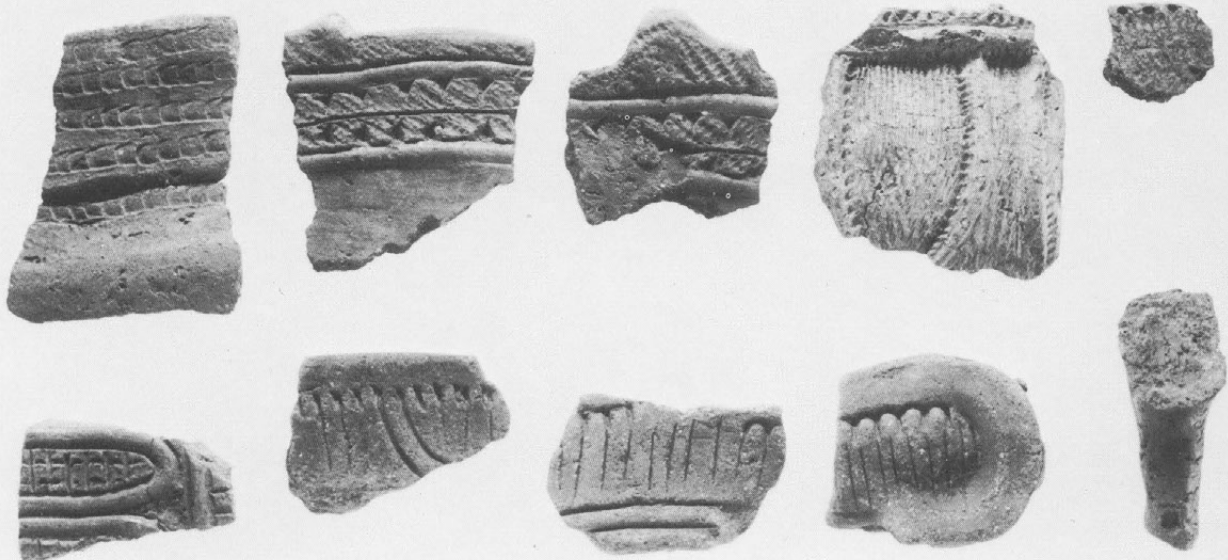
3-c 類



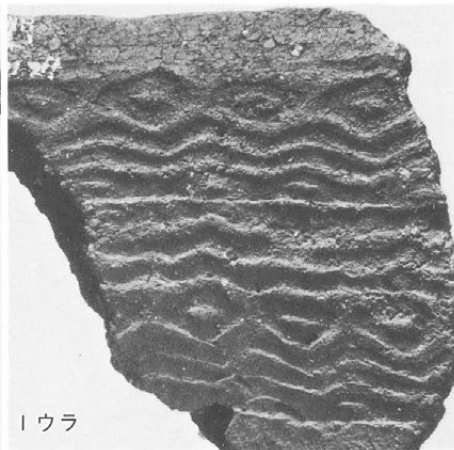
28



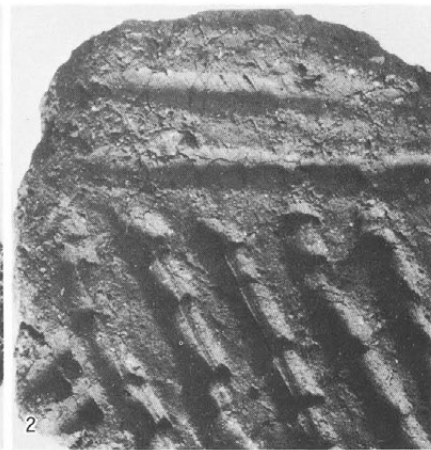
55



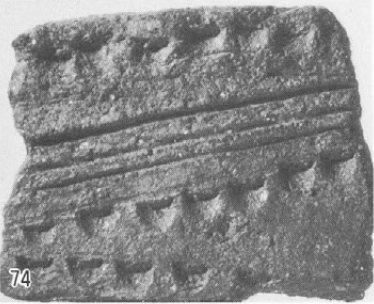
判ノ木山西遺跡縄文時代早期土器細部(1) ㄨ



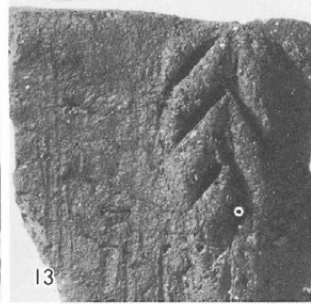
1ウラ



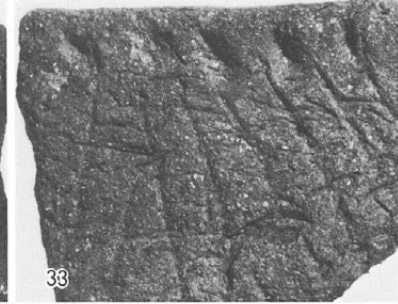
2



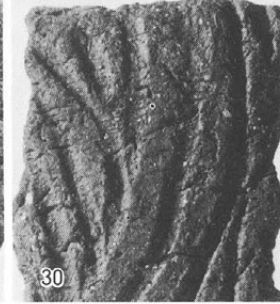
74



13



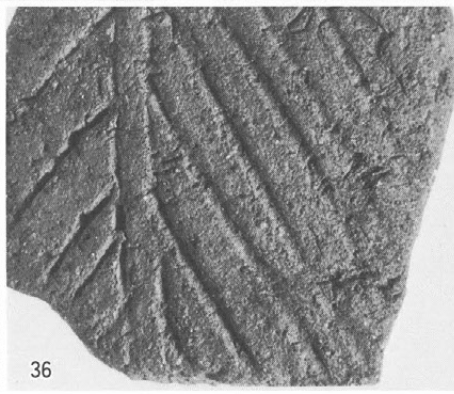
33



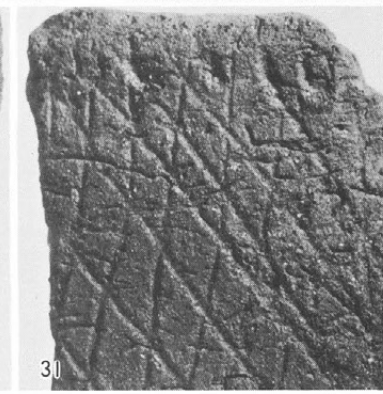
30



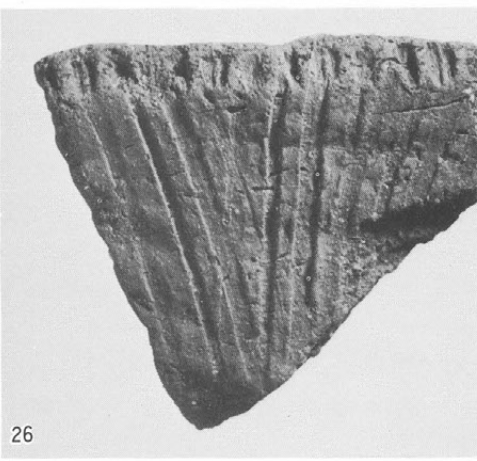
①



36



31



26

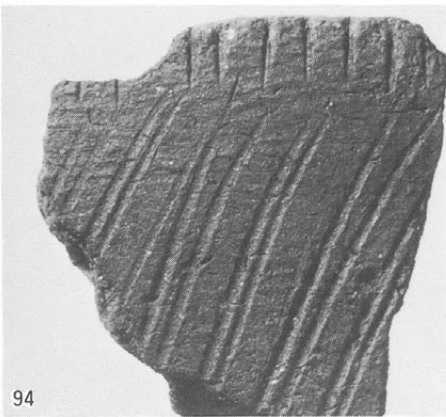


21

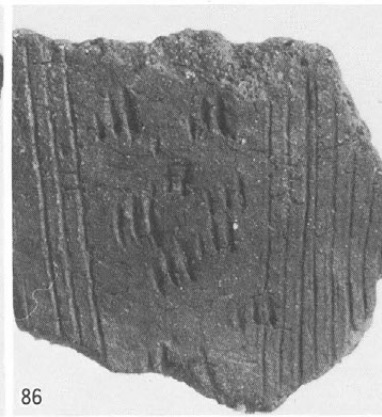


19

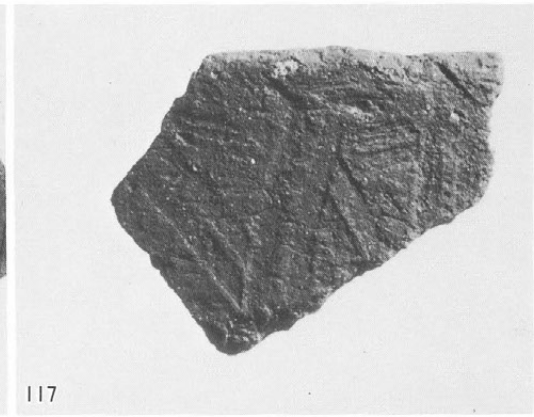
SHMS
101E
85
770309



94



86



117



42



54



59



20



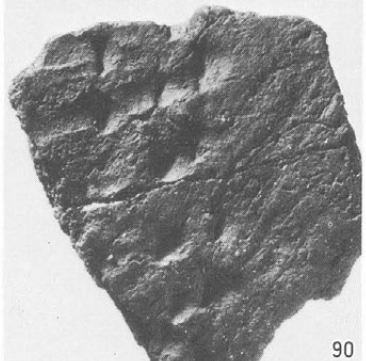
47



57



78



90



103



58



77



107



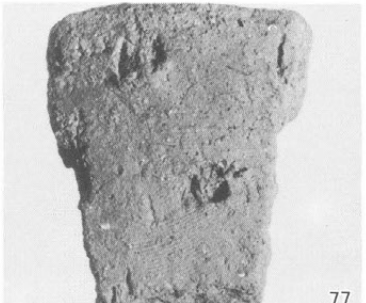
61



63



49



77

判の木山西遺跡縄文時代中期土器(1) ㍻



43



57



55



36a



49



36b



13



42



52

判の木山西遺跡縄文時代中期土器(2) 1/3



12



(1)



15a



15b

判の木山西遺跡縄文時代中期土器(3) 1/3



54a



54b



54c



3



40



44



45a



45b



5a



5b



9a



9b



38a



38b



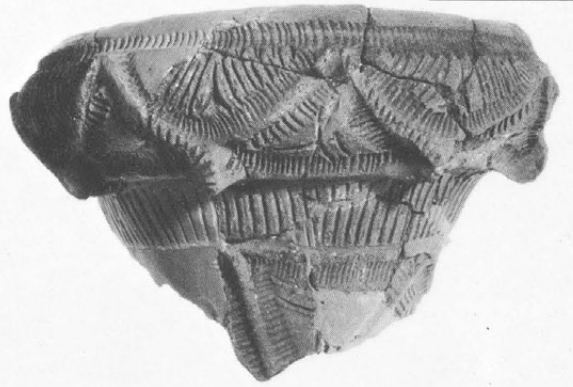
6

判の木山西遺跡縄文時代中期土器(4) (1/3・9a 9bは1/4.5)

判の木山西遺跡縄文時代中期土器(5) 1/8



34



4



23



37a



37b



35



20



58



39



10

判の木山西遺跡縄文時代中期土器(6) 1/5

判の木山西遺跡縄文時代中期土器(7) ㊦



16



18



8a



21



8b



14



53



32



22



26



29



48



沈線の切り合い(第8類)



隆帯の重なり合い



同左



隆帯の剥落、結節沈線C₁



隆帯の重なり合い、沈線と結節沈線 e



隆帯・加飾の重なり合い、結節沈線 b



隆帯の剥落



粘土塊の剥落、半截竹管腹面の結節沈線



結節沈線 a・b 混在



結節沈線 b



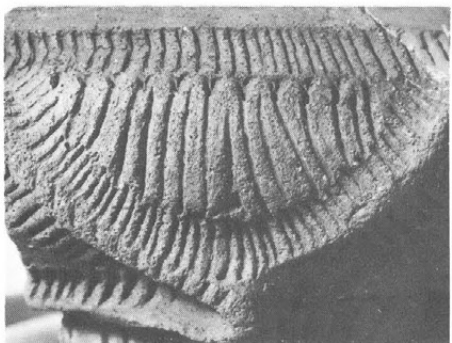
結節沈線 b



結節沈線 a・c



結節沈線 b・c



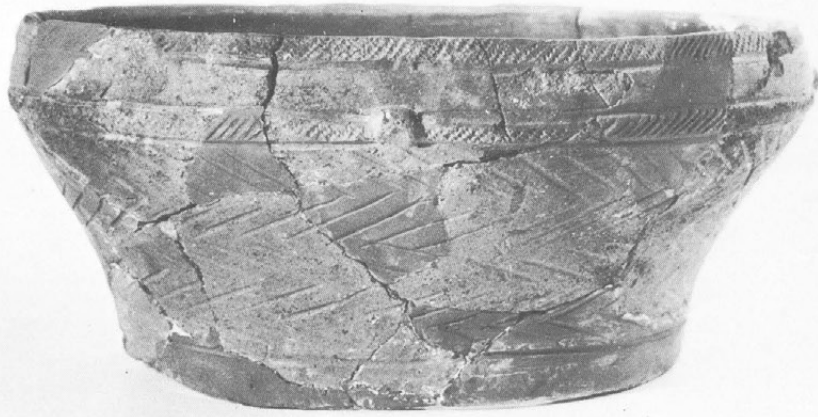
結節沈線 C₂



結節沈線 e



結節沈線 C₁・C₂



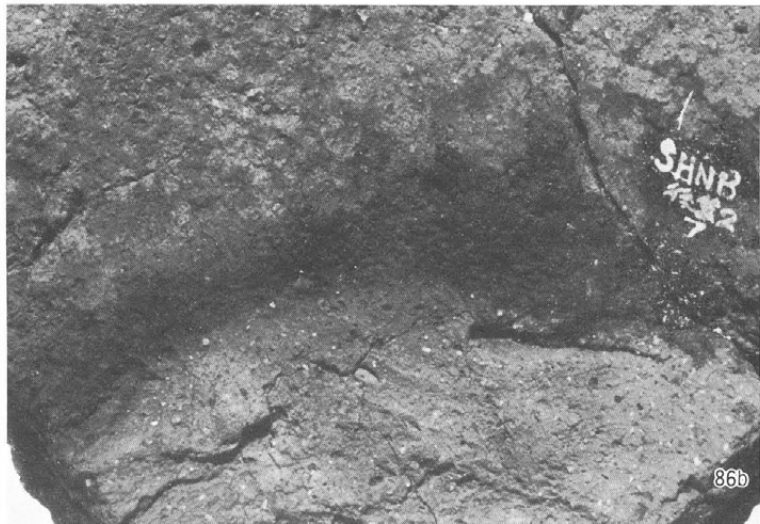
68



82

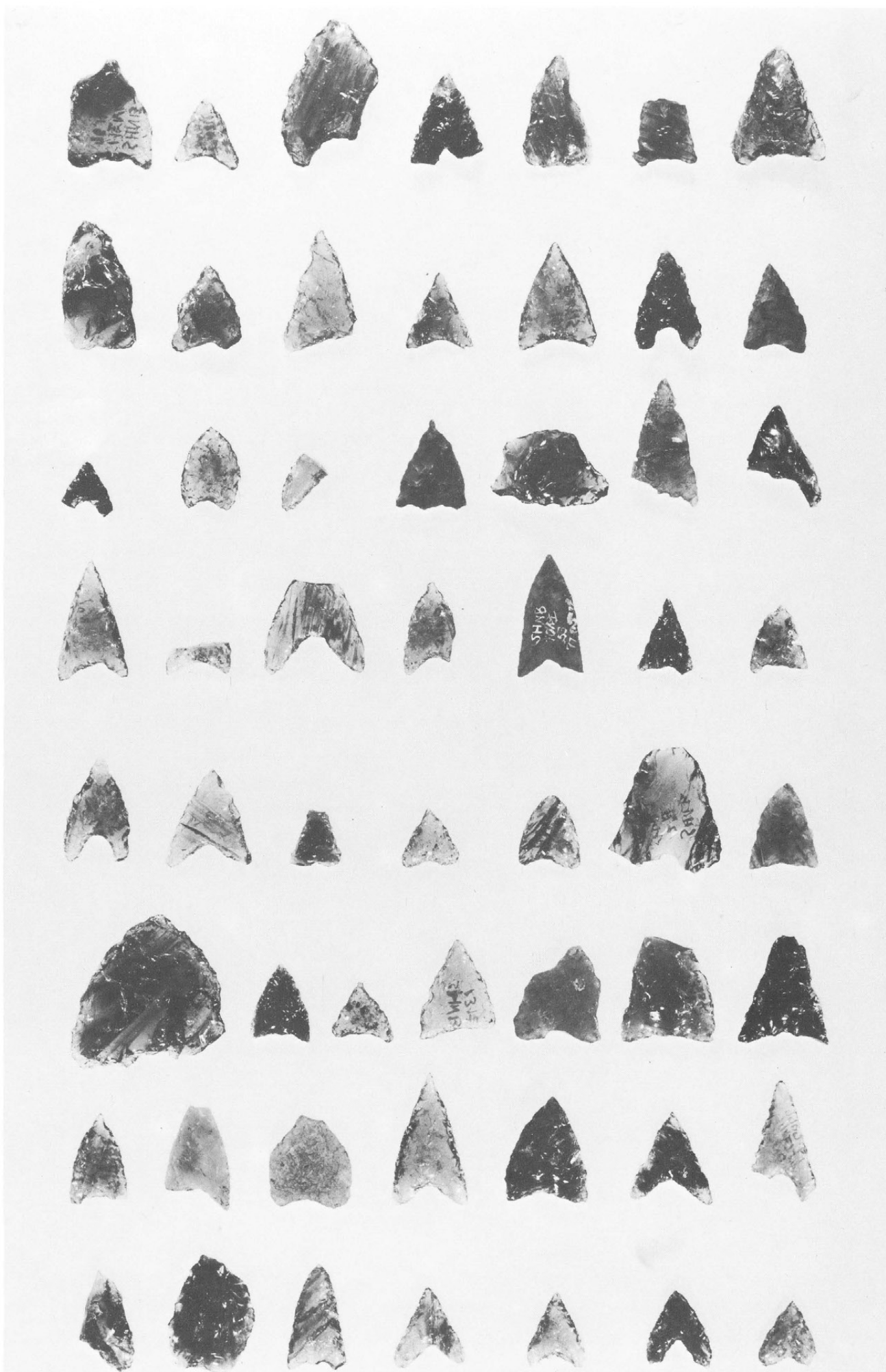


86a



86b

石 鏃 (1:1)



石 鏃 (1:1)



スクレイパー・石匙 (1:1)

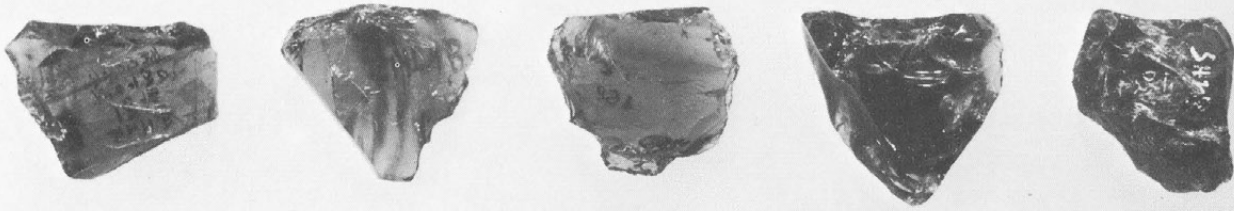


石錐・石核状石器・ピエス・エスキュー・その他剥片石器 (1:1)

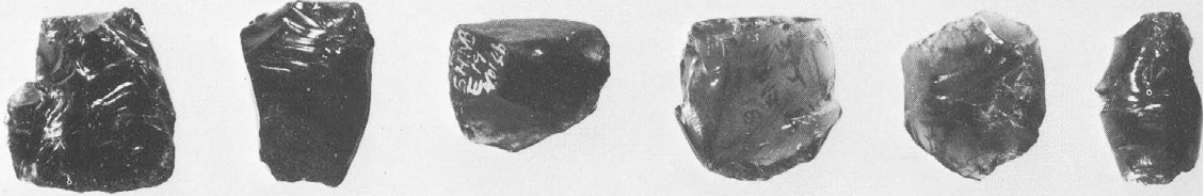
石錐



石核状石器



ピエス・エスキュー



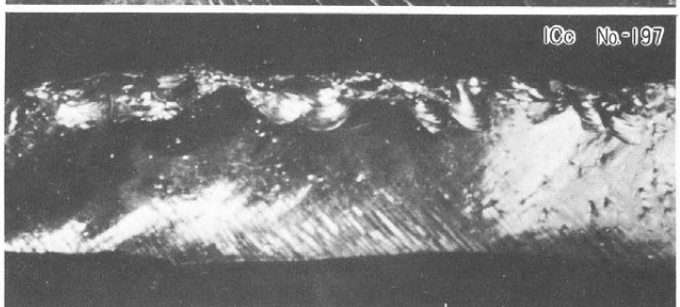
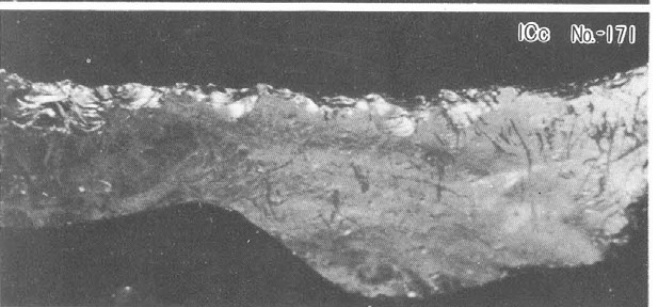
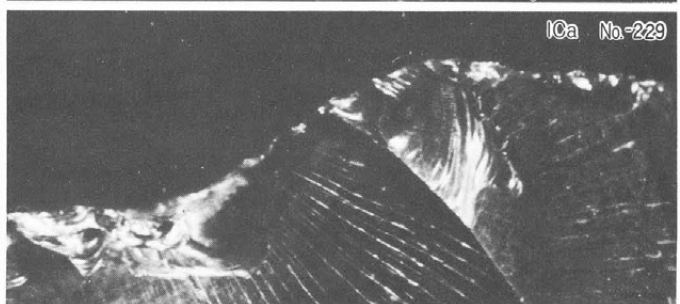
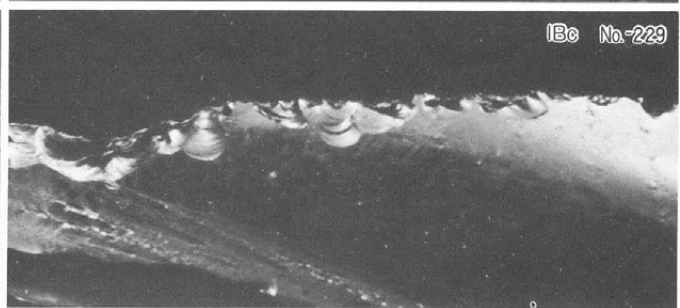
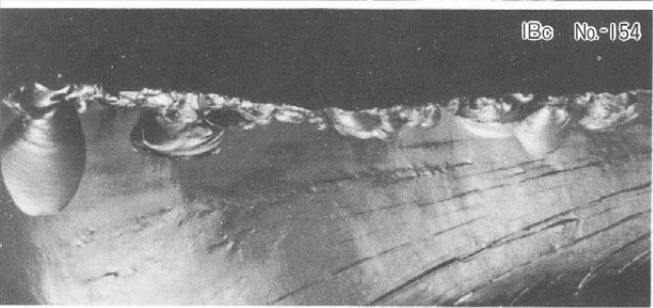
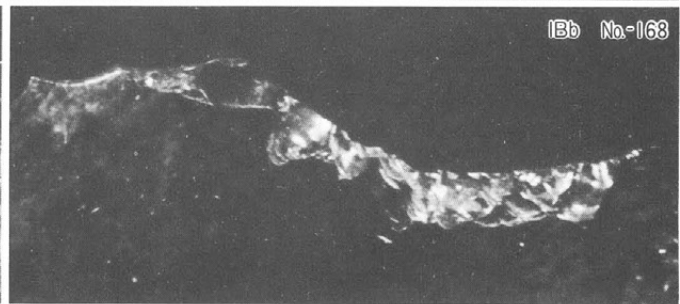
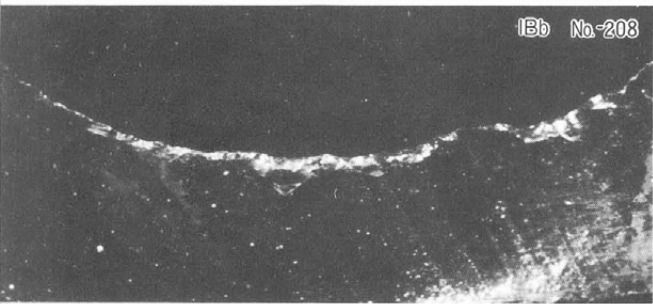
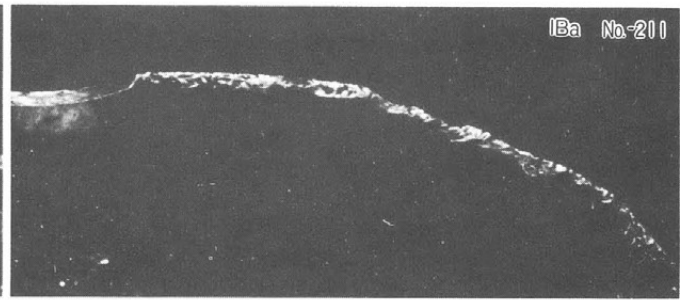
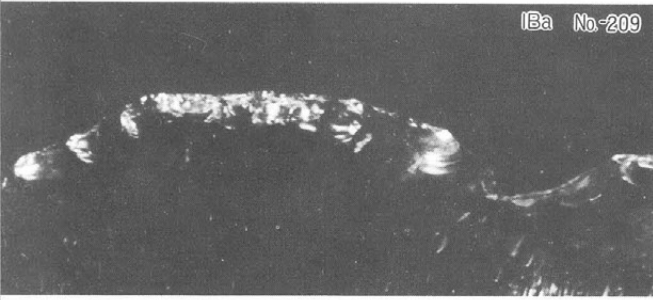
その他剥片石器



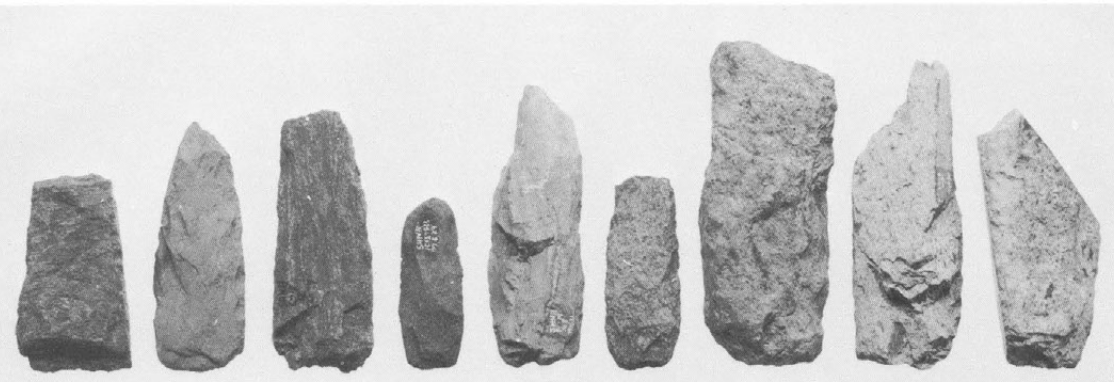
使用痕のある剥片類 (1:1)



使用痕のある剥片類(5倍) 石錐 No.72(6倍) No.-68(8倍)



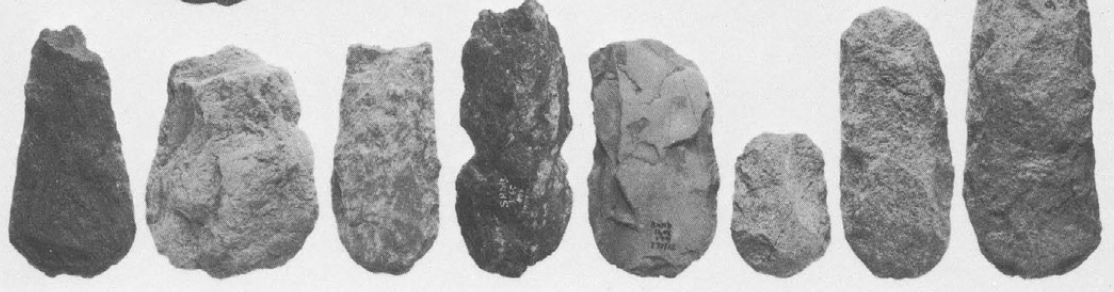
打製石斧
A類



B類

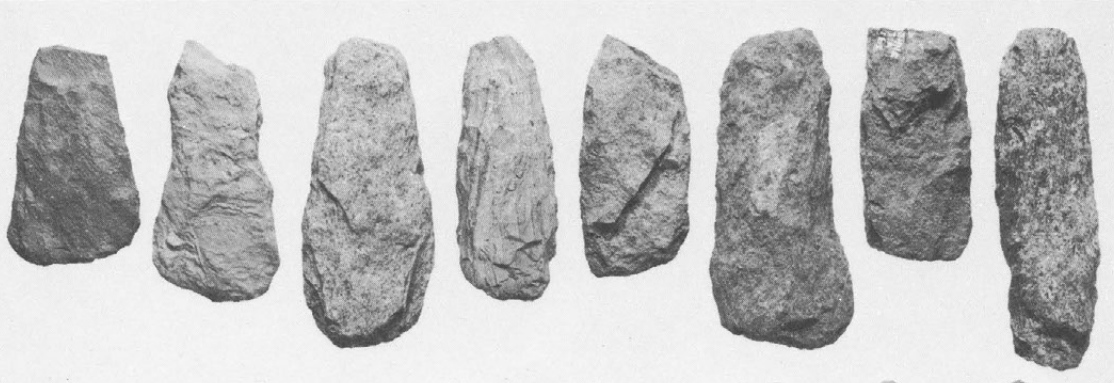


B'類

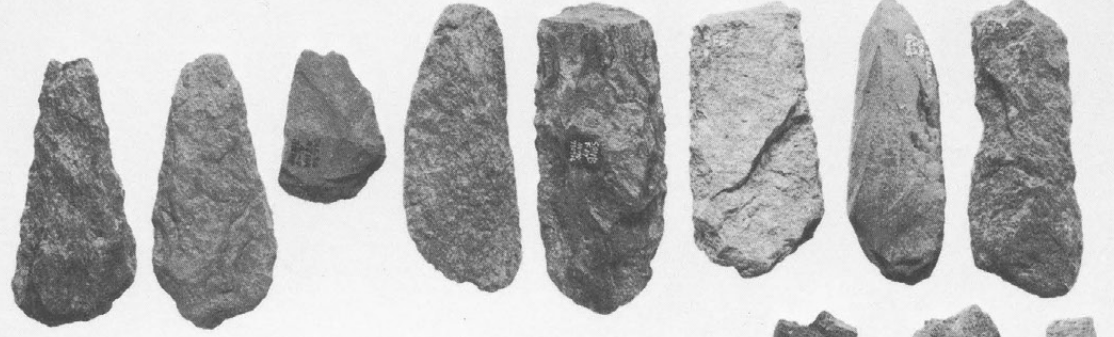


(1:3)

打製石斧
C類



C'類



D類
接合品



(1:3)



大形打製石斧

不定形石器

(1:3)



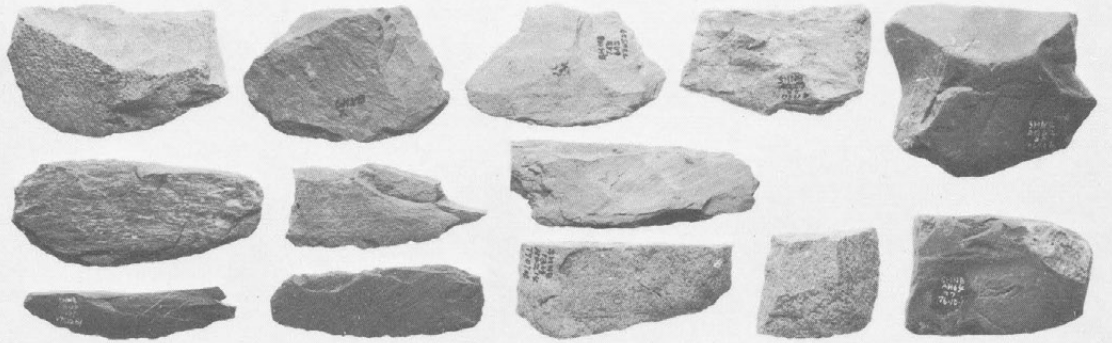
磨製石斧

(1:3)

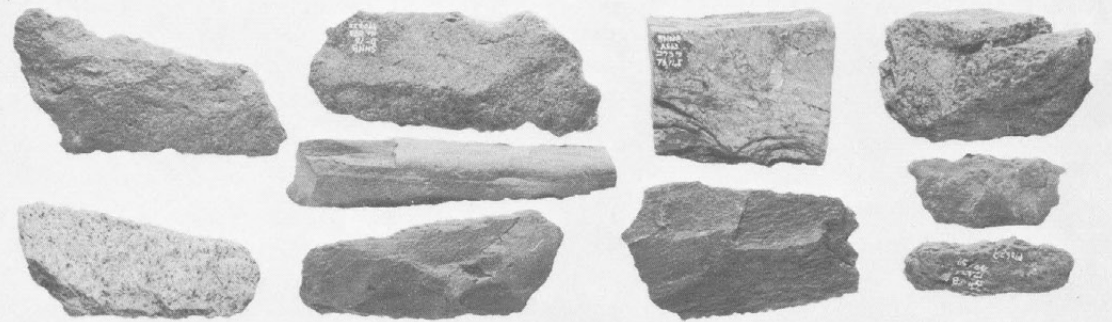
大形石匙



横刃型石器
I A類

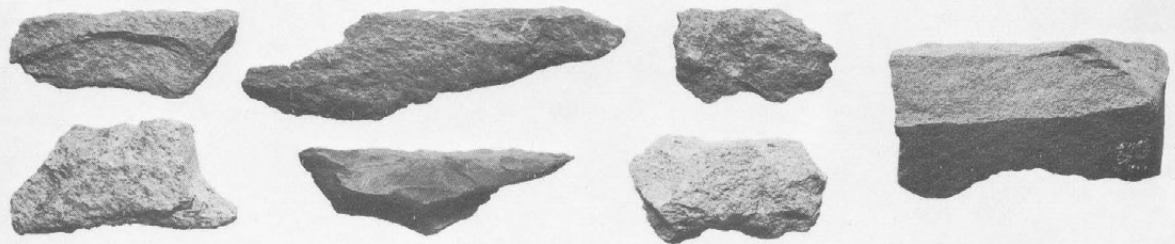


I B類

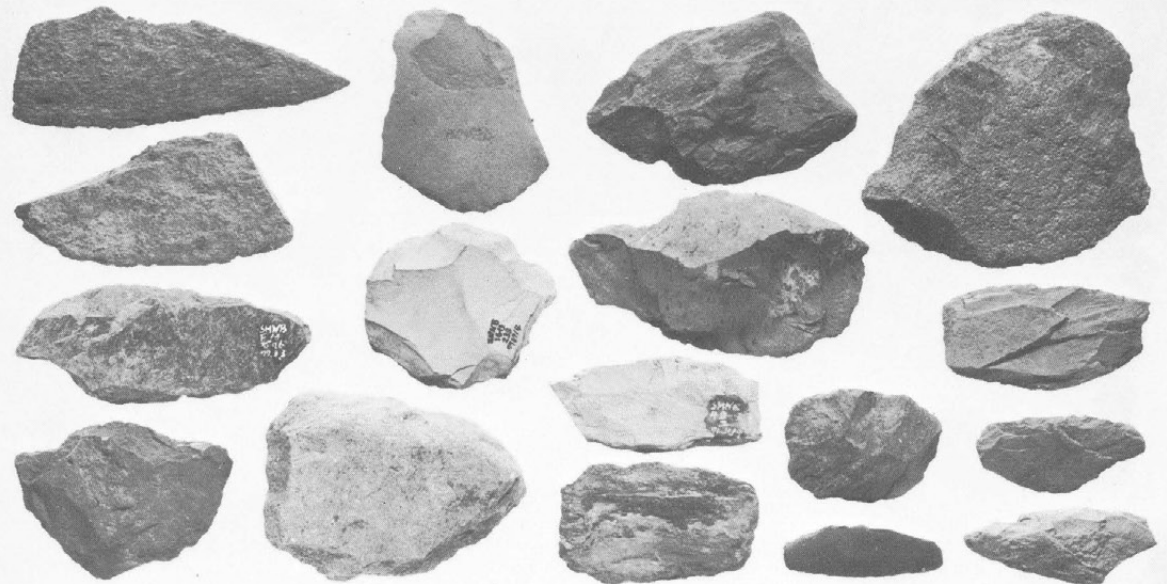


(1:3)

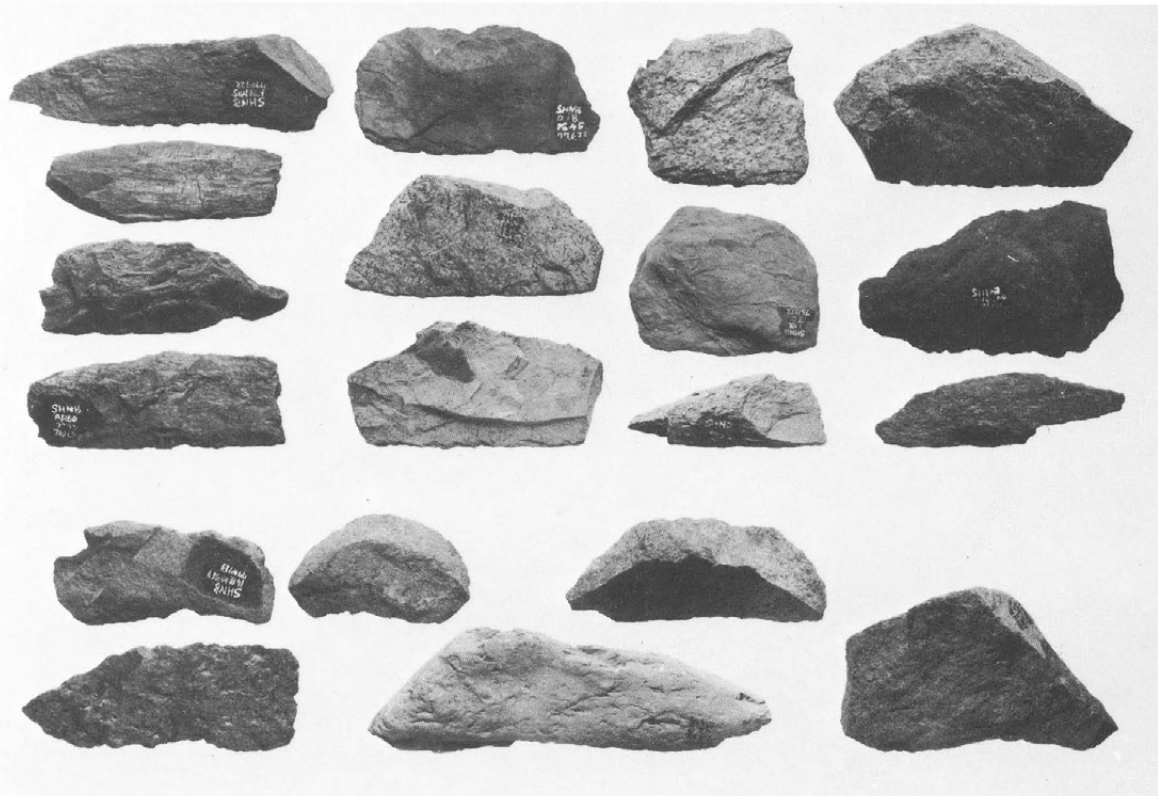
横刃型石器
I C類



II A類



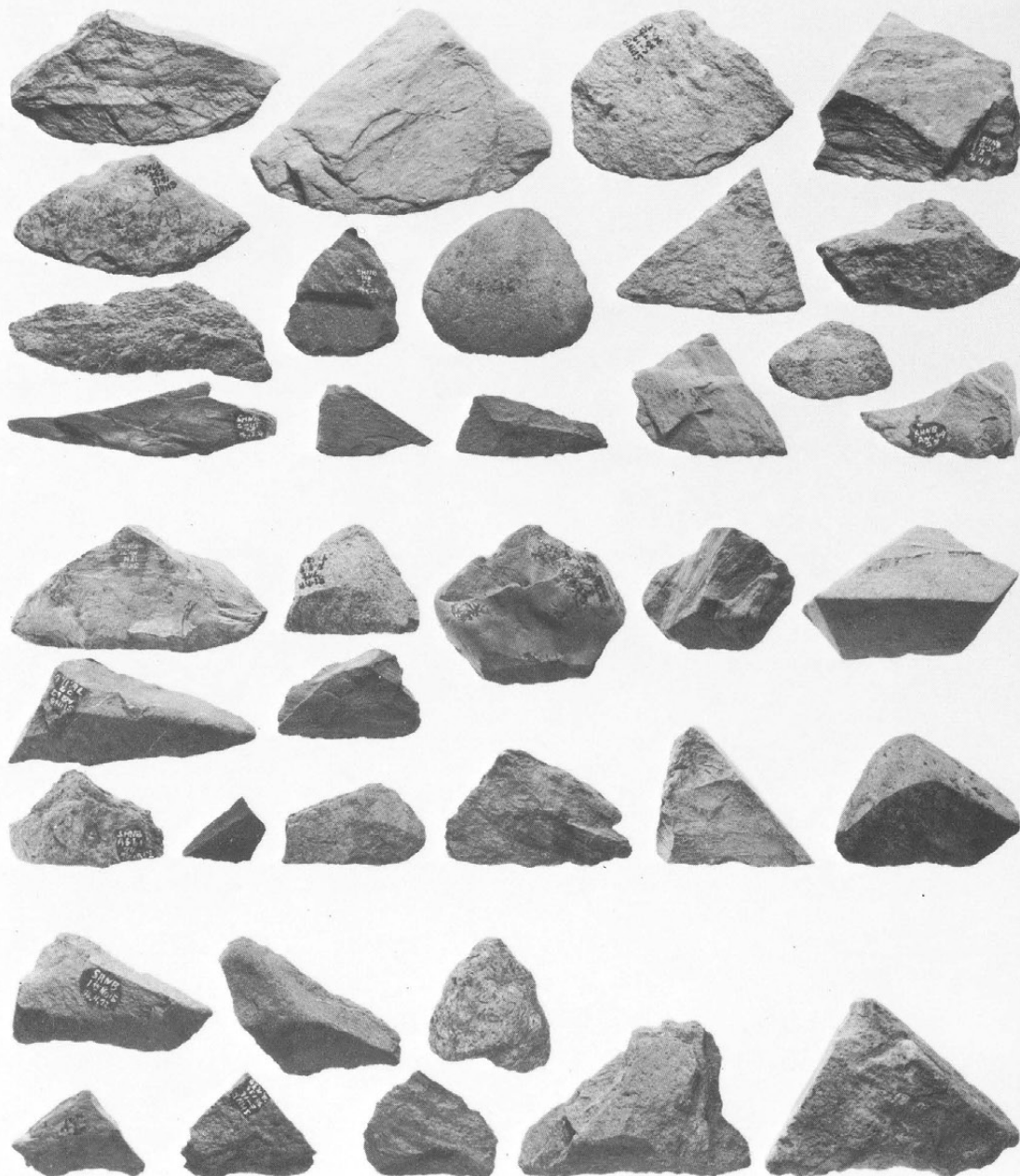
(1:3)



横刃型石器
II B類

II C類

(1:3)



横刃型石器
III A類

III B類

III C類

(1:3)

横刃型石器

IV A類



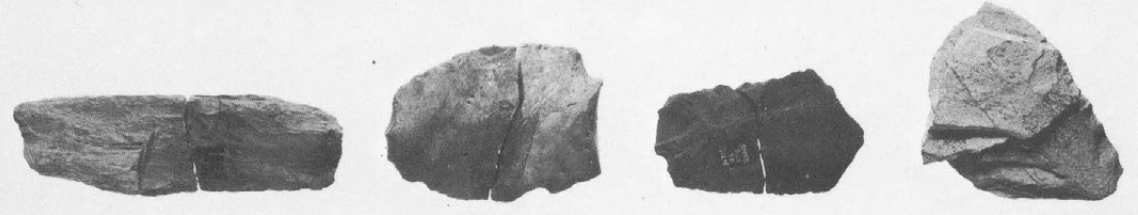
IV B類



IV C類

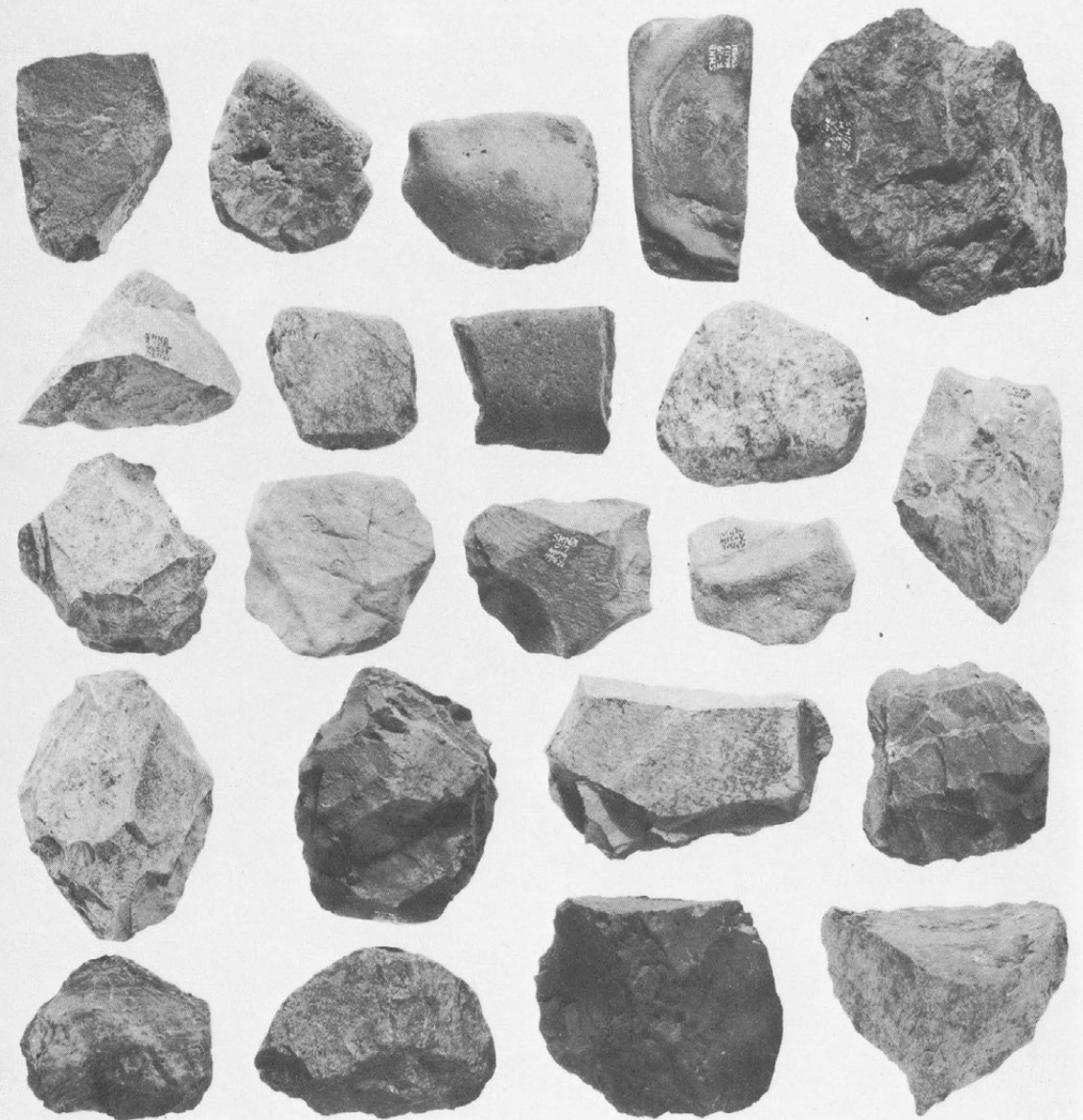


接合品



(1:3)

礫器



(1:3)

特殊磨石



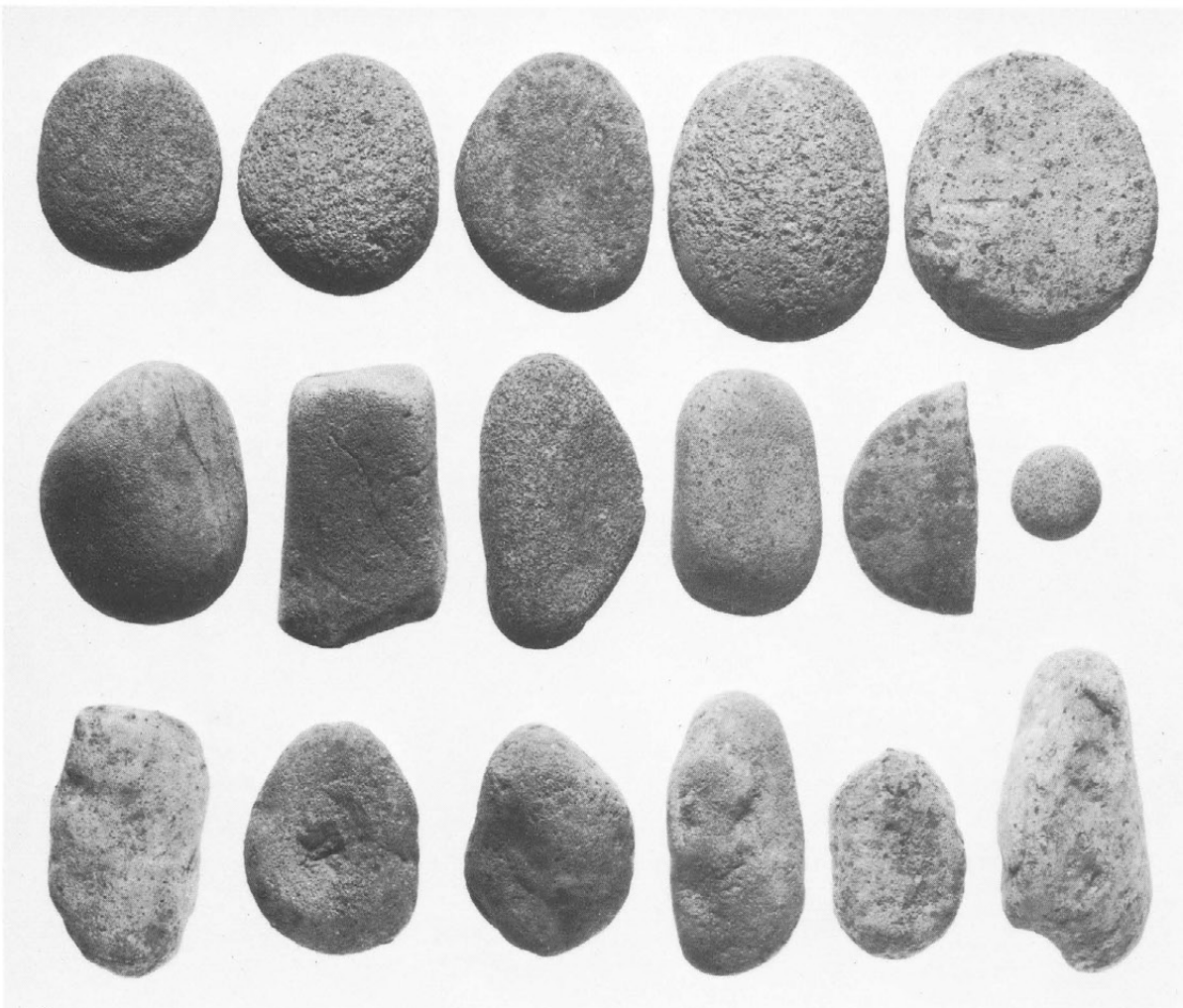
(1:3)

特殊磨石



(1:3)

磨痕・凹みを持つ石



(1:3)

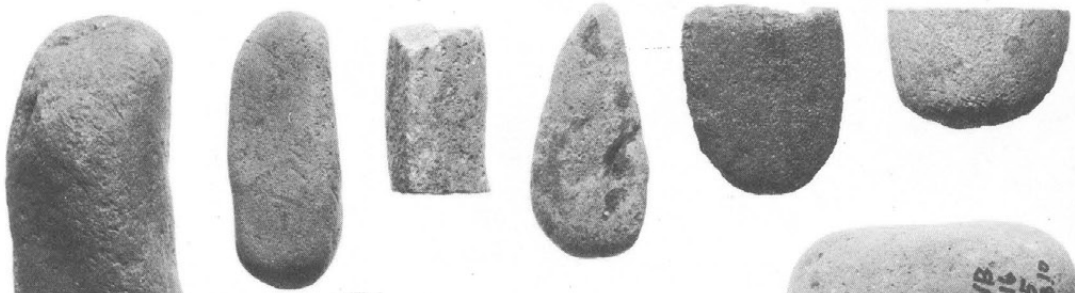
凹みを持つ石



(1:3)



凹み・敲打痕を持つ石



台石



(1:3)



使用痕ある石

(1:2)



石皿、砥石、台石

(1:6)



37



26



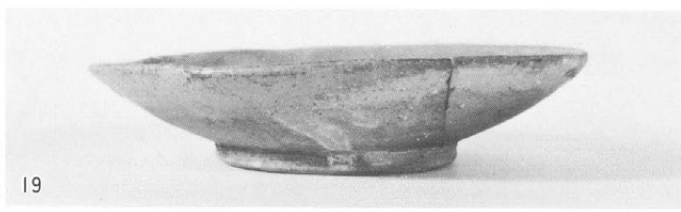
2



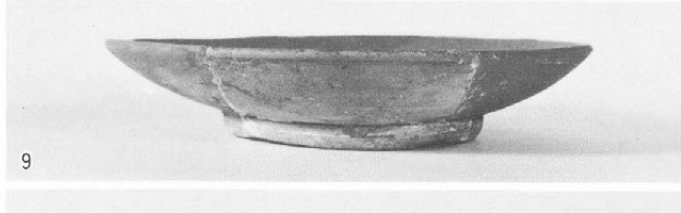
24



3



19



9



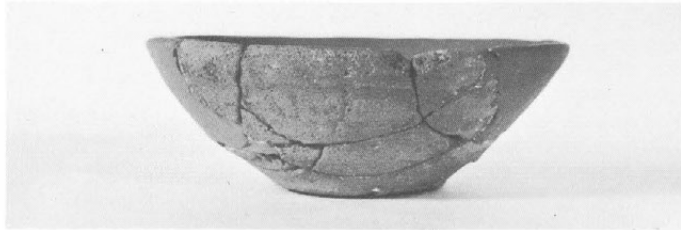
8



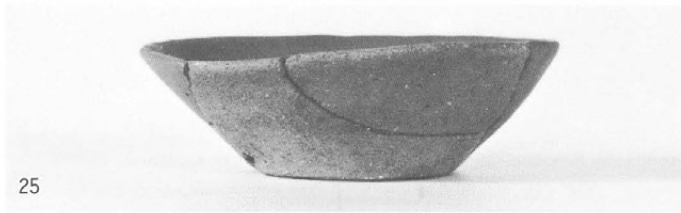
7



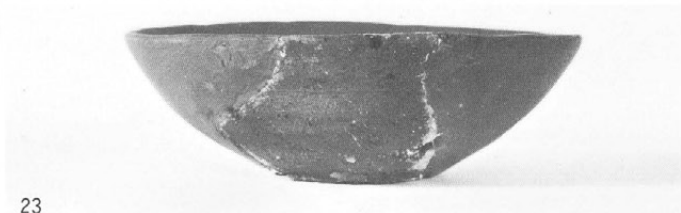
28



22



25

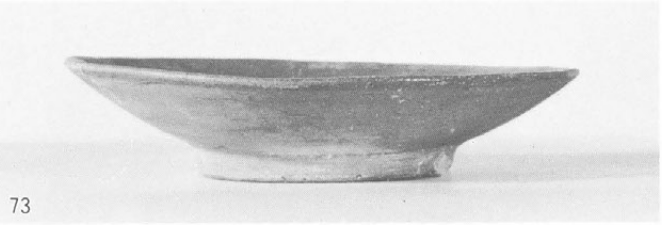


23

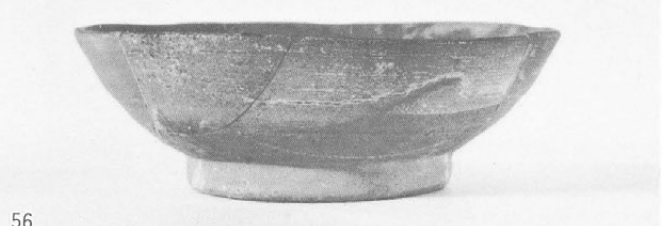


4

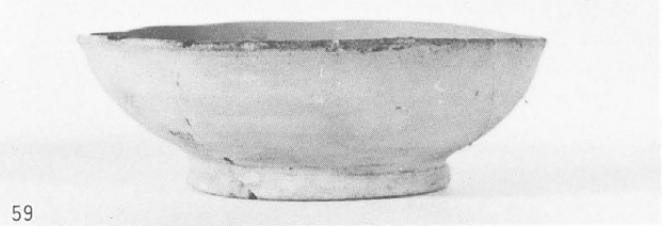




73



56



59



49



60



48



47



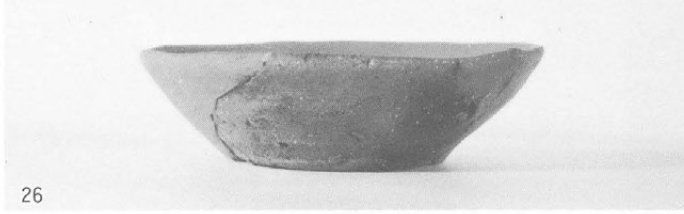
44



43



41



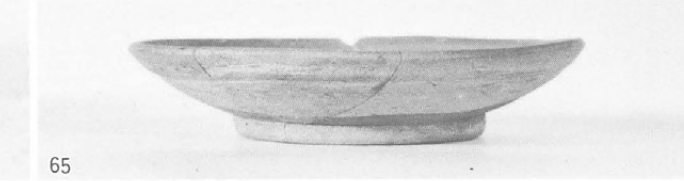
26



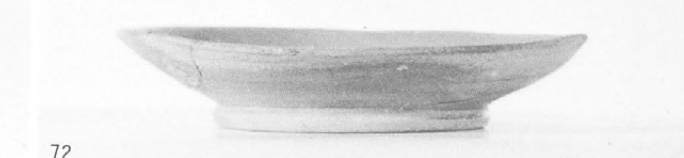
80



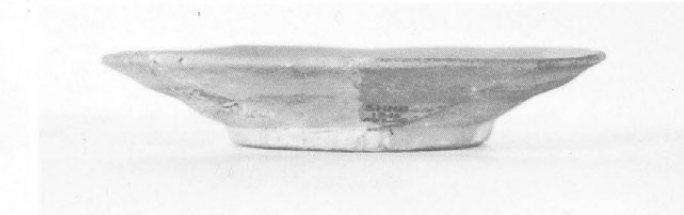
64



65



72



72



118



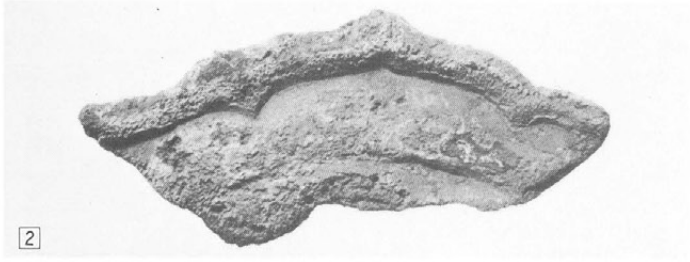
117



119



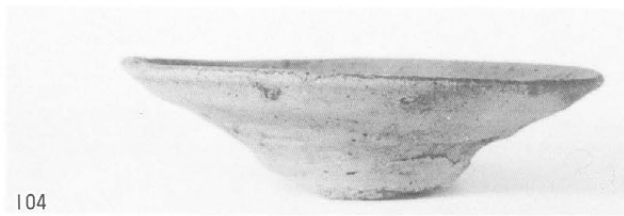
1



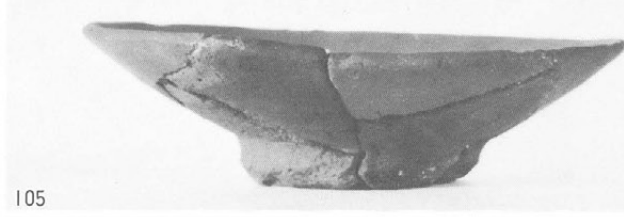
2



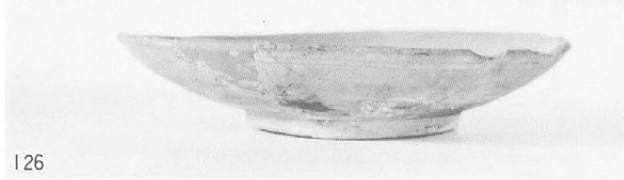
91



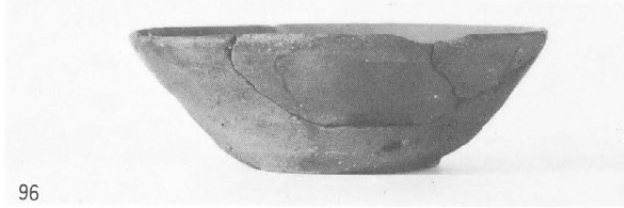
104



105



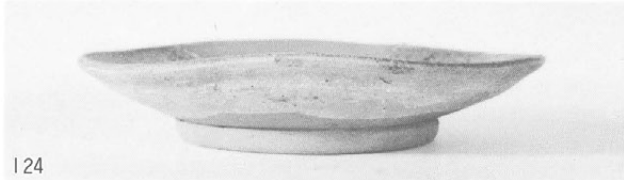
126



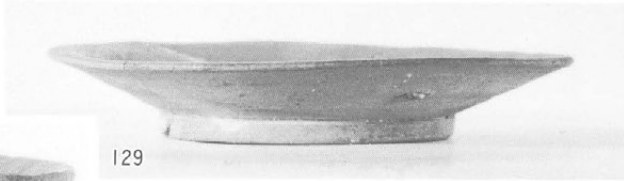
96



112



124



129



②



123



12住出土
羽口

判ノ木山西遺跡平安時代土器細部



13



1



14



2

③



15



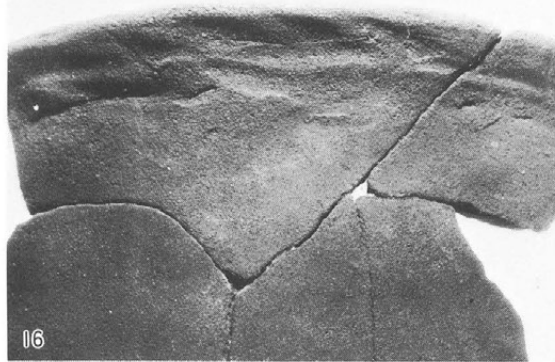
4

3

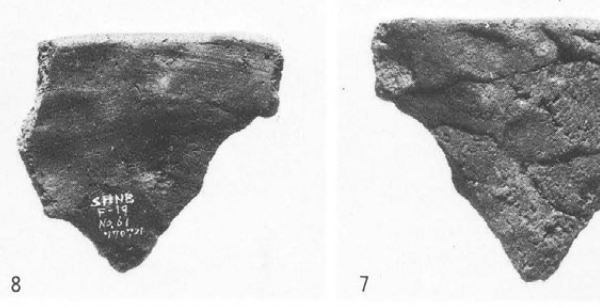


6

5



16

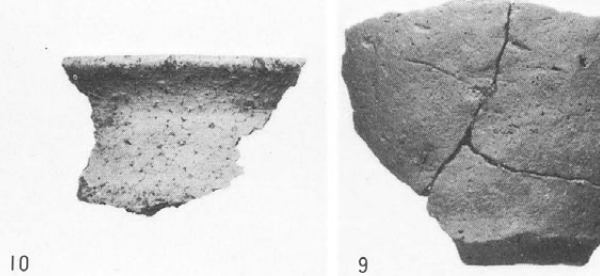


8

7

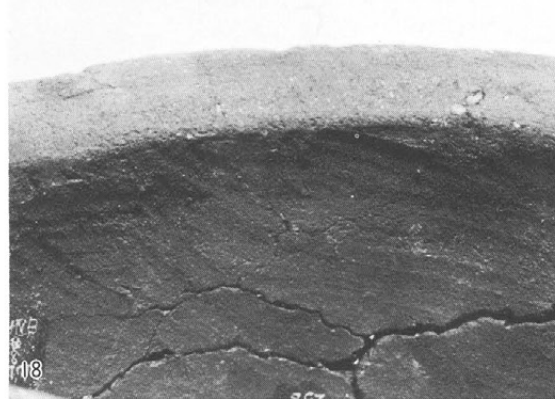


17



10

9



18



11



12



判ノ木山東、13住



13号住



金山沢北遺跡



金山沢北遺跡



縄文早期土器出土地点

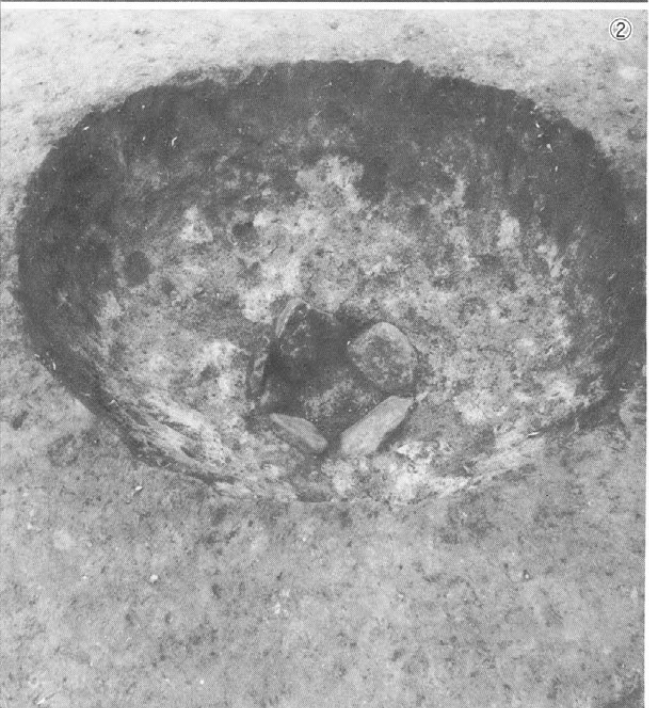




集石 1 ①



集石 2 ①



②



②



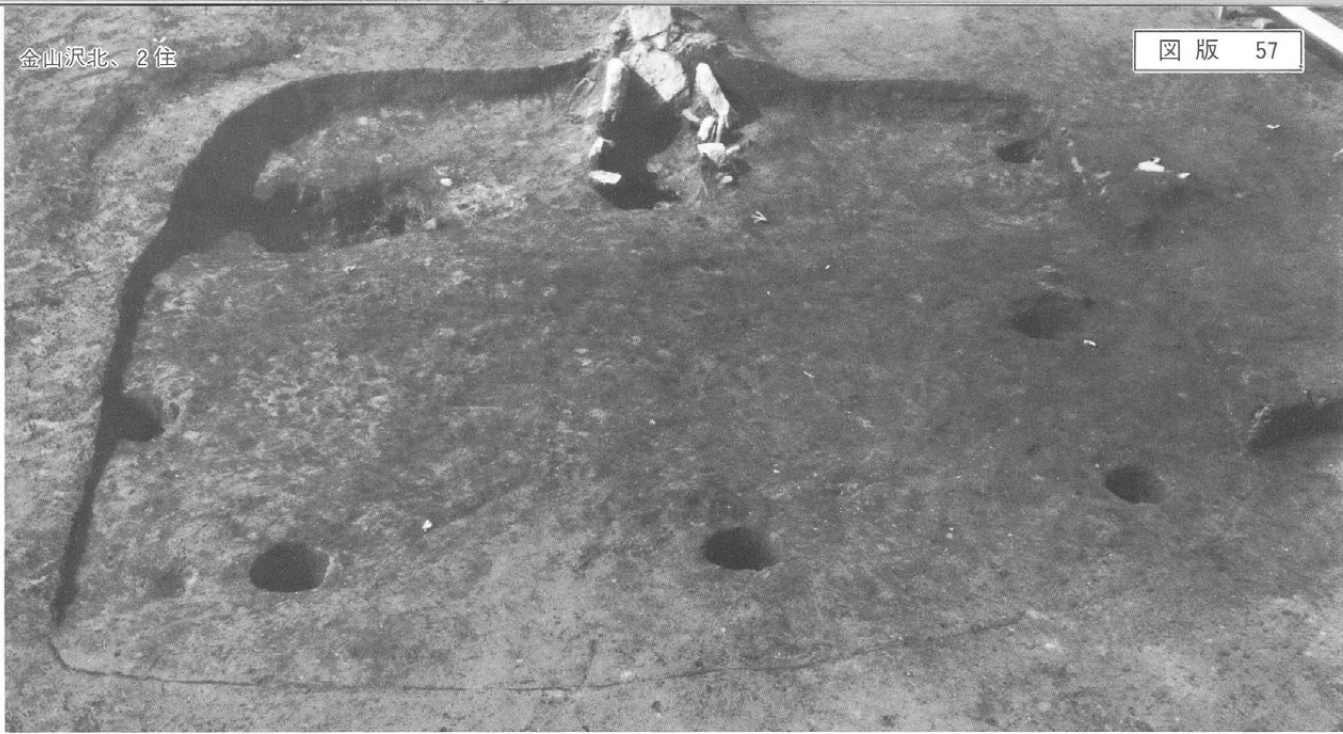
③



③



集石 3



金山沢北、2住



金山沢北、3住





1-a類



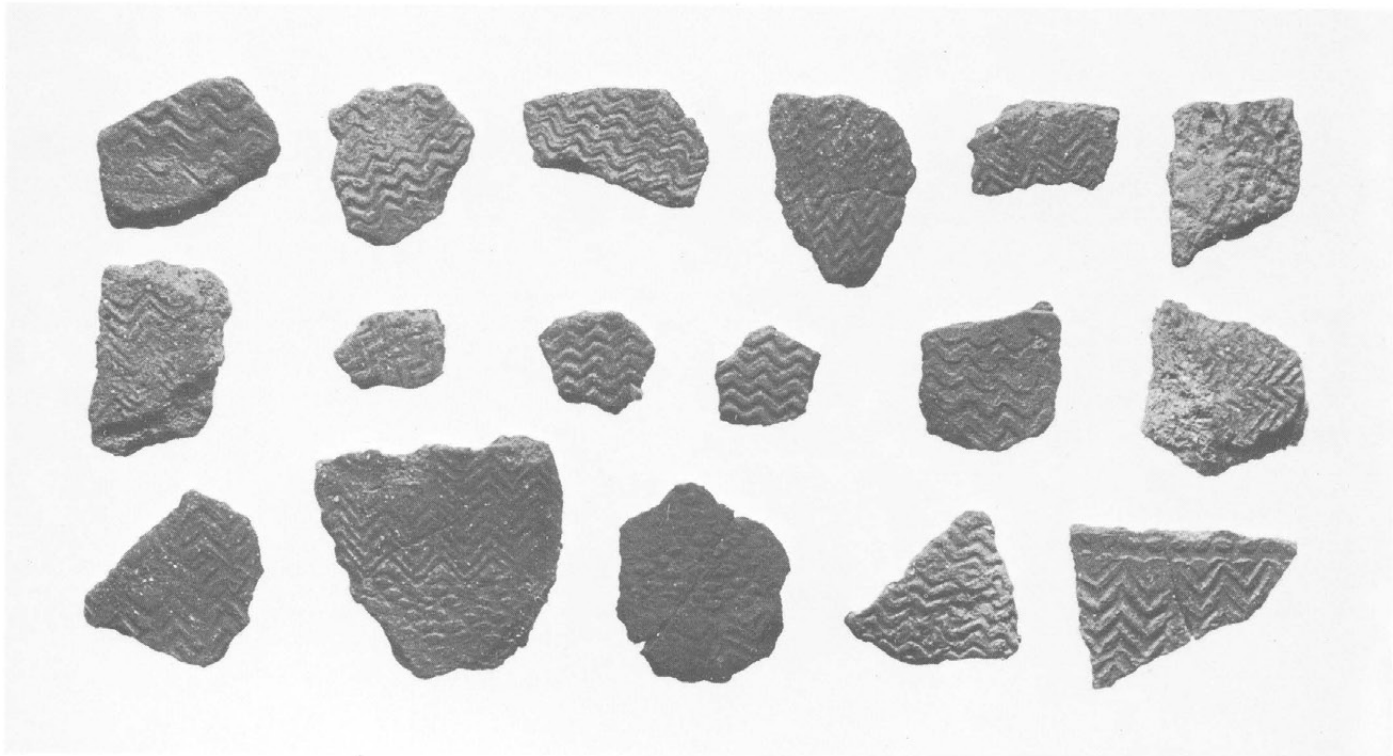
1-b類

金山沢北遺跡縄文時代早期土器(2) 1/2



2-a類

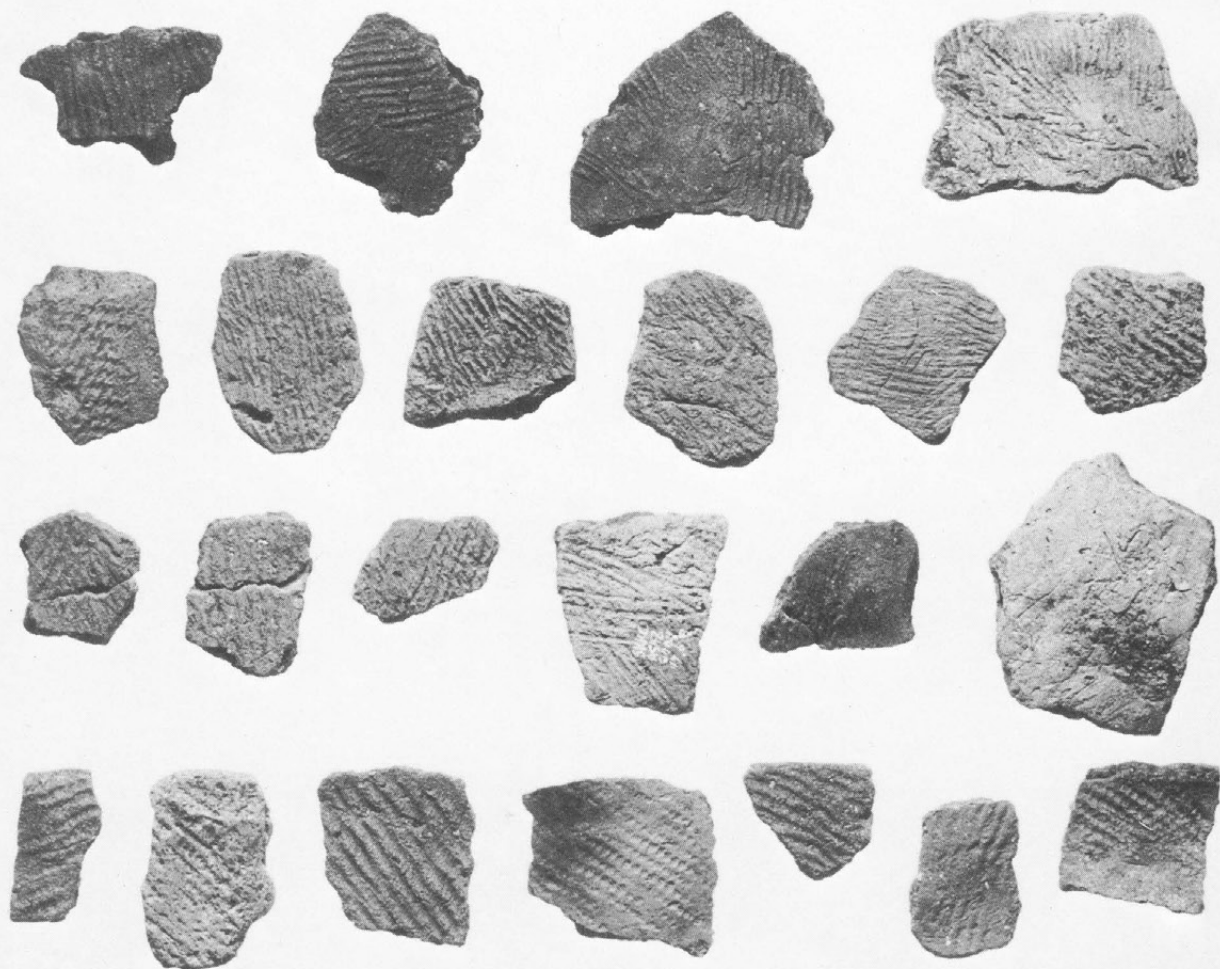
1



2-b類

土壤8出土炭化物



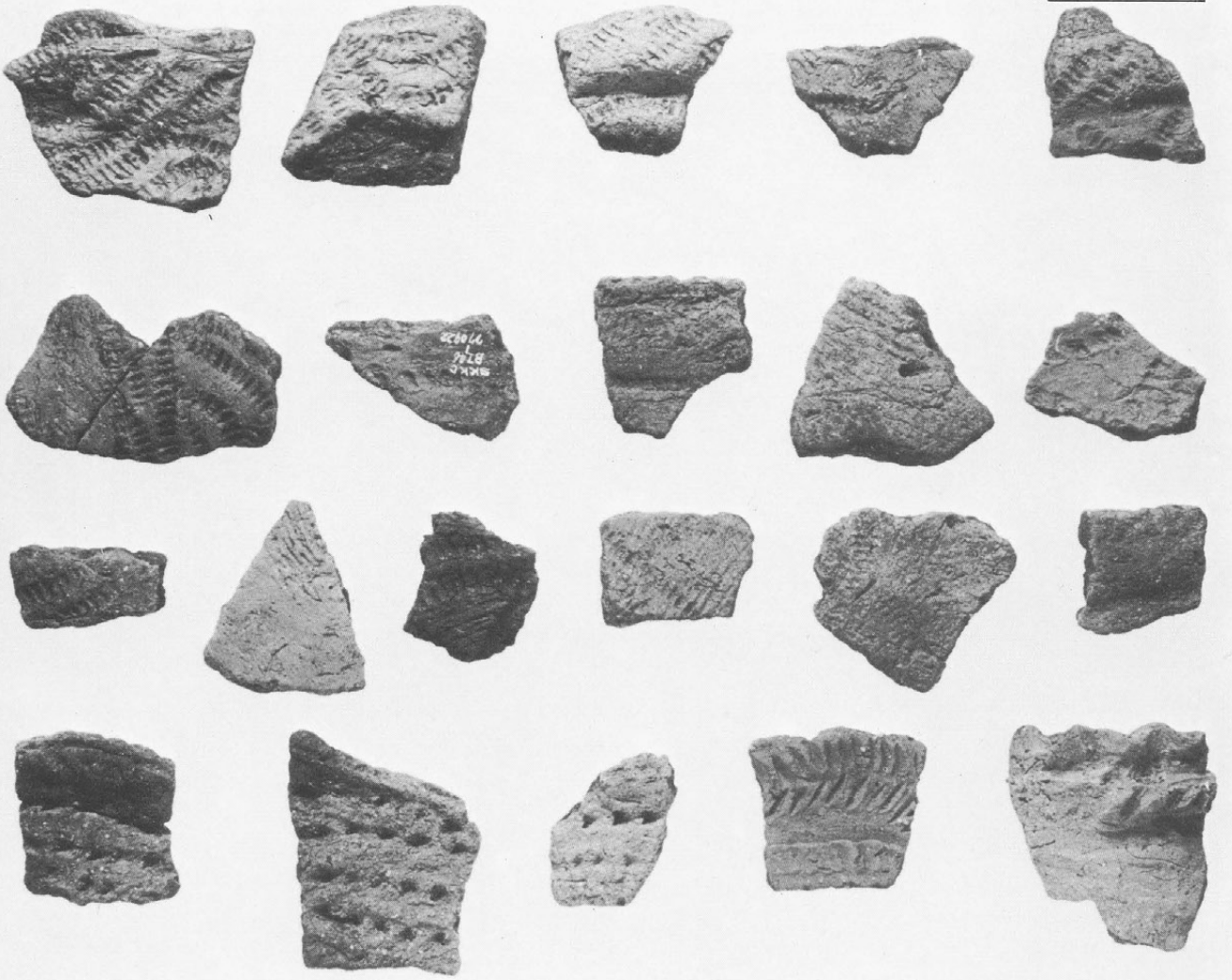


5・6類表

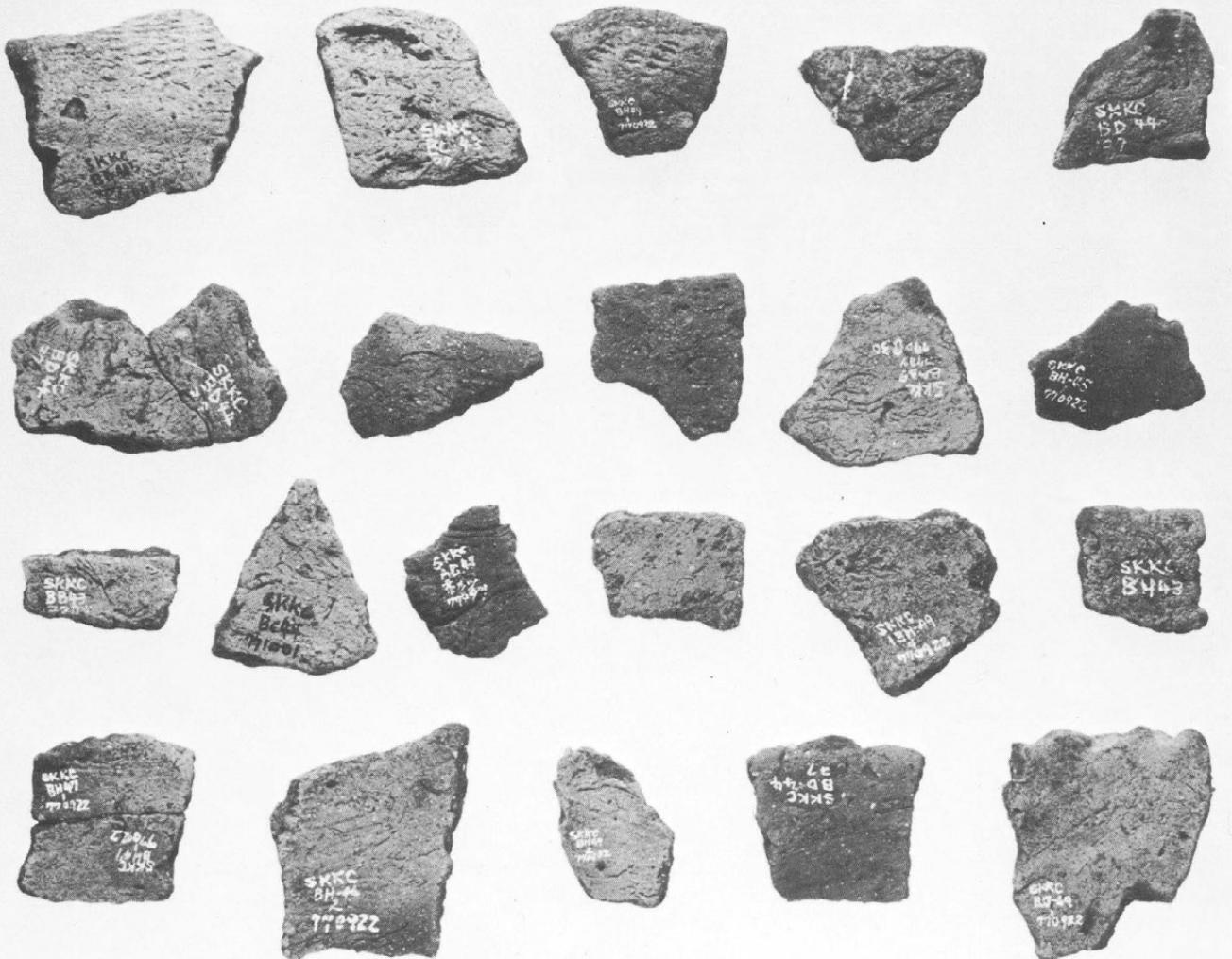


5・6類裏

金山沢北遺跡縄文時代早期土器(4) 1/2

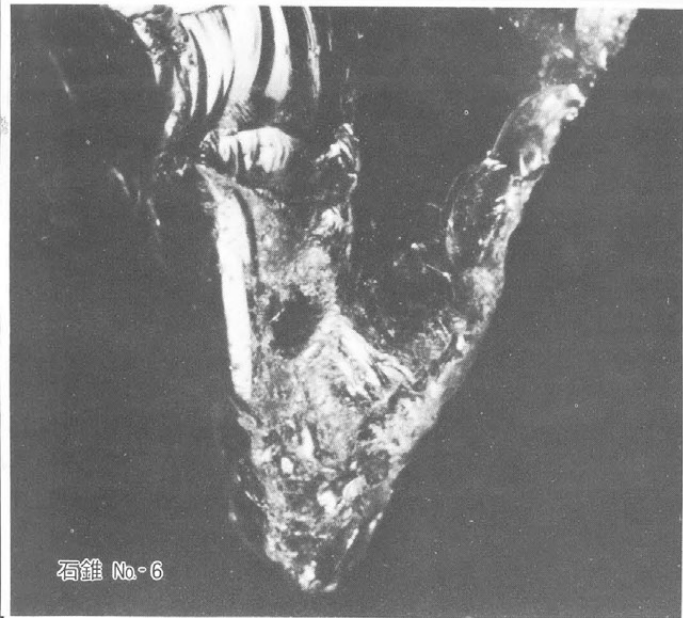


3・4 類表



3・4 類裏

石鏃・石錐・石匙・使用痕のある剥片(約1:1) 石錐使用痕拡大写真(7倍) 石匙使用痕拡大写真(4倍)

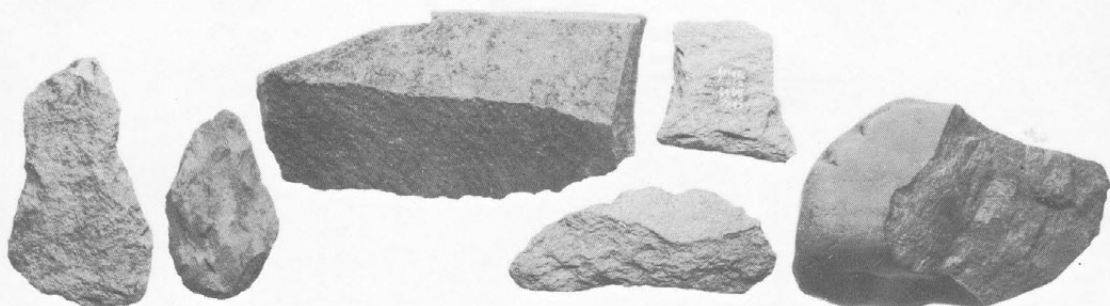


石錐 No. 6

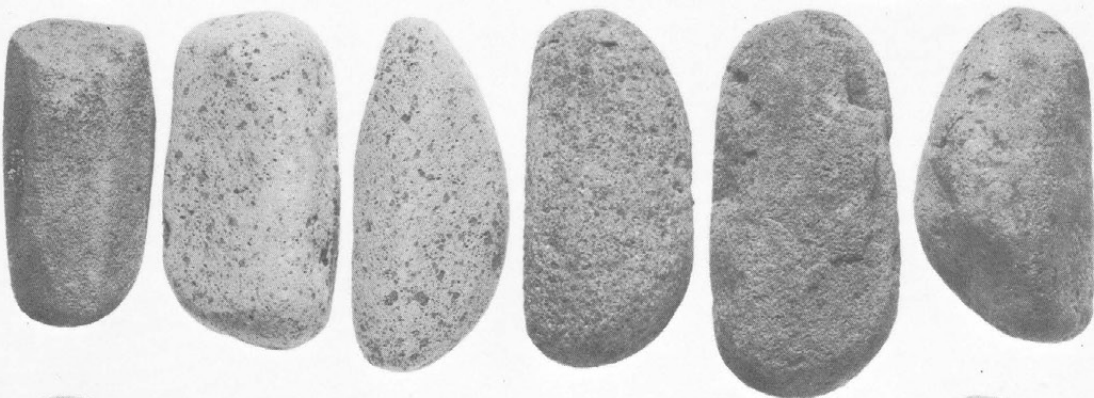


石匙 No. 8

打製石斧
横刃型石器



特殊磨石



磨石



(1:3)

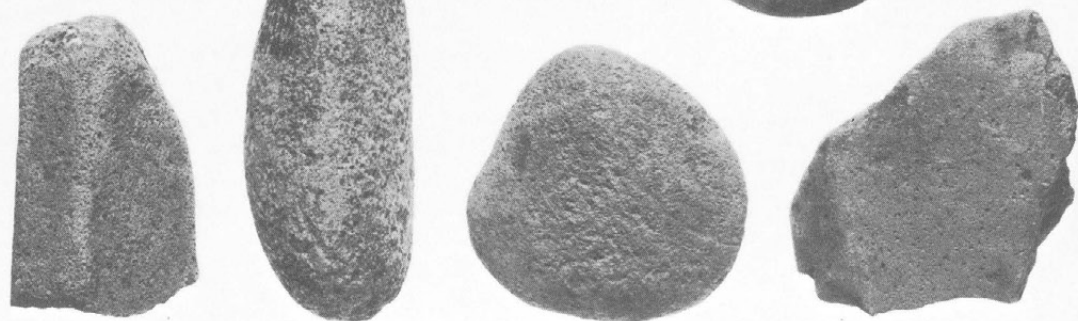
凹石



凹石



敲石
石皿



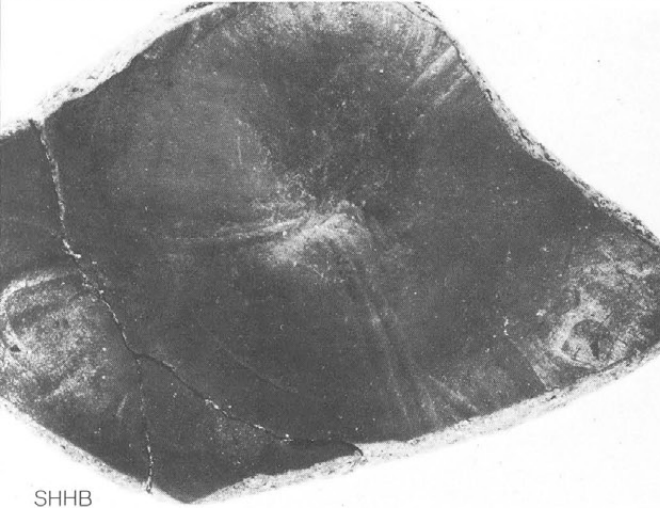
(1:3)



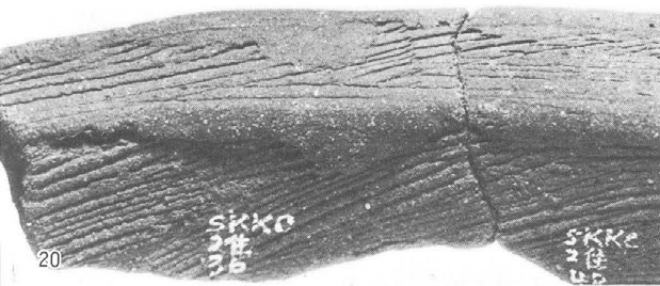
SHHB5



SHHB



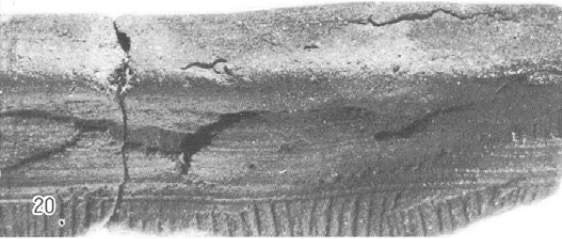
SHHB



20

SKKO
21
25

SKKO
21
25



20

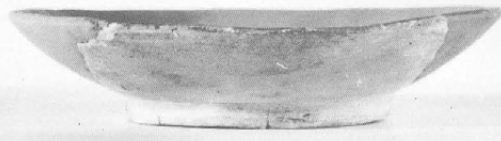


26

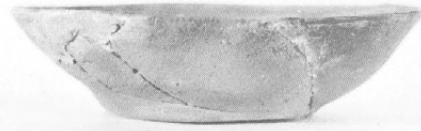
1



2



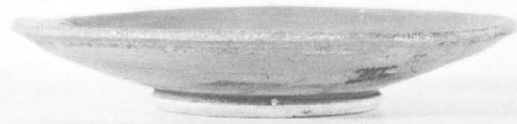
3



12



15



22



SHHB 5



26

長野県中央道埋蔵文化財包蔵地発掘調査報告書

——茅野市・原村その3 昭和51・52年度——

昭和56年3月20日 印刷

昭和56年3月25日 発行

編 集 長野県中央道遺跡調査団

発行者 日本道路公団名古屋建設局
長野県教育委員会

印刷所 長野市西和田470
信毎書籍印刷株式会社

〔非売品〕

