

左：1 SK072

2・3

SB16

右：押型文土器



1～5 るつぼ

6・7 土製
円盤



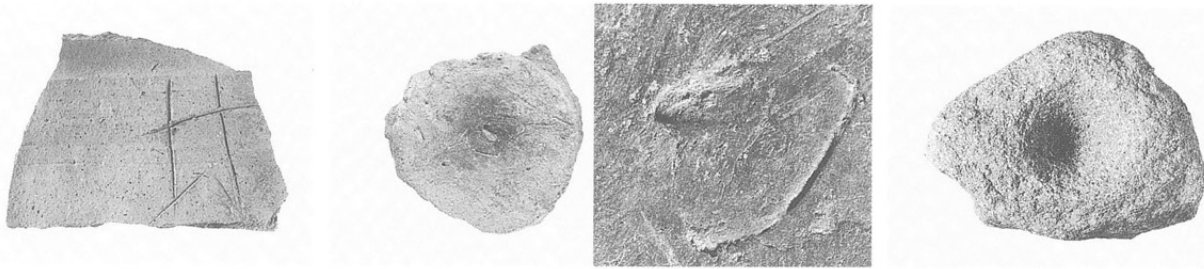
左：SB18

刻書土器

中央：SB04

靱痕土器

右：石鉢



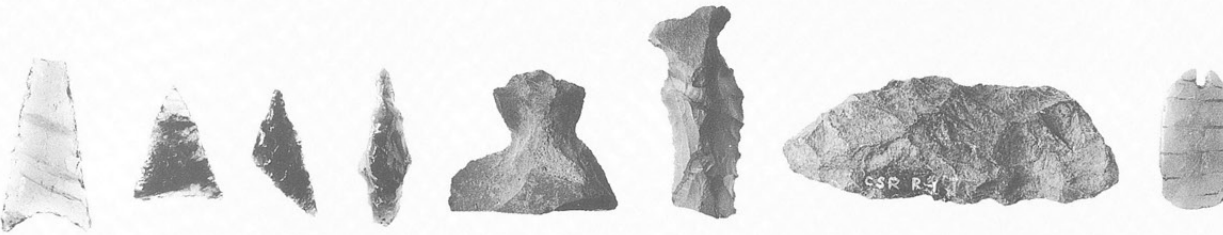
石鏃、石錐

石匙、

スクレイパー

石製垂飾

(SB10)

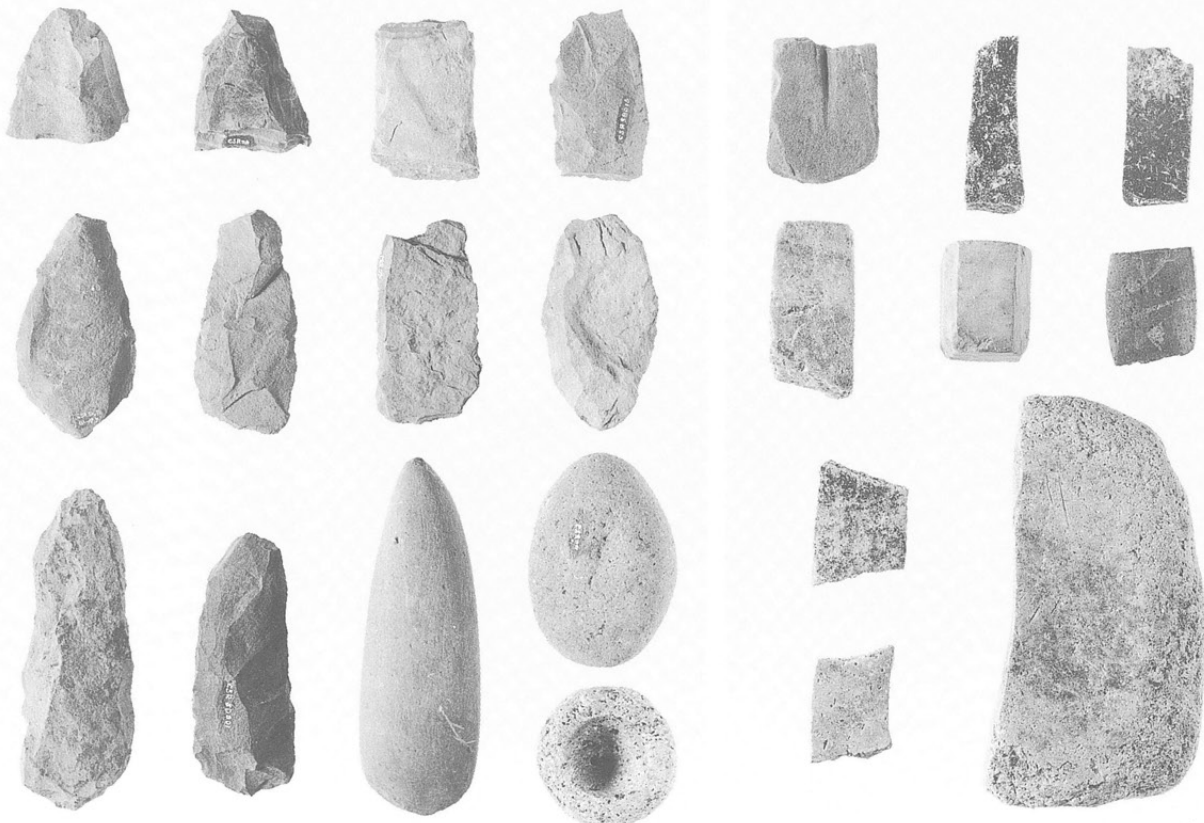


左：打製石斧

磨製石斧

磨石、石鉢

右：砥石



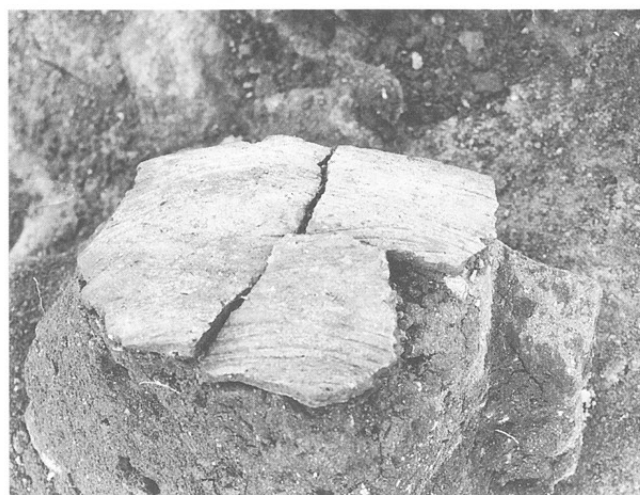
遺跡全景

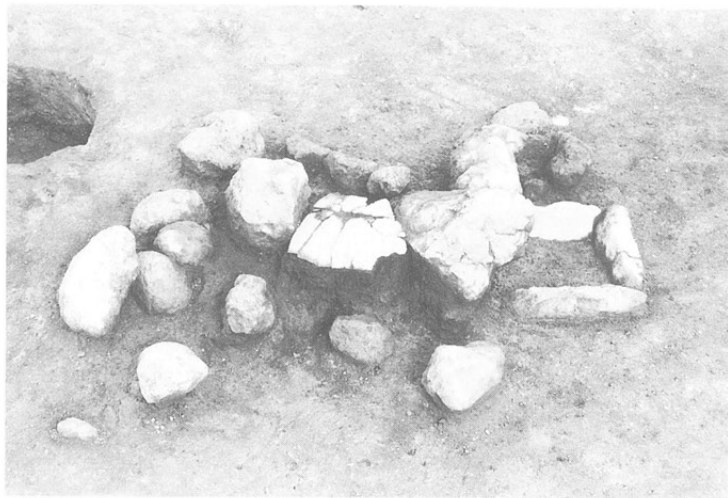


調査範囲
航空写真

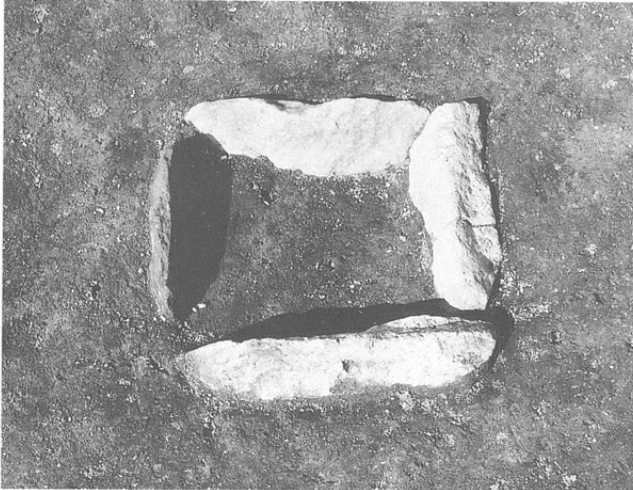


左：SB12
縄文土器
出土状況
右：SB13

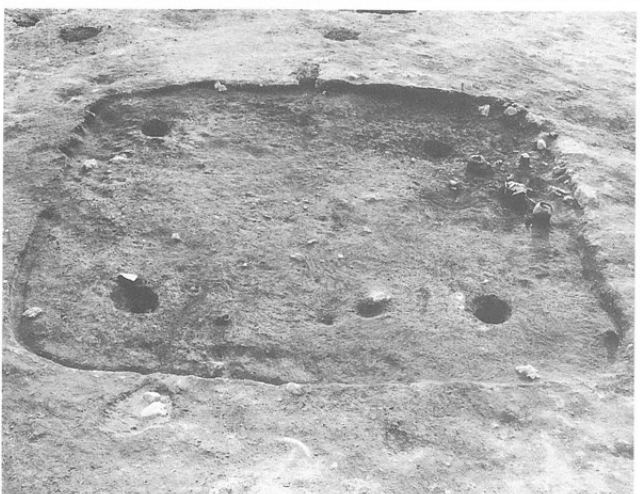




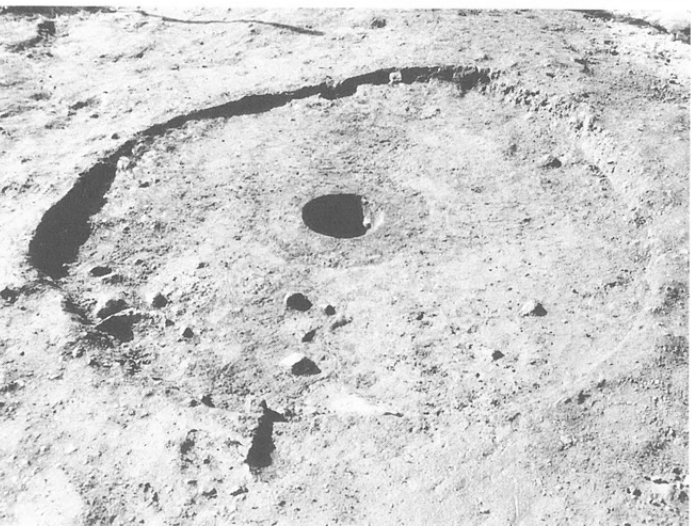
S B08
左：全景
右：石囲炉



S B08
左：石囲炉
右：縄文土器
出土状況

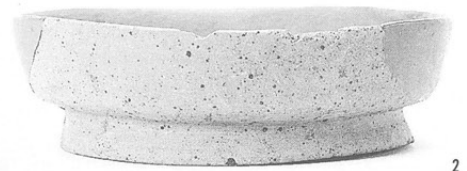
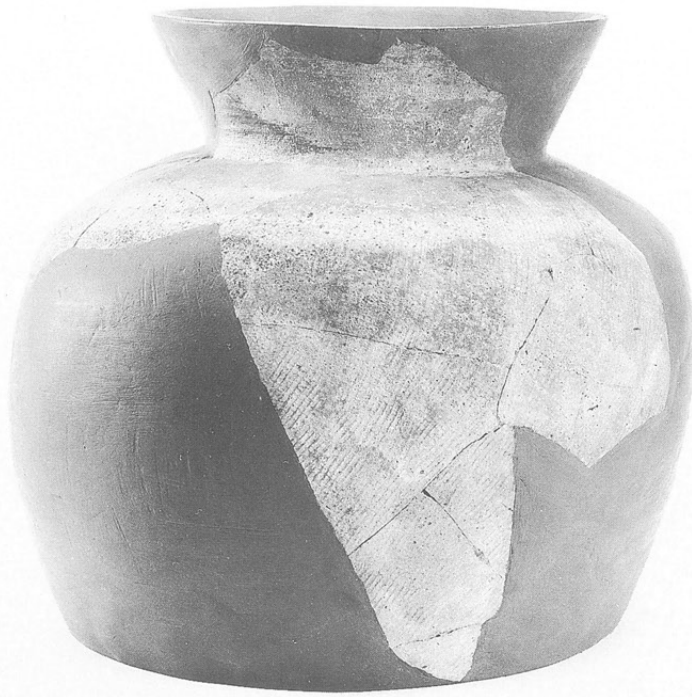


S B21
左：炭化材
出土状況
右：完掘



S B28
左：全景
右：縄文土器
出土状況

1・2 SB01



2

3~5 SB02



3

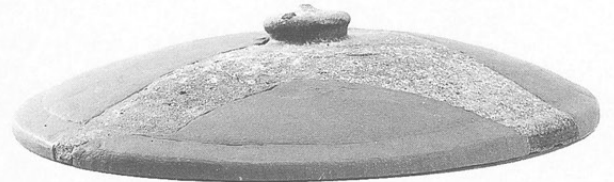


4

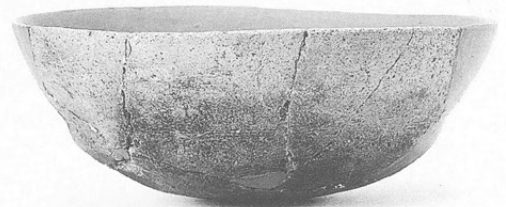
6~10 SB06



6



5



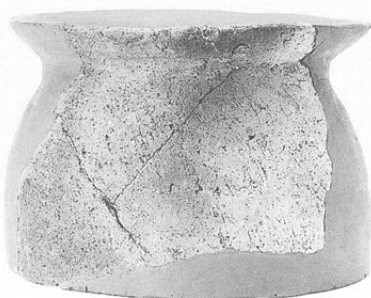
9



7



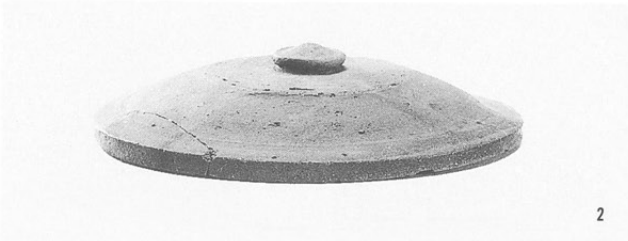
10



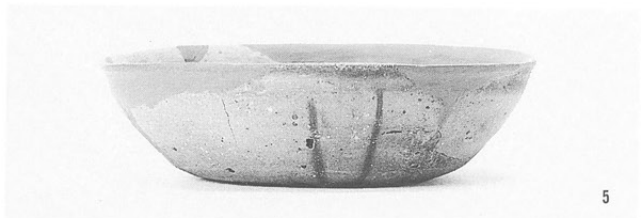
8



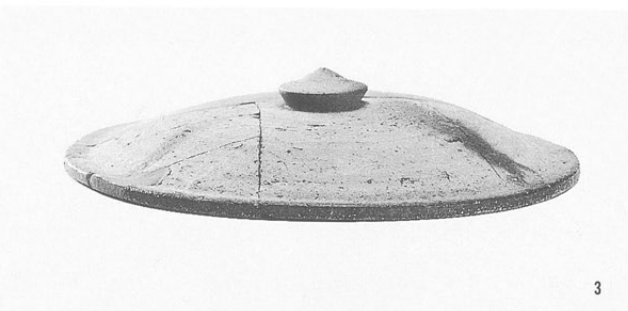
1



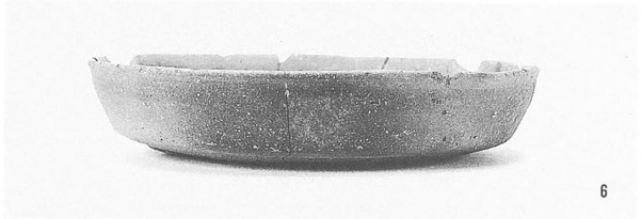
2



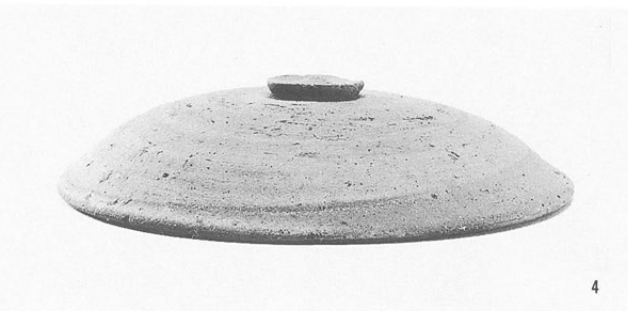
5



3



6



4



7



8

1 ~ 3 SB09

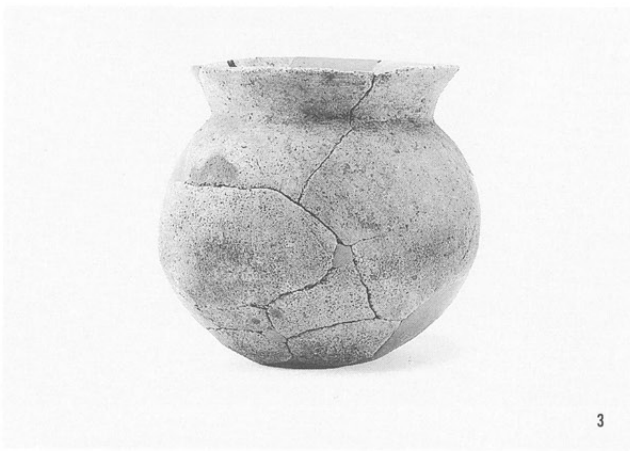
4 ~ 6 SB08



1



2



3



4



5



6

7 SB07

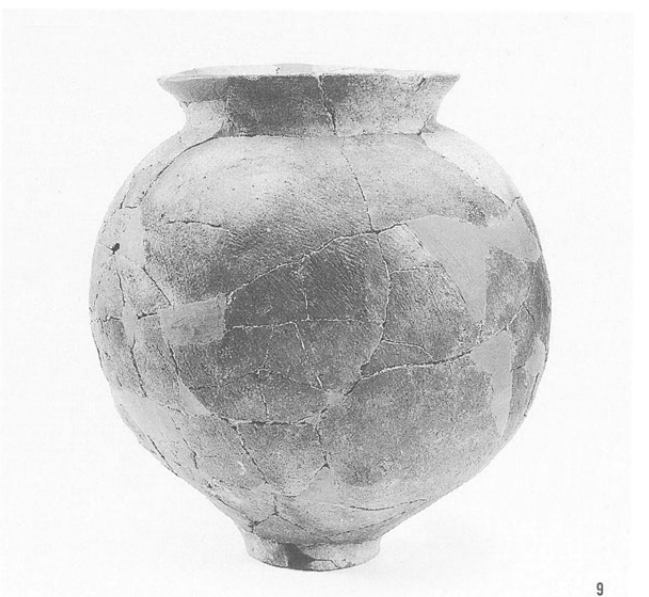
8 · 9 SB10



7



8



9

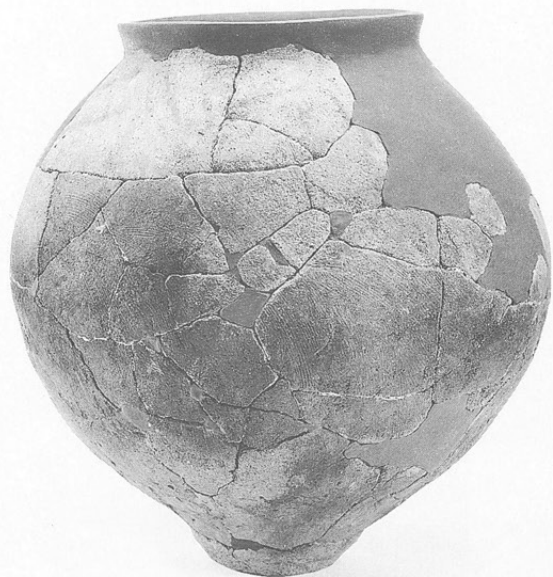
1・2 SB10

3~5 SB12

6 SB18

7・9 SB24

8 SB20



1



2



3



4



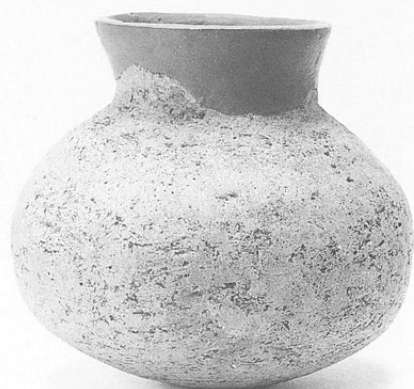
5



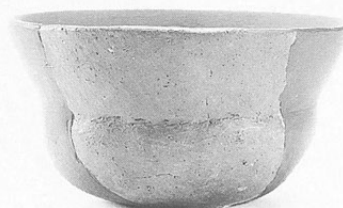
6



7

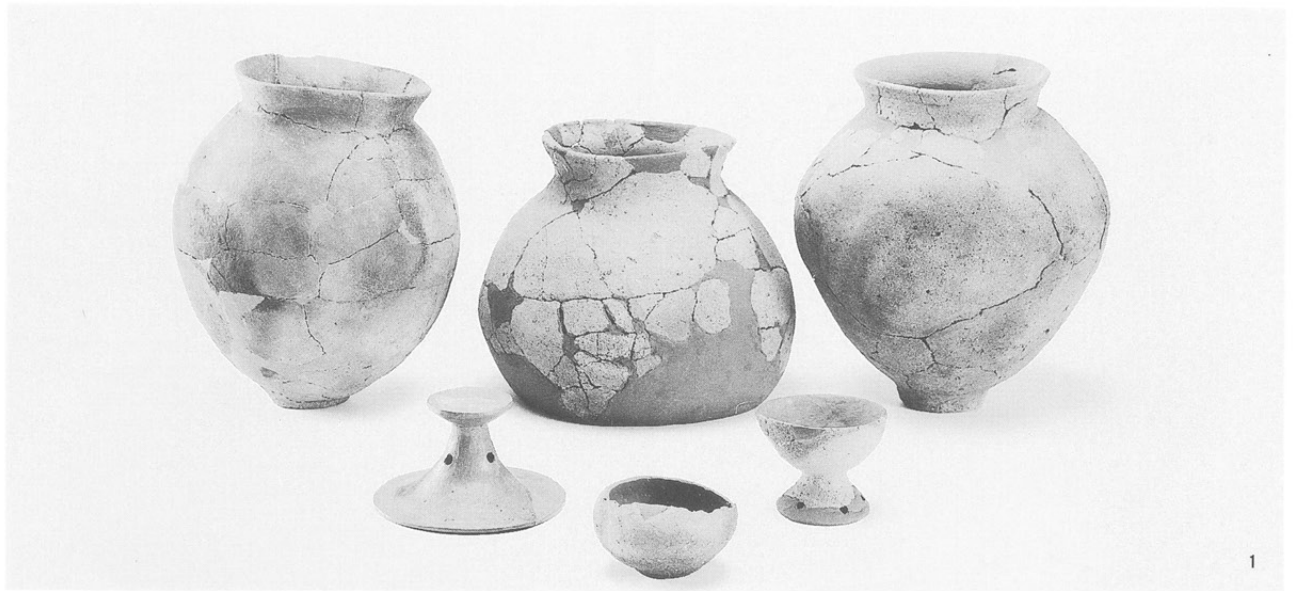


8



9

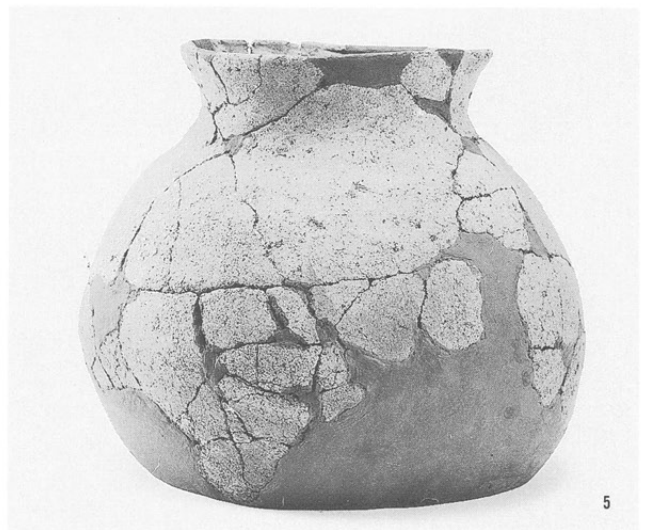
1~7 SB21



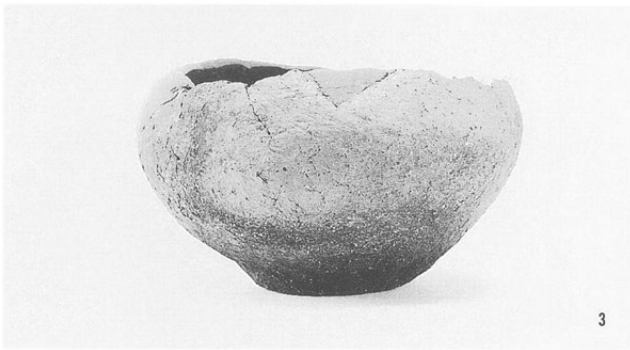
1



2



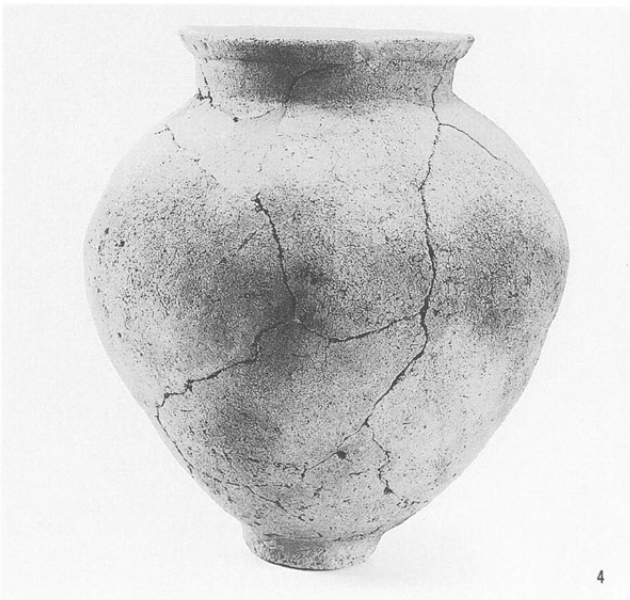
5



3



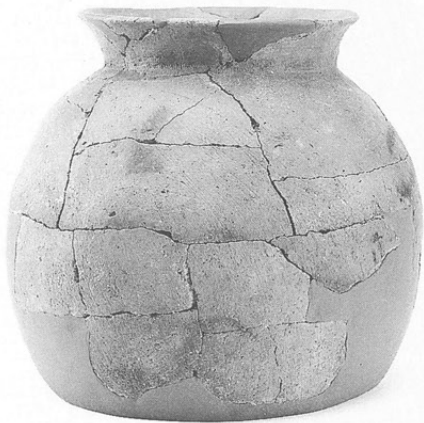
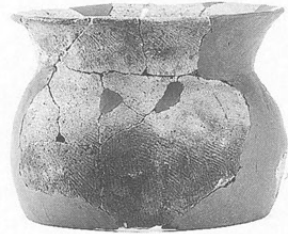
6



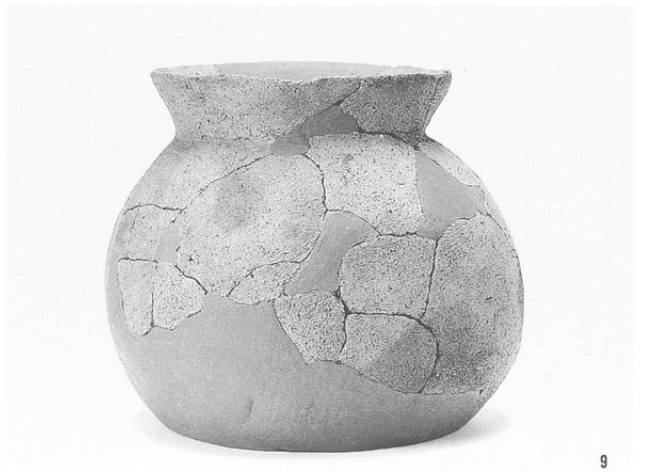
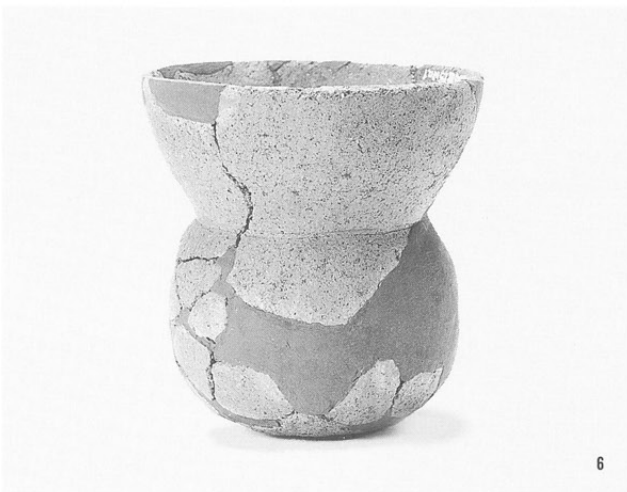
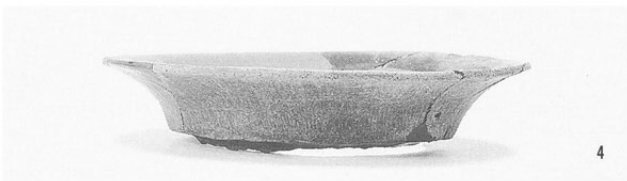
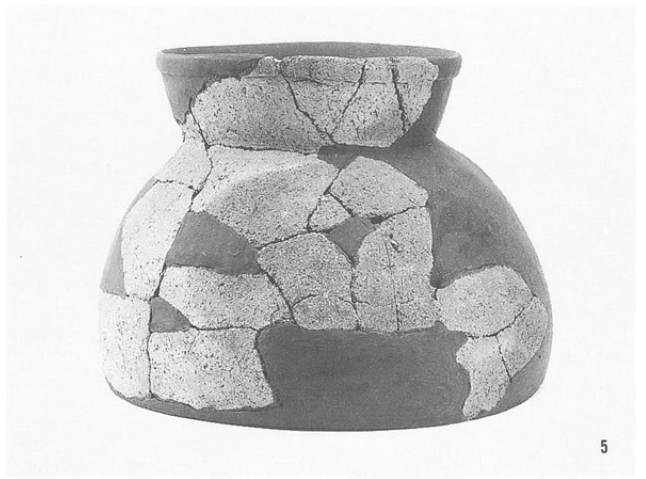
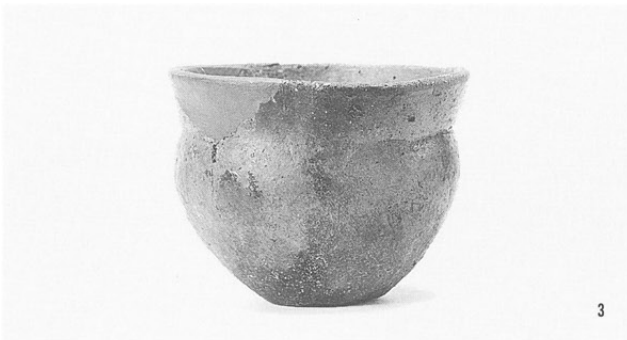
4

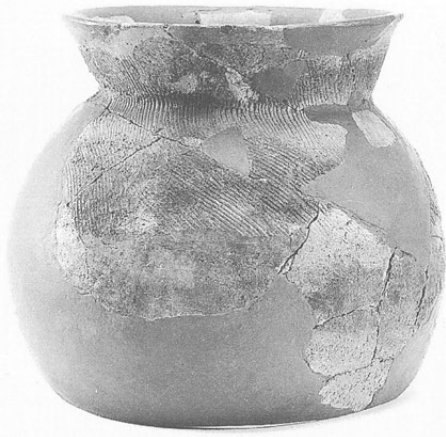


7



1・2 SB16
3～6 SB25
7～9 SB27





1



2



3



4



5



6

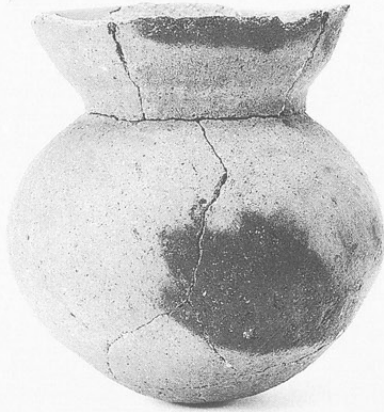
- 1 SB30
- 2 SB31
- 3 SK12
- 4 SK34
- 5 SK54
- 6 SK55
- 7・8
- Lグリッド
- 9 Qグリッド



1



2



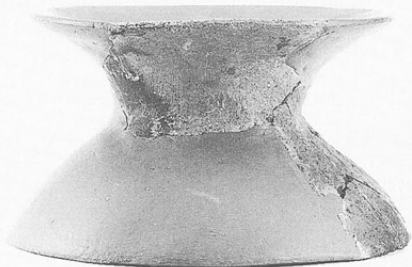
3



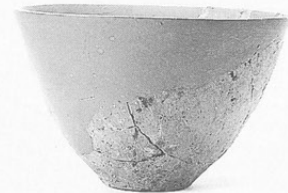
4



5



6



8

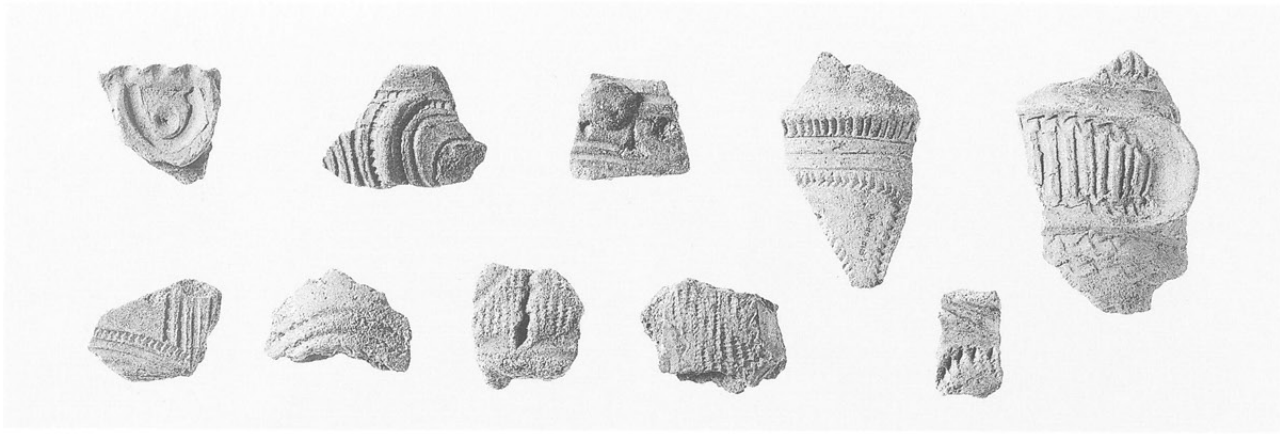


7



9

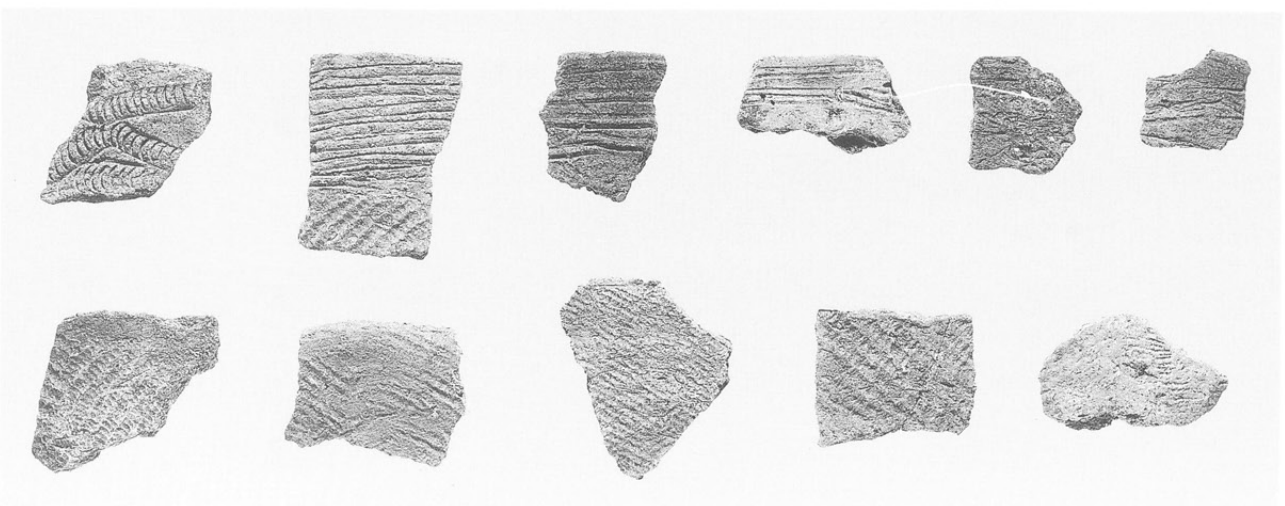
S B08



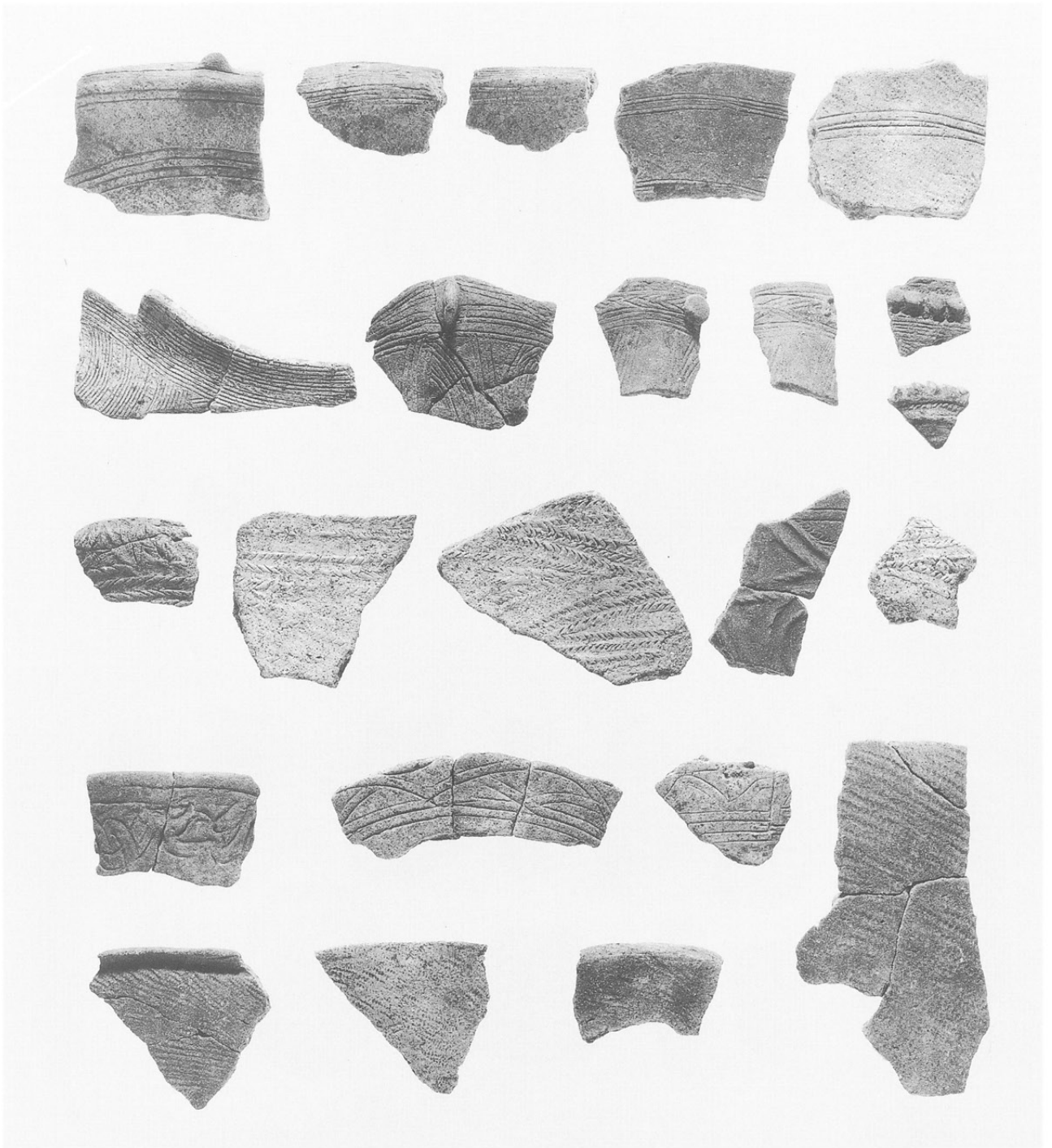
S B12



S B13



S B16



1 有孔浅鉢 (S B25)

2 土偶脚 (S K01)

3 耳栓 (S B08)

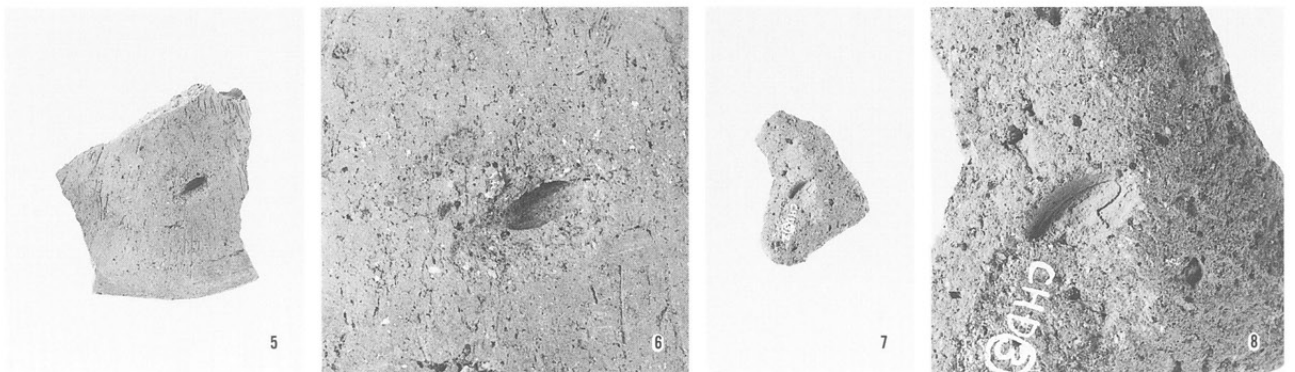
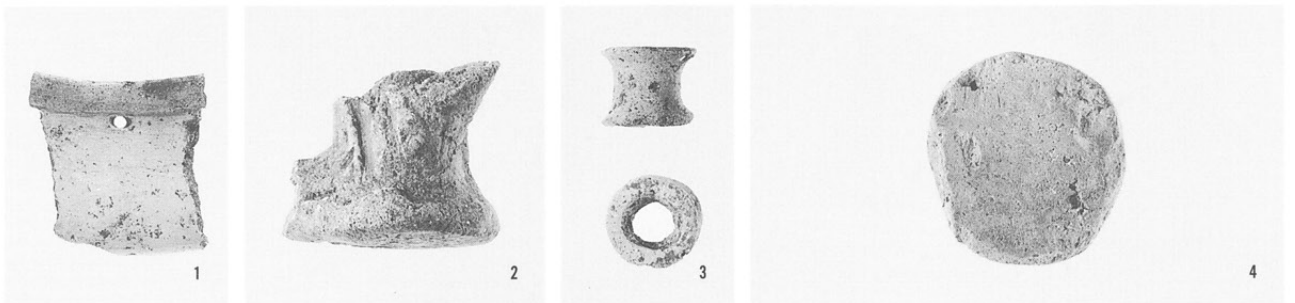
4 土製円盤

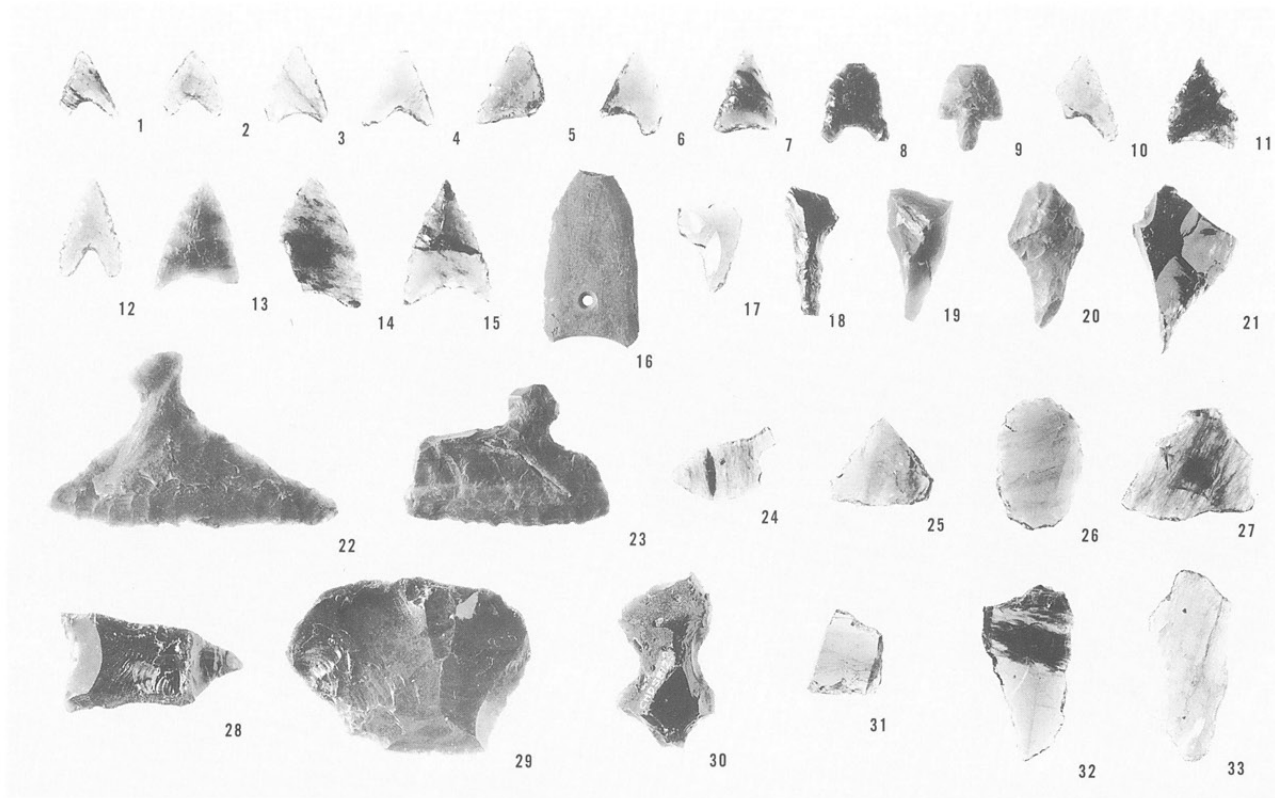
5 糺痕土器 (S B25)

6 同拡大写真

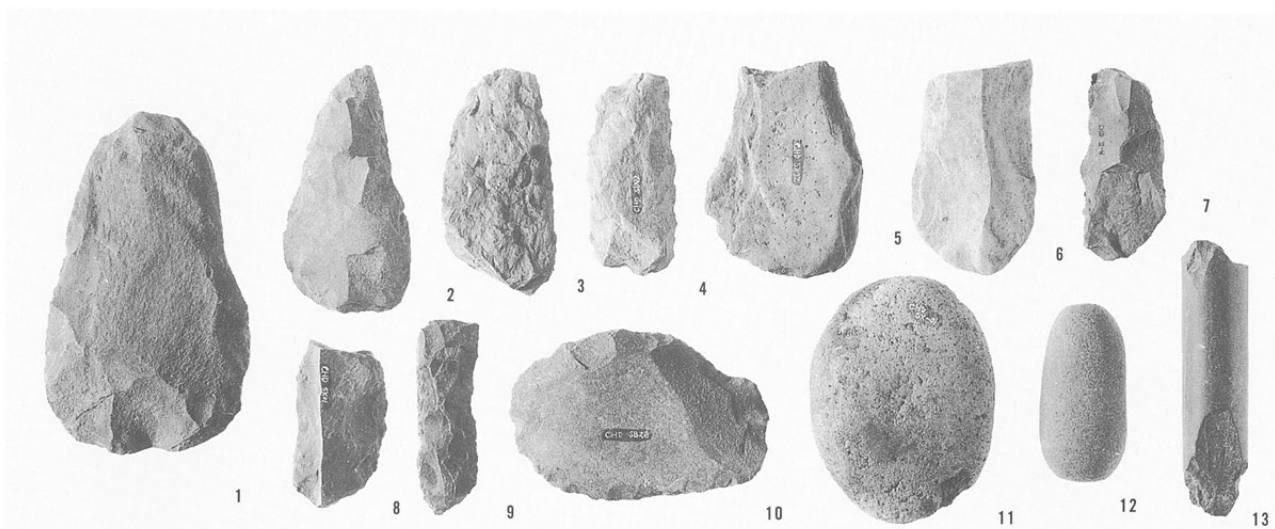
7 糺痕土器

8 同拡大写真

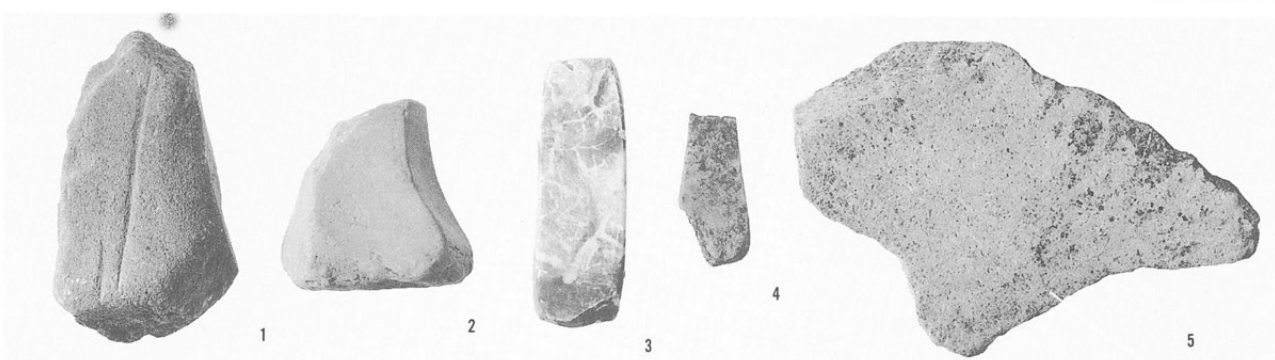




1～15 石鏃
 16 磨製石鏃
 17～21 石錐
 22～24 石匙
 25～27
 スクレイパー
 28・29 石核
 30 ノッチ
 31～33 UF



1～9
 打製石斧
 10 スクレイパー
 11 凹石
 12 敲石
 13 石剣

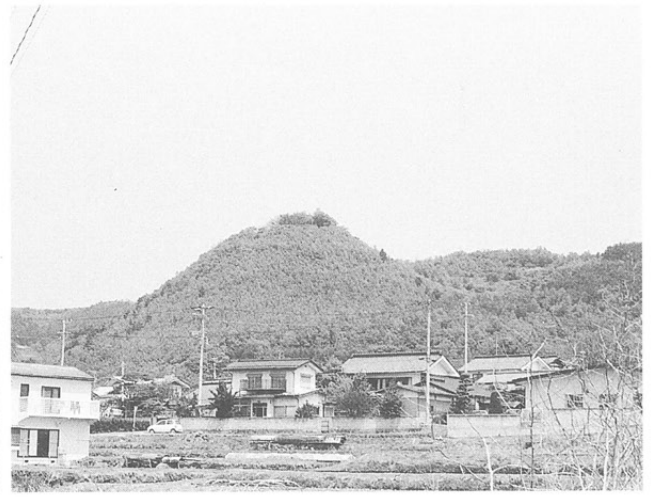


1～4 砥石
 5 台石



左：炉縁石
 (SB29)
 中央・右：石鉢

左：遠景
右：祢津城山

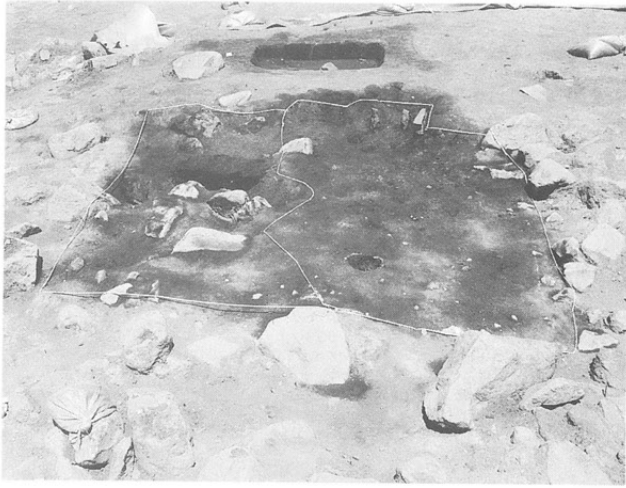


遺跡全景
航空写真



ダンプ道部分
航空写真





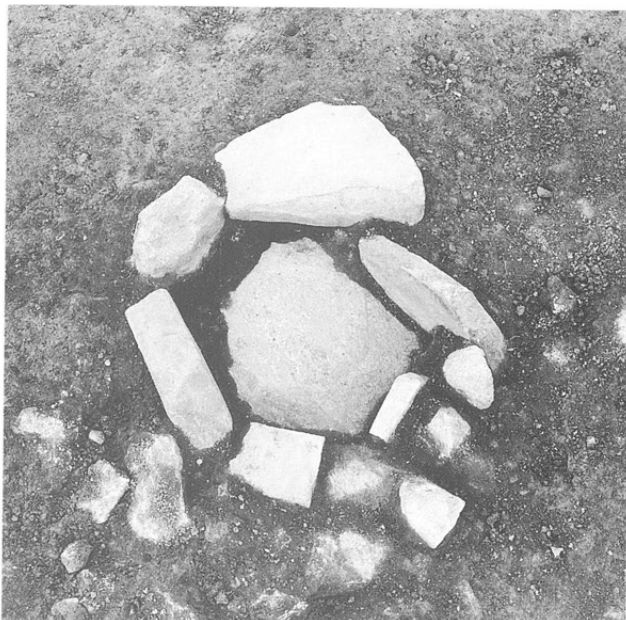
S B111
左：全景
右：カマド



S B117
左：全景
右：炉



左：S B109
石囲炉
右：S B119



S B119
左：石囲炉
右：土器出土
状況

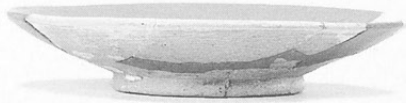
- 1・2 SB101
- 3・4 SB102
- 5 SB105
- 6 SB106
- 7 SB107
- 8・9 SB111
- 10~13 SB112



1



2



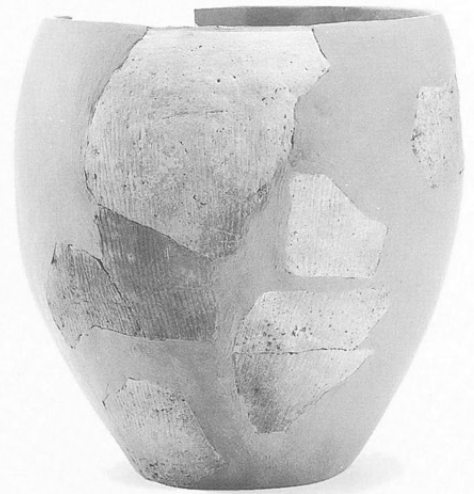
3



4



6



5



8



7



9



12



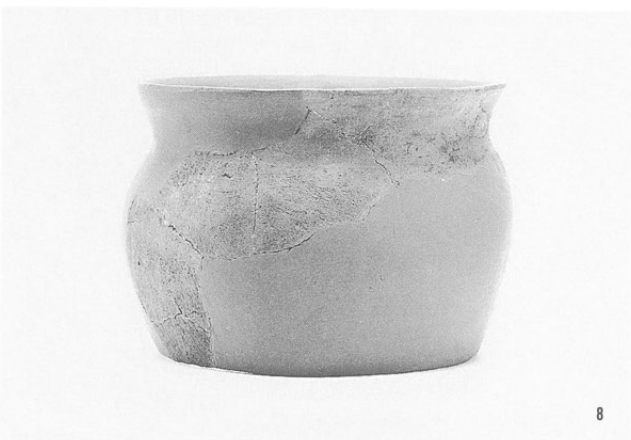
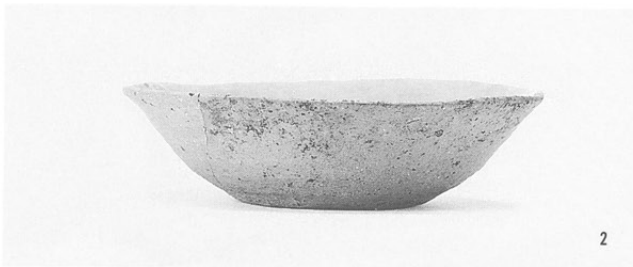
10



13



11



- 1 SB112
- 2~4 SB117
- 5 SB118
- 6 SB119





1



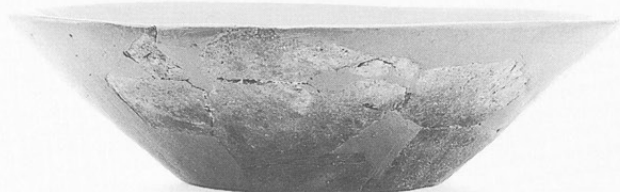
2



3



4



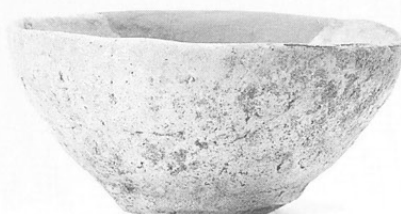
5



6



7



8

- 1・2 SB122
- 3 SK143
- 4～6 SD103
- 7・9 SD104
- 8 SF101



1



3



4



5



6



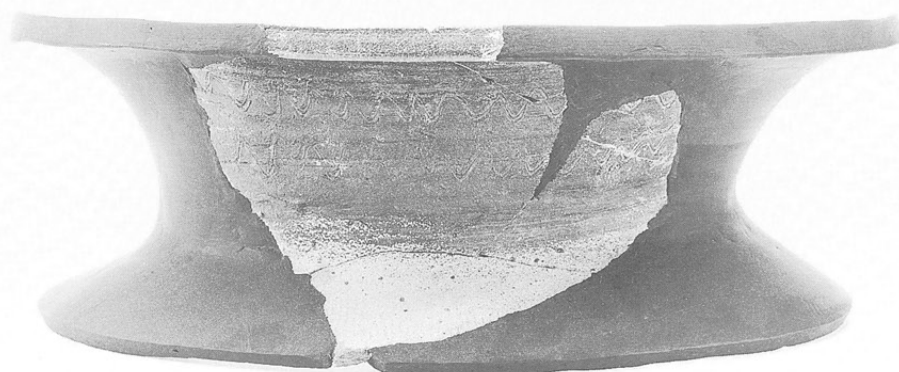
7



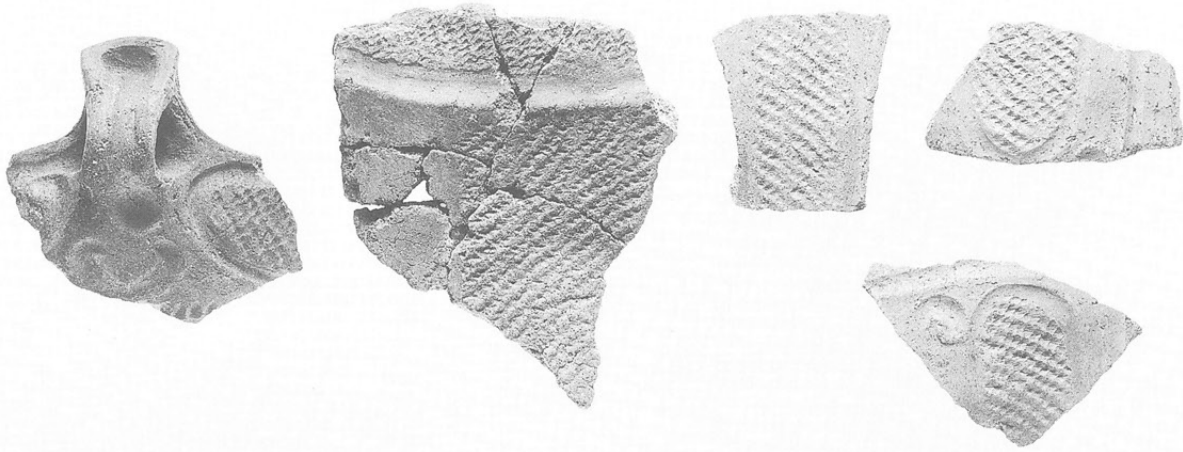
2



8

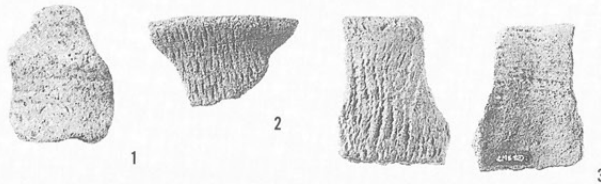


9



左：縄文時代
前期

右：1. 草創期
多縄文
2. 撚糸文
3. 表裏
撚糸文



1 土偶脚
2・3・5
耳栓
6 男根状
土製品



1



2



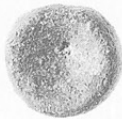
3



6



4

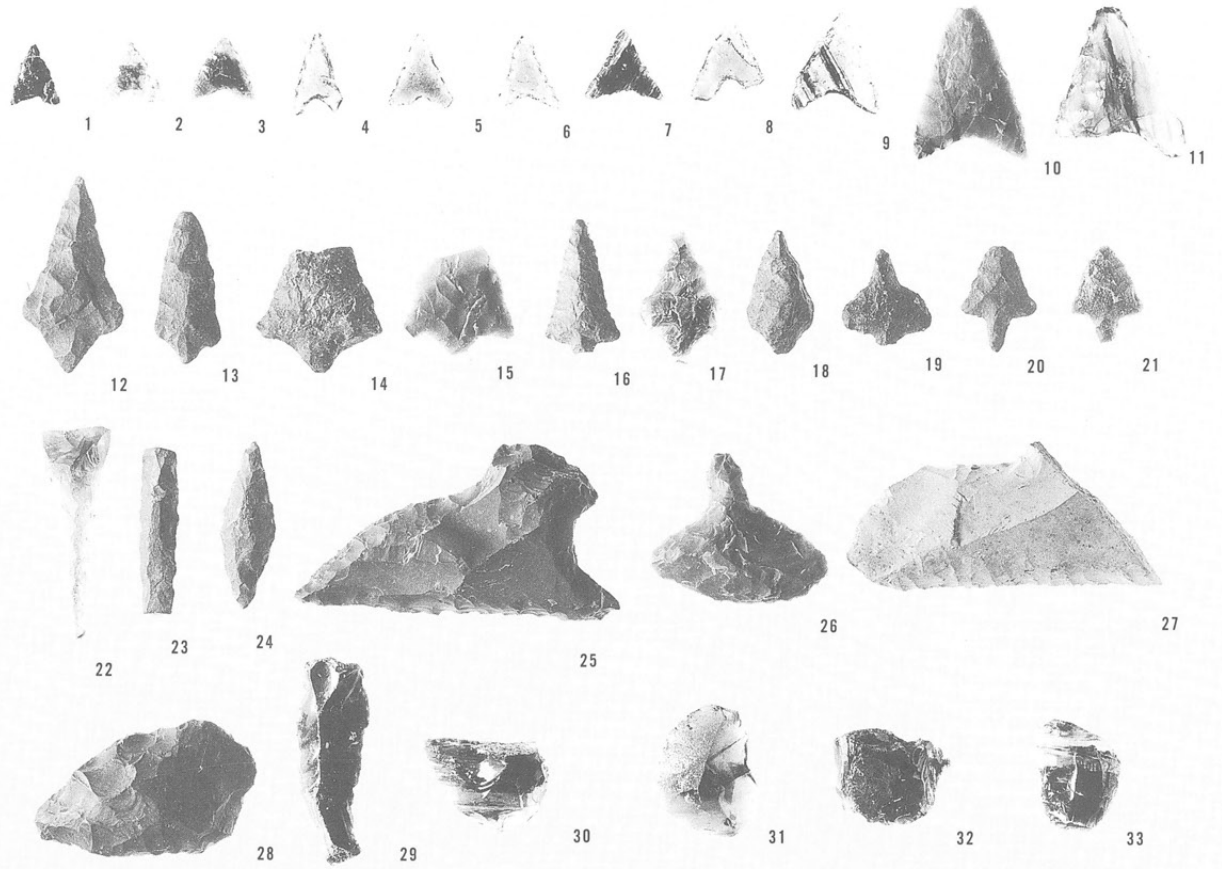


5

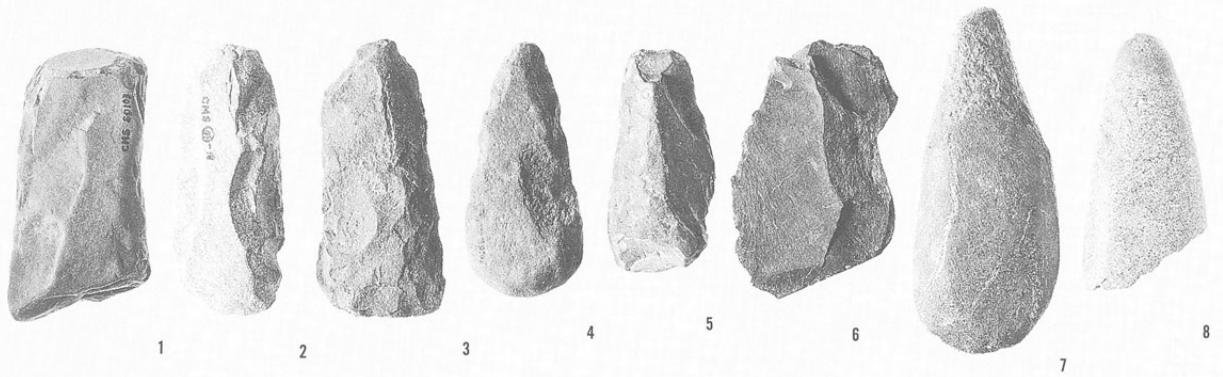


左：靱痕？土器
中央：同拡大
右：焼成後穿孔
(S B102)

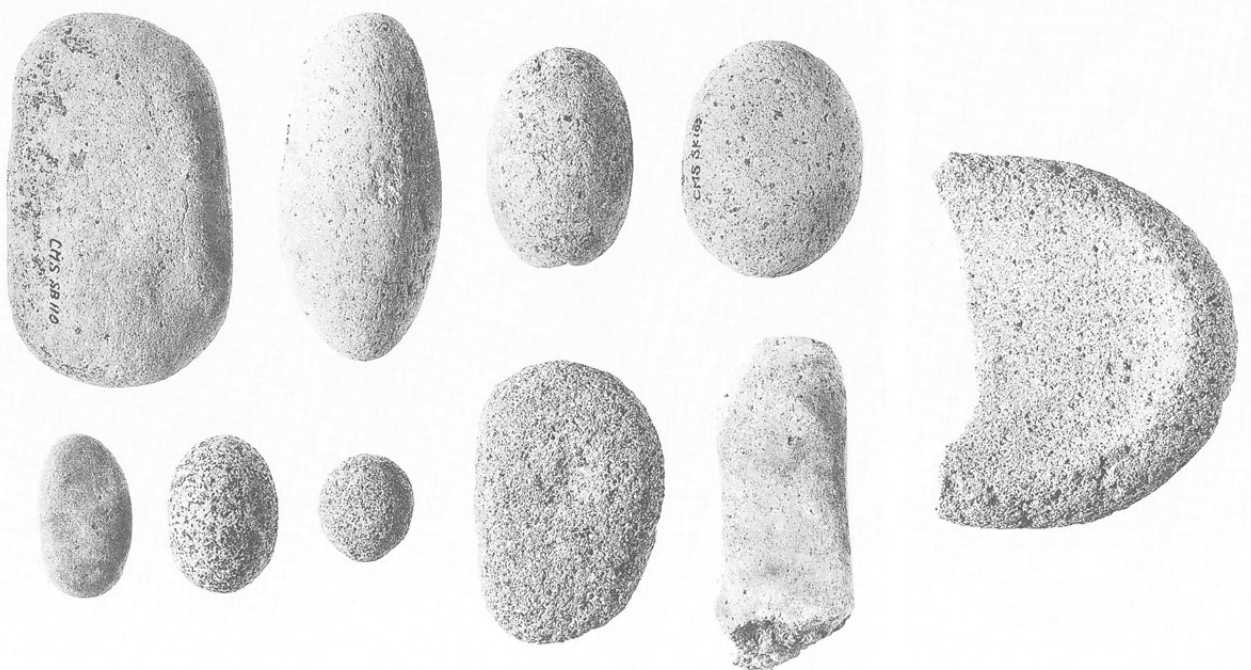
1～21 石鏃
12～21 有茎式
22～24 石錐
25～27 石匙
28～33
スクレイパー・RF



1～6 打製石斧
7・8 磨製石斧



左：磨石類
右：石皿





①区全景

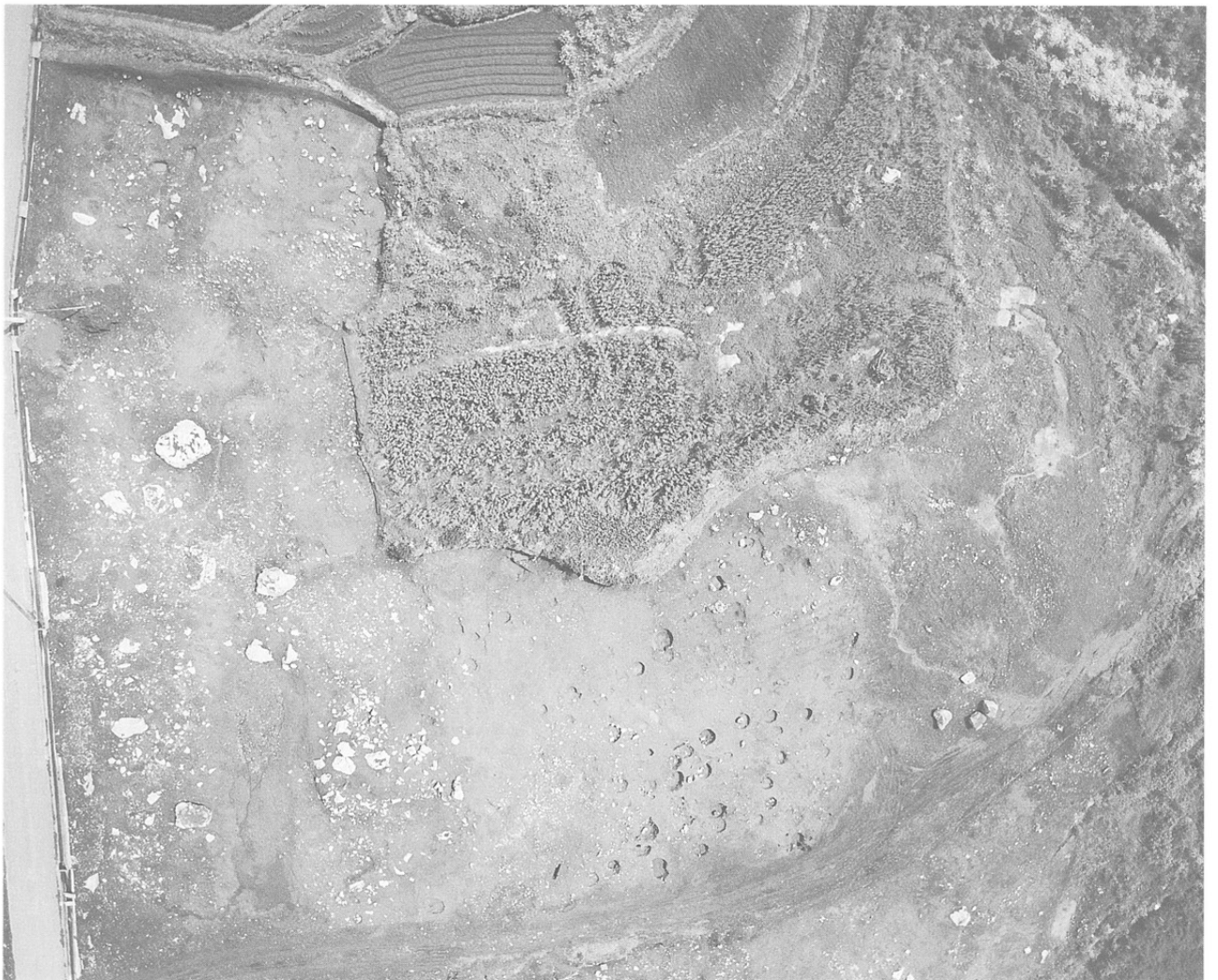


①区西全景

①区東全景



②区東全景



②区縄文土坑群



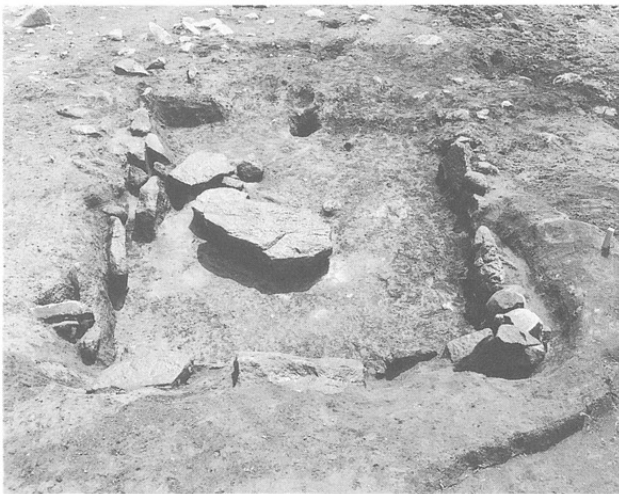
①区西中世堅穴
建物群



左：②区東
から見た
祢津城山
右：①区西
調査風景



左：S B16
右：S B23



左：S B42
右：①区東
調査風景

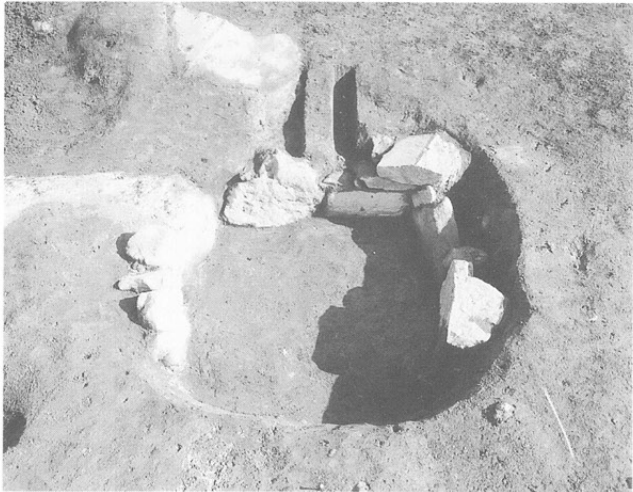


左：S B35
右：S B43





S B45
左：遺物出土
状況
右：完掘



左：S B44・47
右：S K224



左：S K201
縄文土器
出土状況
右：S K247ほか
中世
竪穴群



左：S K305
縄文土器
出土状況
右：現地説明会
風景

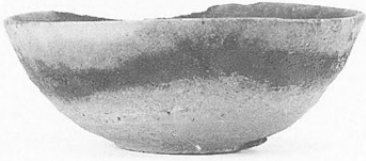




1



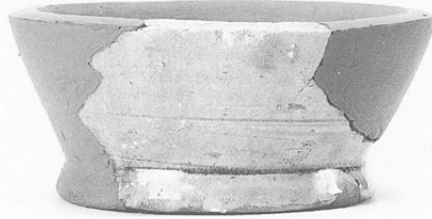
2



3



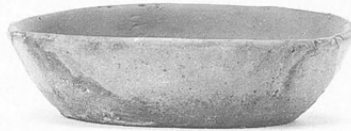
4



5



6



7



8



9



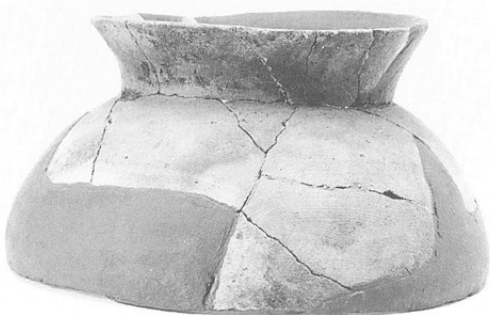
10



11



13



12



14

- 1 SB02
- 2・3 SB07
- 4 SB10
- 5 SB14
- 6 SB15
- 7・8 SB37
- 9・10 SB40
- 11 SB42
- 12~14 SB43

- 1 SB44
- 2・3 SB45
- 4 SB46
- 5 SB48
- 6 SB49
- 7 SB51



1 ~ 7 SB51
8 SK018
9 SK039
10・11 SK043
12 SK060



1



2



3



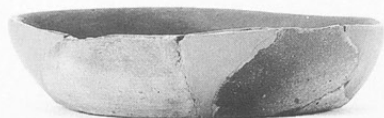
4



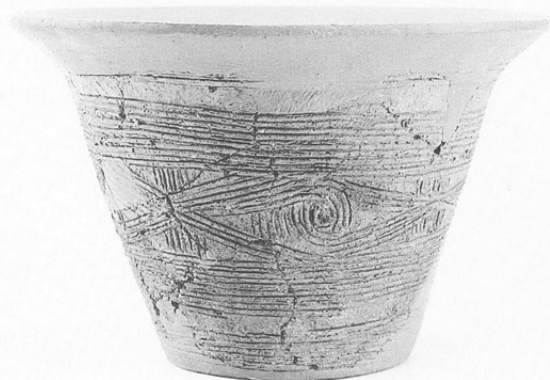
5



7



6



8



9



10

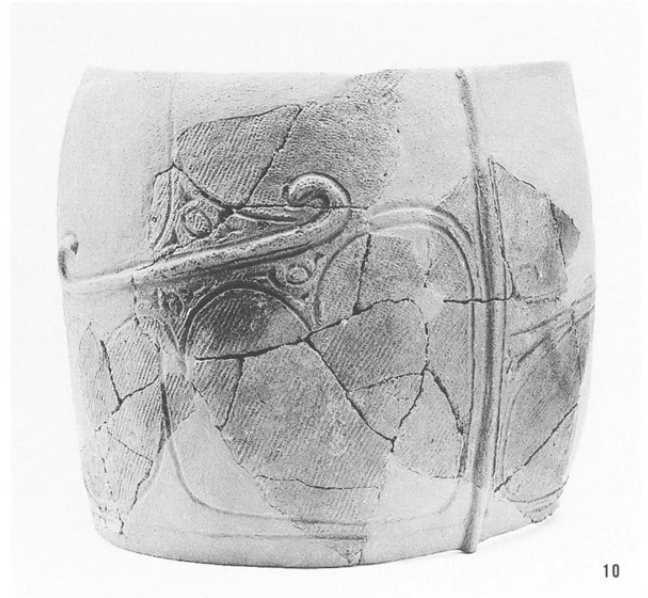
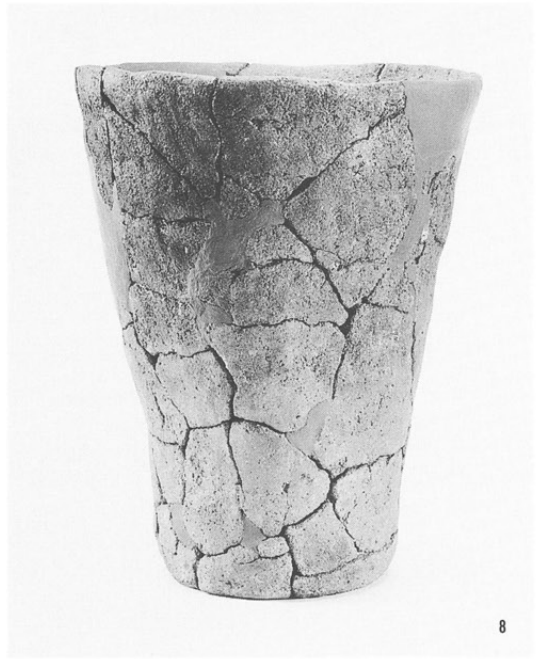
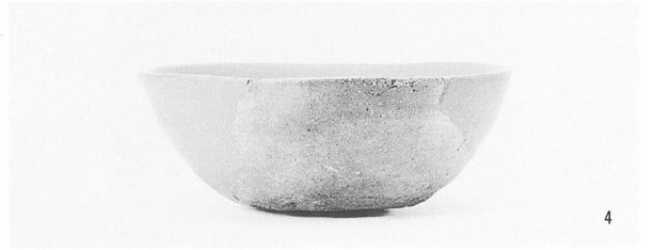


11



12

- 1 ~ 6 SK056
- 7 SK102
- 8 SK105
- 9・10 SK106



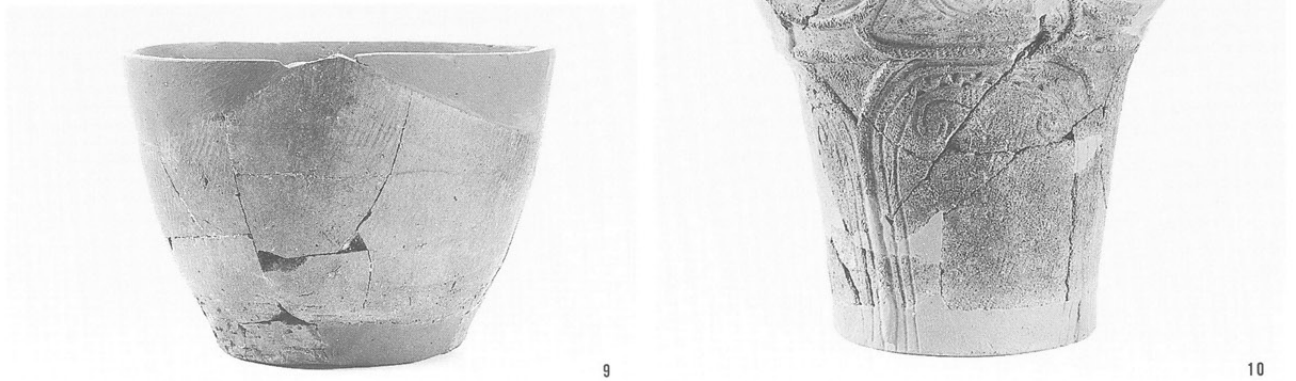
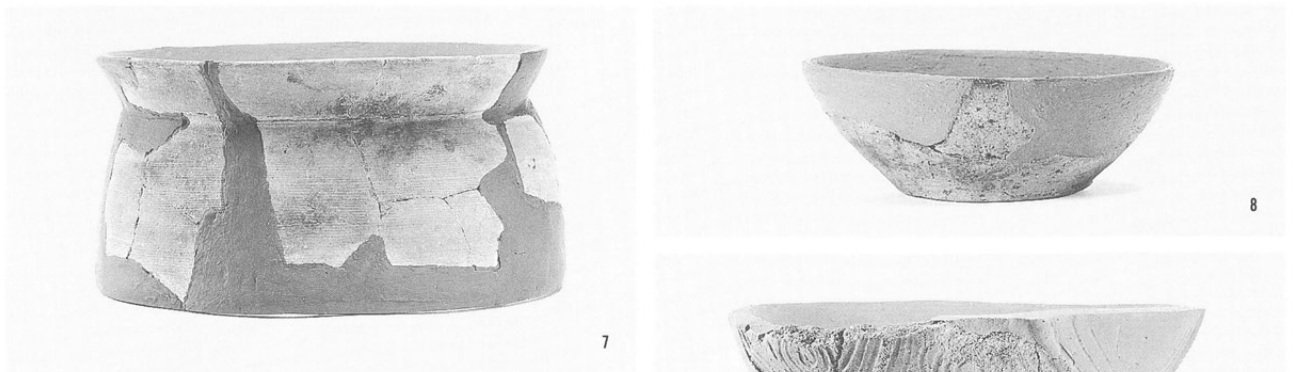
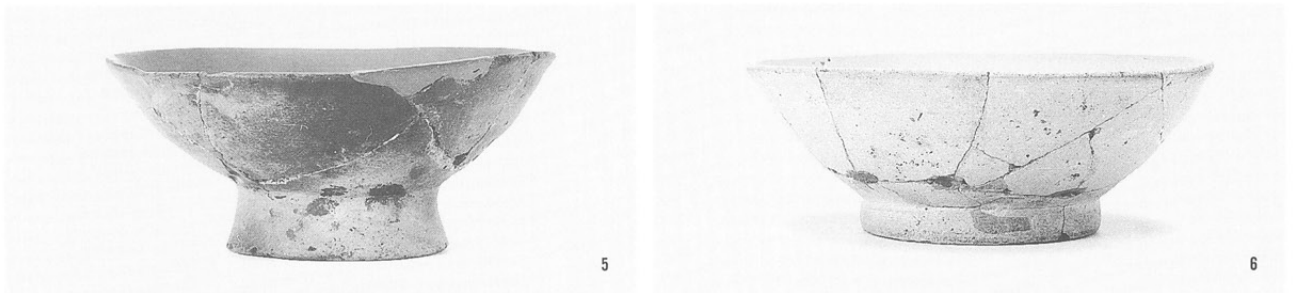
- 1 S K107
- 2 S K119
- 3 S K125
- 4 S K145
- 5 S K252
- 6 S K304
- 7 S K320
- 8 S K406
- 9・10 S K305

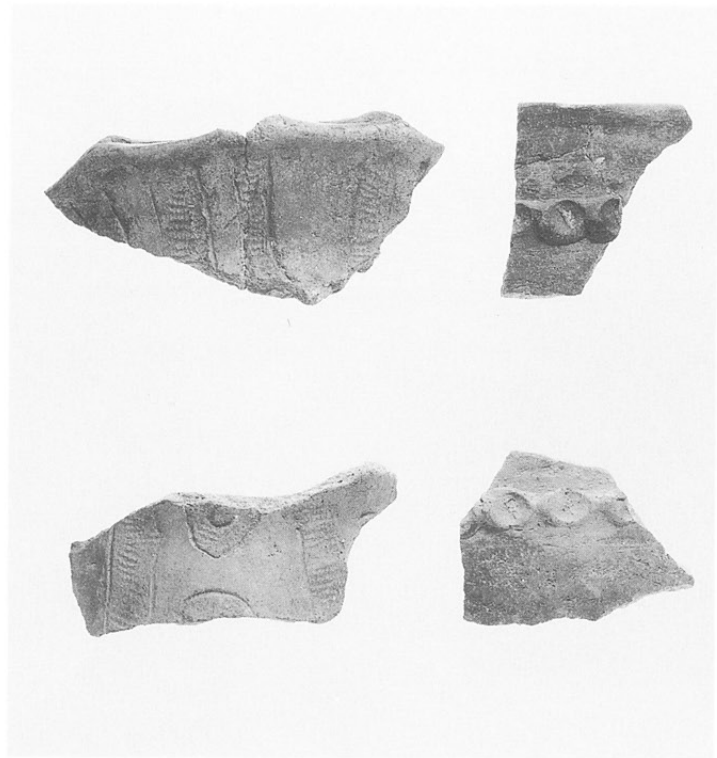


1 SK305

2~10

遺構外





左：SK083
右：SK103



左上：SK092
左中：SK173
左下：SK106
右：SK105



左上：SK175

付近

左下：Iグリッド

右：Cグリッド



墨書土器

1 SB07「四」

2 SB03

「還」カ

3 SK056「干」

4 SK043

「口今」

5 SK252

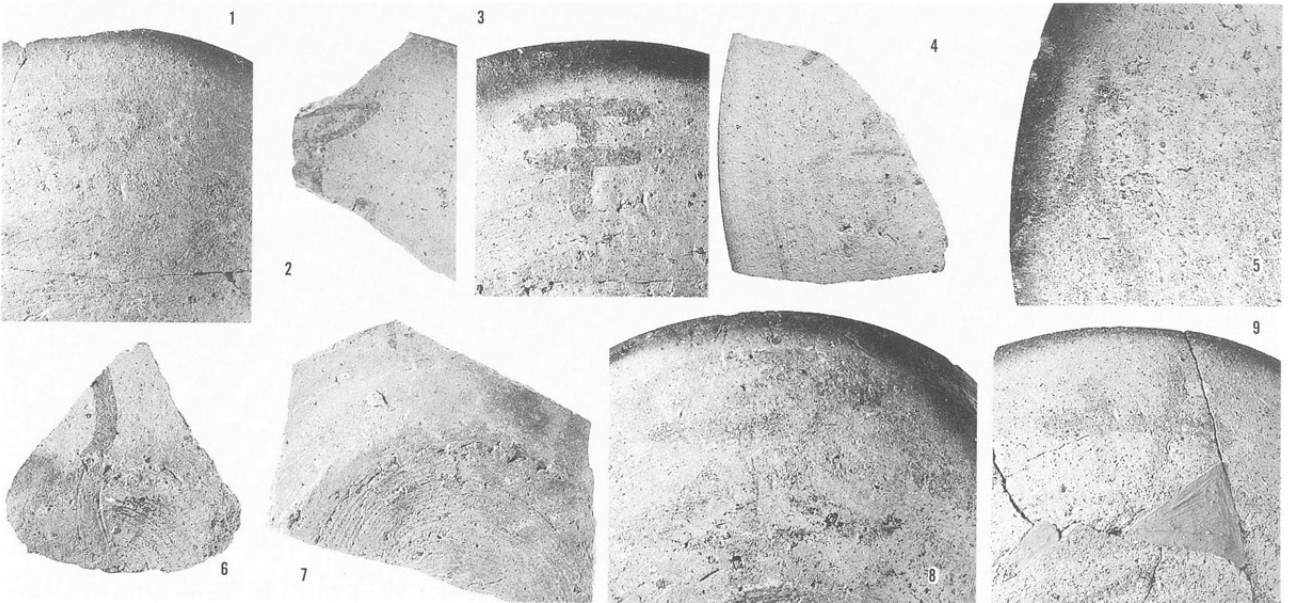
「供」カ

6・7 SK249

8 SB51「本」

9 SB03

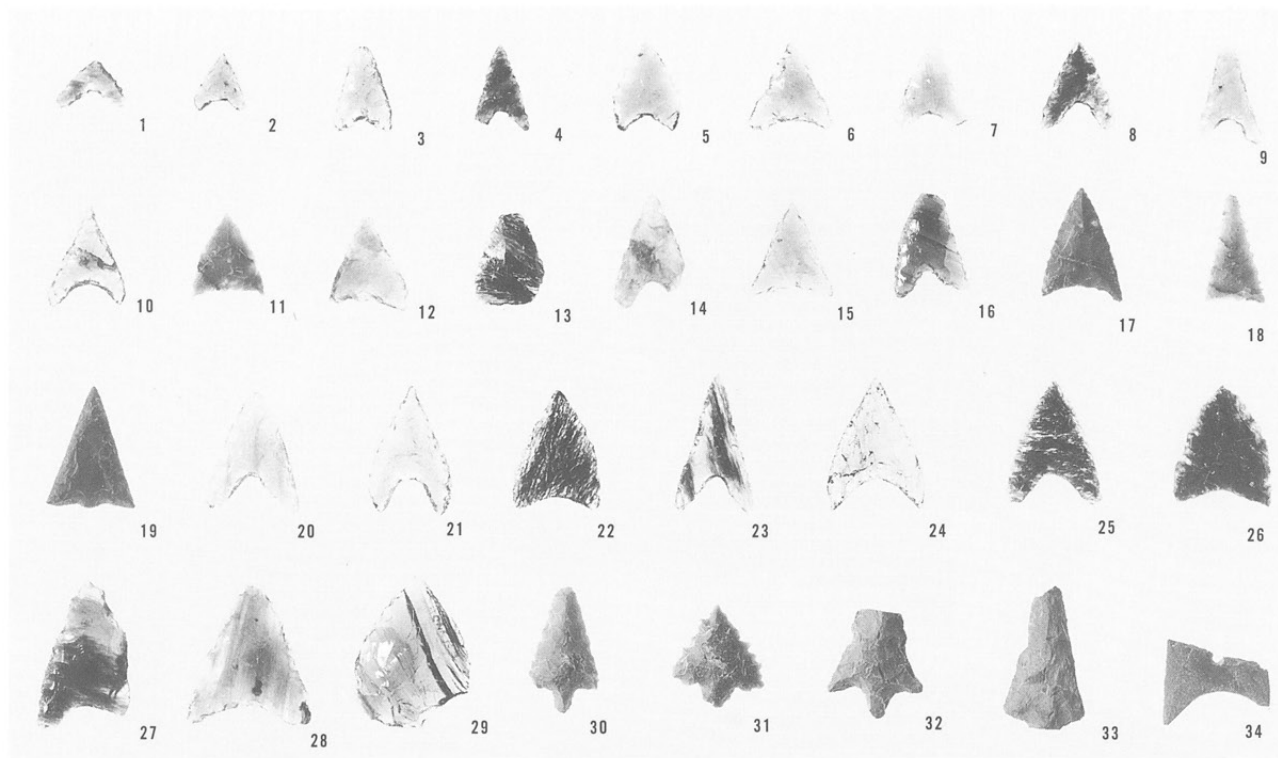
「十十万」



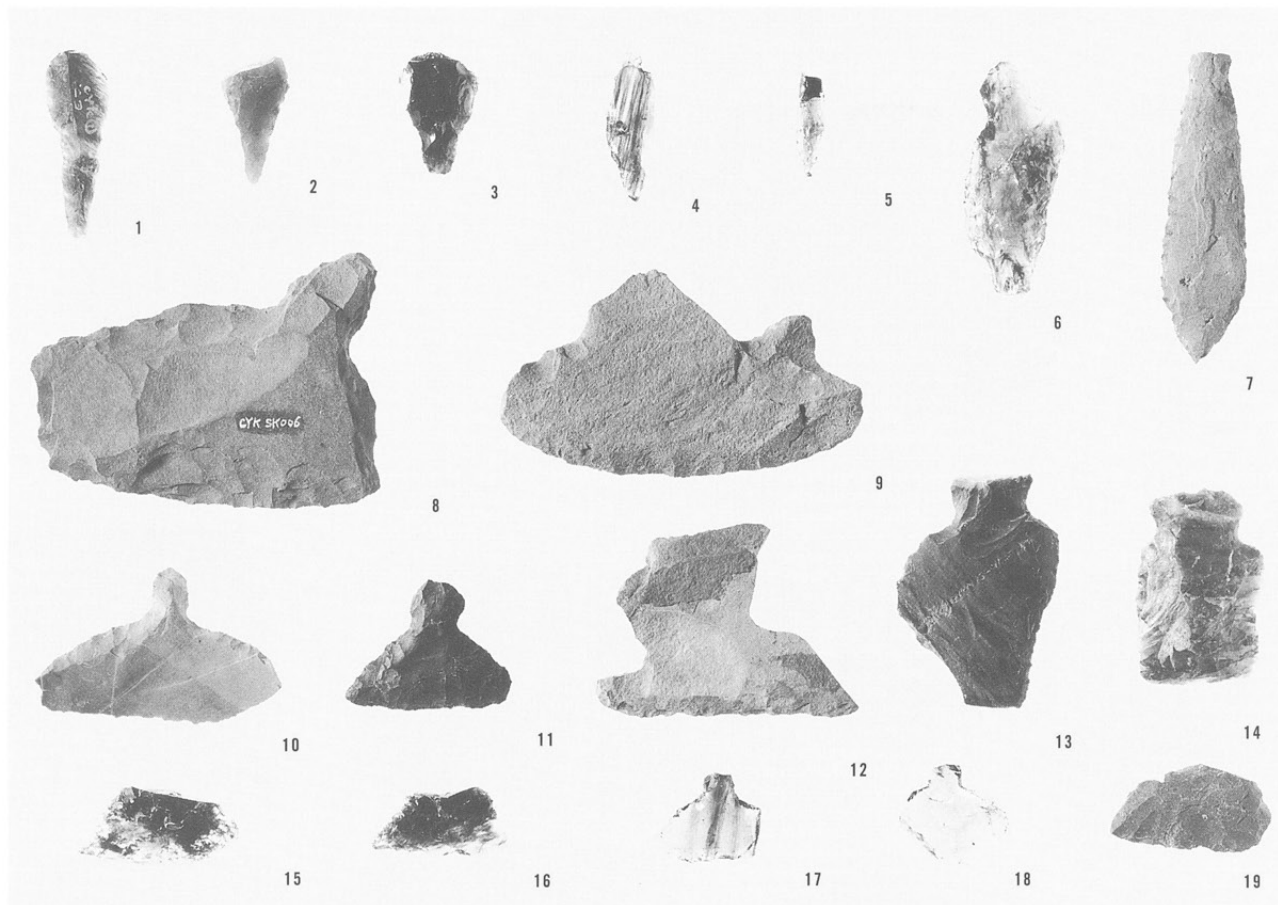
SB41

土製珓状耳飾

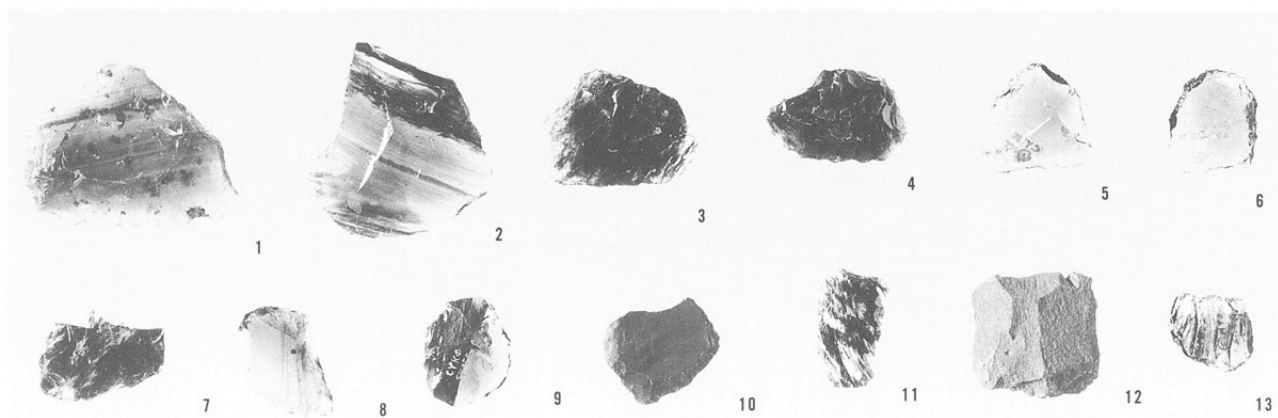




石鏃
30~33 有茎式
34 磨製石鏃

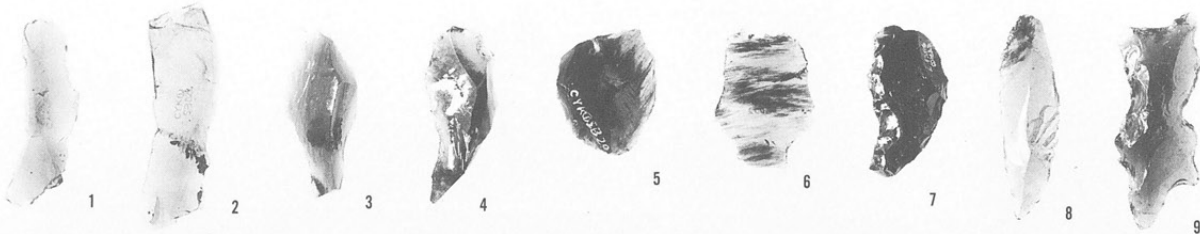


1~5 石錐
6~19 石匙

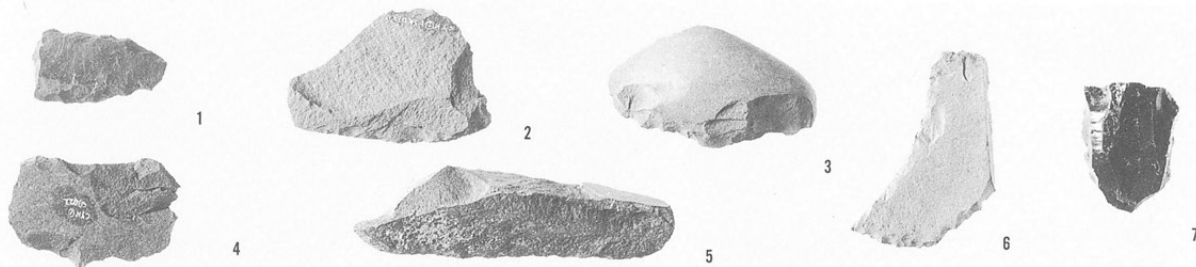


1~13
スクレイパー

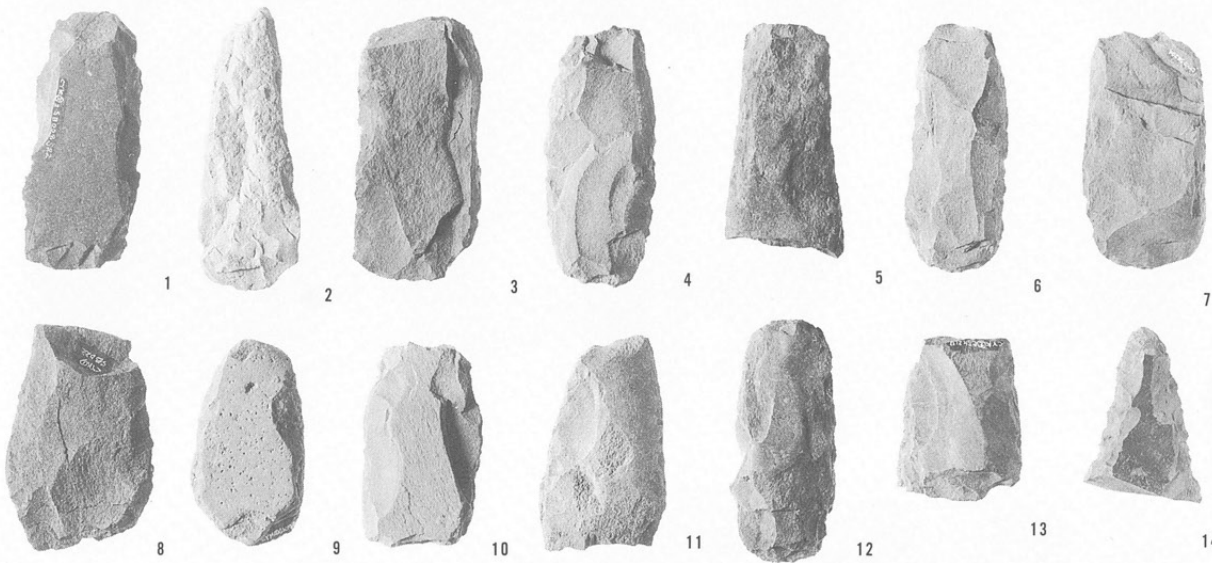
UF・RF・
ノッチ



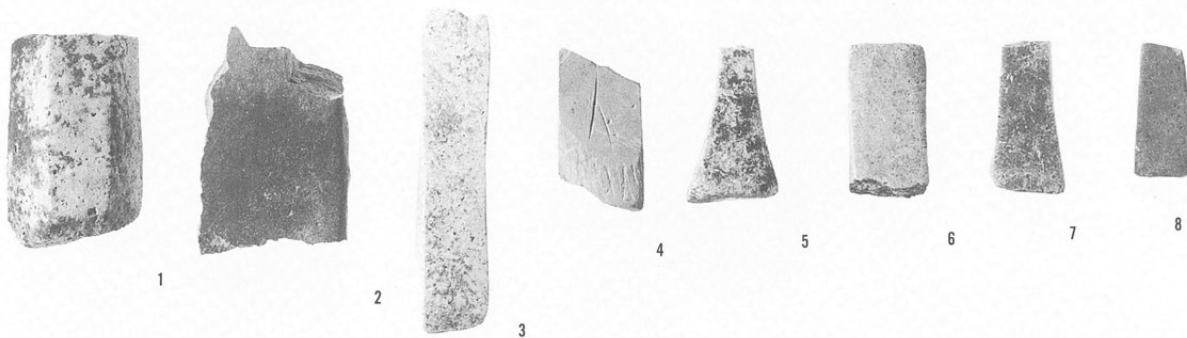
1~6
スクレイパー
7 石核



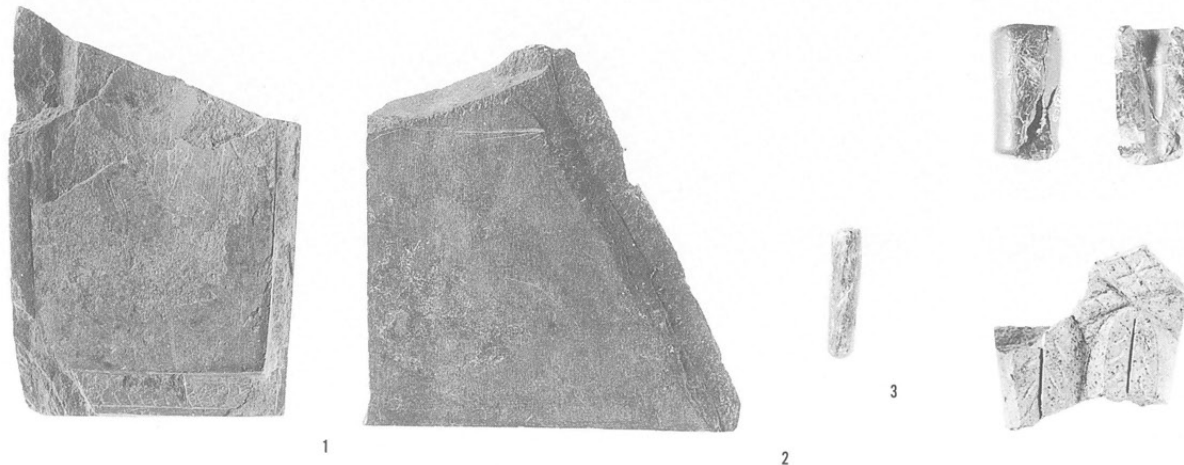
打製石斧

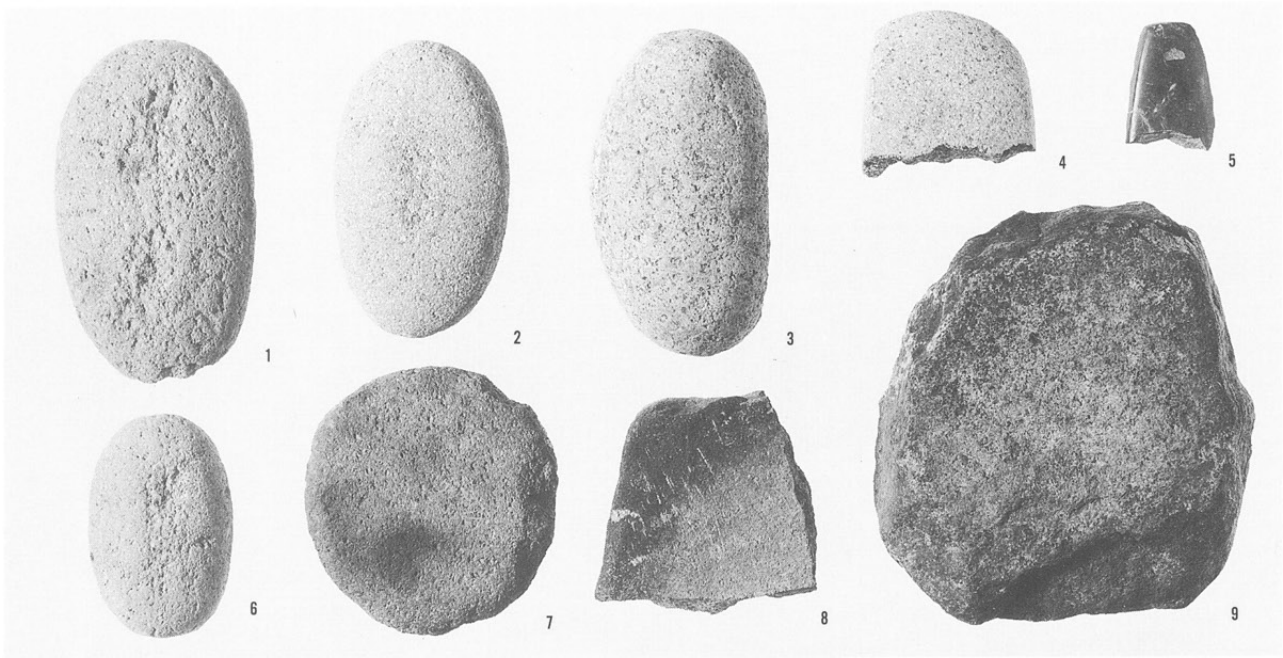


砥石

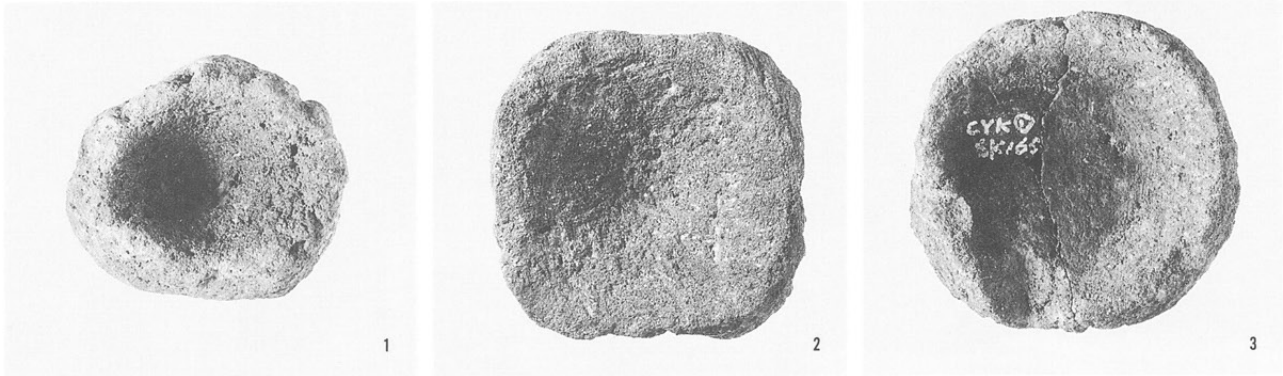


左：1 硯
2 石板
3 石筆
右上：管玉
右下：不明
石製品

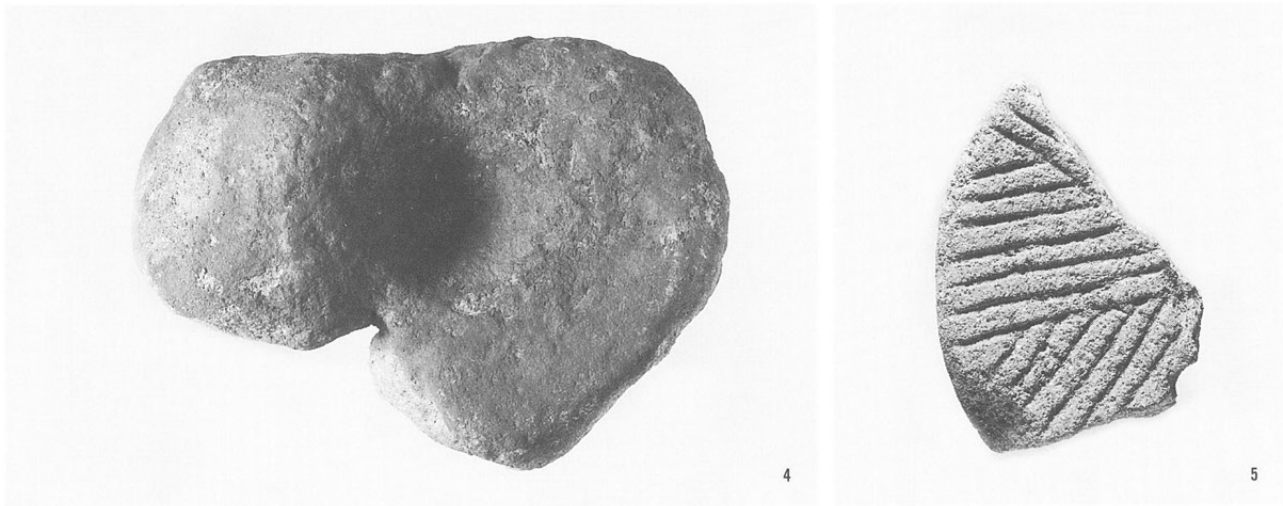




1 ~ 4・6
磨石類
5 磨製石斧
7 ~ 9 台石



1 ~ 4 石鉢
S K165



5 石臼
S K057

S B01
敷石住居跡



左：遺跡遠景
右：調査風景

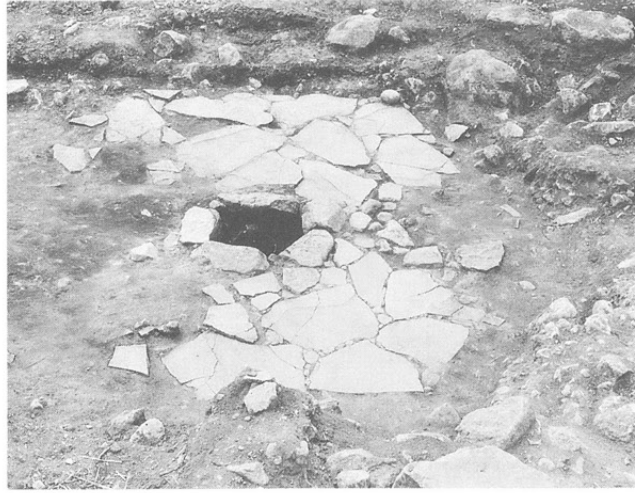


左：S B01
石囲炉
右：同炉体土器





縄文土器
出土状況



左：縄文土器
出土状況
右：S B01
東から



左：S B01
完掘状況
右：遺跡発見



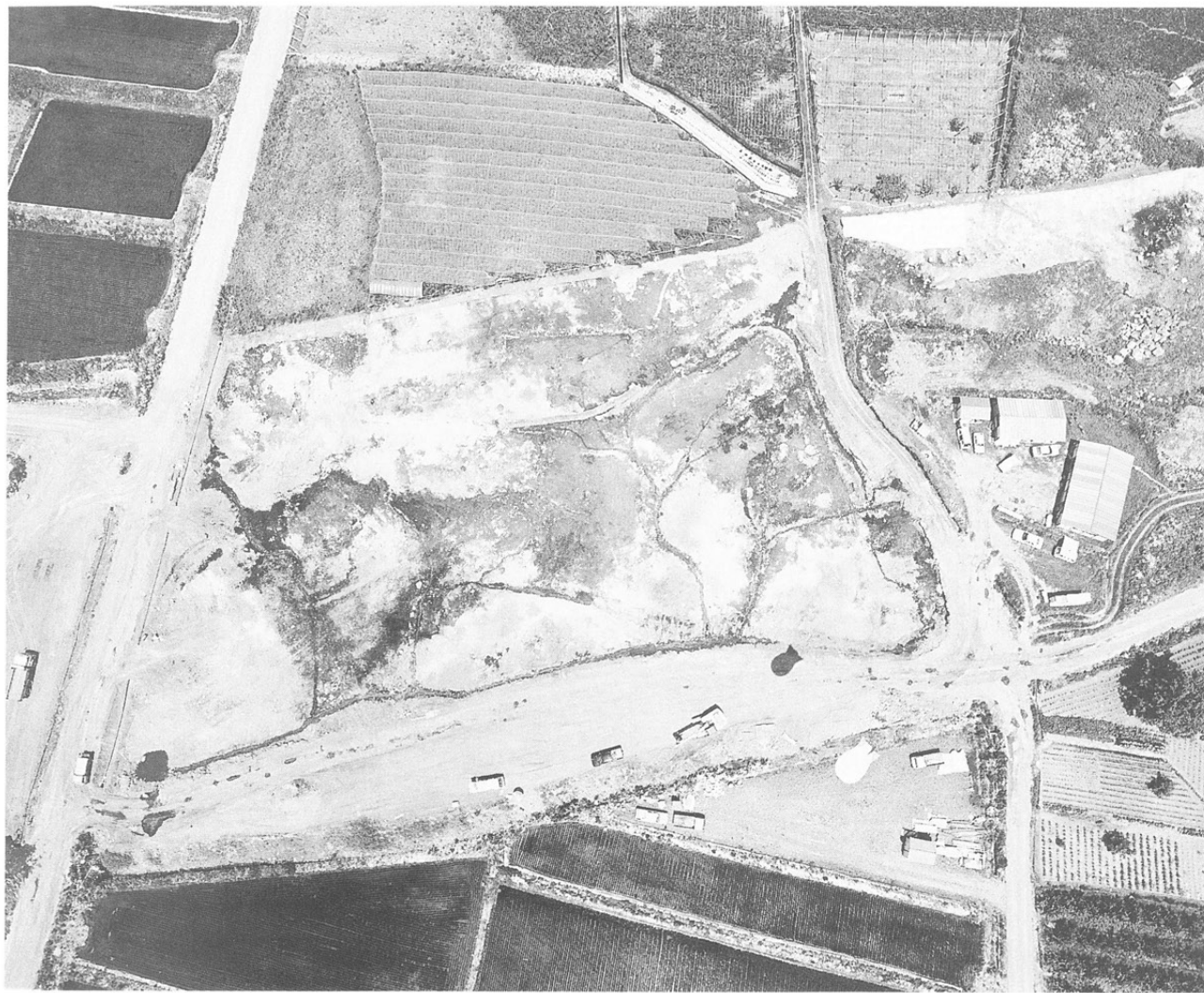
野行田遺跡
左：検出状況
右：調査風景

①B区



①B区





②A区



②A区
SD10

②B区



③区





S B02

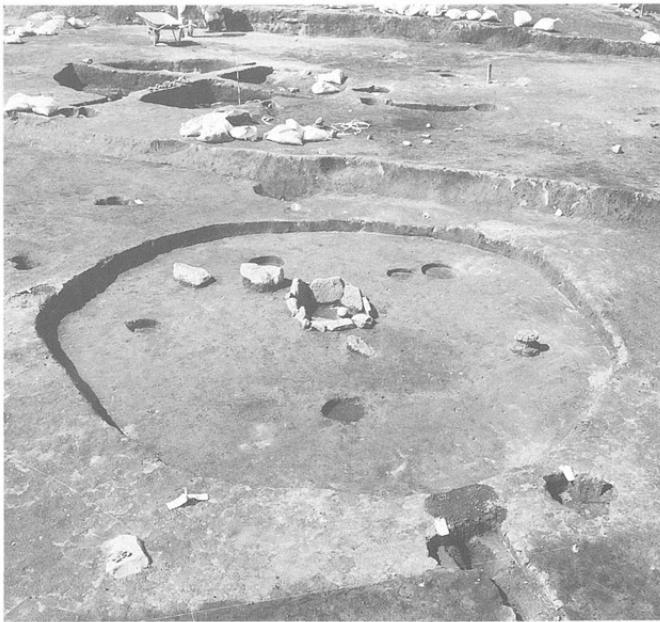


S B04



左：完掘状況
右：同カマド

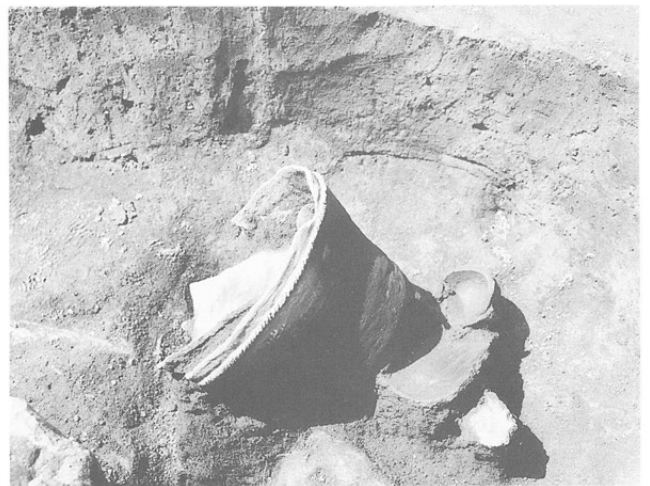
S B05
右：石圍炉



S B07



左：S K017
右：S K225



S K122

