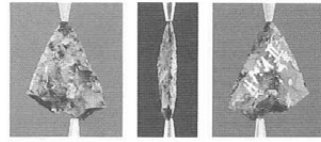
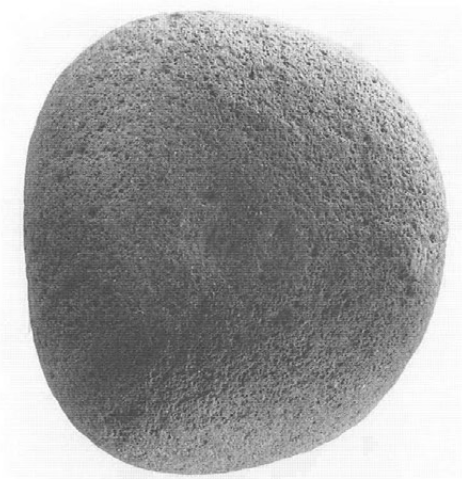
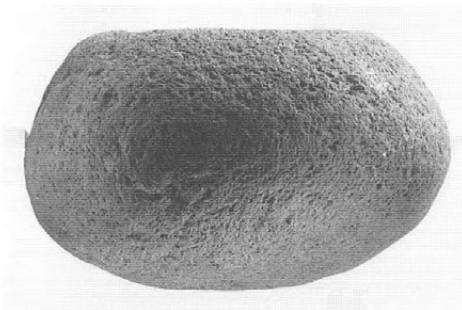
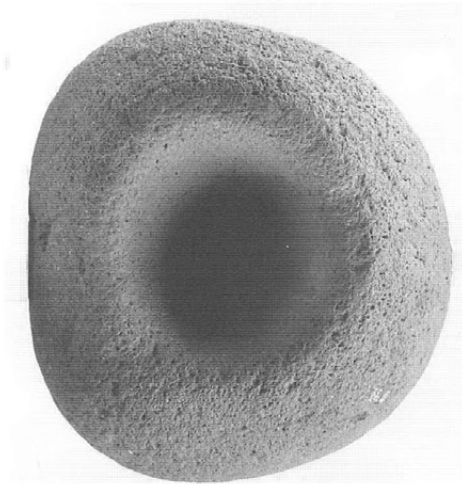


SB - 19    × 1    23

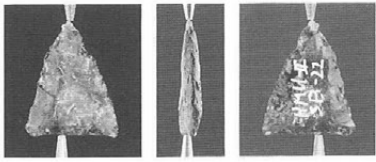


SB - 19    × 1    24

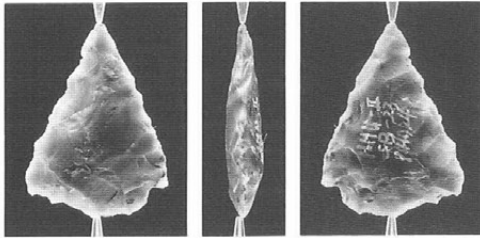


SB - 20  
× 1 / 4  
25

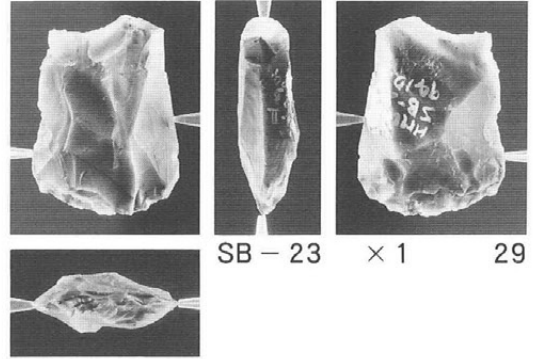
石器写真6



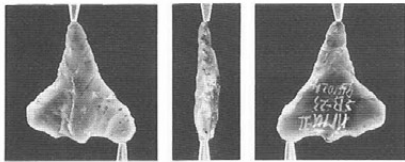
SB - 22  
× 1  
26



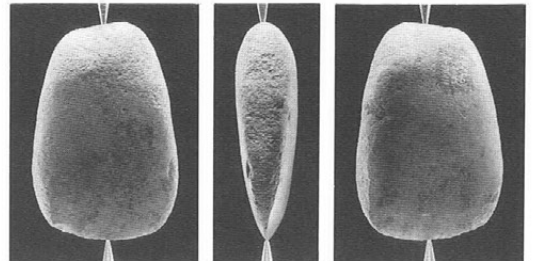
SB - 23      × 1      27



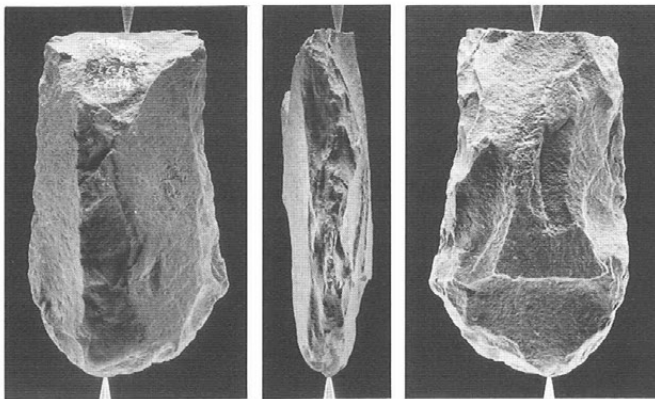
SB - 23      × 1      29



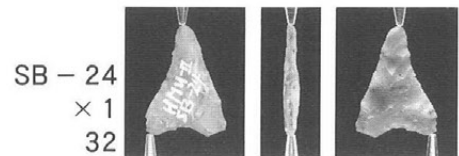
SB - 23      × 1      28



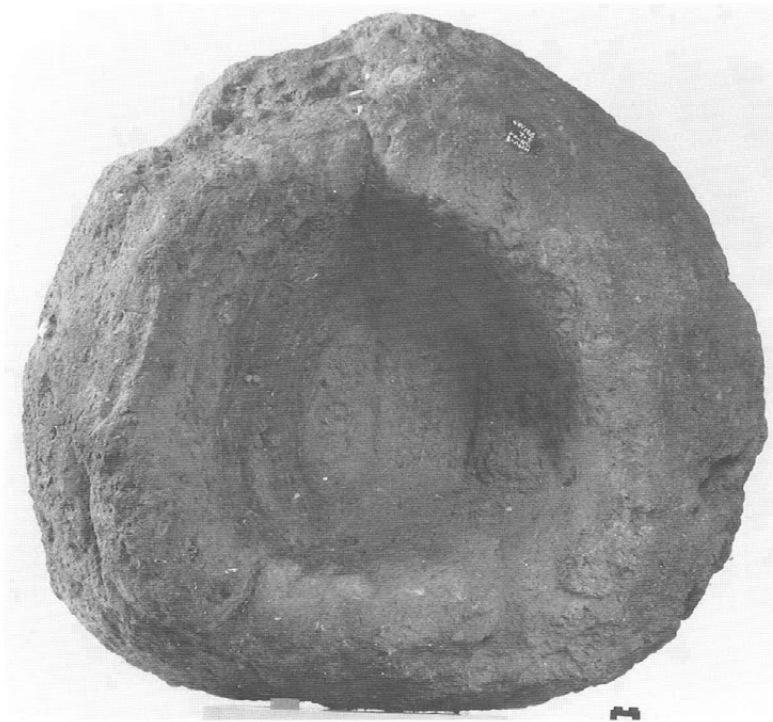
SB - 23      × 1/2      30



SB - 23      × 1/2      31



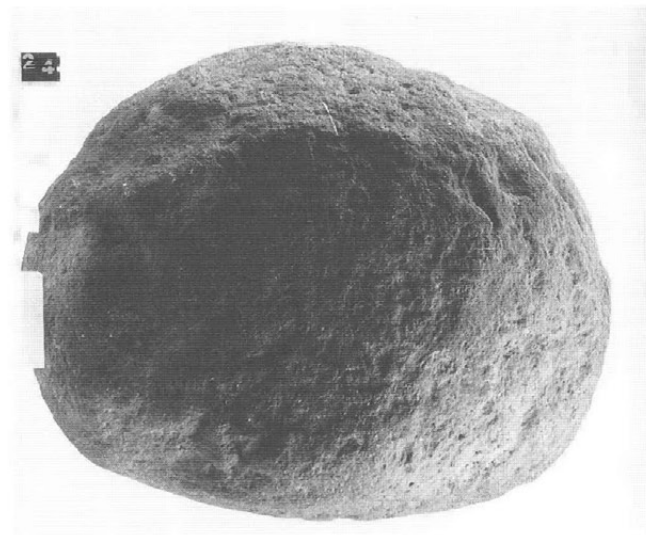
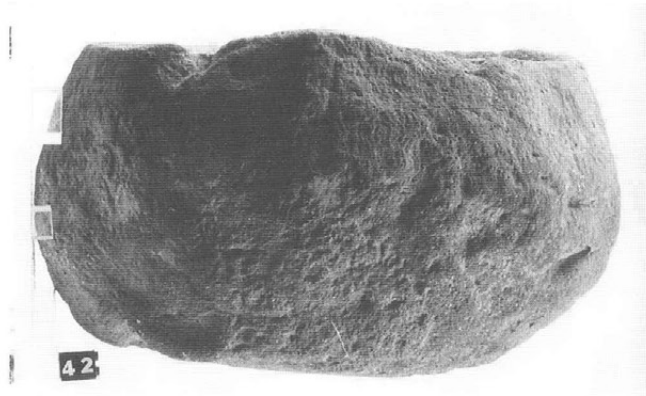
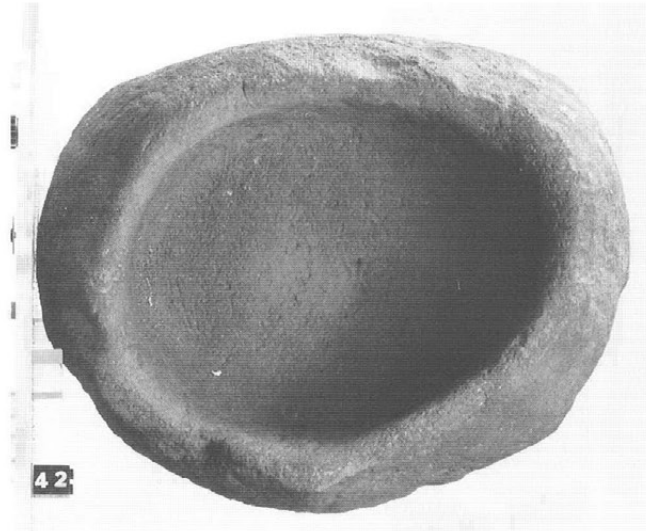
SB - 24  
× 1  
32



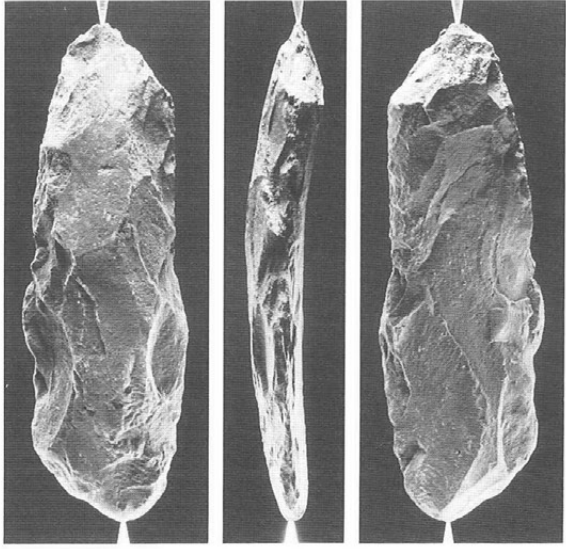
SB-24

× 1/4

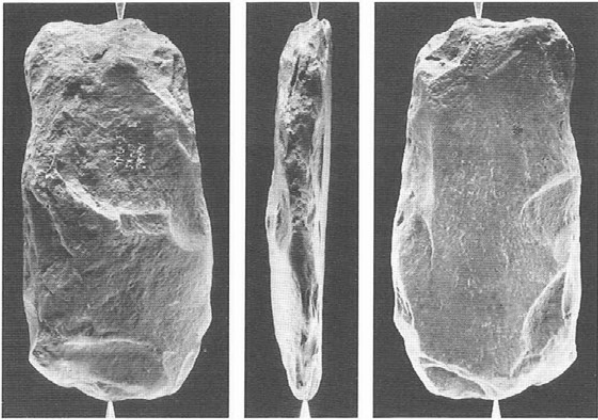
33



SB - 25  
× 1/4  
34



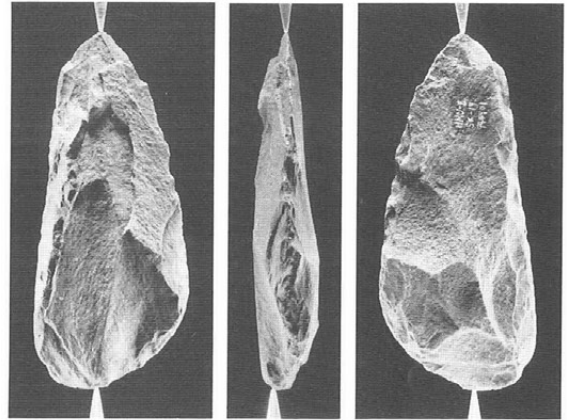
SK - 10  
 × 1/2  
 35



SK - 19

× 1/2

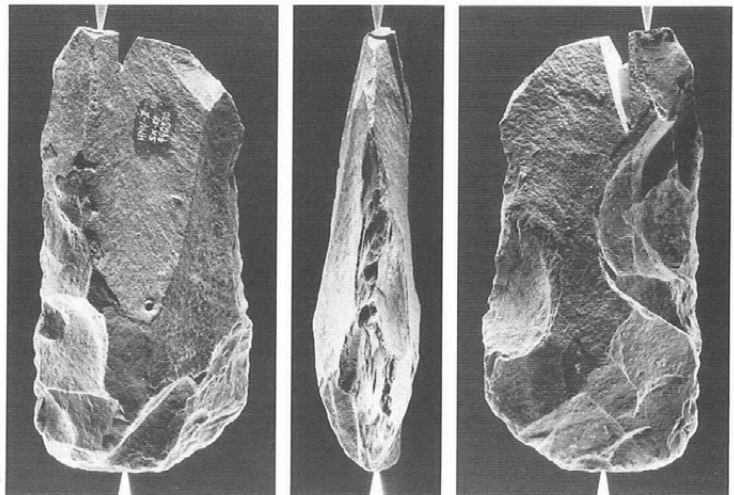
36



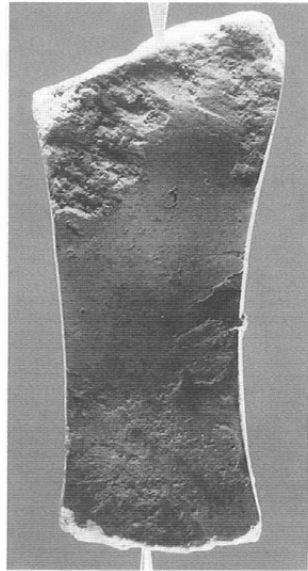
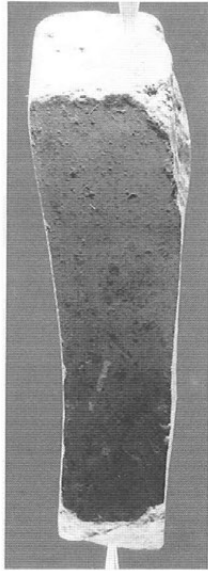
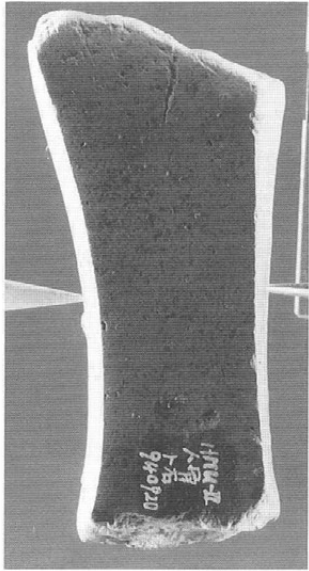
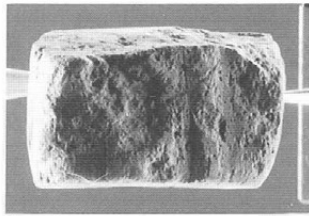
SK - 19

× 1/2

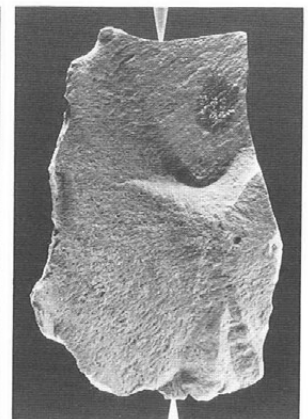
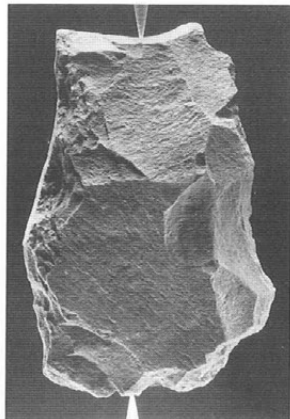
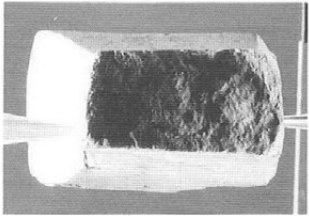
37



SK - 19  
 × 1/2  
 38

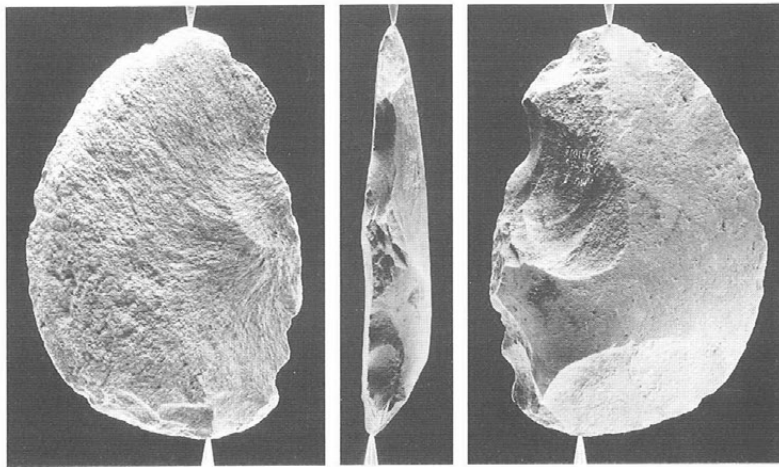


SK - 35  
× 1  
39

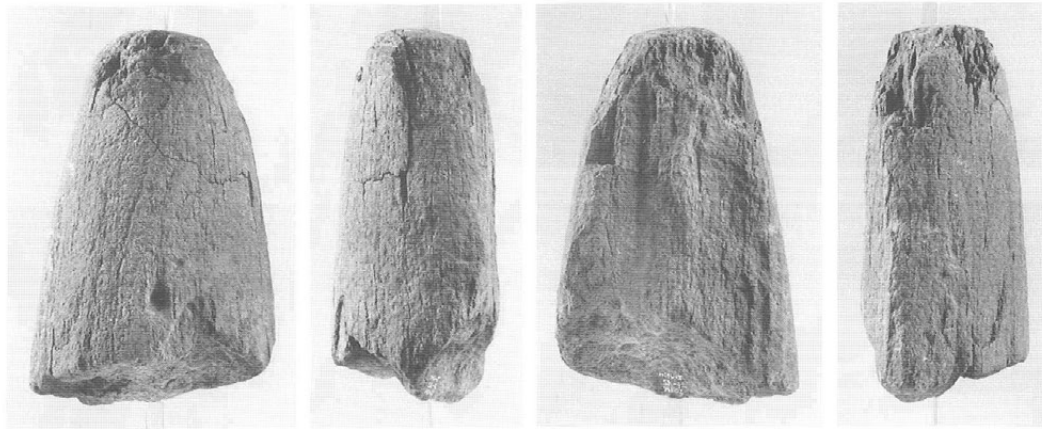


SK - 36  
× 1/2  
40

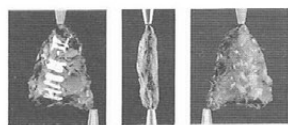
石器写真 11



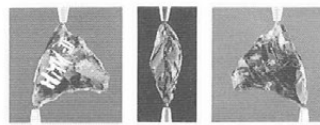
SK - 36  
 × 1/2  
 41



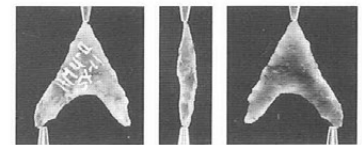
SK - 45  
 × 1/4  
 42



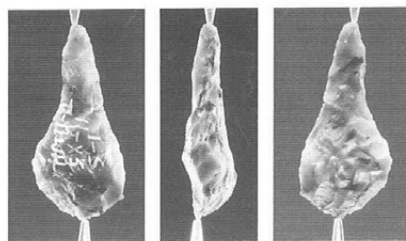
SX - 03 × 1 43



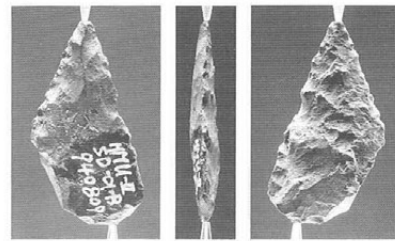
SX - 03 × 1 44



SX - 11 × 1 45

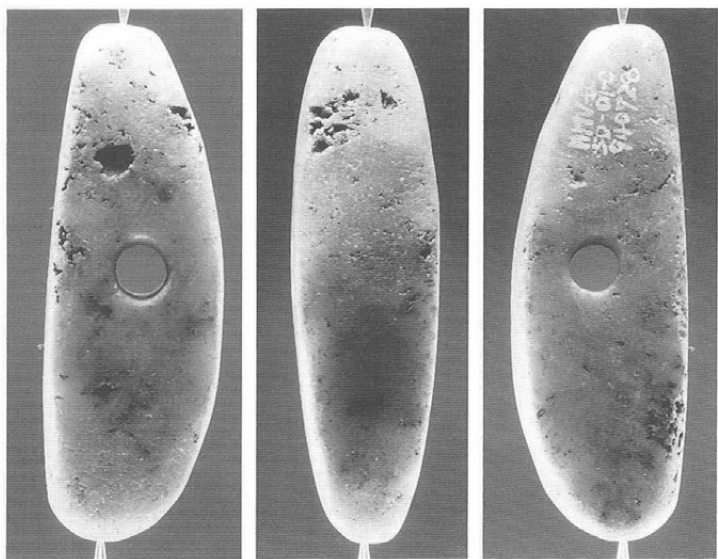


SX - 11 × 1 46

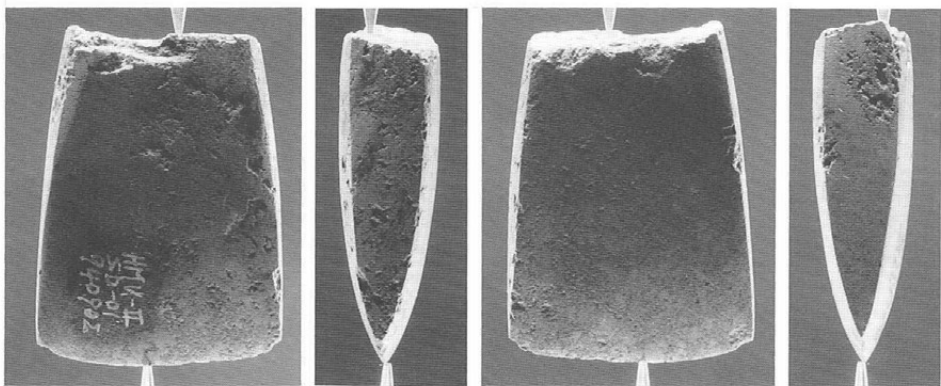


SD - 01 × 1 47

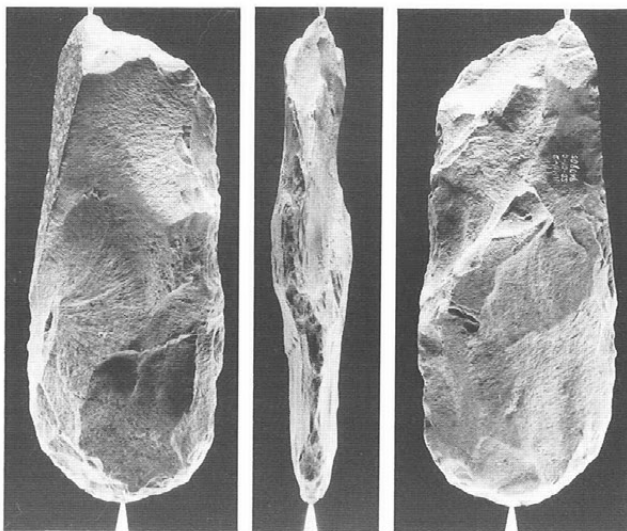
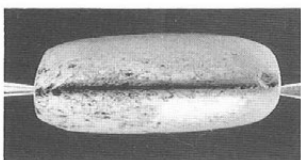
石器写真 12



SD - 01  
× 1  
48

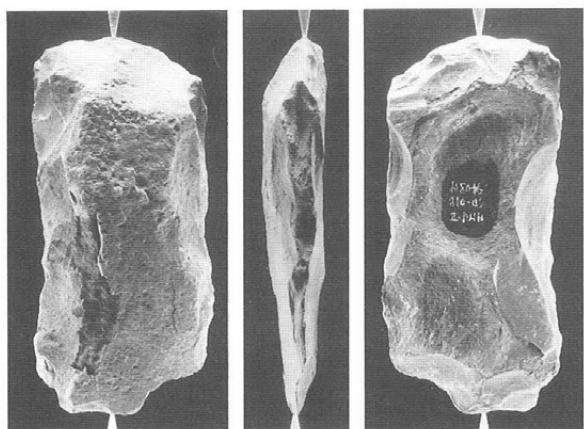


SD - 01  
× 1  
49



SD - 01  
× 1/2  
50

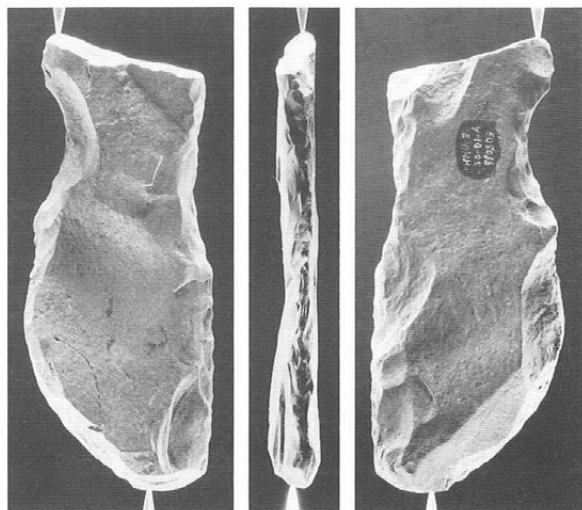




SD-01

× 1/2

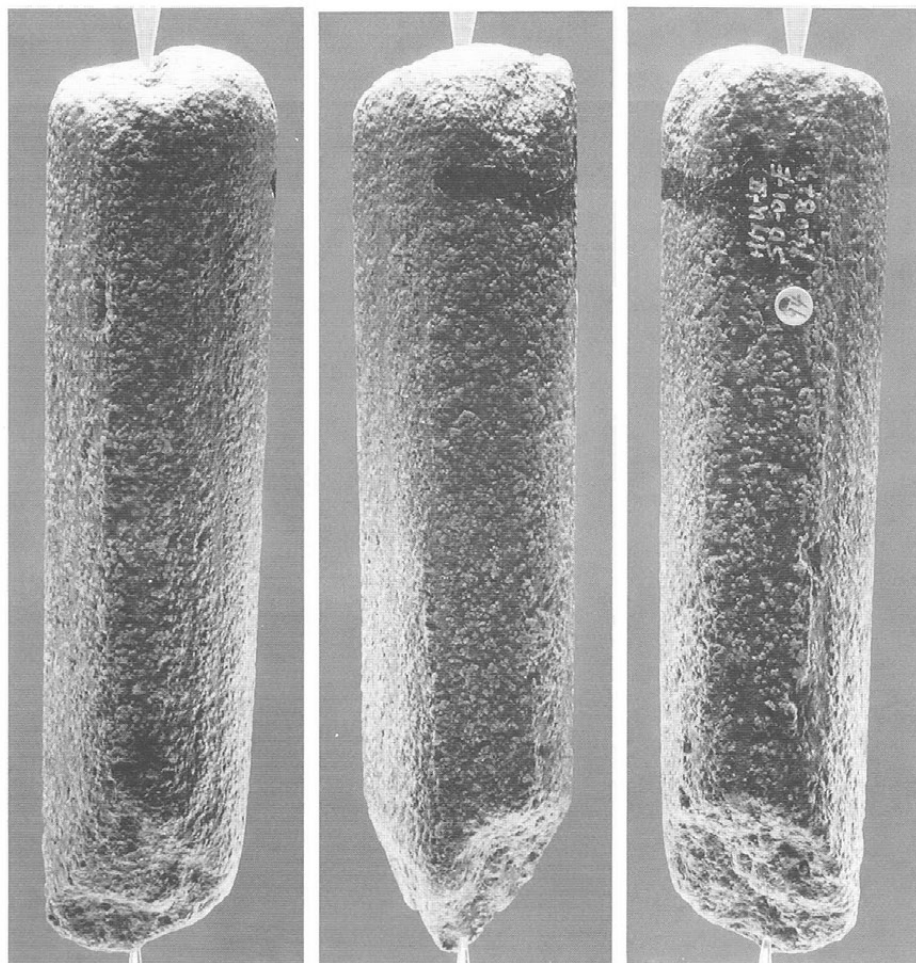
51



SD-01

× 1/2

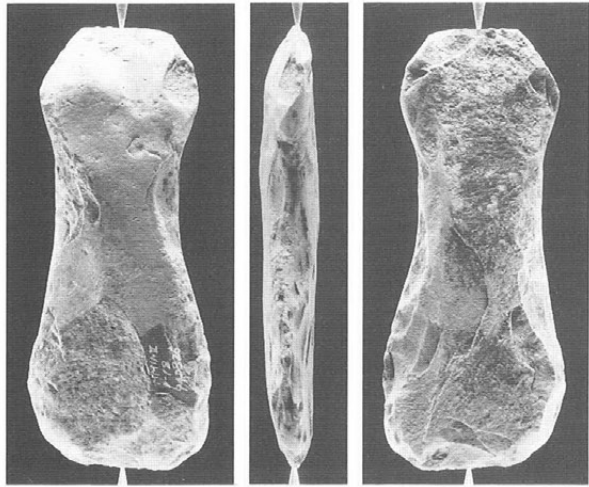
52



SD-01

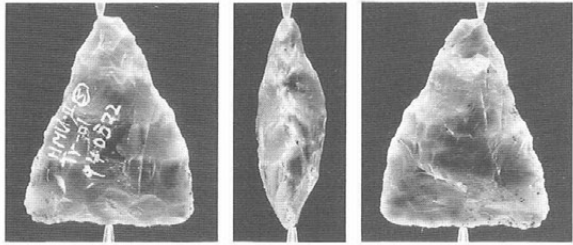
× 1

53

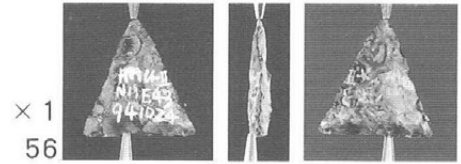


P-78  
× 1/2  
54

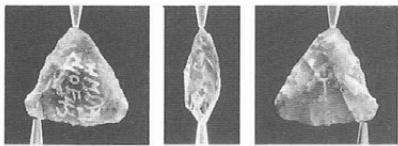
以下遺溝外



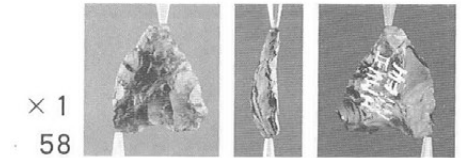
× 1  
55



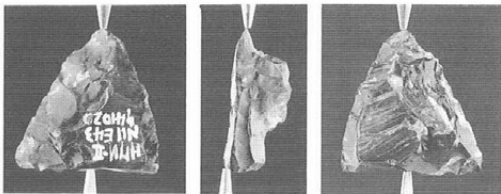
× 1  
56



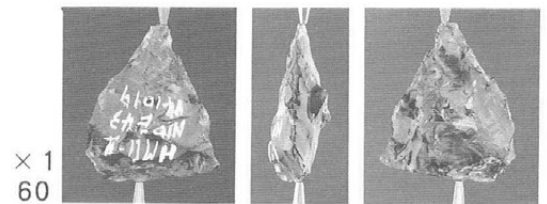
× 1  
57



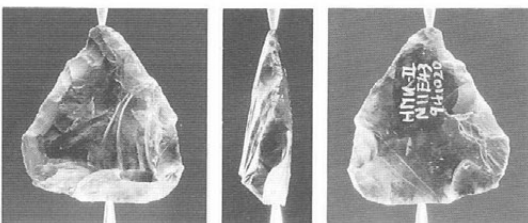
× 1  
58



× 1  
59

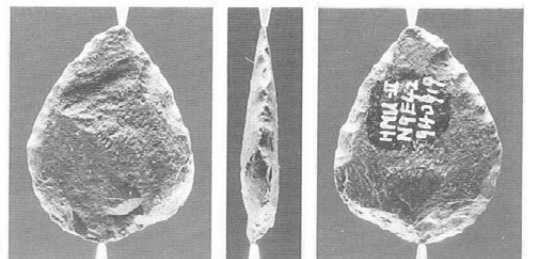


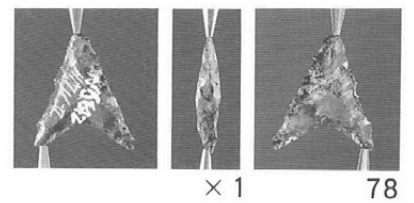
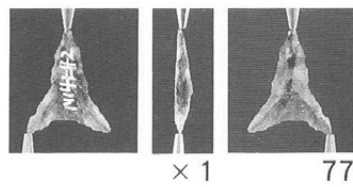
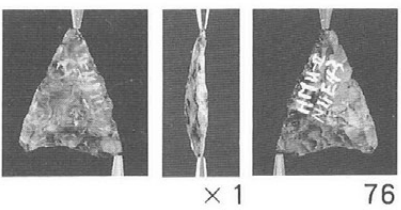
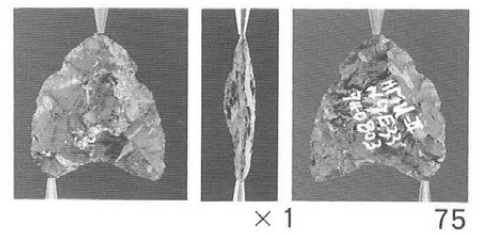
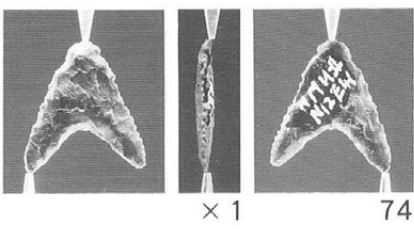
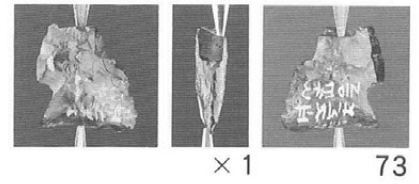
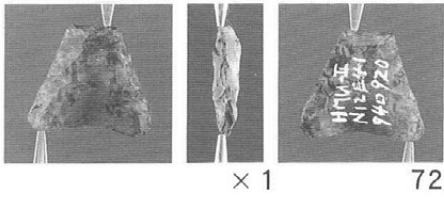
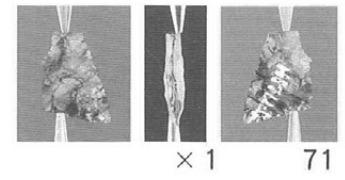
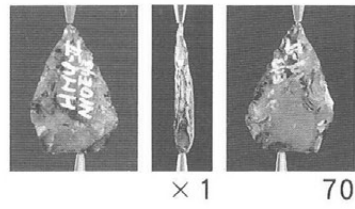
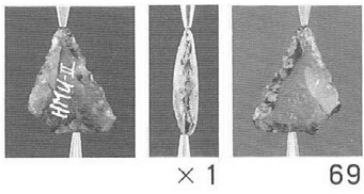
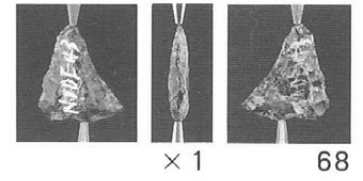
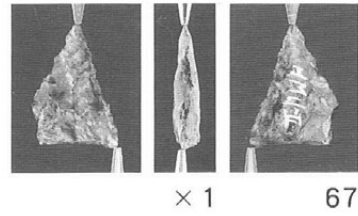
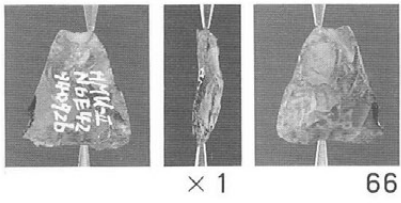
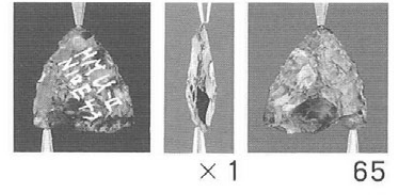
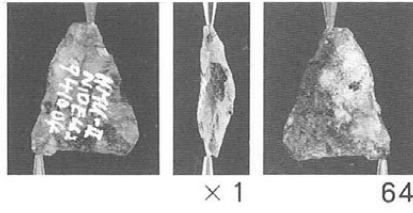
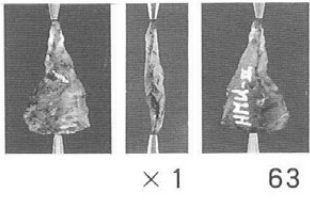
× 1  
60

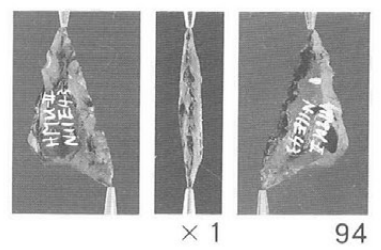
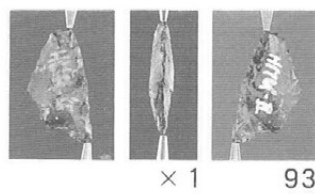
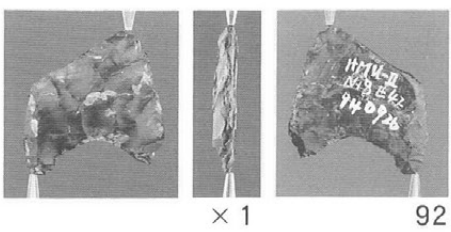
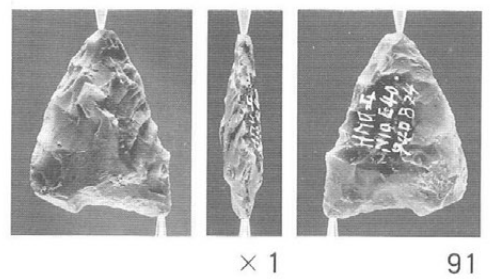
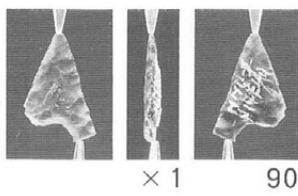
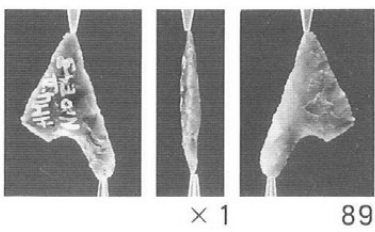
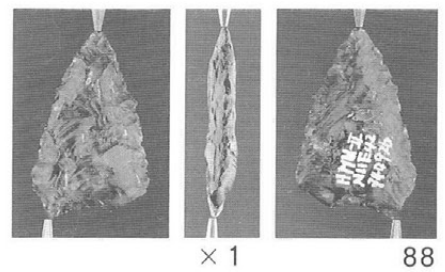
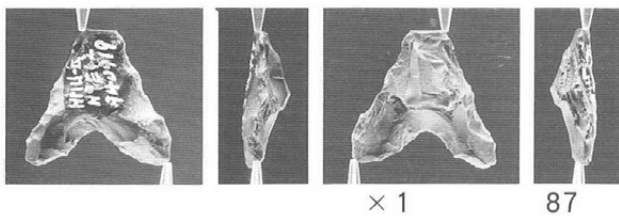
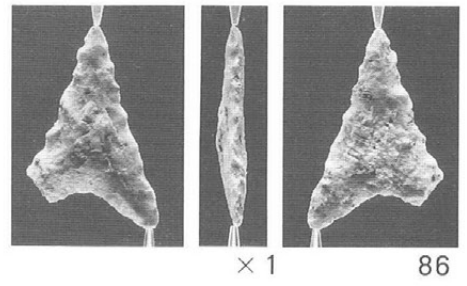
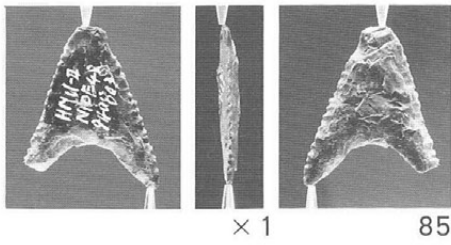
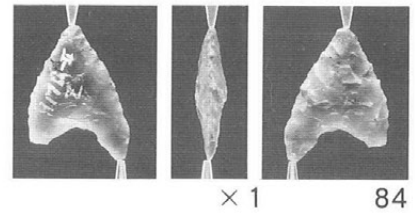
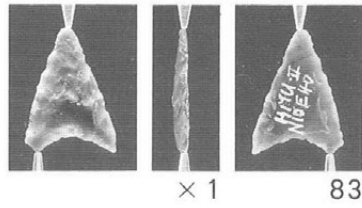
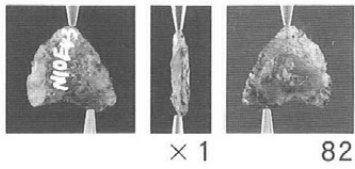
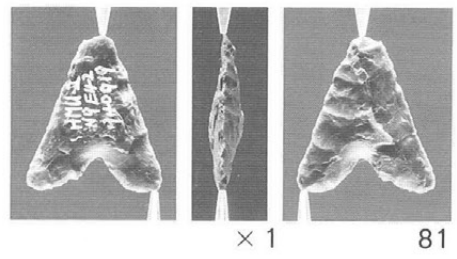
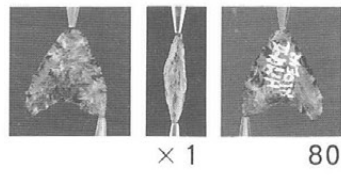
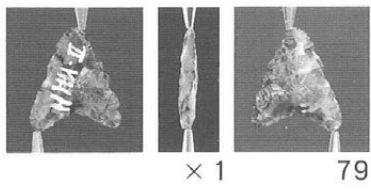


× 1  
61

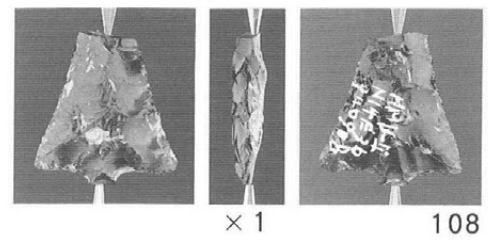
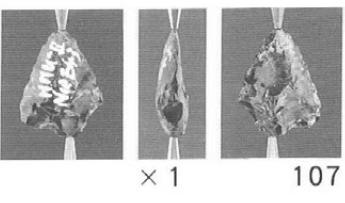
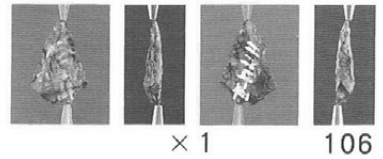
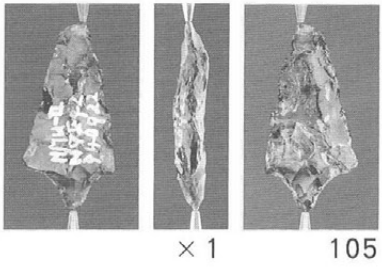
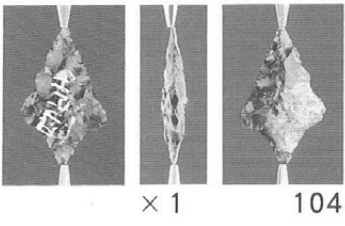
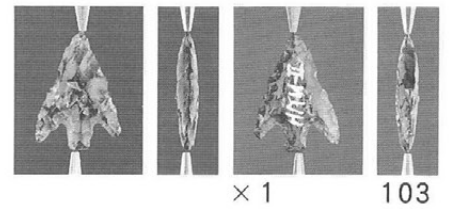
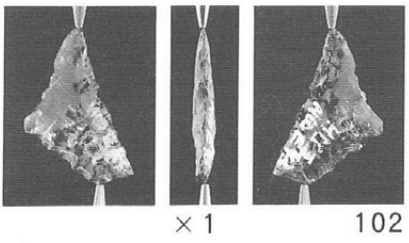
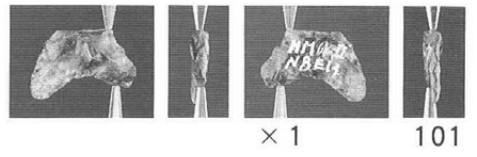
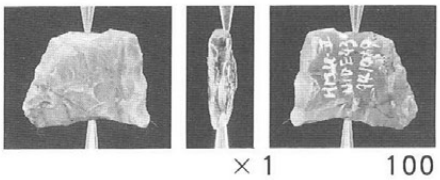
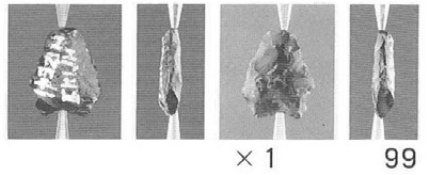
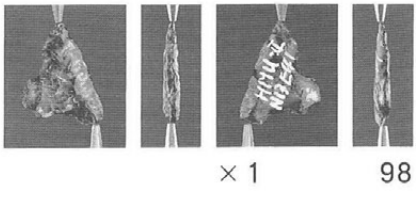
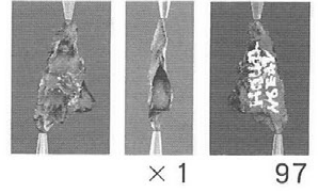
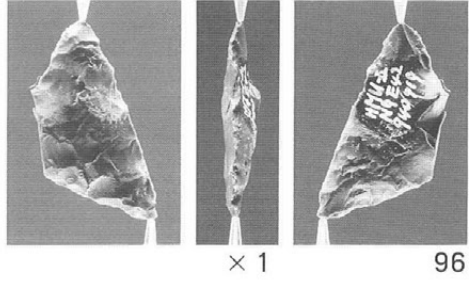
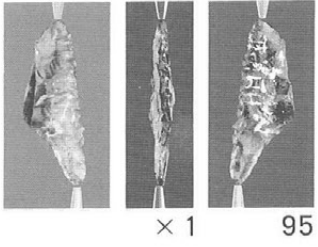
× 1  
62



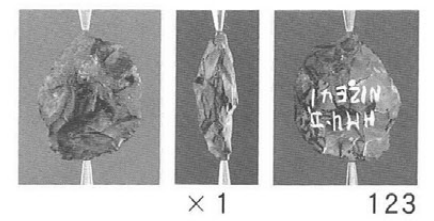
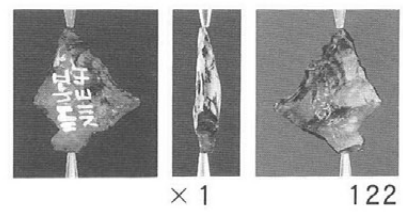
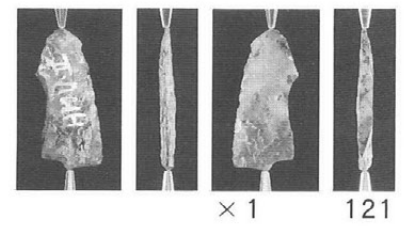
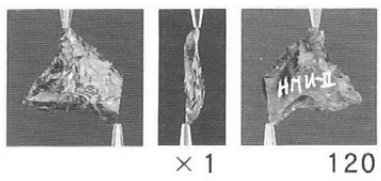
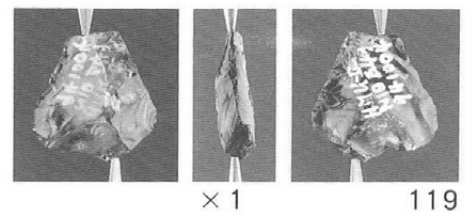
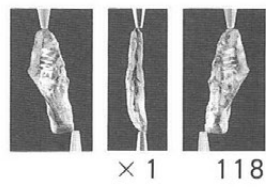
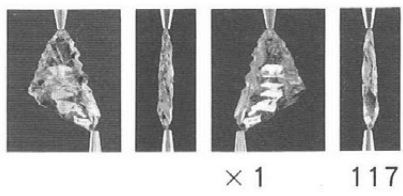
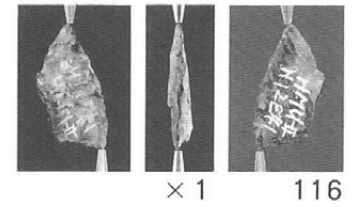
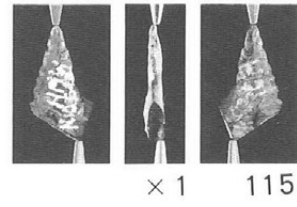
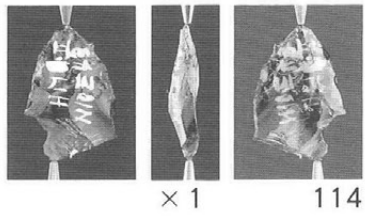
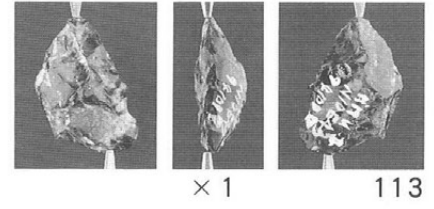
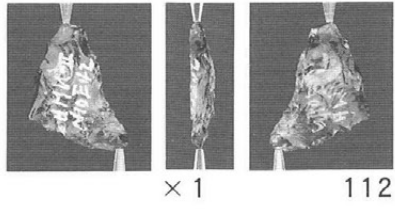
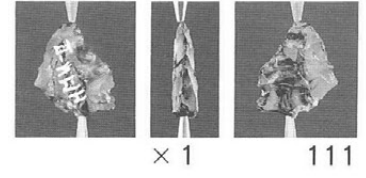
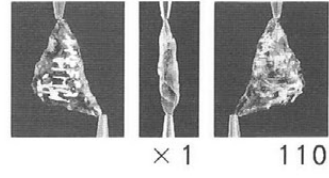
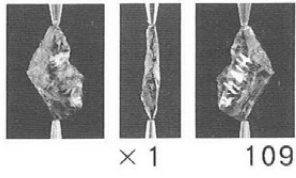


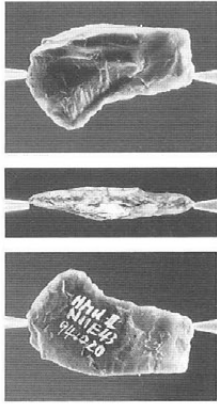


石器写真 17

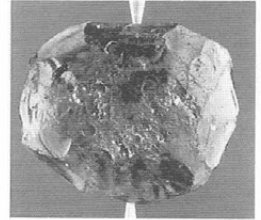
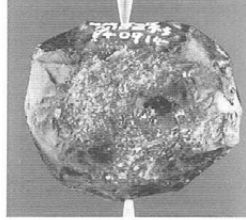
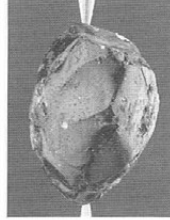


石器写真 18

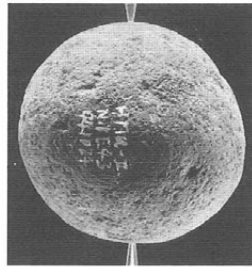
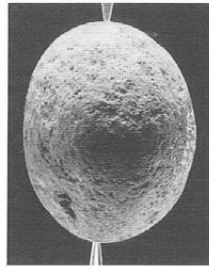
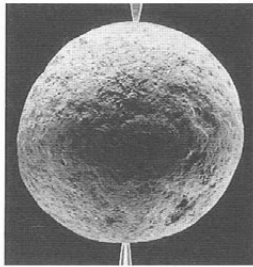
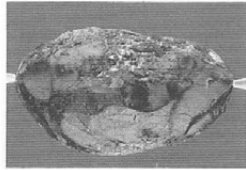




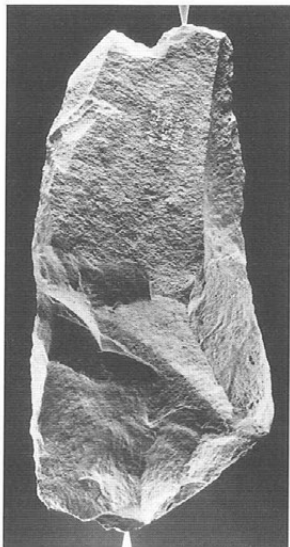
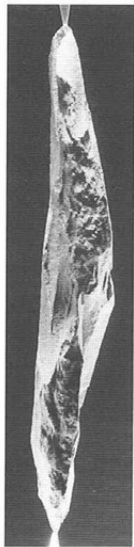
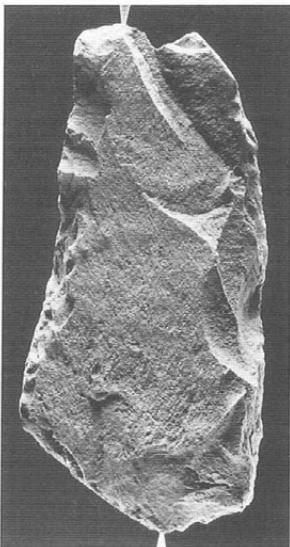
× 1 124



× 1 125

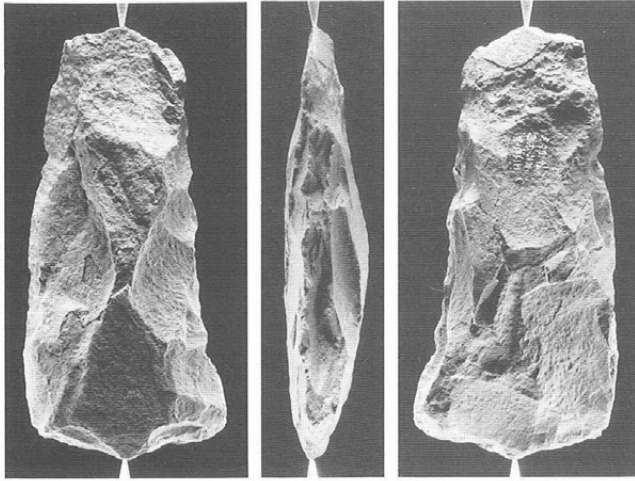


× 1  
126



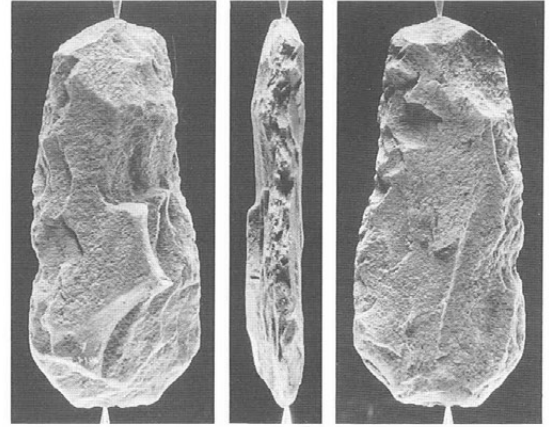
× 1/2  
127

石器写真 20



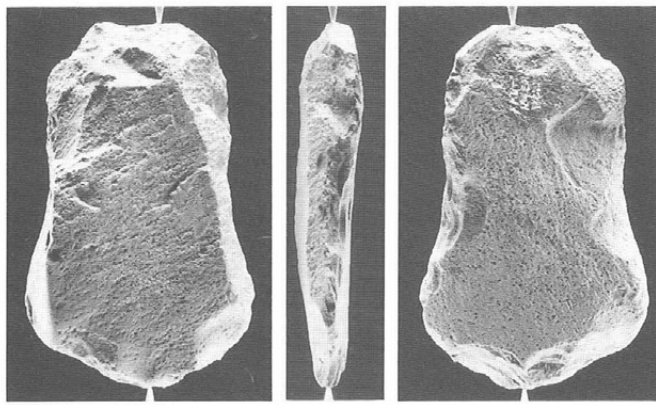
× 1/2

128

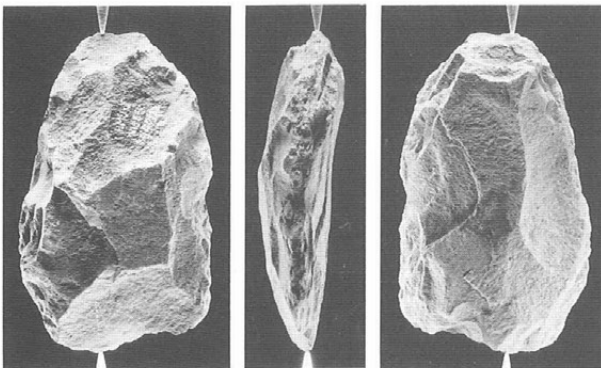


× 1/2

129

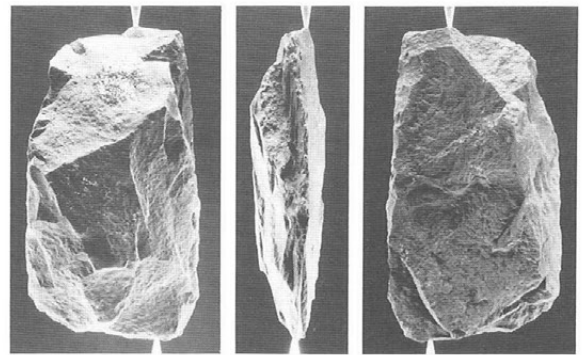


× 1/2  
130



× 1/2

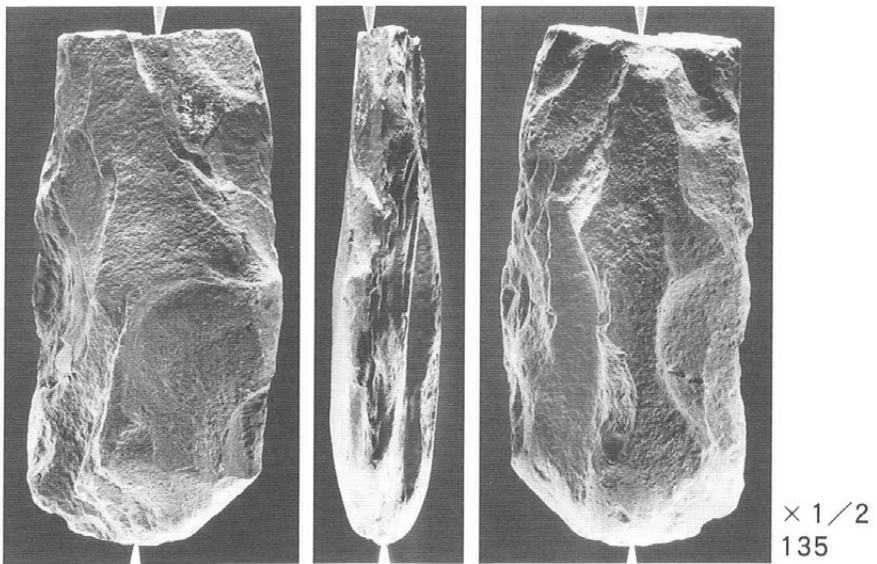
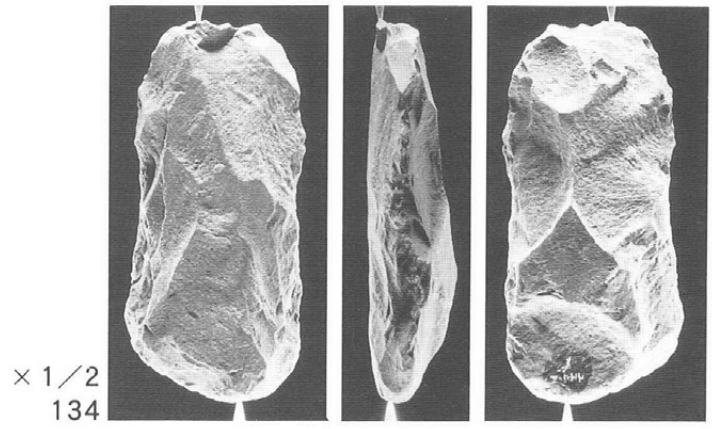
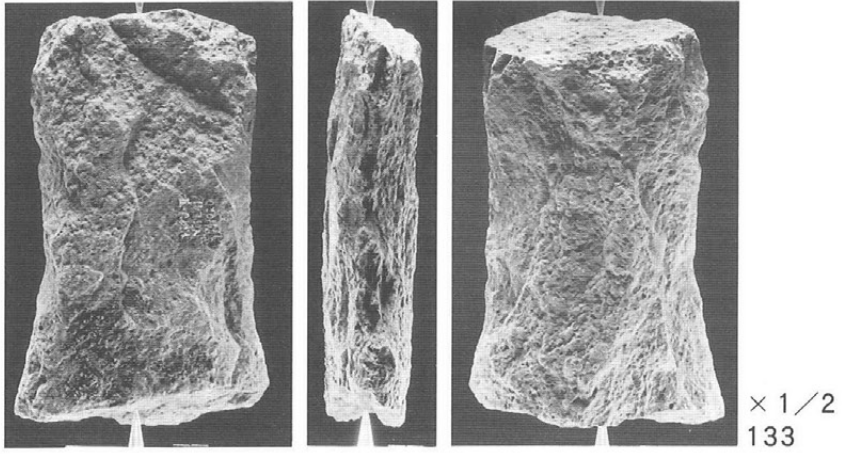
131



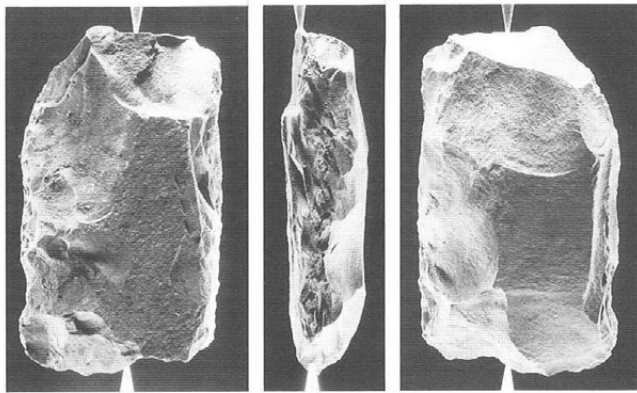
× 1/2

132

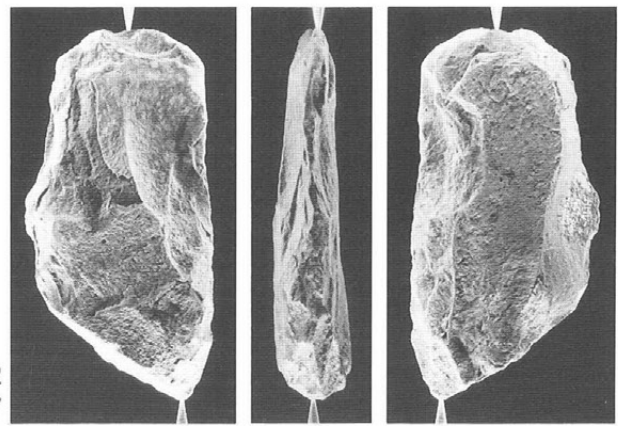




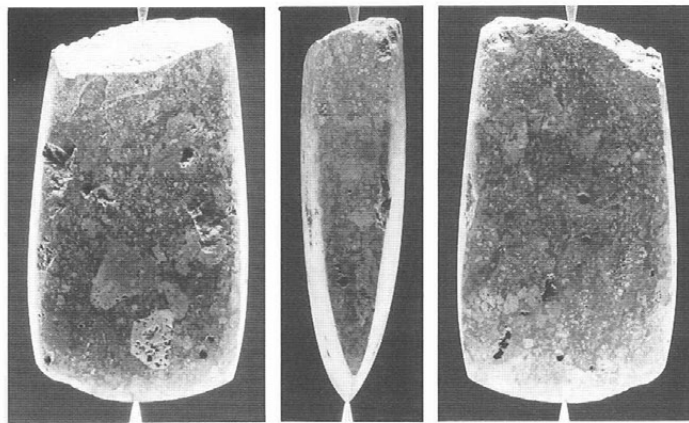
石器写真 22



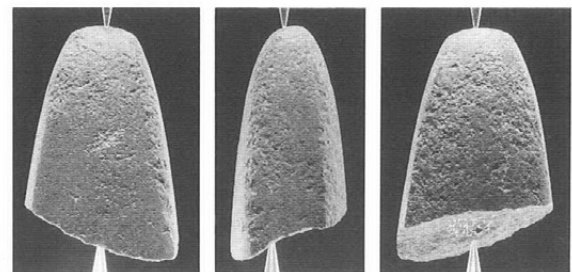
× 1/2  
136



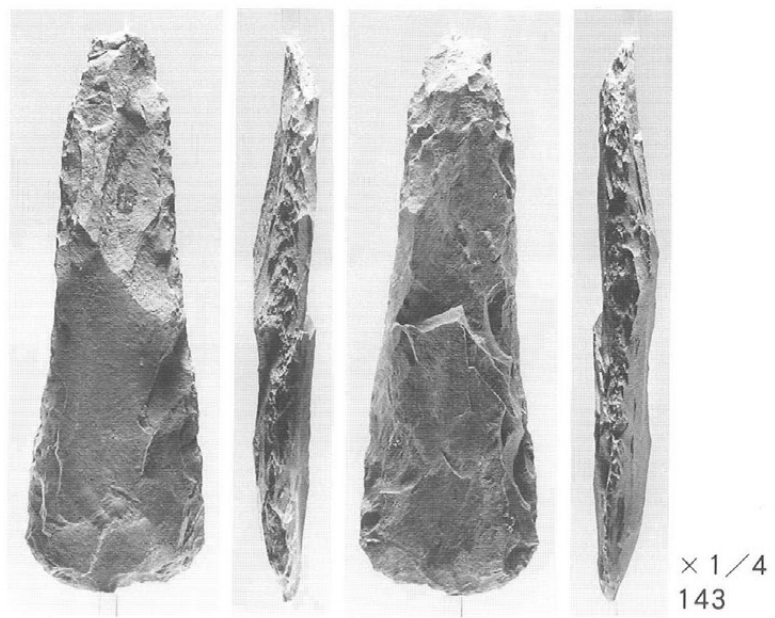
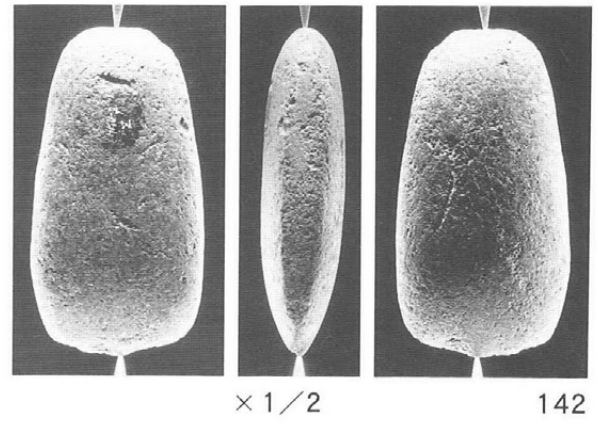
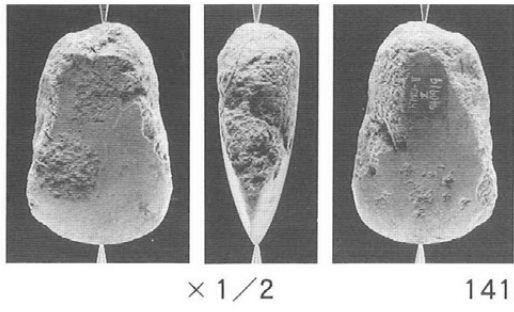
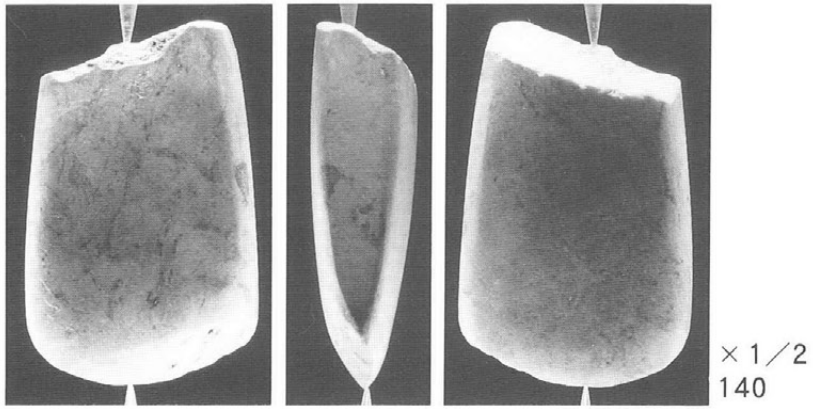
× 1/2  
137



× 1/2  
138



× 1/2  
139



石器写真 24

## 報告書抄録

ふりがな	はちまんうら に しゃしんずはんへん							
書名	八幡裏Ⅱ 写真図版編							
副書名	国立新病院（長野）の建設工事に伴う八幡裏遺跡発掘調査報告書							
巻次								
シリーズ名	上田市文化財調査報告書							
シリーズ番号	第61集							
編著者名	久保田敦子							
編集機関	上田市教育委員会							
所在地	〒386 長野県上田市天神 2丁目 4番74号 Ⅷ 0268(22)4100 内線 5123							
発行年月日	西暦1997年 3月25日							
ふりがな	ふりがな	コ ー ド		北緯	東経	調査期間	調査面積	調査原因
所収遺跡名	所在地	市町村	遺跡番号	〃	〃		m <sup>2</sup>	
はちまんうらい せき 八幡裏遺跡	うえだし 上田市 みどりがおか 緑が丘 いちちようめ 1丁目 ばん 27番	20203		138° 15' 3"	36° 24' 6"	平成6年 7月15日 から 11月4日	8,000m <sup>2</sup>	国立新病院（長野）の建設工事
所収遺跡名	種別	主な時代	主 な 遺 構		主 な 遺 物		特 別 事 項	
八幡裏遺跡	集落	縄文時代 平安時代 古墳時代	竪穴住居址 16 敷石住居址 7 掘立て柱建物址 1 土壇 46 集石 10 溝 1	縄文土器・土偶・ 土師器・須恵器・ 灰釉陶器・石鏃・ 石斧・大珠				

---

---

上田市文化財調査報告書 第61集

## 八幡裏遺跡Ⅱ

国立新病院(長野)の新築工事に伴う発掘調査  
写真図版編

発行日 平成9年3月25日  
発行 厚生省関東信越地方医務局  
上田市  
上田市教育委員会  
〒386 長野県上田市天神2-4-74  
☎ (0268) 22-4100  
印刷 田口印刷株式会社

---

---

