



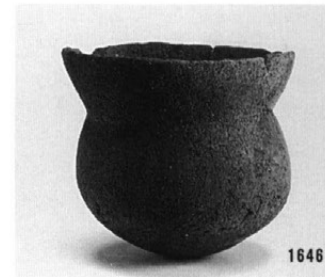
2894



0134



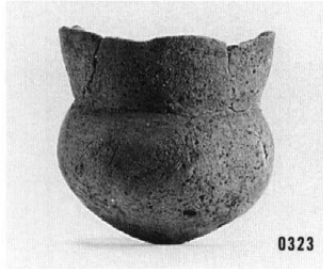
1451



1646



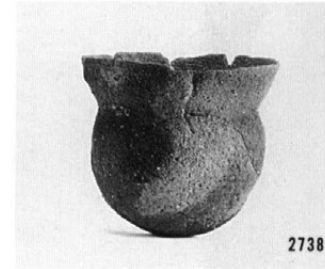
1643



0323



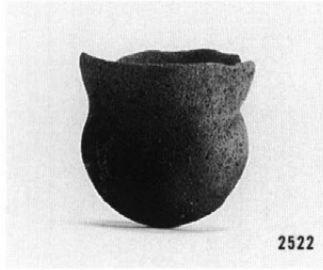
0322



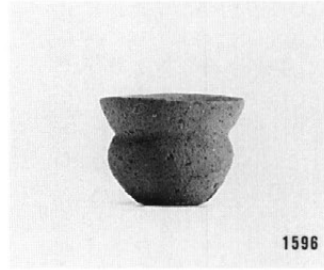
2738



0332



2522



1596



0242



1850



0002



2739



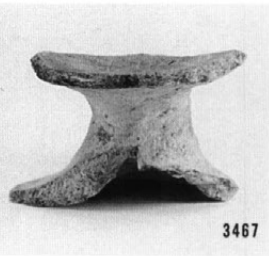
1743



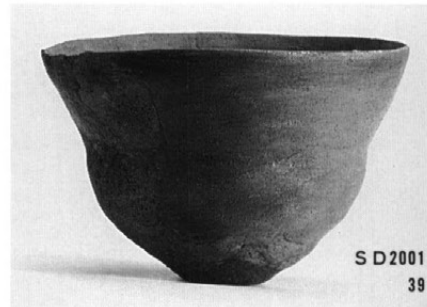
1842



3080



3467



SD2001
39



SD2001 17



SD2001
38



SD2013
1



SD2013
2



SD2013 11



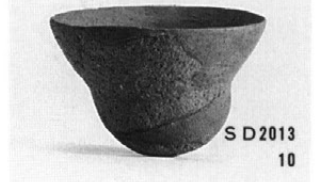
SD2014
3



SD2013
5



SD2014
2



SD2013
10



2365



0814



1482



0477



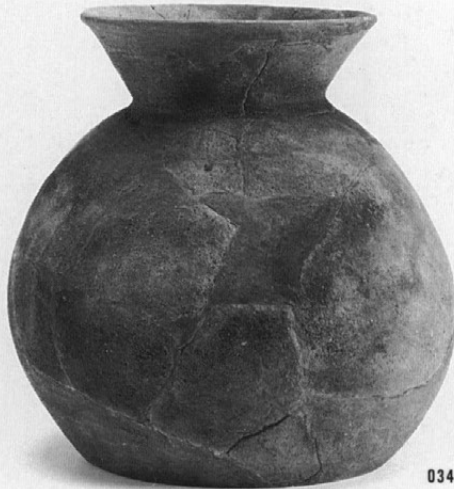
0833



1454



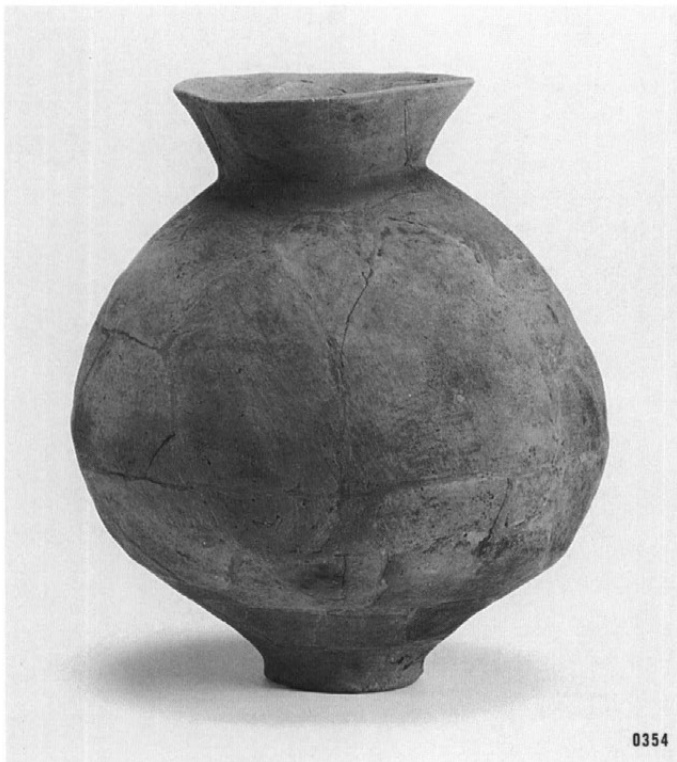
2789



0340



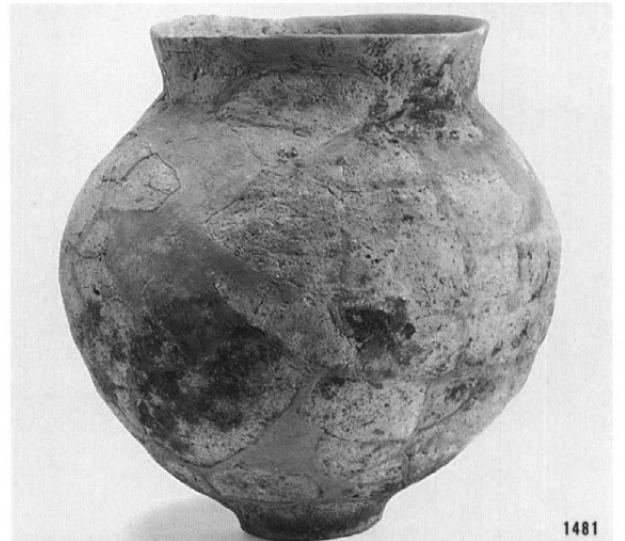
1455



0354

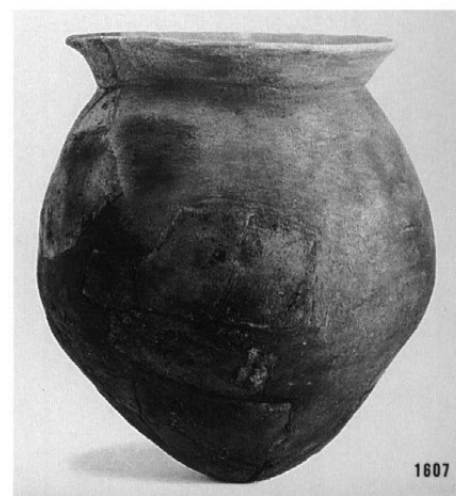
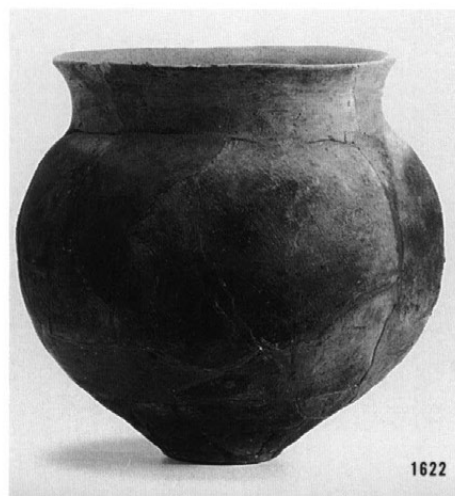
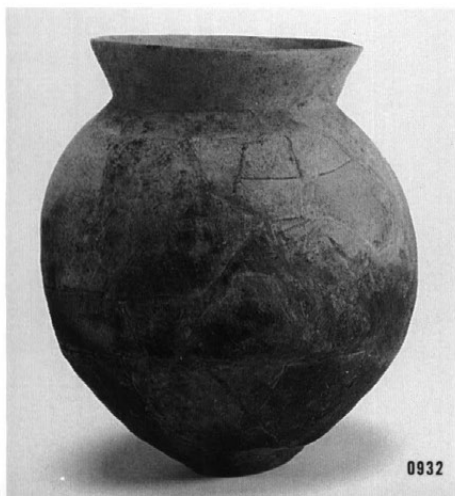
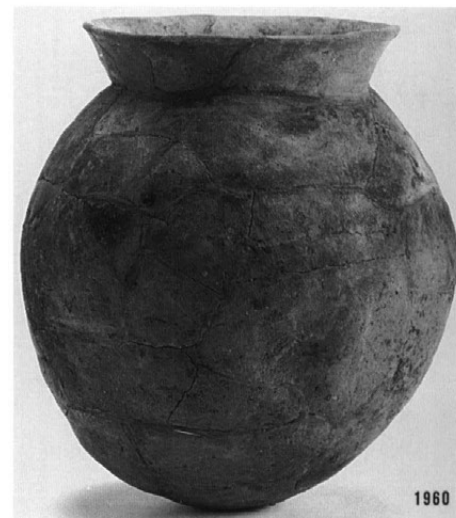
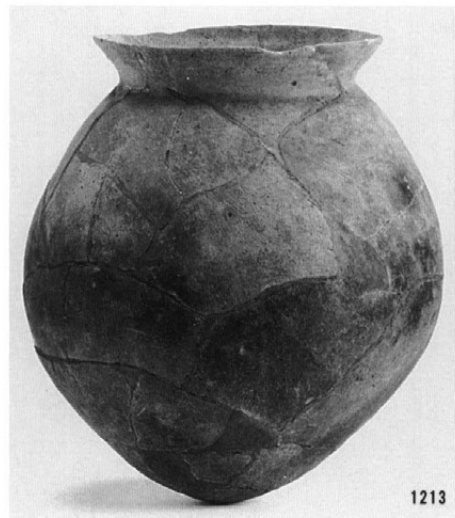
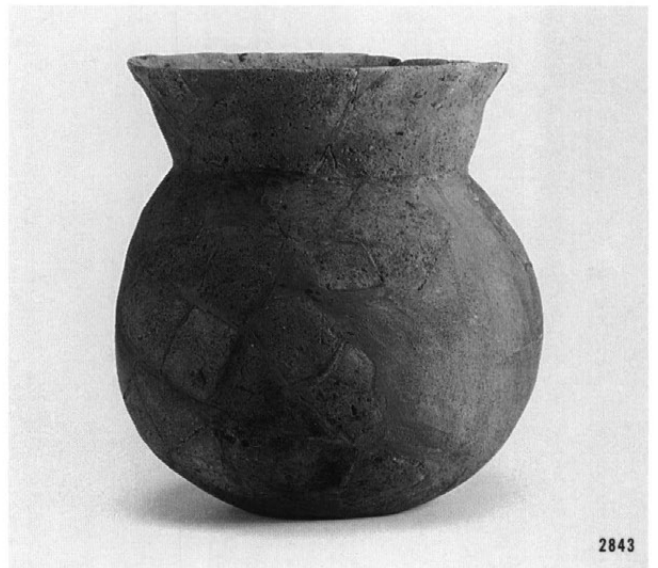
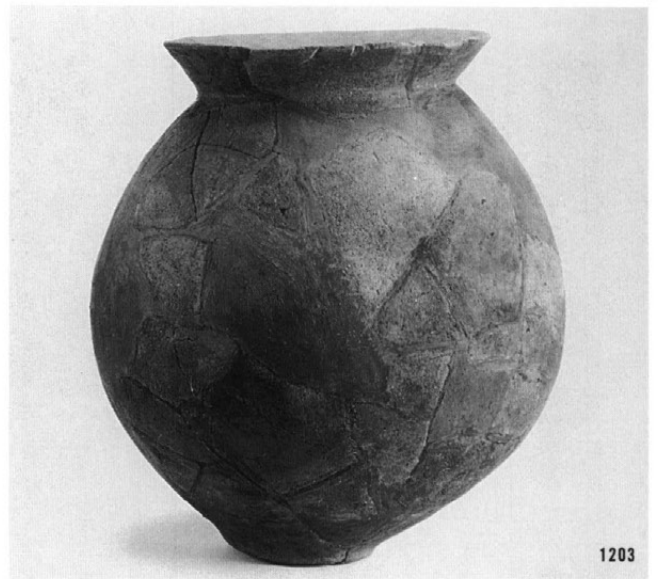


0818



1481

※番号は収納番号、実測図との対応は観察表に掲載





1604



2072



0996



0944



1945



0075



1620



0064



0874



0475



1601



1619



1872



1623



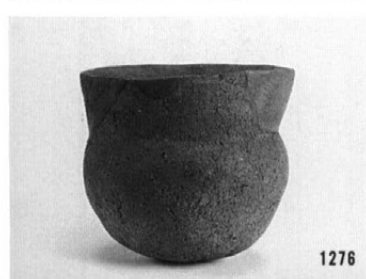
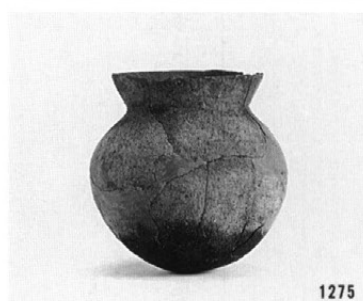
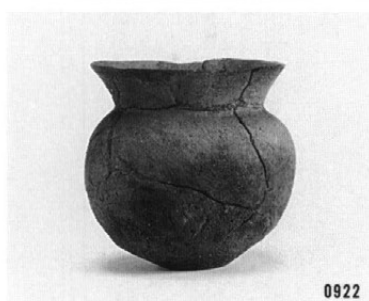
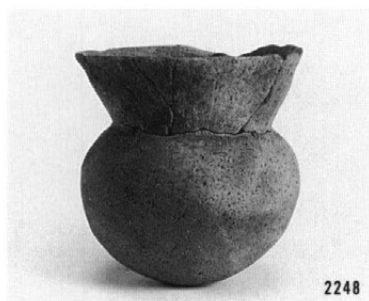
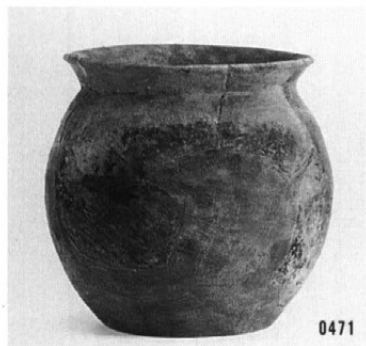
0454



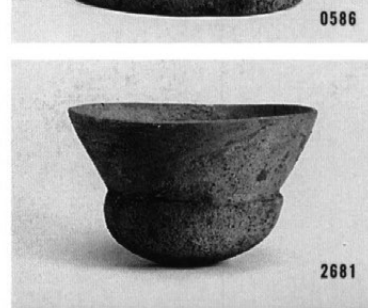
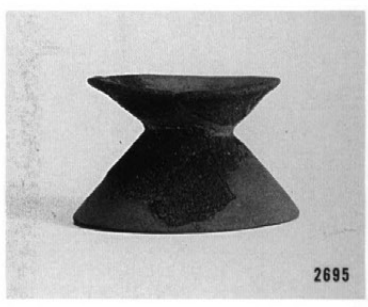
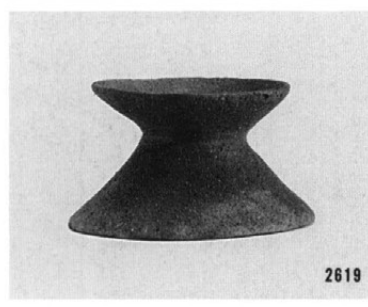
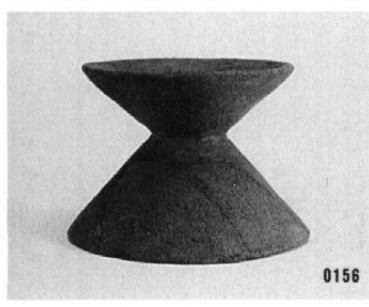
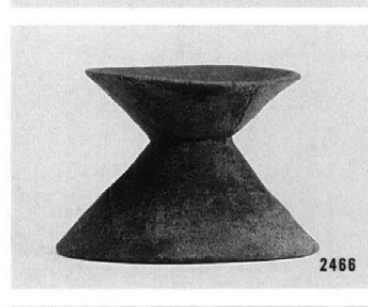
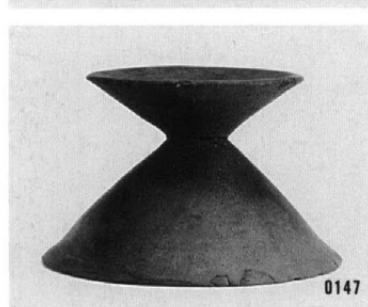
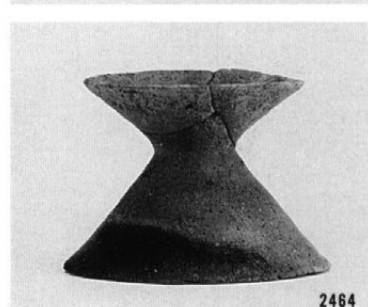
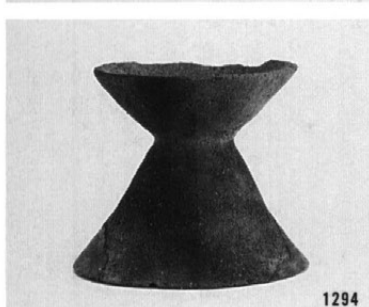
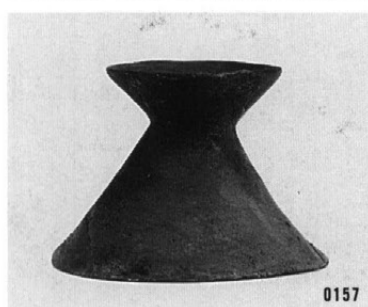
1625



0923









1661



0522



1692



0131



1653



2029



2450



2439



1274



2688



0575



0537



1666



0139



1681



2259



2441



0126



2449



2682



1693



2444



1273



2680



1277



0566



0535



0569



1647



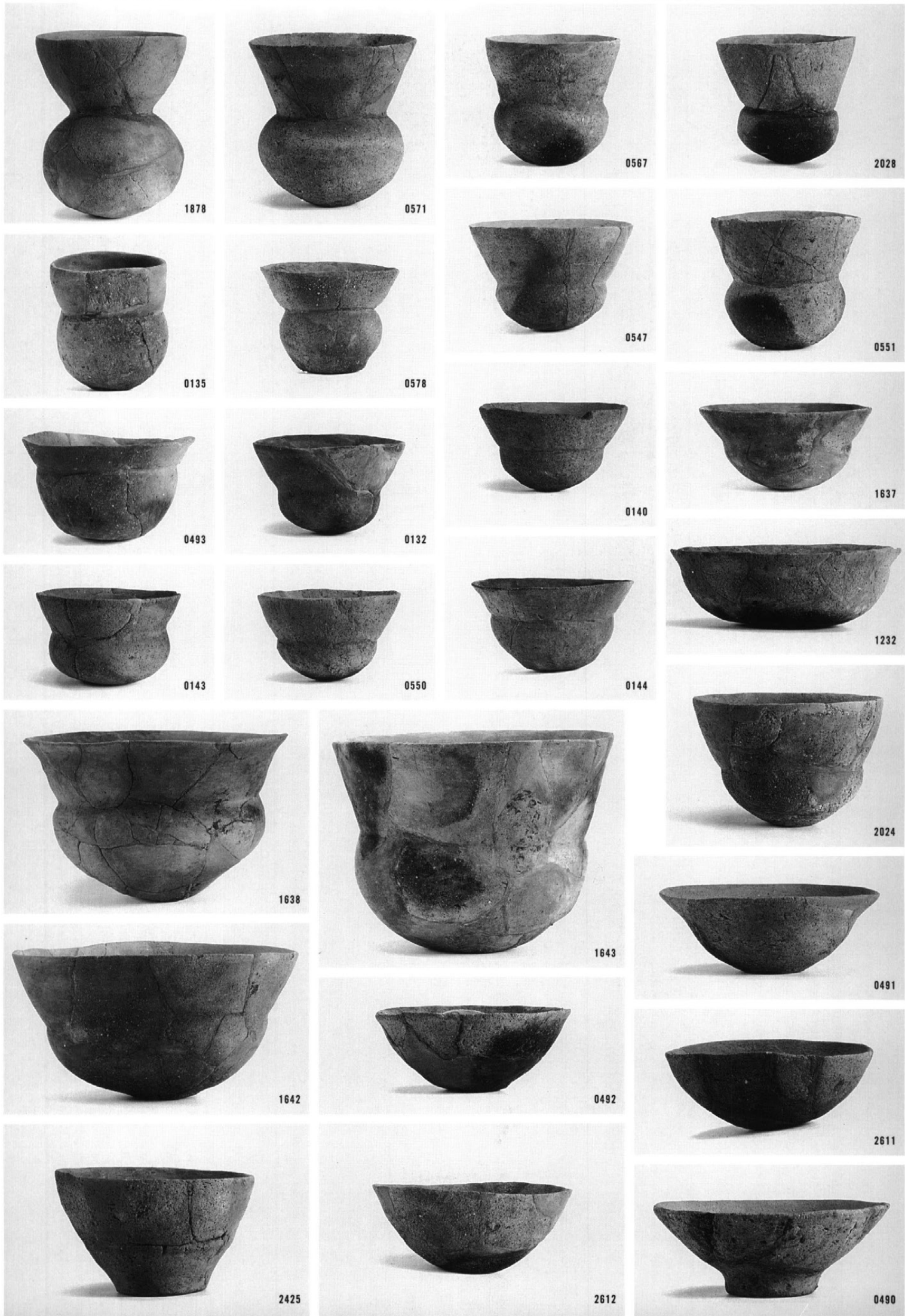
0138

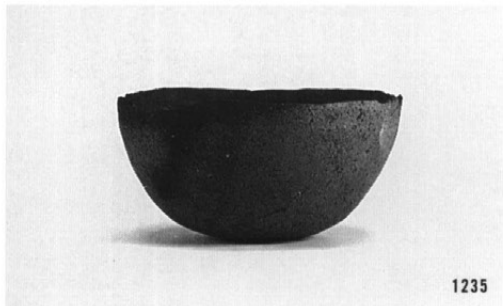


0141



0128





1235



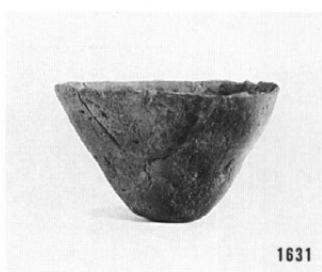
2384



1630



1629



1631



SQ1004 6



SQ1004 5



SQ1004 93



SQ1004 26



SQ1005 25



SQ1005 24



SQ1005 12



SQ1005 3



SQ1005 2



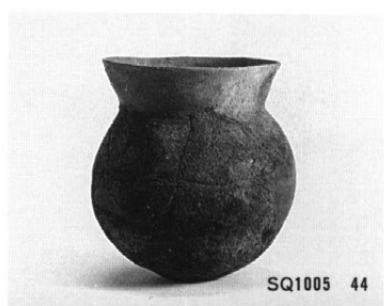
SQ1005 71



SQ1005 75



SQ1005 66

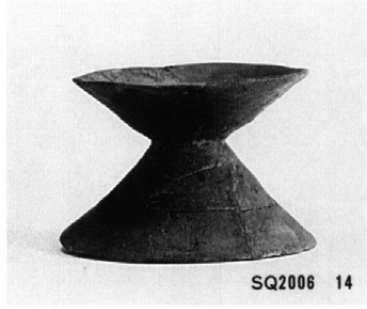


SQ1005 44



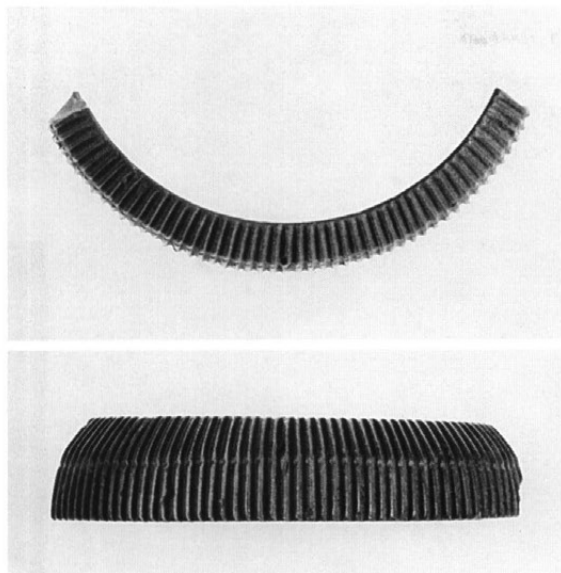
SQ1005 45

※番号は収納番号、実測図との対応は観察表に掲載

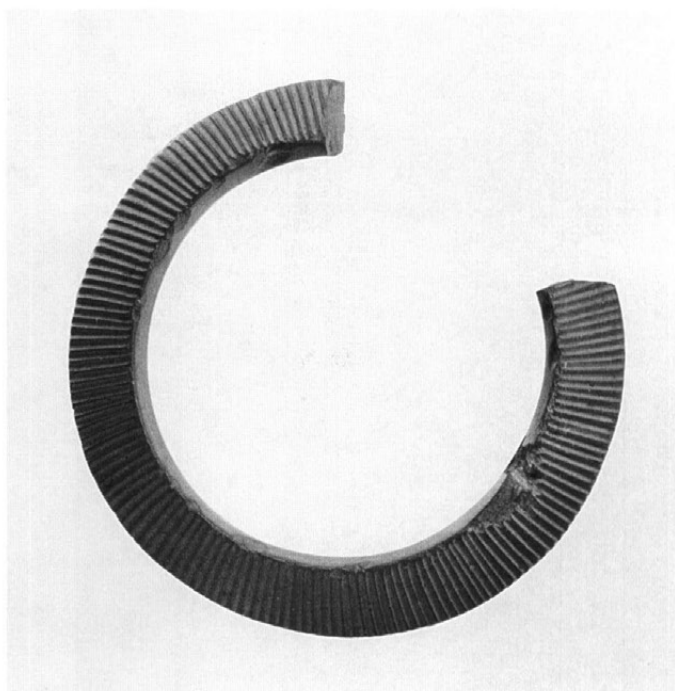


※番号は収納番号、実測図との対応は観察表に掲載

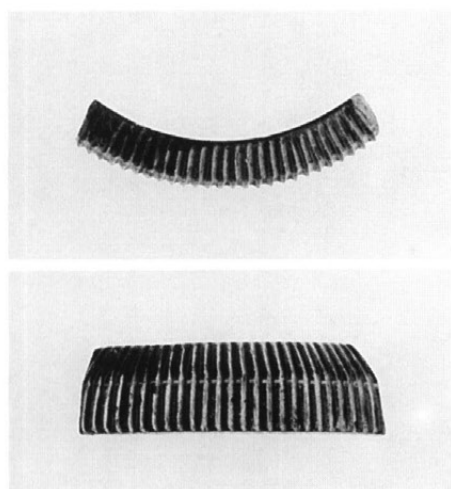
(1:1)



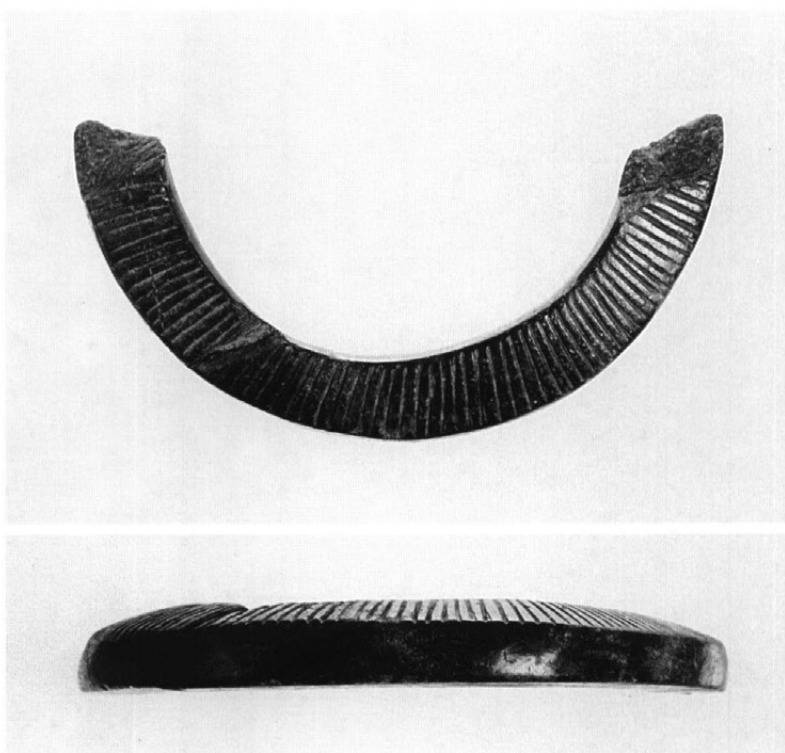
⑤-1区 SD1016



⑧-1区 SD1016



⑦-2区
S Q1004



⑩-1区 SD1016
S K2878



⑩-1区
SD1016

上

内

(1:1)

1 筒型石製品

S Q2016

2 紡錘車型石製品

S K1046

外

2

下

1

3~10 勾玉

3 ⑤-1区検出面

4 S K2441

5 S K2757

6 S K2331

7 S D1016

⑦-1区IVFG02

8 S D1016

⑩-1区VWD11

9 S D1016

⑩-1区VWC14

10 S D1016

⑩-1区VWG12

3

4

5

6

7

8

9

10



11



12



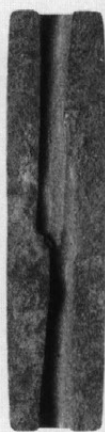
13



14



15



15-裏



16



17



18



19



20



21



22



23



24



25



26



27

11~27

11 S K2828

12 S K2759

13 S K2759

14 S Q2016

⑩-1区VRL15

15 S D1016

⑤-1区IIEP08

16 S D1016

⑩-1区VWG12

17 S Q1004

⑤-1区IIIL09

18 S D1016

⑤-1区IIEP08

19 S K2027

20 S K2063-B

21 S K2189

22 S K2865

23 S D1007

24 S D1016

⑤-1区IIEP09

25 S D1016

⑤-1区IIEO09

26 S D1016

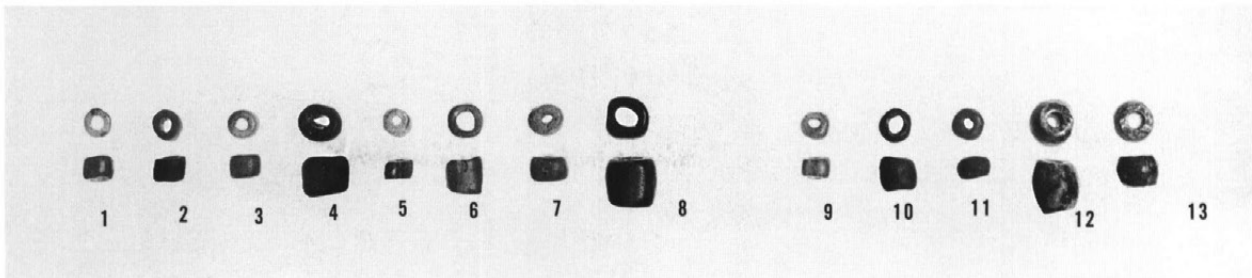
⑩-1区VWB13

27 S D1016

⑧-1区IVBF12

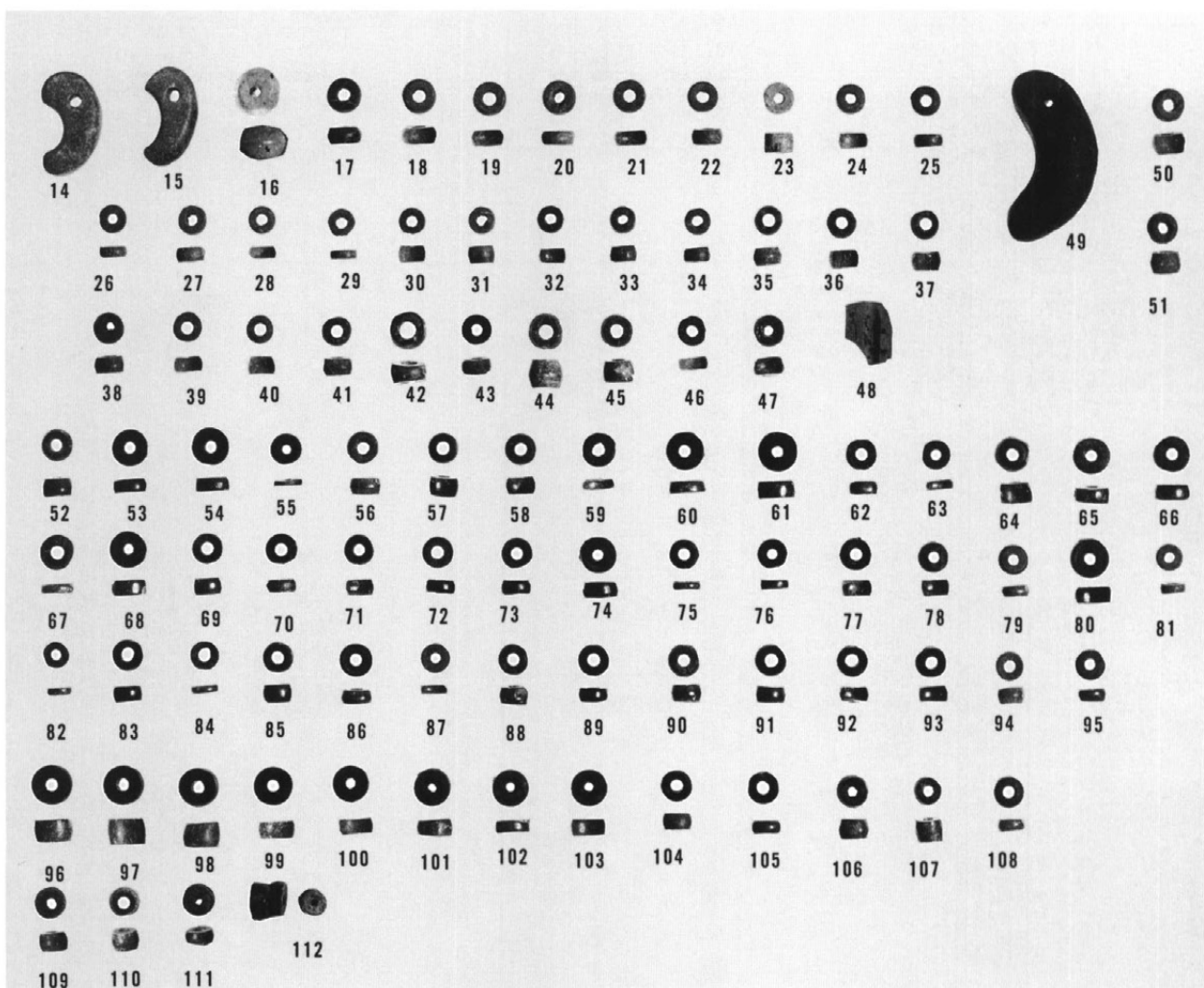
ガラス小玉・白玉

- 1~13(1:1)
 1 S K2863
 2 S Q1004
 II J Q08
 3 S Q2016
 VRN01
 4 S D1016
 ⑩-1区VWE16
 5 S D1016
 ⑩-1区
 6 S D1016
 ⑩-1区VWC14
 7 S D1016
 ⑩-1区VWC14
 8 S D1016
 ⑩-1区VWE16
 9~13 S Q2020
 12滑石製裏玉
 13滑石製白玉



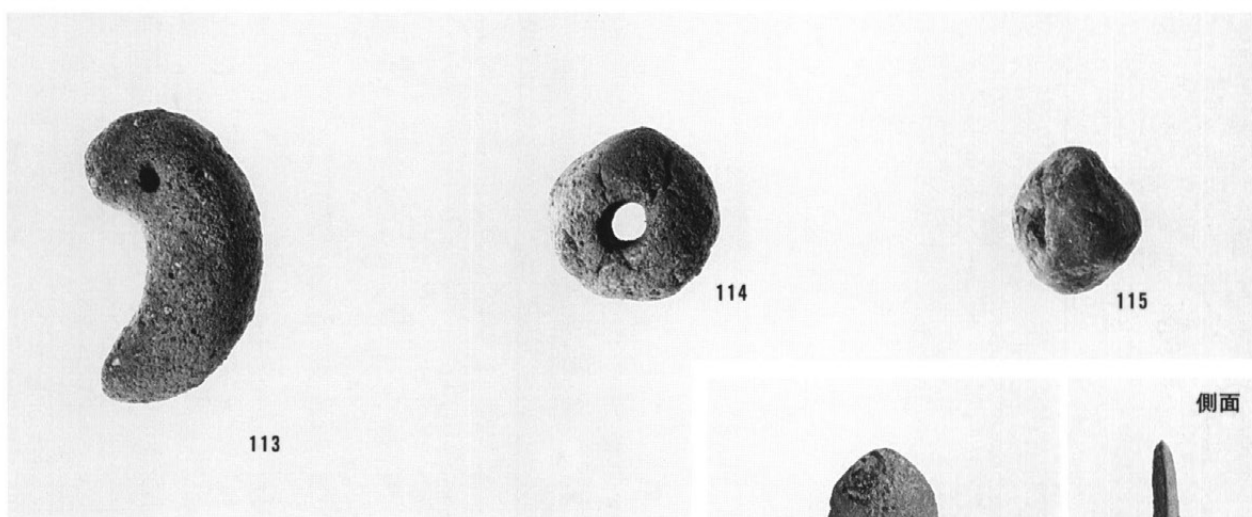
小勾玉、白玉、管玉

- 14~112(1:1)
 14~35 S K2827
 36~41 S K2827?
 42 S K2047
 43 S K2759
 44・45 S K2871
 46 S K2843
 47 S Q2017
 48 S K2751(管玉)
 49 S D1016⑦-2区
 (土製勾玉)
 50・51 S D1016
 ⑦-2区?
 52~95 S D1016
 ⑩-1区(VWE16)
 96~107 S D1016
 ⑩-1区(VWE16)
 108 S D1016⑩-1区
 109~112 S D1016
 ⑩-1区(VWE16)



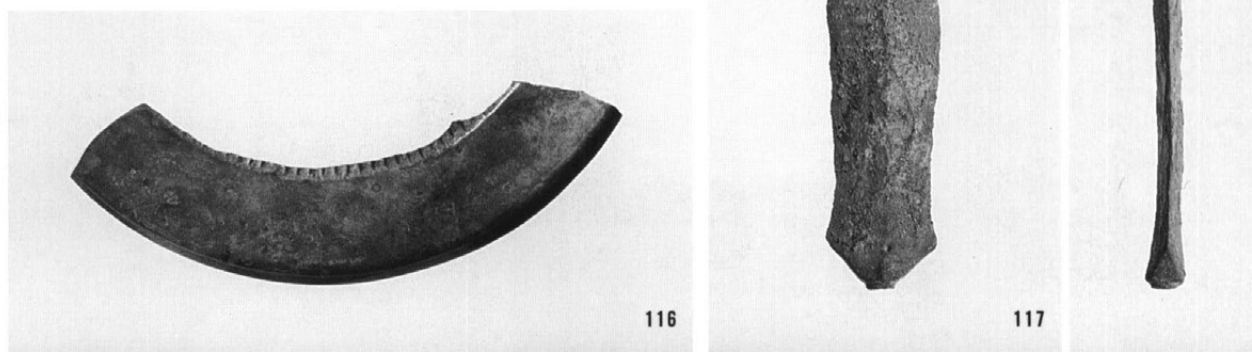
土製勾玉・土玉

- 113~115(1:1)
 113 S Q2016
 114 S D1016
 115 S K1050



銅鏡116
 S D1016

銅鏃117
 S D1016



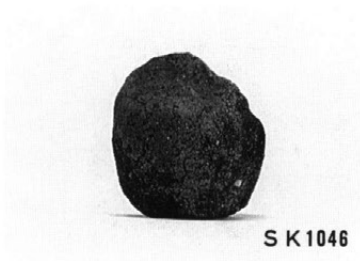
(1:1)

116

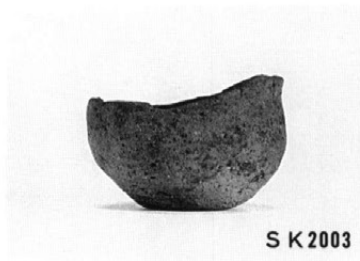
117



SK 1025



SK 1046



SK 2003



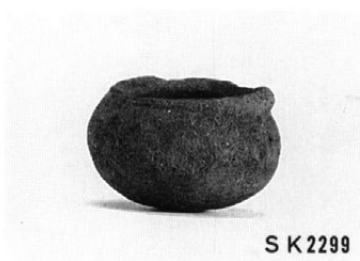
SK 2054



SK 2127



SK 2208



SK 2299



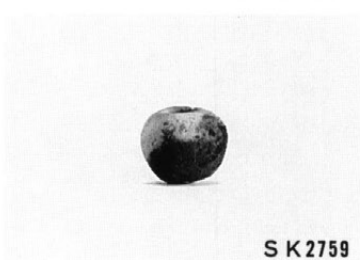
SK 2478



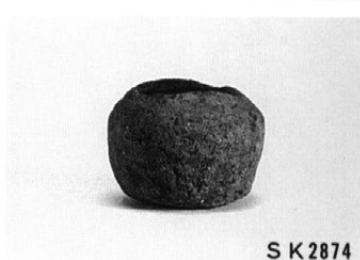
SK 2744



SK 2748



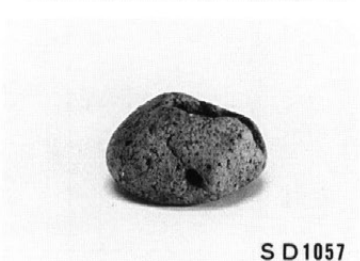
SK 2759



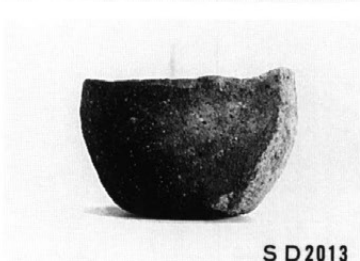
SK 2874



SD 1007



SD 1057



SD 2013



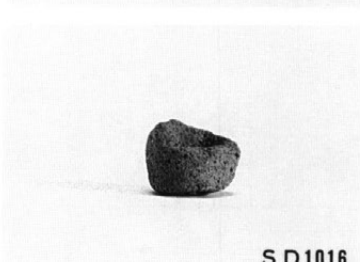
SD 1016



SD 1016



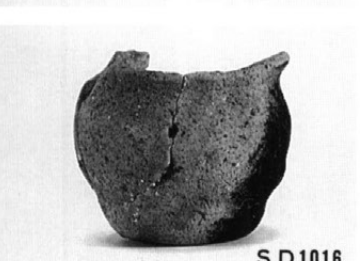
SD 1016



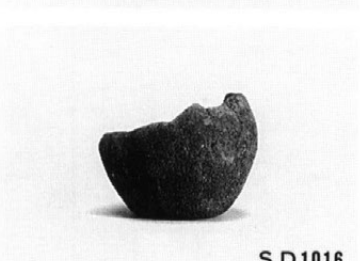
SD 1016



SD 1016



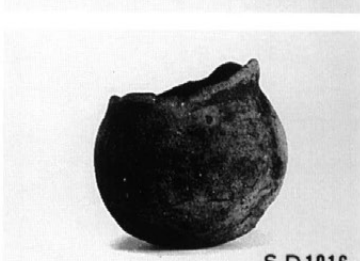
SD 1016



SD 1016



SD 1016



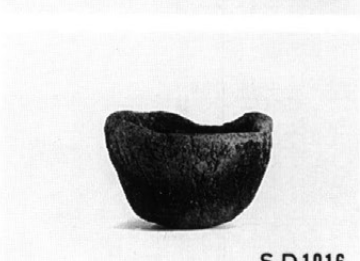
SD 1016



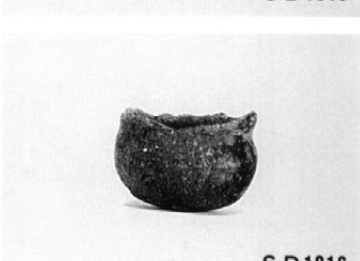
SD 1016



SD 1016



SD 1016



SD 1016



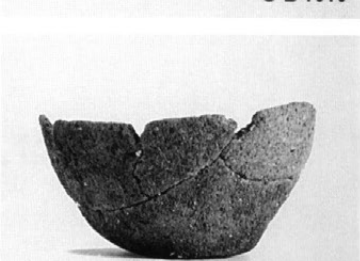
SD 1016



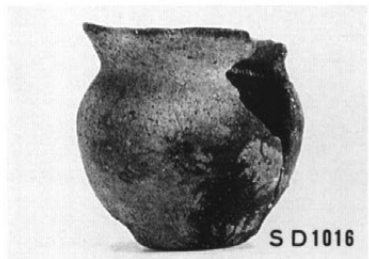
SD 1016



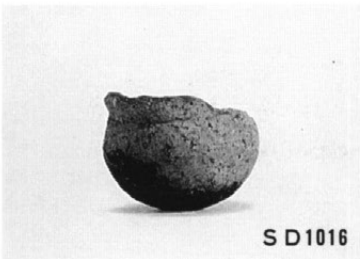
SD 1016



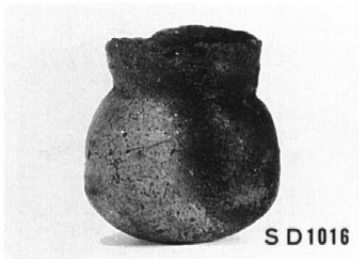
SD 1016



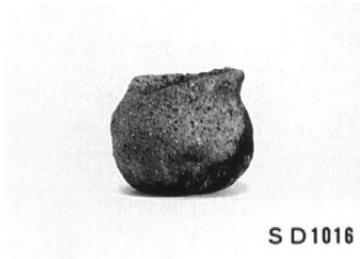
SD1016



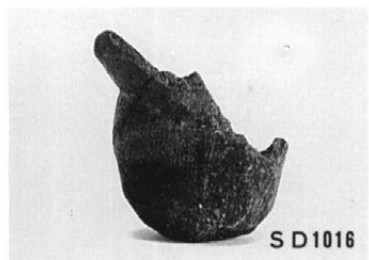
SD1016



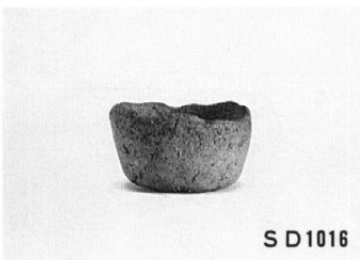
SD1016



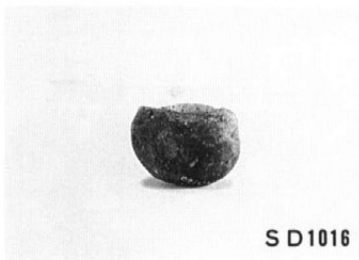
SD1016



SD1016



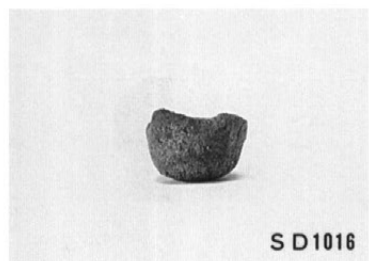
SD1016



SD1016



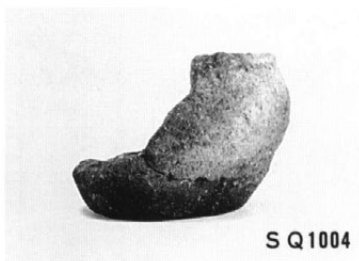
SD1016



SD1016



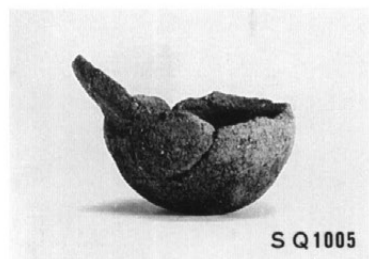
SX1001



SQ1004



SQ1004



SQ1005



SQ2006



SQ2016-2



SQ2016-2



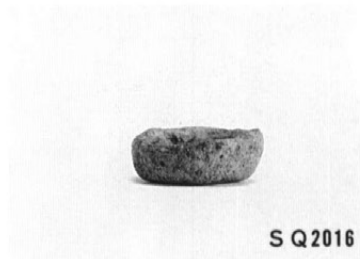
SQ2016-2



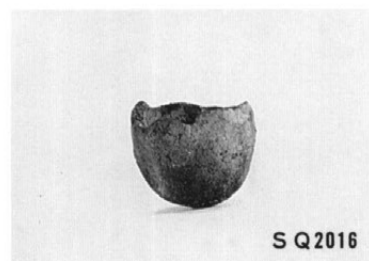
SQ2016-2



SQ2016-3



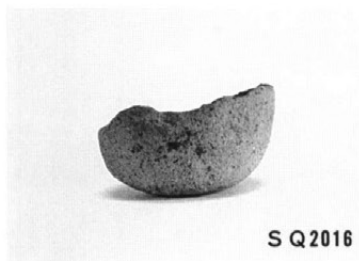
SQ2016



SQ2016



SQ2016-2



SQ2016



SQ2016-2



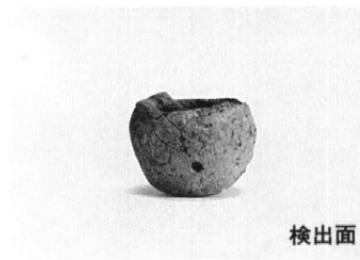
SQ2016-2



SQ2016-2



SQ2016



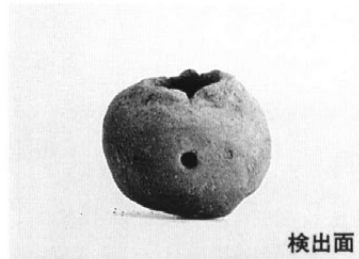
検出面



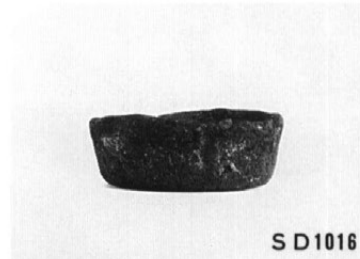
検出面



検出面



検出面

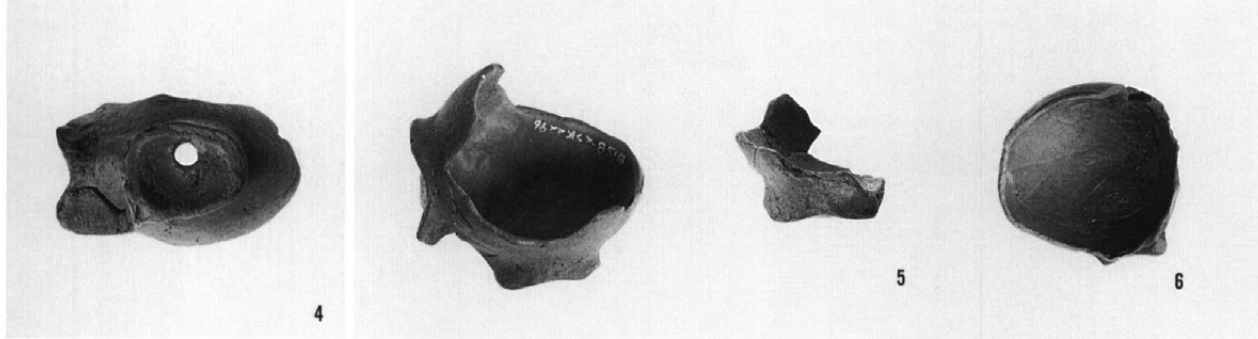
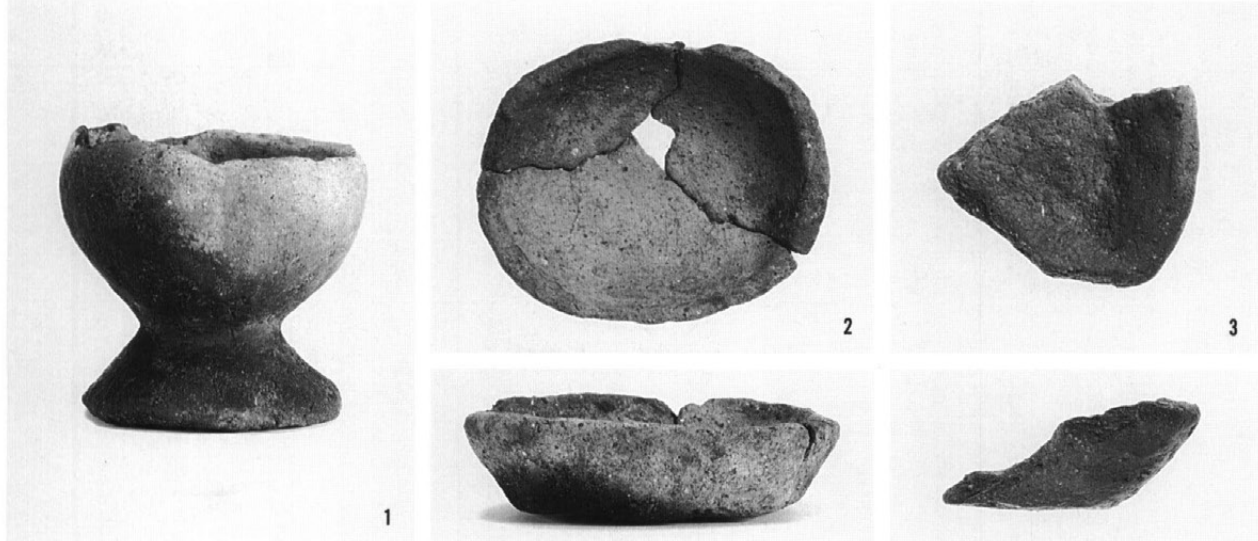


SD1016

異形土器・ミニチュア土器

1~6 (1:2)

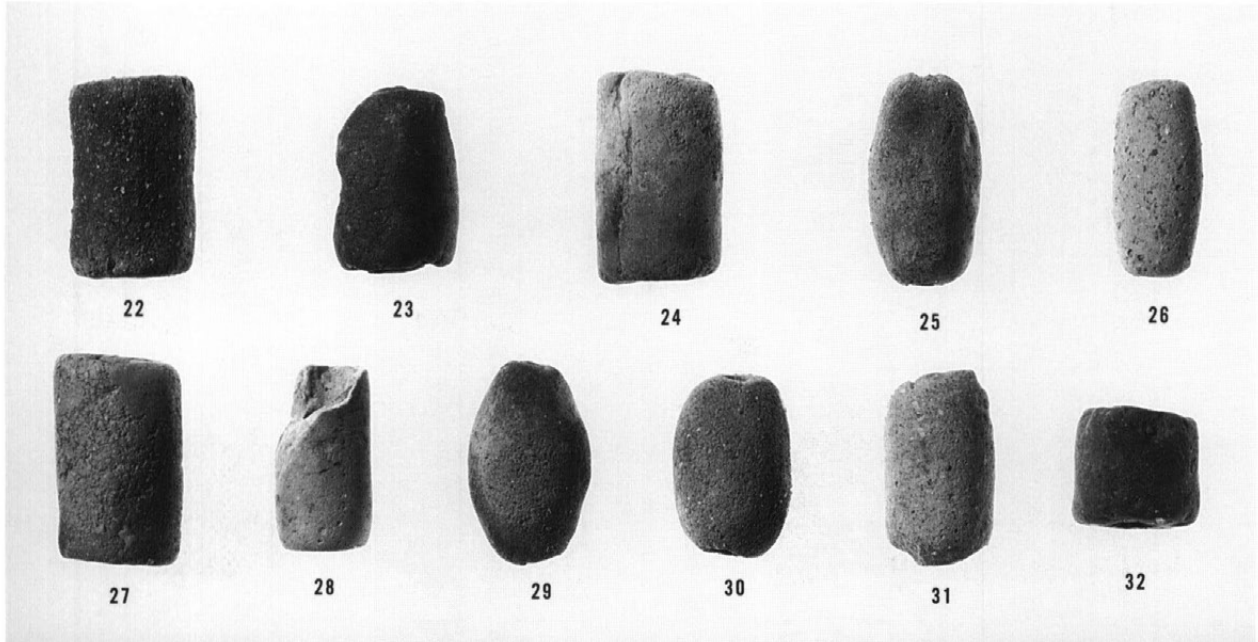
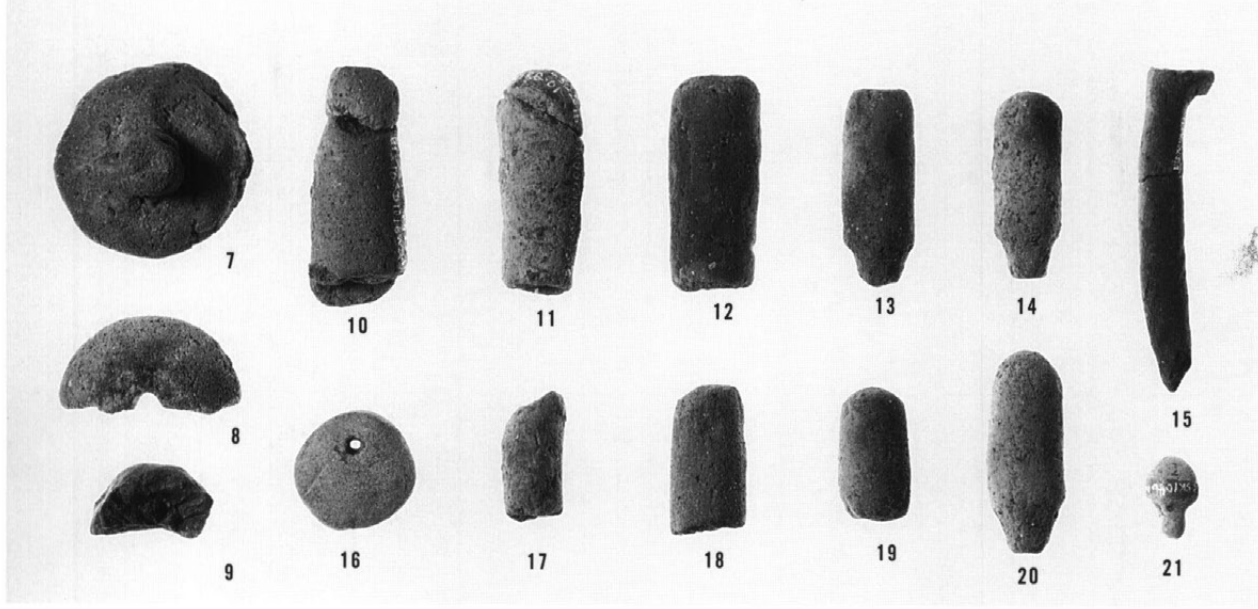
- 1 SK2063
- 2 SQ1004
- 3 SQ2016
- 4 SK2296
- 5~6 SD1016



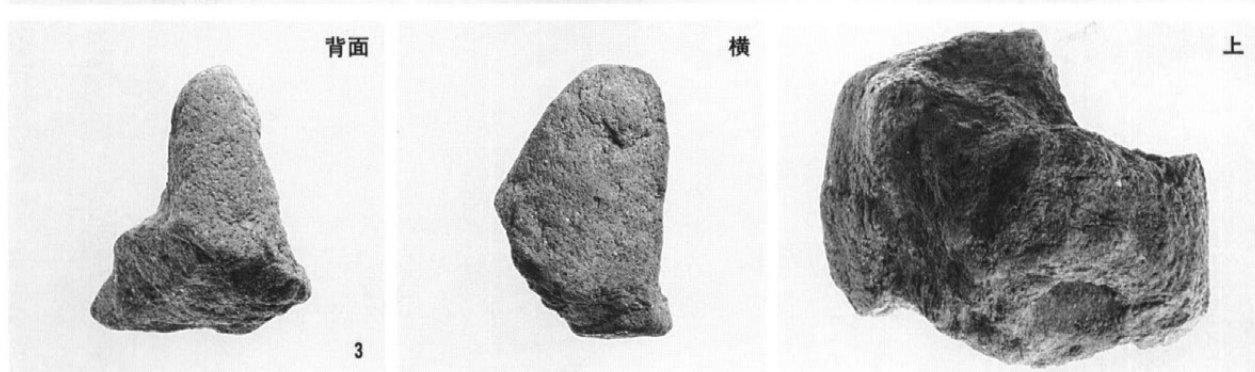
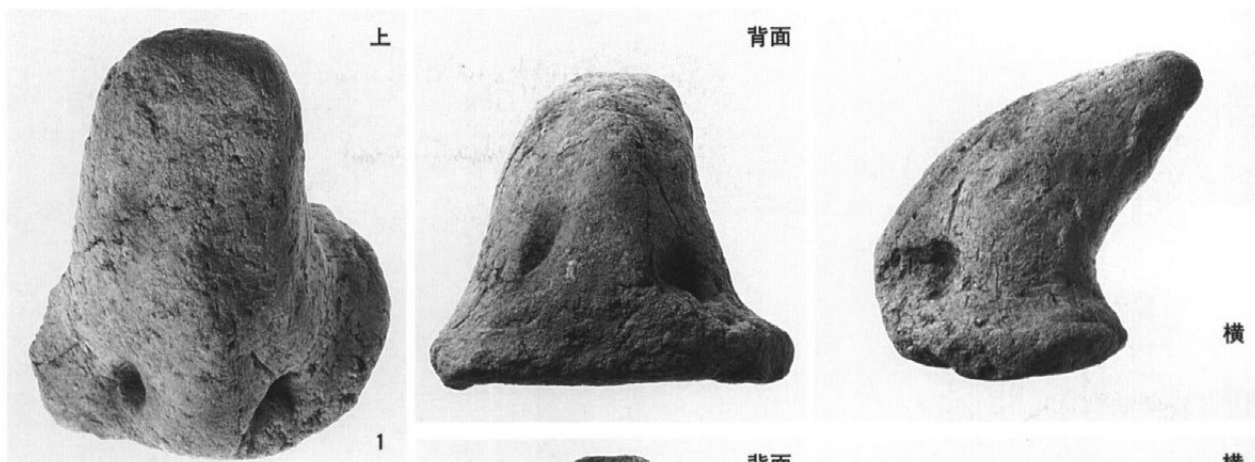
土製模造具

7~21 (1:2)

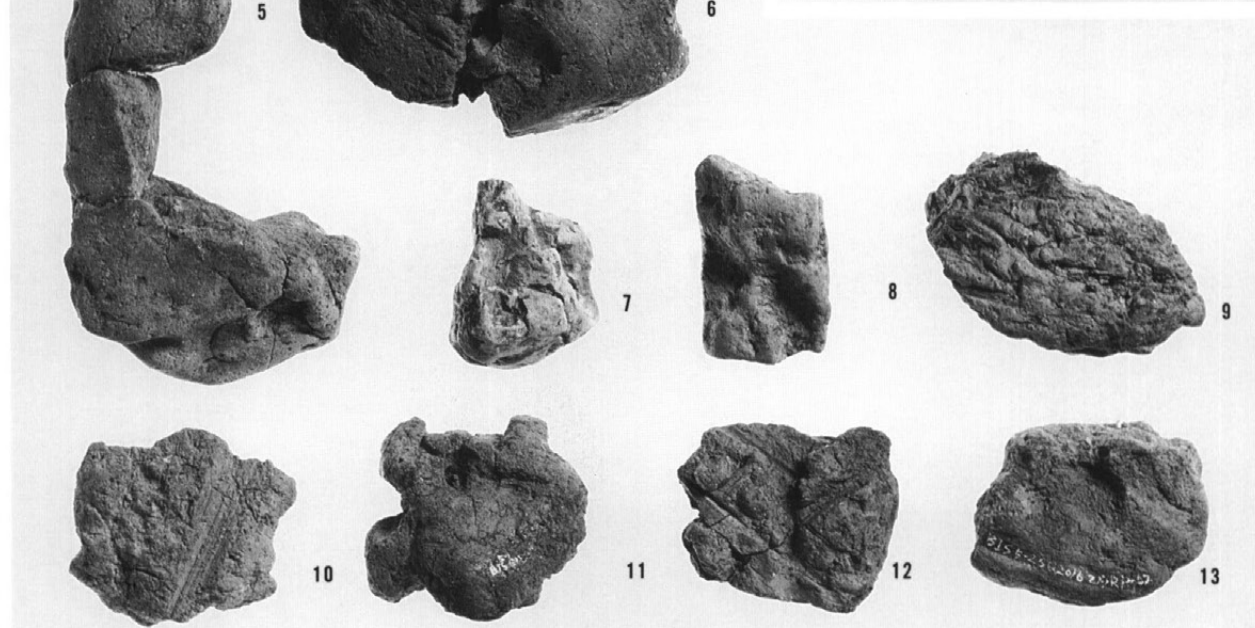
- 7 SQ2016
- 8 SD1016
- 9 SQ2016
- 10 SD1016
- 11 SQ2016
- 12 SK2057
- 13~15 SQ2016
- 16 SD2007
- 17 SQ2016
- 18 SD1016
- 19~20 SQ2016
- 21 SK1046
- 22 SK2745
- 23 SK2874
- 24 SD1016
- 25 SQ2016
- 26 SD1016
- 27 SQ2016
- 28 SQ1004
- 29 SK2565
- 30 SK2564
- 31 SD1011
- 32 SD1038



- 1 SD1007
- 2 SD2013(近世)
- 3 SD1016
- 4 SK2208

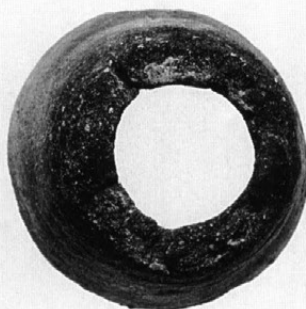


- 粘土塊・支脚
- 5 SD1016
 - 6 SQ2016
 - 7 SQ2016
 - 8 SQ2016
 - 9 SQ2016
 - 10 SQ2016
 - 11 ⑤-1区検出面
 - 12 SK2208
 - 13 SQ2016





1



2



3

- 1~4 羽口(1:3)
- 1 SD1016
- 2 SK2751
- 3 SQ2016
- 4 SK2744



4



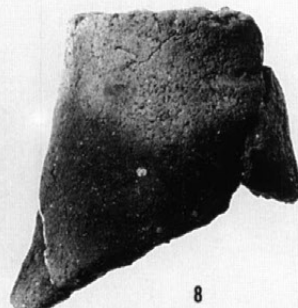
5



6



7



8

- 5~17
- 羽口(1:2)
- 5 SD1016
- 6 SD1016
- 7 SD1016
- 8 SD1016
- 9 SD1016
- 10 SK1013
- 11 SD1016
- 12 SD1016
- 13 SD1016
- 14 SD1016
- 15 SK2832
- 16 SK2745
- 17 SD1016



9



10



11



12



15



13



14



16

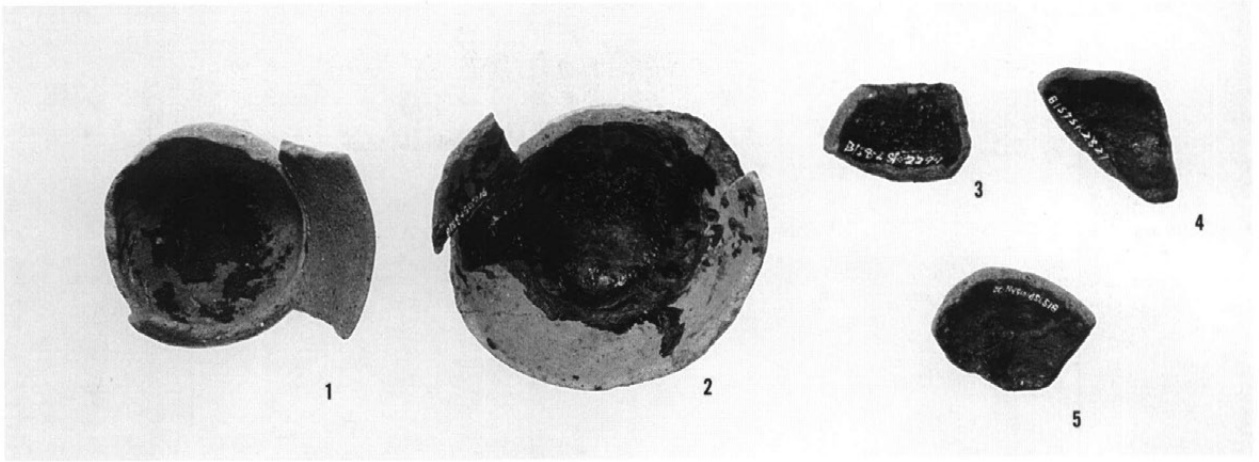


17

漆附着土器(1:2)

1~5

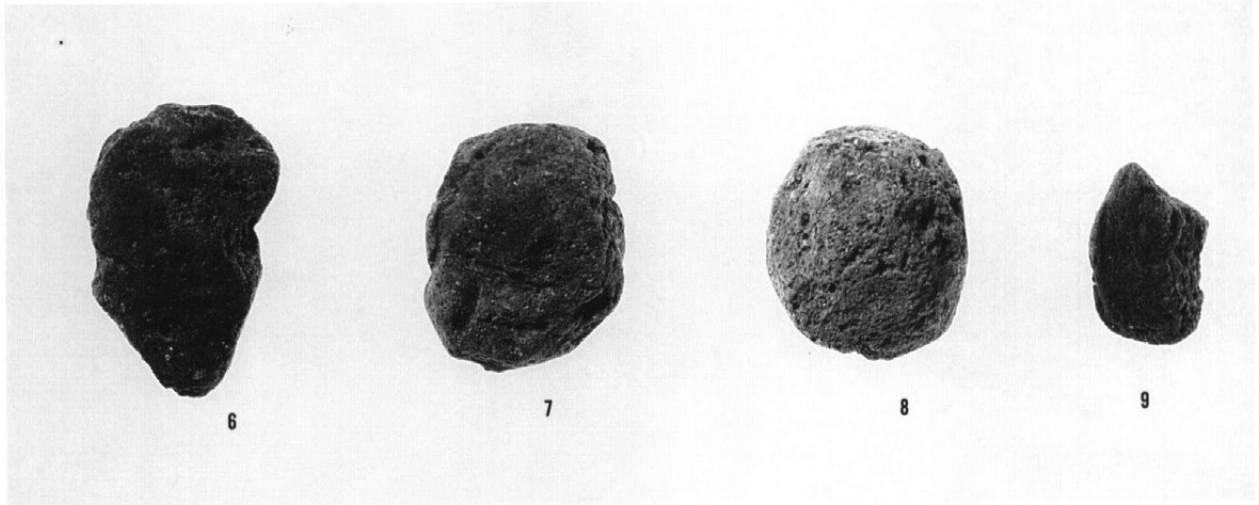
- 1 SK2291
- 2 SD1016
- 3 SK2294
- 4 SK2827
- 5 SD1016



軽石製品

6~9(1:2)

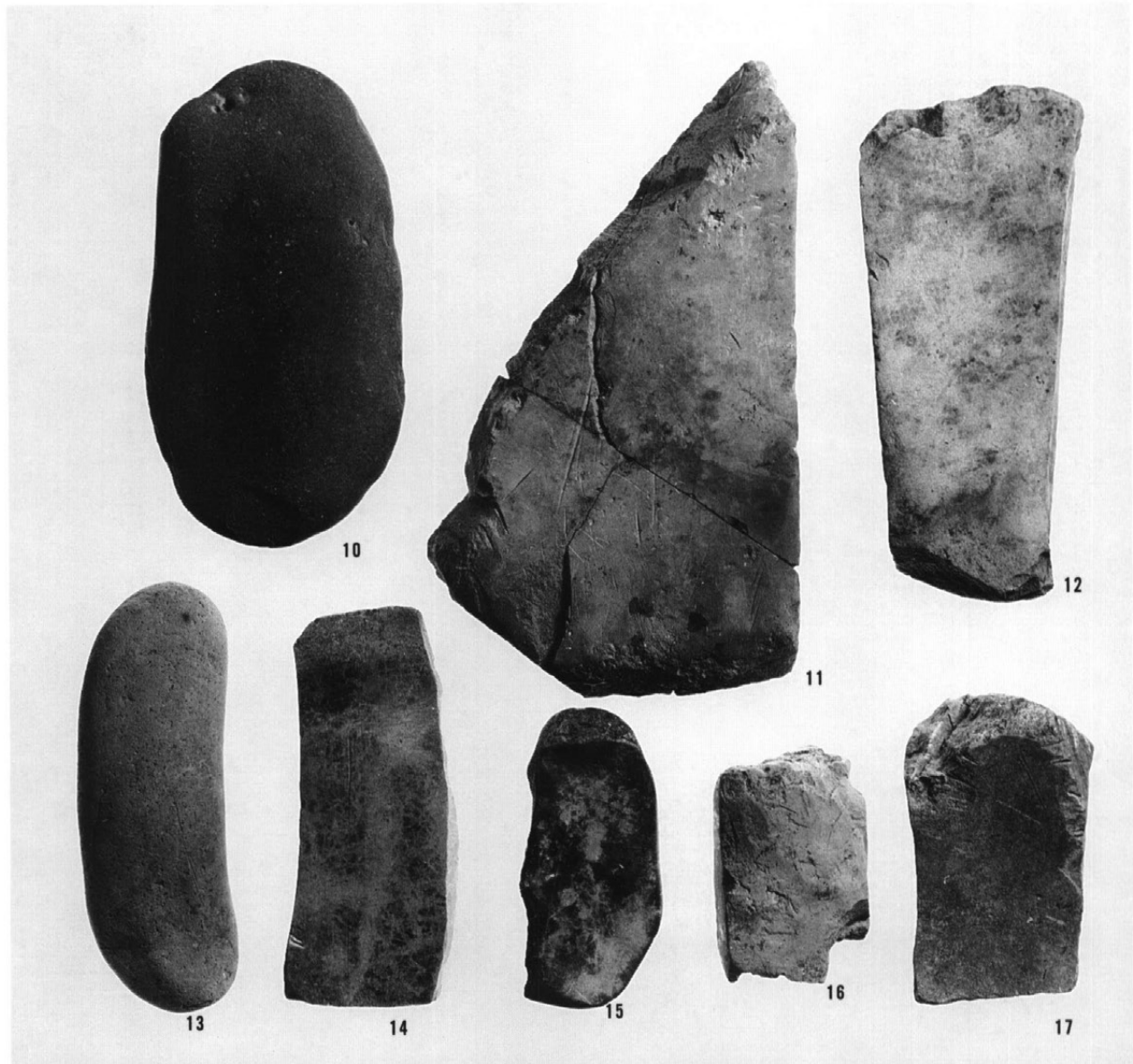
- 6 SK1025
- 7 SK1031
- 8 SK2101
- 9 SQ2016

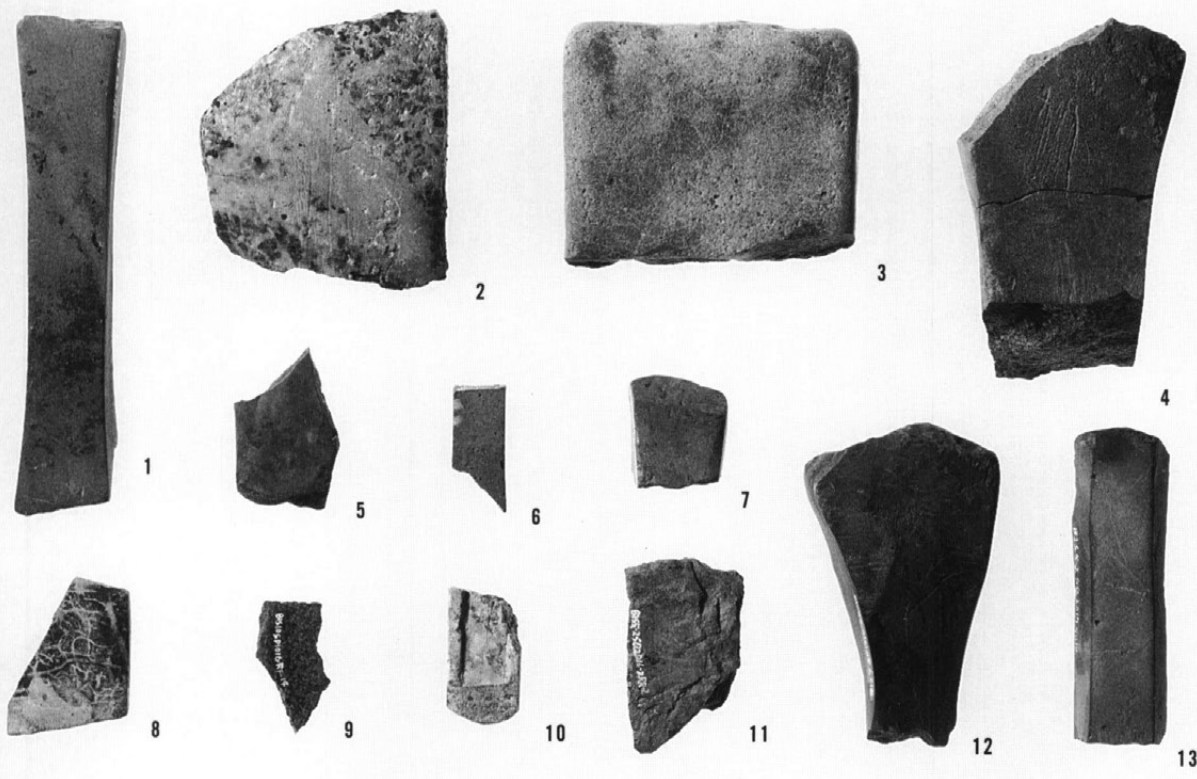


砥石

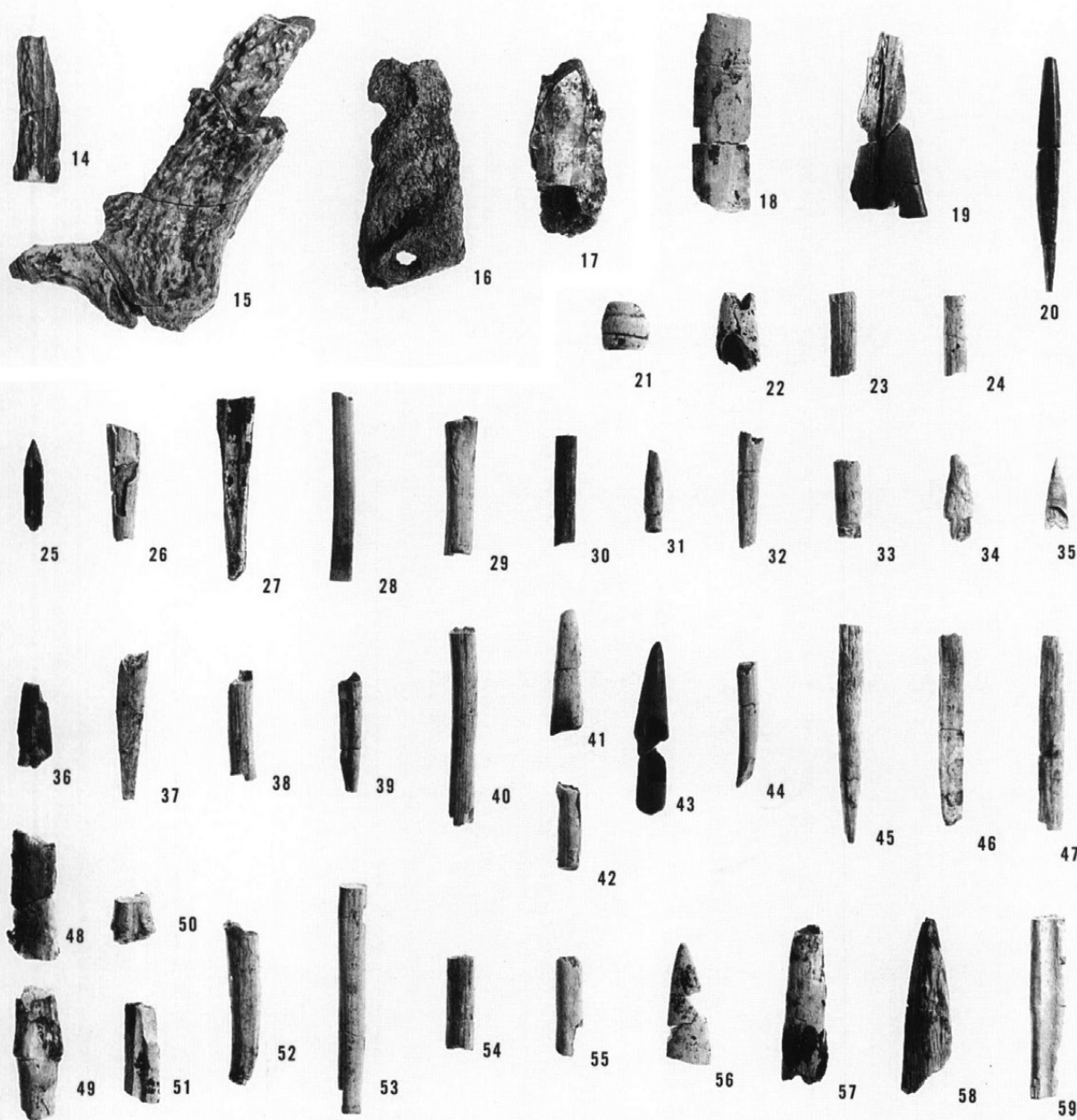
10~17(1:3)

- 10 SK2068
- 11 SK2154
- 12 SK2759
- 13 SQ1002
- 14 SQ2002
- 15 SD1016
- 16 SQ2016
- 17 SQ2017





- 砥石
 1~13(1:2)
 1 SK1023
 2 SK1050
 3 SD1016
 4 SK2213
 5 SK2377
 6 SK2757
 7 SD1007
 8 SD1016
 9 SD1016
 10 SD1016
 11 SQ2016
 12 SD1016
 13 SQ2017



- 骨角器
 14~17(1:2)
 18~59(1:1)
 14 SK2048
 15 SQ2016
 16 SD1016
 17 SK2063B
 18 SK2047
 19 SK2744
 20 SK2751
 21 SK1033
 22 SK2172
 23・24 SK2747
 25~29 SK2756
 30 SK2757
 31~33 SK2759
 34~46 SK2827
 48~56 SD1016
 57 SD2018
 58 SQ2016
 59 SQ2007

(財)長野県埋蔵文化財センター発掘報告書 26

中央自動車道長野線埋蔵文化財発掘調査報告書15

—長野市内その3—

石川条里遺跡

第2分冊

発行 平成9年(1997)12月25日発行
発行者 日本道路公団名古屋建設局
長野県教育委員会
(財)長野県埋蔵文化財センター
〒387 長野県更埴市屋代260-6
TEL 026-274-3891
FAX 026-274-3892
印刷 信毎書籍印刷株式会社

