

SD1016-7
(⑦-2区)

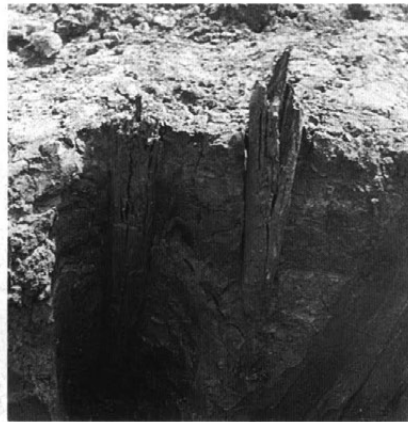
左 櫛出土状況
右 同 拡大



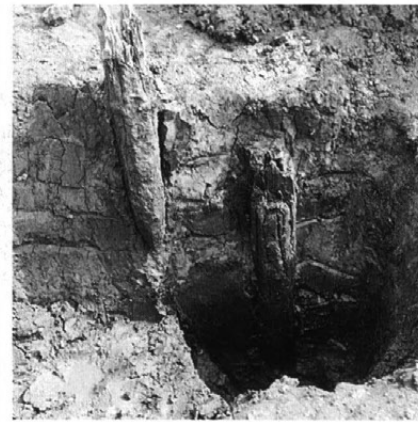
左 籠出土状況
右 鹿角出土状況



左 西辺完掘状況
右 南辺完掘状況



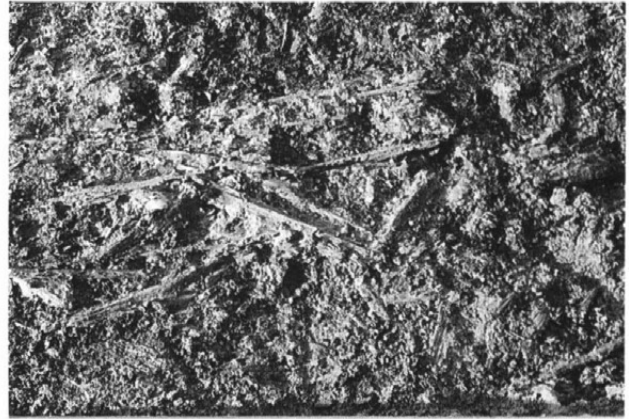
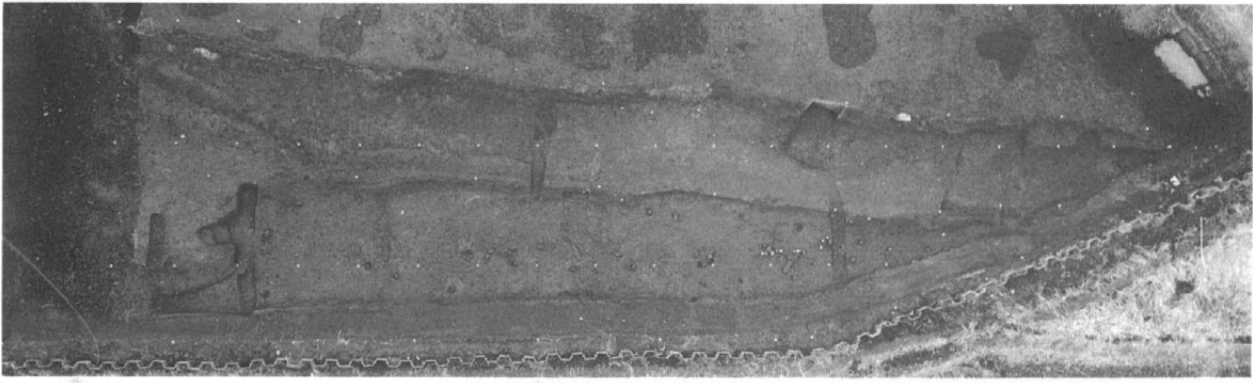
左、中、右
杭断面



左、中、右
杭断面

SD1016-8
(⑧-1、⑤-2区)

⑧-1区
完掘状况



左 完掘状况
右上 木材出土状况
右下 木材出土状况



⑤-2区
SD1016木材出土状况



左上 完掘状況
左下 土層
右 杭検出状況



左 木材出土状況
右 同上



左 木材出土状況
右 同上



左 土器出土状況
右 同上

S D1016-10
(⑩-1区)



S D1016木材出土状況



左上 S D1016土層
左下 同 拡大



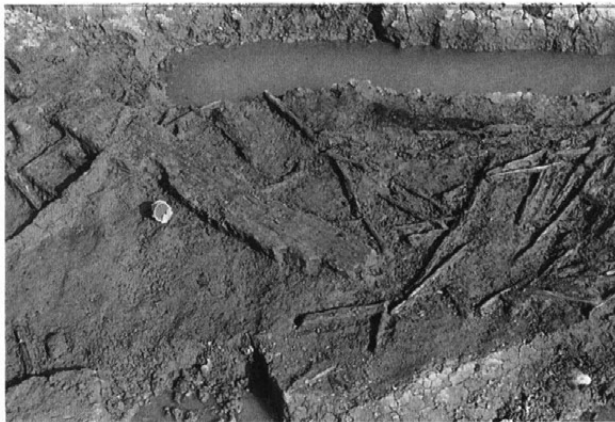
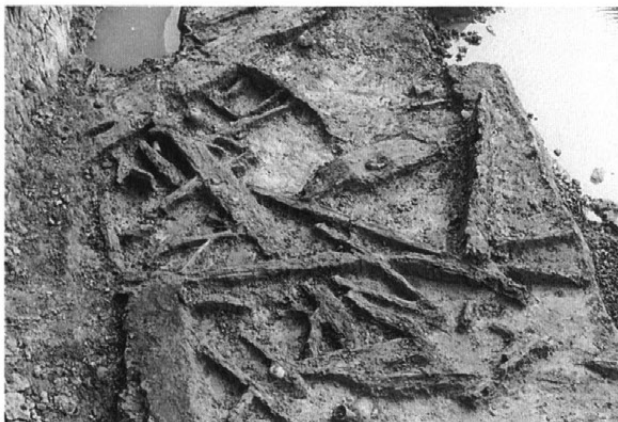
右上 木材出土状況
右中 完掘状況
右下 木材出土状況



SD1016-11
(⑩-1区)



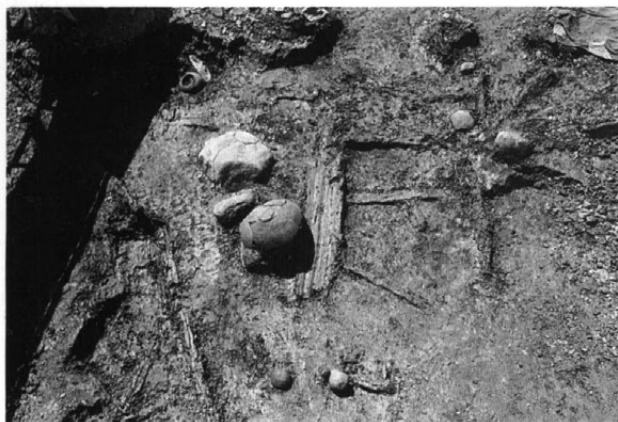
左 木材出土状況
右 同上



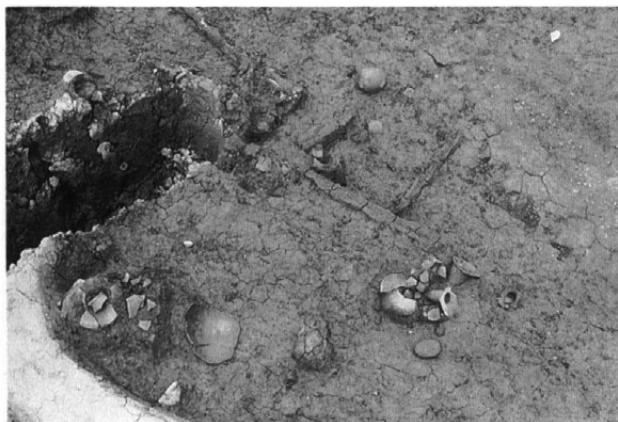
左 木材出土状況
右 同上



左 木材出土状況
右 同上



左 木材出土状況
右 土器出土状況



左 土器出土状況
右 同上

SD1016-12
(⑩-1区)

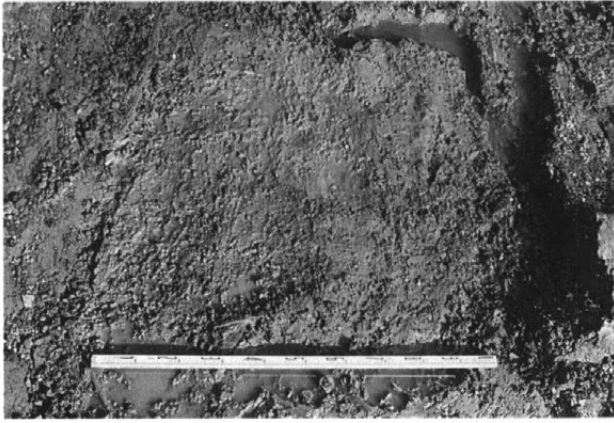
左 土器出土狀況
右 同上



左 木材・土器出土狀況
右 籠出土狀況



左 籠? 出土狀況
右 石釧出土狀況



左 杭断面
右 同上



左 杭断面
右 杭断面

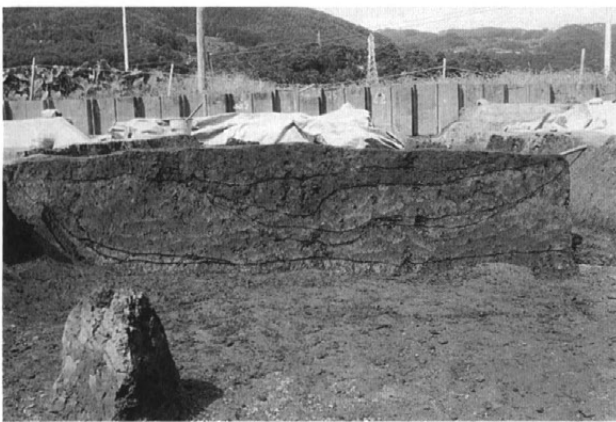




⑤-1区
 左 SD1007
 遺物出土状況
 右 SD1007
 完掘



左上 ⑤-1区
 SD1007
 遺物出土状況
 左下 SD1007 土層
 右 ⑦-2区
 SD1007



左 SX1001
 右 SX1001
 遺物出土状況

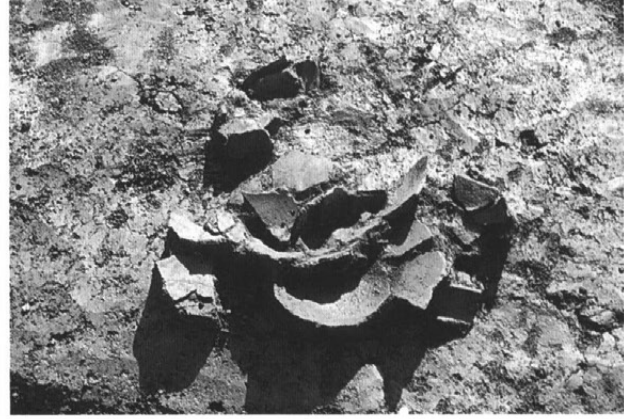
左 S Q2003
右 S Q2006



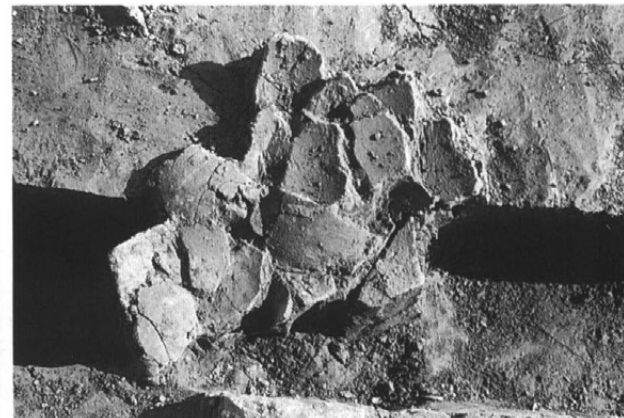
左 S Q2007
右 S Q2008



左 S Q2012
右上 S Q2009
右下 S Q2013



左 S Q2014
右 S Q2015



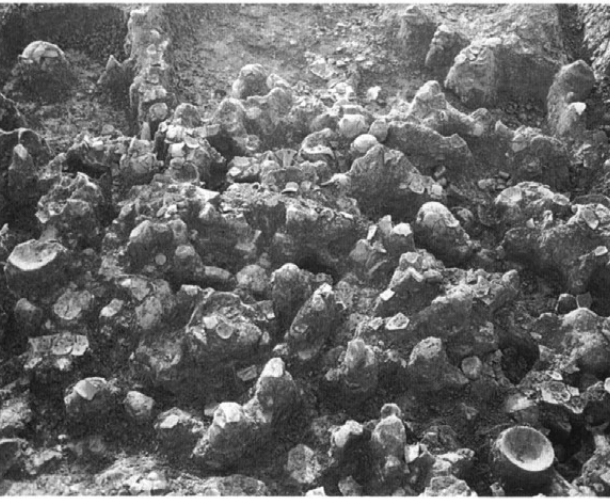
SQ2016-1
(⑤-1区)



⑤-1
SQ2016全景



左 遺物出土状況
右 遺物出土状況



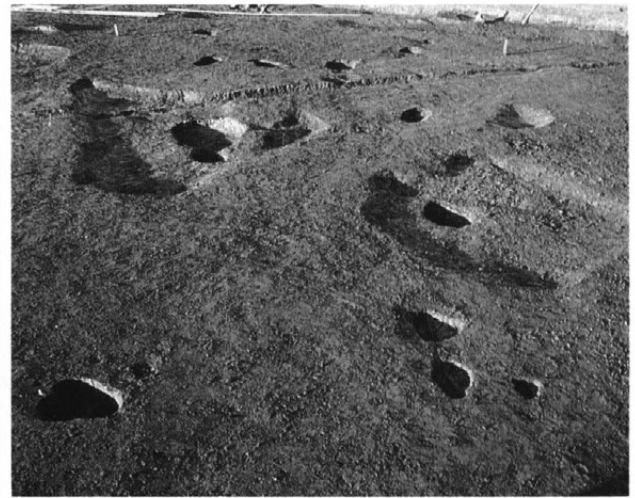
左 遺物出土状況
右 土層

SQ2016-2
(⑤-2、⑩-1区)

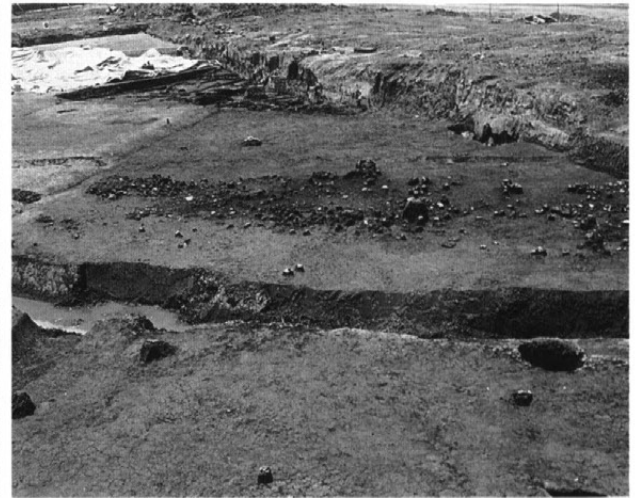


⑤-2区
SQ2016 完掘状況

左 P₁完掘状況
右 P₄・P₅完掘状況

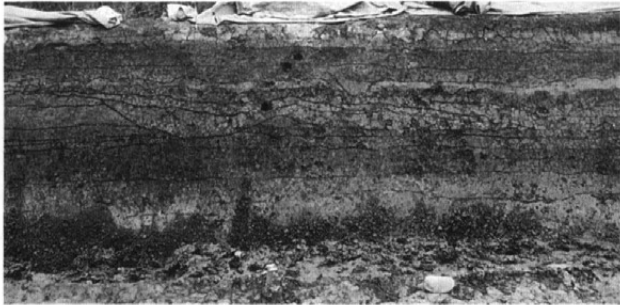


左 ⑩-1区
土器出土状況
右 同上



左 ⑩-1区
土器出土状況
右 同上





⑦-1区
西側低地境
西縁辺部

左 微高地西側低地境
(西より)
右 同上⑦-1区
(北より)



左 低地境の土層
(南壁)
右 低地境南部



左 SQ1005
土器出土状況
右 同上



左 SQ1005
土器出土状況
右 同上



左 低地境北部
右 SQ1005
土器出土状況

⑦-1、⑦-2区
西側低地境
西南縁辺部



⑦-1区
左 西南縁辺部
右 SQ1004遺物出土
状況



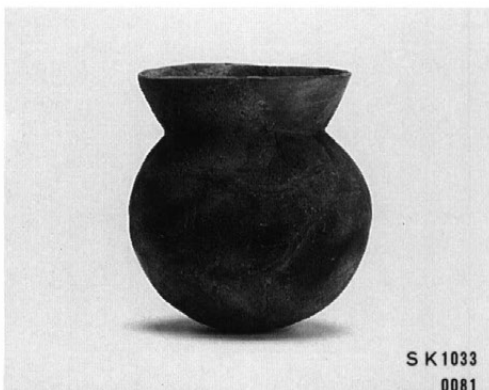
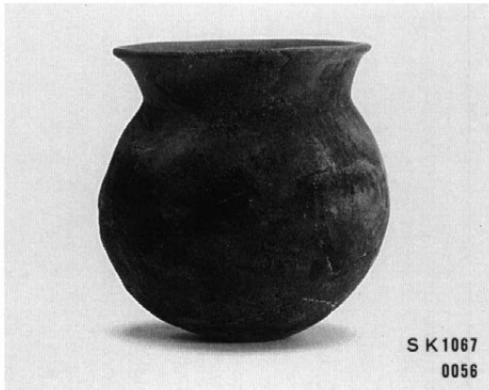
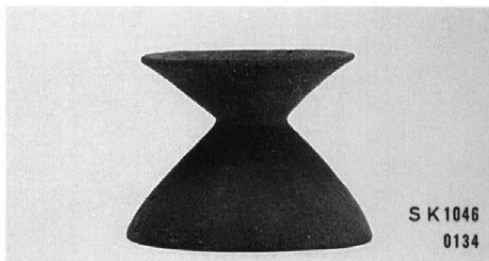
⑦-2区
西側低地境
西南縁辺部

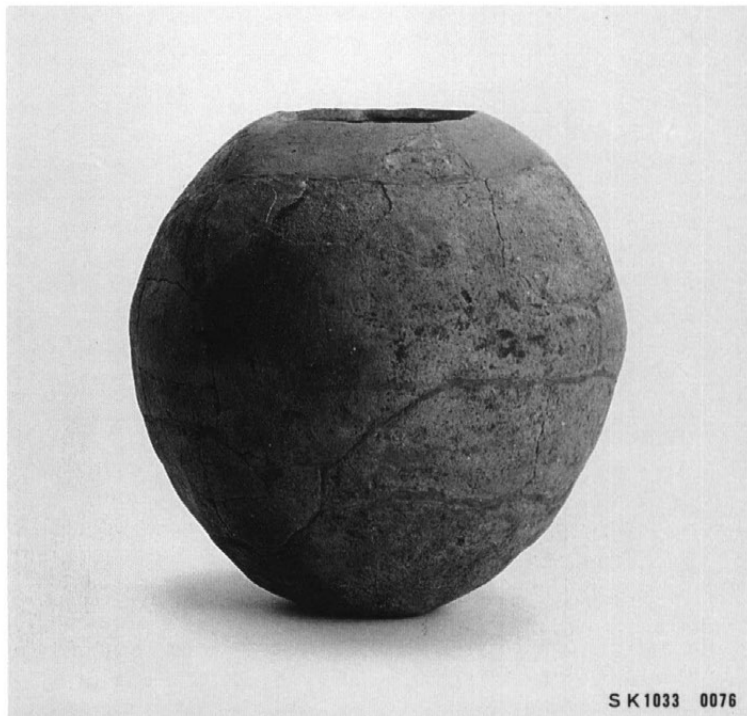
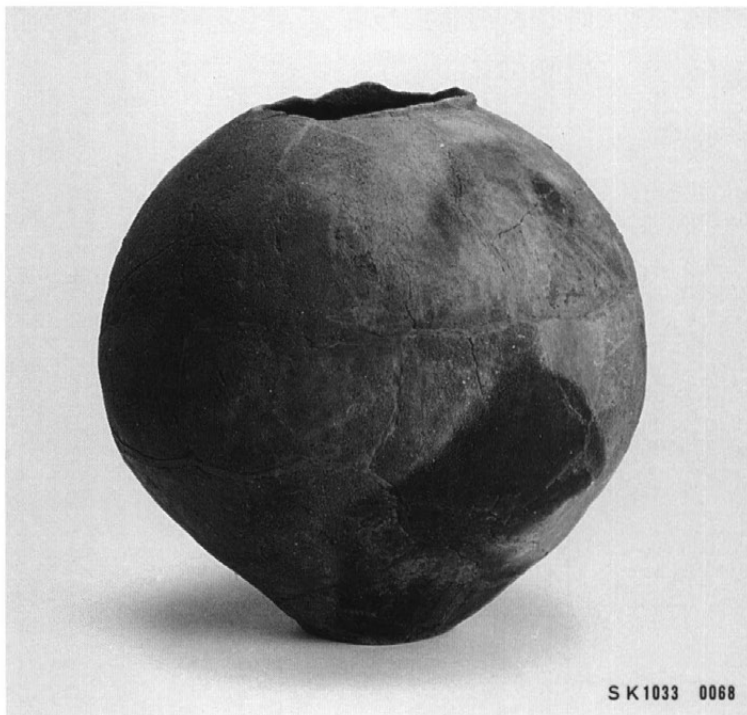
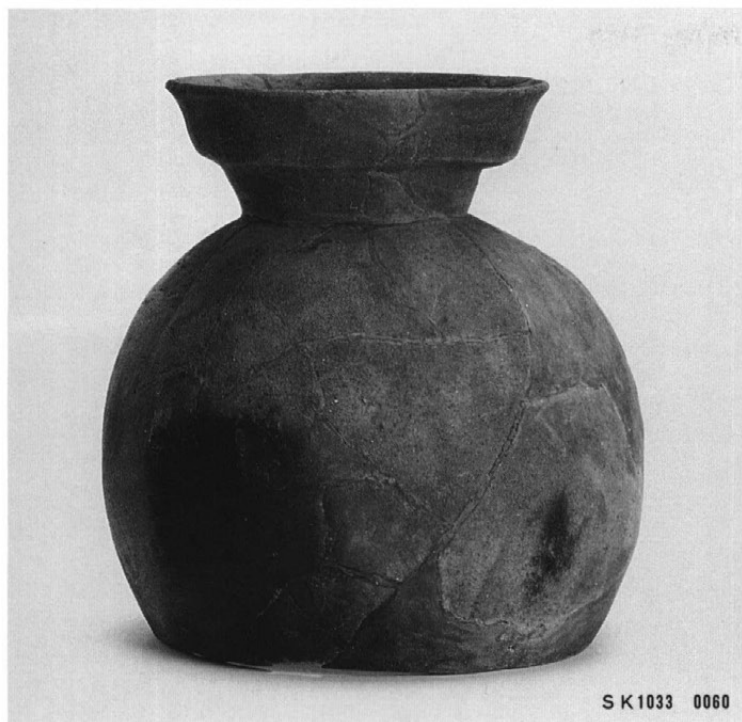
SQ1004
左 遺物出土状況
右 同上

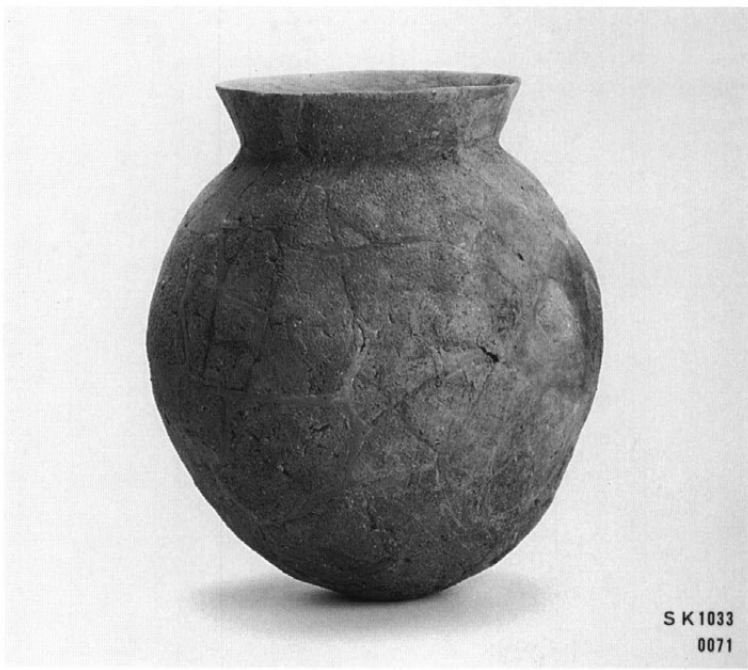
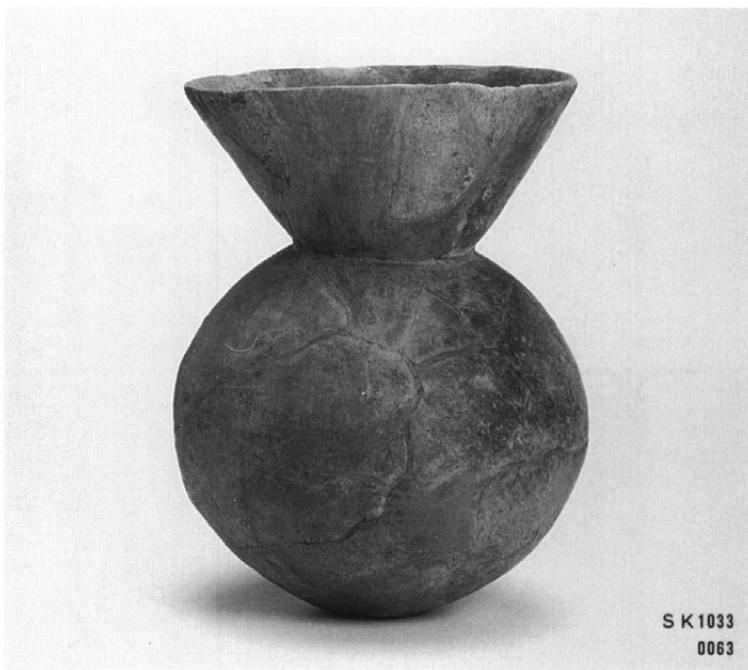


SQ1004
左 遺物出土状況
右 石釧出土状況











S K2003 0157



S K2016 0217



S K2013 0162



S K2016 0218



S K2025 0195



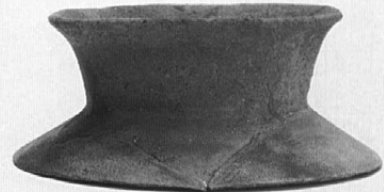
S K2005 0189



S K2005 0181



S K2005 0175



S K2005 0173



S K2005 0178



S K2017 0453



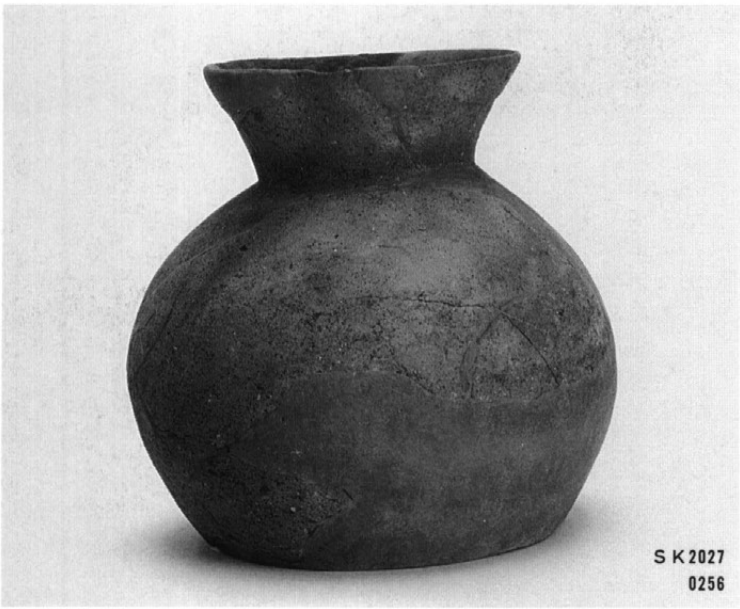
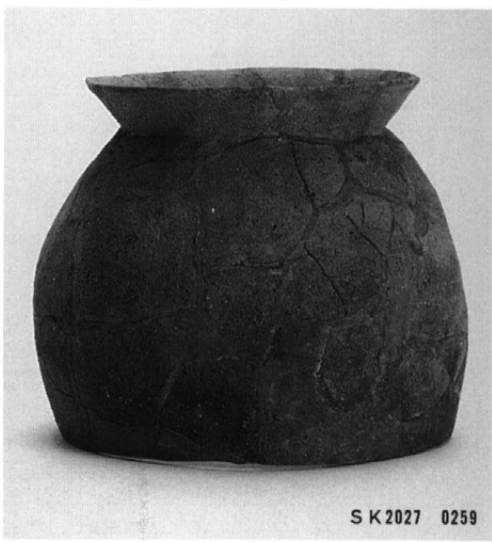
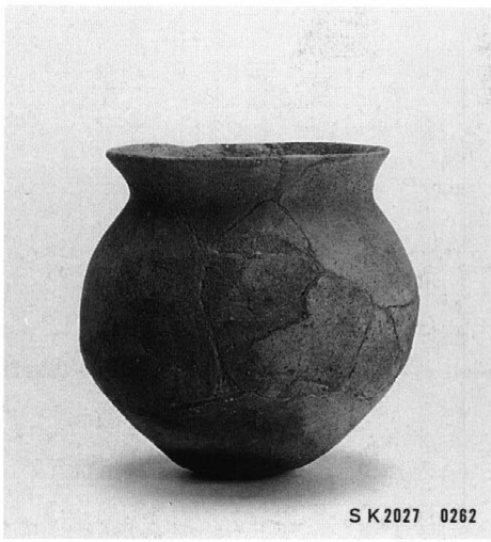
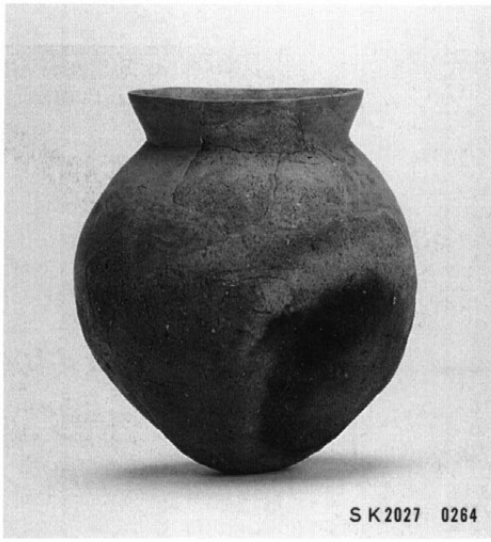
S K2027 0266

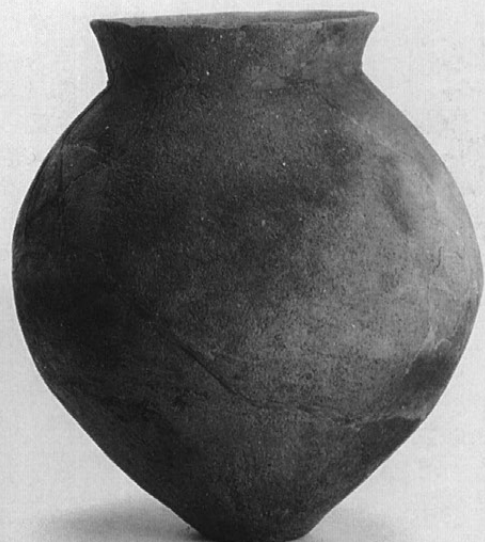


S K2027 0267



S K2027 0263





S K 2047 0280



S K 2047 0289



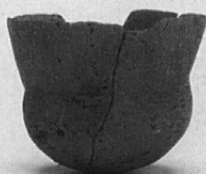
S K 2047 0281



S K 2047 0282



S K 2047 0283



S K 2057 0380



S K 2054 0294



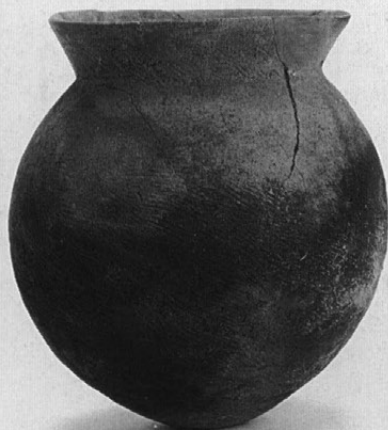
S K 2057 0342



S K 2054 0296



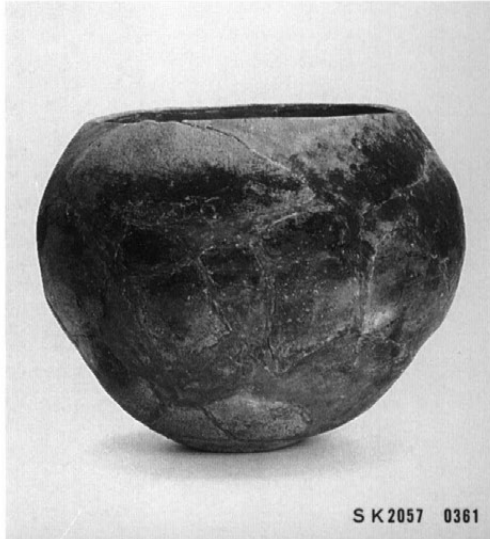
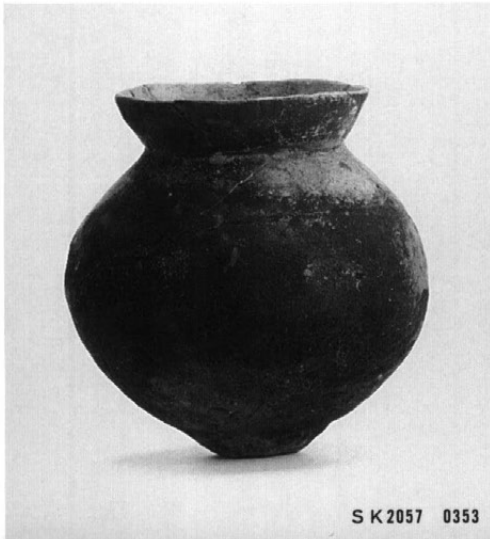
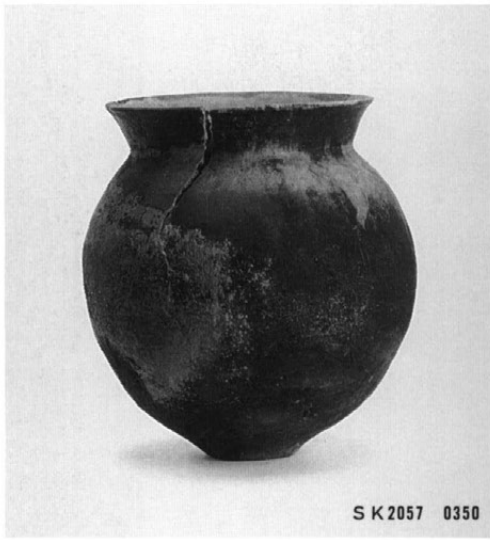
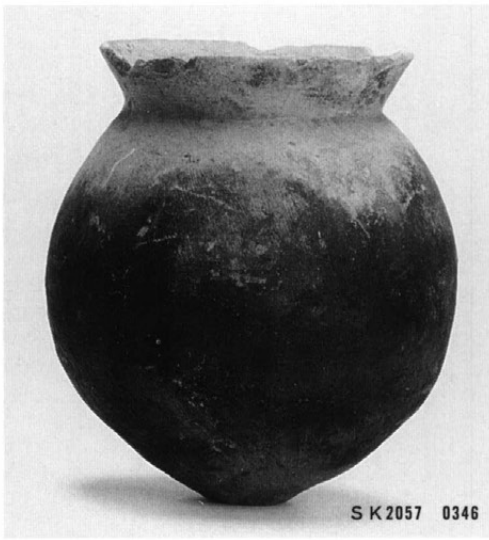
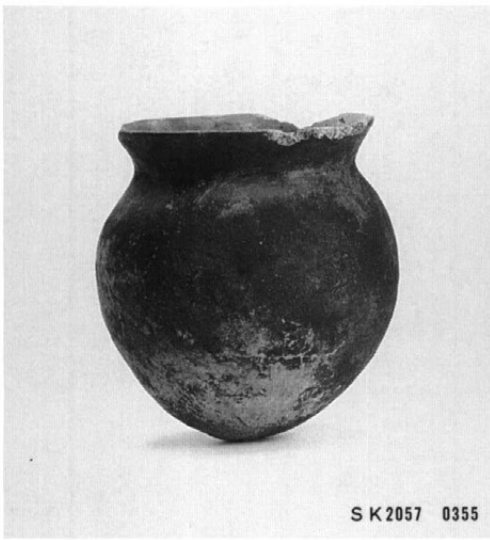
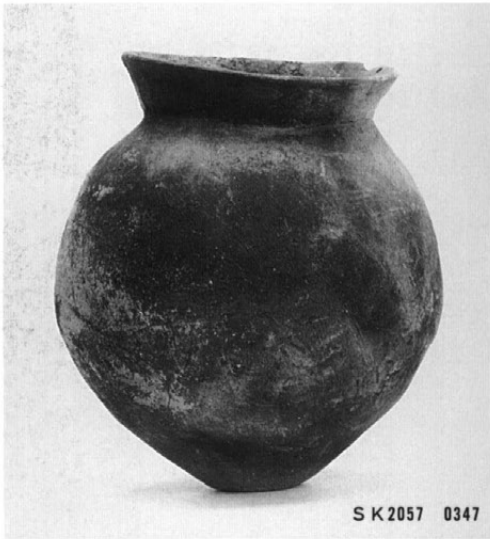
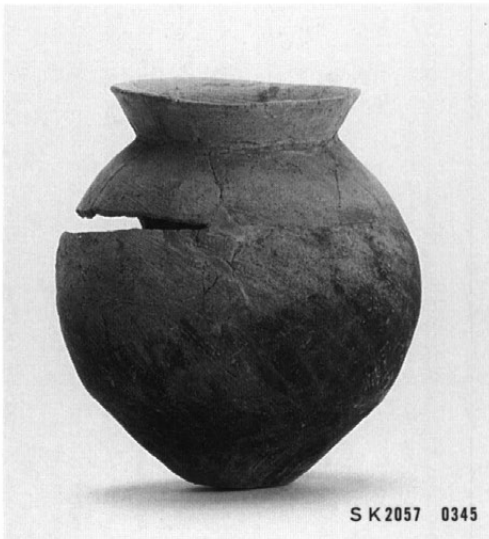
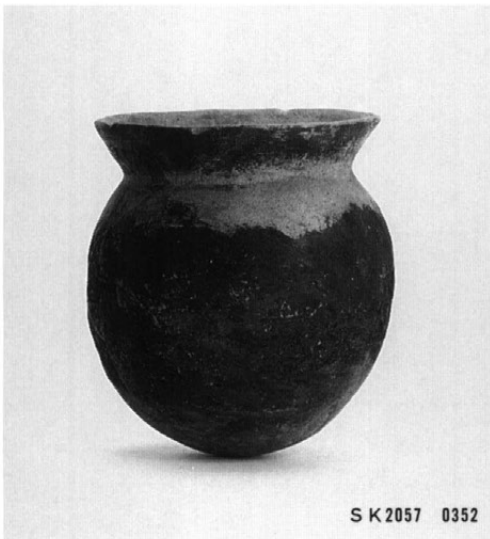
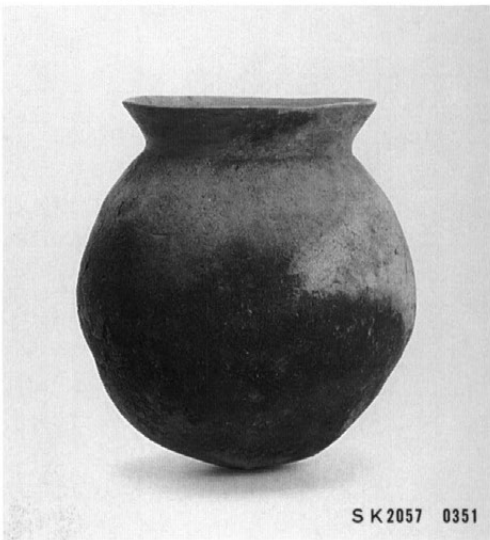
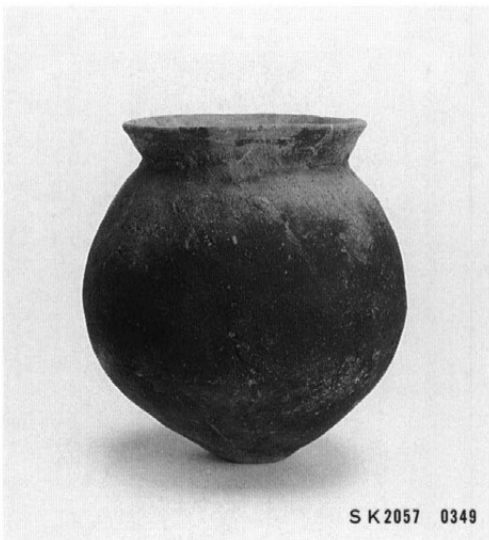
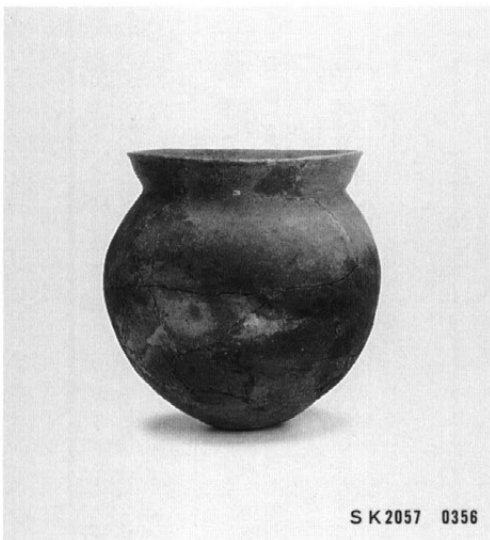
S K 2057 0343

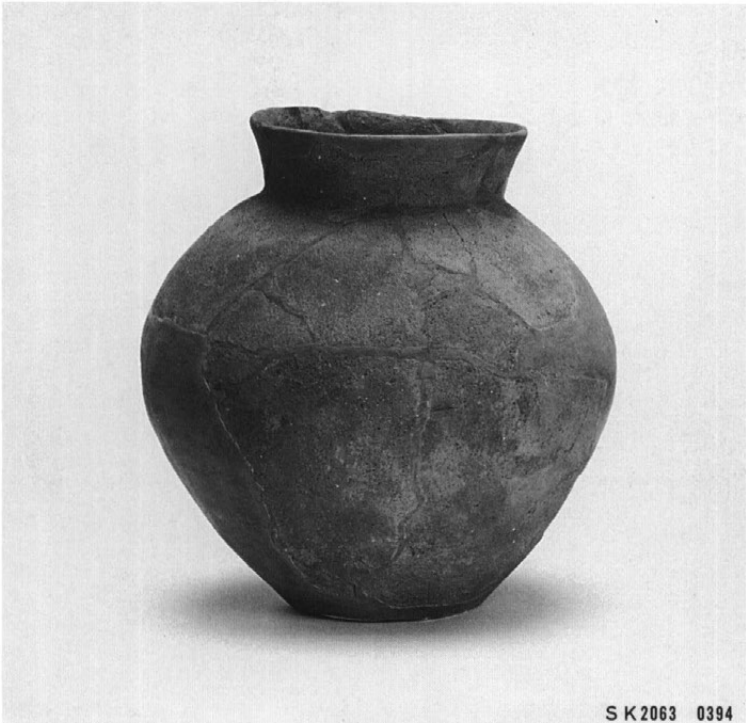
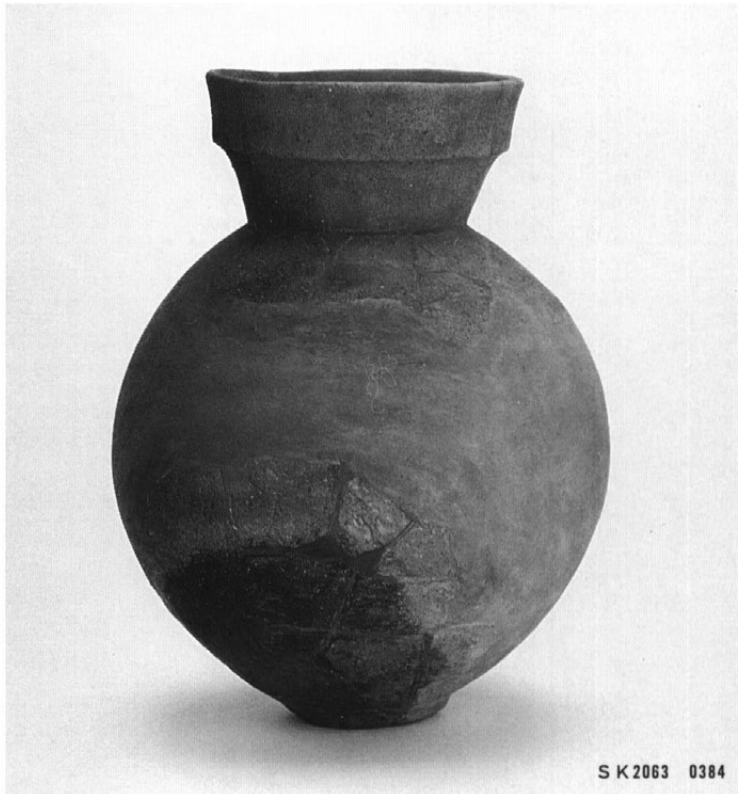


S K 2057 0344



S K 2057 0348







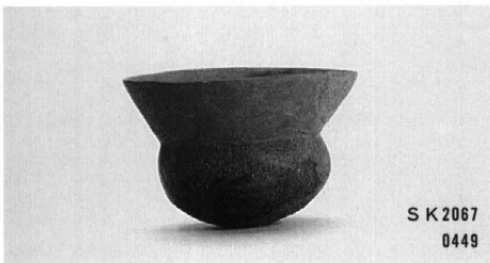
S K2067
0450



S K2067 0436



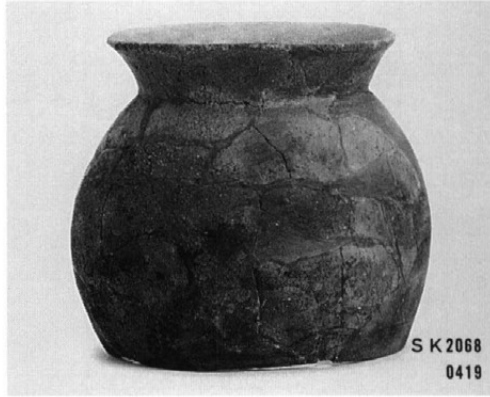
S K2067 0430



S K2067
0449



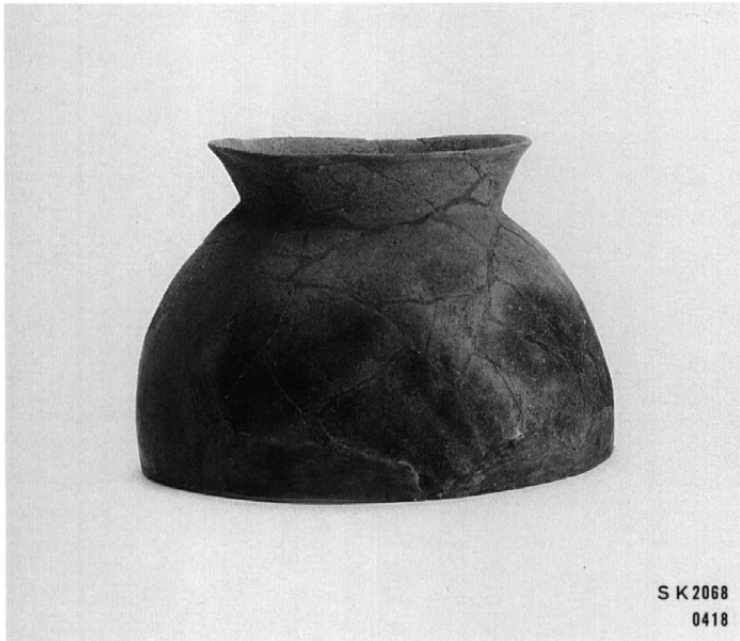
S K2067 0435



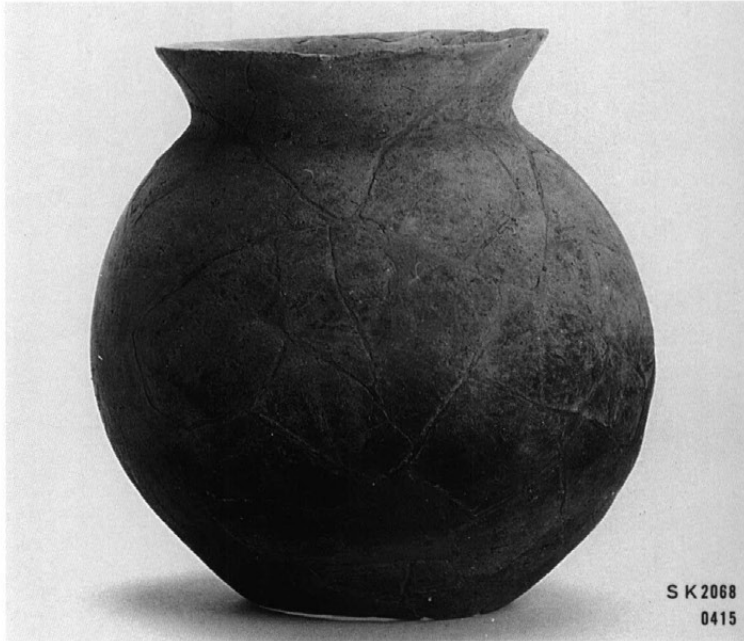
S K2068
0419



S K2067
0452



S K2068
0418



S K2068
0415



S K2086 0519



S K2086 0509



S K2086 0522



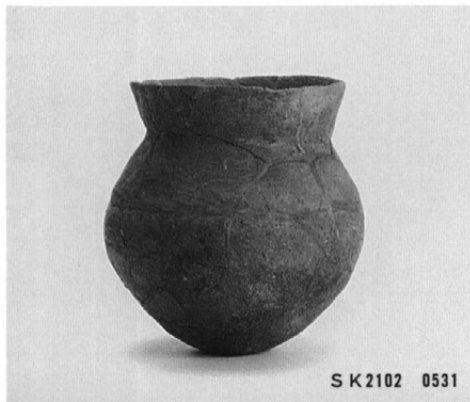
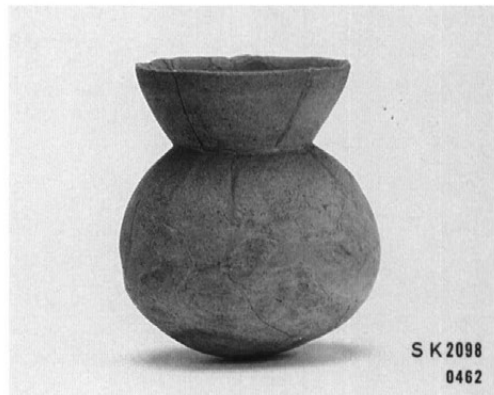
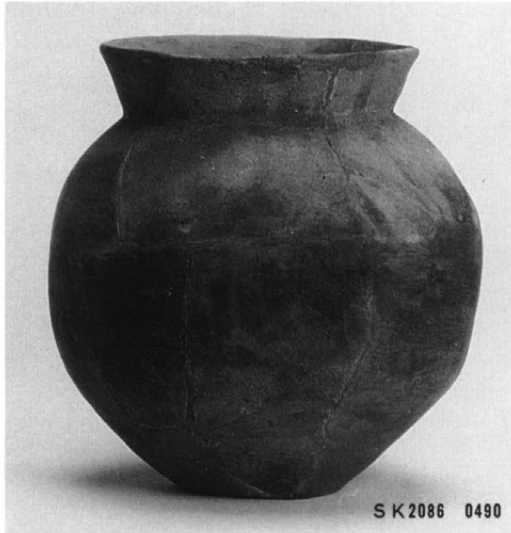
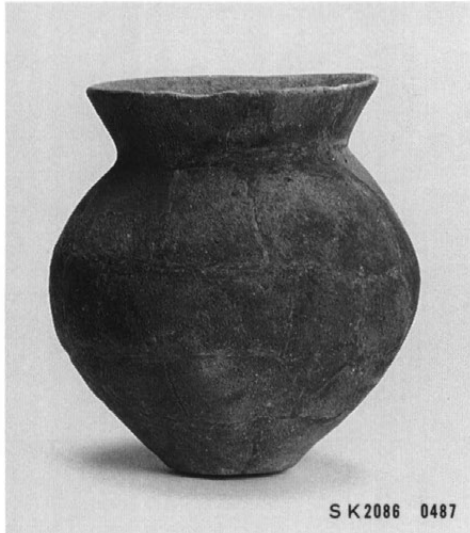
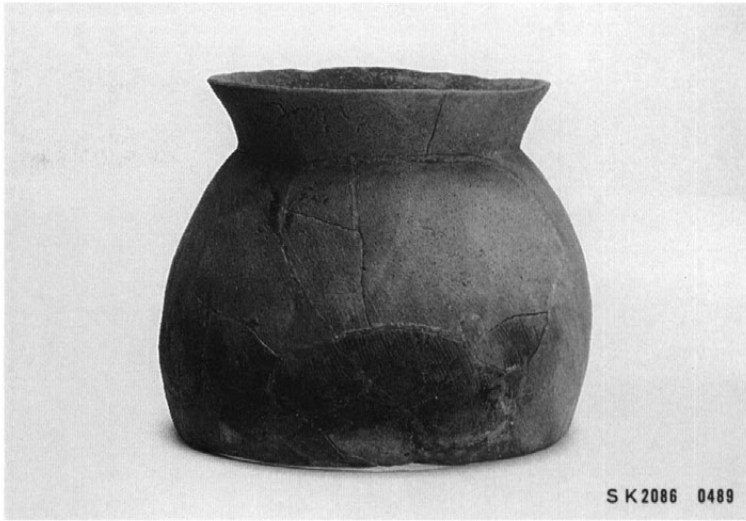
S K2086 0505



S K2086
0499



S K2086 0521





S K 2102 0535



S K 2120 0615



S K 2112 0582



S K 2129 0634



S K 2146 0641



S K 2147 0690



S K 2108 0552



S K 2147 0693



S K 2147 0673



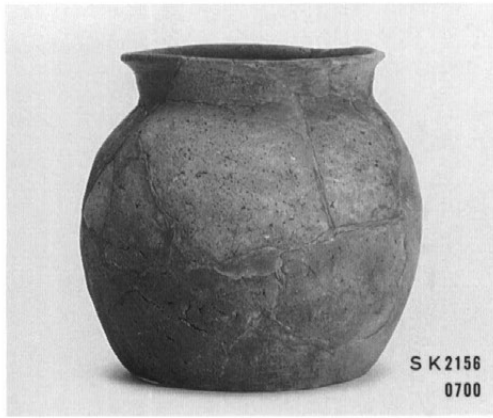
S K2156
0714



S K2156
0712



S K2156 0703



S K2156
0700



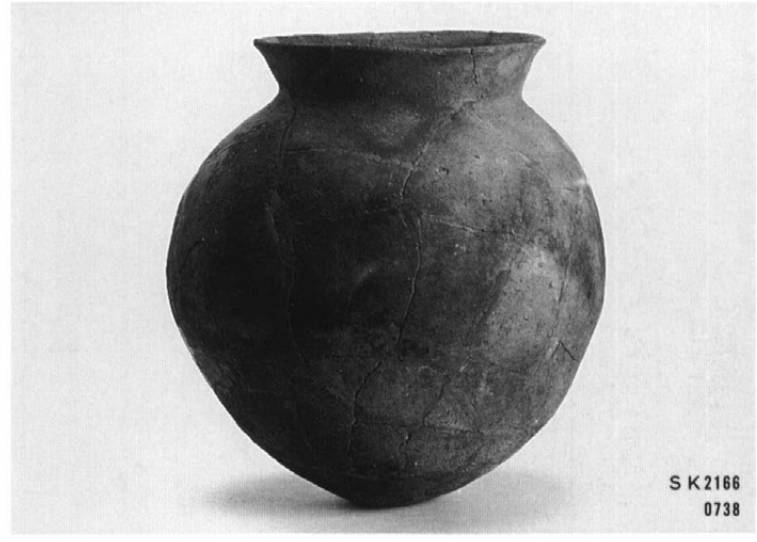
S K2156 0697



S K2156
0696



S K2160
0663



S K2166
0738



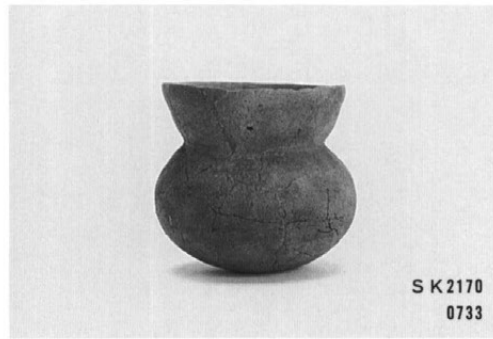
S K2164
0731



S K2164 0730



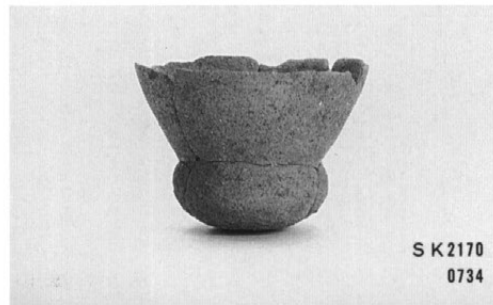
S K2171 0756



S K2170
0733



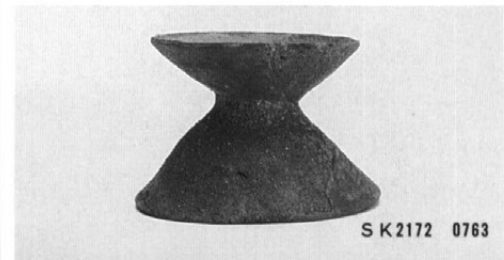
S K2171 0747



S K2170
0734

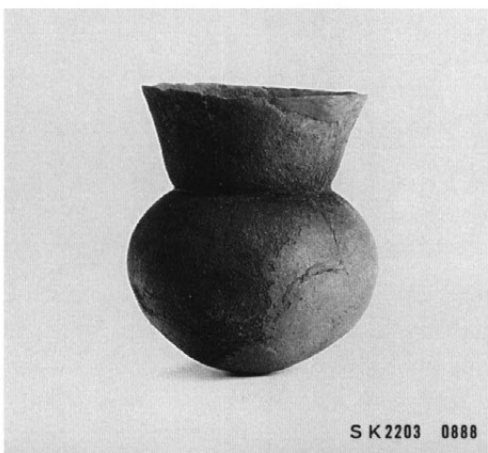
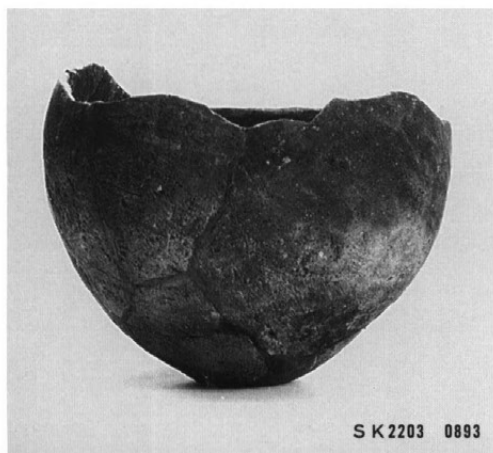
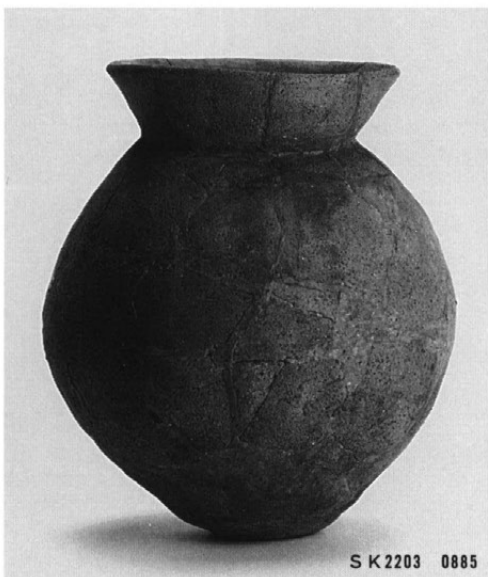
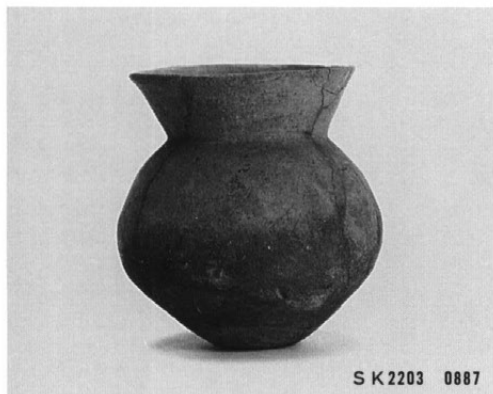
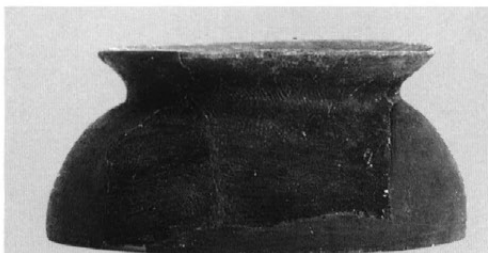
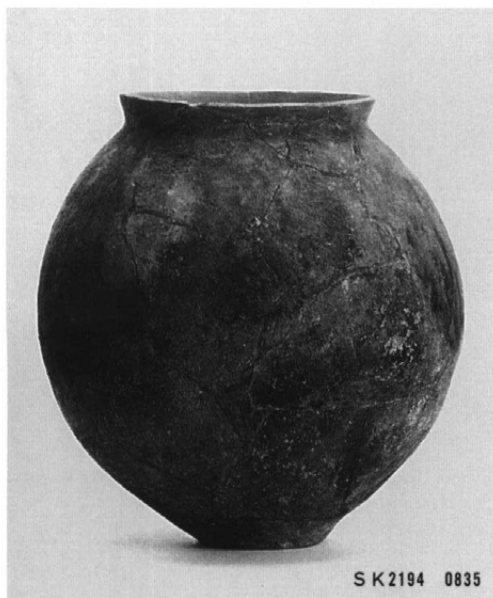


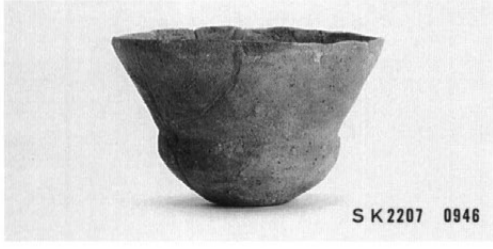
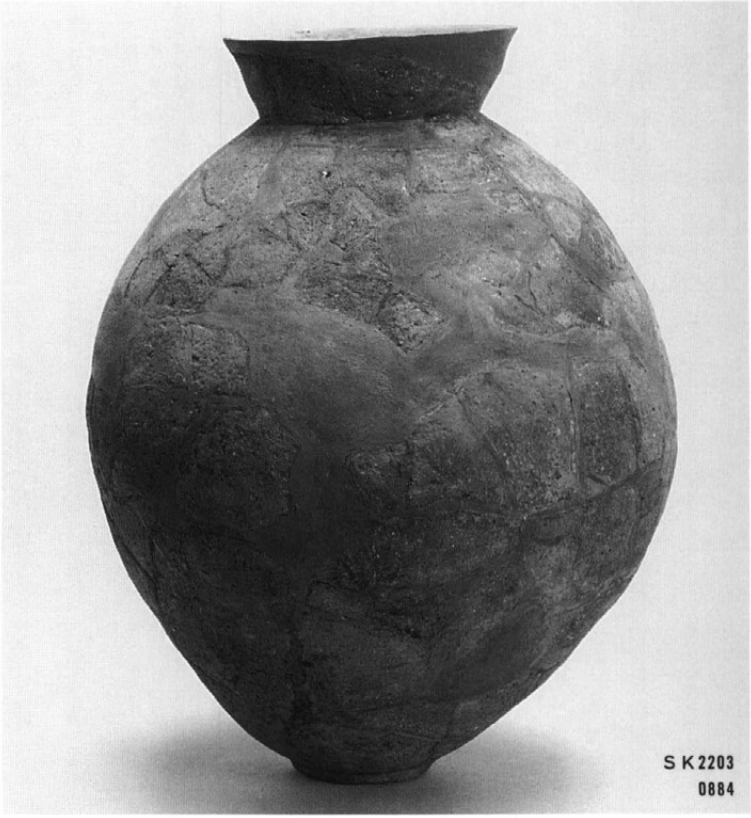
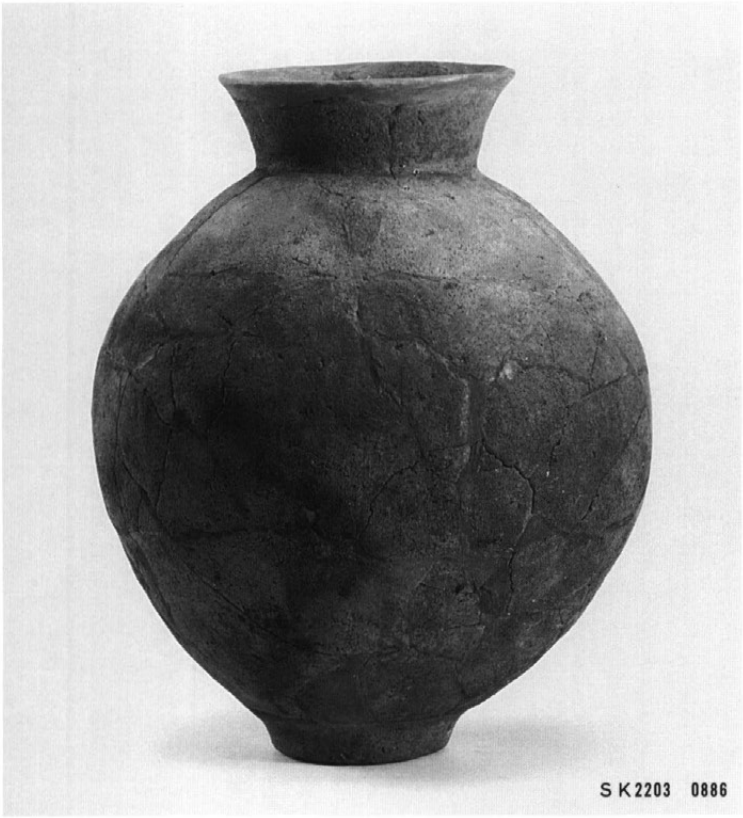
S K2170 0732



S K2172 0763









S K2207 0916



S K2207 0906



S K2207 0917



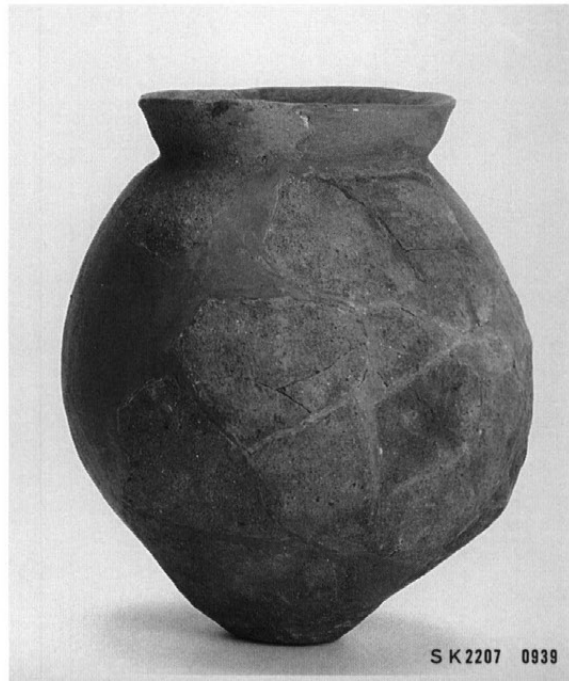
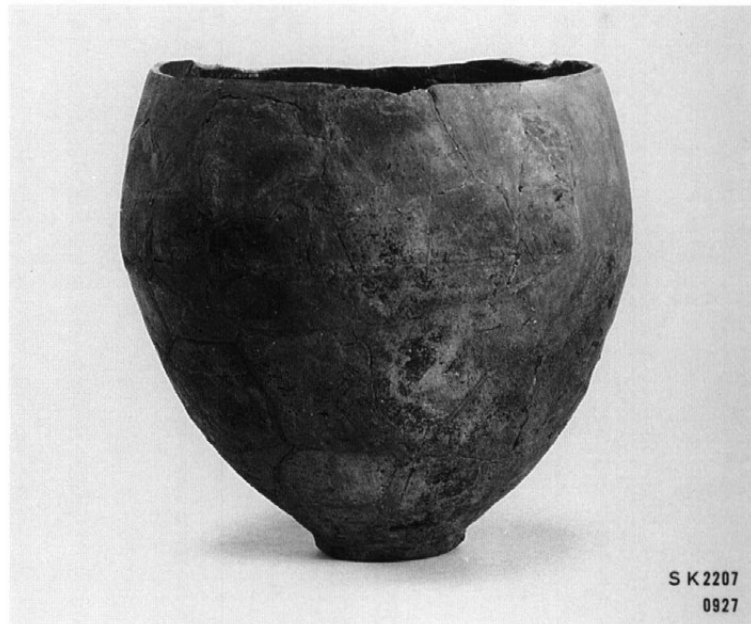
S K2207 0921



S K2207 0924



S K2207 0926





S K2208 0986



S K2208 0984



S K2208 0999



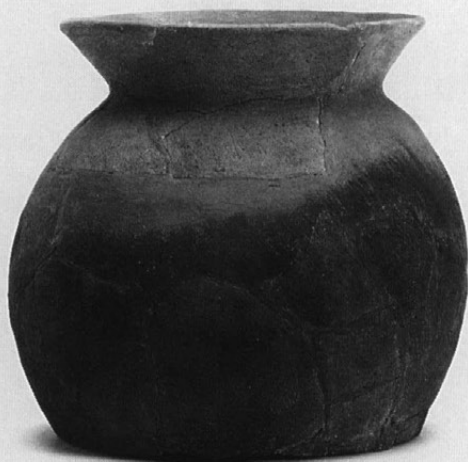
S K2208 0948



S K2208 0949



S K2208 0966



S K2208 0967



S K2210 0959



S K2208 0970



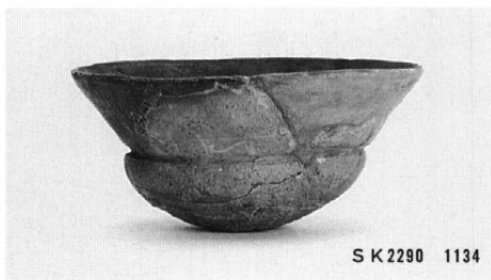
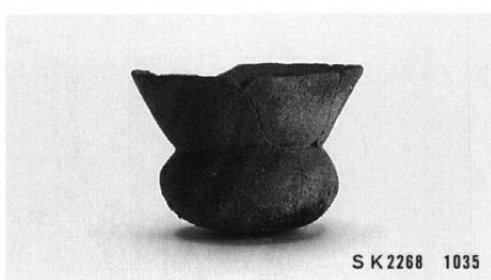
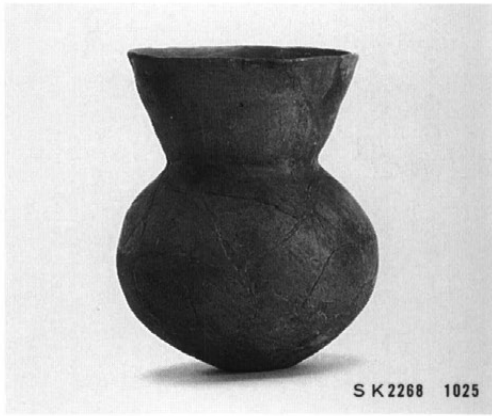
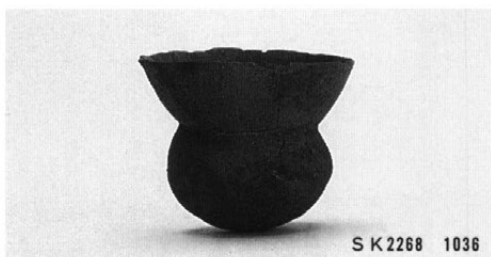
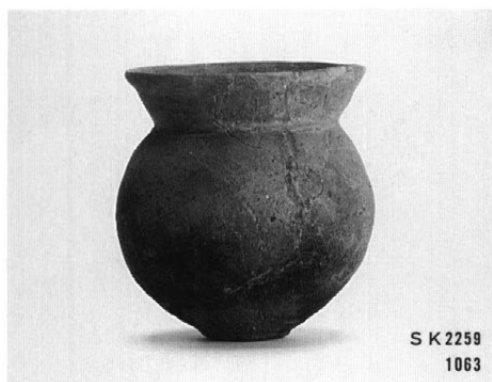
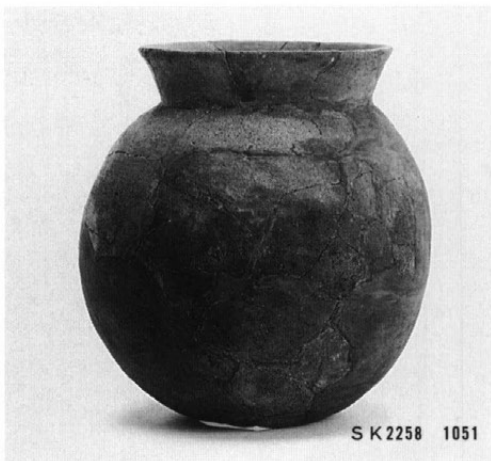
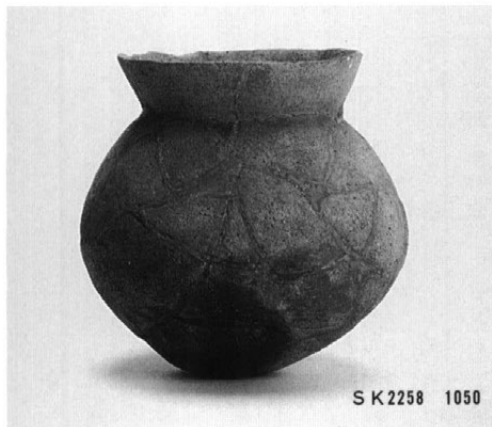
S K2208 0968



S K2210 1011



S K2210 1012





S K 2297 1115



S K 2297 1114



S K 2297 1108



S K 2297 1086

(1/6)



S K 2297 1087



S K 2297 1093



S K 2299 1144



S K 2299 1146



S K 2299 1147



S K 2299 1148



S K 2302 1083



S K 2302 1084



S K 2312 1162



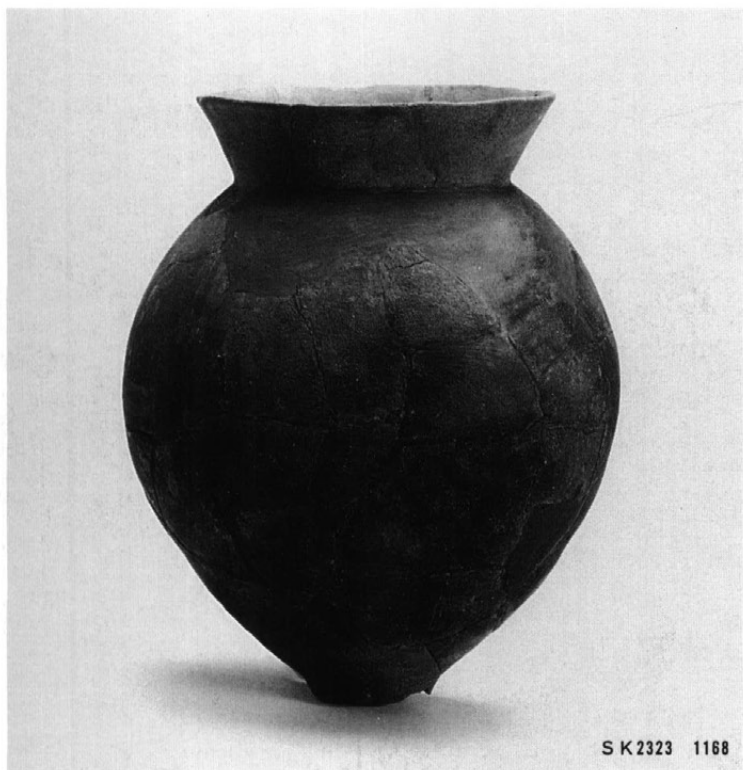
S K 2325 1173



S K 2323 1169



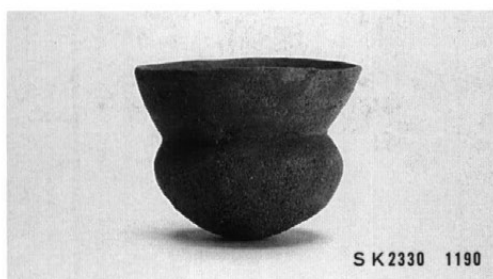
S K 2323 1170



S K 2323 1168



S K 2346 1207



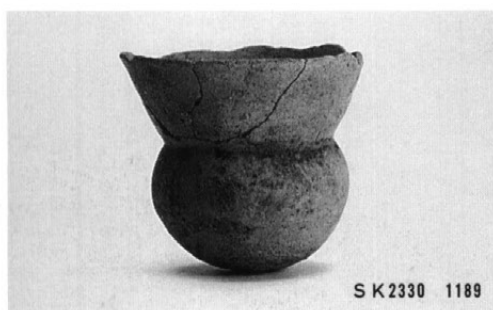
S K 2330 1190



S K 2330 1176



S K 2330 1178



S K 2330 1189



S K 2330 1179



S K 2330 1177



S K 2333 1199



S K 2339 1200



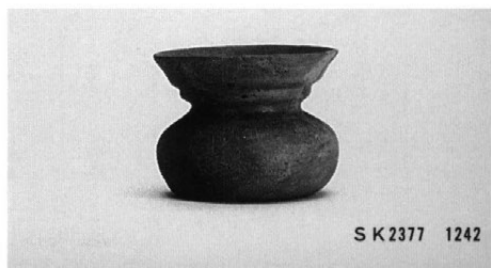
S K 2378 1252



S K 2406 1305 (2368)



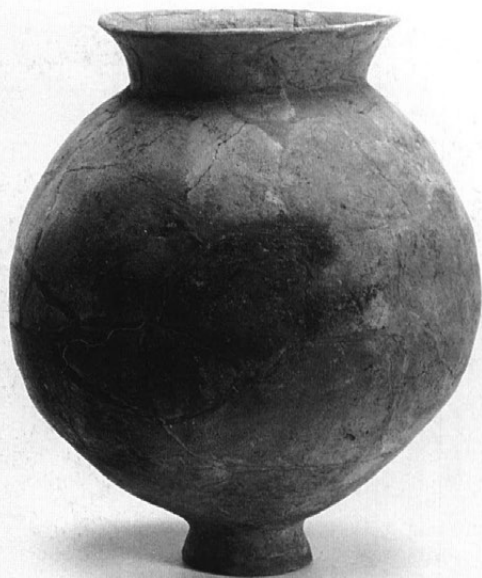
S K 2377 1241



S K 2377 1242



S K 2361 1218



S K 2361 1219



S K 2361 1225



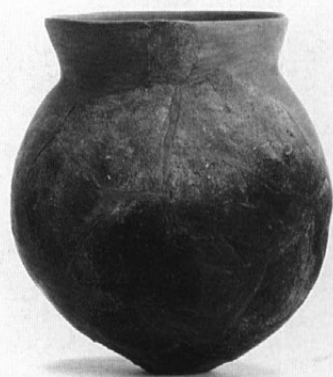
S K 2363 1232



S K 2363 1233



S K 2403 1278



S K 2403 1277



S K 2403 1295



S K 2406 1317



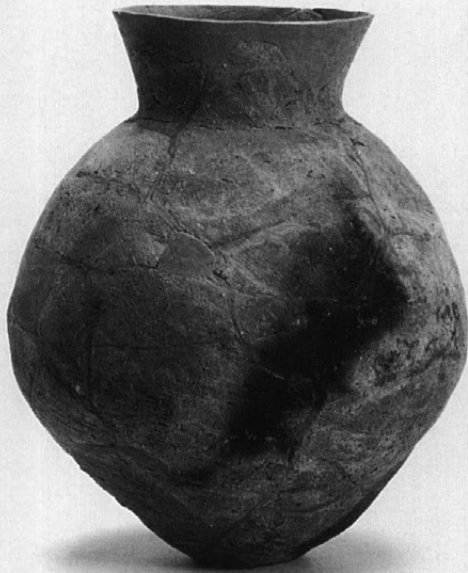
S K 2406 1301



S K 2406 1307



S K 2406 1318



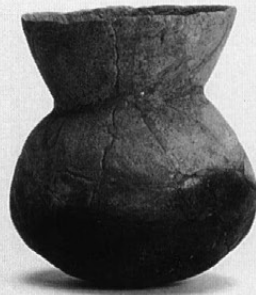
S K 2410 1321



S K 2413 1362



S K 2410 1324



S K 2410 1322



S K 2413 1331



S K 2432 1362



S K 2432 1361



S K 2444 1365



S K 2444 1364



S K 2445 1383



S K 2473 1407



S K 2478 1431



S K 2478 1428



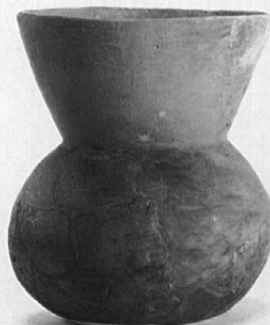
S K 2478 1430



S K 2478 1423



S K 2478 1425



S K 2478 1420



S K 2482 1395



S K 2490 1417



S K 2482 1394



S K 2482 1396



S K 2492 1453



S K 2492 1448



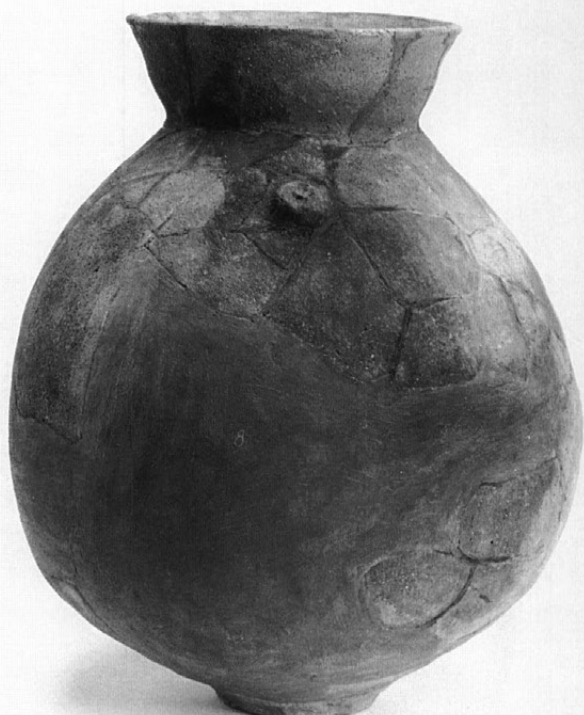
S K 2492 1441



S K 2492 1452



S K2492 1439



S K2492 1438



S K2492 1435



S K2492 1434



S K2492 1443



S K2492 1440



S K 2571
1467



S K 2561 1465



S K 2561
1464



S K 2608 1514



S K 2608 1515



S K 2648 1511



S K 2648
1499



S K 2648 1496



S K 2648 1484



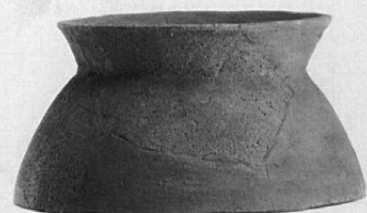
S K 2648 1488



S K 2648 1497



S K 2648 1498



S K 2648 1503



S K 2744 1572



S K 2746 1596



S K 2745 1537



S K 2744 1558



S K 2746 1597



S K 2746 1598



S K 2746 1583



S K 2746 1581



S K 2746 1580



S K2748 1630



S K2748 1620



S K2748 1621



S K2748 1628



S K2748 1627



S K2756 1662



S K2751 1634



S K2756 1658



S K2751 1631



S K2751 1635



S K2756 1656



S K2757 1666



S K2757
1676



S K2757 1674



S K2757 1671



S K2757
1672



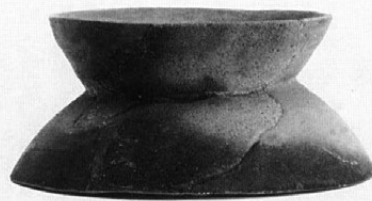
S K2757 1668



S K2757 1670



S K2758 1527



S K2758 1525



S K2759 1695



S K2759 1694



S K2759 1693



S K2758 1528



S K2759 1691



S K2759 1692



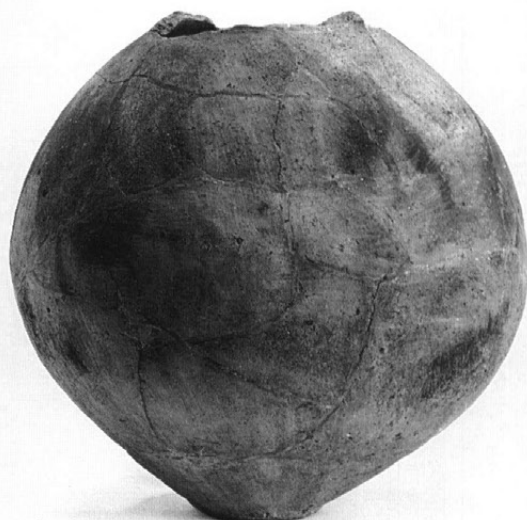
S K2759 1681



S K2759 1677



S K2759 1678



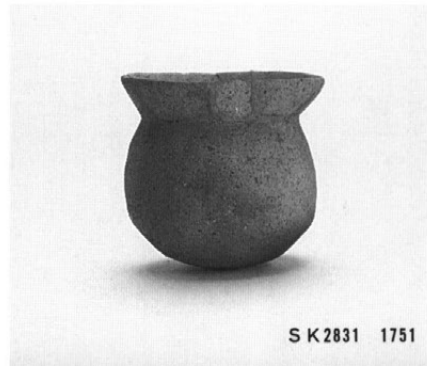
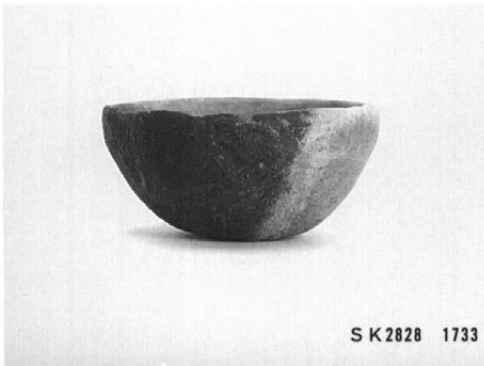
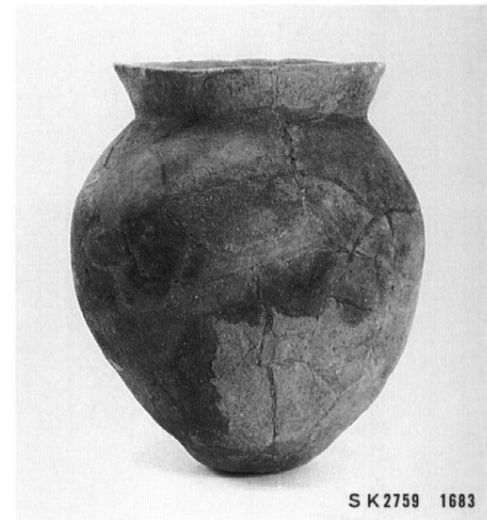
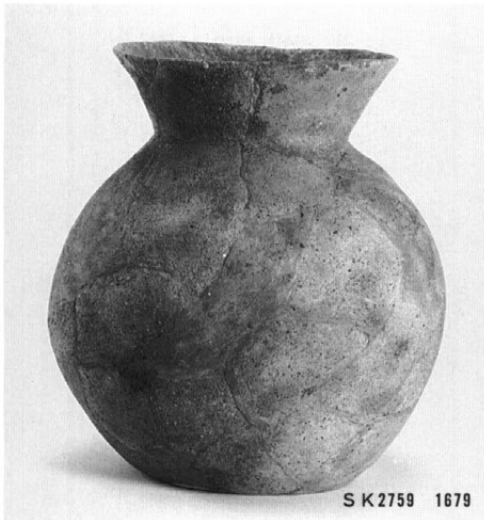
S K2759 1700



S K2759 1680



S K2759 1684

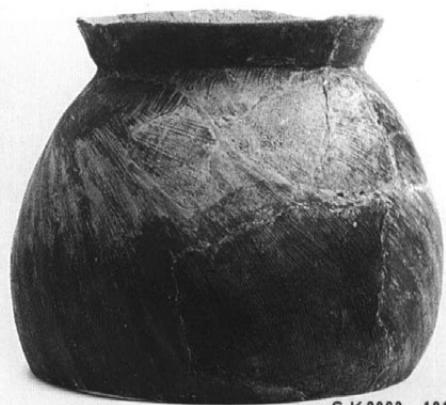




S K2863 1799



S K2863 1798



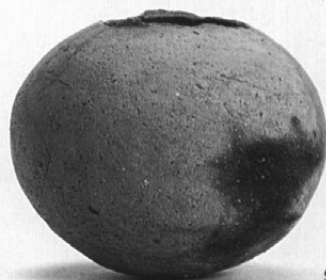
S K2863 1811



S K2865 1829



S K2865 1823



S K2865 1820



S K2868 1766



S K2874 1846



S K2865 1821



S K2879 1833



S K2878 1876



S K2878 1875



2235



3011



2759



0927



1081



1528



2272



1186



0825



1187



0929



1265



2212



1283



