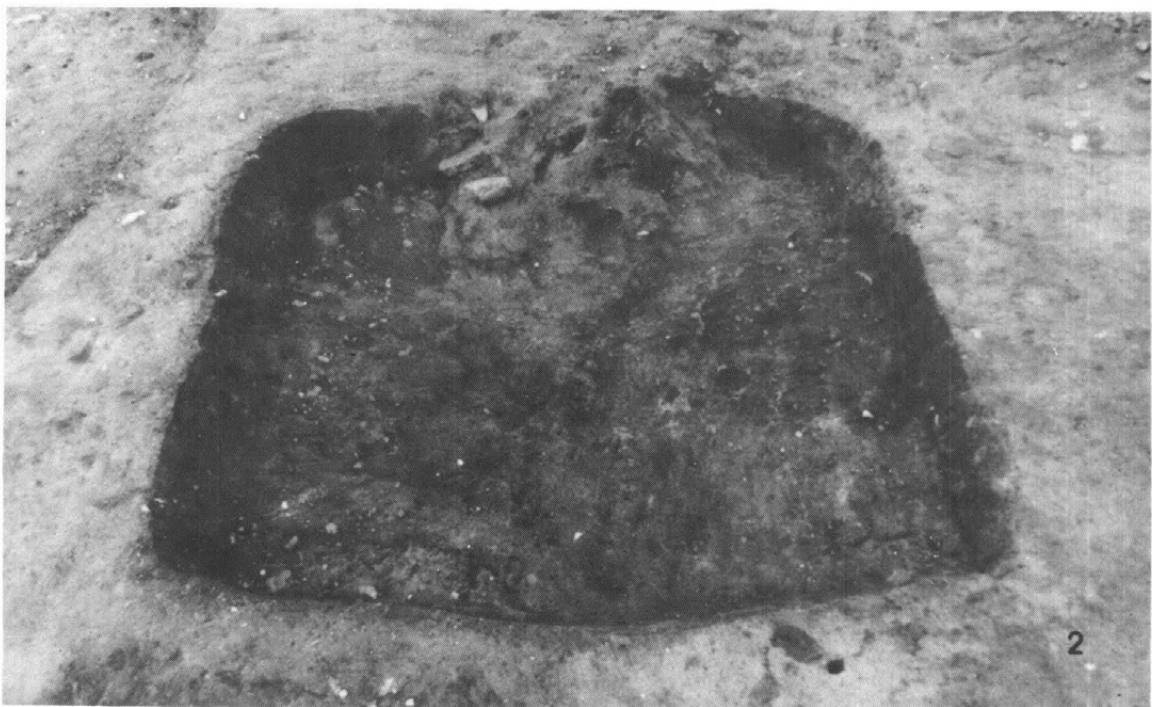


1. 50号住居址
(東方より)



2. 51号住居址
(南方より)

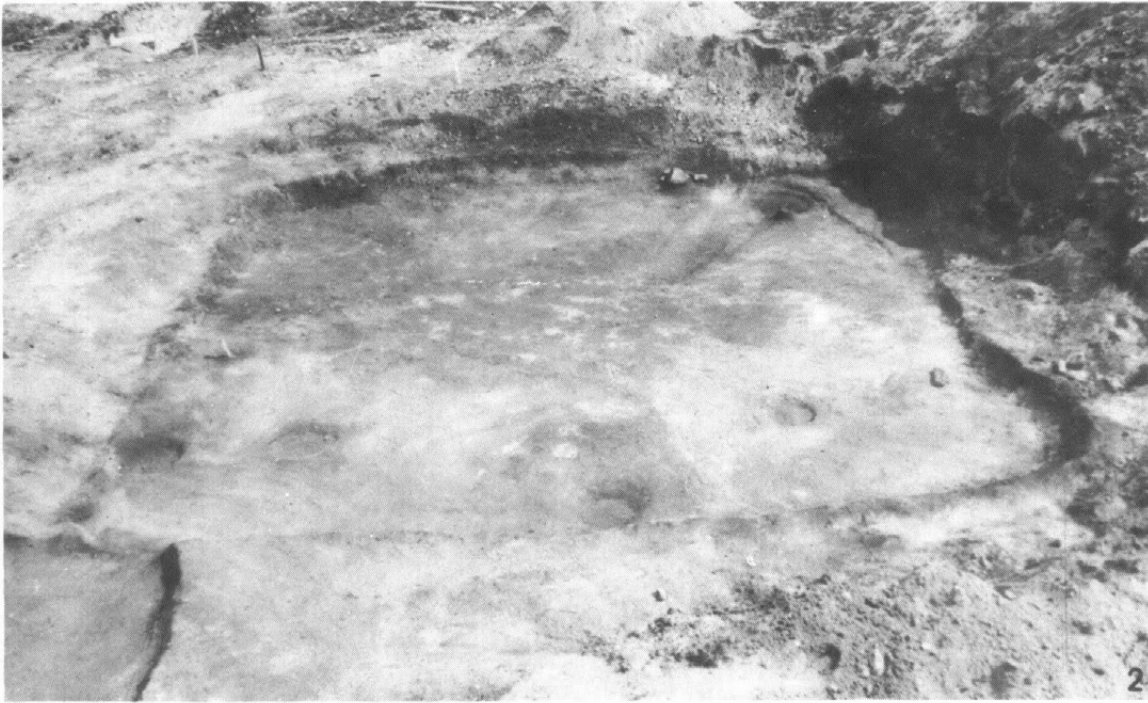


3. 51号住居址
集石状況
(南方より)





1. 52号住居址
(南方より)



2. 53, 56号住居址
(北方より)

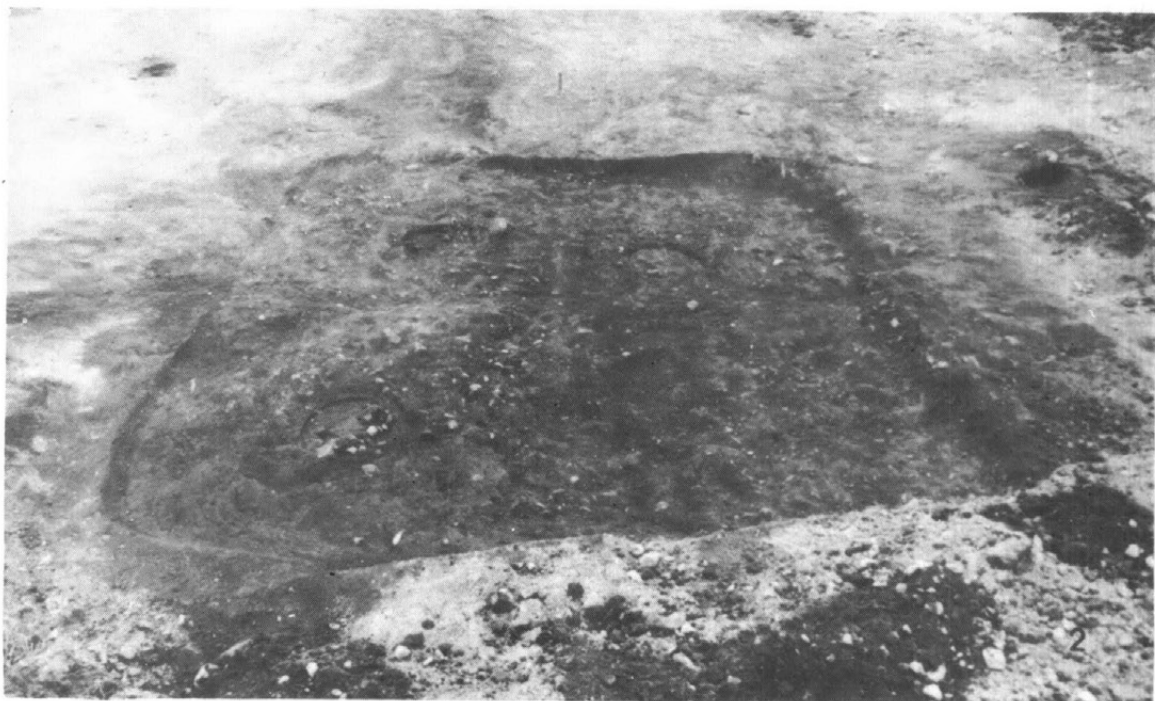


3. 54号住居址
(北方より)

1. 55号住居址
(東方より)



2. 57号住居址
(東方より)



3. 58号住居址
(東方より)





1. 59号住居址
(北方より)



2. 3. 59号住居址
埋糞炉



3

1. 建物址 5
(東方より)



2. 建物址 6
(南方より)



3. 建物址 7
(南方より)





1. 建物址 8
(東方より)



2. 建物址 9
(東方より)



3. 建物址 10
(北方より)

1. 建物址11
(北東方より)

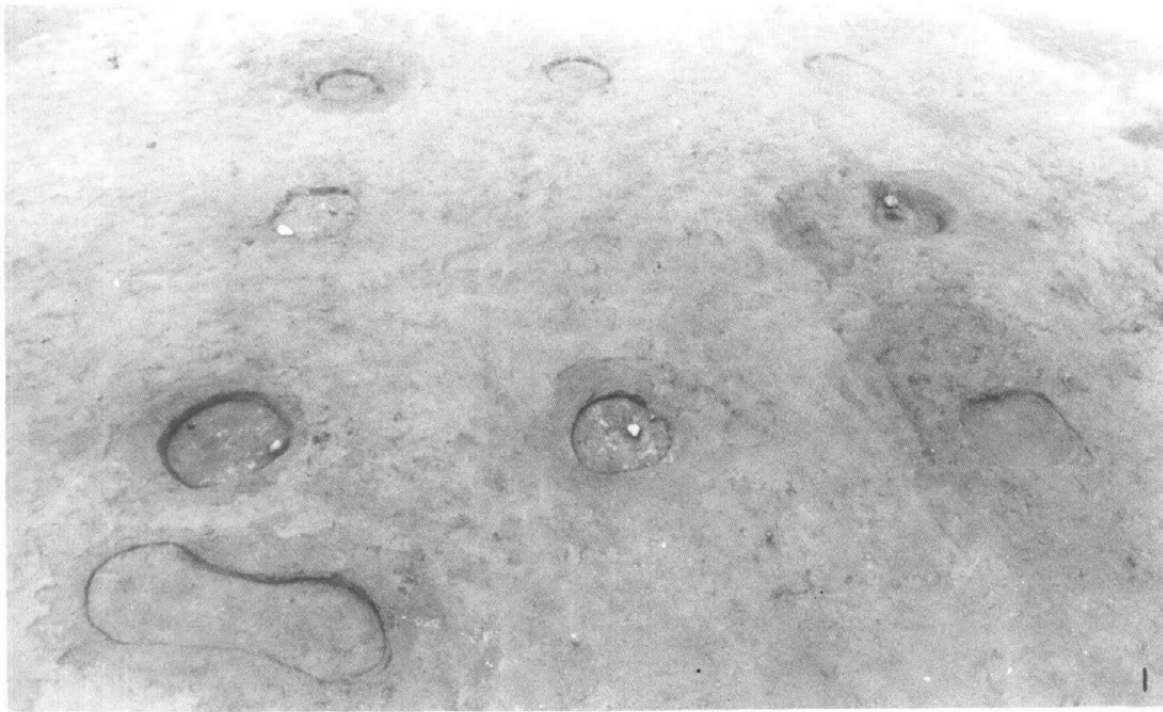


2. 建物址12
(南方より)



3. 建物址13
(南方より)





1. 建物址14
(東方より)



2. 建物址15
(東方より)



3. 建物址16
(東方より)

1. 建物址17
(南方より)



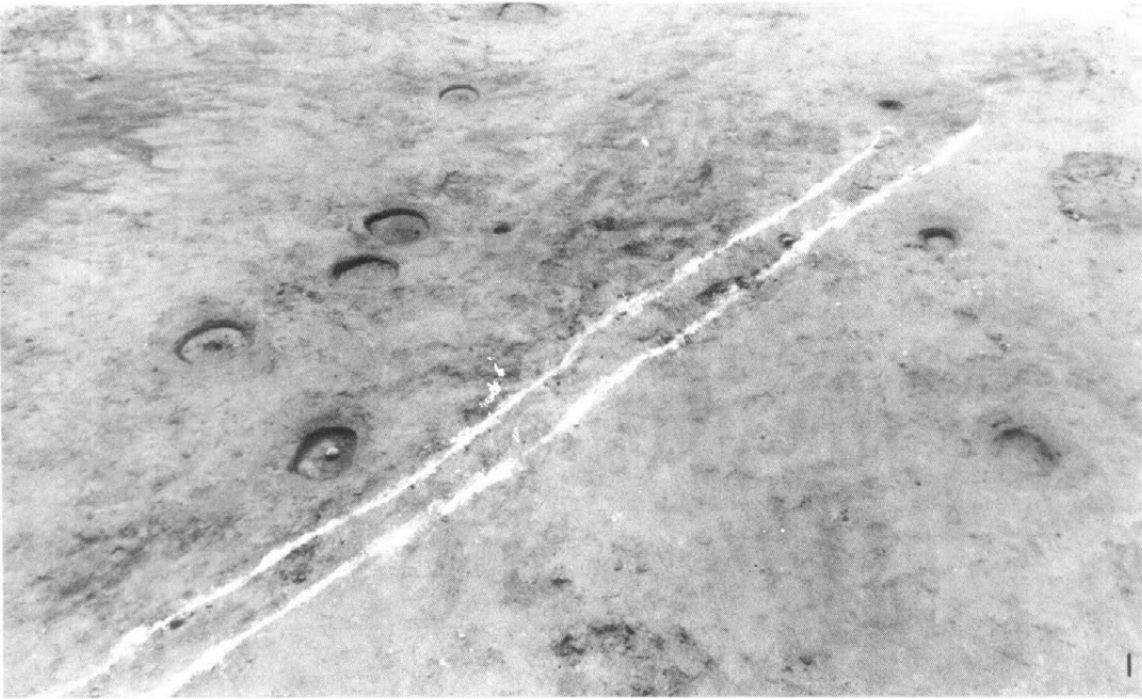
2. 建物址18
(東方より)



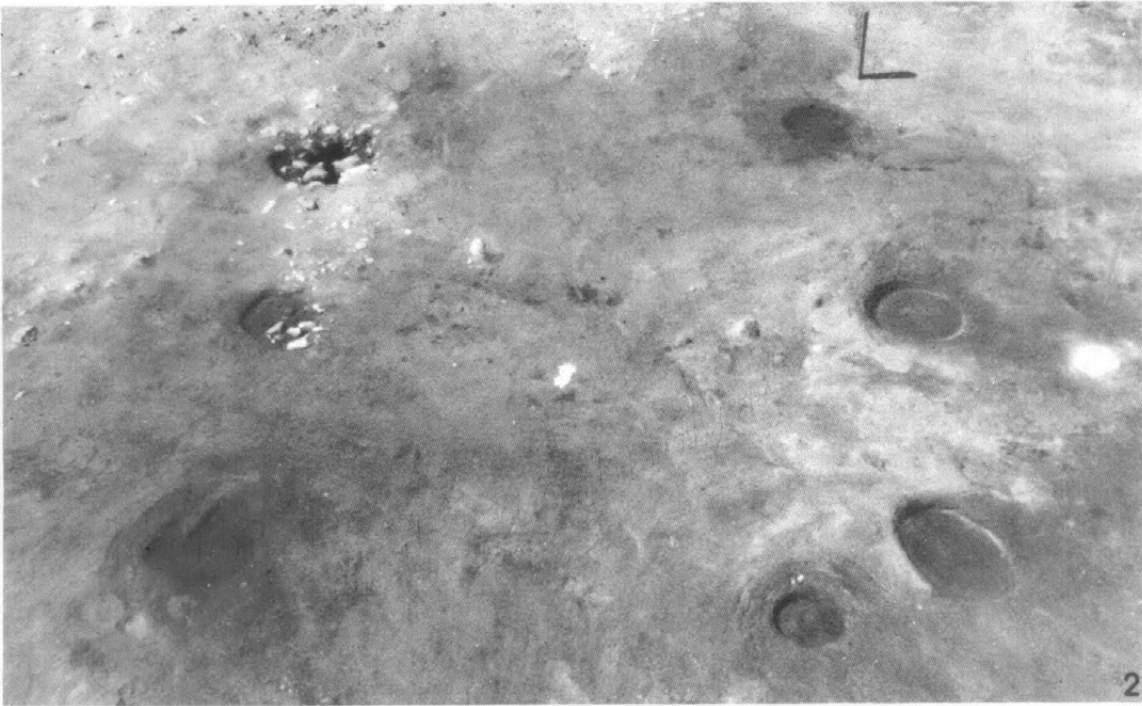
3. 建物址19
(南方より)



1. 建物址20
(北方より)



2. 建物址21
(南方より)



3. 建物址22
(東方より)



1. 建物址23
(南方より)



2. 建物址24
(南方より)

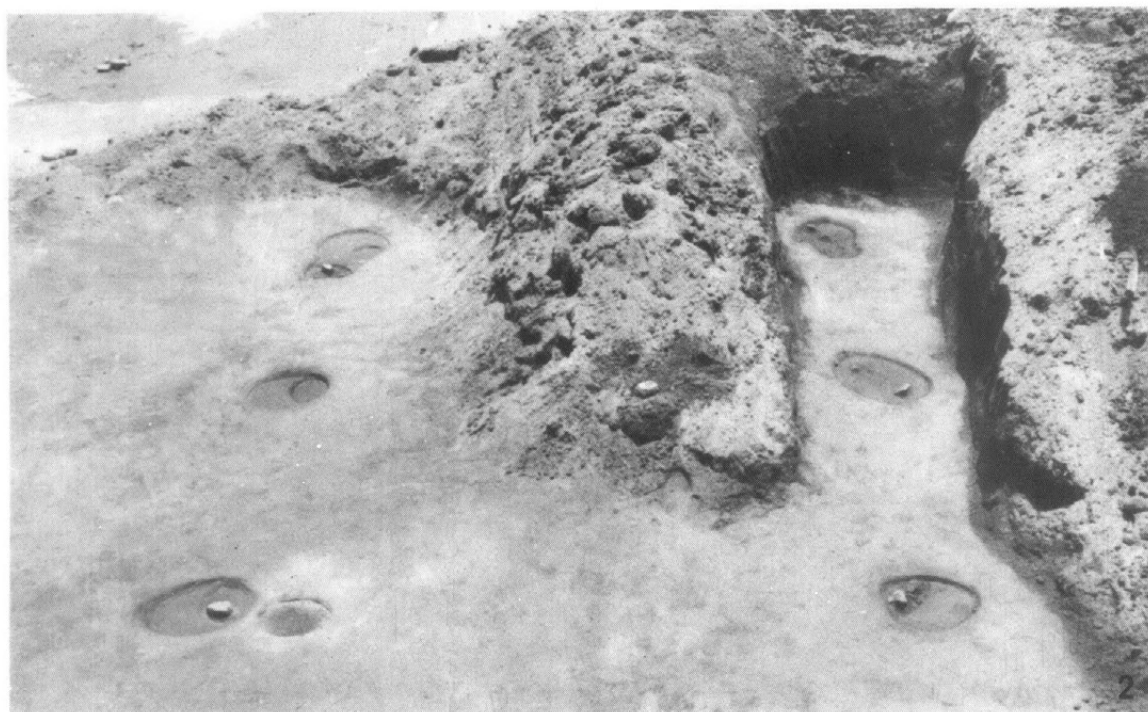


3. 建物址25
(東方より)





1. 建物址26
大型ピットP405
(南方より)



2. 建物址27
(北方より)



3



3. 4. 建物址27
P429内土器出土
状況(3 罎4 器台)

1. 簡易水路部検出
使途不明の池状遺構
(東方より)

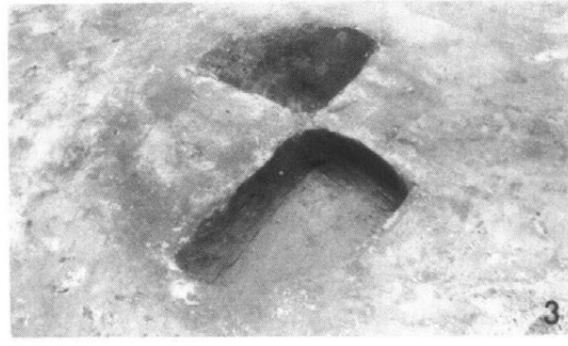
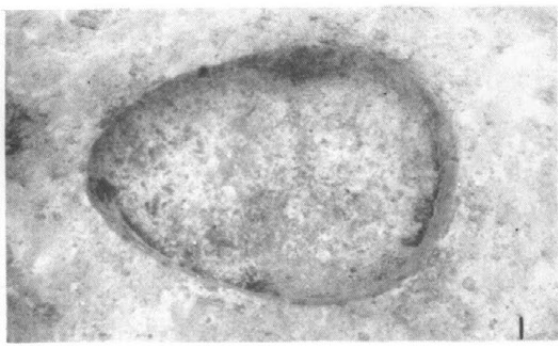


2. 池状遺構
土器出土状況

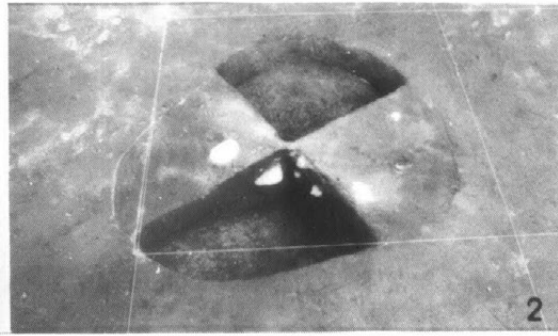


3. 池状遺構
切り合い大型ピット
P442

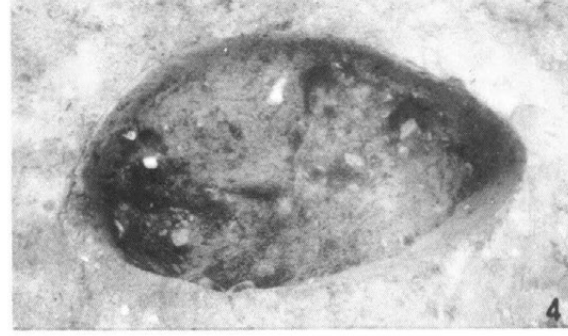




1. 2. P₃₃₀



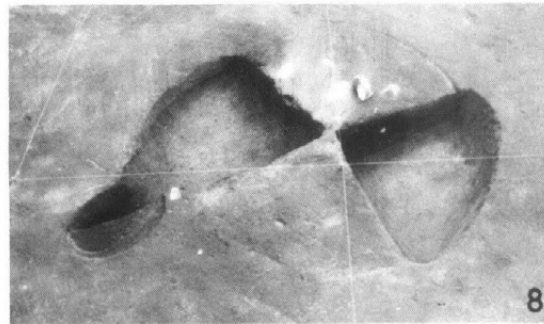
3. P₄₄₃



4. P₃₃₆

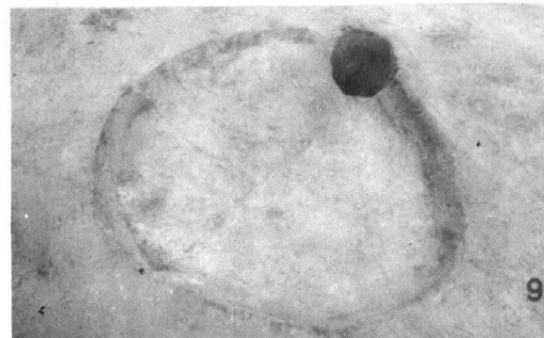


5. 借馬遺跡A地区
北西角大型ピット
郡(南方より)



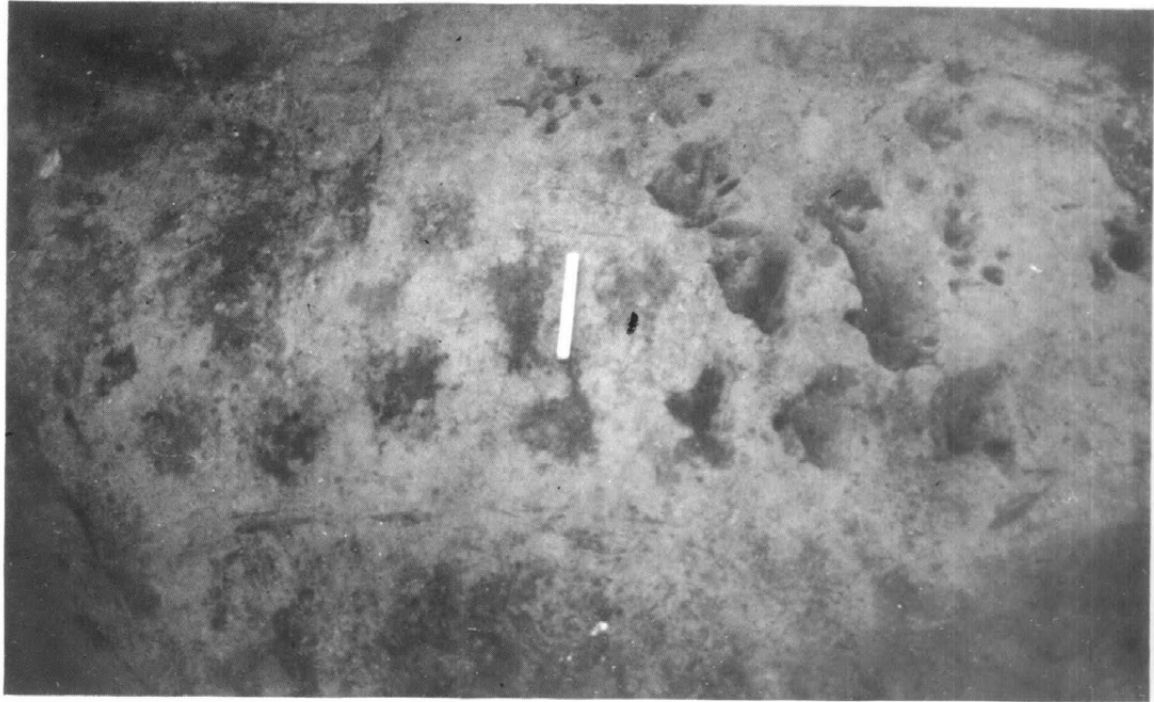
6. P₄₃₁ P₄₃₂ P₄₃₃
P₄₃₄ P₄₃₅ P₄₃₆
P₄₃₇

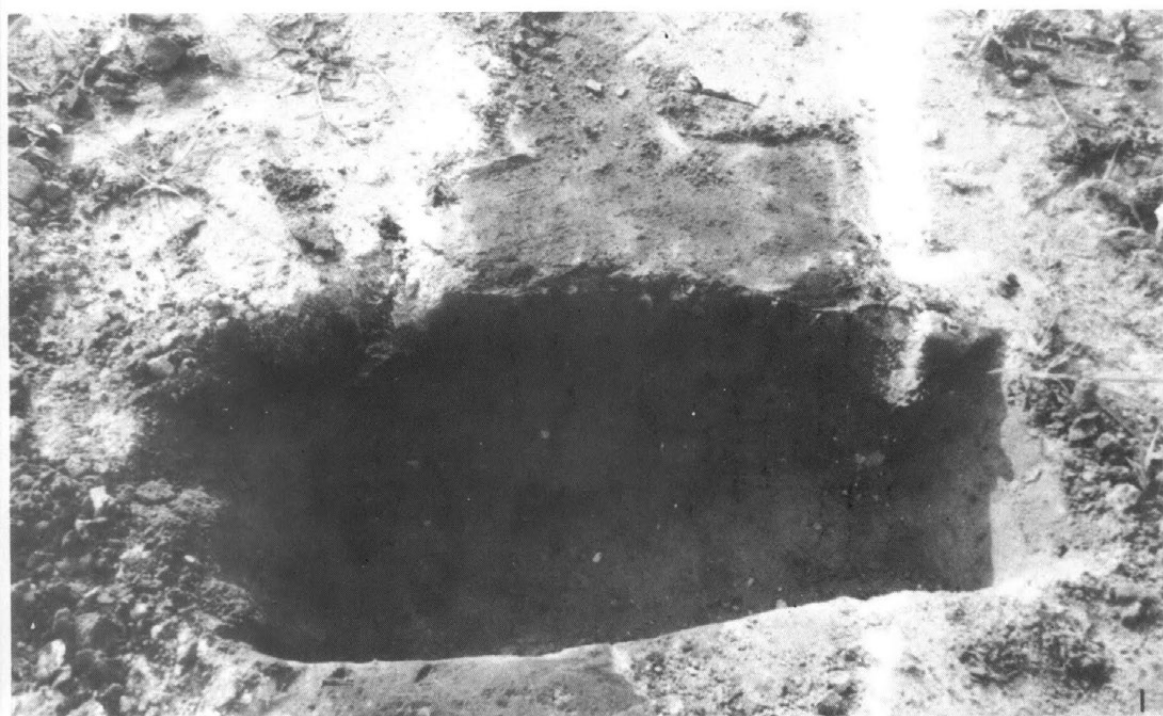
7. P₄₃₆ 内土器出土
状況



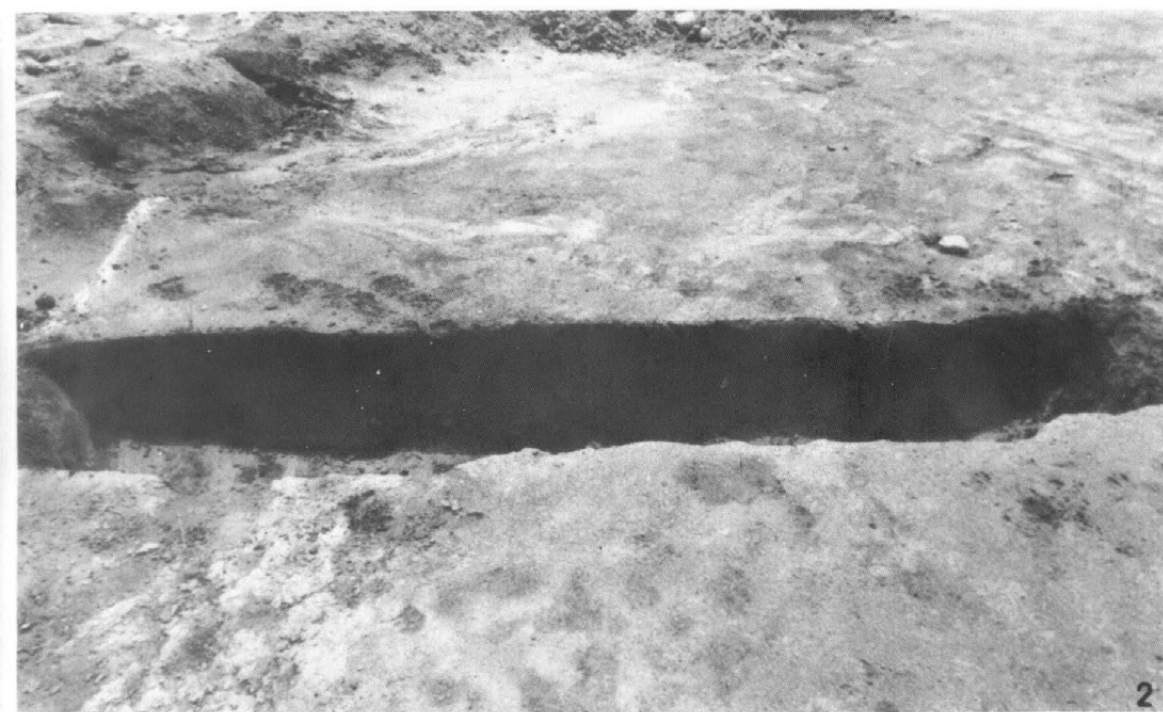
8. 9. P₄₀₅ P₄₂₅

1. 2.
人の足跡と推定さ
れる模様

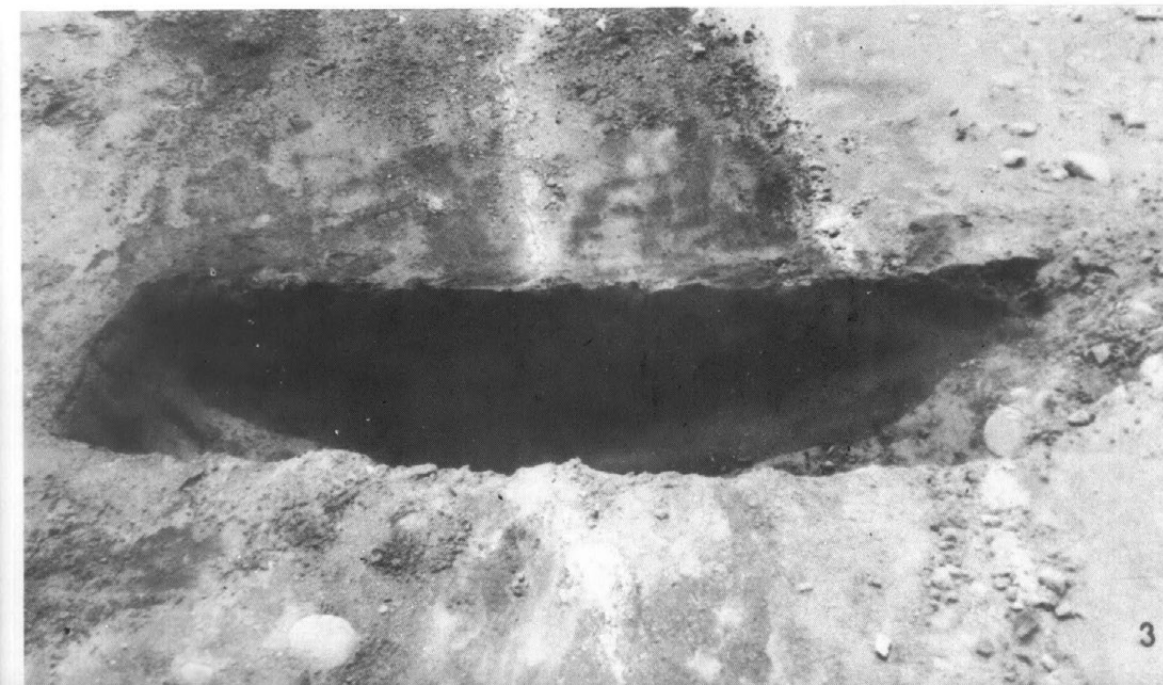




1. 溝址 2 断面



2. 河川址 2 断面



3. 溝址 1 断面

1. 借馬遺跡B地区
全景(南方より)





1. 60号住居址 (B地区
1号住居址)
(南方より)

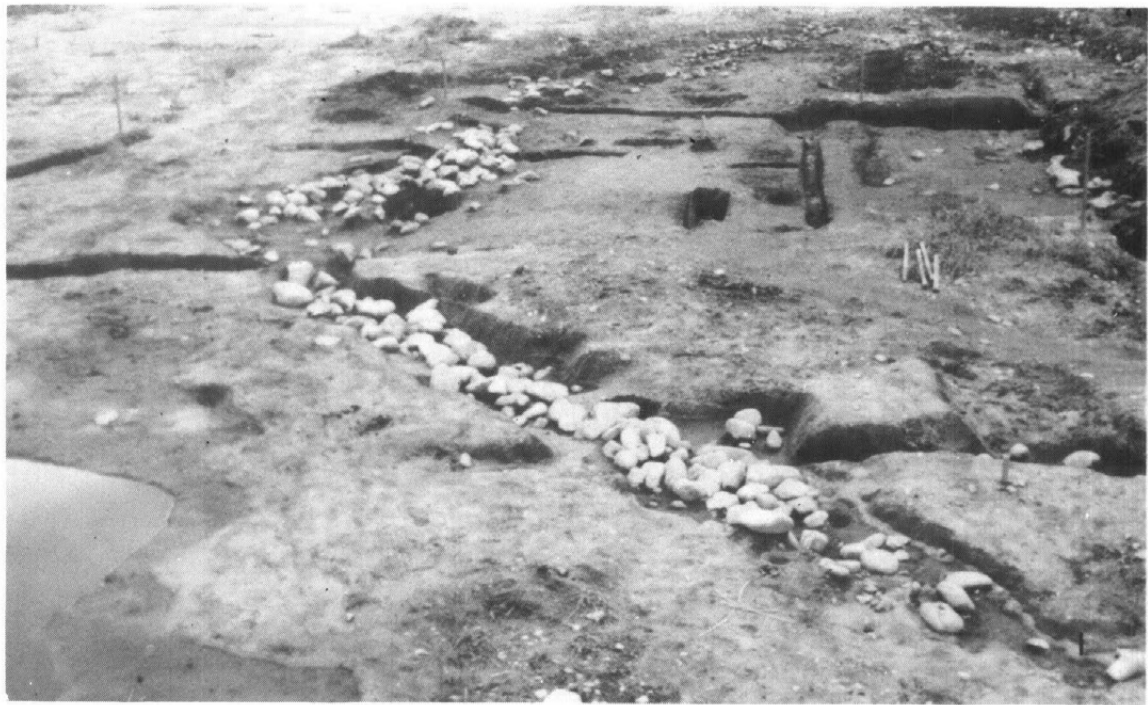


2. 60号住居址カマド



3. 建物址28 (B地区
建物址1)
(東方より)

1. 借馬遺跡B地区
河川址礫状況



2. 同上（屈曲部より
南方を望む）



3. 同上（屈曲部より
北方を望む）

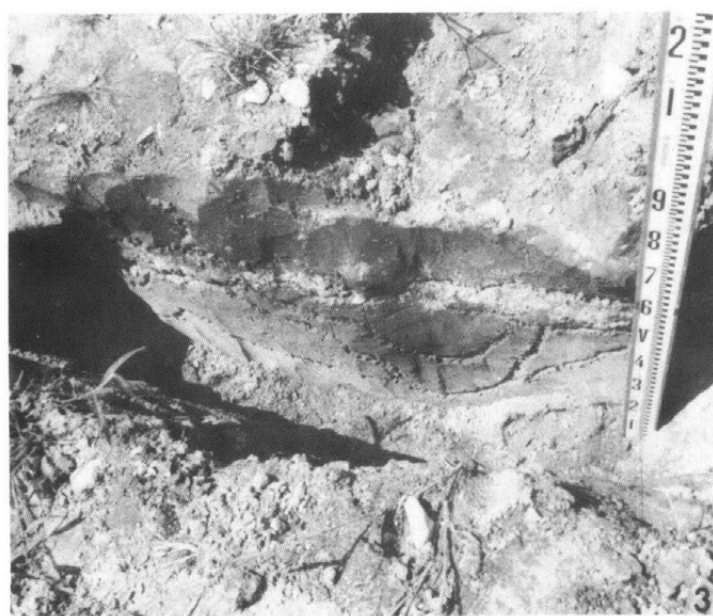




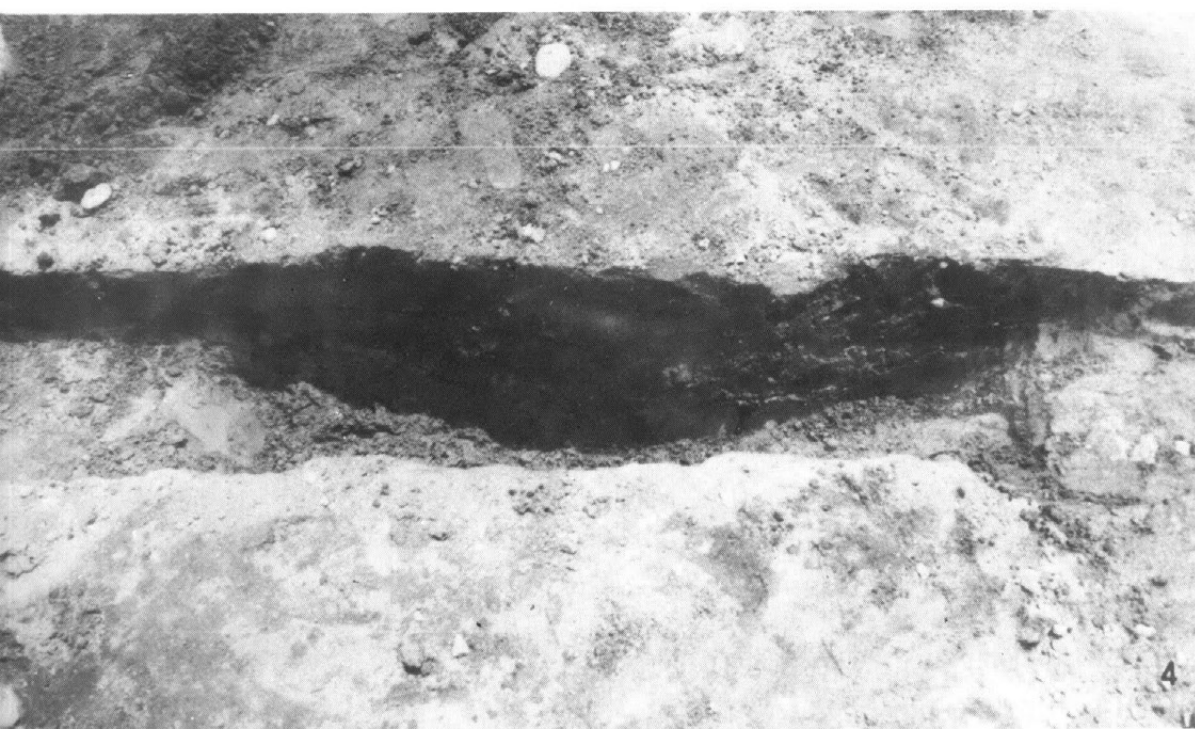
1. 3.
B地区河川址と
溝状遺構切り合い
断面



2



2. 河川址ピット切り
合い断面

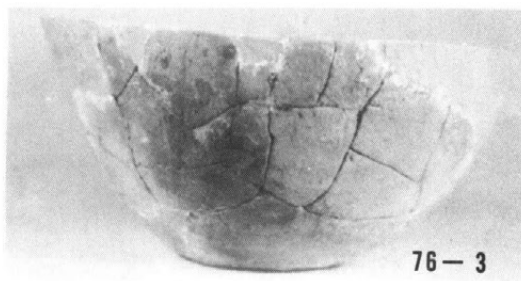


4. 河川址断面
(礫確認前)

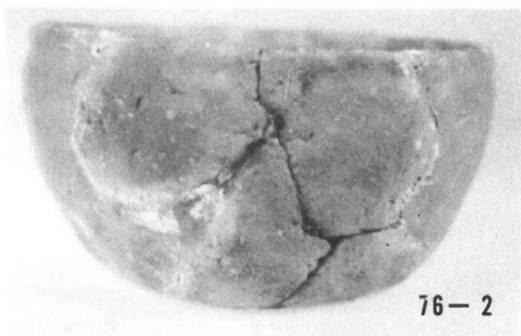
1. 11号住居址出土
土器

76-1.2 (1:2)

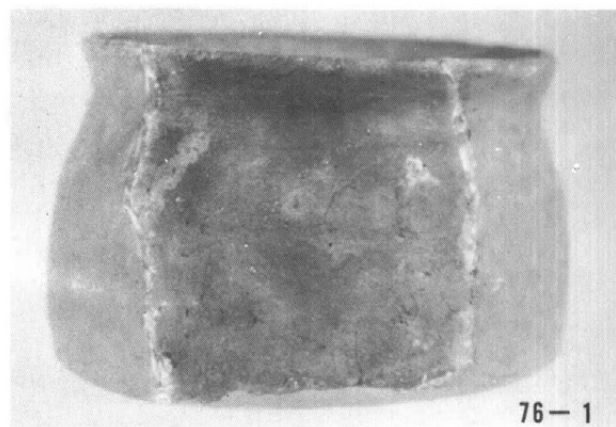
76-3 (1:3)



76-3



76-2



76-1

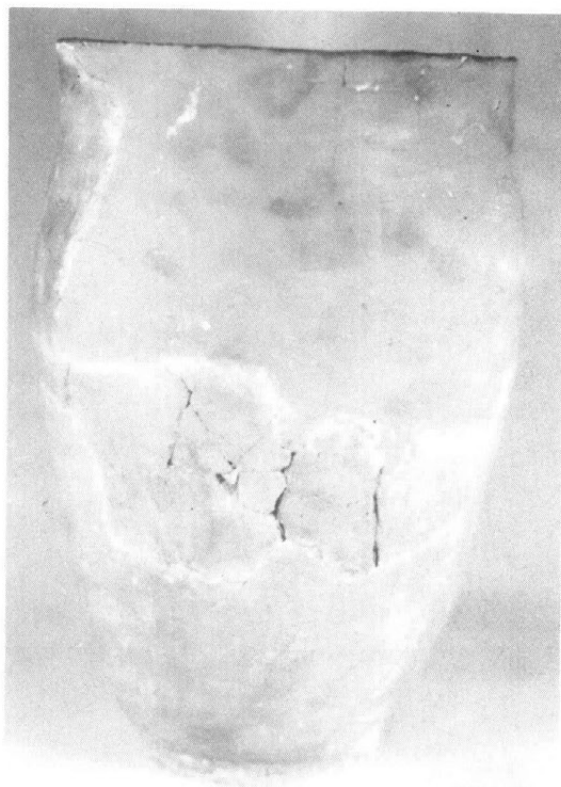
2. 12号住居址
出土土器

78-1.6

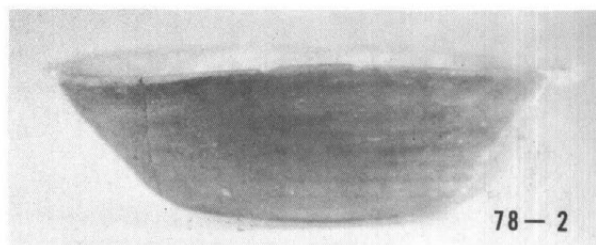
(1:3)

78-2.3.4.

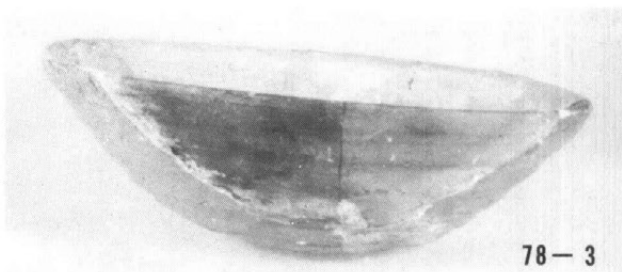
5(1:2)



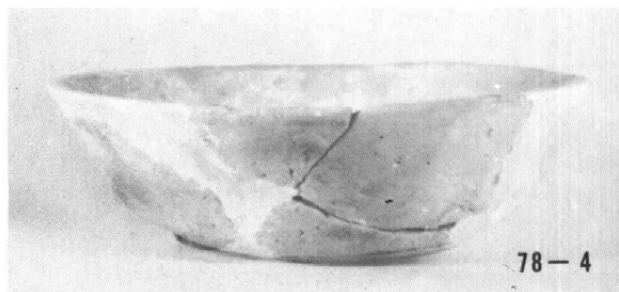
78-1



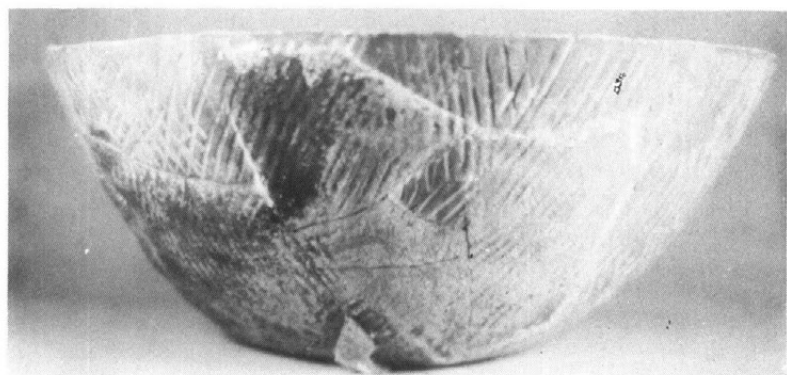
78-2



78-3



78-4

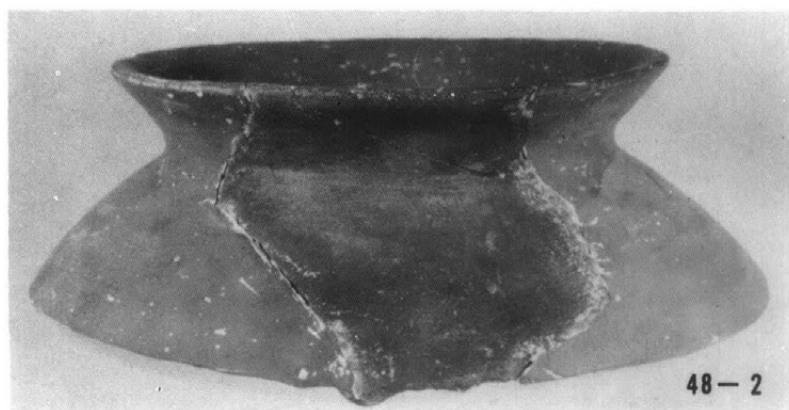
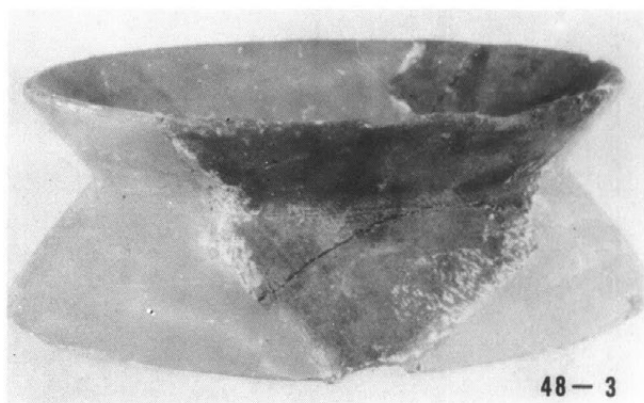


78-6

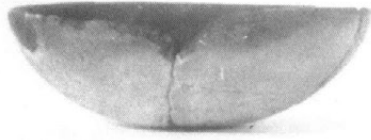


78-5

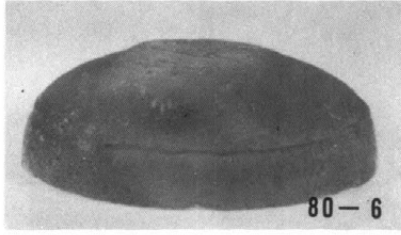
1. 13号住居址出土土器
48-1 (1:4)
48-2.3.4.5(1:3)



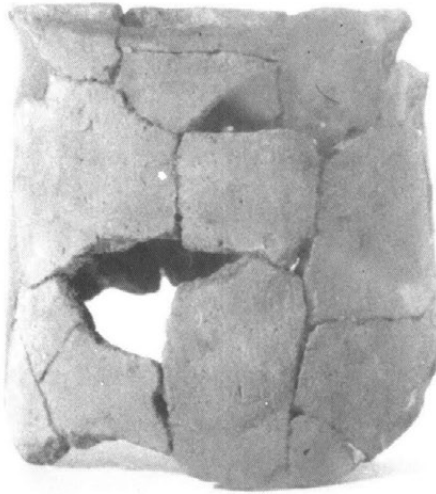
1. 14号住居址出土土器
(1:3)



80-2



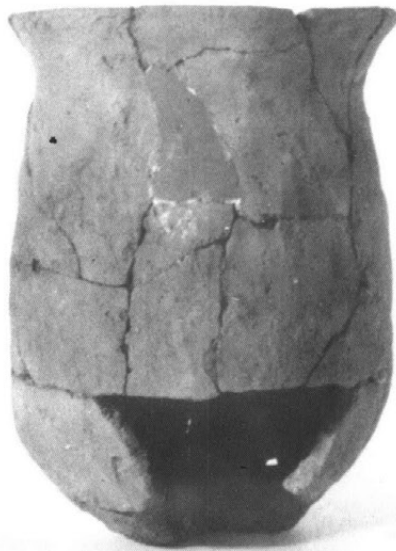
80-6



80-11



80-13

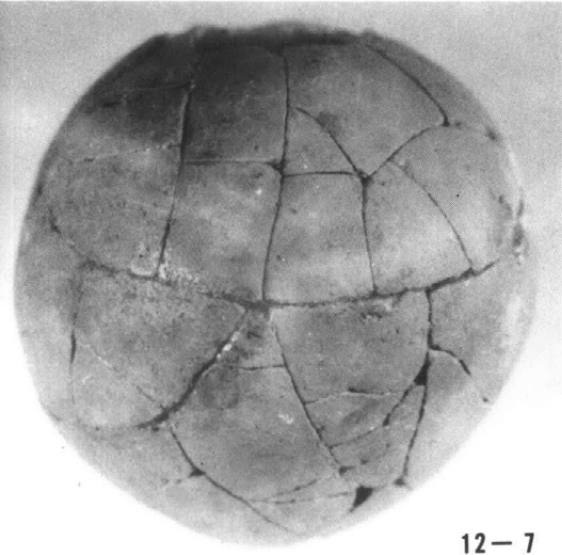


80-12

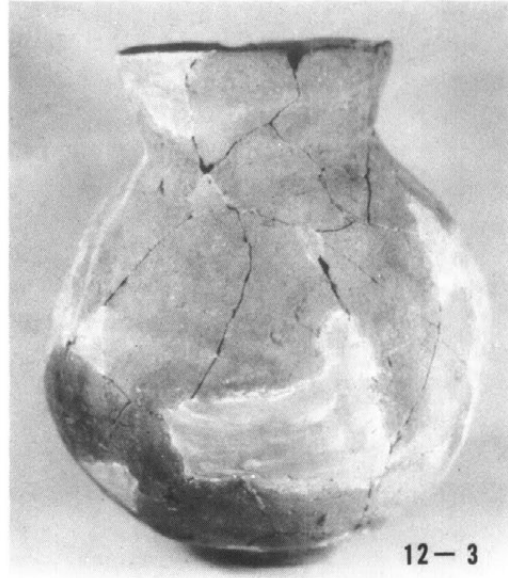


80-8

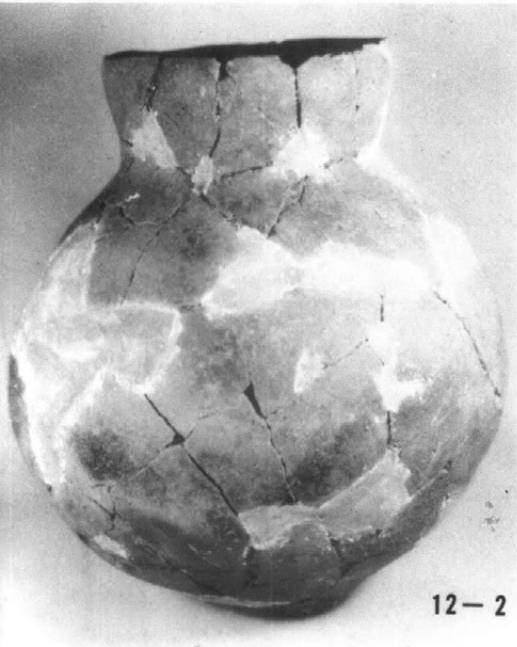
1. 15号住居址出土土器
12-1.2.3.5.6 (1:3)
12-7.8 (1:2)



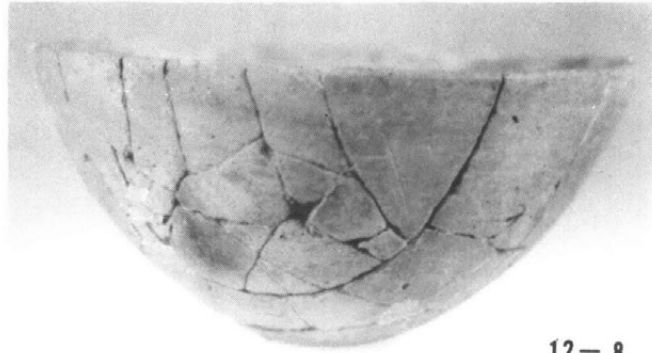
12-7



12-3



12-2



12-8



12-6

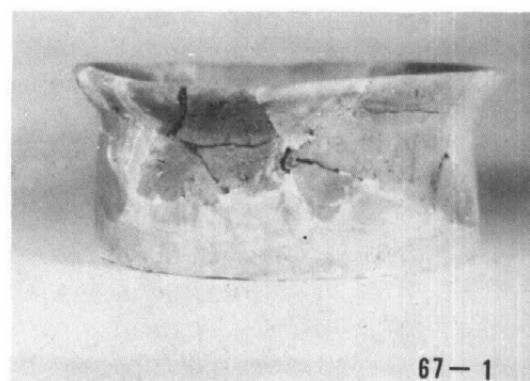
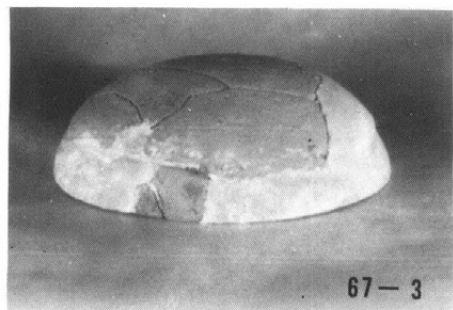


12-1

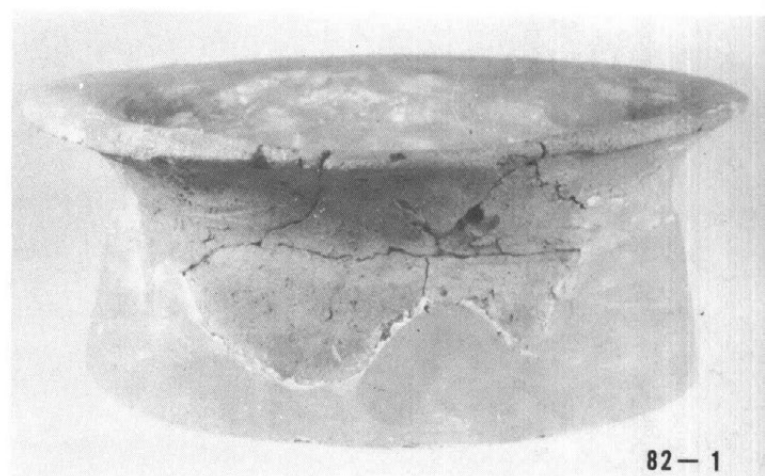
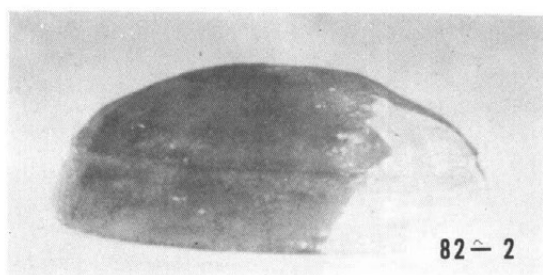


12-5

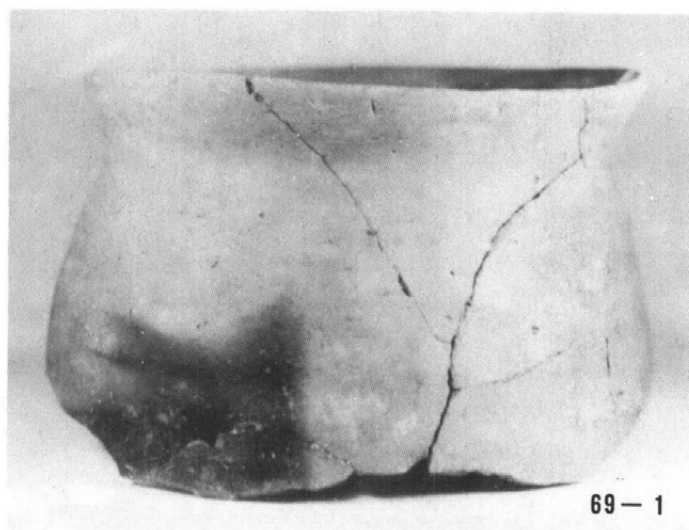
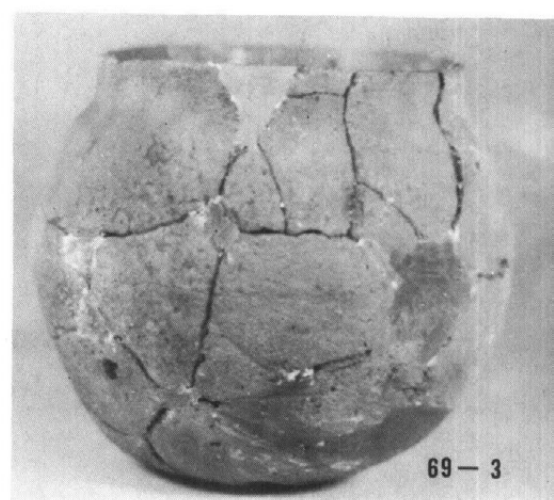
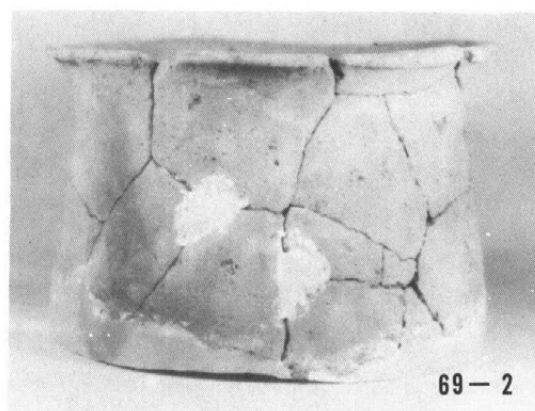
1. 16号住居址出
土土器
67-1.3
(1:2)



2. 17号住居址出
土土器
82-2
(1:2)
82-1
(1:3)



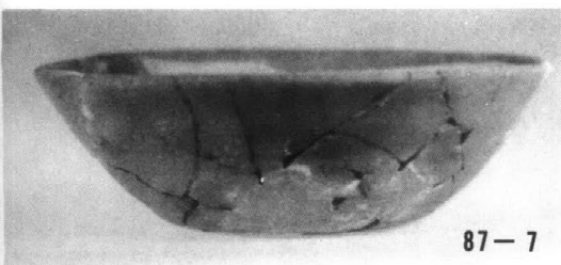
3. 18号住居址出
土土器
69-1.2
(1:3)
69-3
(1:2)



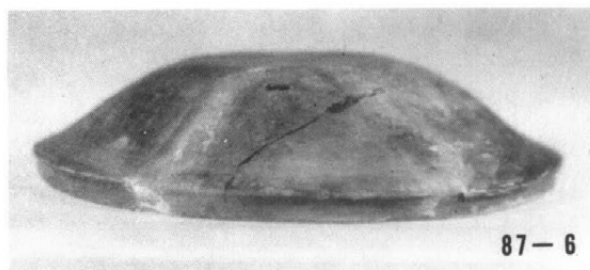


71-1

1. 19号住居址
出土土器
17-1 (1:2)



87-7

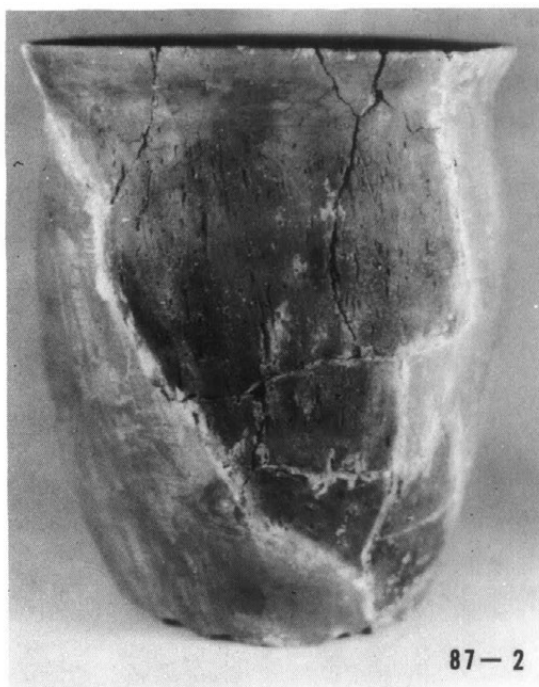


87-6

2. 20号住居址
出土土器
87-1.2 (1:3)
87-7.6 (1:2)

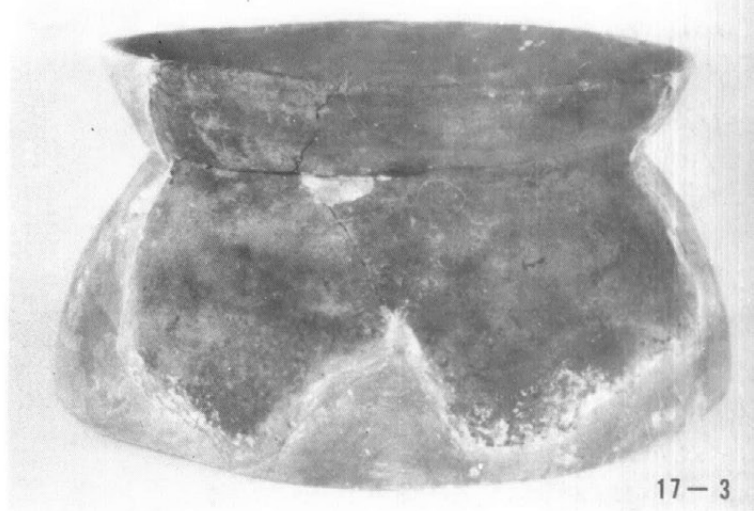
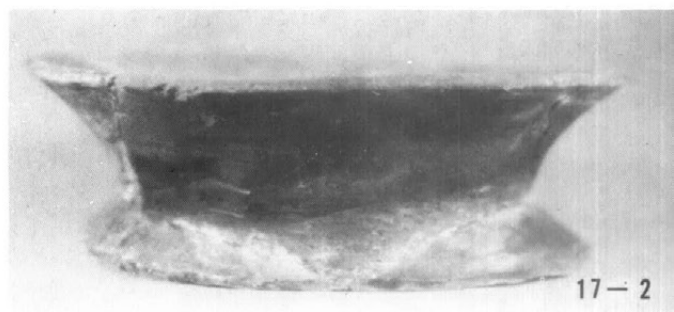
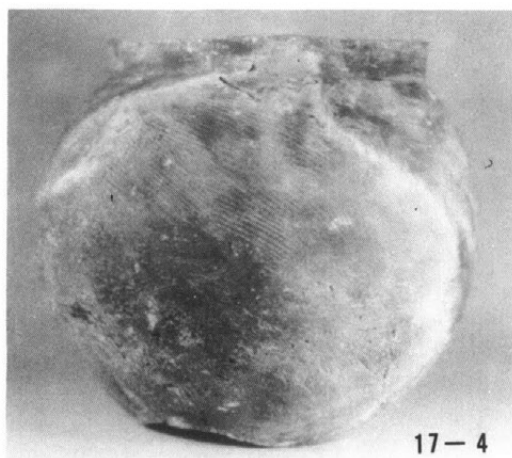
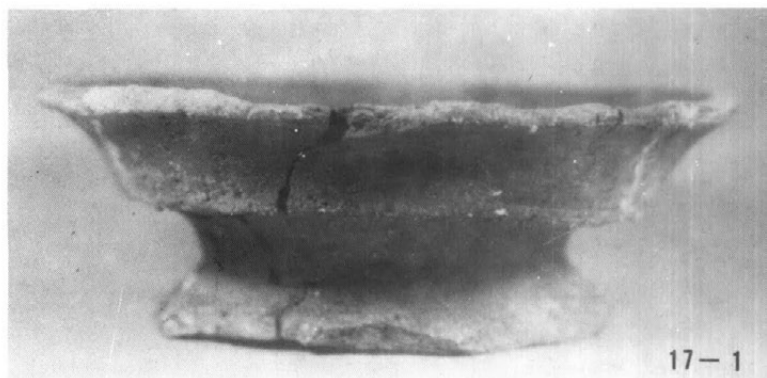


87-1

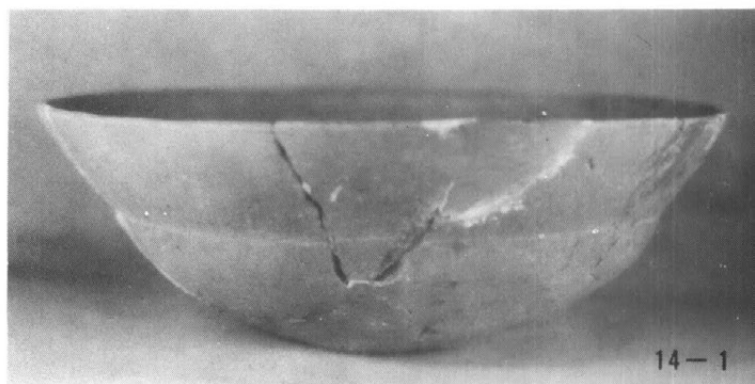
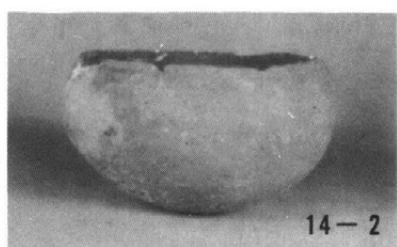


87-2

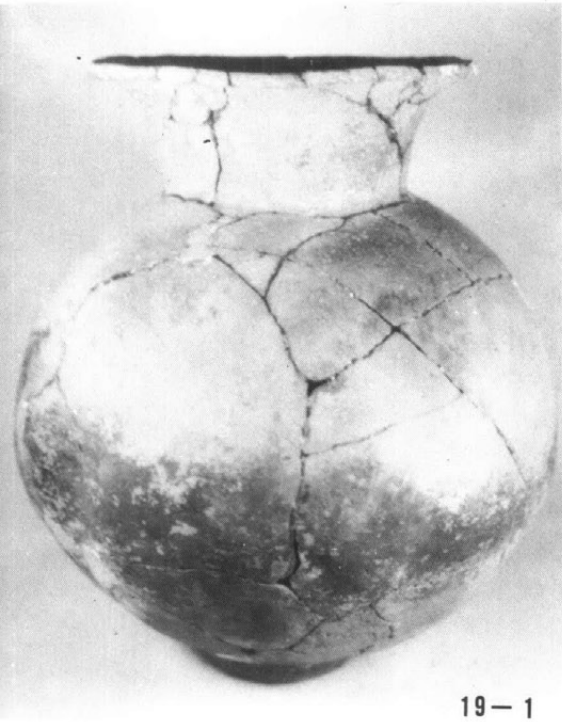
1. 24号住居址出土土器
17-1.2.3 (1:2)
17-4 (1:3)



2. 25号住居址出土土器
(1:2)



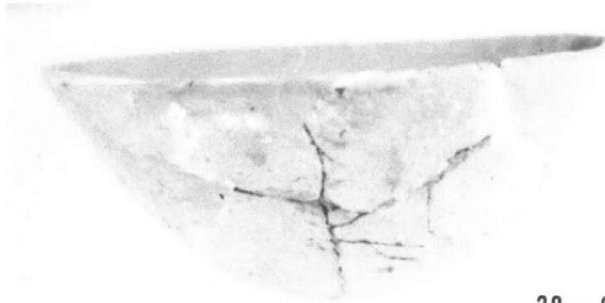
1. 26号住居址出土土器
器
19-1.2.4
(1:3)
19-7 20-9.10.11
12.13.14(1:2)



19-1



20-12



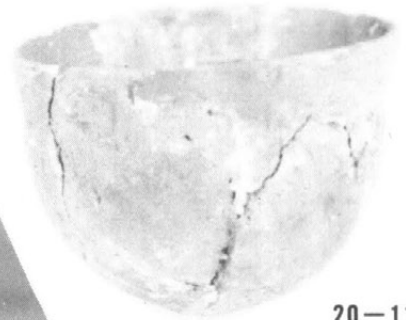
20-9



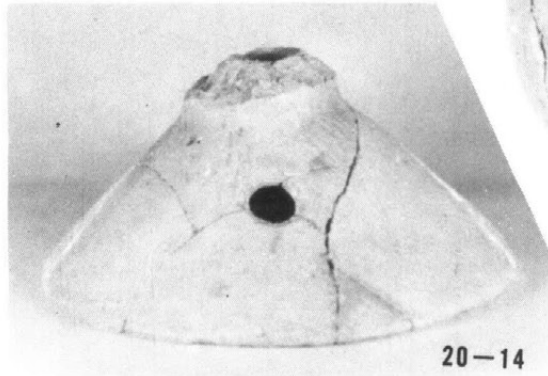
19-2



20-10



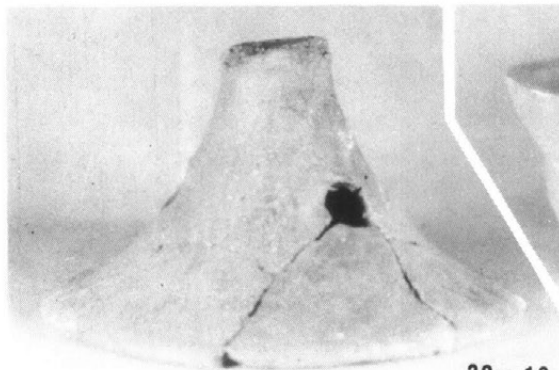
20-11



20-14



19-4

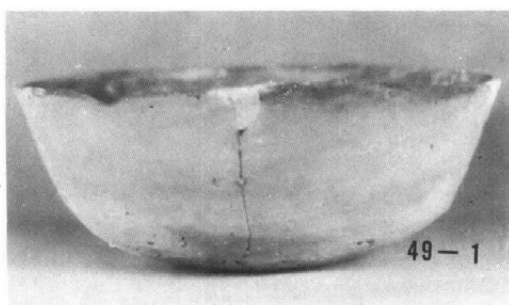


20-13

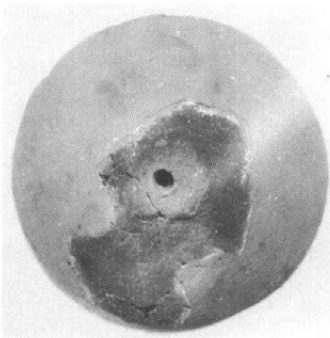


19-7

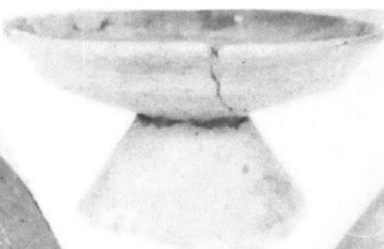
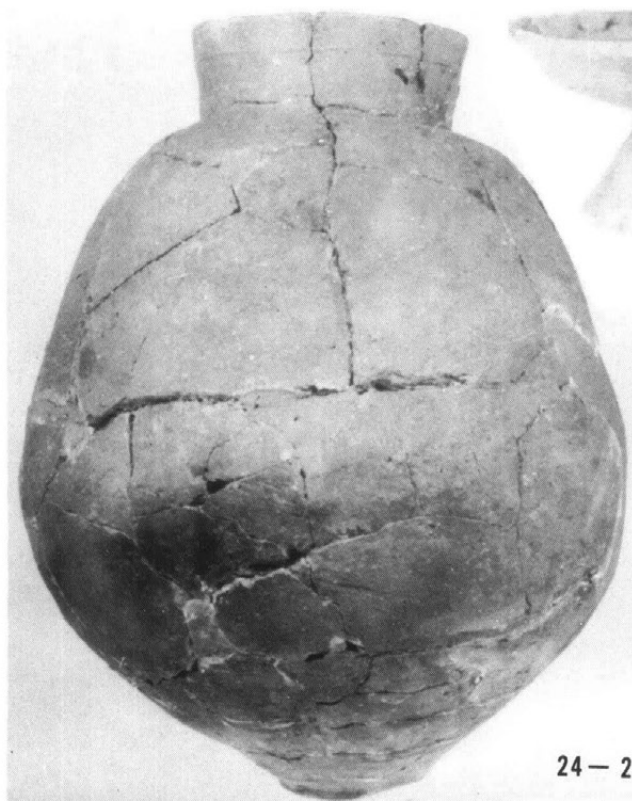
1. 27号住居址出土土器
(1:2)



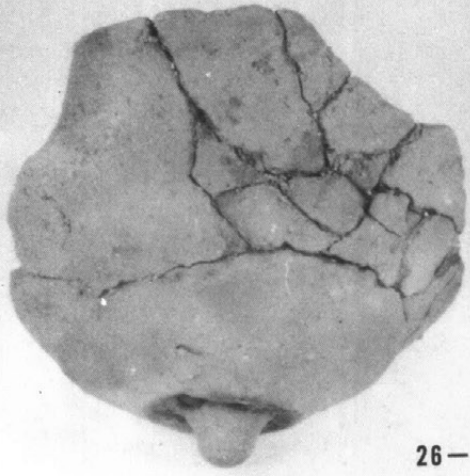
2. 30号住居址出土土器
(1:3)



24-6

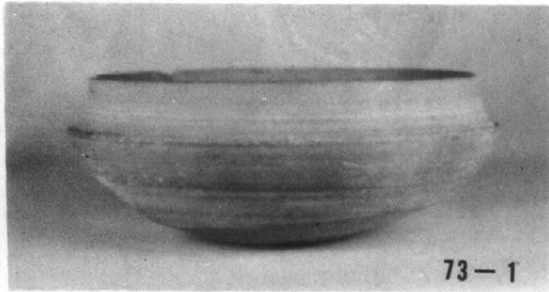


1. 31号住居址出土土器
(1:2)



26-2

2. 33号住居址出土土器
(1:2)

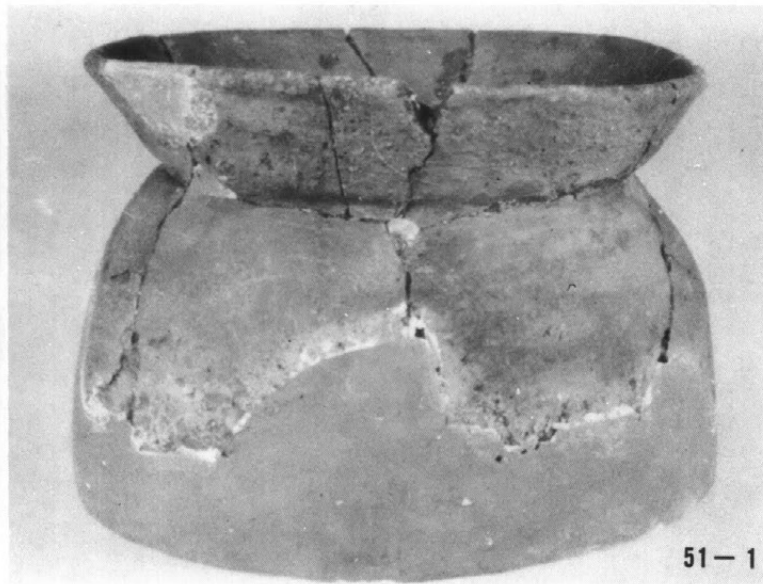


73-1

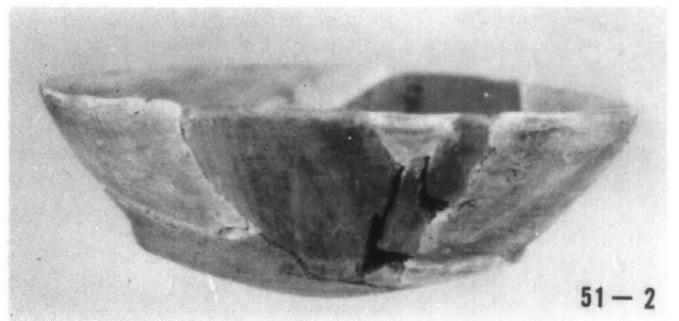


73-2

3. 34号住居址出土土器
(1:2)



51-1



51-2

4. 35号住居址出土土器
(1:2)

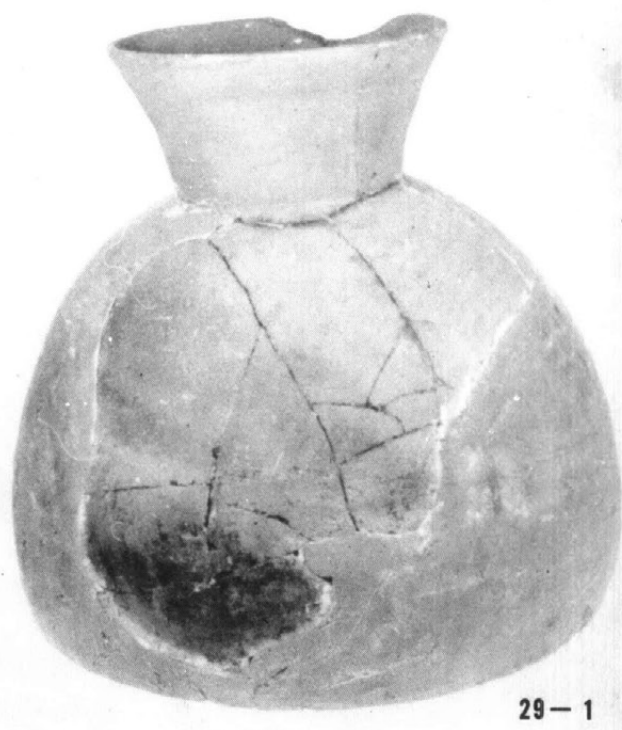
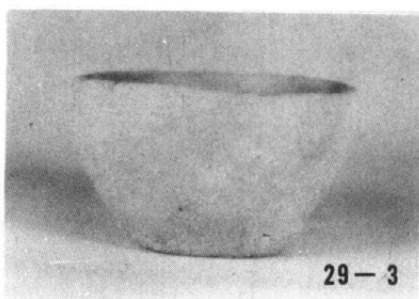
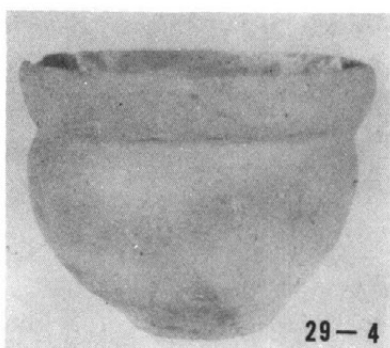
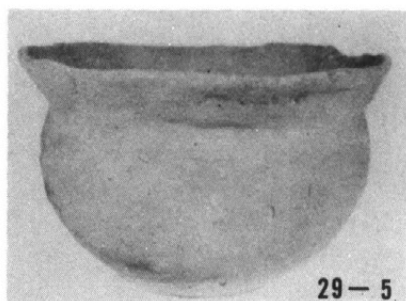


53-1

1. 36号住居址出土土器

29-1.2 (1:3)

29-3.4.5 (1:2)



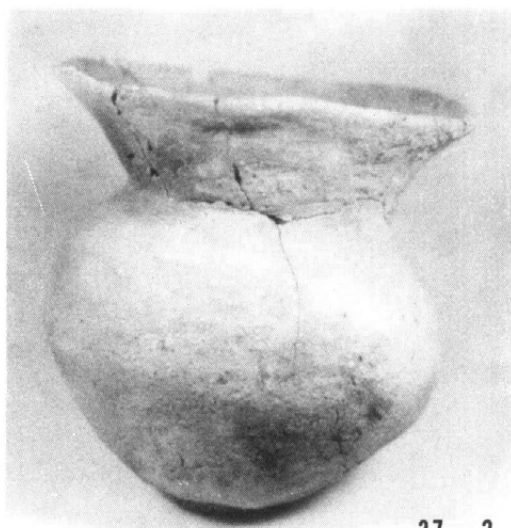
1. 37号住居址出土土器

37-1 (1:3)

37-2.3.4.5.6.7 (1:2)



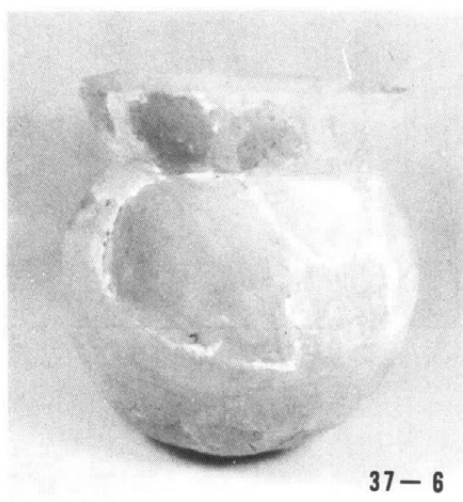
37-5



37-2



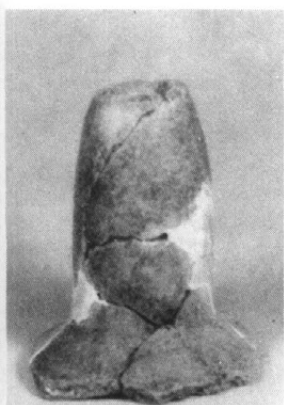
37-4



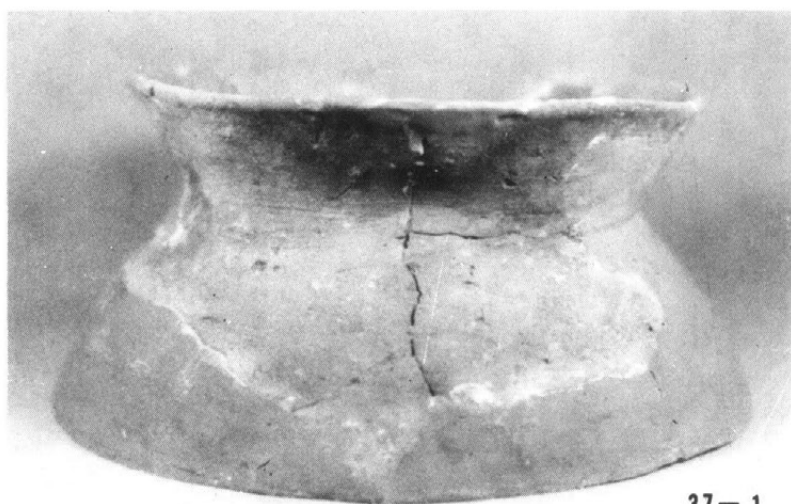
37-6



37-3

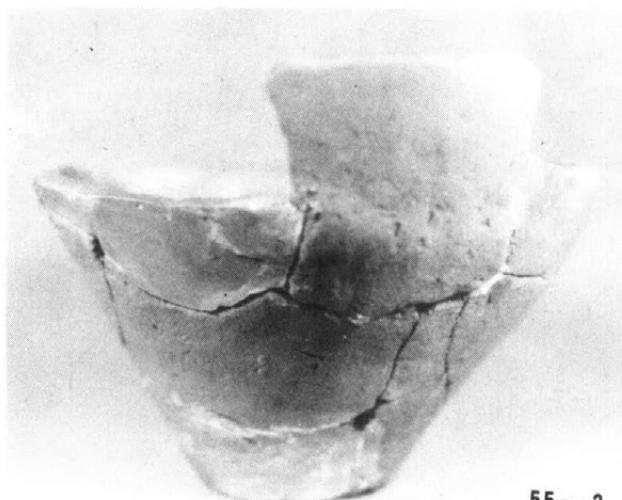


37-7

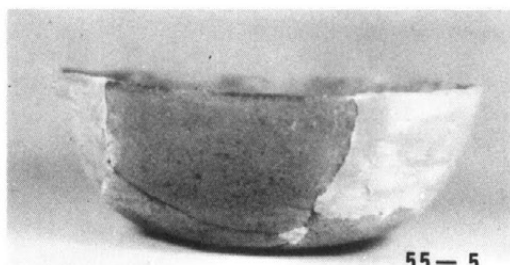


37-1

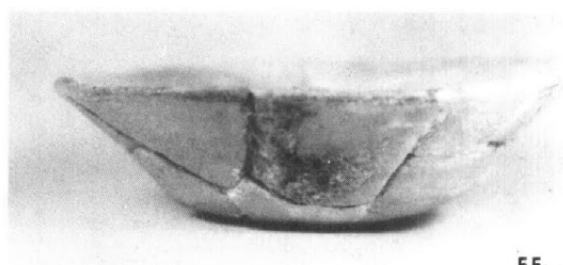
1. 39号住居址出土土器
(1:2)



55-3



55-5



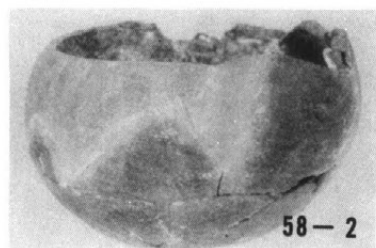
55-6

2. 41号住居址出土土器
(1:3)

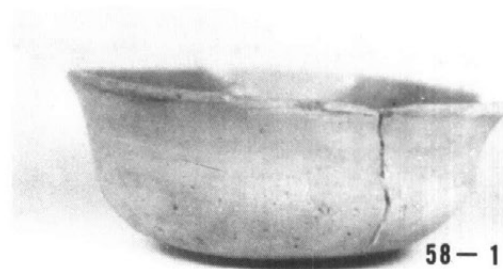


56-1

3. 42号住居址出土土器
(1:2)

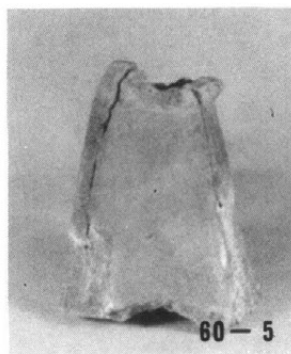
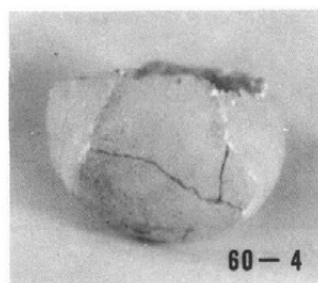
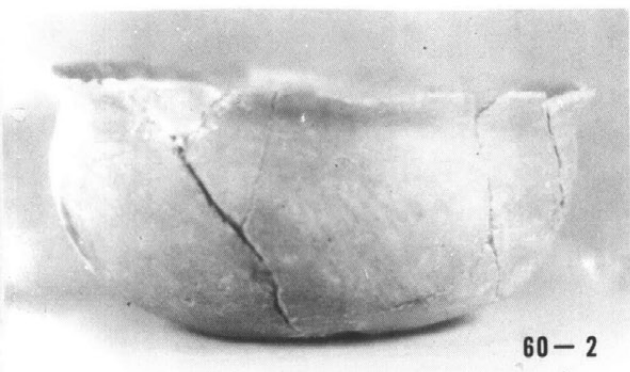
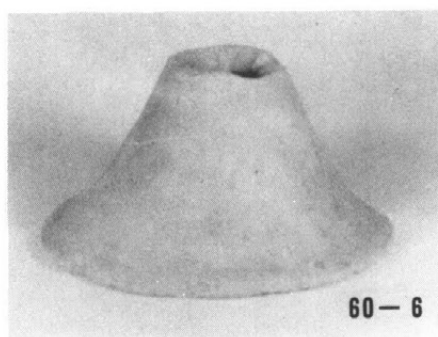
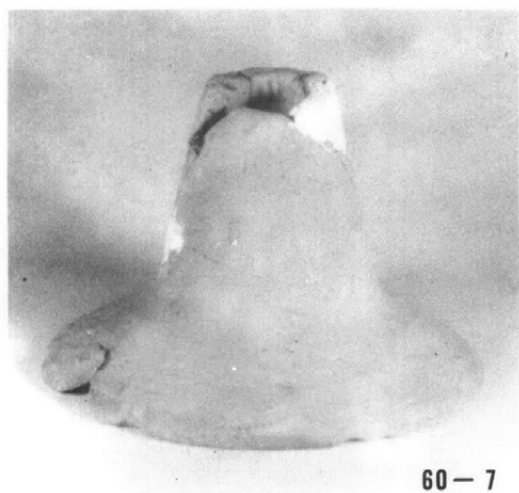


58-2

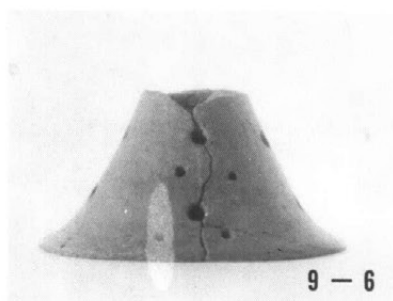


58-1

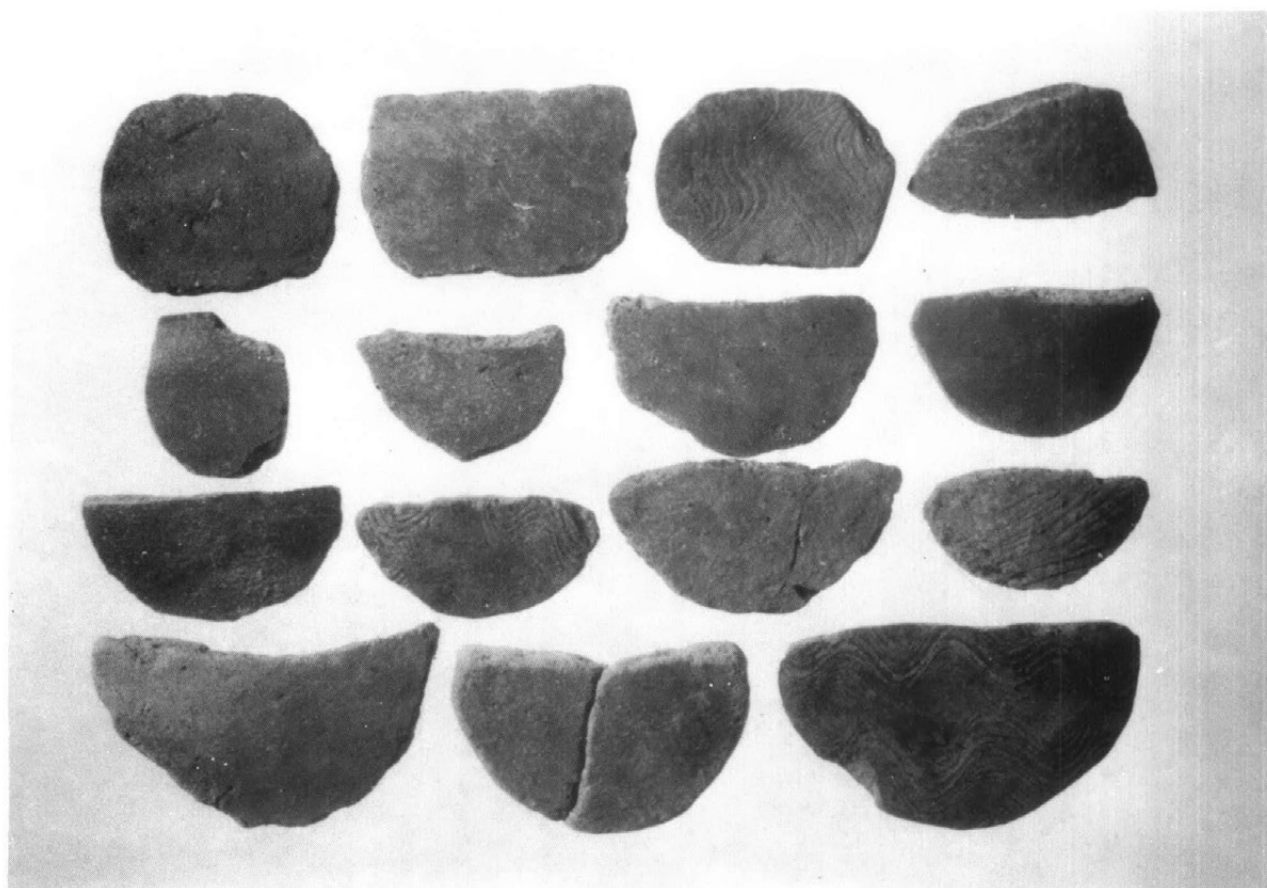
1. 43号住居址出土土器
(1:2)



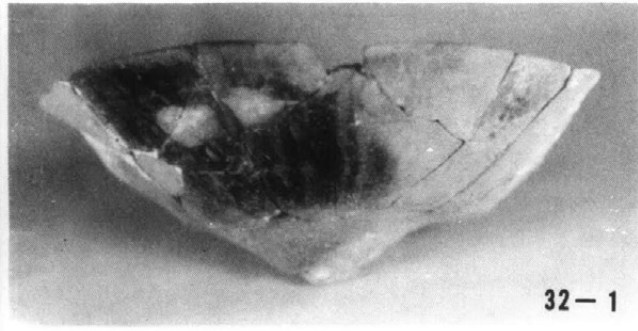
1. 45号住居址出土土器
(1:3)



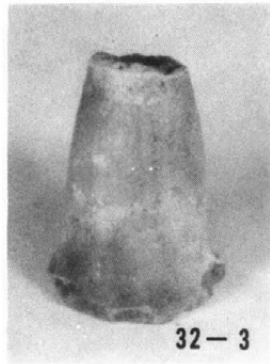
2. 45号住居址出土土器片製品
(1:1)



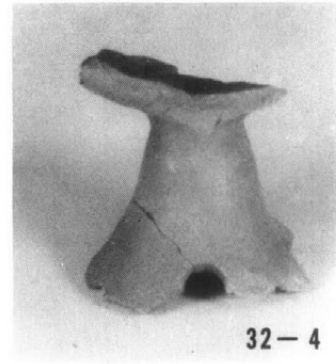
1. 46号住居址出土土器
(1:2)



32-1



32-3



32-4

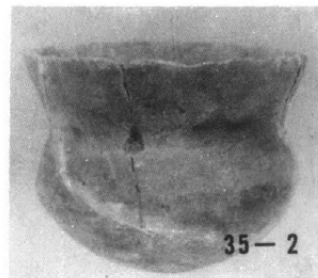
2. 48号住居址出土土器
(1:2)



35-4

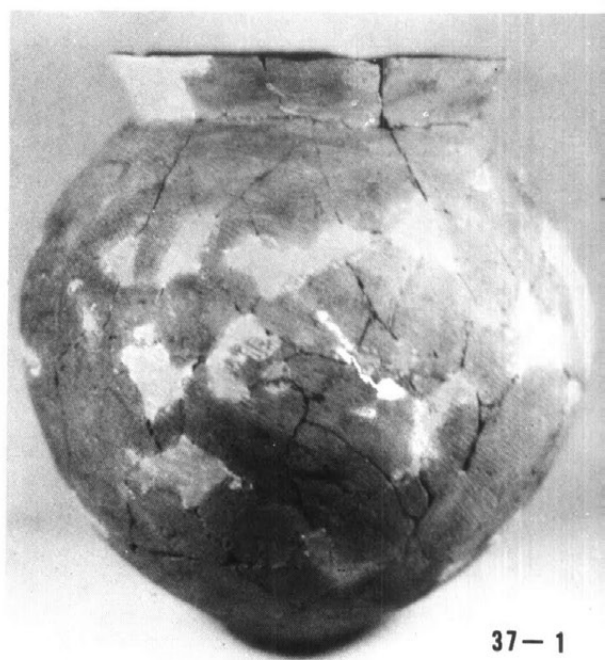
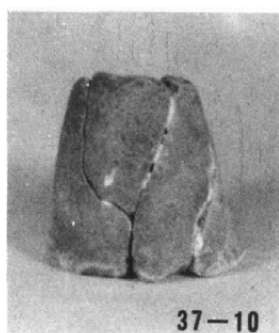
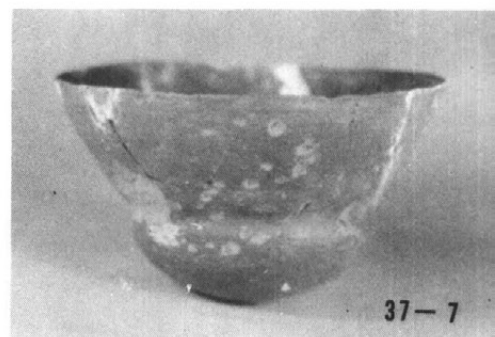
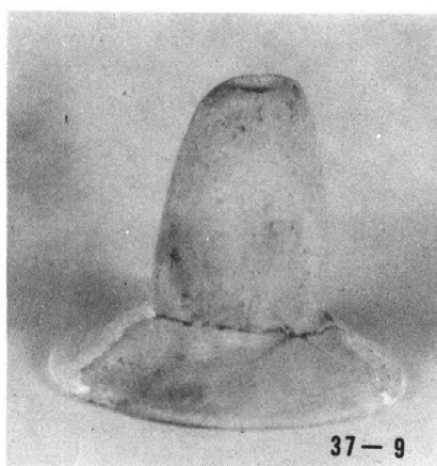
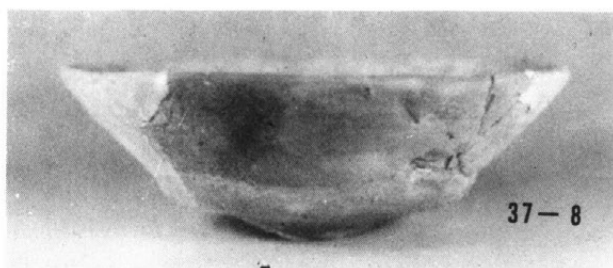


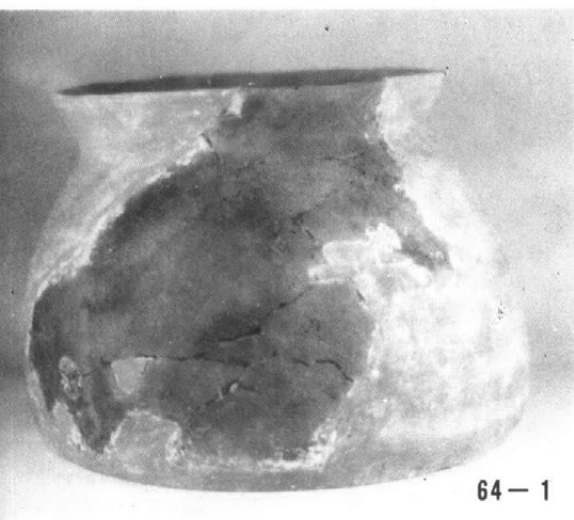
35-3



35-2

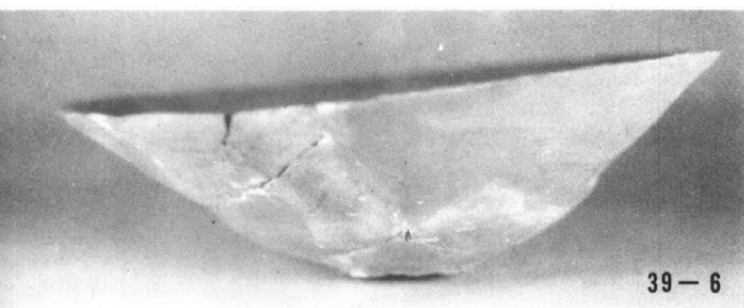
1. 49号住居址出土土器
37-1 (1:3)
37-6.7.8.9.10
(1:2)
37-11 (1:1)





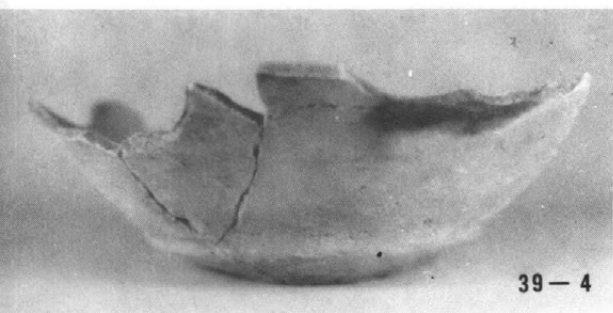
64-1

1. 52号住居址出土土器 (1:3)



39-6

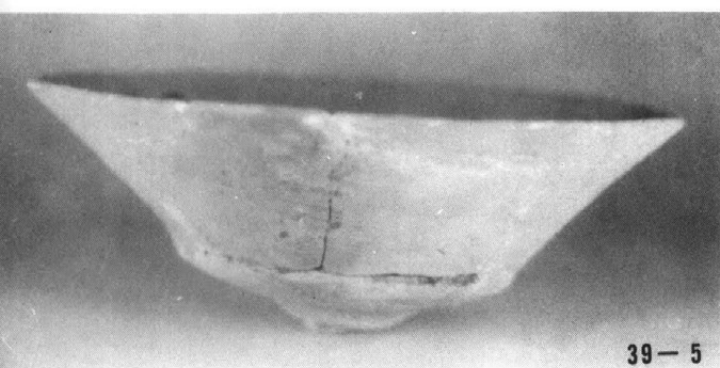
2. 53号住居址出土土器 (1:2)



39-4



39-8



39-5

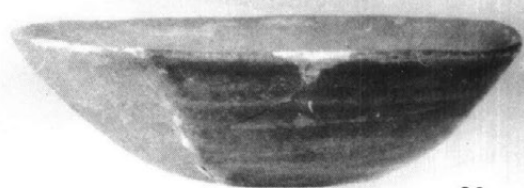


39-3

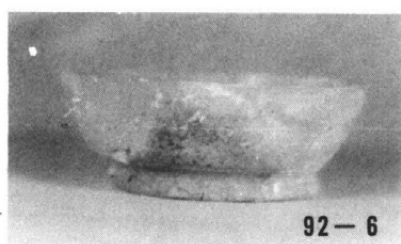
1. 55号住居址出土土器

92-2 (1:3)

92-4.5.6 (1:2)



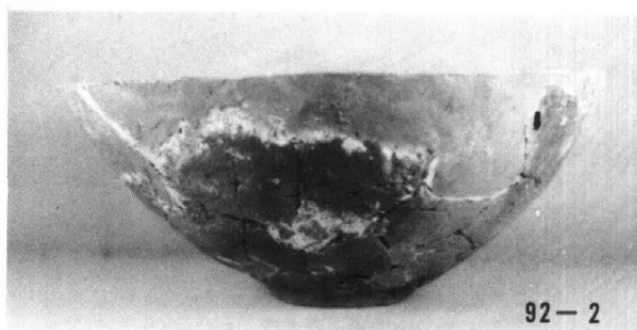
92-5



92-6



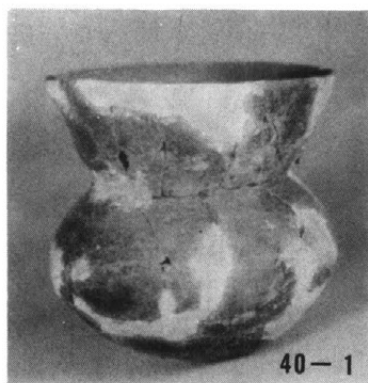
92-4



92-2

2. 56号住居址出土土器

(1:2)

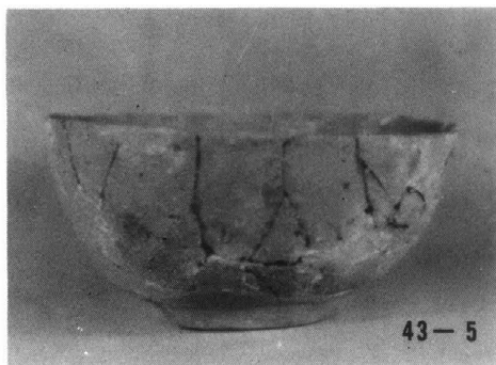
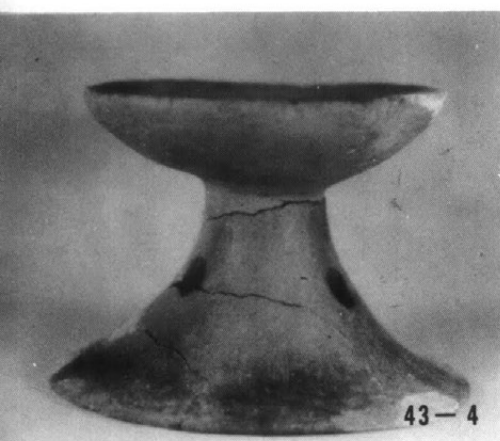
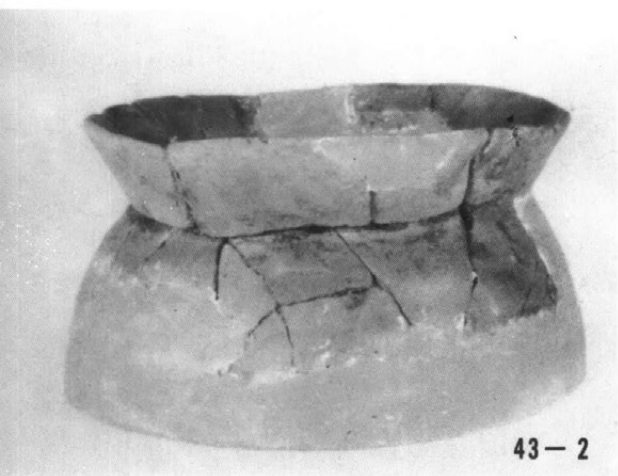


40-1

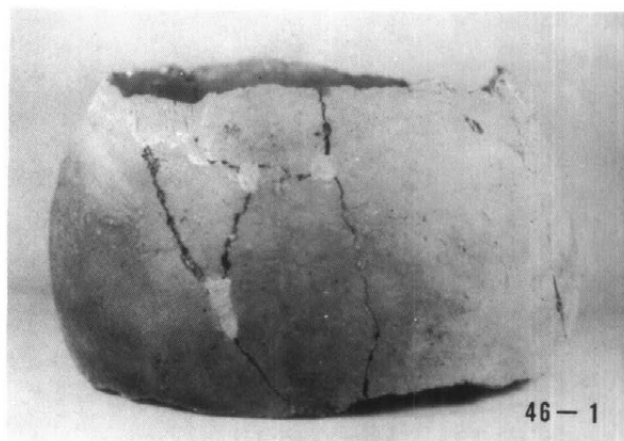
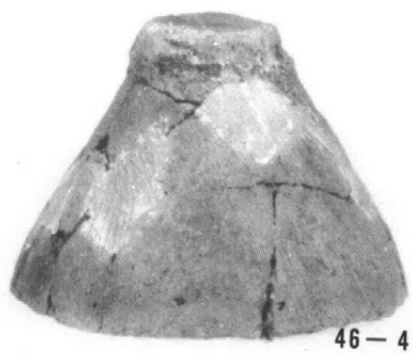
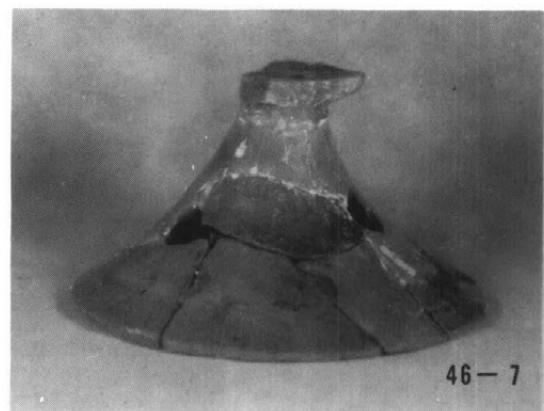
1. 57号住居址出土土器
43-1.7 (1:3)
43-2.4.5.6 (1:2)

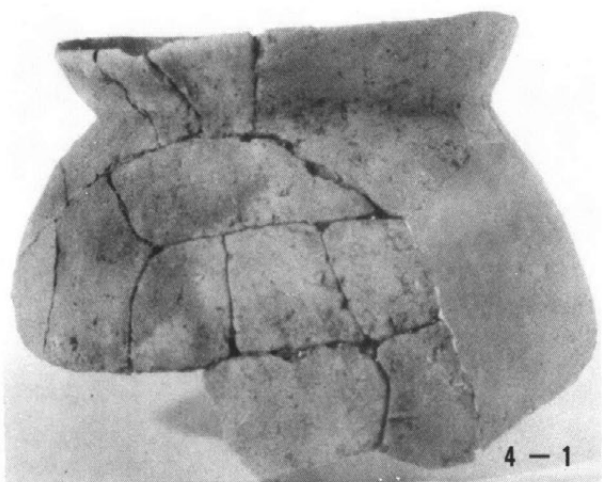


43-7

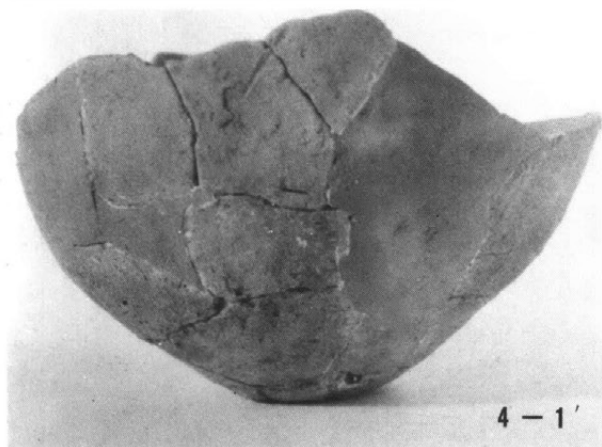


1. 59号住居址出土土器
46-1 (1:3)
46-4.5.6.7 (1:2)

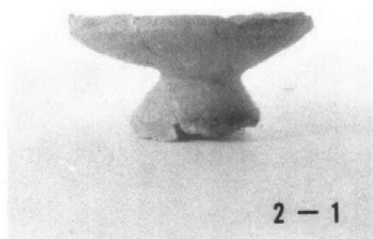




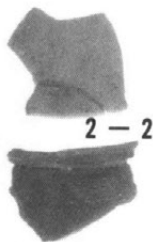
4-1



4-1'



2-1



2-2

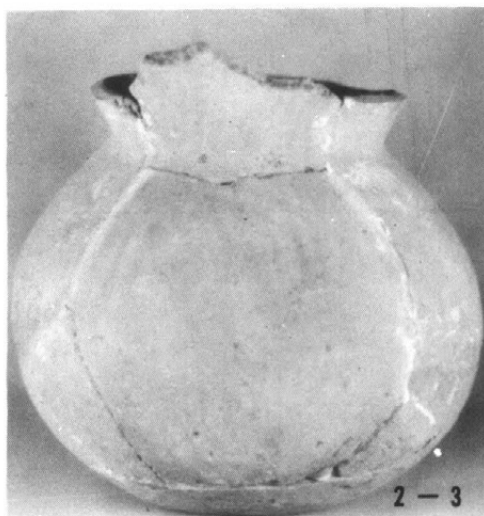
2-4

1. 建物址支柱列ピット
内出土土器

(1:3)

4-1 1' 建物址
20 (同一個体)

2-1.2.4
建物址27



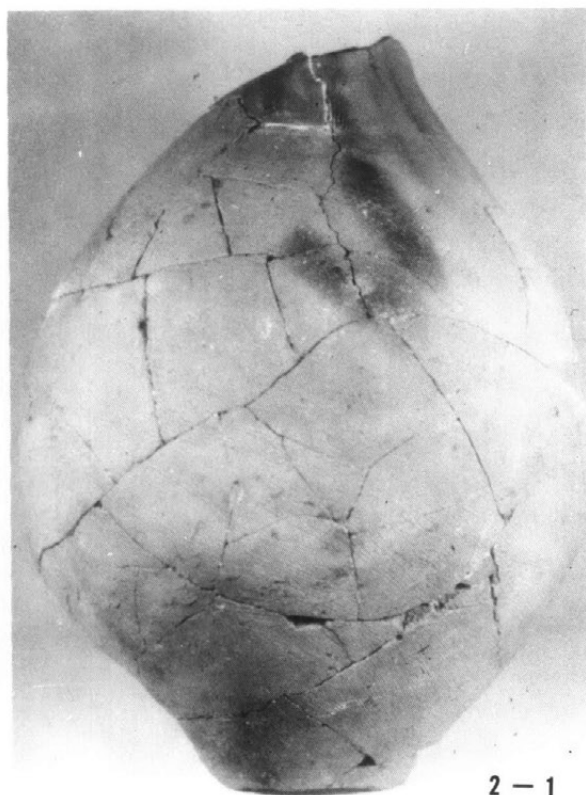
2-3

2. 用途不明の池状遺構
内出土土器

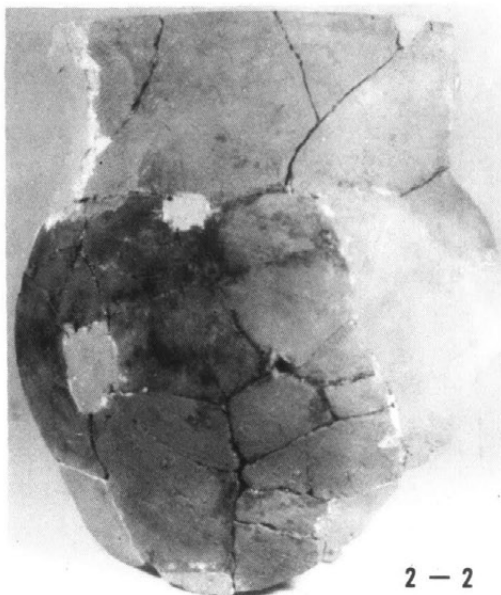
2-1.2

(1:3)

2-3 (1:2)

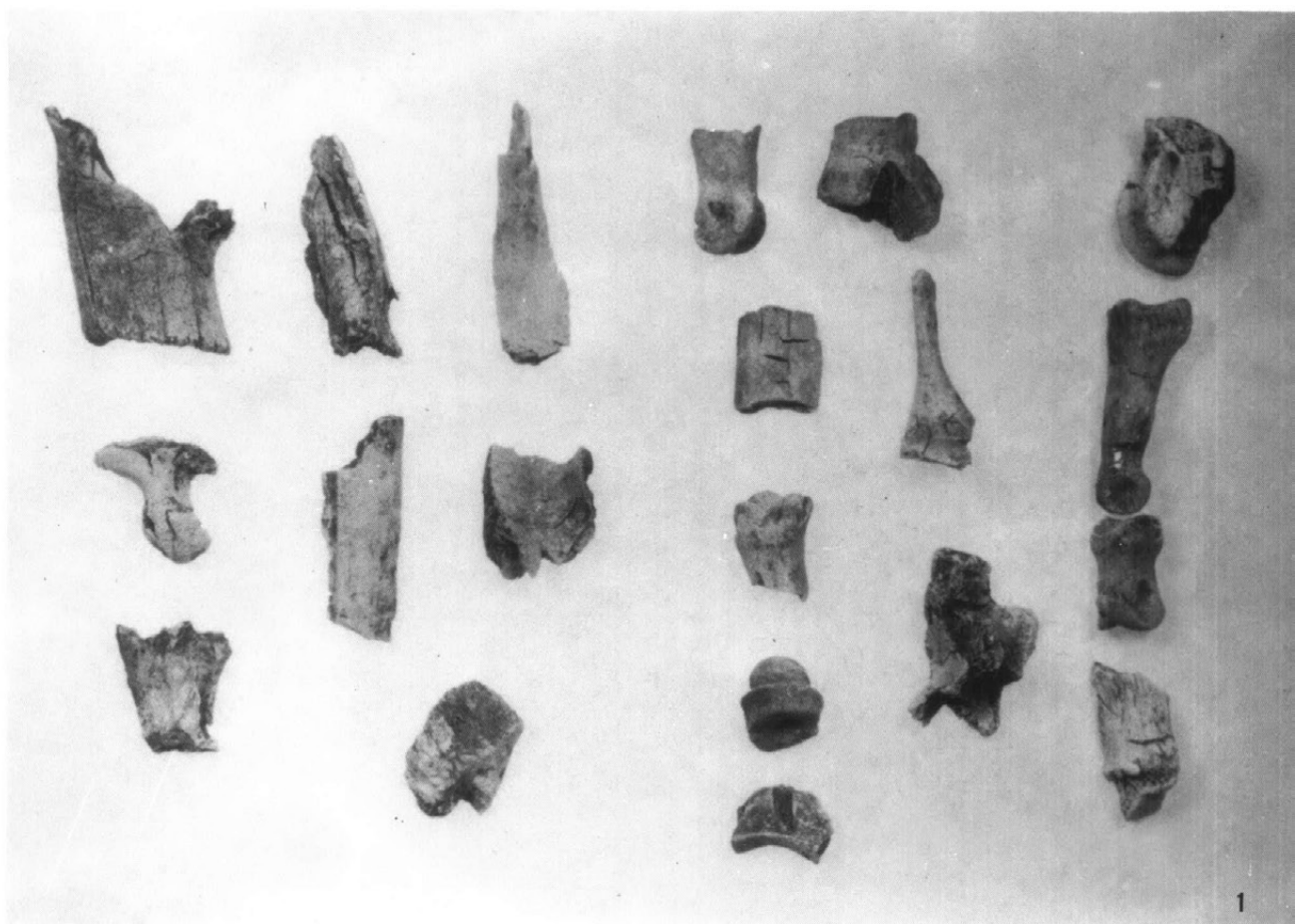


2-1



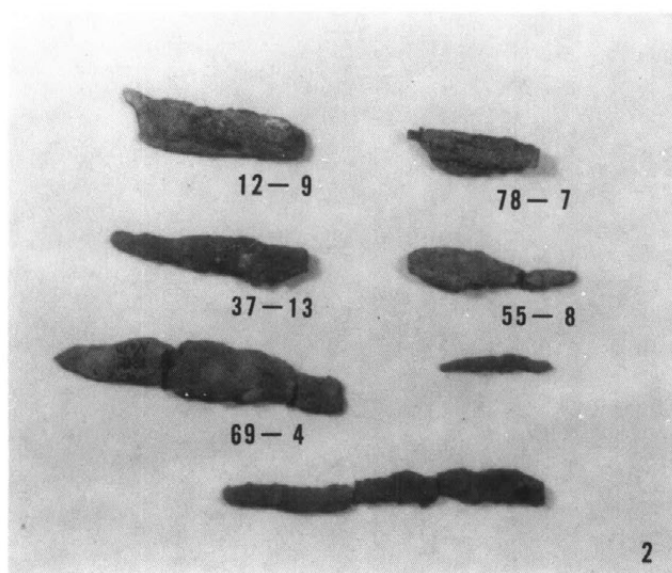
2-2

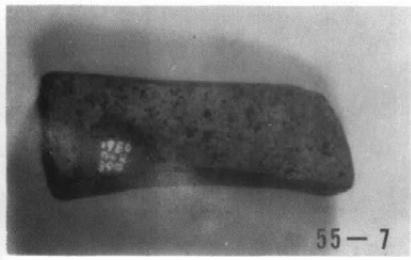
1. 14号住居址出土骨片
(1:1)



2. 堅穴住居址出土鉄器
(1:2)

- 78-7 12号住居址
- 12-9 15号住居址
- 69-4 18号住居址
- 55-8 39号住居址
- 37-13 49号住居址
- 他 45号住居址
付近

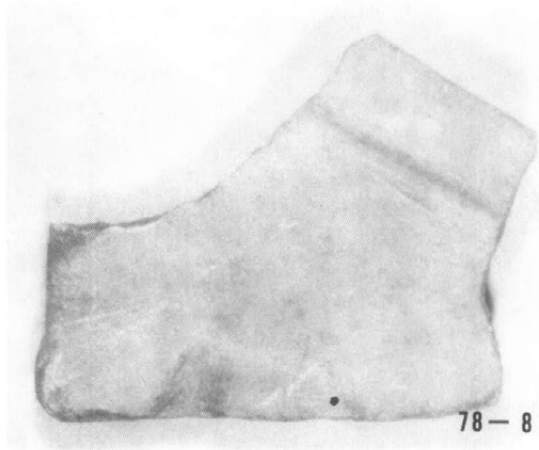




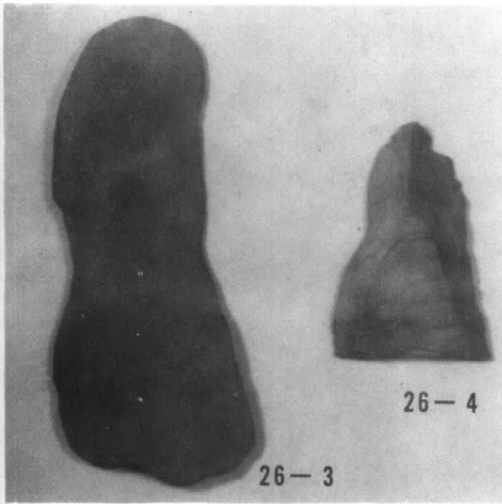
55-7



37-12



78-8



26-3

26-4



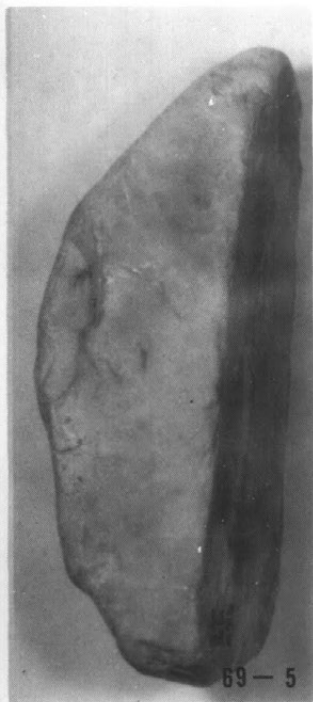
24-9



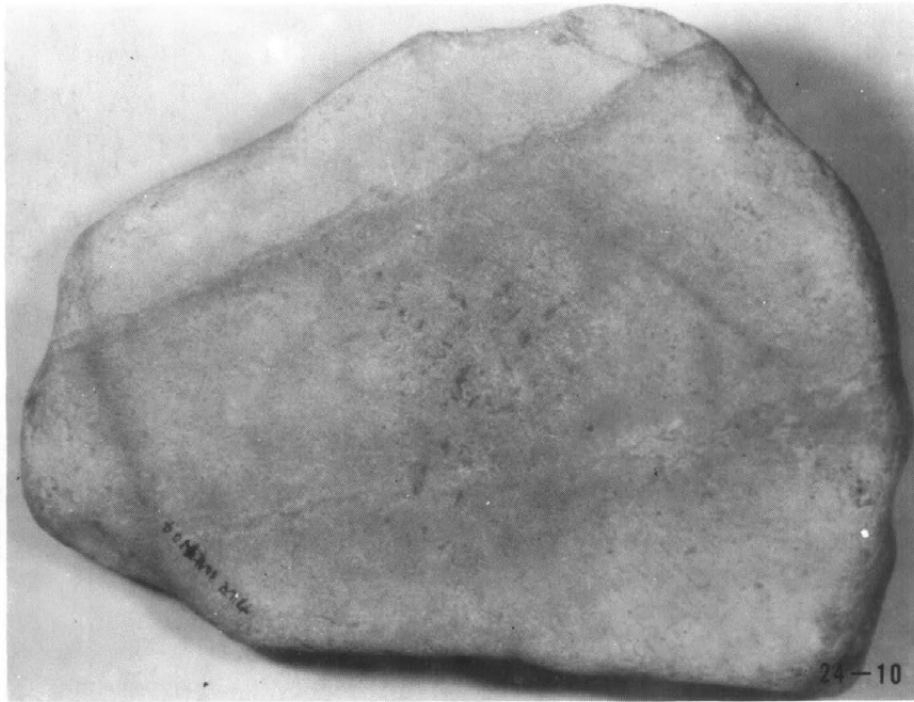
48-6



1. 堅穴住居址出土石器類他
 37-12、62-1 (1:1)
 他 (1:2)
 78-8 12号住居址 砥石
 48-6 13号住居址 磨石
 69-5 18号住居址 砥石
 24-9.10 30号住居址
 磨石、砥石
 26-3 31号住居址
 折製石斧?
 26-4 31号住居址
 スクレイパー
 55-7 39号住居址 砥石
 62-1 44号住居址 石核
 37-12.14 49号住居址
 ヒスイ玉、砥石
 他 59号住居址磨石?



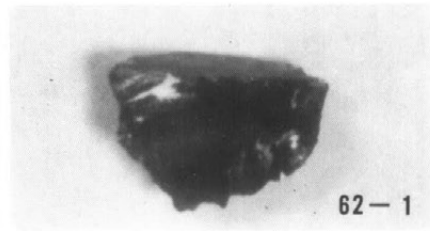
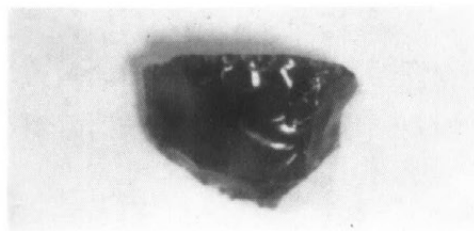
69-5



24-10



37-14



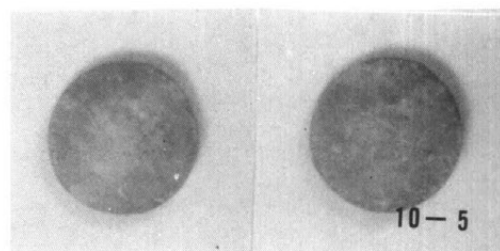
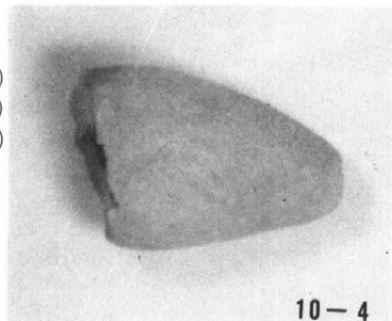
62-1

1. 発掘区域外表層
の遺物

10-1 (1:3)

10-3 (1:2)

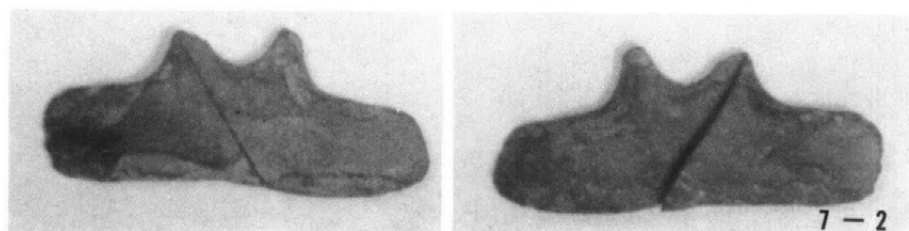
10-4.5 (1:1)



2. B地区河川址礫
内出土遺物

7-1 (1:2)

7-2 (1:1)





1. 2. トチカ原遺跡近景
(西方より)

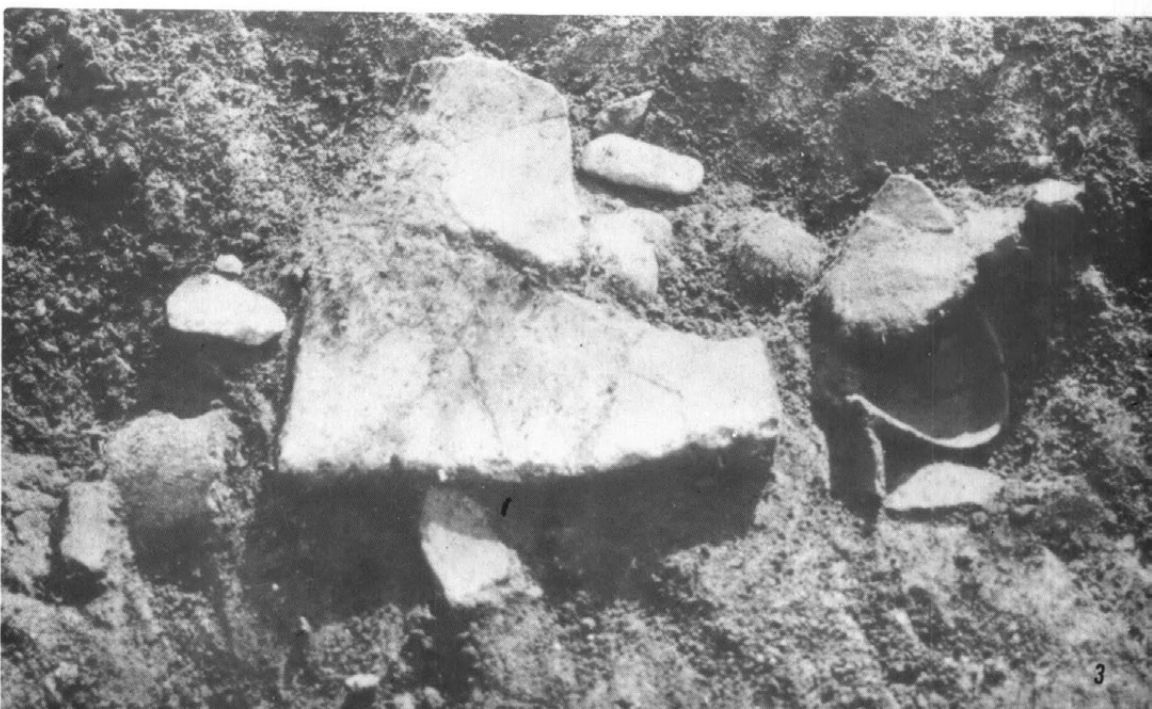


3. トチカ原遺跡堅穴住居址
(西方より)

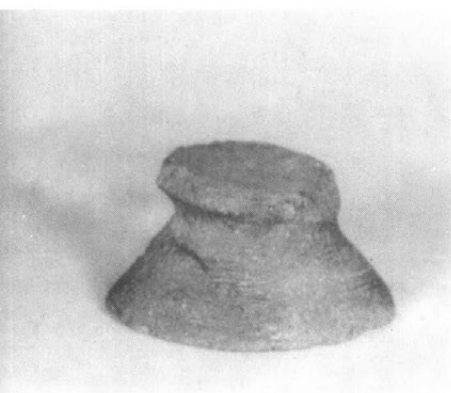
1. トチガ原遺跡堅穴住居址（北方より）



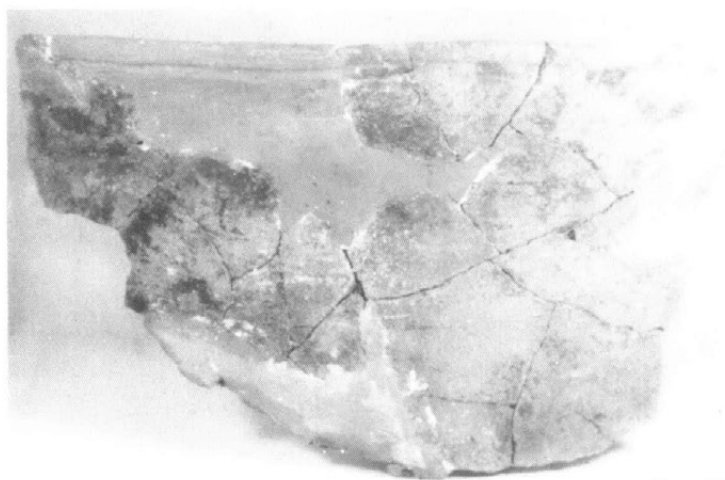
2. 3. 堅穴住居址土器出土状況



1. 堅穴住居址出土土器
3-4.1 (1:3)
3-8.9.10.11
(1:2)



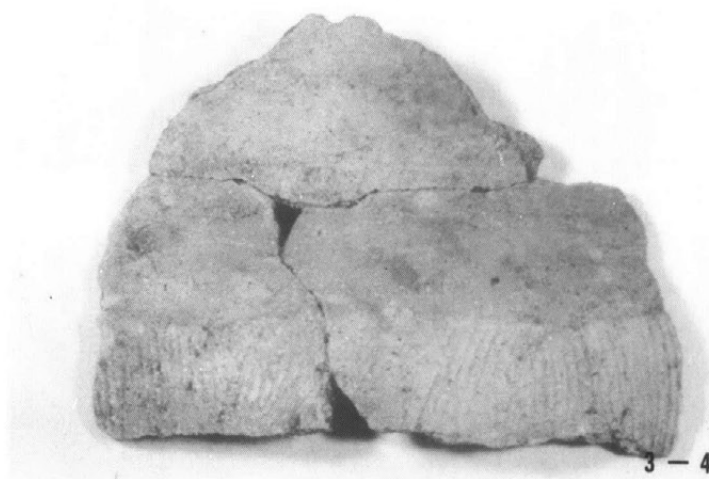
3-11



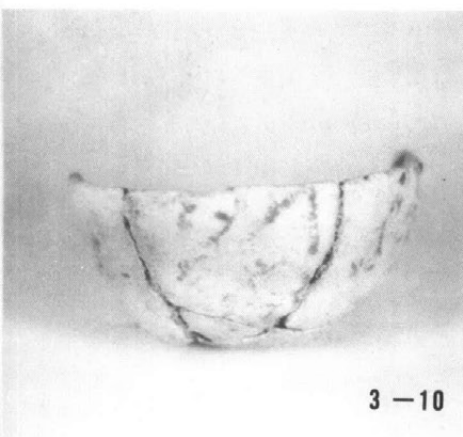
6-84



3-9



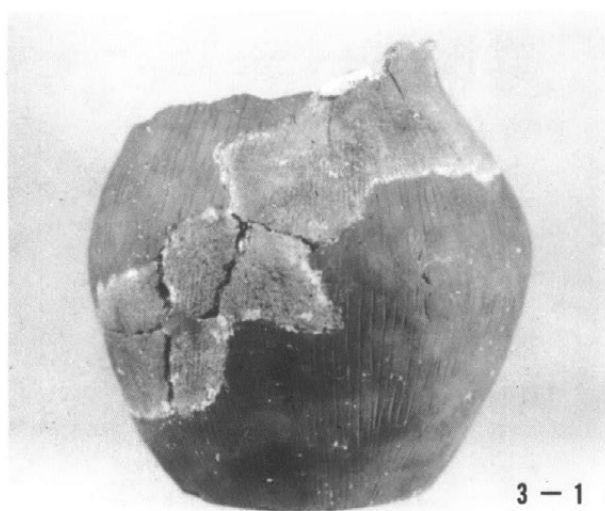
3-4



3-10

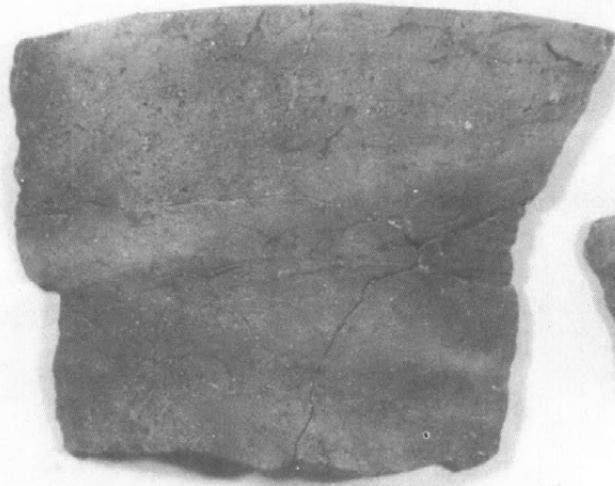


3-8

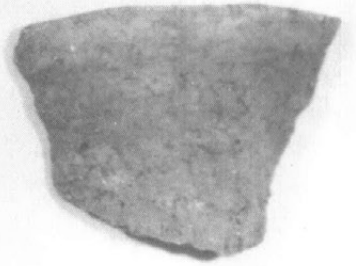


3-1

1. 2. 3.
堅穴住居址出土土器
(1:2)

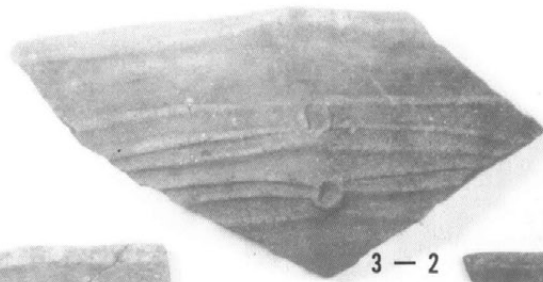


3-5

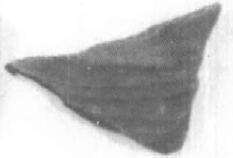
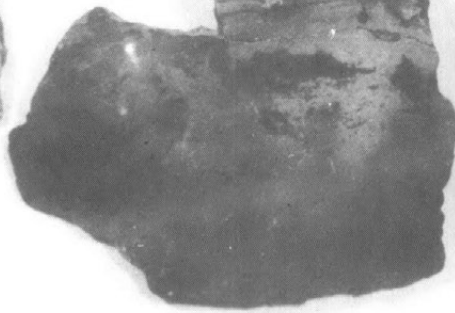
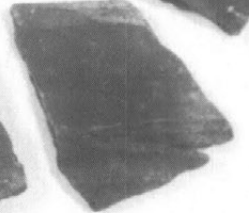


3-6

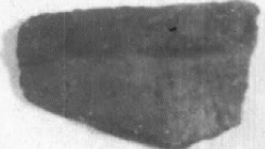
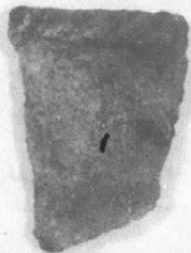
1



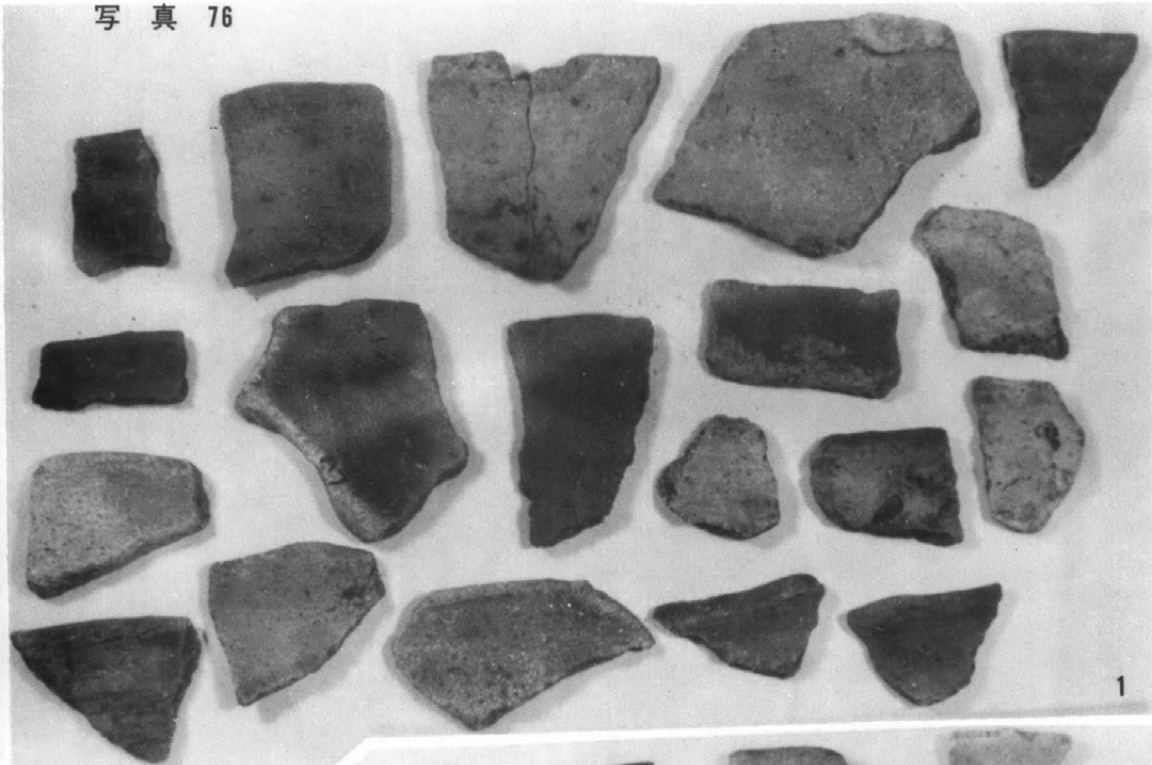
3-2



2



3



1



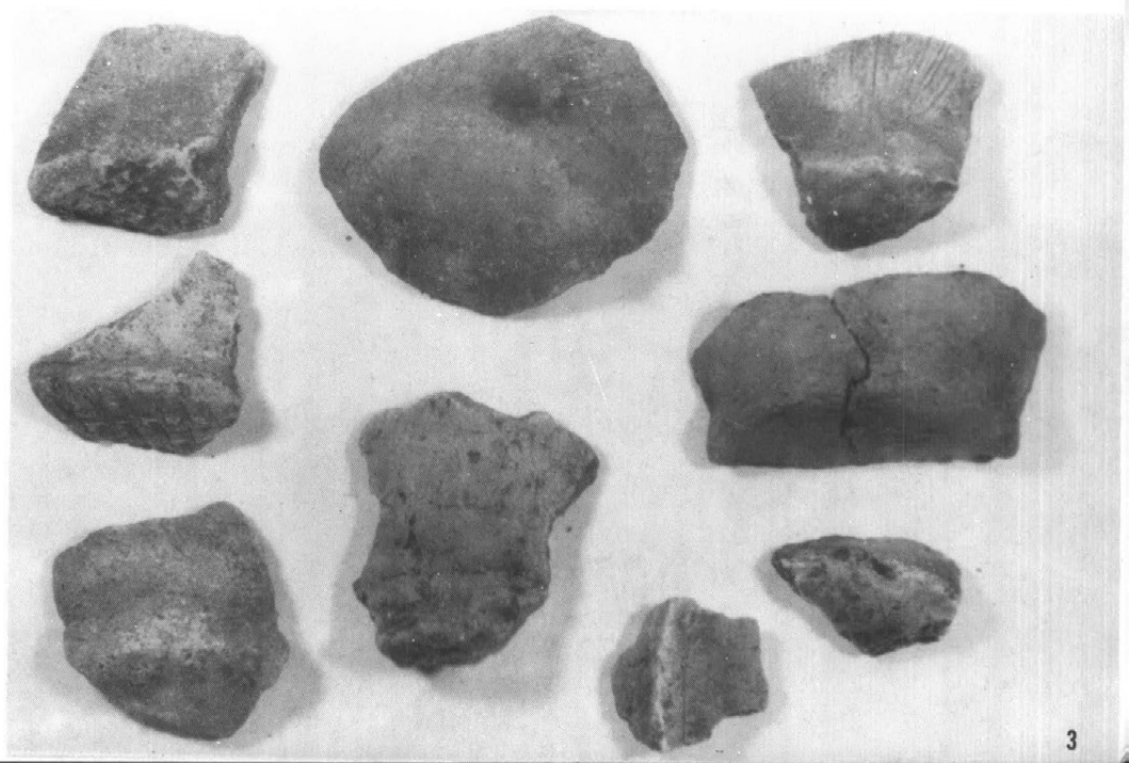
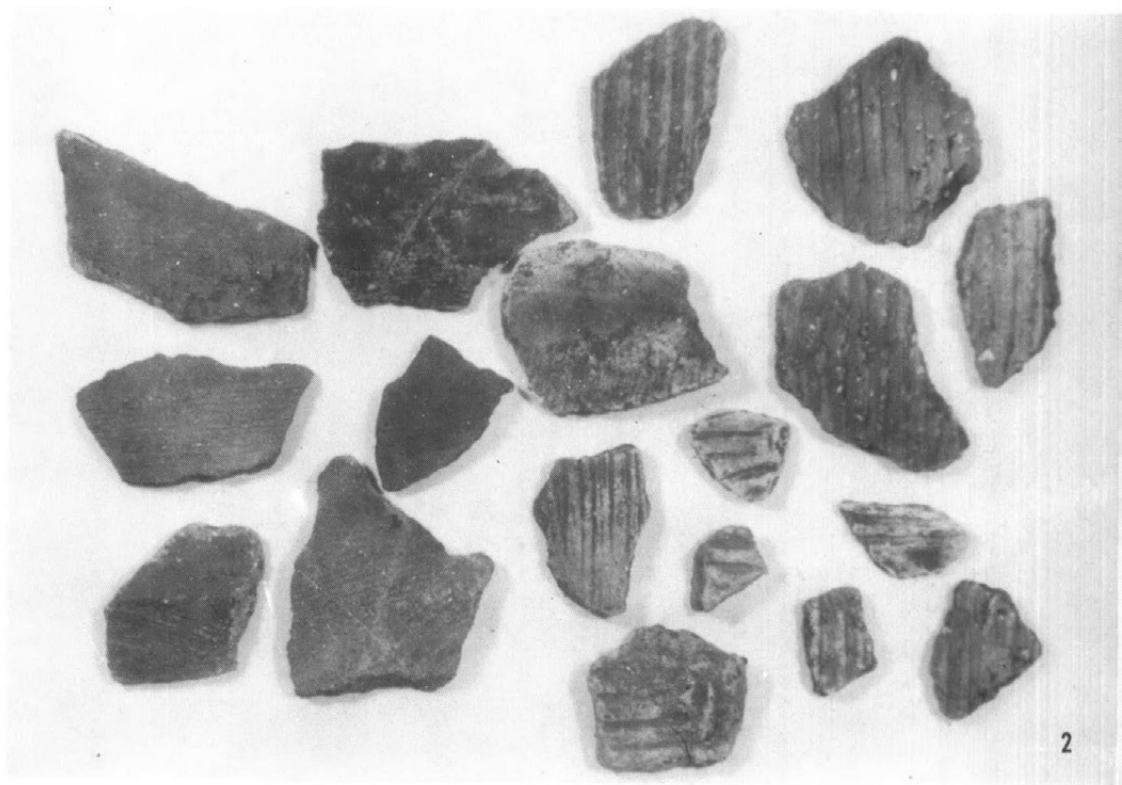
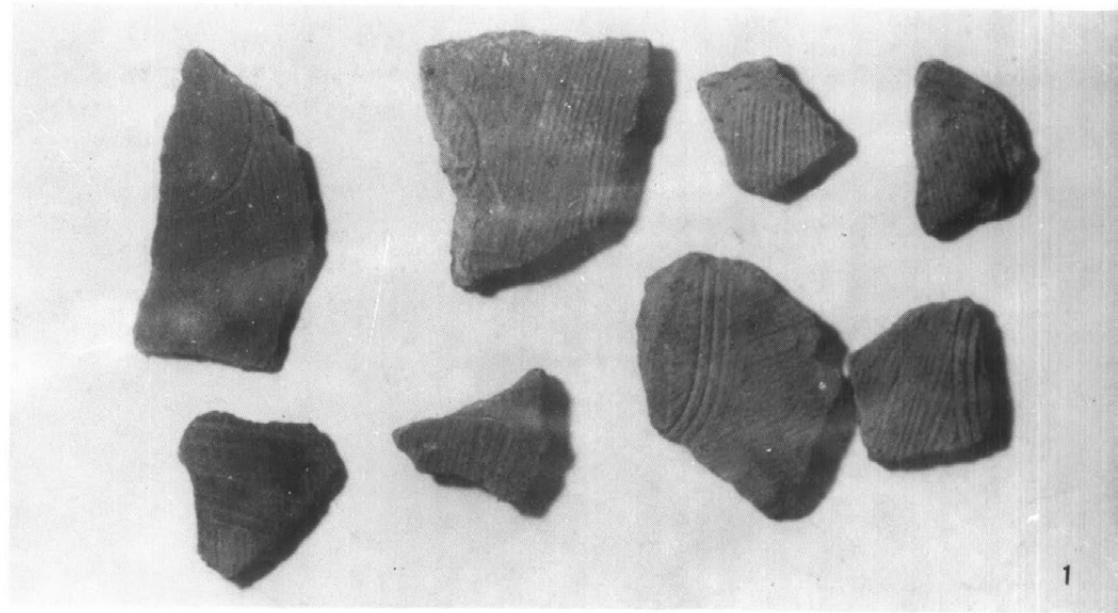
2



3

1. 2. 3.
堅穴住居址出土土器
(1:2)

1. 2. 3.
堅穴住居址出土土器

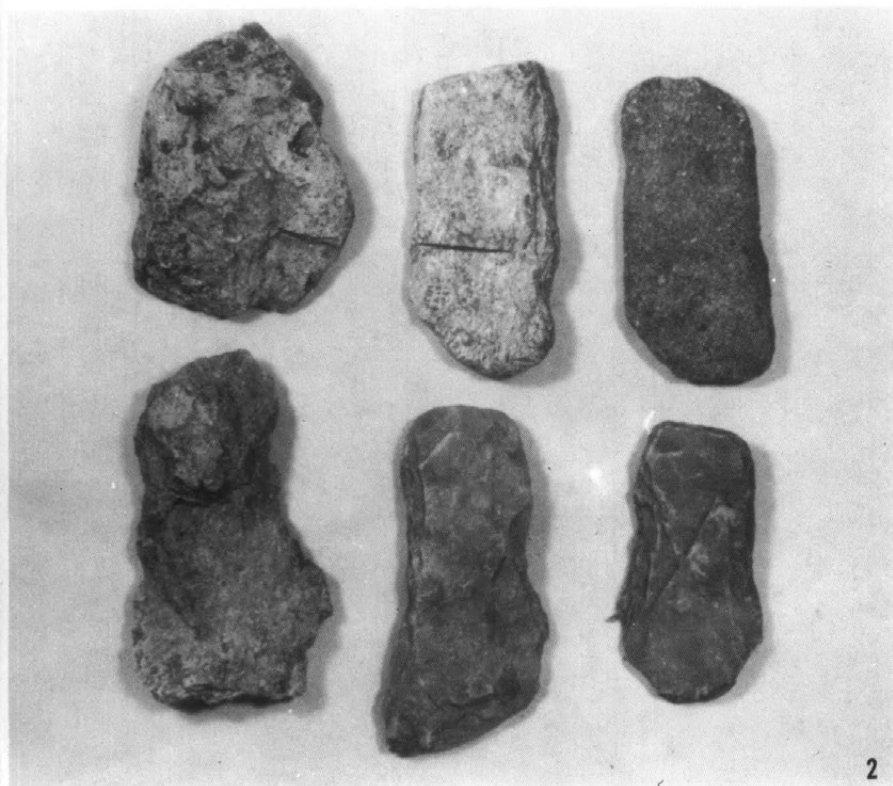


1. 堅穴住居址出土石鏃 (1:1)

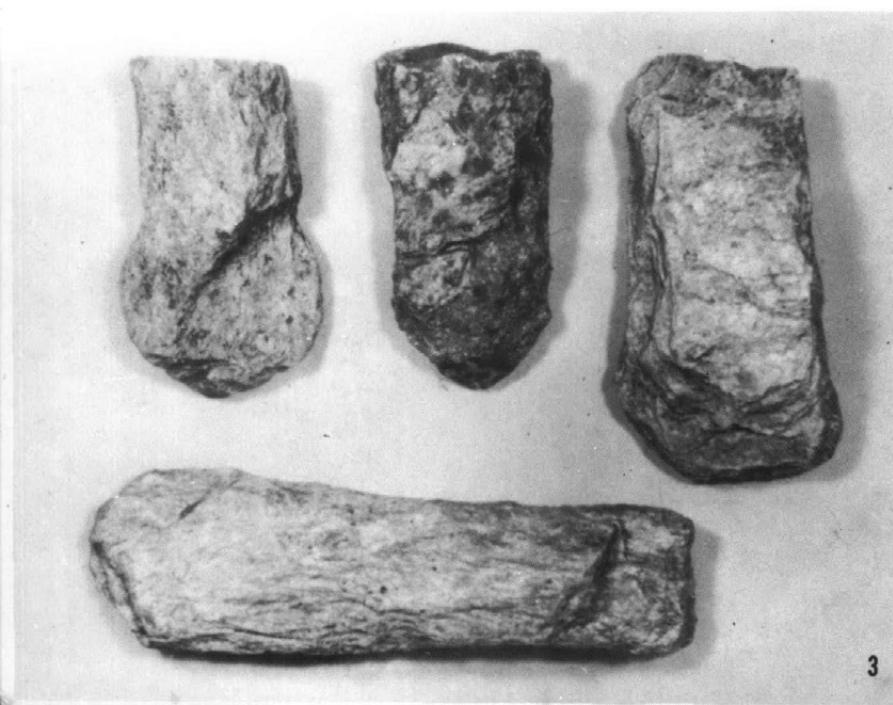


1

2. 3. 堅穴住居址出土石器類 (1:2)

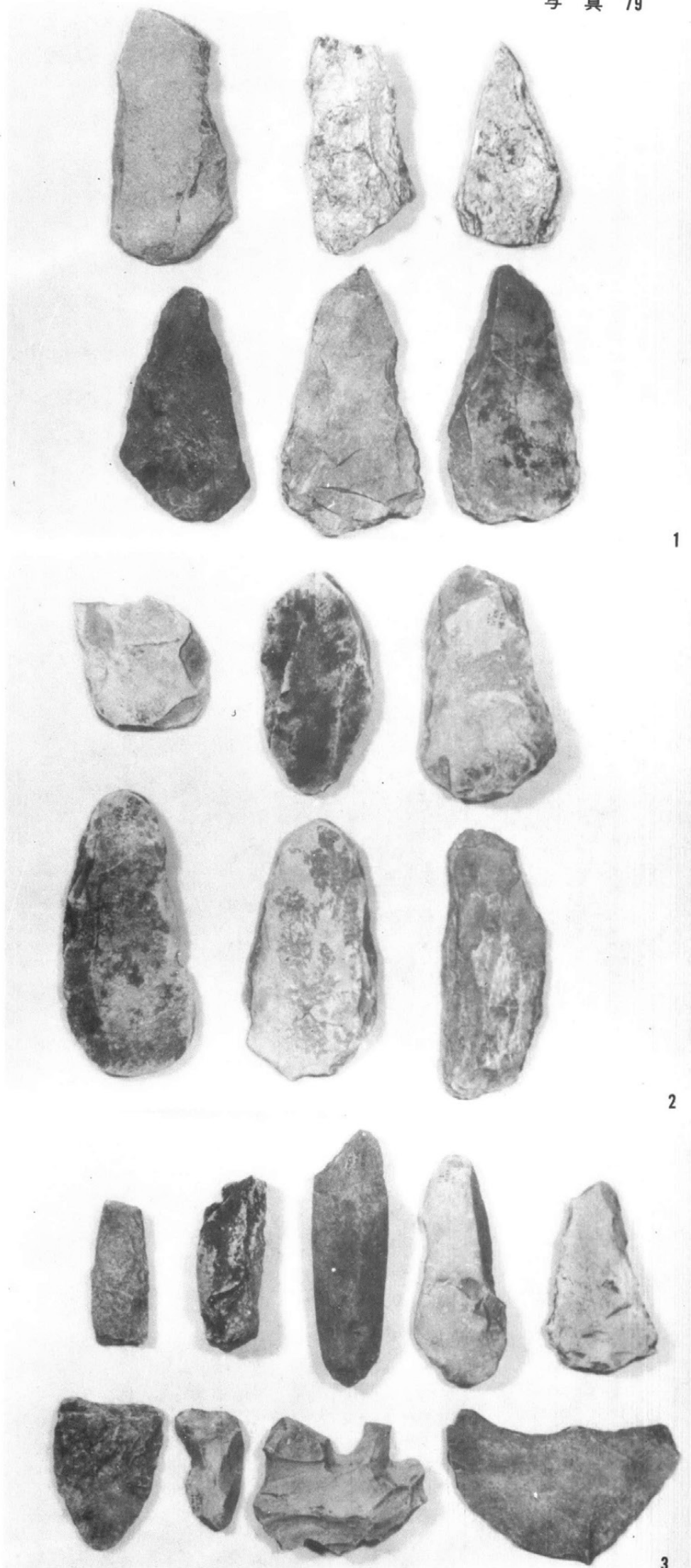


2



3

1. 2. 3.
堅穴住居址出土石器類 (1:2)



1

2

3



長野県大町市借馬遺跡緊急発掘調査報告書

借馬遺跡 II

昭和56年 3月25日 印刷

昭和56年 3月31日 発行

発行 大町市大字大町3,887
大町市教育委員会

印刷 大町市大字大町2,192
北 辰 印 刷

