



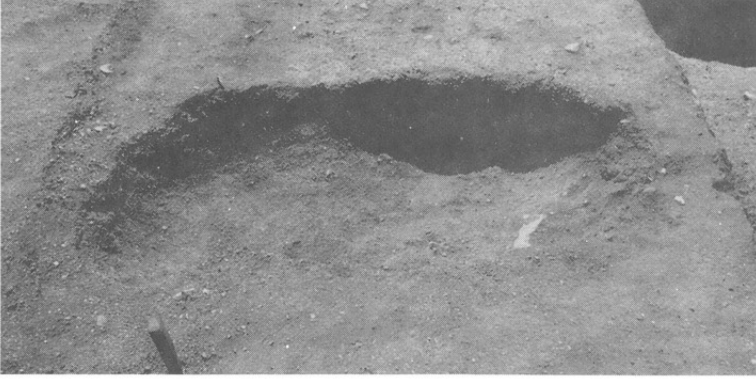
95. 1号豎穴



96. 2号豎穴



97. 3号豎穴



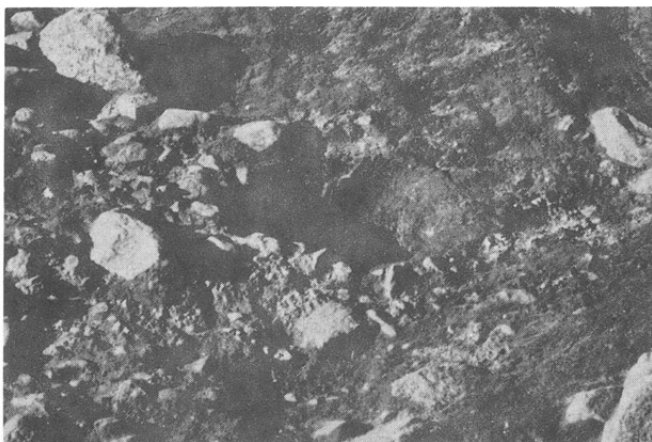
98. 1号土壙



99. 2号土壙上面



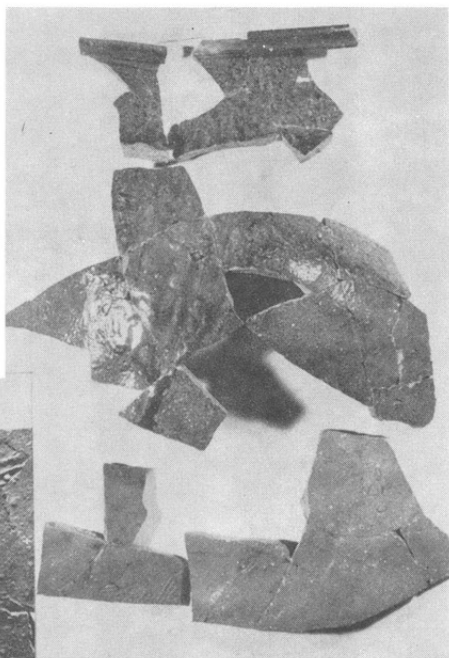
100. 4号土壙



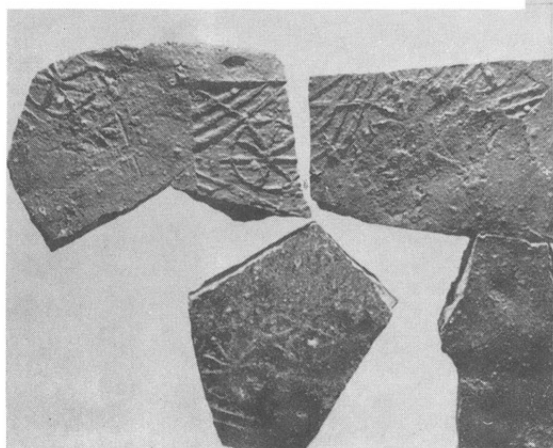
101. 5号土壙



102. 5号土壙と3号路址



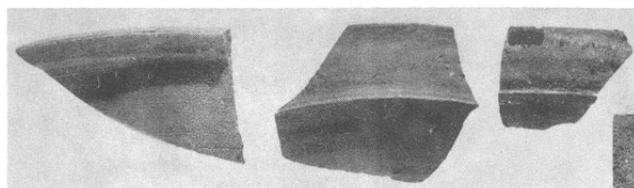
103. 常滑壺



104. 胴部施文



105. 1号溝址 北東から

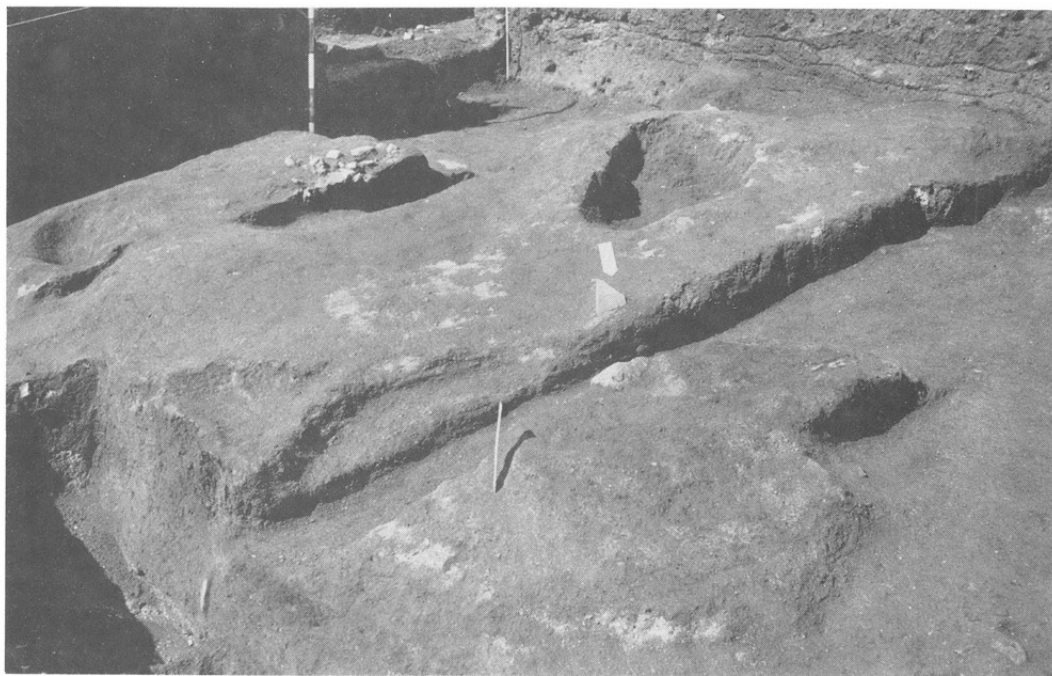


106. 溝址出土土器

107. 平鎌出土状況



108. 1号集石 東から



109. 炭層1の面（土壌と焼土）



←炭層1

110. 炭層1の堆積状況

焼土→

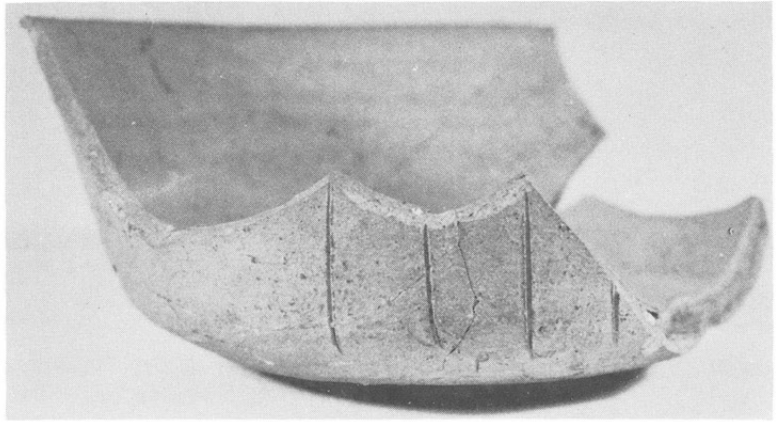
炭層2→



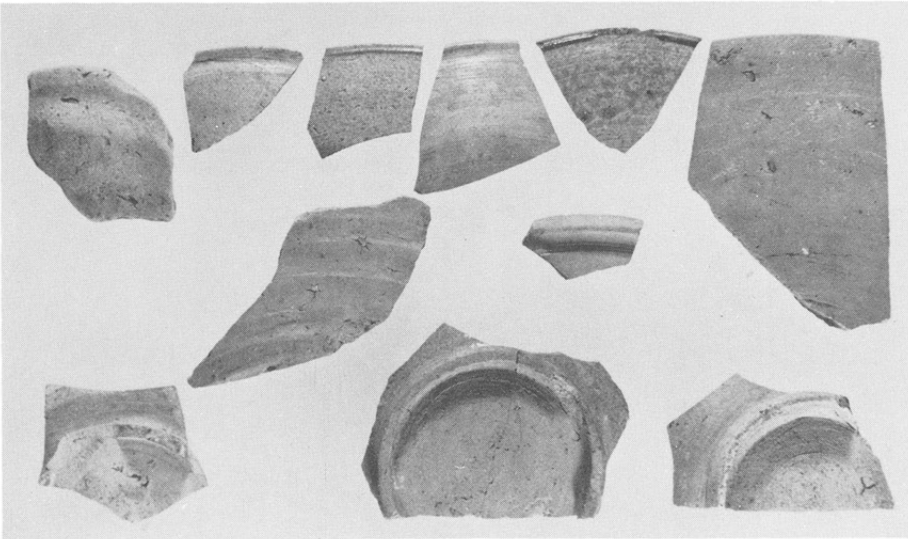
111. 焼土と炭層2の堆積状況



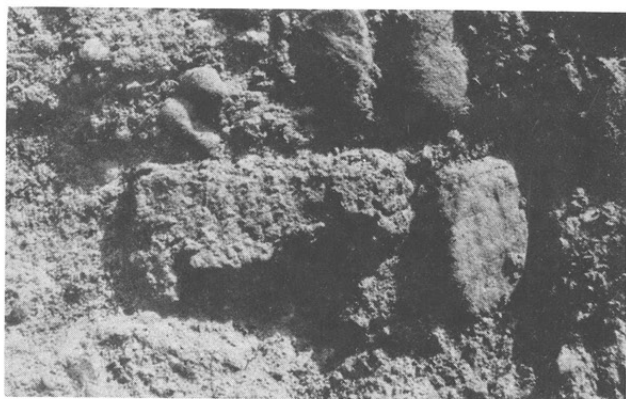
112. 須恵器



113. 須恵器の沈刻



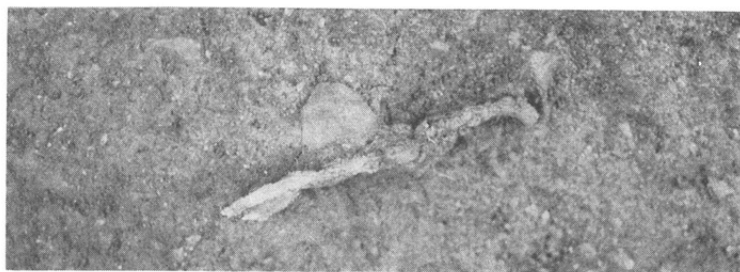
114. 須恵器・灰釉陶器



115. 割斧



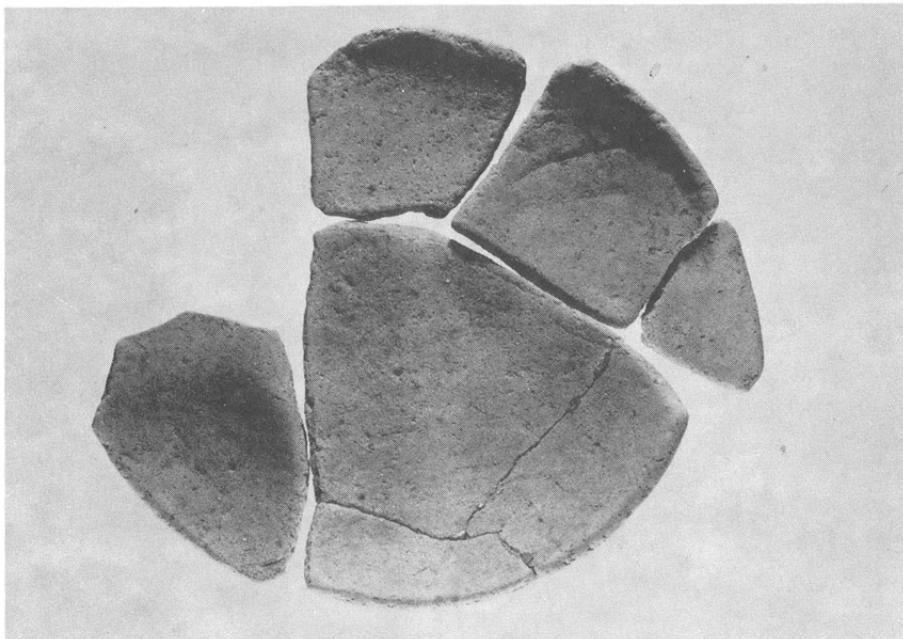
116. 鏃



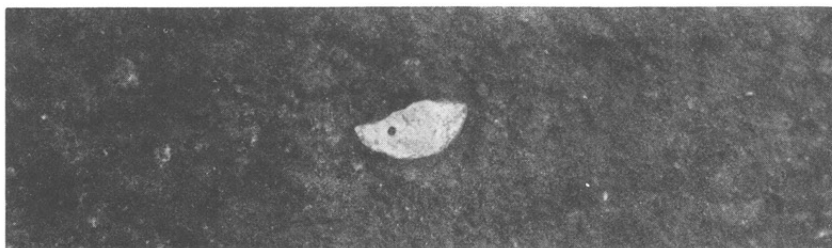
117. 棒狀製品



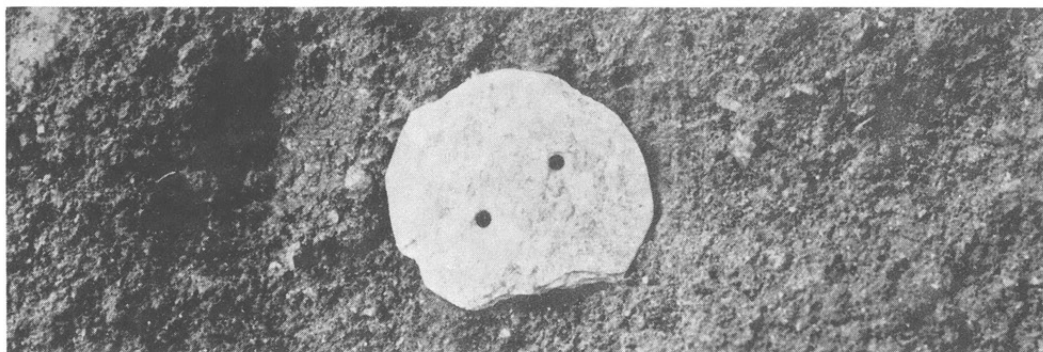
118. 環狀製品



119. 土師器

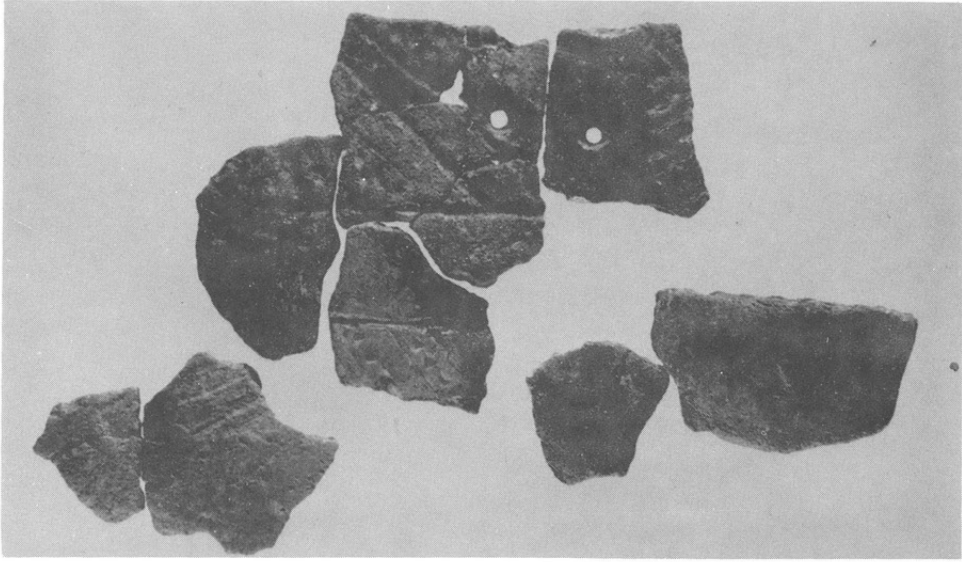


120. 円板形模造品

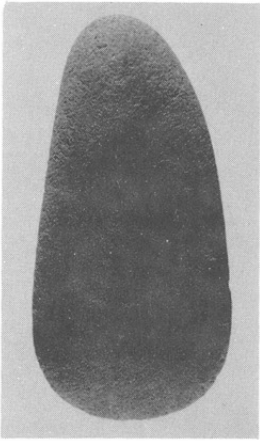


121. 円板形模造品

第36図 其の他の出土遺物(1)縄文式土器



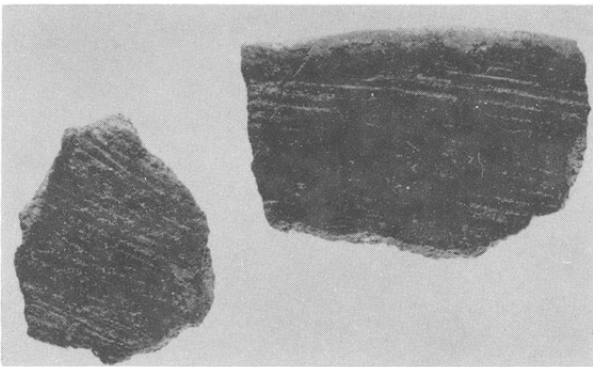
122. d 地区Ⅳ層



123
d 地区Ⅱ層



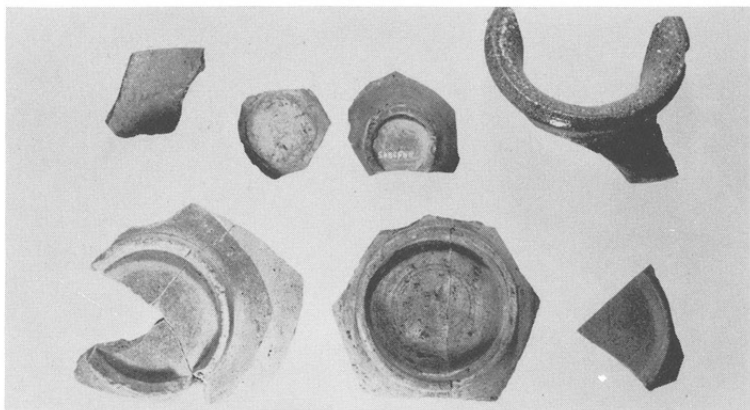
124
d 地区Ⅳ層



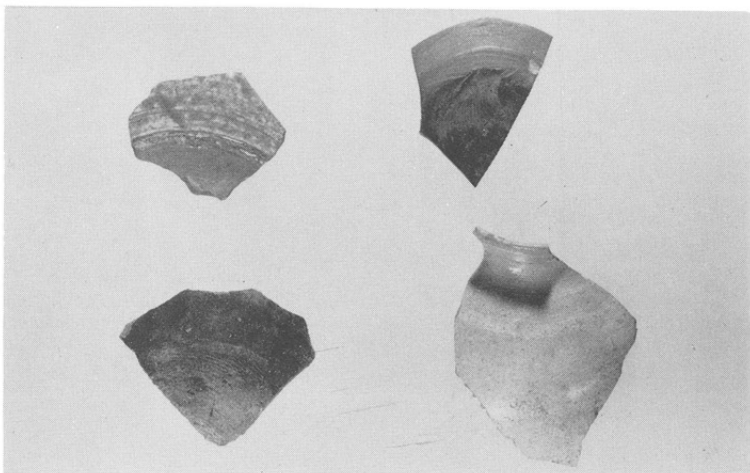
125. b 地区Ⅱ層



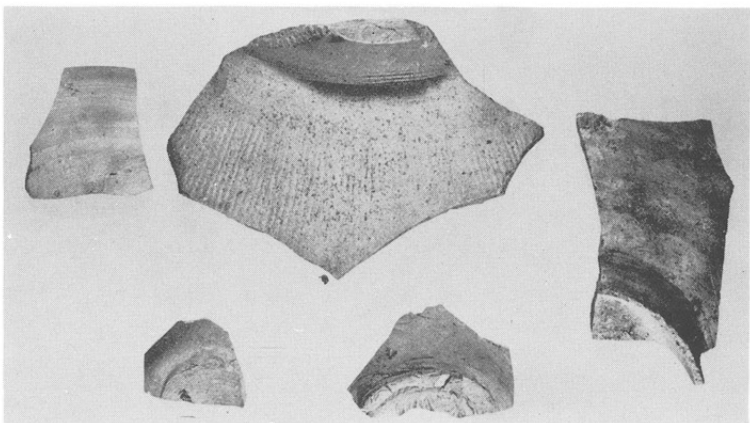
126. 出土状況



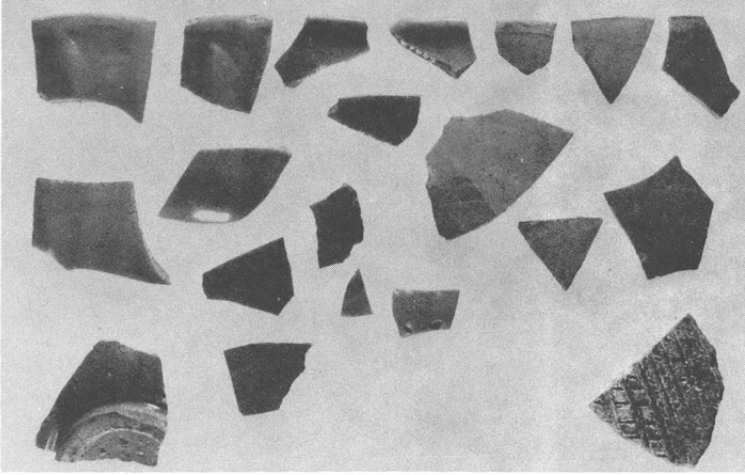
127. III層の土器



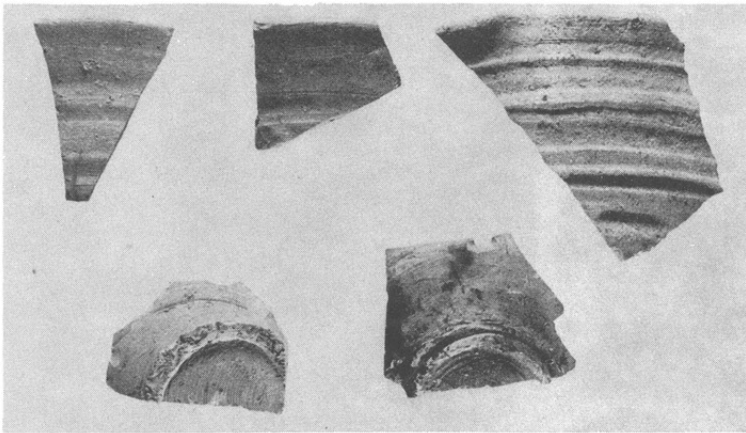
128. III層の土器



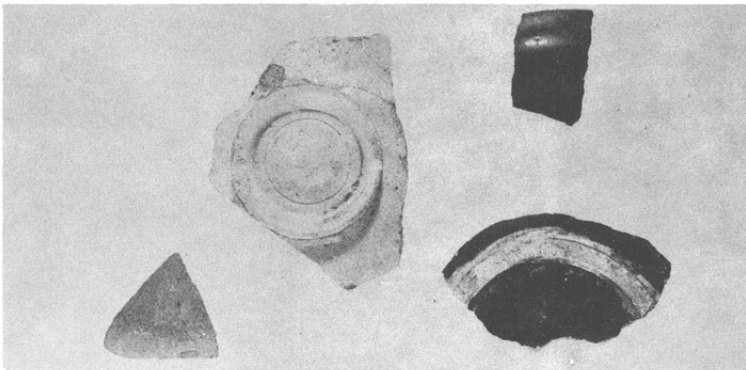
129. II層の土器



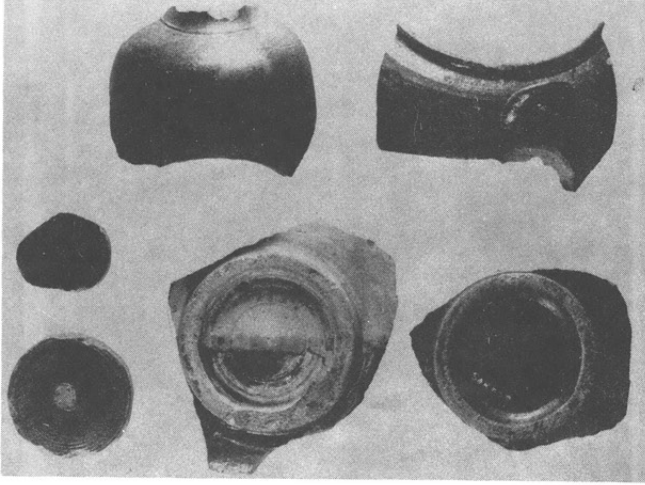
130. 青磁・オロシ皿



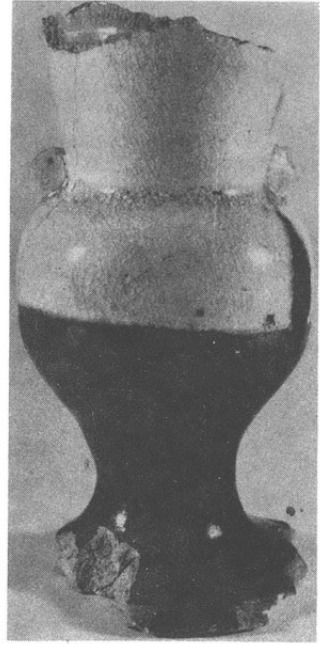
131. 山茶椀



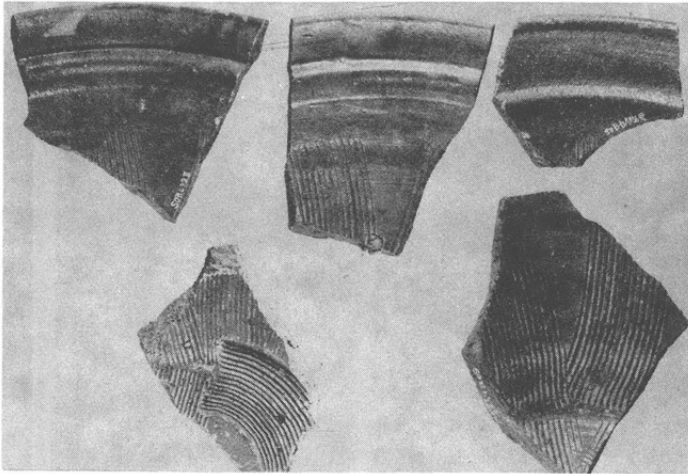
132. 天目椀



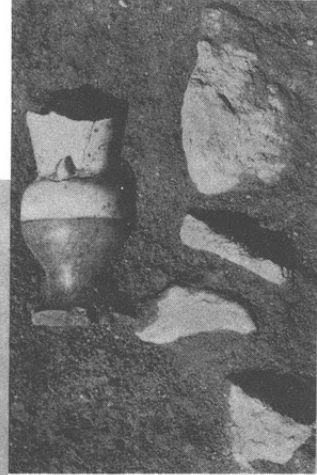
133. b 地区



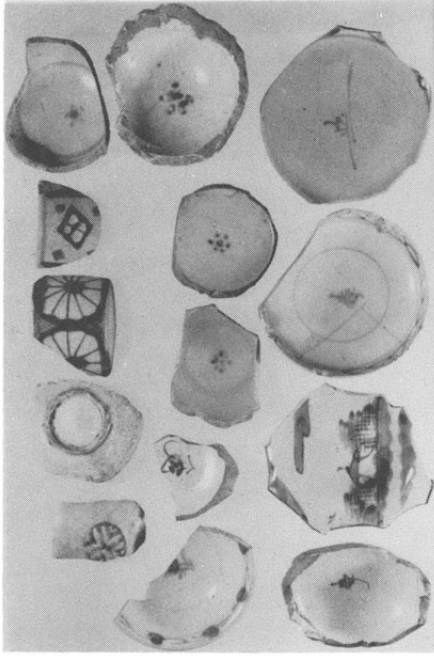
134. 仏花瓶



136. b 地区 摺鉢



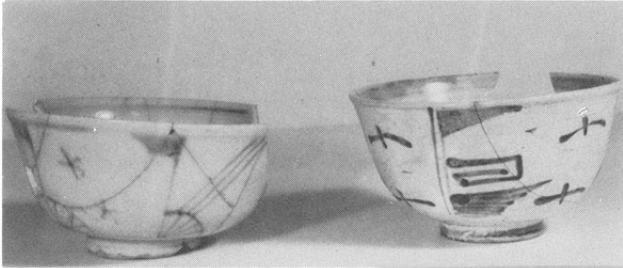
135. 出土状況



137. a 地区



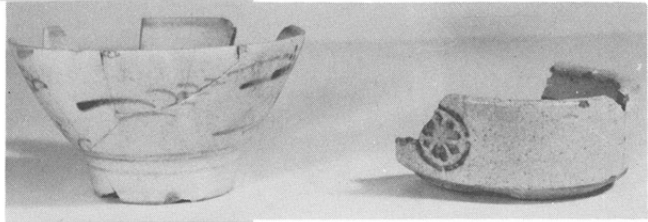
138. b 地区



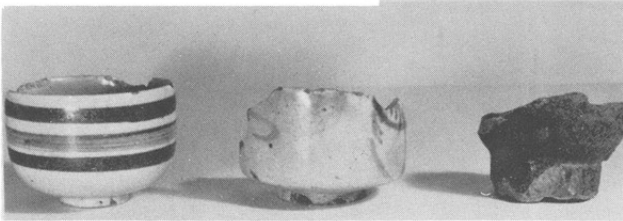
139. 茶 碗



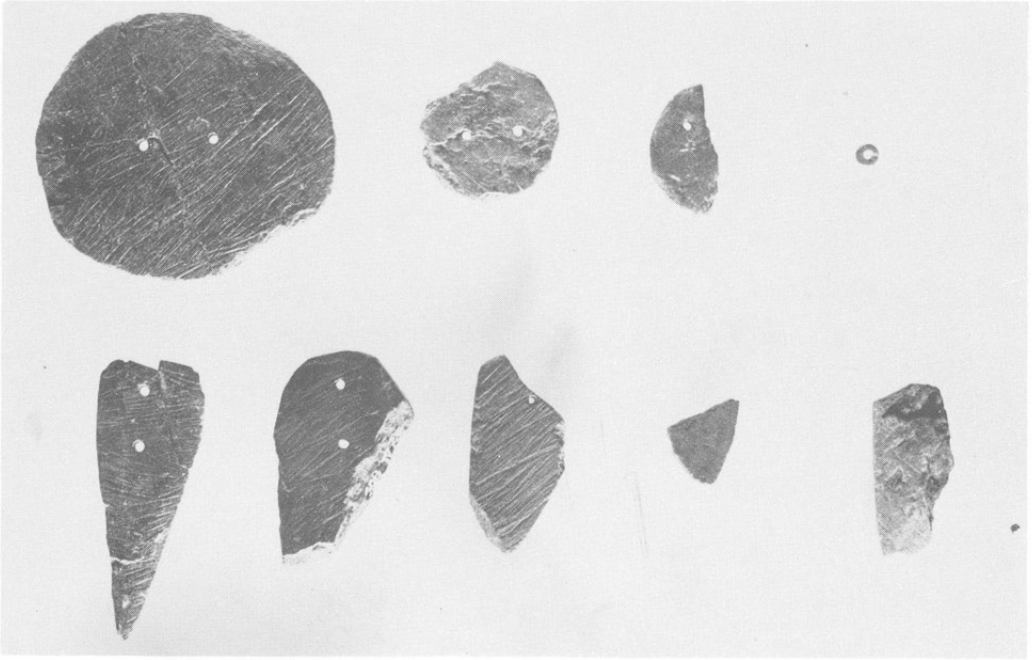
140. 茶 碗



141. 茶碗 鉢



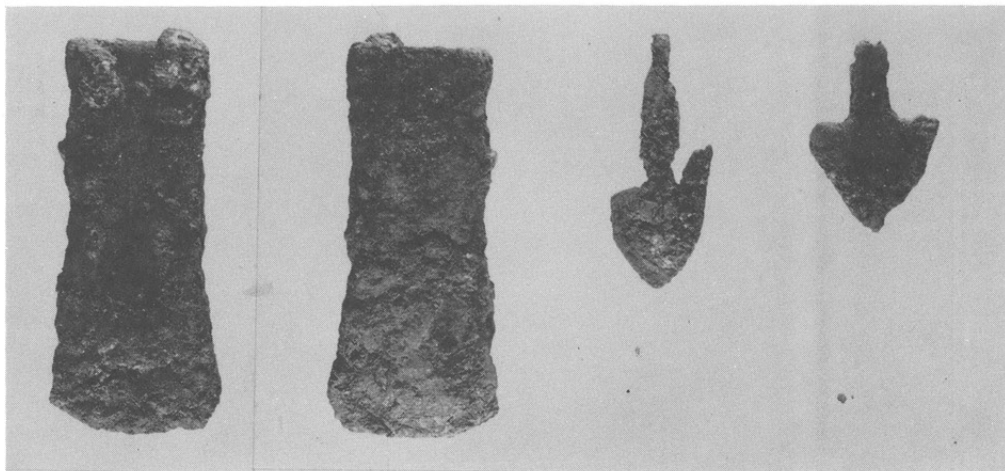
142. 茶 碗



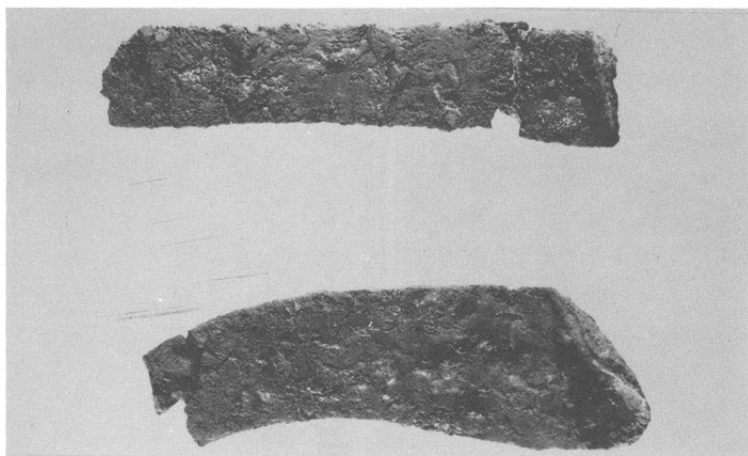
143. B地域出土



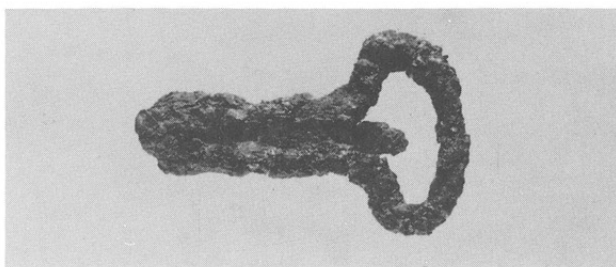
144. A地域出土



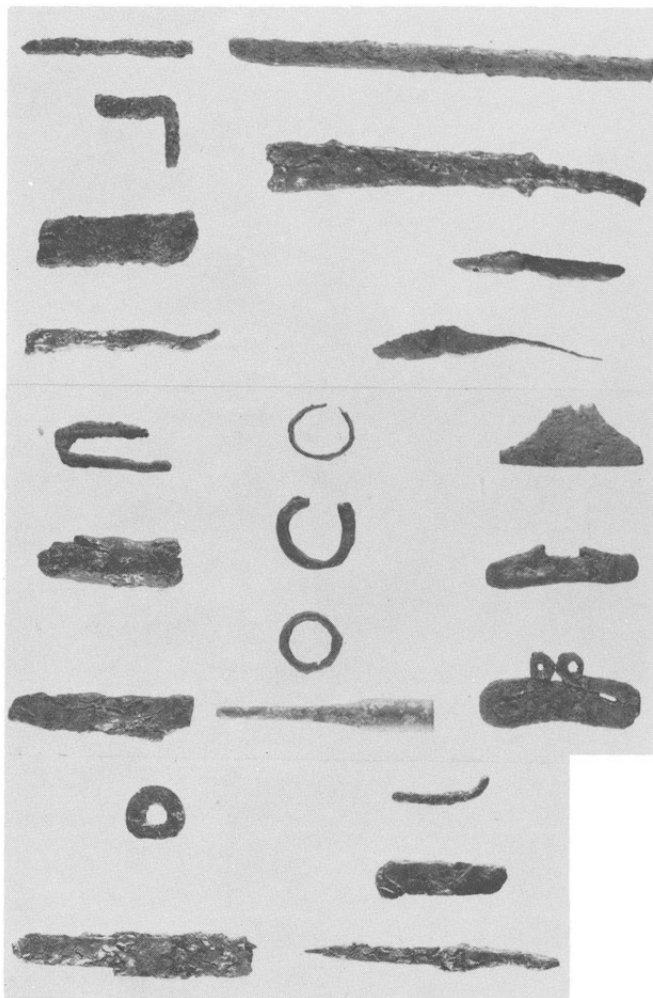
145. 割斧と鏃



146. 平 鎌

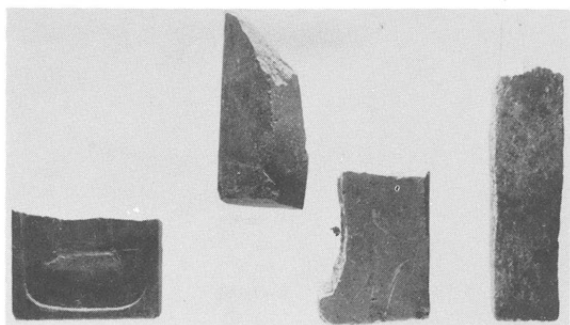


147. 環状製品

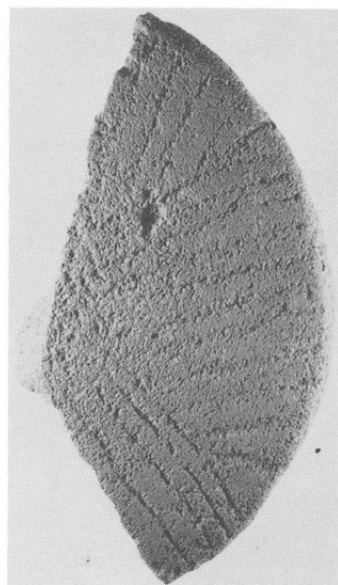


148. 各種金属製品

149
寛永通宝



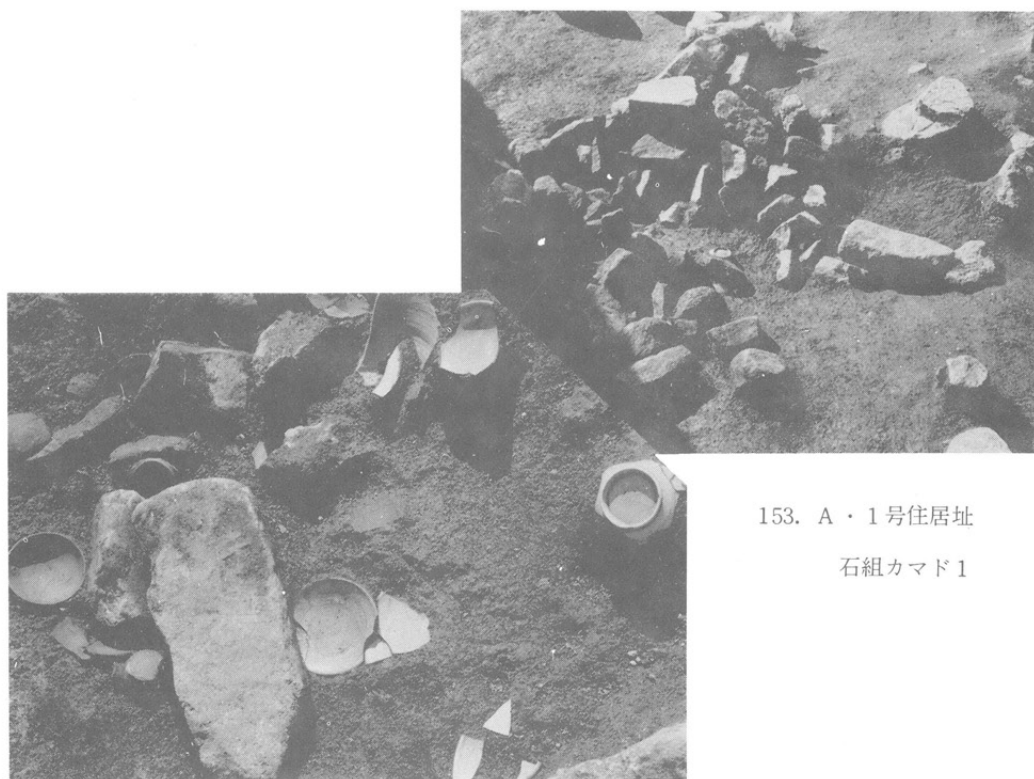
150. 硯・砥石



151. 石白



152. 石製模造品出土地 南から



153. A・1号住居址
石組カマド1

154. カマド付近遺物出土状況



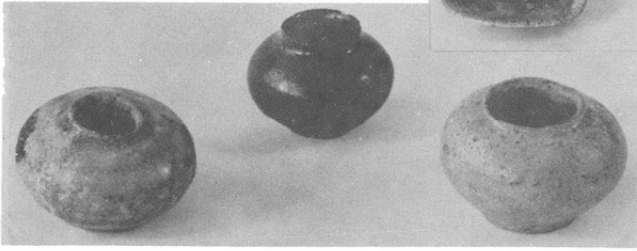
155. 柱穴群2 西から



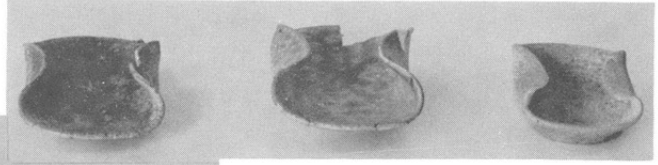
156. 配石1



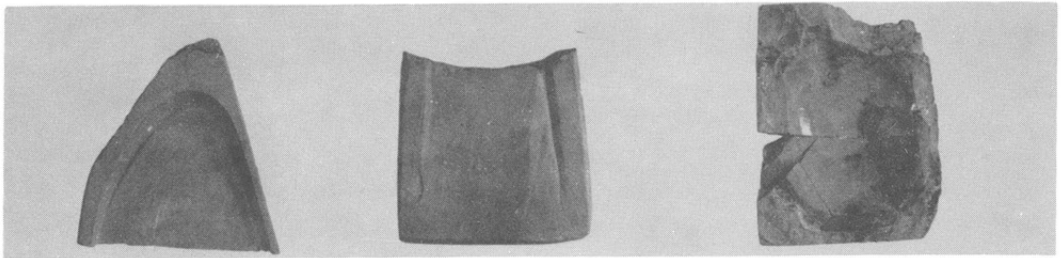
157 . 炭層4



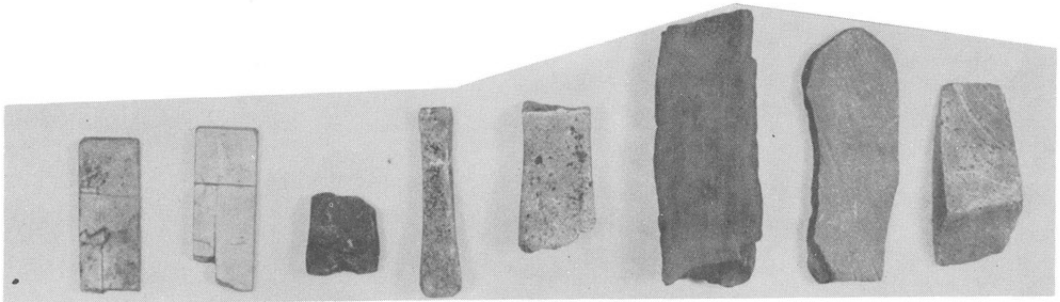
159. 合子



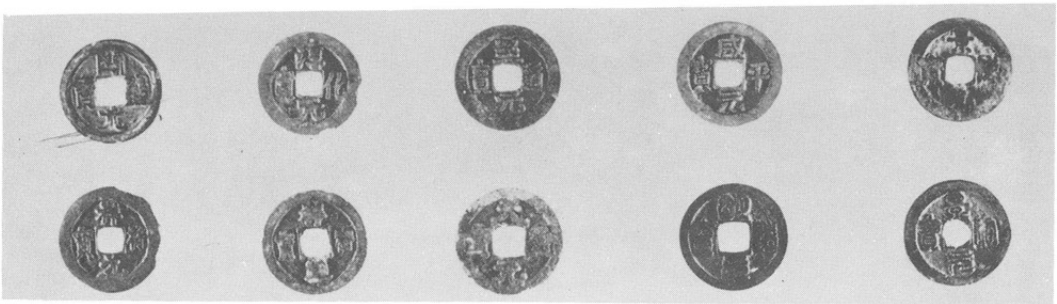
158. 耳皿



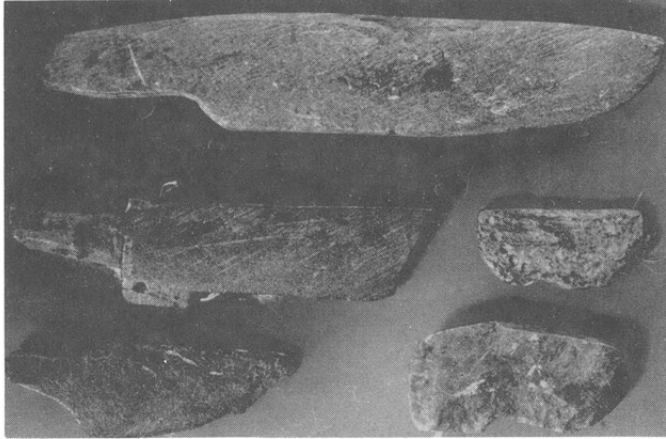
160. 硯



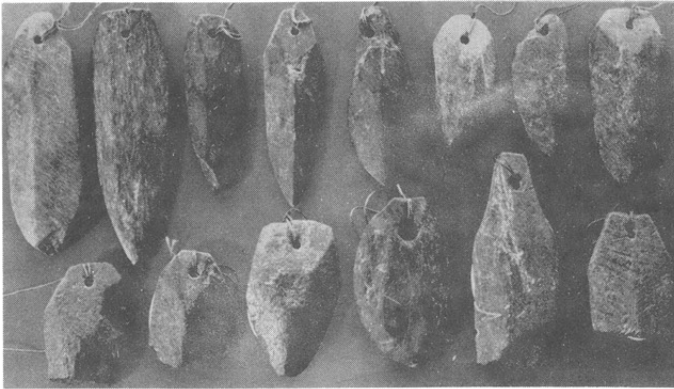
161. 砥石



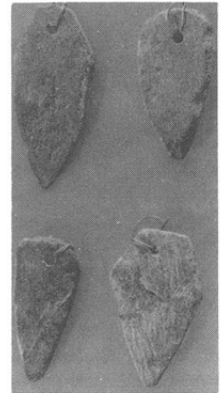
162. 渡来古銭



163. 刀子



164. 劍形



166. 劍形



165. 劍形



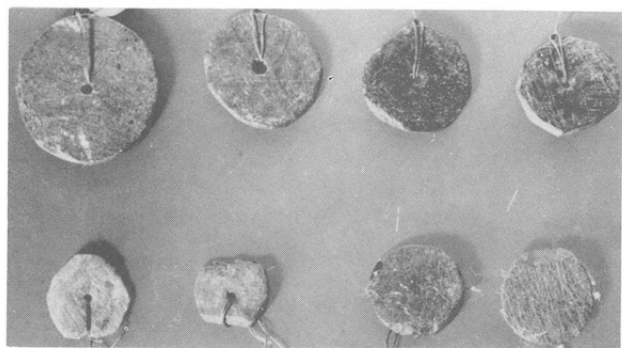
167. 劍形



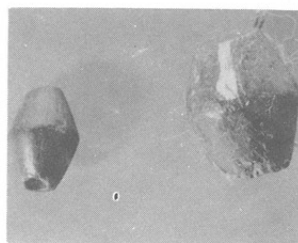
168. 双孔円板



169. 鏡



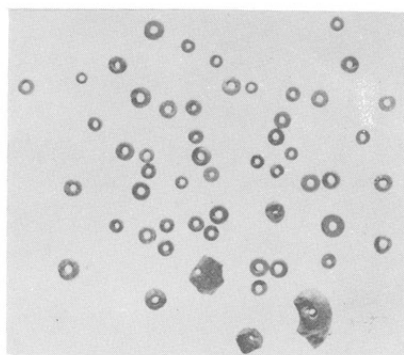
170. 単孔円板



172. なつめ玉

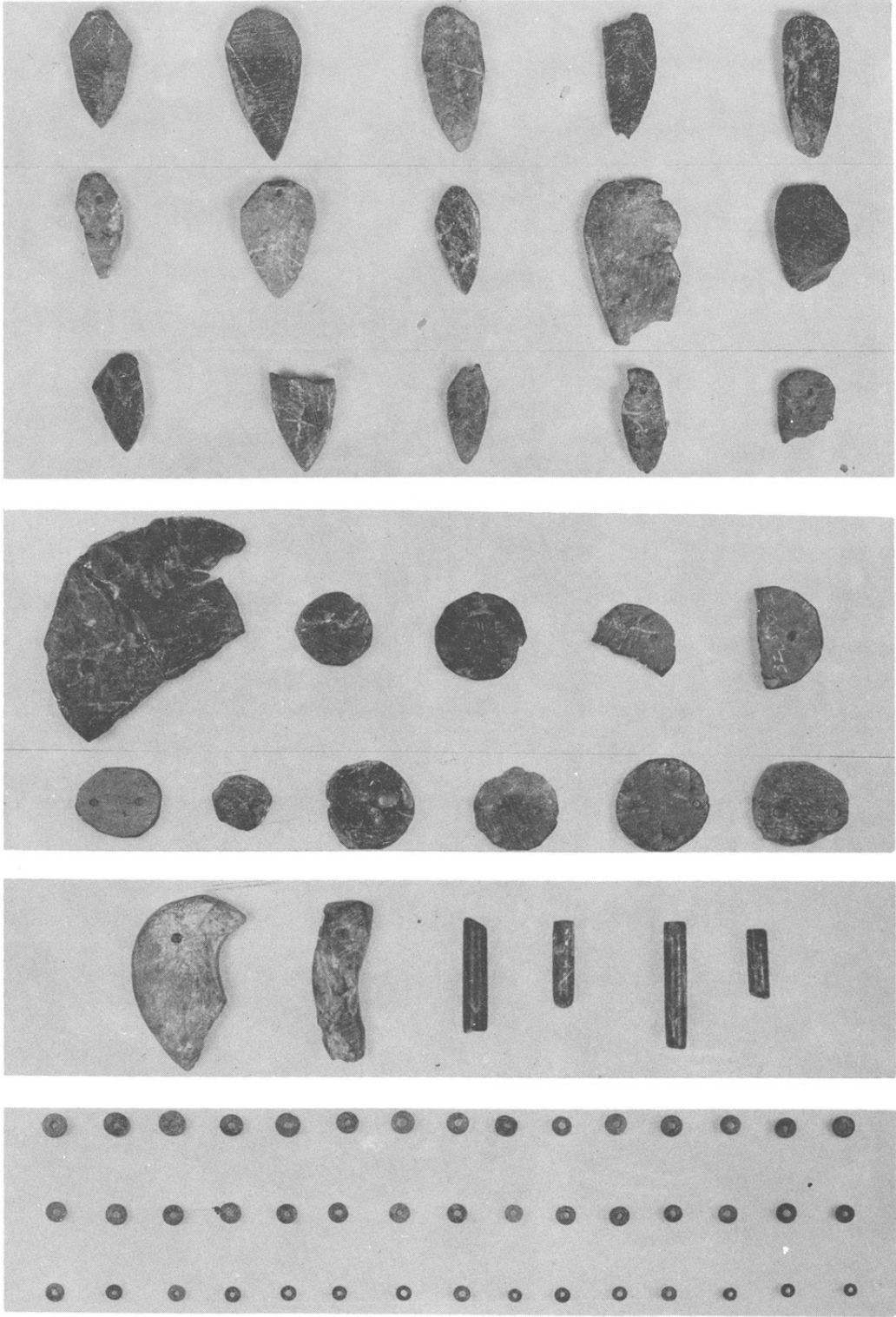


171. 勾玉



173. 白玉

第49図 石製模造品（阿智村中原出土）



174. 下伊那郡阿智村駒場中原出土（原治幸氏所蔵）



175. 調査団



176. 一志茂樹先生



177. 教育次長・文化課長・飯田教育事務所長



178. 公団名古屋建設局長等



179. 県出納次長

長野県中央道埋蔵文化財包蔵地発掘調査報告書

— 下伊那郡阿智村斜坑広場その2 —

昭和48年度

昭和49年3月15日印刷

昭和49年3月20日発行

発行者 日本道路公団名古屋建設局

長野県教育委員会

印刷所 東筑摩郡明科町中川手3260

こまくさ写植印刷株式会社

〔非売品〕

