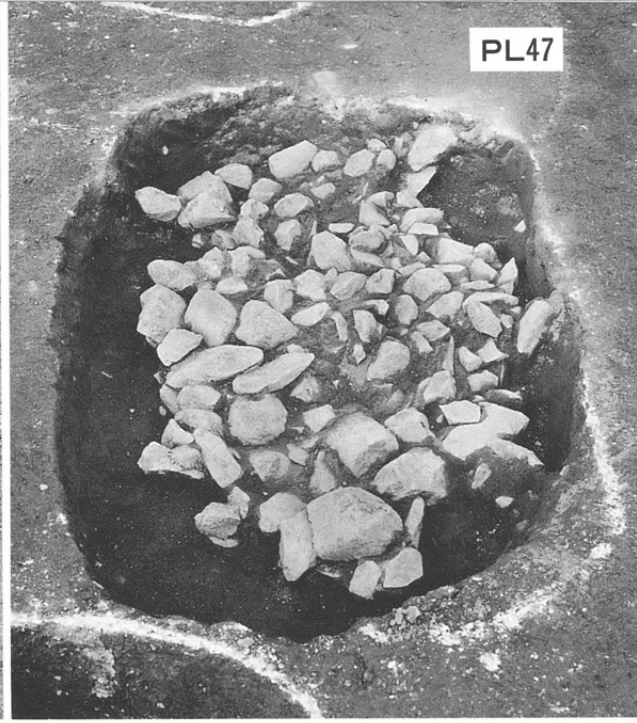


中世遺構(北部)

左 SK2071坑底部  
石敷(南より)  
右 SK2138(南より)



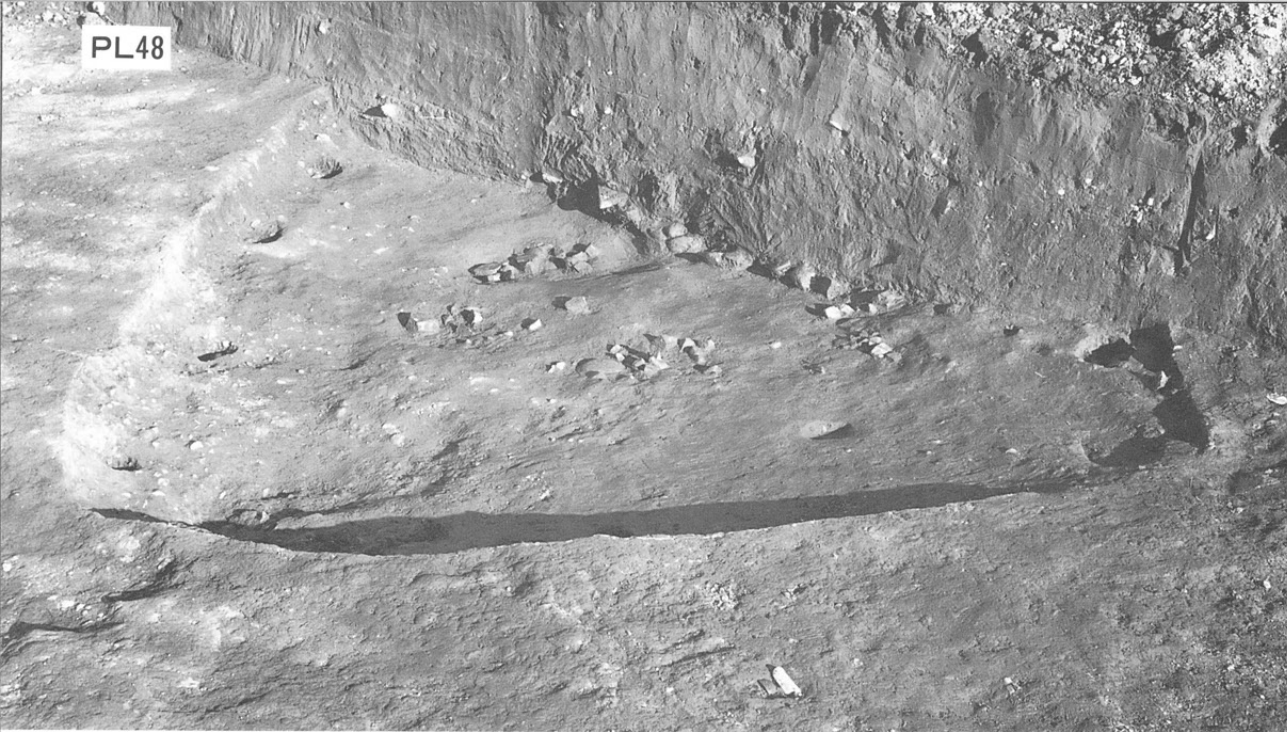
左 SK2480ほか  
(南より)  
右 SK2480(南より)



SK2463(南より)

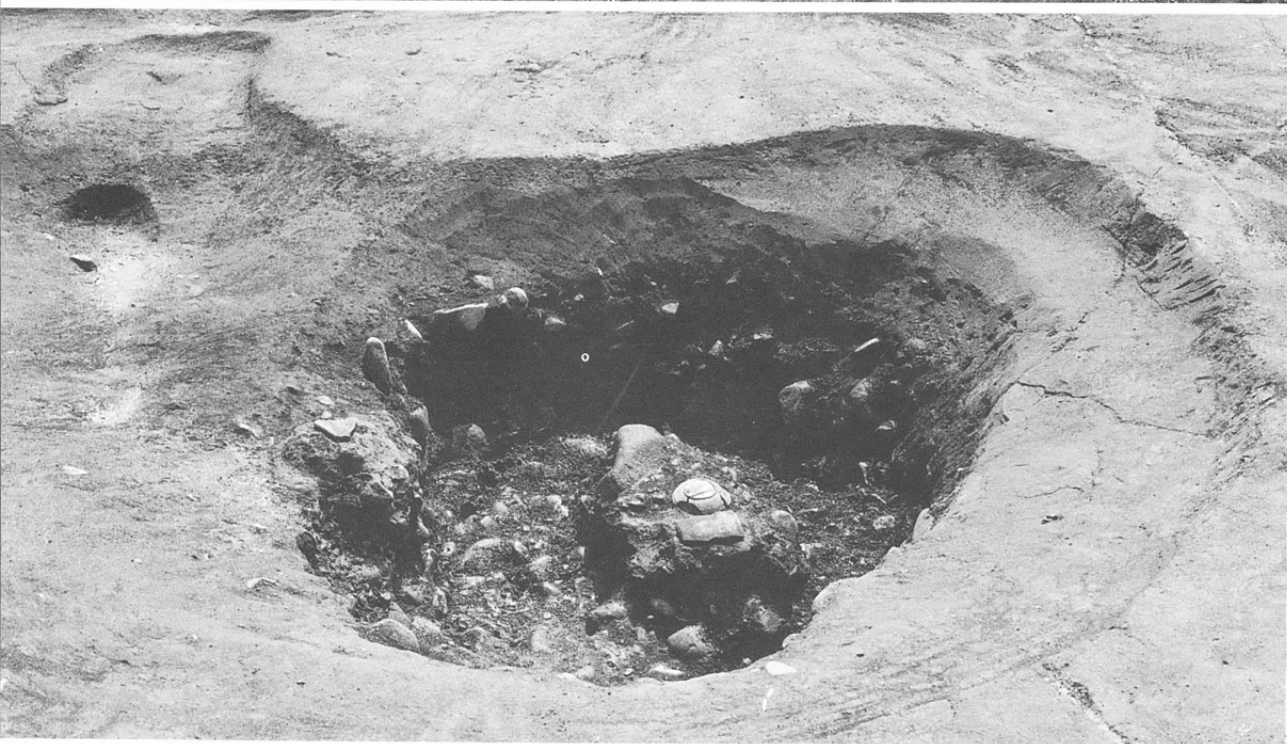


PL48



中世遺構(北部・北端)

SB190(西より)



SK2769(西より)



SN12(北より)

中世水田址

PL49

SL12  
(上空東より)



SD62・SL15  
(北東より)



SL19(南西より)



PL50

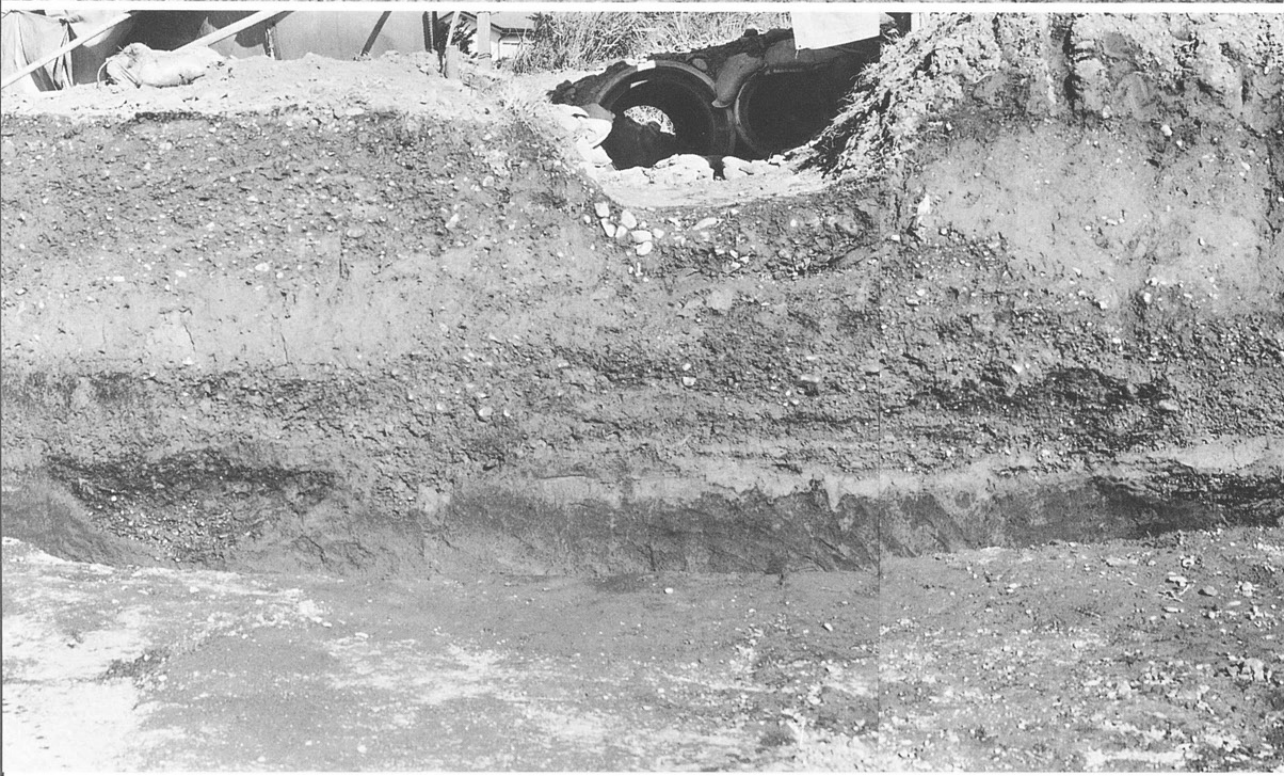


河川の土層断面

横堰 NR3  
土層断面(北より)



宮沢土層断面  
(西より)

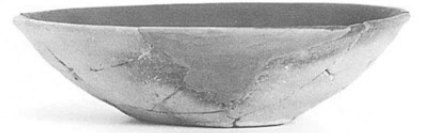


久保川土層断面  
(西より)

SB2 出土土器



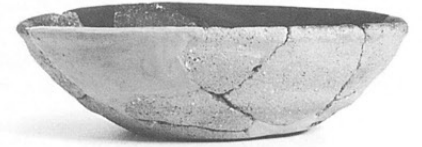
1



4



6



10



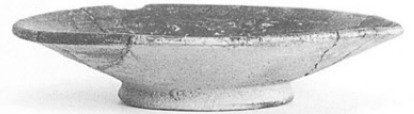
12



15



14



16



17



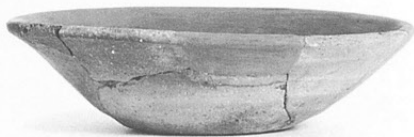
18



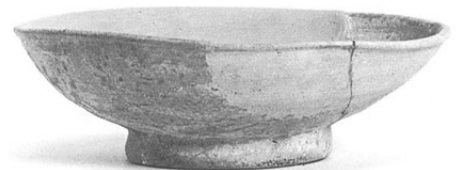
19



21



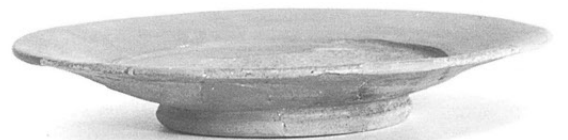
23



24



25



30

SB2 出土土器



28



29



31



32

左 SB2 出土土器  
右 SB4 出土土器



40



2

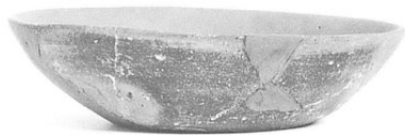
SB6 出土土器



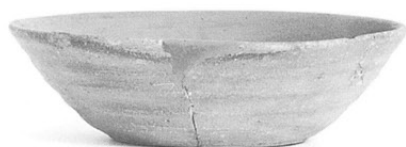
1



2



3



4



5

SB 8 出土土器



3



5



7



8



14



10

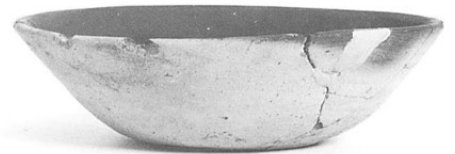


17

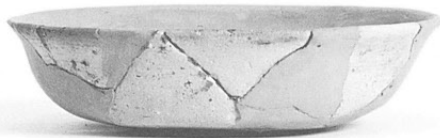
SB25 出土土器



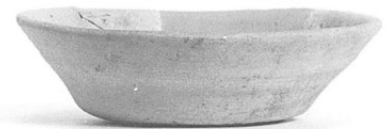
1



2



3



4



5



6



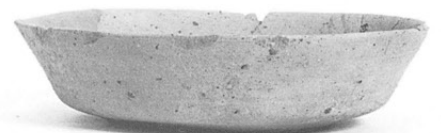
7



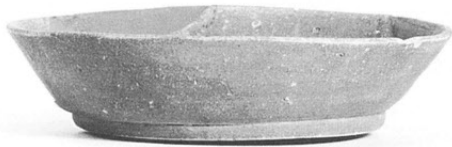
8



9



10



11



13



15



16



22



23



24



25



左 SB26出土土器  
右·下 SB29出土  
土器



7



1



2



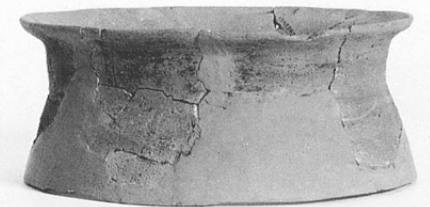
4



6



7



9

SB30出土土器



1



8



2



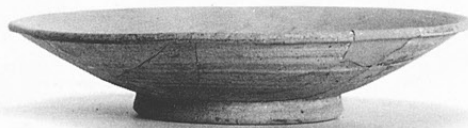
9



3

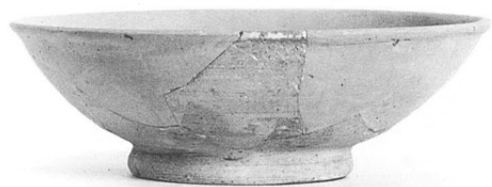


10



12

左 SB30出土土器  
右 SB32出土土器



11



25



18

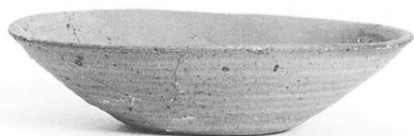
SB31出土土器



1



4

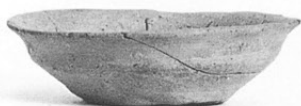


6



5

SB33出土土器



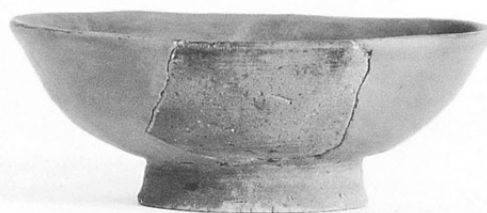
1



2

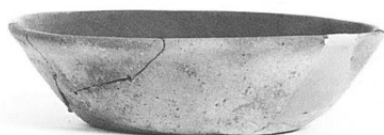


5



6

SB35出土土器



2



3



4

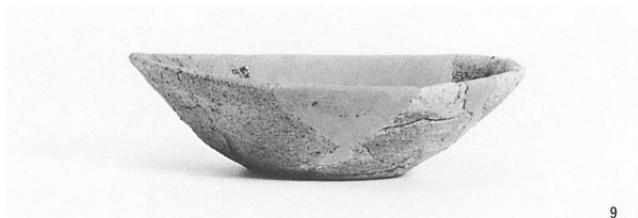


7

SB35出土土器



8



9



10



11



12



13



15



16



17



18



19



20

SB37出土土器



5



7



11



12



13

SB37出土土器



14

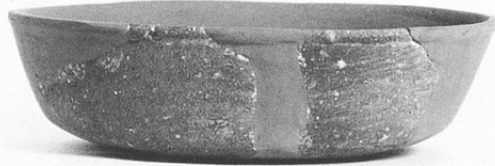


15

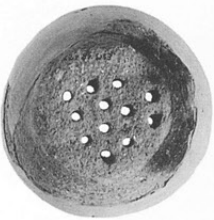
SB51出土土器



9



3



13



15

左 SB51出土土器  
右 SB40出土土器

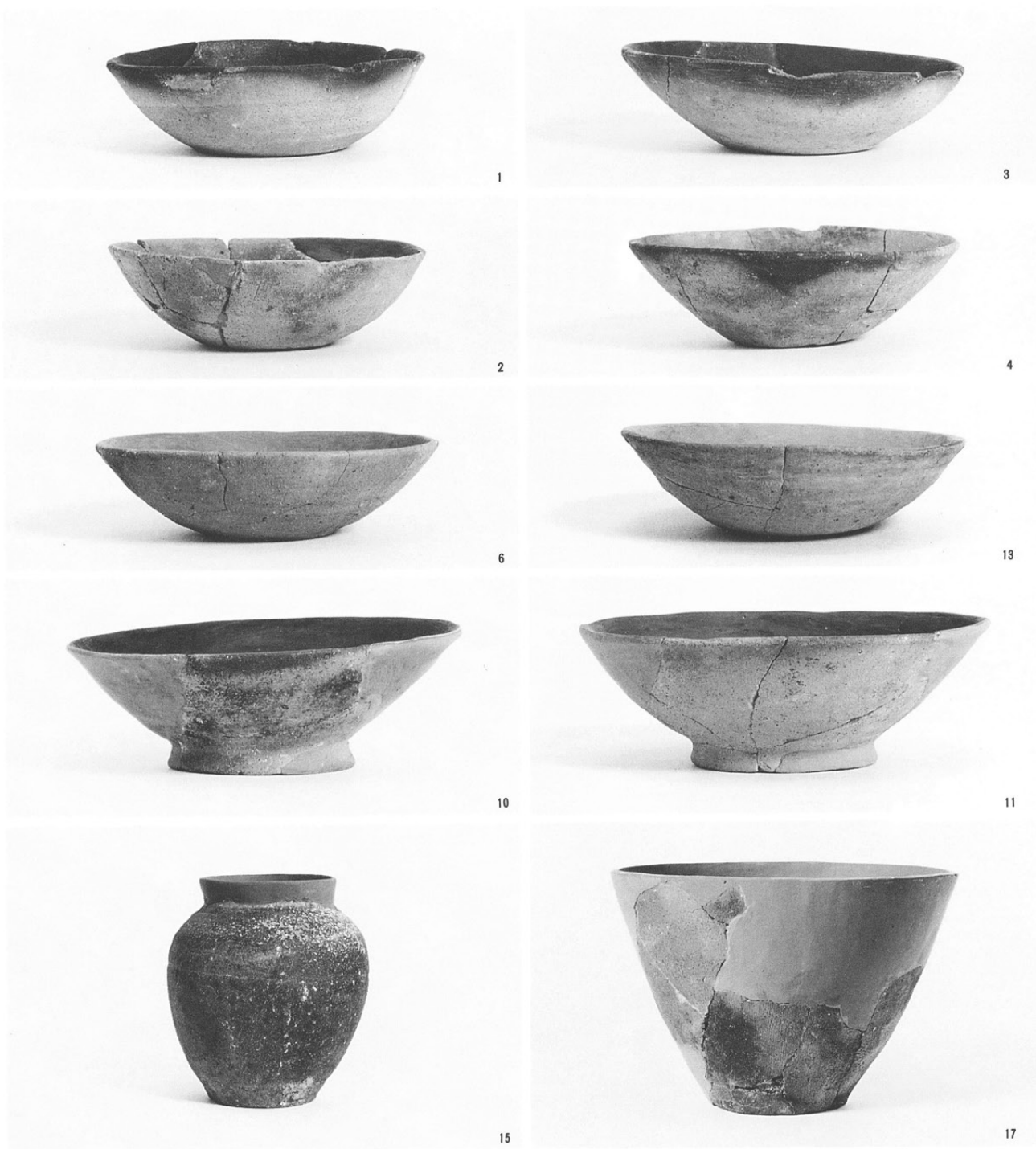


12



10

SB61出土土器



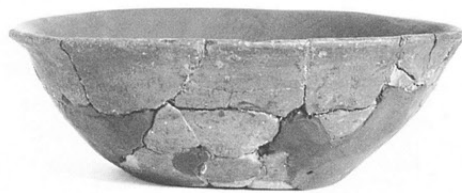
SB83出土土器



SB83出土土器



9



10

左 SB83出土土器  
右 SB64出土土器



12



5

SB84出土土器



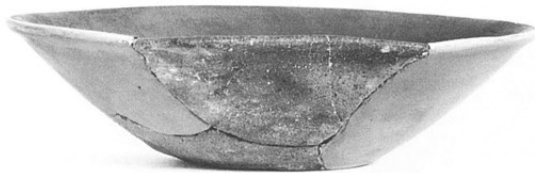
13



2



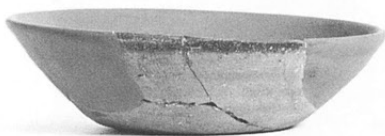
1



4



6



10



12

SB89出土土器



6

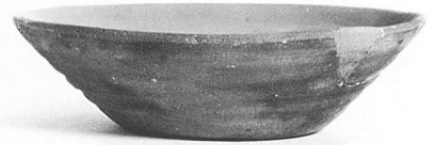


7

SB96出土土器



4



9



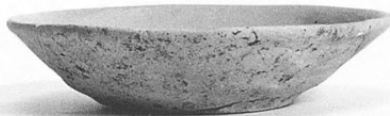
5



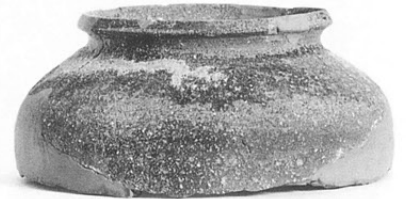
11



6



7



13



8

SB102出土土器



13



14

SB105出土土器



1



9



6



13

SB107出土土器



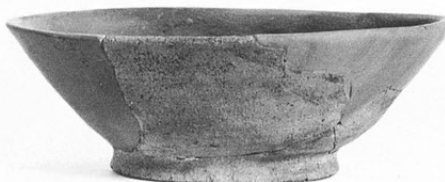
1



2



3



5



6



7



8



9



10



11

SB111出土土器



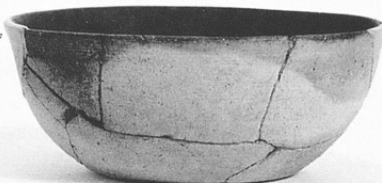
4



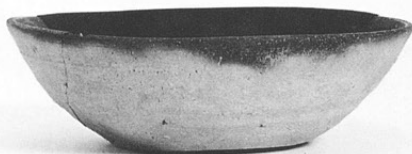
5



6



7



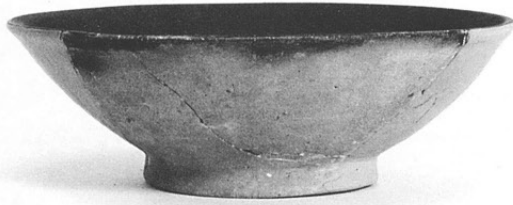
12



16



SB111出土土器



17



20



23



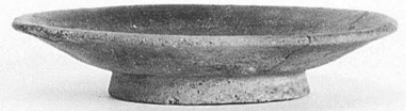
25



35



2



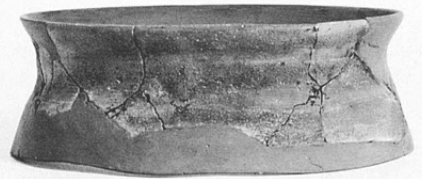
18



19



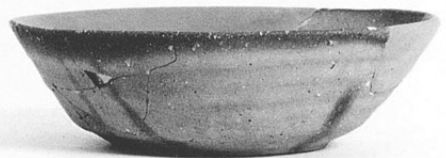
24



28



31



3

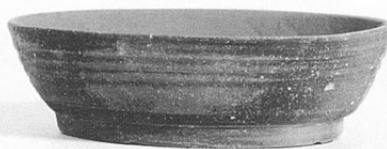
SB119出土土器

SB119出土土器

SB122出土土器



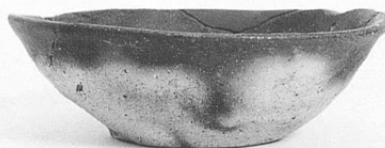
4



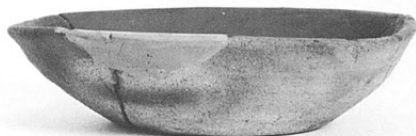
5



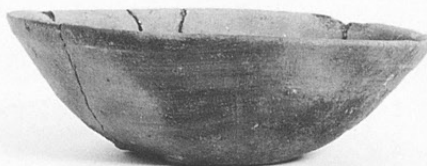
1



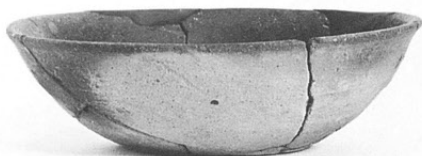
3



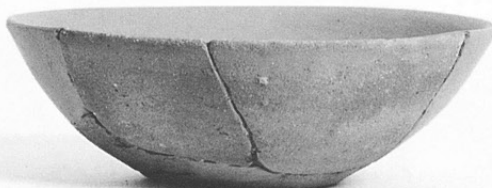
4



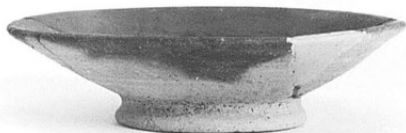
5



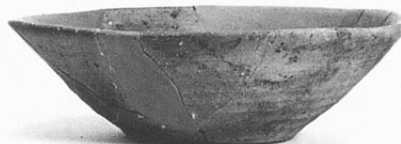
12



15



19



22



23



24



35



40

SB147出土土器



3



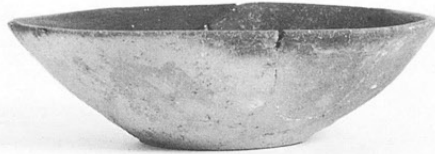
4



7



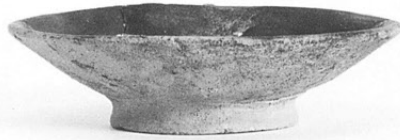
11



8



13



19



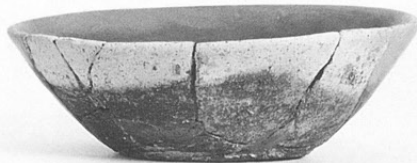
20



25



27



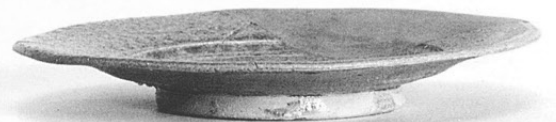
29



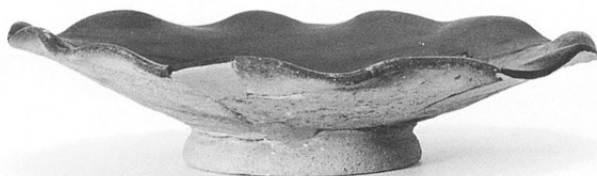
30



34



40



21



45

SB146出土土器



5



6

左 SB146出土土器  
右 SB148出土土器



2



5

SB148出土土器

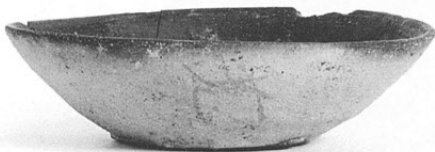


11

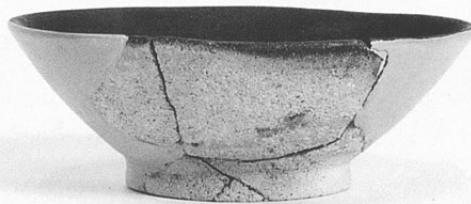


12

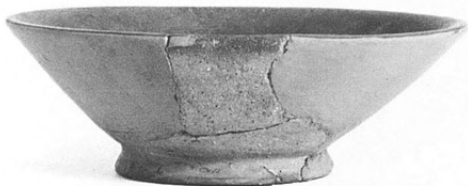
SB151出土土器



5



13



16

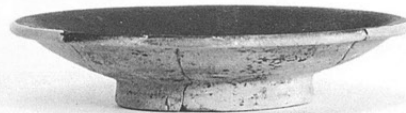


17

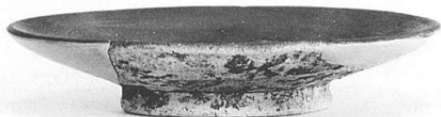
SB151出土土器



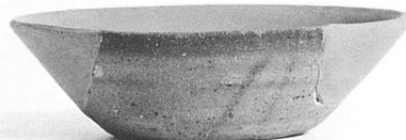
18



20



21



23



25



44

SB153出土土器



1



2



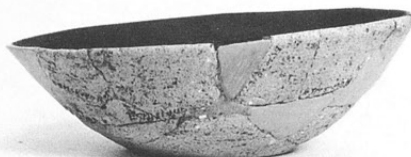
3



5



6



9



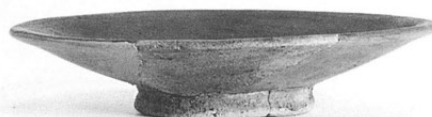
10



15



22



28

SB153出土土器



24



27



28



29



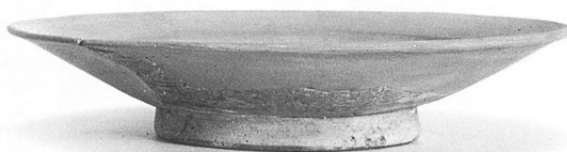
30



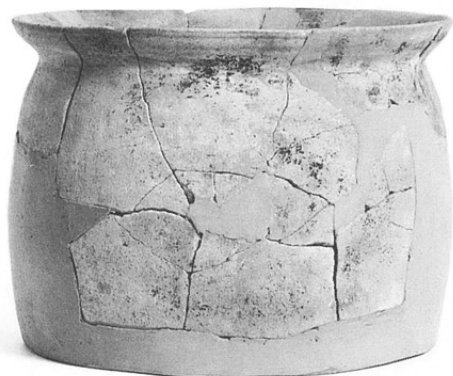
31



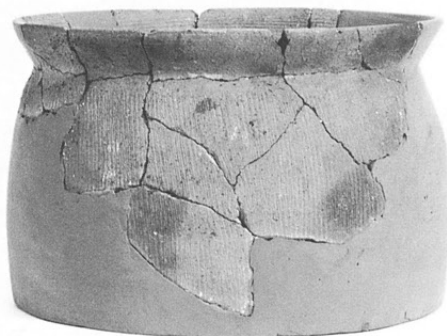
32



33



44



45

左 SB153出土土器  
右 SB152出土土器



39



2

SB167出土土器



1



3



4



5



6



7



8



12



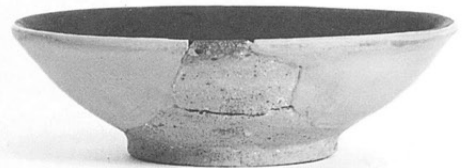
13



18



16



15



19



20



22



2

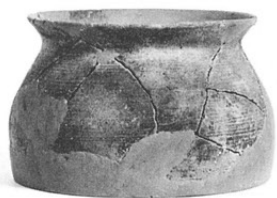
SB167出土土器



24



25



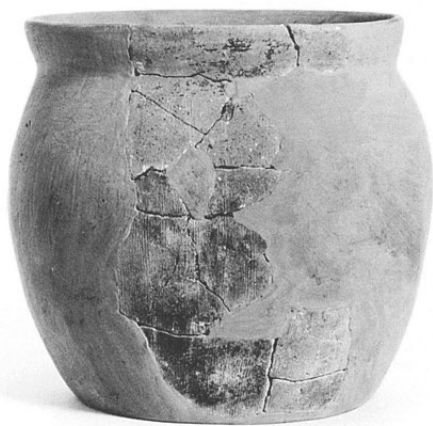
31



32



33



34



36

SB169出土土器



1



2



3



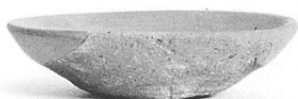
4



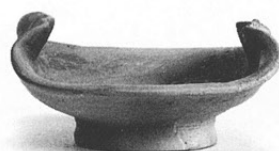
5



6



7



9



緑釉陶器

- 1. SB30
- 2. SB151
- 3. SB168



1



2



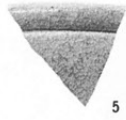
3

輸入陶磁器

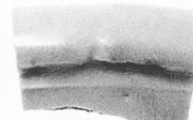
- 4. SB172
- 5. SB172
- 6. SB172
- 7. SD23
- 8. SB174
- 9. SK1263
- 10. NR 8
- 11. 北端II地区南
- 12. 北部II地区
- 13. 北端I地区南



4



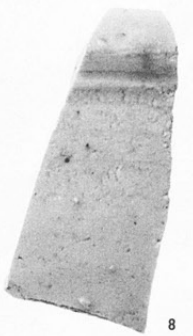
5



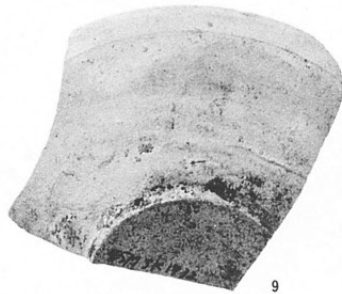
6



7



8



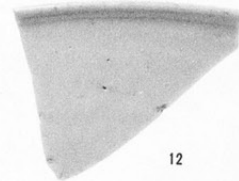
9



10



11



12

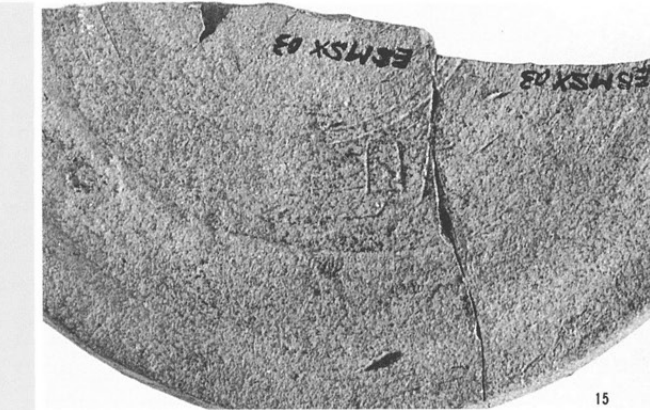


13

- 14. SB100

ヘラ書須恵器

- 15. SB53
- 16. SB53



15



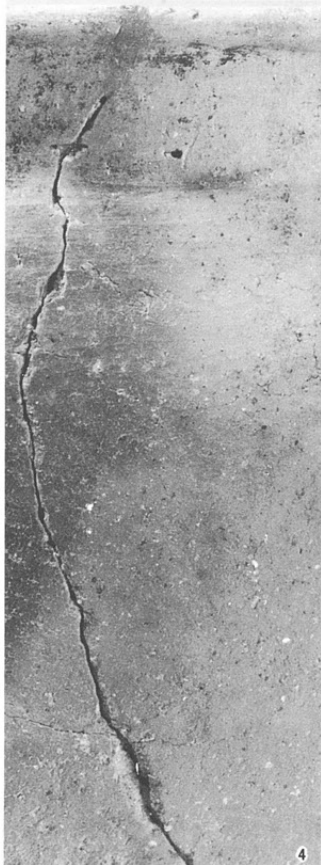
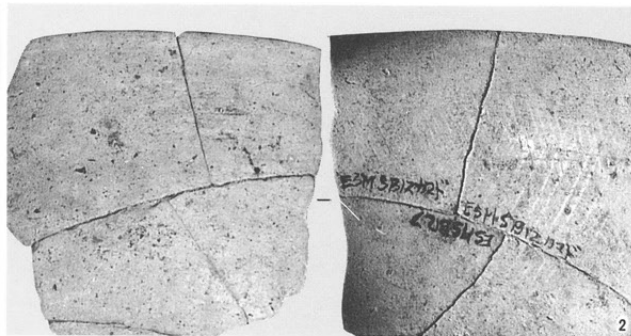
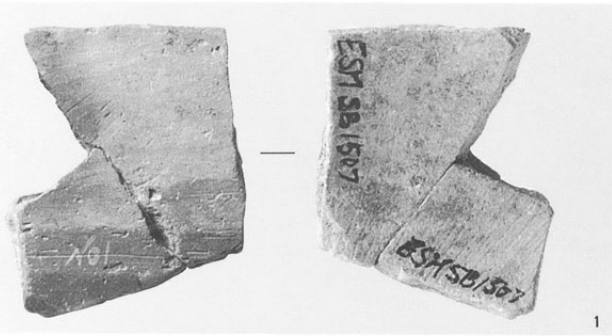
14



16

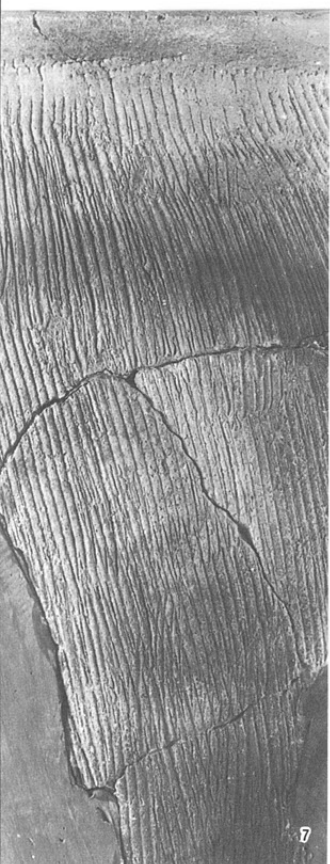
暗文土器

- 1. SB49
- 2. SB128

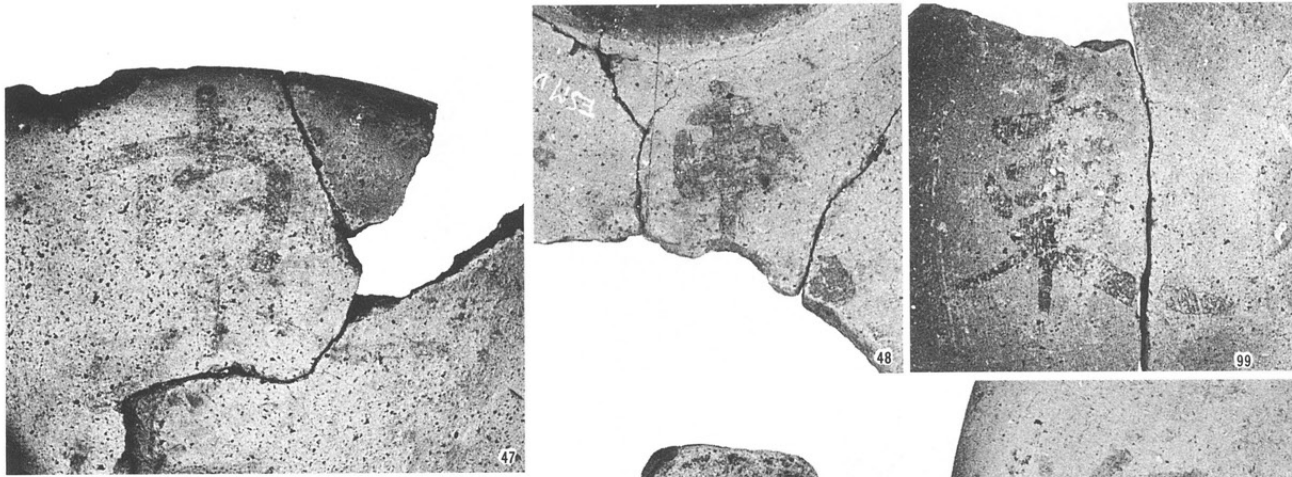


土師器甕の調整

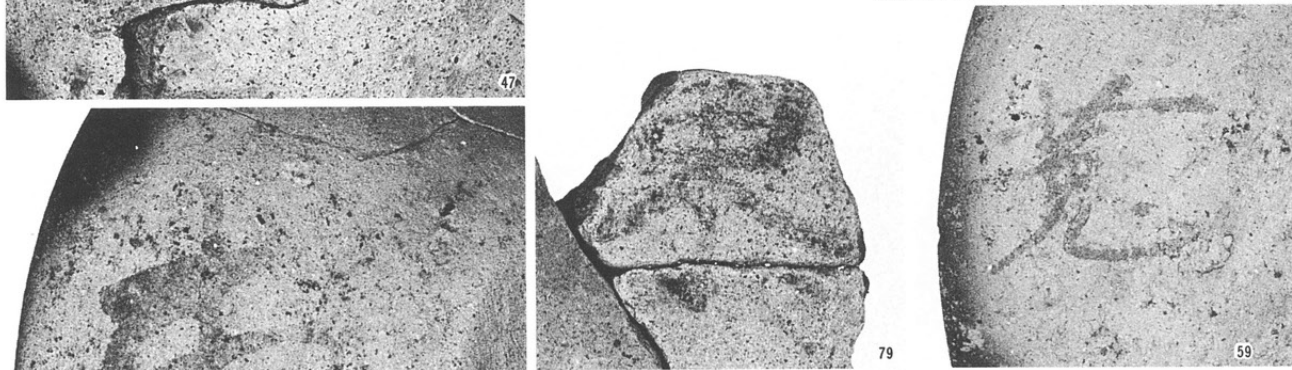
- 3. 甕A 2期 SB25
- 4. 甕F 1期 SB148
- 5. 甕D 2期 SB25
- 6. 甕B 1期 SB146
- 7. 甕B 5期 SB155
- 8. 甕B 6期 SB22
- 9. 甕B 7期 SB111
- 10. 甕B 8期 SB37



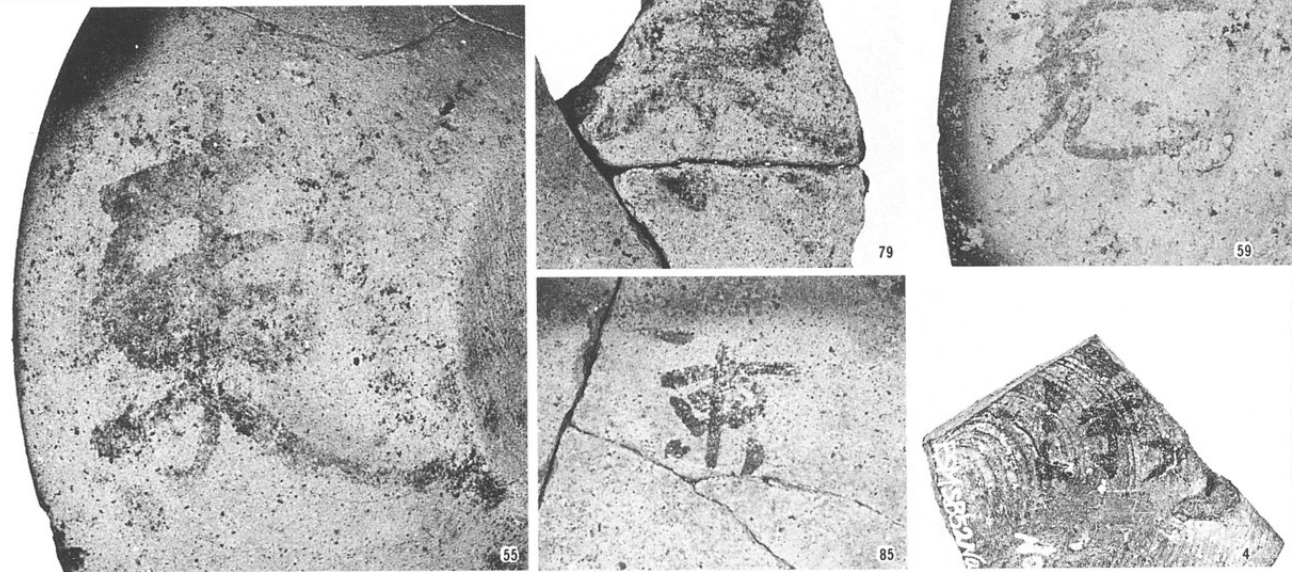
47·48·55  
79·85·99「東」



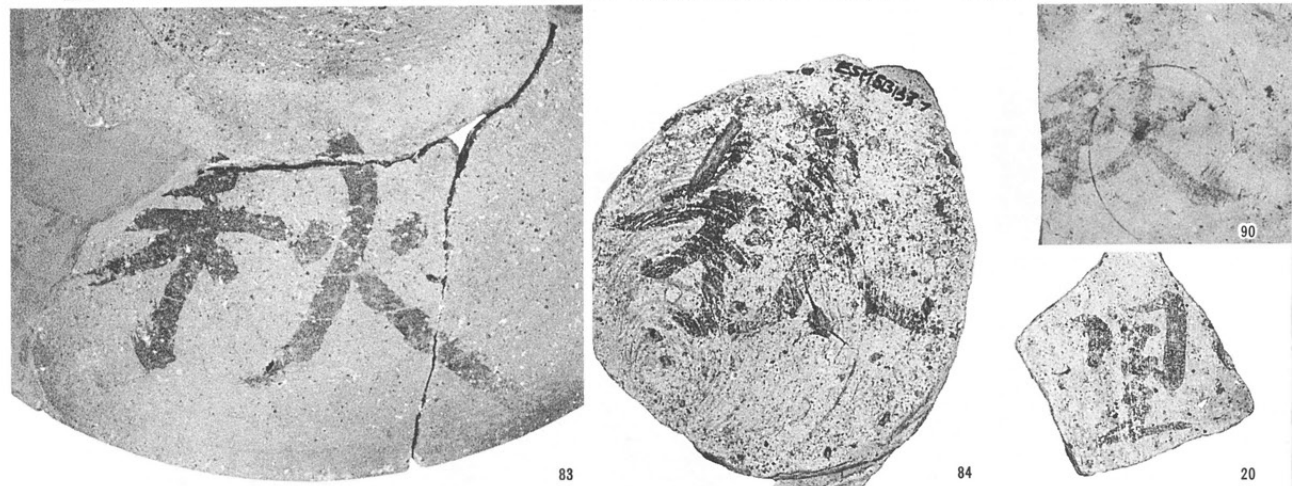
59「菟」



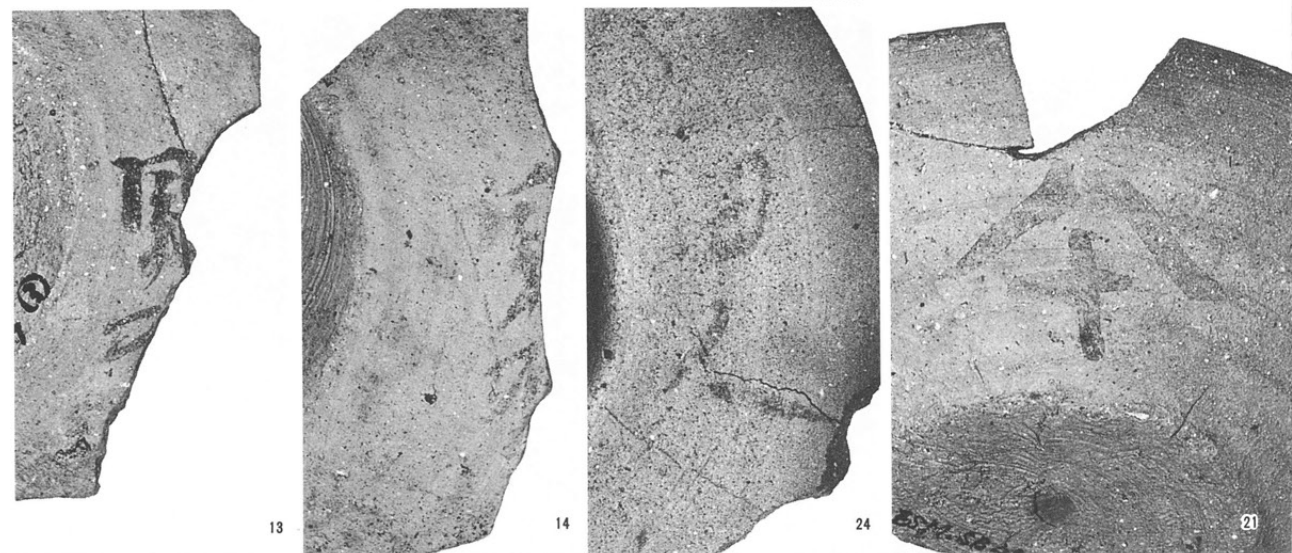
4「口」



83·84·90「秋」  
20「里」



13·14「里口」  
24「田人」  
21「今」

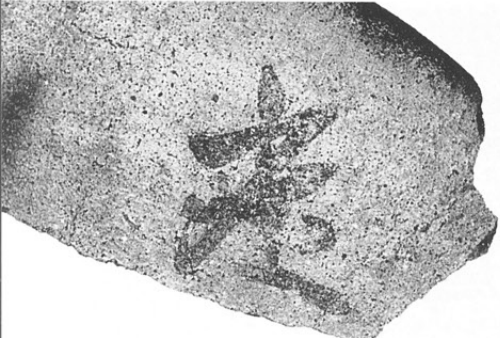




30



33



40

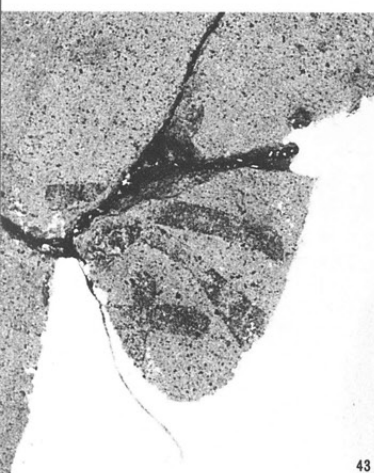


30 「倉」  
37 「口」

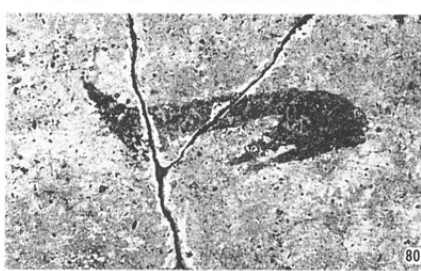
33 「金」

40 「庄」

37



43



80



102



93



108

43 「壘」  
80 「一」  
109 「田中」

102 「寺」

93 「之」

108 「訓」



109

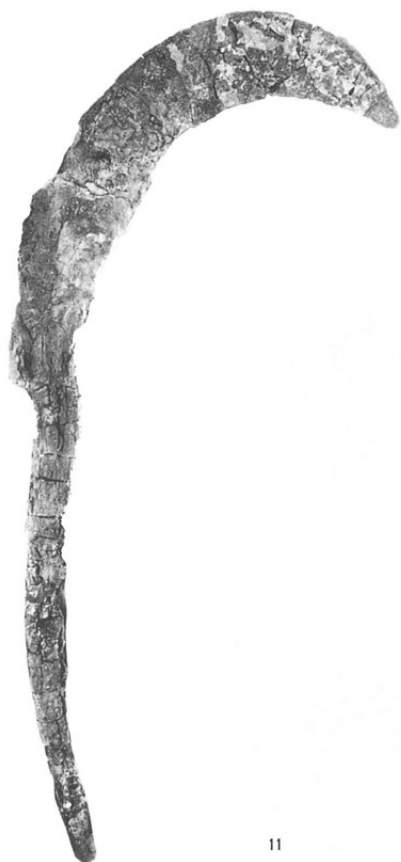
- 1. SB57
- 2. SB62
- (1:3)



- 12. SB119
- 4. SB 8
- 14. SB128
- 15-16. SB151
- 20. SK1969
- 8. SB84
- 6. SB61
- 18. ST58



- 11. SB97  
(1:3)
- 15. SB33
- 7. SB83
- 17. SB176



11



5

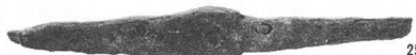
7



17



24



25



32

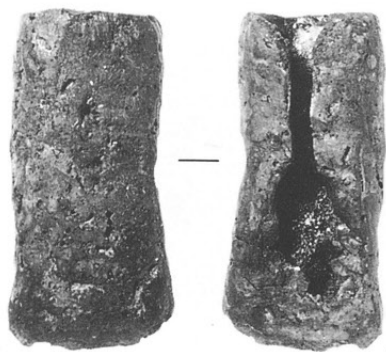


36



39

- 24. SB175
- 25. SB 8
- 32. SB65
- 36. SB121
- 39. SB145



48



50



64



63

- 48. SB151
- 54. SB109
- 56. SB176
- 53. SB168
- 52. SB106
- 50. SB97
- 49. SB 2
- 64. SB57
- 63. SB 2
- 65. SB141
- 66. SB105



54



56



53



52



65

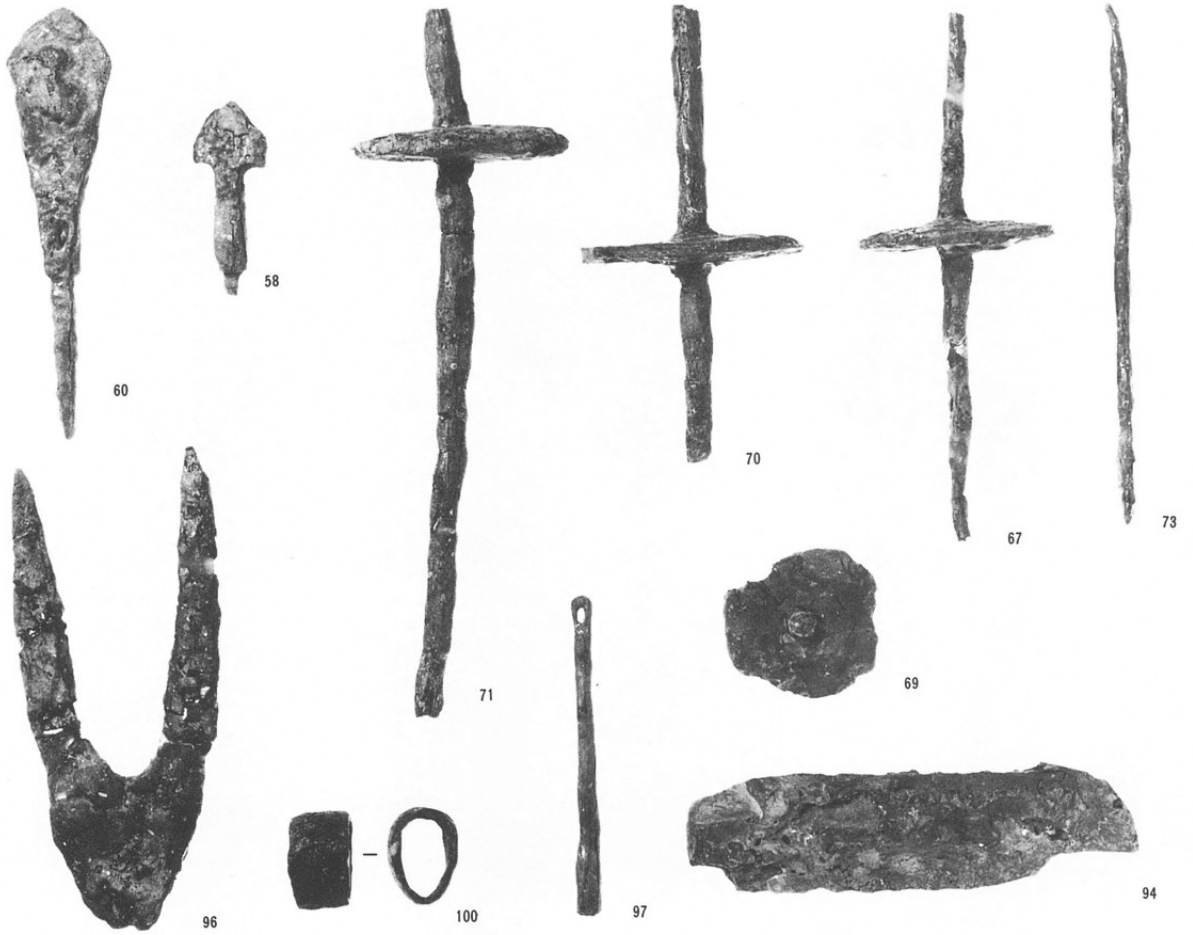


66

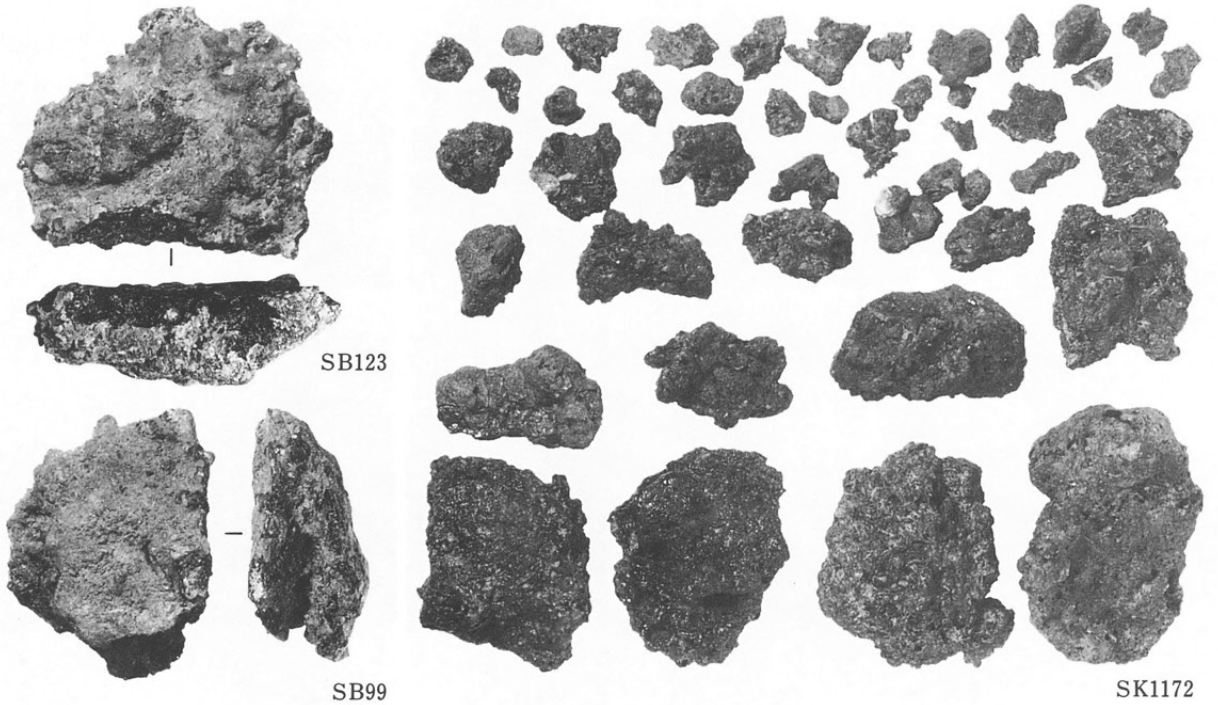


49

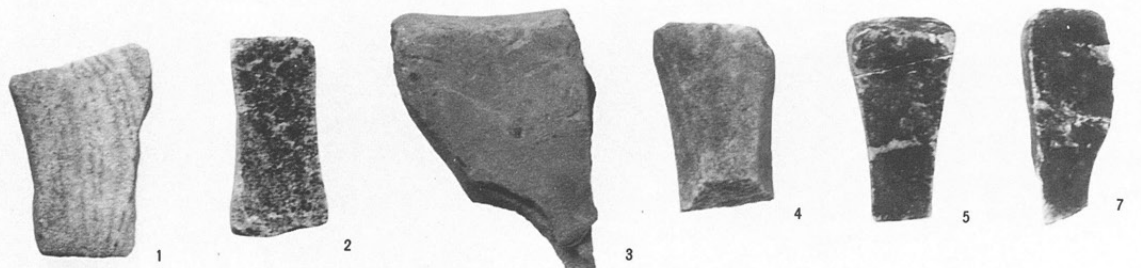
- 60. 北部II東
- 58. SB147
- 71・78. SK291
- 67. SB62
- 69. SB128
- 73. SB148
- 96. SB88
- 100. SB129
- 97. SB173
- 94. SB552
- (1:2)

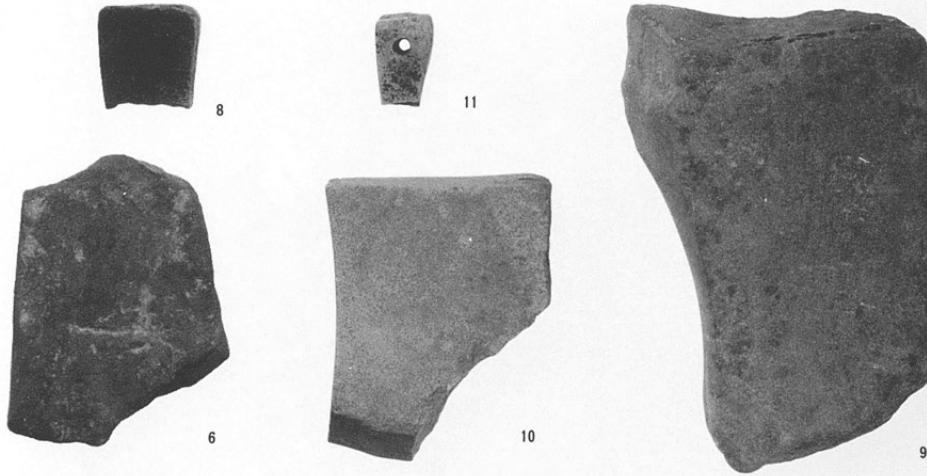


- 鉄滓
- 上 SB123
- 下 SB99
- 右 SK1172
- (1:3)

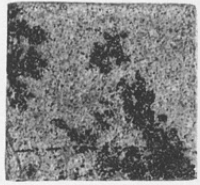


- 砥石
- 1. SB20
- 2. SB29
- 3. SB32
- 4. SB34
- 5. SB60
- 7. SB97
- (1:3)

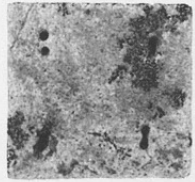




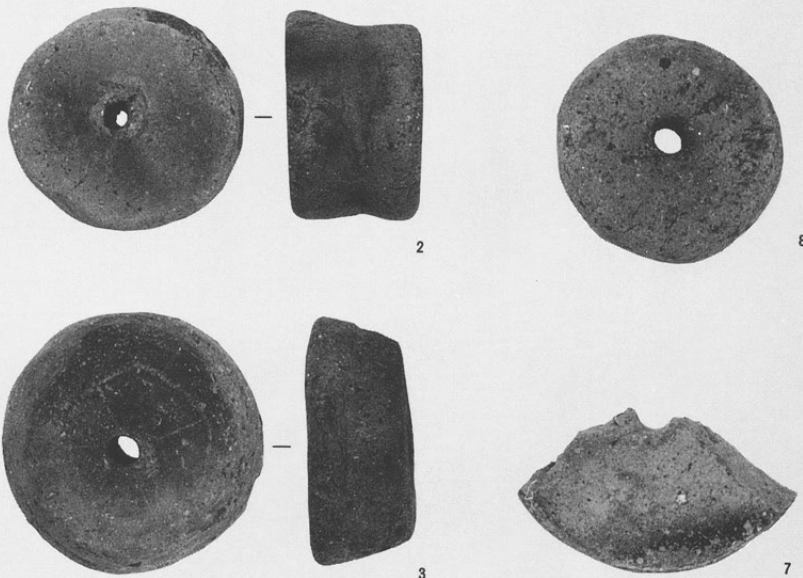
砥石  
 8. SB111  
 11. SB128  
 6. SB84  
 10. SB125  
 9. SB114  
 (1:3)



I

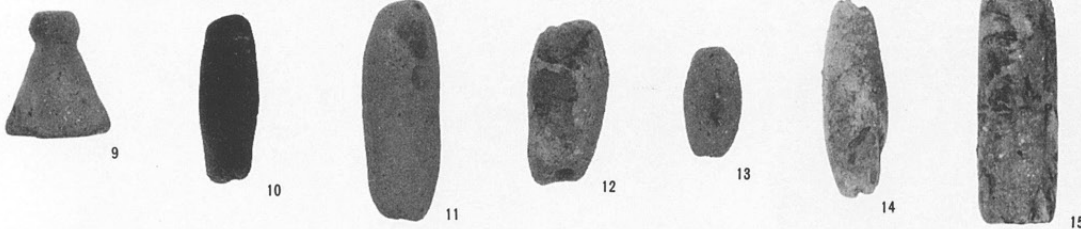


15



巡方  
 15. SB34  
 (2:3)

土製紡錘車  
 2. SB57  
 3. SB57  
 8. 北部II西  
 7. 北部II



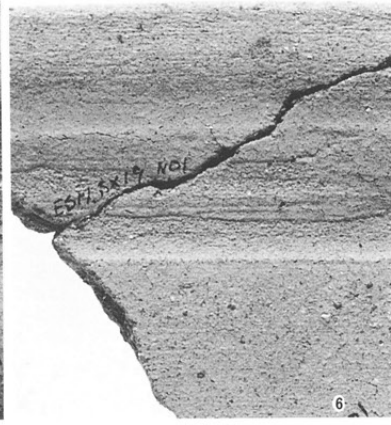
土錘  
 9. SB57  
 10. SB 2  
 11. SB25  
 12. SB51  
 13. SB151  
 14. 北部 I  
 15. 中部 II・III



鞆羽口  
 18. SB106  
 24. SK426



3. SD64土師器皿  
5・6. SK2769内耳鍋



4. SK2079土師器皿



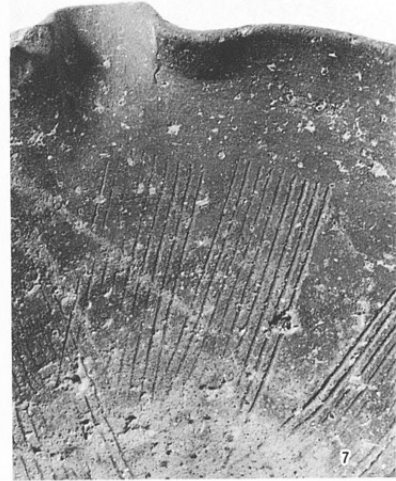
3

4

5

6

7. 北端II北  
土師質播鉢  
右 内面播り目



7

9. SK1975天目茶碗  
右 内面付着の漆器



9

16. SK2770大窯期丸皿



16

8. SK2432天目茶碗  
14. 北端I 東大窯期丸皿  
15. SK2769大窯期丸皿

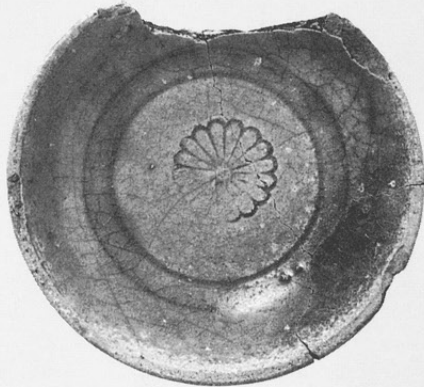


8



14

10. SK2091古瀬戸卸皿  
13. SK2521古瀬戸水注



15

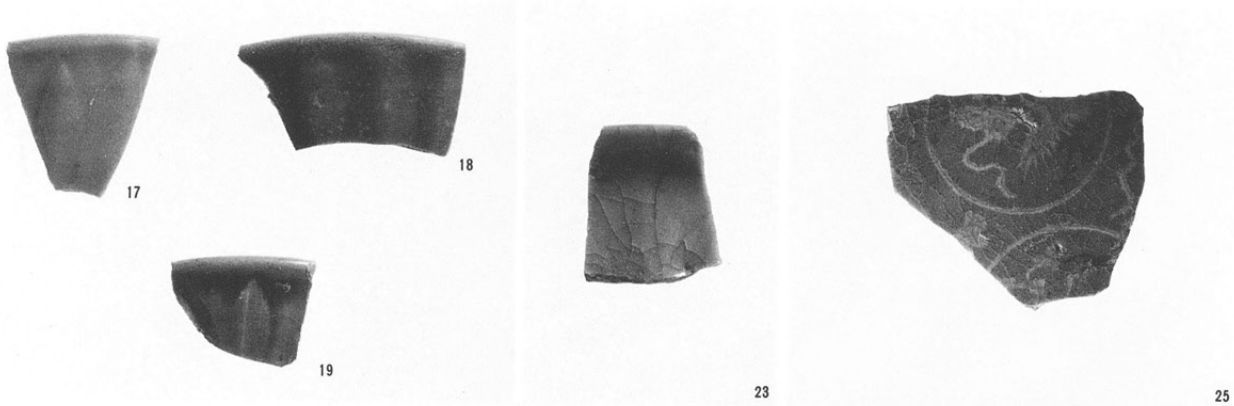


10



13

3・4・7・9・15下(2:5)  
5・6・7右(1:1)  
他(1:2)



- 17. SK1775青磁碗
- 18. SK2480青磁碗
- 19. 中部Ⅰ 青磁碗
- 23. SK2496青磁碗
- 25. 北端Ⅱ北  
高麗青磁梅瓶



- 30. SK1800常滑系甕  
右 同ヘラ書き

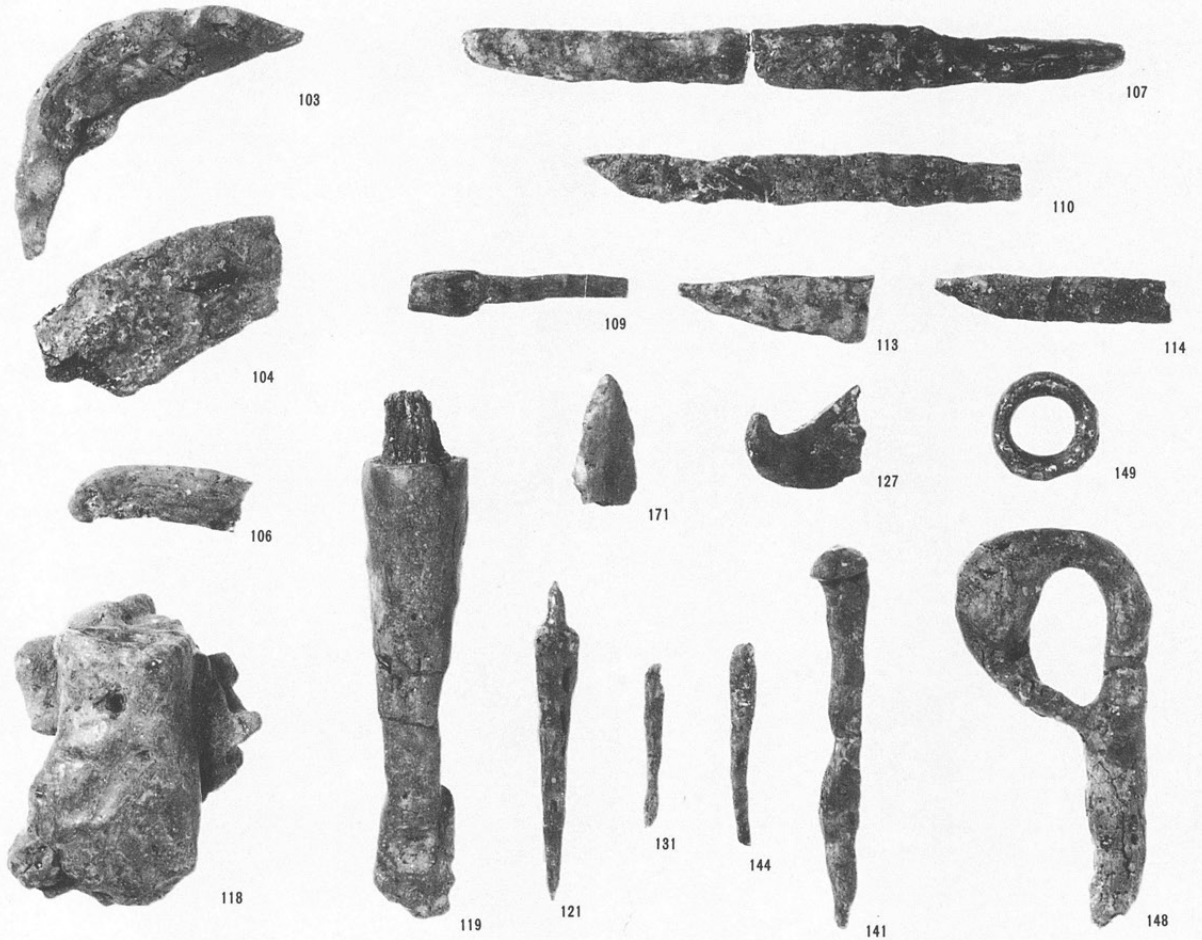


SK1800常滑系甕

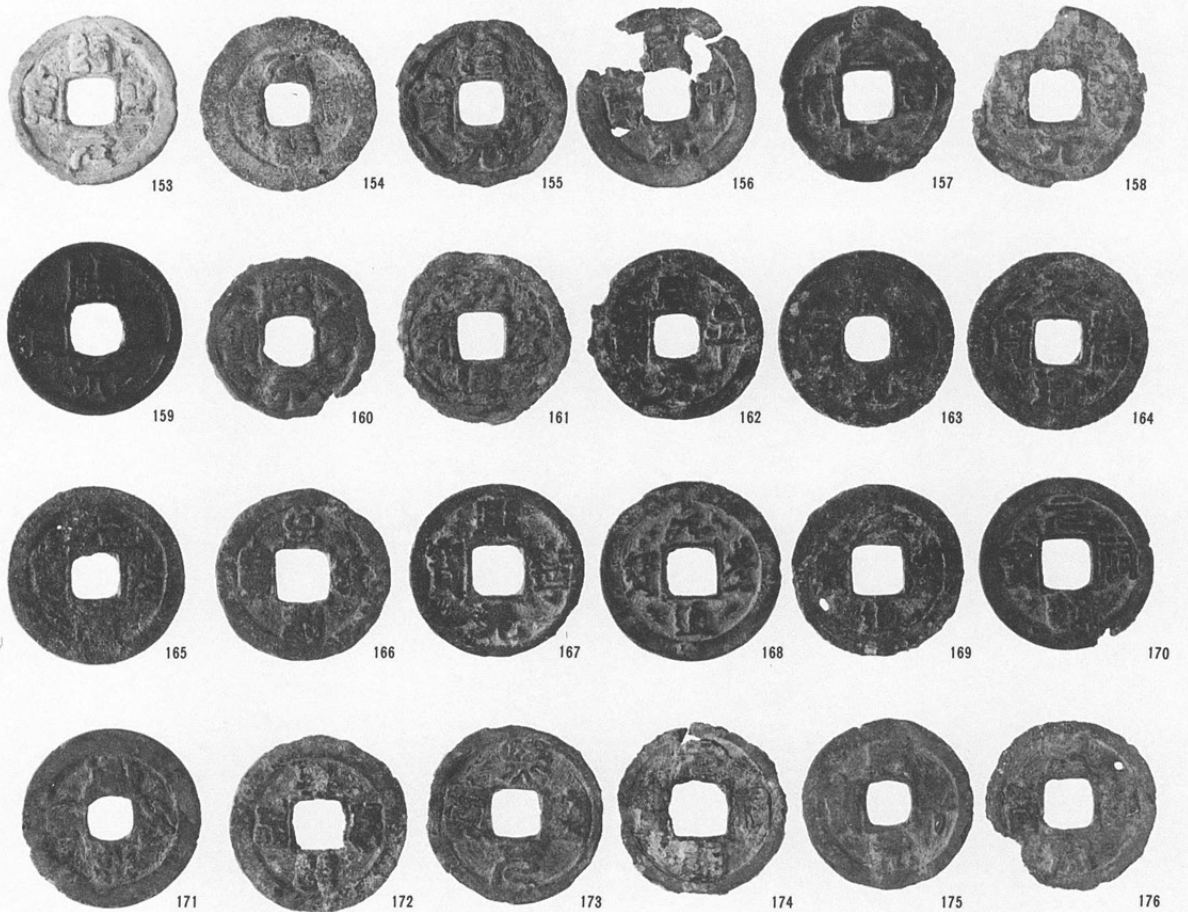


- 30右 (1:1)
- 17~25 (1:2)
- 30・31 (1:4)

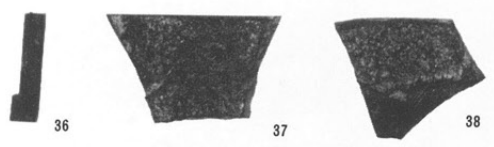
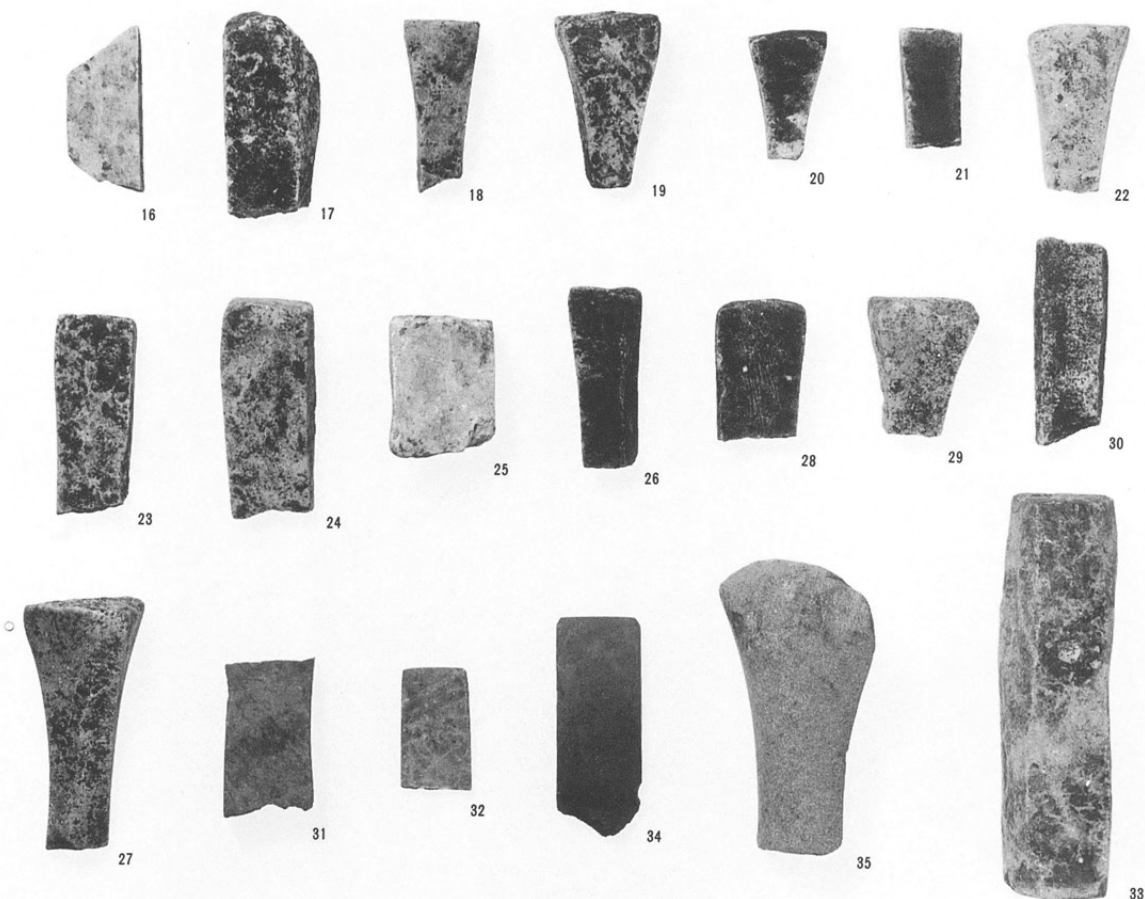
- 103. SK2344
- 104. SK1580
- 106. 北部II東
- 107. SK1973
- 110. SK2127
- 109. SK1785
- 113. SK2483
- 114. SK2643
- 118. SK2134
- 119. SK2643
- 117. 北部II
- 127. SK2288
- 149. SK2643
- 121. SK1877
- 131. SK1977
- 144. SK2539
- 141. SK2226
- 148. SK2554



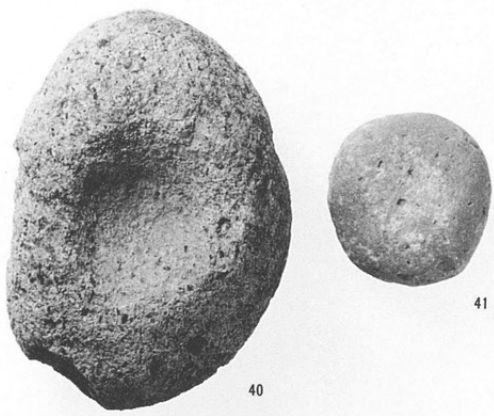
- 153. SK2145
- 154. SK2247
- 155. SK2267
- 156-157. SK2305
- 158. SK2316
- 159. SK2323
- 160-161. SK2509
- 162-172. SK2534
- 173. SK2535
- 174. SK27 2612
- 175-176. SK2640



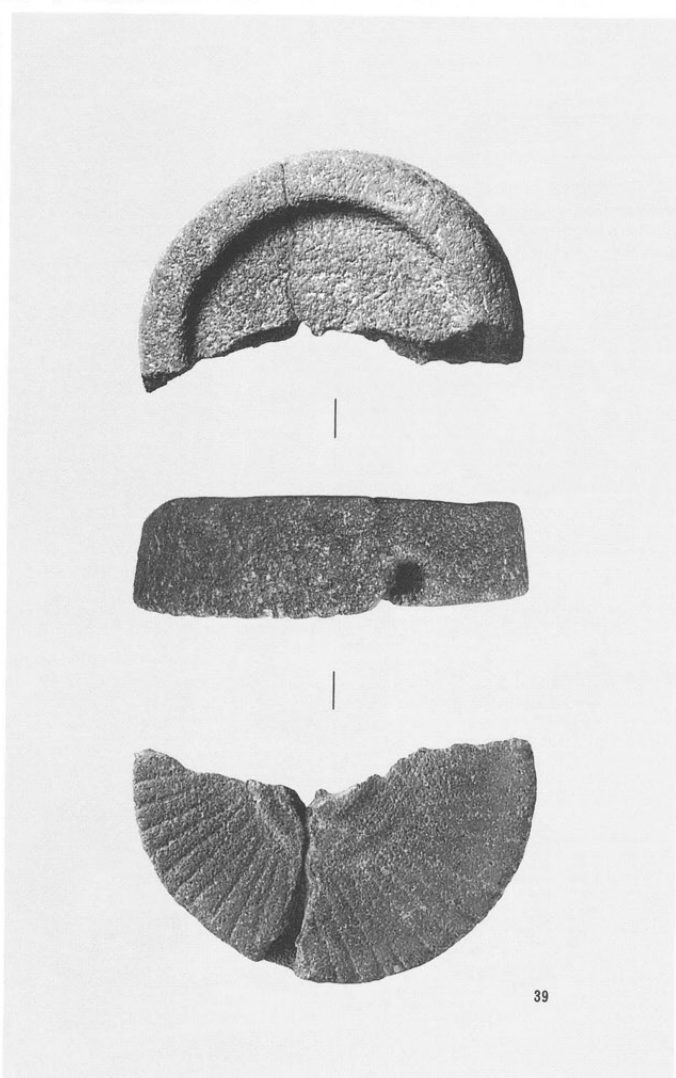
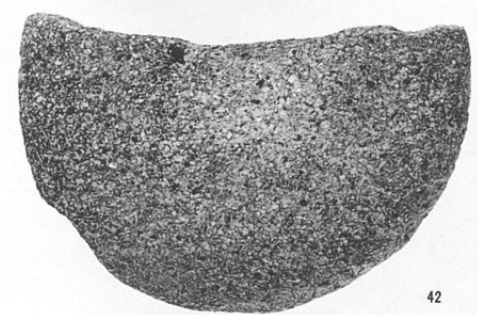
- 16. SK1553
- 17. SK1805
- 18. SK1870
- 19. SK1873
- 20. SK1946
- 21. SK2006
- 22. SK2283
- 23. SK2331
- 24. SK2339
- 25. SK2417
- 26. SK2435
- 28. SK2464
- 29. SK2467
- 30. SK2521
- 27. SK2436
- 31. SK2521
- 32. SK2527
- 34. SK2708
- 35. 北部II東
- 33. SK2640



- 36. SK2130
- 37-38. SB190



- 39. SK2649-2681  
(1 : 6)
- 40. 検出面
- 41. 中部I東
- 42. 北部I  
(1 : 3)



39

(助)長野県埋蔵文化財センター発掘調査報告書 9

中央自動車道長野線埋蔵文化財発掘調査報告書 9

—松本市内その6—

三の宮遺跡

図版編

発行 平成2年3月31日発行  
発行者 日本道路公団名古屋建設局  
長野県教育委員会  
(助)長野県埋蔵文化財センター  
印刷 信毎書籍印刷株式会社

