



SB-94 石出土状況 (南より)



SB-96 石出土状況 (南より)



SB-95 (南より)



SB-97 (北より)



SB-95 遺物出土状況 (北より)



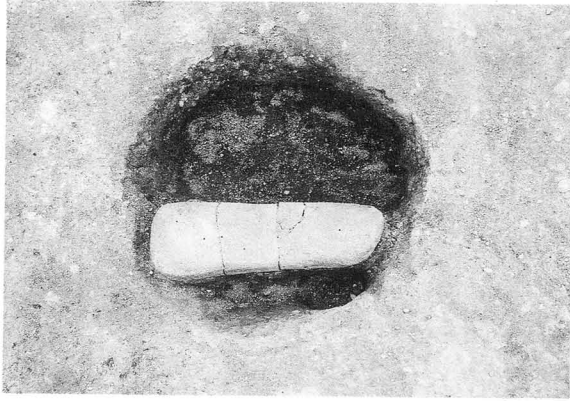
SB-97 Po1, Po2 (南東より)



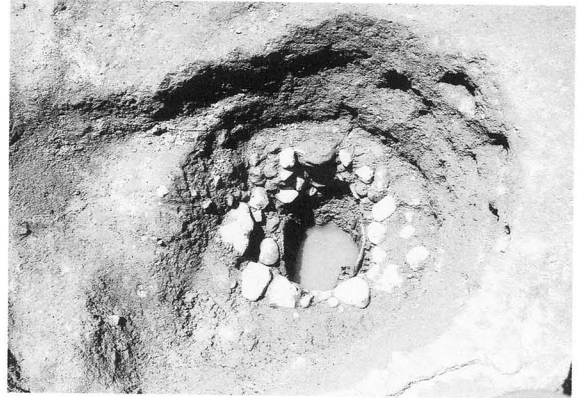
SB-96 (南より)



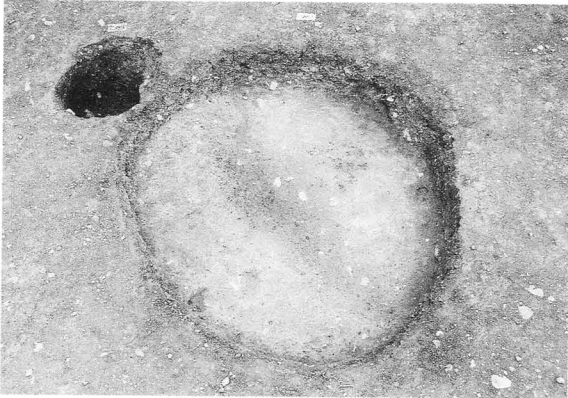
SB-98 (南より)



SB-98 炉 (南より)



SE-01 (上が南西)



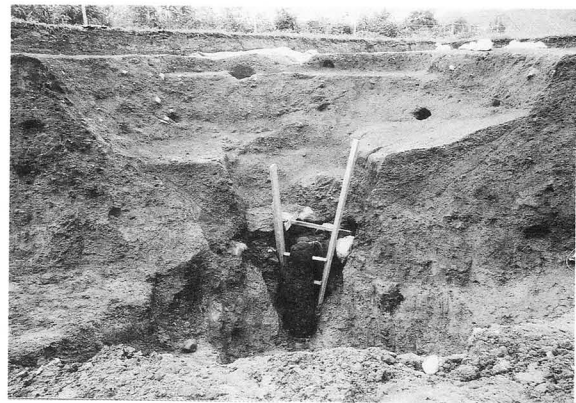
SK-51 (南西より)



SE-01 石組 (上が東)



SD-06 (北より)



SE-01 断面 (全体、北より)



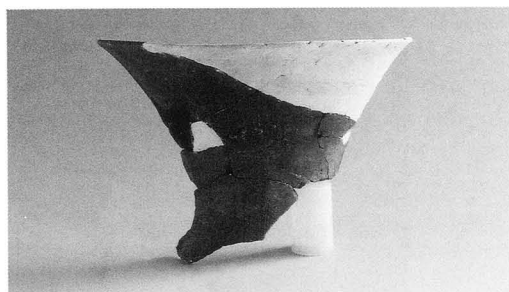
SE-01 全体 (上が東)



SE-01 断面 (井戸側、北より)



SB-84  
1



SB-84  
2



SB-84  
3



SB-84  
4



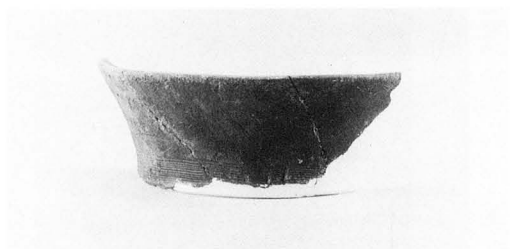
SB-84  
5



SB-84  
6



SB-84  
7



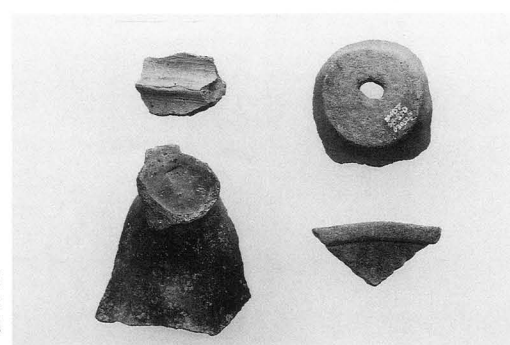
SB-84  
8



SB-85  
1

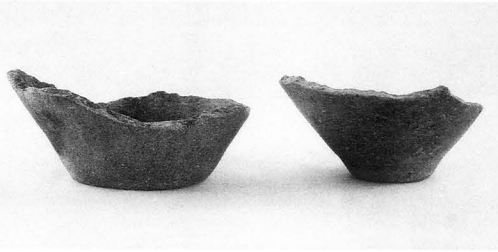


SB-85  
2



SB-85  
3 10  
11 18





SB-85  
4 8



SB-85  
5



SB-85  
6



SB-85  
7



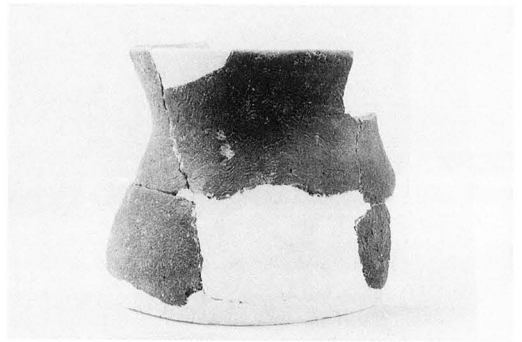
SB-85  
9



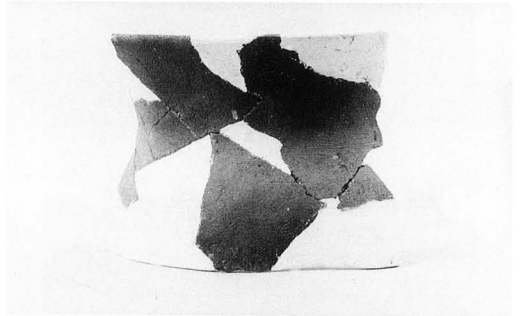
SB-85  
12



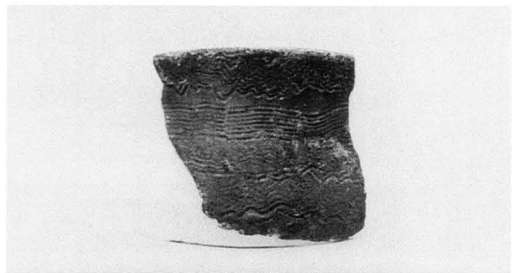
SB-85  
13



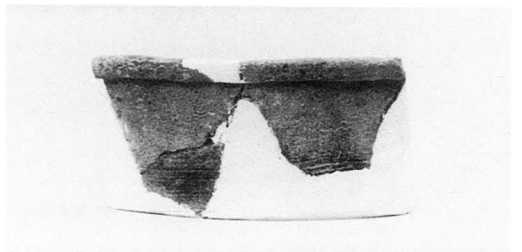
SB-85  
14



SB-85  
15



SB-85  
16



SB-85  
17



SB-86  
1

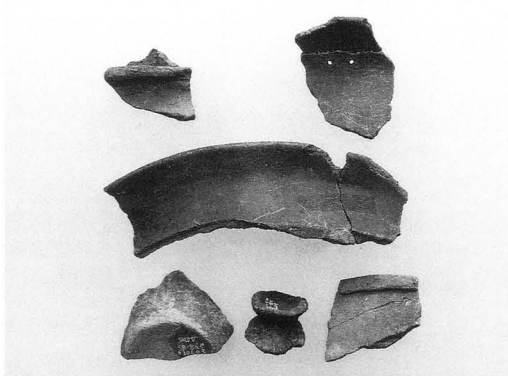




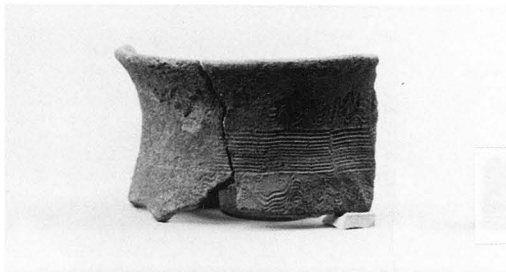
SB-86  
2



SB-86  
12



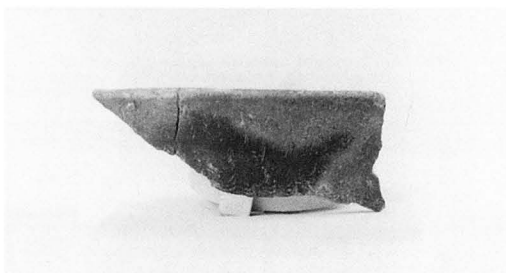
SB-86  
3 4  
5  
10 11 16



SB-86  
13



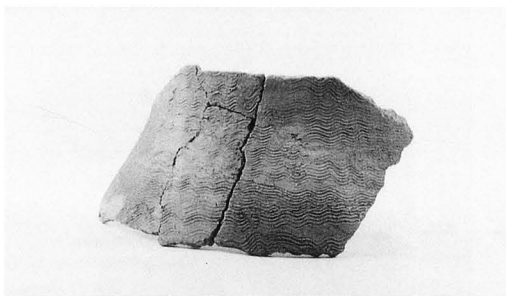
SB-86  
6



SB-86  
14



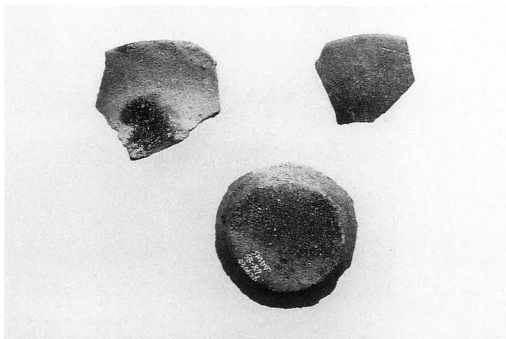
SB-86  
7



SB-86  
15



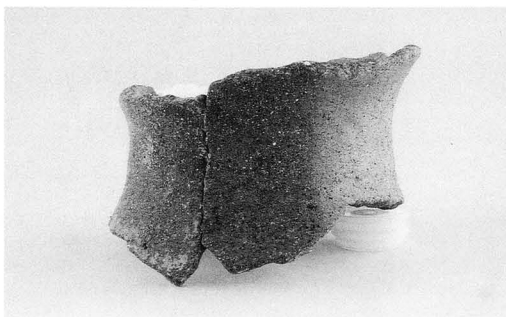
SB-86  
8



SB-87  
1 3  
4



SB-86  
9



SB-87  
2



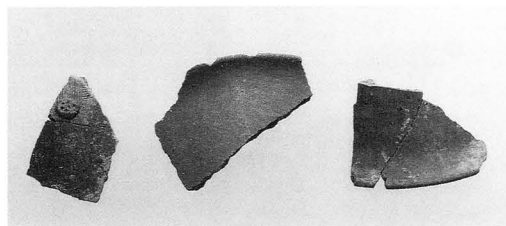
SB-87  
5



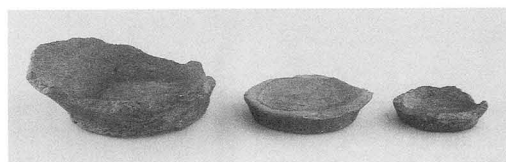
SB-87  
6



SB-87  
7



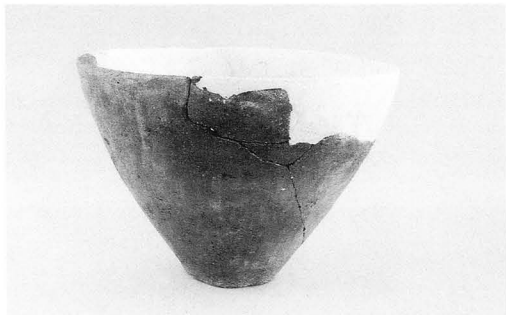
SB-88  
1 4 6



SB-88  
2 3 11



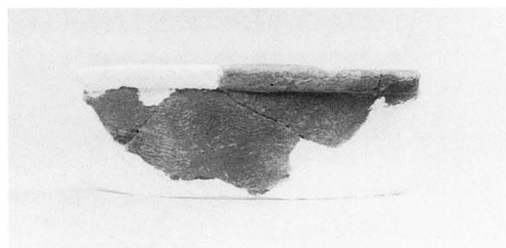
SB-88  
5



SB-88  
7



SB-88  
8



SB-88  
9



SB-88  
10



SB-89  
1 5 11



SB-89  
2



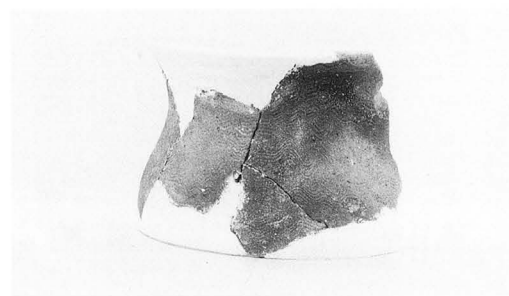
SB-89  
3



SB-89  
4



SB-89  
6



SB-89  
7



SB-89  
8



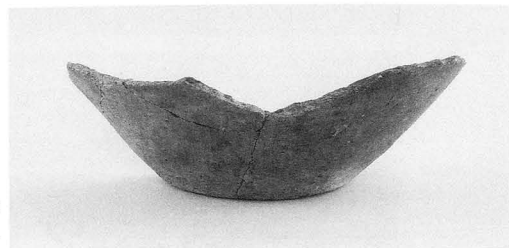
SB-89  
9



SB-89  
10



SB-89  
12



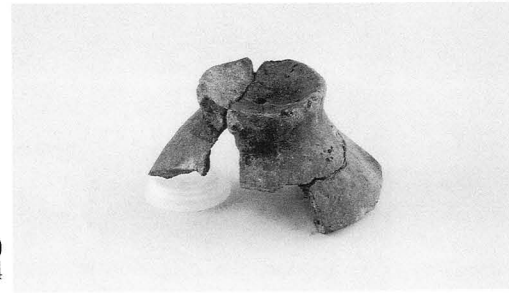
SB-90  
1



SB-90  
2

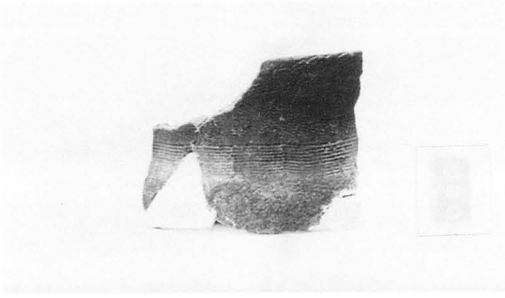


SB-90  
3



SB-90  
4

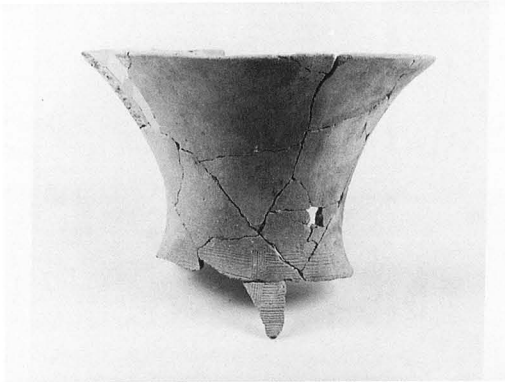




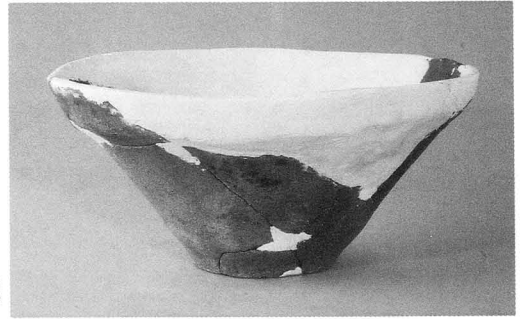
SB-90  
5



SB-91  
6



SB-91  
1



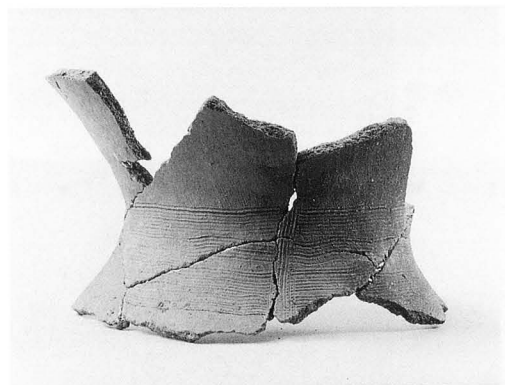
SB-91  
8



SB-91  
2



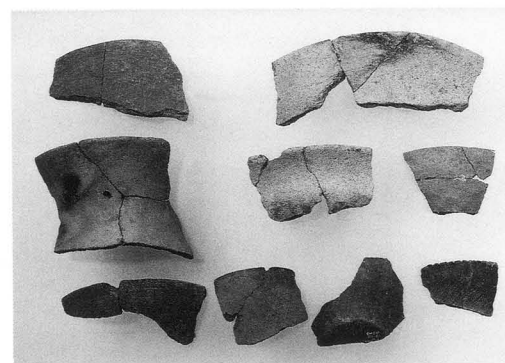
SB-91  
9 10



SB-91  
3



SB-91  
11



SB-95  
4 5  
7 16 20  
21 23 24 37



SB-91  
12



SB-91  
13 14 15



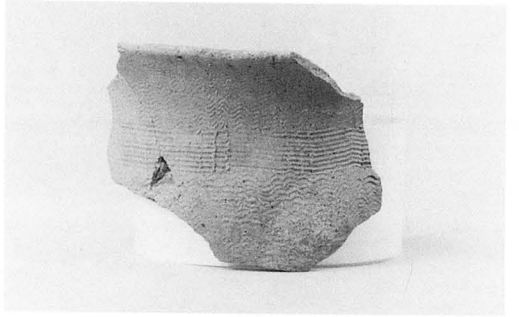
SB-91  
17



SB-91  
30



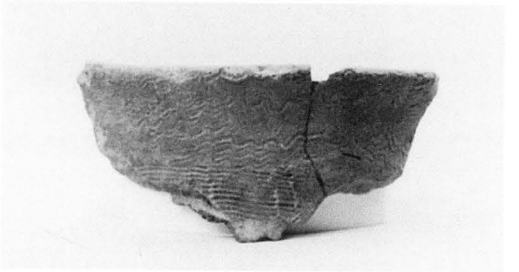
SB-91  
18



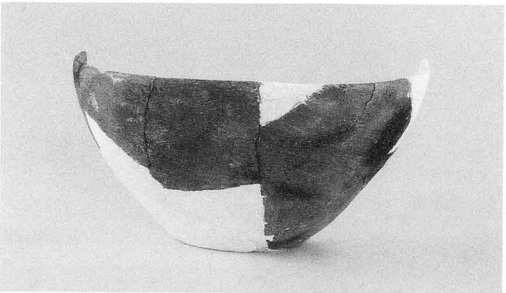
SB-91  
31



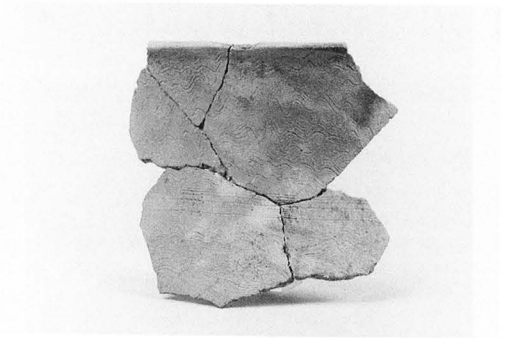
SB-91  
19



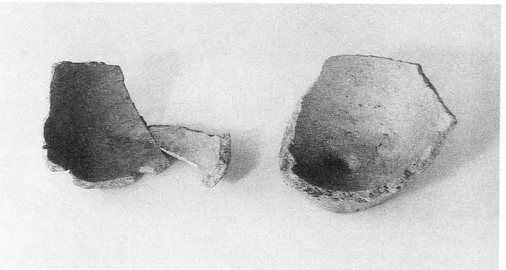
SB-91  
32



SB-91  
22



SB-91  
33



SB-91  
25 26



SB-91  
34



SB-91  
29  
27 28



SB-91  
35



SB-91  
36



SB-91  
38



SB-91  
39



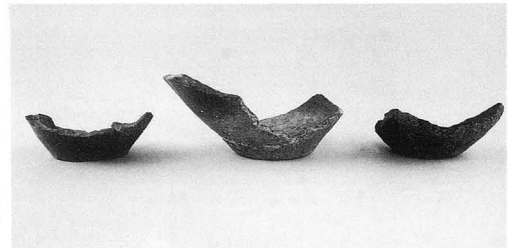
SB-92  
1 2 3  
4 5  
6 7 8 9



SB-92  
10



SB-93  
1



SB-93  
2 6 7



SB-93  
3



SB-93  
4



SB-93  
5

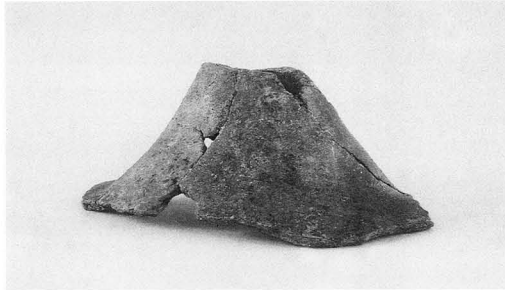




SB-93  
8



SB-93  
13



SB-93  
9



SB-93  
14



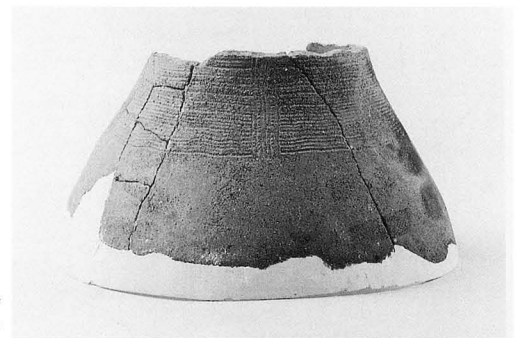
SB-93  
10



SB-93  
15



SB-93  
11



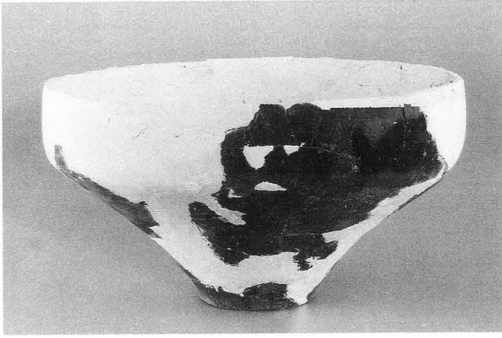
SB-94  
1



SB-93  
12



SB-94  
2



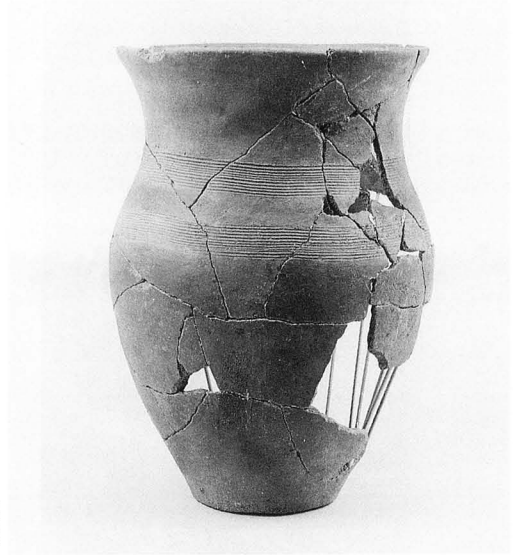
SB-94  
3



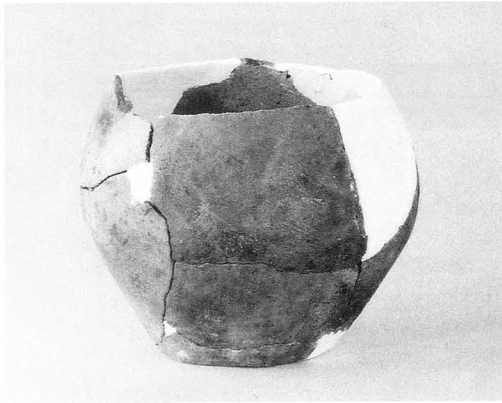
SB-94  
11



SB-94  
4



SB-94  
12



SB-94  
5



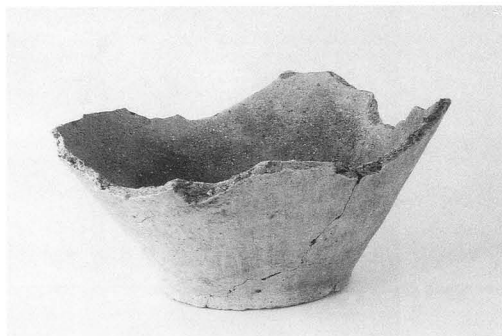
SB-94  
13



SB-94  
6 9  
7 10



SB-94  
14



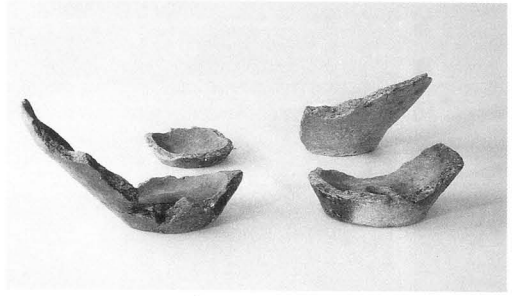
SB-94  
8



SB-94  
15



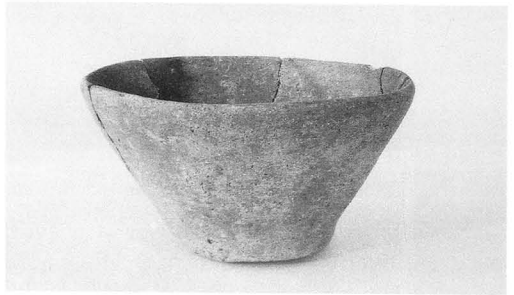
SB-94  
16



SB-94  
26 25  
21 27



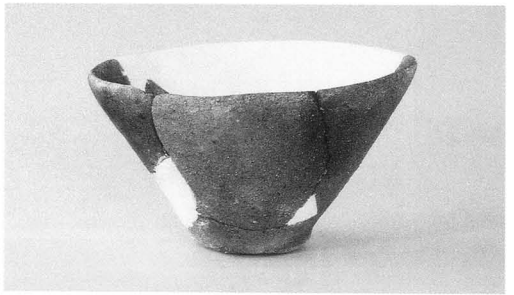
SB-94  
17



SB-94  
22



SB-94  
18



SB-94  
23



SB-94  
19



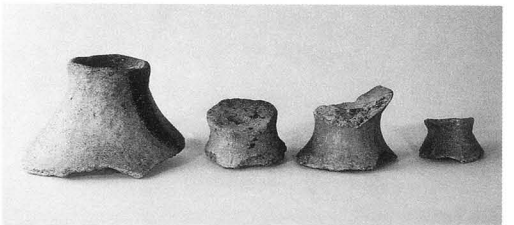
SB-94  
24



SB-94  
20



SB-94  
28



SB-94  
29 30 31 32

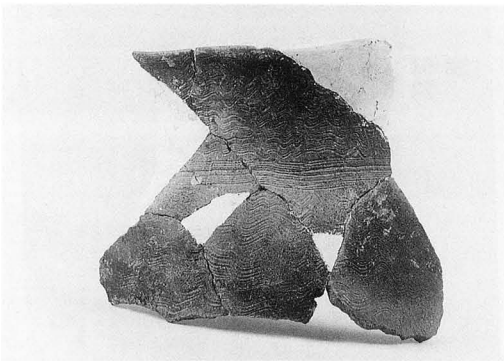




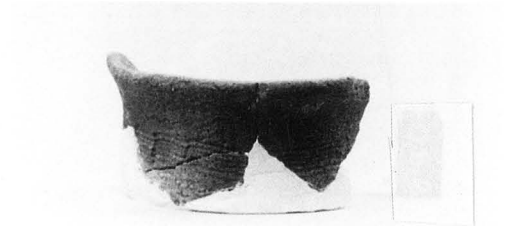
SB-94  
33



SB-94  
38



SB-94  
34



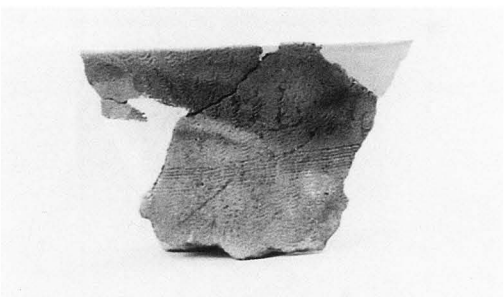
SB-94  
39



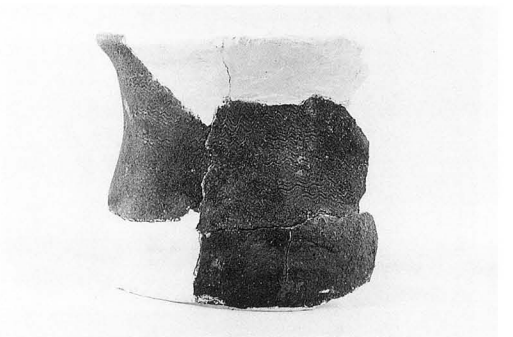
SB-94  
35



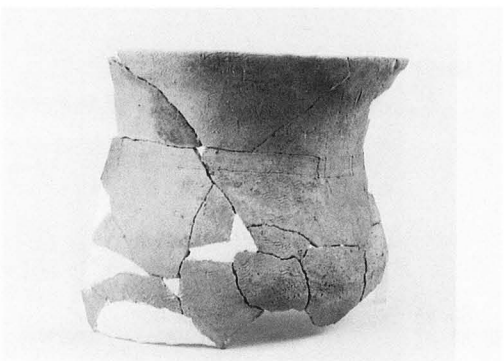
SB-94  
40



SB-94  
36



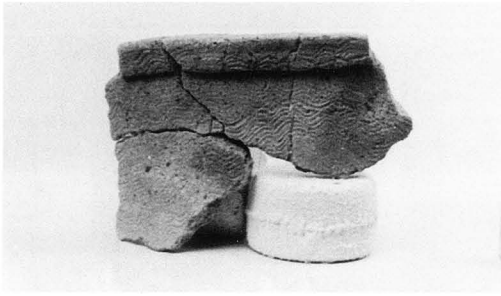
SB-94  
41



SB-94  
37



SB-94  
42



SB-94  
43



SB-95  
1



SB-94  
44



SB-95  
2



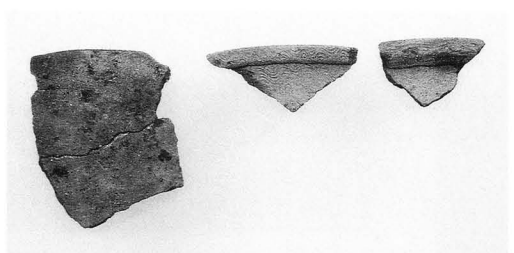
SB-94  
45 46



SB-95  
3



SB-94  
47



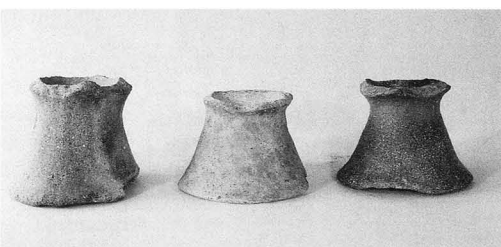
SB-95  
4 12 13



SB-94  
48 49



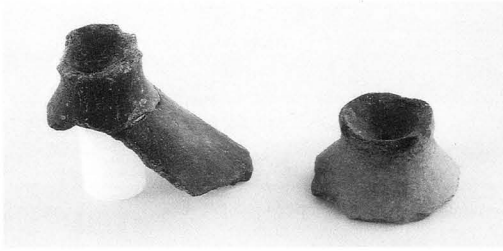
SB-95  
5 6



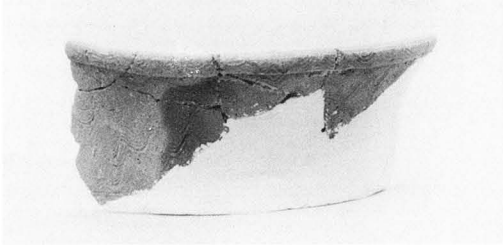
SB-94  
50 51 52



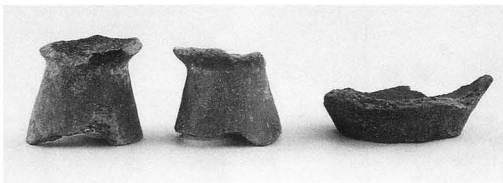
SB-95  
7 8



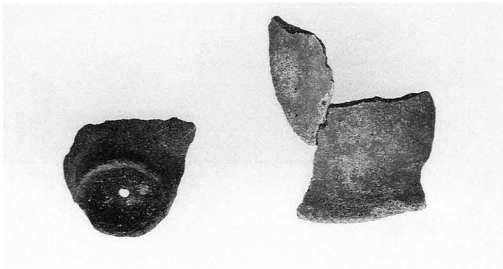
SB-95  
9 10



SB-95  
11



SB-96  
1 2 6



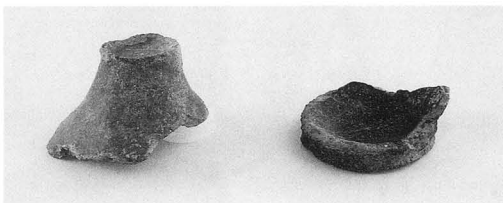
SB-96  
5 3



SB-96  
4



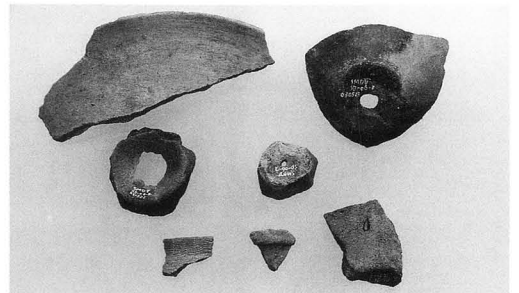
SB-97  
2



SB-98  
1 2



SB-97  
1



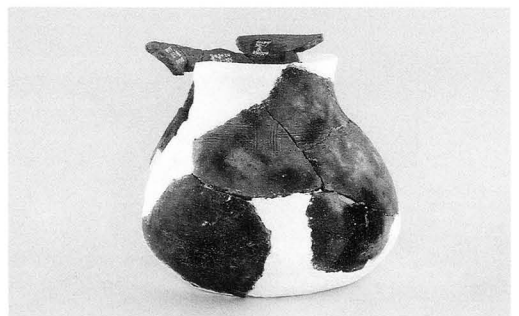
1 2  
3 4  
5 6 7  
SD-06



SE-01  
1

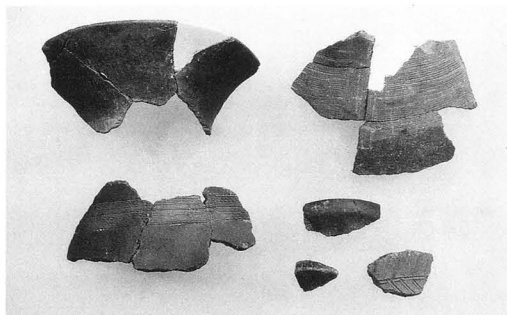


SE-01  
2

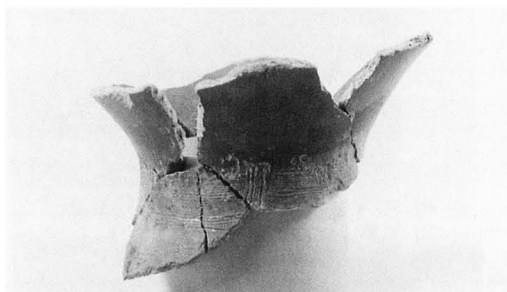


SE-01  
3

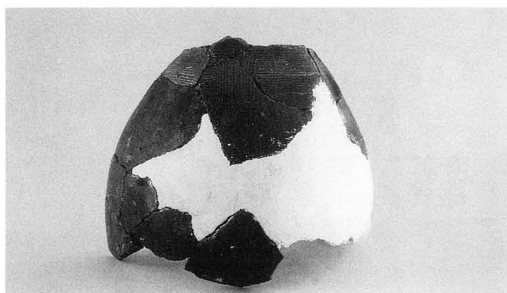




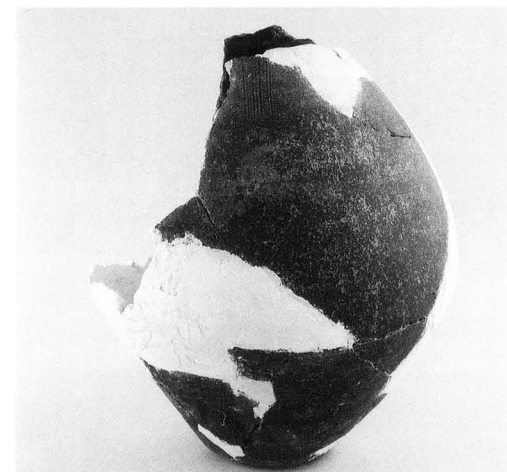
SE-01  
4 7  
10 34  
36 35



SE-01  
5



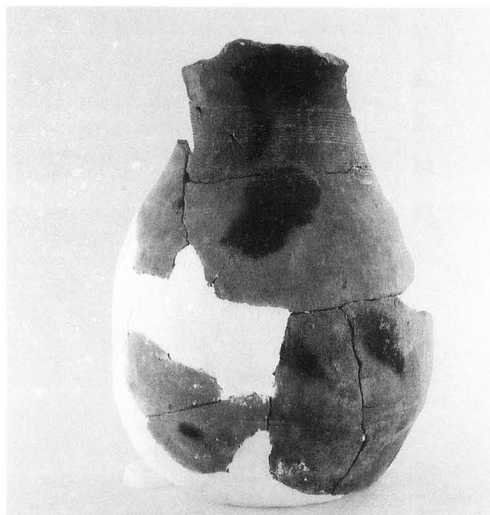
SE-01  
6



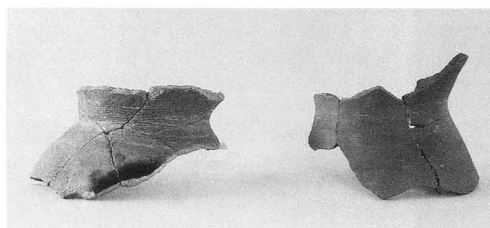
SE-01  
8



SE-01  
9



SE-01  
11



SE-01  
12 13



SE-01  
14



SE-01  
15



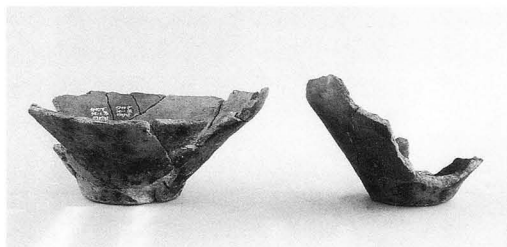
SE-01  
16



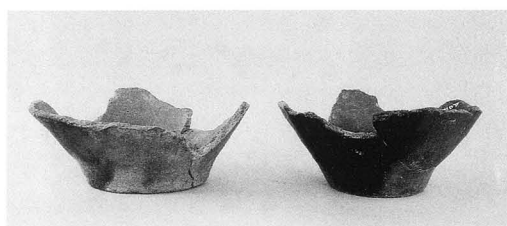
SE-01  
17



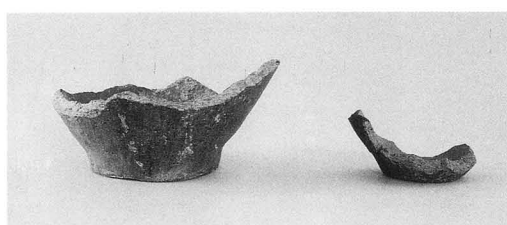
SE-01  
18



SE-01  
19 20



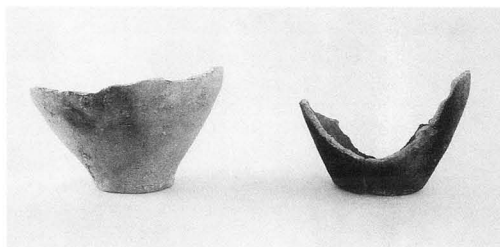
SE-01  
21 22



SE-01  
23 24



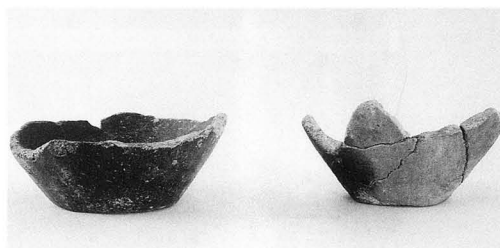
SE-01  
25



SE-01  
26 28



SE-01  
27



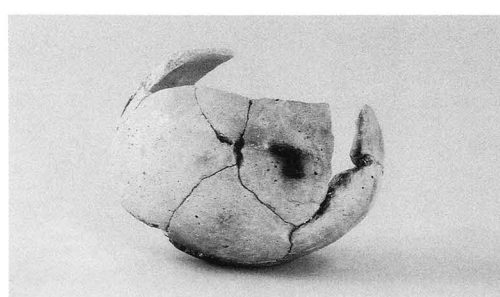
SE-01  
29 30



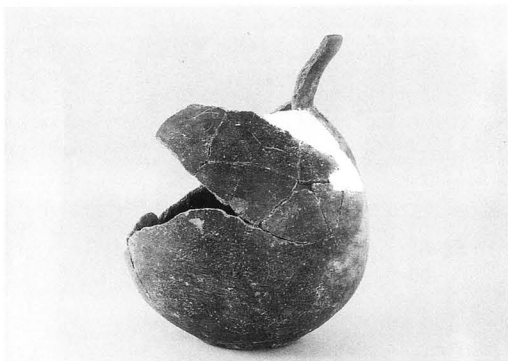
SE-01  
31



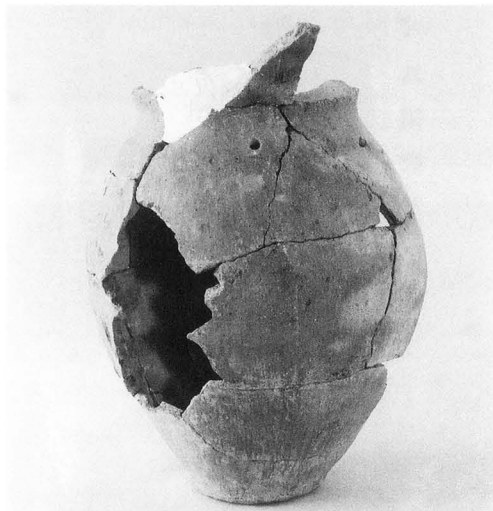
SE-01  
32



SE-01  
33



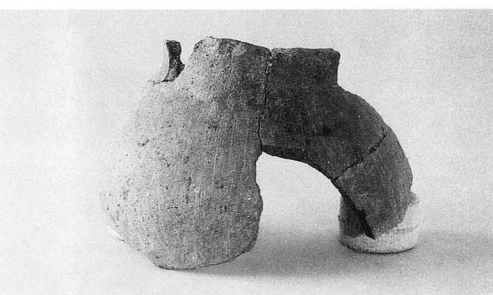
SE-01  
37



SE-01  
46



SE-01  
38



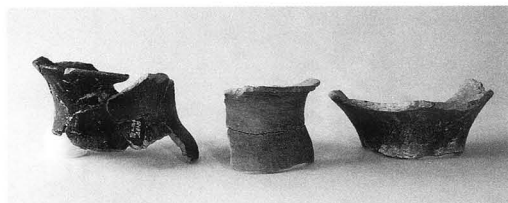
SE-01  
47



SE-01  
39



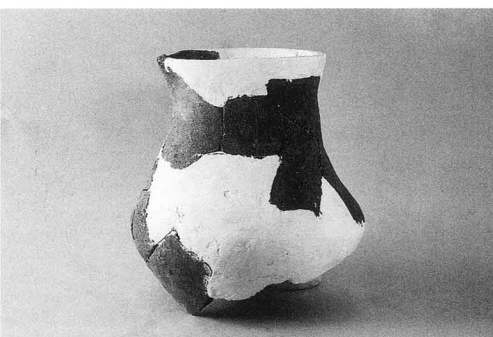
SE-01  
48



SE-01  
40 41 42



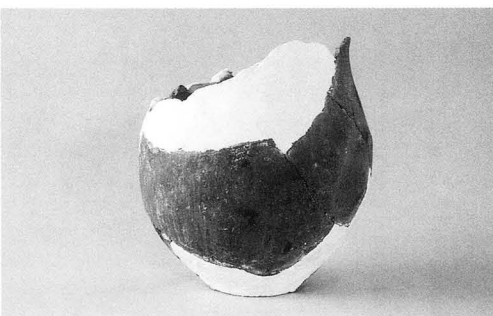
SE-01  
43 44  
60



SE-01  
49



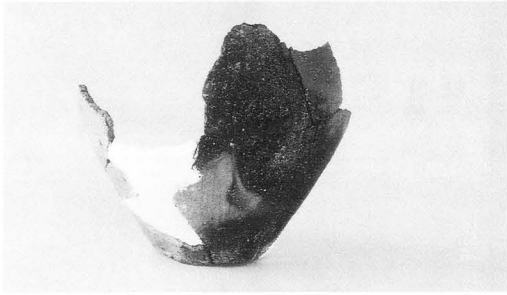
SE-01  
45



SE-01  
50



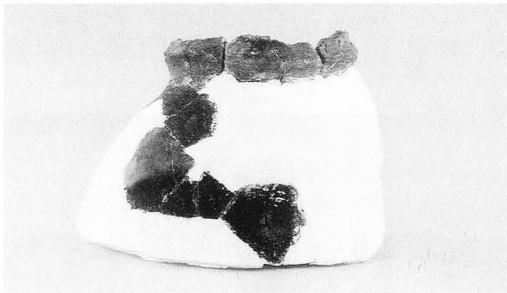
SE-01  
51



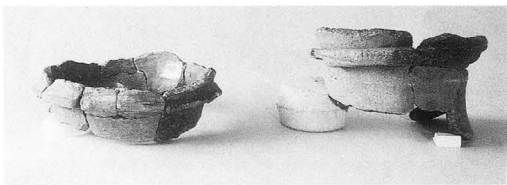
SE-01  
52



SE-01  
53



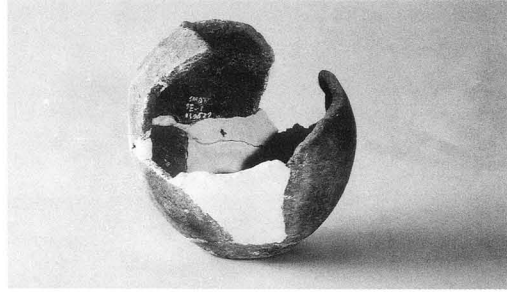
SE-01  
54



SE-01  
55 56



SE-01  
57



SE-01  
58



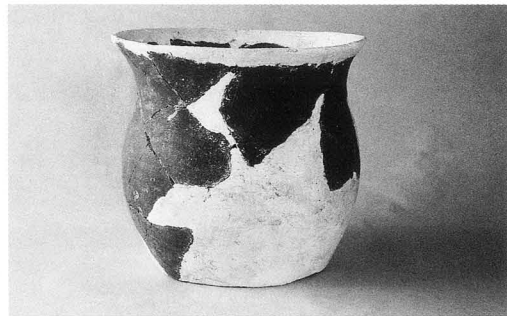
SE-01  
59



SE-01  
61



SE-01  
62

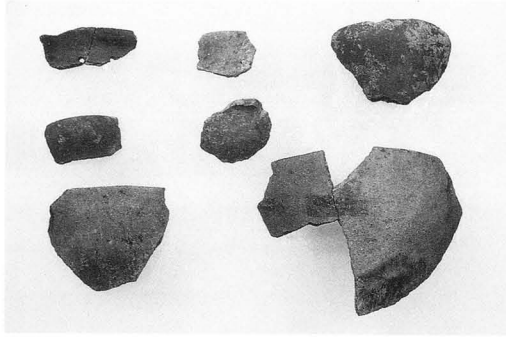


SE-01  
63

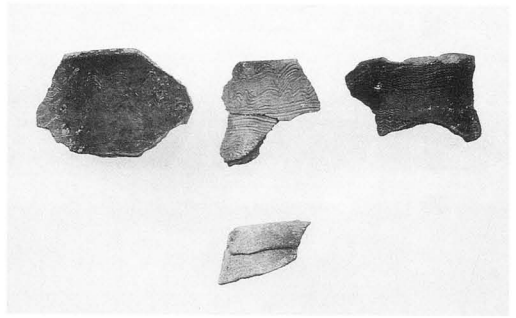


SE-01  
66





SE-01  
64 65 68  
69 70  
74 73



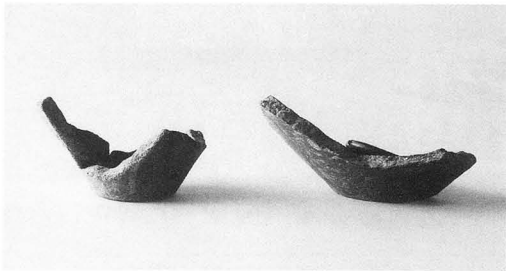
SE-01  
81 82 88  
89



SE-01  
67



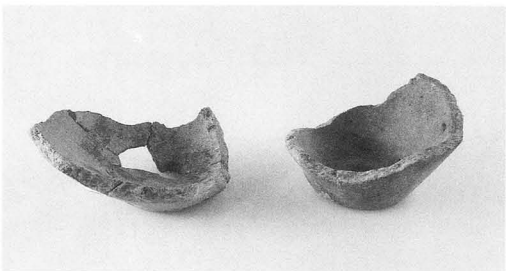
SE-01  
83



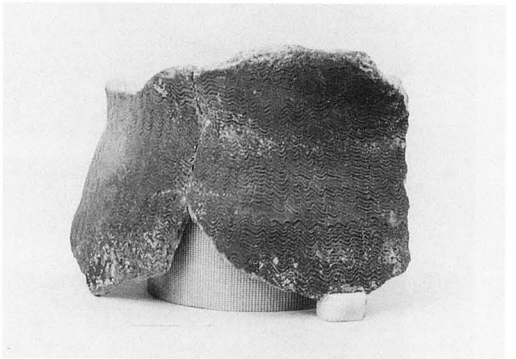
SE-01  
71 72



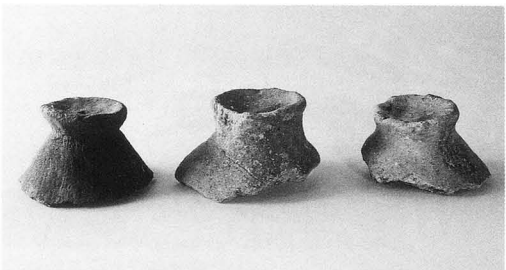
SE-01  
84



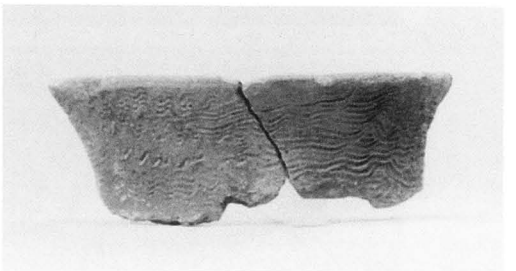
SE-01  
75 76



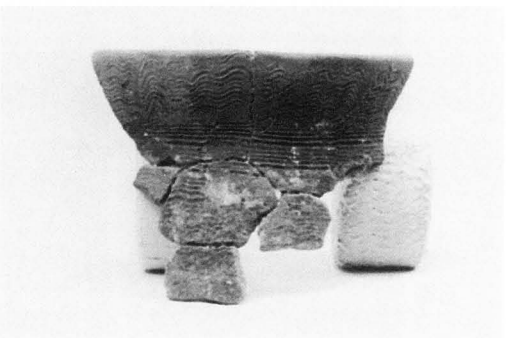
SE-01  
85



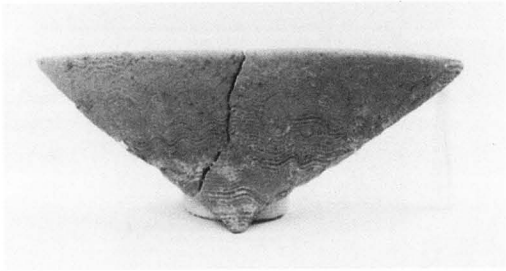
SE-01  
77 78 79



SE-01  
86



SE-01  
80



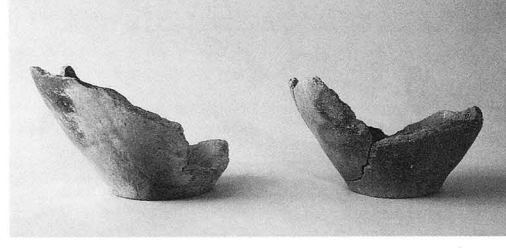
SE-01  
87



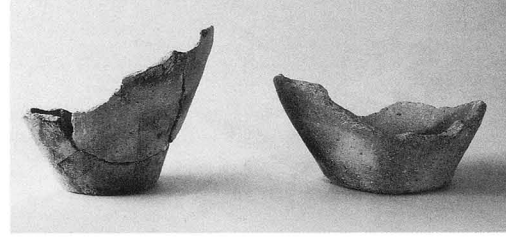
SE-01  
90



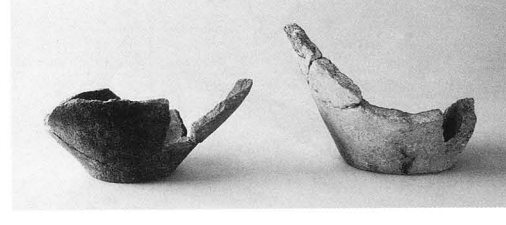
SE-01  
91



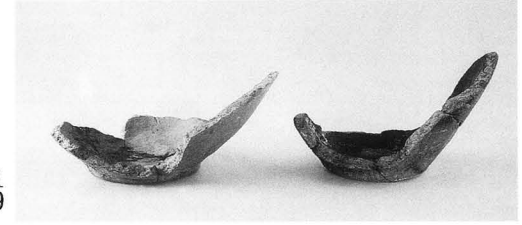
SE-01  
92 93



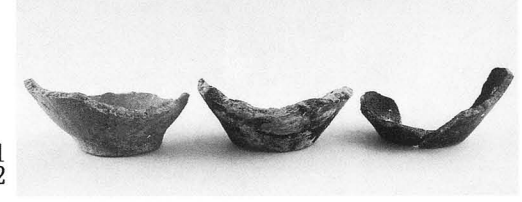
SE-01  
94 95



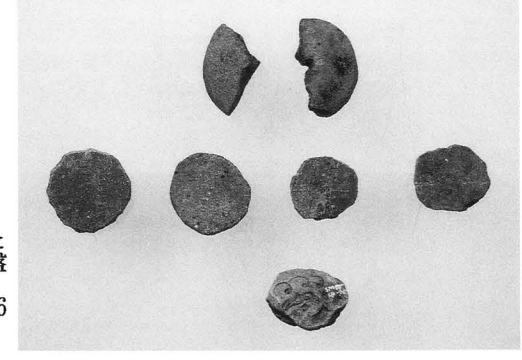
SE-01  
96 97



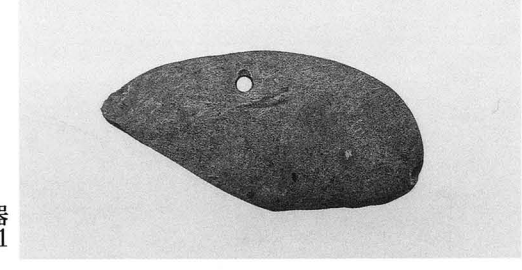
SE-01  
98 99



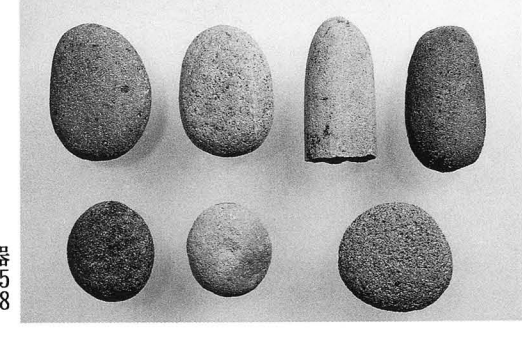
SE-01  
100 101 102



紡錘車と  
土製円盤  
1 2  
3 4 5 6  
7



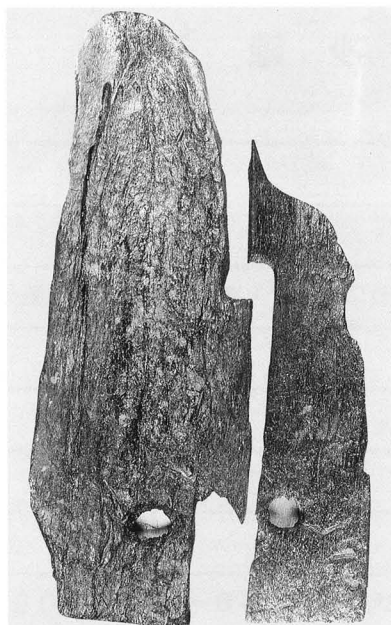
石器  
1



石器  
2 3 4 5  
6 7 8



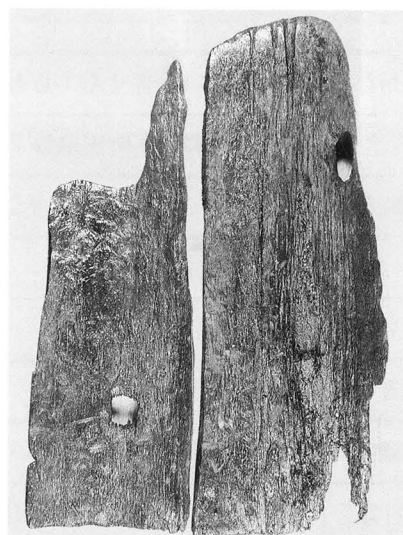
石器  
9



SE-01  
井戸木樺  
(内面)

1

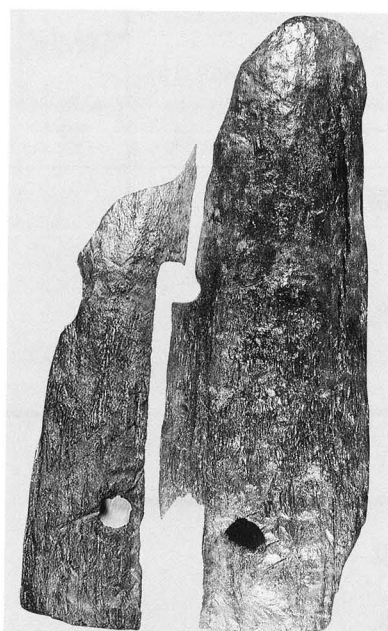
2



SE-01  
井戸木樺  
(内面)

3

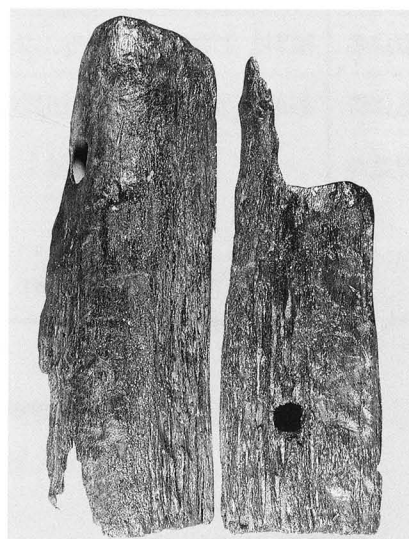
4



SE-01  
井戸木樺  
(外面)

2

1



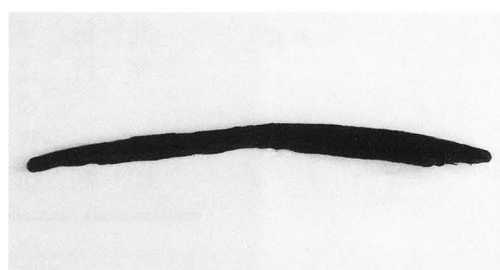
SE-01  
井戸木樺  
(外面)

4

3



SE-01  
果核類種子



SE-01  
針葉樹枝

# 報 告 書 抄 録

ふりがな	ときいりいせきぐん しもまちだいせき						
書 名	常入遺跡群 下町田遺跡V						
副 書 名	信州大学ベンチャービジネスラボラトリー棟建設に伴う常入遺跡群下町田遺跡第5次発掘調査報告書						
シリーズ名	上田市文化財調査報告書						
シリーズ番号	第96集						
編著者名	久保田敦子						
編集機関	上田市教育委員会						
所 在 地	〒386-0025 長野県上田市天神二丁目4番74号 Tel0268-22-4100						
発行年月日	西暦2004年3月15日						
所収遺跡名	所 在 地	市町村コード	北緯°′″	東経°′″	調 査 期 間	調査面積	調 査 原 因
ときいりいせきぐん 常入遺跡群 しもまちだいせき 下町田遺跡	うえだしときださんちようめ 上田市常田三丁目 15ばん1ごう 15番1号	20203	36° 23′ 21″	138° 16′ 02″	平成15年4月21日～ 平成15年7月9日	544.5㎡	信州大学ベン チャービジネスラ ボラトリー棟建設 工事
所収遺跡名	種別	主な時代	主 な 遺 構	主 な 遺 物	特 記 事 項		
常入遺跡群 下町田遺跡	集落	弥生時代	竪穴住居址15 井戸跡1 土坑1 ピット41、溝跡1	弥生土器 土製品 石包丁等			

上田市文化財調査報告書第96集

## 常入遺跡群 下町田遺跡V

信州大学ベンチャービジネスラボラトリー棟の建設工事に  
係る常入遺跡群下町田遺跡第5次発掘調査報告書

発行日 平成16年3月15日

発 行 上田市教育委員会

長野県上田市天神二丁目4番74号

TEL. 0268-22-4100

印 刷 田口印刷株式会社