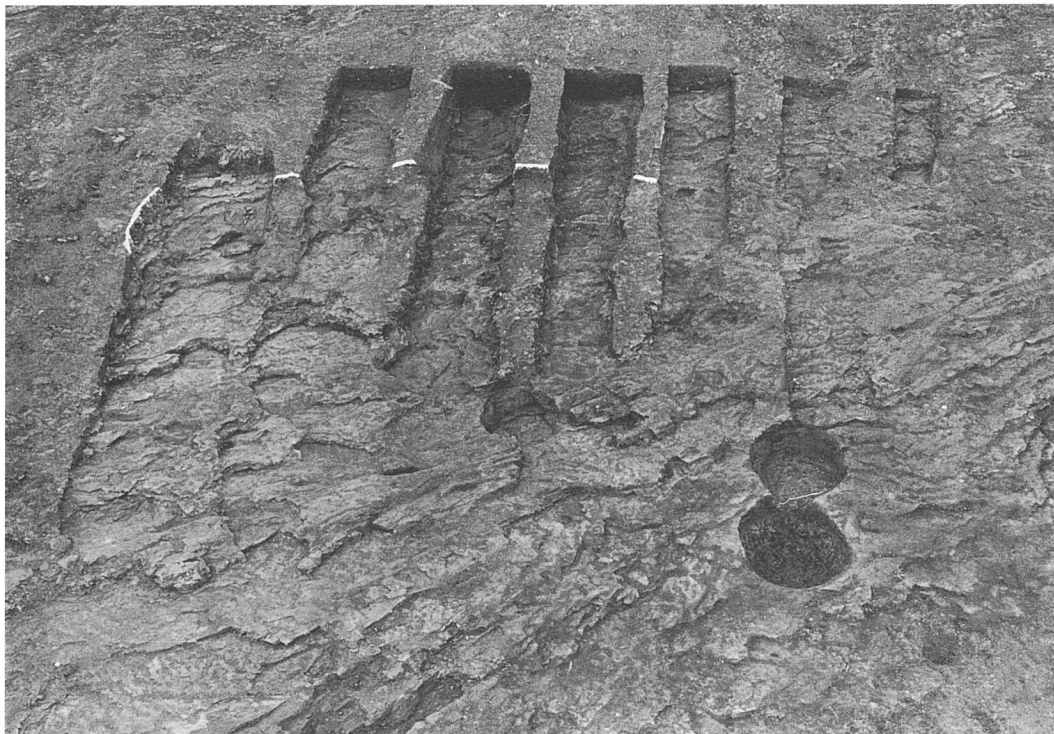


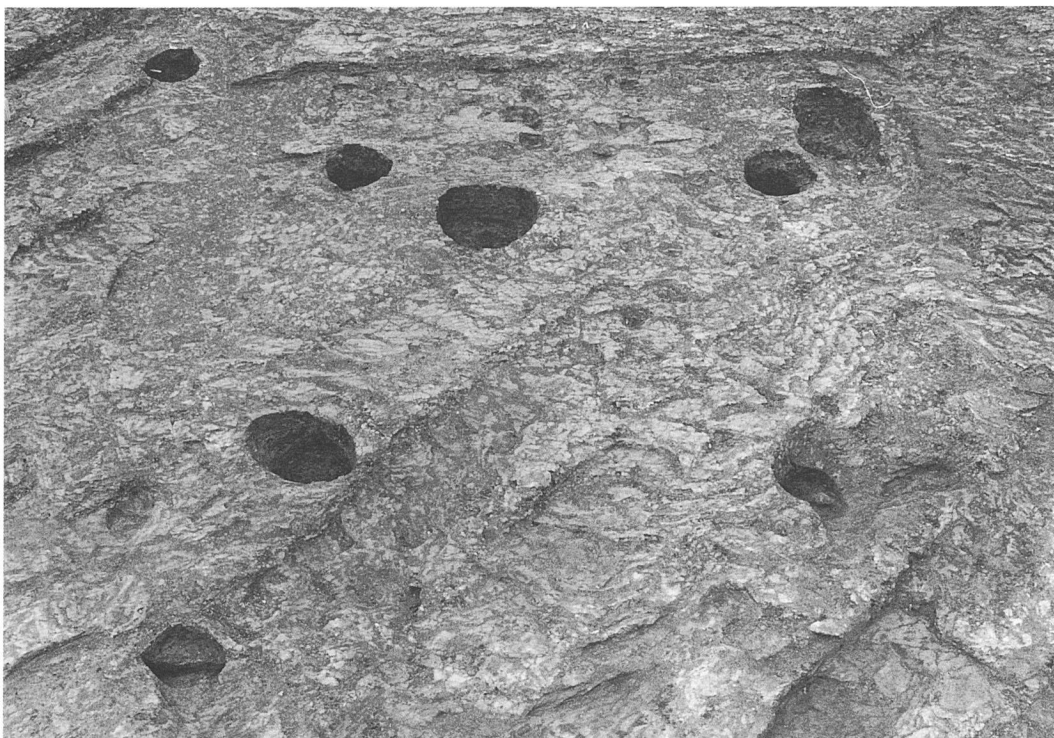
① IH19号住居址全景(西より)



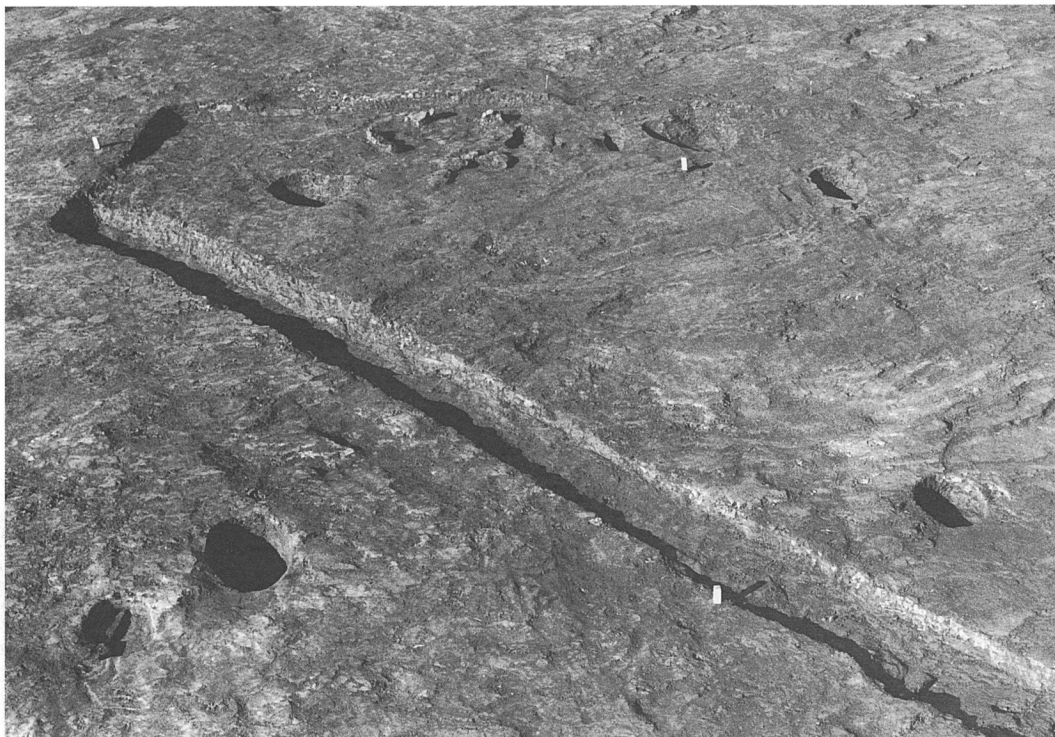
② IH19号住居址カマド全景(南より)



① I H22号住居址全景(南より)



② I H23号住居址全景(南より)



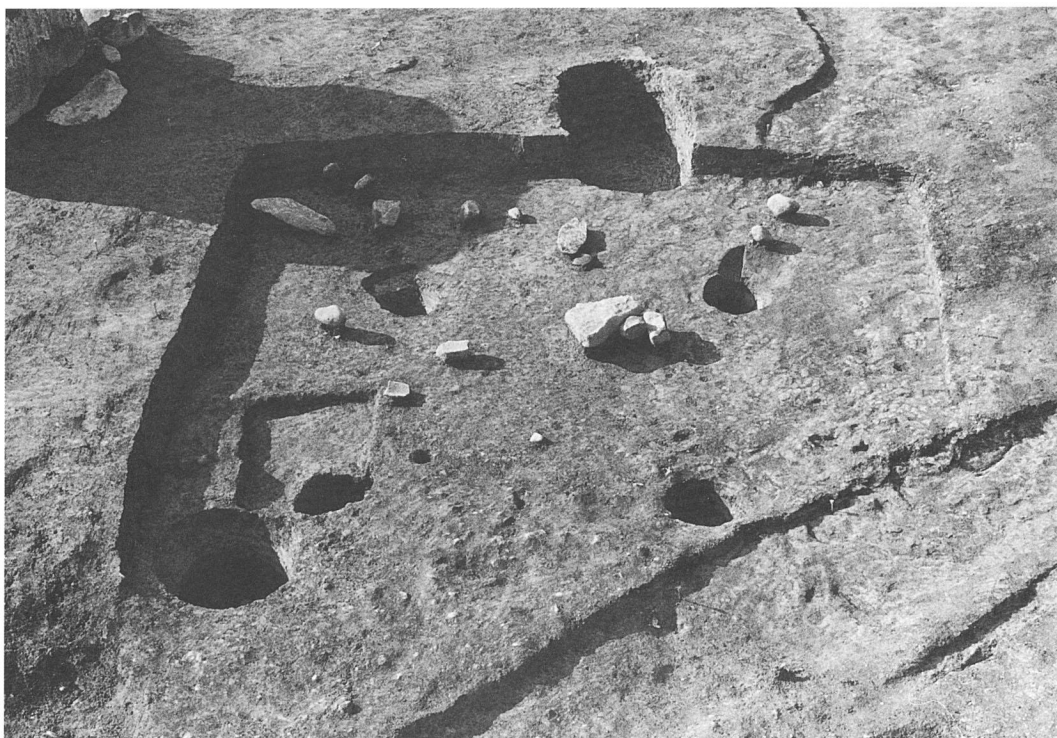
① IH26号住居址全景(南より)



② IH26号住居址カマド掘り方全景(南より)



① I H28号住居址全景(南より)



② I H29号住居址全景(北より)



① I H35号住居址全景(南より)



② I H35号住居址北東コーナーピット全景(西より)



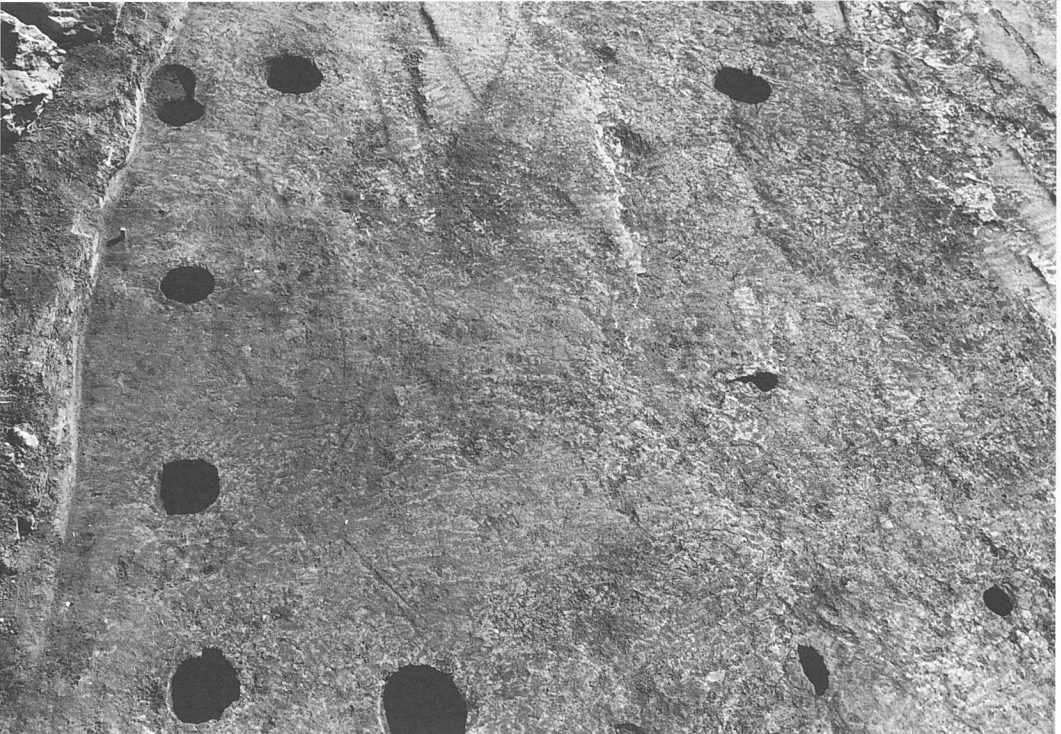
① IH35号住居址北壁カマド全景(南より)



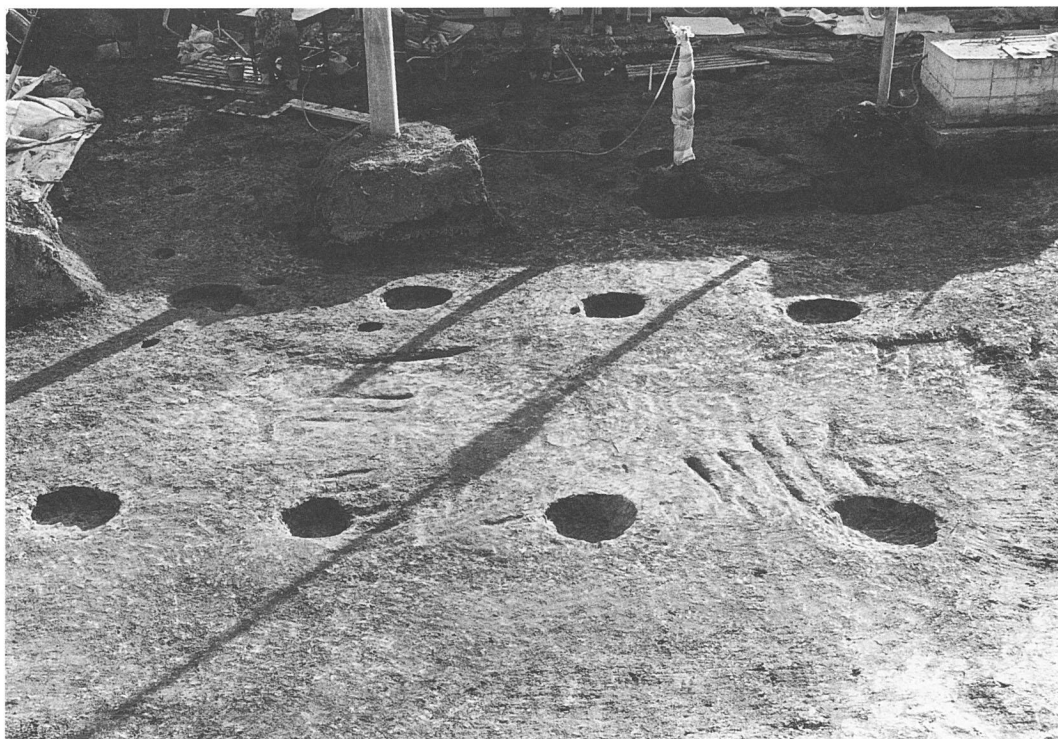
② IH35号住居址東壁カマド全景(西より)



① IF1号掘立柱建物址全景(北より)



② IF2号掘立柱建物址全景(西より)



① IF5号掘立柱建物址全景(北より)



② I区古墳集落址全景





①坪の内古墳調査前風景(南より)



②坪の内古墳石室上礫除去風景(東より)



①坪の内古墳石室及び周溝検出状況(西より)



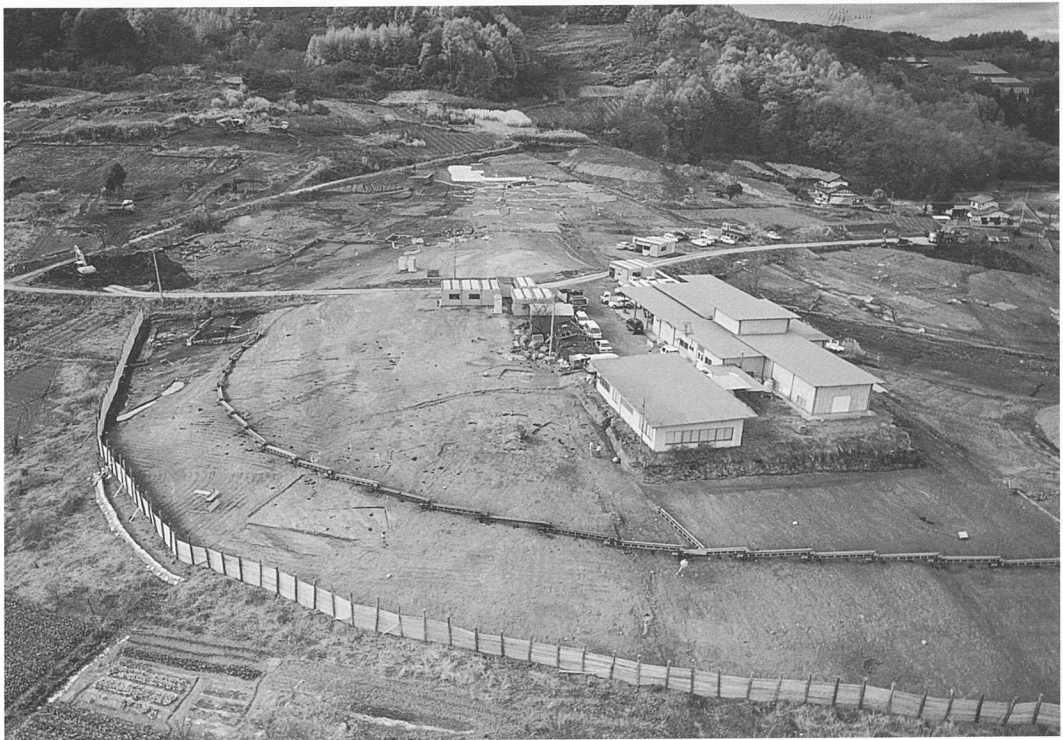
②坪の内古墳奥壁検出状況(南より)



①坪の内古墳全景



①坪の内古墳石室礎床検出状況(西より)



②調査区を東側より望む



①榛名平1号墳調査前風景(南より)



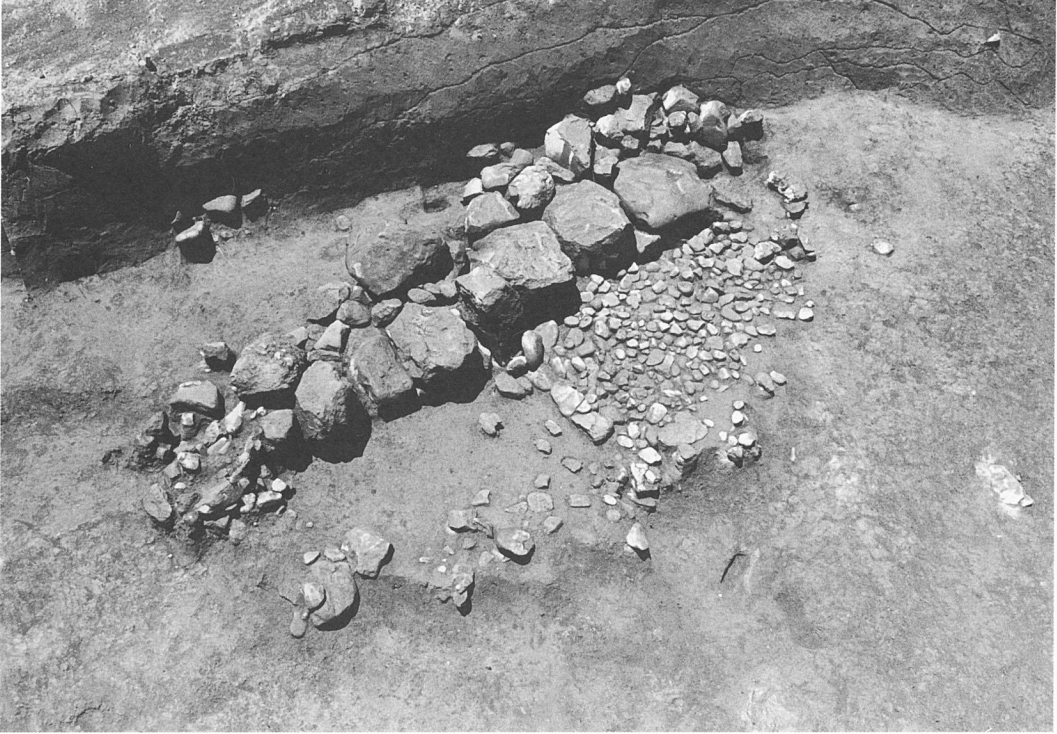
②榛名平1号墳磔検出状況(南より)



①榛名平1号墳石室検出状況(南より)



②榛名平1号墳石室礎検出状況(西より)



① 榛名平1号墳石室全景(東より)



② 榛名平1号墳石室羨道部検出状況(南より)

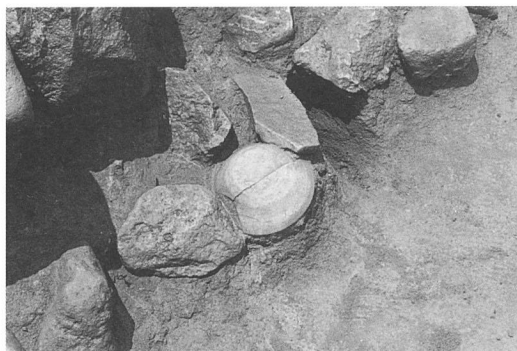


① 榛名平1号墳石室左側壁全景(東より)



② 榛名平1号墳石室玄室部検出状況(南東より)





① 榛名平1号墳遺物出土状況・須恵器



② 榛名平1号墳遺物出土状況・刀子



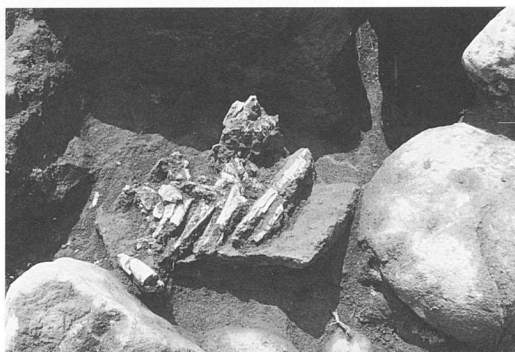
③ 榛名平1号墳遺物出土状況・鉄鋏



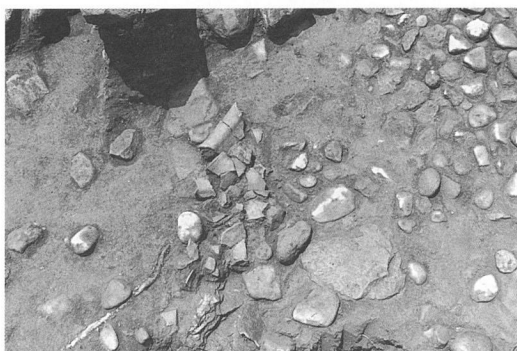
④ 榛名平1号墳遺物出土状況・鉄鋏



⑤ 榛名平1号墳人骨出土状況



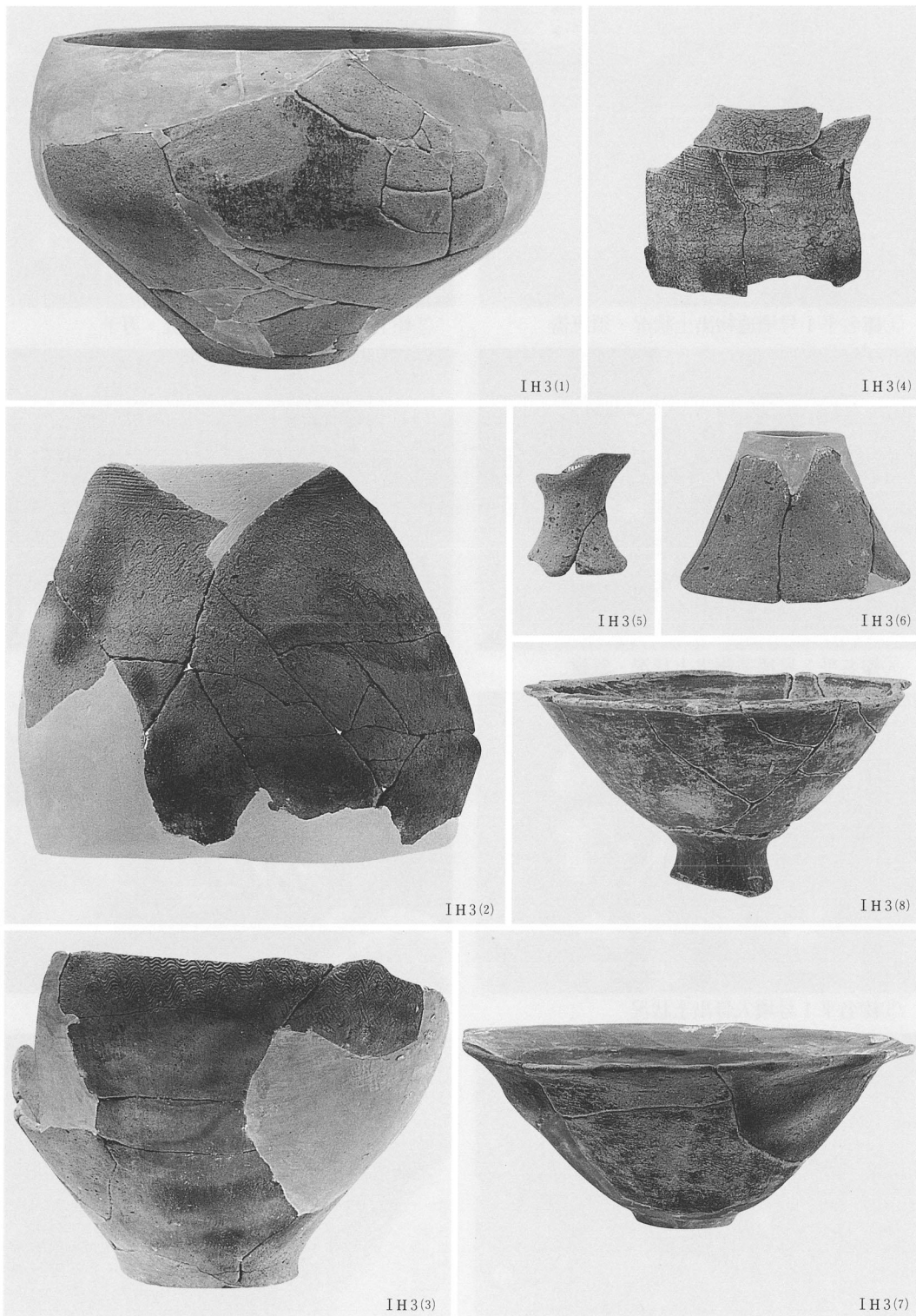
⑥ 榛名平1号墳人骨出土状況



⑦ 榛名平1号墳遺物出土状況・土師器甕



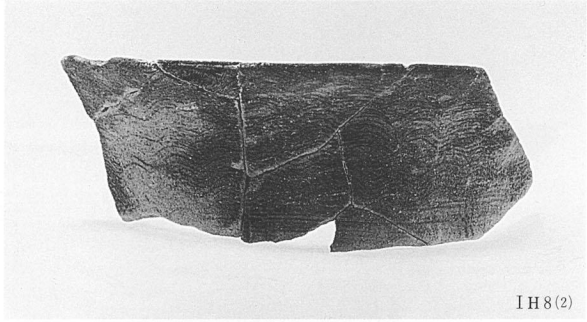
⑧ 榛名平1号墳奥壁掘り方検出状況



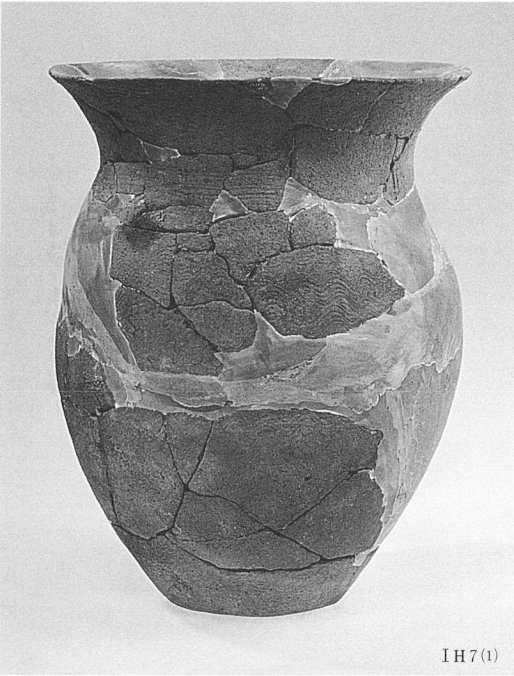
IH3号住居址出土遺物



IH5(1)



IH8(2)



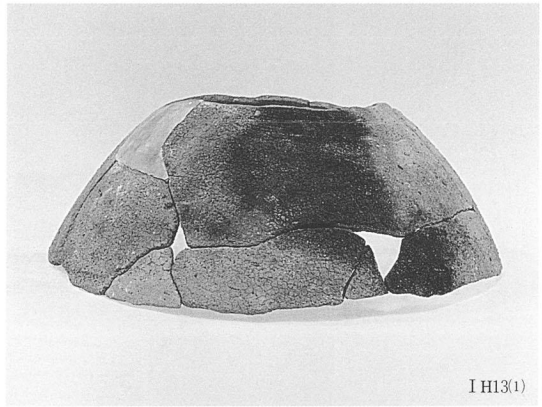
IH7(1)



IH8(3)



IH8(4)



IH13(1)

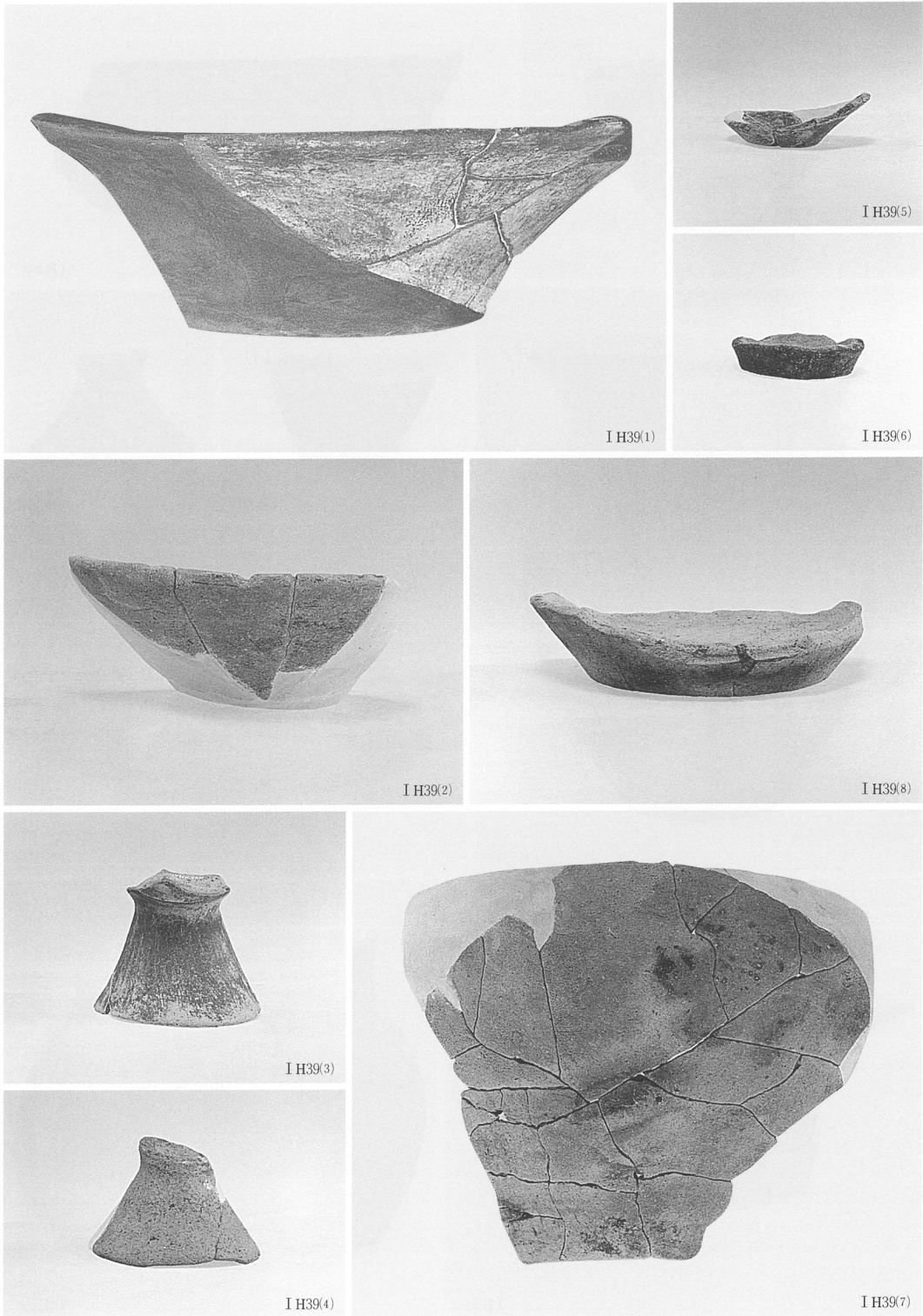


IH8(1)

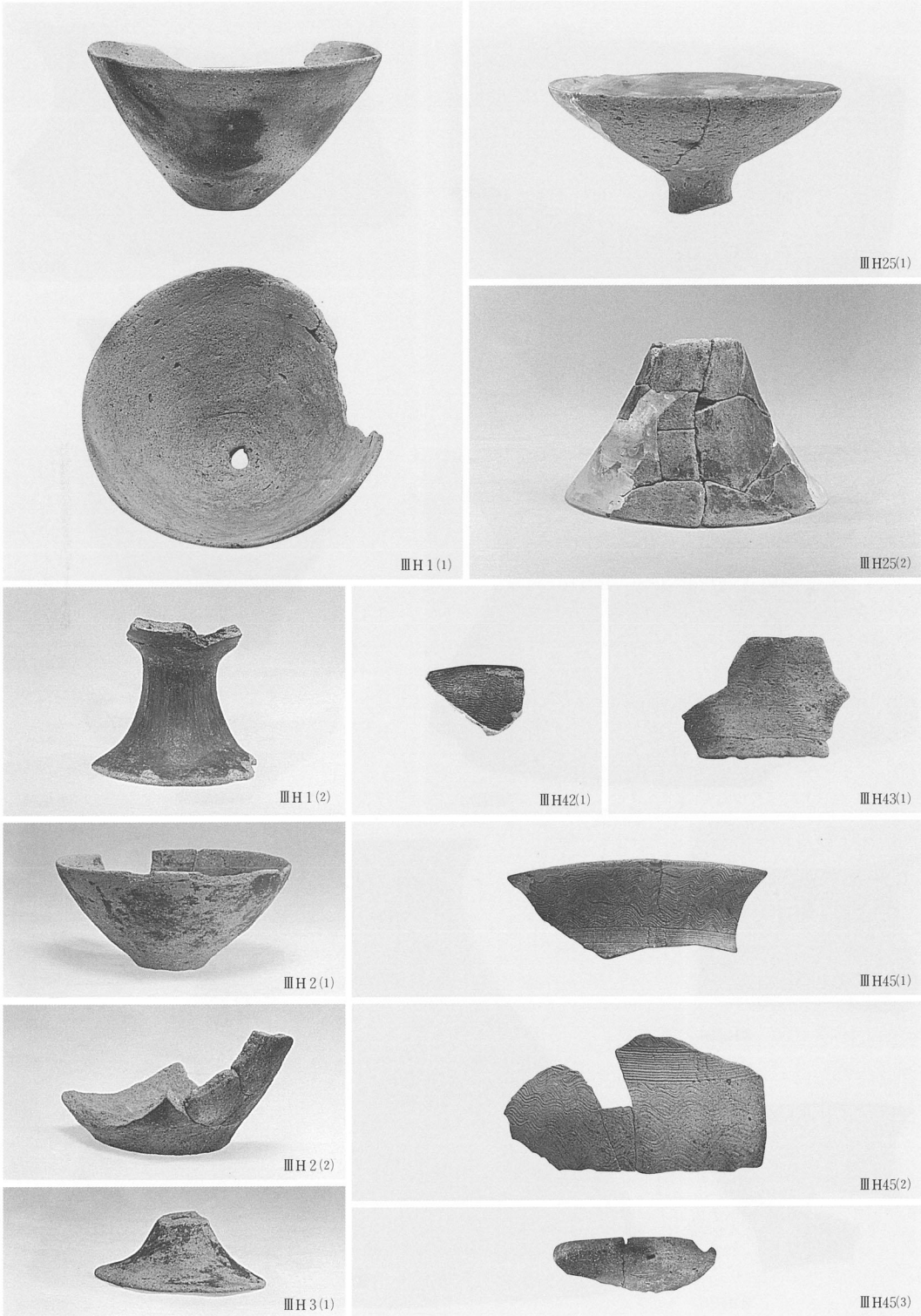


IH13(2)

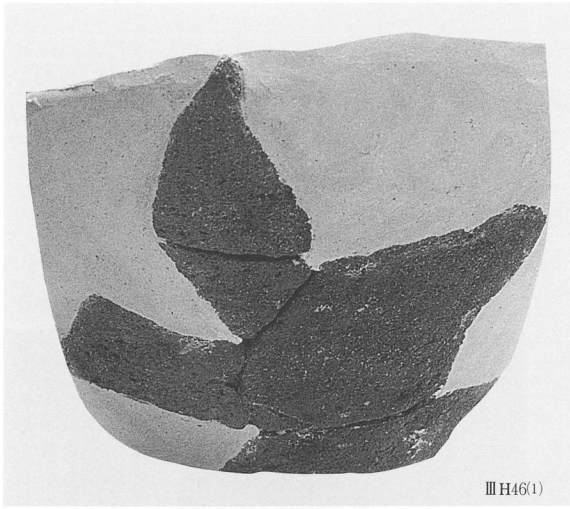
IH5・7・8・13号住居址出土遺物



I H39号住居址出土遺物



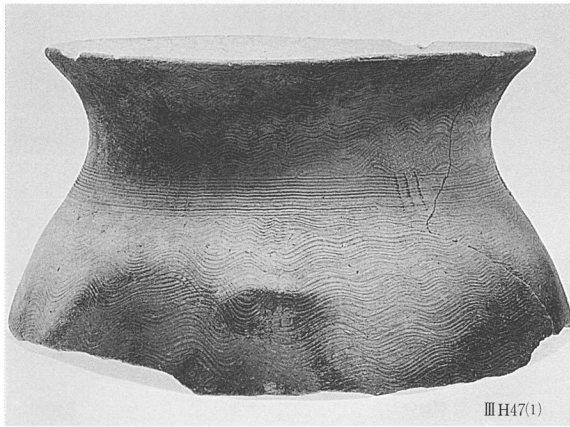
III H 1・2・3・25・42・43・45号住居址出土遺物



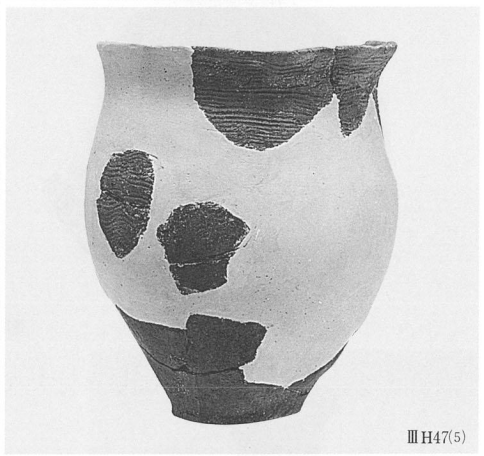
Ⅲ H46(1)



Ⅲ H47(2)



Ⅲ H47(1)



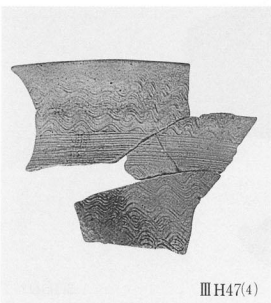
Ⅲ H47(5)



Ⅲ H47(6)



Ⅲ H47(3)



Ⅲ H47(4)

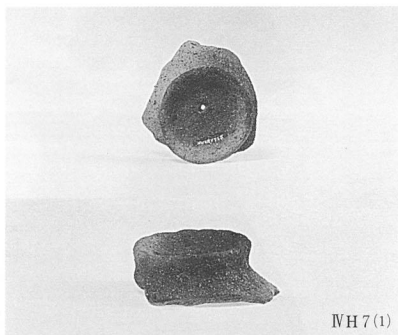


Ⅲ H47(7)

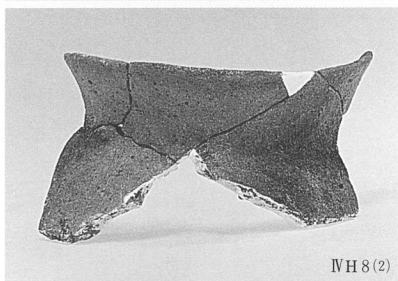
Ⅲ H46・47号住居址出土遺物



ⅢH48(1)



ⅣH7(1)



ⅣH8(2)



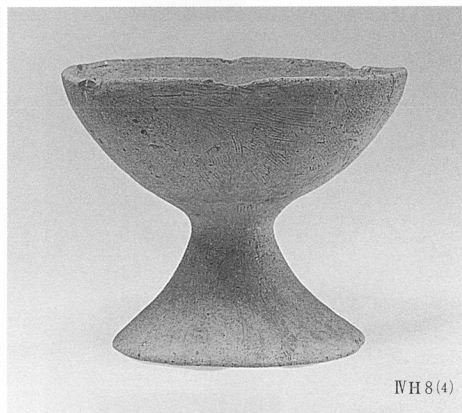
ⅢH49(1)



ⅣH6(1)



ⅣH6(2)



ⅣH8(4)



ⅣH8(3)

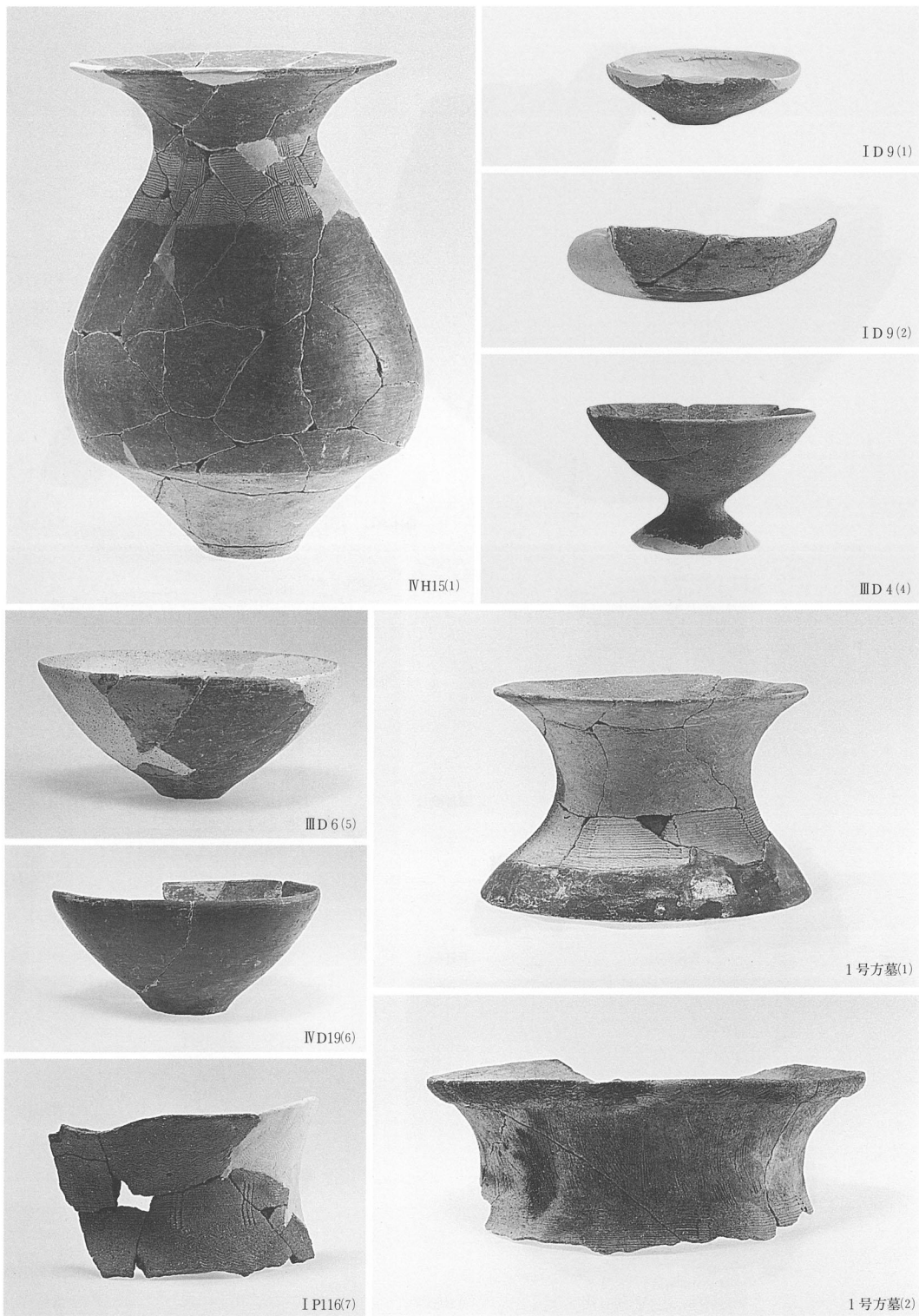


ⅣH8(1)



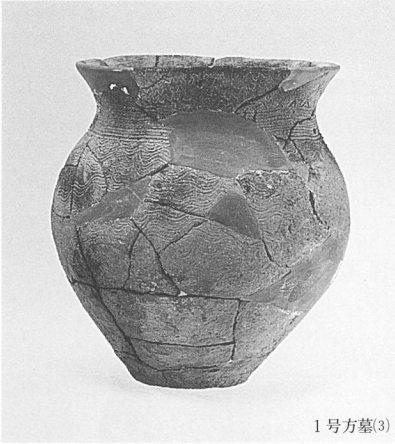
ⅣH8(5)

ⅢH48・49・ⅣH6・7・8号住居址出土遺物

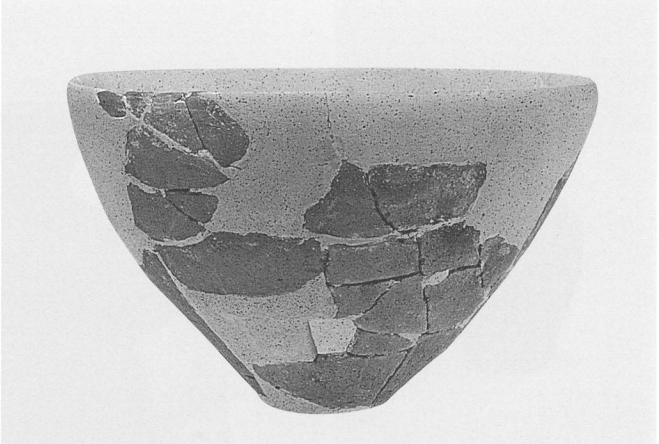


IVH15号住居址 ID9·IID4·6·IVD19·I P116·1号方形周溝墓出土遺物





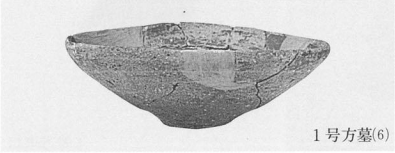
1号方墓(3)



1号方墓(4)



1号方墓(5)



1号方墓(6)

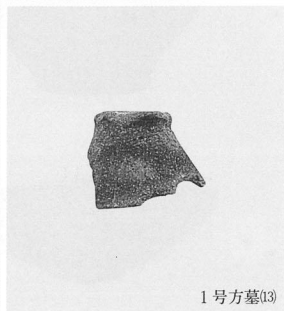
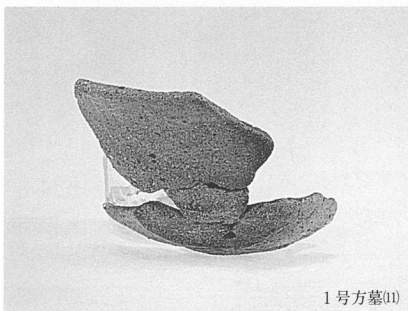
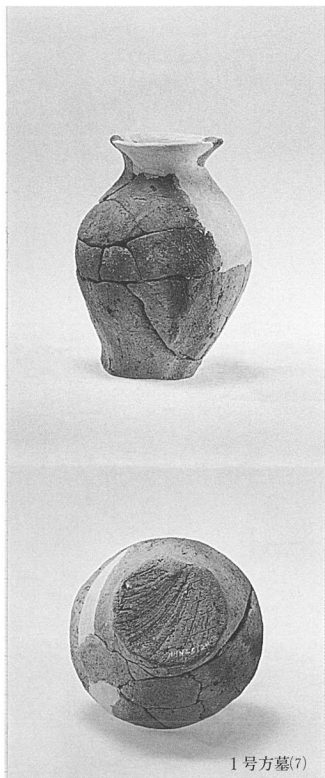


1号方墓(10)



1号方墓(9)

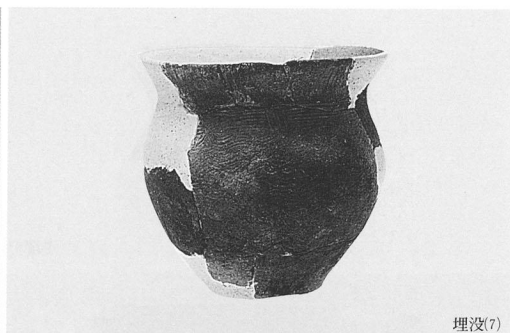
1号方形周溝墓出土遺物



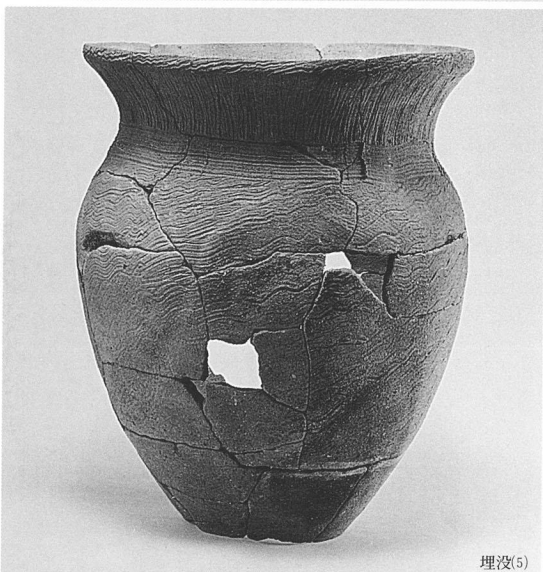
1号方形周溝墓・埋没谷出土遺物



埋没(3)



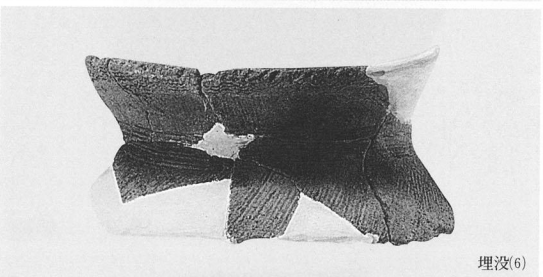
埋没(7)



埋没(5)



埋没(8)



埋没(6)



埋没(10)

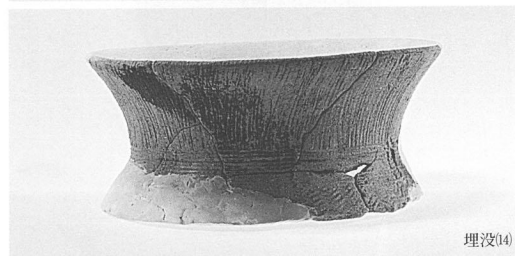
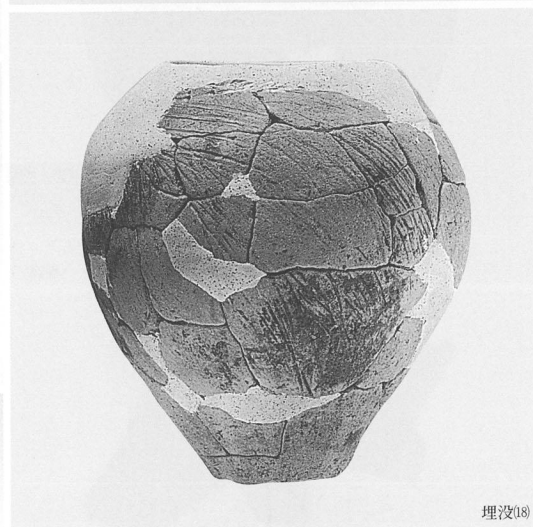
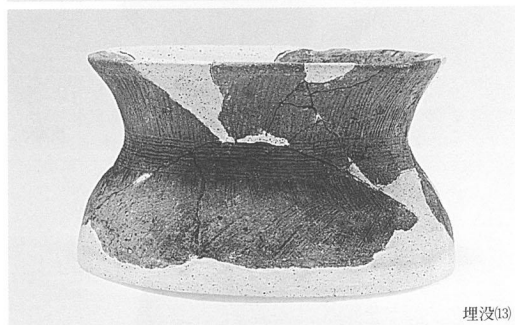
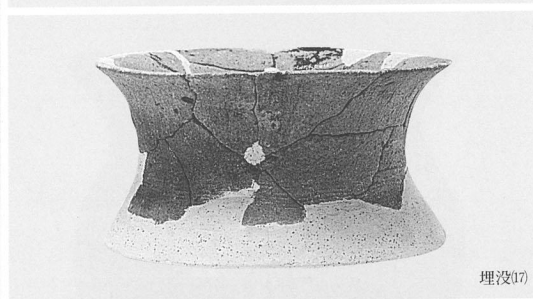
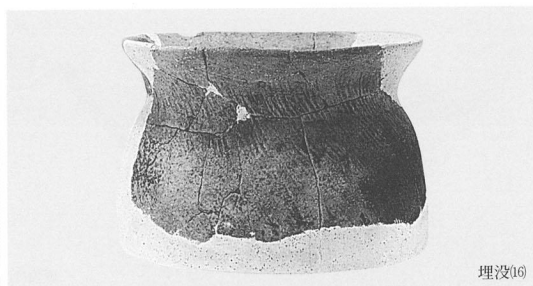
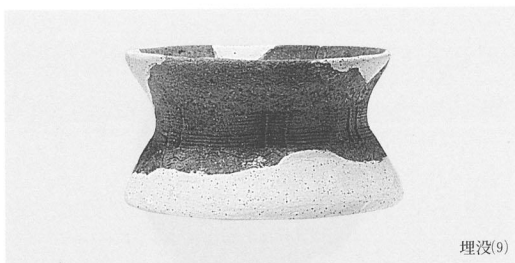


埋没(4)

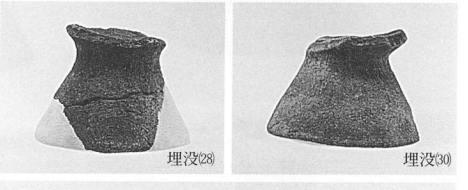
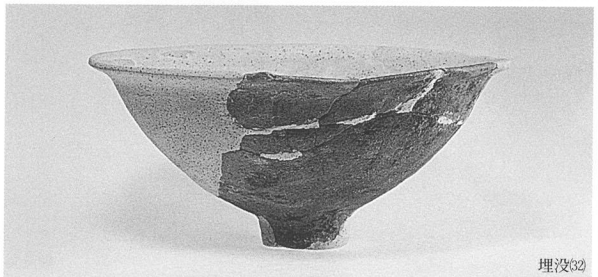
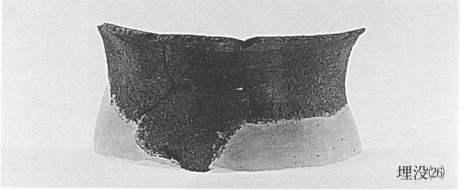
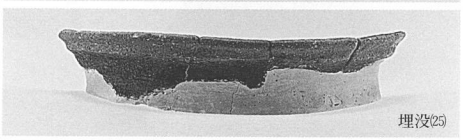
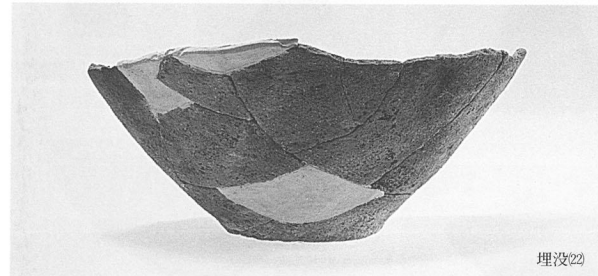
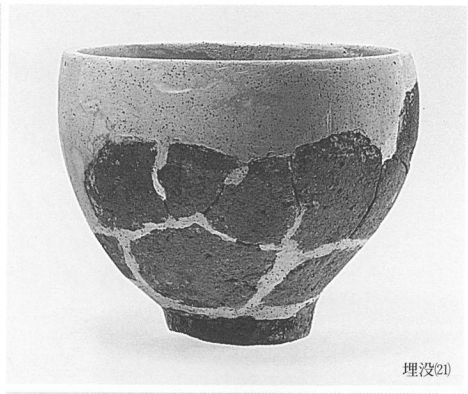


埋没(11)

埋没谷出土遺物②



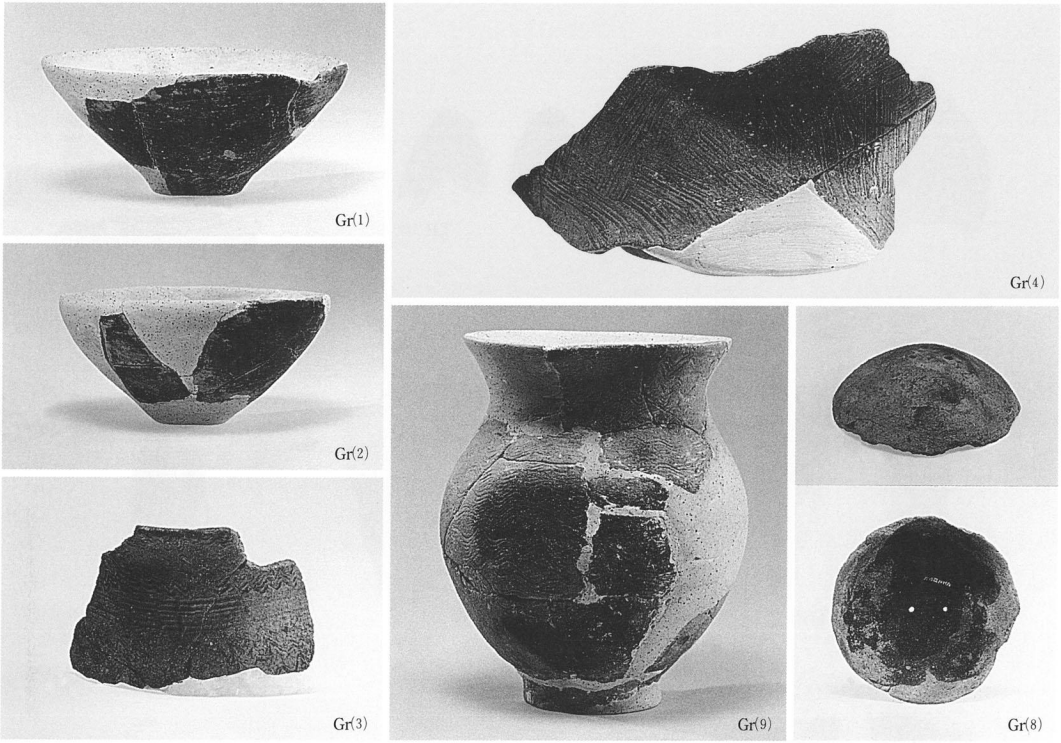
埋没谷出土遺物③



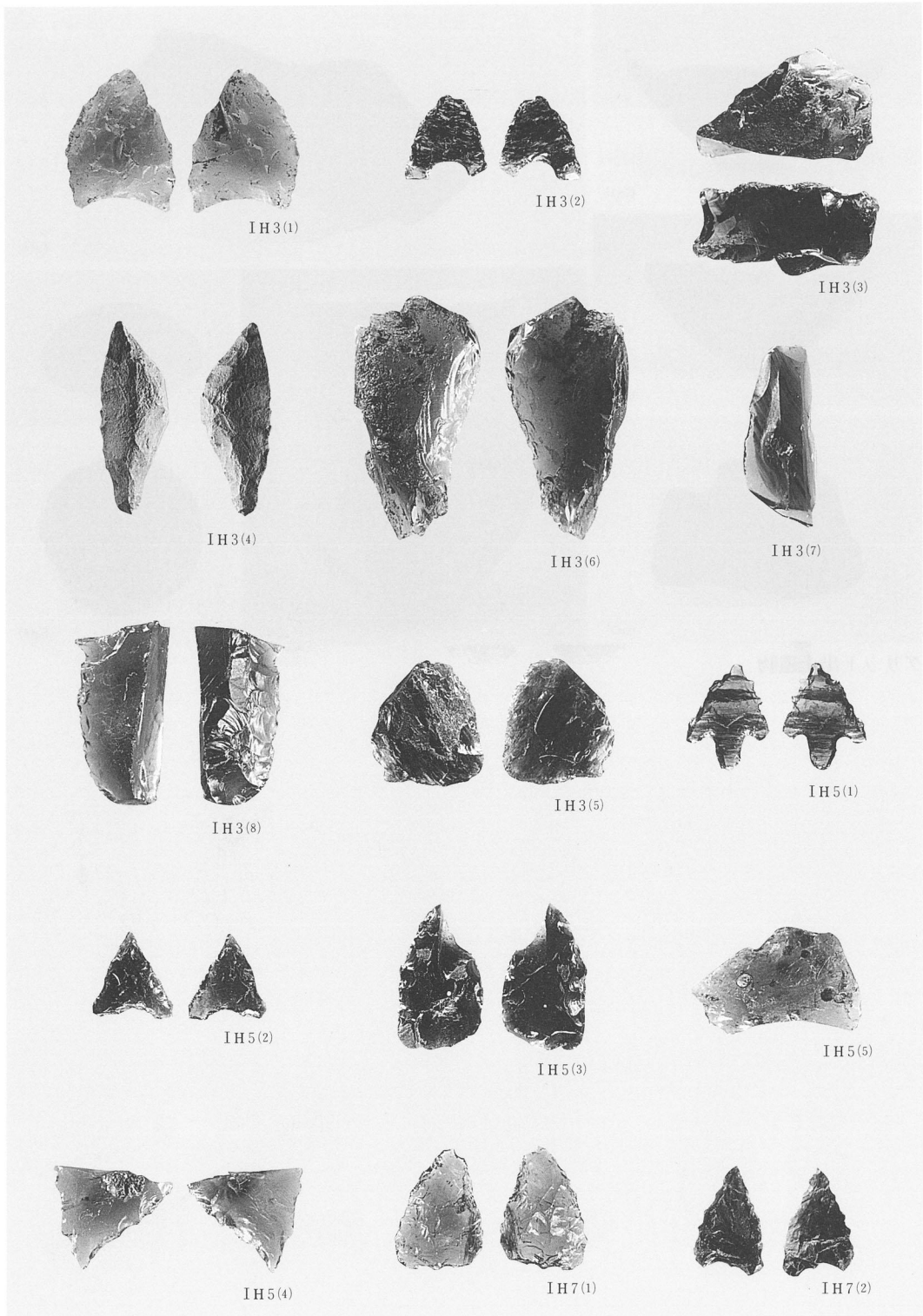
埋没谷出土遺物④



埋没谷出土遺物⑤

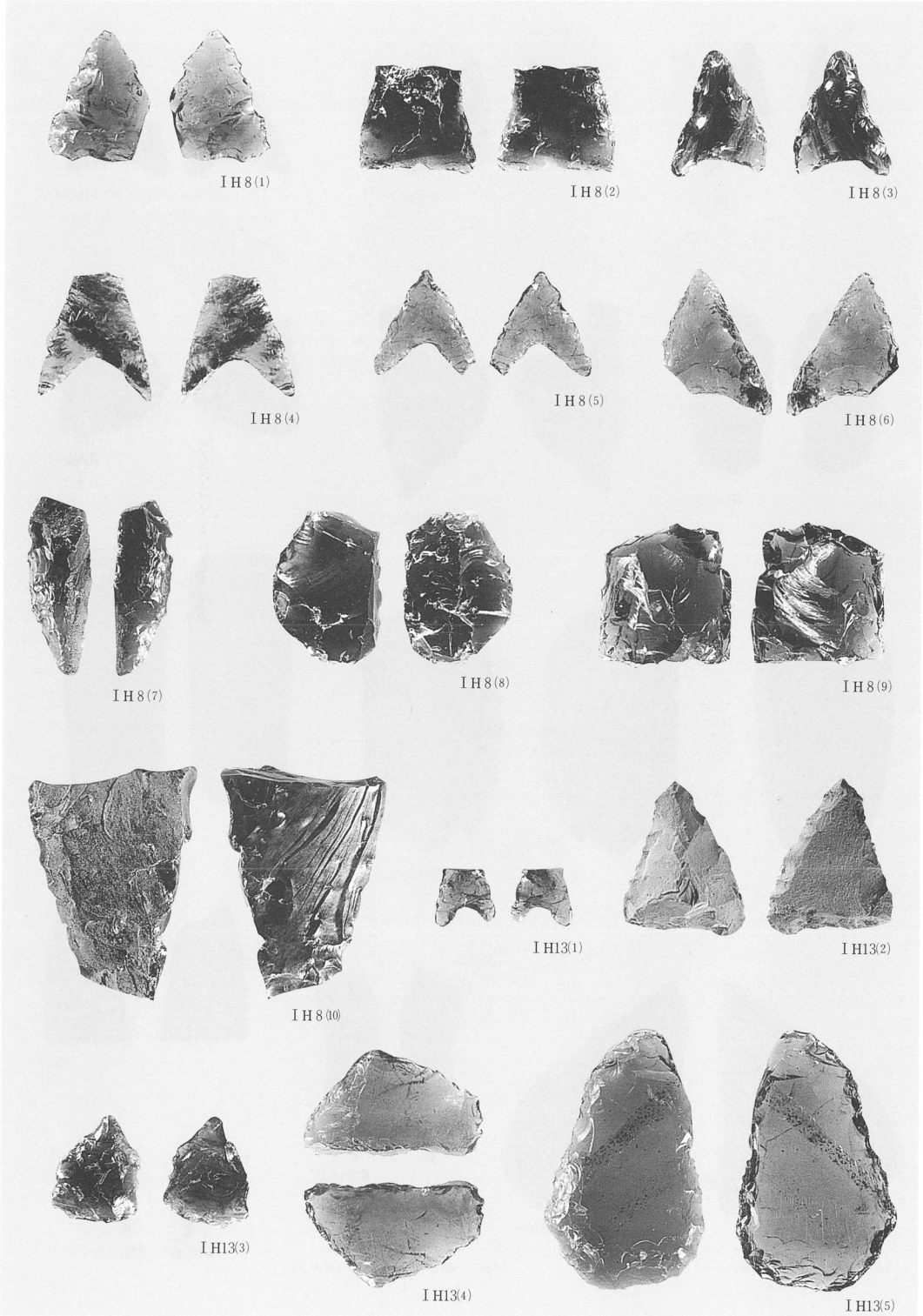


グリット出土遺物

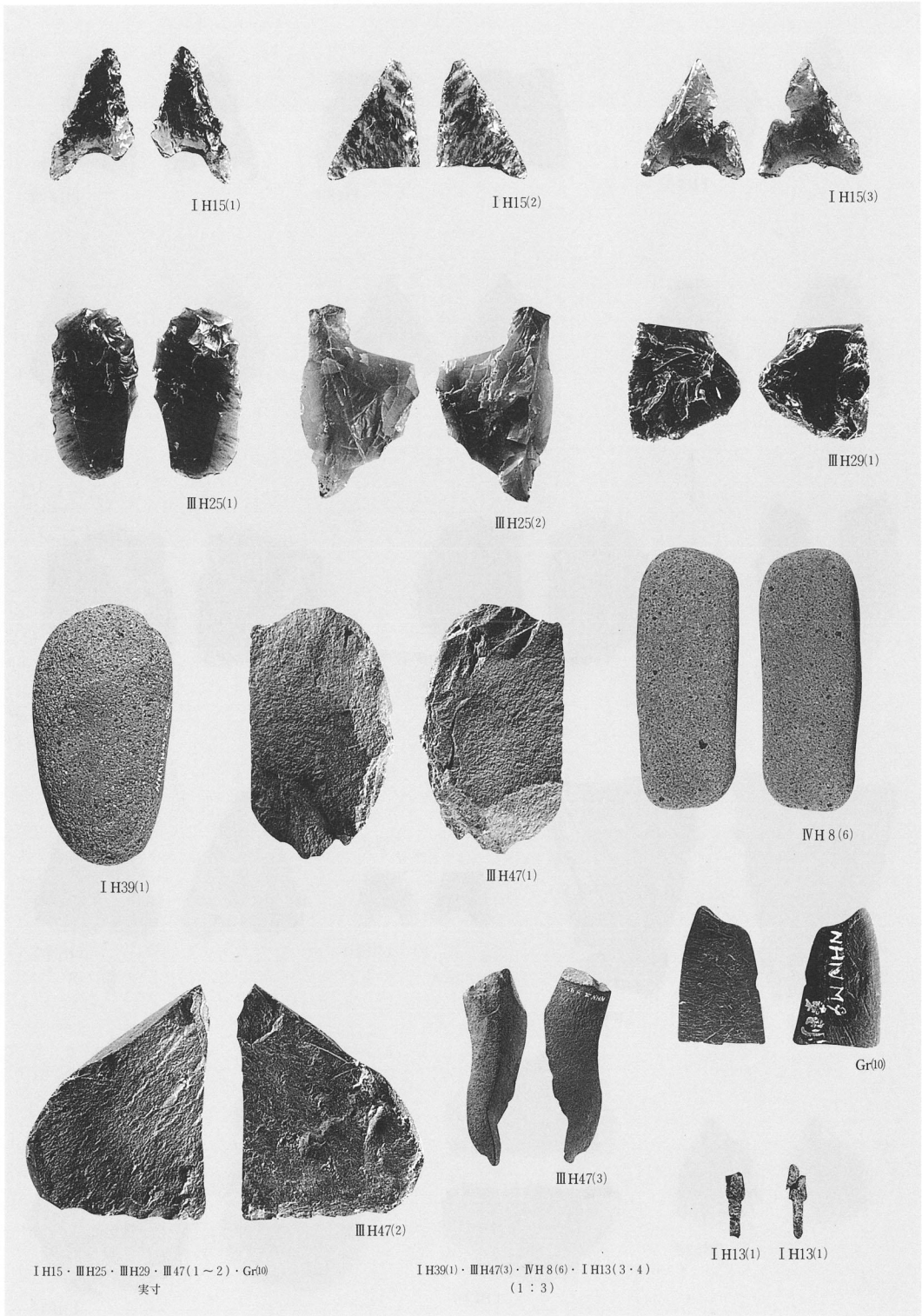


出土遺物(石製品)①

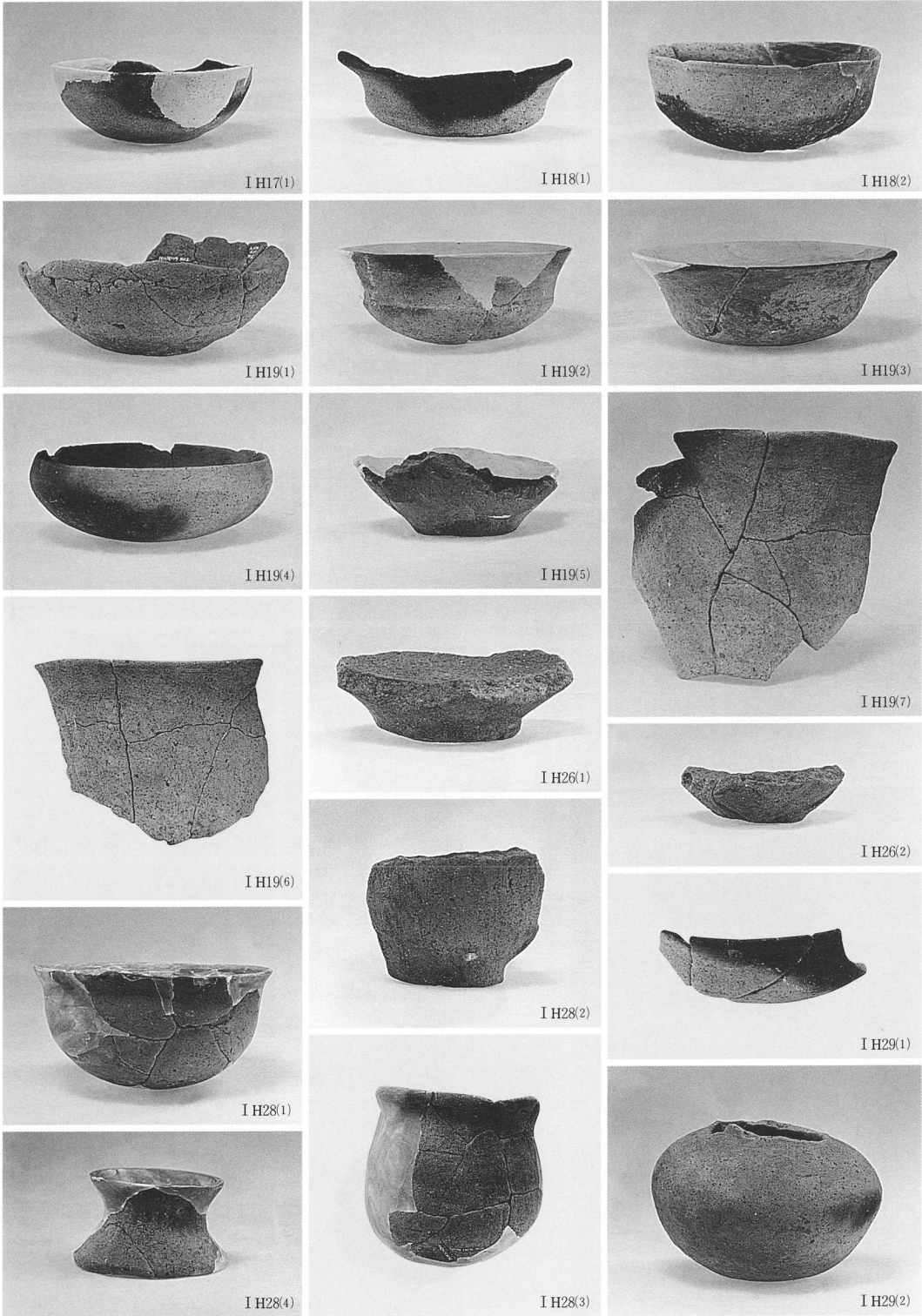




出土遺物(石製品)②



出土遺物(石製品)③



I H17·18·19·26·28·29号住居址出土遺物



I H35(1)



I H35(2)



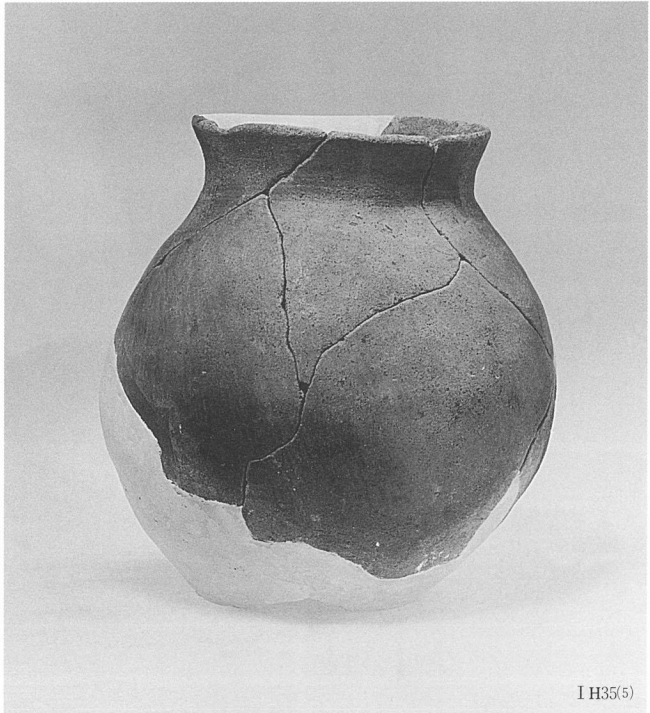
I H35(3)



I H35(4)



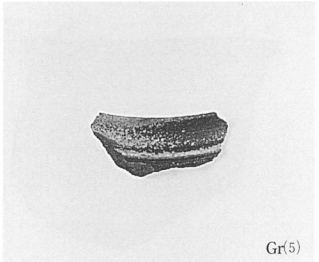
Gr(2)



I H35(5)



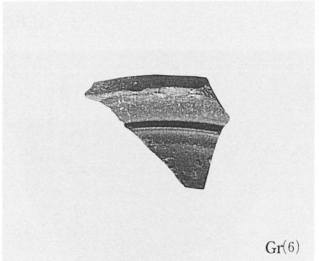
I H35(6)



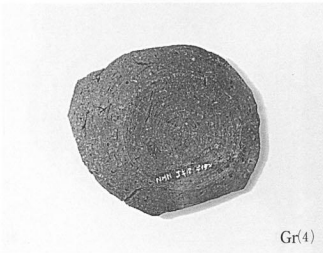
Gr(5)



Gr(1)



Gr(6)

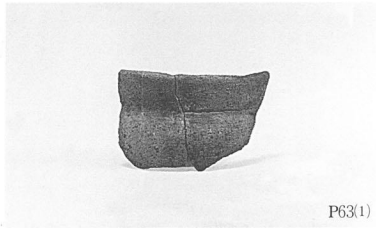
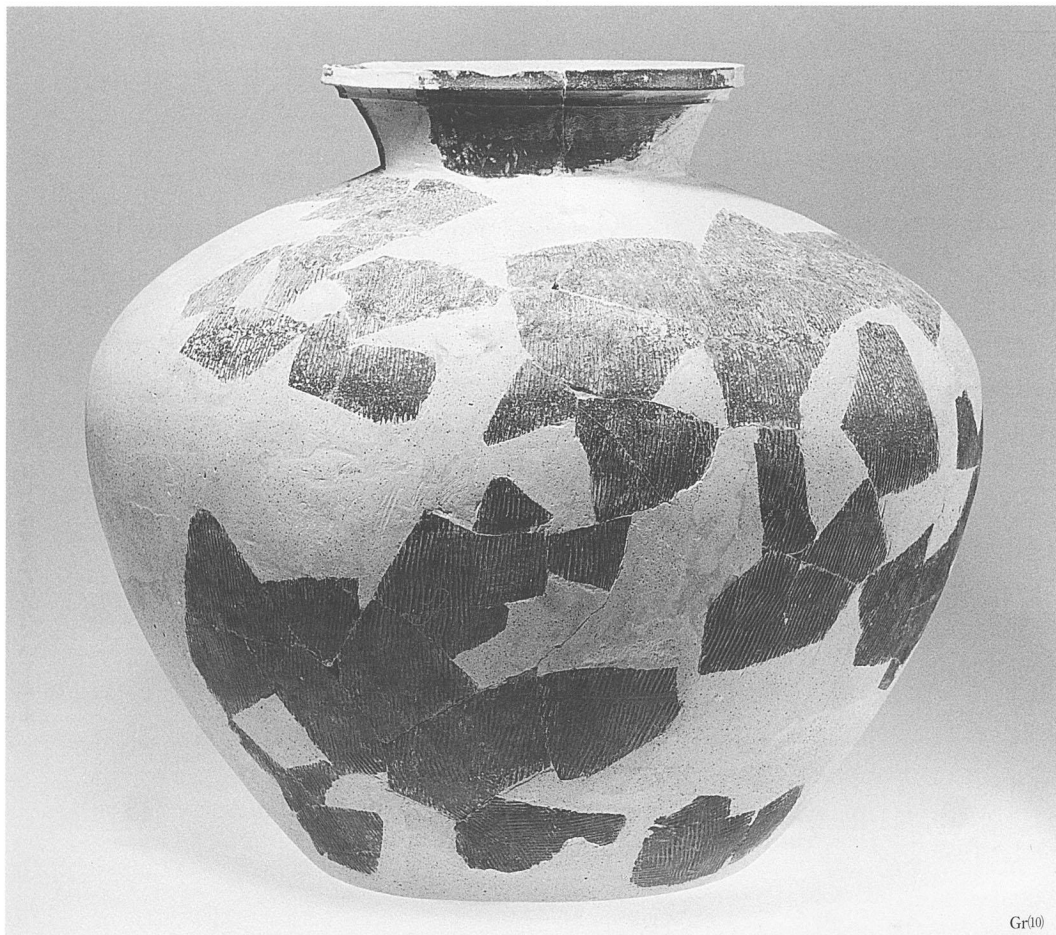


Gr(4)

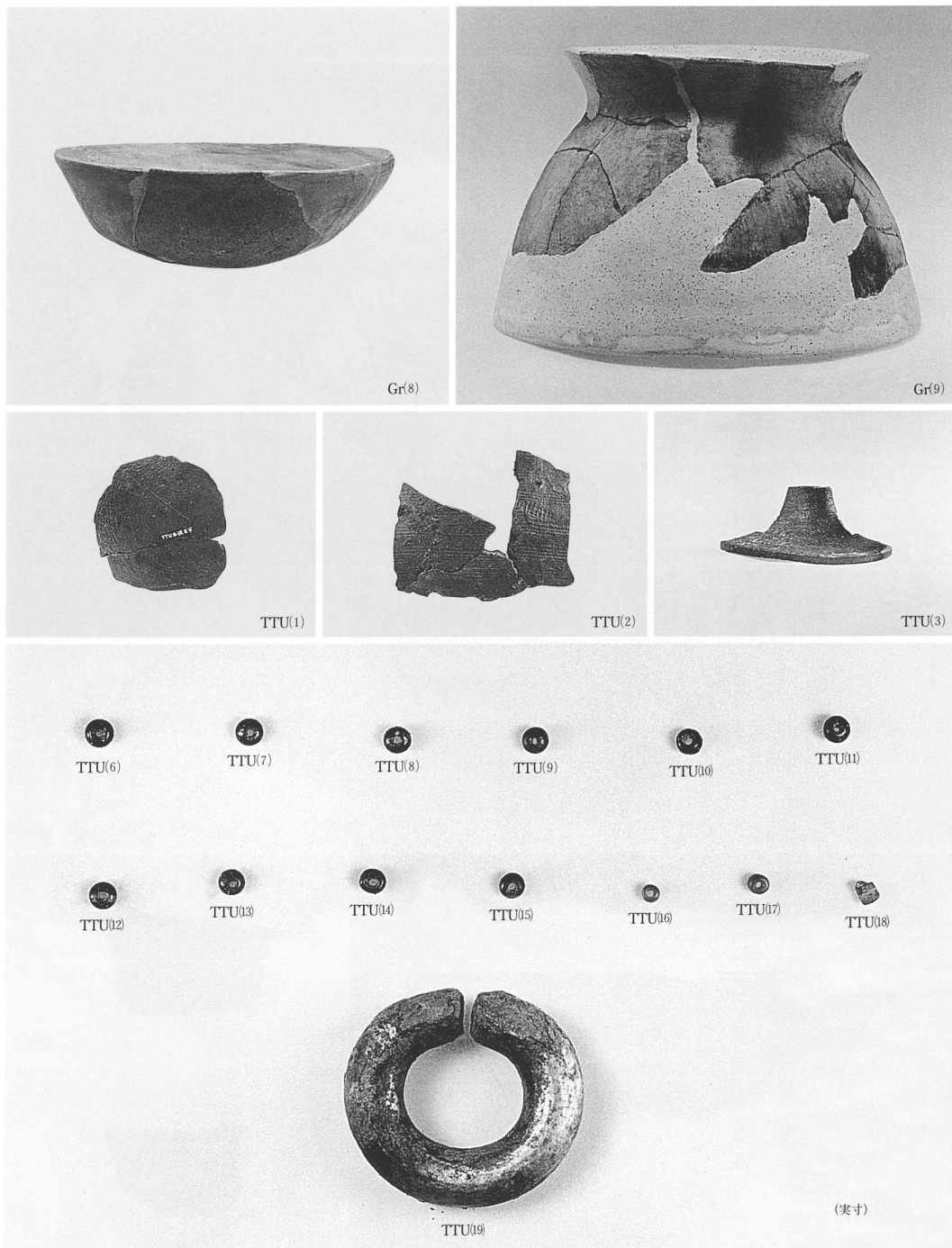


Gr(7)

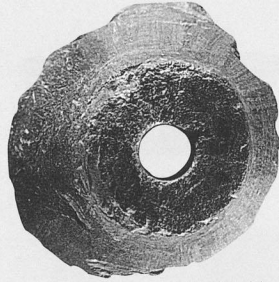
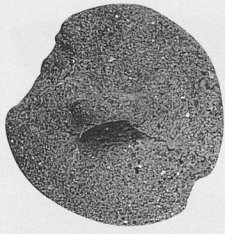
I H35・遺構外出土遺物



遺構外出土遺物②

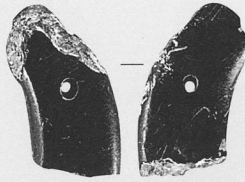
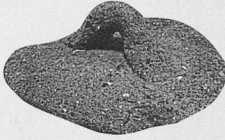


遺構外出土遺物・坪の内古墳出土遺物

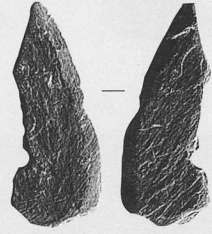


I H19(8)

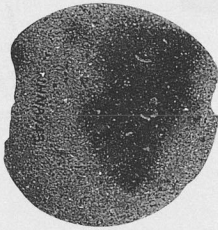
埋没100-(2)



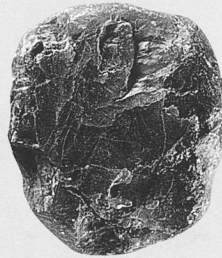
I F 2 100-(4)



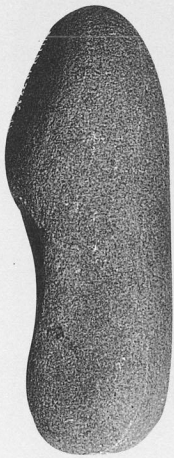
Gr 100-(6)



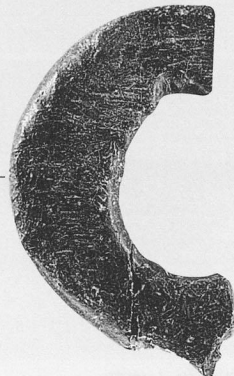
I P143 100-(1)



Gr 100-(3)



I H29(3)



Gr 100-(5)

100(2~6)実寸 100(1)(1:2) I H19(8)・I H29(3)(1:3)

出土遺物 (土製品・石製品)