

Chapter 2 Dismantling of the Lower Platform

Section 1 Dismantling of the Upper Tiers (N19- N22)

N19

N19 is an assembly of stone blocks immediately below N18, which constitutes the paving stones of the lower platform. As the upper stone blocks of the foundation, they correspond to edging stones, and display moldings that are an inversion of the moldings on N21, which correspond to base stones.

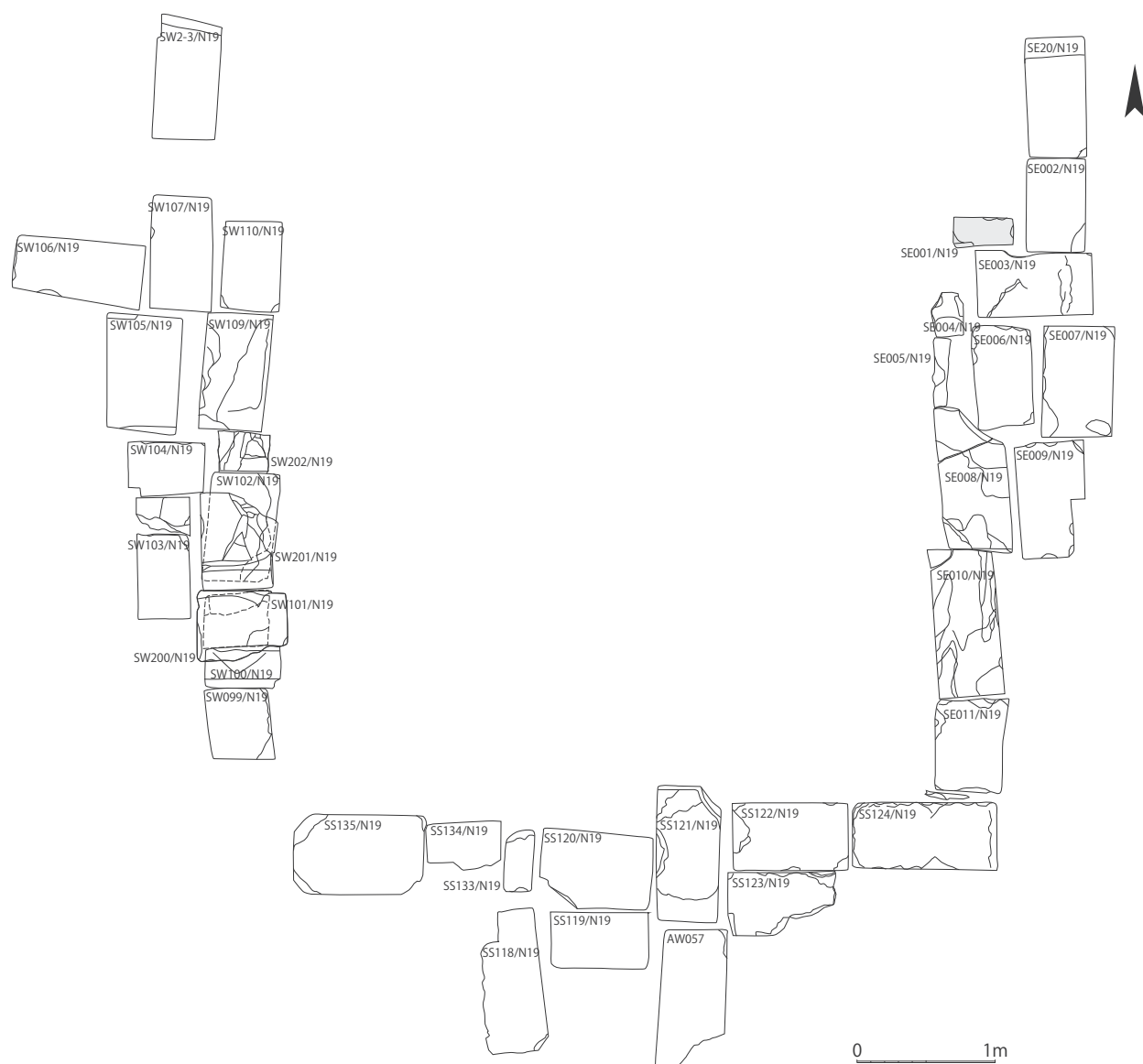


Fig. 5: N19 horizontal plan



Fig. 6: Photo of N19 (viewed from the south; taken on July 11, 2013)



Fig. 7: Northeast corner of the lower platform

N20

N20 corresponds to the stone panel for the upper blocks of the foundation. The single tier is therefore roughly twice the height of the other tiers, with two tiers of dry masonry in some areas on the inside. For this reason, the figure for N20 consists of two drawings, one of the upper dry masonry tier (Fig. 8 top) and one of the bottom dry masonry tier (Fig. 8 bottom). Many sandstone blocks that correspond to the outer side of the upper tiers of the base are missing particularly on the south and southeast sides, and are displayed as blank spaces in the figure.

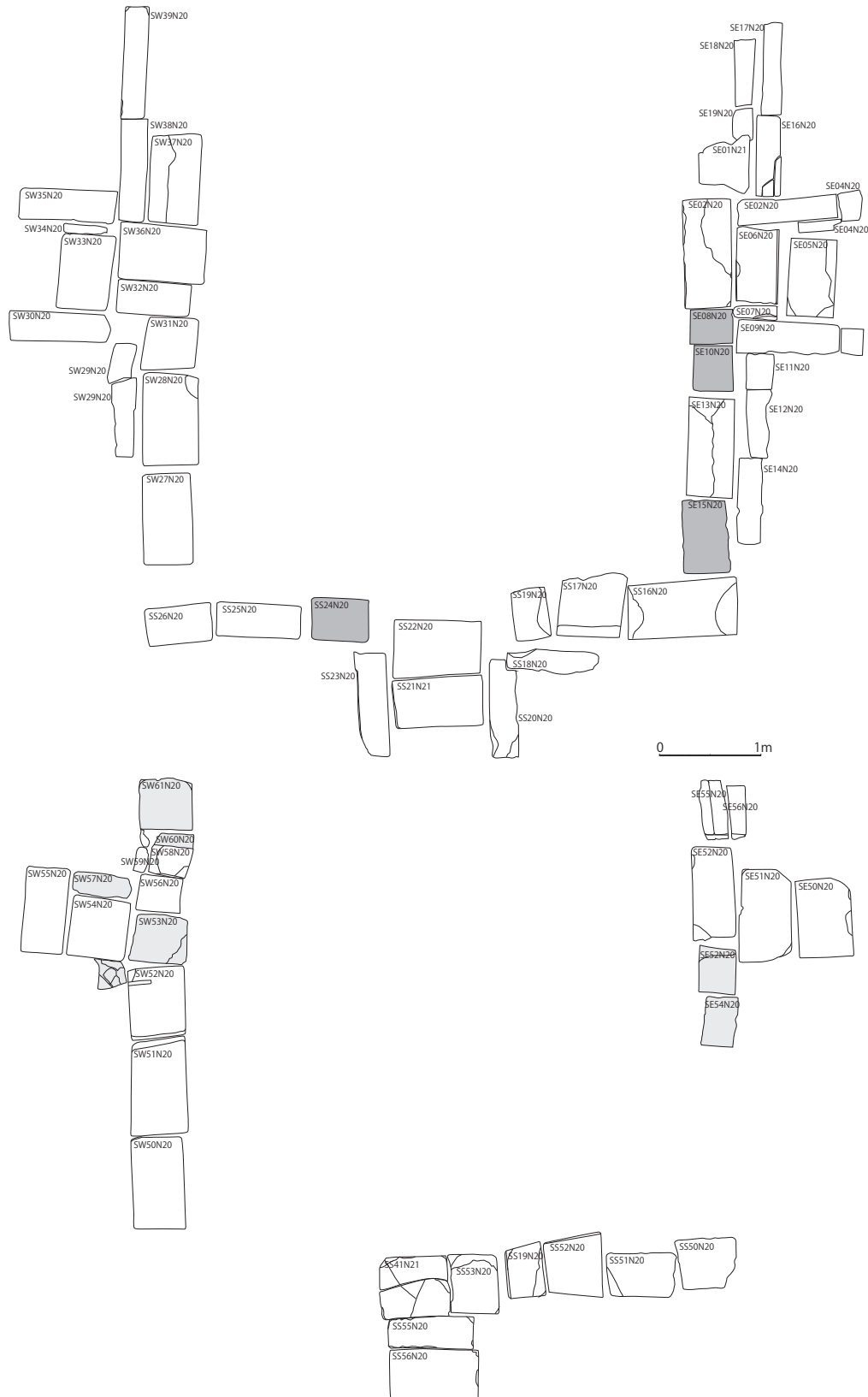


Fig. 8: N20 ground plan



Fig. 9: N20 overhead photo



Fig. 10: Connecting area with the Central Sanctuary
(view of west side)



Fig. 11: Connecting area with the Central Sanctuary
(view of east side)

N21

N21 are stone blocks that correspond to base stones of the upper block of the foundation. The bottom half displays moldings that project outward in an arc. As they serve as base stones, most are long and narrow blocks on the whole, and because they have moldings, they include few diverted stones. Blocks SW07 of the west stairways and SS05 of the south stairways, however, are clearly diverted blocks, as they have different moldings on the side that adjoins the inner face of the foundation. Block SS03 on the south side has scraping marks along the top surface of its width. In the current dismantling work, a sling for hoisting the block has been applied to coincide with the marks. The marks might perhaps have been made as a result of a similar application in ancient times.

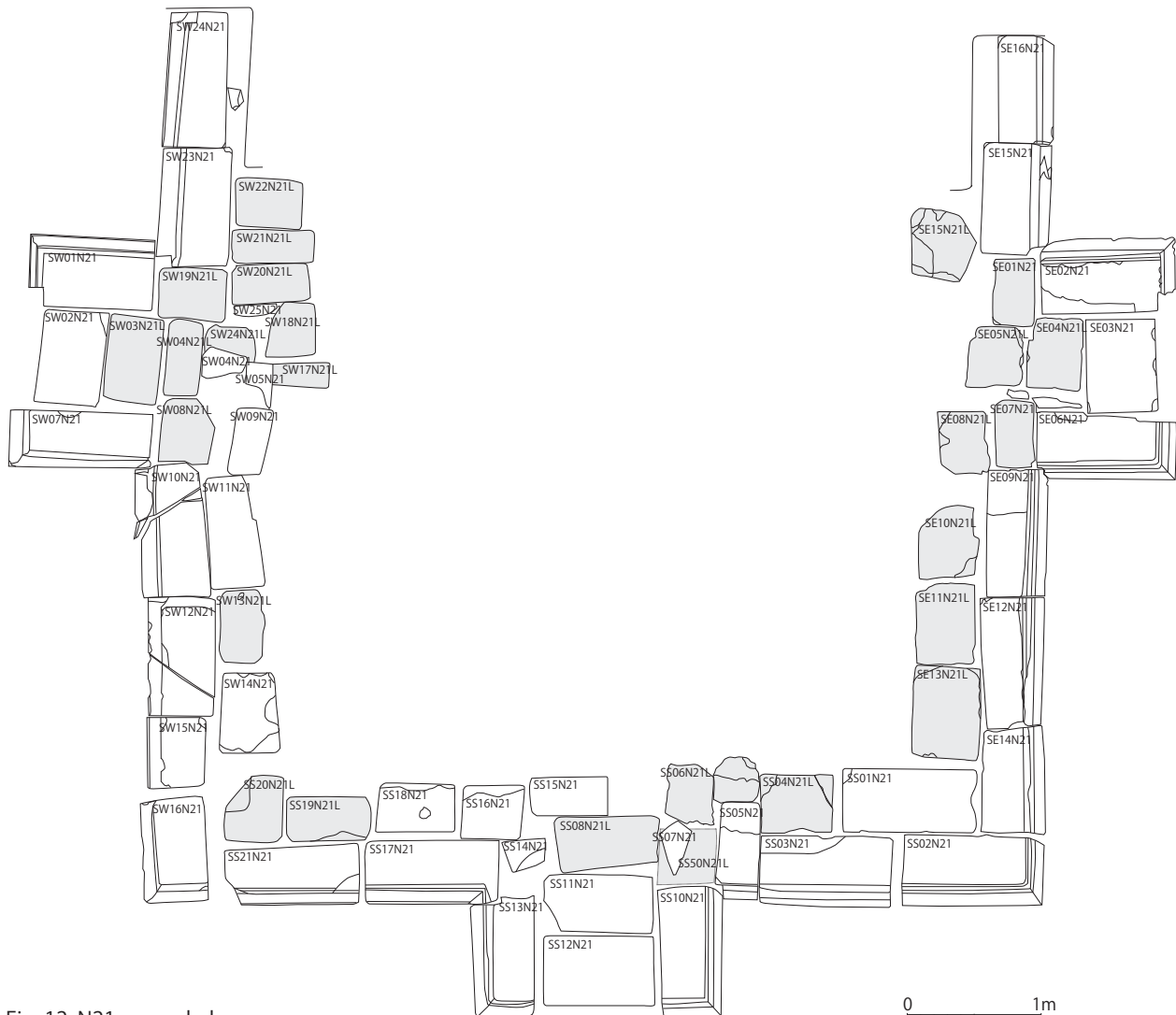


Fig. 12: N21 ground plan



Fig. 13: Moldings on the rear face of SW07N21



Fig. 14: Line engravings on SE03N21 and SE09N22



Fig. 15: N21 overhead photo



Fig. 16: Relationship between N21 and the southwest corner of the Central Sanctuary (viewed from the southwest)

N22

N22 corresponds to the first tier of paving stones below the base stones. As they are paving stones, they are cuboid block with no moldings. For this reason, the ratio of diverted blocks is high compared to N21. Three blocks were found with hoisting holes, which are hardly seen in other stone blocks at Western Prasat Top, and many other blocks of N22 are characterized by line engravings that might have been markings made when diverting the blocks.

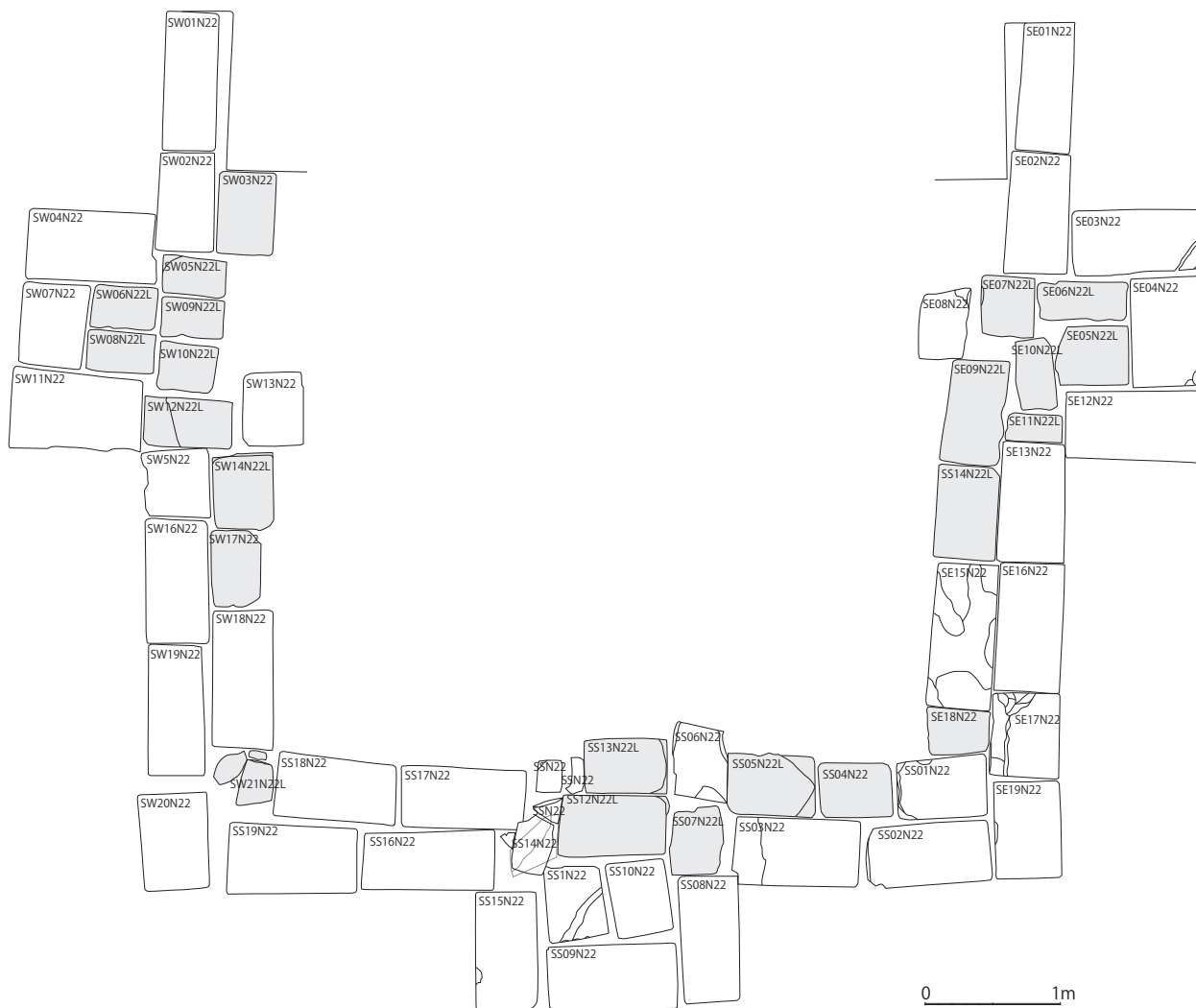


Fig. 17: N22 ground plan



Fig. 18: Line engravings on SE03N22

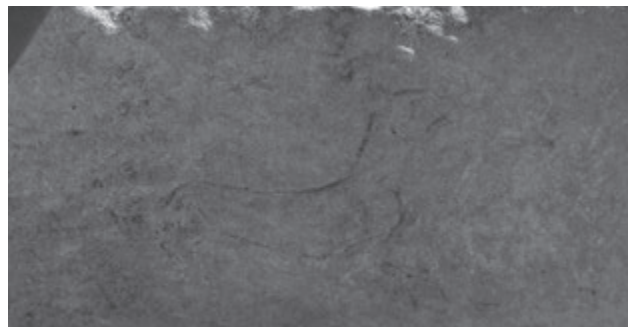


Fig. 19: Line engravings on SS09N22

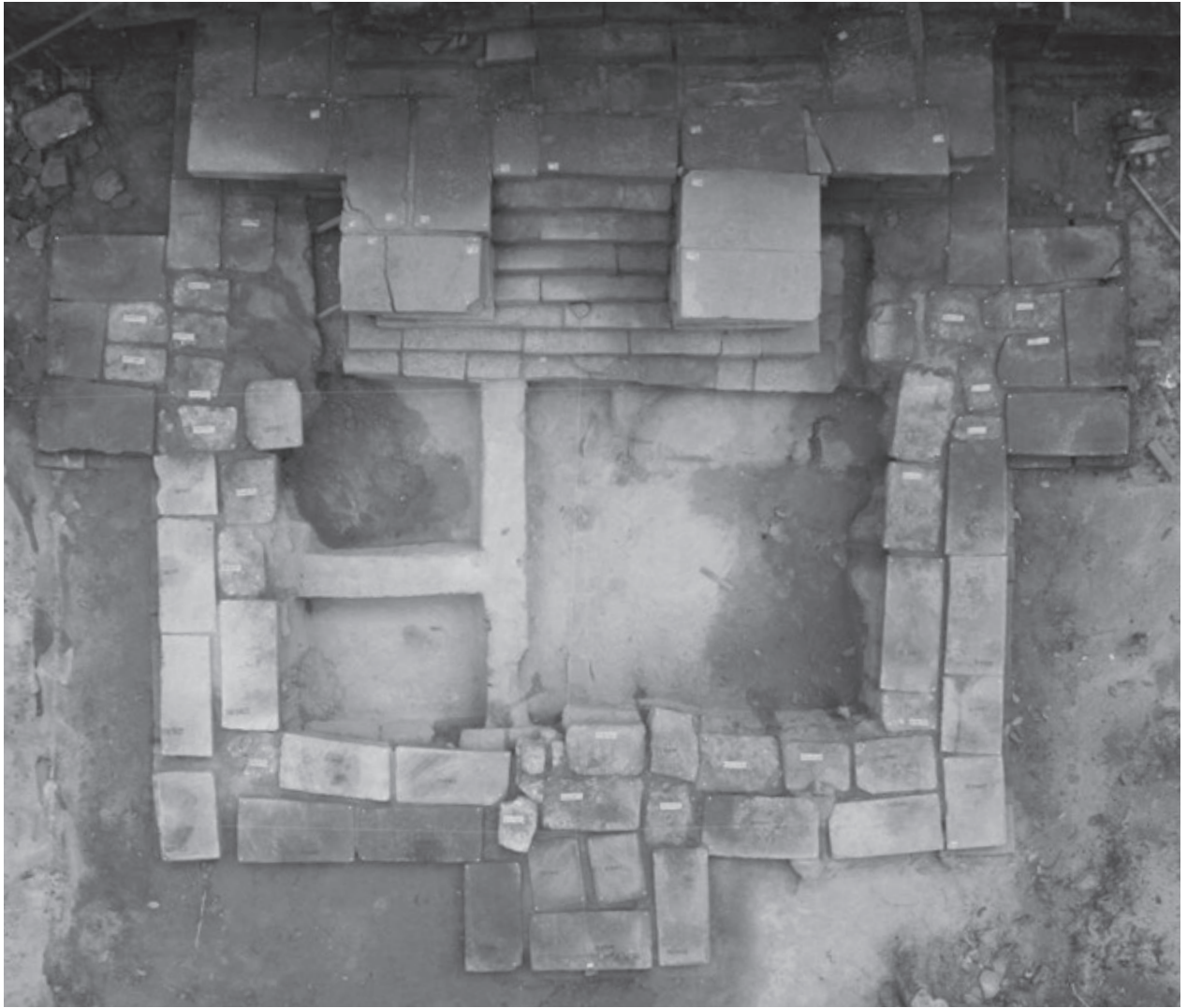


Fig. 20: N22 overhead photo



Fig. 21: Relationship between the stone blocks on the south side of N22, stone blocks of N23-N25 and the east-west stone line in the foundation

Section 2 Dismantling of the Basement of the Lower Platform (N23- N25)

N23

Tiers N23 to N25 constitute the lower part and basement of the lower platform, and are part of the base that lies buried in soil at present. Many diverted blocks are included, and blocks with crude surface processing were found, as shown in Fig.25. SW12 has moldings on its rear face, as well as holes for hoisting, and is thus clearly a diverted block (Fig. 22). Furthermore, as shown in Fig. 23, some other blocks mainly around the stairways display line engravings that mark the position of N22 blocks that come on top.

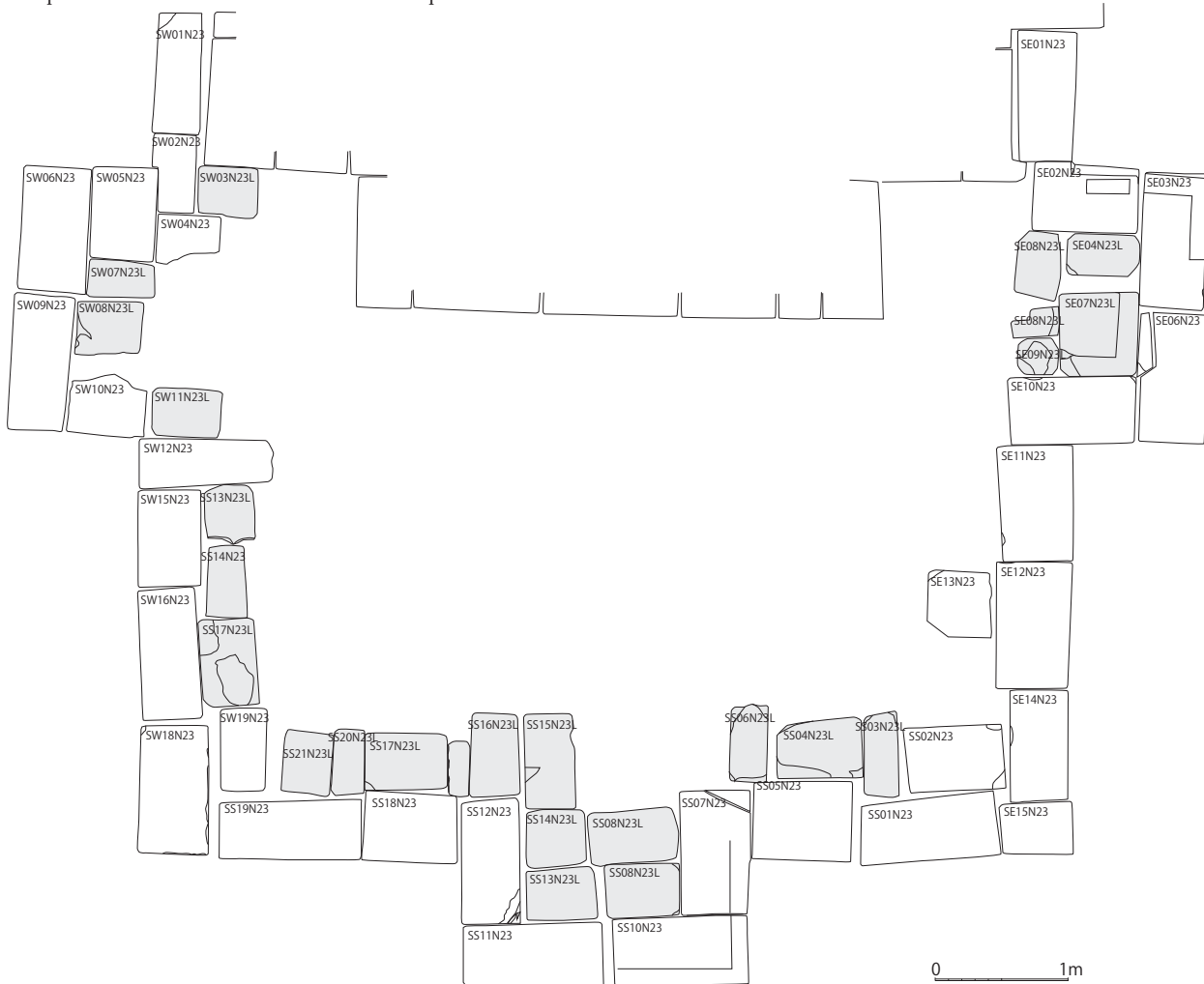


Fig. 22: N23 ground plan



Fig. 23: Moldings on the rear face of SW12N23

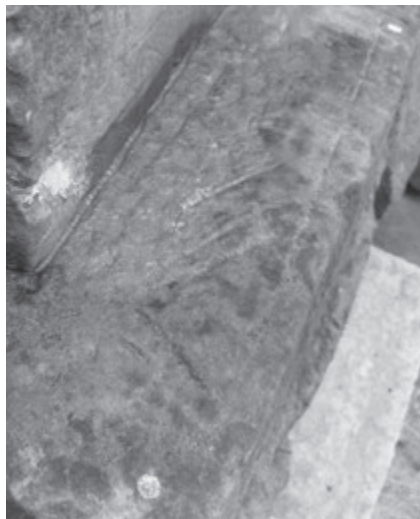


Fig. 24: Line engravings on SE03N23



Fig. 25: SE02,03N23



Fig. 26: N23 overhead photo



Fig. 27: N23 and the south stairways of the Central Sanctuary

N24

Practically all blocks of N24 are made of laterite. Tiers above N24, down to N23, comprise the upper blocks of the foundation, so N24 and N25 are assumed to be laterite blocks that were installed as the base of the above sandstone blocks. The paving is rather disorderly, with the blocks of the east stairways paved most carefully and blocks of part of the west stairways missing altogether. The laterite blocks of the south stairways are also disorderly, but SS17 and SS19 on the inside are sandstone Sema stones. Heretofore, 12 Sema have been discovered from the upper foundation, as reported in the previously-published restoration report. The two recently-discovered Sema were also installed in the stairways, with their head in the direction of the foundation. Since they seem to have been arranged in this way with conscious awareness of their function as a Sema, it can be assumed that they had some ritualistic meaning (see Articles Chapter 3 p.56-64).

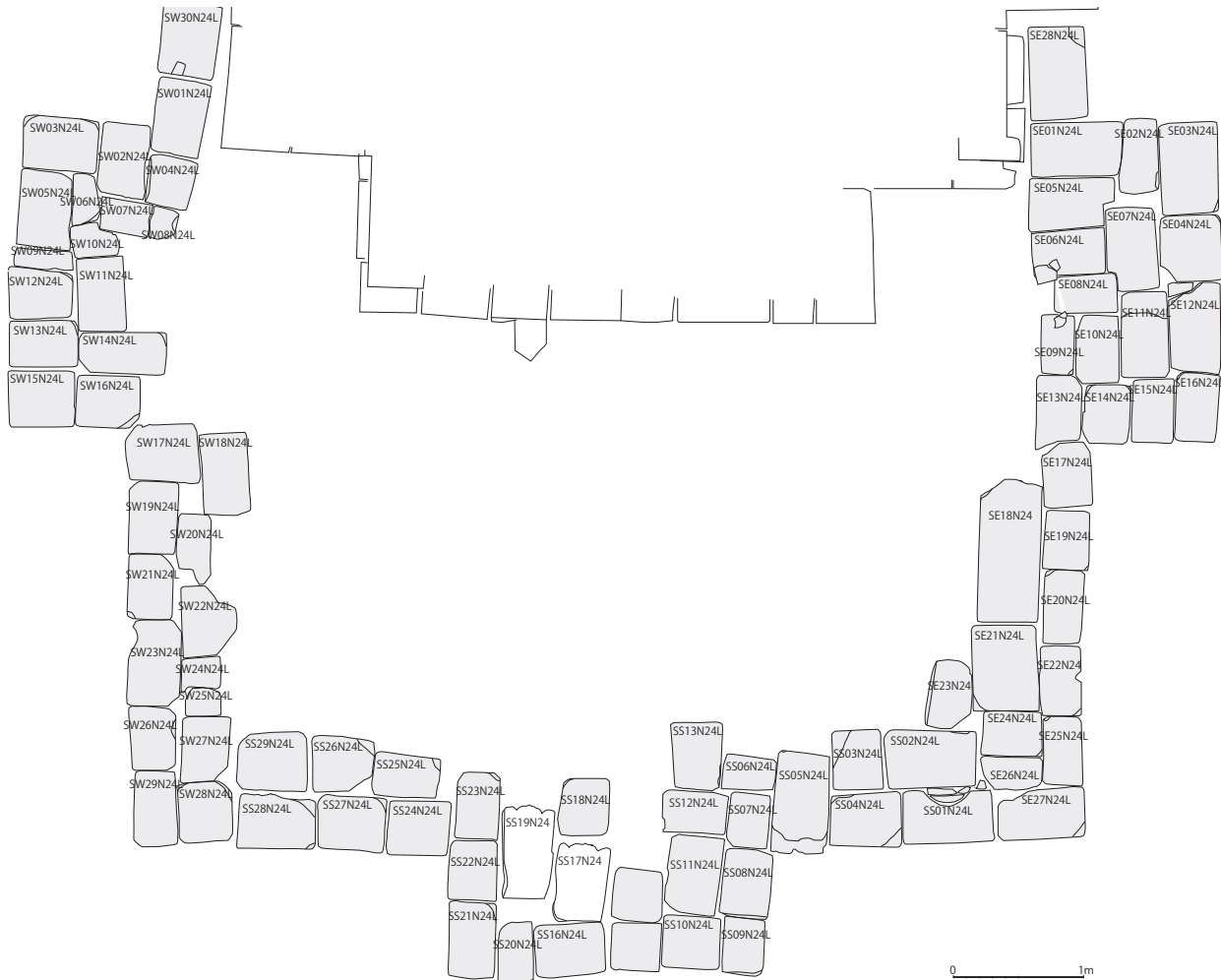


Fig. 28: N24 ground plan

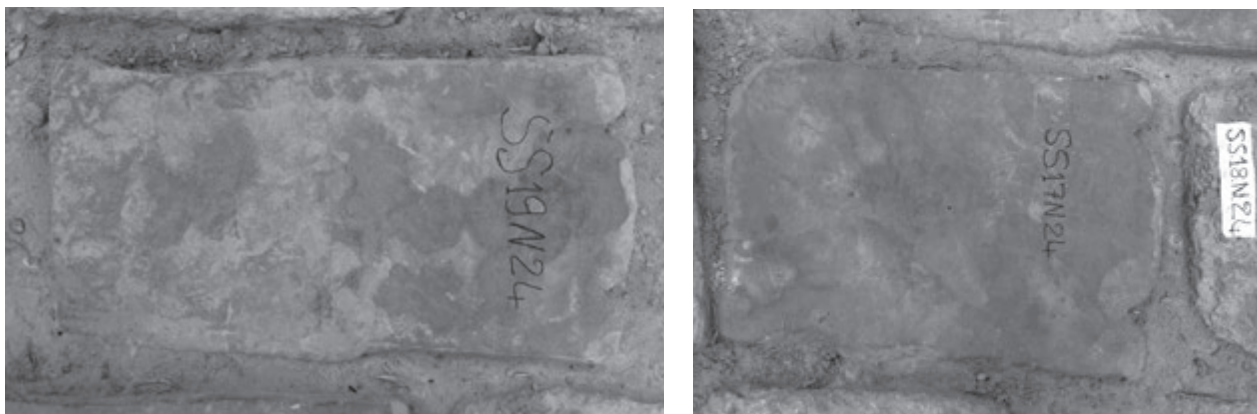


Fig. 29: N24 Sema stones; left: SS19, right: SS17



Fig. 30: N24 viewed from the north



Fig. 31: Sema stones diverted for use in N24 (viewed from the east)

N25

N25 is a stone line in the bottommost tier of the lower platform. It is comprised entirely of laterite, although some parts in the northwest and southwest areas are empty. As it is an intermittent line of stones, it is regarded as part of the base work along with N24, rather than foundation stones. In this sense, as shown in Fig. 21, the top surface of the stone lines in the foundation is practically aligned with N25, and could also be regarded as part of the foundation work accompanying the installation of N25.

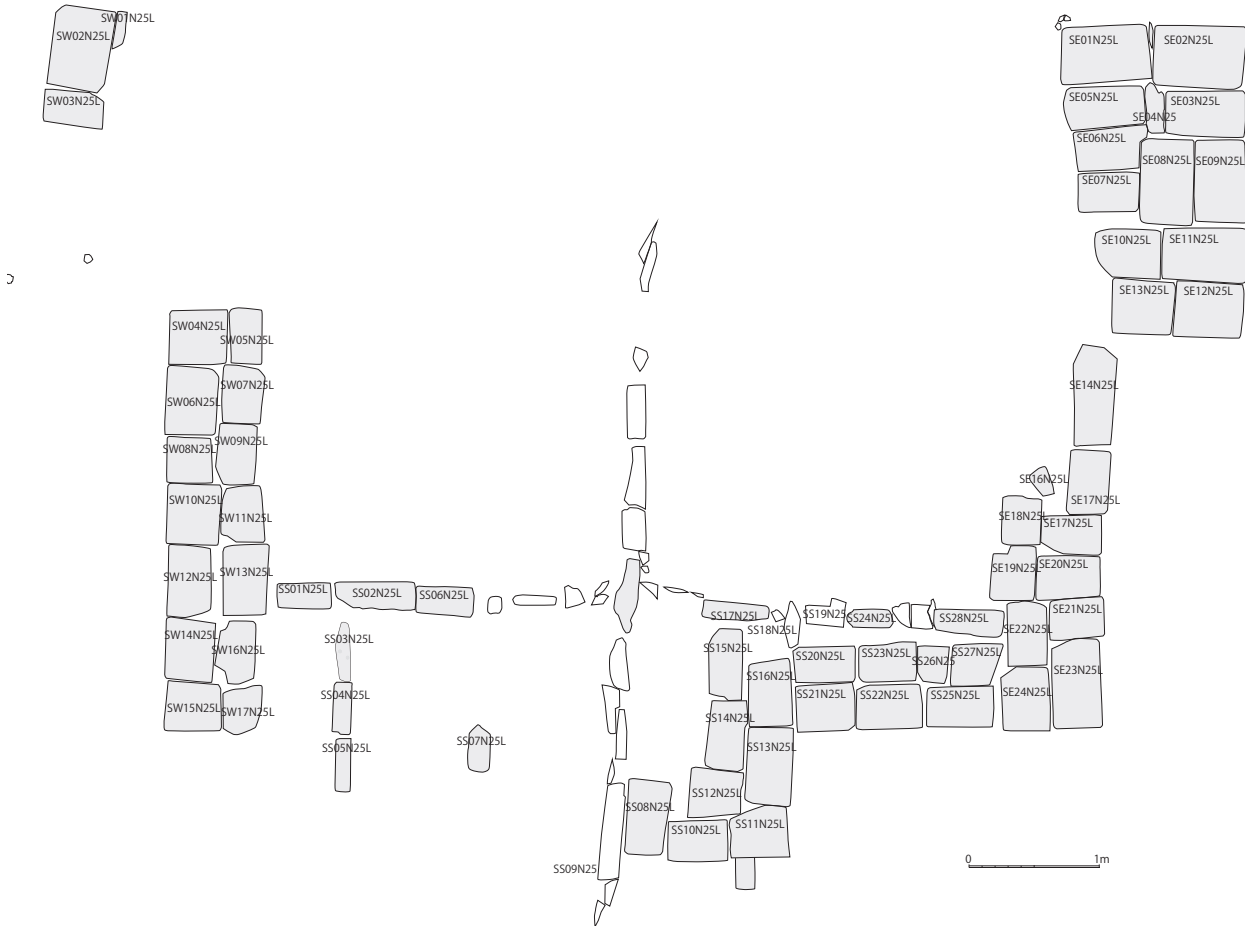


Fig. 32: N25 ground plan



Fig. 33: Sculpture diverted for use in the stone line in the foundation



Fig. 34: Relationship between N25 and the stone lines in the foundation



Fig. 35: N25 overhead photo (taken on Jan. 24, 2014)



Fig. 36: Stone line on the west side of N25 and the stone line in the foundation