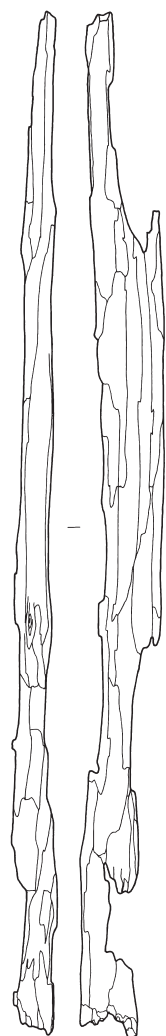




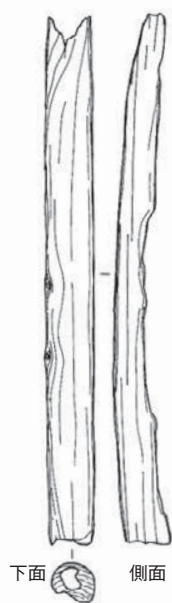
下面 北面 上面  
虹梁01



上面 東面 下面 西面  
桁03



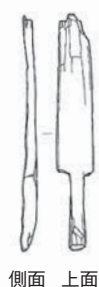
上面 側面  
虹梁02



垂木38



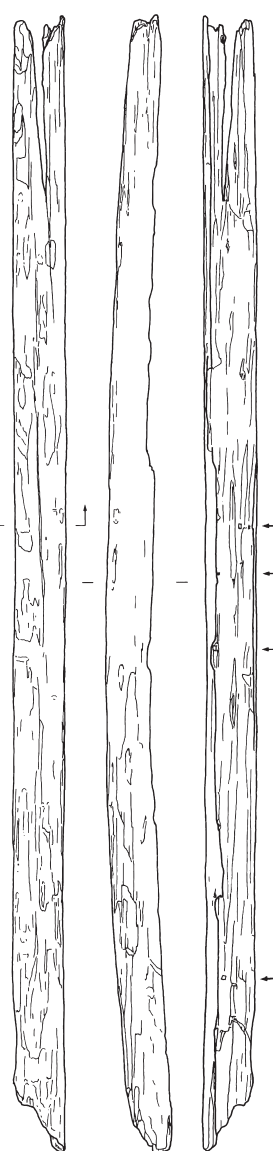
垂木27



垂木37



垂木03



下面 側面 上面  
垂木41



垂木栓01



垂木栓06



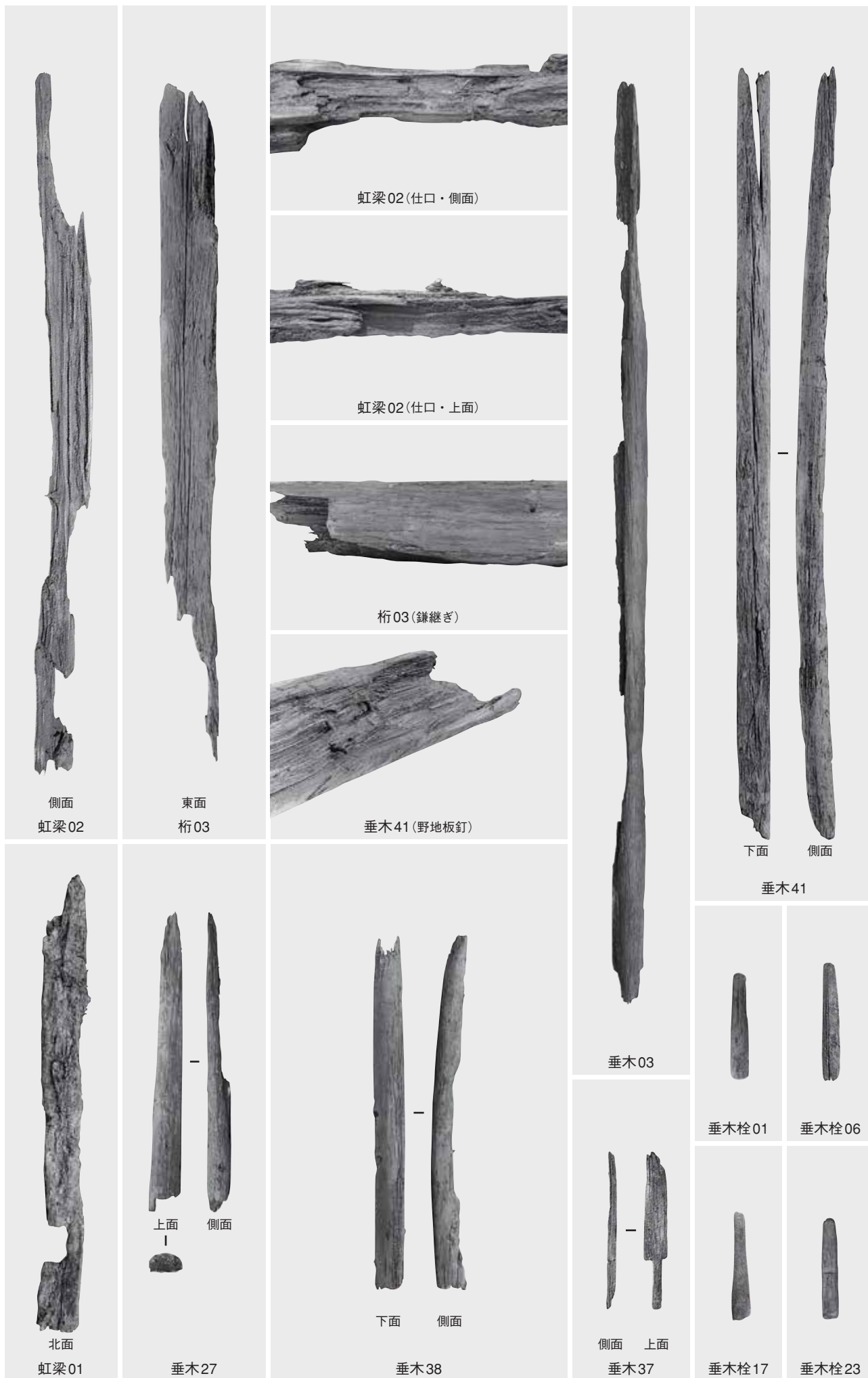
垂木栓23

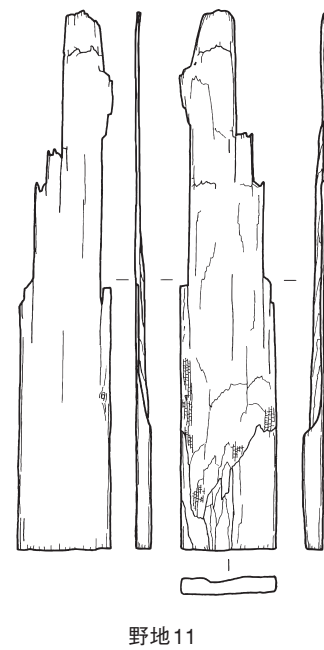
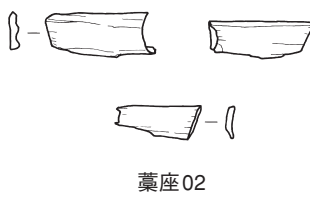
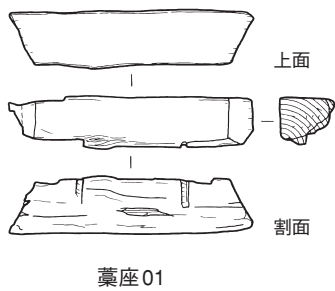
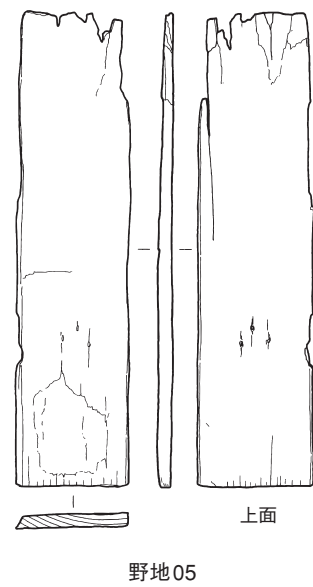
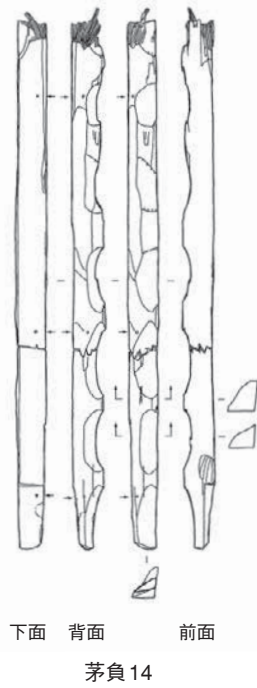
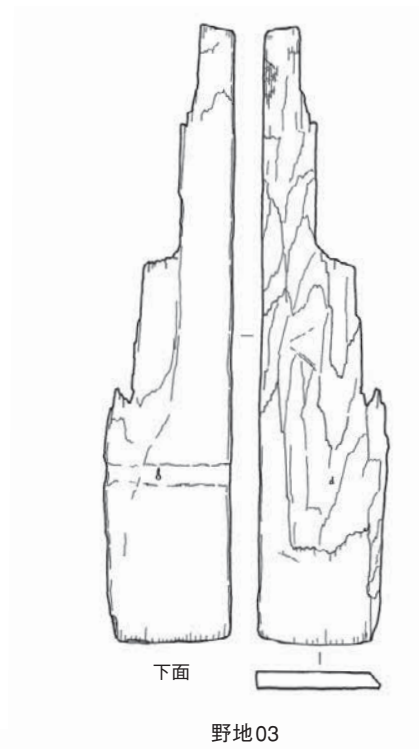
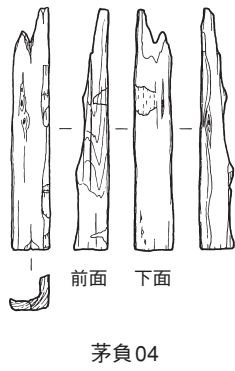
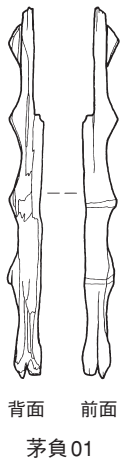


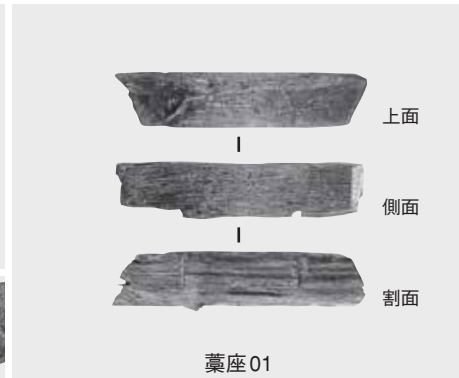
垂木栓24

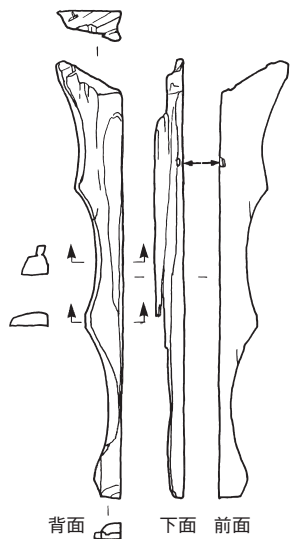


垂木栓17

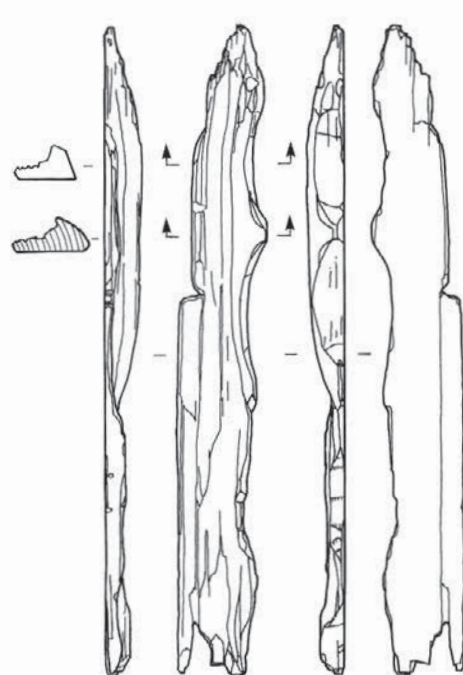




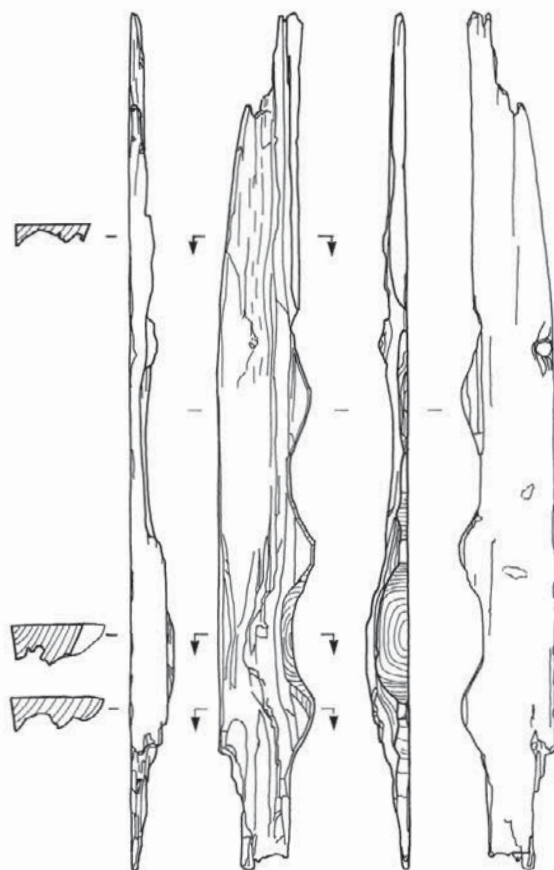




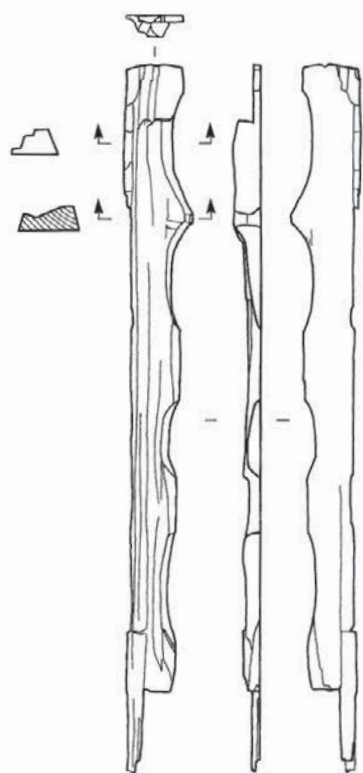
茅負07



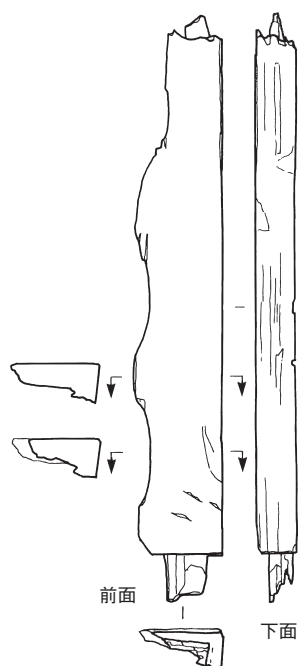
茅負10



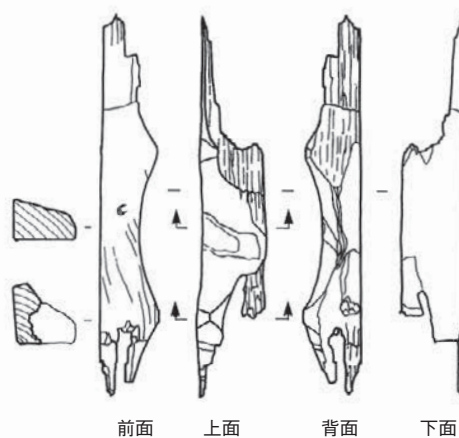
茅負08



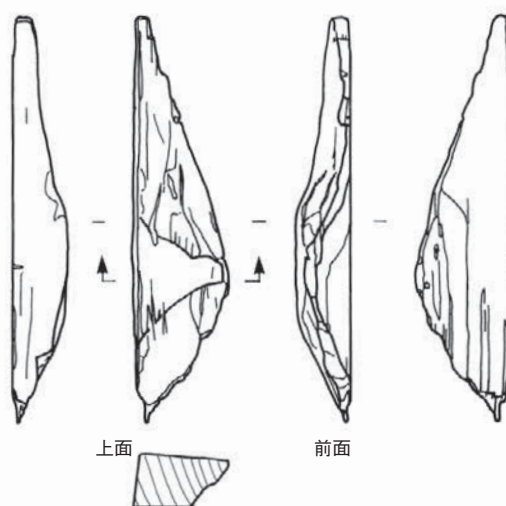
茅負12



茅負11

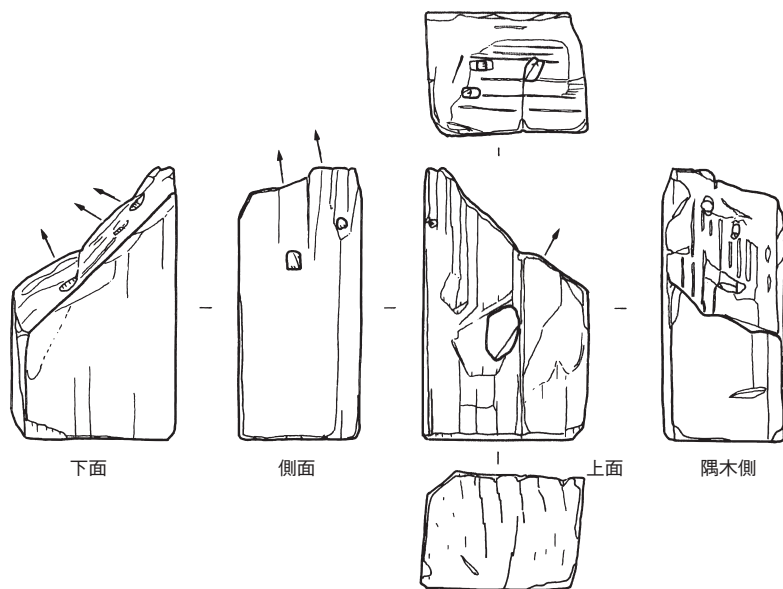


茅負13

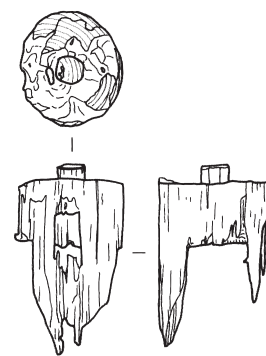


茅負09

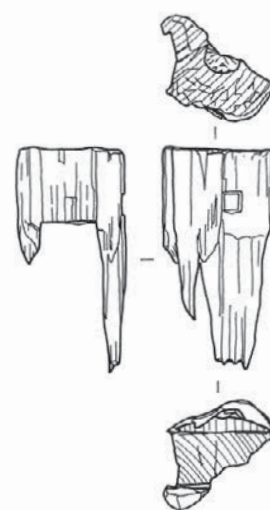




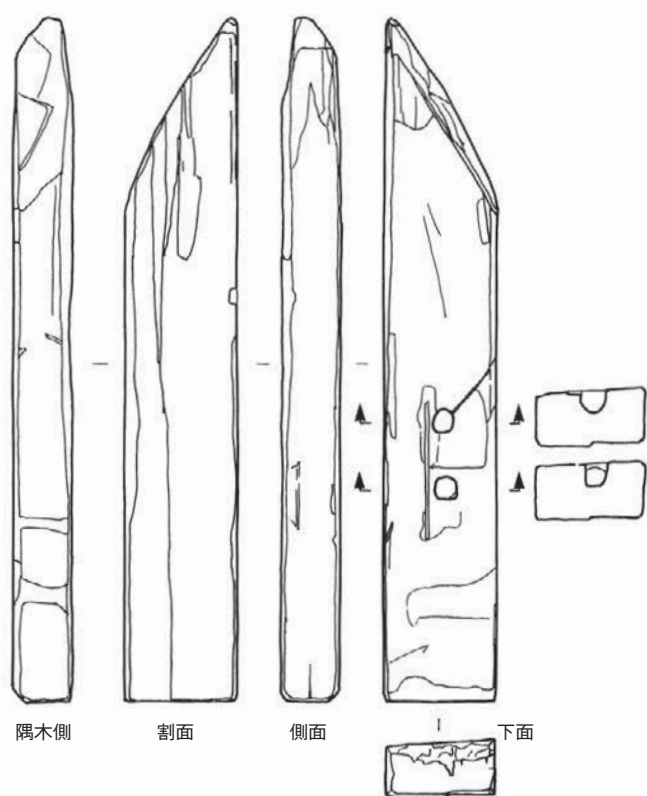
垂木39



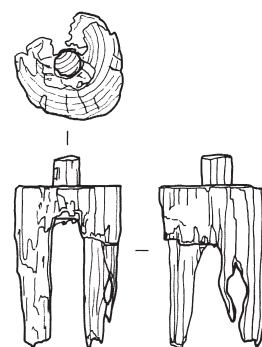
柱23



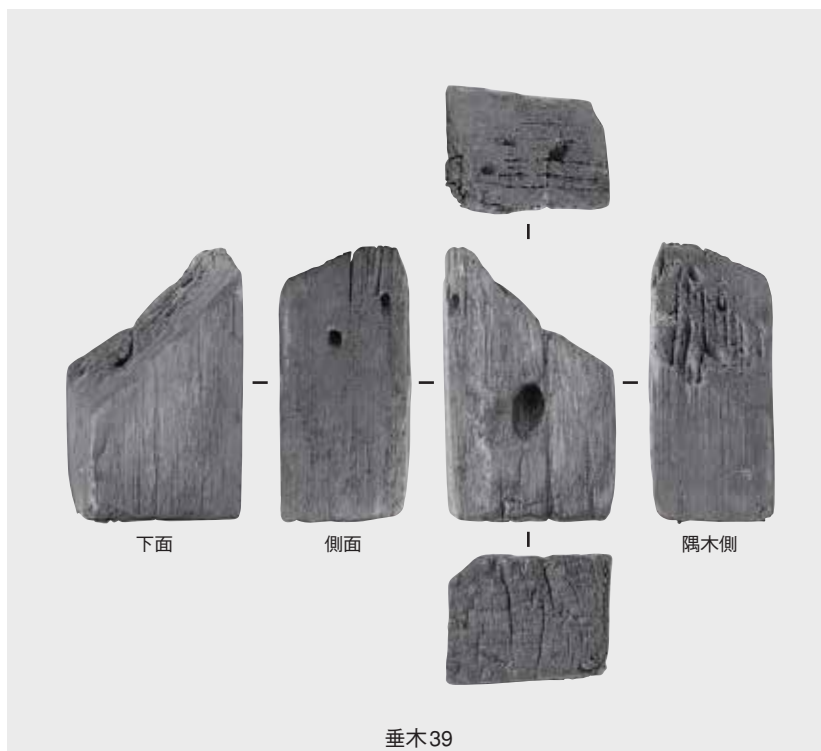
柱24

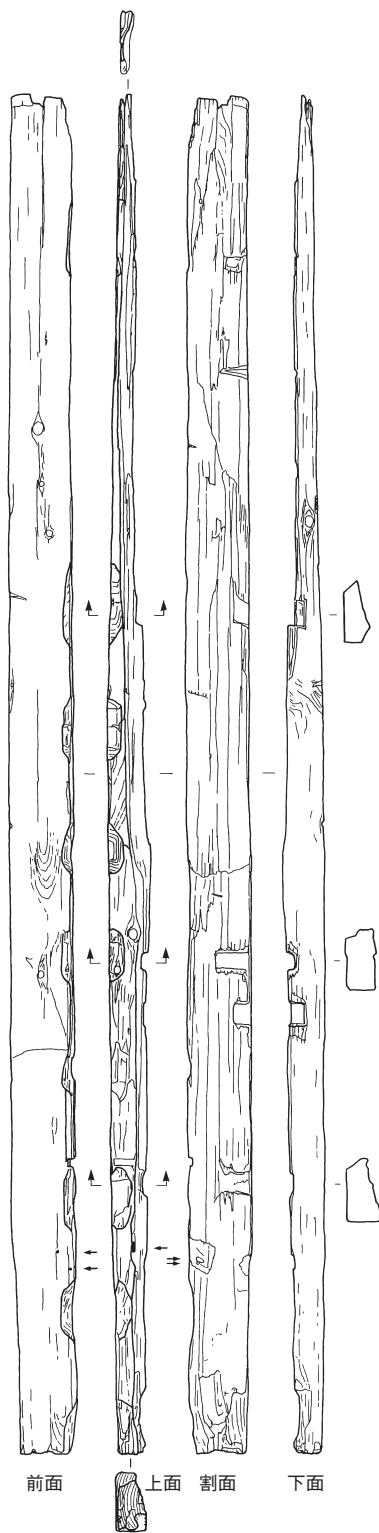


垂木40



柱25



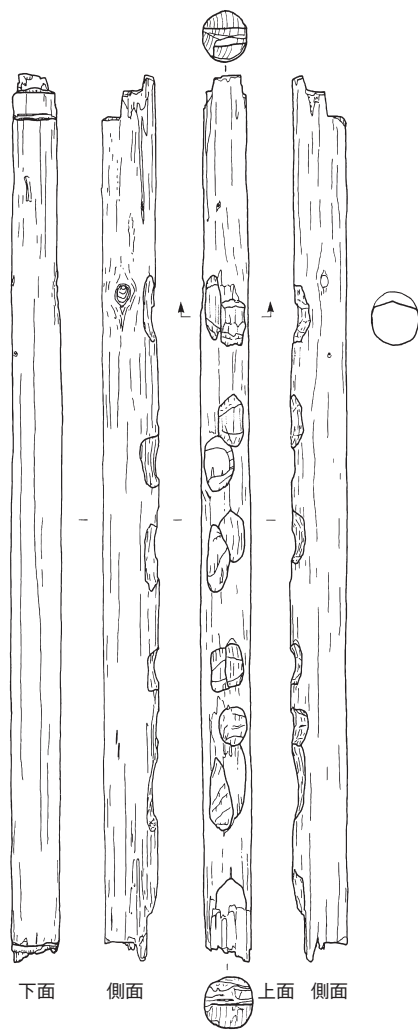


前面 上面 割面 下面

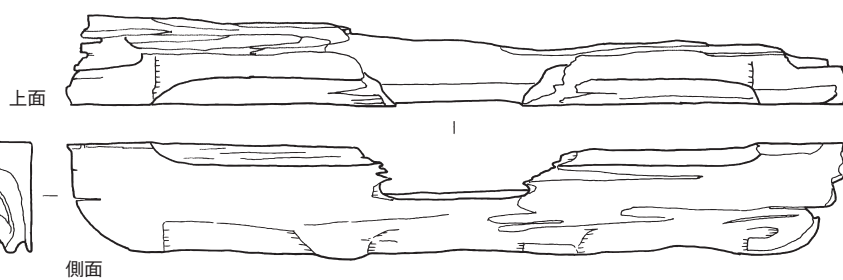
桁05



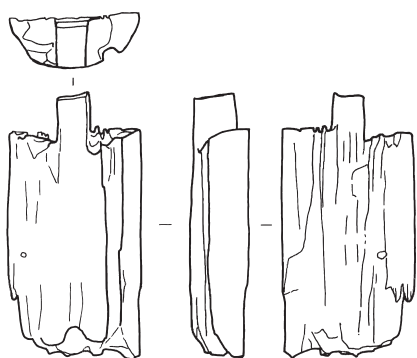
割面 下面 背面  
桁06



棟木01

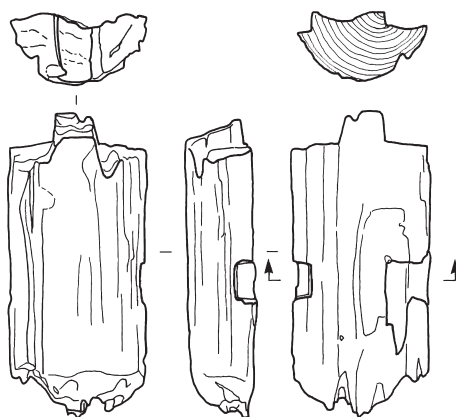


肘木07



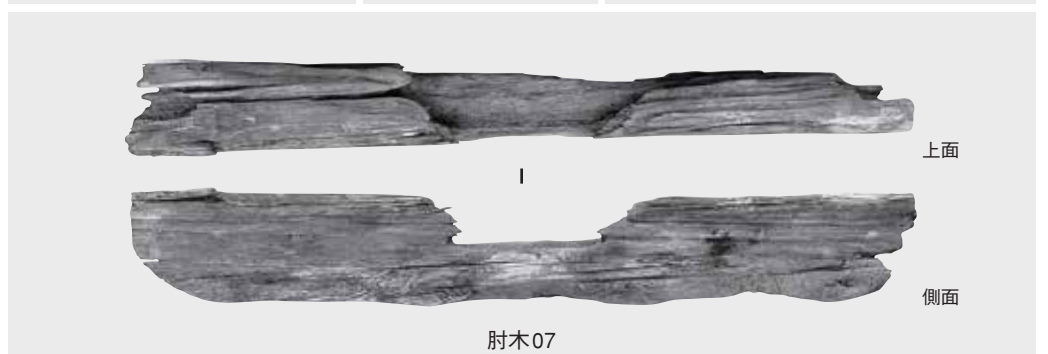
表面 側面 割面

柱26



表面 側面 割面

柱27





1・2 羽目石 3～5 敷石 6 階段踏石 7～9 仏龕内壁材 被熱赤変  
 10・11 仏龕敷石 12 講堂地覆石 13～15 金堂敷石



1



2



6



3



4



5



7



8



9



10



11



12



13(上面)

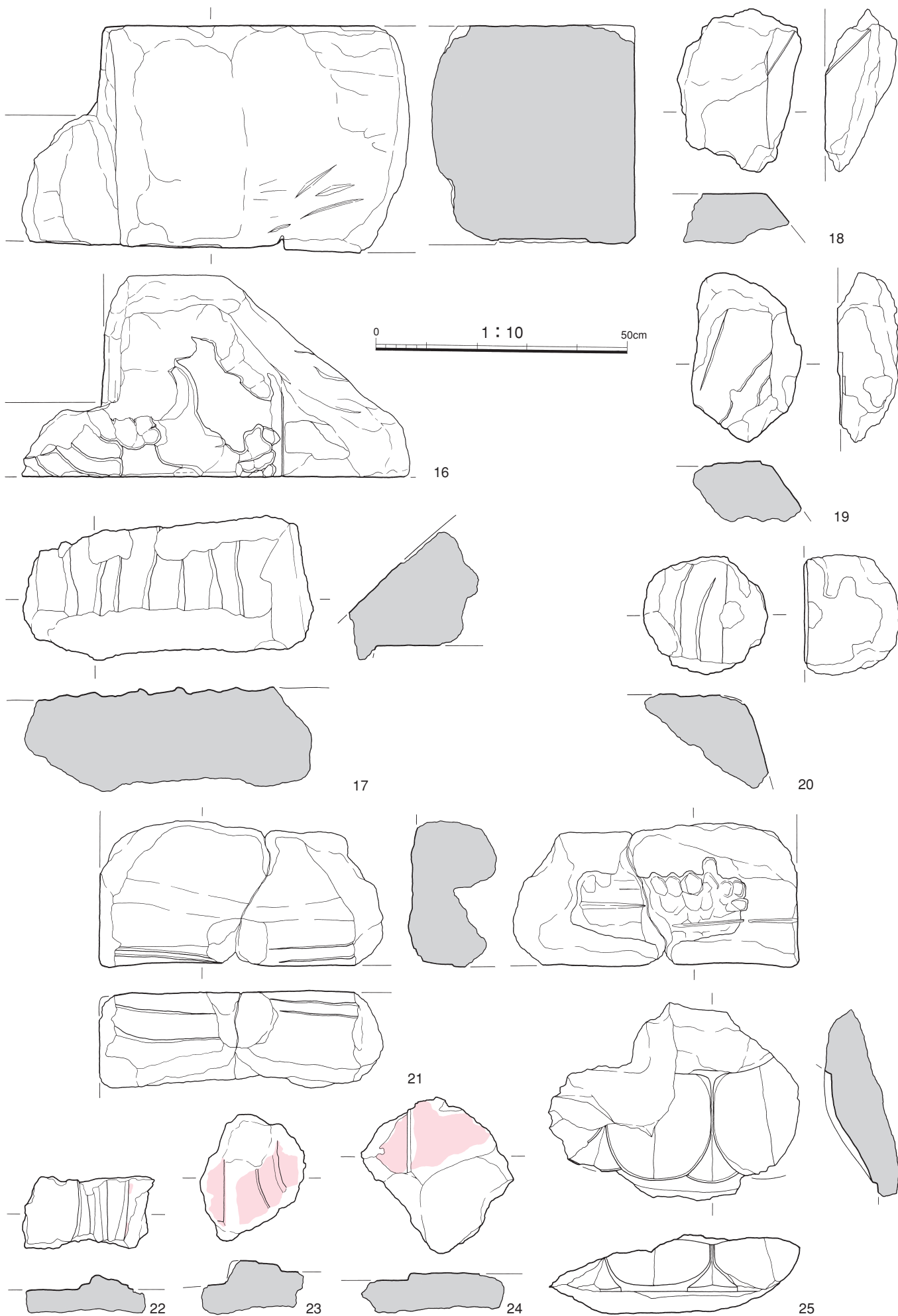


13(下面)



14

縮尺不同



16 金堂西面階段羽目石 17~21 金堂階段耳石 被熱赤変  
 22~24 浮彫りのある石材 25 東面大垣出土石材  
 1:4(16のみ1:10)

0 1:4 20cm



16(正面)



16(背面)



17(浮彫り面)



17(仕口面)



18



19



20



21(浮彫り面)



21(仕口面)



25



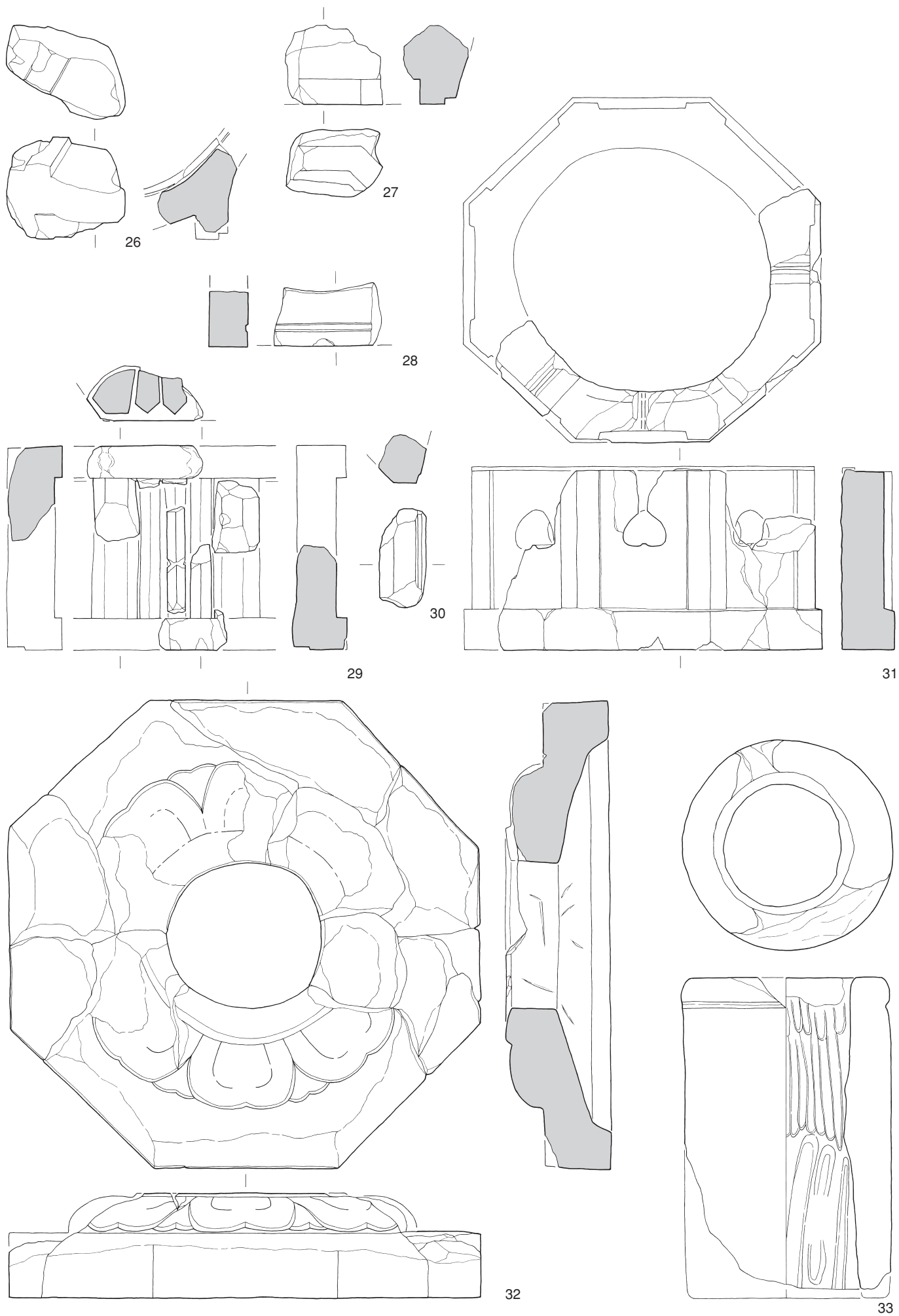
22



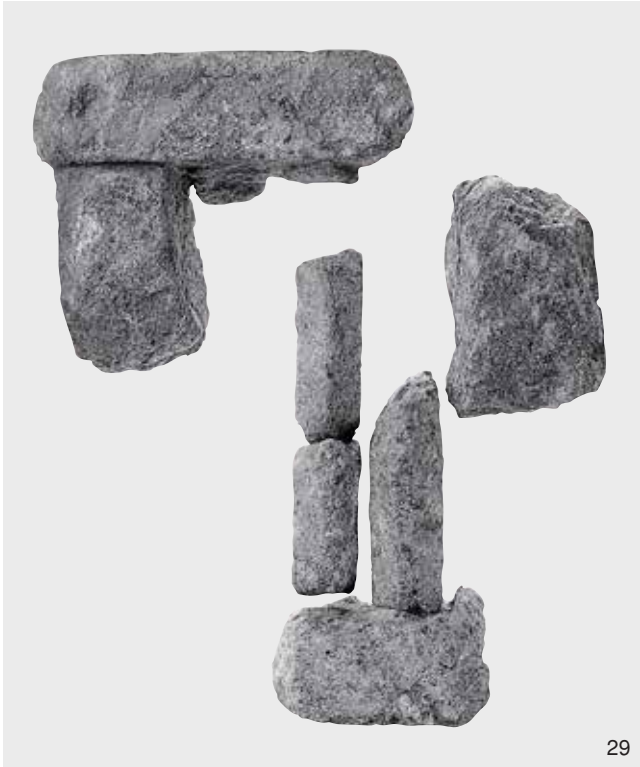
23



24



26・27 笠 28～31 火袋 32 台座 33 円筒形石材





1 アジャンタ石窟第17窟中央入口上部仏坐像



3 宝慶寺石仏三尊仏龕



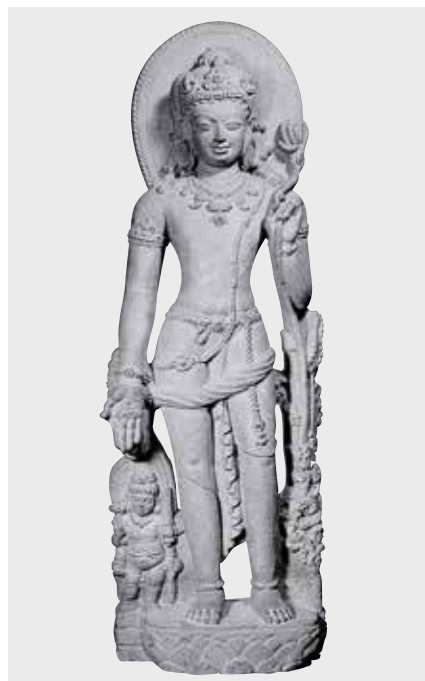
4 貞観元年銘転法輪印三尊埴仏



2 アジャンタ石窟第19窟壁画仏坐像の後屏



5 永隆三年銘銅板像



7 ナーランダ出土観音菩薩立像



6 「印度仏像」銘埴仏



8 長谷寺銅板法華説相図（部分）



9 白鶴美術館所蔵銅板像

縮尺不同