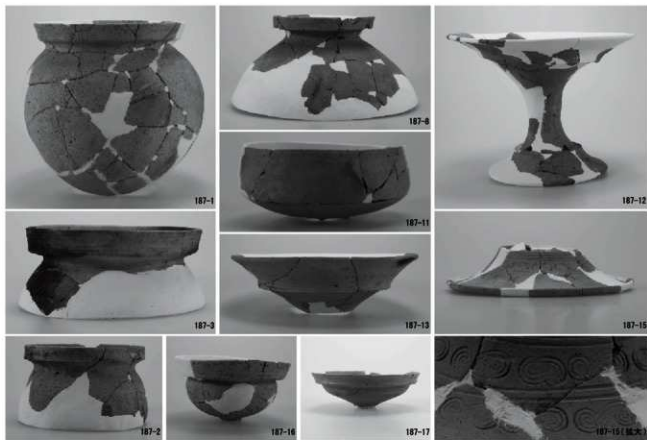
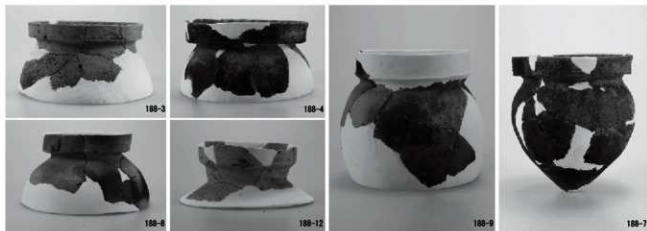


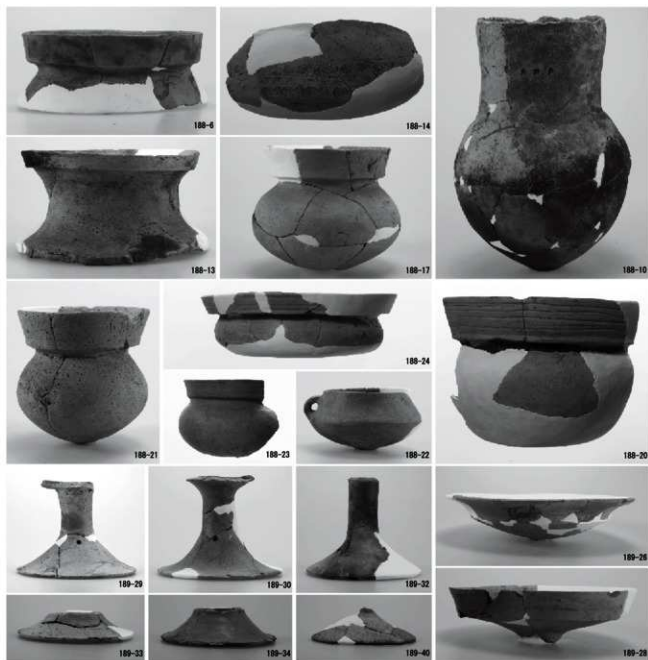
S124



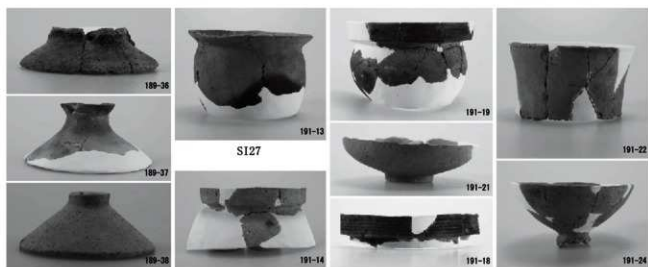
S125



S126



SI26



SI26

SI28

SI32

SI33



190-6



190-7



190-8



190-9



190-11



190-14



190-10



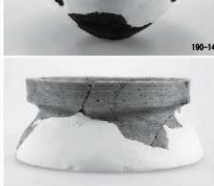
190-13



190-15



190-16



SI36



190-1



190-5



190-17



190-3



190-17 (拡大)

SI35

SI36



SK5190



SK5199



SK5195



SK5198



SK5191



192-3



SK5200



192-15



192-14



192-16

SK5200



193-7



193-4



193-6

SK5201



193-8



193-15



194-2

SK5205

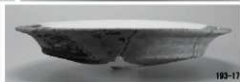


194-10

SK5215



193-12



193-17



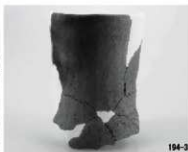
193-13



193-18



193-18 (B,C)



194-3

SK5202

SK5203

SK5207



194-5



194-9

SK5210



194-8



194-12



194-18



194-23

SK5228



194-17



194-19



194-25

SK5225



194-20



194-16



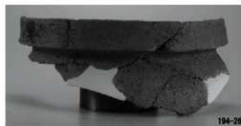
194-15

SK5216



195-1

SK5232



194-28



194-28

SK5231



195-2

SK5239



194-24



195-9

SK5226



195-7

SK5235



195-5



195-4



196-5



196-1



196-15



196-6



196-2



196-3



196-4



196-11



196-8

SK5242

SK5244



196-10



196-7



196-13

SK5243

SK5244



196-14

SK5244



197-1



197-4



197-25

SK5246



197-23



197-9



197-5



197-22

SK5256

SK5252

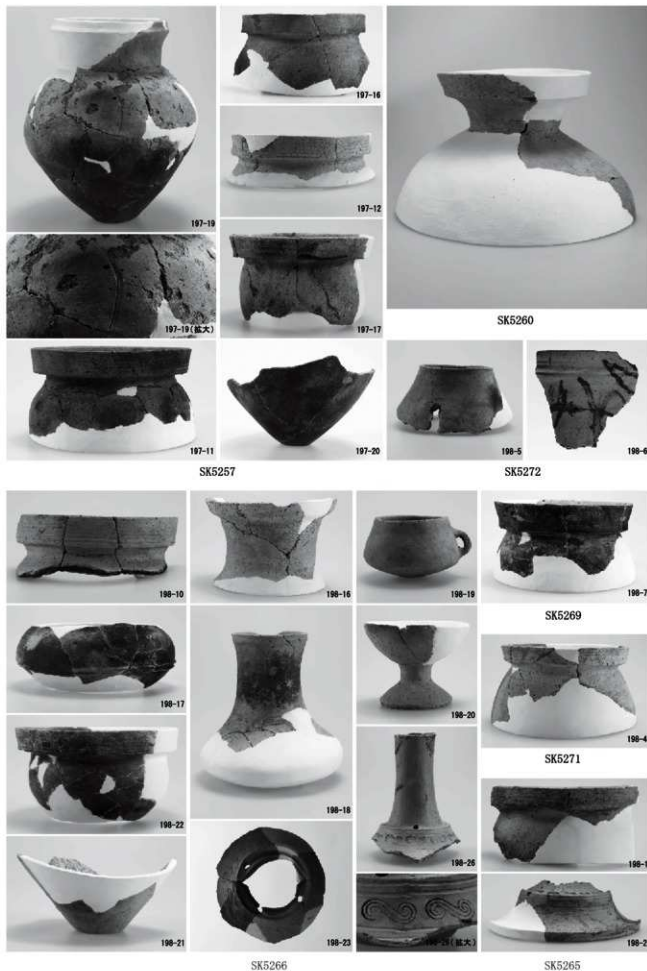
SK5257

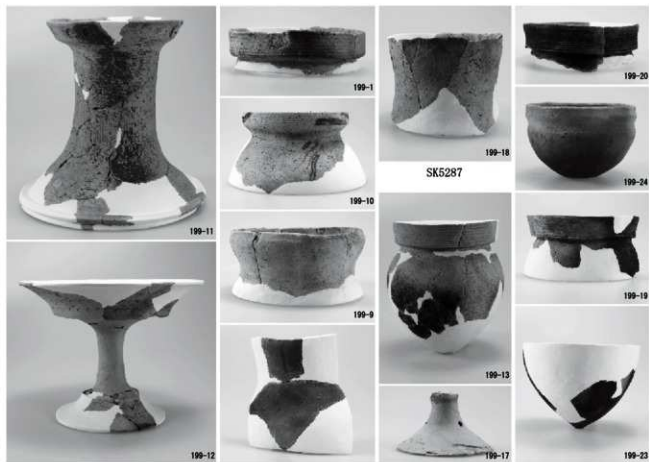


197-11



197-13





SK5282

SK5283

SK5288



SK5296



SK5302



SK5290

SK5306

SK5308





SK5314



SK5325



SK5327



SK5324



202-13



202-18



202-15



SK5326



202-20



202-18



202-19

SK5326



203-16



203-13



203-10



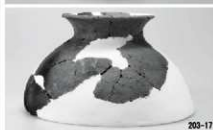
203-19



203-18



203-21



203-17



203-15

SK5336



204-14



204-8



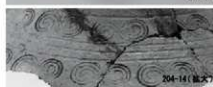
204-10



204-20

SK5339

SK5342



204-14 (拡大)



204-7



204-23



204-21



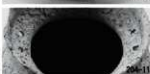
204-11



204-22



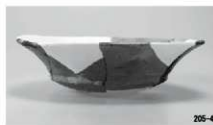
204-13



204-11

SK5339

SK5346



205-4



205-7



205-10



206-1

SK5351

SK5352

SK5355



205-5



205-4



205-12



206-8



205-8



205-13



206-7

SK5352

SK5359

SK5360



SK5361

SK5365

SK5367



SK5380

SK5385

SK5386



SK5390

SK5394



SD1053



SD1052

SD1054

SD1054



SD1056

210-10



SD1062

210-12



210-13



SD1069

210-14



210-18-19

SD1068



210-20



210-22

SD1070



211-4



211-4



211-7



211-8



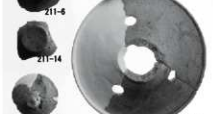
211-1

211-13



211-2

211-9



211-5

211-6



211-6

211-12



211-14

211-15



211-10



211-11



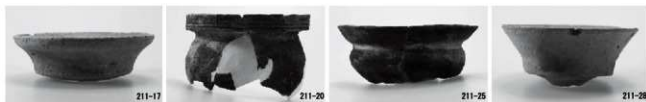
211-11



211-10 (M.2)

SD1082

SD1082



SD1085

SD1086

SD1088



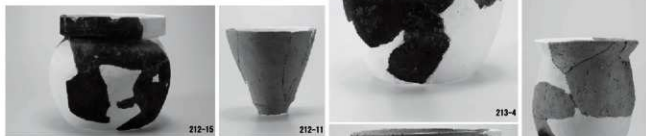
SD1091

SD1092



SD1093

SD1100

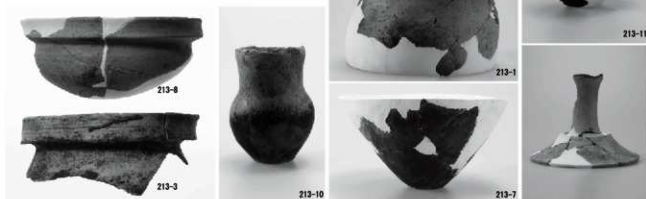


SD1099

SD1095

213-4

213-11



213-8

213-10

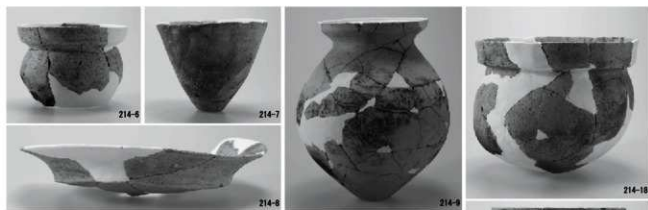
213-1

213-7

SD1101

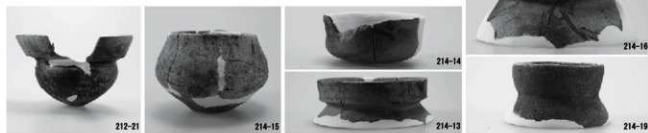


SD1101



SD1102

SD1107



SD1117

SD1113

SD1110

SD1111



216-2



216-5



216-4



216-1



SD1118



216-6



216-7



216-12

SD1121



SD1122



215

SD1129



216-18



216-19



216-13

SD1128



216-20



SD1128



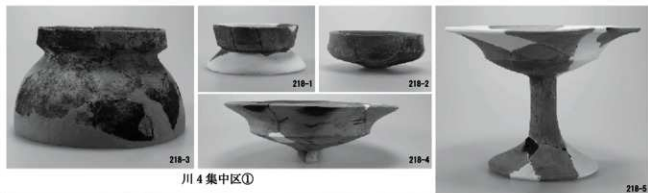
216-16

SD1128

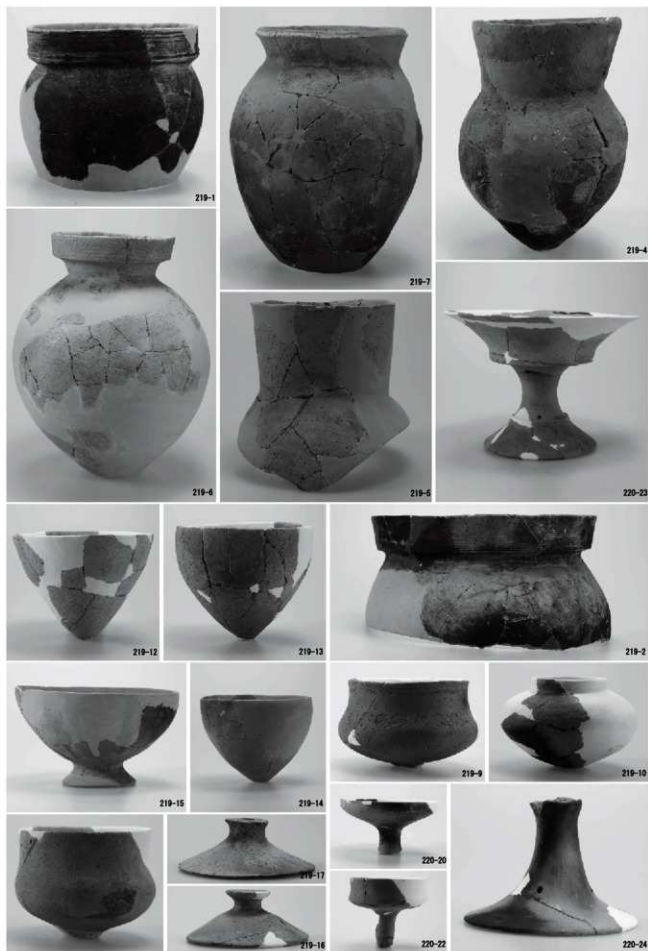


216-15

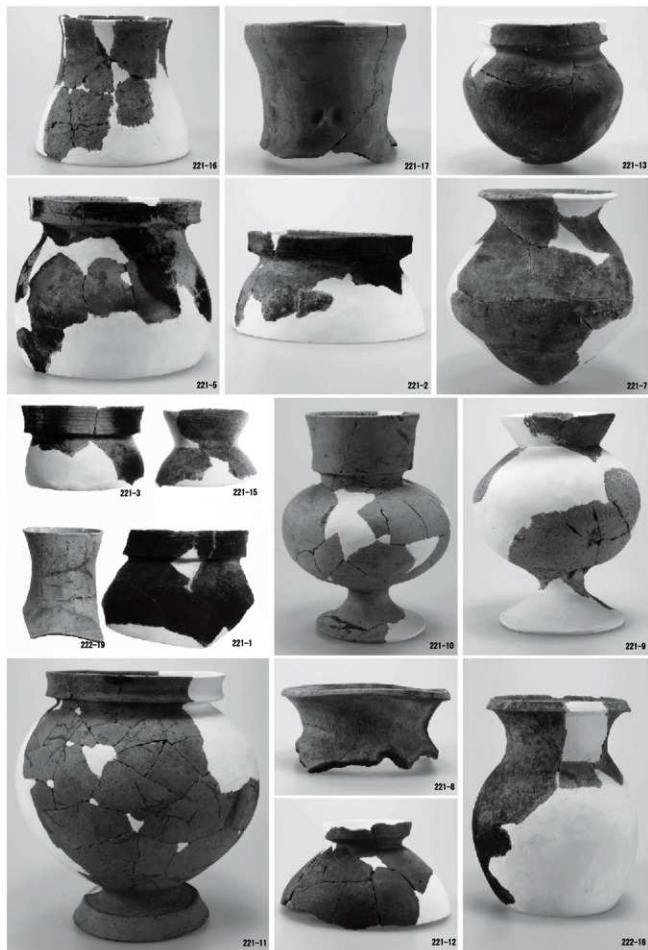
SD1128

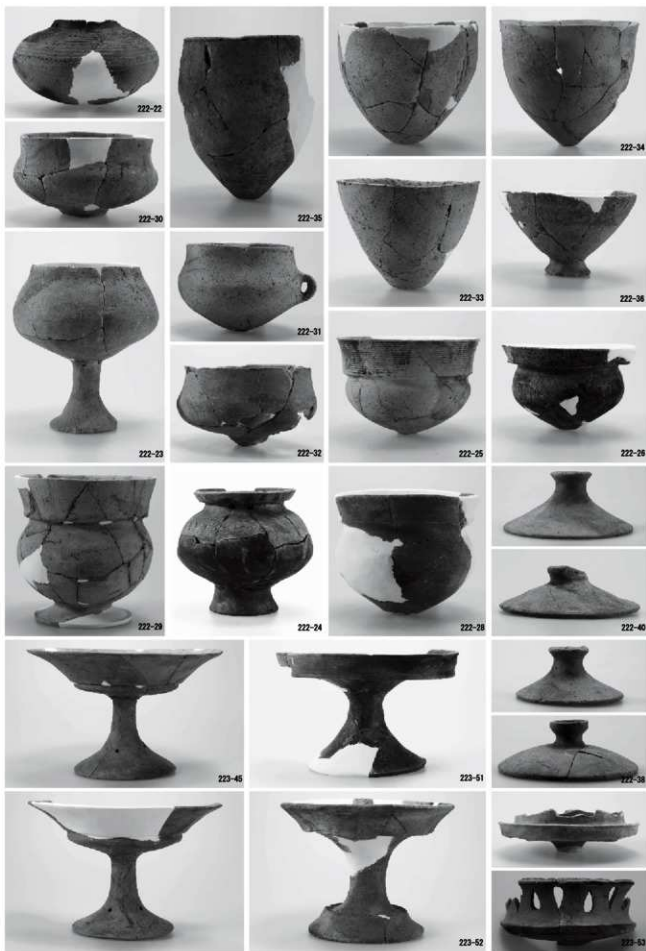






図版第九二 遺物 土器（中地区その他の遺構）







224-1



224-2



224-5

A82 区集中区



224-13



224-4



224-3



224-14

A82 区集中区

C・D93・94 区集中区



224-11

C95 区集中区



224-9



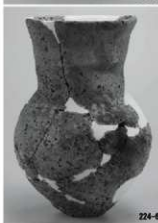
225-1



225-2



225-3



224-8

A・B95・96 区集中区



225-4



225-6

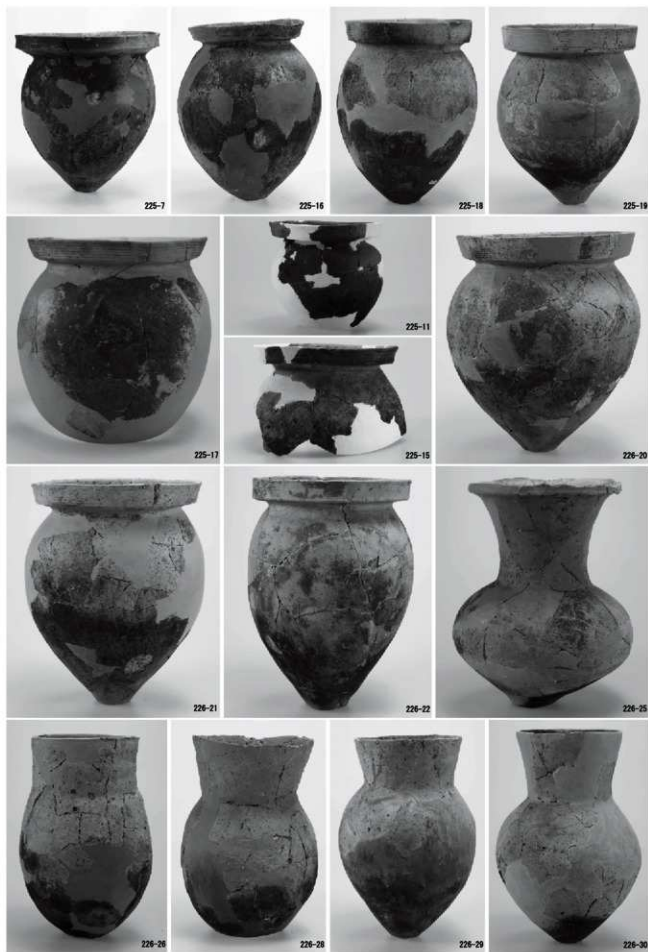


225-8

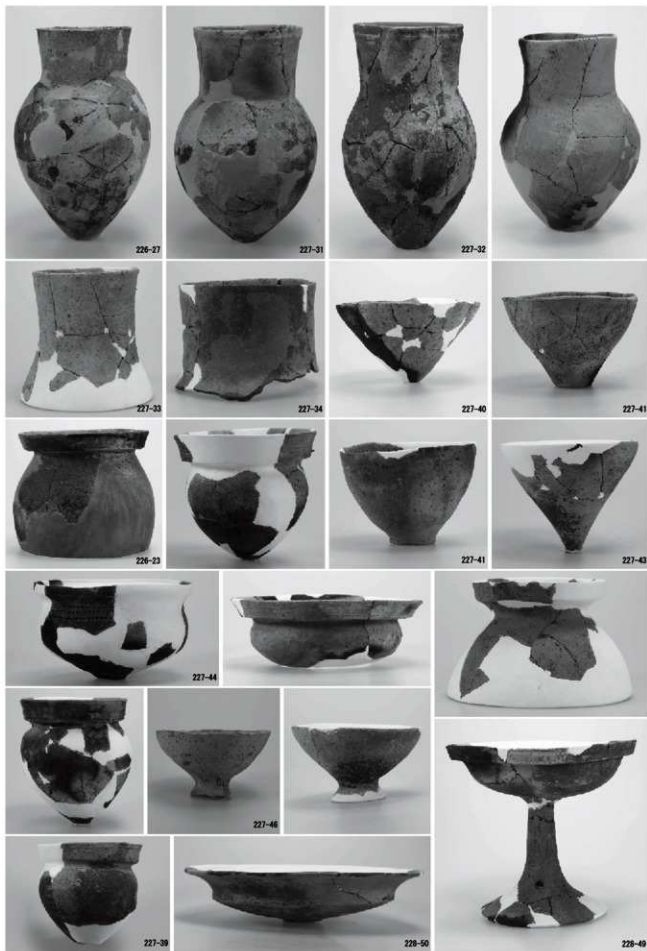
85・86 区谷



225-5



図版第九六 遺物 土器（中地区土器集中区）





227-47



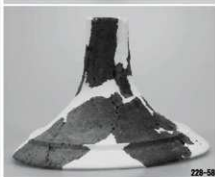
227-48



228-51



228-55



228-58



228-54



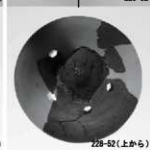
228-52



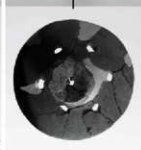
228-59



228-54(上から)



228-52(上から)



228-56



228-53

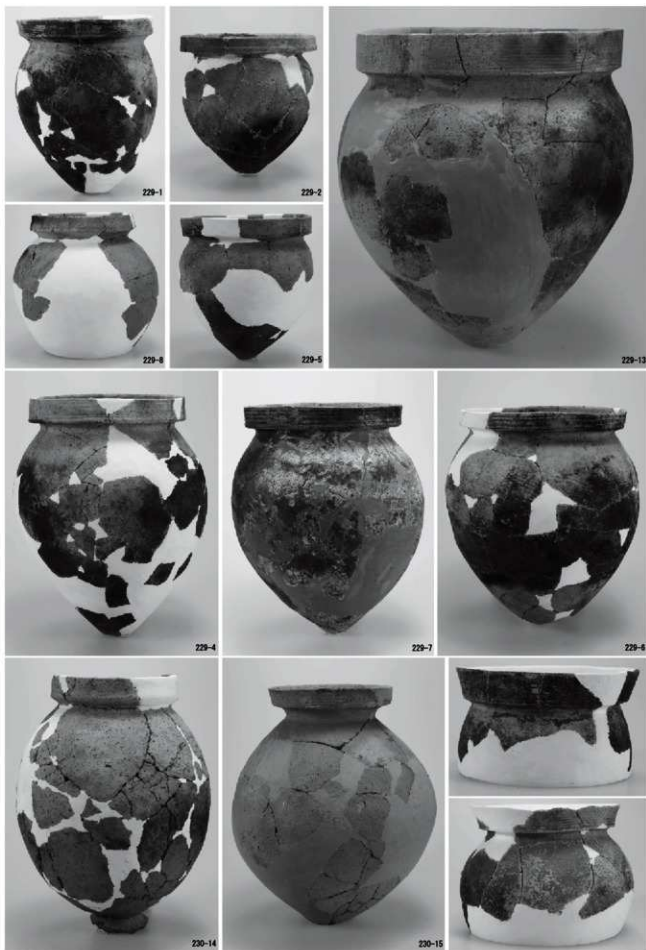


228-61

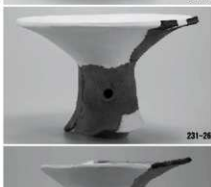
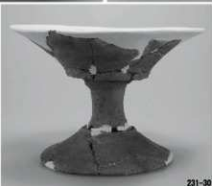


228-60

図版第九八 遺物 土器（中地区包含層）











234-1

234-4

234-12

234-8

SI39



234-28

234-9

234-10

SI42

SI40



234-24

233-4

233-1

233-11

SI42

SI41

SI46



235-1

235-3

233-20

233-15

235-6

235-8

233-18

SI45

SI47



236-12



236-4



236-12

236-16

SK5416

SK5422



S149

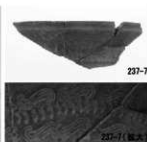
235-13



237-1



237-6



237-7

237-7, 8, 9

SK5427

SK5432

SK5434



SK5437

237-9



SK5470

236-22



238-2



SK5450

238-3



SK1264

236-20



SK5459

238-1



SK5412



SK5474

236-25



238-2

SK5450



239-3

SK5459



240-5

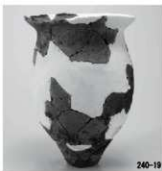
SD1136



240-8



241-4



241-19



241-12



240-15



241-5



241-18

SD1158



241-9



240-12-13



241-6



SD1165



241-7



240-7

SD1155

SD1157

SD1159



242-1



242-5



243-7



242-6



242-4

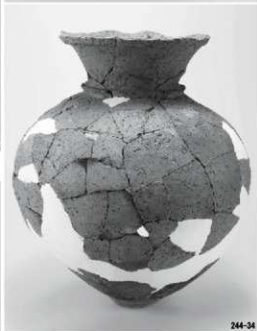
E144 区集中区



243-22



243-3



244-34



244-35



244-35(上か6)

244-35(底文)

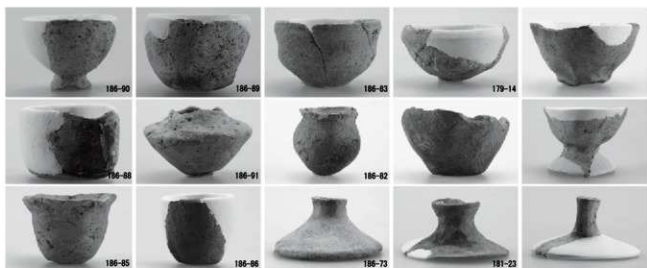


244-29-30



東地区遺構出土

145-23



東地区包含層出土

186-90

186-89

186-83

179-14

186-88

186-91

186-82

186-85

186-86

186-73

181-23



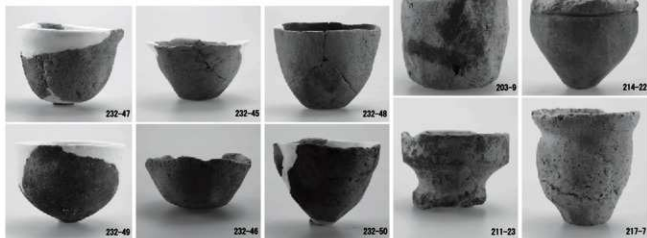
中地区遺構出土

192-21

167-11

211-26

194-11



中地区包含層出土

中地区遺構出土

232-47

232-45

232-48

203-9

214-22

232-49

232-46

232-50

211-23

217-7



西地区遺構出土

川5(中地区)出土

241-15

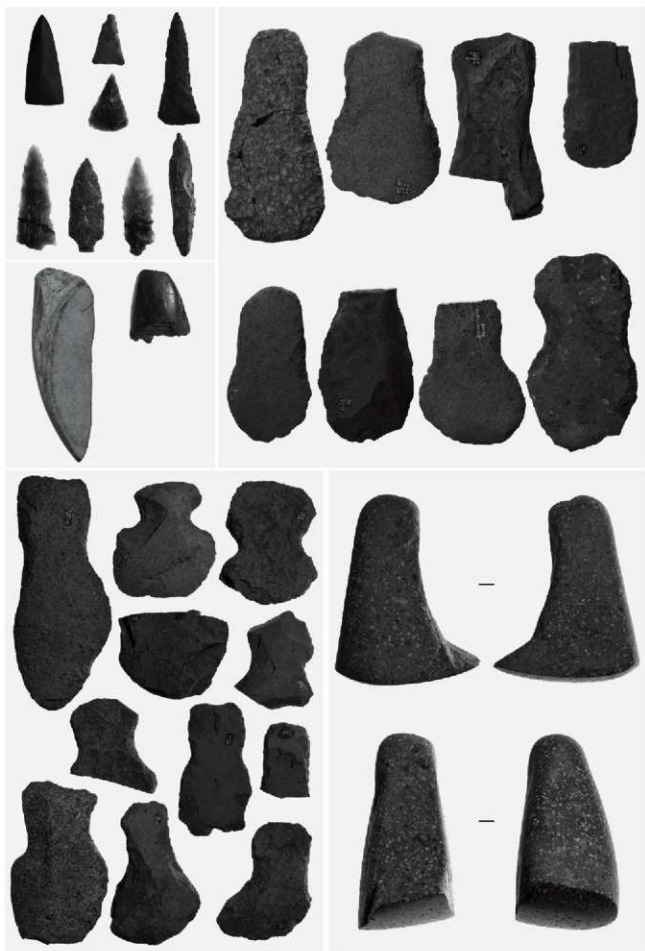
222-44

222-39

222-43

222-42

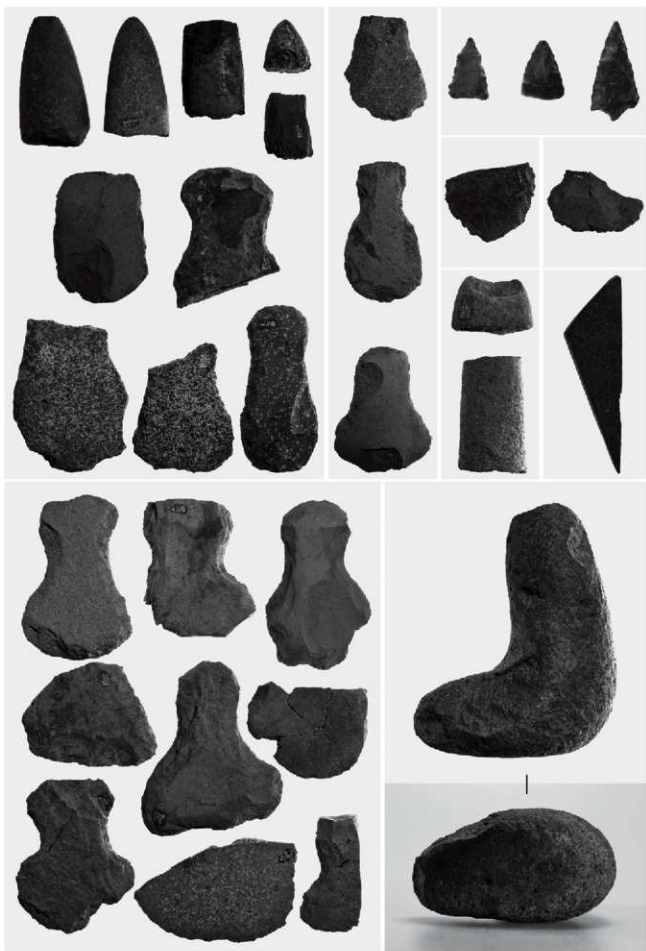
図版第一〇六 遺物 石器(東地区)







图版第一〇八 遺物 石器(西地区)





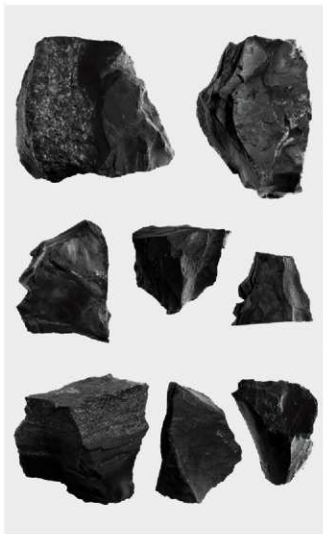
東地区出土



中地区出土



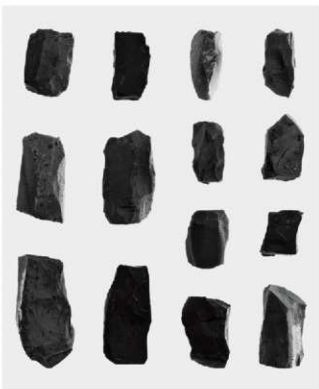
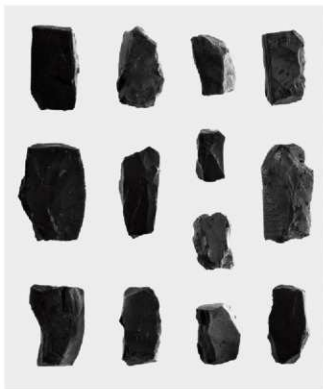
西地区出土



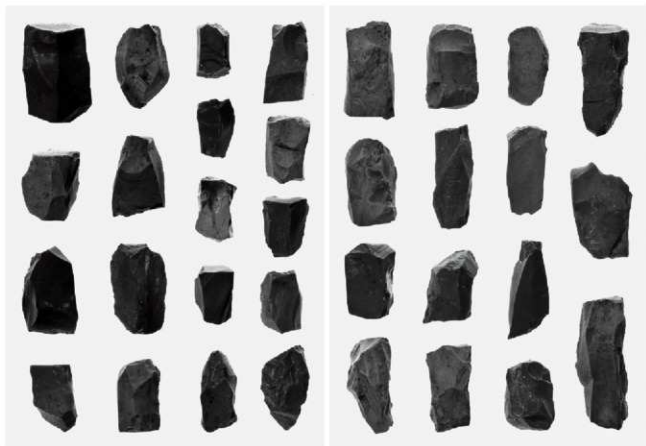
原石～荒割段階



荒割段階



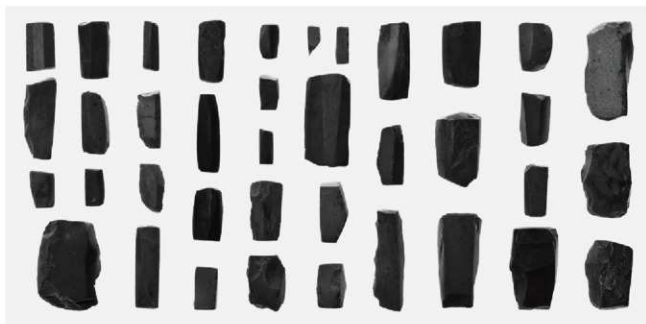
角柱状未成品（大）



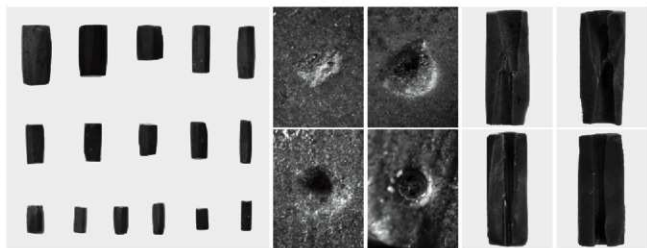
角柱状未成品(大)



角柱状未成品(小)



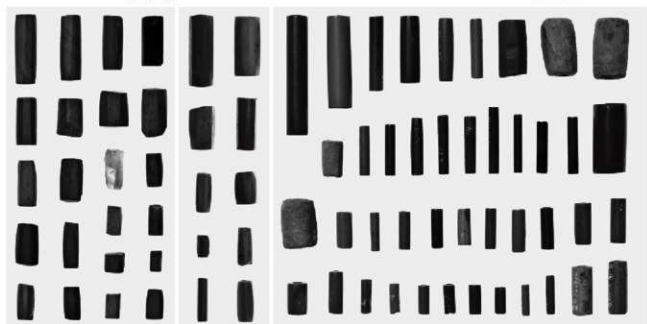
研磨未成品



穿孔直前

穿孔準備面

穿孔断面



穿孔初期

仕上げ直前

管玉



勾玉木製品 (41-43)・土製勾玉 (44-46)

勾玉

ガラス小玉

