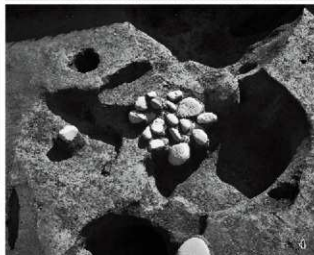


図版第三二 遺構（下層西地区）



1.SK5442, 2.SK5474, 3.SK5540, 4.SK5429, 5.SK5472, 6.SK5456



1.E141区集中区甕、2.E141区集中区長頸壺、3.T150区土器、4.土器出土状況、5.A126土器、6.SK5450土器棺、7.SK5459土器棺、8.SK5459断面

図版第三四 遺構（中層水田面）



1.30～72区全景（東から）、2.30～72区全景（西から）、3.40～48区緩衝地区、4.緩衝地区土層断面、
5.川2全景（北から）、6.畦と馬蹄跡



1.75～96区全景（東から）



2.75～96区全景（西から）



3.96～121区全景（東から）

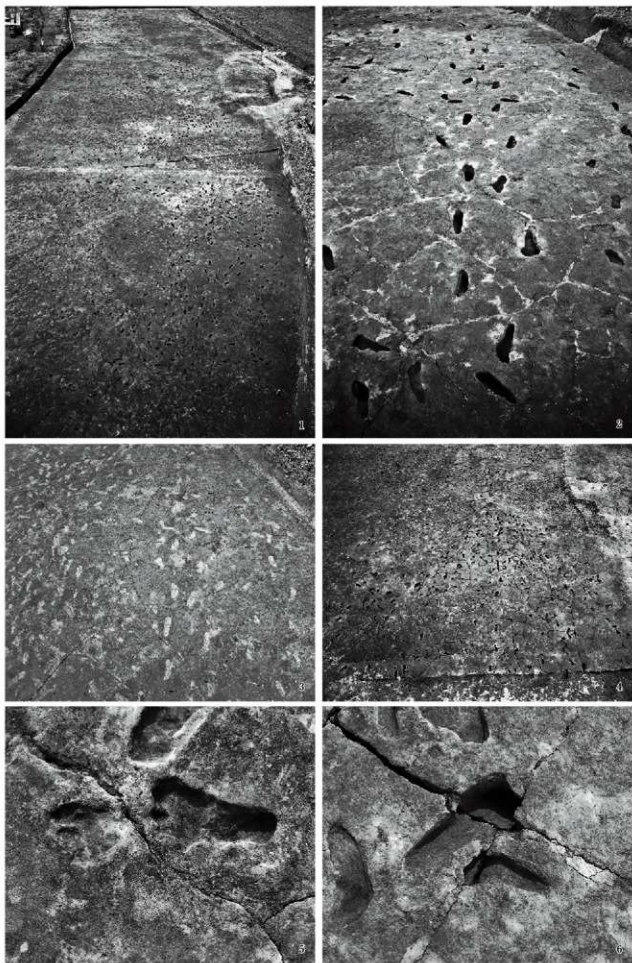


4.96～121区全景（西から）

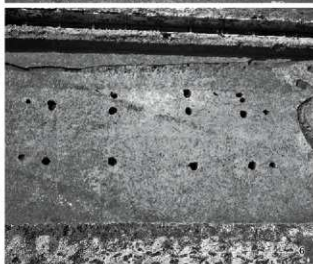
図版第三六 遺構（中層水田面）



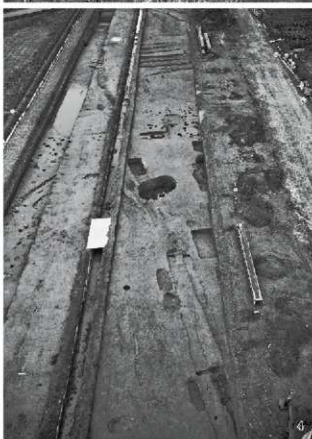
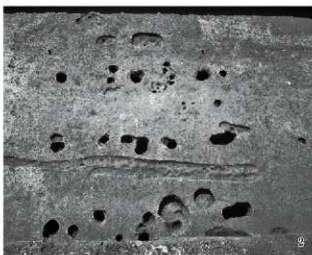
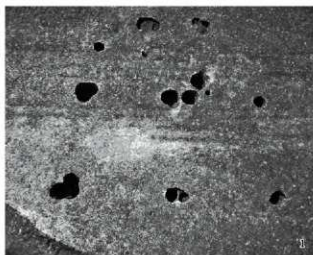
1.123～142区全景（西から）、2.143～154区全景（北東から）、3.SD1134上層、4.SD1134上層取水口、5.C137土器出土状況、6.取水口？



1. 足跡集中地区、2. 歩行状況、3. 検出状況、4. 集中区拡大、5. 足跡拡大、6. 足跡拡大



1.1～27区北半部全景（西から）、2.1～27区南半部全景（東から）、3.SB01・02、4.SB01、5.SB02、6.SB04

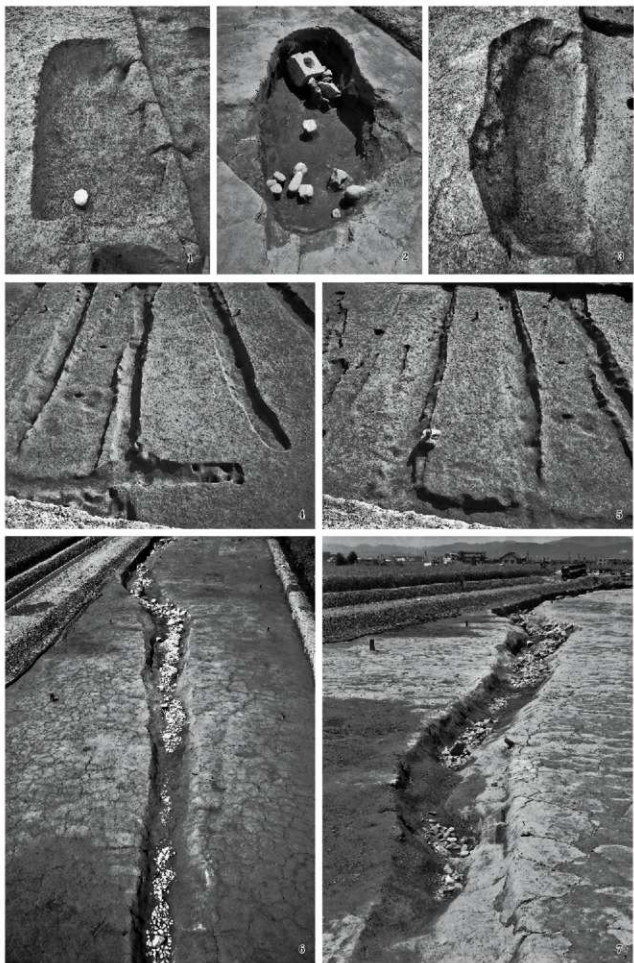


1.SB05、2.SB06、3.30～63区南半部全景（西から）、4.30～63区北半部全景（東から）、5.SB07、6.SB10・11

図版第四〇 遺構（上層中世）

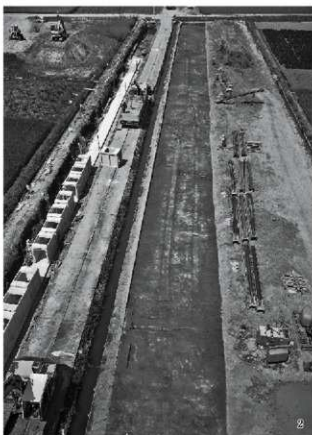


1.SE01、2.SE02、3.SE03・04、4.SE04断面、5.SK25、6.SK32、7.SK39、8.SK38

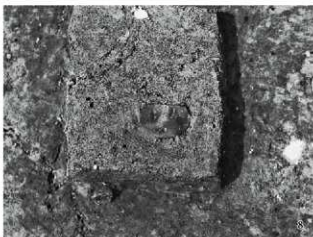


1.SK41、2.SK19・20、3.SK30、4.畝状遺構、5.畝状遺構、6.SD42南半部全景、7.SD42近景

図版第四二 遺構（上層中世）

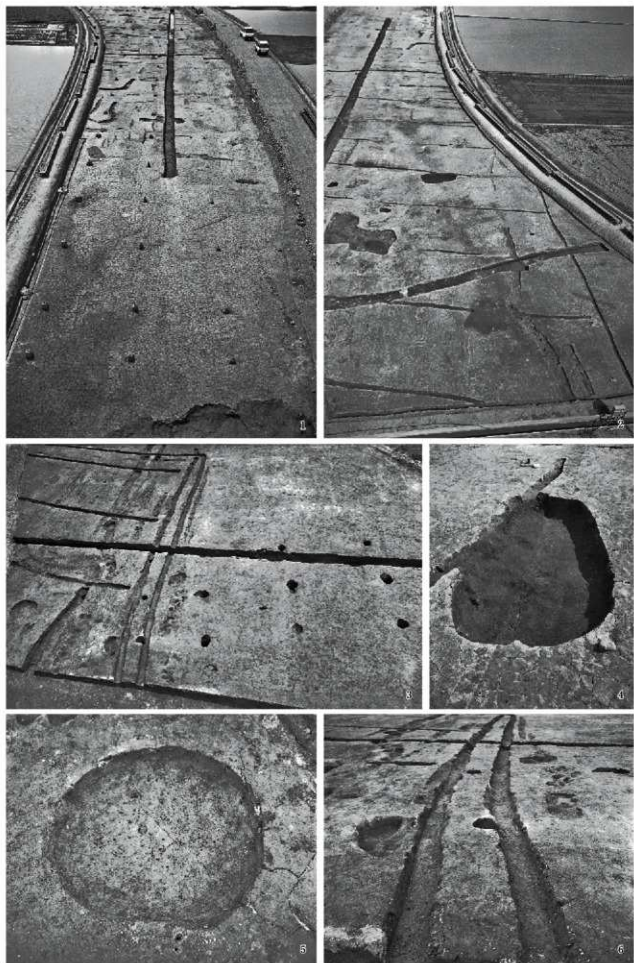


1.97～121区南半部全景（東から）、2.97～121区全景（東から）、3.SB08、4.SK54、5.SK42、6.SK45



1. SE06全景、2. SE06縦板枠と曲物枠、3. SE06遺物出土状況、4. 漆桶出土状況、5. SE06井戸枠側面、6. SE06曲物枠側面、7. 83・84区溝列、8. 丸駒出土状況

図版第四四 遺構（上層中世）

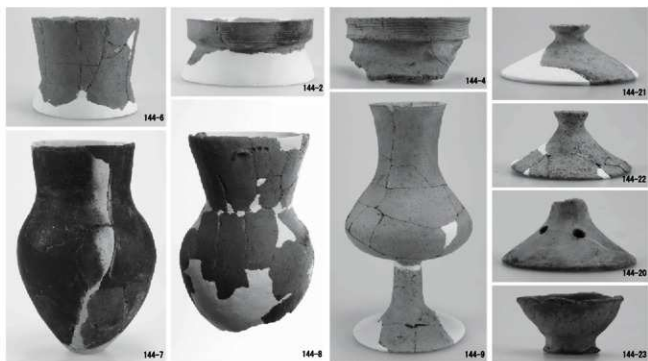


1.123~142区全景（東から）、2.123~142区全（西から）、3.SB09、4.SK61、5.SK64、6.SD123・126

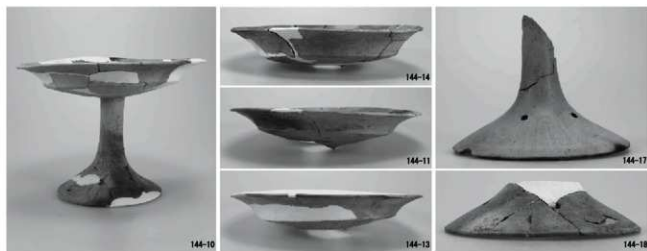




SI01



SI01 中央土坑

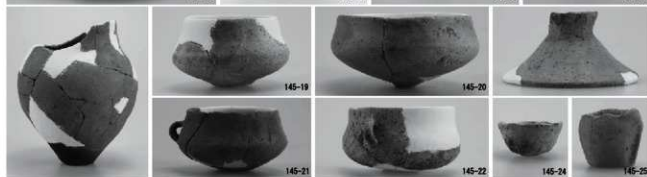


SI01 中央土坑



SI02

SI03



SI03



SI07

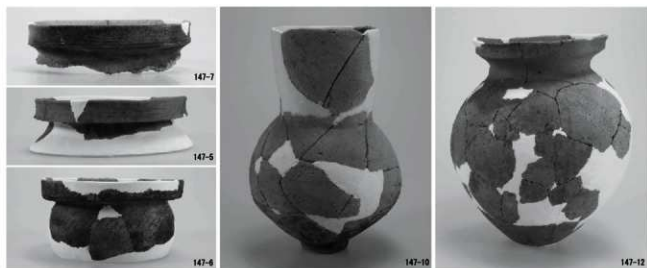
SI03



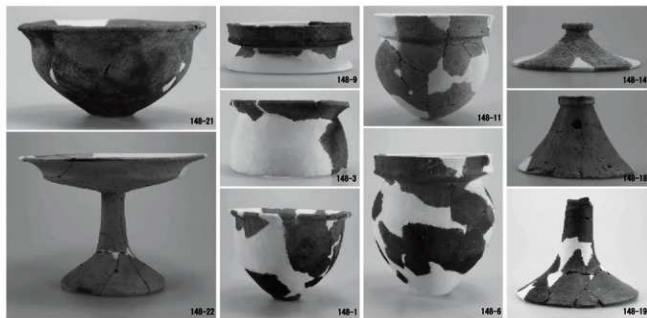
S106



S108

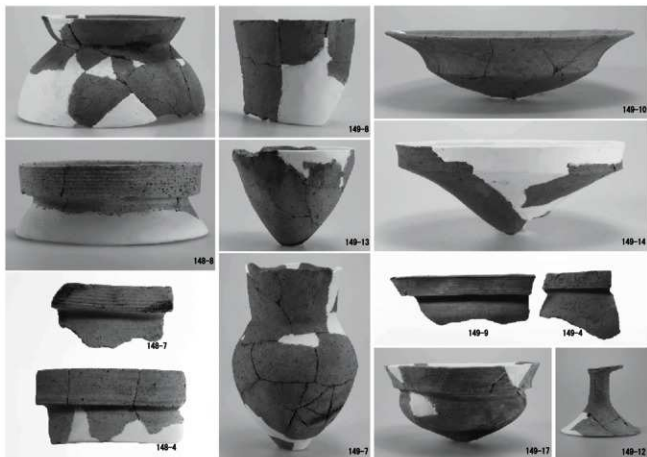


SI08



SI09

SI11

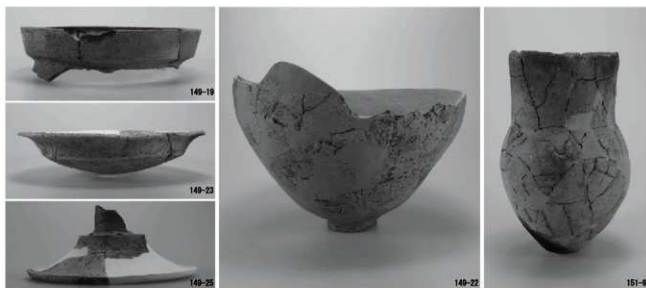


SI11

SI12

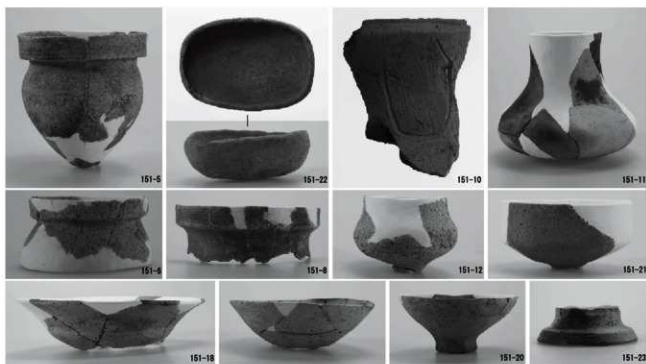


SI13

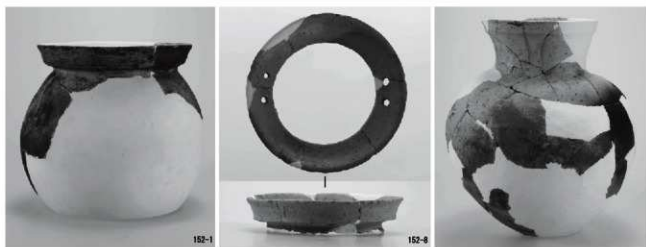


SI15

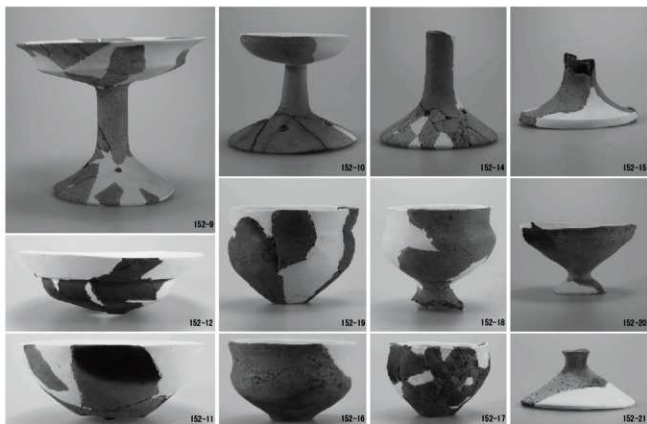
SI19



SI19



SI20



S120



S121

S123



155-4



155-3

SK5043



155-11

SK5033



155-8



155-4



155-5

SK5039



155-9



155-7

SK5032



155-15

SK5038



156-17



156-12



156-24



156-23



156-20



156-11



156-14



156-28



156-21



156-27



156-25



156-28

SK5044

SK5045



SK5049



SK5058



157-5



157-3



157-9



157-6



157-1



157-2



158-1

SK5050

SK5059

SK5064



158-11



158-13



158-14



158-19



158-22



158-16



158-20

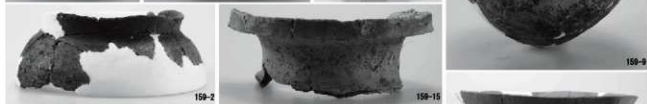
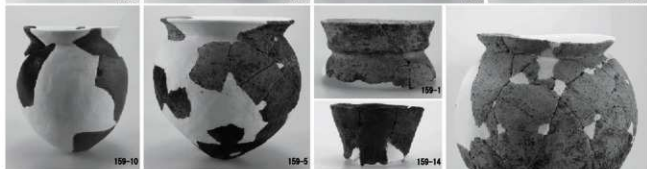
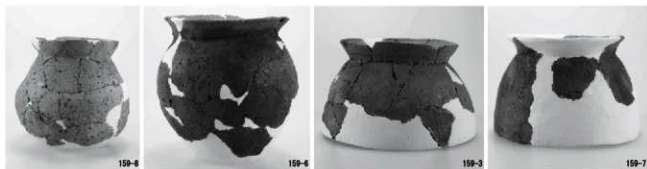


158-15

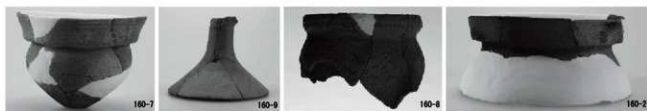


158-18

SK5071



SK5073



SK5074



SK5077

SK5078

図版第五六 遺物
土器（東地区土坑）

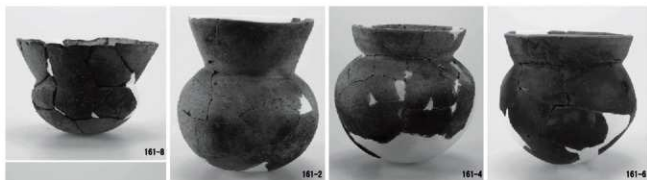


SK5081

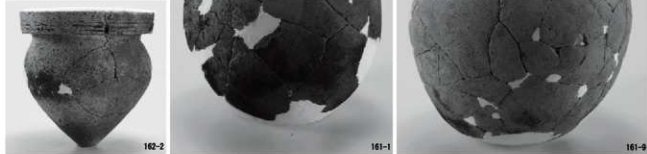
SK5083

SK5084

SK5085



SK5087

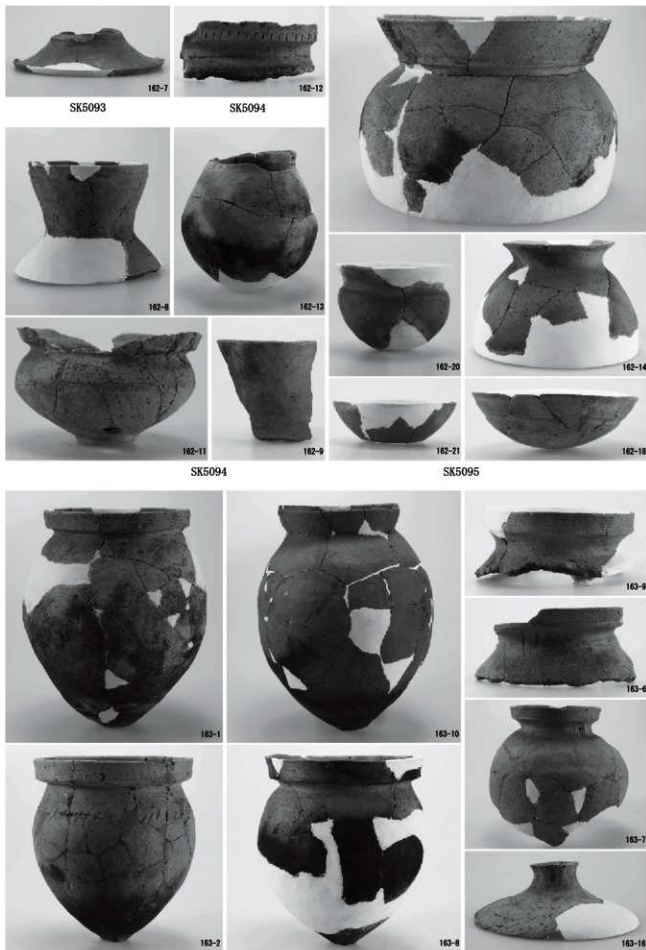


SK5088

SK5087



SK5089





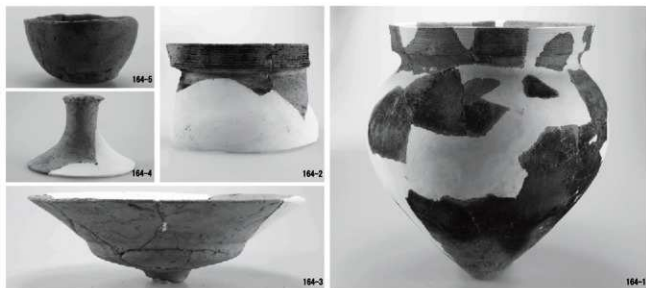
SK5100



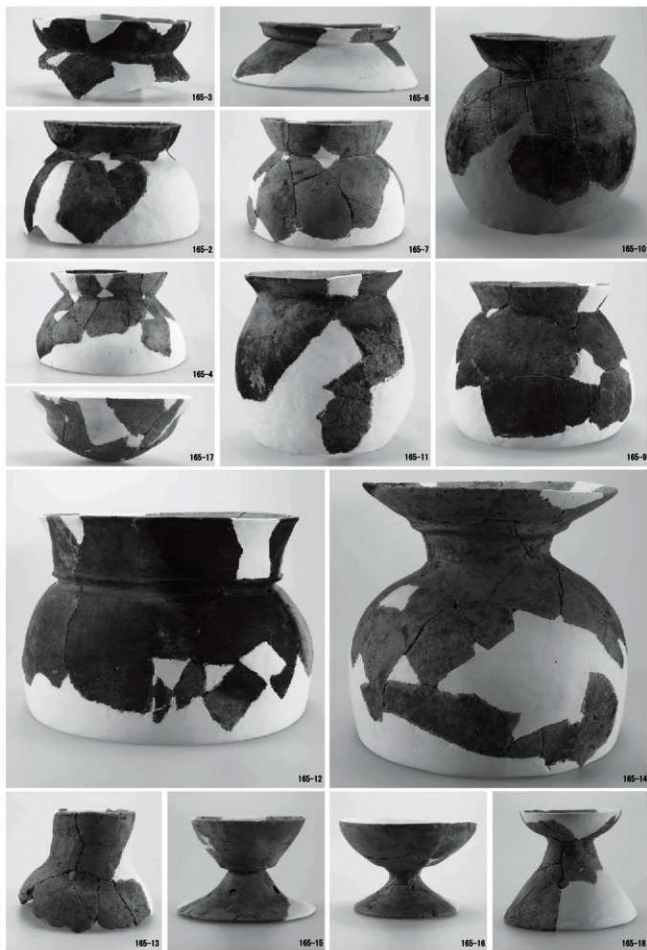
SK5110

SK5104

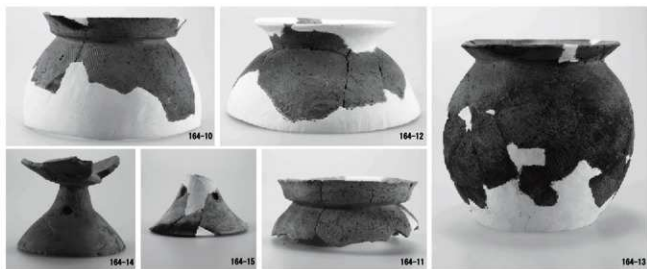
SK5108



SK5126



図版第六〇 遺物 土器（東地区土坑）



SK5128



SK5129

SK5138



SK5130



SK5143

SK5143



166-13



166-18

SK5146



167-1



167-4

SK5151



SK5155



167-2



167-3

SK5147



167-8

SK5152



167-9



167-10

SK5162



167-5



167-12



168-2

SK5167



167-6

SK5159



167-14



168-5



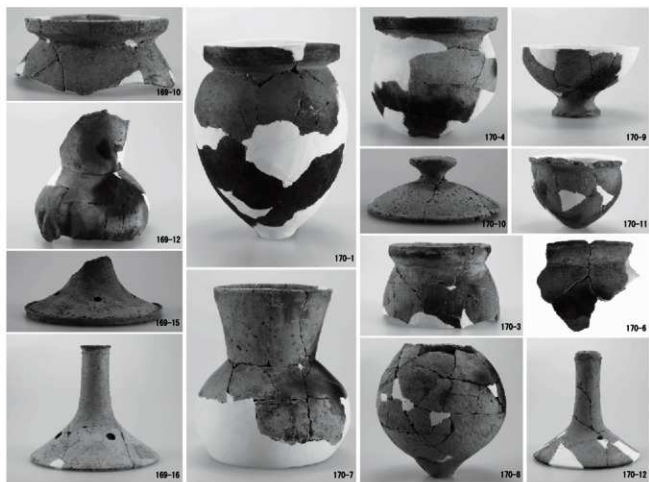
168-4

SK5173

SK5163



SD1002



SD1005

SD1006







墳塚周辺



SX03

SX01

SX05



175-11



175-14



175-13



175-12



175-15



175-17

A3 区集中区



176-3



176-2



176-1



176-4



176-5



176-6



176-7

A7 区集中区



176-7



176-6



176-8

A8 区集中区



177-1



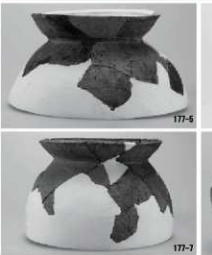
177-2



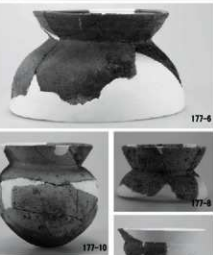
177-3



177-4



177-5



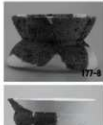
177-6



177-7



177-16



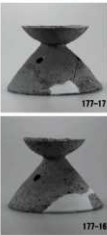
177-8



177-9



177-11



177-17



177-12



177-16



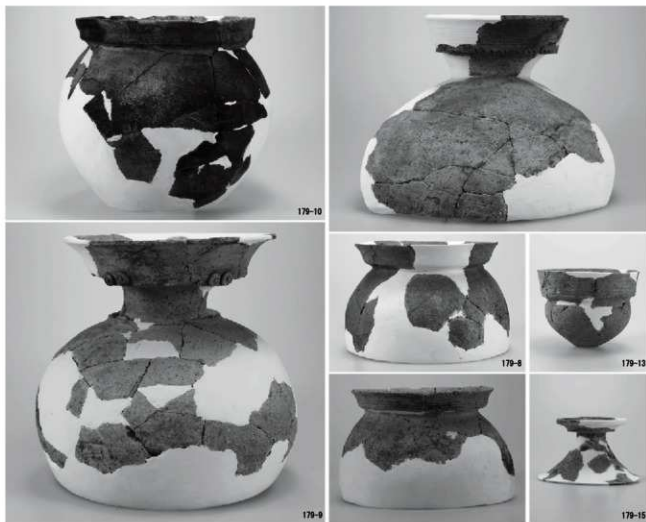
177-15

A33 区集中区

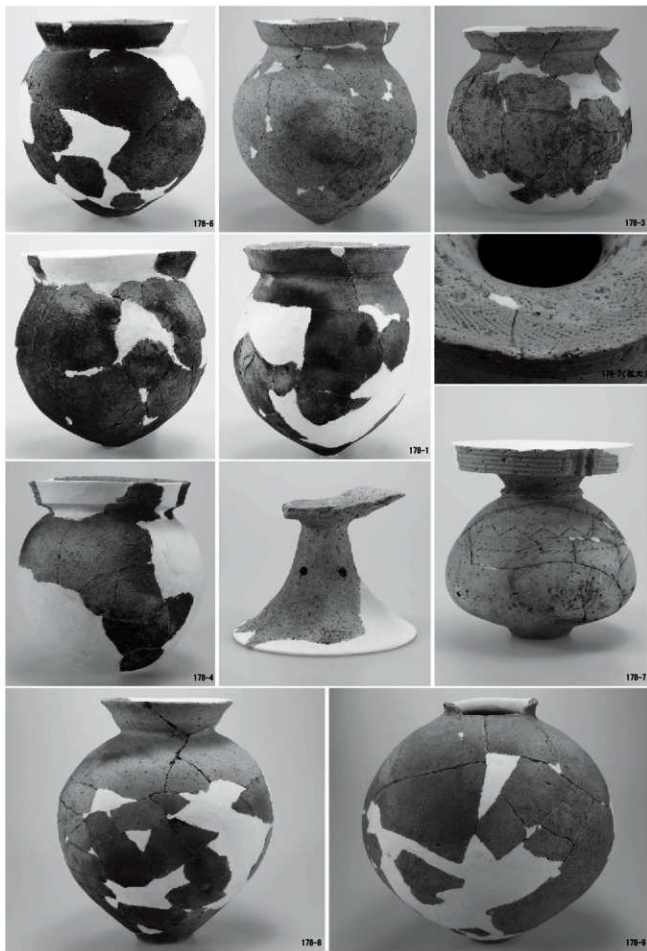


A34 区集中区

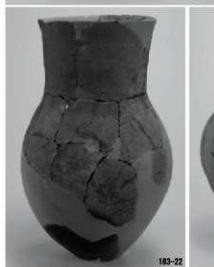
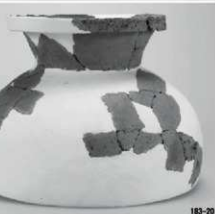
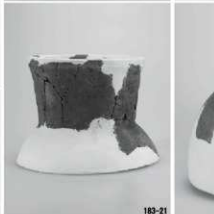
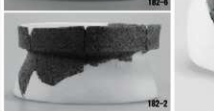
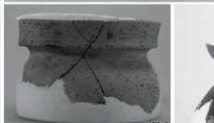
A35 区集中区



A・B40 区集中区

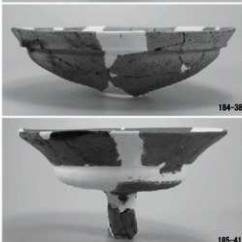


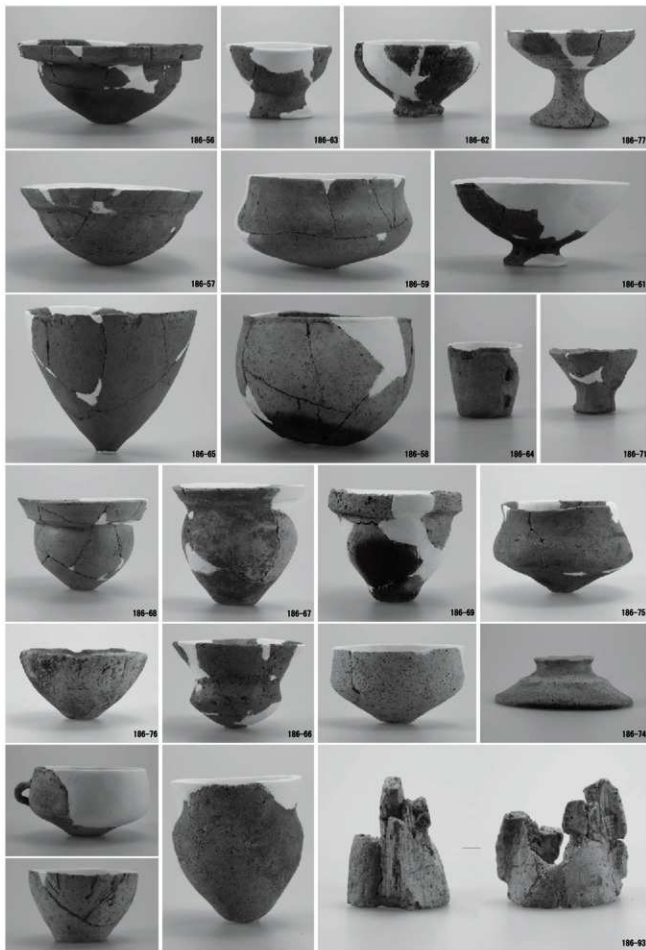
図版第七〇 遺物 土器（東地区包含層）





図版第七二 遺物 土器（東地区包含層）





図版第七四 遺物 土器（東地区包含層）

