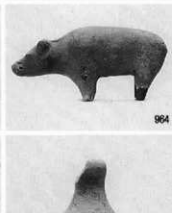
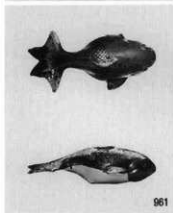
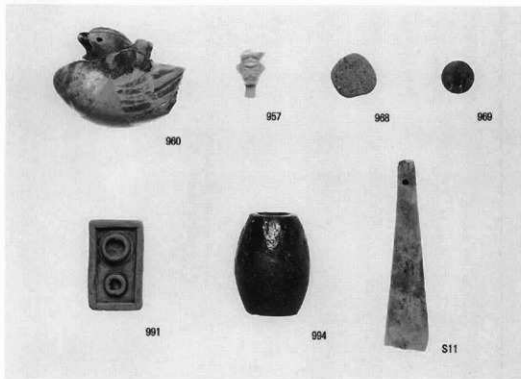


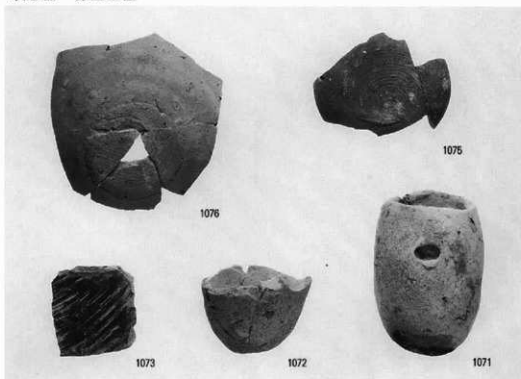
人形・玩具類



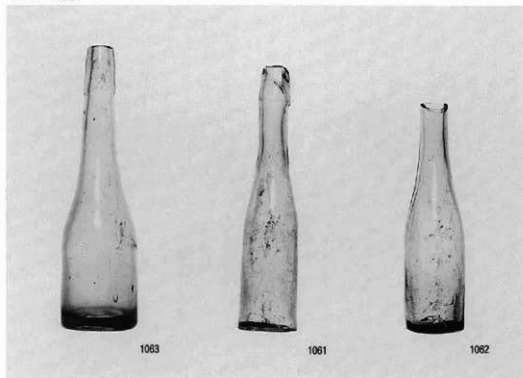
玩具類



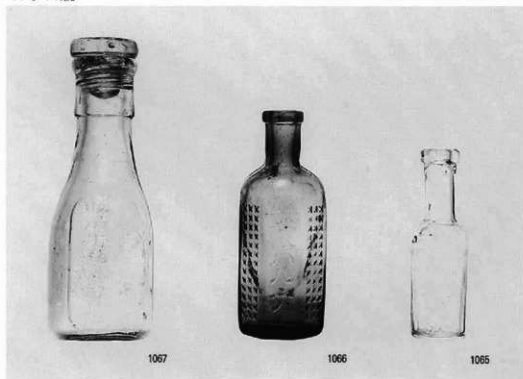
須恵器・弥生土器



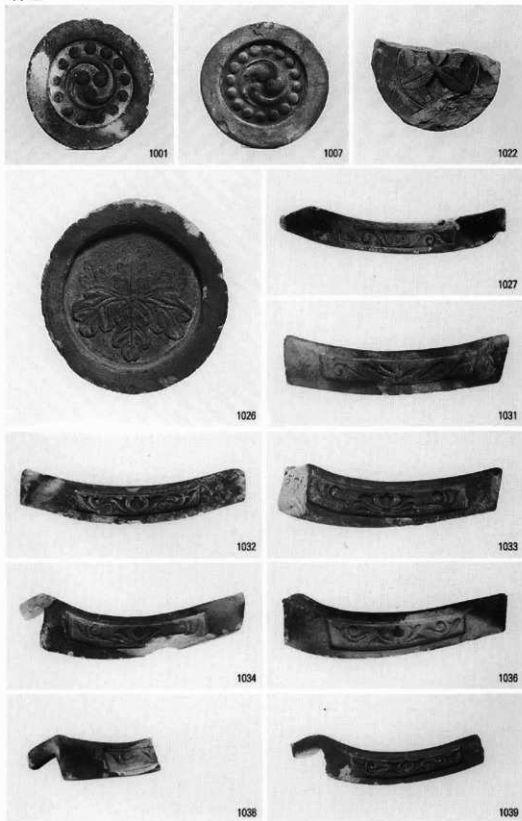
ガラス瓶



ガラス瓶



轩瓦



汽車土瓶



漆器



W4



W5



W1



W10



W11



W18



W9



W14



W19



W17

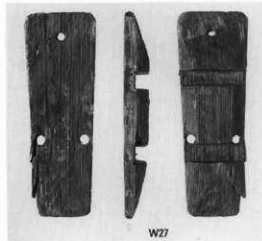
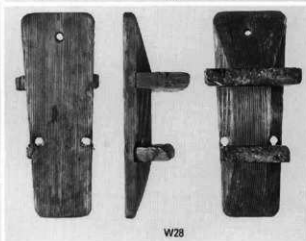
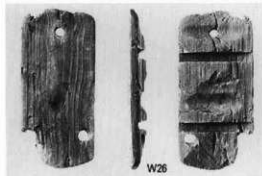
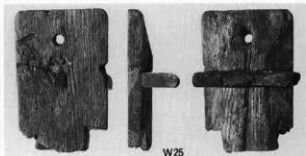
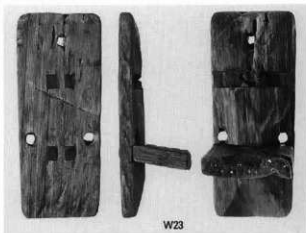
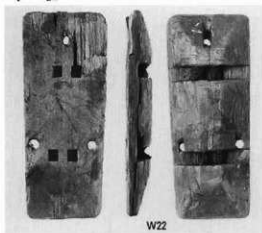


W20

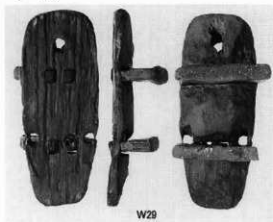


W21

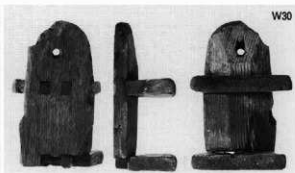
下 駄



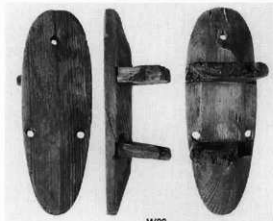
下 駄



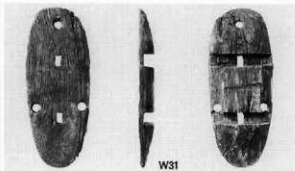
W29



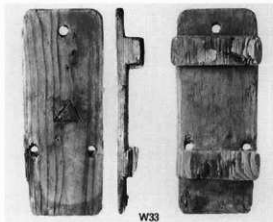
W30



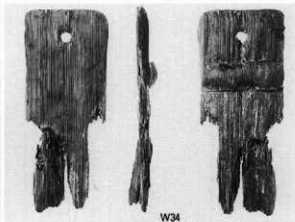
W32



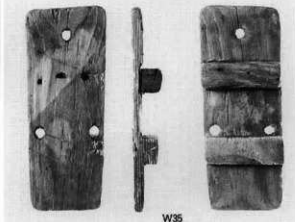
W31



W33



W34

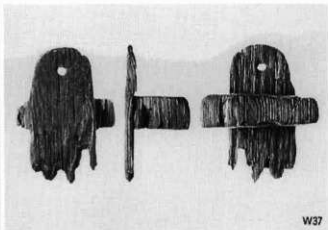


W35

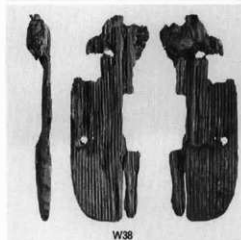
下 駄



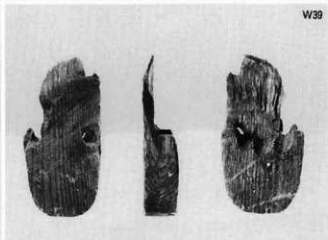
W36



W37



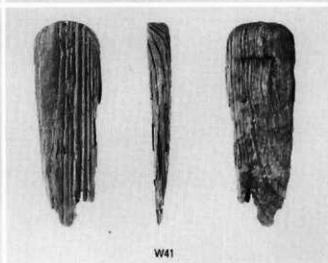
W38



W39



W40



W41

木製品



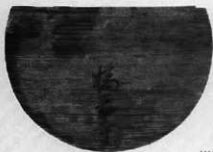
W43



W42



W51



W44



W53



W52



W111



W101



W55



W34



W56



W65

水道管継手



W69



W71



W70

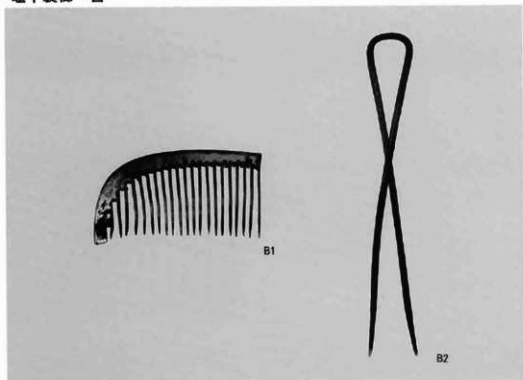


W72

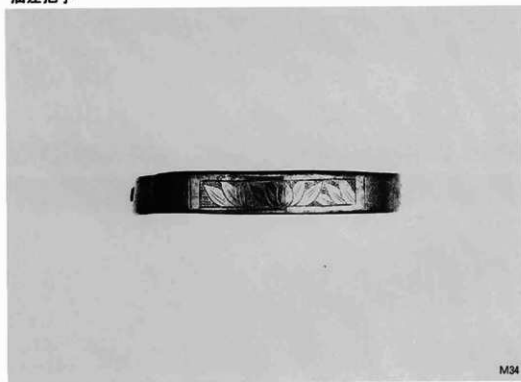


W73

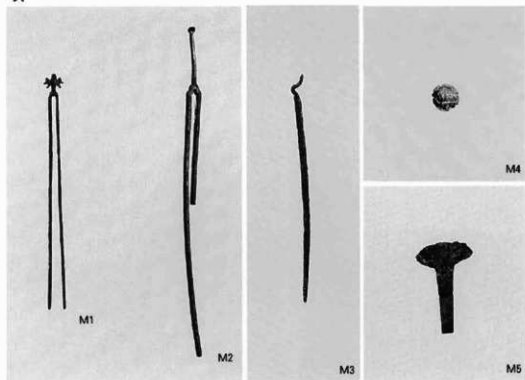
鹿甲製櫛・簪



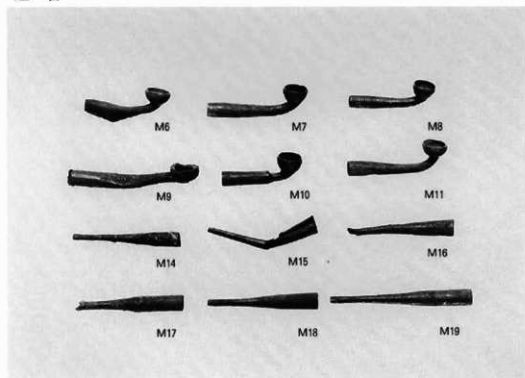
油燈把手



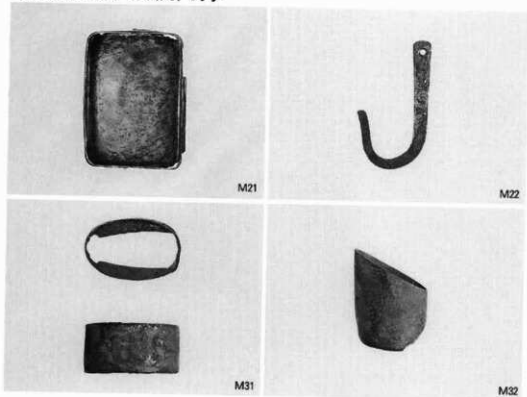
筭



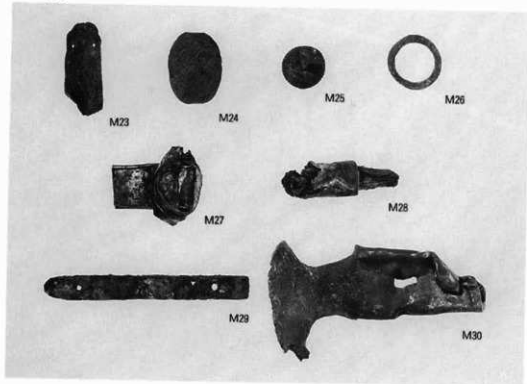
煙管



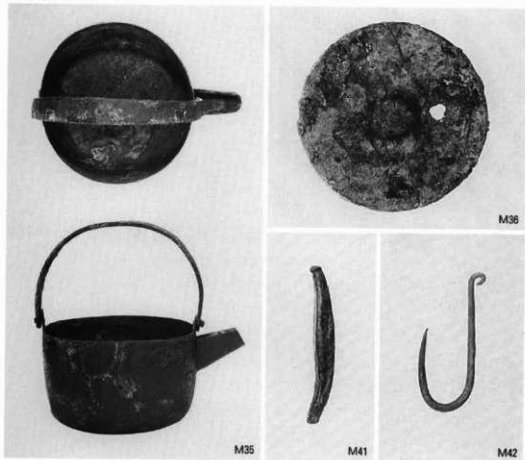
嗅ぎ煙草入れ、刀装具、釣手



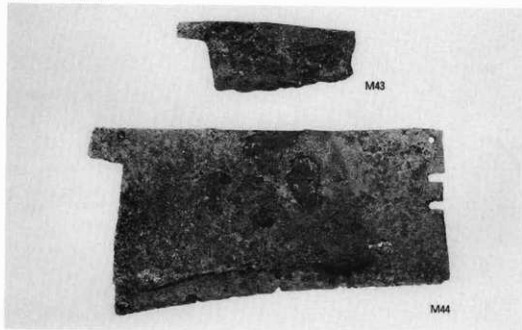
金 具



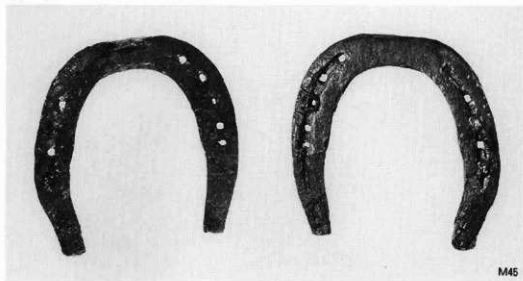
油差し、蓋



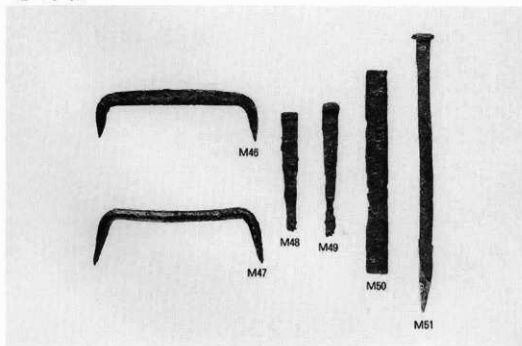
包丁・その他



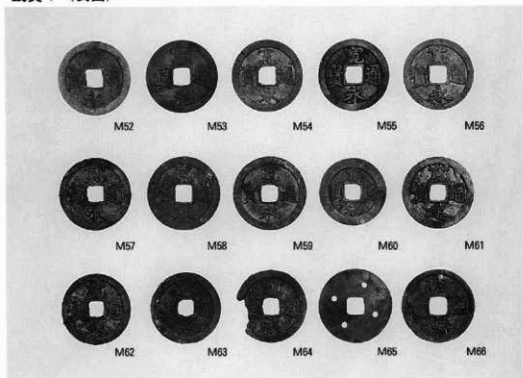
蹄鉄



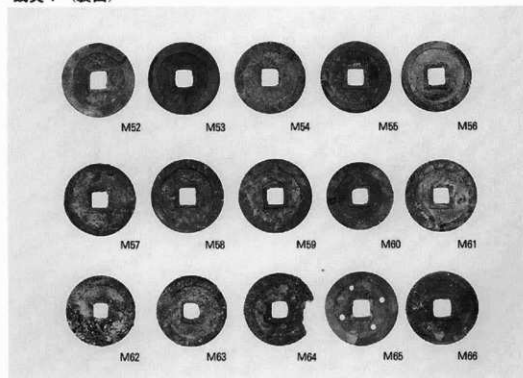
鋸・釘他



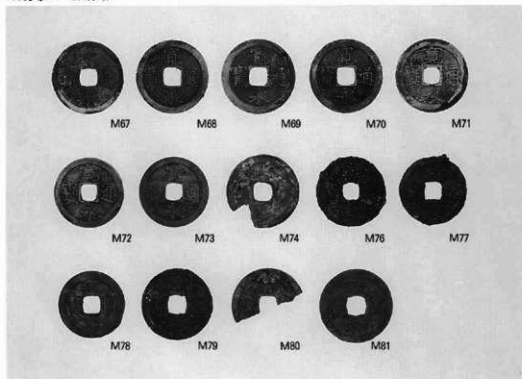
銭貨 1 (表面)



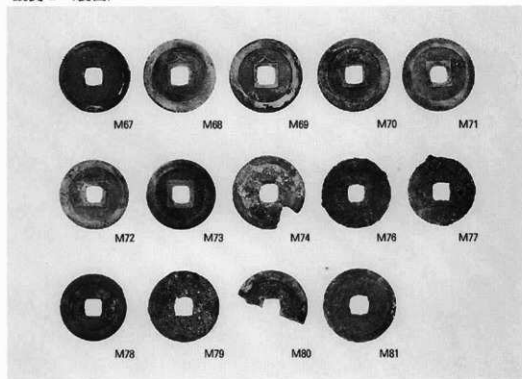
銭貨 1 (裏面)



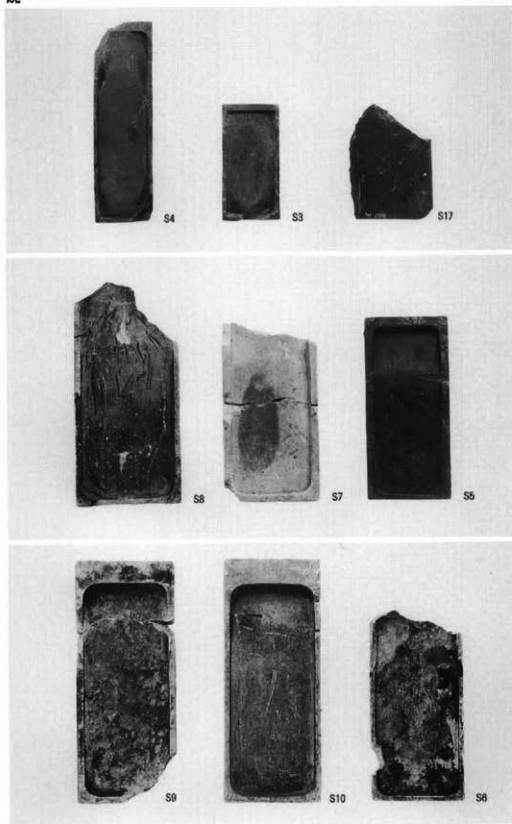
銭貨 2 (表面)



銭貨 2 (裏面)



硯



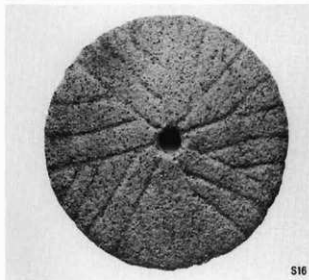
石臼・砥石



S12



S13



S15

S16

S14

兵庫県文化財調査報告 第109冊

明石市

あかしじょうぶげやしきあと
明石城武家屋敷跡

—山陽電鉄道統立体交差事業に伴う発掘調査報告書—

平成4年3月31日 発行

編集 兵庫県教育委員会埋蔵文化財調査事務所
〒652 神戸市兵庫区荒田町2-1-5
発行 兵庫県教育委員会
神戸市中央区下山手通5-10-1
印刷 福田印刷工業株式会社
〒658 神戸市東灘区魚崎西町4-6-3
