



1, 2トレンチ (南から)



2, 4トレンチ (西から)



4, 1トレンチ南半部 (南から)



1. 3トレンチ (北から)



2. 2トレンチ (北から)



3. 4トレンチ (北から)



4. 4トレンチ (南から)



1. 1トレンチ (北から)



2. 5トレンチ (東から)



3. 5トレンチ北壁地層断面

西中ノ町地区

図版 23



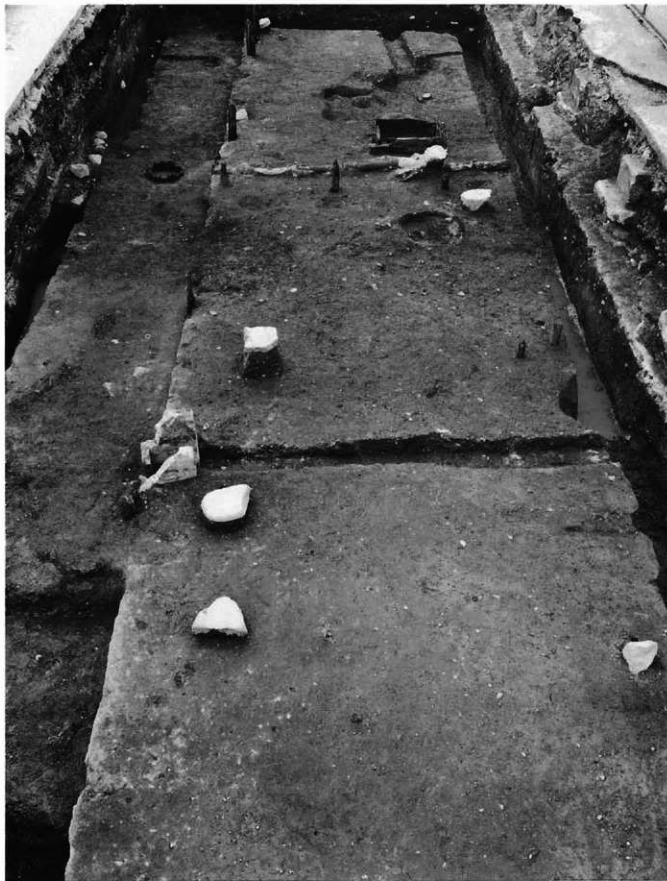
1. 西中ノ町地区全景  
(東から)



2. 西中ノ町地区全景  
(西から)



3. 西中ノ町地区から  
西外堀・明石川方面を望む



西中ノ町1区上層遺構面（東から）



西中ノ町1区下層遺構断面全景（東から）



1. SD3501 (屋敷境溝)  
2. SD3501 (埋土断面)

1. SK2503



2. SK2503



3. SK2502

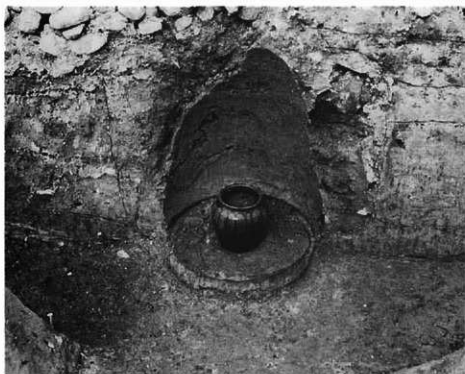




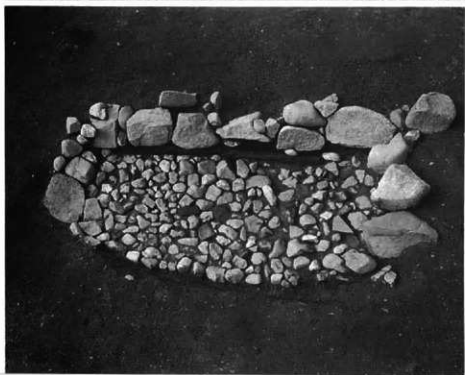
1. SK2504 (水琴窟)

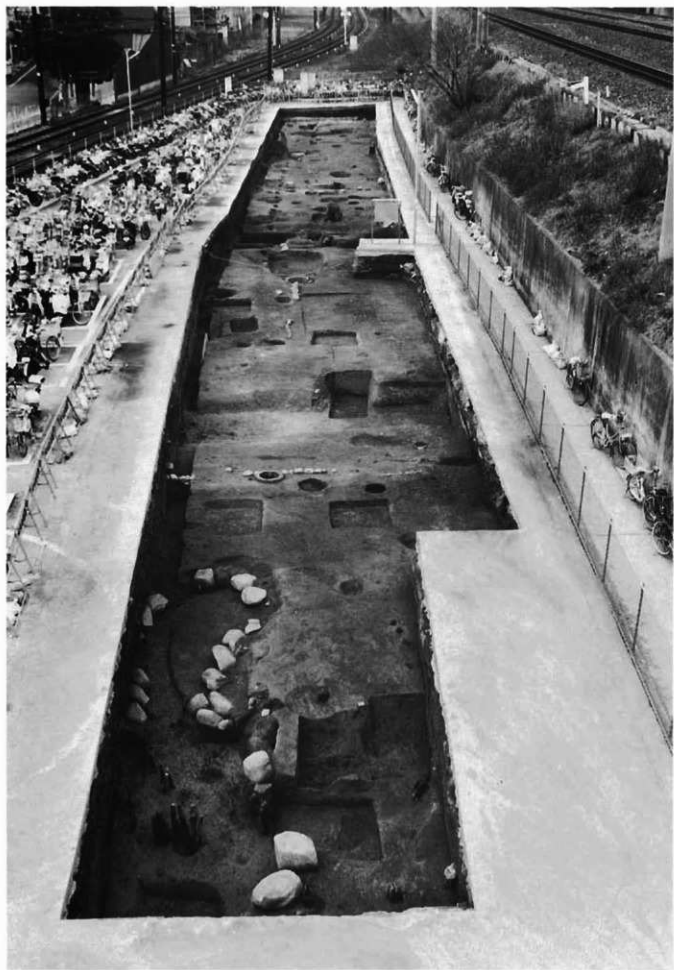


2. SK2504



3. SG3601 池状遺構

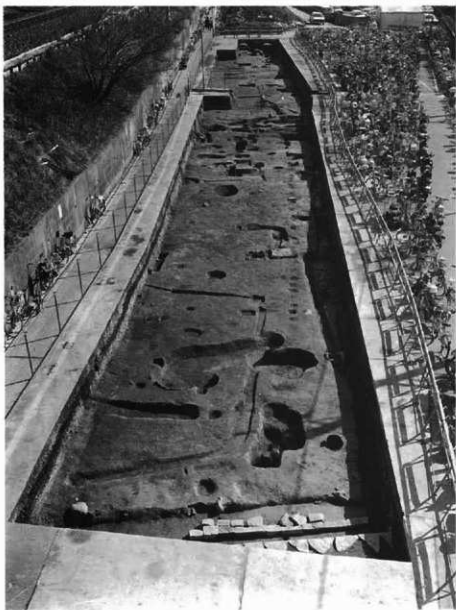




西中ノ町2、3区全景（東から）



1. 西中ノ町から東方を望む



2. 西中ノ町2、3区全景（西から）

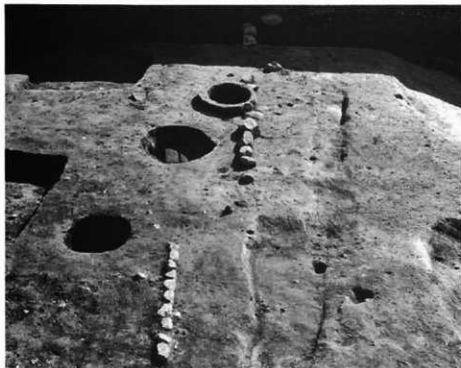
1. 西中ノ町2区 (東から)



2. SD2501 (屋敷境溝)



3. SA2501 (築地跡)



1. SB2503 (石列)



2. SG2501 (池)





1. 円形土坑群 (西から)

2. 円形土坑群 (北から)

SK3506, 3518, 3533, 3534, 3536



1. SK3608



2. SK3628とSD3606

1. SD2503 (道路側溝) 上層



2. SD2503 (道路側溝) 下層



3. SD3603







1. SD2503 の石組



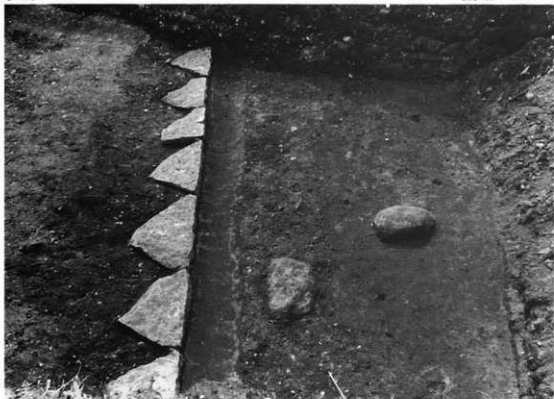
2. SD2503 の石組



1. SD2503・SD3503 断面



2. SD3503



1. SF2501 と SD2504 上層

2. SD2504 下層



1. 東外堀跡断面（西から）



2. 東中ノ町地区  
Cトレンチで検出された  
石組遺構 (SG2002)



3. 岡 石組溝 (SD2012)



1. 東中ノ町地区  
Aトレンチ南壁断面



2. 東中ノ町地区  
Aトレンチ南壁断面



3. 東中ノ町地区  
Aトレンチ南壁断面



1. 東中ノ町地区 2トレンチの道路跡  
(SF2001)



2. 西外堀の落ち込み



3. 西外堀の土留め

# 遺物図版

SD2002





SD2002



9



32



39



27



31



28



29



30

SD2002



SD2002



SD2002



89



90



83



87

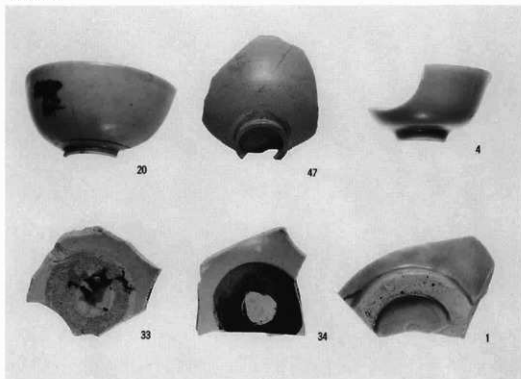


101

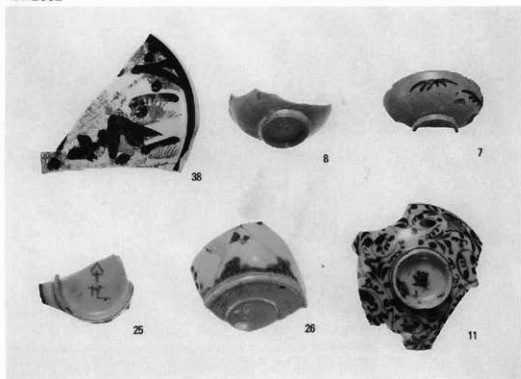


83

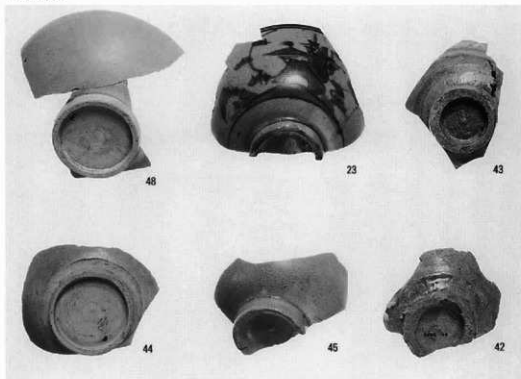
## SD2002



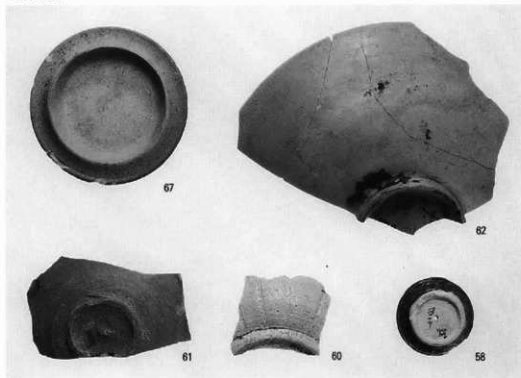
## SD2002



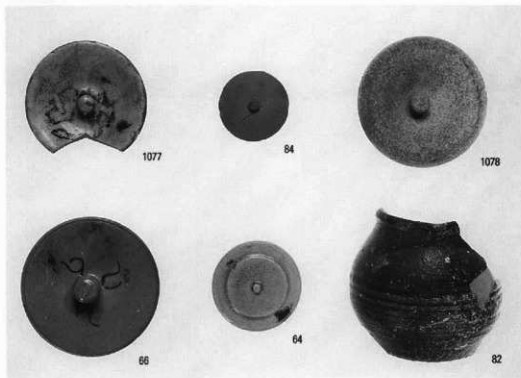
## SD2002



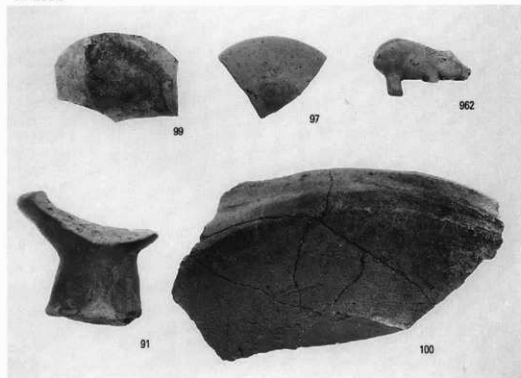
## SD2002



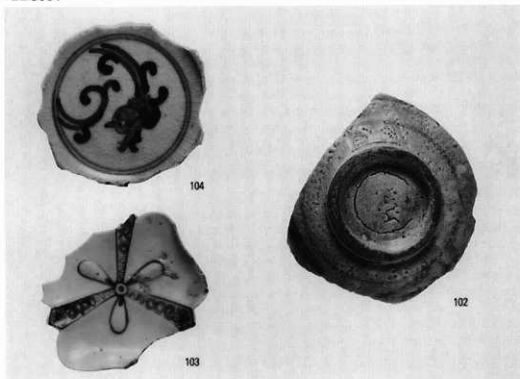
## SD2002



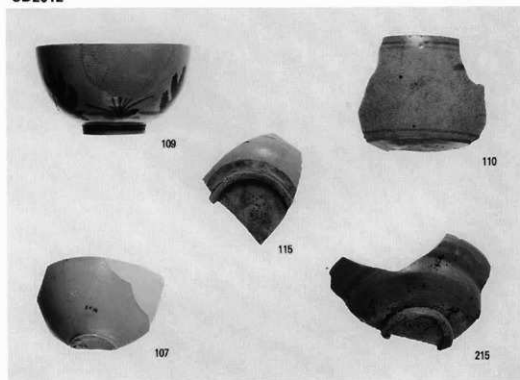
## SD2002



## SD3001

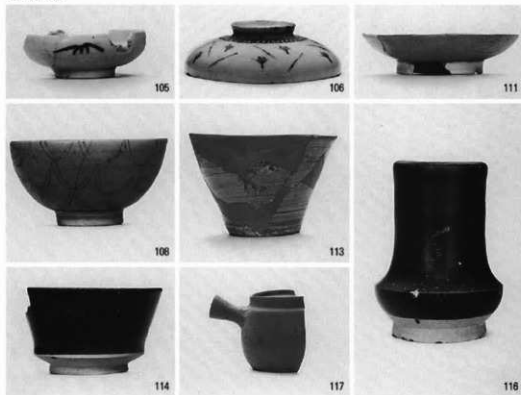


## SD2012





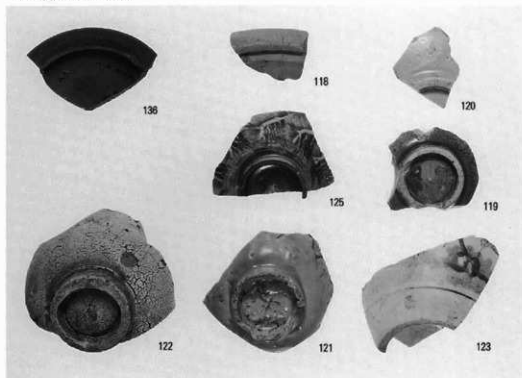
## SD2012



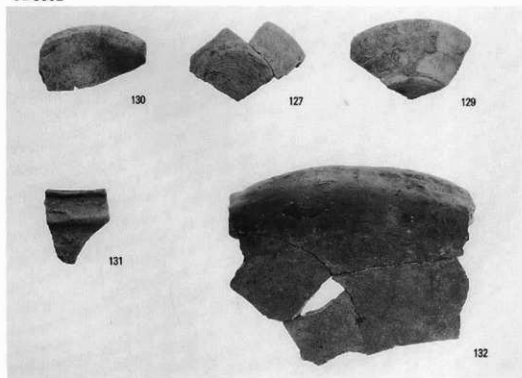
## SD2001 · SD2003 · SD3004



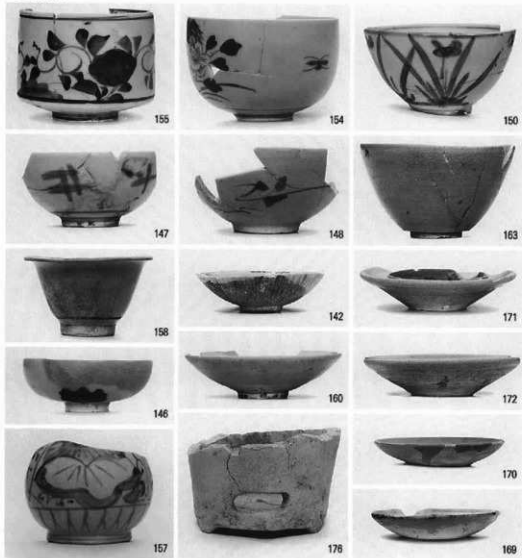
## SD2003 · SD3002



## SD3002



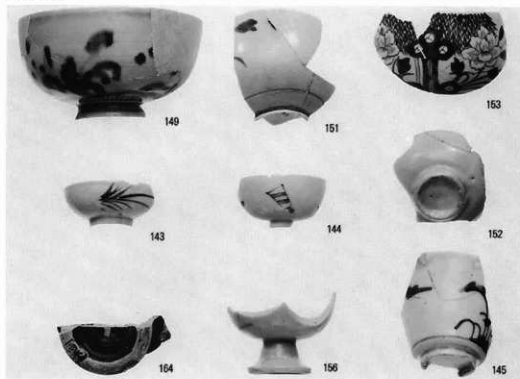
## SD2013



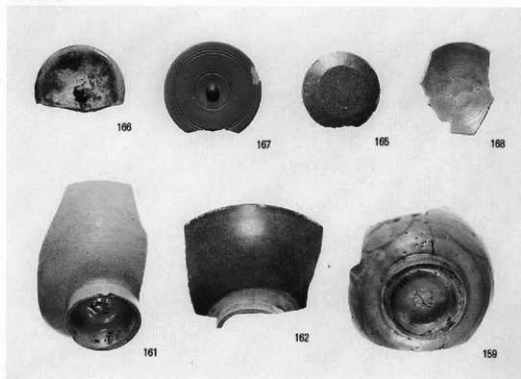
## SD2002



## SD2013



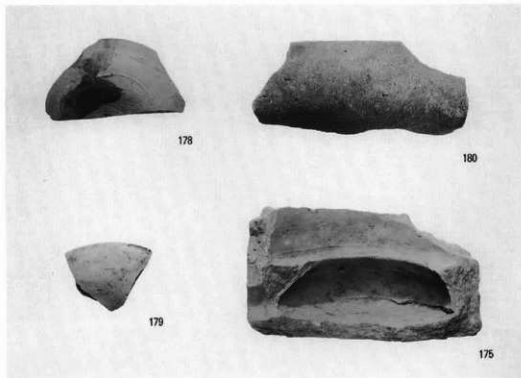
## SD2013



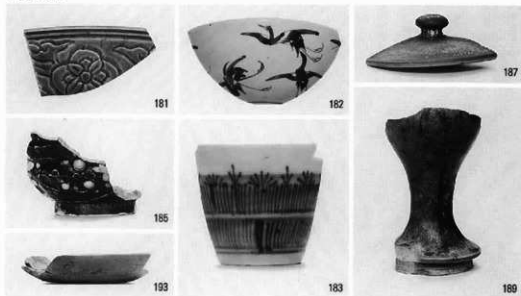
SD2013



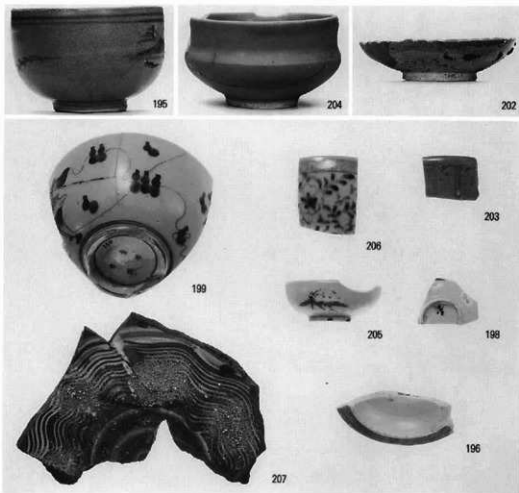
SD2013



## SD3011



## SE3001



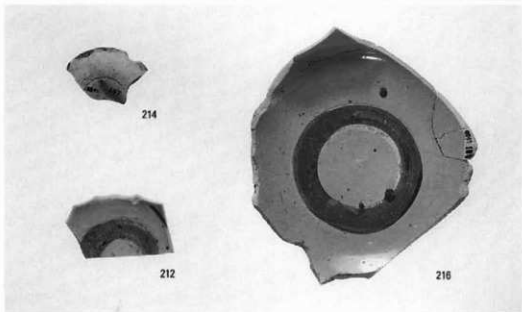
SG2002



213



217

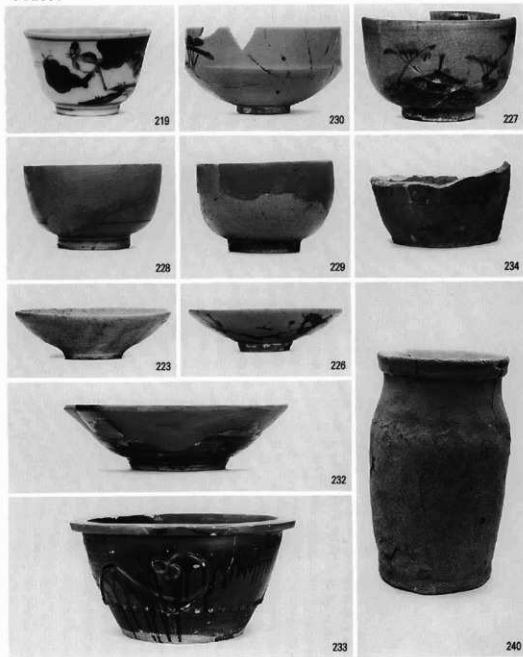


214

212

216

## SG2001

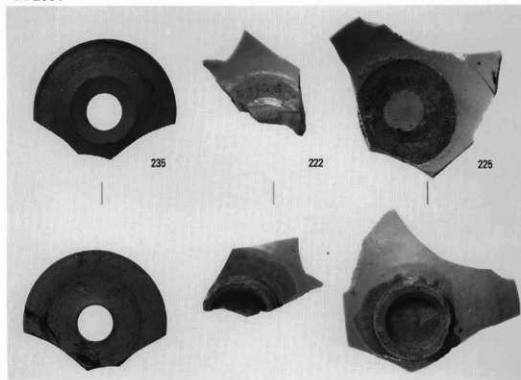




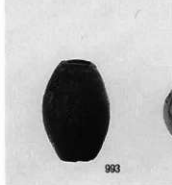
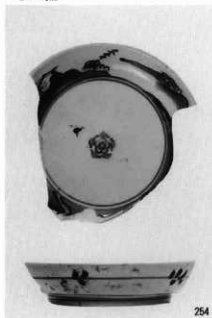
SG2001



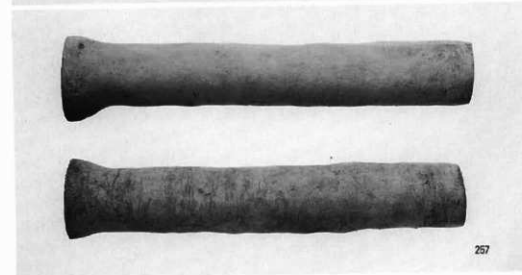
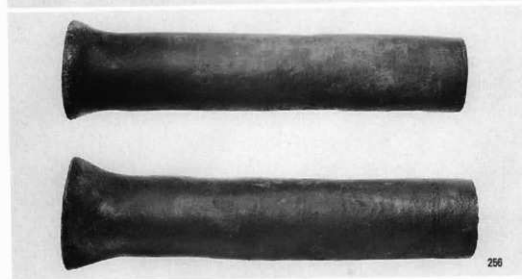
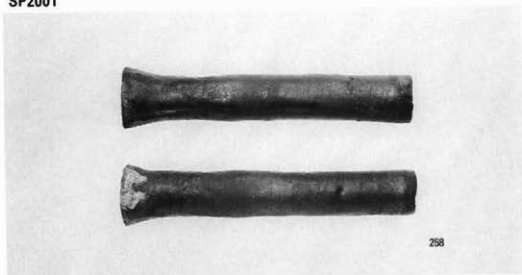
SG2001



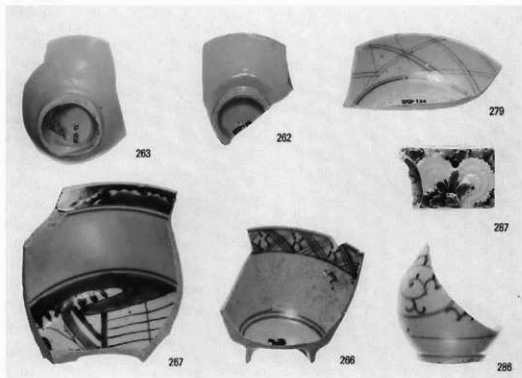
その他



SP2001



SD3101



SD3101



SD3101



271



276



275



285



280



270



281



282



284



288

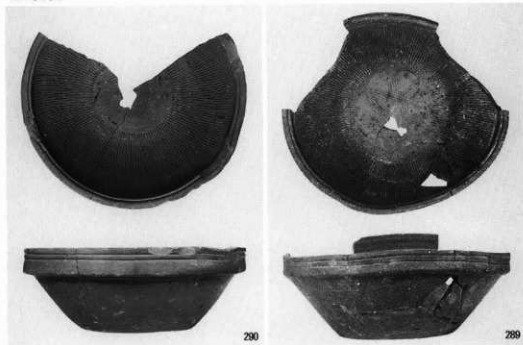


283

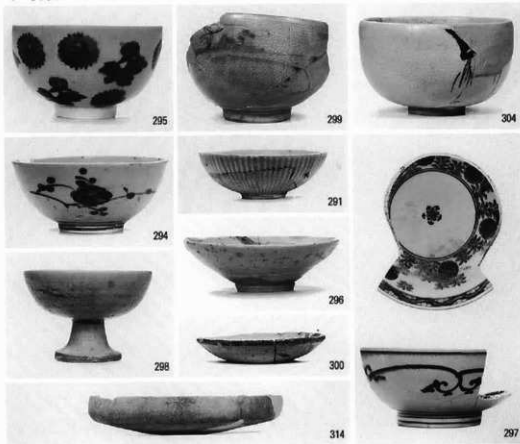


288

## SD3101



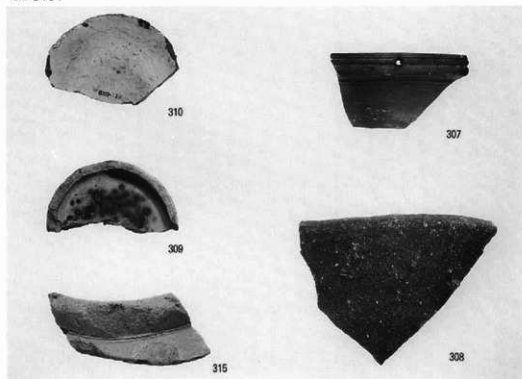
## SD3101



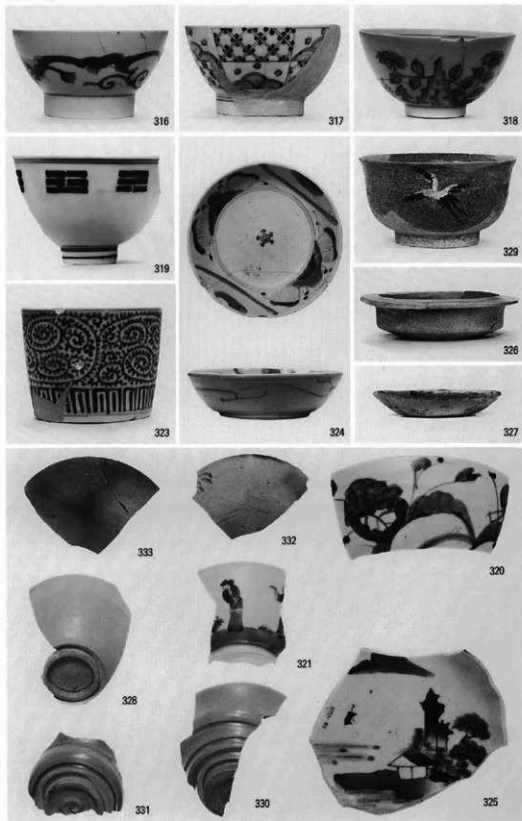
## SD3101



## SD3101

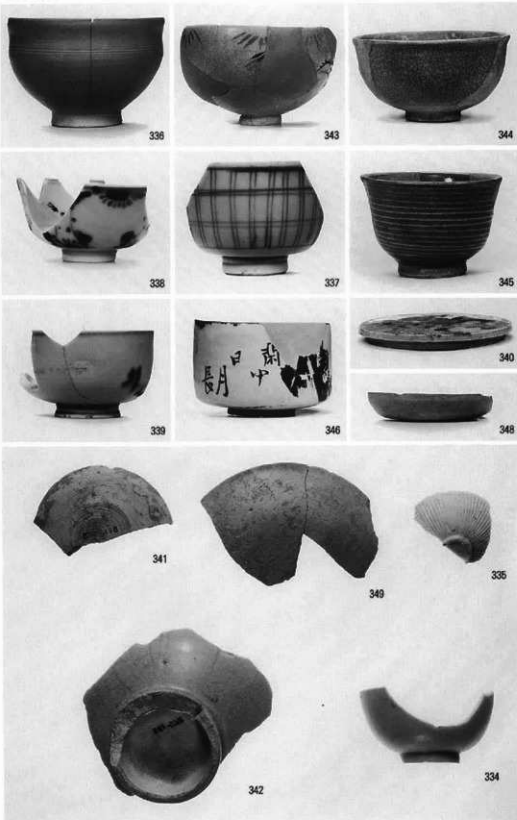


SD2102





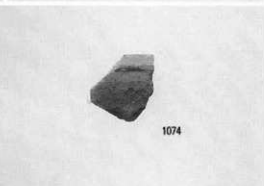
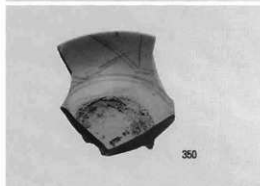
SD2101



SD2002 SD2101



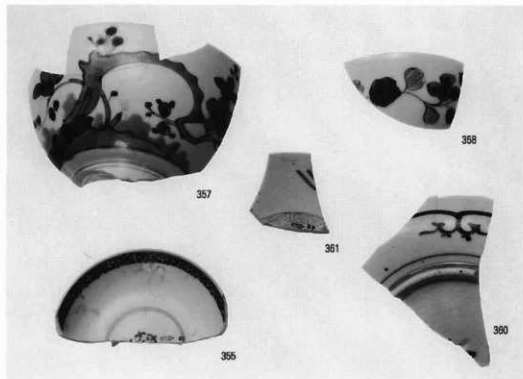
SE2101



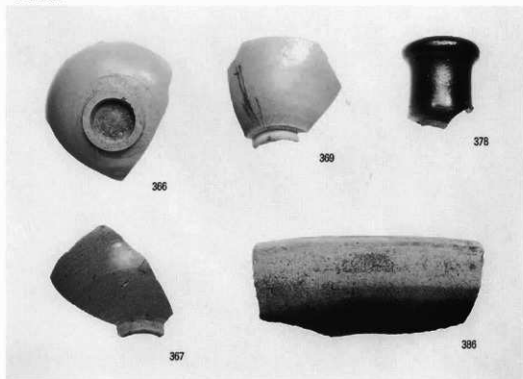
SE2102



## SE2102



## SE2102



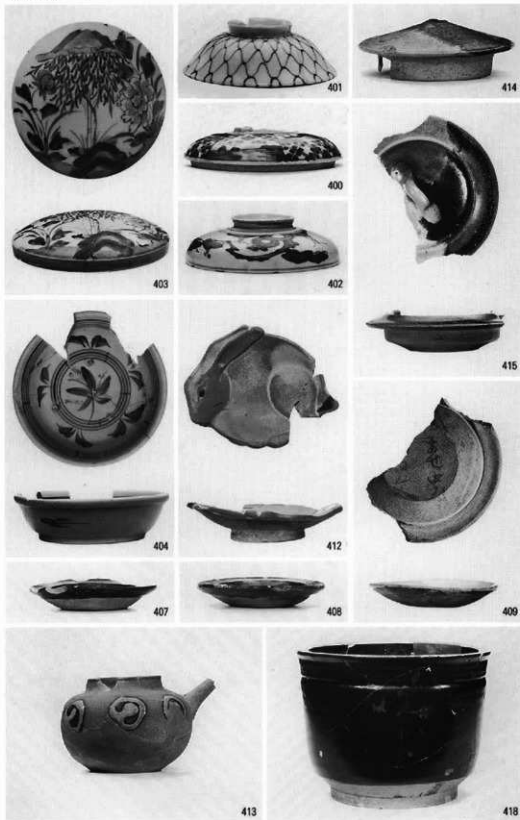
SE2102



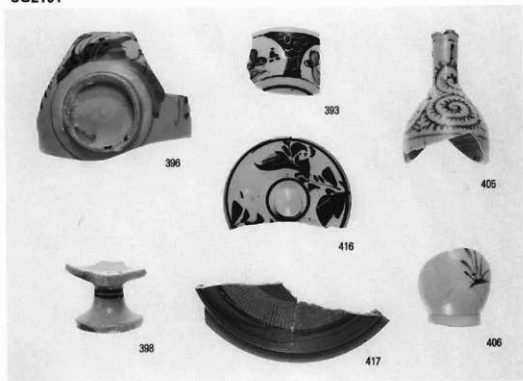
SG2101



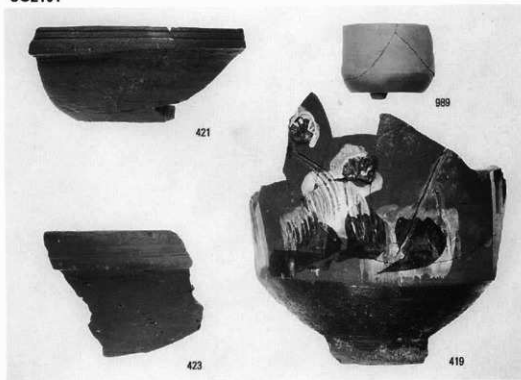
SG2101



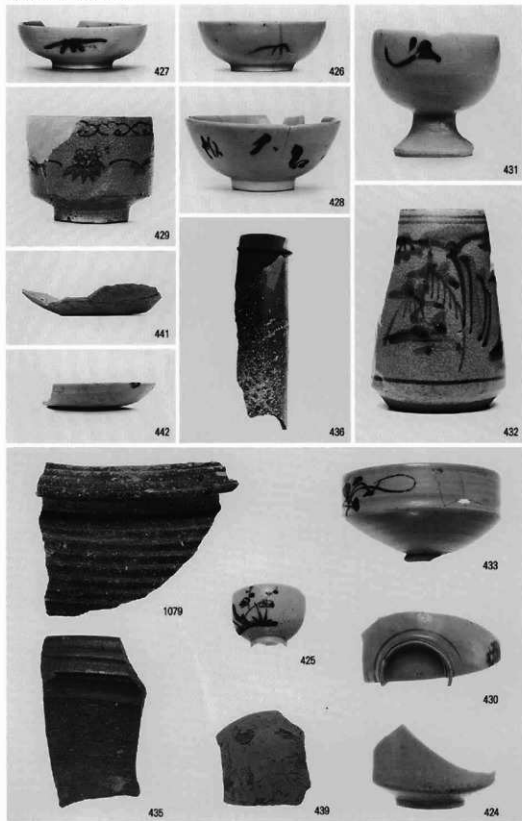
SG2101



SG2101



SK1024 SK2124





SK2124



SK2159



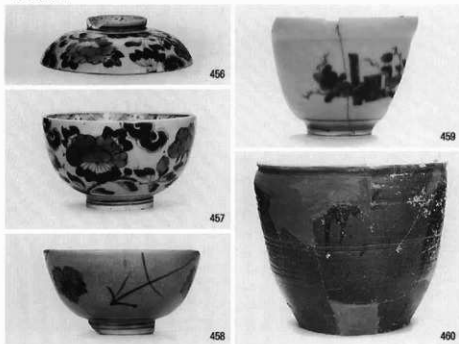
SK2179



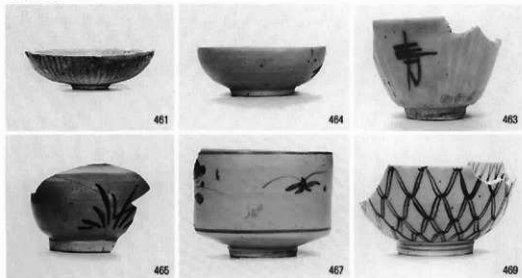
SD2201



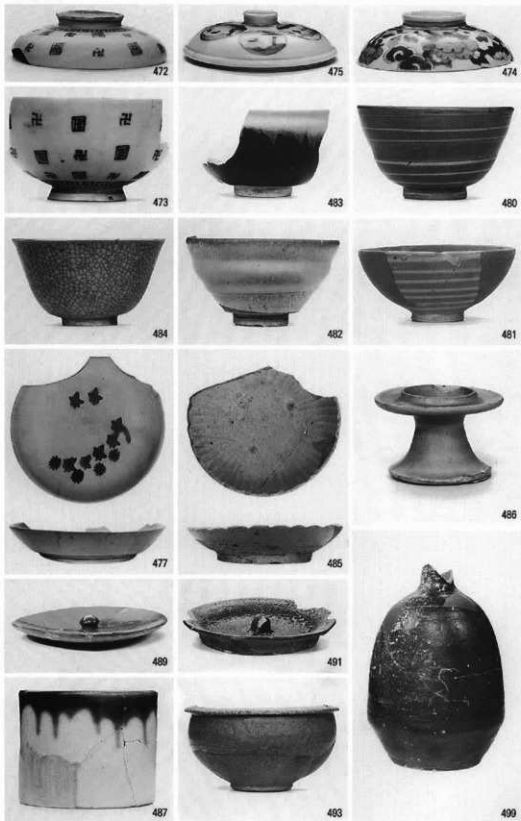
SD3201



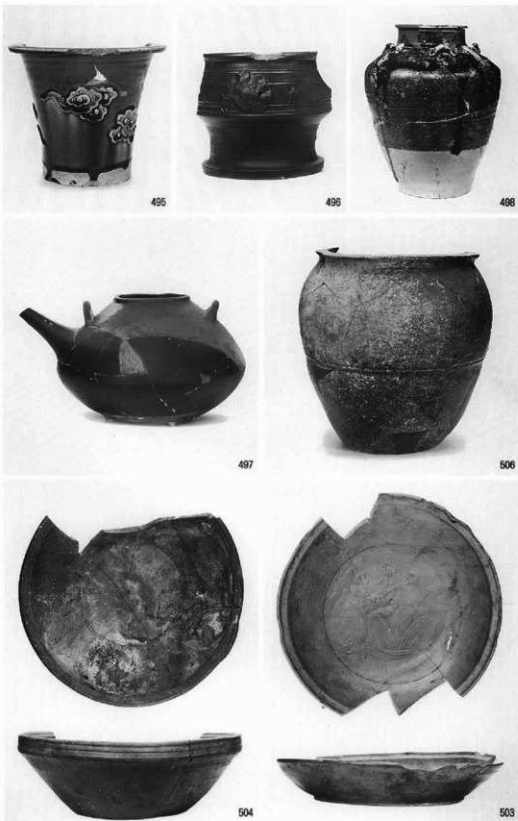
SD3202



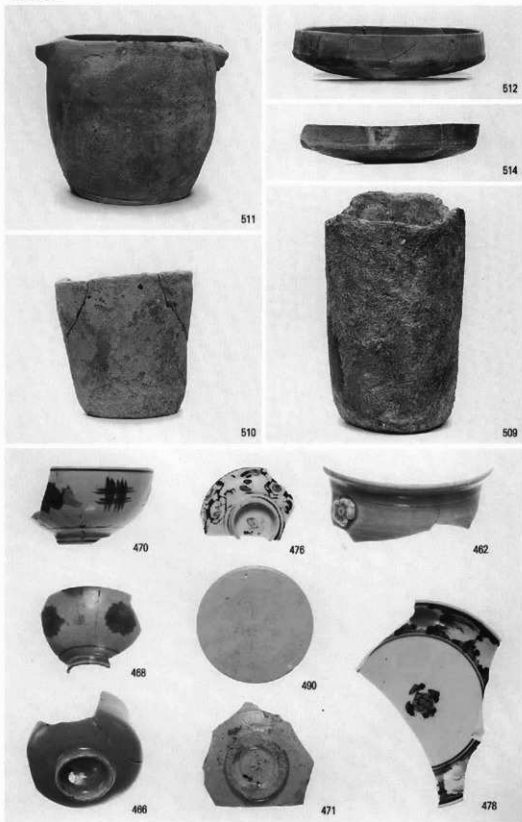
SD3202



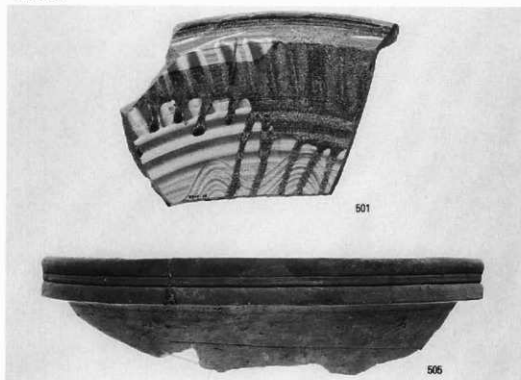
SD3202



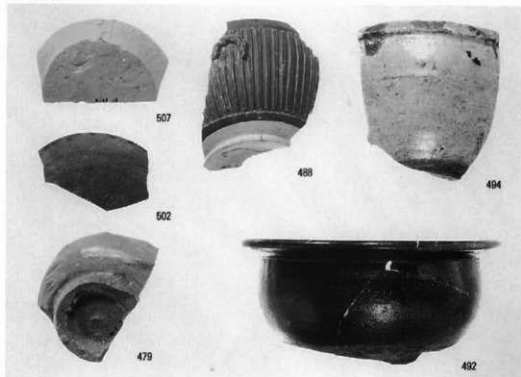
SD3202



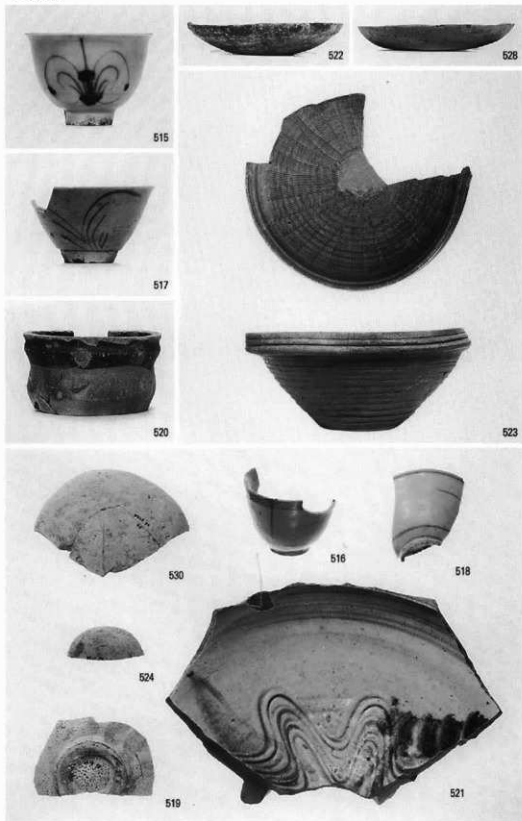
SD3202



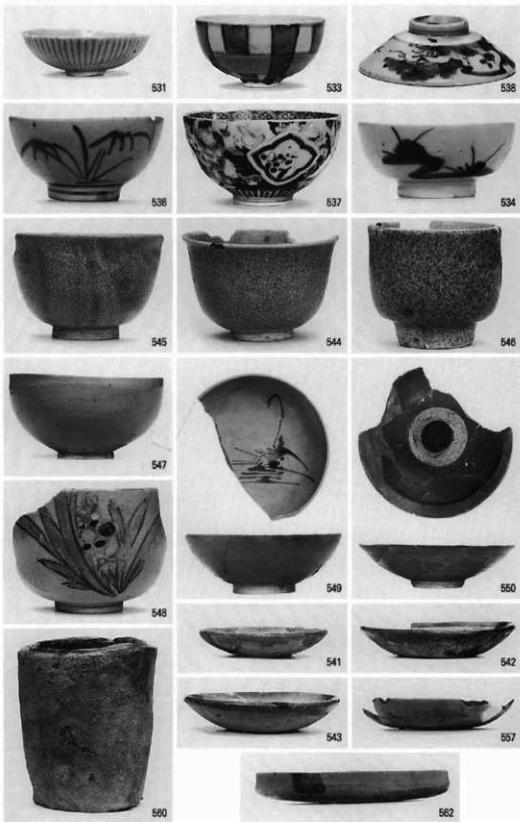
SD3202



SK3208

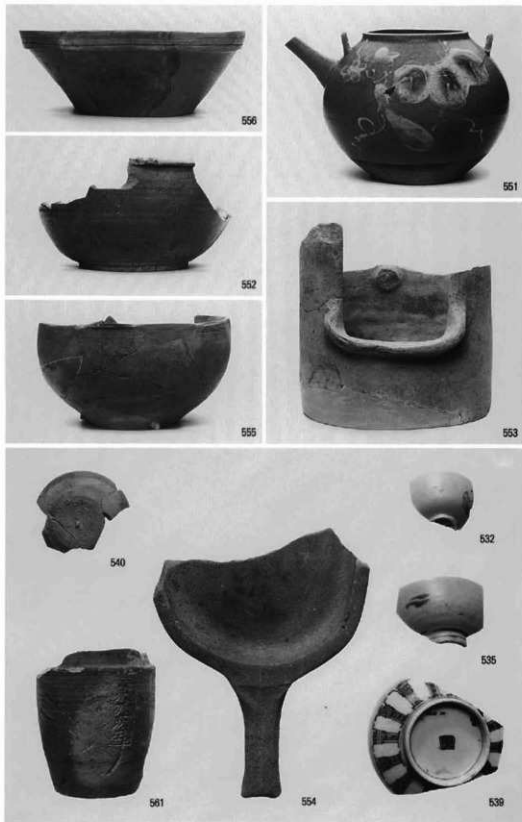


SG3201





SG3201



SX3202



563



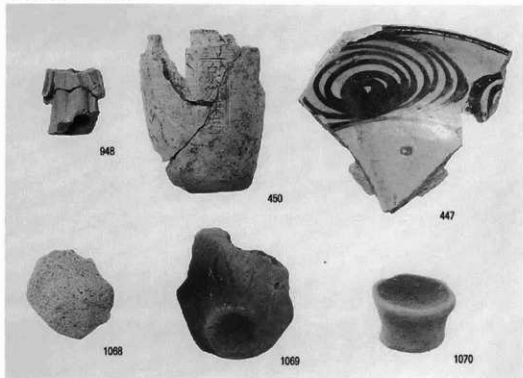
564

SK3201



565

SK2159 · SK2148



948

450

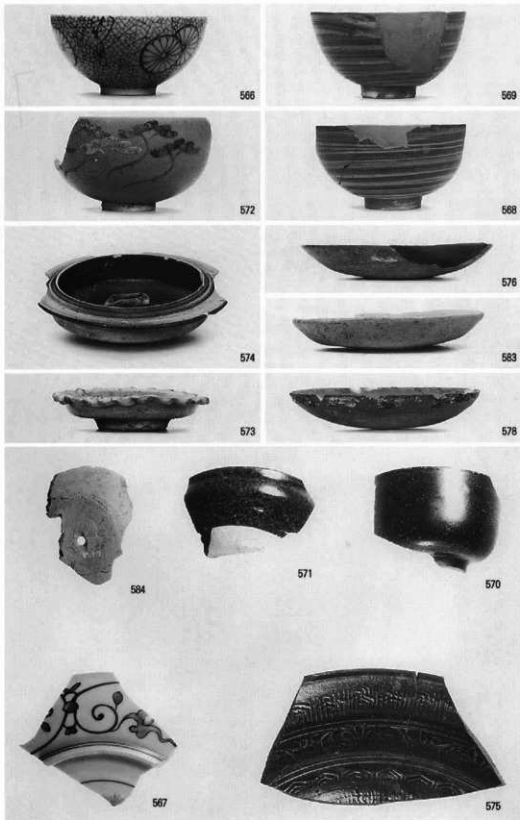
447

1088

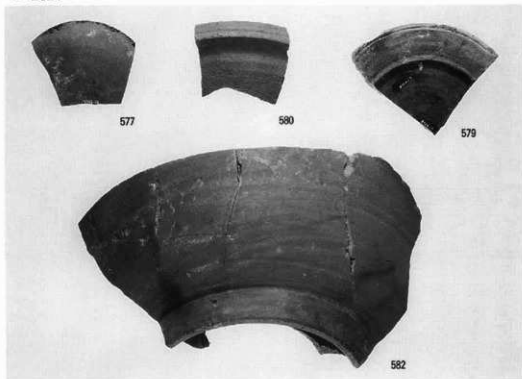
1069

1070

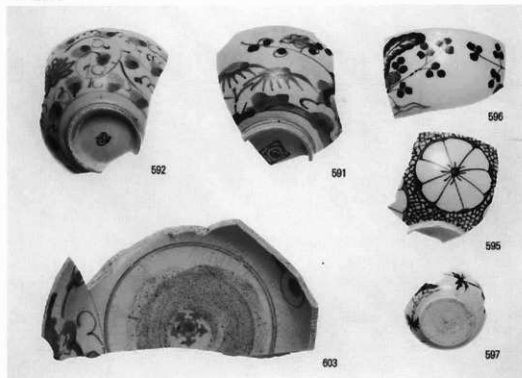
SD2321



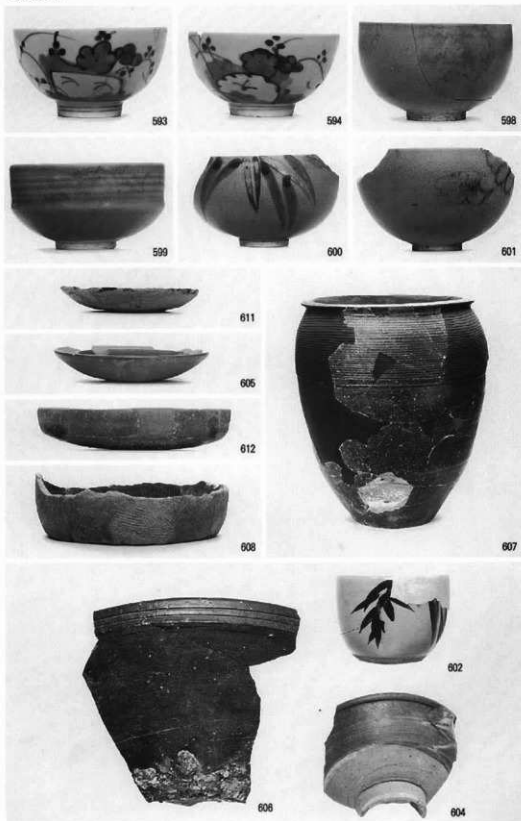
## SD2321



## SD2310



SD2310



SD2305



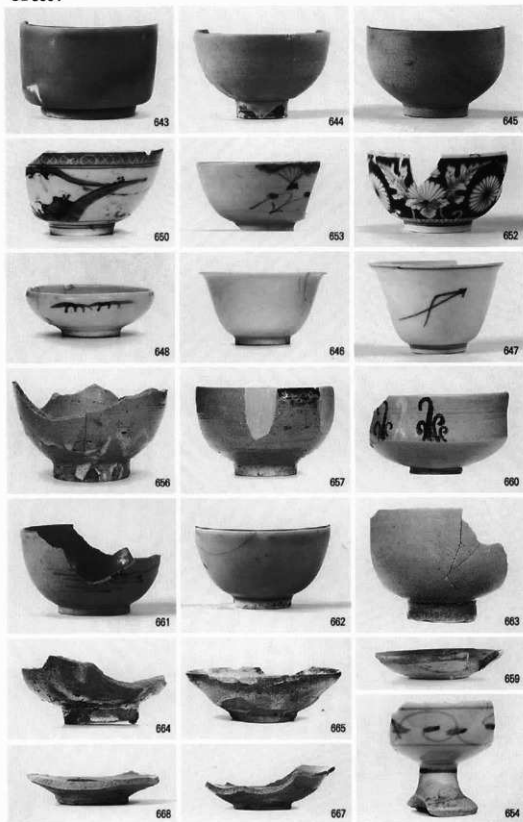
SD2404



SK2417



## SD3501



SD3501





SD3501



678



677



679



690



681



682



685



686



687



688



690



691



692



693

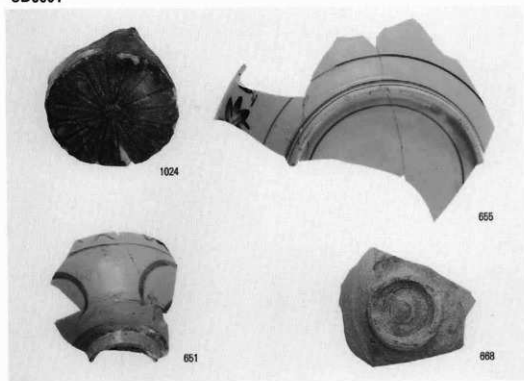


694

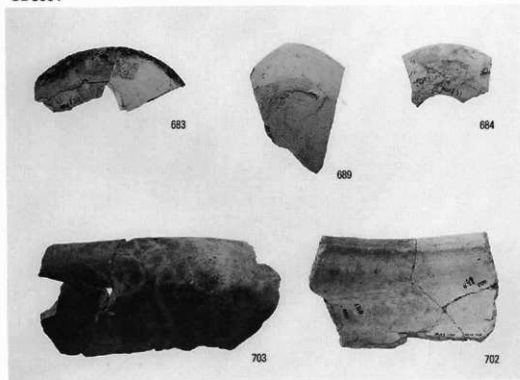


695

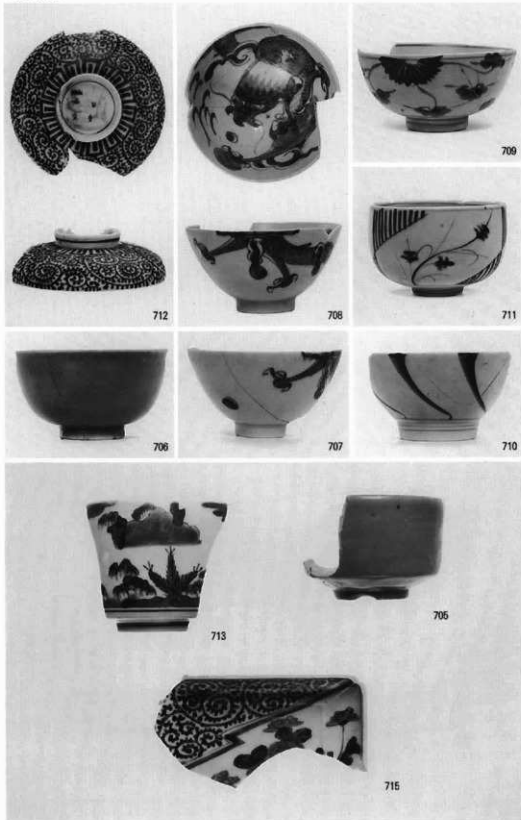
## SD3501



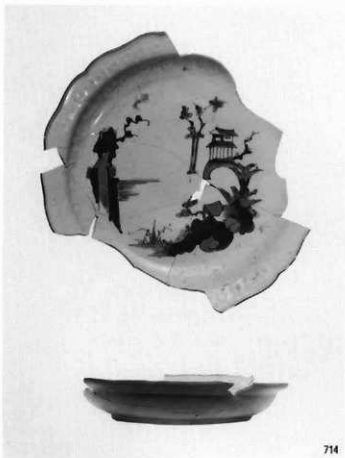
## SD3501



## SD2501



SD01 SD2501



714



716



717



718



719

SD2502



SG3501



SK2503



## SK2501



SK2502



S2502



804



805



807



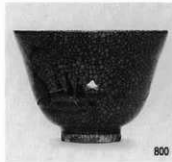
795



797



799



800



803



802



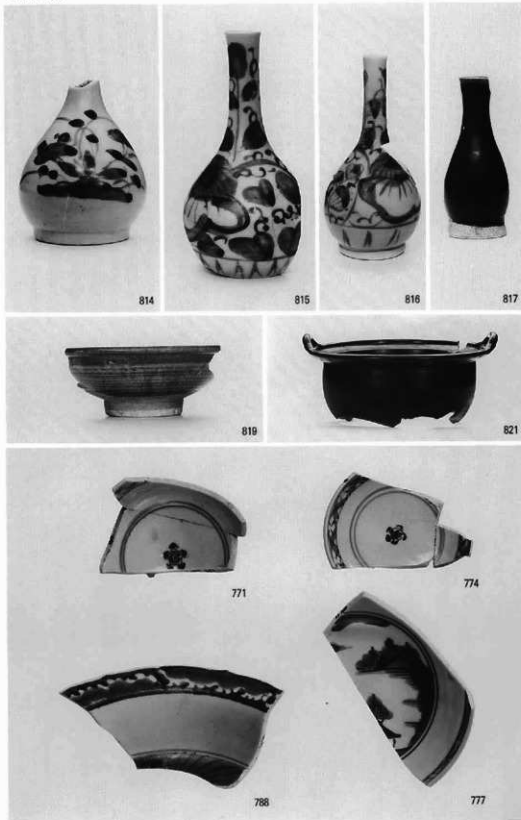
812



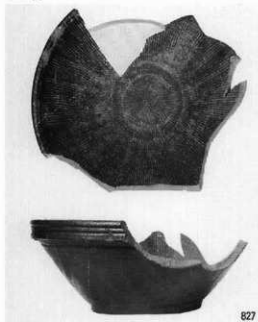
813



SK2502



土壇1 SK2502



827



828



826



818



831



833



835



836



839



848



844

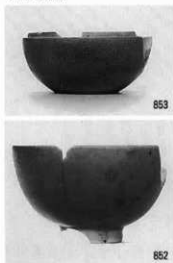


845

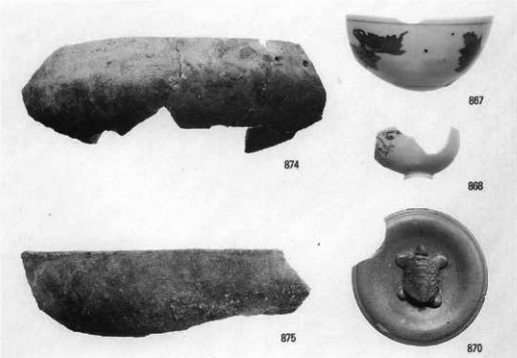
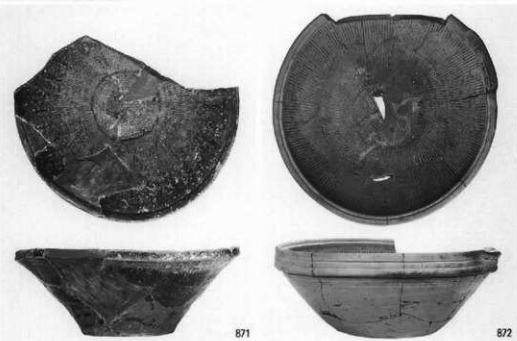
SG2501



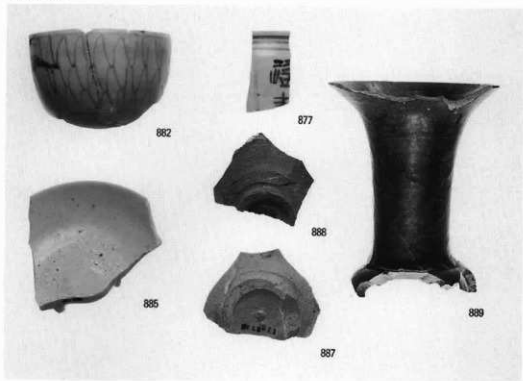
SD2505



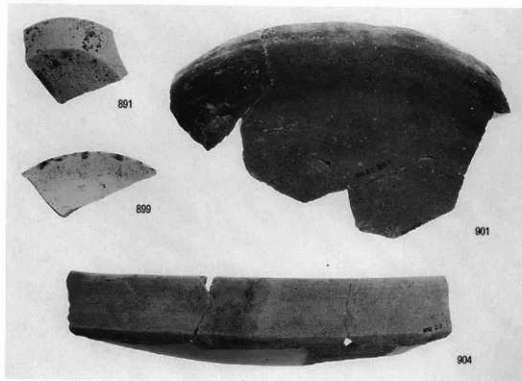
SD3505



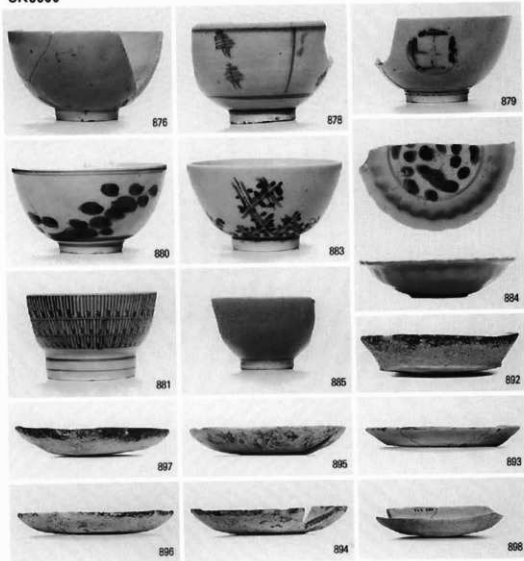
SK3506



SK3506



SK3506



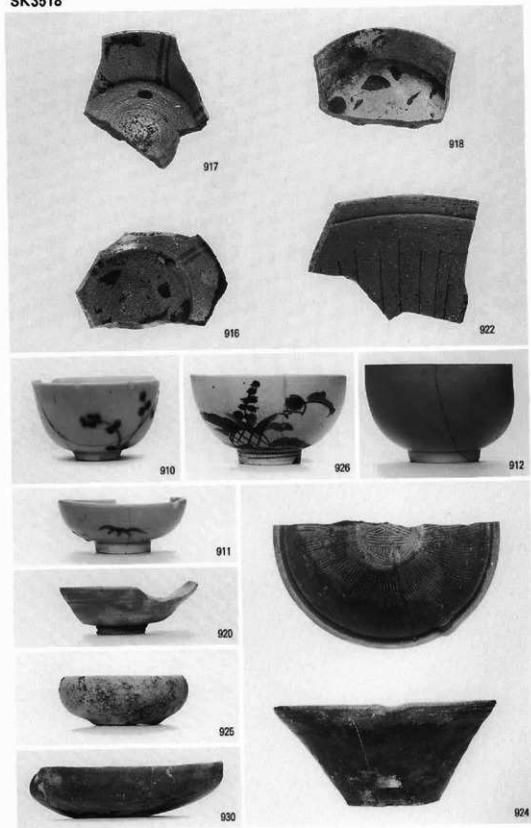
SK3536



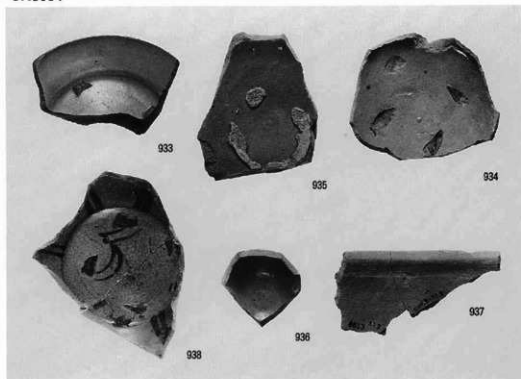
SK3528



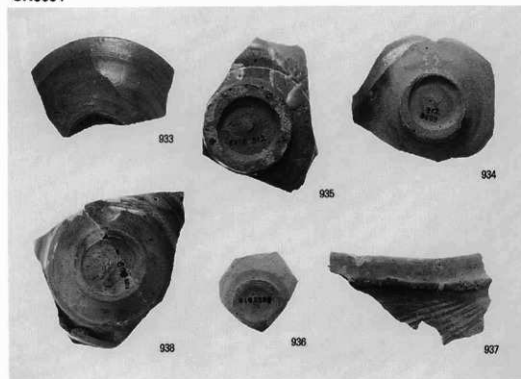
SK3518



SK3534

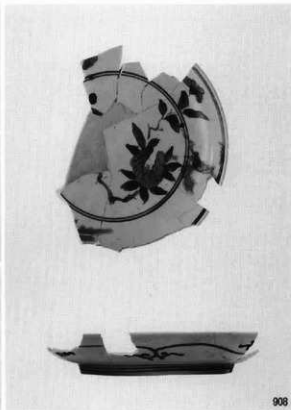


SK3534





SK3508



SK2505



SK2505



945

SK3523



931



944

SK2506



943