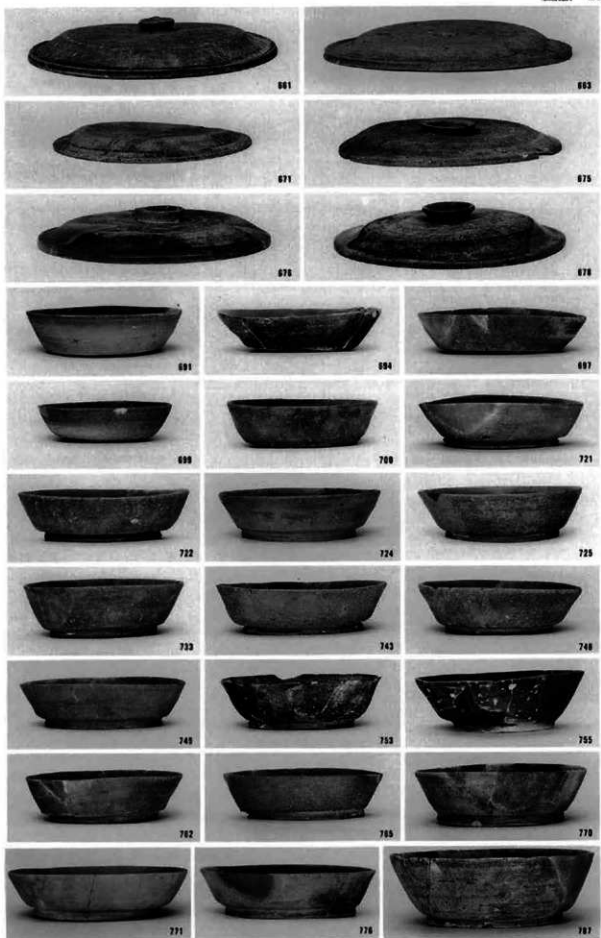
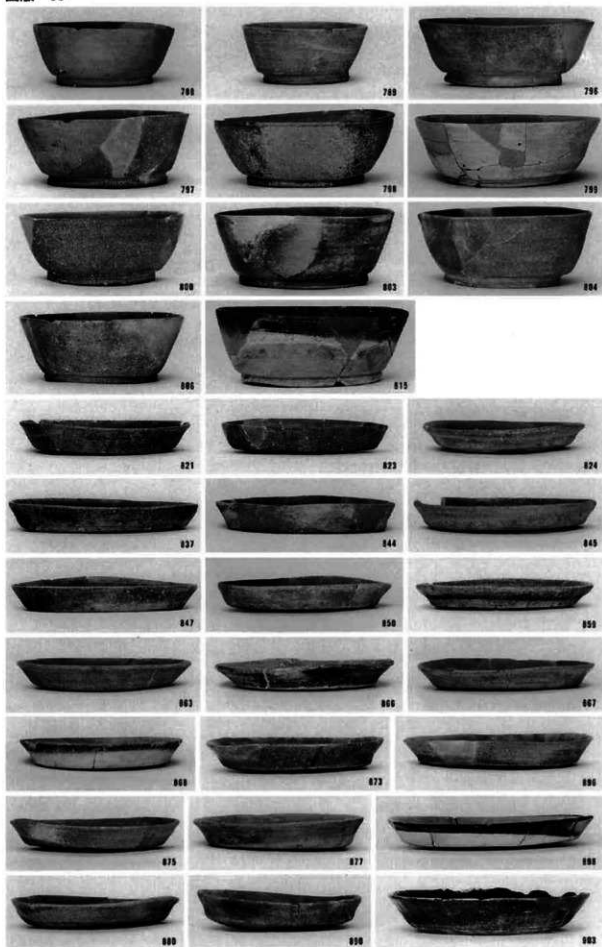


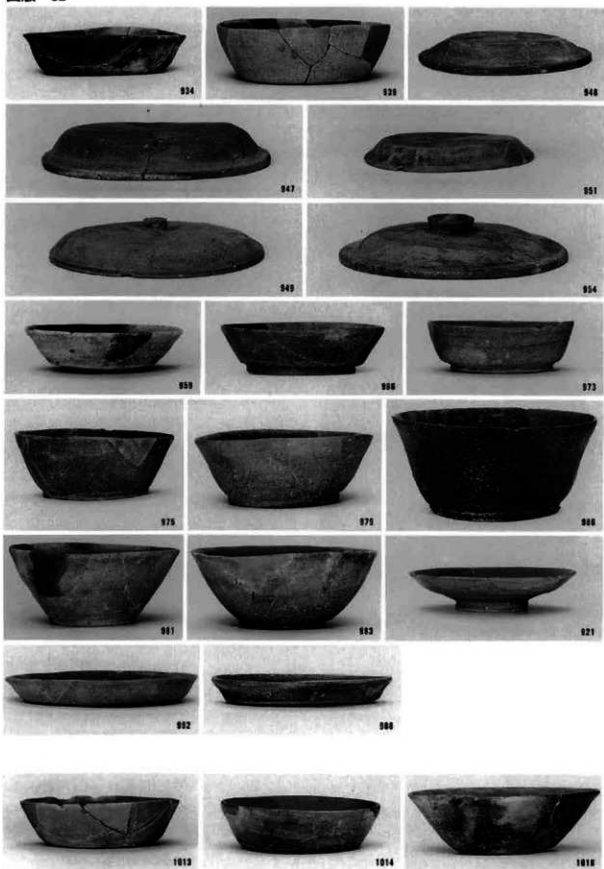
窪地東岸黒灰色シルト出土







窪地東岸黒灰色シルト出土



窪地東岸黒灰色シルト上・灰色シルト下出土



硯 1

硯 2



1037



1038



306



1039



1040



923



419



1041



418



922



924



1042



11

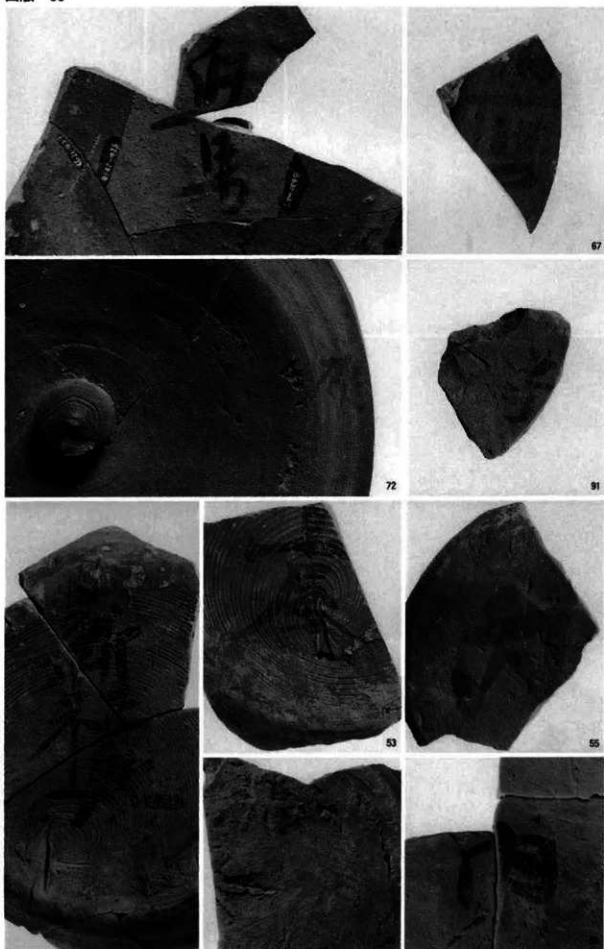


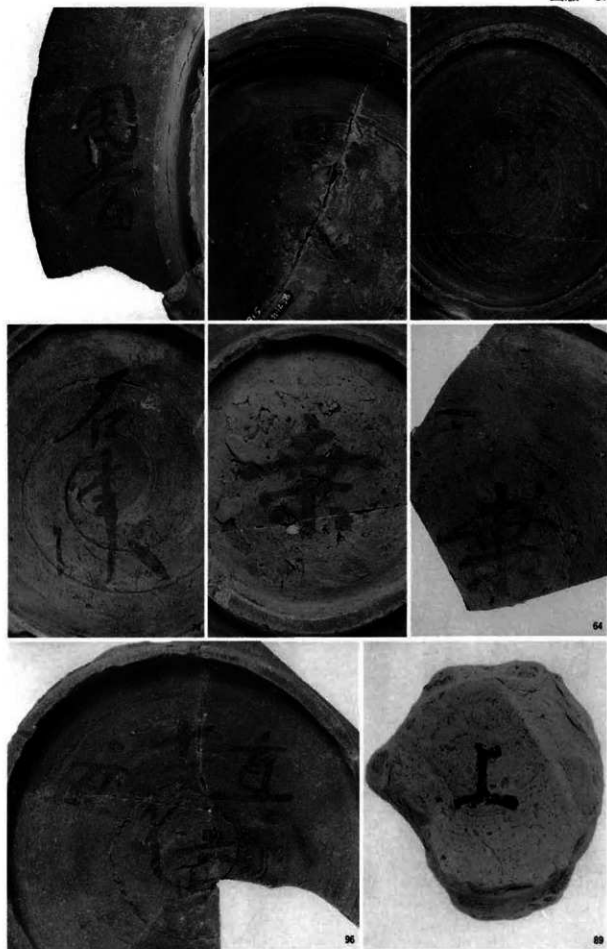
36



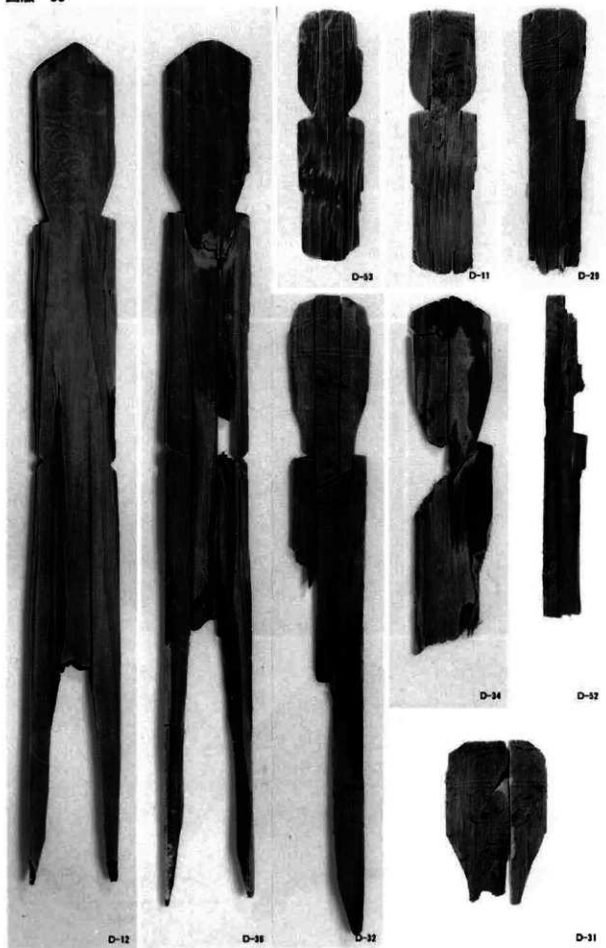


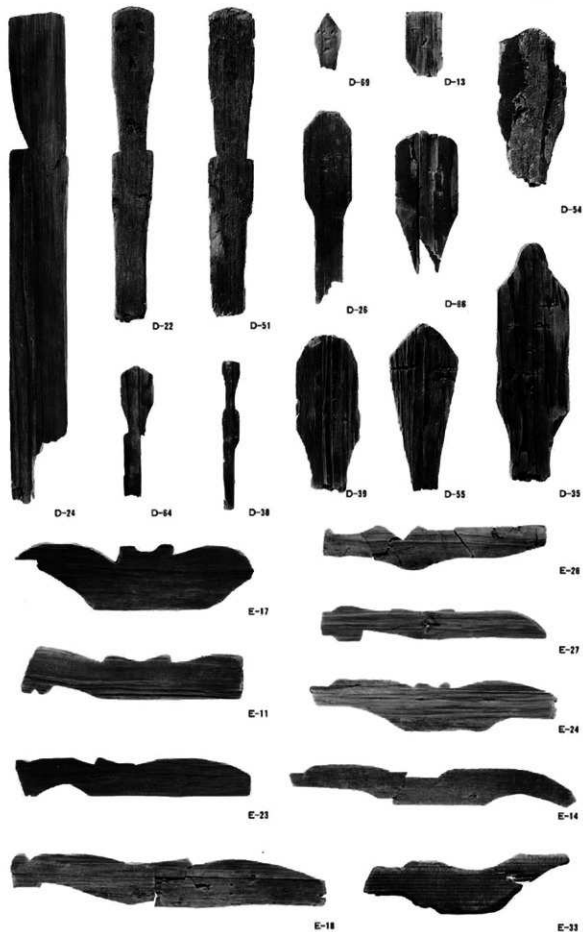






墓地東岸黒灰色シルト・黒灰色シルト上出土







G-6



G-7



G-2



I-314



I-303



I-333



I-405



I-348



I-348



I-301



I-330



I-401



I-35



I-407



H-7



I-302



I-306



I-401



I-409



I-318



I-342



I-385

I-382

I-581

I-588

I-388

I-327

I-324

I-483



I-288

I-612

I-488

I-376

I-388

I-388

I-585

I-47



2:3



P-11 2:3



P-13 2:3



2:3

P-24

1:2

P-25



P-12 2:3

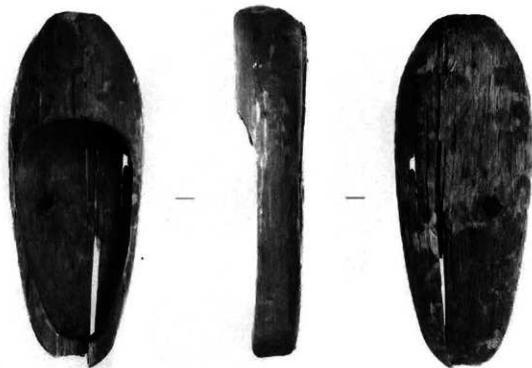
P-4



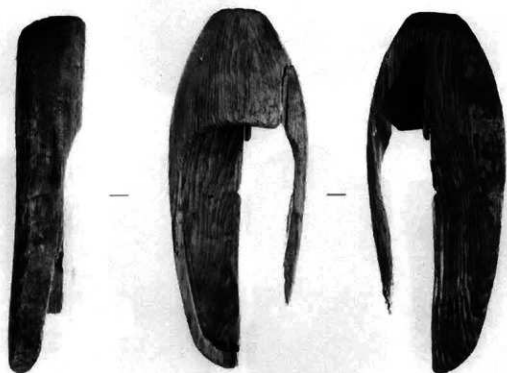
1:3



C-18



C-9



C-12





P-18

C-5



P-16



P-17



P-19



P-23



O-2



K-188



J-518



J-545



K-228



J-548



J-615



J-653



J-582



J-564



K-219



K-78



K-184



K-139



K-79



K-121



K-148



K-120





K-188



K-201



K-221



K-176



K-127



K-188



K-187

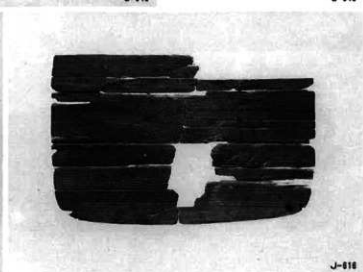
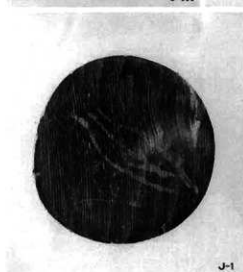
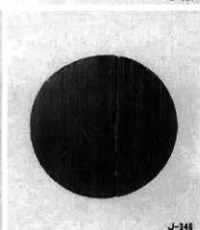
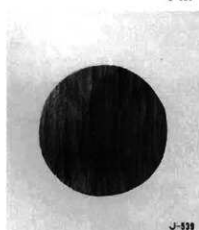
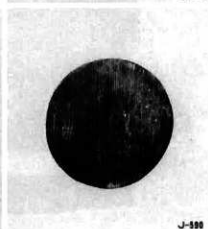
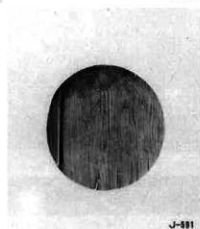
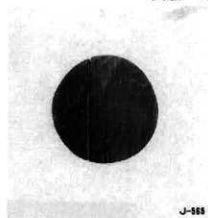
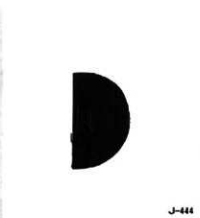
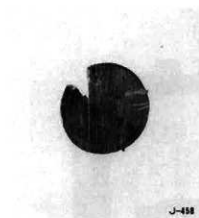
K-200

K-188



K-189

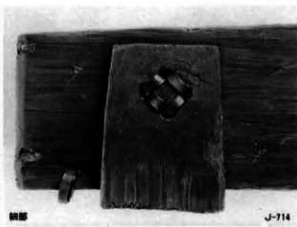
K-190





1:7

J-714



J-715



2:3



L-2



1:2

L-4

1:4

V-1



1:2



N-20 1:3



N-10 1:3



N-21 1:3

N-2



1:3

N-12



1:2



1:2

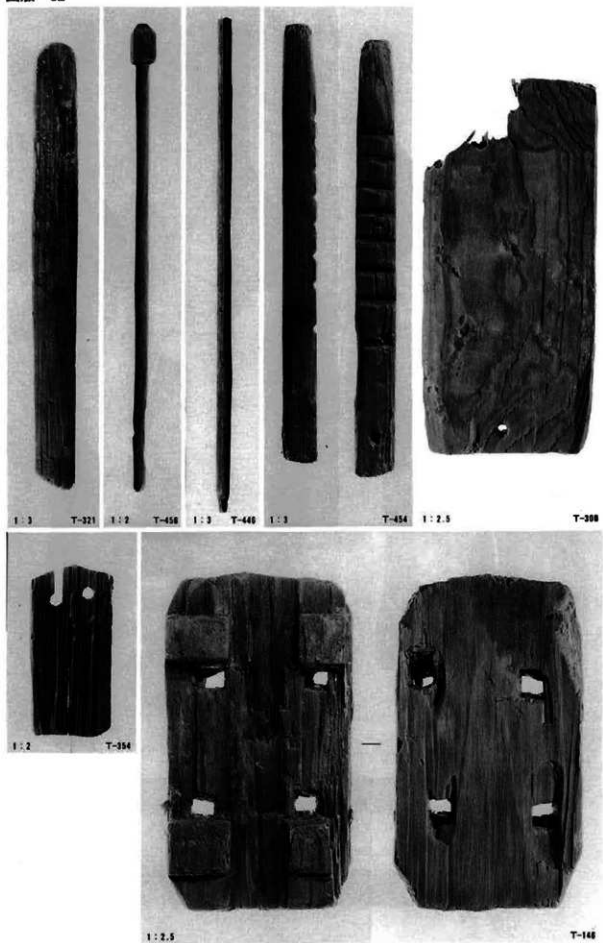


1:2



1:4

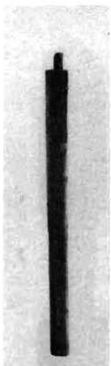






1:1

T-301



1:1

T-445



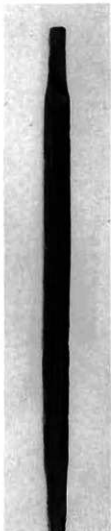
1:1

T-306



1:1

T-447



1:1

T-316



1:1

T-448



1:4

T-449



1:4

T-450



D-23



D-15



D-17



D-4



D-31

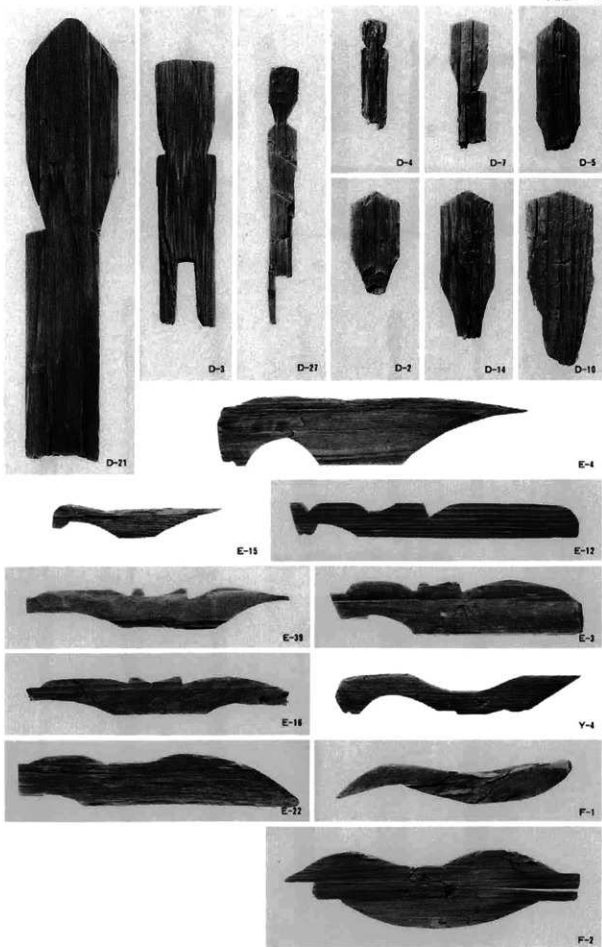


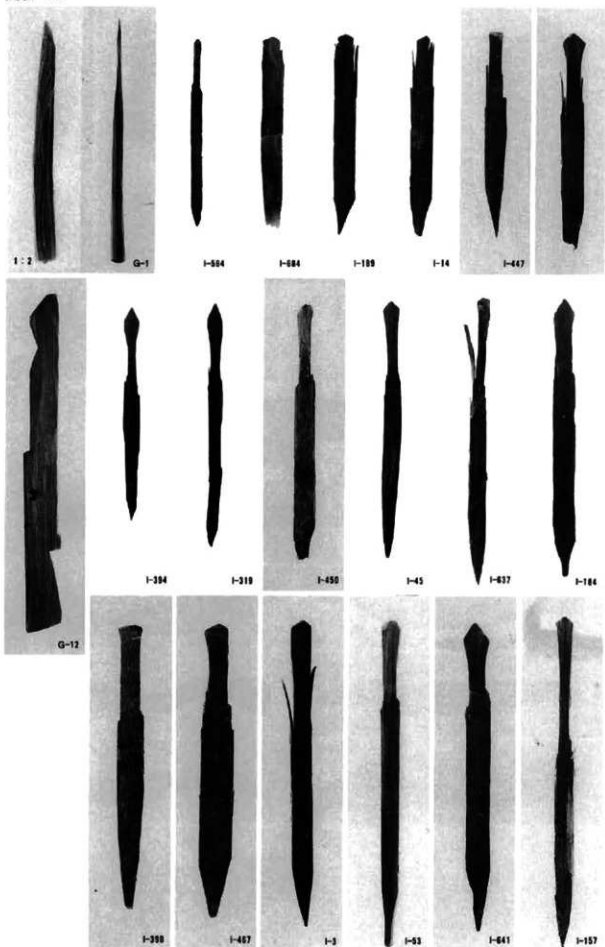
D-1



D-21









I-252



I-465



I-51



I-244



I-714



I-511



I-465



I-681



I-640



I-616



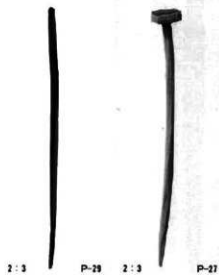
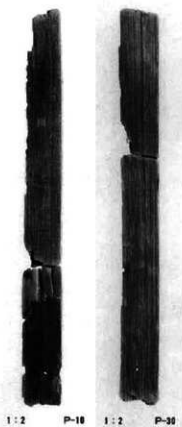
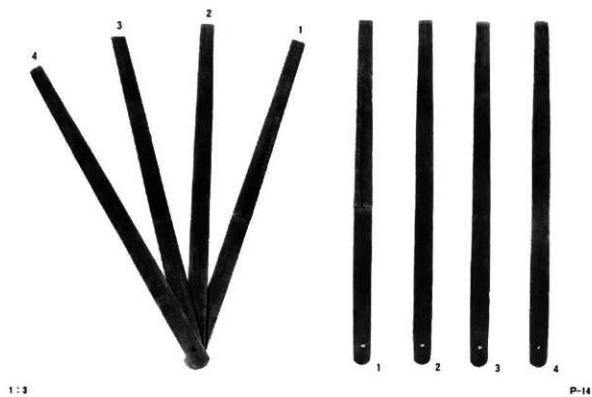
I-113

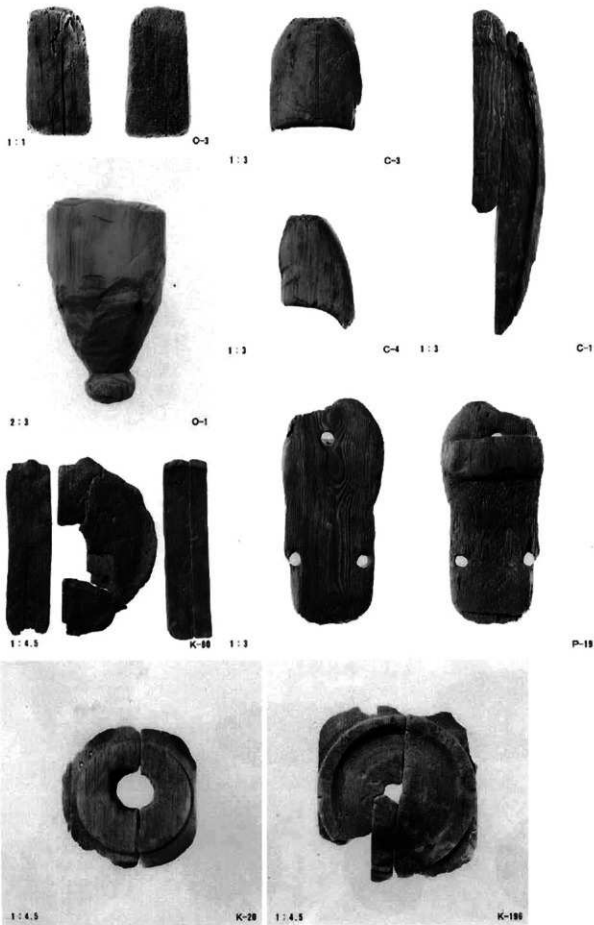


I-725



I-724









J-425



J-428



J-124



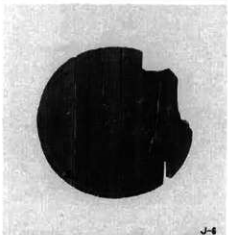
J-706



J-116



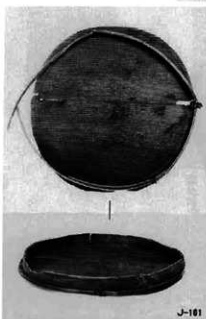
J-198



J-6



J-3



J-101



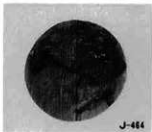
J-143



J-284



J-221



J-404



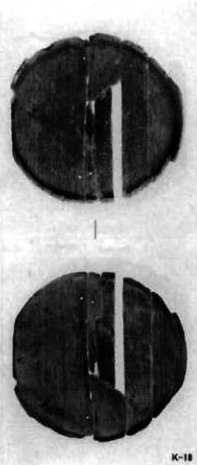
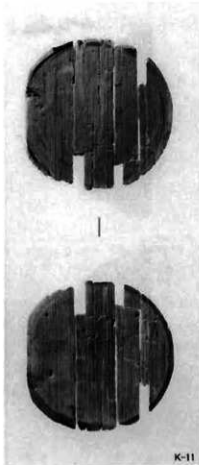
J-350



K-33

K-34

K-34



K-35

K-11

K-18



K-23

K-192

K-68



K-9

K-27

K-21



K-120

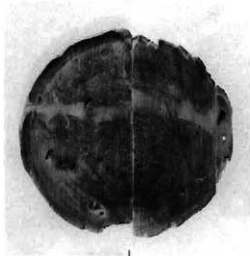
K-84

K-203



K-123

K-125



K-18

K-122

K-4



K-2

K-17

K-111



K-131



K-134



K-132

K-12



J-109



J-327

J-542

J-4



J-100

J-55

J-2



J-5

J-671

J-694



J-584

J-525



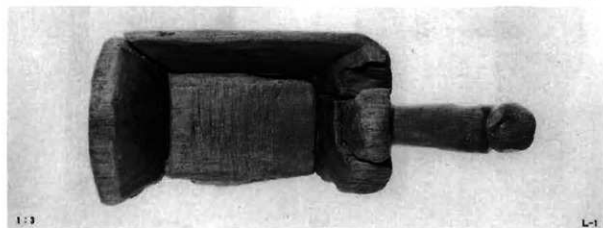
N-16

N-13



N-15

N-14



1:3

L-1





N-4



N-17



N-8



V-2



1 : 2

N-6



N-7



N-18



N-11

1 : 2



N-10



1:3

Q-15



1:4



細部 1:1



細部 1:1

Q-15



細部 1:1

Q-15



Q-206



Q-207



Q-208



Q-205



Q-36



Q-37



Q-6



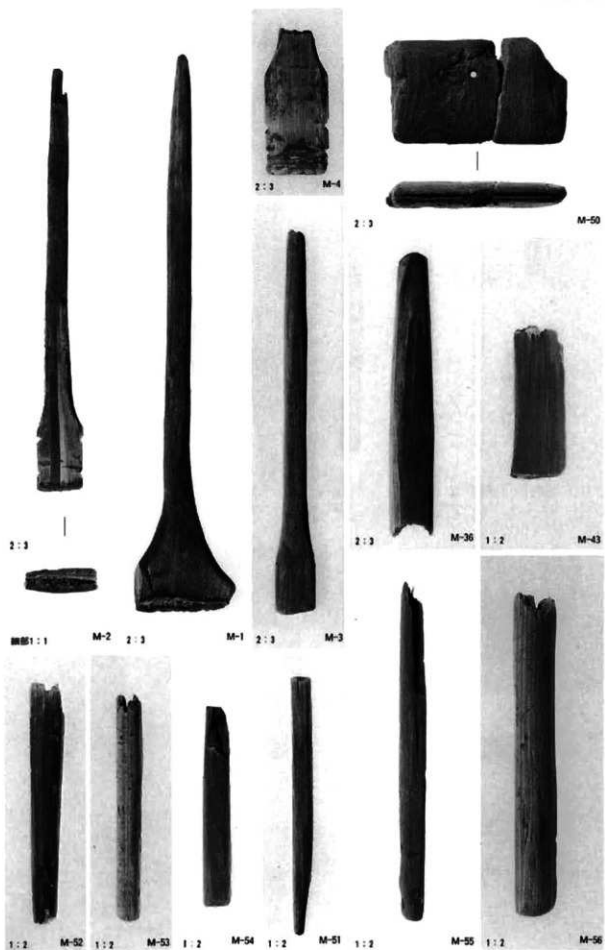
Q-28

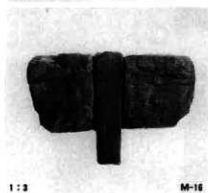
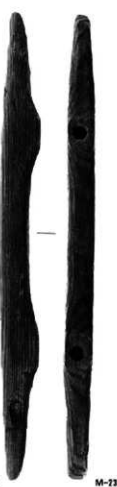
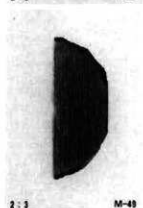
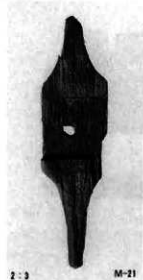


Q-27



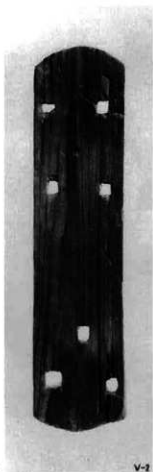
Q-56



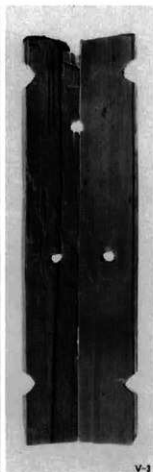




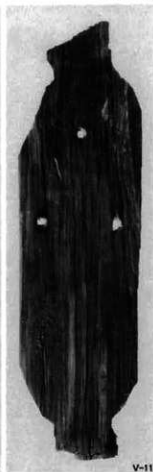
1 : 2



V-14

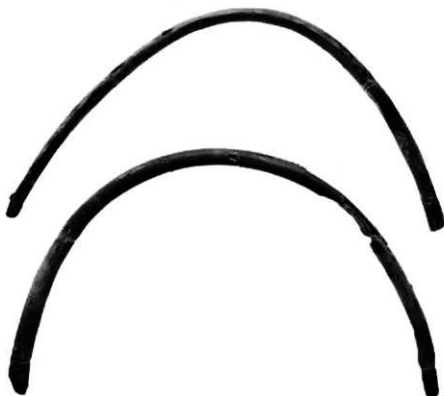


V-2



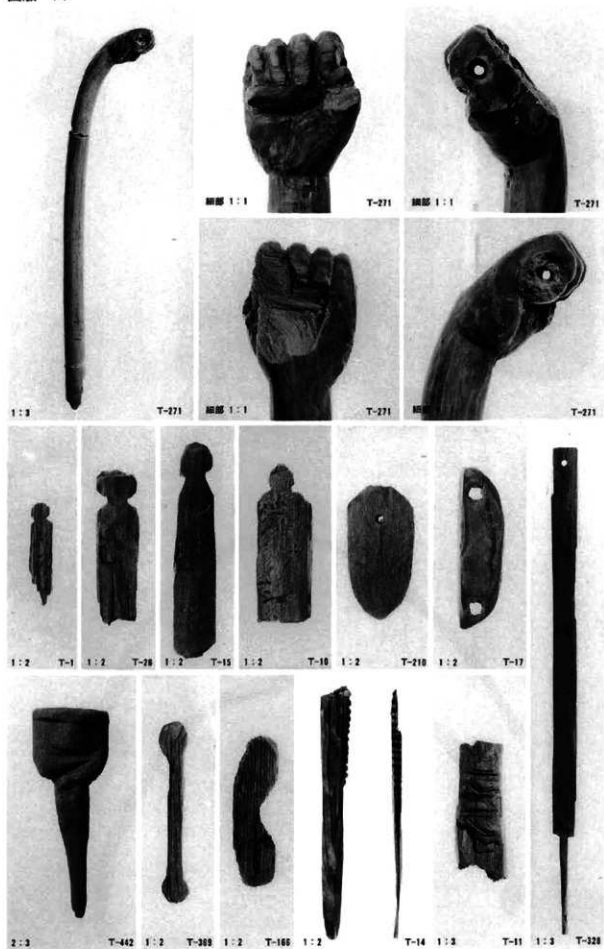
V-3

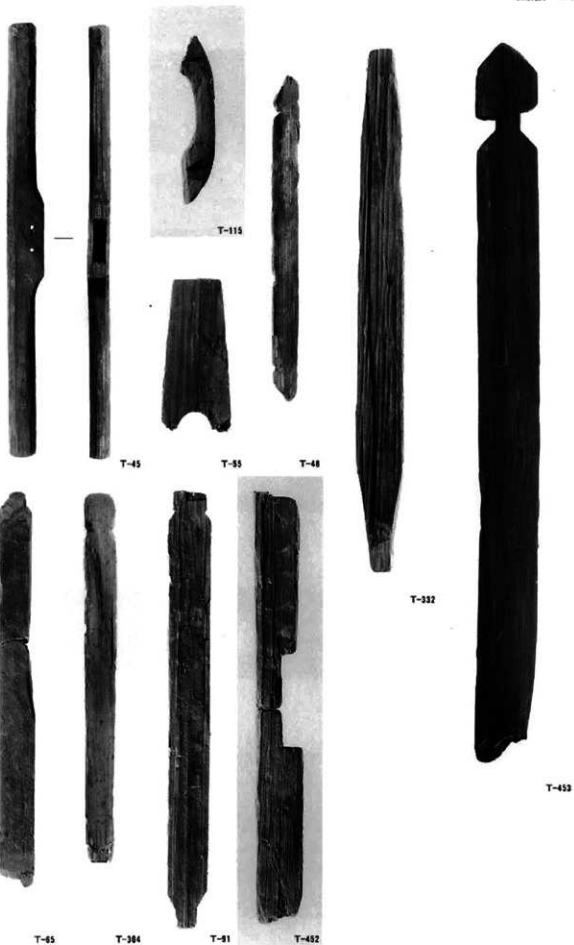
V-11



V-5

V-15









1:7

Q-134



1:7

Q-133



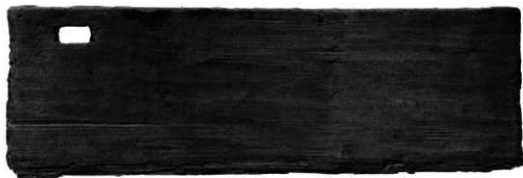
1:4

Q-83



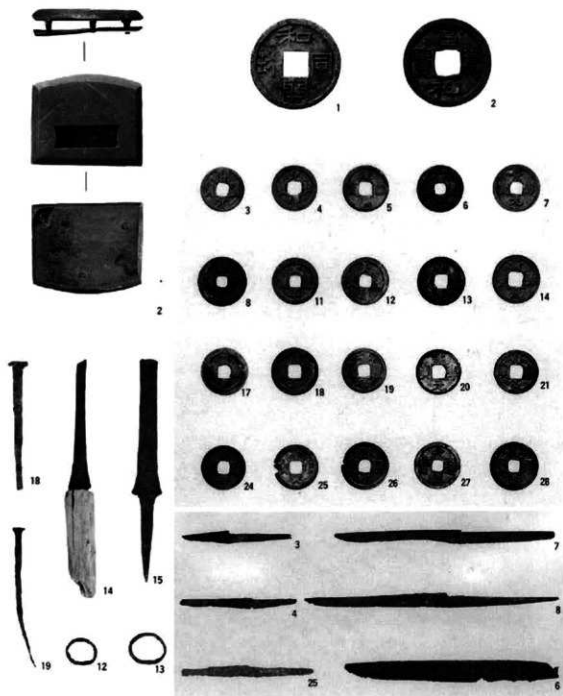
1:8

Q-135



1:4

Q-137



兵庫県文化財調査報告 第99冊

但馬国府関連

## 深田遺跡・カナゲ田遺跡

日高バイパス建設工事に伴う但馬国府推定地内発掘調査報告書

平成3年3月発行

編集 兵庫県教育委員会埋蔵文化財調査事務所

〒652 神戸市兵庫区荒田町2丁目1-5

TEL (078) 531-7011

発行 兵庫県教育委員会

〒650 神戸市中央区下山手通5丁目10-1

TEL (078) 341-7711

印刷 菱三印刷株式会社

〒652 神戸市兵庫区大開通2丁目2-11

TEL (078) 576-3961