



1



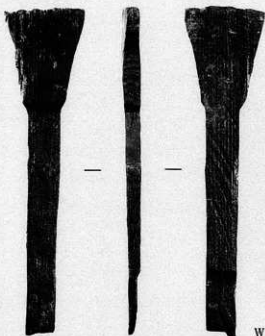
2



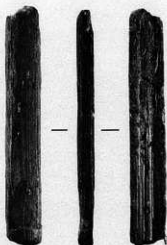
5



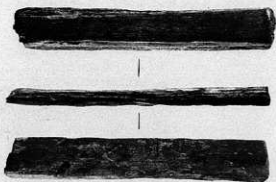
4



W001
1 : 3



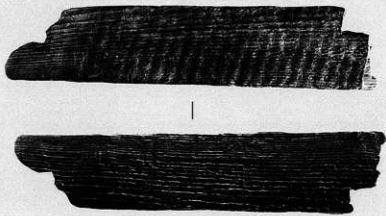
W002
1 : 3



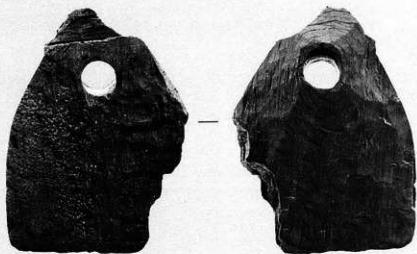
W003
1 : 3



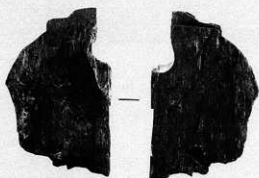
W004
1 : 4



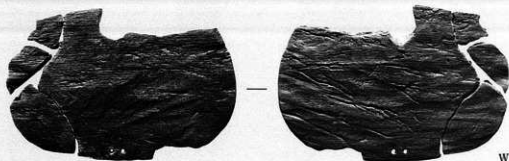
W005
1 : 4



W006
1 : 4



W007
1 : 4



W008
1 : 4



W009
1 : 4



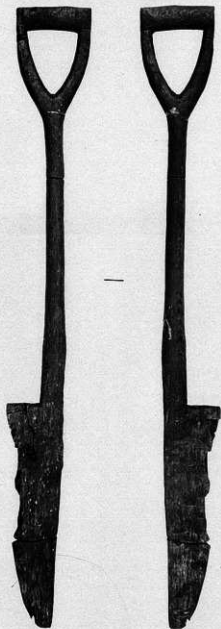
W011
1 : 3



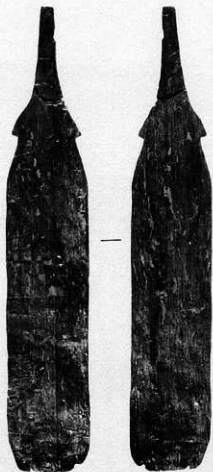
W012
1 : 4



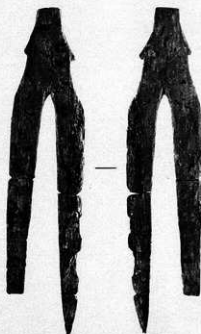
W013
1 : 4



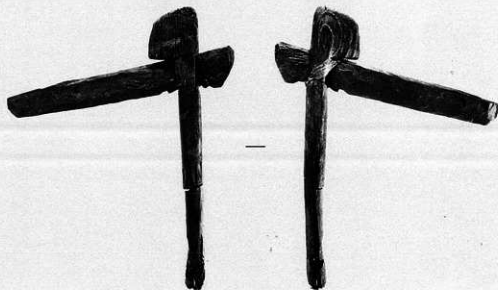
W010
1 : 6



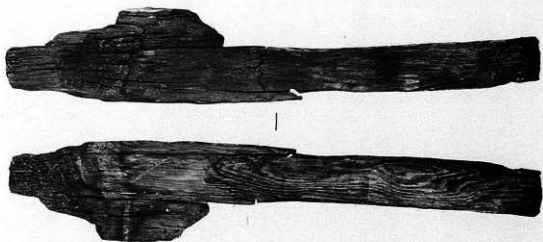
W014
1 : 6



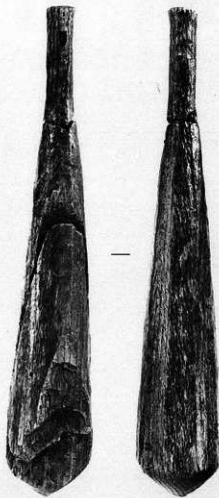
W015
1 : 6



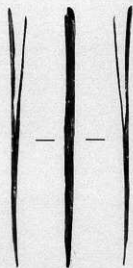
W016
1 : 4



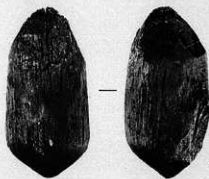
W172
1:6



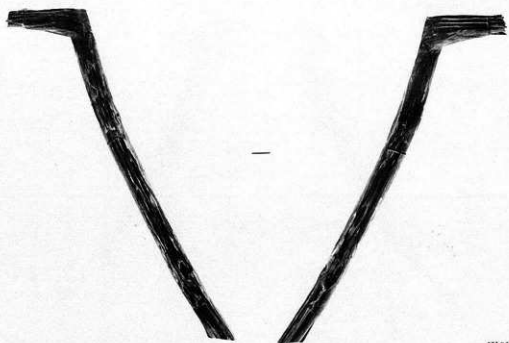
W017
1:4



W044
1:3



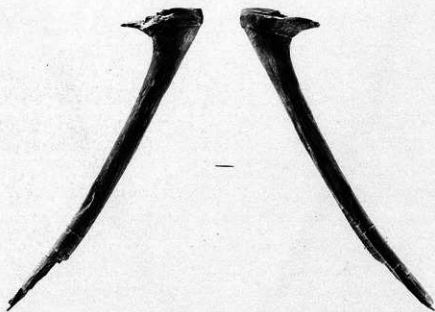
W018
1:4



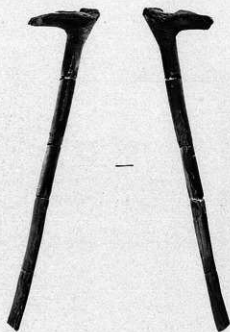
W019
1 : 4



W020
1 : 6



W021
1 : 4

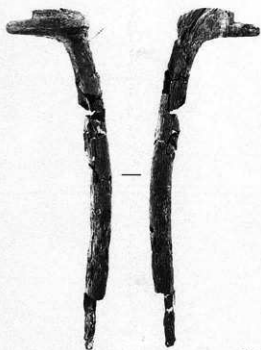


W022
1 : 6



W023
1 : 6





W024
1:4



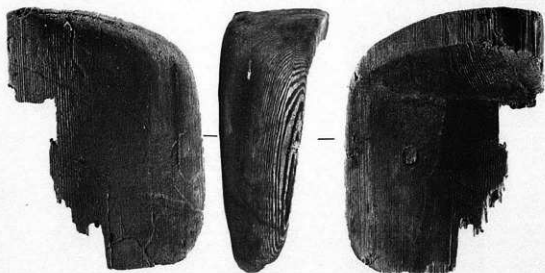
W025
1:4



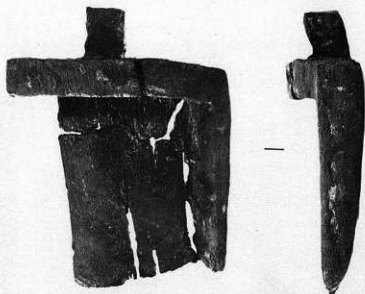
W037
1:3



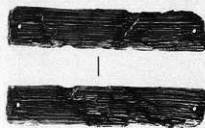
W037



W038
1 : 3

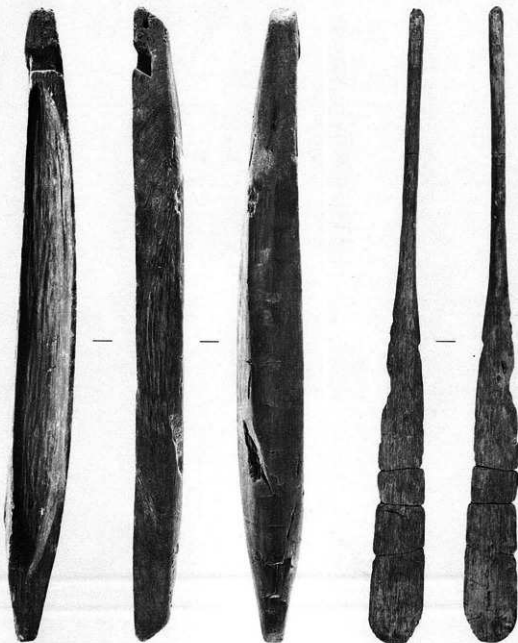


W039
1 : 3



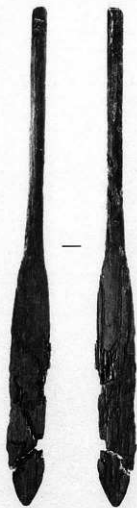
W040

1 : 3

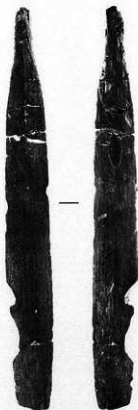


W036
1 : 4

W026
1 : 6



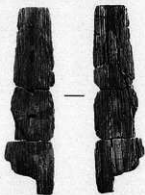
W027
1 : 6



W031
1 : 6



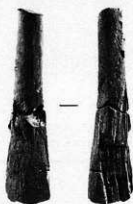
W030
1 : 6



W029
1 : 6



W029'



W032
1 : 4



W033
1 : 4



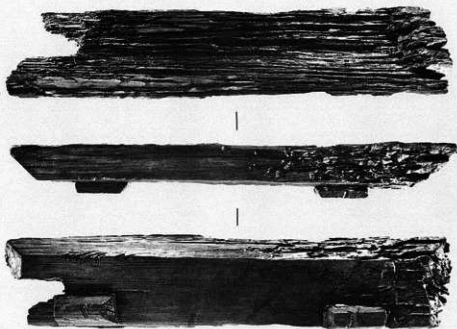
W034
1 : 4



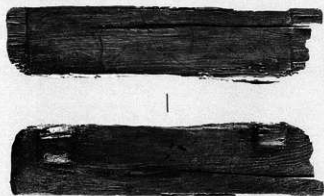
W028
1 : 4



W035
1 : 4



W041
1 : 6



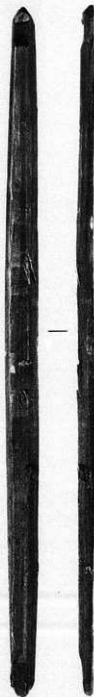
W042
1 : 6



W043
1 : 6



W043



W175
1 : 4



W046
1 : 4



W048
1 : 4



W049
1 : 3



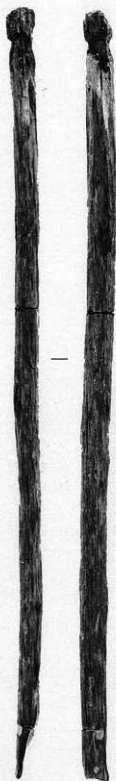
W050
1 : 3



W051
1 : 3



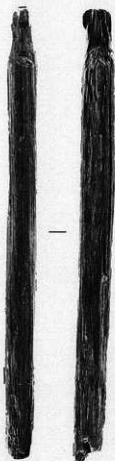
W052
1 : 3



W054
1 : 2.7



W053
1 : 6



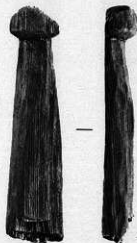
W055
1 : 4



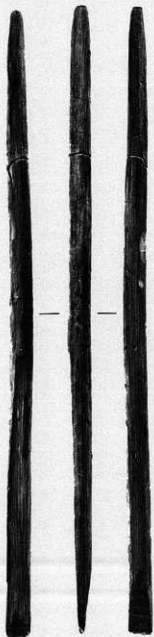
W047
1 : 4



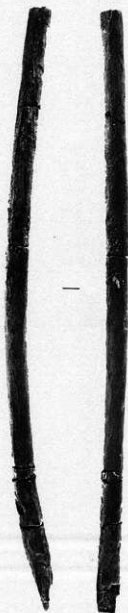
W056
1 : 3



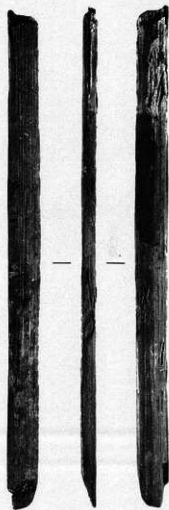
W045
1 : 3



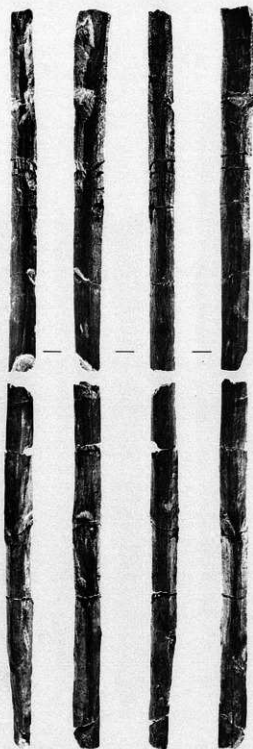
W057
1 : 4



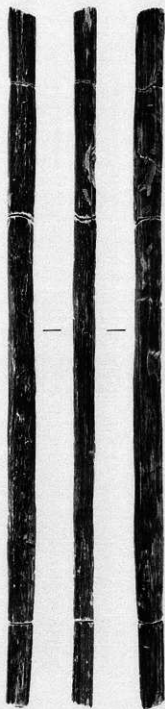
W058
1 : 4



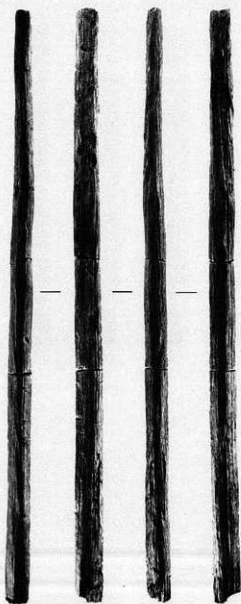
W059
1 : 4



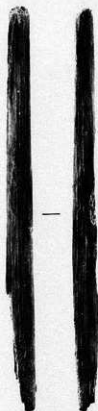
W060
1 : 5



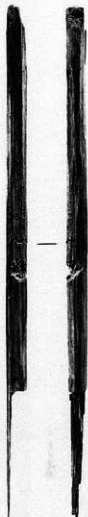
W061
1 : 5



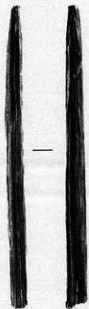
W062
1 : 4



W063
1 : 4



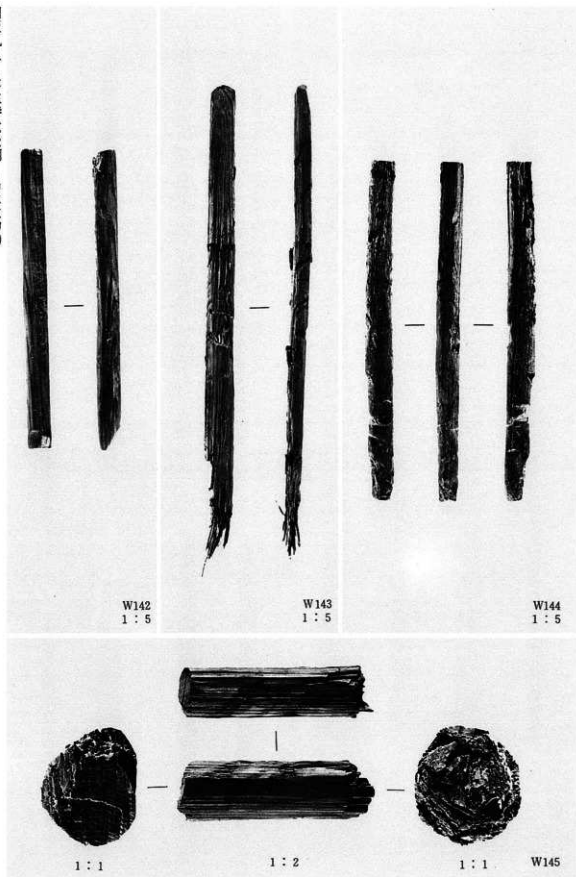
W065
1 : 4



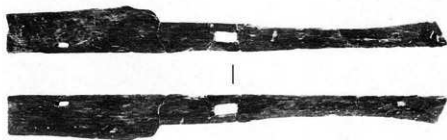
W064
1 : 4



W066
1 : 4



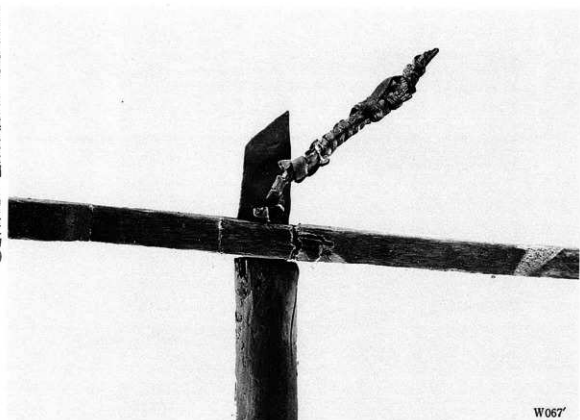
W142~144. 柄状木製品 W145 切断痕のある棒状加工木



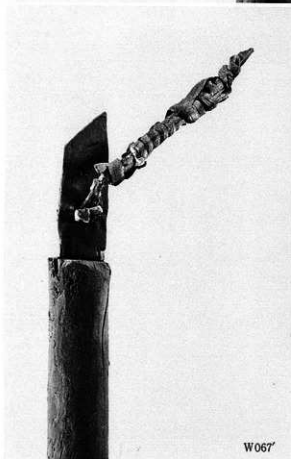
W067
1 : 6



W067
1 : 6



W067'



W067'

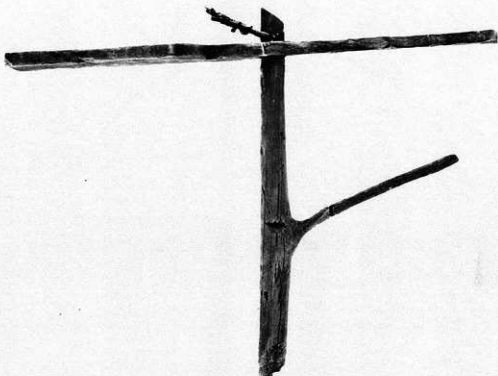


W067'

W067' 用途不明木製品(枝付棒状組合せ木製品)部分拡大



W068
1 : 6



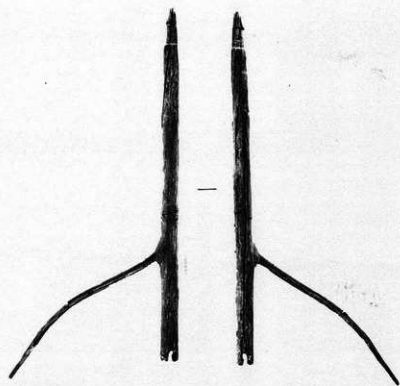
W068
1 : 6



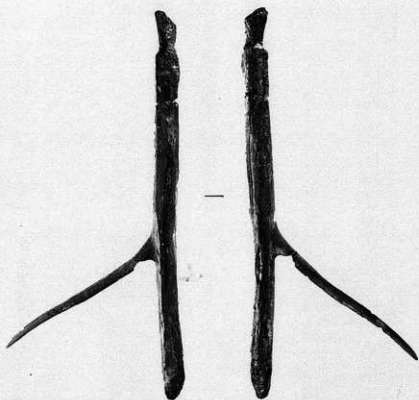
W068'



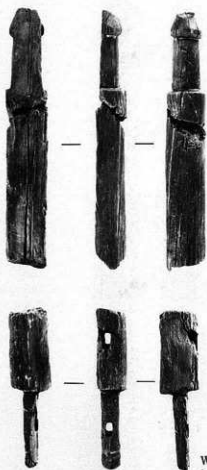
W068'



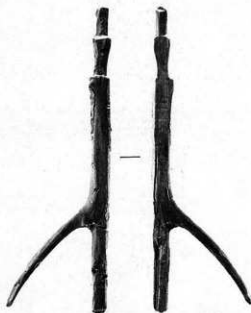
W070
1 : 8



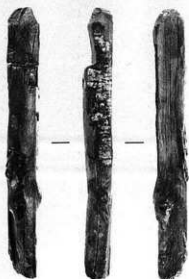
W071
1 : 6



W073
1 : 4



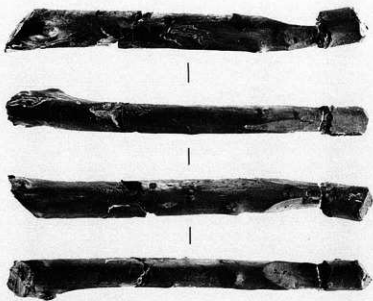
W069
1 : 6



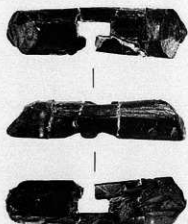
W072
1 : 4



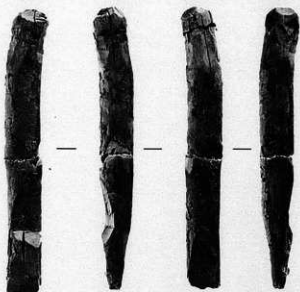
W074
1 : 4



W075
1 : 4



W081
1 : 2



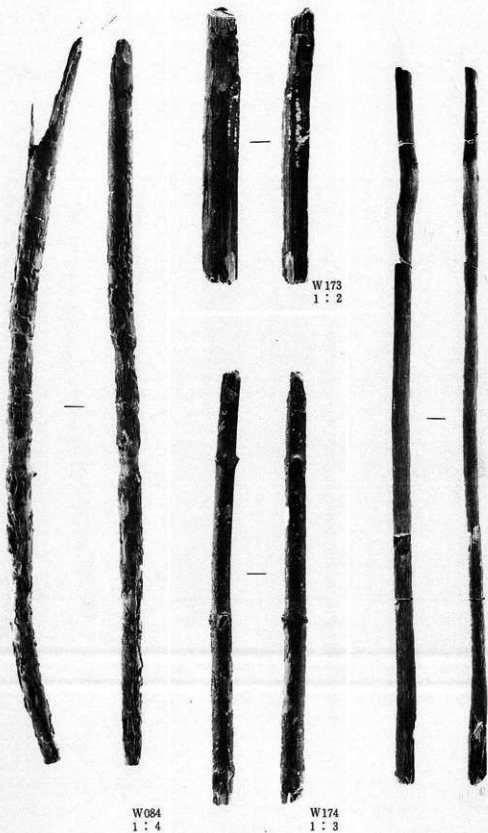
W077
1 : 3



W079
1 : 3



W082
1 : 3



W084
1 : 4

W173
1 : 2

W174
1 : 3

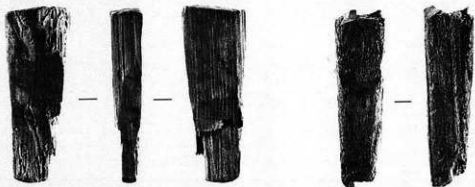
W085
1 : 4



W083
1 : 4

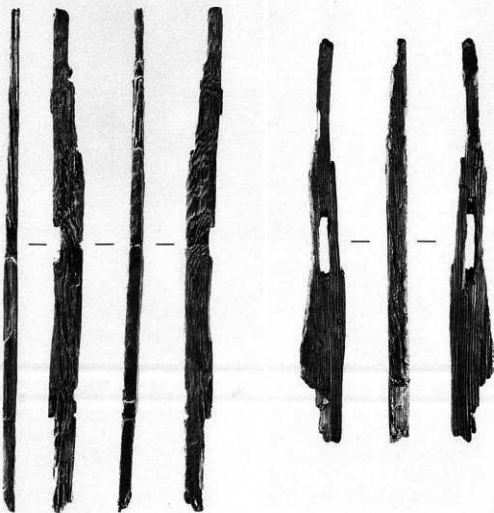
W086
1 : 6

W076
1 : 4



W078
1 : 3

W087
1 : 3

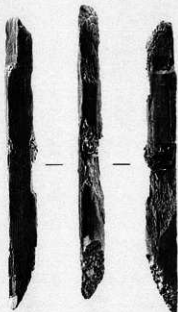


W088
1 : 4

W089
1 : 3



W090
1 : 4



W091
1 : 3



W099



W099
1 : 4



|



W092
1 : 4



|



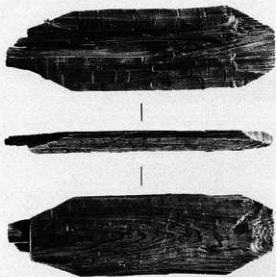
W100
1 : 4



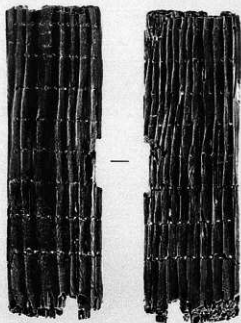
|



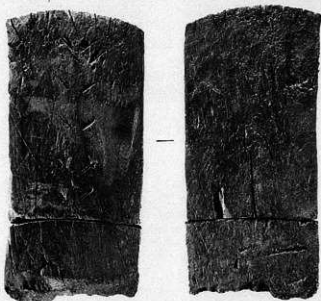
W096
1 : 4



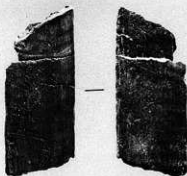
W176
1 : 4



W093
1 : 3



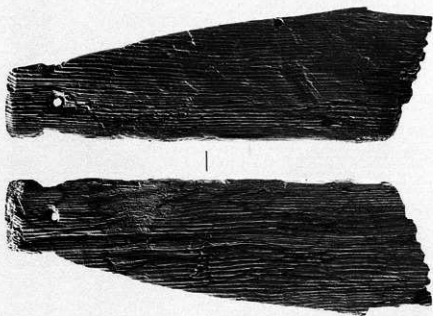
W095
1 : 5



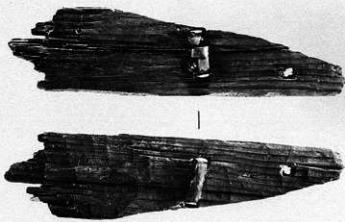
W101
1 : 4



W101



W094
1 : 4



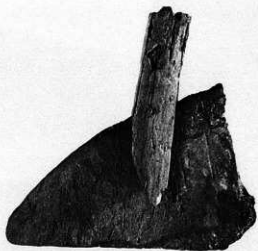
W097
1 : 4



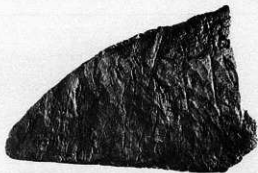
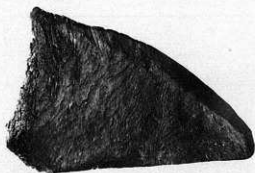
W097



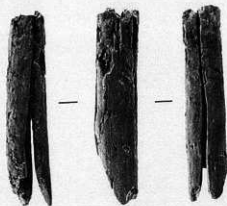
W094



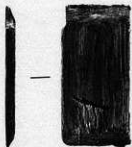
W098
1 : 5



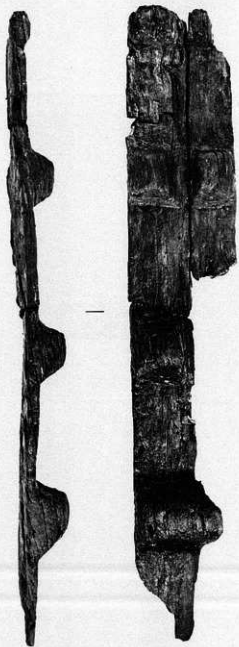
W098'
1 : 5



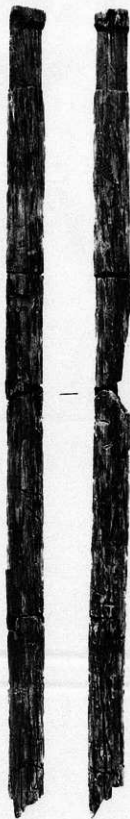
W098'
1 : 5



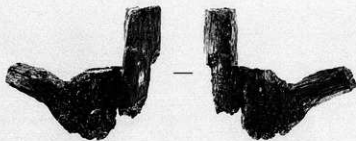
W080
1 : 2



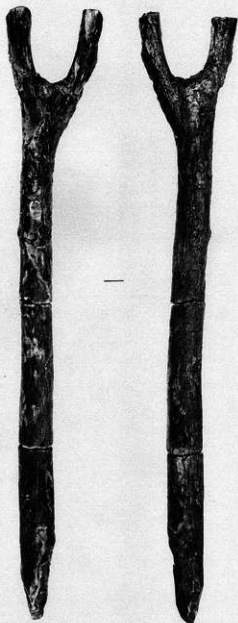
W102
1 : 6



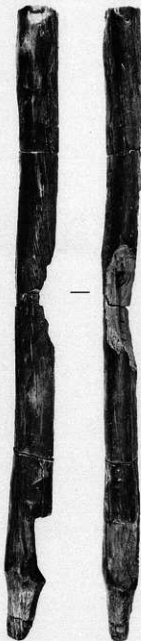
W109
1 : 10



W106
1 : 6



W105
1 : 6



W104
1 : 6



W103
1 : 4



W110
1 : 4



W111
1 : 4



W112
1 : 6



W113
1 : 6



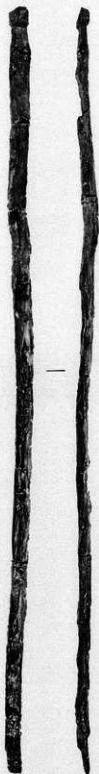
W114
1 : 6



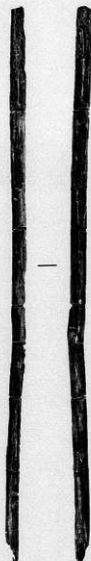
W115
1 : 8



W116
1 : 8



W117
1 : 8



W118
1 : 8



W120
1:6



W120



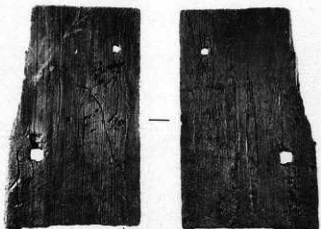
W121
1:6



W122
1:4



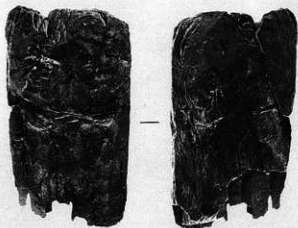
W124
1:4



W125
1 : 5



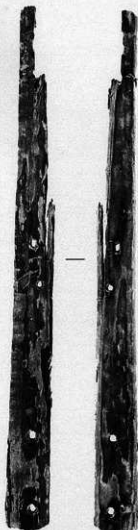
W127
1 : 3



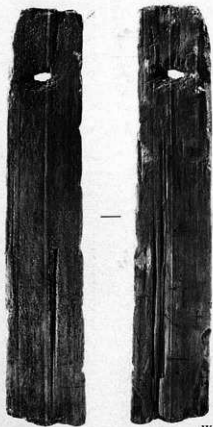
W123
1 : 5



W126
1 : 4



W128
1 : 6



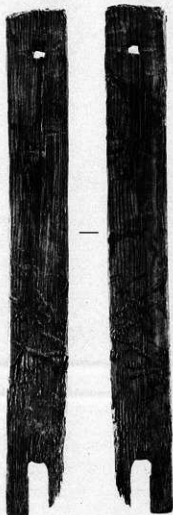
W129
1 : 6



W130
1 : 6



W132
1 : 6



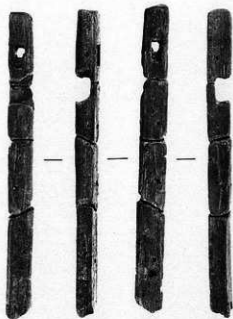
W131
1 : 6



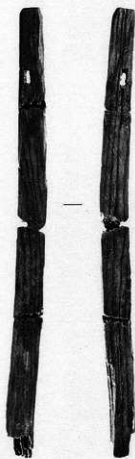
W133
1 : 6



W134
1 : 6



W107
1 : 4



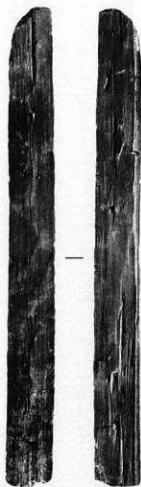
W108
1 : 6



W107a



W107b



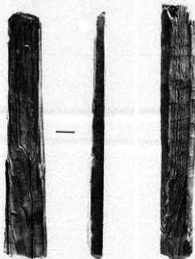
W135
1:5



W136
1:5

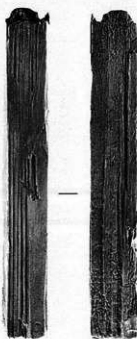


W137
1:5



W138
1:5

W139
1:5



W140
1:5



W141
1:5



W146



W152
1 : 6



W153
1 : 6



W151



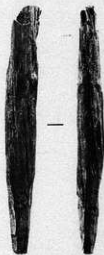
W147



W148

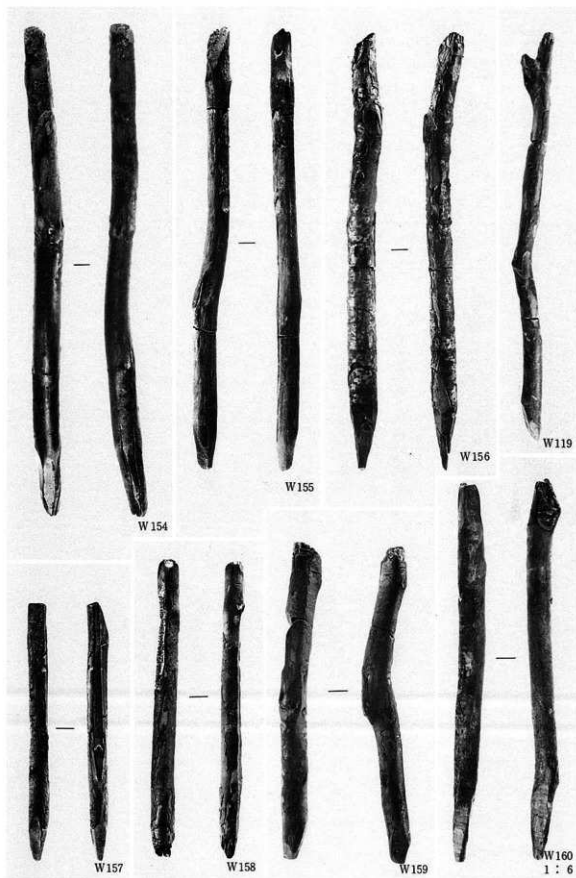


W149

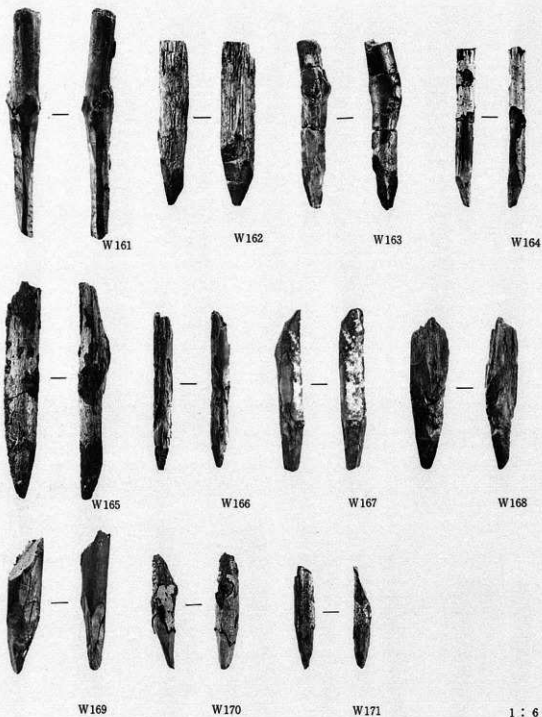


W150

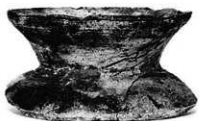
1 : 8



W119 又杭 W154~160 杭



W161~171 杭



10



59



17



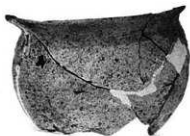
13



14



15



31



29



34



16



22



66



69



67



68



70



77



72



76



73



75



103



86



91



87



92



79



82



83



13



90



89



93



889



99



101



111



110



108



112



113



118



116



150



143



167



168



170



164



182



176



216



218



217



223



231



243



237



236



270



246



247



160



252



251



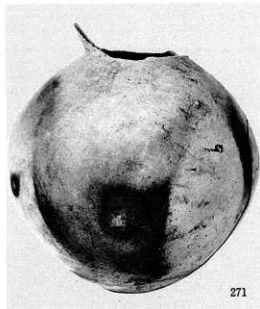
263



264



265



271



245



284



285



275



286



279



290



302



303



889



307



300



312



311



316



313



321



330



329



325



324



355



361



T-8



T-11



T-14



T-16



T-13



T-10



T-7



T-6



T-9



T-12



T-15



398



396



T-17



404



368



387



382



410



412



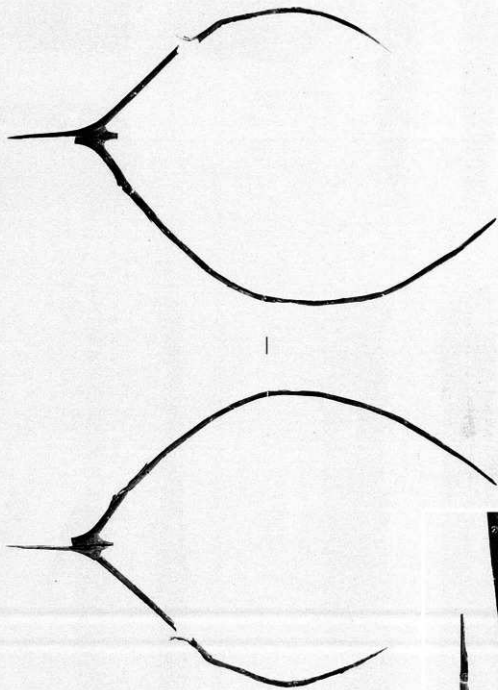
407



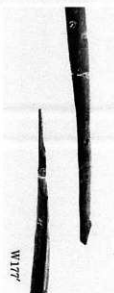
408



890



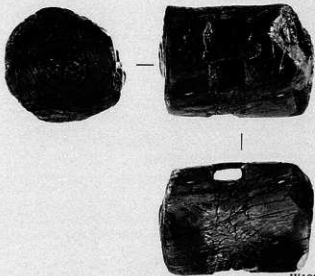
W177
1:6



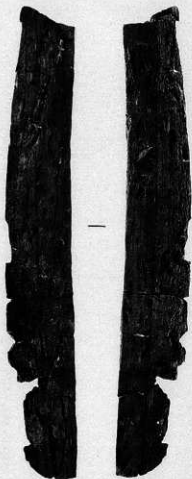
W177



W184
1 : 4



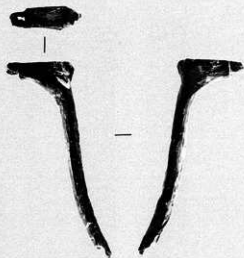
W188
1 : 3



W183
1 : 4



W186
1 : 6



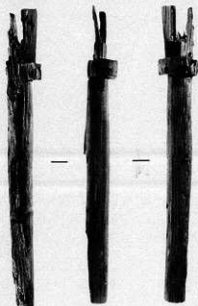
W178
1 : 3



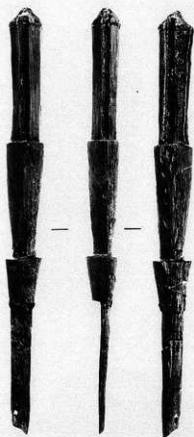
W180
1 : 4



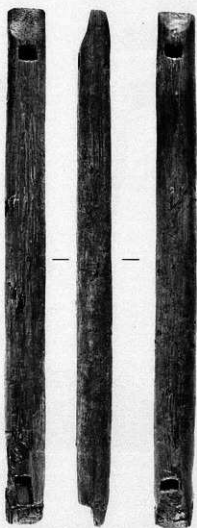
W185
1 : 4



W182
1 : 3



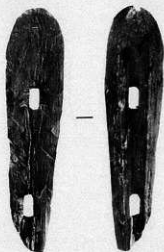
W181
1 : 4



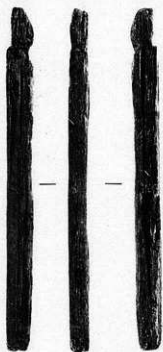
W190
1 : 6



W189
1 : 6



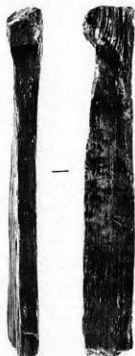
W179
1 : 3



W192
1 : 4



W194
1 : 3



W196
1 : 4



W193
1 : 4



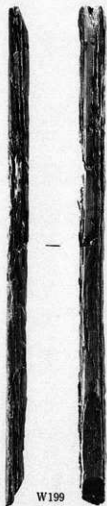
W195
1 : 3



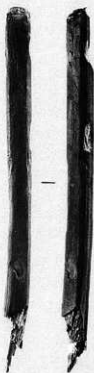
W198
1 : 4



W197
1 : 3



W199
1 : 4



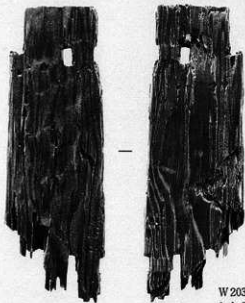
W200
1 : 3



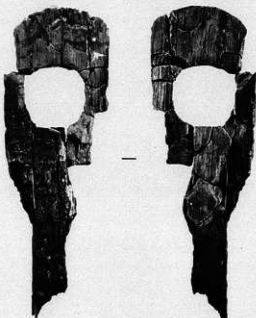
W201
1 : 2



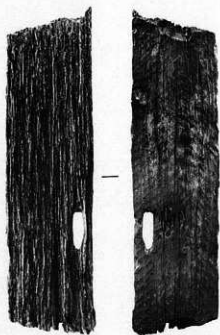
W202
1 : 2



W203
1 : 3



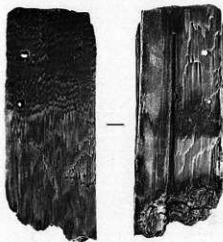
W204
1 : 4



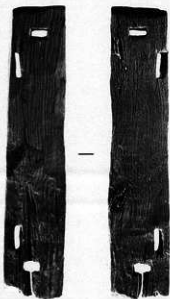
W205
1 : 6



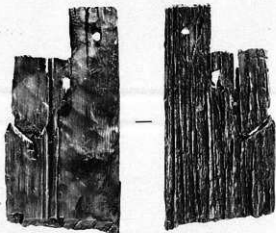
W205'



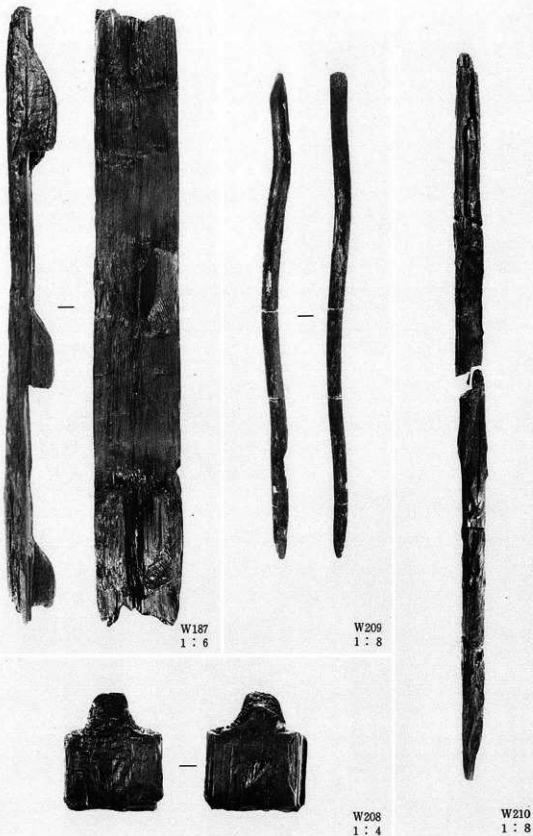
W206
1 : 3



W191
1 : 6



W207
1 : 6



W187 はしご W208 柄のある柱材 W209 棒状木製品 W210 杭



423



413



422



419



426



418



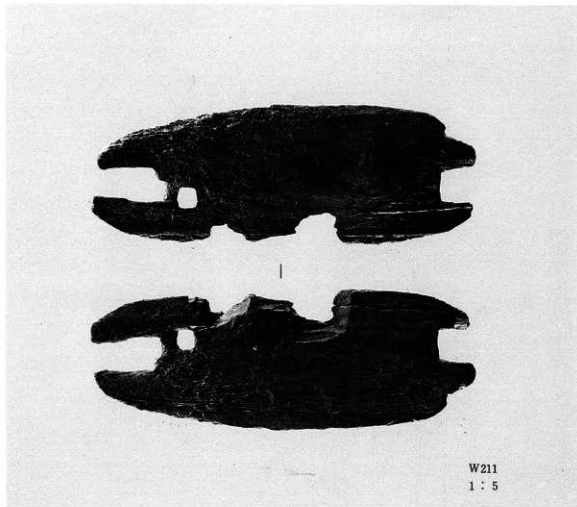
425



427



421



W211

1 : 5

6 B トレンチ古墳遺構面・Ⅱ (421)

B トレンチ河川・Ⅰ (W211)

C トレンチ河川・Ⅰ (427)



430



453



S-2



456



455



458

457

459



460



461

462



463



466



475

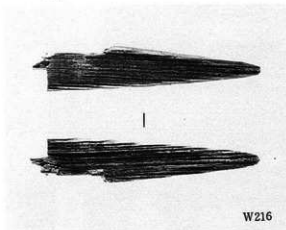
468



S-1



441



W216



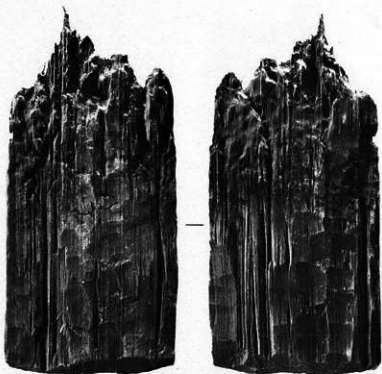
447



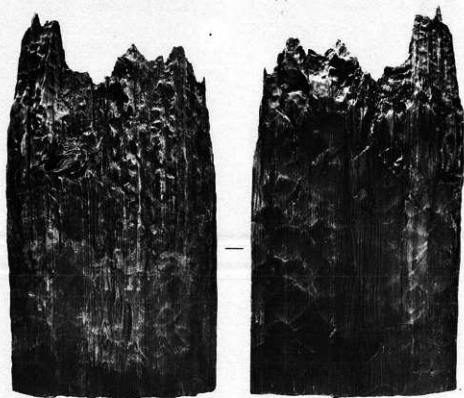
445



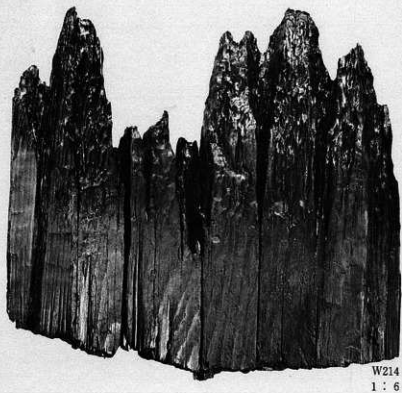
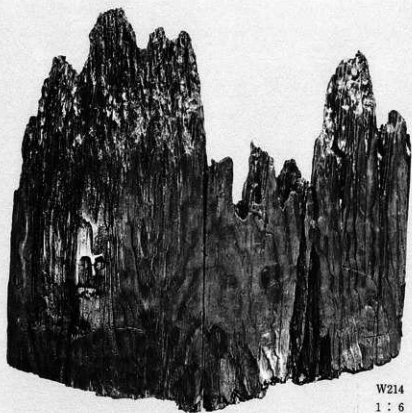
444

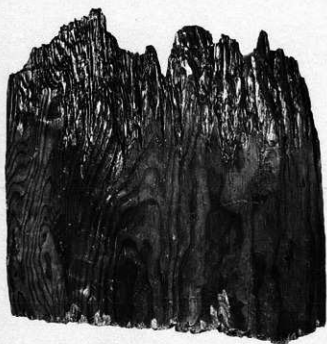


W212
1 : 6



W213
1 : 6





891



507



W215
1 : 6



505



506



723



554



514



553



510



509



513



670



839



837



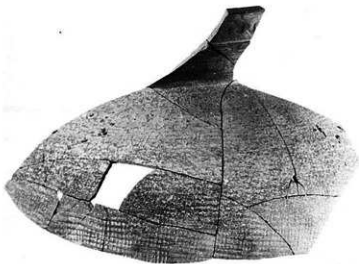
877



835



666



665



779



T-2



T-23



T-24



T-3



T-1



S-4



S-5



T-22



T-25



T-26



T-21



T-17



T-18



M-2



M-5



M-1

S-8



M-4



M-3



M-6



M-7

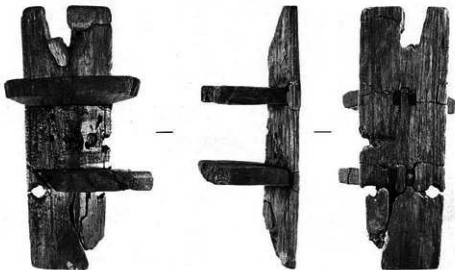




W218
1 : 2



W219
1 : 3



W217
1 : 3

図版一六〇 古墳時代Ⅰ・Ⅱ 遺物調整技法(1)

