



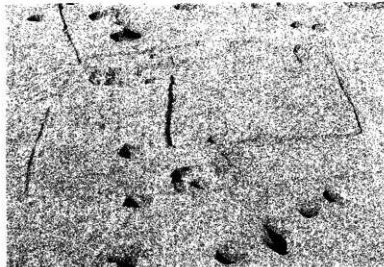
◀ 第117号住居跡



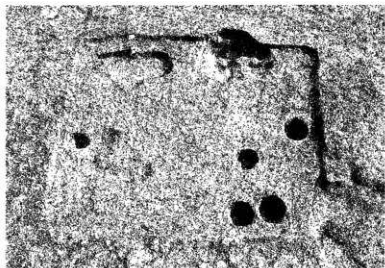
◀ 第117号住居跡遺物出土状況(1)・(2)



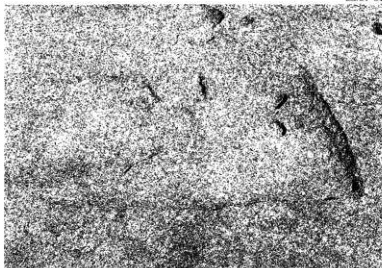
◀ 第113号住居跡



◀ 第110・111号住居跡



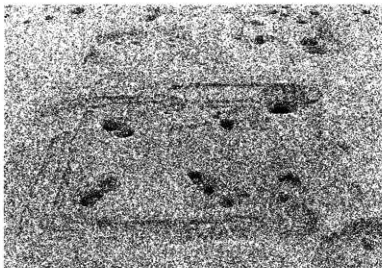
◀ 第113号住居跡



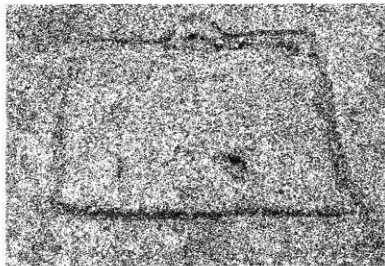
◀ 第114号住居跡



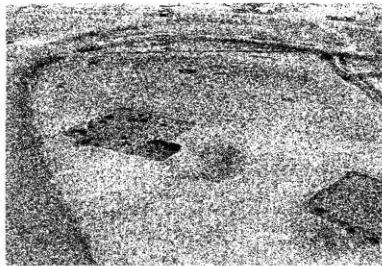
◀ 第119号住居跡遺物出土状況



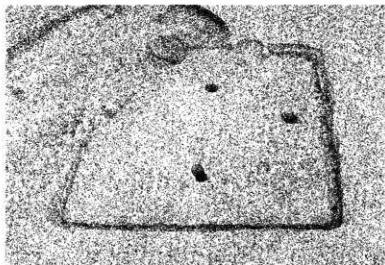
◀ 第116、117号住居跡



◀ 第113号住居跡



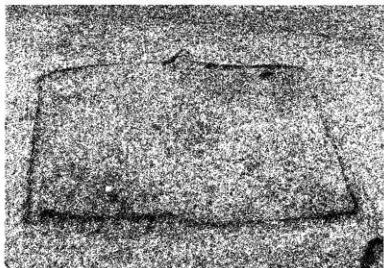
◀ 第112号住居跡周辺



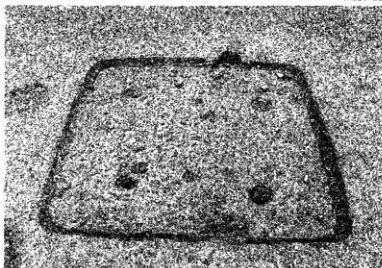
◀ 第114号住居跡



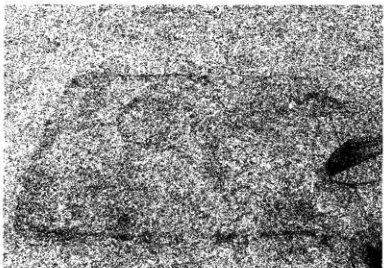
◀ 第112号住居跡



◀ 第176号住居跡



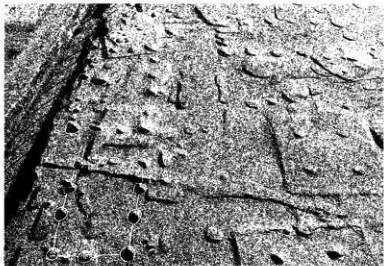
◀ 第175号住居跡



◀ 第172号住居跡



◀ 第175号住居跡遺物出土状況



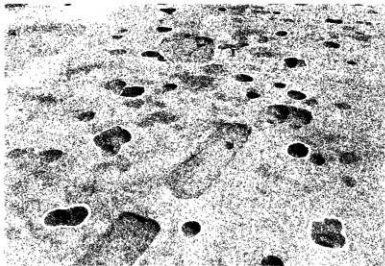
◀ 第2、4号独立柱建物跡



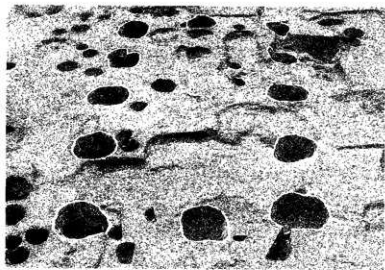
◀ 第1群独立柱建物群



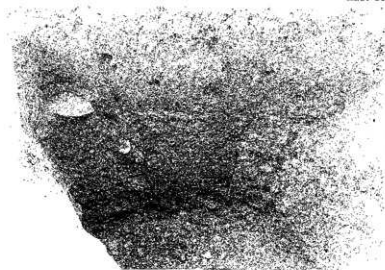
◀ 第3号独立柱建物跡



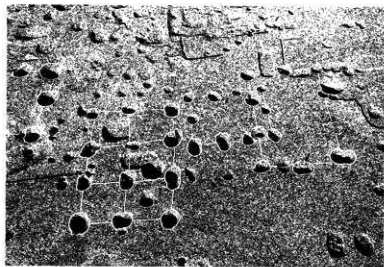
◀ 第1号独立柱建物跡



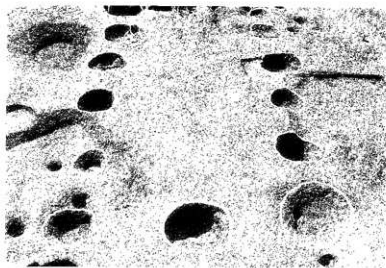
▲第5号独立柱建物跡



▲第3号独立柱建物跡P断面



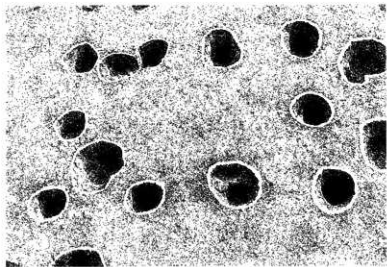
▲第6、8号独立柱建物跡



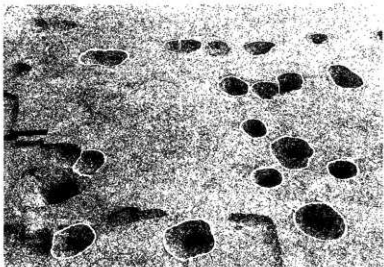
▲第4号独立柱建物跡



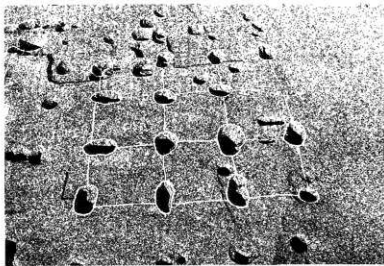
◀ 第6号獨立柱建物跡



◀ 第7号獨立柱建物跡



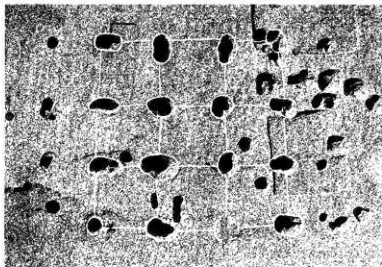
◀ 第8号獨立柱建物跡



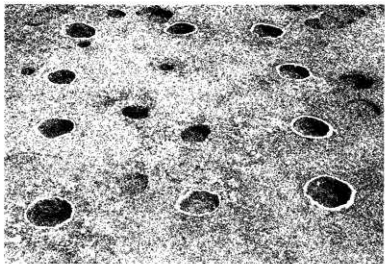
◀ 第9号獨立柱建物跡(1)



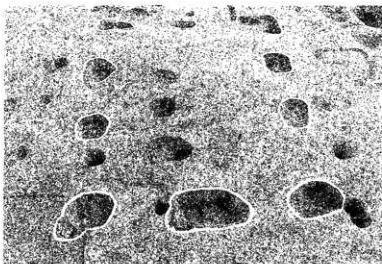
◀ 第5・14・15号獨立柱建物跡



◀ 第9号獨立柱建物跡(2)



◀ 第15号獨立柱建物跡



◀ 第10号獨立柱建物跡

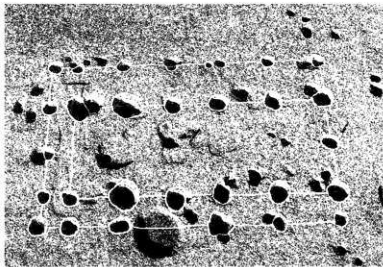




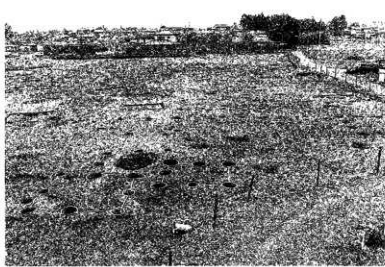
◀ 第16号掘立柱建物跡



◀ 第17号掘立柱建物跡(1)



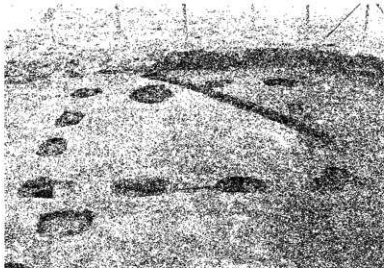
◀ 第17号掘立柱建物跡



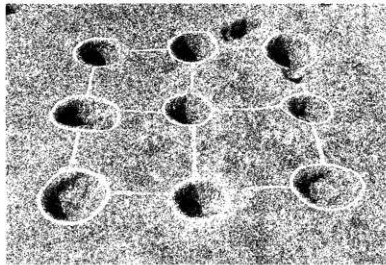
◀ 第17号掘立柱建物跡(2)



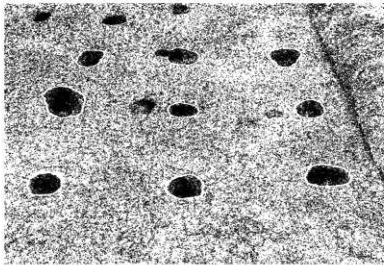
◀ 第26号掘立柱建物跡



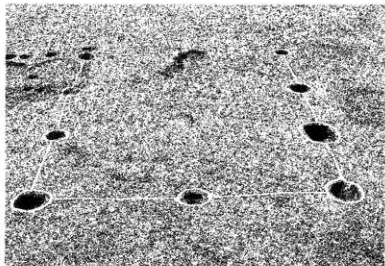
◀ 第18号掘立柱建物跡



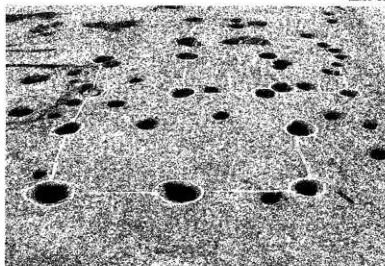
◀ 第27号掘立柱建物跡



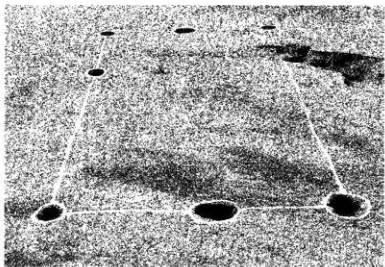
◀ 第21号掘立柱建物跡



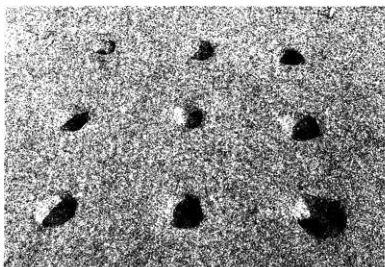
◀ 第32号掘立柱建筑物跡



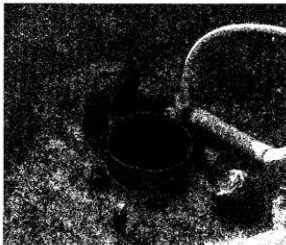
◀ 第29・30号掘立柱建筑物跡



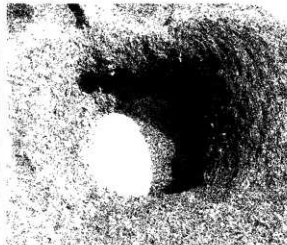
◀ 第39号掘立柱建筑物跡



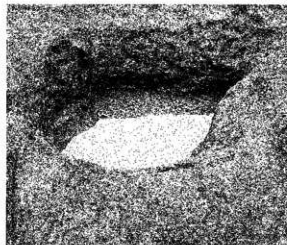
◀ 第31号掘立柱建筑物跡



▲第3号井尸迹曲物桶出土状况



▲第3号井尸迹

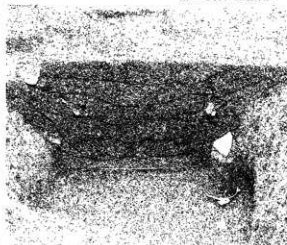


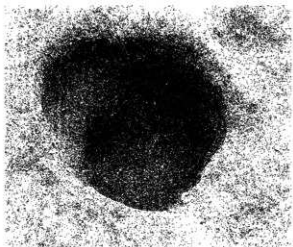
▲第1号井尸迹

第4号井尸迹▼

第3号井尸迹断面▼

第1号井尸迹断面▼

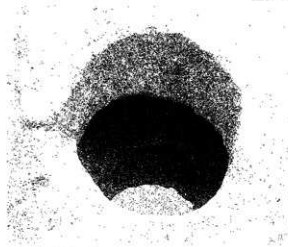




▲第11号井尸跡



▲第8号井尸跡遺物出土狀況

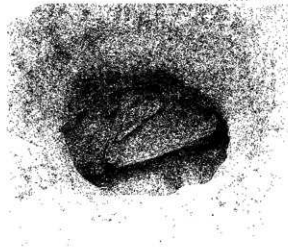
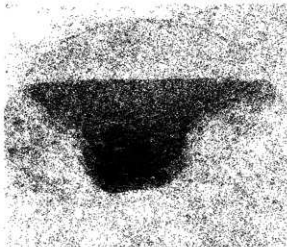
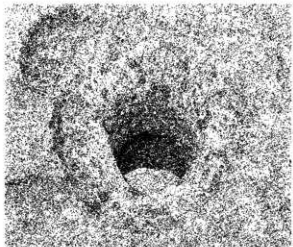


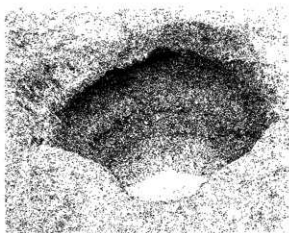
▲第7号井尸跡

第12号井尸跡▼

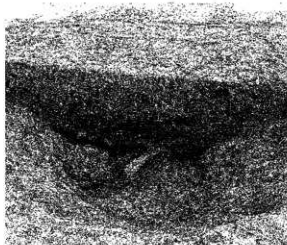
第10号井尸跡断面▼

第8号井尸跡▼

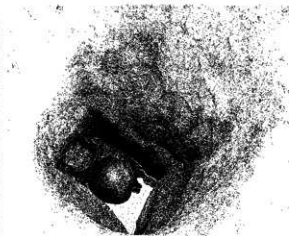




▲第18号井尸踪

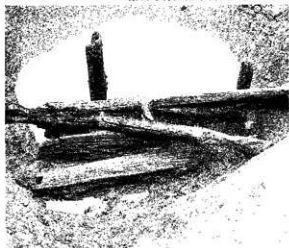


▲第17号井尸踪断面

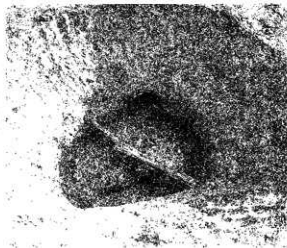


▲第13号井尸踪遗物出土状况

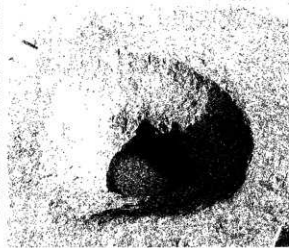
第18号井尸踪木材出土状况(1)▼

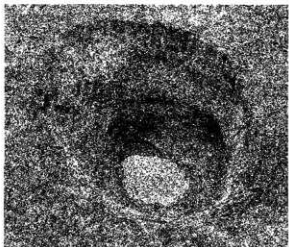


第17号井尸踪遗物出土状况▼

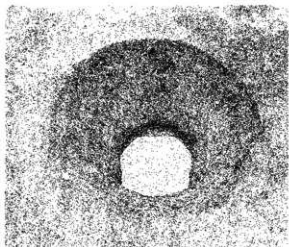


第17号井尸踪▼

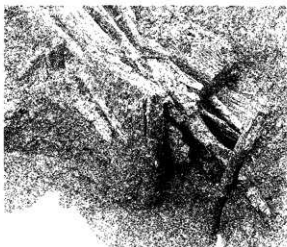




▲24号井尸迹

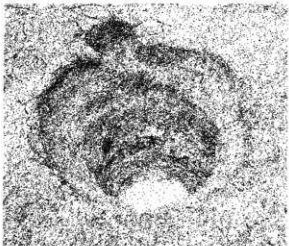


▲第22号井尸迹

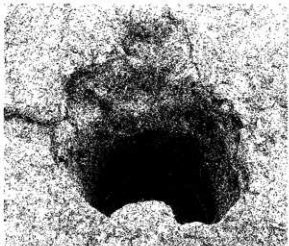


▲第18号井尸迹木材出土状况(2)

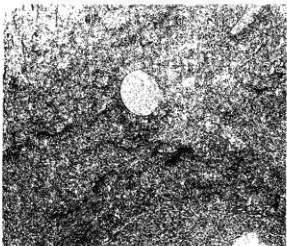
第26号井尸迹▼

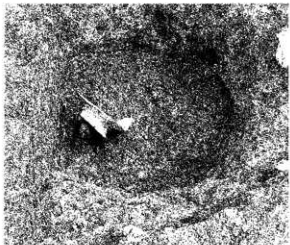


第23号井尸迹▼



第18号井尸迹木制品出土状况▼

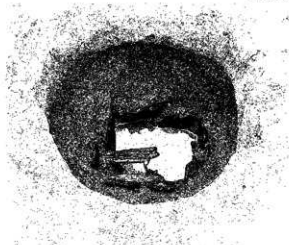




▲第32号井尸部遗物出土状况

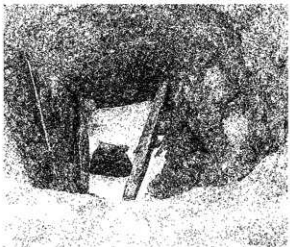


▲第31号井尸部

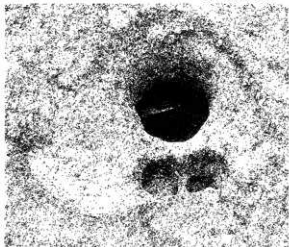


▲第27号井尸部

第34号井尸部遗物出土状况▼



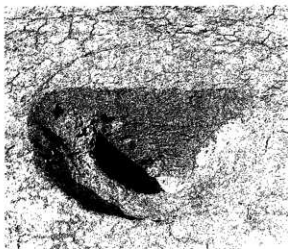
第32号井尸部▼



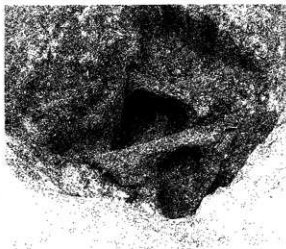
第27号井尸部井侧检出状况▼



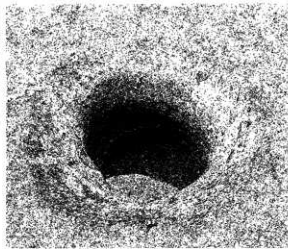




▲第45号井尸迹断面



▲43号井尸迹木材检出状况

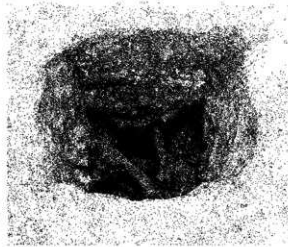
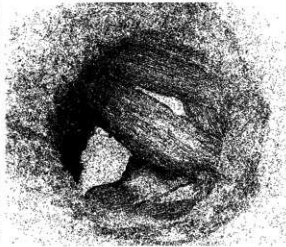
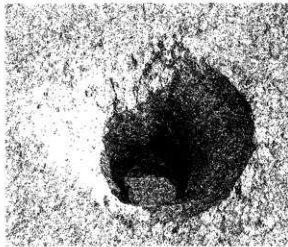


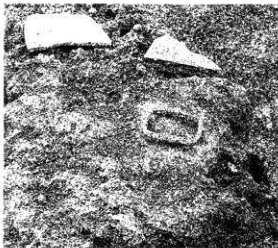
▲第36号井尸迹

第46号井尸迹▼

第44号井尸迹木材检出状况▼

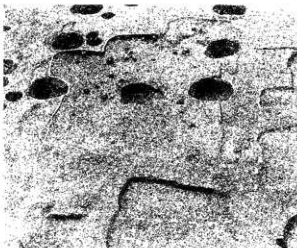
第43号井尸迹▼





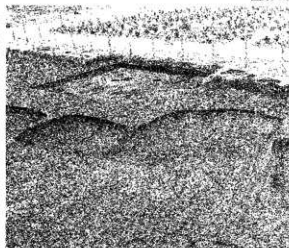
▲第1号小鍛冶遺構遺物出土状況

第1号鍛冶遺構P<sub>4</sub>上面▼



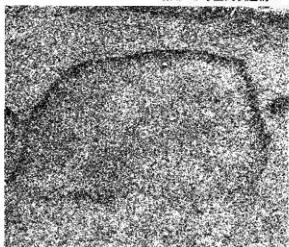
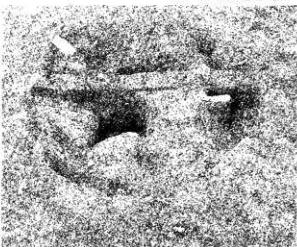
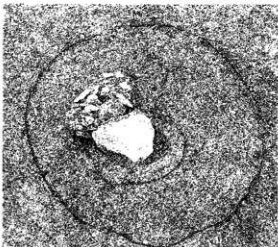
▲第1号小鍛冶遺構

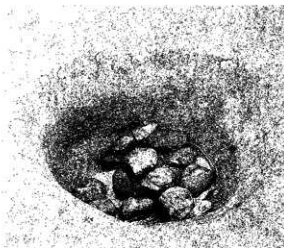
第1号小鍛冶遺構P<sub>3</sub>▼



▲第1～3号鑿穴状遺構

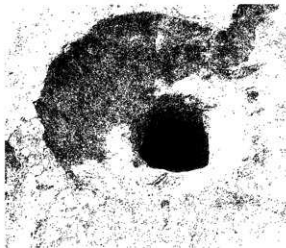
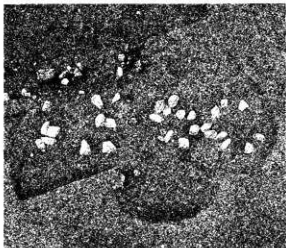
第2・3号鑿穴状遺構▼





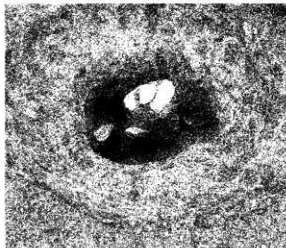
▲第288号土壤出土状况

第101号土壤砾群出土状况▼



▲第106号土壤

第106号土壤遗物出土状况▼

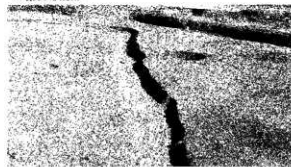


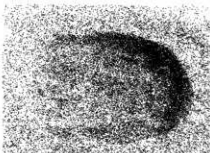
▲第18号清跡

第34・35号清跡▼



▼第36号清跡

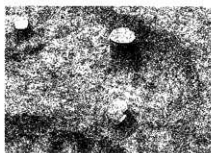




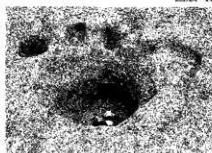
▲第283号土壤



▲第209号土壤



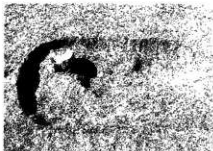
▲第105号土壤遗物出土状况



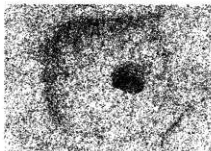
▲第5号土壤



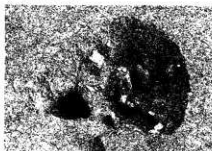
▲第292号土壤



▲第272号土壤



▲第142号土壤



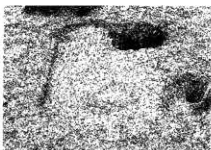
▲第42号土壤



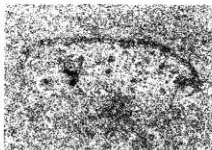
▲第293号土壤



▲第282号土壤



▲第183号土壤



▲第71号土壤



96-4



299-3



376-2



144-1



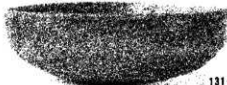
48-1



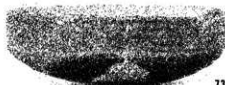
131-2



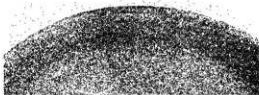
37-1



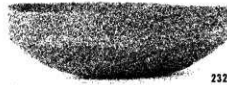
131-1



73-3



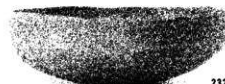
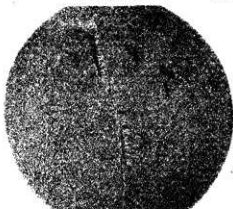
318-1



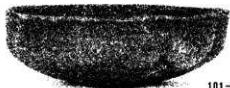
232-2



326-1



232-3



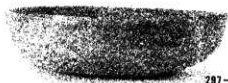
101-2



241-1



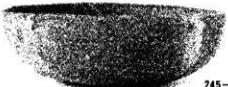
146-7



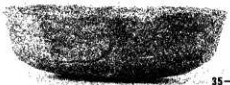
297-1



92-1



245-3



35-4



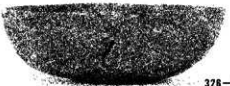
323-4



35-1



253-2



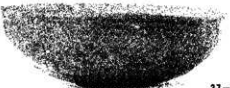
326-4



253-3



232-4



37-2



232-5



232-6



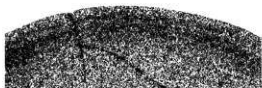
385-7



46-1



230-2



253-4



139-8



232-1



28-3



144-8



82-3



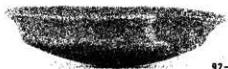
201-30



318-5



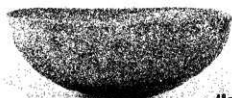
182-1



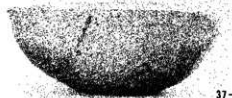
92-4



383-2



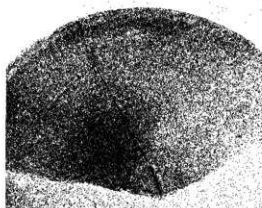
48-5



37-3



355-4



282-1



112-4



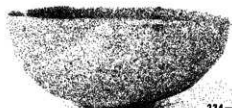
86-9



173-32



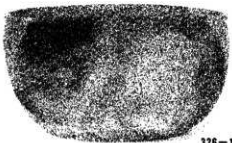
407-6



234-2



17-52



326-13





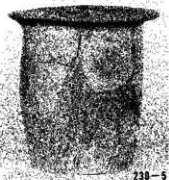
144-20



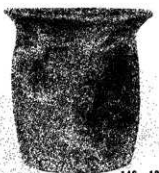
75-7



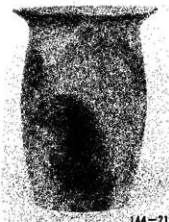
35-8



230-5



146-10



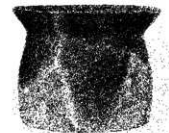
144-21



385-16



140-47



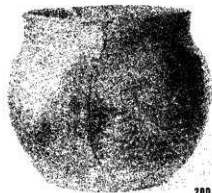
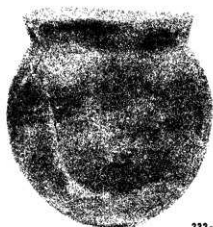
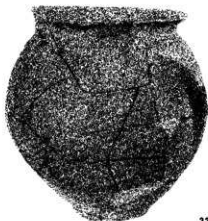
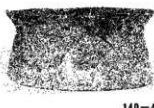
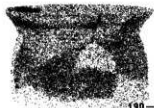
140-51

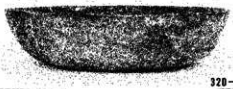
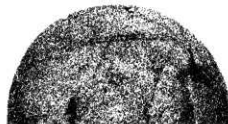
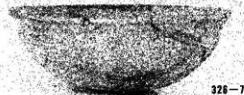
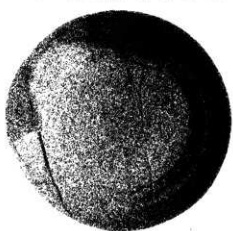


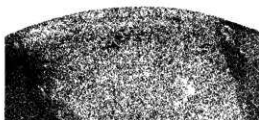
84-11



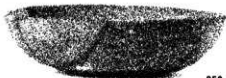
18-54



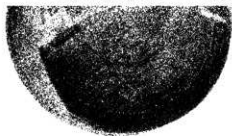




476-2



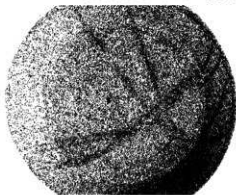
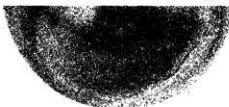
253-6



201-33



139-34



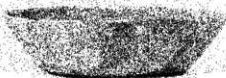
190-1



297-8



225-2



331-8