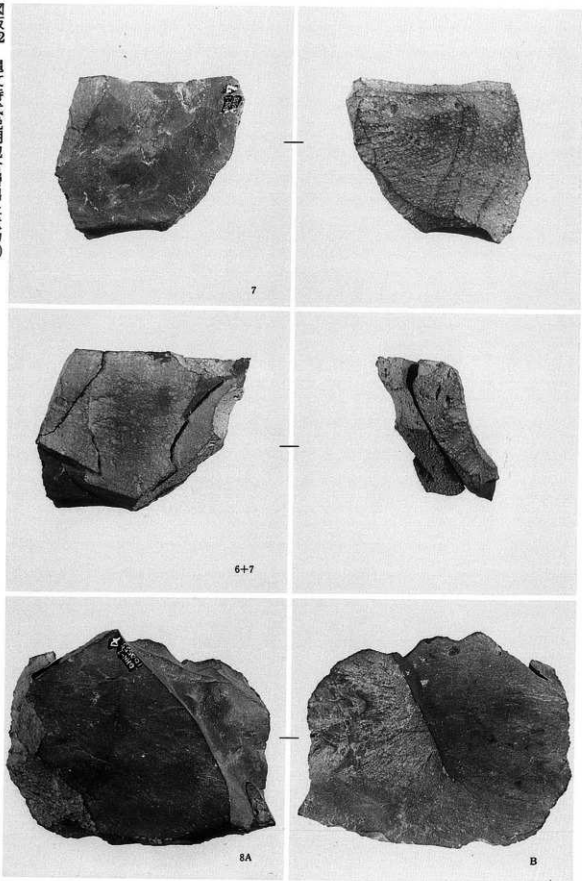
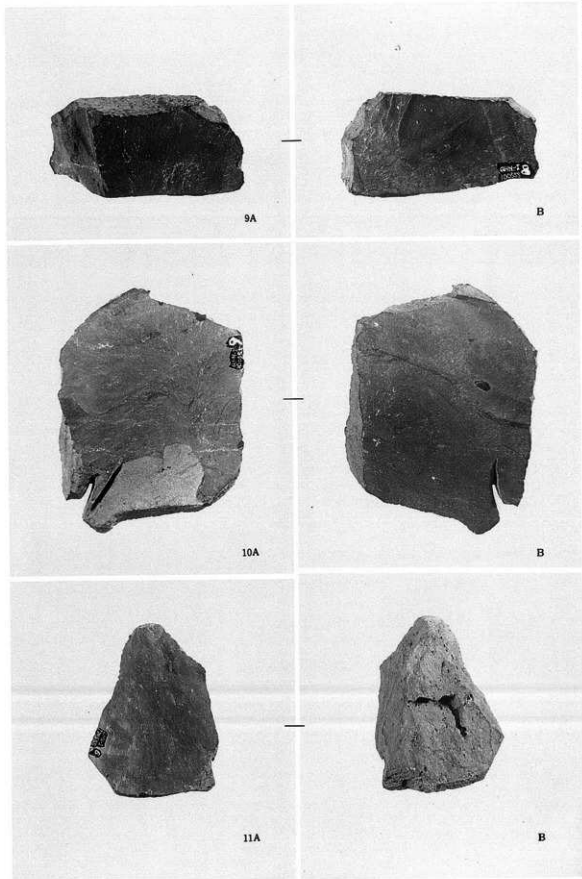
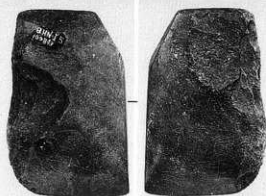


石核 (接合資料) (18-4・5、19-6)



石核（接合資料）(19-6・7)、剝片(20-8)







40-1



42-7



40-3



44-2



42-1



44-1



42-2



46-1



50-1



50-3



52-5



50-2



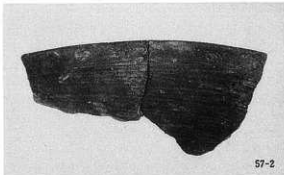
52-1



50-4



52-4



S D2001 (53-1・W1)、S D2009 (57-1・2)、S D2010 (58-1)、S D2013 (59-1)、S D2014 (60-1)



62-2



66-1



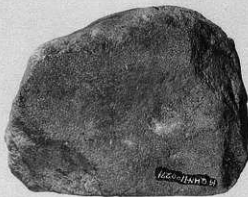
64-4



63-S1



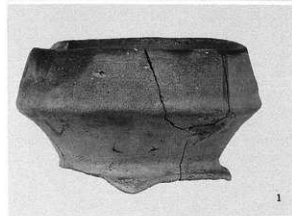
66-2



SK2029



68-S1





8



13



12



1



5



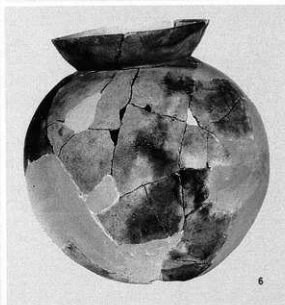
16

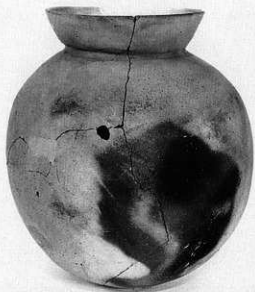


95-3



65





7



18



26



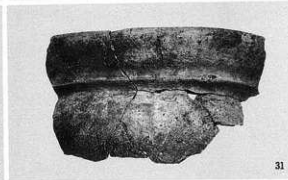
67



72



52





28



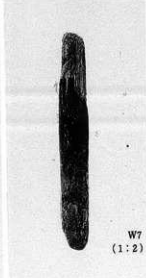
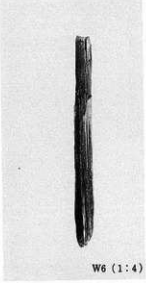
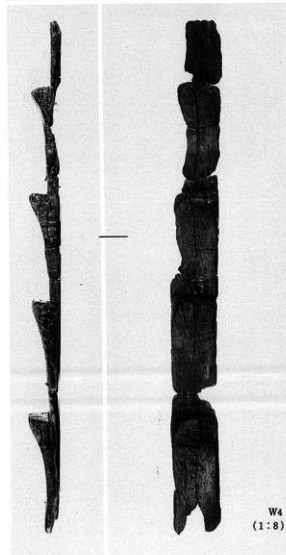
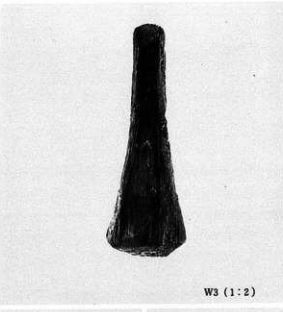
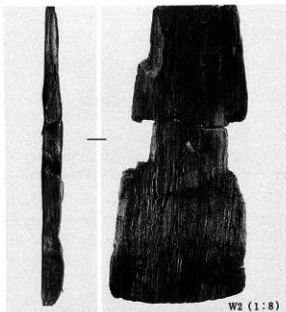
54



W1 (1:2)



W5 (1:2)





62



27



29



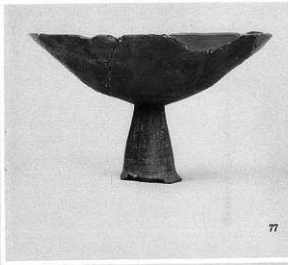
6



5



69





37



75



58



86



20



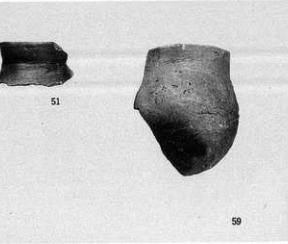
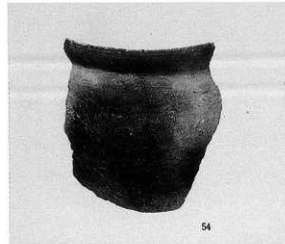
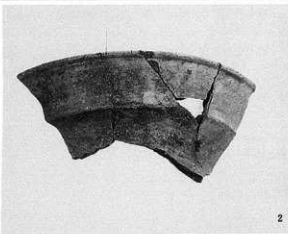
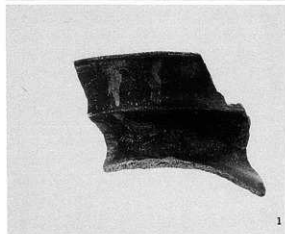
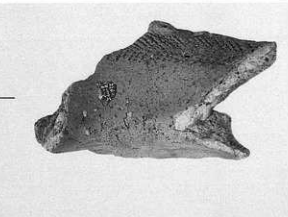
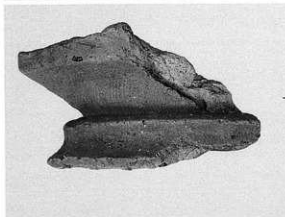
47



48



24





W10 (1:2)



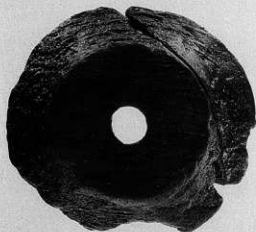
W3 (1:3)



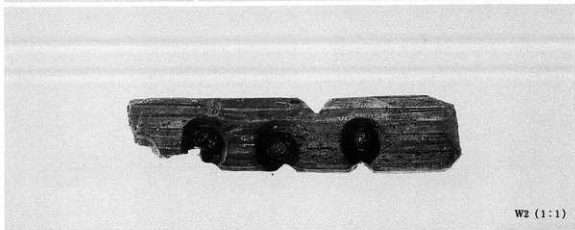
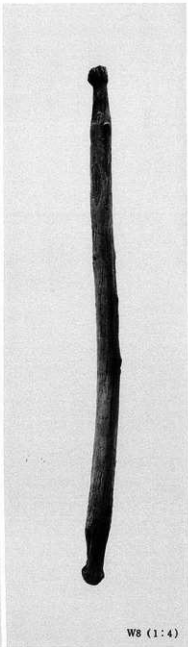
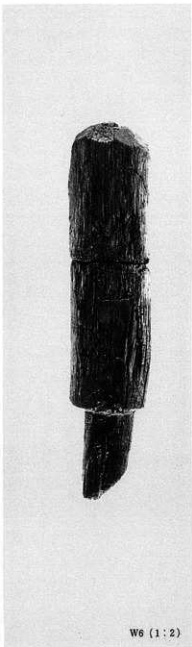
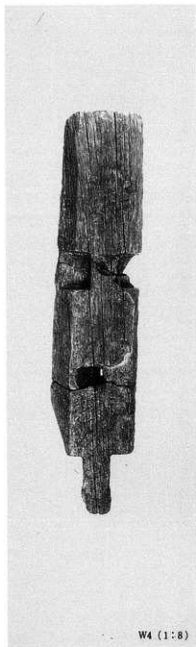
W7 (1:2)



W5 (1:3)



W1 (1:1)





3



6



19



2



108-W1 (1:4)



111-W1 (1:3)



15



8



4



5



10



11



W9 (1:2)



W3 (1:4)



W2 (1:4)



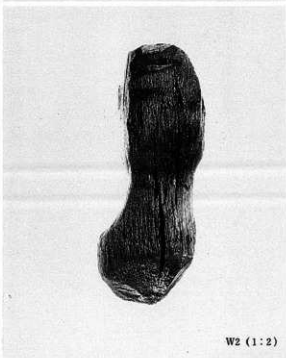
W6 (1:2)



W7 (1:2)



W8 (1:2)





W4 (1:3)



W3 (1:3)



W1 (1:3)



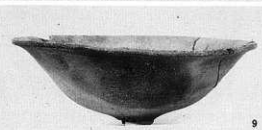
1



3



6



9



8



12



15



13



W1 (1:8)



14



W2 (1:4)



1



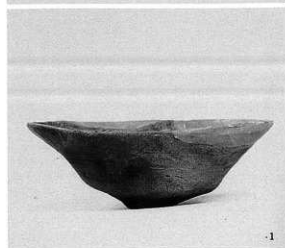
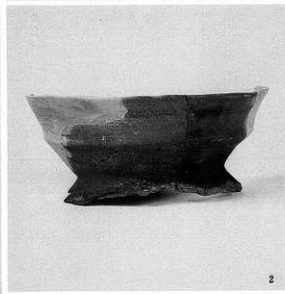
2



5



4

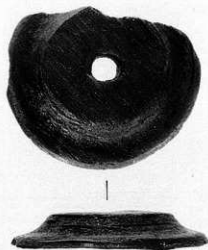


SD4010 (116-5・7・8)、SD4012 (119-1)、SD4011 (119-2)、SD4016 (119-5)





1



W3 (1:1)



4



16



W1 (1:8)



10



8



2



11



1



9



7



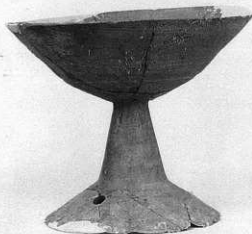
17



13



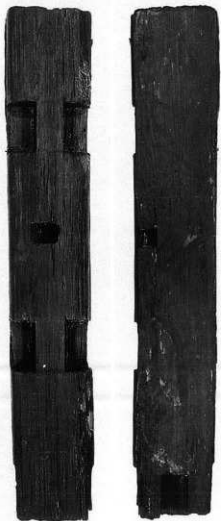
14



15



12



W1 (1:8)



137-1



140-1



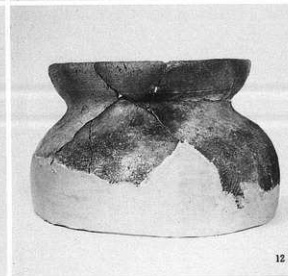
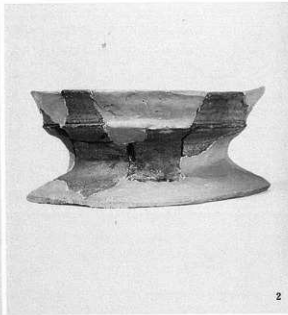
140-4

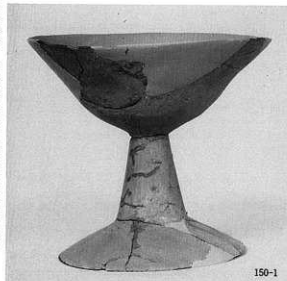


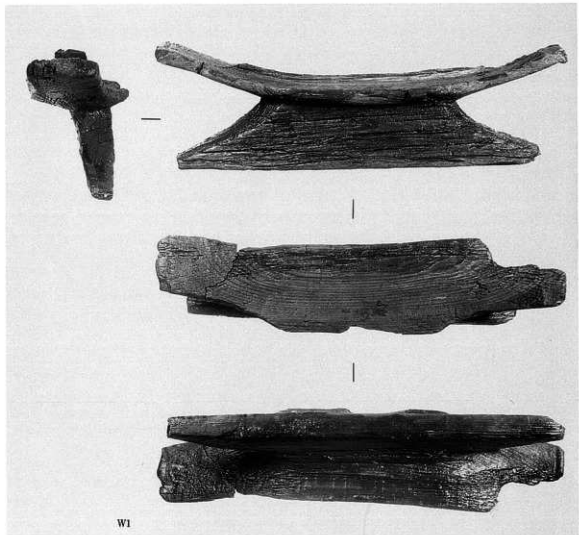
140-5



142-1







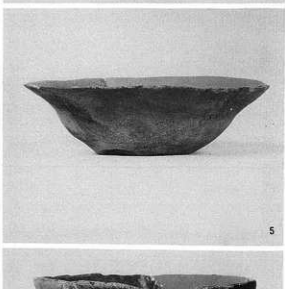
W1



2



1





1



7



5



8



6



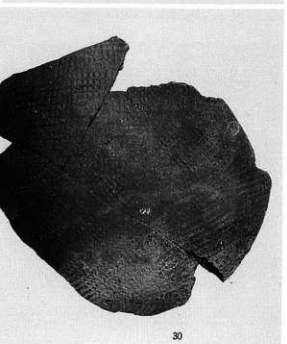
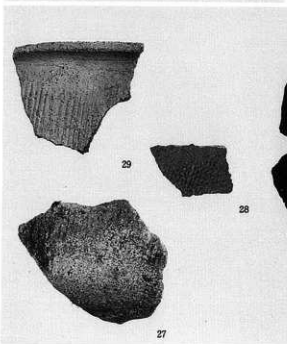
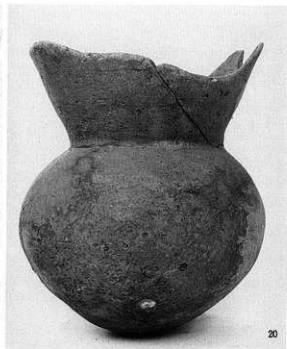
11

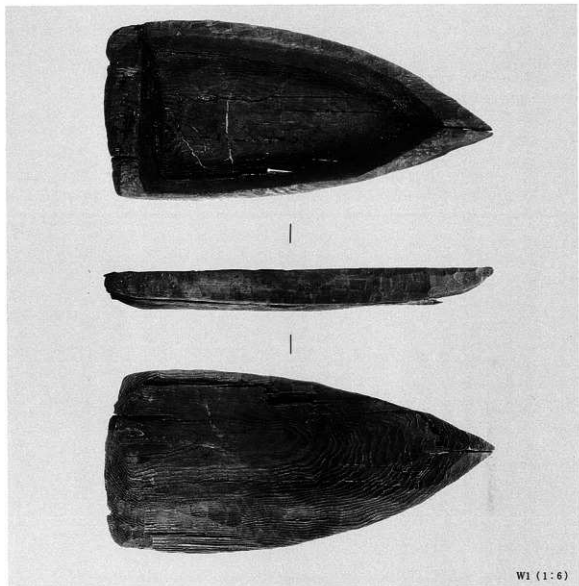


18



19

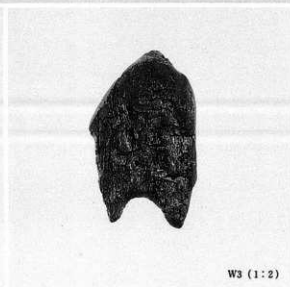




W1 (1:6)



W2 (1:2)



W3 (1:2)



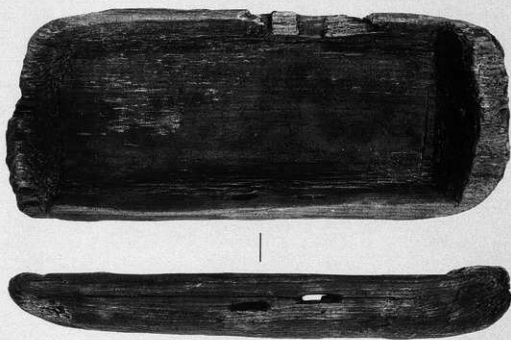
W11 (1:6)



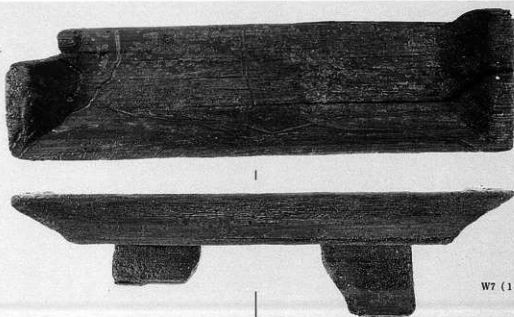
W4 (1:4)



W10 (1:)



W5 (1:3)



W7 (1:3)

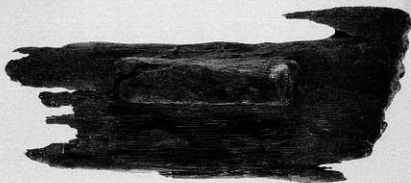




W10(1:5)



W2(1:8)



W12 (1:3)



W1 (1:6)



W3 (1:4)



2



1



7



4





14



15



19



17



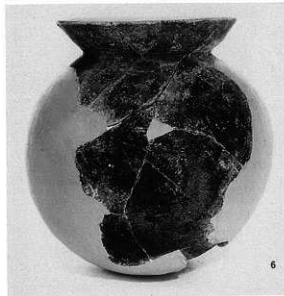
20



21









15



17



18



1

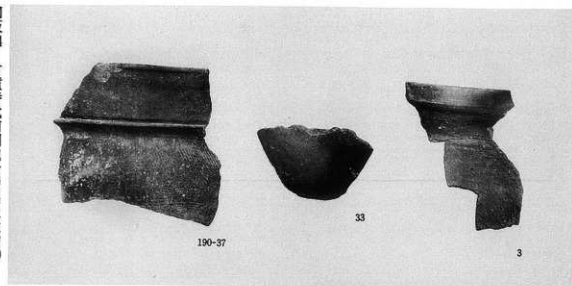


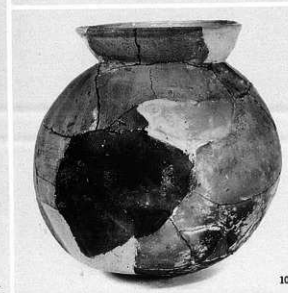
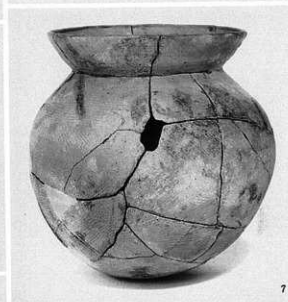
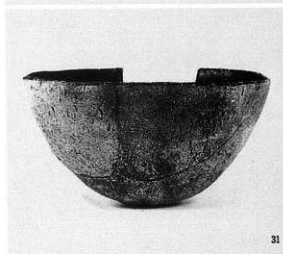
9



21







包含層上面C13トレンチ (176-13・177-20・31)、S Q4001 (179-7・10・11)



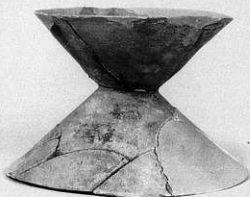
12



14



17



21



18



16



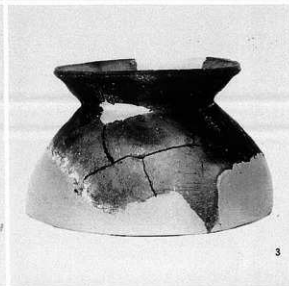
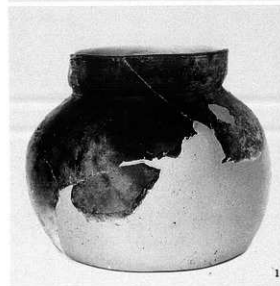
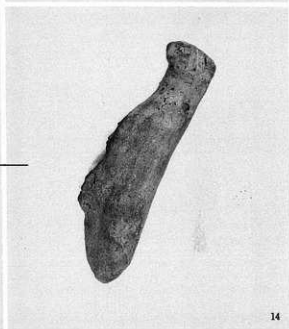
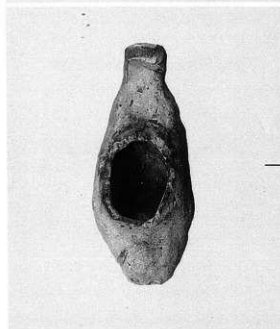
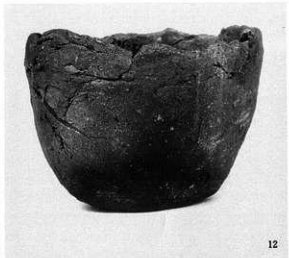
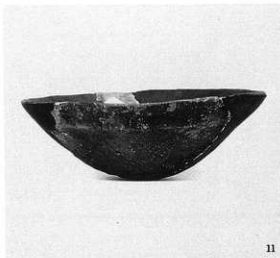
2

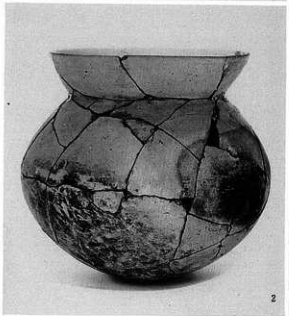
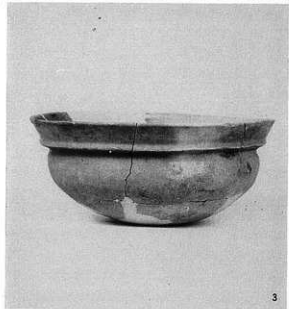
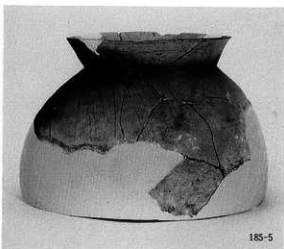


3





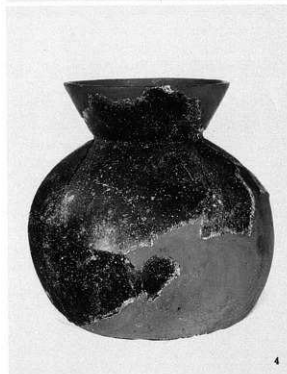




S Q4004 (185-5・6)、S Q4005 (187-3)、各トレンチ包含層 (188-1・2・5)









27



34



29



63



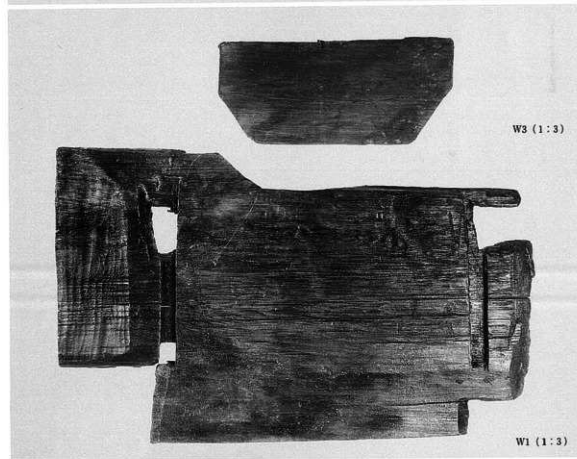
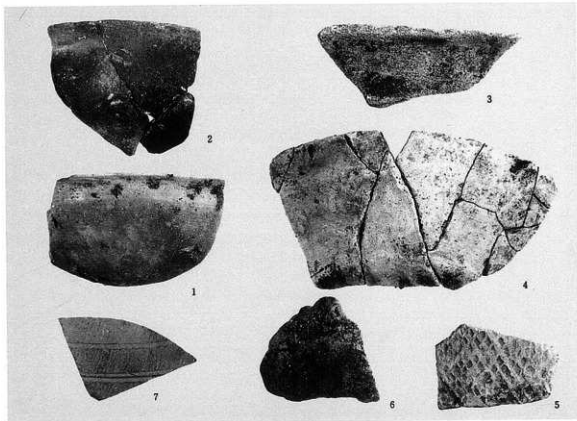
36



51



67

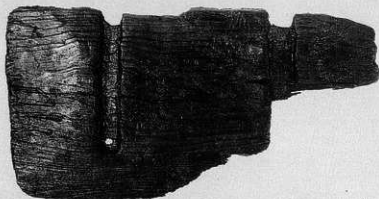




W4 (1:3)



W5 (1:3)



W2 (1:3)





13



21



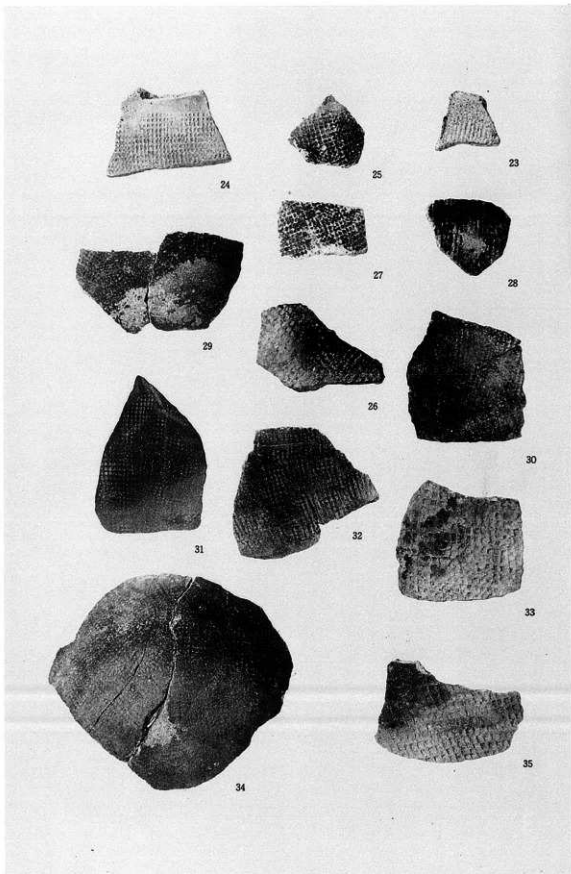
19



22



20





2



3



4



15



13



1



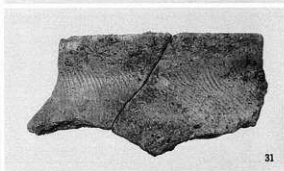
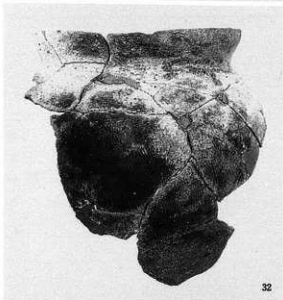
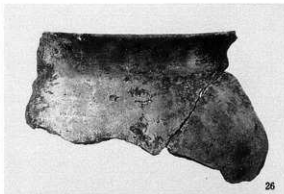
18



24



20





46



53



47



54



48



57



49



58



51



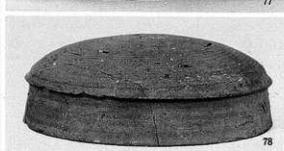
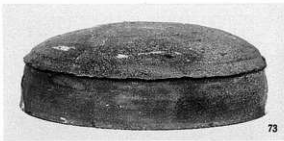
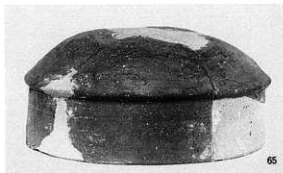
59

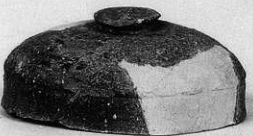


52



62







104



97



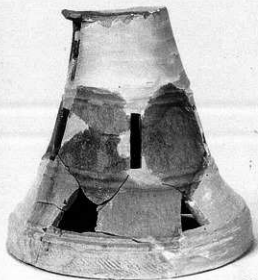
103



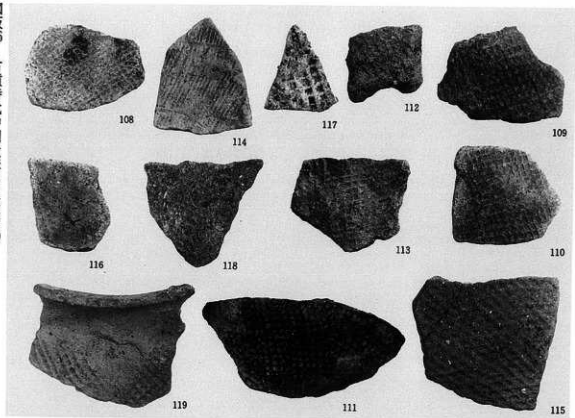
95



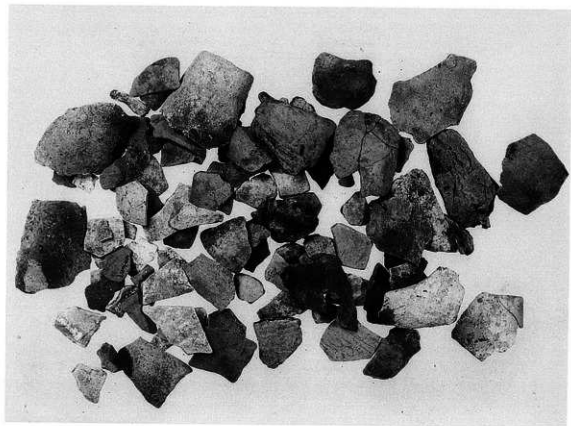
94



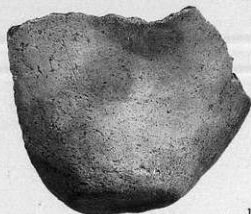
100



S Q5001出土韓式土器



S Q5001出土製塩土器





38



39



44



46



47



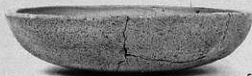
48



51



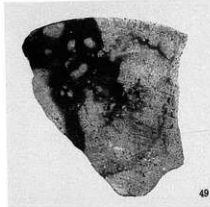
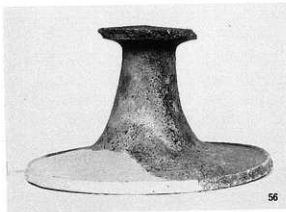
52



54



55





61



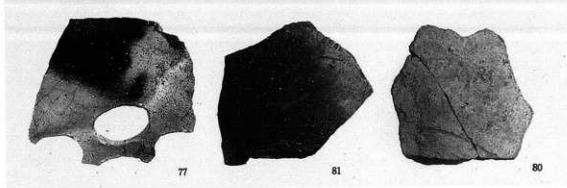
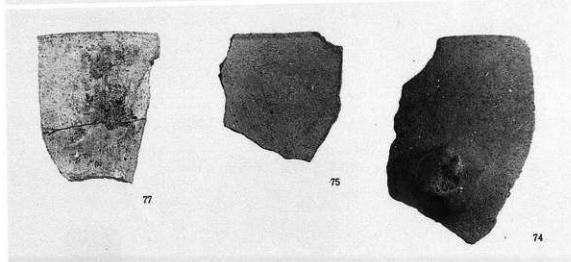
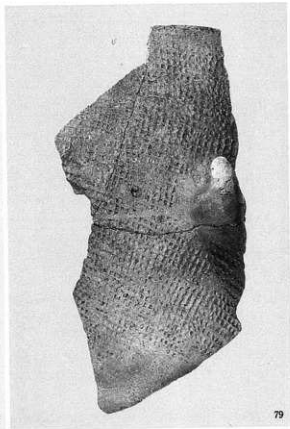
66

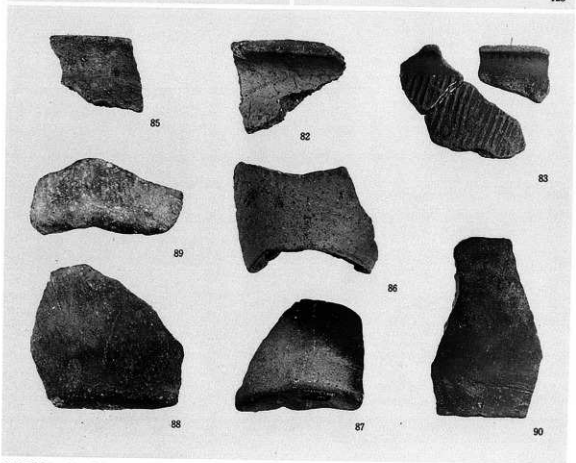
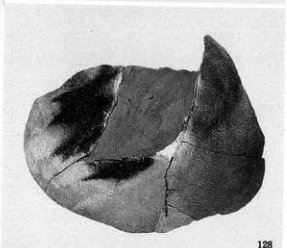


65



69







99



95



92



93



94



100



97



98



103



104



105



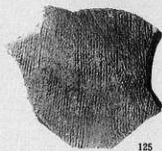
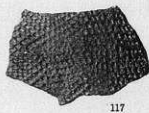
106

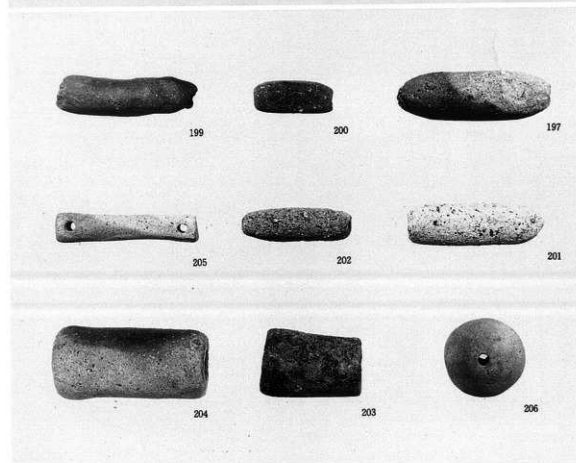
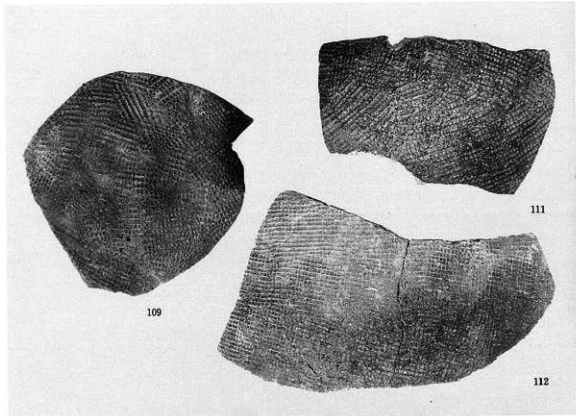


107



108







130



131



132



134



136



138



139



140



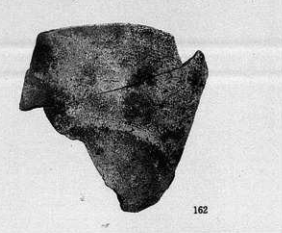
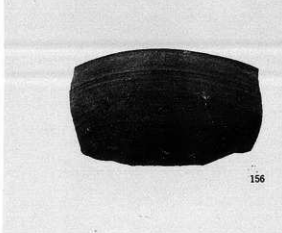
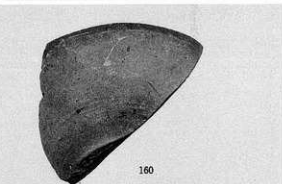
141



144



147





157



172



158



180



167



179



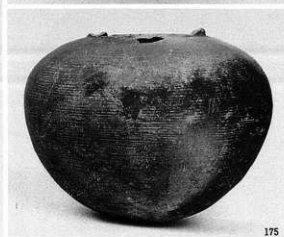
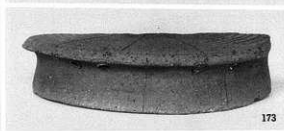
171



177



178

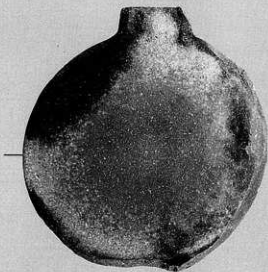




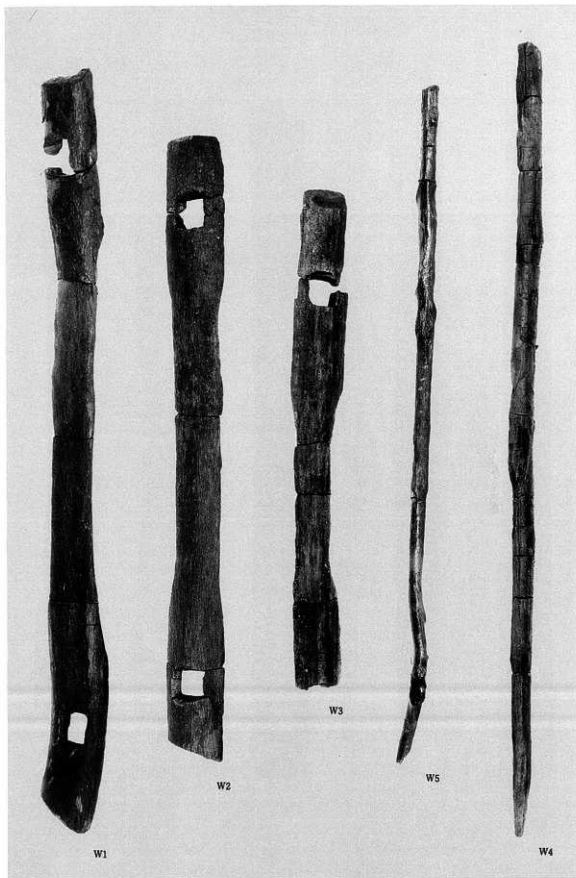
W1



W2



S1



W1

W2

W3

W5

W4



W1



W2



W3



W5





8



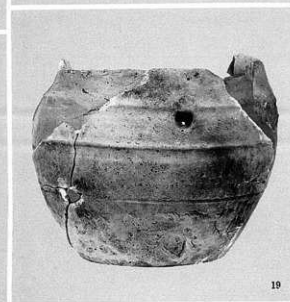
10

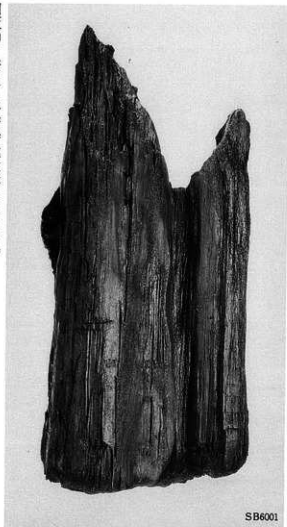


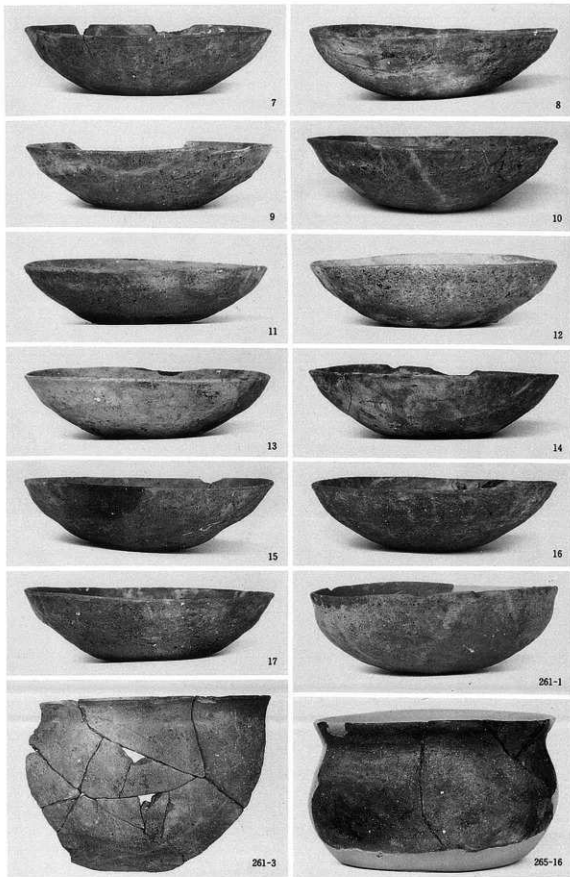
11



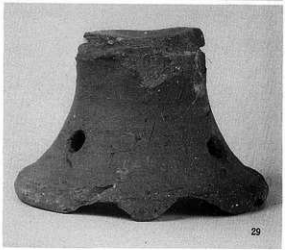
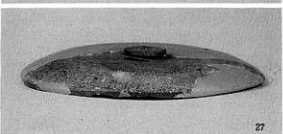
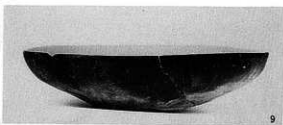
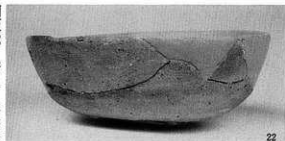
12

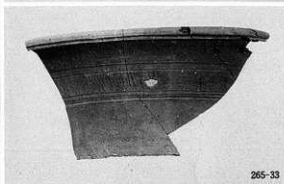






S D6001 (260-7~17)、S D6002 (261-1・3)、S D6003 (265-16)







1



2

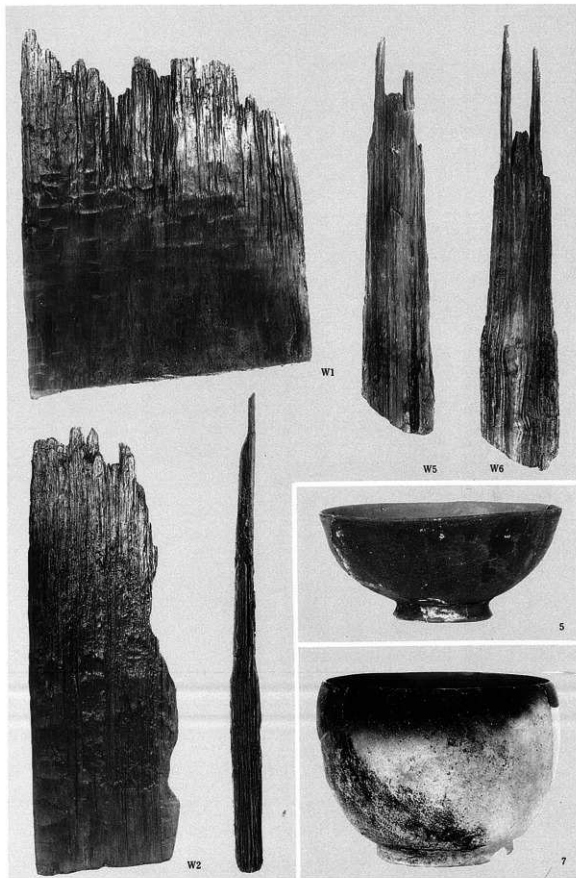


W1

W2

W3

W4



S E 6003 (273-W 5・W 6)、S E 6004 (276-W 1・W 2)、S E 6005 (278-5・7)



282-2



282-3



283-2



283-1



285-3



285-13



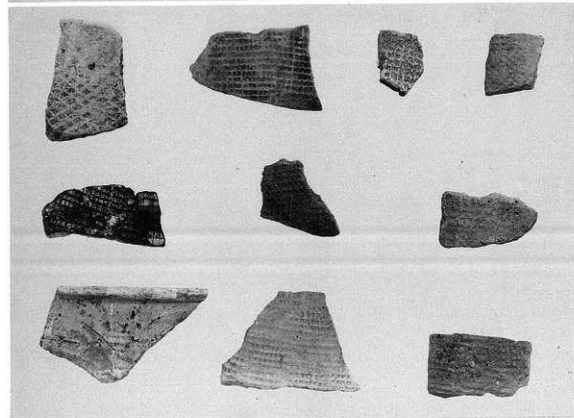
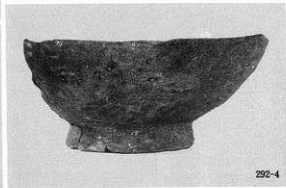
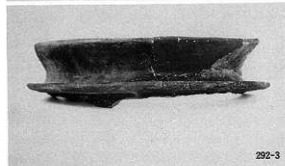
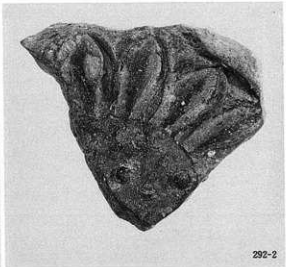
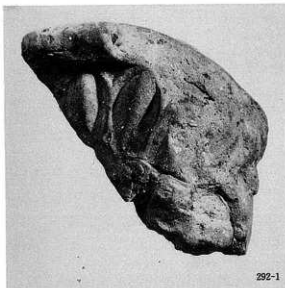
285-1

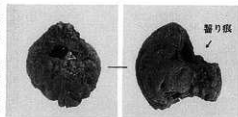


287-5



287-10





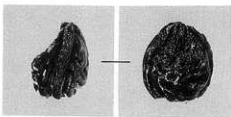
SK4002出土 モモ核 (×1)



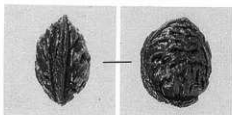
SD4002出土 モモ核 (×1)



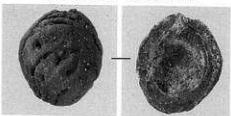
SD4002出土 モモ核半分 (×1)



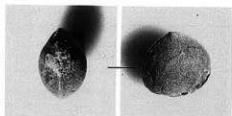
SK4011出土 モモ核 (×1)



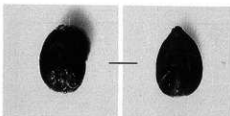
SD4004出土 モモ核 (×1)



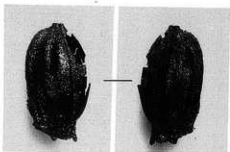
SD4002出土 モモ核半分 (×1)



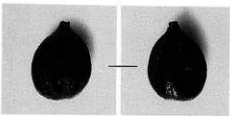
SK4002出土 カナムグラ種子 (×6)



SD4004出土 ブドウ属種子小型 (×6)



SD4002出土 榧 (×6)



SD4004出土 ブドウ属種子 (×6)

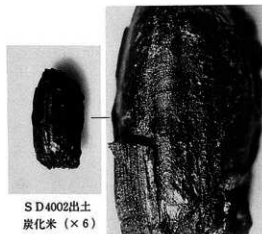


SD4002出土 炭化米 (×6)



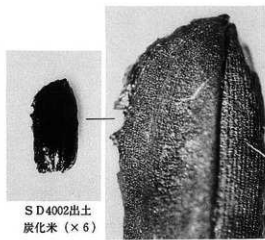
SK4002出土
炭化米 (×6)

拡大 (×10)



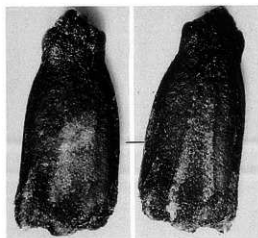
SD4002出土
炭化米 (×6)

籾殻付着部分 (×20)



SD4002出土
炭化米 (×6)

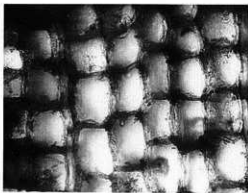
籾殻付着部分 (×20)



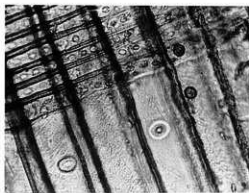
SD4002出土 ヒョウタン仲間の種子 (×7)



SK4002出土 マクワウリの仲間の種子 (×7)



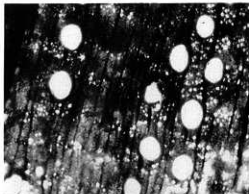
163-W1 スギ 木口面 (×100)



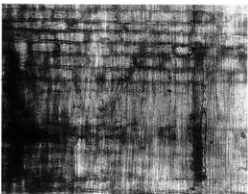
スギ 柁目面 (×100)



スギ 板目面 (×100)



166-W11 アカガシ亜属 木口面 (×20)



アカガシ亜属 柁目面 (×50)



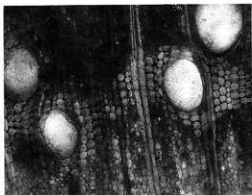
アカガシ亜属 板目面 (×50)



No.2082 コウヤマキ 木口面 (×50)



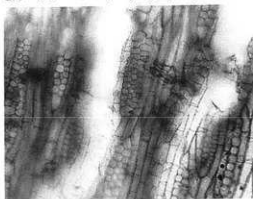
コウヤマキ 柁目面 (×100)



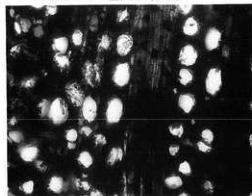
273-W1 ムクノキ 木口面 (×50)



ムクノキ 柁目面 (×50)



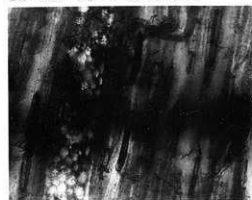
モッコク 板目面 (×50)



246-W11 モッコク 木口面 (×50)



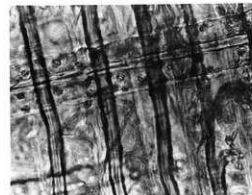
モッコク 柁目面 (×50)



ムクノキ 板目面 (×50)



246-W12 ヒノキ 木口面 (×50)



ヒノキ 柁目面 (×200)

7

2

