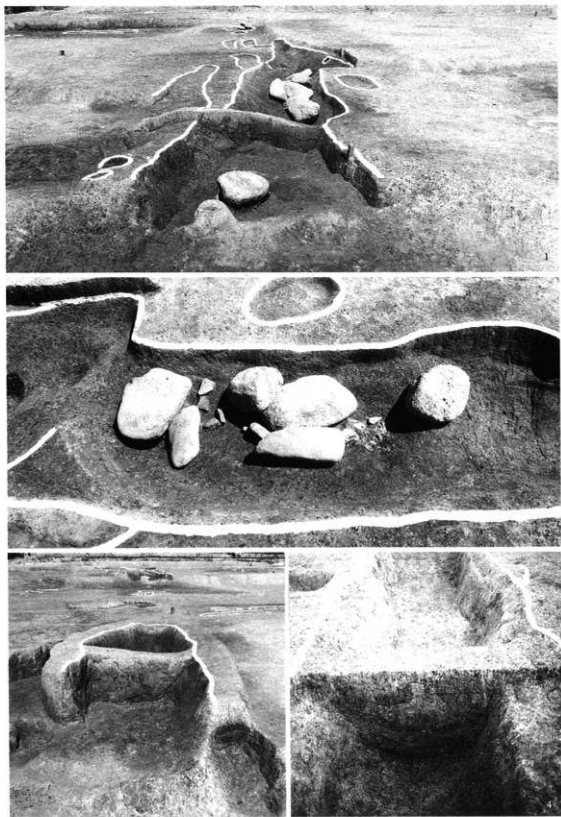
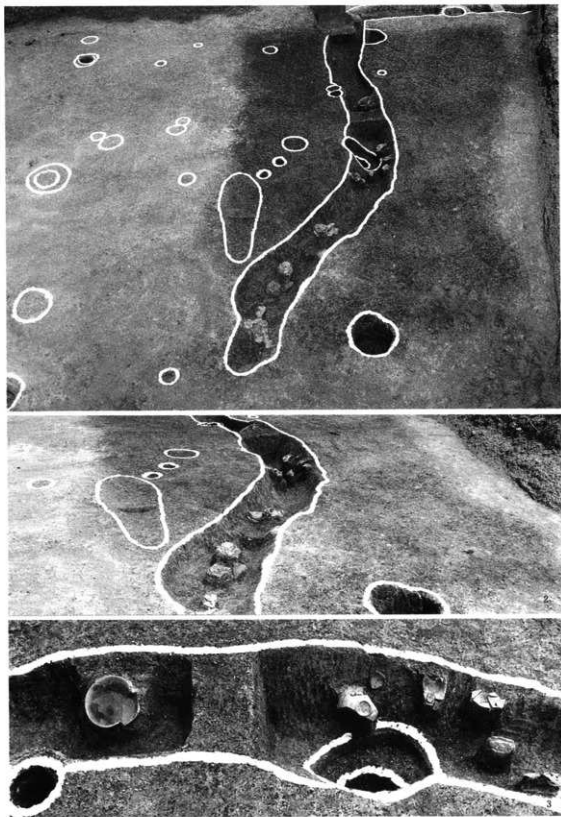


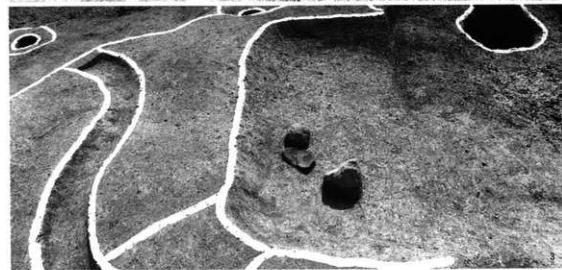
1. 60-OZとビット群 (北から)    3. 55・56-OO・78-OS (東から)    5. 59-OO (北から)  
2. 62-OSとビット群 (西から)    4. 56-OO遺物出土状況 (東から)    6. 58-OO (北から)



1. 52-OS (西から)    3. 52-OS 西端部 (西から)  
2. 同上 集石 (南から)    4. 51-OS 土層 (南から)



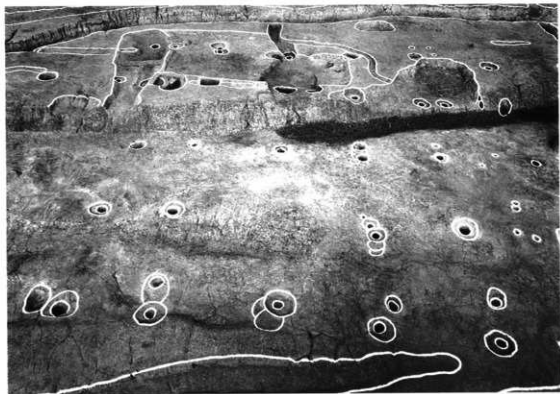
1. 45-OS (西から) 2. 同 遺物出土状況 (西から) 3. 同 遺物出土状況 (南から)



1. 47-00 (東から) 2. 50-00土層 (南から) 3. 48-00遺物出土状況 (東から)



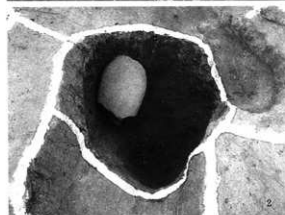
1. 54-OW土層(北西から) 2. 同 下層遺物出土状況(西から) 3. 同 細部



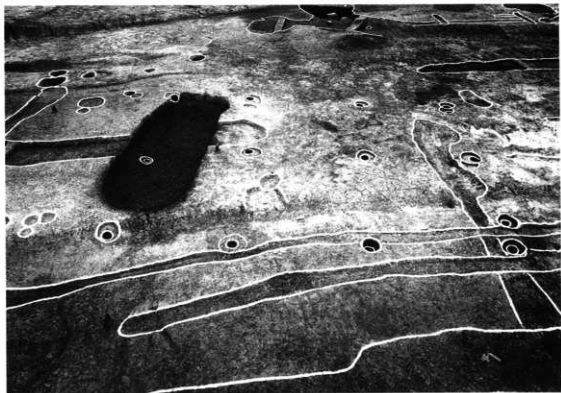
44-OB (西から)



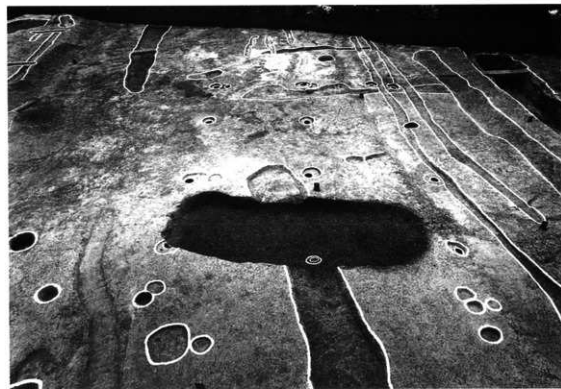
同上 (北から)



1. 43・44-OB (北か6) 2～5. 44-OB柱穴



53-OB (東から)



同上 (北から)

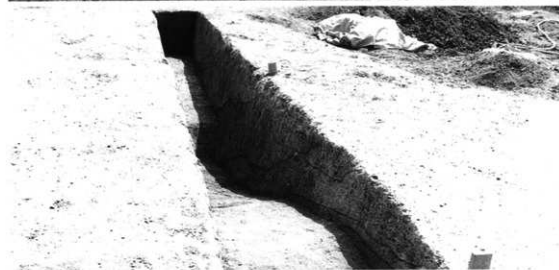
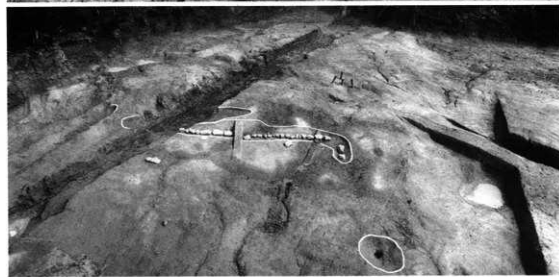




1. 全景

2. トレンチ土層 (a-a') 整地の状況 (北から)

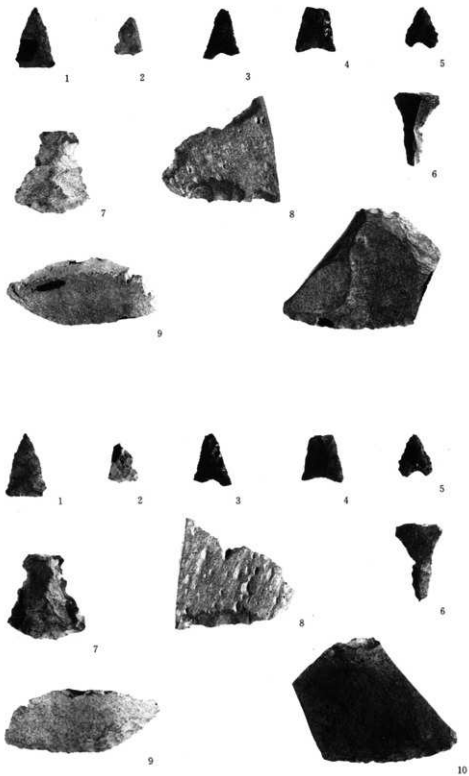
3. トレンチ土層 (b-b') 整地の状況 (東から)



1. 全景 (南から)    2. 80-OX (西から)    3. B-B'トレンチ土層・整地の状況 (東から)



1. 80-OXと礎石（西から） 3. 80-OX遺物出土状況（西から）  
2. 同上（北から）





11



13



12



14



15



19



21



16



18



20



17



24



23



22



37



25



27



26



30



38



28



29



39



31



32



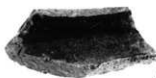
35

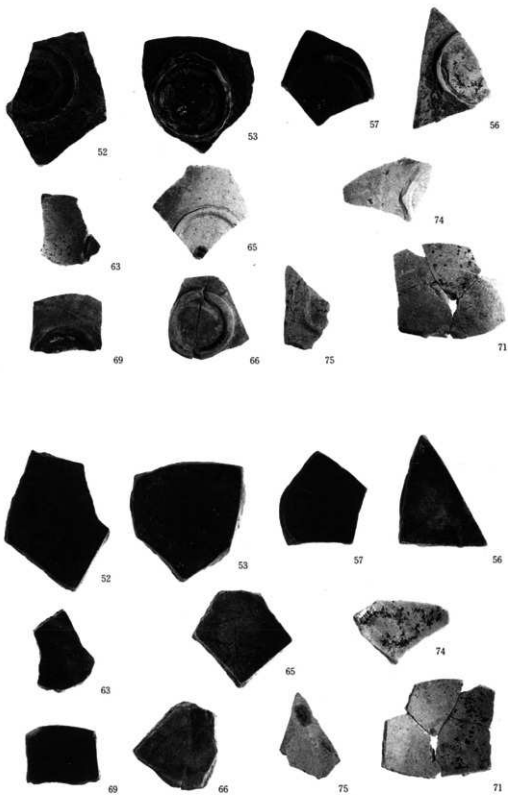


34



36









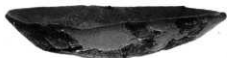
49



81



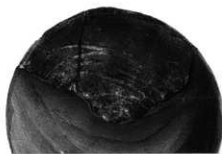
85



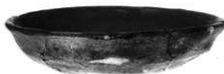
88



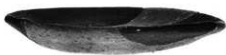
89



1



96



92



99



103



105



108



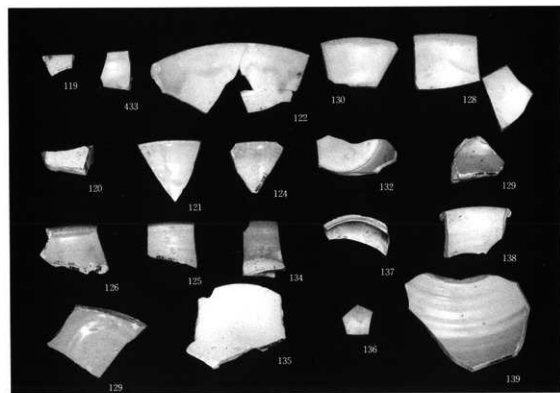
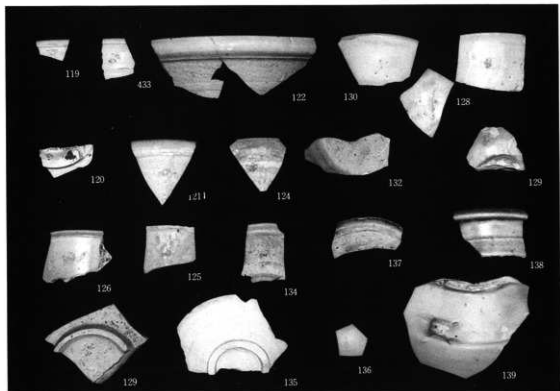
109

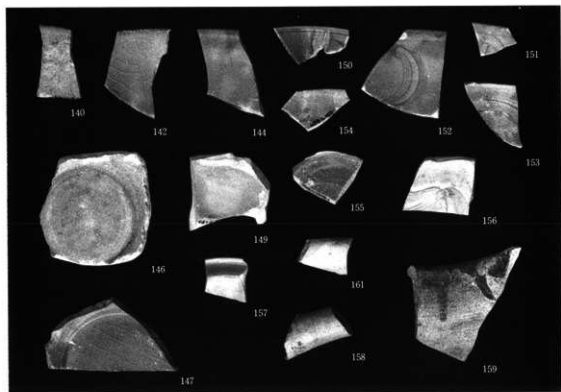
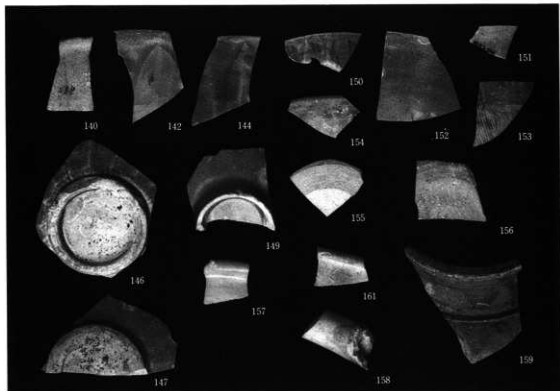


112



117









187



188



189



191



193



197



198



199



200



187



188



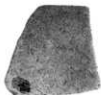
189



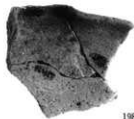
191



193



197



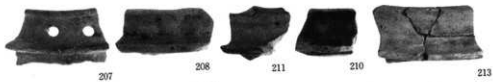
198



199



200





202



204



203



205



206



225



226



229



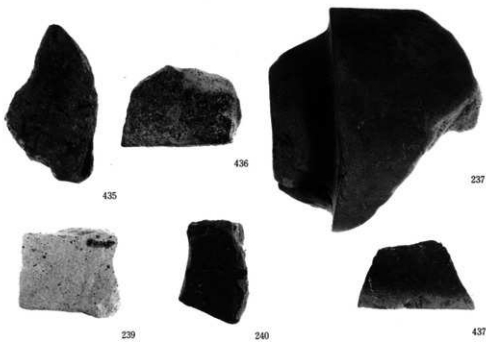
227



230



232





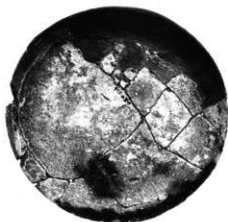


245

246



247



244



248

249

250



256



252



254



251



255



261



267



266



271



274



273



270



283



285



334



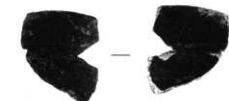
335



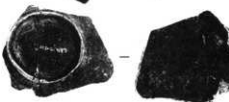
336



337



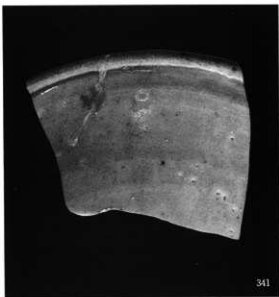
339



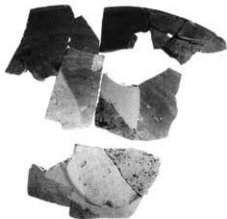
340



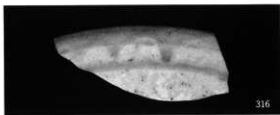
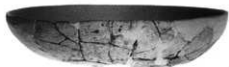
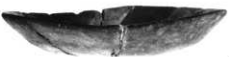
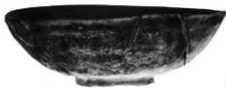
287



341



342



301

299

309

311

314

315

316

290

293

294

296

298



404



405



406



317



322



318



324



319



327



325



329



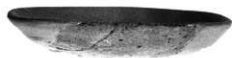
330



385



381



383



397



395



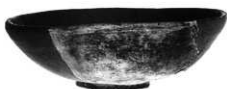
400



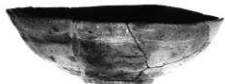
403



412



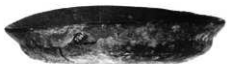
375



376



377



394



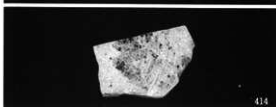
396



389



409



414



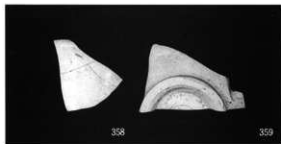
343



344



345



358

359



362



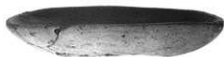
363



347



350



352



354



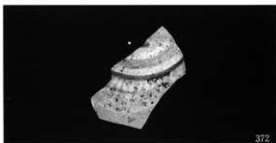
355



356



360



372





277



278



279



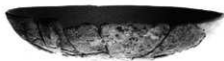
413



420



422



423



424

(財)大阪府埋蔵文化財協会調査報告書 第22輯

近畿自動車道和歌山線建設に伴う

# 山 直 中 遺 跡

—発掘調査報告書—

昭和63年3月31日

編集・発行 財団法人 大阪府埋蔵文化財協会  
大阪市東区谷町2丁目36番地大手前ウサミビル

印刷 株式会社 中島弘文堂印刷所

