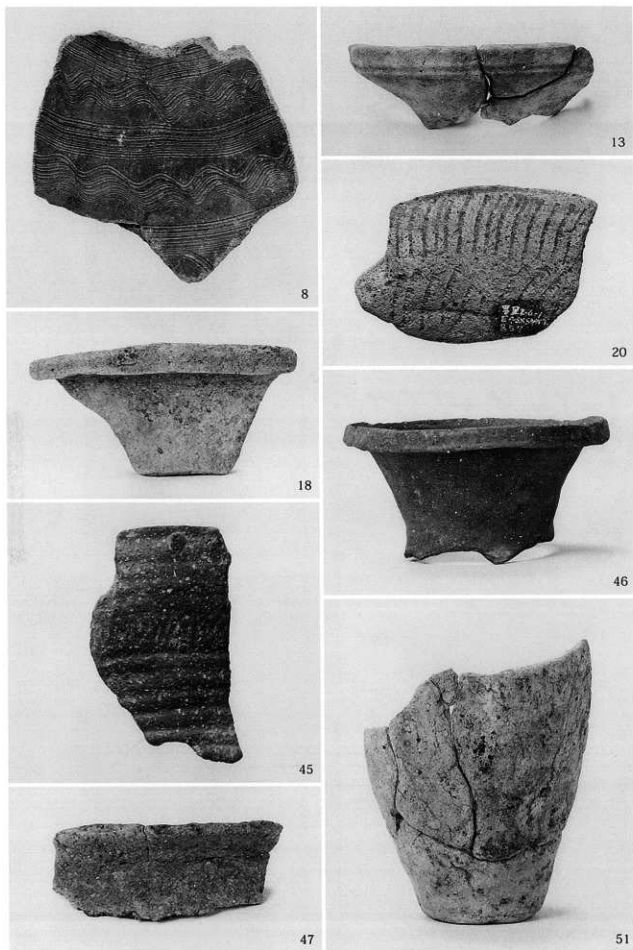
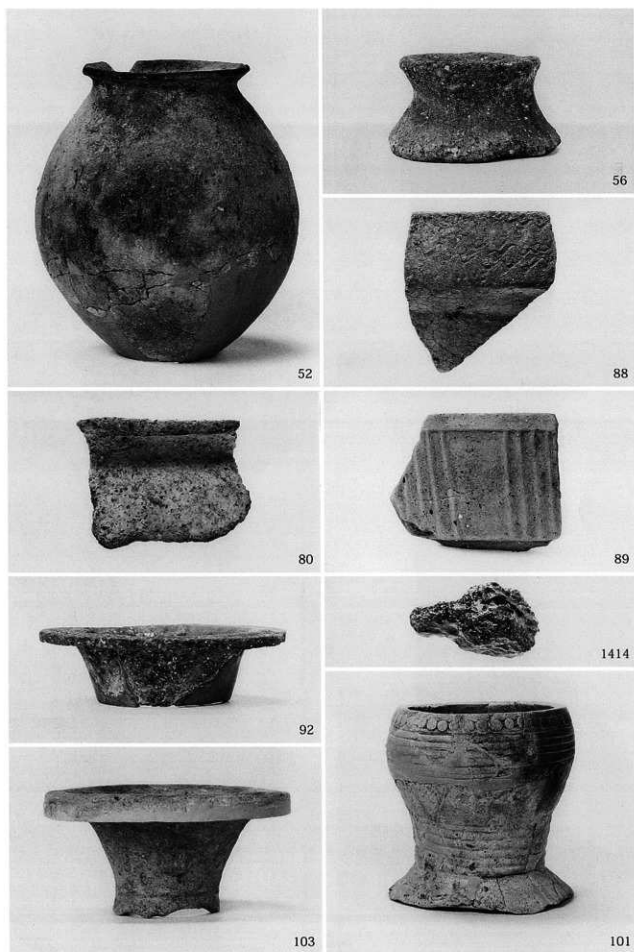


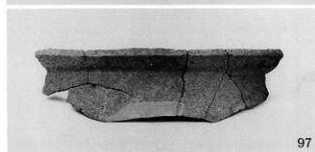
縄文土器（中期末、後期、晩期）



竪穴住居出土弥生土器 (竪穴住居 1、2、3、4)



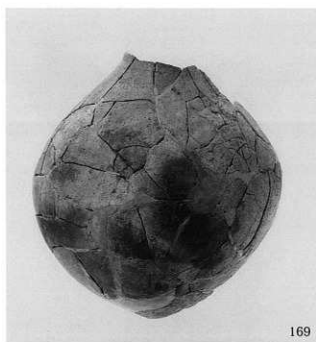
雙穴住居出土弥生土器 (雙穴住居 5・6・7、12、13、16、17)、雙穴住居 17 出土鉄製品



竪穴住居出土弥生土器 (竪穴住居 17、20、21、24)、竪穴住居 22・23 出土鉄製品



整穴住居出土弥生土器 (整穴住居 25、27)



169



170



180



182

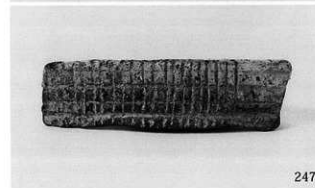
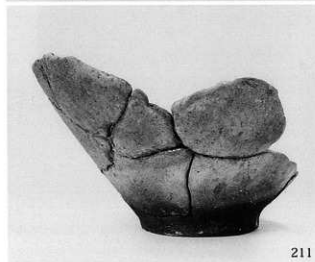
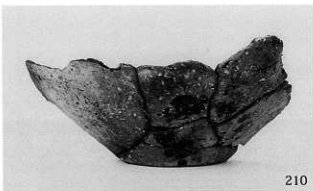
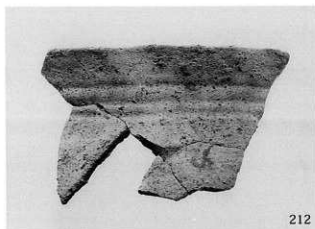


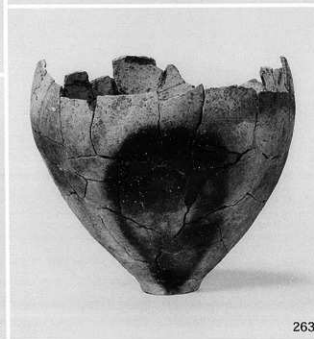
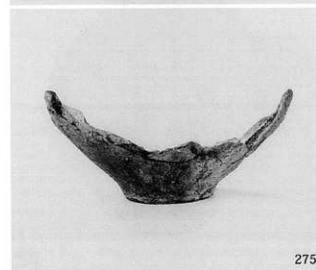
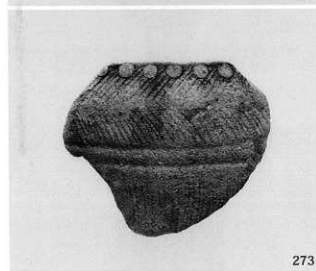
181



184

竪穴住居出土弥生土器 (竪穴住居 27、28・29・30、31)









282



288



297



304



312



298

土坑出土弥生土器 (3)、溝出土弥生土器 (1)



319



328



332



305



330



333



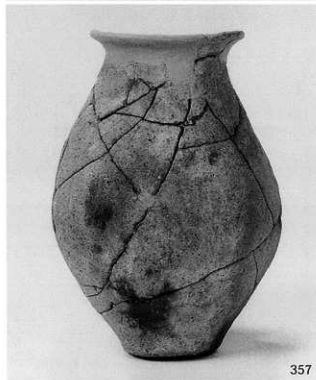
342



351



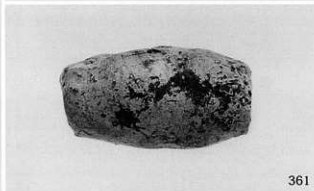
354



357



359



361



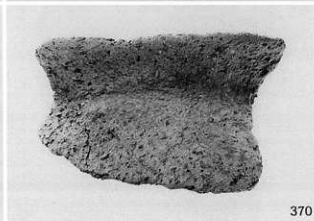
368



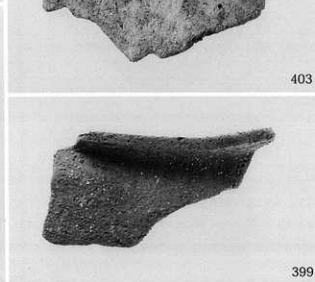
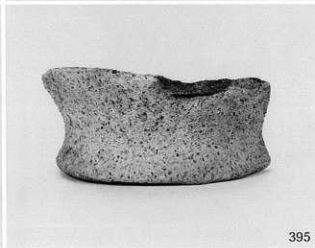
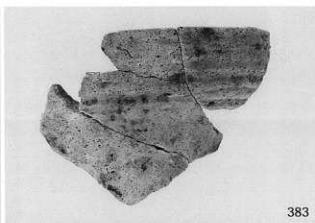
1416



374



370



大溝 1 出土弥生土器 (2)





466



469



470



479



482



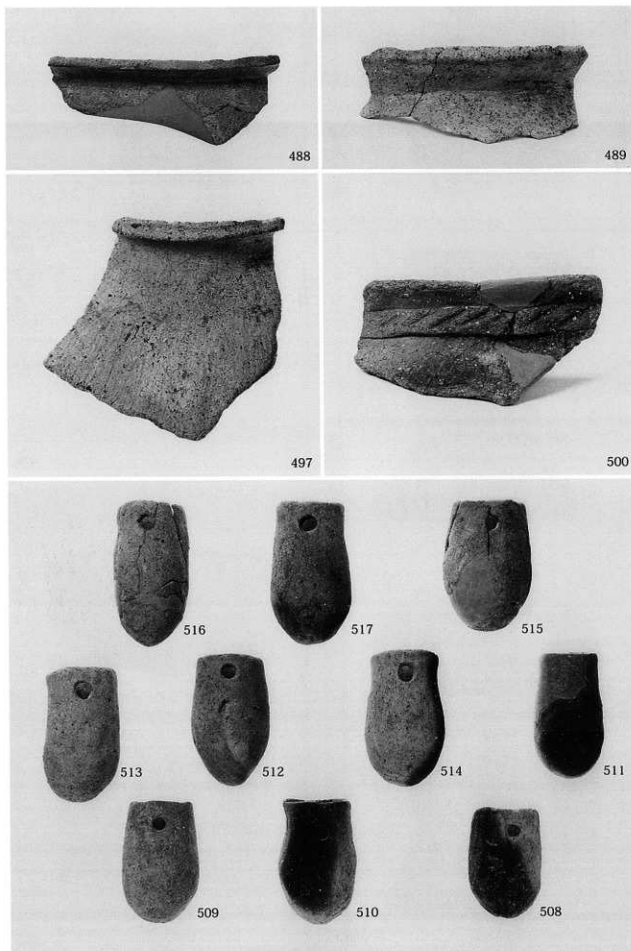
481



476



485

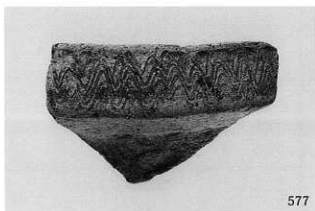


大溝1出土弥生土器 (5)





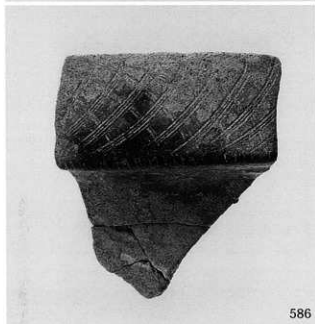




577



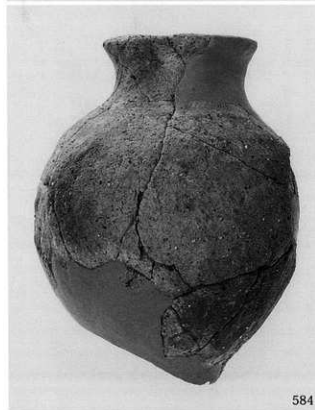
578



586



587



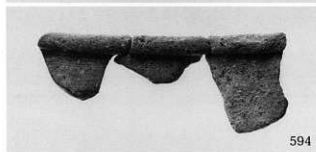
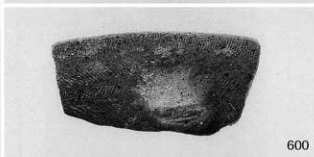
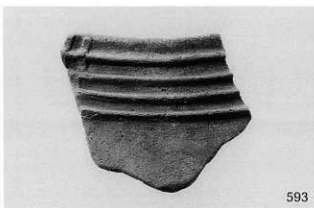
584

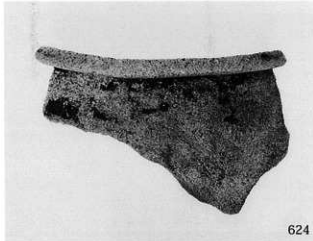
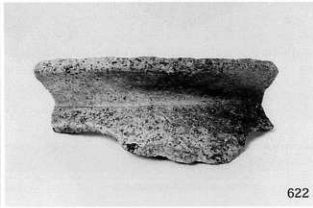
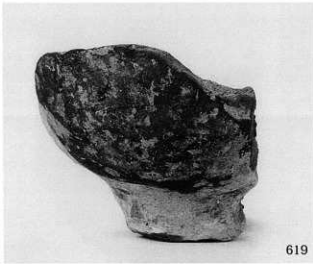
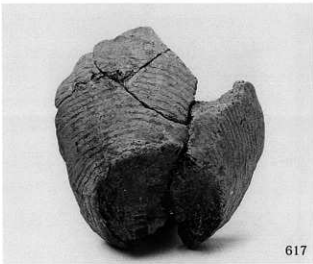


590

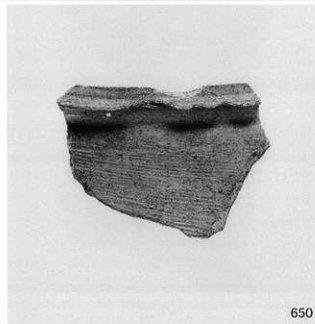
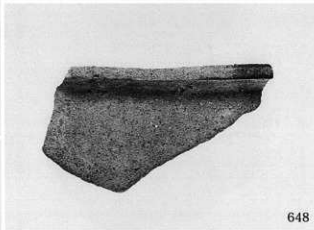
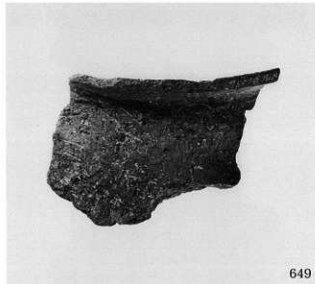


591



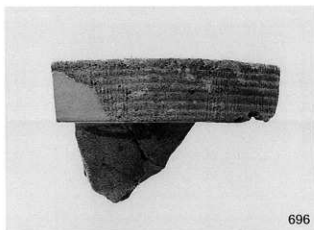


大溝 1 出土弥生土器 (10)





大溝 1 出土弥生土器 (12)



696



697



702



700



704



709



714



715



718



719



720



721

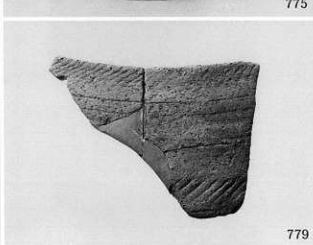


725



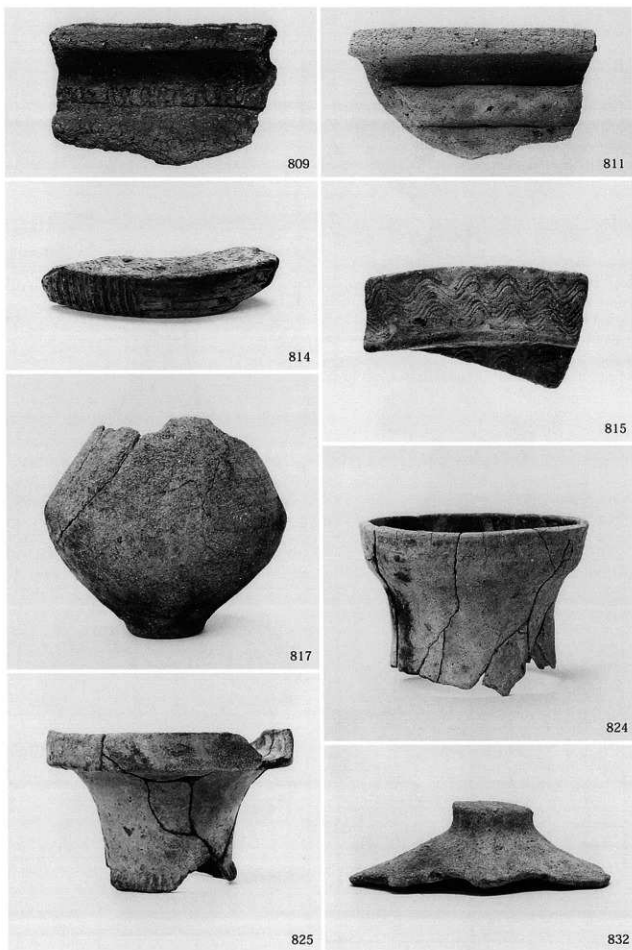
722







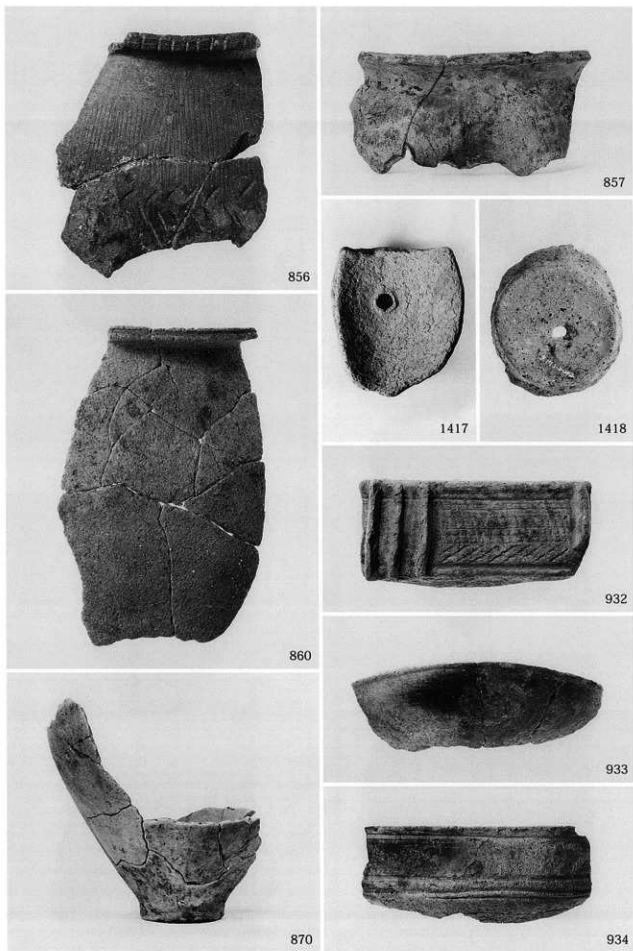
大溝3出土弥生土器(2)



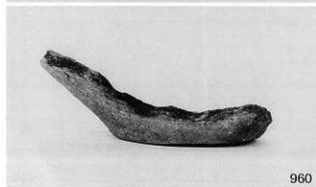
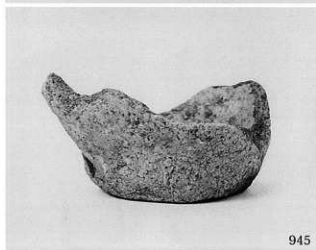
大溝3出土弥生土器 (3)



大溝 3 出土弥生土器 (4)

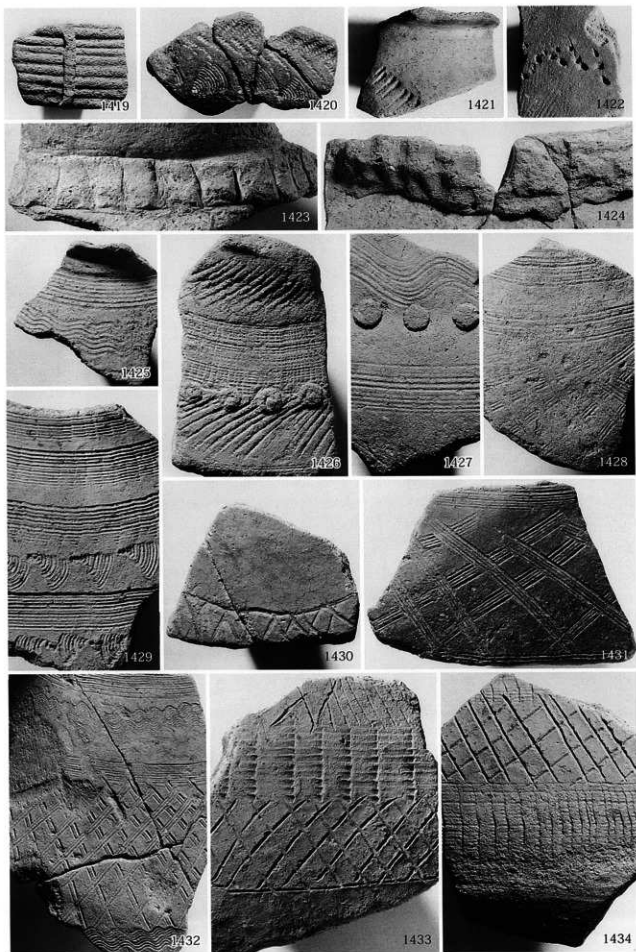


大溝 3 出土弥生土器 (5)、大溝 4 出土弥生土器 (1)

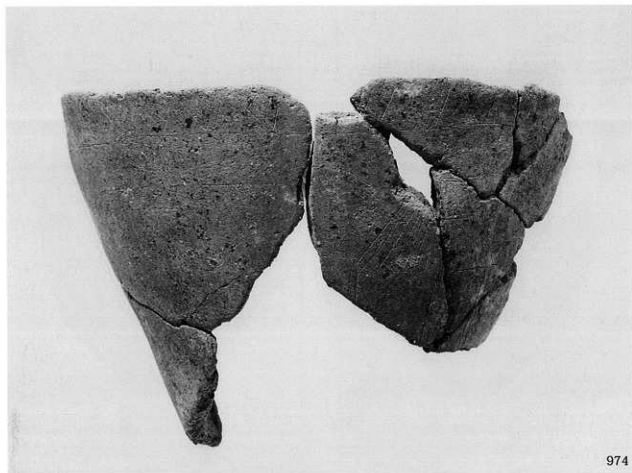


大溝4出土弥生土器 (2)

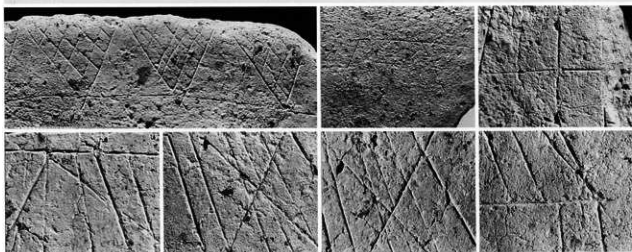
図版 60 弥生時代 遺物 (30)



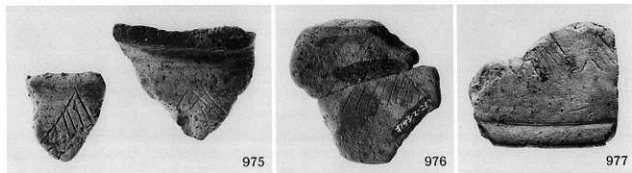
大溝 1 出土弥生土器の文様



974



大溝 1 出土絵画土器、文様の細部



975

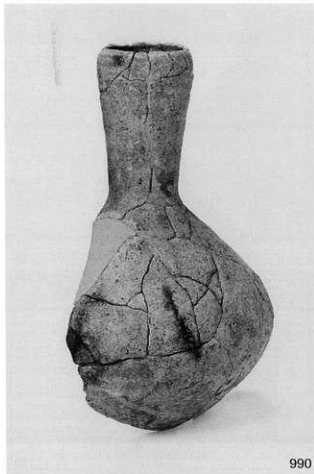
976

977

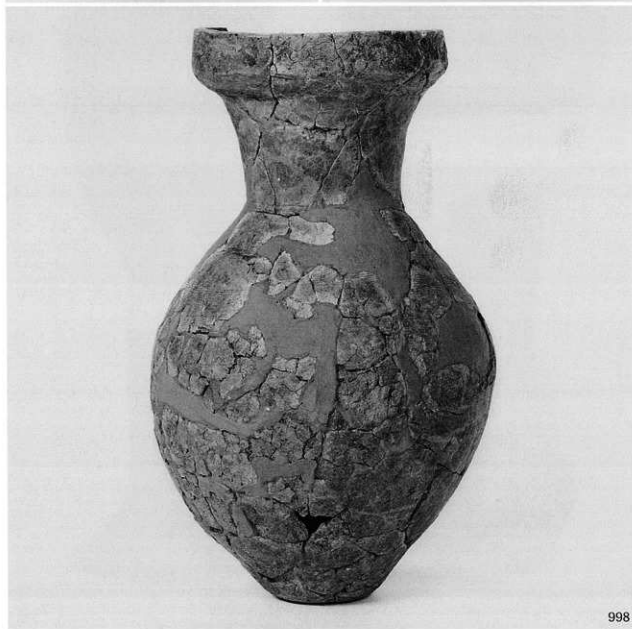
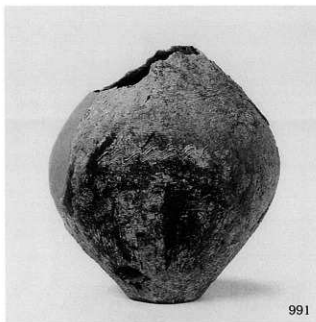
大溝 3 出土絵画土器



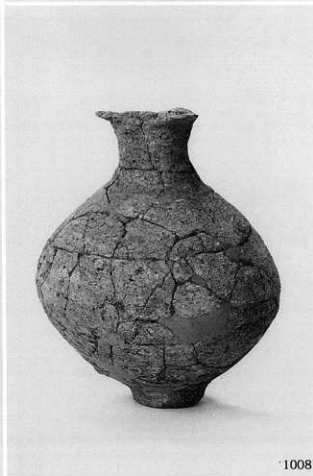
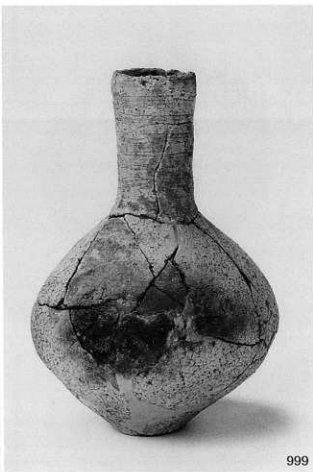
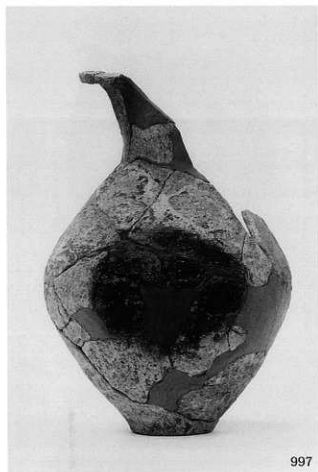




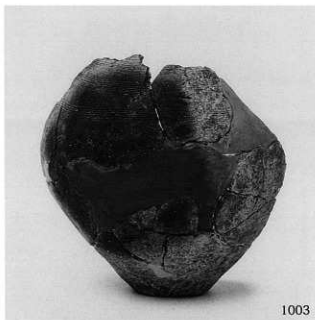
包含層等出土弥生土器 (1)



包含層等出土弥生土器 (2)



包含層等出土弥生土器 (3)



包含層等出土弥生土器 (4)



1018



1021



1022



1023



1027

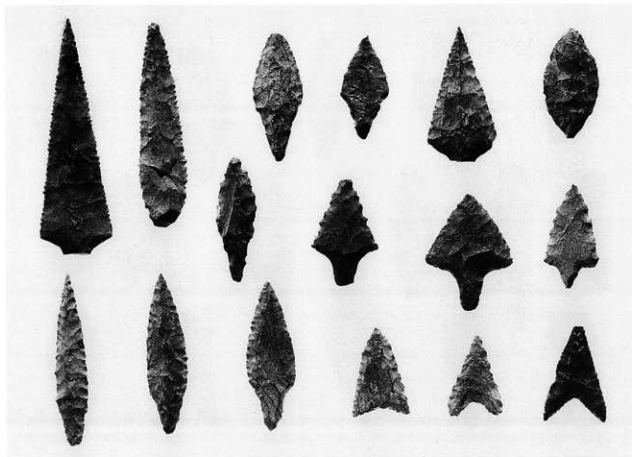
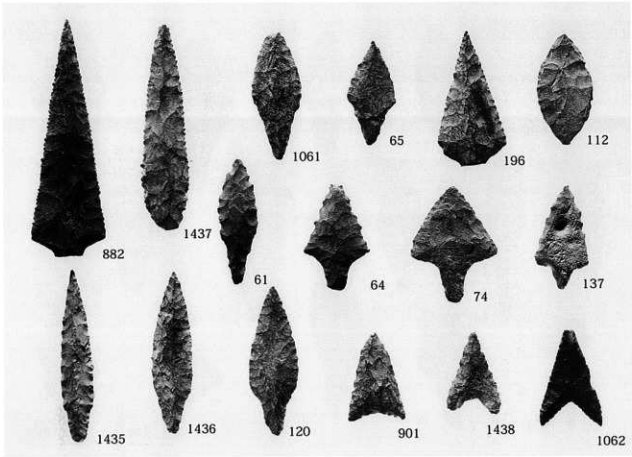


1028



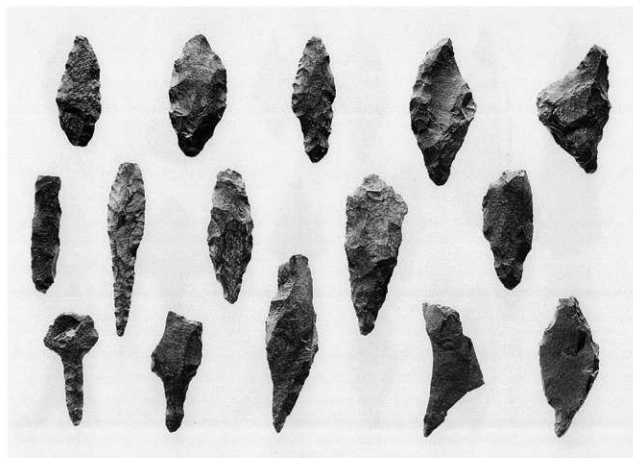
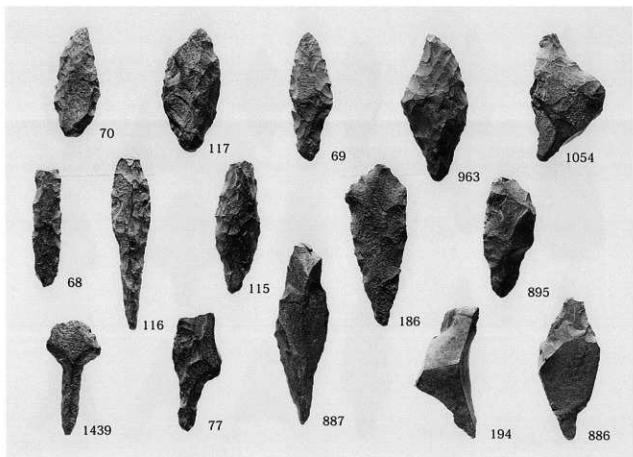
1029



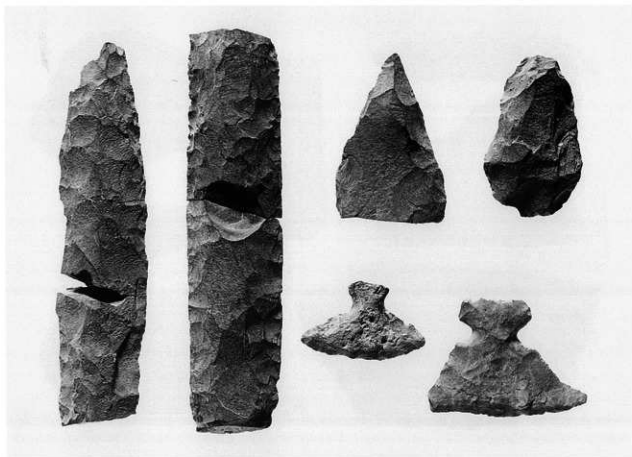
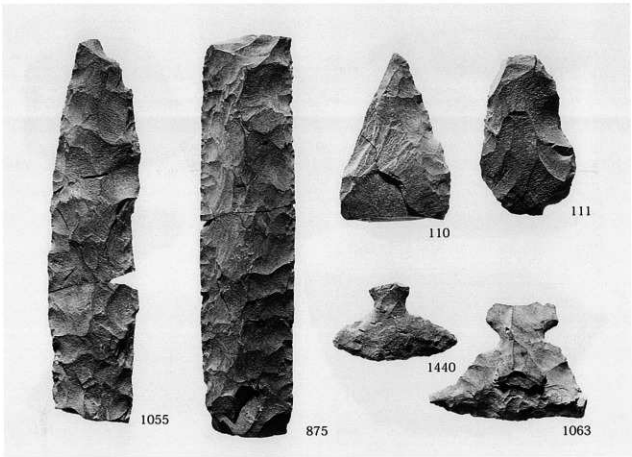


打製石器 (1) 石鏃

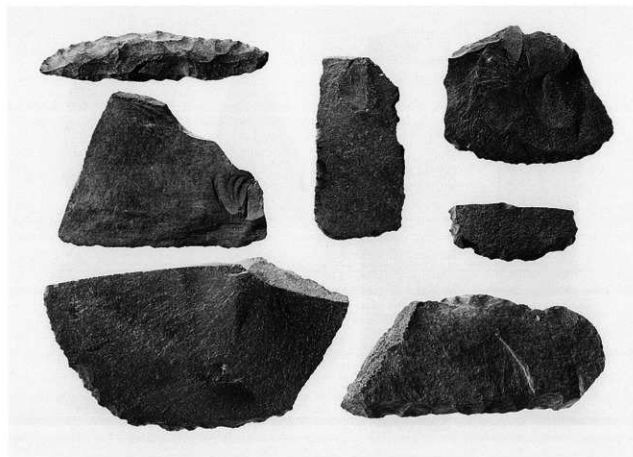
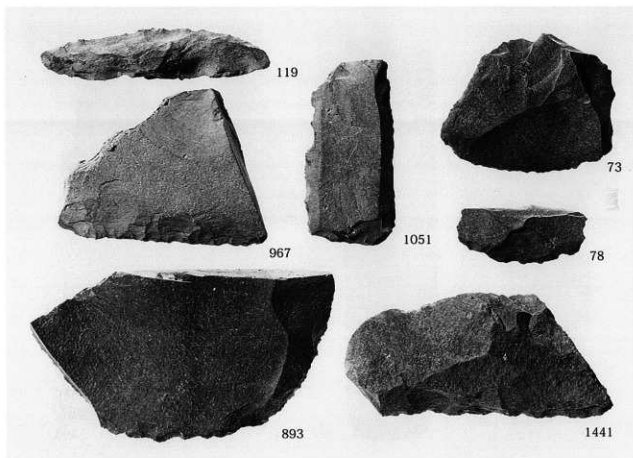




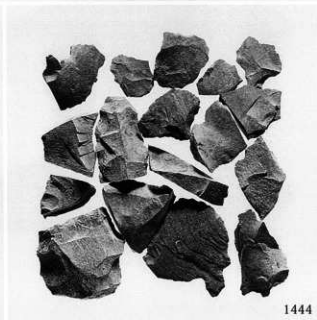
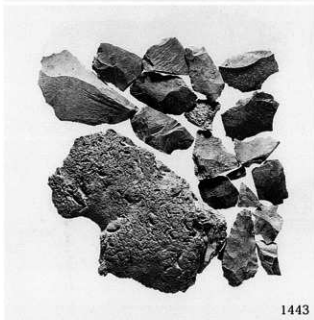
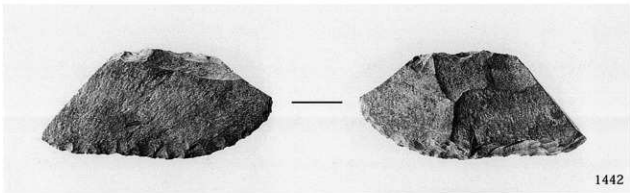
打製石器 (2) 石錐



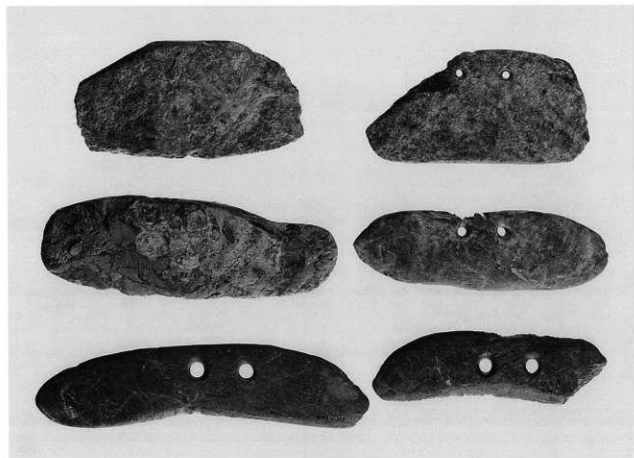
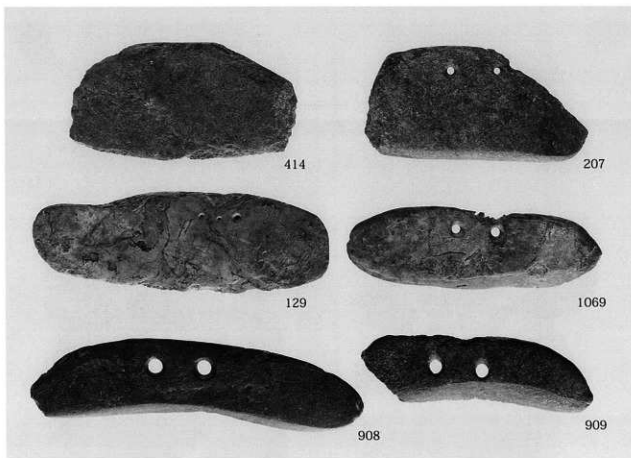
打製石器 (3) 石槍・尖頭器・石匙



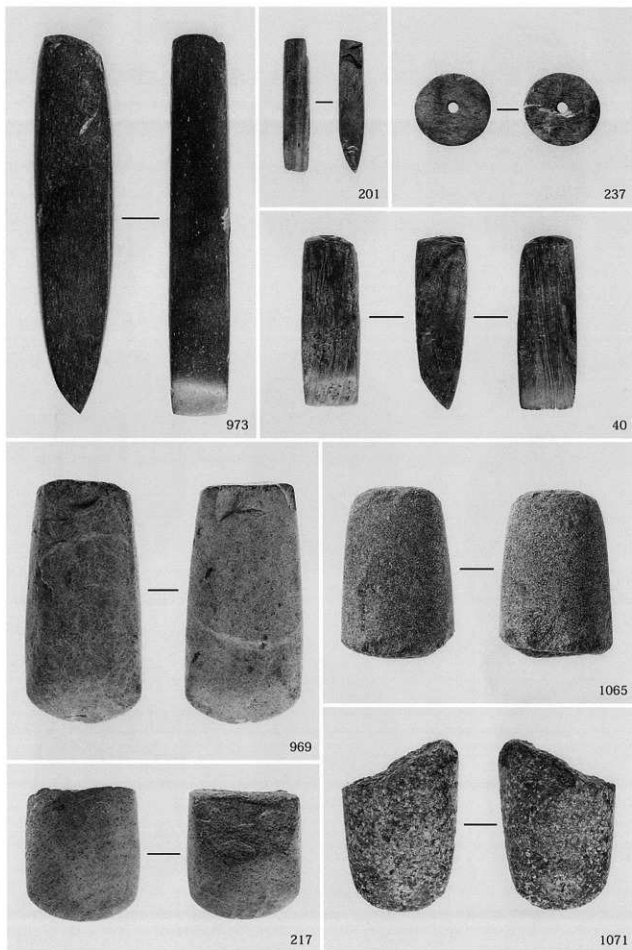
打製石器 (4) 石小刀・スクレイパー



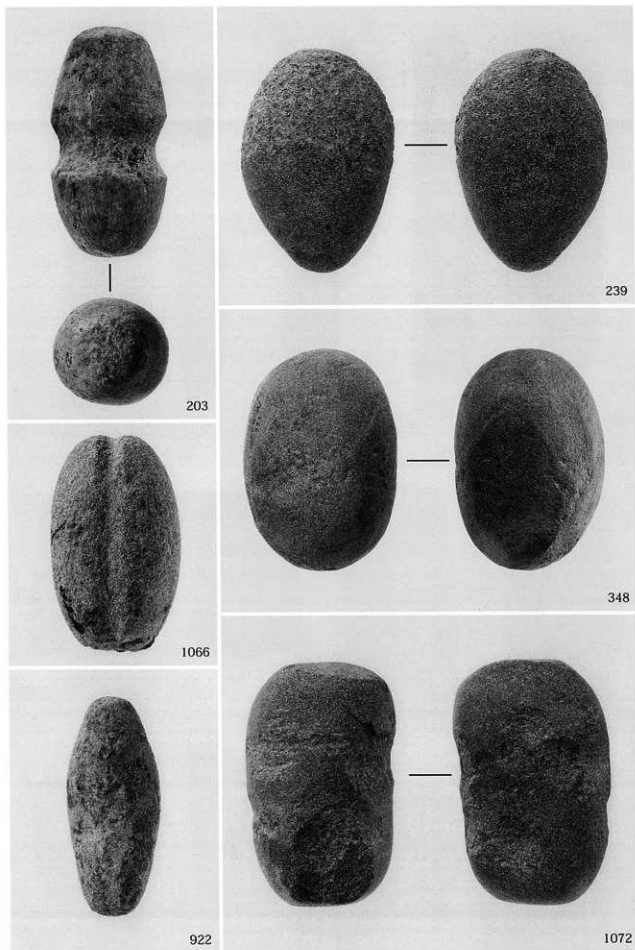
打製石器 (5) 石砲丁・サヌカイト片集合



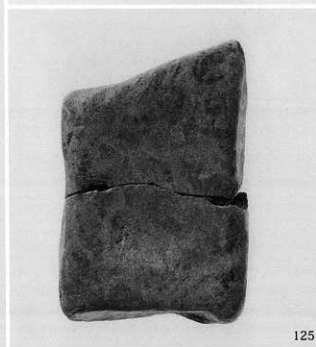
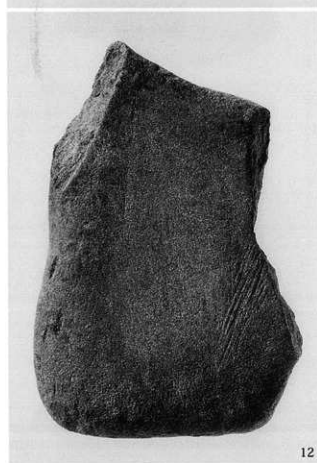
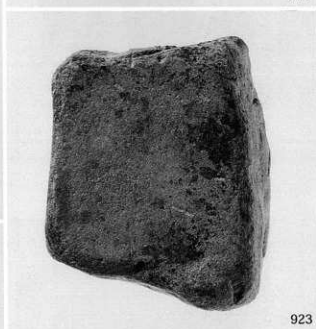
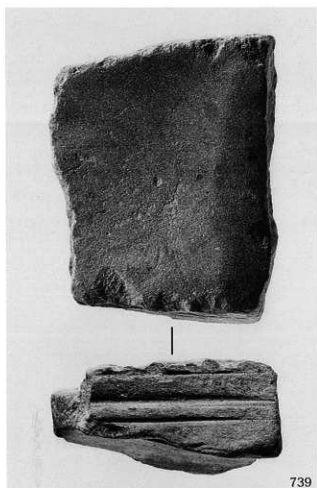
磨製石器 (1) 石筈丁



磨製石器 (2) 石斧類

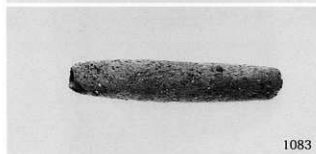
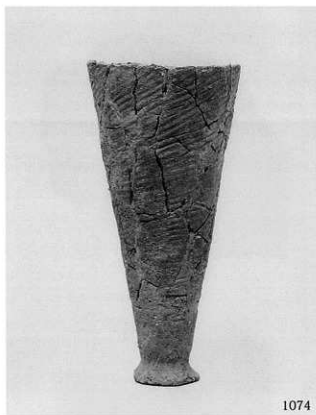


磨製石器 (3) 石槌・石錘・叩き石類

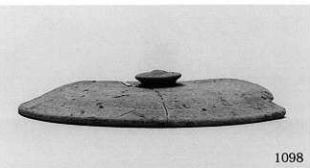


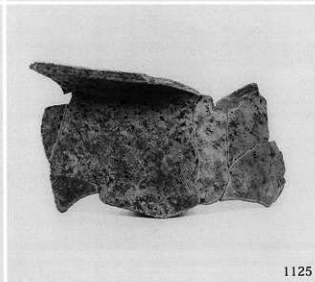
磨製石器 (4) 砥石・台石類





製塩土器 (古墳時代)、遺構出土古代土器 (1)







1145・1147～1152

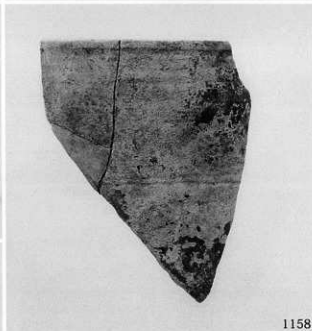
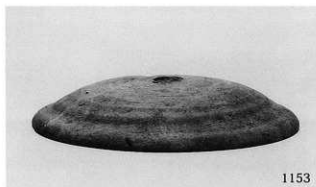
土師器

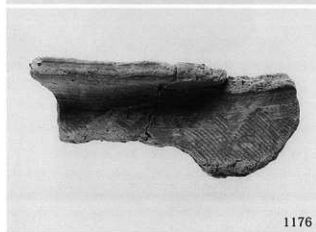


1126～1128・1131・1132・1134・1135・1137～1143

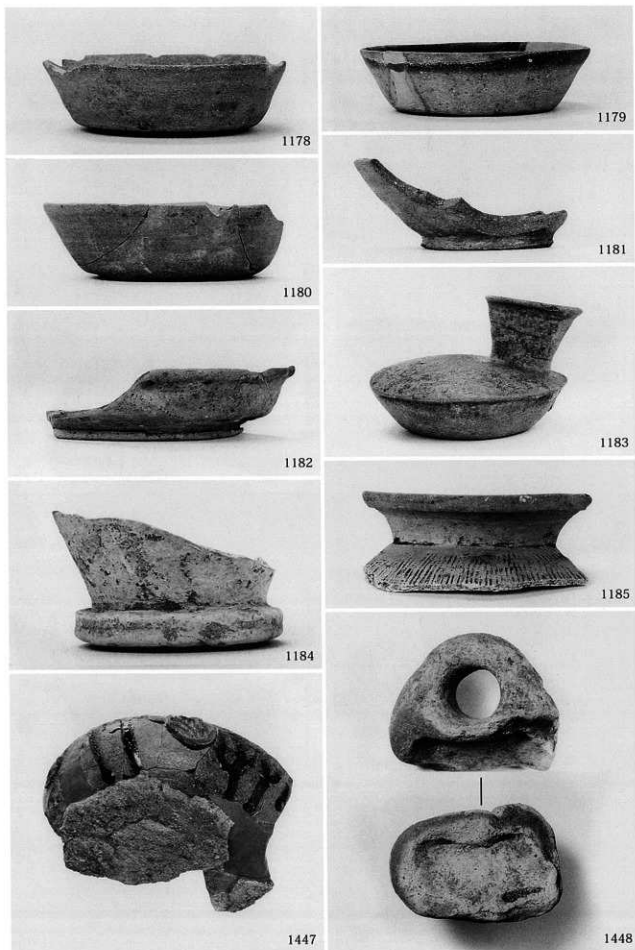
遺構出土古代土器 (4) 土坑 910001

須恵器

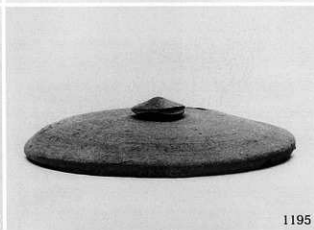
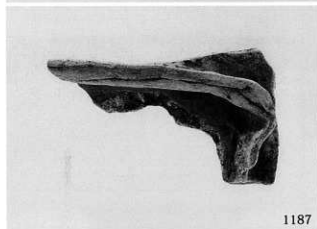
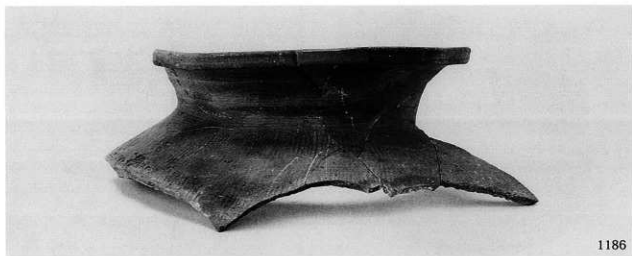




大溝 5 出土古代土器

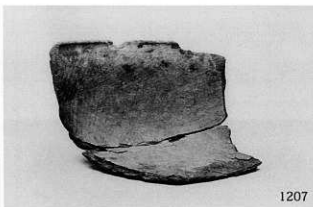


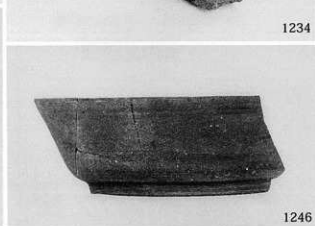
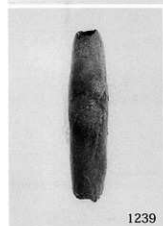
包含層出土古代土器 (1)



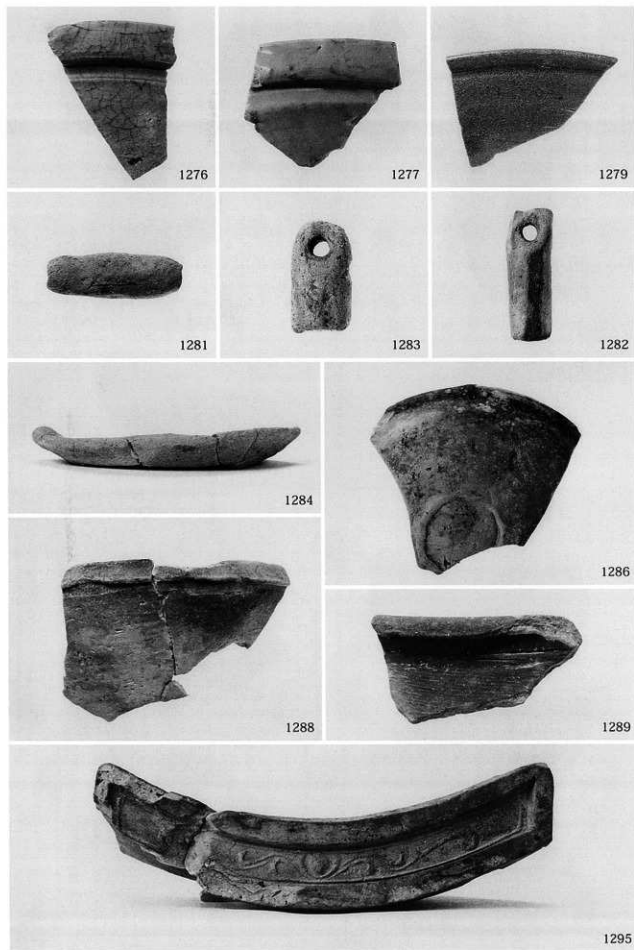
包含層出土古代土器 (2)





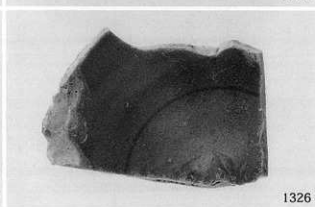
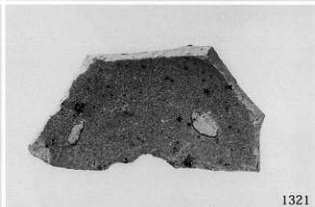
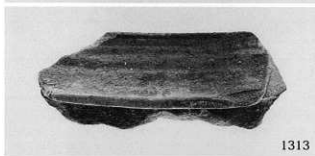


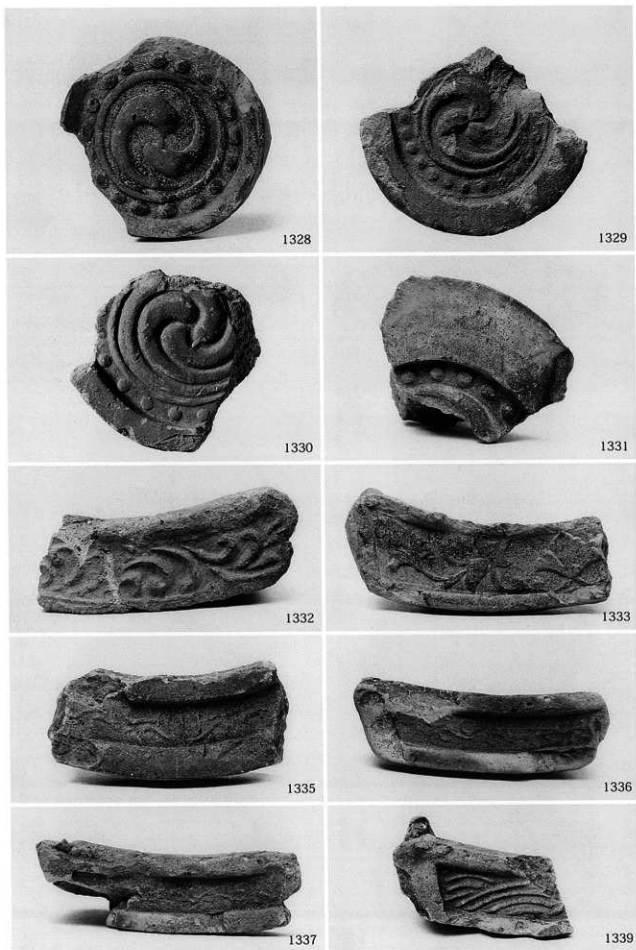




北半部出土中世遺物 (1)









1340



1341



1344



1346



1345



1347



1348



1349





南半部出土中世遺物 (1)



南半部出土中世遺物 (2)



(財)大阪府文化財センター調査報告書 第127集

## 男 里 遺 跡

—写真図版編—

主要地方道泉佐野岩出線（都市計画道路泉南岩出線）建設に伴う  
埋蔵文化財発掘調査報告書

発行年月日 / 2005年2月28日

編集・発行 / 財団法人 大阪府文化財センター  
大阪府堺市竹城台3丁21番4号

印刷・製本 / 株式会社 明新社  
奈良県奈良市南京終町3丁目464番地