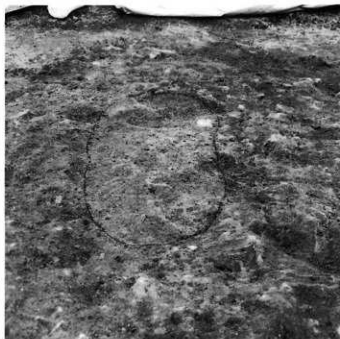




1. 建物19P1 (南から)



2. 建物19P4検出 (南から)



3. 建物20 (東から)



1. 建物22 (西から)



2. 建物28 (南から)



1. 溝2検出 (南から)



2. 溝2完掘 (南から)



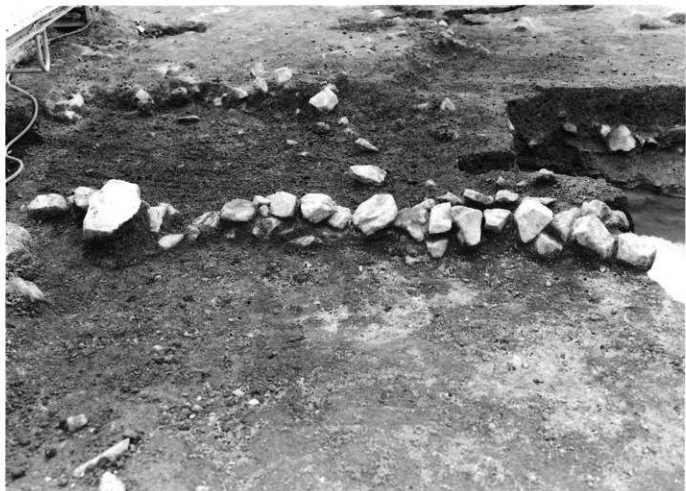
1. 溝2 (北から)



2. 溝1と溝2の交差部 (南から)



1. 溝3 (南から)



2. 溝3石列 (東から)



1. 溝4西側（東から）



2. 溝4東側（東から）



1. 溝2土層  
(第58図CD)



2. 溝2土層  
(第58図EF)



3. 溝3土層  
(第58図KL)

1. 溝4土層  
(第60図AB)



2. 溝4土層  
(第60図EF)



3. 溝4土層  
(第60図HG)







1. 溝4土層 (第60図KL)



2. 土器溜1 (東から)



3. 土器溜2 (西から)

1. 土坑9  
(南東から)



2. 土坑11  
(南から)



3. 土坑12  
(南から)





1. 河道2、河道3 (東から)



2. 河道2土層 (第64図CD)

1. 河道2杭列  
(北東から)



2. 建物30P2  
(北東から)

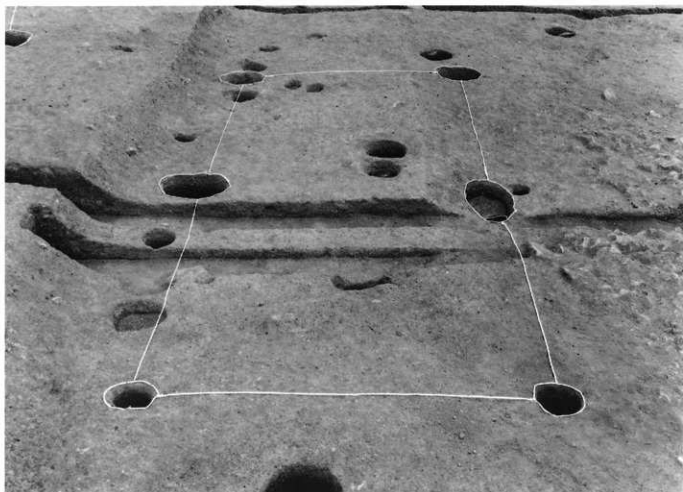


3. 建物30P4  
(東から)





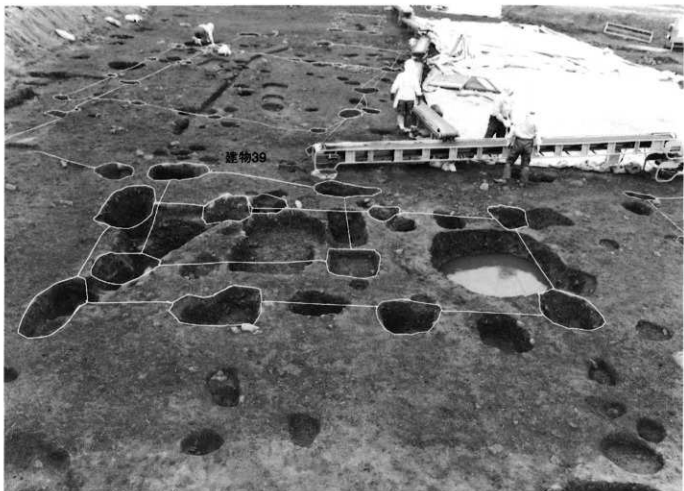
1. 建物33付近（東から）



2. 建物33（西から）



1. 建物37. 38 (北から)



2. 建物39. 41 (西から)



1. 建物40（東から）



2. 構7（東から）

1. 溝5検出  
(南西から)



2. 溝5石列  
(南から)



3. 溝5石列  
(東から)







1. 土壇16. 19 (北東から)



2. 土壇20 (南東から)



1. 土坑21 (北西から)



2. 建物44 (北西から)



1. 建物50 (東から)



2. 建物56P10 (西から)



3. 土壇23 (東から)



1. 土壇24検出 (西から)



2. 土壇26 (南西から)



3. 土壇31検出 (南から)



4. 土壇31 (南から)



5. 土壇34検出 (北から)



1. A区 (1区) 完掘 (東から)



2. A区 (2区) 完掘 (南から)



1. A区 (4区) 完掘 (南東から)



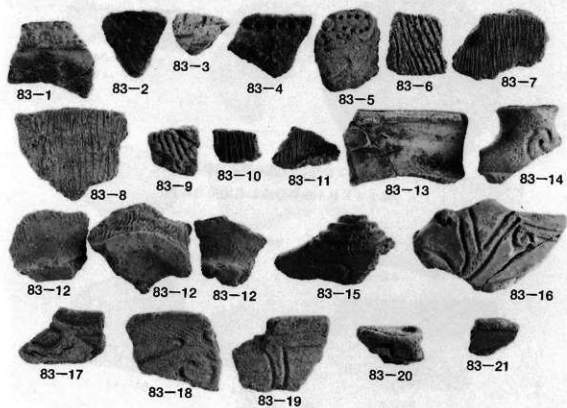
2. A区 (3B区) 完掘 (北から)



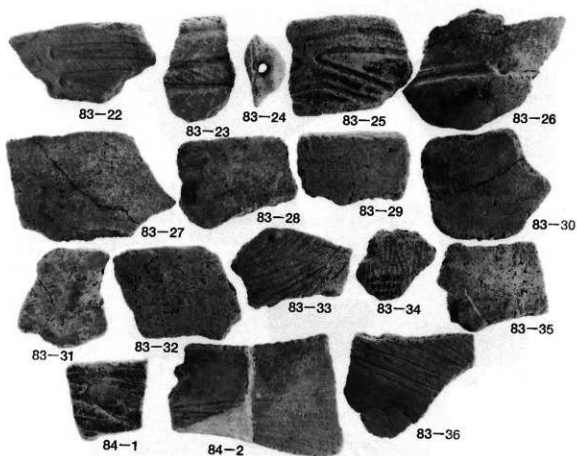
1. C区完掘（南から）



2. C区完掘（北から）

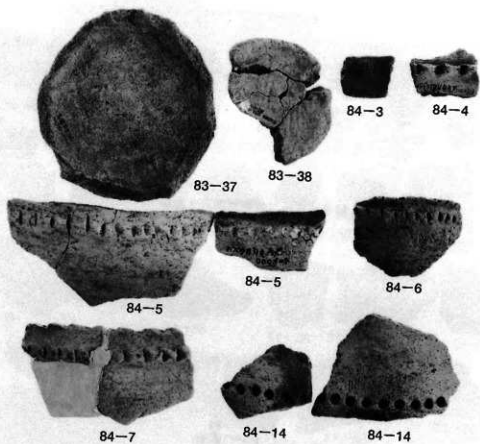


1. 縄紋土器 (1)

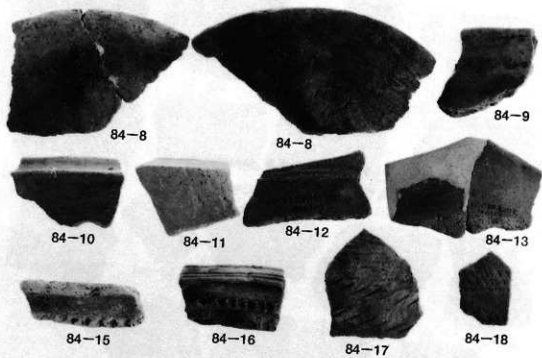


2. 縄紋土器 (2)

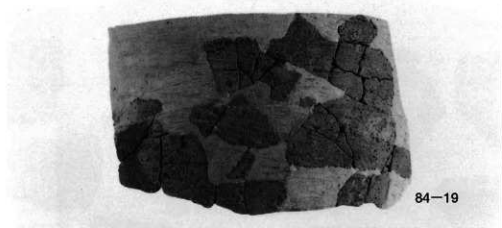




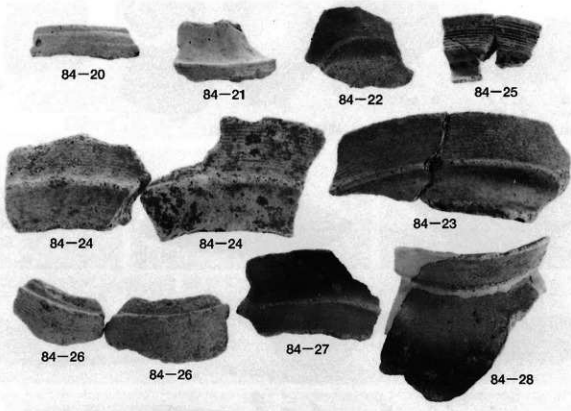
1. 縄紋土器 (3)



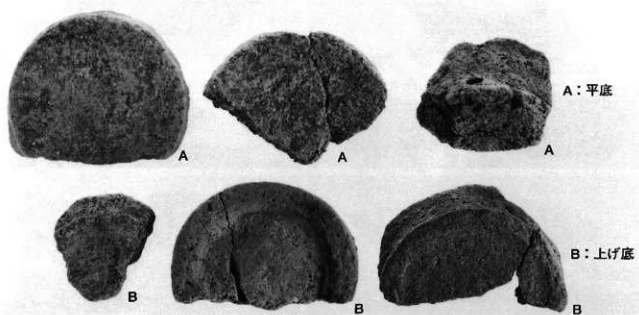
2. 縄紋土器 (4)



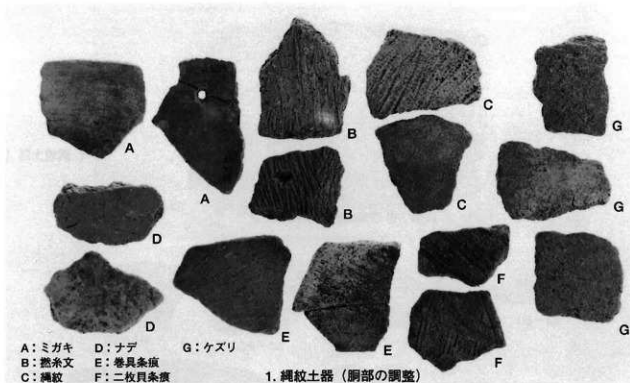
1. 縄紋土器 (5)



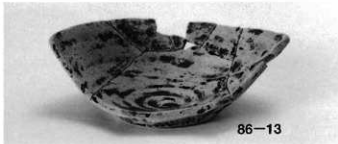
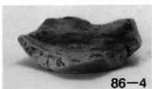
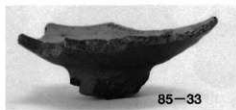
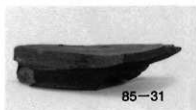
2. 弥生土器・古墳時代の土師器



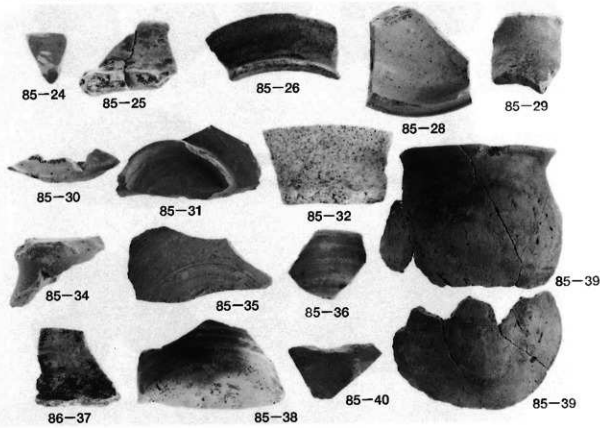
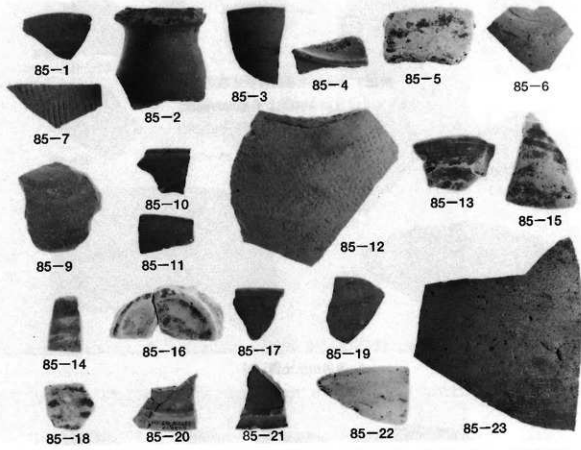
3. 縄紋土器 (底部)



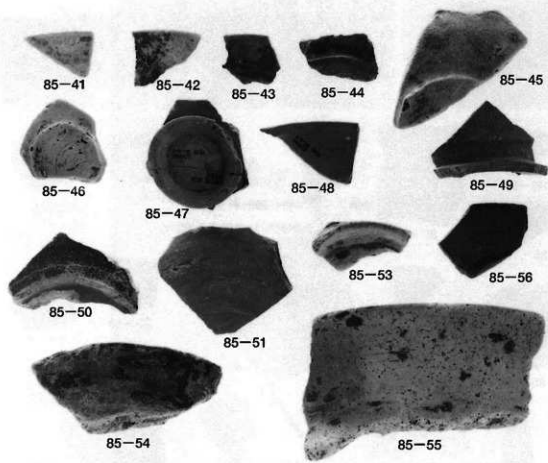
1. 縄紋土器 (胴部の調整)



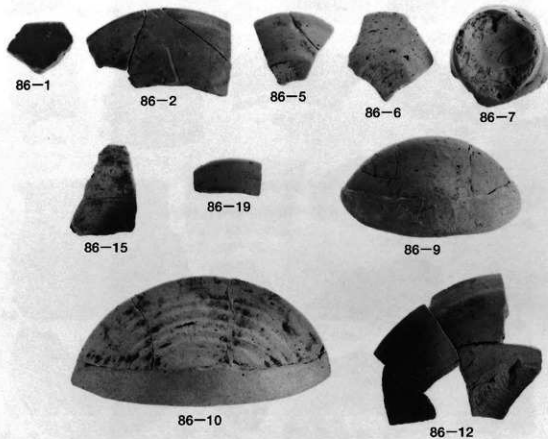
2. 遺構出土土器 (1)



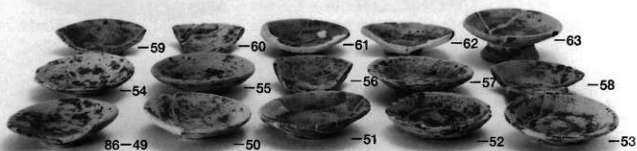
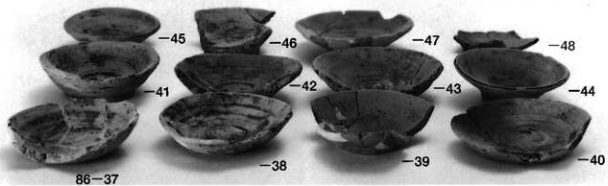
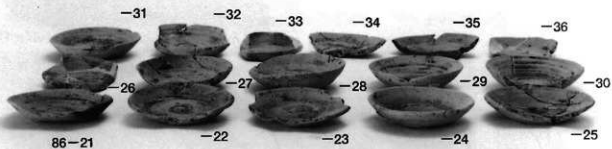
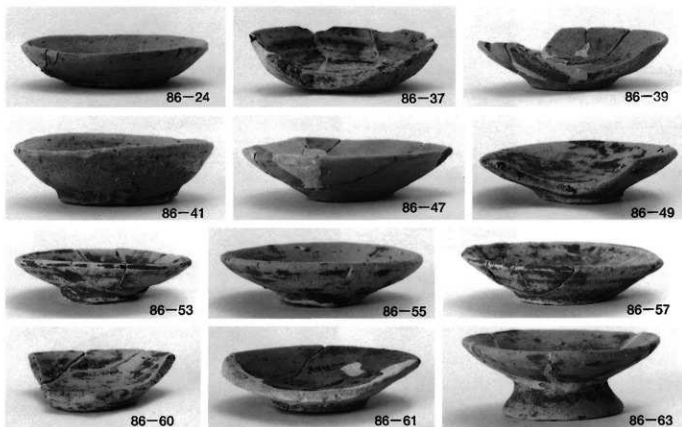
遺構出土土器 (2)



1. 遺構出土土器 (3)



2. 遺構出土土器 (4)

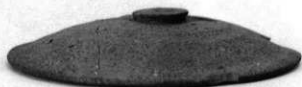




87-4



87-5



87-6



87-7



87-8



87-9



87-10



87-11



87-15



87-12



87-17



87-16



87-18



87-19



87-20



87-24



87-26



87-25



87-30



87-27



87-28



87-32



87-29



87-31



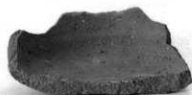
87-34



87-35



87-36



87-40



87-41



87-45



87-44

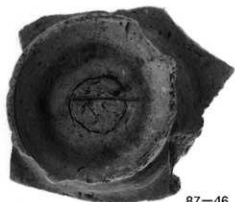




87-46



87-47



87-46



87-48



87-49



87-50



87-52



87-51



87-53



88-2



88-13



88-8



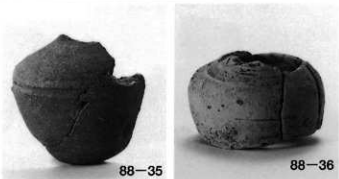
88-7



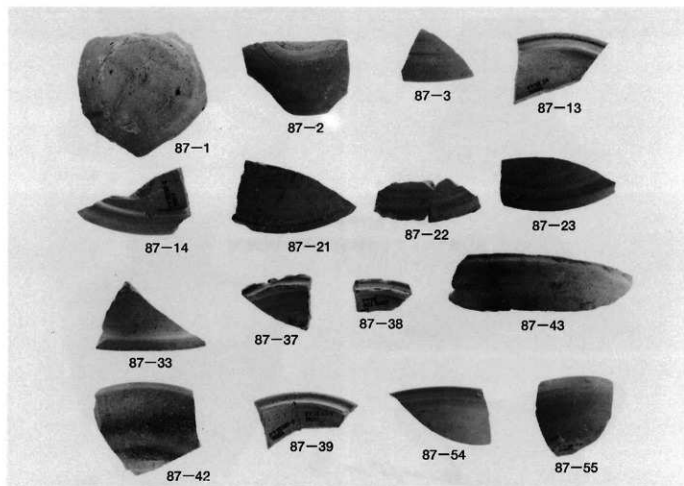
88-10



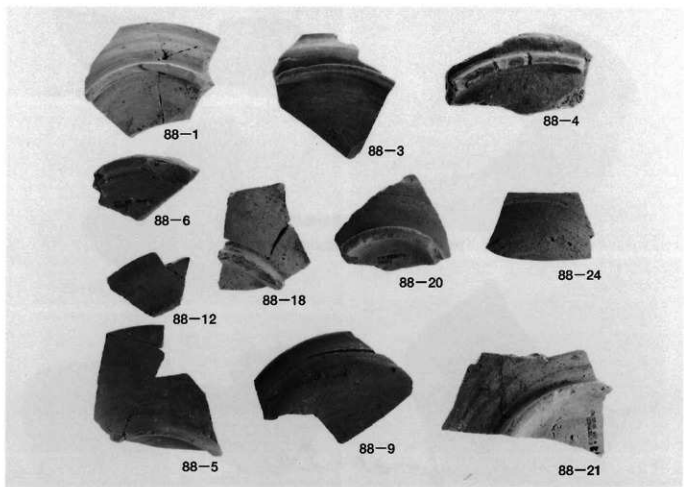
88-11



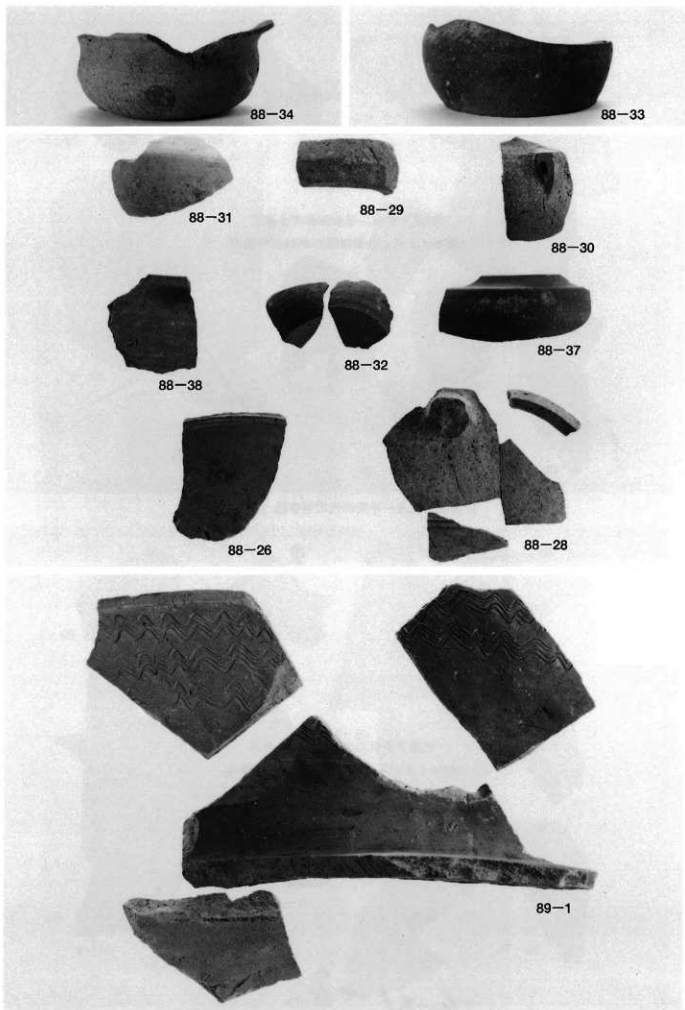
古墳時代末～平安時代の須恵器 (4) (坏・壺)



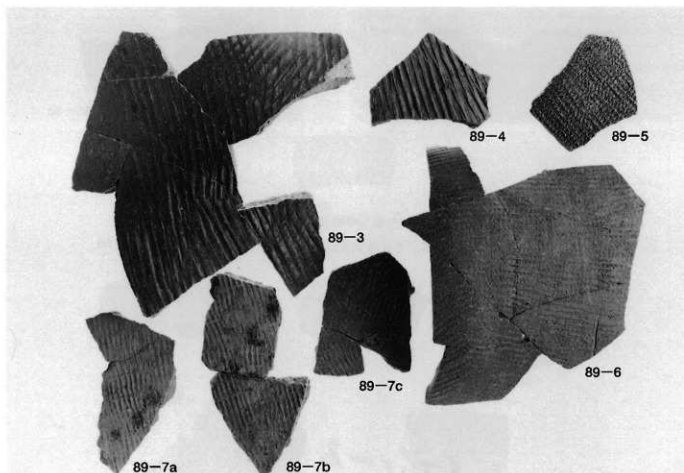
1. 古墳時代末～平安時代の須恵器 (5) (蓋・坏)



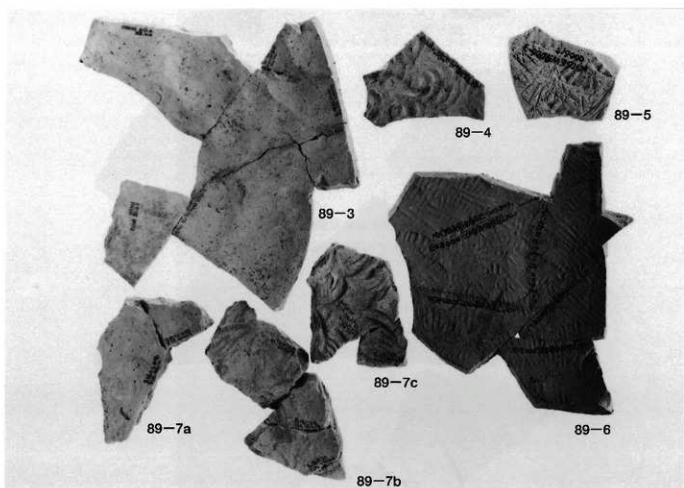
2. 古墳時代末～平安時代の須恵器 (6) (皿・坏)



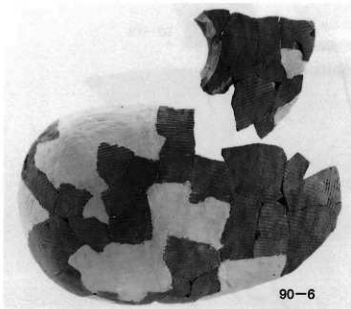
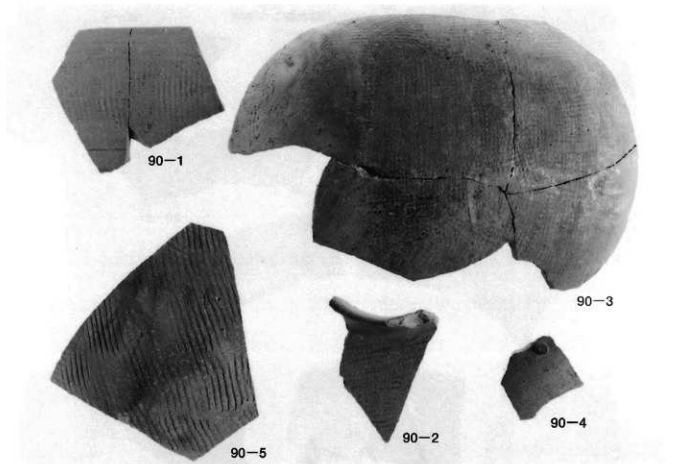
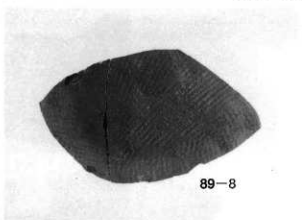
古墳時代末～平安時代の須恵器(7)(壺・甕)



1. 古墳時代末～平安時代の須恵器 (8) (裏)

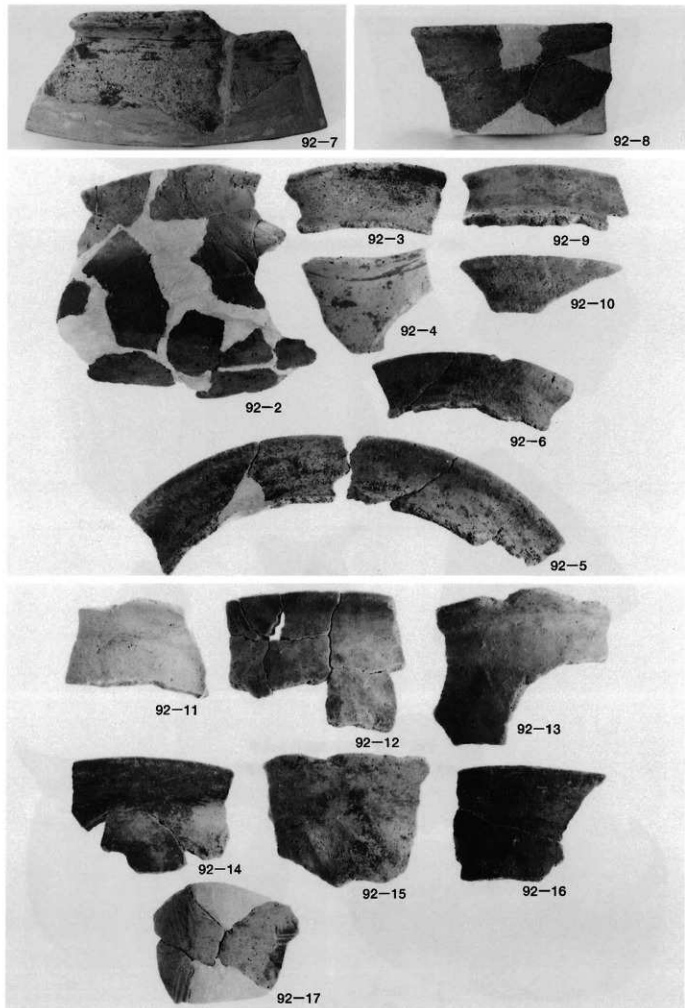


2. 古墳時代末～平安時代の須恵器 (9) (裏：裏面)

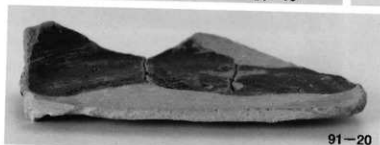
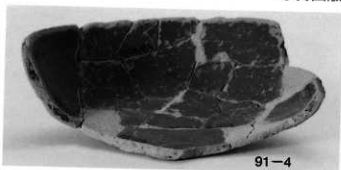
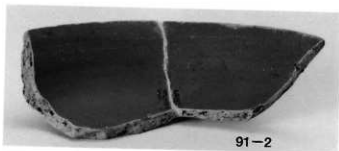


古墳時代末～平安時代の須恵器 (10) (甕・横瓶)

奈良～平安時代の土師器 (1) (甕)



奈良～平安時代の土師器 (2) (甕)



赤彩土師器 (1) (坏・碗・皿)





91-23



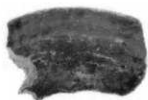
91-24



91-25



91-26



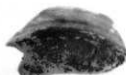
91-1



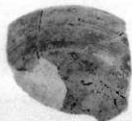
91-3



91-5



91-7



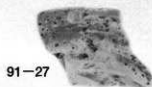
91-12



91-13



91-18



91-27



91-28



91-29



91-17

1. 赤彩土師器 (2) (坏・皿・碗)



93-3



93-4



93-5



93-9



93-10



93-13

2. 中世土師器 (1) (坏)



93-14



93-15



93-18



93-23



93-25



93-26



93-29



93-28



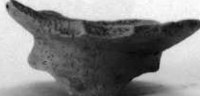
93-30



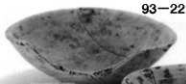
93-31



93-32



93-33



93-22



93-19



93-21



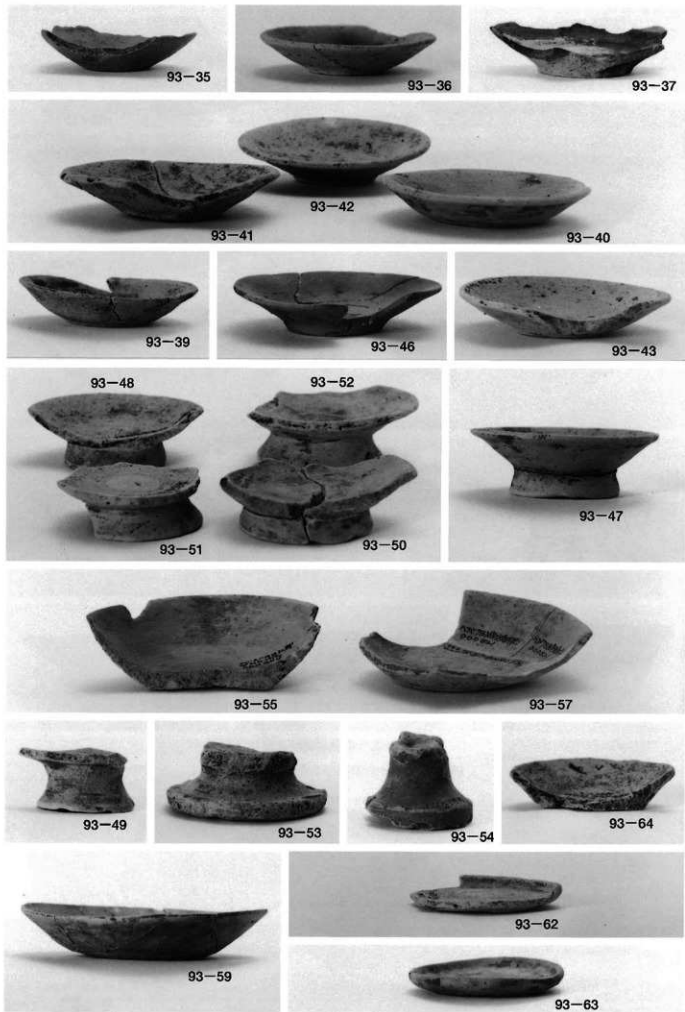
93-17



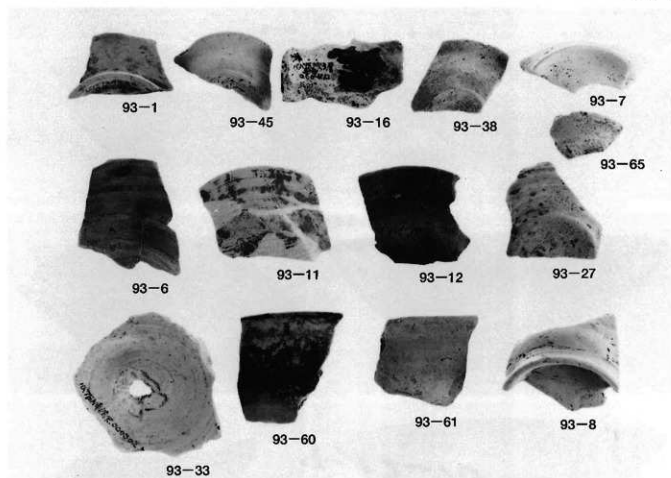
93-18



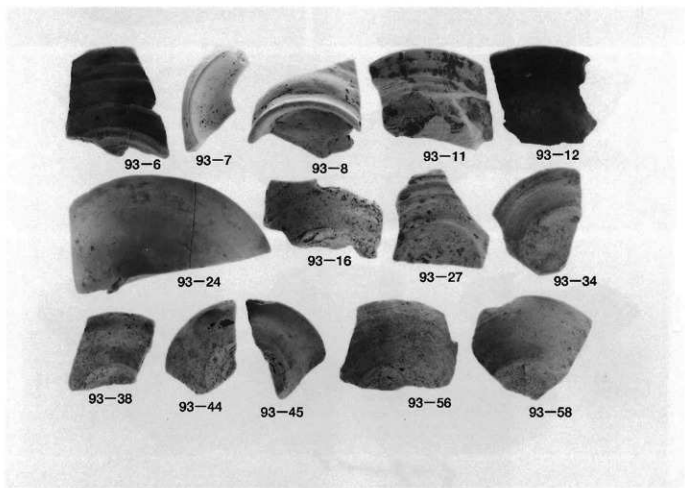
93-20



中世土師器(3)(皿・高台付皿)



1. 中世土師器 (4) (坏・高台付坏・鉢)



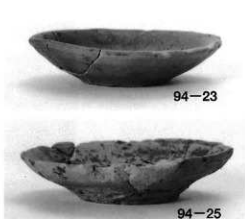
2. 中世土師器 (5) (坏・高台付坏・皿)



中世土師器 (6) (満2:坏)



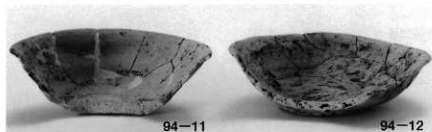
94-9



94-23



94-25

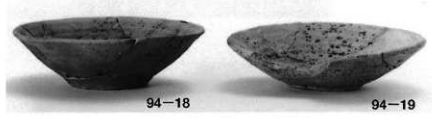


94-11

94-12



94-27



94-18

94-19



94-28



94-21



94-30



94-37



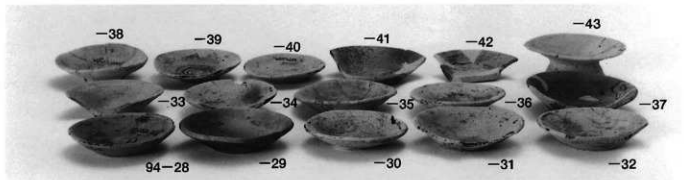
94-25

94-26

94-27

94-23

94-24



-38

-39

-40

-41

-42

-43

94-28

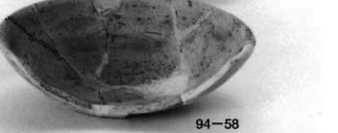
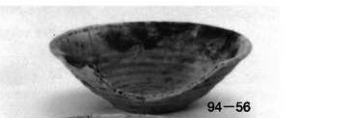
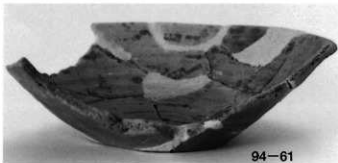
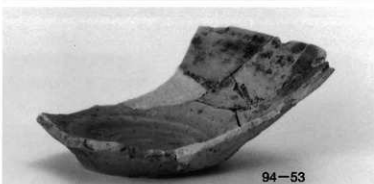
-29

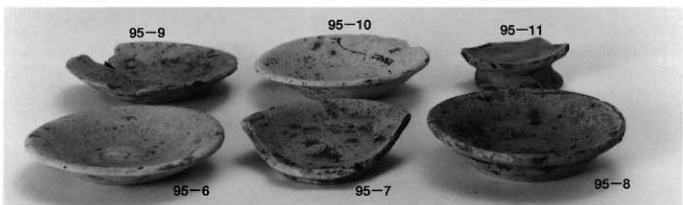
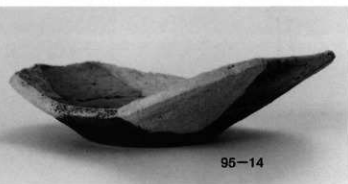
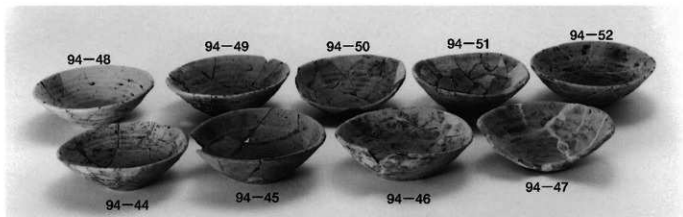
-30

-31

-32

中世土師器 (7) (溝2: 坏・皿・高台付皿)





中世土師器 (9) (溝3: 坏・高台付坏・皿・高台付皿)





95-13



95-16



95-14



95-15



95-17



95-19



95-18



95-20



95-12



95-30



95-21



95-41

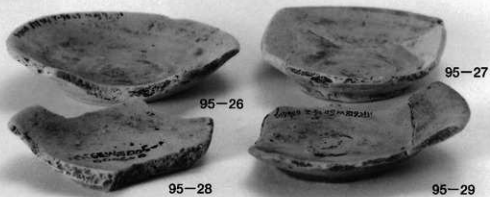
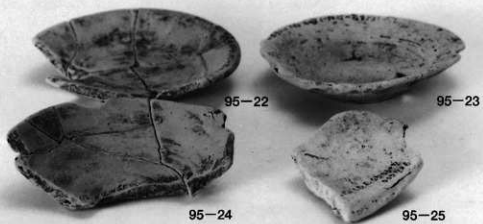


95-35



95-36

95-34





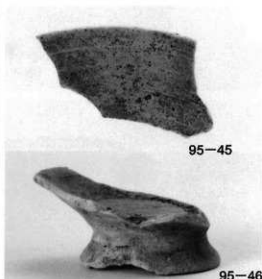
95-42



95-43

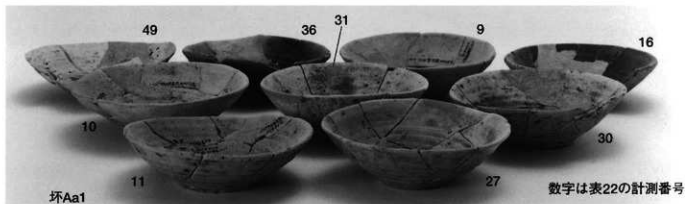


95-44



95-45

95-46



49

36

31

9

16

10

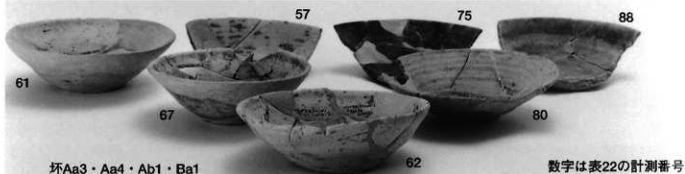
30

11

27

坏Aa1

数字は表22の計測番号



57

75

88

61

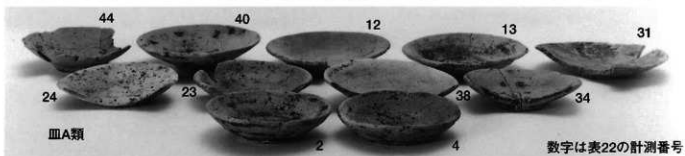
67

80

62

坏Aa3・Aa4・Ab1・Ba1

数字は表22の計測番号



44

40

12

13

31

24

23

38

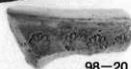
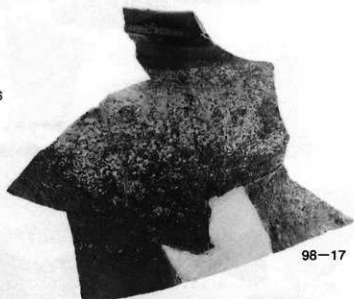
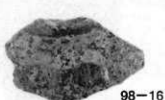
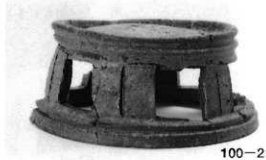
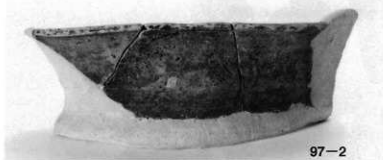
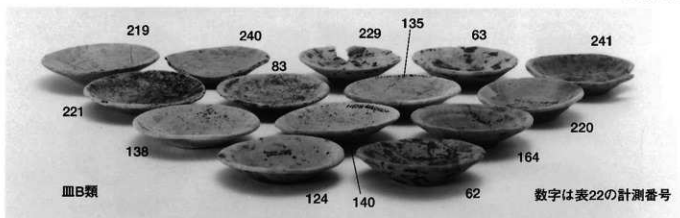
34

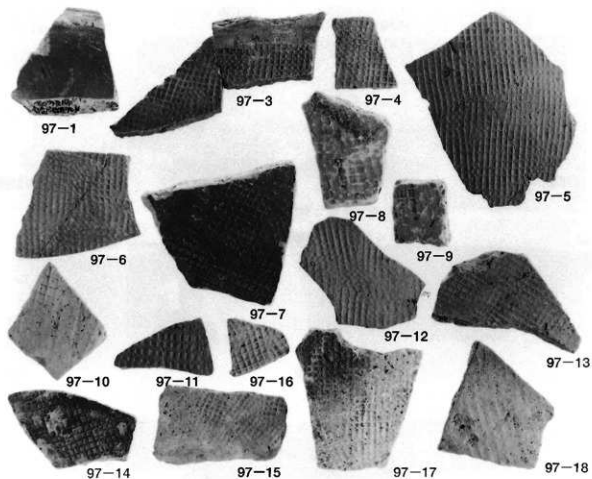
皿A類

2

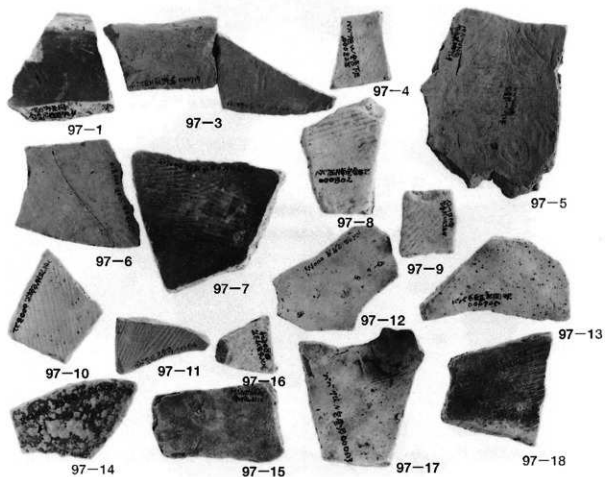
4

数字は表22の計測番号

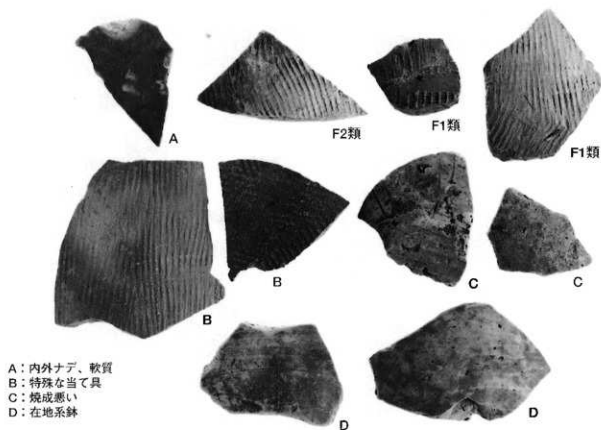




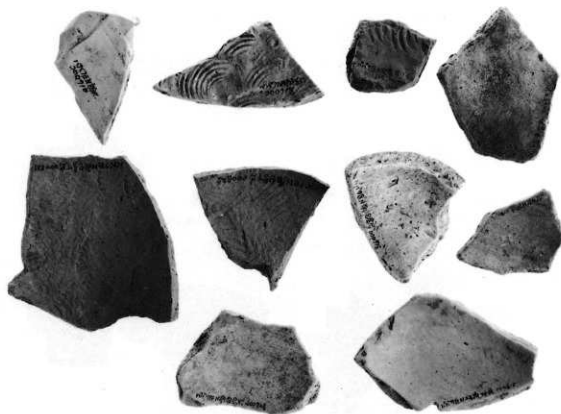
1. 須恵質の甕 (2)



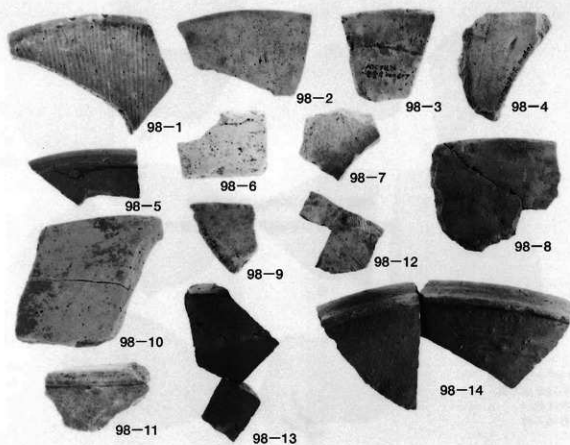
2. 須恵質の甕 (3:裏面)



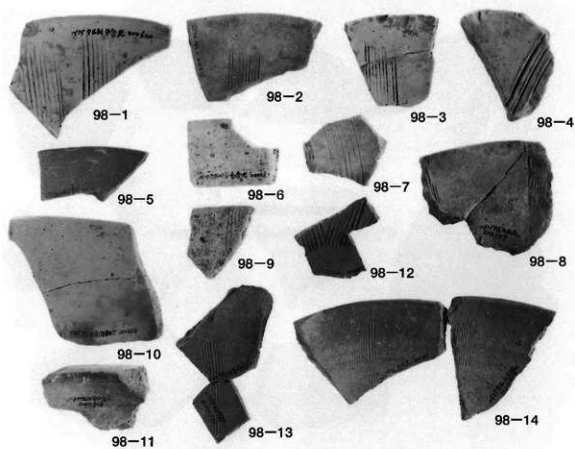
1. 須恵質の甕 (4)



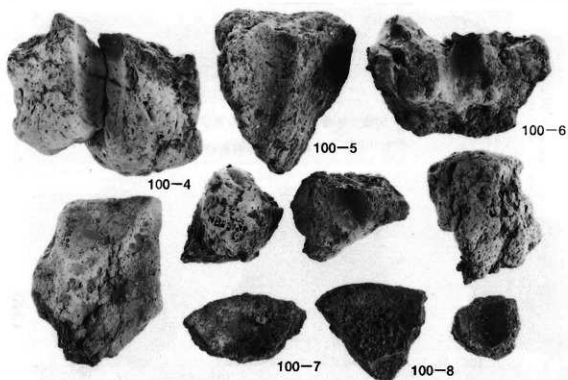
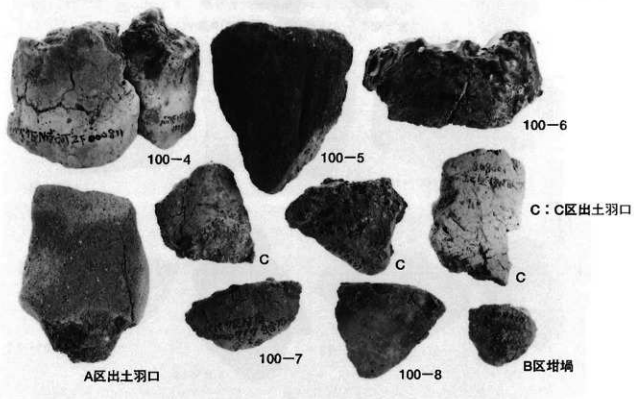
2. 須恵質の甕 (5) (裏面)



1. 擂鉢 (1)

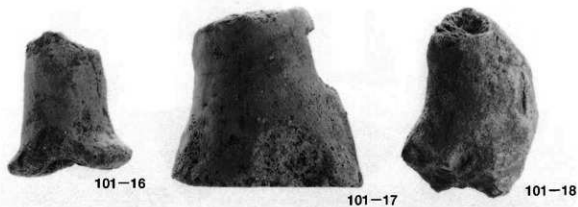
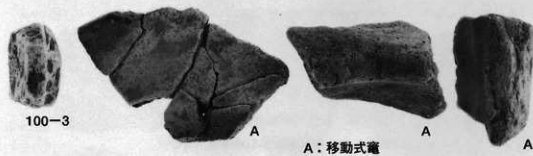
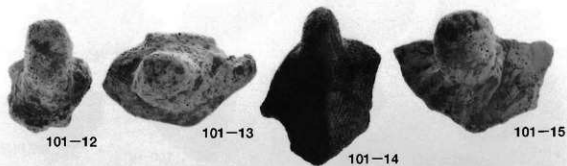
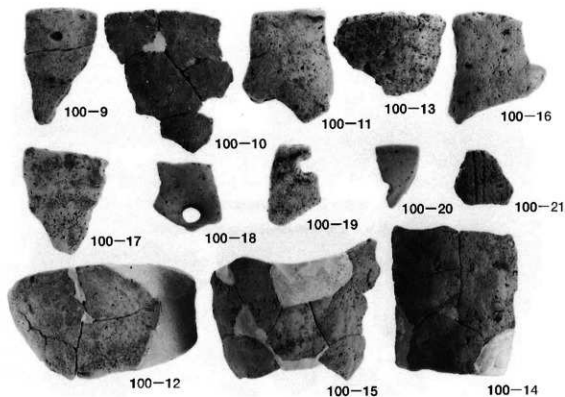


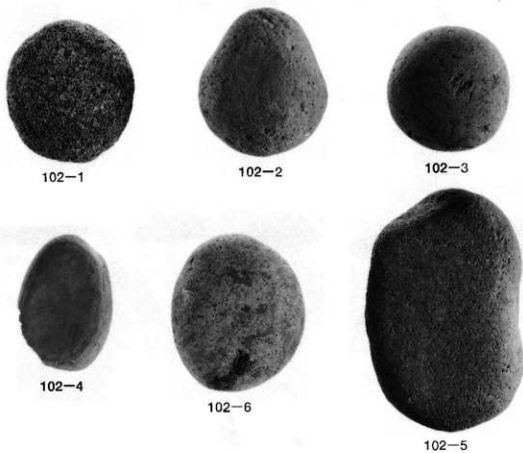
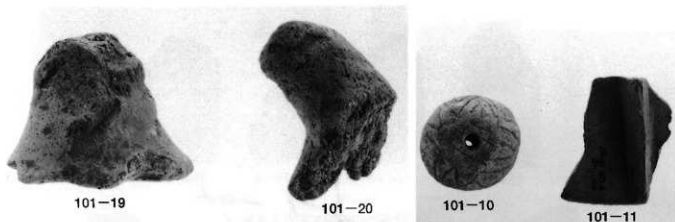
2. 擂鉢 (2)



土製品 (2) (瓦・羽口)

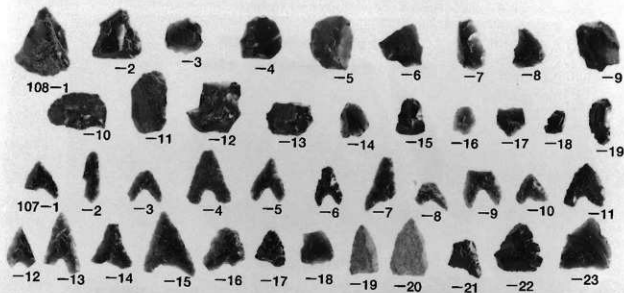
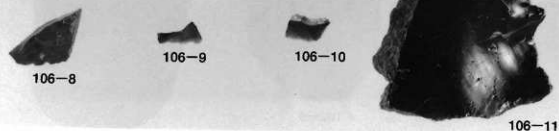
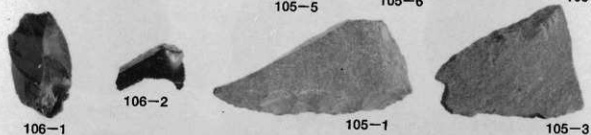
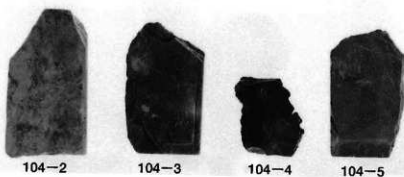




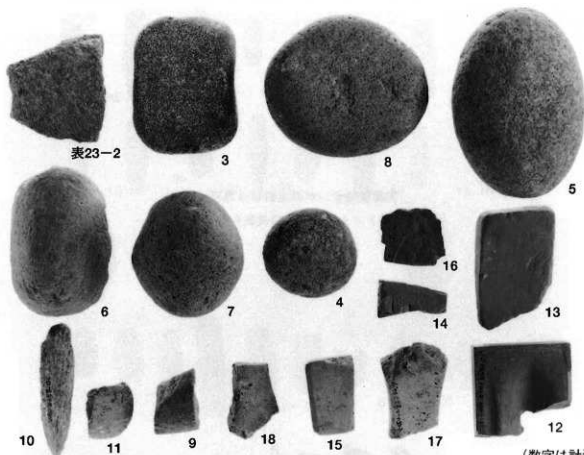
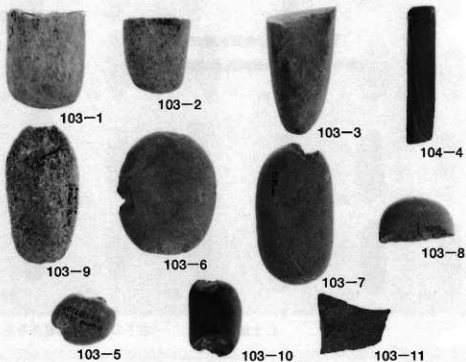


(数字は計測番号)

土製品 (4) (土製支脚・紡錘車・硯)・石器 (1) (石皿)

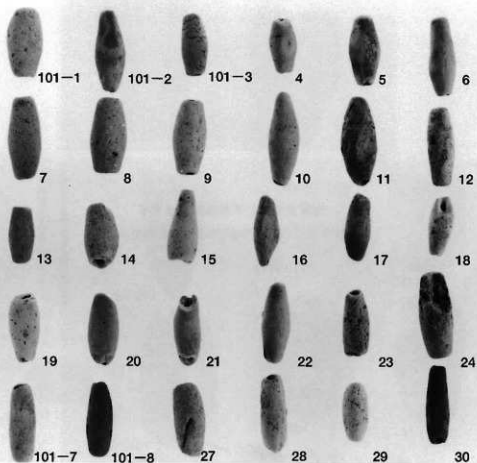


石器 (2) (砥石・硯・スクレーパー・ユーズドフレイク・石鏃・楔形石器)

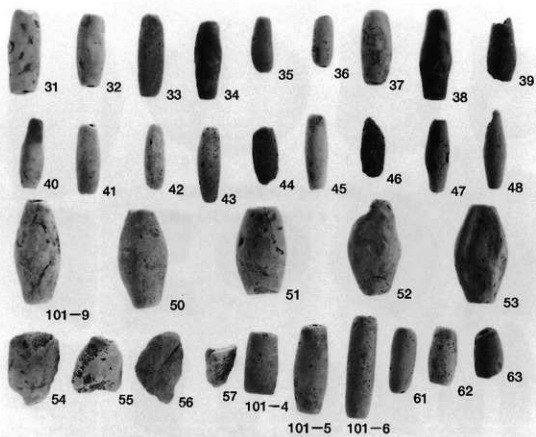


(数字は計測番号)

石器 (3) (石皿・磨石・砥石・石斧・石錘・硯)



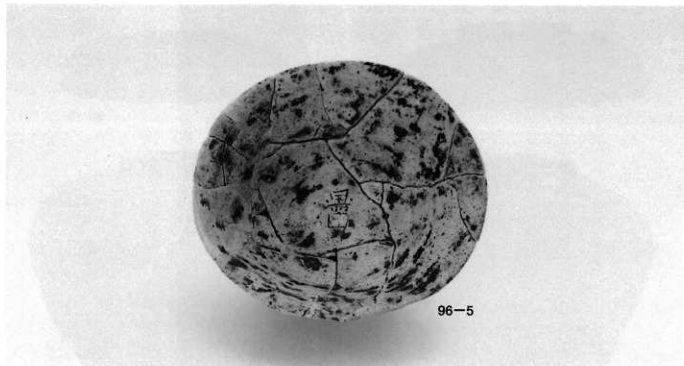
1. 土錘 (1) (右下の数字は掲載番号および計測番号)



2. 土錘 (2) (右下の数字は掲載番号および計測番号)



平安時代の墓出土土器 (1)



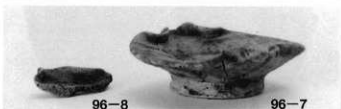
96-5



96-5



96-10



96-8

96-7



96-11



96-12



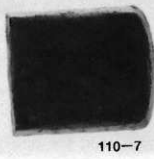
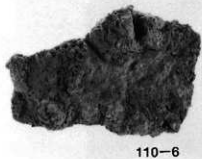
96-13



96-14



96-15







110-1



大刀細部写真



114-15



110-5



110-6



115-5



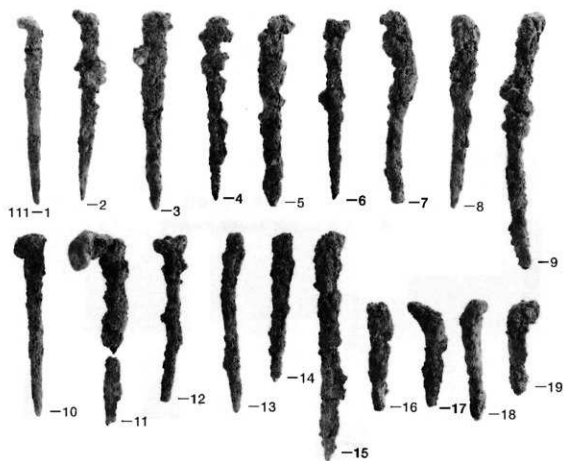
115-4



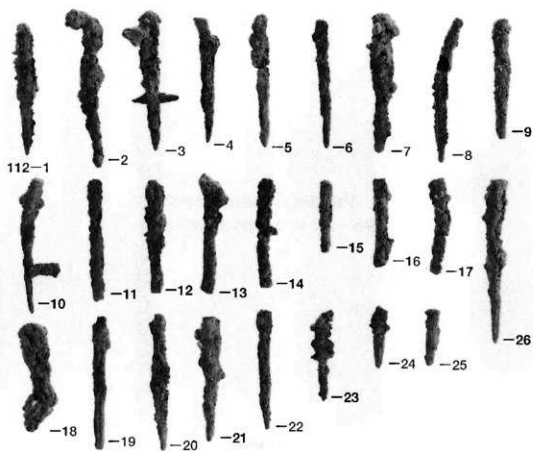
111-15



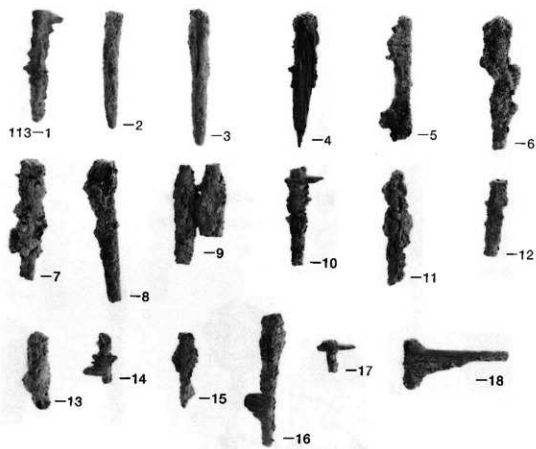
111-9



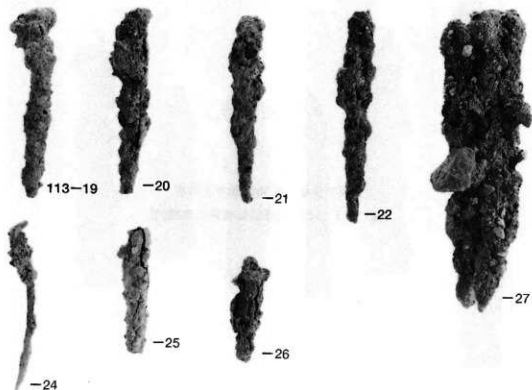
1. 平安時代の墓出土鉄釘 (1: 大形)



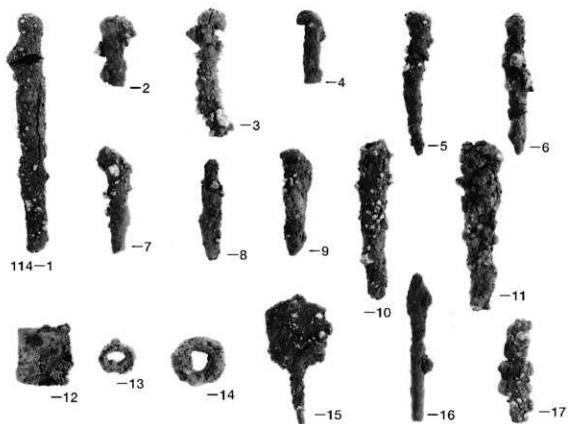
2. 平安時代の墓出土鉄釘 (2: 小形)



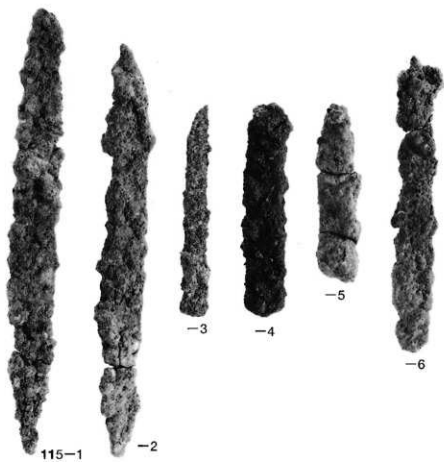
1. 平安時代の基出土鉄釘 (3 : 小形)



2. A区出土鉄釘



1. 鉄釘・鉄屑・環状鉄製品



2. 鉄刀・刀子