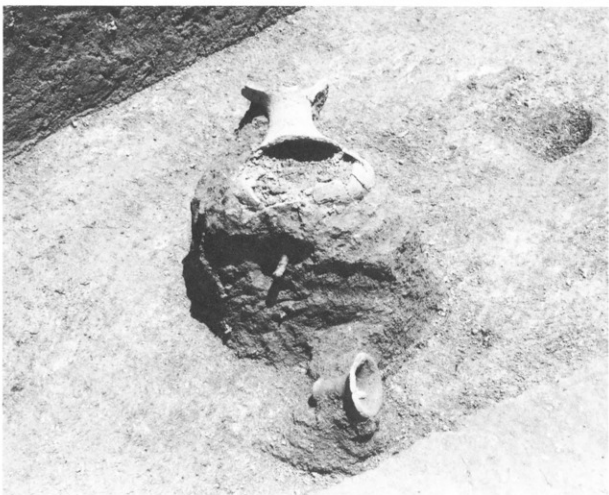
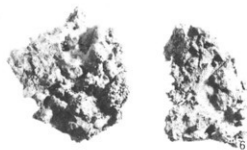
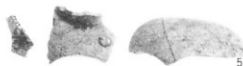
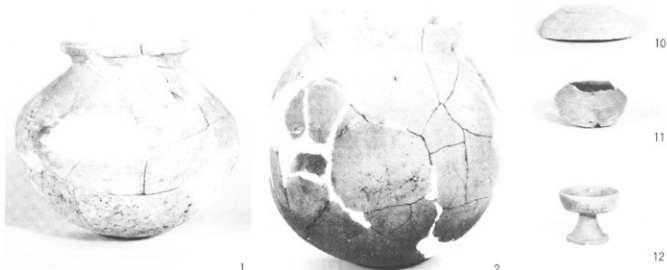


一号住居址



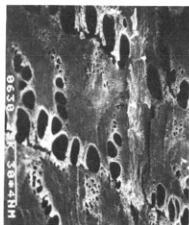
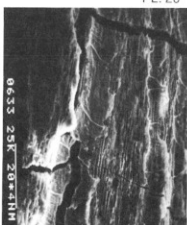
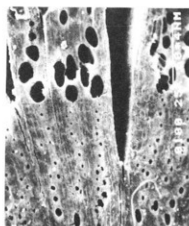
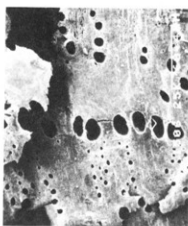
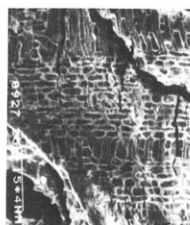
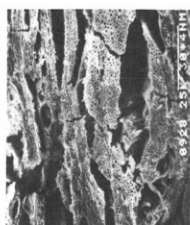
一号住居址遺物出土狀況



10. 环盖(A1号墳閉塞部出土)
 11. 小形壺(A1号墳墓道部出土)
 12. 小形高环(A1号墳墓道部出土)
 13. 小形高环(A1号墳墓道部出土)
 14. 平瓶(A1号墳狭道部出土)
 15. 横瓶(A1号墳閉塞部出土)
 16. 台付壺(B地区1号住居址出土)



1. 壺(8号炭窯側庭部出土)
 2. 壺(2号炭窯前庭部出土)
 3. 平瓶(4号炭窯側庭及び前庭部出土)
 4. 壺(9号炭窯側庭部出土)
 5. 平瓶(M-19区出土)
 6.7. 2号製鉄炉炉壁
 8.9. 5号炭窯天井部片

1. ナラ類 (木炭6) | 150 μ C50 μ R100 μ T2. クスギ (木炭1) | 300 μ C75 μ R75 μ T3. クスギ (木炭5) | 300 μ C50 μ R100 μ T4. 広葉樹 (ブナ科?) (木炭9) | 300 μ C75 μ R150 μ T




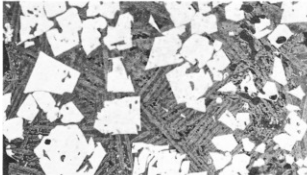


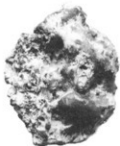
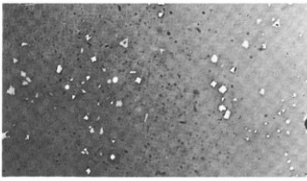


<p>(1) 2 X - 844 緑山遺跡 (1号製鉄炉出土) 砂鉄製錬滓 ×100 外観写真 1/2.6</p>		
<p>(2) 2 X - 845 緑山遺跡 (1号製鉄炉出土) 砂鉄製錬滓 ×100 外観写真 1/2.6</p>		
<p>(3) 2 X - 846 緑山遺跡 (1号製鉄炉出土) 砂鉄製錬滓 ×100 外観写真 1/2.6</p>		
<p>(4) P - 831 緑山遺跡 (1号製鉄炉出土) 砂鉄製錬滓 (ガラス質鉄滓) ×100 外観写真 1/2</p>		
<p>(5) P - 833 緑山遺跡 (1号製鉄炉出土) 小鉄塊融化物 ×100 外観写真 1/2</p>		

Photo. 1 鉄滓および鉄酸化物の顕微鏡組織

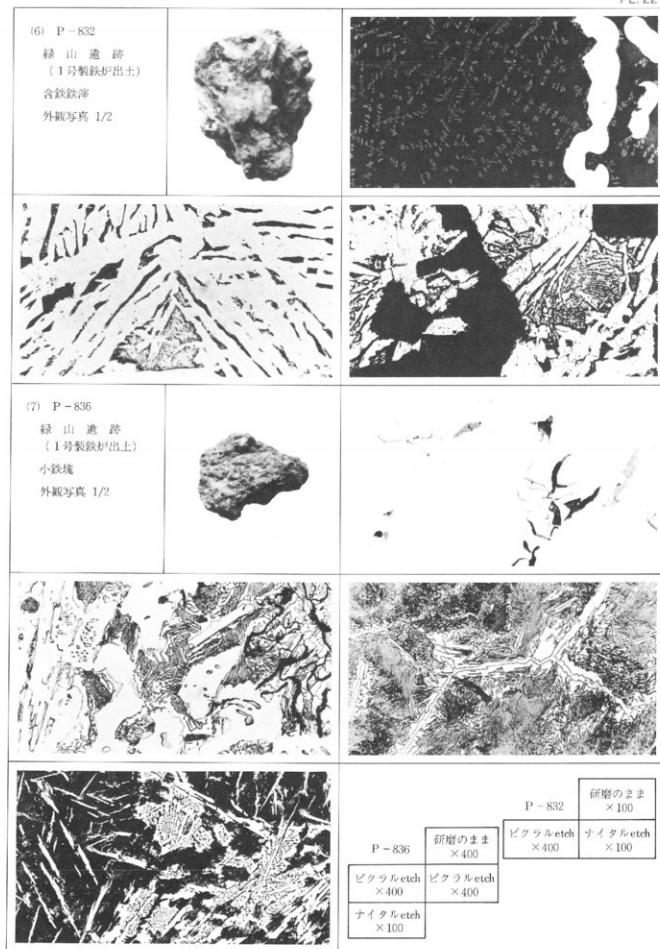


Photo. 2 含鉄鉄滓と小鉄塊の顕微鏡組織


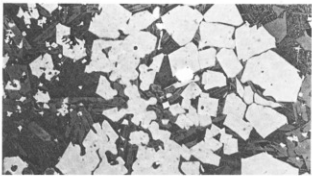
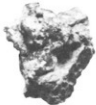
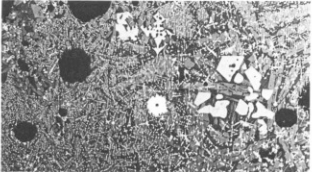


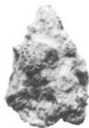
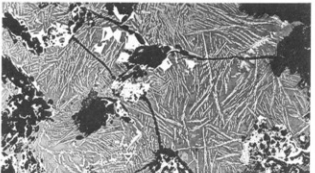

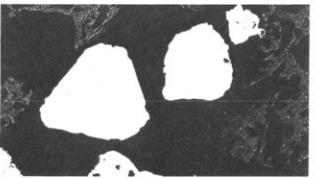
<p>(8) P-834 緑山遺跡 (1号製鉄炉出土) 砂鉄製錬滓 ×100 外觀写真 1/2</p>		
<p>(9) P-835 緑山遺跡 (1号製鉄炉出土) 砂鉄製錬滓 ×100 外觀写真 1/2</p>		
<p>(10) P-837 緑山遺跡 (1号製鉄炉出土) 砂鉄製錬滓 ×100 外觀写真 1/2</p>		
<p>(11) P-838 緑山遺跡 (1号製鉄炉出土) 砂鉄製錬滓 ×100 外觀写真 1/2</p>		
<p>(12) 2X-848 緑山遺跡 (1号製鉄炉出土) 砂鉄粒子 ×100</p>		

Photo. 3 鉄滓および砂鉄粒子の顕微鏡組織


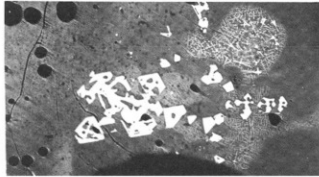

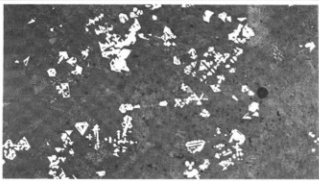

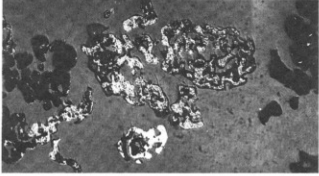

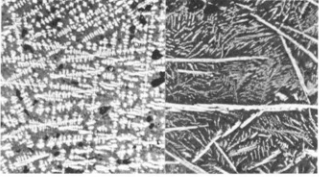

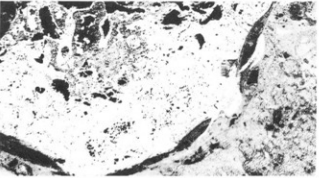
<p>03 2X-841 緑山遺跡 (2号製鉄炉出土) 砂鉄製錬滓 (ガラス質鉄滓) ×100 外観写真 1/2.6</p>		
<p>04 2X-842 緑山遺跡 (2号製鉄炉出土) 砂鉄製錬滓 (ガラス質鉄滓) ×100 外観写真 1/2.6</p>		
<p>05 2X-843A 緑山遺跡 (2号製鉄炉出土) 砂鉄製錬滓 (ガラス質鉄滓) ×400 外観写真 1/2.6</p>		
<p>06 2X-843B 緑山遺跡 (2号製鉄炉出土) 砂鉄製錬滓 ×400 外観写真 1/2.6</p>		
<p>07 2X-843C 緑山遺跡 (2号製鉄炉出土) 小鉄塊酸化物 ×100 外観写真 1/2.6</p>		

Photo. 4 鉄滓と鉄酸化物の顕微鏡組織

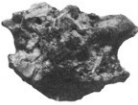
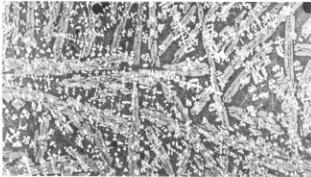

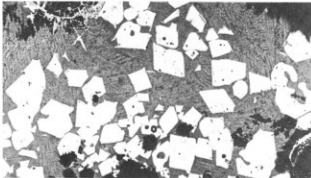
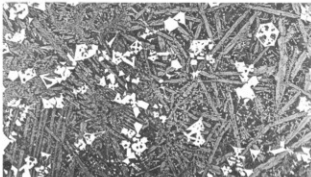



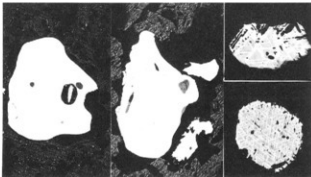
<p>⑩ 2 B - 821 緑山遺跡 (2号製鉄炉出土) 砂鉄製鉄滓 ×100 外観写真 1/2.6</p>		
<p>⑪ 2 B - 822 緑山遺跡 (2号製鉄炉出土) 砂鉄製鉄滓 ×100 外観写真 1/2</p>		
<p>⑫ 2 B - 823 緑山遺跡 (2号製鉄炉出土) 砂鉄製鉄滓 ×100 外観写真 1/2</p>		
<p>⑬ 2 B - 824 緑山遺跡 (2号製鉄炉出土) 砂鉄製鉄滓 ×100 外観写真 1/2</p>		
<p>⑭ 2 X - 847 緑山遺跡 (2号製鉄炉出土) 砂鉄粒子 ×100</p>		

Photo. 5 鉄滓および砂鉄粒子の顕微鏡組織

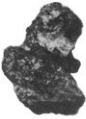
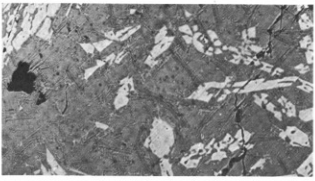


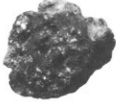
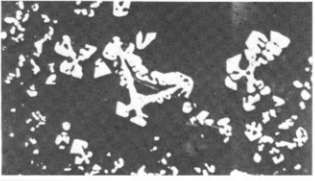

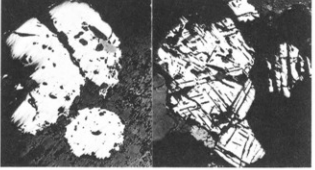
<p>23 2 X - 840A 緑山遺跡 (A 1号墳出土) 砂鉄製鈍滓 (ガラス質鉄滓) ×100 外観写真 1/2.6</p>		
<p>24 2 X - 840B 緑山遺跡 (A 1号墳出土) 砂鉄製鈍滓 (ガラス質鉄滓) ×100 外観写真 1/2.6</p>		
<p>25 2 X - 8402 緑山遺跡 (A 1号墳出土) 砂鉄製鈍滓 (ガラス質鉄滓) ×100 外観写真 1/2.6</p>		
<p>26 2 X - 849 加茂川砂鉄 ×100</p>		
<p>27 P - 839 加茂川砂鉄 ×100</p>		

Photo. 6 鉄滓および砂鉄粒子の顕微鏡組織

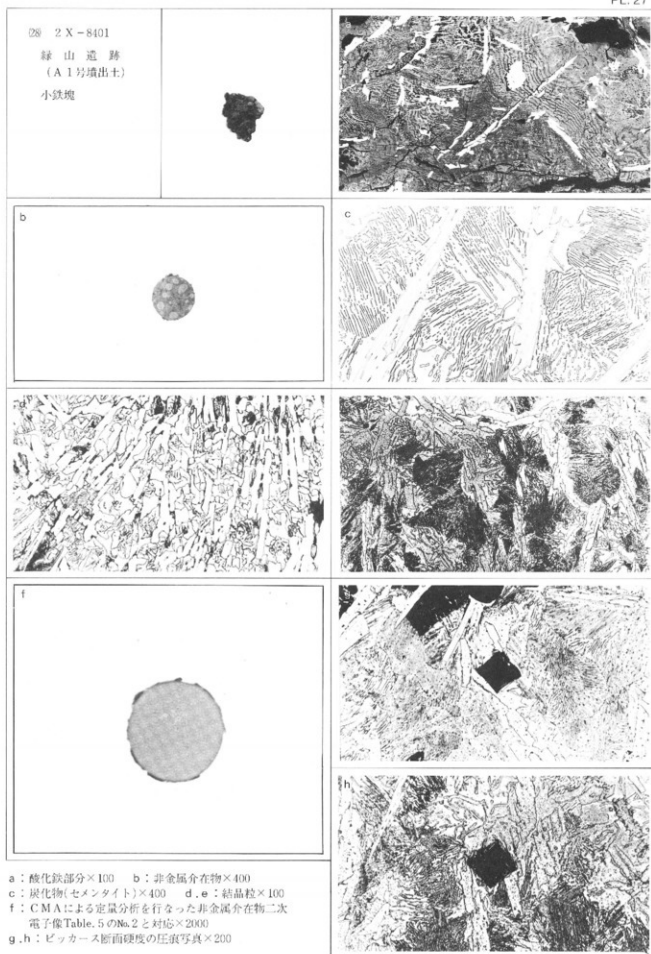
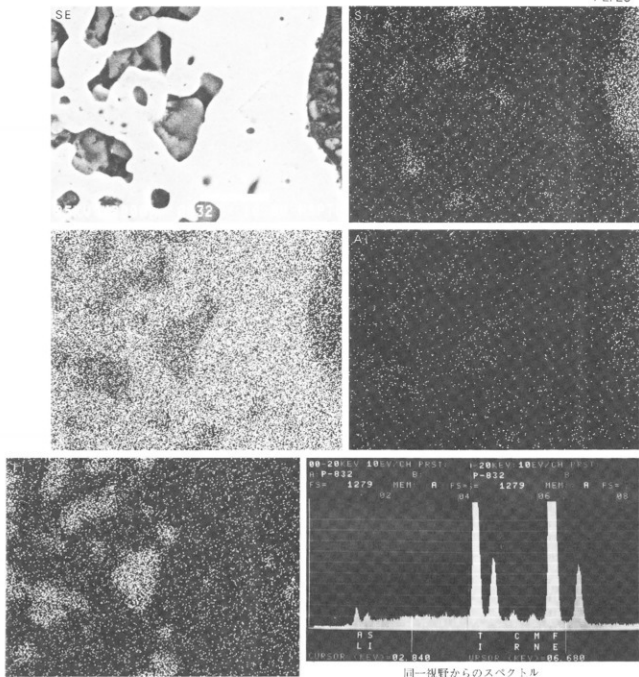


Photo. 7 AI号墳出土小鉄塊(2X-8401)の顕微鏡組織および非金属介在物の二次電子像とビッカース断面硬度圧痕



同一視野からのスペクトル

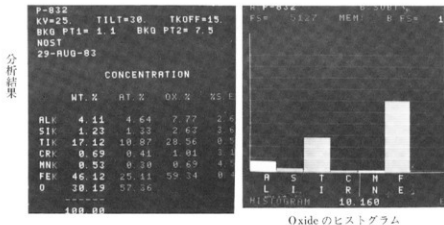
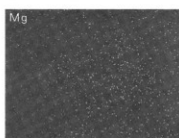
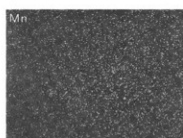
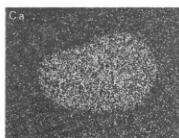
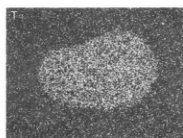
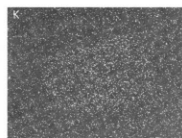
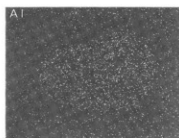
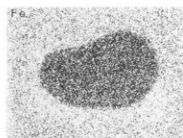
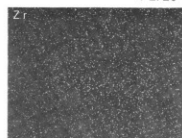
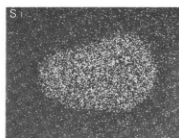
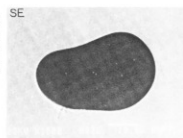


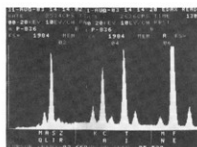
Photo. 8 緩部結山1号製鉄が出土含鉄鉄滓 (P-832) 中非金属介在物の特性X線像とエネルギー分散結果

二次電子像



綾部緑山1号製鉄炉出土小鉄塊
(P-836)の非金属介在物の走査X線像

×750

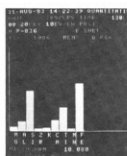


同一視野からのスペクトル

P-836 TILT43B 16OFF+15
WD 17.1mm X 5.0k WD P24 P 5
MODE
31-AUG-83

CONCENTRATION			
WT %	AT %	OX %	SI
NOI	1.55	1.67	2.57
AL	7.09	1.49	5.50
SI	57.84	12.32	47.52
ZR	1.46	0.42	1.07
Ca	1.52	0.40	1.92
CR	5.48	1.59	7.07
Ti	9.77	2.17	11.94
MN	1.44	0.50	1.94
FE	25.64	12.02	37.67
Mg	16.49	7.54	

分析結果



Oxideのヒストグラム

綾部緑山1号製鉄炉出土小鉄塊 (P-836)の非金属介在物のエネルギー分析結果

Photo. 9 綾部緑山1号製鉄炉出土小鉄塊 (P-836)の非金属介在物走査X線像及びエネルギー分散分析結果

緑 山 遺 跡

津山市埋蔵文化財発掘調査報告第19集

1986年3月31日

発行 津山市教育委員会

岡山県津山市山北520

印刷 株式会社 広陽本社

岡山県津山市田町22