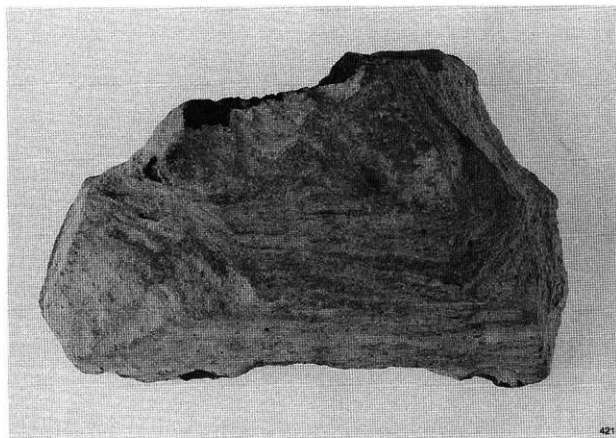


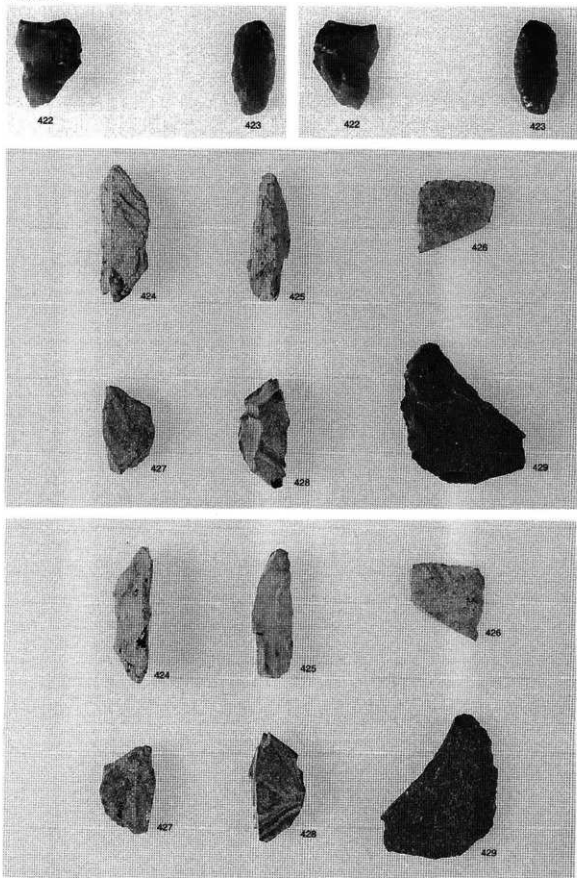
421



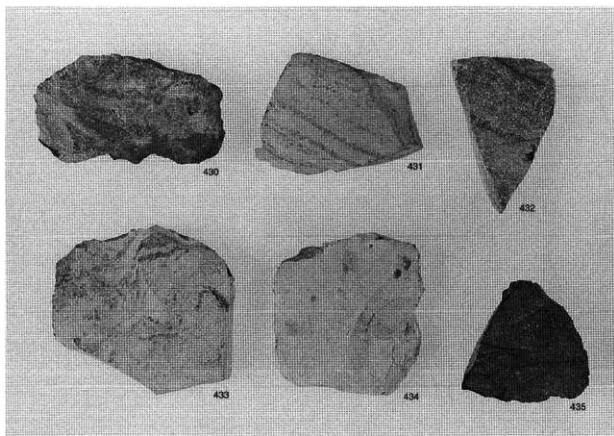
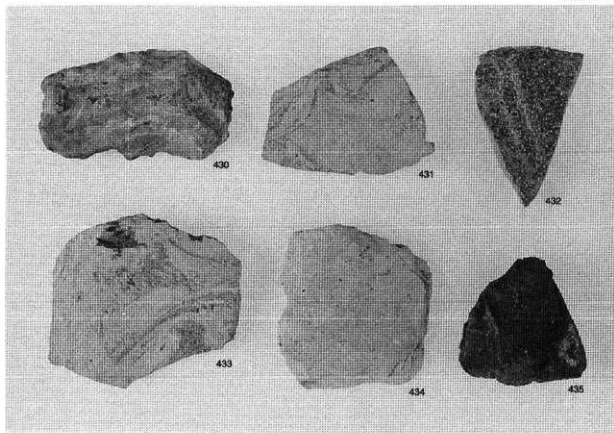
421

石核 (約2/3)

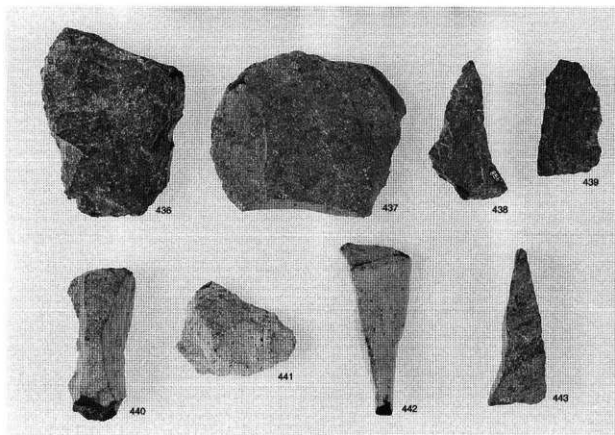
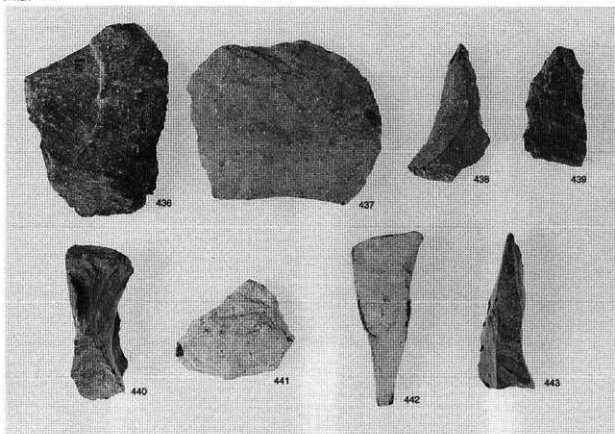
图版 38



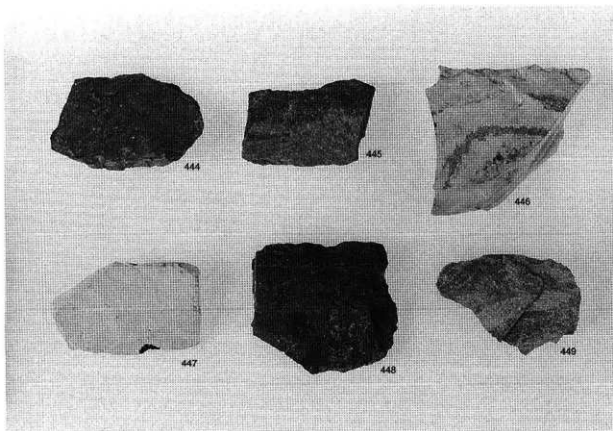
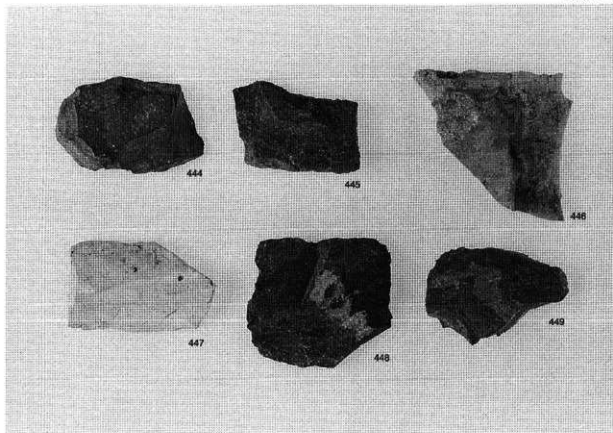
楔形石器 (約1/1・2/3)



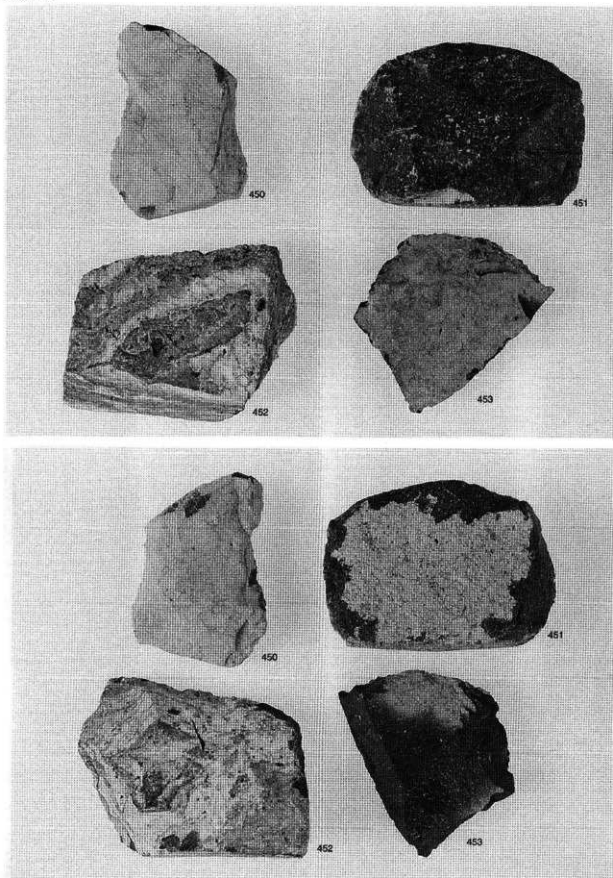
楔形石器 (約2/3)



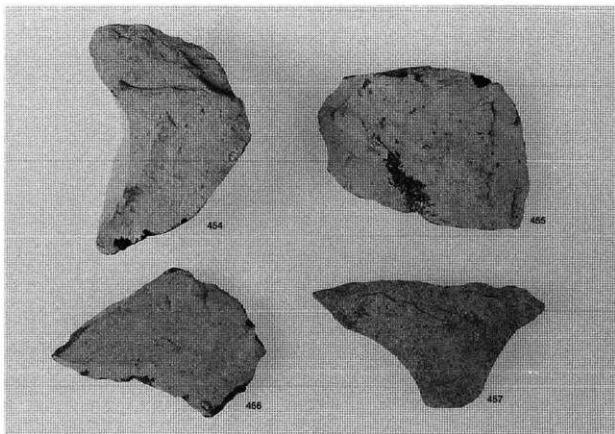
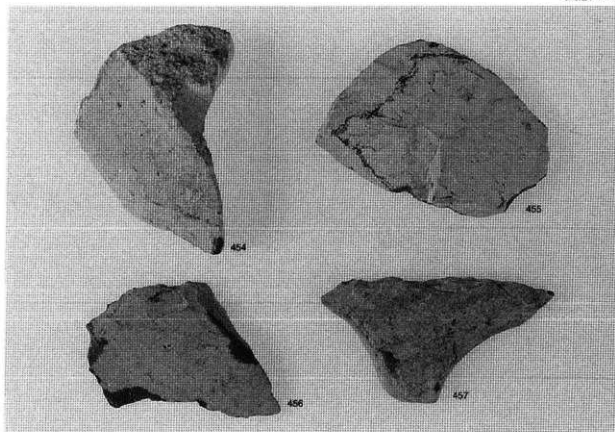
楔形石器 (約2/3)



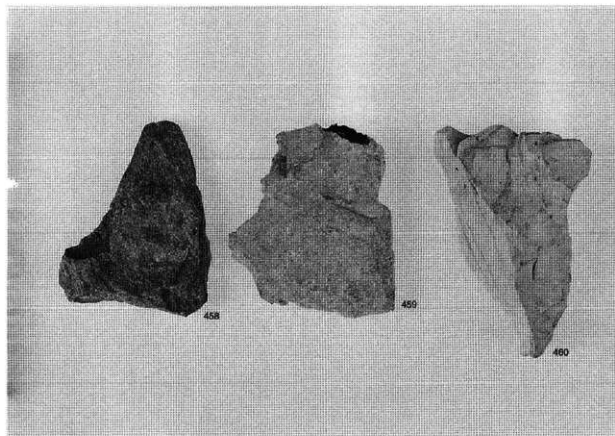
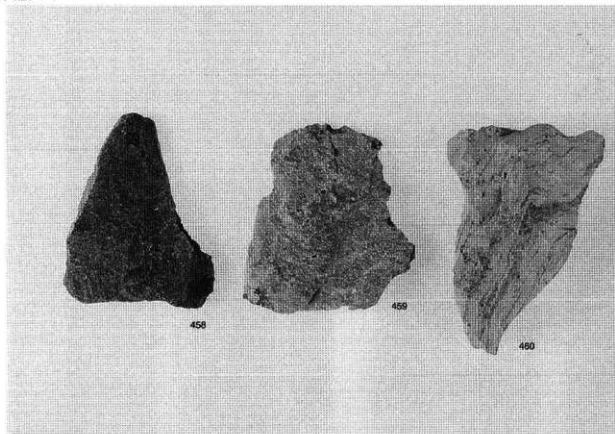
楔形石器 (約2/3)



楔形石器 (約2/3)

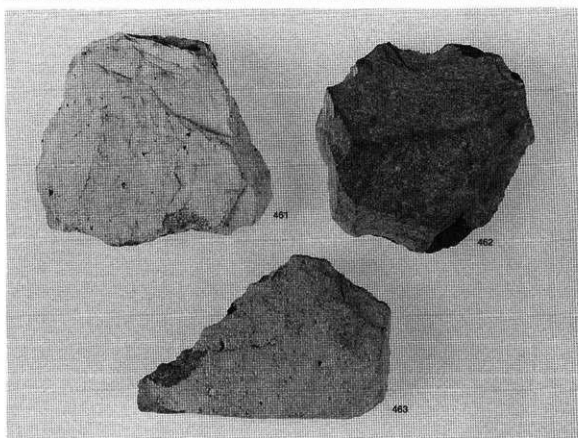
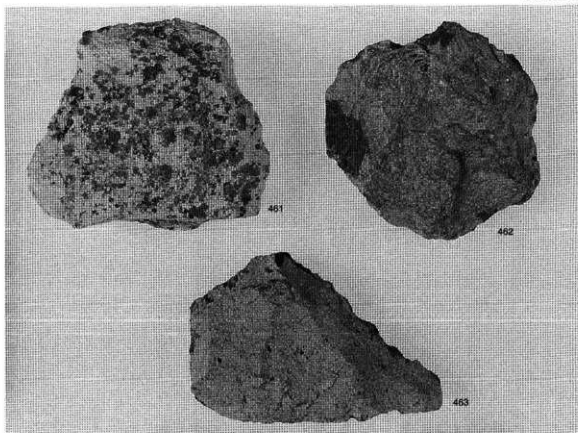


楔形石器 (約2/3)

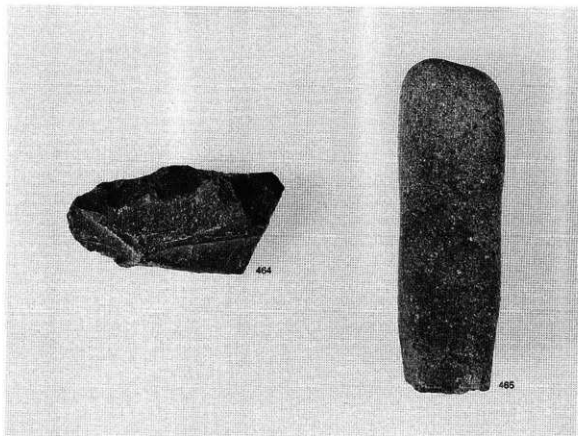
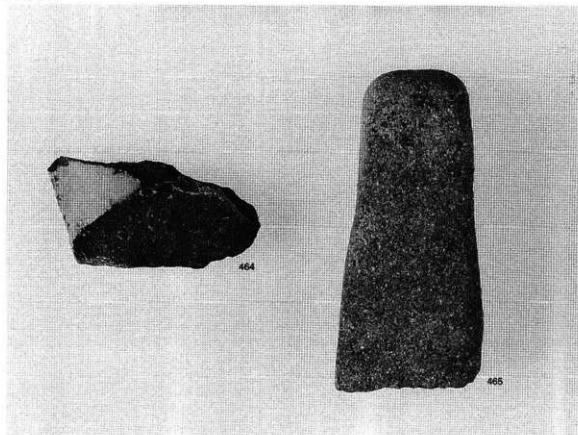


楔形石器 (約2/3)





楔形石器 (約2/3)



火打ち石・礮石（約2/3）