

SB3005



17



14

SB3008



18-1

18-3



21-1

21-2



19-1

19-2

19-3

SB3012



23-1



25-1

25-7



23-2



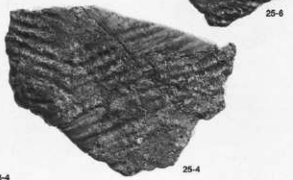
25-5

25-3



23-3

23-4



25-6

25-4

SB3012 (22)

SF3508 (28)



22-6



22-7



22-1



22-4



22-8



22-3



22-2



22-9



28

SB3011 (29,30)

SQ3052 (36)



29



36



30



SQ3052



33-7



33-5



33-1



33-2



33-3



33-6



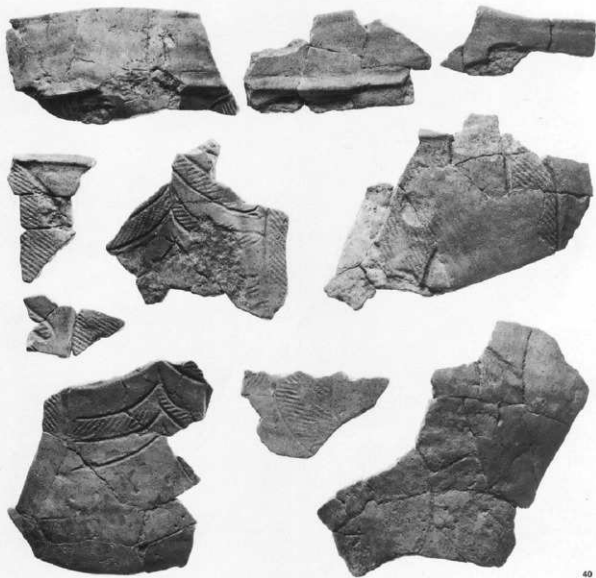
SQ3053



SQ3058



SQ3059



40

SQ3057



41-1

41-2

42-1

41-3

42-2

42-3

42-4

41-4

SQ3061



47-1



47-3

47-5



47-7

47-6

SQ3060



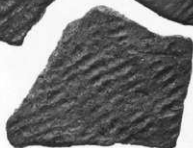
46-7

46-1



46-4

SK3049



46-2



53

SK3004 (52)

SK3091 (56)

加曾利E式期包含層

SK (58)



52



56

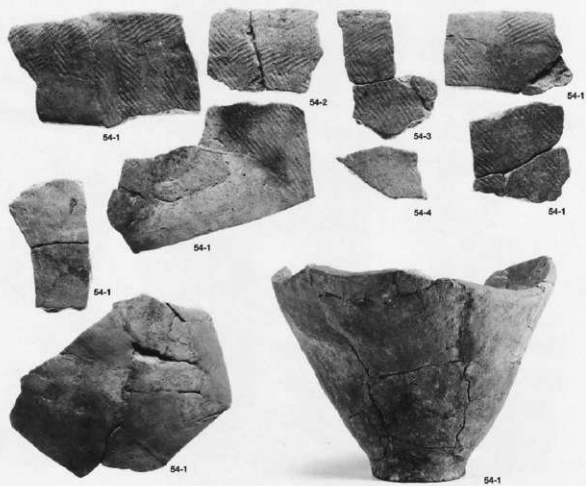


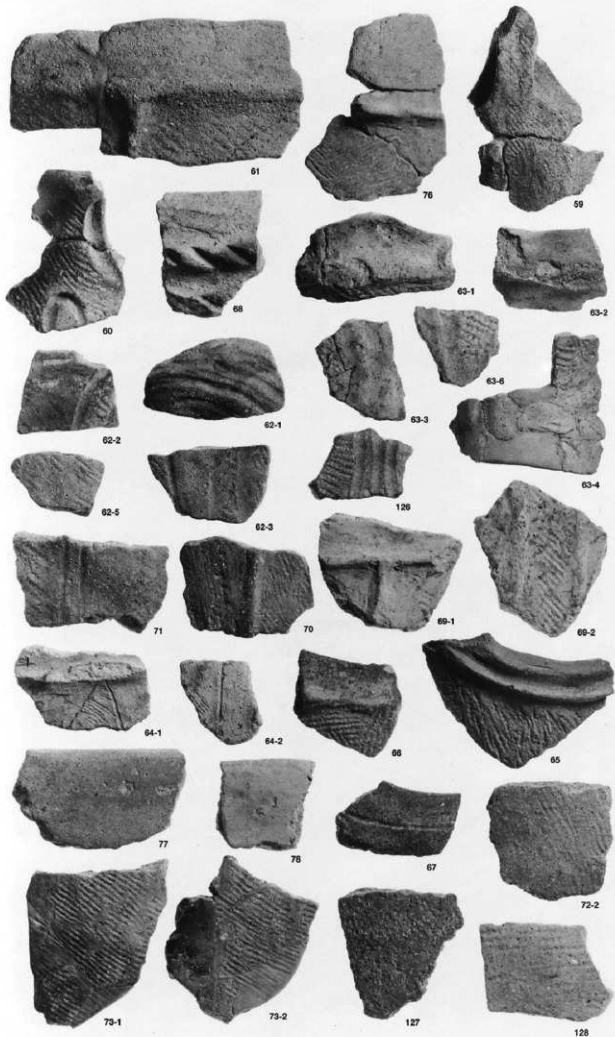
58

SK3001



SK3067





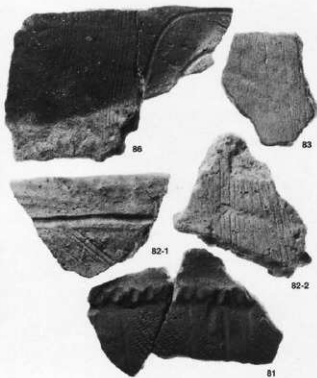
中期末葉～後期前葉 遺構外出土土器 2

第IX群土器

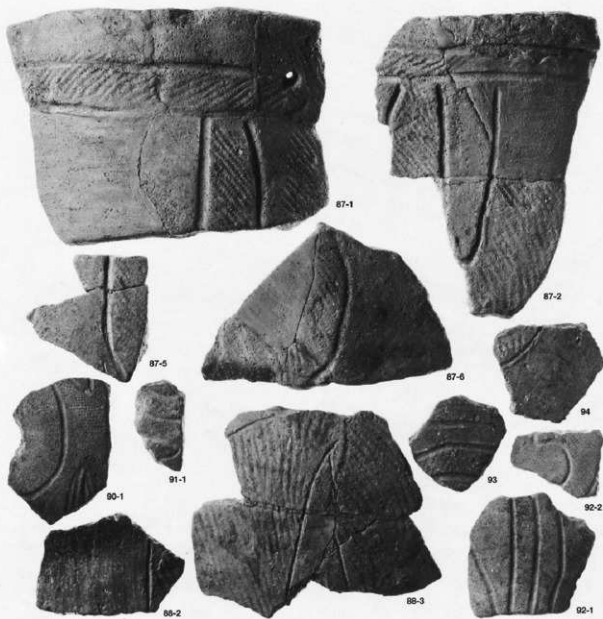
(74・75・79・80)

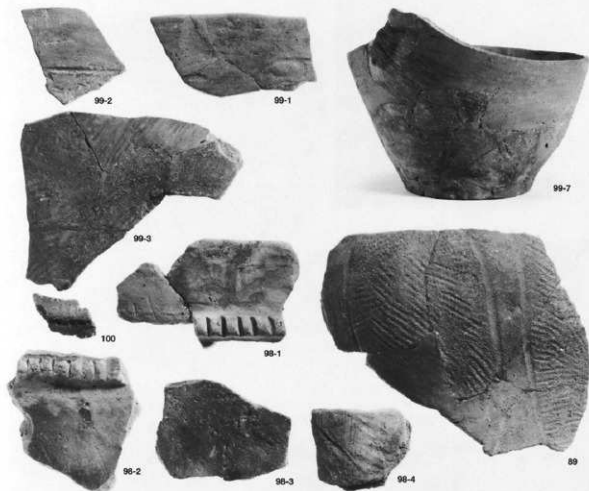
第X群土器

(81-83・86)

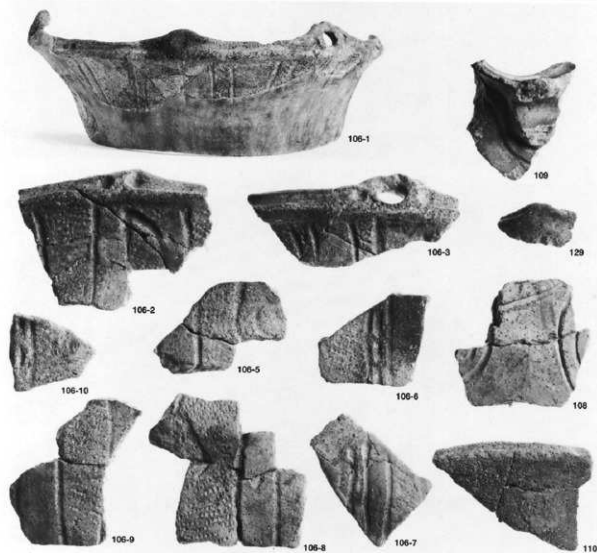


第XI群土器

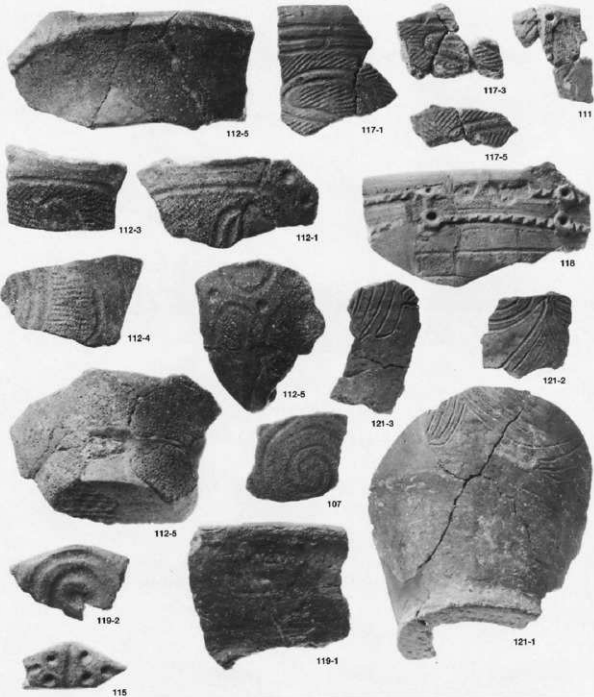




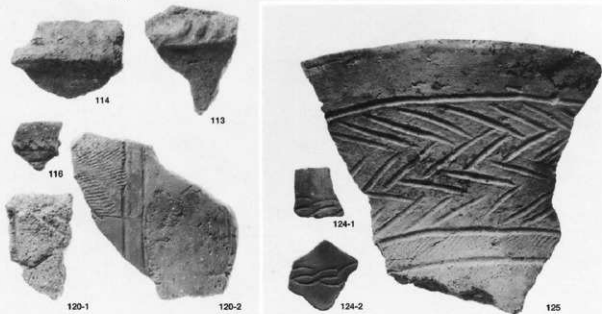
第Ⅺ群土器



第Ⅱ群土器



第Ⅲ群土器
(124・125)



原石・石核

1. WY17-32
2. WY17-31
3. WY19-130
4. WX5-1242
5. WX5-678
7. WY6-5127
8. SK8057
9. SK8035
11. SK8021
12. WY6-288
13. WX5-382
14. SB8001
15. WY19-126



1



2



4



5



3



11



7



12



8



9



14



15



13

製片A類

16. MX5-311

17. MY1-706

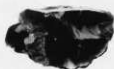


16



17

製片B類





石鏃・石錐

1. WX5-440
2. WS24-47
3. WX5-108
4. WY1-452
5. WY25-95
6. SF8005
7. WX10-1278
8. WX4-3
9. WX4-68
10. WY24-2
11. WY13-197
12. WY6-162
13. SF8006
14. WY18-30
15. SK8035
16. WY6-451
17. SD102
18. SK8015
19. WY11-23
20. WY1-270
21. WY11-342

磨石

1. WY11-428
2. WX5-719
3. WY18-221
4. WY1-735
5. WY11-12
6. WY11-168
7. WX5-691
8. WX5-535
9. WX4-22
10. WY1-689
11. WY18-69



1



2



3



4



5



6



7



8



9



10



11

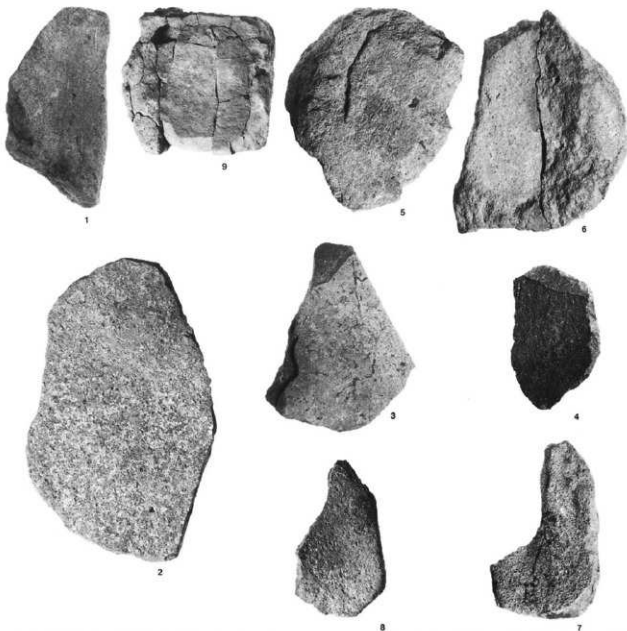


凹石・敲石

12. WX5-1111
 13. WY19-161
 14. WX5-952
 15. WY16-2
 16. WY11-352
 17. ㊸-1
 18. WX5-1041
 19. SD102
 20. WY6-293
 21. WY11-436
 22. WX5-230
 23. WX5-1369
 24. WY19-171
 25. WX5-525
 26. WX5-1045

台石・石皿

1. SK8507
2. WX5-1322
3. WY12-148
4. ㊦-1
5. SF8014
6. WX5-1261
7. WX5-1176
8. WX10-346
9. SF8008



装飾品

4. ㊦-3
5. WY11-126
6. WY12-98
7. WY19-90
8. WY11-7
9. WS25-53
10. WY7-98
11. WY6-1
12. WY1-288

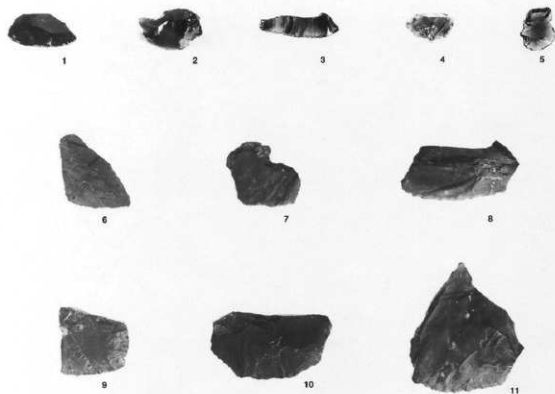
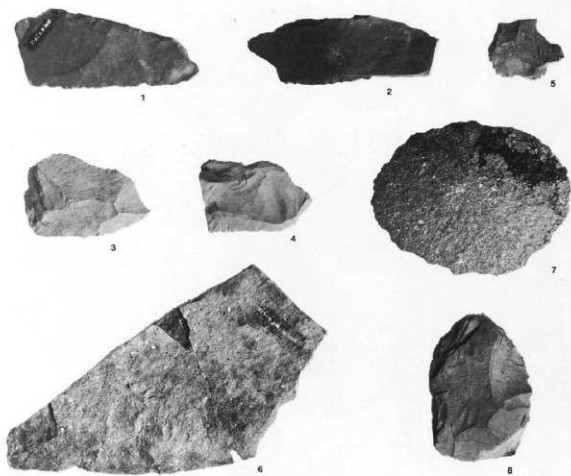


大形石器

1. ㊸-3
2. WY6-300
3. WY19-172
4. WS25-84
5. WX10-1268
6. WY6-476
7. SK8057

打製石斧

8. ㊸-1



小形石器

1. WX5-1007
2. WY6-723
3. SF8038
4. WY12-95
5. WY7-58
6. WX5-692
7. WY11-425
8. SF8038
9. SK8024
10. WY-18
11. SK8003

石器

1. MX10-296
2. WY6-644
3. WX5-28
4. WX5-1
5. WY12-133
6. WY25-76
7. WY6-35
8. WX5-1241
9. WY19-101
10. WY1-660
11. WY11-408
12. MX10-1264
13. WY12-454
16. MX4-86



1



2



3



4



5



6



7



8



13



11



9



12



10



16

石 匙

14. MY19-101

15. MS24-18

17. MY12-16

18. WX5-861

19. MY6-83

20. SK8060

21. WX5-1257

22. WX4-2

23. MY12-464

24. WX10-358

25. WX5-1156



14



17



15



18



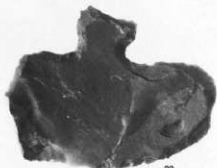
19



20



21



22



23

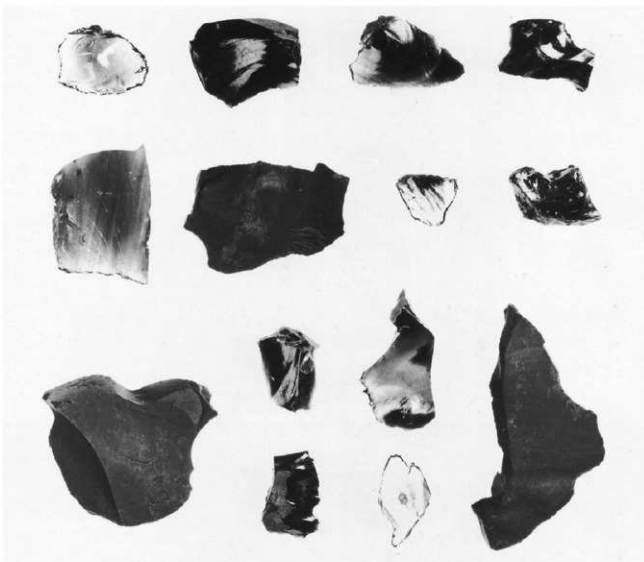


24



25

小形刃器



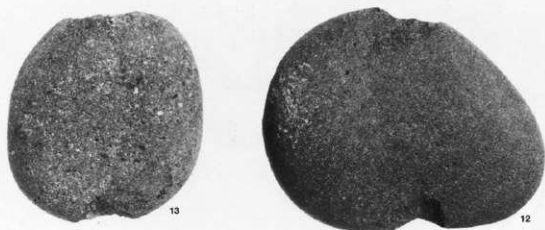
磨製石斧

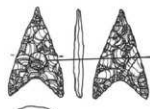
1. WY11-176
2. WX5-767
3. WT21-4



石 錘

12. WX5-1265
13. WX5-5





1



X25

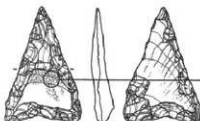


1b

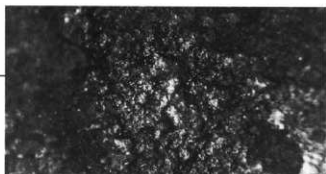
X50

使用痕写真1
石鏃

1. WY13-197
図版169-11
PL80-11
(基部摩耗痕)



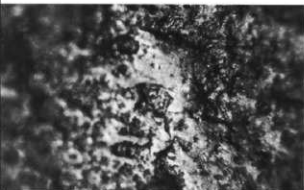
2



2a

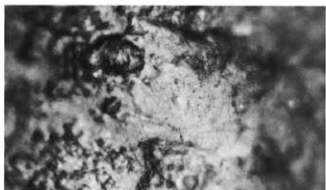
X12.5

2. WY1-452
図版169-4
PL80-4
(2a 付着物)
(2b,c 基部摩耗痕)



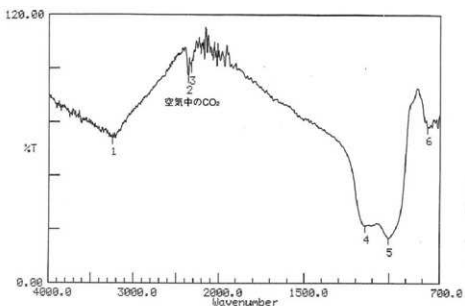
2b

X25



2c

X50



Condition
upper 120.00 lower 0.00 depth 1.00

Peak table

1:	3248.42 (64.6)	2:	2357.23 (92.5)	3:	2324.43 (96.7)
4:	1141.96 (25.4)	5:	1085.00 (19.9)	6:	771.60 (69.6)

FT-IRスペクトル

3. WY17-22
(付着物)



3

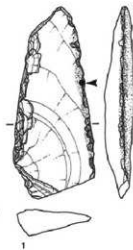
使用痕写真2

大形刃器2ア類

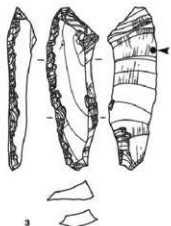
1. ⑧-3
図版173-1
PL84-1
(線状痕)

大形刃器2イ類

2. MS25-84
図版173-4
PL84-4
(摩耗・光沢痕)



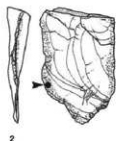
1a X25



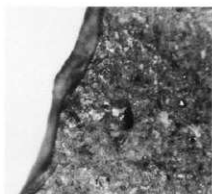
3a X25

小形刃器

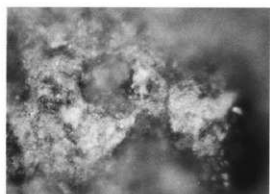
3. SF8038
図版174-3
PL84-3
(潰れ痕)



2

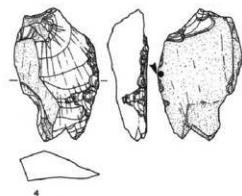


2a X12.5

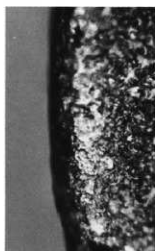


2b X25

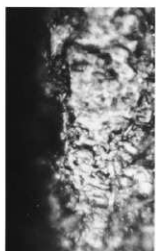
4. WY6-723
図版174-2
PL84-2
(摩耗痕)



4

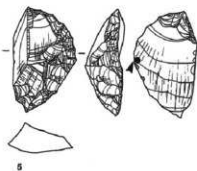


4a X25



4b X50

5. WY12-95
図版174-4
PL84-4
(摩耗痕)



5



5a X25



5b X50

使用痕写真3

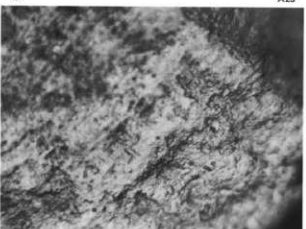
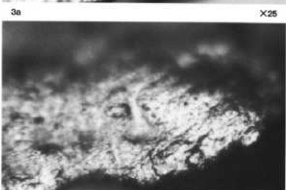
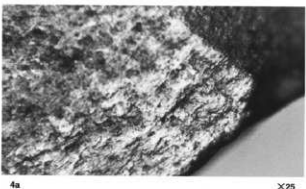
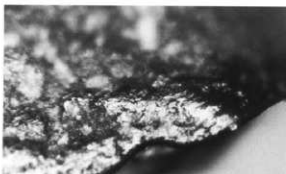
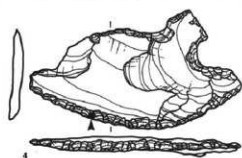
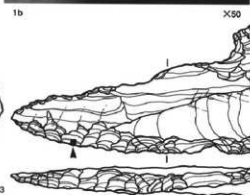
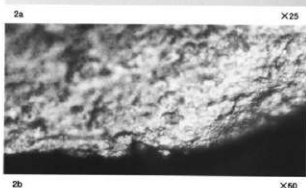
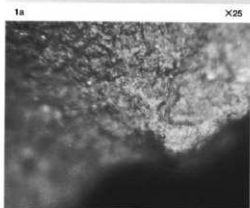
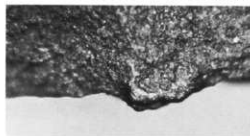
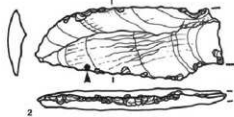
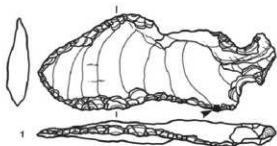
石匙

1. WX10-296
 図版175-1
 PL85-1
 (摩耗・光沢痕)

2. WX5-28
 図版175-3
 PL85-3
 (摩耗・線状痕)

3. WY25-76
 図版175-6
 PL85-6
 (摩耗・線状痕)

4. WY6-35
 図版175-7
 PL85-7
 (摩耗・線状痕)



3b X50

4b X50

使用痕写真4

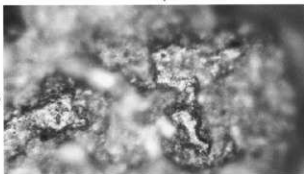
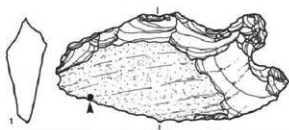
石匙

1. WIX5-1241

図版175-8

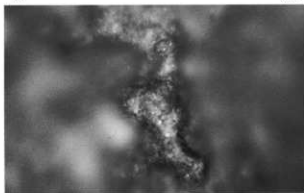
PL85-8

(摩耗痕)



1a

X25



1b

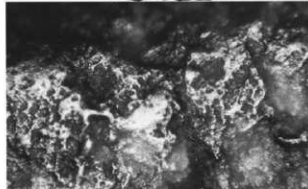
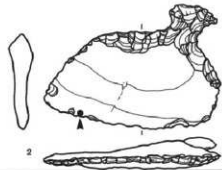
X50

2. WY19-101

図版176-9

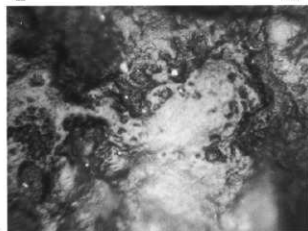
PL85-9

(摩耗・光沢痕)



2a

X25



2b

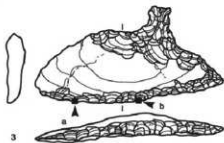
X50

3. WY12-454

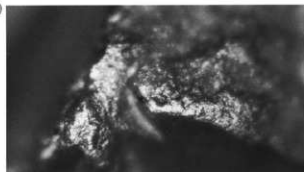
図版176-13

PL85-13

(摩耗痕)

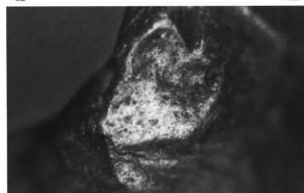


3



3a

X25



3b

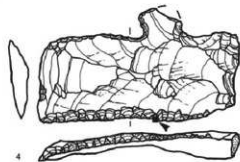
X25

4. WY12-16

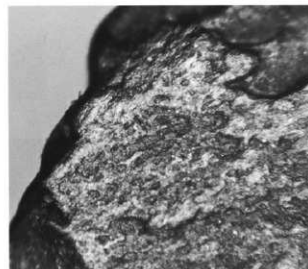
図版176-17

PL86-17

(摩耗・楕状痕)

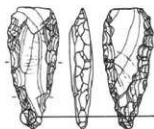


4



4a

X25

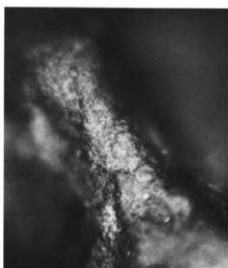


1



1a

X25



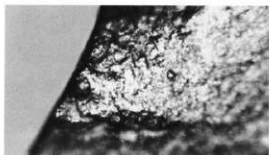
1b

X50

使用痕写真5

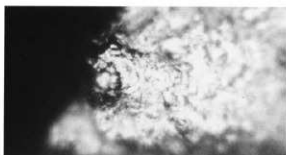
石錐

1. WY11-342
図版169-21
PL80-21
(摩耗痕)



2a

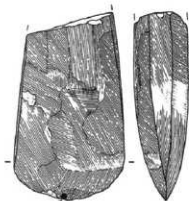
X25



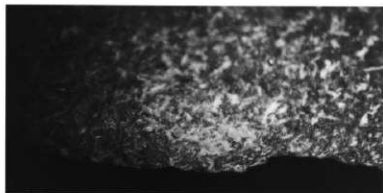
2b

X50

2. SF8038
(摩耗痕)



3

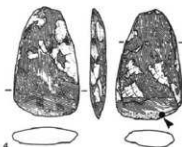


3a

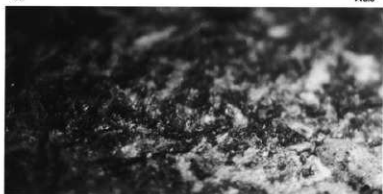
X3.3

磨製石斧

3. WY11-176
図版178-1
PL87-1
(摩耗・線状痕)



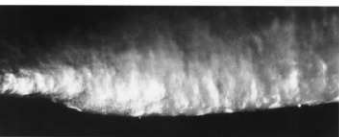
4



3b

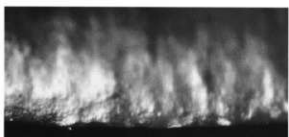
X10

4. WT21-4
図版178-3
PL87-3
(摩耗・線状痕)



4a

X5



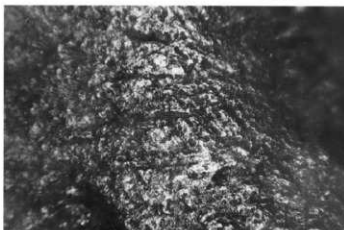
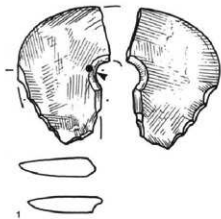
4b

X10

使用痕写真6

块状耳飾

1. ⑧-3
 図版178-4
 PL83-4
 (研摩痕)

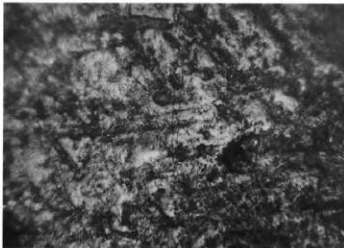
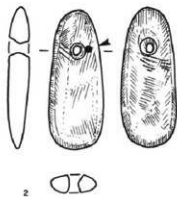


1a

X12.5

垂飾

2. W525-53
 図版178-9
 PL83-9
 (研摩痕)



1b

X25



2a

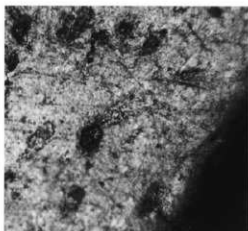
X12.5



2b

X25

3. WY7-98
 図版178-10
 PL83-10
 (研摩痕)

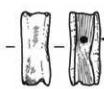


3

X25

管玉

4. WY1-288
 図版178-12
 PL83-12
 (研摩痕)



4



4

X12.5

原石・石核

1. SB3024
2. SB3024
3. SB3024
4. VU22-42
5. VU22-42
6. SB3017
7. IVY12-48
8. IIIA1-19
9. IIIA11-7
10. IVY20-12
11. SF1005
12. SB3009
13. SQ9010
14. IVY20-15



1



2



3



4



5



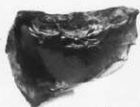
6



7



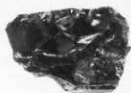
8



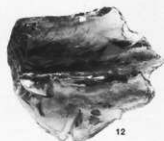
9



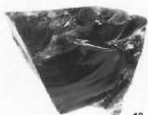
10



11



12



13



14

黑曜石系

製片A類

1. VU21-11
2. VU21-19

製片B類

3. SB1167
4. SB3027
5. SB1173
6. SF3033
7. SB1173
8. SB3026
9. VU16-17
10. SQ3034
11. IVY13-52
12. IIIA44-2
13. SQ3043
14. SQ3043
15. SQ3034



頁岩系

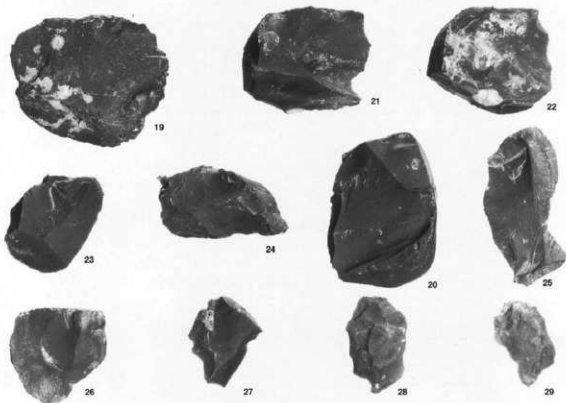
石核

16. SF3114
17. IVY20-5



製片B類

18. IVY20-12
19. IVY25-10
20. IVY25-9
21. IVY20-12
22. IVY20-13
23. VU18-26
24. SQ3023
25. SB3014
26. ㊦-1
27. IIIA11-60
28. IVY19-37
29. SB3024





30



31



32



33



34



35



36



37



38



39



40



41



42



43



44



45



46

チャート(赤)系

原石・石核

30. IVY24-11

31. IVY25-4

製片A類

32. II E-8

33. V U21-22

34. III A7-28

製片B類

36. SF3119

37. IVT24-16

38. IVY10-51

39. V U23-19

40. III A2-40

41. V U23-59

42. IVY8-62

43. V U18-42

44. SK3219

45. III A1-19

46. SK3204

製片1種

35. III A2-40

チャート系

製片A類

47. SB3021

製片B類

49. IVY14-38

50. SQ3038

51. IVY15-37

52. IVY5-58

53. II E15-18

54. IVY25-28

55. III A6-59

56. IVY19-31

57. SF3110

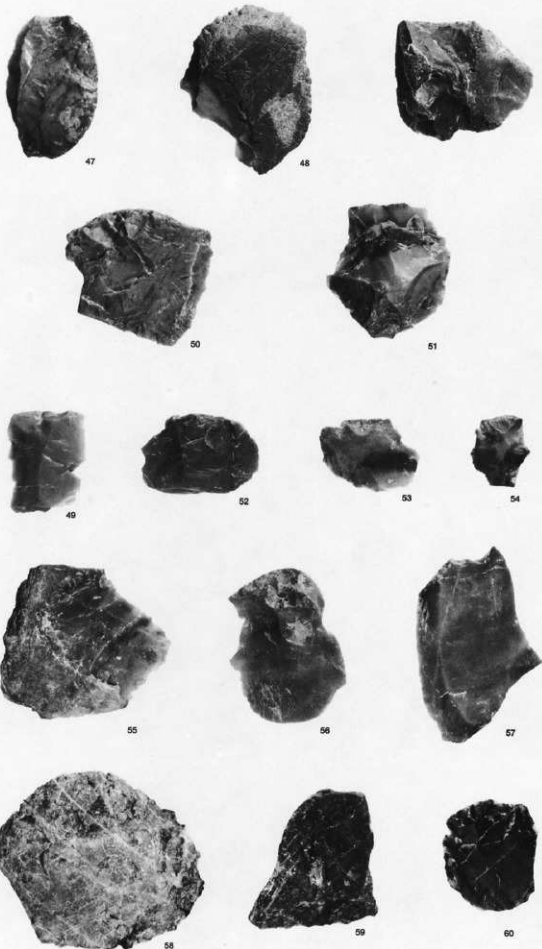
59. IVY10-24

60. IVY25-43

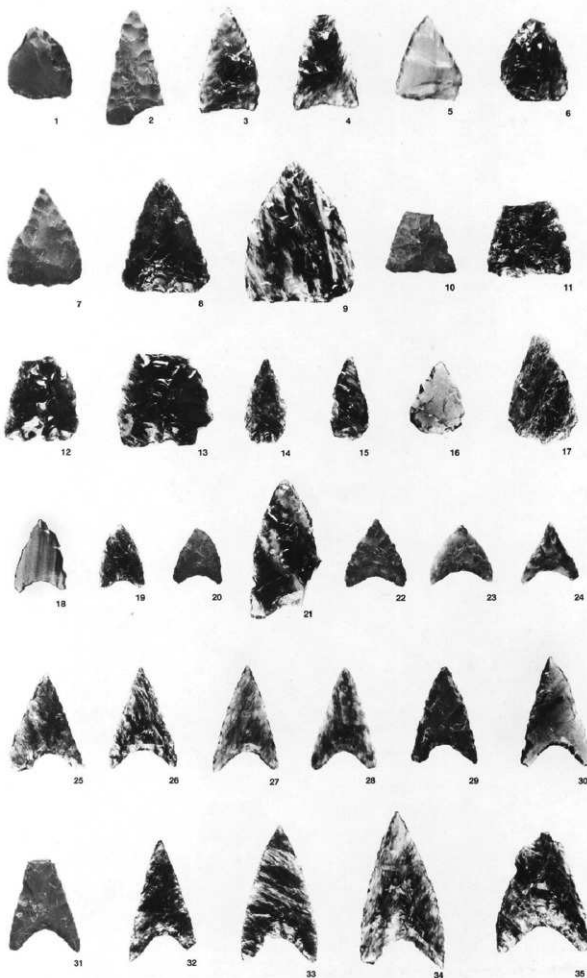
製片1種

48. SB3021

58. IVY5-57



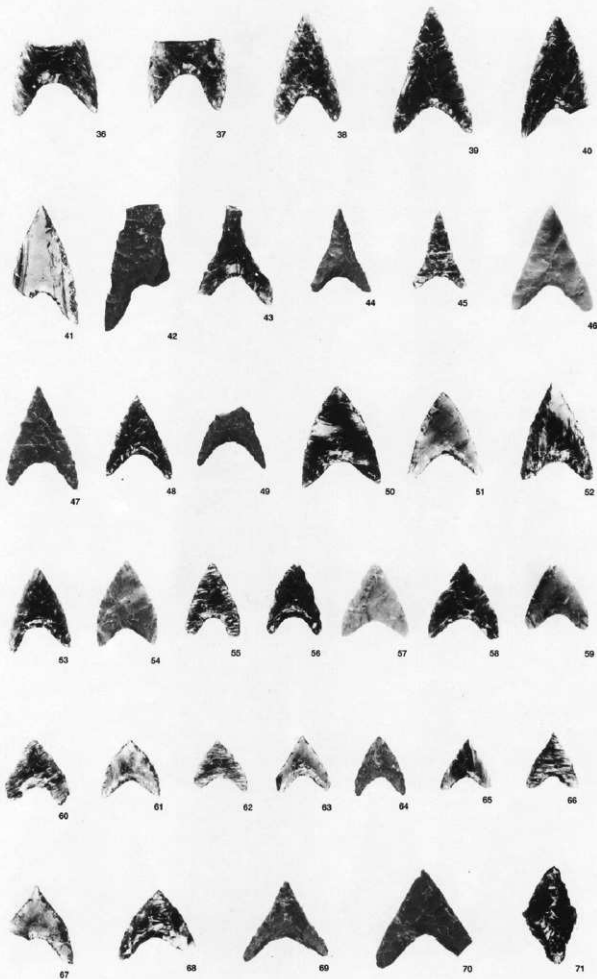
石 鏃



1. II E10-16
2. IVY19-53
3. VU16-29
4. SQ3033
5. SB3009
6. IVY13-42
7. SB3013
8. VU16-56
9. III A3-11
10. III A11-46
11. SQ3033
12. VU22-63
13. IVY25-18
14. SB3010
15. SF3126
16. SK3169
17. SB1173
18. IVT19-62
19. SB3014
20. II E19-22
21. III A1-35
22. IVY13-18
23. II E20-5
24. II E19-15
25. VU22-38
26. IVY20-47
27. SQ3012
28. ㊦-2
29. SK3230
30. SQ3033
31. VU16-18
32. III A6-52
33. VU22-32
34. IVY19-33
35. VU17-42

石 鏃

- 36. II E3-1
- 37. SB1173
- 38. SB1173
- 39. SB3023
- 40. SQ3003
- 41. V U19-18
- 42. III A2-15
- 43. IV Y12-48
- 44. III A2-23
- 45. II E5-14
- 46. V P4-43
- 47. ㊦-3
- 48. IV Y12-48
- 49. II E10-61
- 50. IV Y25-28
- 51. SQ3038
- 52. IV Y20-54
- 53. III A6-43
- 54. IV Y25-28
- 55. II E5-63
- 56. SF1005
- 57. SQ3050
- 58. IV Y18-18
- 59. IV Y8-54
- 60. III A6-60
- 61. SB1173
- 62. IV T24-36
- 63. III A2-21
- 64. SB3030
- 65. SB3015
- 66. II E15-18
- 67. SB3028
- 68. V U21-26
- 69. IV Y24-23
- 70. V U16-18
- 71. IV Y20-57



打製石斧

1. NY5-58
2. SB1173
3. ㊦-15
4. NY5-49
5. NY13-41
6. VU8-37
7. SQ3025
8. NY19-64
9. VU21-22
10. VU18-47
11. NY25-41
12. NT19-52



1



2



4



6



5



3



7



8



9



10



11



12

打製石斧

PL100-4

a. NY5-49

b. NY15-38

c. SB3019

d. WY25-59

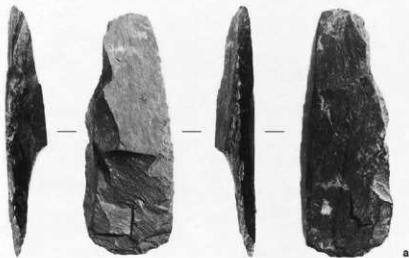
e. NY15-28



(表)

(裏)

打製石斧
PL100-4
(接合資料)



磨石

1. SB3010
2. IIIA1-57
3. VP23-26
4. IVY23-44
5. VU23-14
6. IVY20-45
7. VU21-12
8. VU18-55
9. IVY14-38
10. VU57-4
11. VU22-21
12. IIE10-20
13. IVY20-45
14. IVY17-19



1



2



3



4



5



6



7



8



9



10



11



12



13



14

凹石

15. IIIA11-7

16. VU17-19

17. II E4

18. VU21-32

19. ③-1

20. IVT20-9

21. IVT19-55

22. SF3122

23. VK14-60

24. SB3018

25. SF3133

26. IVY7-37



15



16



17



18



19



20



21



22



23



24



25



26

敲石

- 27. IVY20-59
- 28. SB1173
- 29. SB3009
- 30. IVY17-7
- 31. IIIA1-32
- 32. IVY20-24
- 33. IVY18-7
- 34. IIE4-54
- 35. IVY25-22
- 36. IVY23-19
- 37. IIIA2-49
- 38. IIE4-12
- 39. SB3013
- 40. SB3009
- 41. SB3021



石皿

1. VP4-55
2. NY17-55
3. NY12-56

台石

4. NY17-5



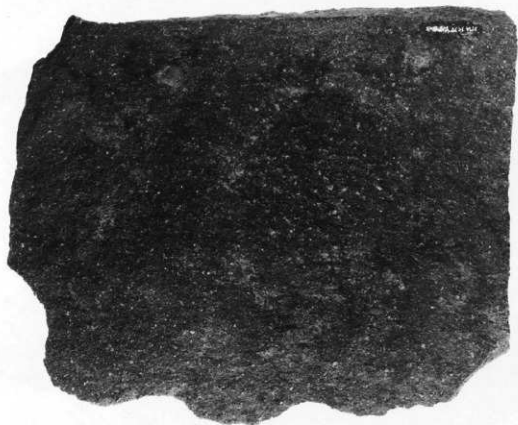
1



2



3



4

刃 器 (大形)

1. SB3010
2. IVY23-29
3. IVY12-48
4. II E10-26
5. VU1-3
6. SB3017
7. SB3019
8. IVY5-57
9. SB3021
10. III A1-62
11. II E5-8
12. IVY20-15
13. IVY23-43
14. III A2-35
15. IVY14-35



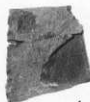
1



2



3



4



5



6



7



8



9



10



11



12



13



14



15

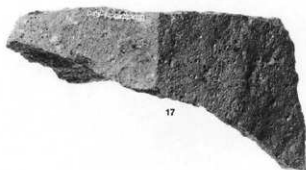
刃器 (大形)

16. II E5-30)接合
II E10-2

17. IV T24-56

18. IV Y8-14

19. IV Y19-15



17



18



19



16

刃 器 (大形)

20. II E20-2
 21. IV T24-5
 22. IV Y15-19
 23. IV T24-6
 24. IV Y16-7
 25. IV T19-52
 26. V U22-64
 27. ㊦-3
 28. SB3017
 29. V U4-29
 30. SB3028
 31. II E10-54
 32. ㊦-14
 33. III A2-33
 34. V U23-62
 35. SB3015
 36. SB3013
 37. IV Y25-10
 38. SB3017



20



21



22



23



24



25



26



27



29



28



32



30



31



33



34



35



36



37



38



39



40



42



41



45



43



44

刃器 (大形)

39. IVY24-5

40. V U7-10

41. SF3111

42. SB3021

43. IVY5-54

44. IVT25-32

45. ㊦-13

刃 器 (小形2類)

1. SB1173

2. II E4-45

3. IV Y19-60

4. SB1173

5. SB3025

6. SB3026

7. IV Y18-48

8. IV Y24-32

9. IV Y5-24
IV Y7-23)接合

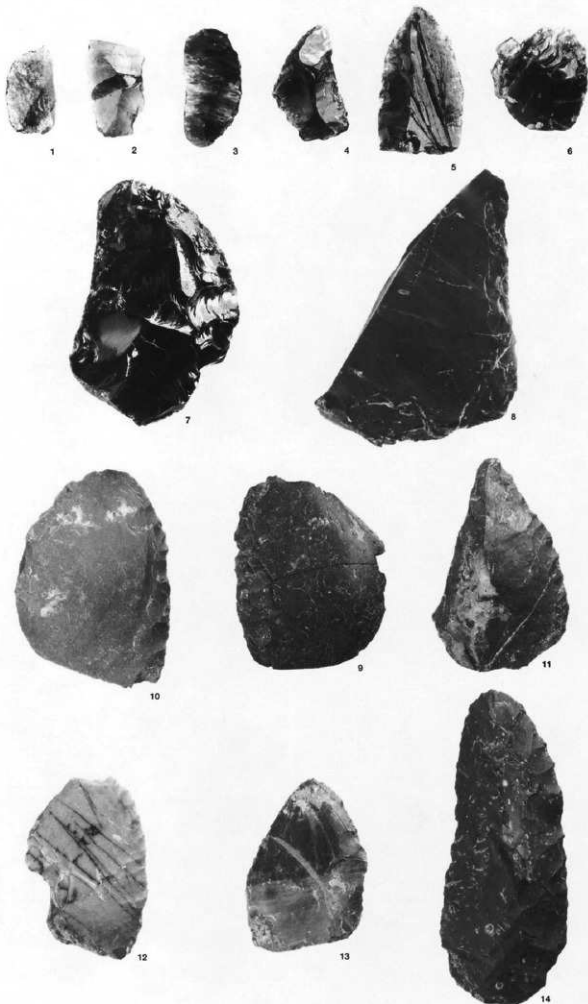
10. SB3009

11. V U17-17

12. III A1-45

13. II E10-39

14. III A3-5





15



16



17



18



19



20



21



22



23



24



25



26



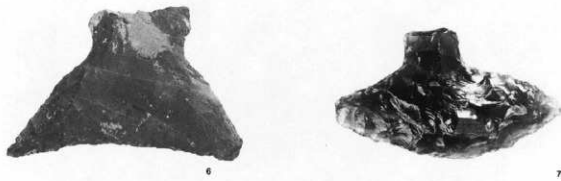
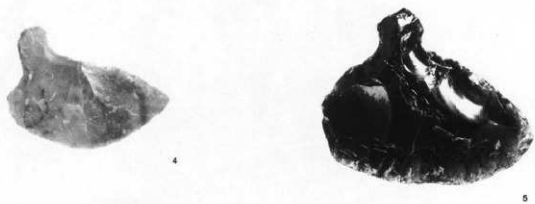
刃器 (小形2類)

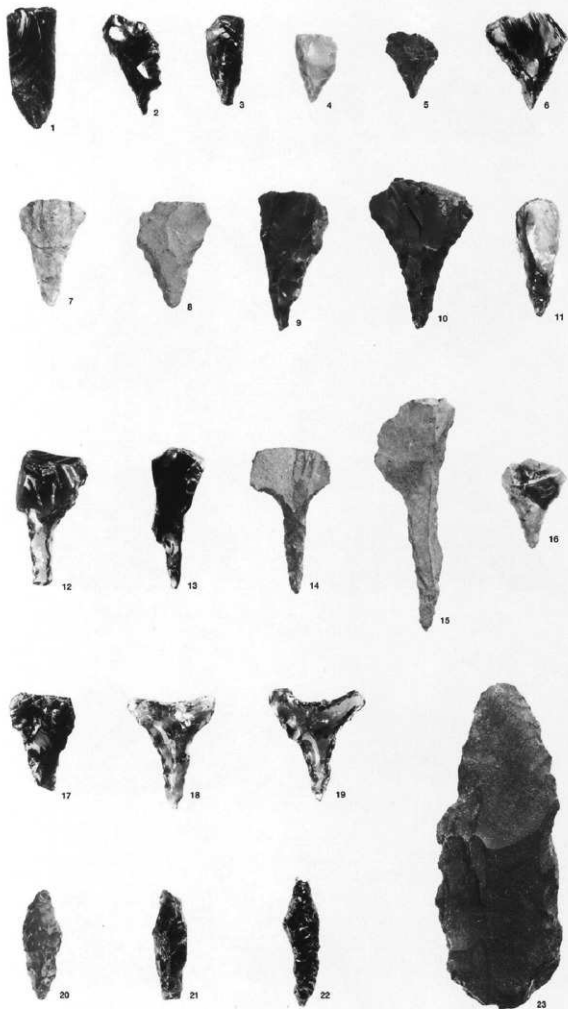
- 15. NY17-5
- 16. SB1173
- 17. NY25-18
- 18. NY19-34
- 19. SB3013
- 20. III A2-59
- 21. NY24-30
- 22. V U16-32
- 23. SK3237
- 24. SQ3033
- 25. II E20-9
- 26. NY18-5

刃器 (小形1類)

石 匙

1. IVY20-42
2. IVT24-7
3. II E10-24
4. II E20-9
5. SB3013
6. SB3021
7. SF3110
8. SK3141
9. IVY4-1
10. IIIA1-28
11. IVY9-41
12. IIIA1-62





石 錐

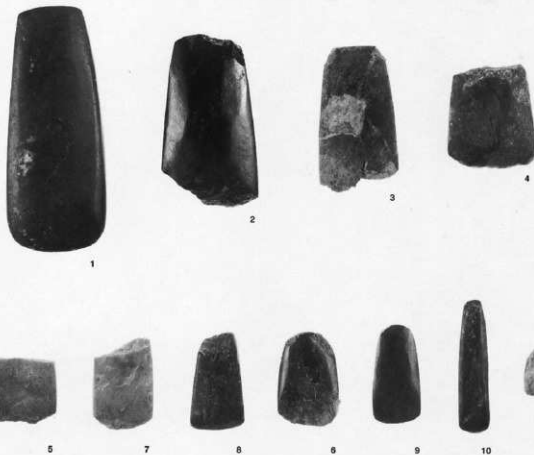
1. SB1166
2. SB3027
3. II E4-45
4. NY14-27
5. NY14-47
6. SB1173
7. NY15-6
8. III A1-22
9. NY14-18
10. SQ3025
11. V U224
12. III A1-44
13. III A1-45
14. SB3028
15. SK3162
16. NY19-58
17. SB1165
18. VP16-1
19. NY9-46
20. SB3013
21. SQ3033
22. NY18-40

石 槍

23. V U21-13

磨製石斧

1. NY14-51
2. SB3019
3. SB3021
4. SB3019
5. NA2-17
6. NY17-1
7. NY17-45
8. ㊦-2
9. NY18-12
10. NT20
11. ㊦-3



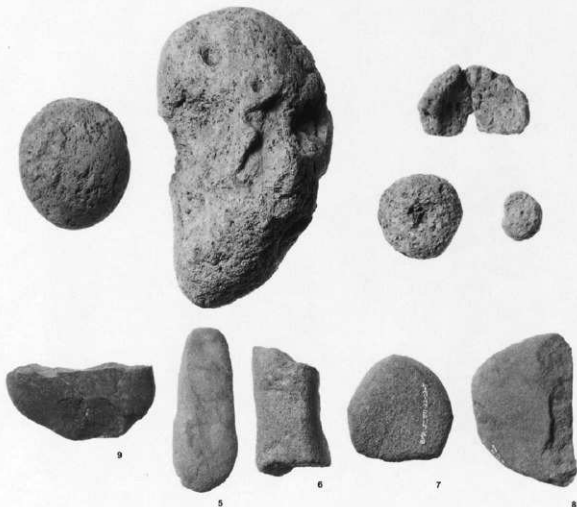
軽石製品

砥石

5. IIIA6-63
6. VU16-60
7. VU22-22
8. NY20-63

石錘

9. SB3010



裝飾品 (表)

1. VP6-50
2. SQ3014
3. VQ9-61
4. SQ3001
5. NY8-19
6. SQ3014
7. SQ3014
8. VT19-47
9. VU22-21
10. ■A11-16
11. NY20-17



1



2



4



3



5



8



7



6



9



10



11

裝飾品 (裏)

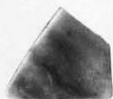
1. VP6-50
2. SQ3014
3. VQ9-61
4. SQ3001
5. IVY8-19
6. SQ3014
7. SQ3014
8. IVT19-47
9. VU22-21
10. IIIA11-16
11. IVY20-17



1



2



4



3



5



6



7



8



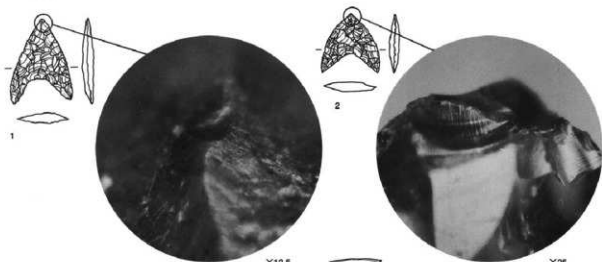
9



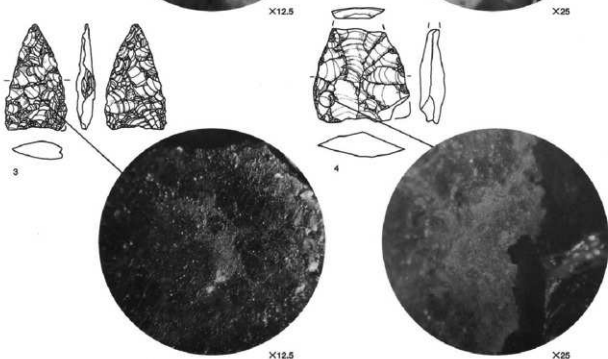
10



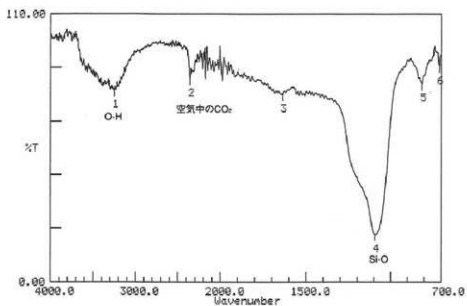
11

使用痕写真1
石鏃

1. ⅢA6-43
図版310-53
PL99-53
(先端部摩耗)
2. SB1173
図版310-61
PL99-61
(先端部損傷)



3. VU16-29
図版308-3
PL98-3
(付着物)
4. FY25-18
図版308-13
PL98-13
(付着物)



5. ⅢA2-15
(付着物)

Condition
upper 110.00 lower 0.00 depth 1.00

Peak table

1:	3250.35(78.6)	2:	2359.15(83.3)	3:	1637.71(77.0)
4:	1091.81(19.3)	5:	814.03(81.3)	6:	711.80(88.4)

FT-IR スペクトル



5

使用痕写真2

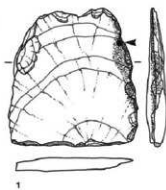
大形刃器26類

1. IVY23-29

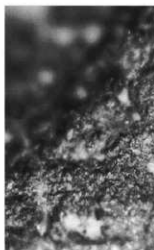
図版319-2

PL107-2

(摩耗痕)

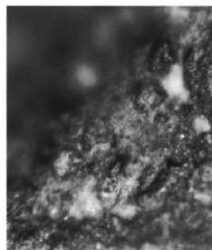


1



1a

X25



1b

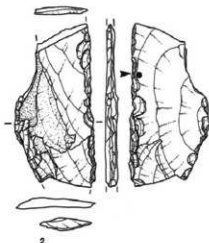
X50

2. IVY12-48

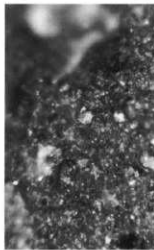
図版319-3

PL107-3

(摩耗痕)

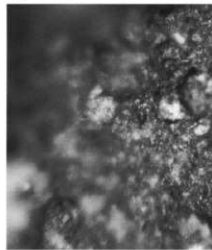


2



2a

X25



2b

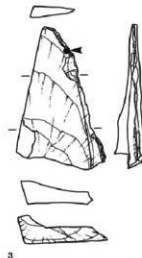
X50

3. IVY5-57

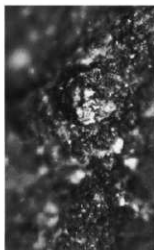
図版319-8

PL107-8

(无沢痕)

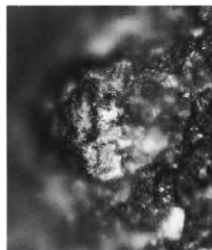


3



3a

X25



3b

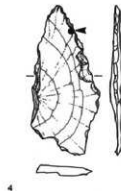
X50

4. IIIA1-62

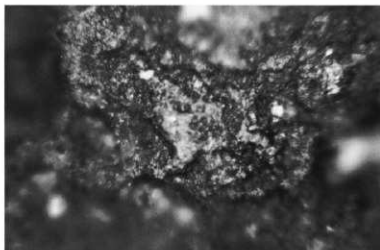
図版319-10

PL107-10

(摩耗痕)

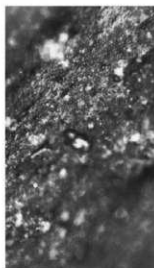
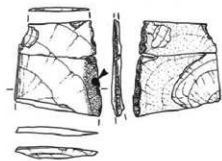


4



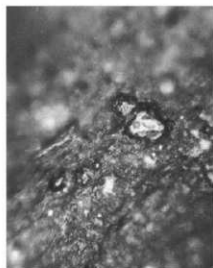
4a

X50



A

X25



B

X50

使用痕写真3

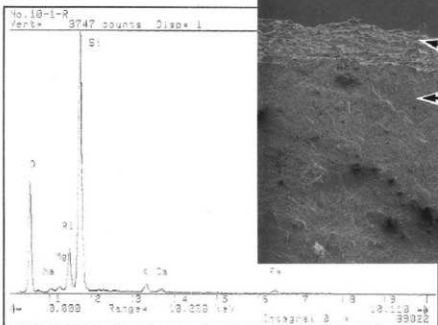
大形刃器2類

II E10-26

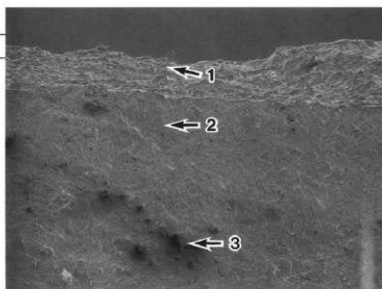
図版319-4

PL107-4

(光沢・線状痕)

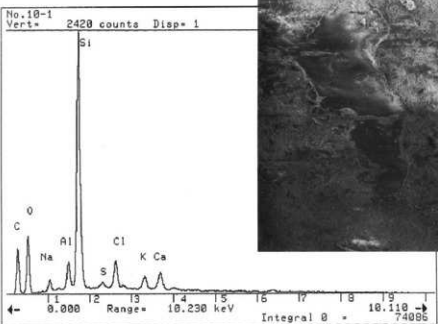


刃部 (C-2) EDX分析チャート

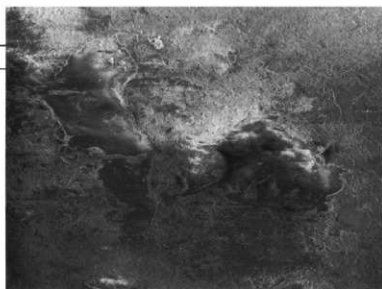


C

X100



刃部 (C-3) EDX分析チャート



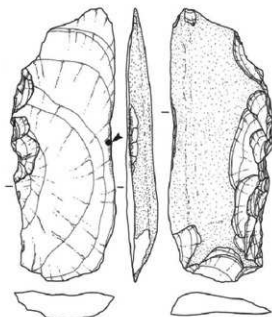
D

X100

使用痕写真4

大形刃器2a類

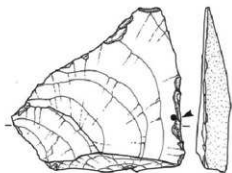
1. IVY20-15
図版320-12
PL107-12
(摩耗・線状痕)



1

大形刃器3b類

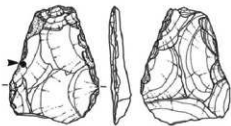
2. IIE20-2
図版322-20
PL109-20
(摩耗痕)



2

大形刃器2c類

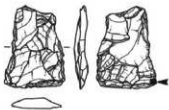
3. SB3028
図版323-30
PL109-30
(摩耗・線状痕)



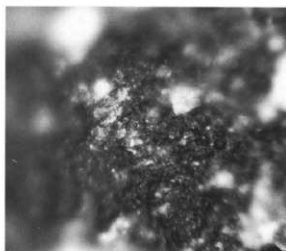
3

大形刃器4類

4. SB3013
図版323-36
PL109-36
(摩耗痕)

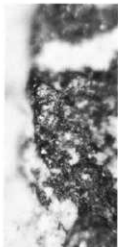


4



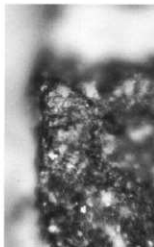
1a

X50



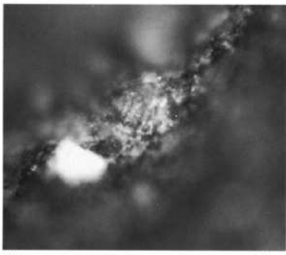
2a

X25



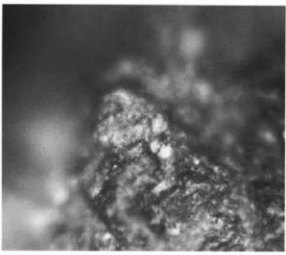
2b

X50



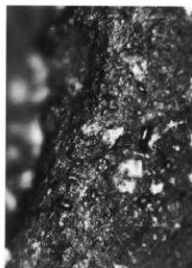
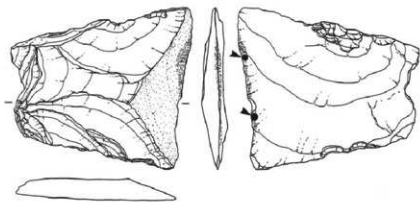
3a

X50



4a

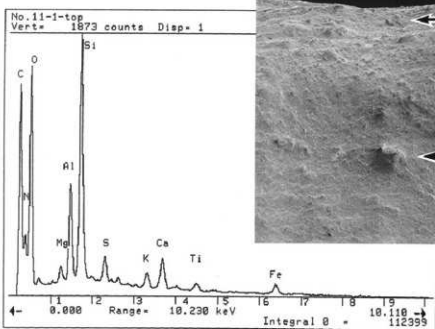
X50



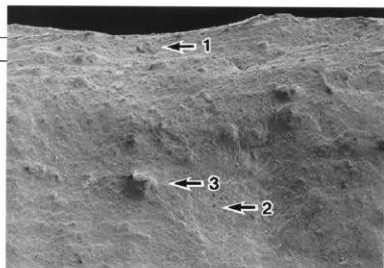
A

X25

使用痕写真5
大形刃器3b類
IVY15-19
図版322-22
PL109-22
(光沢版)

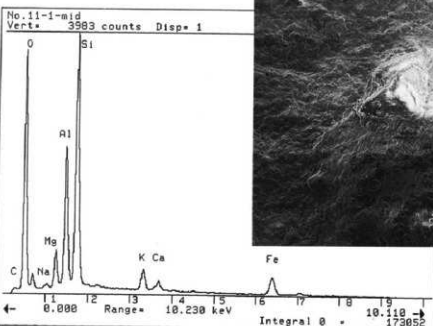


刃部 (B-1) EDX分析チャート



B

X100



刃部 (B-3) EDX分析チャート



C

X1,000

使用痕写真6

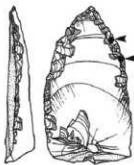
小形刃器

1. SB3025

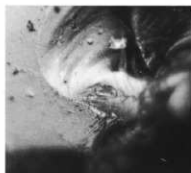
図版325-5

PL111-5

(摩耗・線状痕)

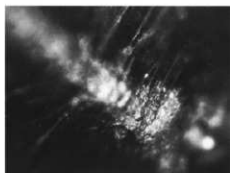


1



1a

X25



1b

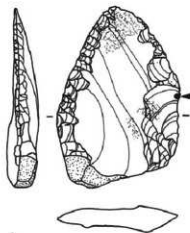
X50

2. II E10-39

図版326-13

PL111-13

(摩耗痕)

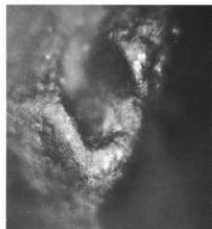


2



2a

X25



2b

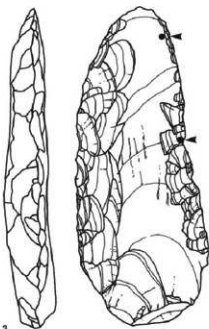
X50

3. III A3-5

図版326-14

PL111-14

(摩耗・線状痕)

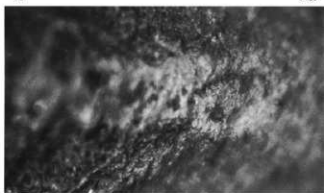


3



3a

X25



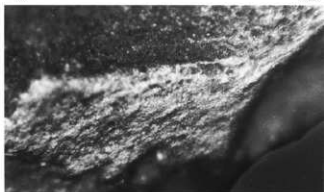
3b

X50



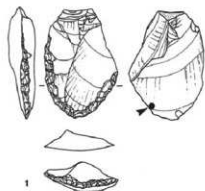
3d

X25

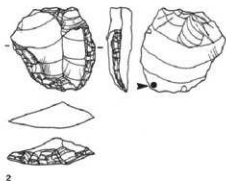


3c

X25



1

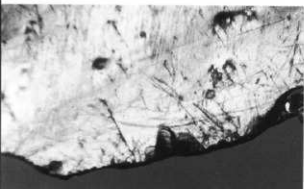


2

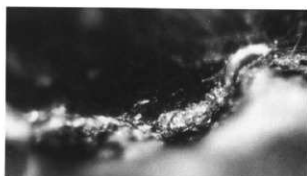
使用痕写真7

小形刃器

1. NY17-5
図版327-15
PL.112-15
(線状痕)
2. SB1173
図版327-16
PL.112-16
(摩耗痕)

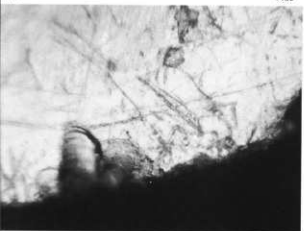


X25

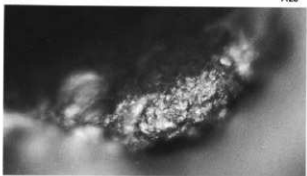


2a

X25

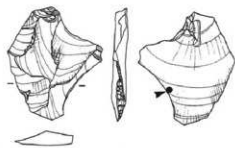


X50

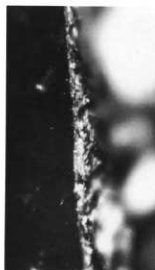


2b

X50

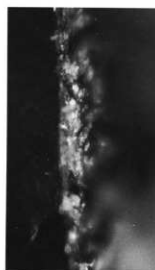


3



3a

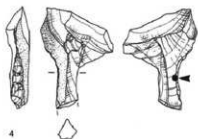
X25



3b

X50

3. SK3237
図版327-23
PL.112-23
(潰れ痕)



4



4a

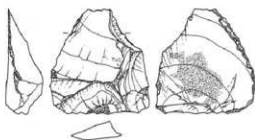
X25

4. SQ3033
図版327-24
PL.112-24
(潰れ痕)

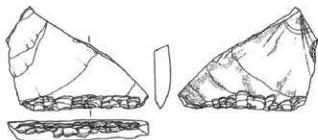
使用痕写真8

小形刃器

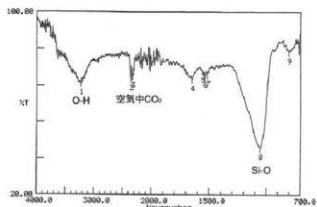
1. IVY10-45
(付着物)
2. IVY24-32
図版325-8
PL.111-8
(付着物)



1



2

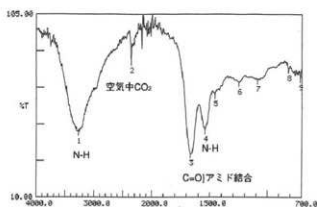


Condition
 umer 100.00 lower 20.00 depth 1.00

Peak table

11	3231.06(69.1)	21	2363.81(71.2)	31	2334.80(72.1)
41	1623.14(78.8)	51	1362.48(74.4)	61	1343.19(72.1)
71	1321.37(72.9)	81	1059.82(48.5)	91	884.39(82.6)

FT-IRスペクトル



Condition
 umer 105.00 lower 10.00 depth 1.00

Peak table

11	3275.42(44.8)	21	2359.15(80.8)	31	1666.65(32.6)
41	1543.19(45.8)	51	1488.32(43.4)	61	1221.91(69.7)
71	1087.95(71.1)	81	815.96(76.8)	91	713.73(72.8)

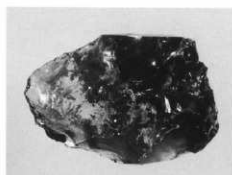
FT-IRスペクトル

微細な剥離痕跡
 を有する資料

3. SB3010
(付着物)



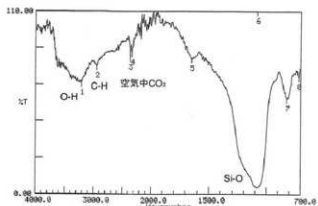
3



4

石匙

4. IVY20-12
(付着物)

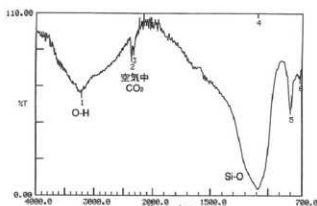


Condition
 umer 110.00 lower 0.00 depth 1.00

Peak table

11	3213.78(66.6)	21	2947.58(77.8)	31	2552.01(82.1)
41	2328.29(85.1)	51	1647.36(81.3)	61	1884.89(1.9)
71	821.75(57.3)	81	717.58(78.6)		

FT-IRスペクトル



Condition
 umer 110.00 lower 0.00 depth 1.00

Peak table

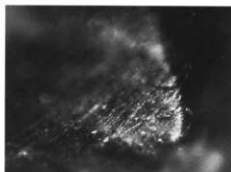
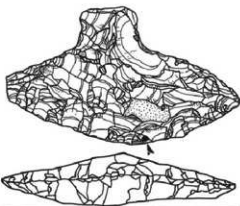
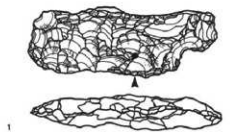
11	3211.77(61.1)	21	2359.15(83.1)	31	2234.43(86.7)
41	1891.81(4.8)	51	886.53(31.6)	61	713.73(78.7)

FT-IRスペクトル

使用痕写真9

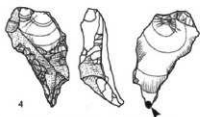
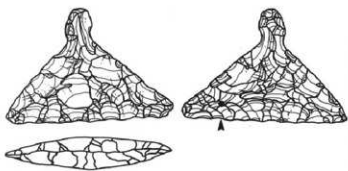
石匙

1. NY20-42
図版328-1
PL.113-1
(線状痕)
2. SF3110
図版329-7
PL.113-7
(摩耗痕)
3. NY9-41
図版329-11
PL.113-11
(摩耗痕)



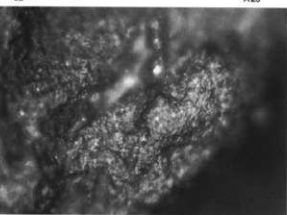
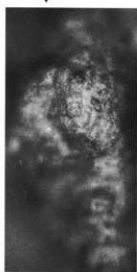
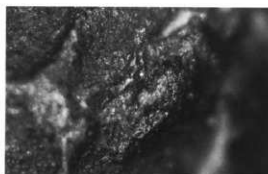
1a X25

2a X25



石錐

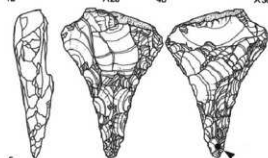
4. SB3027
図版330-2
PL.114-2
(摩耗痕)



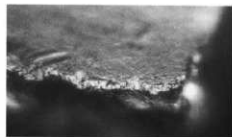
4a X25

4b X50

3a X25



5



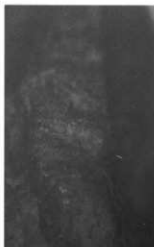
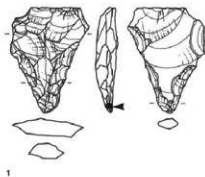
5a X50

5. SQ3025
図版330-10
PL.114-10
(摩耗・線状痕)

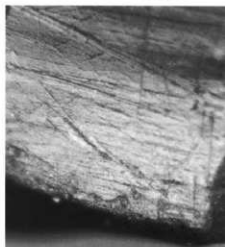
使用痕写真10

石錐

1. IIIA1-22
図版330-8
PL114-8
(線状痕)

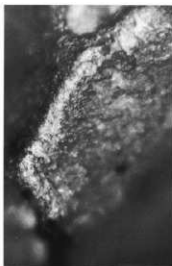
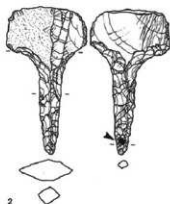


1a X12.5

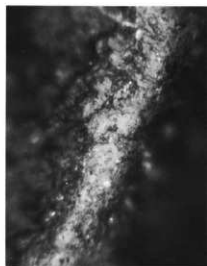


1b X25

2. SB3028
図版331-14
PL114-14
(摩耗・線状痕)

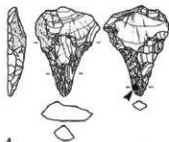
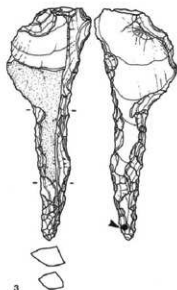


2a X25



2b X50

3. SK3162
図版331-15
PL114-15
(摩耗痕)

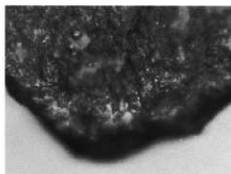


4

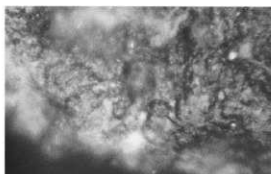


4a X25

4. IVY19-58
図版331-16
PL114-16
(摩耗・線状痕)



3a X25

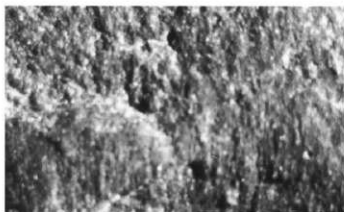
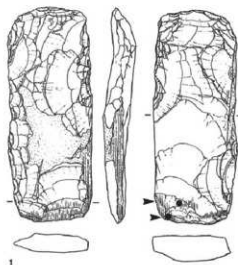


3b X50

使用痕写真11

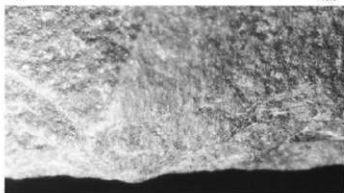
打製石斧

1. IVY5-58
図版311-1
PL100-1
(摩耗・線状痕)



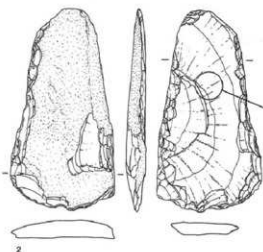
1a

X3.3



1b

X3.3



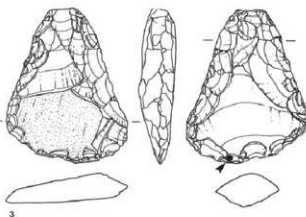
2

2. IVY13-41
図版311-5
PL100-5
(基部摩耗痕)



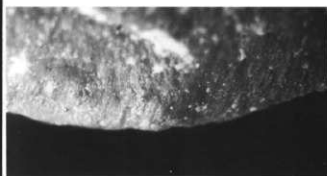
2a

X3.3



3

3. VU21-22
図版311-9
PL100-9
(摩耗・線状痕)



3a

X3.3



3b

X5

使用痕写真12

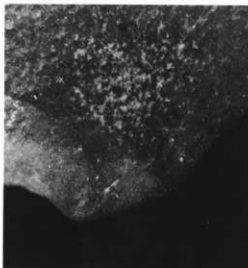
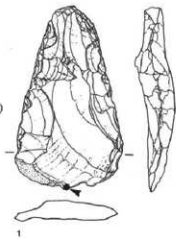
打製石斧

1. IVY19-64

図版312-8

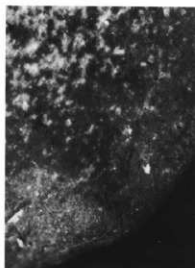
PL100-8

(摩耗・線状痕)



1a

X3.3



1b

X7.5

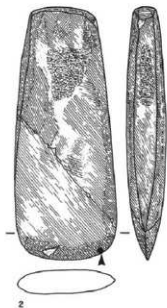
磨製石斧

2. IVY14-51

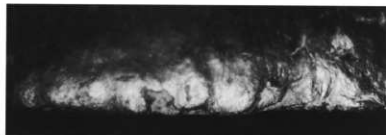
図版322-1

PL115-1

(摩耗・線状痕)



2



2a

X3.3



2b

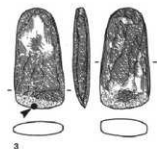
X5

3. IVY18-12

図版332-9

PL115-9

(摩耗・線状痕)

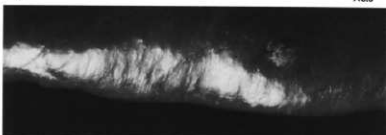


3



3a

X3.3



3b

X7.5

4. IVT20

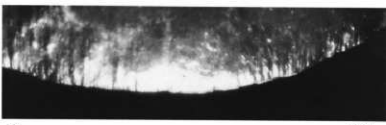
図版332-10

PL115-10

(摩耗・線状痕)



4



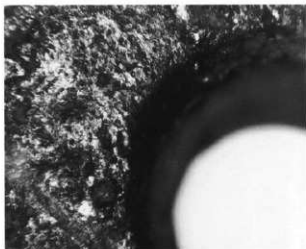
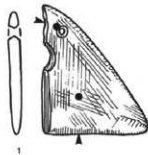
4a

X3.3

使用痕写真13

块状耳飾

1. SQ3014
圖版333-2
PL116-2
(1a,b 穴部摩耗痕)
(1c 研摩痕)



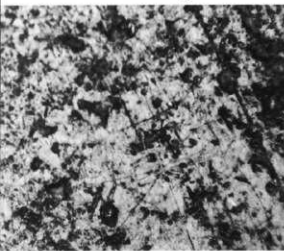
1a

X12.5



1b

X25

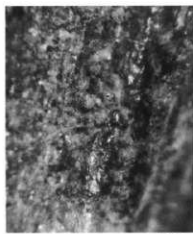


1c

X25



2



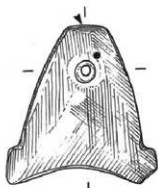
2a

X12.5

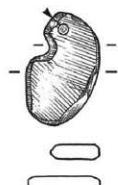
2. SQ3001
圖版333-4
PL116-4
(撞切痕)

垂飾

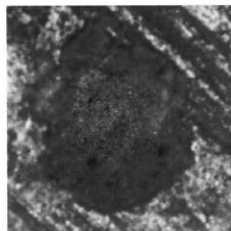
3. N Y8-19
圖版333-5
PL116-5
(穴部未貫)



4

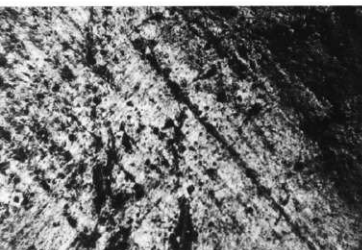


3



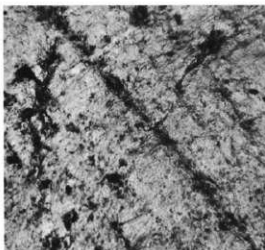
3a

X12.5



4a

X12.5



4b

X25

4. SQ3014
圖版333-6
PL116-6
(研摩痕)

使用痕写真14

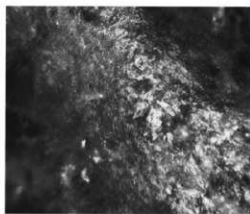
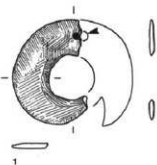
「の」字状石製品

1. SQ3014

図版333-7

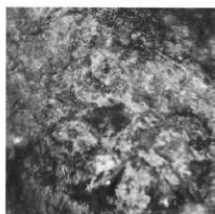
PL116-7

(穴部摩耗痕)



1a

X12.5



1b

X25

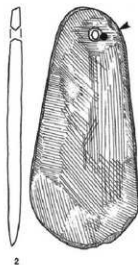
玉斧

2. VU22-21

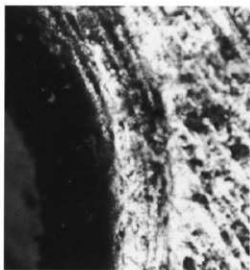
図版334-9

PL116-9

(穴部研摩痕)

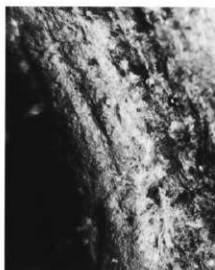


2



2a

X12.5



2b

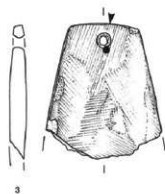
X25

3. III A11-16

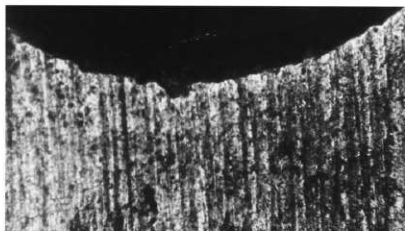
図版334-10

PL116-10

(研摩痕)



3



3a

X12.5

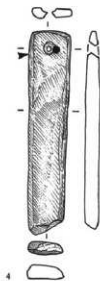
棒状垂飾

4. NY20-17

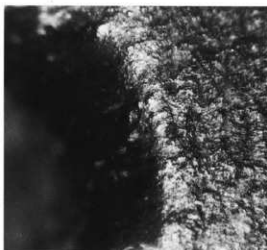
図版334-11

PL116-11

(穴部摩耗痕)

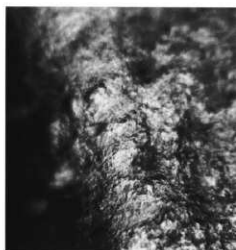


4



4a

X12.5



4b

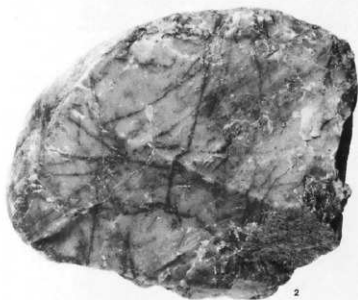
X25



1



3



2



5



4



1



2



3



4



5



6



7



8



9



10



11



12



13



15



14



16

原石

1. VP25-1

石核

2. VU3-28

3. VU73

製片B類

4. VT25-30

5. SB3011

石鏃

1. NY19-32

2. SB3011

3. NY20-1

4. VK25-43

5. SB3011

6. NY17-36

7. VM11-62

8. NY19-19

9. NY3-44

10. VT24-45

11. NY10-52

12. NY14-37

13. VU8-55

石鏃

14. II E15-1

15. SK3001

磨製石斧

16. VU21-53

打製石斧

1. NY14-41
2. VP6-5
3. VP8-16
4. NY20-17
5. VP21-24
6. VP6-25
7. VK25-1
8. NY4-45
9. VU21-1
10. IIIA1-1
11. NY18-45
12. VV1-3

