



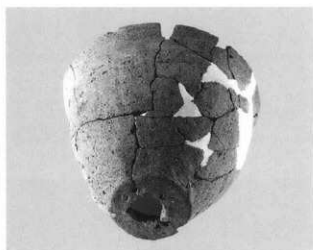
H 4-15



H 4-18



H 4-16



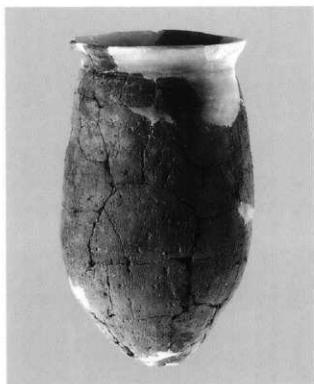
H 4-18



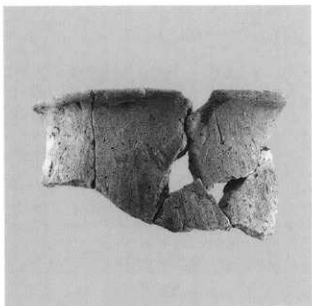
H 4-17



H 4-19



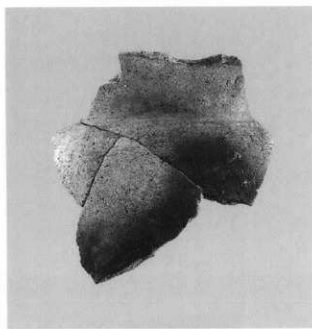
H 4 - 20



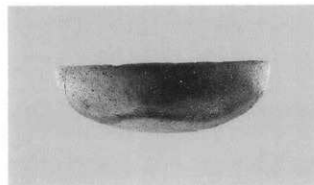
H 4 - 21



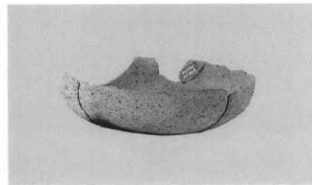
H 4 - 23



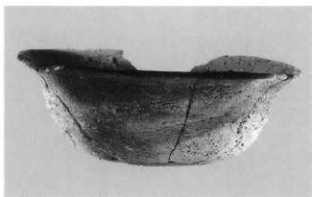
H 4 - 22



H 5 - 1



H 5 - 2



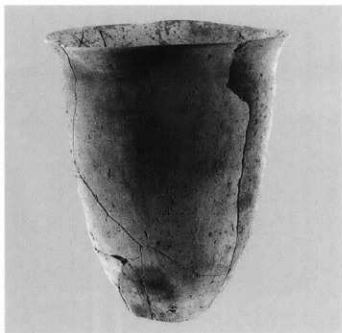
H5-3



H5-4



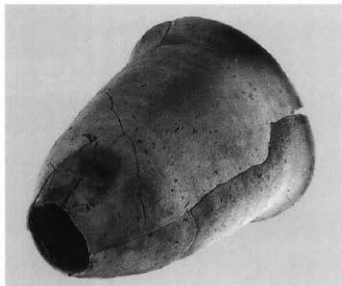
H5-5



H5-6



H5-7



H5-6



H 5 - 8



H 5 - 9



H 5 - 10



H 5 - 12



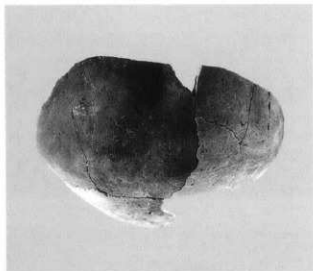
H 5 - 11



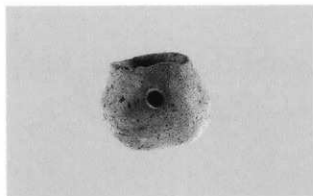
H 5 - 13



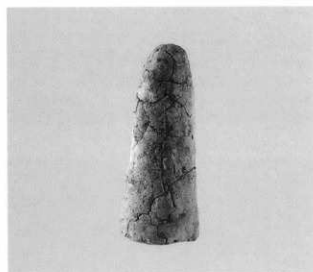
H 5 - 14



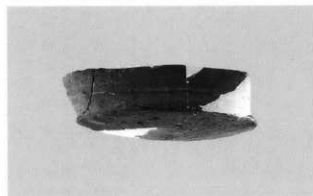
H 5 - 15



H 5 - 16



H 5 - 17



H 7 - 1



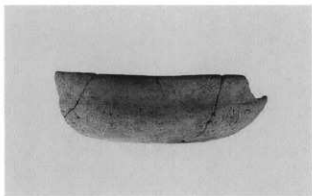
H 7 - 3



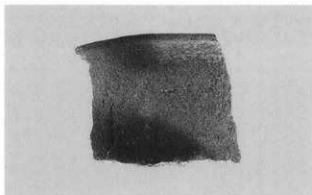
H 7 - 2



H7-4



H8-2



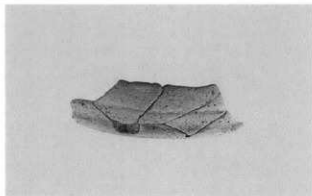
H7-5



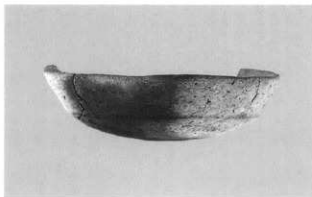
H8-3



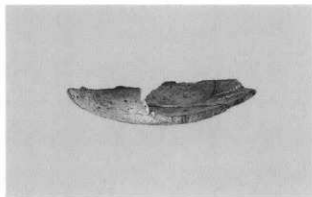
H7-6



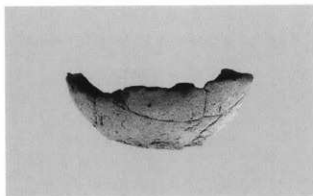
H8-4



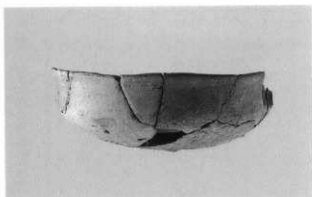
H8-1



H8-5



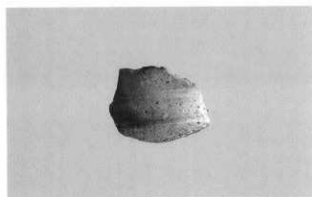
H8-6



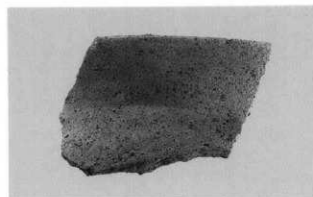
H9-1



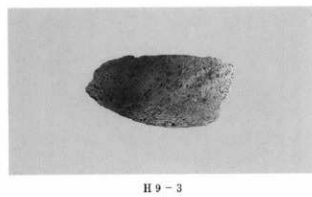
H8-6



H9-2



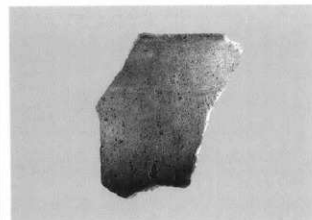
H8-7



H9-3



H8-8



H9-5



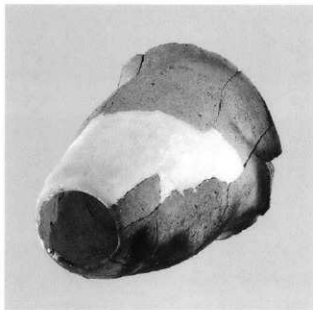
H9-4



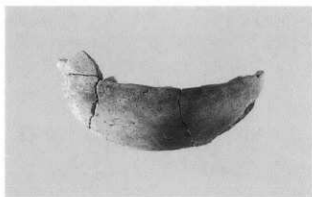
H10-2



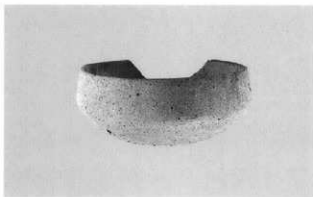
H10-3



H9-4



H10-4



H10-1

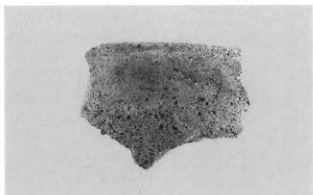


H10-5

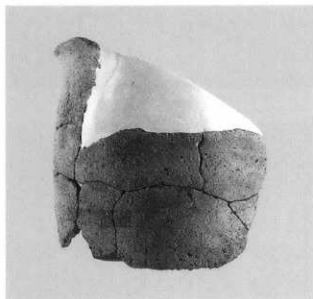




H10-6



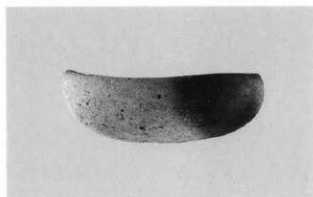
H10-9



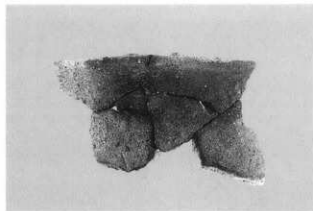
H10-7



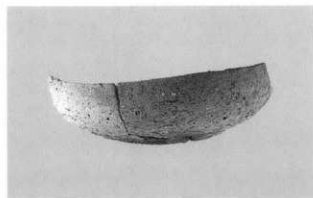
H10-10



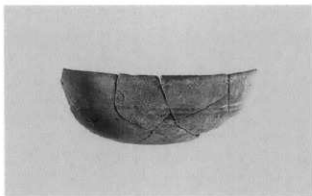
H11-1



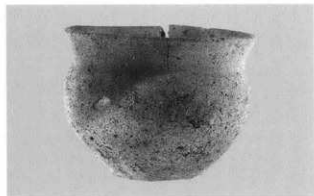
H10-8



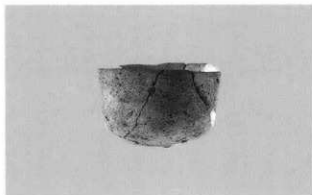
H11-2



H11-3



H11-7



H11-4



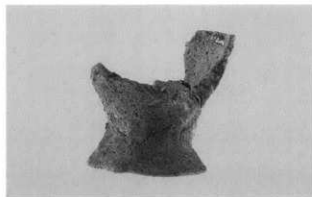
H11-8



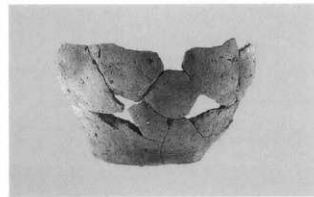
H11-5



H11-9



H11-6



H11-10



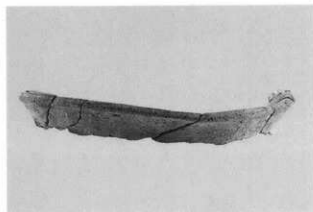
H11-11



H11-12



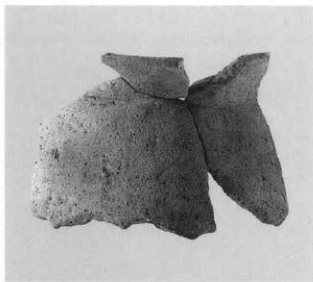
H11-13



H11-14



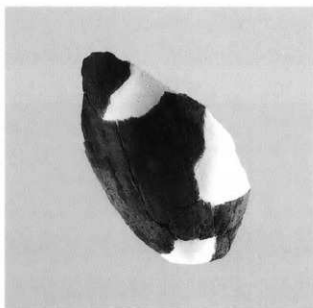
H11-15



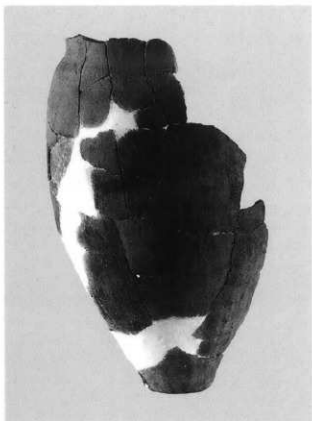
H11-16



H11-18



H11-19



H11-17



H11-20



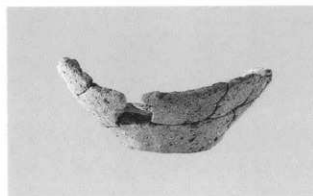
H11-21



H11-22



H11-23



H11-24



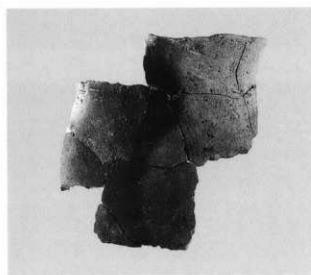
H11-25



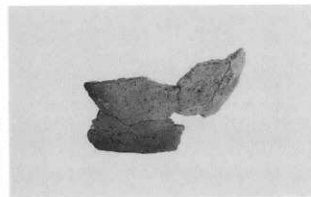
H12-1



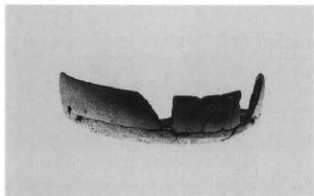
H12-2



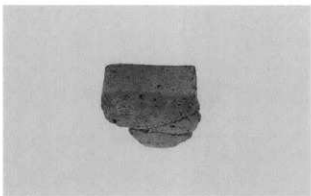
H12-3



H12-4



H13-1



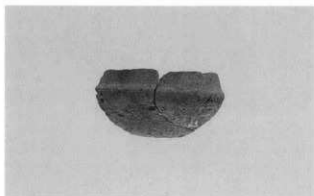
H13-5



H13-2



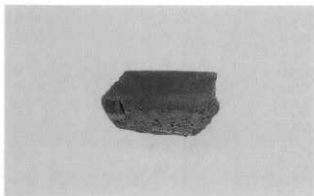
H13-6



H13-3



H13-7



H13-4



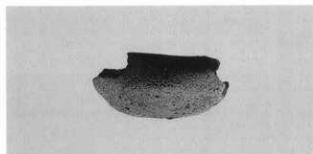
H13-8



H14-1



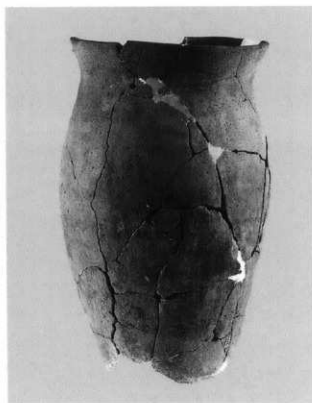
H14-4



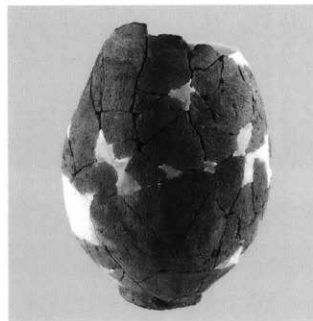
H14-2



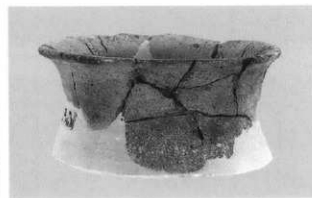
H14-3



H14-5



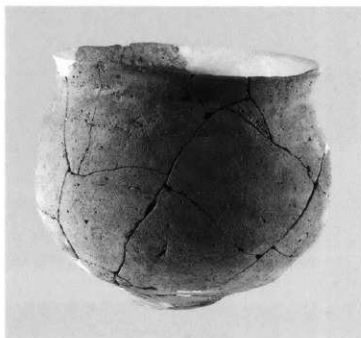
H14-6



H14-7



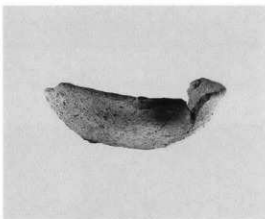
H14-8



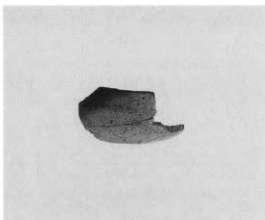
H14-9



H15-1



H15-2



H15-3



H15-4

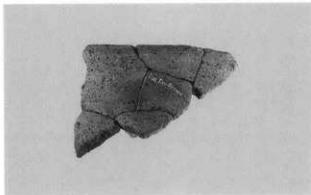


H15-5

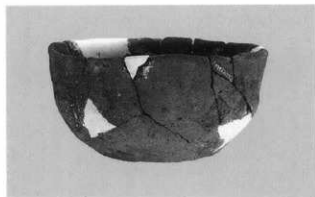




H15-6



H15-10



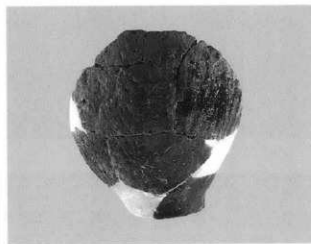
H15-7



H15-11



H15-8



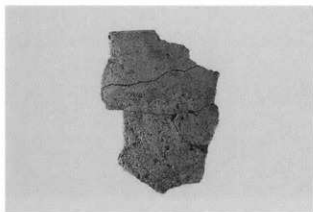
H15-12



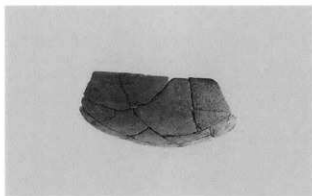
H15-9



H15-13



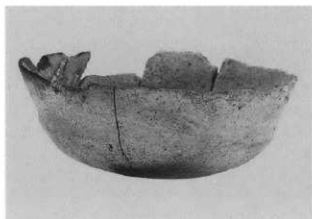
H15-14



H17-1



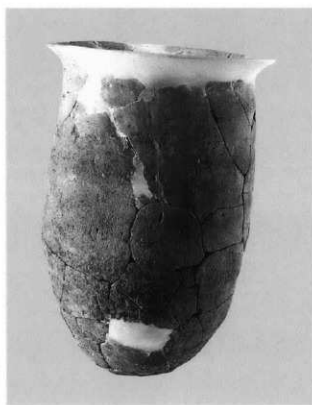
H16-1



H17-2



H16-1



H17-3



H17-4



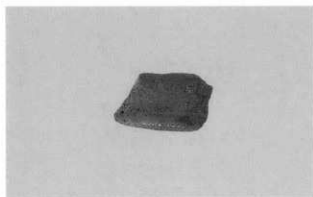
H18-3



H17-5



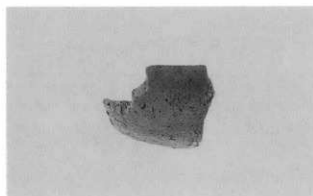
H18-4



H18-1



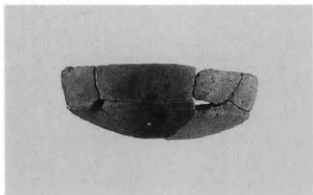
H18-5



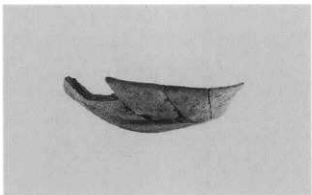
H18-2



H19-1



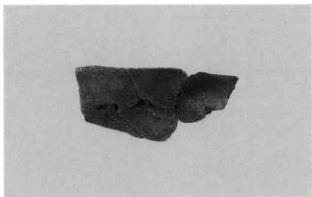
H19-2



H19-6



H19-3



H19-7



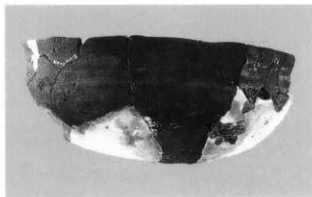
H19-4



H19-8



H19-5



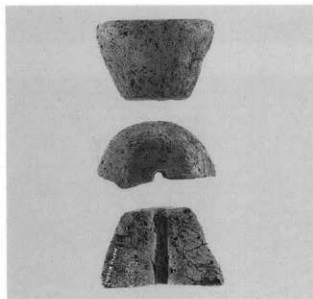
H19-9



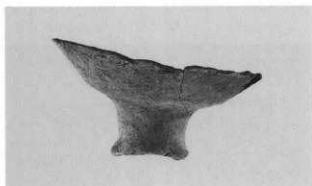
H19-10



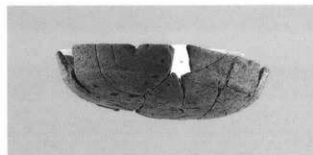
H19-11



H19-12



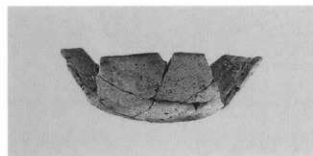
H20-3



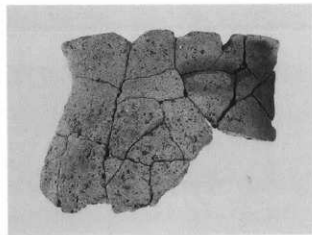
H20-1



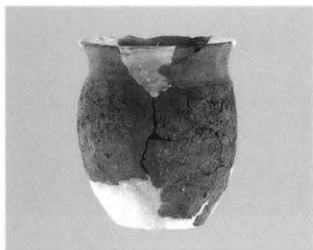
H20-4



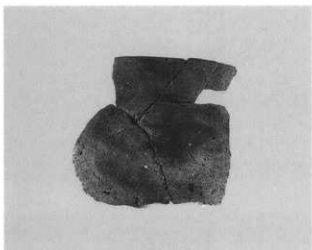
H20-2



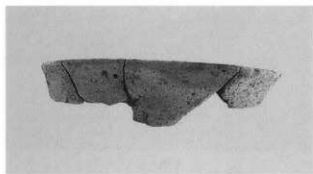
H20-5



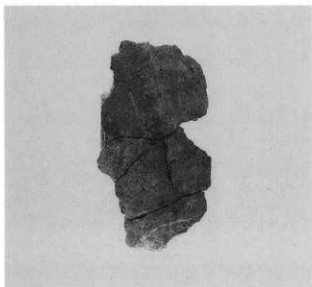
H21-1



H22-1



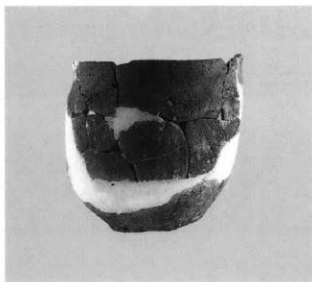
H22-2



H22-4



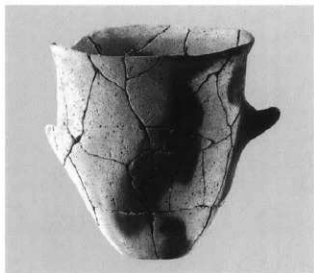
H22-3



H23-2



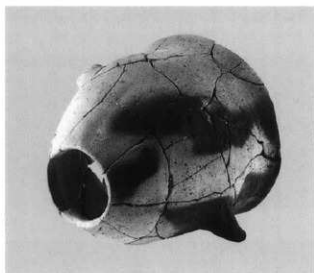
H22-5



H23-1



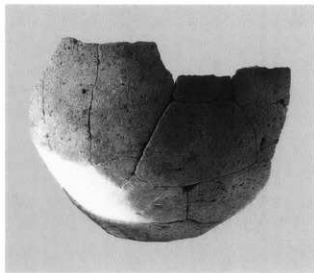
H23-3



H23-1



H23-4



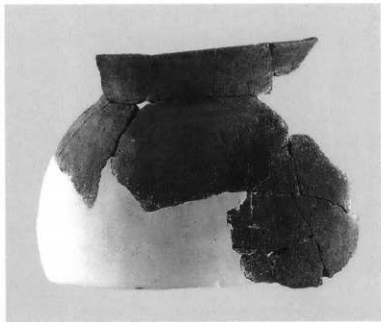
H23-5



H24-1



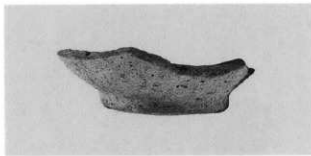
H24-2



H25-3



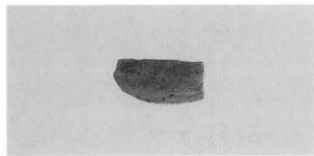
H24-3



H25-4



H25-1



H25-2

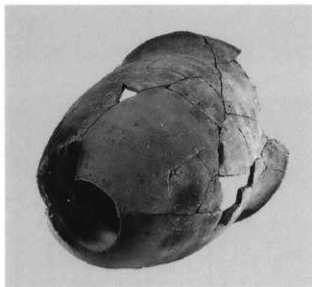


H27-1





H27-2



H27-2



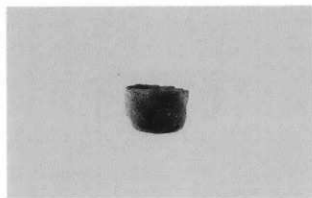
H28-1



H28-2



H28-3



H28-4



H29-1



H29-2



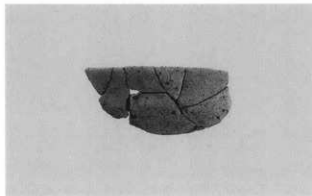
H29-6



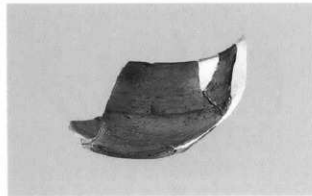
H29-3



H29-7



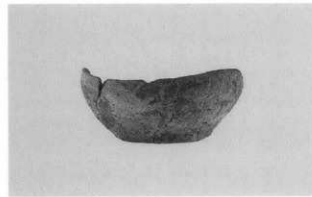
H29-4



H29-8



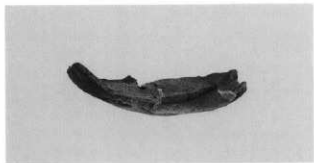
H29-5



H30-1



H30-2



H30-5



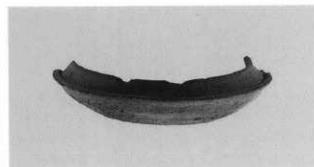
H30-3



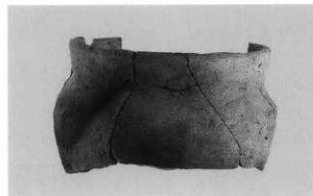
H30-7



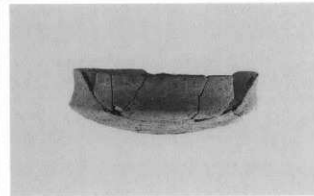
H30-4



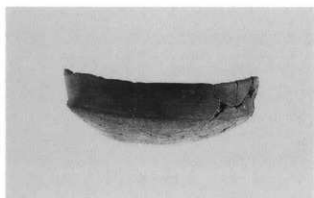
H31-1



H30-6



H31-2



H31-3



H31-7



H31-4



H31-8



H31-5



H31-9



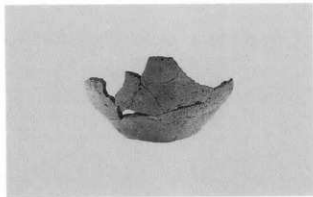
H31-6



H31-10



H32-1



H34-1



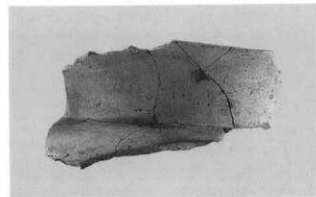
H32-2



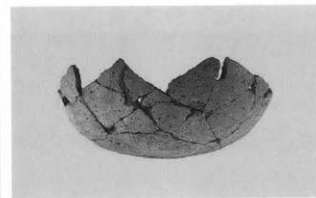
H34-2



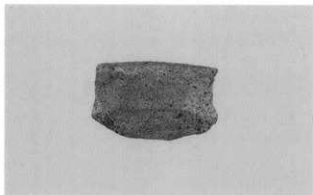
H32-3



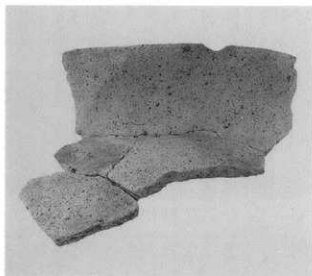
H34-3



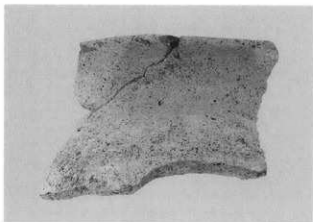
M2-1



M2-2



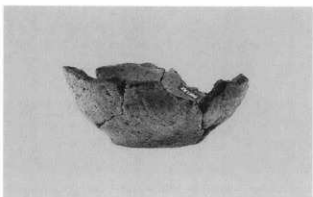
M2-3



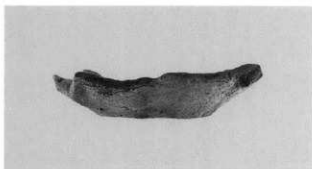
M2-4



M2-5



M2-6



M2-7



M2-8



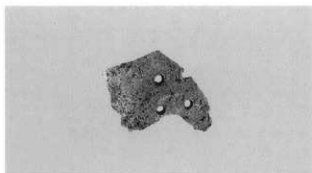
M2-9



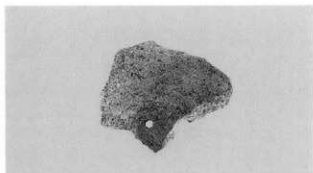
M 2 - 10



M 2 - 11



M 2 - 12



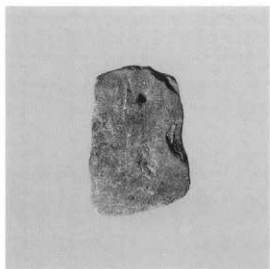
M 2 - 11



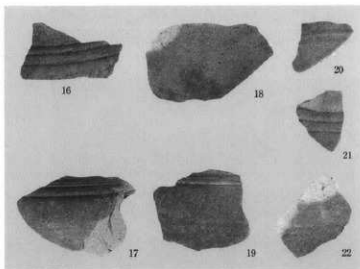
M 2 - 13

M 2 - 14

M 2 - 15



M 2 - 23



M 2 - 16-22



M3-1



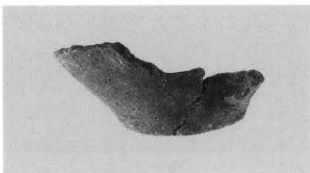
M3-2



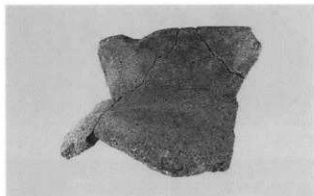
M3-3



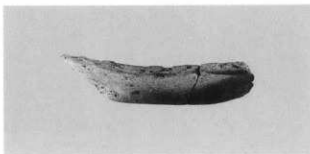
M3-4



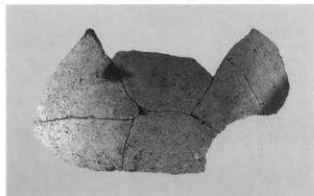
M3-7



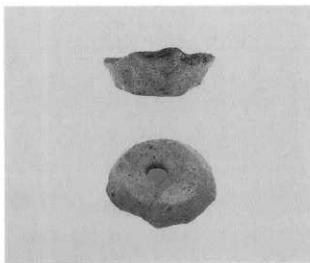
M3-5



M3-8



M3-6



M3-9





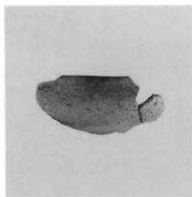
M3-10



M3-11



M4-1



M4-2



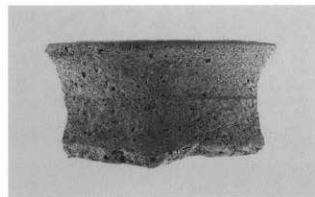
M4-3



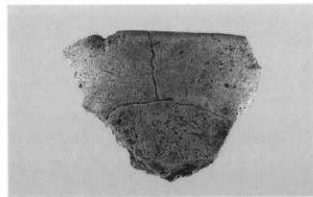
M4-4



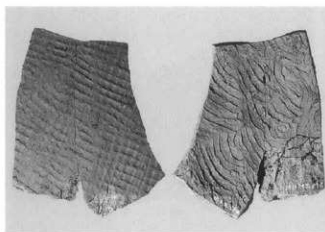
M4-5



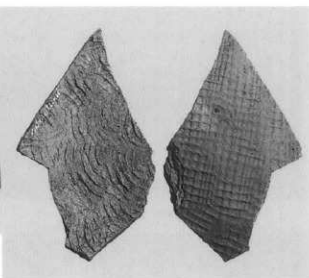
M4-6



M4-7



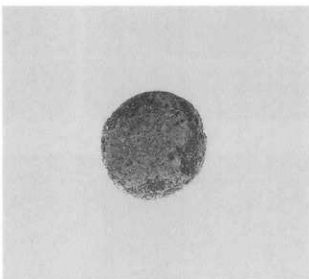
M4-9



M4-8



道橋外-1



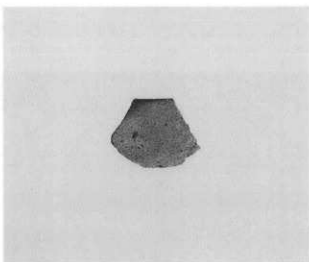
道橋外-3



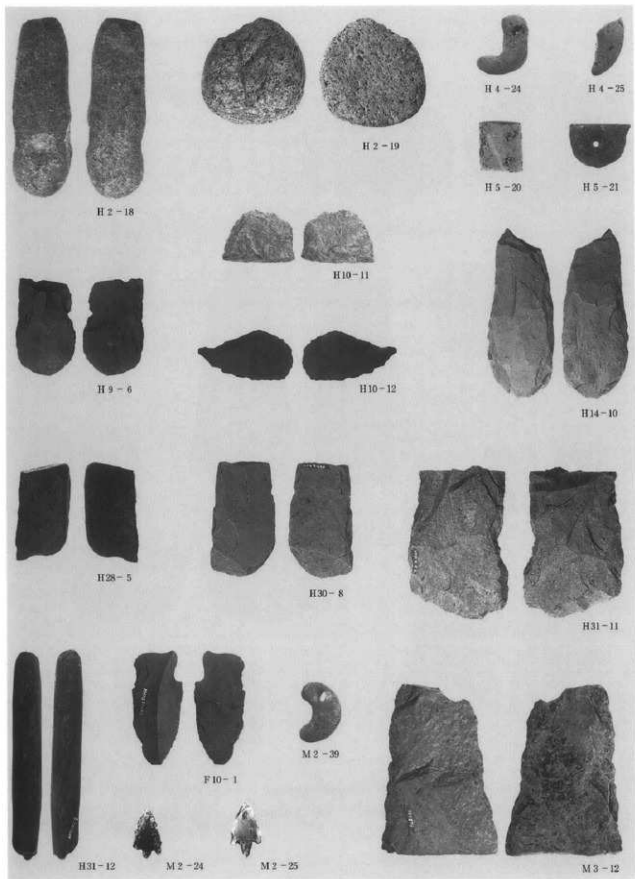
道橋外-2



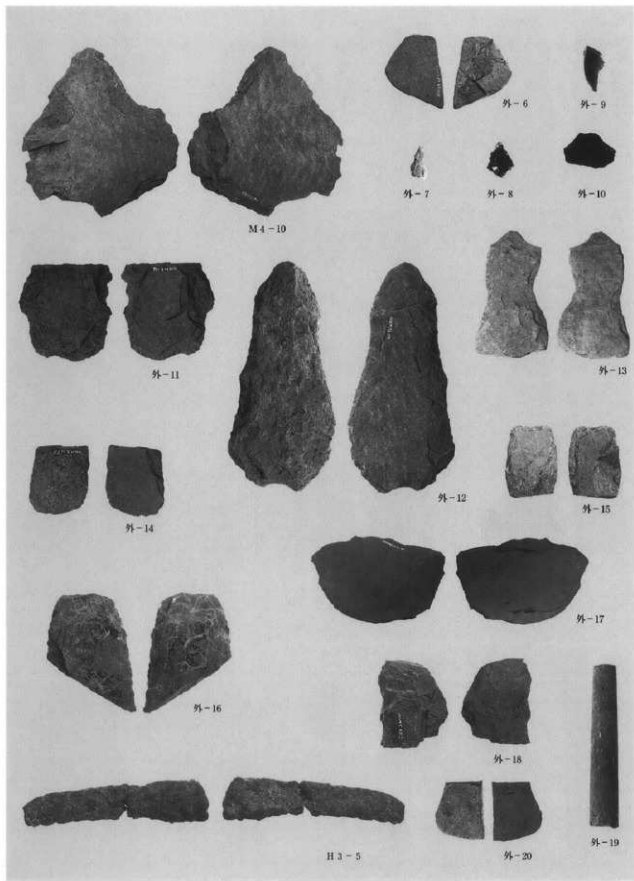
道橋外-5



道橋外-4



桶村遺跡Ⅱ石器



樋村遺跡Ⅱ石器

## 佐久市埋蔵文化財調査報告書

- |   |  |
|---|--|
| <p>第 1 集 [金井城跡]<br/>           第 2 集 [市内遺跡発掘調査報告書1990]<br/>           第 3 集 [石附竈址Ⅱ]<br/>           第 4 集 [大ふけ]<br/>           第 5 集 [立科下遺跡]<br/>           第 6 集 [上曾根遺跡]<br/>           第 7 集 [三貫畑遺跡]<br/>           第 8 集 [渡の下遺跡]<br/>           第 9 集 [国道141号線関係遺跡]<br/>           第 10 集 [惣堀遺跡]<br/>           第 11 集 [赤坂垣外遺跡]<br/>           第 12 集 [若宮遺跡Ⅱ]<br/>           第 13 集 [上高山遺跡Ⅱ]<br/>           第 14 集 [毛毛坂遺跡]<br/>           第 15 集 [野馬久保遺跡]<br/>           第 16 集 [石並城跡]<br/>           第 17 集 [市内遺跡発掘調査報告書1991] (1~3月)<br/>           第 18 集 [西曾根遺跡]<br/>           第 19 集 [上芝宮遺跡]<br/>           第 20 集 [下聖蹟遺跡Ⅱ]<br/>           第 21 集 [金井城跡Ⅲ]<br/>           第 22 集 [市内遺跡発掘調査報告書1991]<br/>           第 23 集 [南上中原・南下中原遺跡]<br/>           第 24 集 [上聖蹟遺跡]<br/>           第 25 集 [上久保田Ⅳ]<br/>           第 26 集 [藤塚古墳群・藤塚Ⅱ]<br/>           第 27 集 [上久保田Ⅲ]<br/>           第 28 集 [曾根新城Ⅴ]<br/>           第 29 集 [山法師遺跡B・筒村遺跡B]<br/>           第 30 集 [市内遺跡発掘調査報告書1992]<br/>           第 31 集 [山法師遺跡A・筒村遺跡A]<br/>           第 32 集 [東ノ領]<br/>           第 33 集 [惣原遺跡Ⅵ・下曾根遺跡Ⅰ・前藤部遺跡2]<br/>           第 34 集 [西一本柳遺跡Ⅰ]<br/>           第 35 集 [市内遺跡発掘調査報告書1993]<br/>           第 36 集 [蛇塚B遺跡Ⅱ]<br/>           第 37 集 [西一本柳遺跡Ⅱ・中西ノ久保遺跡Ⅰ]<br/>           第 38 集 [南下中原遺跡Ⅱ]<br/>           第 39 集 [中原敷遺跡]<br/>           第 40 集 [寺畑遺跡]<br/>           第 41 集 [曾根新城Ⅰ~Ⅳ・Ⅵ他]<br/>           第 42 集 [寄山]<br/>           第 43 集 [他現平遺跡・池端遺跡]<br/>           第 44 集 [寺添遺跡]<br/>           第 45 集 [市内遺跡発掘調査報告書1994]<br/>           第 46 集 [湯戸遺跡]<br/>           第 47 集 [上芝宮遺跡Ⅴ]<br/>           第 48 集 [池端城跡]<br/>           第 49 集 [根々井芝宮遺跡]<br/>           第 50 集 [藤塚遺跡Ⅲ]<br/>           第 51 集 [寺中遺跡・中原敷遺跡Ⅱ]<br/>           第 52 集 [坪の内遺跡]<br/>           第 53 集 [門正坊遺跡Ⅱ]</p> | <p>第 54 集 [市内遺跡発掘調査報告書1995]<br/>           第 55 集 [番匠前遺跡Ⅰ・Ⅱ]<br/>           第 56 集 [聖原遺跡Ⅹ]<br/>           第 57 集 [高野町遺跡Ⅱ]<br/>           第 58 集 [下穴虫遺跡Ⅰ]<br/>           第 59 集 [市内遺跡発掘調査報告書1996]<br/>           第 60 集 [曾根城遺跡Ⅱ]<br/>           第 61 集 [割地遺跡]<br/>           第 62 集 [野馬久保遺跡Ⅱ]<br/>           第 63 集 [西大久保遺跡Ⅲ]<br/>           第 64 集 [梨の木遺跡Ⅳ]<br/>           第 65 集 [中宿遺跡]<br/>           第 66 集 [中西ノ久保遺跡Ⅱ・仲田遺跡・寺畑遺跡Ⅱ]<br/>           第 67 集 [供養塚遺跡]<br/>           第 68 集 [前藤部遺跡]<br/>           第 69 集 [高山遺跡Ⅰ・Ⅱ]<br/>           第 70 集 [飯倉遺跡]<br/>           第 71 集 [市内遺跡発掘調査報告書1997]<br/>           第 72 集 [市道遺跡Ⅱ]<br/>           第 73 集 [西一本柳Ⅲ・Ⅳ]<br/>           第 74 集 [五里田遺跡]<br/>           第 75 集 [八風山遺跡群]<br/>           第 76 集 [南近江遺跡]<br/>           第 77 集 [番匠前遺跡Ⅱ]<br/>           第 78 集 [蛇塚遺跡・蛇塚古墳]<br/>           第 79 集 [四ツ塚遺跡Ⅰ]<br/>           第 80 集 [四ツ塚遺跡Ⅱ]<br/>           第 81 集 [薬師寺遺跡]<br/>           第 82 集 [市内遺跡発掘調査報告書1998]<br/>           第 83 集 [下聖蹟遺跡Ⅳ]<br/>           第 84 集 [橋名平遺跡]<br/>           第 85 集 [柳堂遺跡]<br/>           第 86 集 [市内遺跡発掘調査報告書1999]<br/>           第 87 集 [宮添遺跡]<br/>           第 88 集 [下曾根遺跡Ⅱ・上芝宮遺跡Ⅱ・Ⅲ・Ⅴ<br/>                     下曾根遺跡Ⅱ~Ⅵ]<br/>           第 89 集 [川原湯遺跡]<br/>           第 90 集 [梨の木遺跡Ⅲ]<br/>           第 91 集 [西一本柳ⅤⅥ・中長塚ⅠⅡ・松の木遺跡ⅠⅡ]<br/>           第 92 集 [辻の前遺跡Ⅱ・中仲田遺跡Ⅱ]<br/>           第 93 集 [入高山遺跡]<br/>           第 94 集 [聖石遺跡]<br/>           第 95 集 [市内遺跡発掘調査報告書2000]<br/>           第 96 集 [上木戸遺跡]<br/>           第 97 集 [久保添遺跡]<br/>           第 98 集 [深堀Ⅲ・Ⅳ・Ⅴ]<br/>           第 99 集 [中道遺跡Ⅱ]<br/>           第 100 集 [野沢館跡Ⅲ]<br/>           第 101 集 [深堀遺跡Ⅳ]<br/>           第 102 集 [門正坊遺跡Ⅳ]<br/>           第 103 集 [聖原]<br/>           第 104 集 [聖石遺跡Ⅱ]<br/>           第 105 集 [曾根城遺跡Ⅲ]</p> |
|---|--|

佐久市埋蔵文化財調査報告書 第106集

### 榑村遺跡Ⅱ

長野県佐久市大字平賀榑村遺跡Ⅱ発掘調査報告書

2003年 3月

編集・発行 佐久市教育委員会

〒385-8501 長野県佐久市大字中込3066

文化財課

〒385-0006 長野県佐久市大字志賀5953

TEL 0267-68-7321

印刷所 株式会社 佐久印刷所

