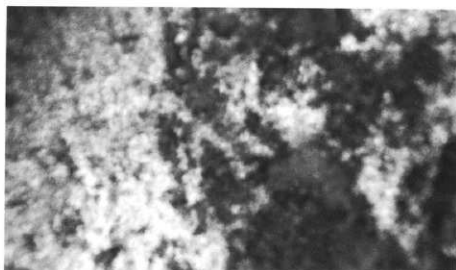


第241図

玉石

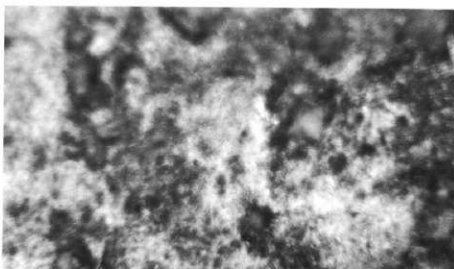
I 1e 類  
SB410  
PL55-1  
PL206-29



A

A. 器面の摩耗・光沢痕

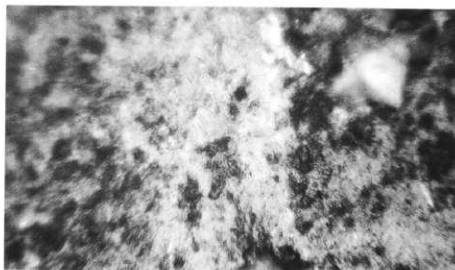
× 5 0



B

B. 器面の摩耗・光沢痕(Aの拡大)

× 1 0 0

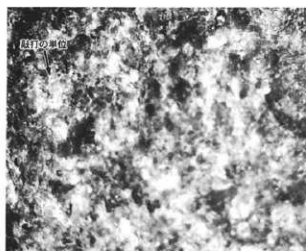


C

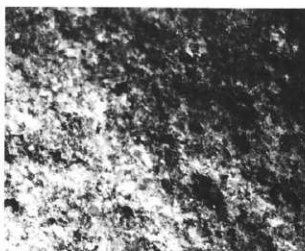
C. 器面の摩耗・光沢痕(Bの拡大)

× 2 0 0

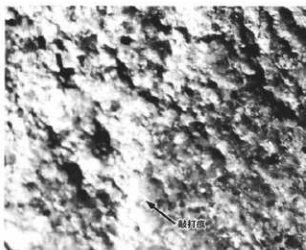
第242図



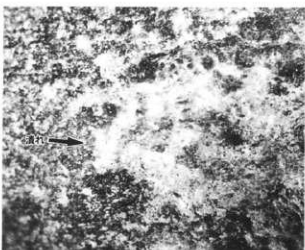
1 ア類 × 10  
SB1131, PL201-1



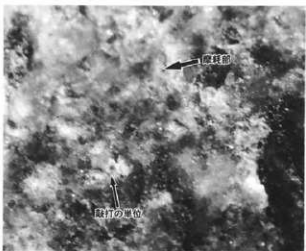
2 ア類 × 10  
SK131, PL114-3-PL201-4



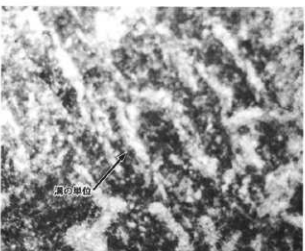
3 工類 × 10  
SB1136, PL74-9-PL202-19



4 イ類 × 10  
SD12, PL123-36-PL201-9



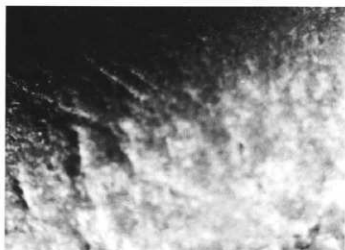
5 ア類 × 10  
SD12, PL123-28-PL201-7



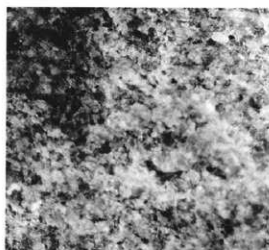
6 工類 × 10  
SB1136, PL202-18

第243図

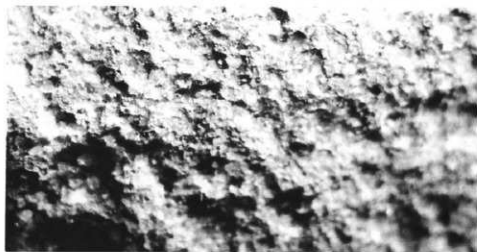
敲石



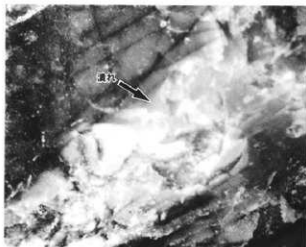
1 工類 ×10  
IB 9, PL202-17



2 の類 ×10  
SD1027, PL177-6・PL202-16



3 工類 ×10  
V G 24, PL203-26



4 力類 ×10  
II V 22, PL204-37



5 冲類 ×10  
SD1027, PL177-4・PL205-44

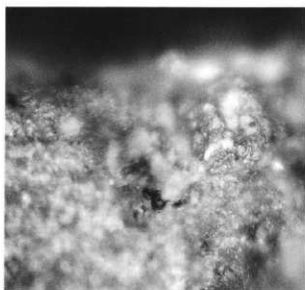
第244図



1A ×100

大形刃器

1 a 類 PL99-10  
SB1281 PL207-4



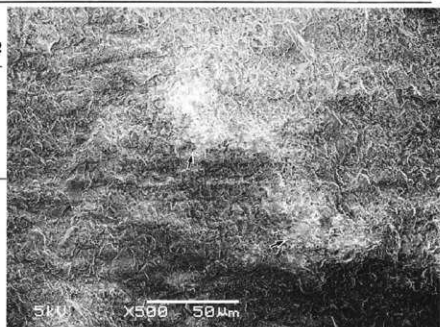
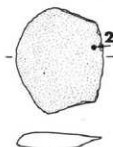
1B ×200

1A.刃部の摩耗・光沢痕

1B.刃部の摩耗・光沢痕(1Aの拡大)

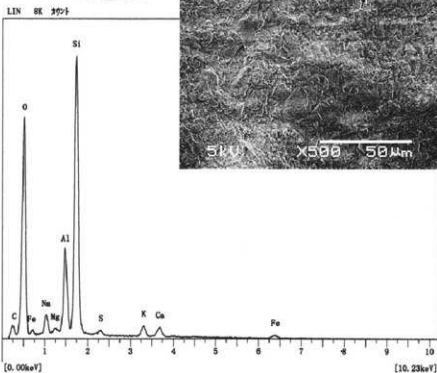
大形刃器

1 a 類  
1 B24



2 ×500

2.刃部の摩耗・光沢痕



2. 刃部摩耗光沢痕のEDX分析チャート

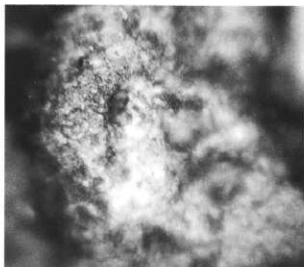
第245図



**1A** × 100

大形刃器

1 ● 類 SD12, PL125-57



**1B** × 200

1A. 刃部の摩耗・光沢痕

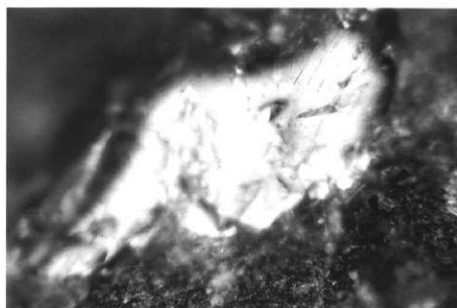
1B. 刃部の摩耗・光沢痕(1Aの拡大)

大形刃器  
2 ● 類  
SD12



**2A** × 50

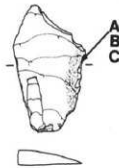
2A. 刃部の摩耗・光沢痕



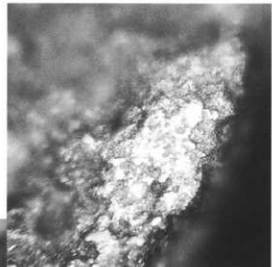
**2B** × 100

2B. 刃部の摩耗・光沢痕(2Aの拡大)

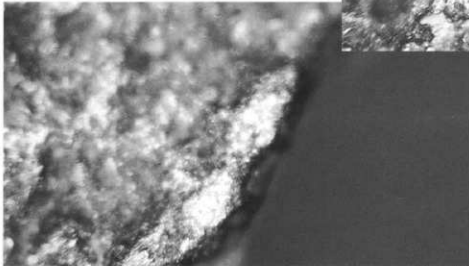
第246図  
大形刃器  
1 b類  
SB1137  
PL208-24



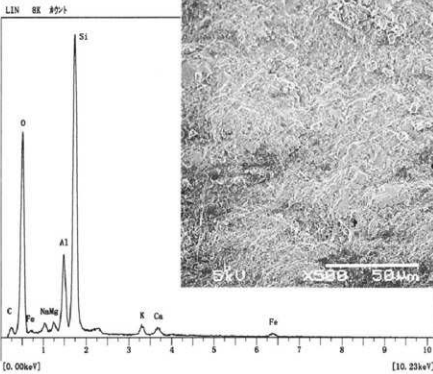
- A. 刃縁の摩耗・光沢痕
- B. 刃部の摩耗・光沢痕(Aの拡大)
- C. 刃部の原材面



B  $\times 200$



A  $\times 100$



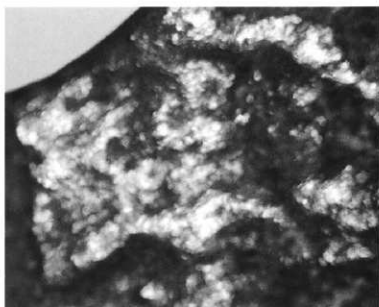
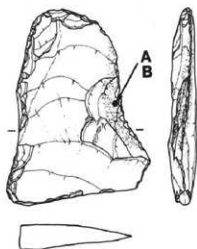
C. 刃部原材面のEDX分析チャート



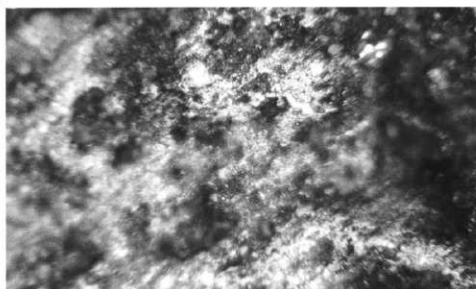
C  $\times 500$

第247図  
大形刃器

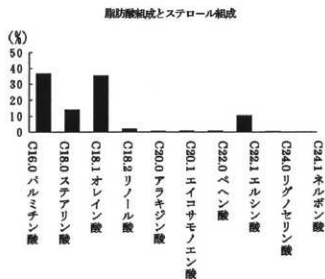
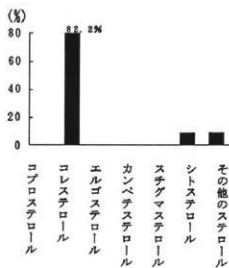
1 b 類, SB1160, PL83-17・PL207-7



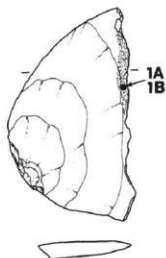
A 刃部の摩耗・光沢面 ×50



B 刃部の摩耗・光沢面(Aの拡大) ×100



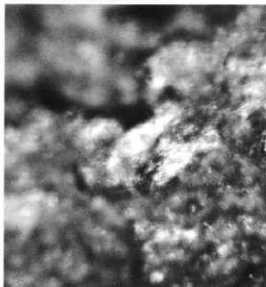
第248図  
大形刃器  
1 b類  
SD12  
PL125-56  
PL207-14



1A.刃部の摩耗・光沢痕  
1B.刃部の摩耗・光沢痕(1Aの拡大)

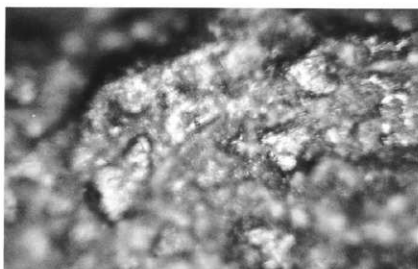
大形刃器  
1 b類  
SB1134  
PL75-7

2A.刃部の摩耗・光沢痕  
2B.刃部の摩耗・光沢痕(2Aの拡大)



2A

×50



1A

×100

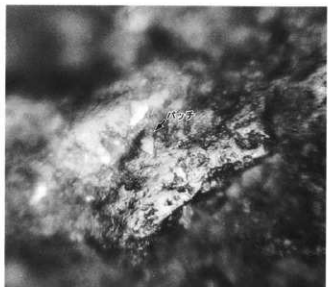


1B

×200

コーングロスパッチ

輝石

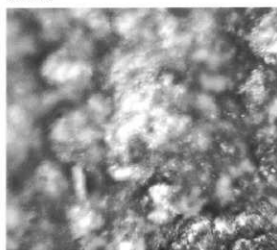


2B

×100



第249図



1A ×100

大形刃器

1b類 SB1183, PL89-1



1B ×200

1A. 刃部の摩耗・光沢痕

1B. 刃部の摩耗・光沢痕(1Aの拡大)

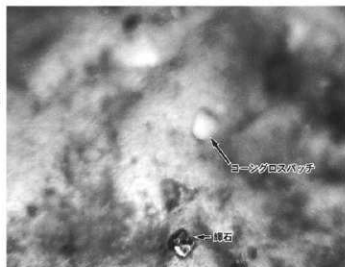
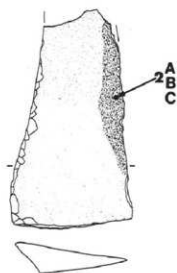
大形刃器

1b類

SB425

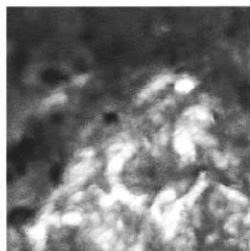
PL57-4

PL214-91



2B ×100

2B. 刃部の摩耗・光沢痕(2Aの拡大)



2A ×50

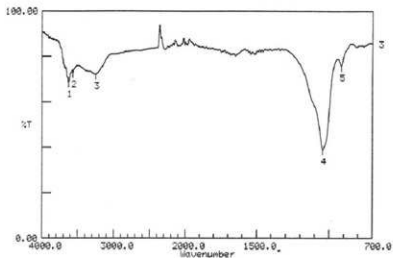
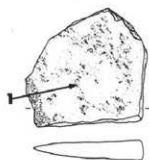
2A. 刃部の摩耗・光沢痕



2C ×200

2C. 刃部の摩耗・光沢痕(2Bの拡大)

第250図  
大形刃器  
2 # 類  
SB411  
PL55-2



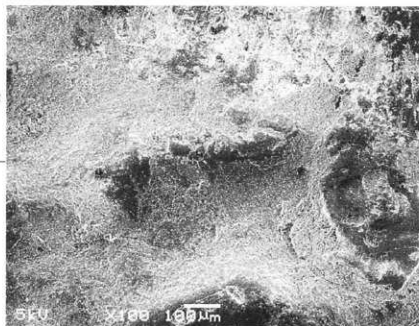
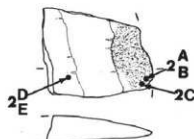
Condition  
upper 100.00 lower 0.00 depth 1.00

Peak table

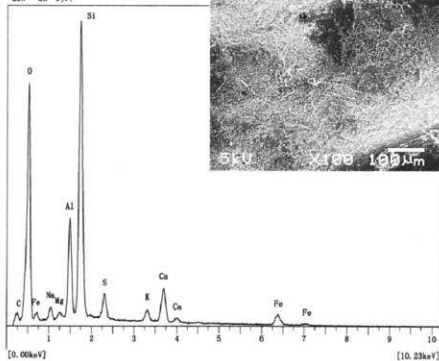
1: 3628.43( 68.5) 2: 3566.70( 72.7) 3: 3250.35( 72.6)  
4: 1043.58( 39.0) 5: 916.27( 75.7)

1 1. 基部付着物のFT-IR分析チャート

大形刃器  
2 # 7 類  
SB403



LIN 8K 3970

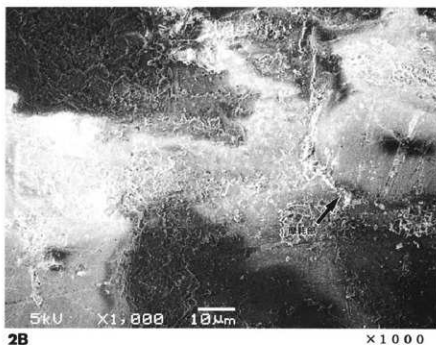


2A. 刃部摩耗痕のEDX分析チャート

2A ×100

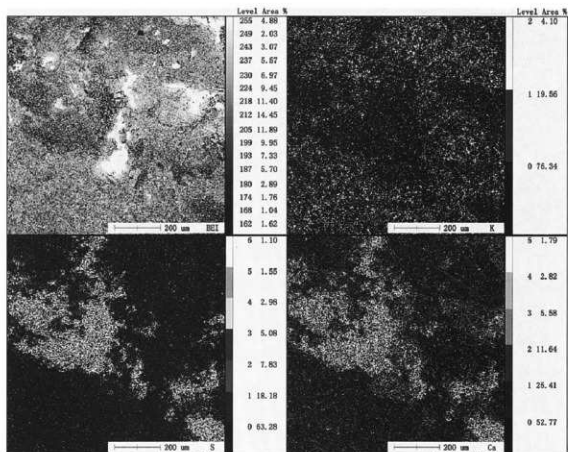
- 2A. 刃部の摩耗・光沢痕
- 2B. 刃部の摩耗・光沢痕(2Aの拡大)
- 2D. 刃部の摩耗・光沢痕

第251図



2B

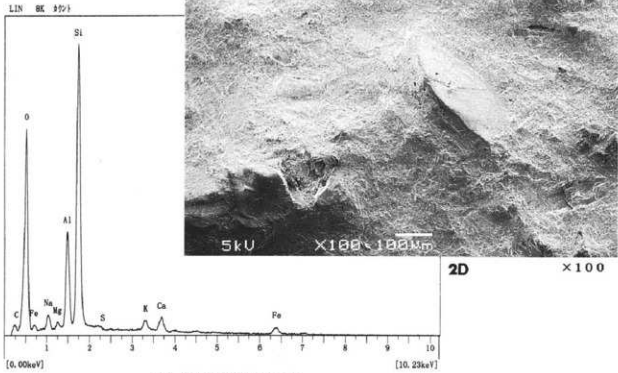
×1000



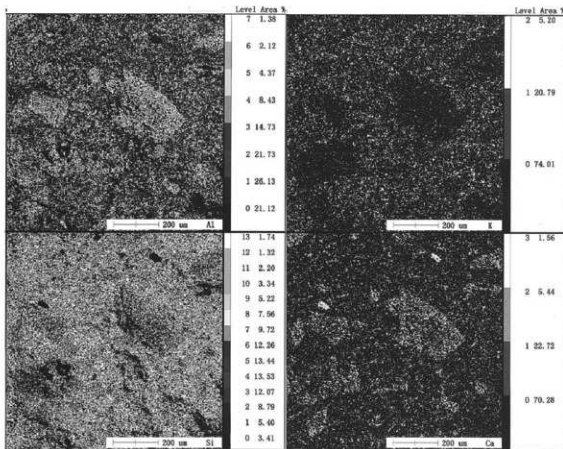
2C

2C. 刃部の主要元素分布 (K, S, Ca)

第252図



2D. 基部のEDX分析チャート

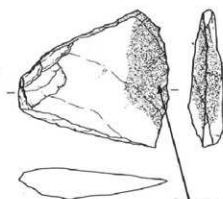


2E

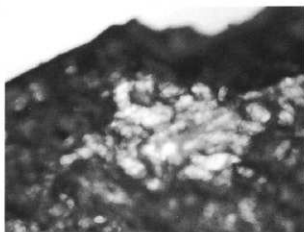
2E. 刃部の主要元素分布(Ca, K, Si, Al)

第253図  
大形刃器

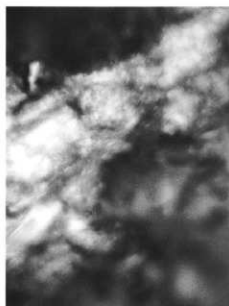
2a類  
HN19  
PL218-110



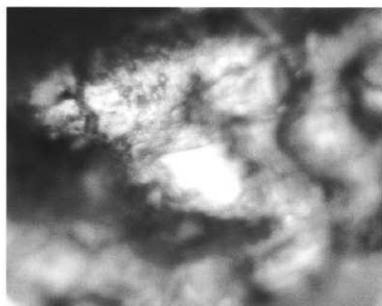
A,B,C  
D,E,F



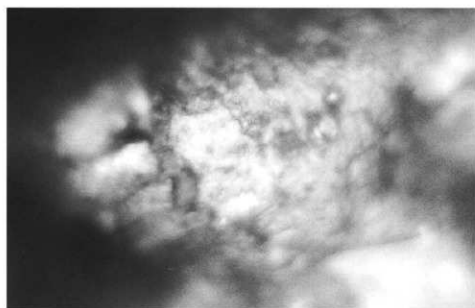
A. 刃部の摩耗・光沢痕 (No1) × 50



B. 刃部の摩耗・光沢痕(Aの拡大) × 100



C. 刃部の摩耗・光沢痕 × 100

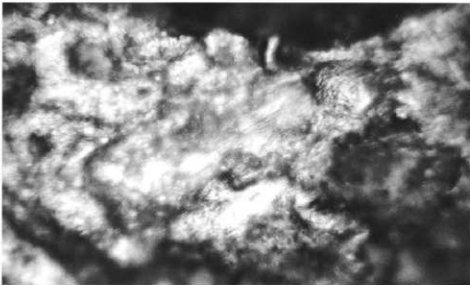


D. 刃部の摩耗・光沢痕(Cの拡大) × 200

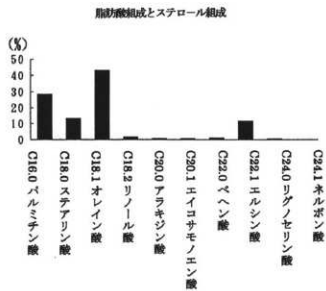
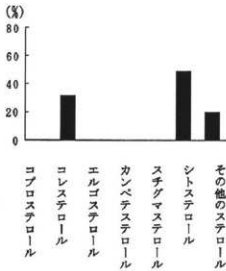
第254図



E 刃部の摩耗・光沢痕(NaCl) ×100

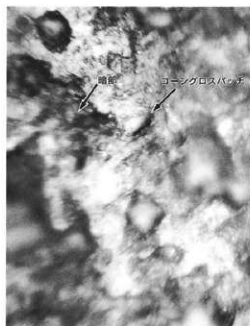
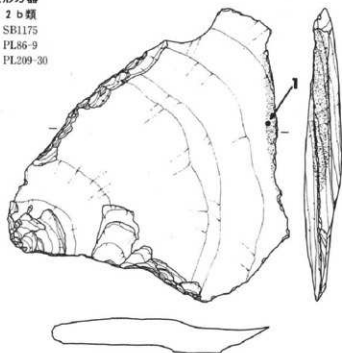


F 刃部の摩耗・光沢痕 ×100



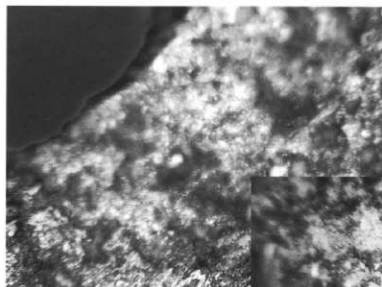
第255図  
大形刃器

2b類  
SB1175  
PL86-9  
PL209-30



1 × 200

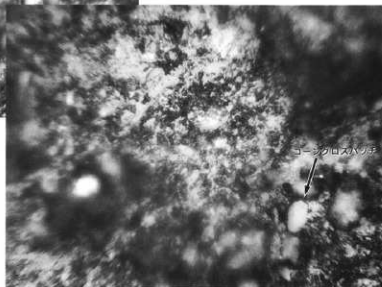
1.刃部の摩耗・光沢面



2A × 100

2A.刃部の摩耗・光沢面  
2B.刃部の摩耗・光沢面(2Aの拡大)

大形刃器  
2b類  
II E17  
PL209-34



2B × 200

第256図

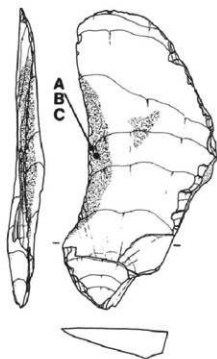
大形刃器

2b類

SB1141

PL77-1

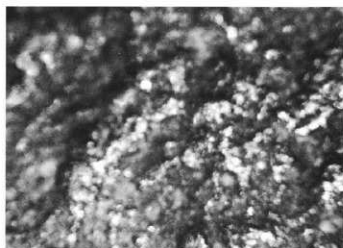
PL212-51



A. 刃部の摩耗・光沢面

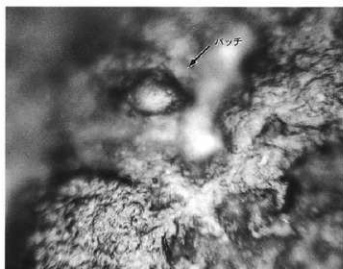
B. 刃部の摩耗・光沢面(Aの拡大)

C. 刃部の摩耗・光沢面(Bの拡大)



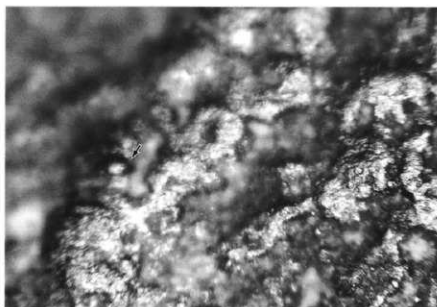
A

$\times 50$



C

$\times 200$

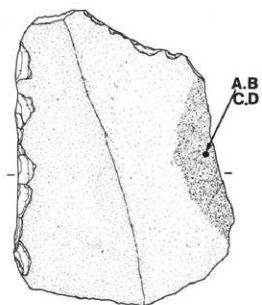


B

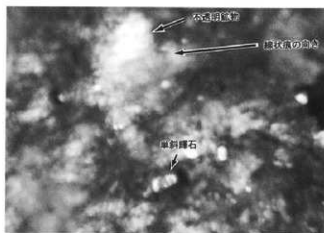
$\times 100$



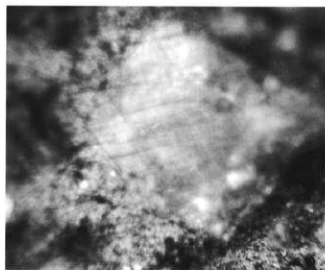
第257図  
大形刃器  
2 b類  
VQ24



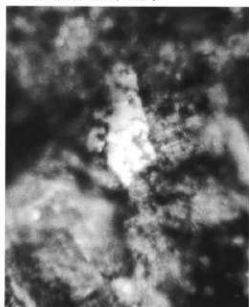
- A. 刃部の摩耗・光沢痕・線状痕
- B. 刃部の摩耗・光沢痕(Aの拡大)
- C. 刃部の摩耗・光沢痕
- D. 刃部の摩耗・光沢痕(Cの拡大)



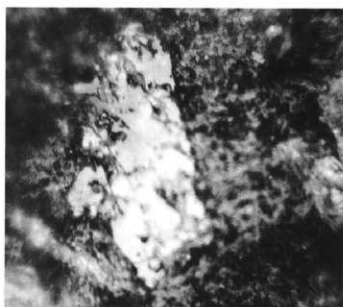
A × 50



B × 100



C × 100



D × 200

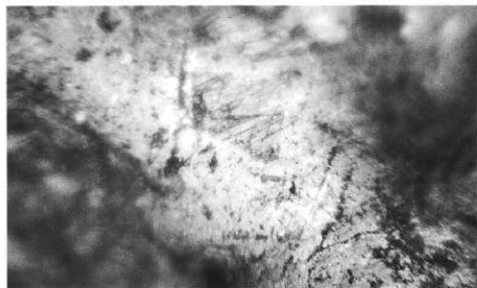
第258図  
大形刃器  
2b類  
SB1126  
PL73-11



**A** 刃部の摩耗・光沢面 × 50



**B** 刃部の摩耗・光沢面(A)の拡大 × 100



**C** 刃部の摩耗・光沢面(B)の拡大 × 200

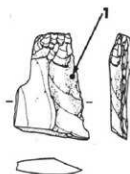
第259図

大形刃器

2c類

1C2

PL211-57



1

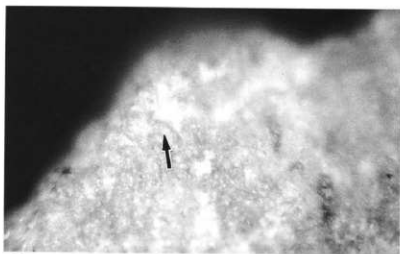
1.刃部の摩耗・光沢痕・線状痕

×100

2c類

1F7

PL211-58



2

2.刃縁の摩耗・光沢痕

×100

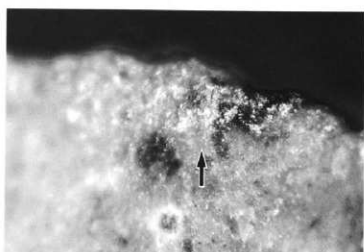


3

3.刃縁の摩耗・光沢痕

×100

2b類,SB286,PL16-2-PL210-38



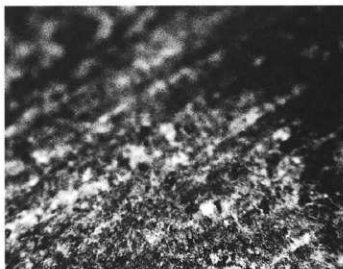
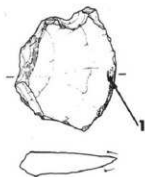
4

4.刃縁の摩耗・光沢痕

×100

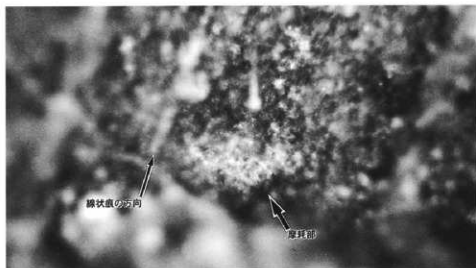
2c類,SB329,PL35-6-PL211-59

第260図  
大形刃器  
2 d 類  
1 A15  
PL212-67

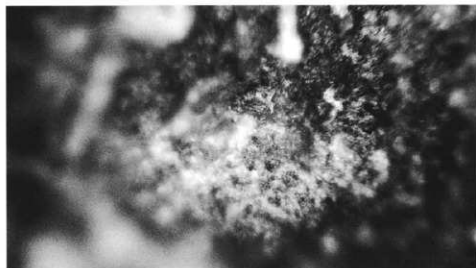


1 刃部の摩耗・線状痕 ×50

大形刃器  
2 d 類  
1 F19



2A 刃部の摩耗・光沢痕・線状痕 ×100



2B 刃部の摩耗・光沢痕(2Aの拡大) ×200

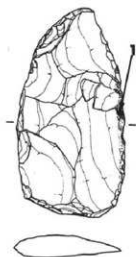
第261図

大形刃器

1類

SB332

PL212-70



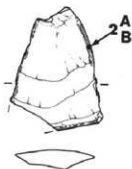
1 刃部の摩耗・光沢面 ×100

大形刃器

7類

S D12

PL127-70

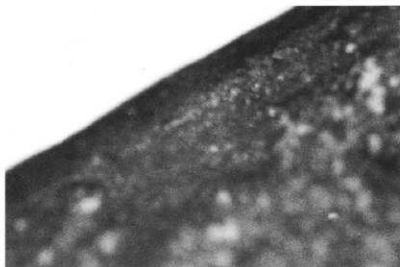
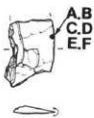


2A 刃部の摩耗・光沢面・結晶面 ×50



2B 刃部の摩耗・光沢面(2Aの拡大) ×100

第262図  
大形刃器  
7類  
SB277  
PL14-1  
PL213-85



A 刃部の摩耗・線状痕

× 50



B 刃部の摩耗・光沢面(Aの拡大)

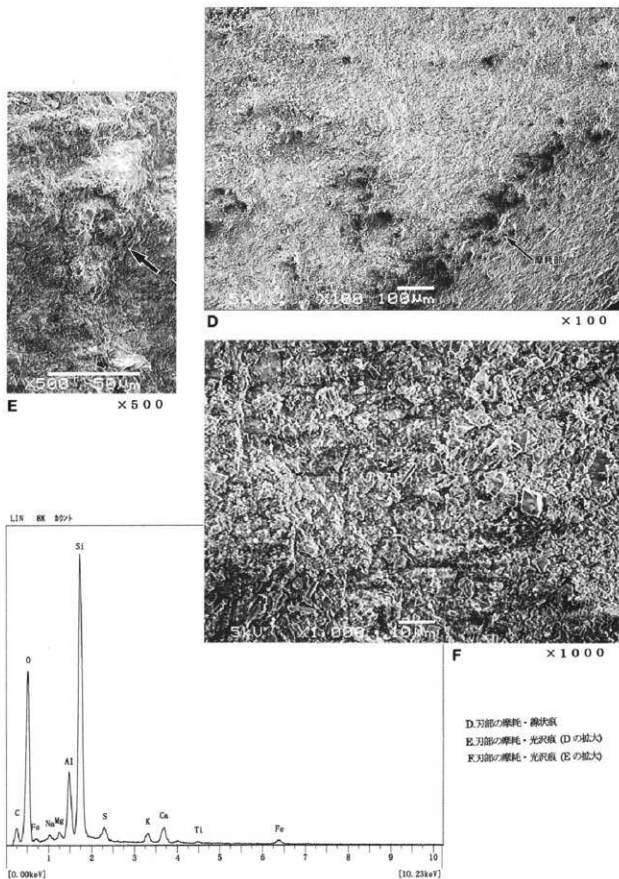
× 100



C 刃部の摩耗・光沢面(Bの拡大)

× 200

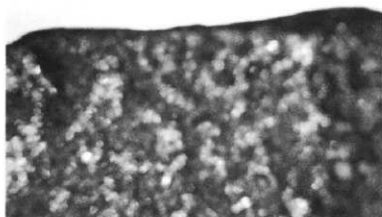
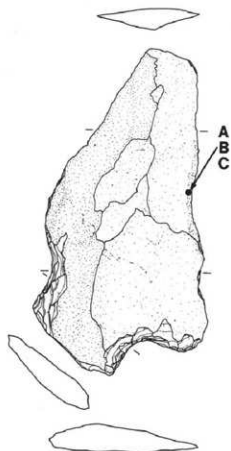
第263図



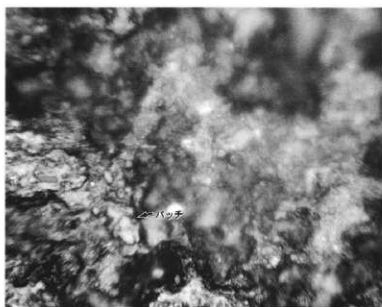
D. 刀部の磨耗・微体像  
 E. 刀部の磨耗・光沢像 (Dの拡大)  
 F. 刀部の磨耗・光沢像 (Eの拡大)

F. 刀部研削痕のEDX分析チャート

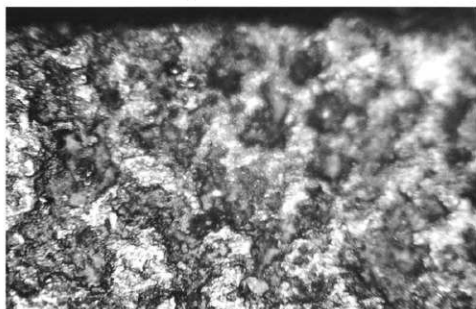
第264図  
大形刃器  
Ⅷ類  
SB1102  
PL59-8  
PL213-86



A A.刃部の摩耗・光沢面 × 50



C C.刃部の摩耗・光沢面(Bの拡大) × 200



B B.刃部の摩耗・光沢面(Aの拡大) × 100



第265図

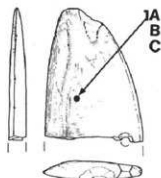
磨製石包丁

直線刃半月形

SD100

PL150-167

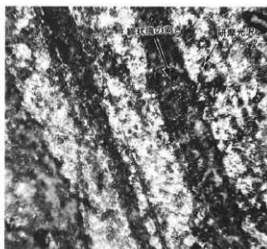
PL229-26



1A.刃部付近の研磨痕

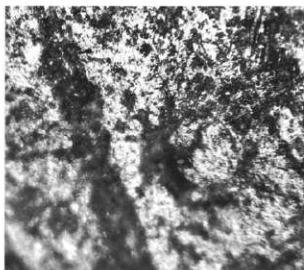
1B.刃部付近の研磨痕

1C.刃部付近の研磨痕(1Bの拡大)



1A

×100



1B

×100



1C

×200

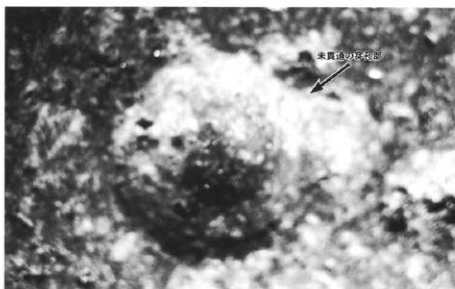
磨製石包丁

失敗品 E.

(外湾刃杏仁形)

II 124

PL228-15

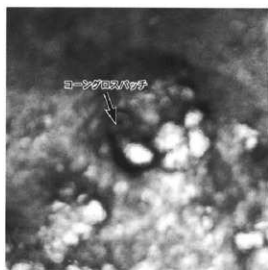
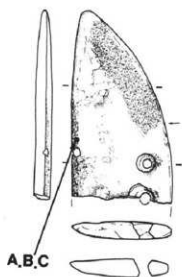


2

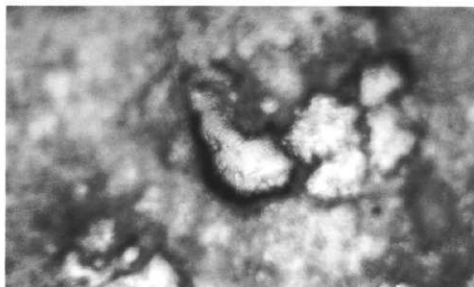
2.未貫通の穴部

×10

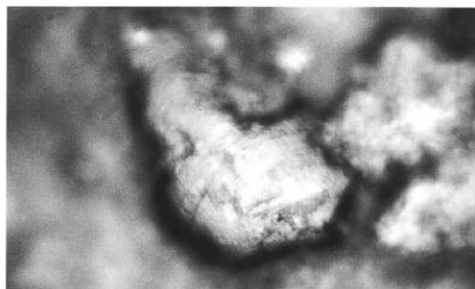
第266図  
磨製石包丁  
直線刃半月形  
II Q15  
PL.229-25



A 刃部の磨耗・光沢痕  $\times 50$



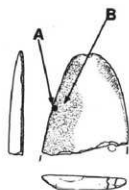
B 刃部の磨耗・光沢痕(Aの拡大)  $\times 100$



C 刃部の磨耗・光沢痕(Bの拡大)  $\times 200$

第267図

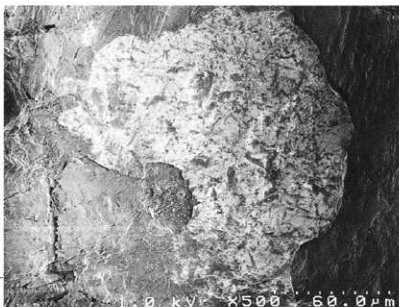
磨製石包丁  
直線刀半月形  
VII Y17-19  
PL229-24



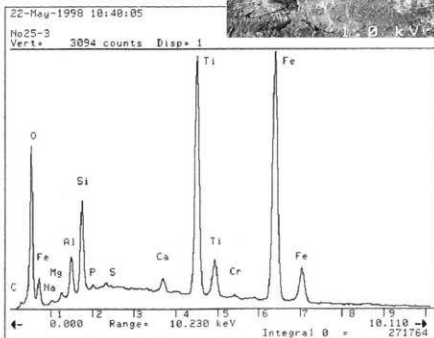
A. 刃部の摩耗痕  
B. 器物面の摩耗・光沢痕



A ×100



B ×500



B. 器物面のEDX分析チャート

第268図

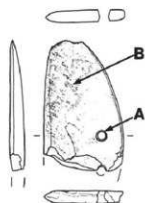
磨製石包丁

直線刃半月形

SB328

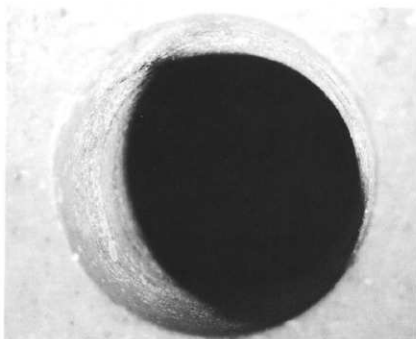
PL32-5

PL229-21



A.紐掛け用穴部

B.基部の「肌状」付着物



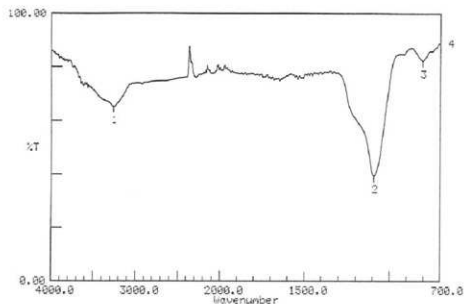
A

×10



B

×200



Condition  
upper 100.00 lower 0.00 depth 1.00

B. 基部付着物のFT-IR分析チャート

第269図

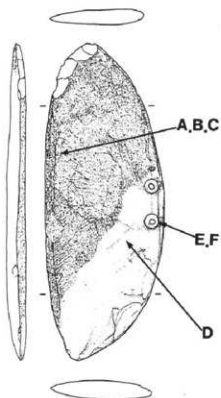
磨製石包丁

直線刃半月形

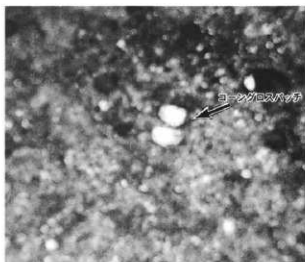
SB1248

PL89-9

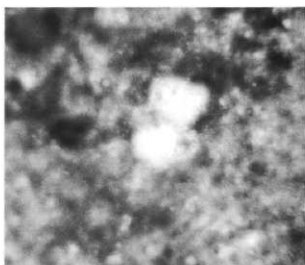
PL230-30



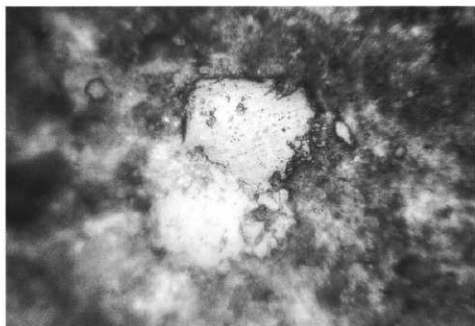
- A. 刃部の摩耗・光沢面
- B. 刃部の摩耗・光沢面(Aの拡大)
- C. 刃部の摩耗・光沢面(Bの拡大)



A  $\times 50$

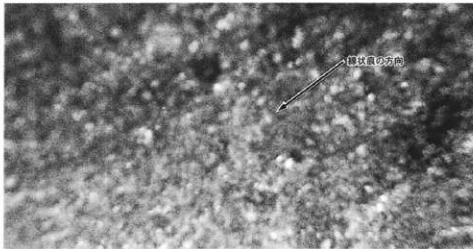


B  $\times 100$



C  $\times 200$

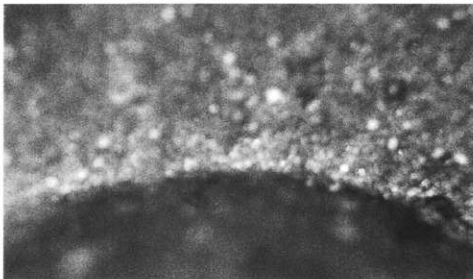
第270図



D

D.刃部の研磨痕

×50



E

E.穴部の磨つた面

×50



F

F.穴部の磨つた面(Eの拡大)

×100

第271図

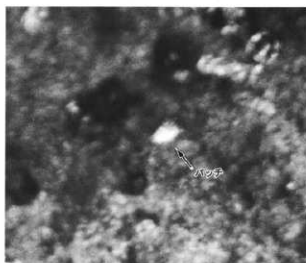
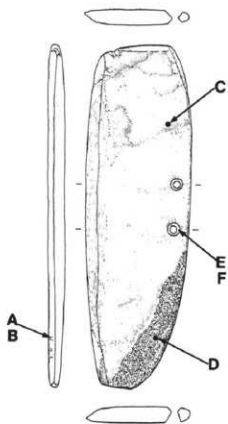
磨製石包丁

直線刃半月形

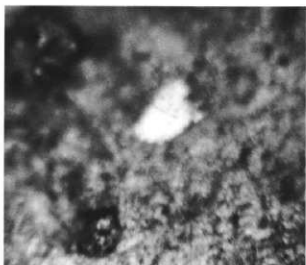
SB1248

PL89-10

PL229-34



A 刃部の摩耗・光沢痕  $\times 50$

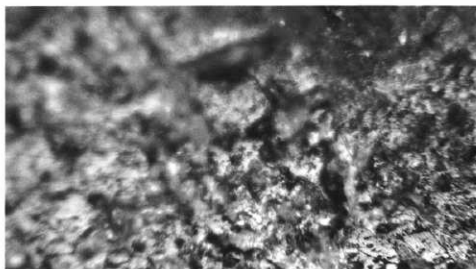


B 刃部の摩耗・光沢痕(Aの拡大)  $\times 100$

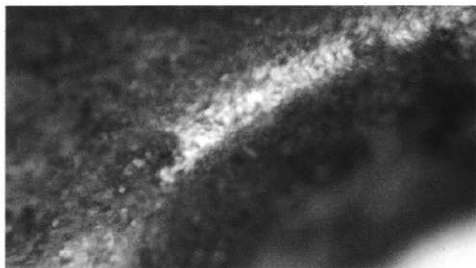


C 基部の腐蝕痕と摩耗・光沢痕  $\times 50$

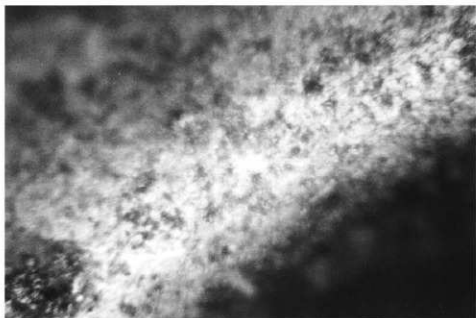
第272図



**D** D.基部の砥屑痕と摩耗・光沢痕(Cの拡大) × 100



**E** E.穴部の結ぶれ痕 × 50



**F** F.穴部の結ぶれ痕(Eの拡大) × 100



第273図

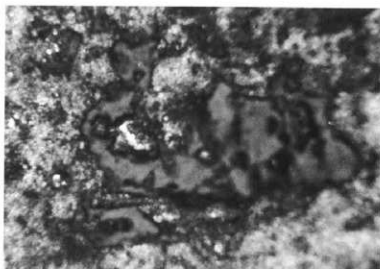
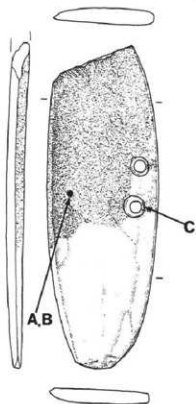
磨製石包丁

外湾刃杏仁形

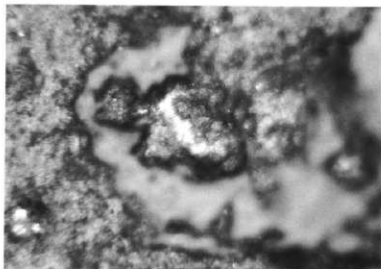
SD101

PL163-44

PL230-43



A 刀部の摩耗・光沢痕 × 50



B 刀部の摩耗・光沢痕(Aの拡大) × 100



C 穴部の継ぎれ面 × 22.5

## 第274図

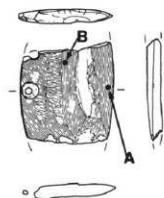
## 磨製石包丁

外溝刃者仁形

SB409

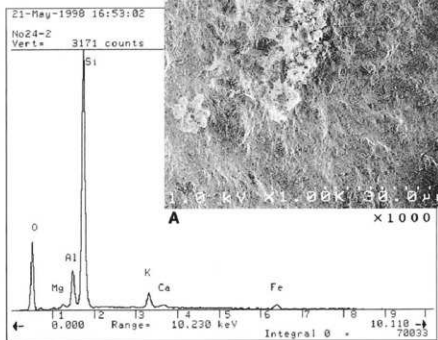
PL52-19

PL230-36

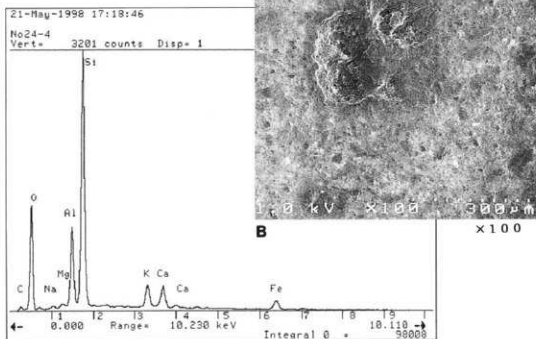


A.刃部の摩耗痕

B.基部の摩耗痕



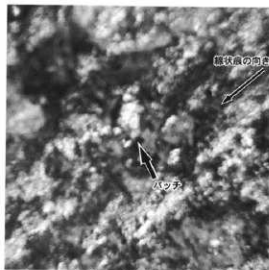
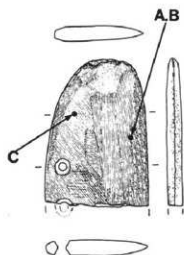
A. 刃部摩耗痕のEDX分析チャート



B. 基部摩耗痕のEDX分析チャート

第275図

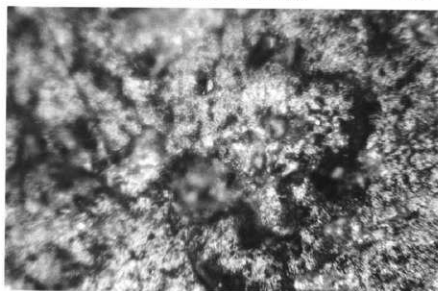
磨製石包丁  
外湾刃杏仁形  
SBI264  
PL96-5  
PL229-33



A 刀部の砥粒痕と摩耗・光沢痕 × 50



B 刃部の砥粒痕と摩耗・光沢痕 (Aの拡大) × 100



C 基部の摩耗・光沢痕 × 100

第276図

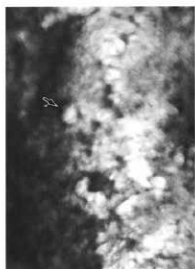
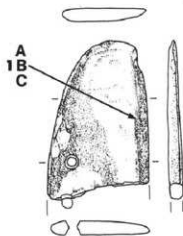
磨製石包丁

外湾刃杏仁形

SD100

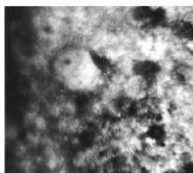
PL150-165

PL229-32

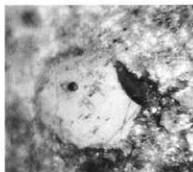


1A × 50

- 1A. 刃部の摩耗・光沢痕  
1B. 刃部の摩耗・光沢痕(1Aの拡大)  
1C. 刃部の摩耗・光沢痕(1Bの拡大)



1B × 100



1C × 200

磨製石包丁

外湾刃杏仁形

SD100, PL236-38

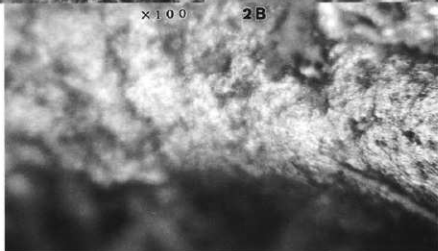
- 2A. 刃部の摩耗・光沢痕  
2B. 刃部の摩耗・光沢痕(2Aの拡大)  
2C. 穴部の組づけ痕



2A × 100



2B × 200



2C × 100

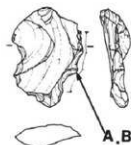
第277図

小形刃器

2c 類

SB268

PL10-8



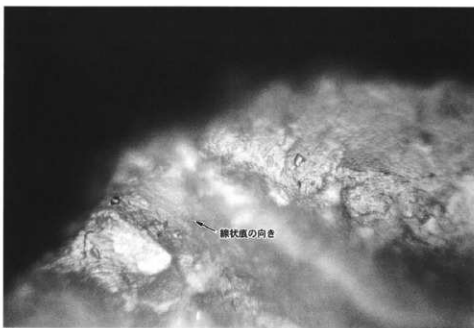
A. 刃縁の摩耗・光沢痕・線状痕

B. 刃縁の摩耗・光沢痕・線状痕(Aの拡大)



A

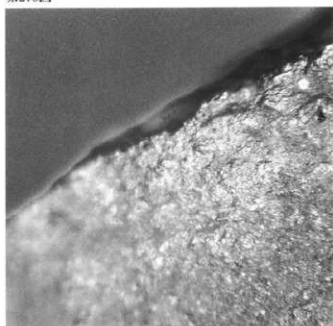
×100



B

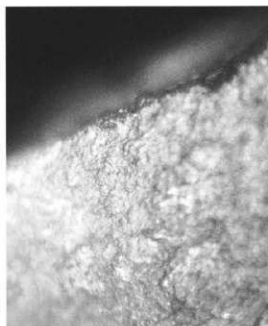
×200

第278図



A

×100



B

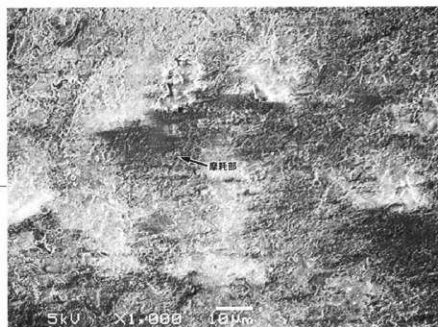
×200

小形刃器

2c 類

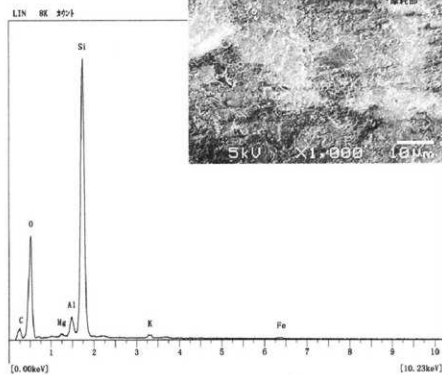
SB405

PL231-3



C

×1000



C. 刃部磨耗部のEDX分析チャート

- A. 刃部の磨耗・光沢面  
 B. 刃部の磨耗・光沢面(Aの拡大)  
 C. 刃部の磨耗・光沢面(SEM像)

第279図

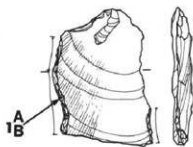
小形刃器

§ a・b c類

SB316

PL27-15

PL231-19



1A.刃縁の痕れ

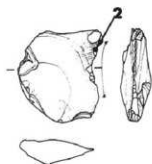
1B.刃縁の痕れ(1Aの拡大)

小形刃器

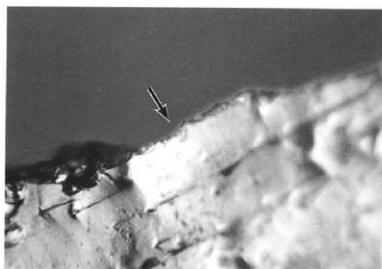
§c類

VU11

PL231-14

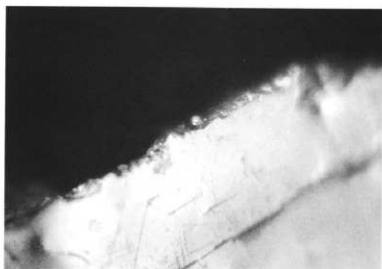


2.刃縁の痕れ(微小刃痕)



1A

×100



1B

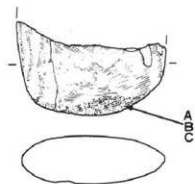
×200



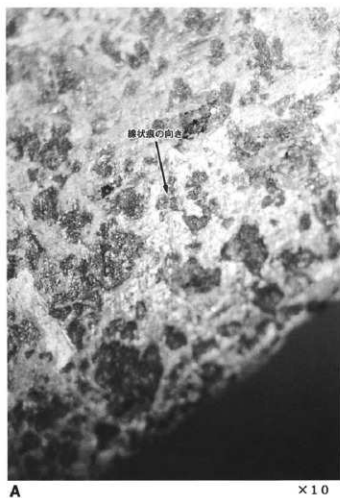
2

×100

第280図  
太型蛤刃石斧  
I a'類  
SD12



- A.刃部の摩耗・光沢痕  
B.刃部の摩耗・光沢痕(Aの拡大)  
C.刃部の摩耗・光沢痕(Bの拡大)



B

×22.5



C

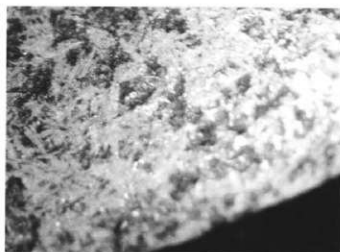
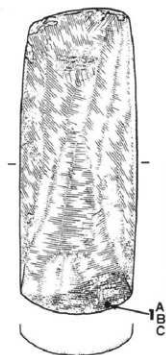
×60



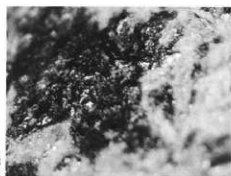
第281図

太型槍刃石斧

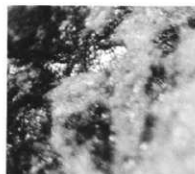
I b'類  
I P12  
PL234-15



1A 刀部の摩耗・光沢面 ×10



1B 刀部の摩耗・光沢面 (1Aの拡大) ×37.5



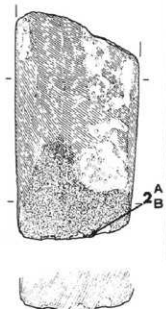
1C 刃部の摩耗・光沢面(1Bの拡大) ×60

太型槍刃石斧

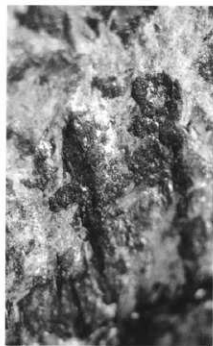
(I b')類

SB401

PL45-4 PL233-13

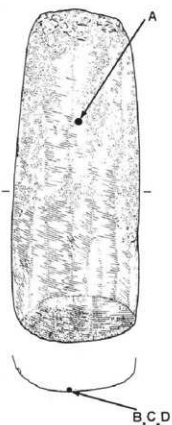


2A 刀部の摩耗・線状痕・微細砂眼痕 (2Aの拡大) ×10

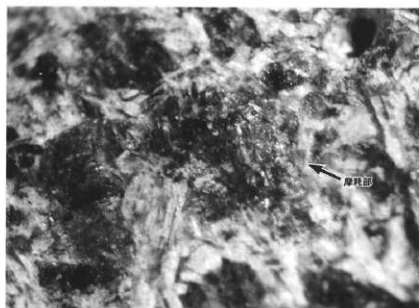


2B 刀部の摩耗・線状痕・微細砂眼痕(2Aの拡大) ×15

第282図  
木型輪刃石斧  
I b 類  
V G 20  
PL234-16

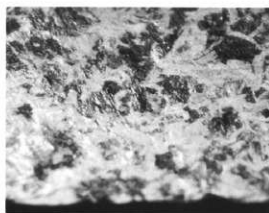


- A. 基部の摩耗痕  
B. 刃部の摩耗・線状痕・光沢痕  
C. 刃部の摩耗・線状痕・光沢痕(Bの拡大)  
D. 刃部の摩耗・線状痕・光沢痕(Cの拡大)



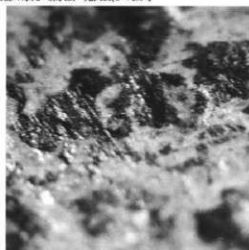
A

× 30



B

× 10



C

× 22.5



D

× 52.5

第283図

太型蛤刃石斧

I b'類

SB265

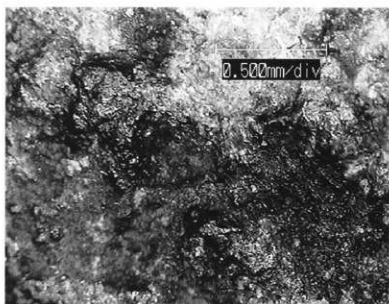
PL8-7

PL234-17

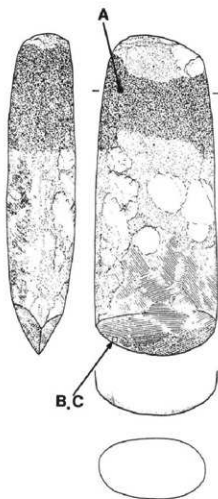
A. 基部の装着痕・ターム状付着物

B. 刃縁の摩耗・溝状痕

C. 刃縁の摩耗・溝状痕(Bの拡大)



A

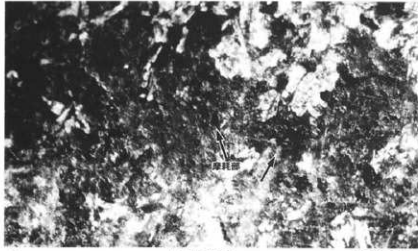


B



C

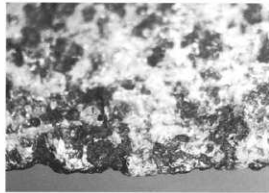
第284図  
 太型給刃石斧  
 I c'類  
 SB1284  
 PL101-5  
 PL235-23



A

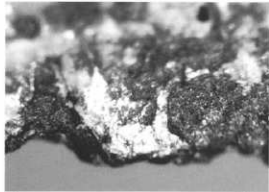
A 基部の摩耗痕

x22.5



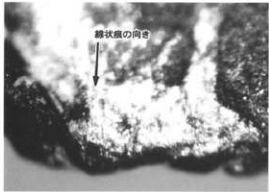
B

x10



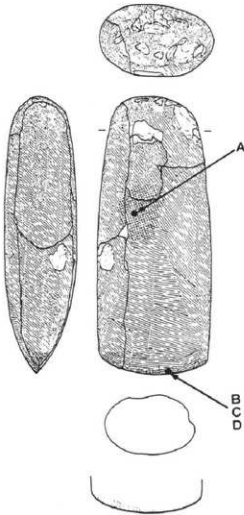
C

x30



D

x60



B.刃縁の摩耗・光沢痕

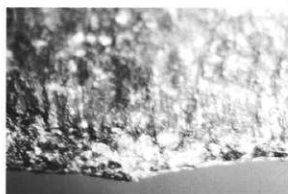
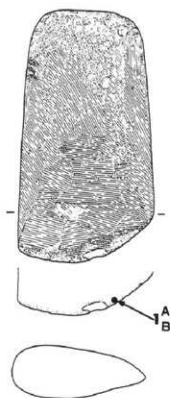
C.刃縁の摩耗・光沢痕(Bの拡大)

D.刃縁の摩耗・光沢痕・磨状痕(Cの拡大)

第285図

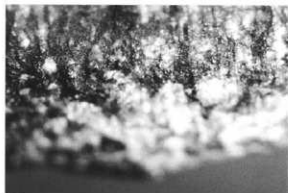
太型蛤刃石斧

I c'類  
SB1181  
PL87-8  
PL236-32



1A

× 10



1B

× 22.5

1A. 刀縁の摩耗・線状痕

1B. 刀縁の摩耗・線状痕(1Aの拡大)

太型蛤刃石斧

I c'類  
II E12-17  
SB1151  
PL236-34

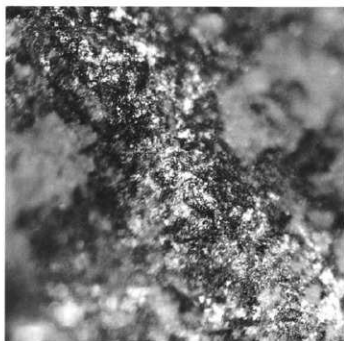
2A. 刀部付近の摩耗・光沢痕

2B. 刀部付近の摩耗・光沢痕(2Aの拡大)



2A

× 15

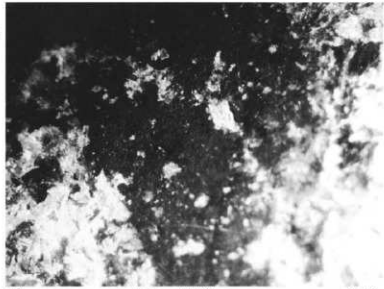
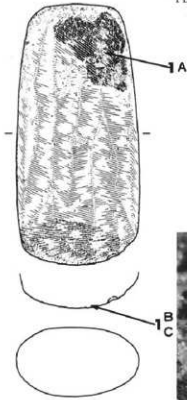


2B

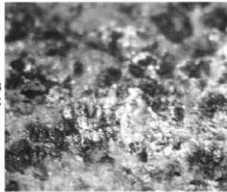
× 45

第286図

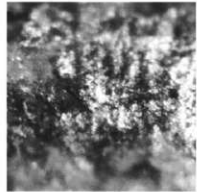
木型絵刃石斧  
I c'類  
I F14  
PL.235-21



1A 「タール状」付着物 ×10

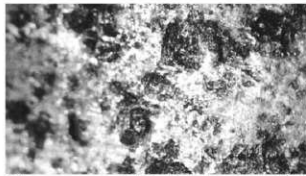


1B 刃部の摩耗・線状痕 ×15

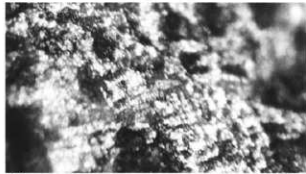


1C 刃部の摩耗・線状痕(1Bの拡大) ×30

木型絵刃石斧  
I c'類  
SB319  
PL.28-7  
PL.236-30

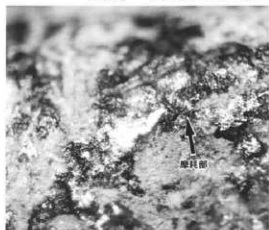


2A 刃部付近の摩耗・光沢痕 ×10

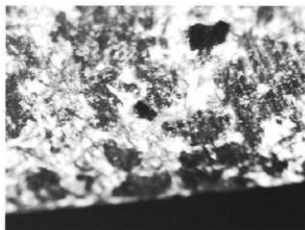


2B 刃部付近の摩耗・光沢痕(2Aの拡大) ×45

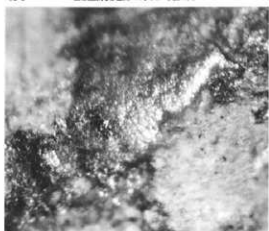
第287図 太型蛤刃石斧  
I d'類 SB1259 PL93-4, PL237-44



1A 基部断面部の摩耗・光沢面 × 30



1C 刃縁の摩耗・線状痕 × 15

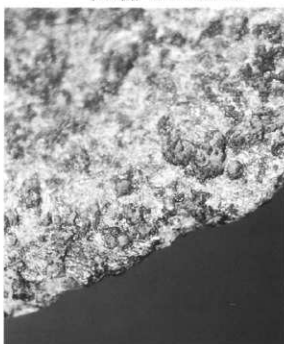


1B 基部断面部の摩耗・光沢面(1Aの拡大) × 60



1D 刃部の摩耗・線状痕(1Cの拡大) × 30

太型蛤刃石斧  
(I d')類 SD100 PL151-119



2A 刃縁の摩耗・光沢面 × 10



2B 刃縁の摩耗・光沢面(2Aの拡大) × 22.5

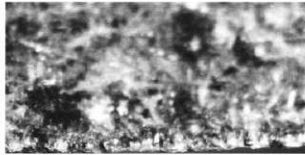
第288図

扁平片刃石斧

II a類  
SD100  
PL152-126  
PL242-51

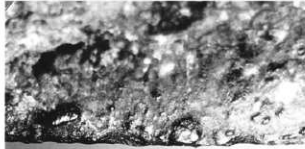


1. 刃部先端の摩耗・線状痕



1

×15



2A

×10

扁平片刃石斧

II a類  
SB1113  
PL69-11  
PL242-49



2A. 刃部先端の摩耗・線状痕

2B. 刃部先端の摩耗・線状痕(2Aの拡大)

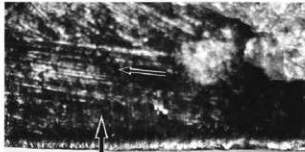
2C. 刃部の摩耗・線状痕・研磨痕

2D. 刃部の摩耗・線状痕



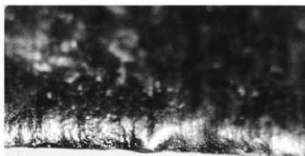
2B

×30



2C

×10



2D

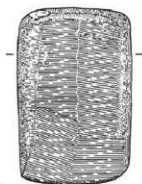
×30



第289図

扁平片刃石斧

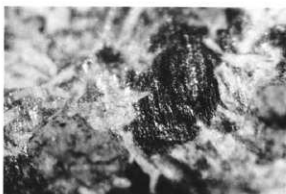
II b 類  
SB1258  
PL92-8  
PL242-55



1A. 刃部先端の摩耗・線状痕  
1B. 刃部先端の摩耗・線状痕  
(1Aの拡大)



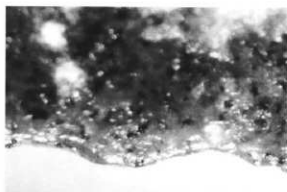
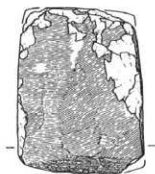
1A × 10



1B × 22.5

扁平片刃石斧

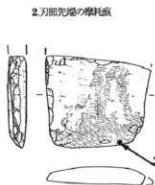
II b 類  
SB273  
PL11-12  
PL243-60



2 × 10

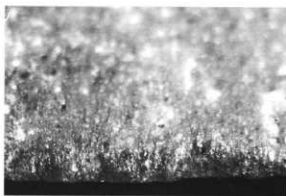
扁平片刃石斧

II b 類?  
SB265  
PL8-9  
PL243-65



2. 刃部先端の摩耗痕

3. 刃部先端の摩耗・線状痕



3 × 22.5

第290図

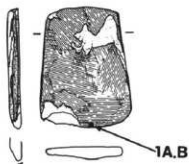
扁平片刃石斧

II b<sub>3</sub>類

SB260

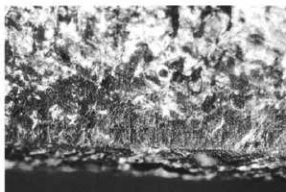
PL5-5

PL244-69



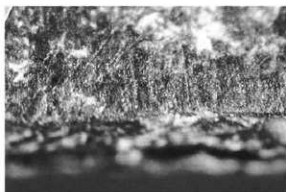
1A.刃部先端の摩耗・線状痕

1B.刃部先端の摩耗・線状痕(1Aの拡大)



1A

×15



1B

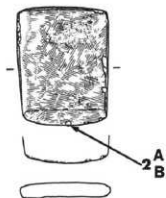
×30

扁平片刃石斧

II b<sub>3</sub>類

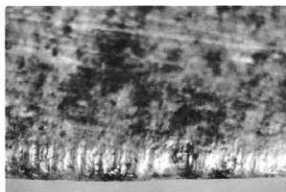
II N 2

PL244-78



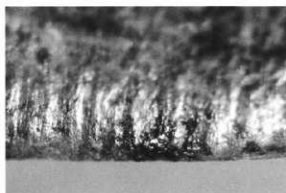
2A.刃部の摩耗・線状痕

2B.刃部の摩耗・線状痕(2Aの拡大)



2A

×10



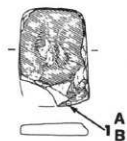
2B

×30

第291図

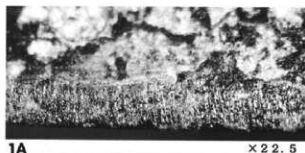
扁平片刃石斧

II c 類  
SB1280  
PL99-2  
PL244-83

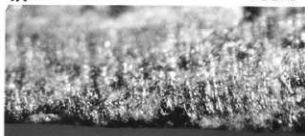


1A.刃部先端の摩耗・線状痕

1B.刃部先端の摩耗・線状痕(1Aの拡大)



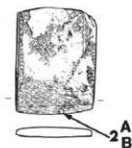
1A x 22.5



1B x 45

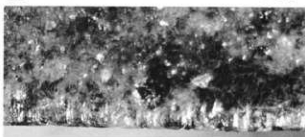
扁平片刃石斧

II c 類  
SK352  
PL117-7  
PL244-86



2A.刃部の摩耗・線状痕

2B.刃部の摩耗・線状痕(2Aの拡大)



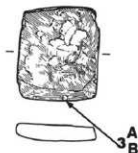
2A x 10



2B x 30

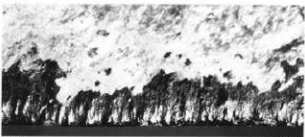
扁平片刃石斧

II c 類  
YK24  
PL244-87



3A.刃部先端の摩耗・線状痕

3B.刃部先端の摩耗・線状痕(3Aの拡大)



3A x 10

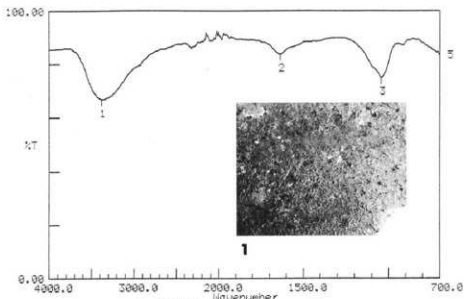


3B x 30

第292図  
 扁平片刃石斧  
 II・類  
 SB1118

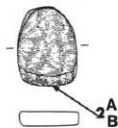


1. 「ダール状」付着物

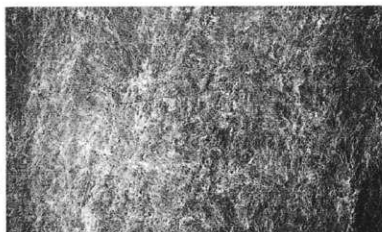


1. 刃部付着物のFT-IR分析チャート

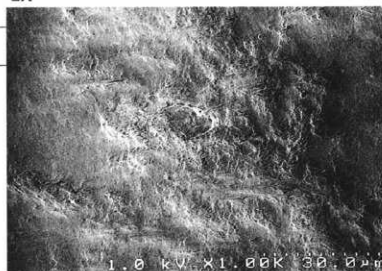
扁平片刃石斧  
 II・類  
 VQ 4  
 PL245-100



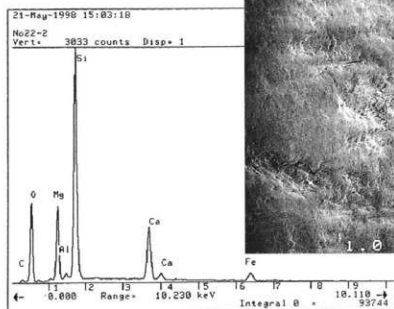
2A. 刃部付近の摩耗痕  
 2B. 刃部付近の摩耗痕(2Aの拡大)



2A × 100



2B × 1000



2B. 刃部摩耗痕のEDX分析チャート

第293図

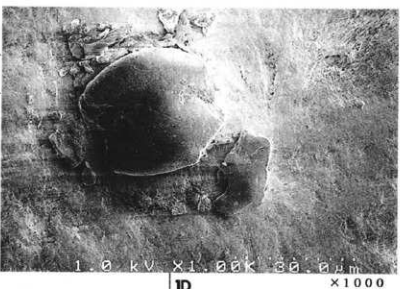
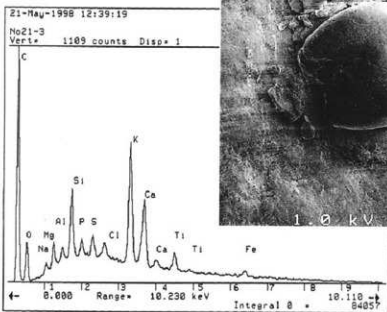
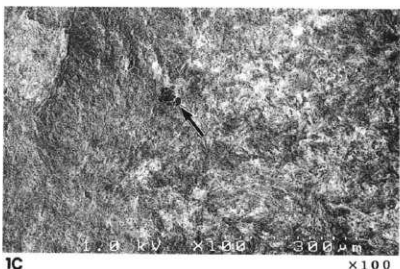
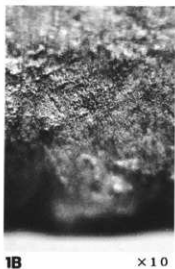
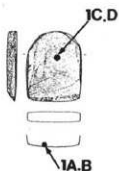
扁平片刃石斧

II ●類

SBH58

PL112-1

PL245-102



1D. 基部付着物のEDX分析チャート

1A. 刃部先端の観察面(SEM像)

1B. 刃部先端の観察面・線状痕

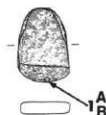
1C. 基部の観察面(SEM像)

1D. 基部の付着物(SEM像)

第294図

扁平片刃石斧

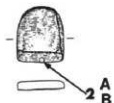
II e 類  
SB1282  
PL99-18  
PL245-101



1A. 刃部の磨耗痕  
1B. 刃部の磨耗痕(1Aの拡大)

扁平片刃石斧

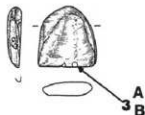
II e 類  
IV Y 8  
PL245-105



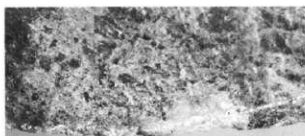
2A. 刃部の磨耗・線状痕  
2B. 刃部の磨耗・線状痕 (2Aの拡大)

扁平片刃石斧

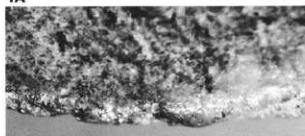
II e 類  
SD12  
PL129-93  
PL245-103



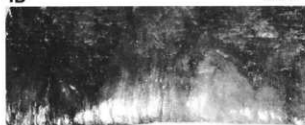
3A. 刃部の磨耗・線状痕  
3B. 刃部の磨耗・線状痕 (3Aの拡大)



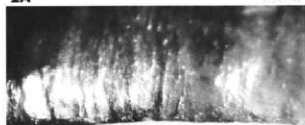
1A × 10



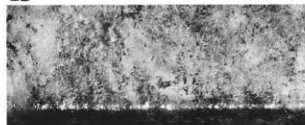
1B × 30



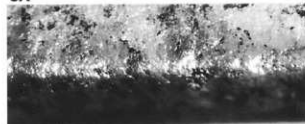
2A × 10



2B × 22.5



3A × 10



3B × 30

第295図

扁平片刃石斧

II d 類

V L 24

PL245-94

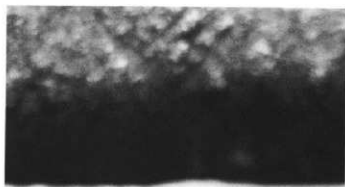


1A.刃部の磨耗痕

1B.刃部の磨耗痕(1Aの拡大)

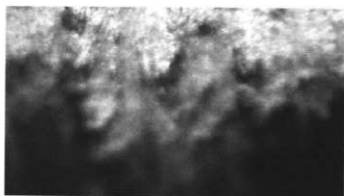
1C.基部の漆状付着物

1D.基部の漆状付着物(1Cの拡大)



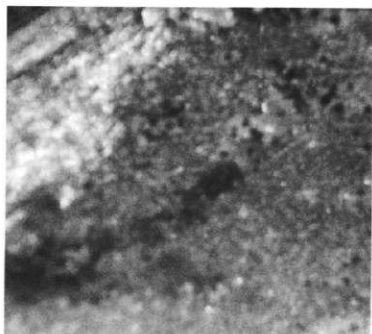
1A

×50



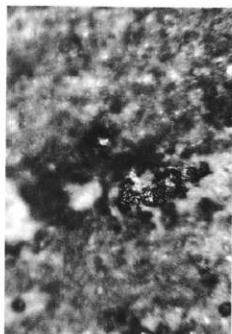
1B

×100



1C

×50



1D

×100

第296図  
ノミ状石器  
II f 類  
SB1253  
PL92-3  
PL260-51



1. 刃部先端の摩耗・線状痕

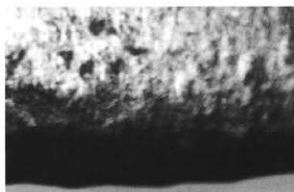


1 ×100

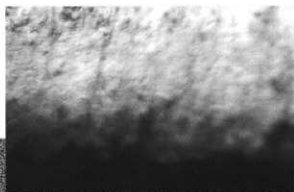
ノミ状石器  
II f 類  
I B10  
PL260-48



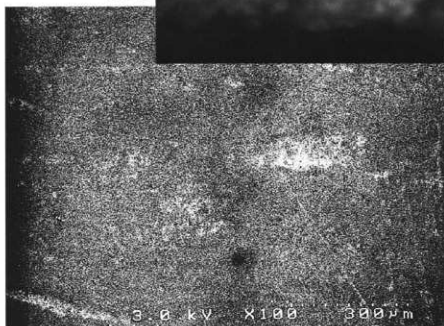
2A. 刃部先端の摩耗・線状痕  
2B. 刃部先端の摩耗・線状痕(2Aの拡大)  
2C. 刃部の断面(SEM像)



2A ×50



2B  
×100



2C ×100

3.0 kV X100 300 μm



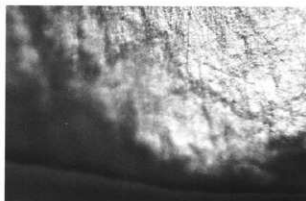
第297図

ノミ状石器

II e 類  
SD30  
PL137-8  
PL260-41

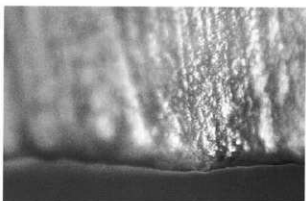


1. 刃部先端の摩耗・線状痕



1

×100



2A

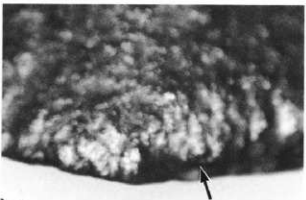
×100

ノミ状石器

II f 類  
SB1280  
PL99-3  
PL260-47



2A,B,C



2B

×100

2A. 刃部先端の摩耗・線状痕

2B. 刃部先端の摩耗・線状痕  
光沢面

2C. 刃部先端の摩耗・線状痕

光沢面(2B)の拡大



2C

×200

第298図

ノミ状石器

II f 類

SB1259

PL93-5

PL260-52



- A. 刃部先端の摩耗・線状痕
- B. 刃部先端の摩耗・線状痕(AのSEM像)
- C. 刃部先端の摩耗・線状痕
- D. 刃部先端の摩耗・線状痕(Cの拡大)



A

×200



B

×100



C

×100



D

×1000

第299図

ノミ状石器

II e 類

VU20

PL260-42



1. 刃部先端の摩耗・縞状痕



1

×100

ノミ状石器

II f 類

SB422

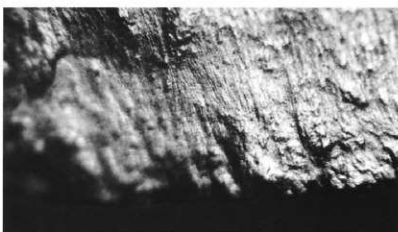
PL56-14

PL260-43



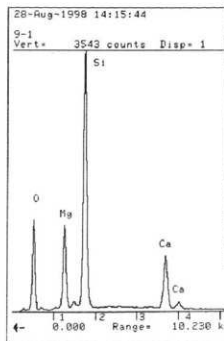
2A. 刃部先端の摩耗・縞状痕・光沢痕

2B. 刃部付近の摩耗痕



2A

×100



2B. 刃部付近のEDX分析チャート



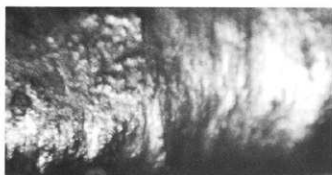
2B

×1000

第300図  
ノミ状石器  
II f 類  
SB422  
PL56-13  
PL260-54



1A.刃部先端の摩耗・繭状痕  
1B.刃部先端の摩耗・繭状痕(1Aの拡大)  
1C.刃部先端の摩耗・繭状痕(1BのSEM像)  
1D.刃部先端の摩耗面(1Cの拡大)



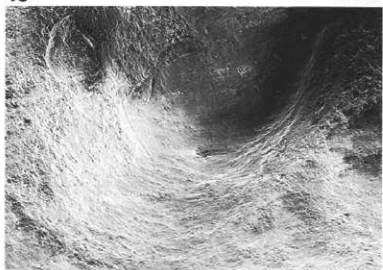
1A ×50



1B ×100



1C ×100

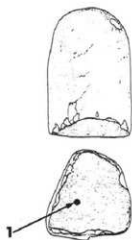


1D ×1000

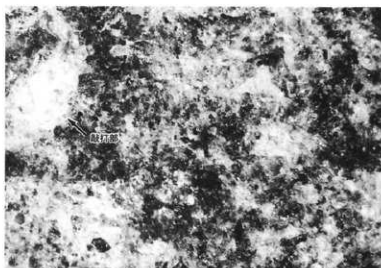
第301図

石槌

SB1156  
PL83-13  
PL246-3



1. 摩耗面「鈍面状」



1

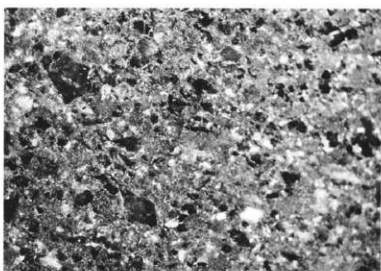
×30

石槌

SB265  
PL8-11  
PL246-2



2. 摩耗面「鈍面状」

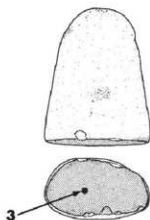


2

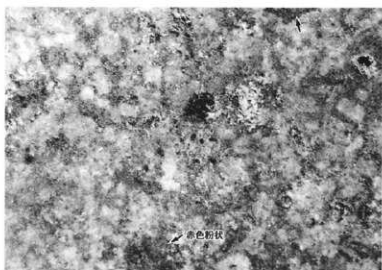
×15

石槌

SB1120  
PL246-1



3. 摩耗面「鈍面状」  
と赤色粉状付着物



3

×10

第302図

石槌

絵刀石斧乾用(1a'類)

SB1146

PL82-9

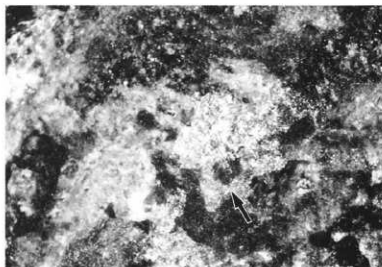
PL247-14



1A,B

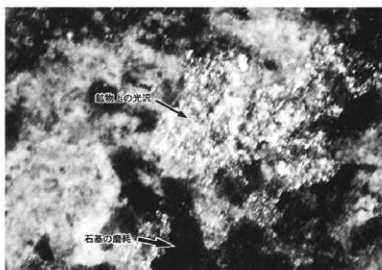
1A.摩耗面「鏡面状」

1B.摩耗面(1Aの拡大)



1A

×37.5



1B

×60

石槌

絵刀石斧乾用(1a'類)

SB1168

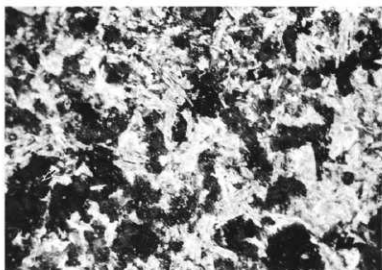
PL86-2

PL247-12



2

2.磨耗面「鏡面状」  
と赤色粉状付着物



2

×10

第303図

石鏃

蛤刃石鏃転用(1a'類)

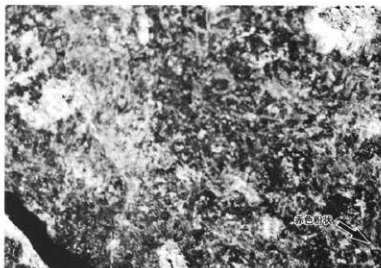
SB320

PL28-12

PL249-26



1. 厚磨面「碗面状」  
と赤色粒状付着物



1

×10

石鏃

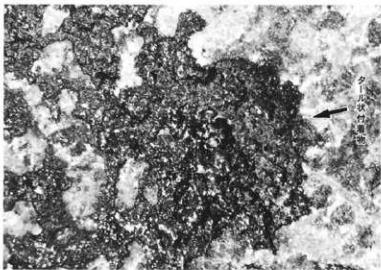
蛤刃石鏃転用(1b'類)

I C 11

PL249-29



2. 厚磨面「碗面状」  
とターゲル状付着物



2

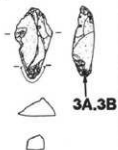
×10

石鏃

I 類

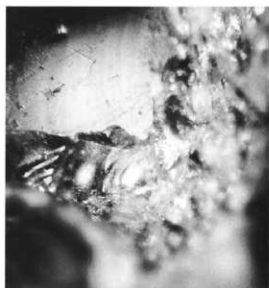
I P 15

PL251-7



3A

×50

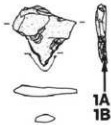


3B

×100

3A.3B. 鏃部の厚磨面

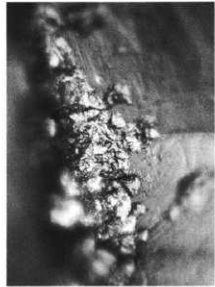
第304図  
石錐  
2 A類  
SK320



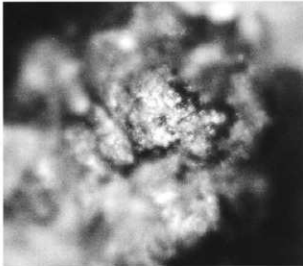
1 A.錐部の摩滅と光沢痕  
1 B.錐部の摩滅と光沢痕(1Aの拡大)



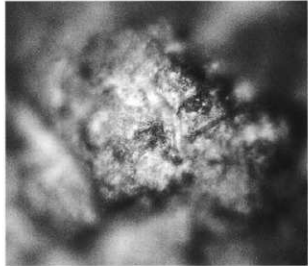
1A ×100



1B ×200

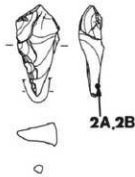


2A ×100



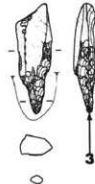
2B ×200

石錐  
2 A類  
VD 2  
PL251-12

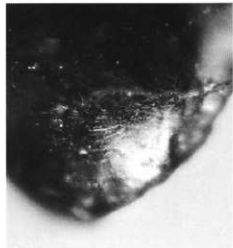


2A.錐部の摩耗痕  
2B.錐部の摩耗痕(2Aの拡大)

石錐  
2 B類  
I C11  
PL251-16



3.錐部の摩耗・線状痕



3 ×100

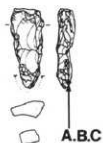


第305図

石鏃

2A類

VP13

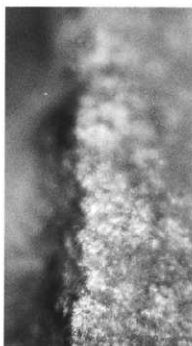


A. 鏃部の摩耗・光沢痕

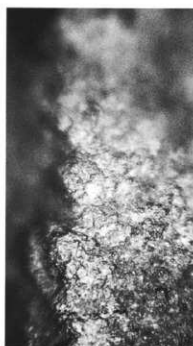
B. 鏃部の摩耗・光沢痕(Aの拡大)

C. 鏃部の摩耗・光沢痕

(SEM像)



×100



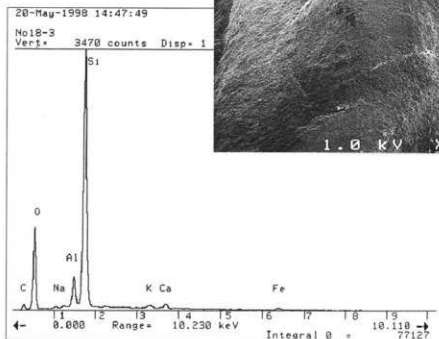
B

×200



C

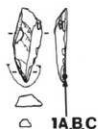
×100



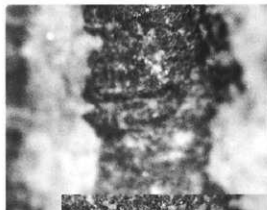
C. 鏃部摩耗痕のEDX分析チャート

第306図  
石鏃

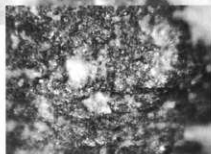
1類  
SB405  
PL51-11  
PL251-5



1A 1A.鏃部の摩耗・線状痕 ×10  
1B 鏃部の摩耗・線状痕(1Aの拡大)  
1C 鏃部の摩耗・線状痕(1Bの拡大)



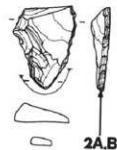
1B  
×100



1C ×200

石鏃

1類  
SK1994  
PL251-3



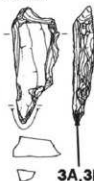
2A 2A.鏃部の摩耗・線状痕 ×10



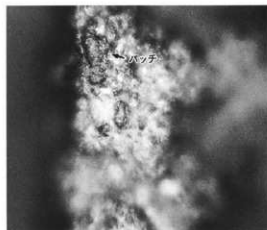
2B 2B.鏃部の摩耗・線状痕(2Aの拡大) ×22.5

石鏃

2A類  
SB1136  
PL74-12  
PL251-15



3A 3A.鏃部の摩耗・光沢痕 ×100

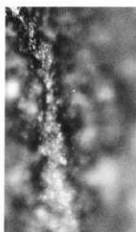
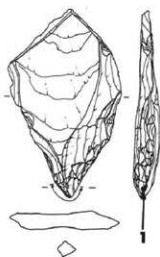


3B 3B.鏃部の摩耗・光沢痕(3Aの拡大) ×200

第307図

石錐

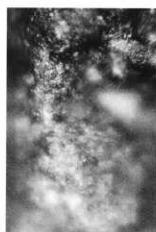
2 A類, SB287, PL17-18



1 × 200  
1. 錐部の摩耗・線状痕と光沢痕

石錐

2 A類  
SB287  
PL17-17, PL251-11

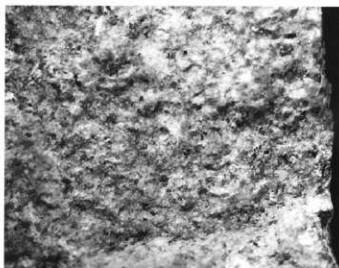
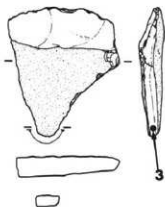


2 × 200  
2. 錐部の摩耗・線状痕と光沢痕

石錐

1類

II J 3



3 × 10  
3. 錐部の摩滅痕

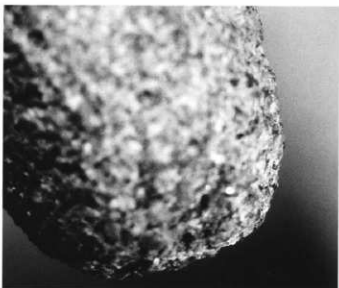
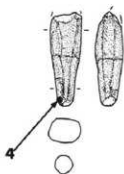
石錐

大形石錐

SB1136

PL74-13

PL251-21



4 × 10  
4. 錐部の摩滅痕

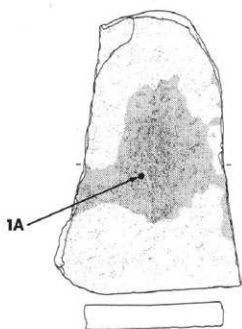
第308図

台石

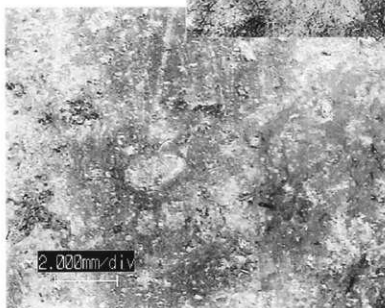
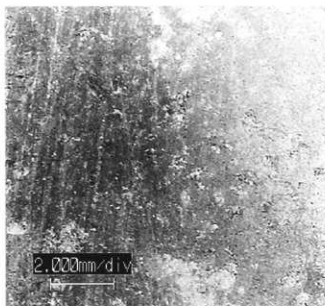
2種A<sub>1</sub>類

SB246

PL3-8

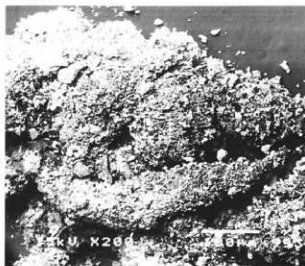


- 1A.使用面の摩耗痕「輪郭状」・線状痕
- 1B.使用面の摩耗痕
- 1C.使用面の摩耗痕と「赤色粉状」付着物
- 1D・E.「赤色粉状」付着物の分析サンプル



1C

第309図



1D

×200



1E

×1000

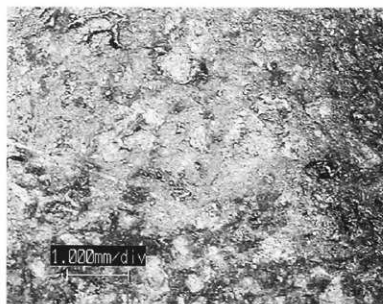
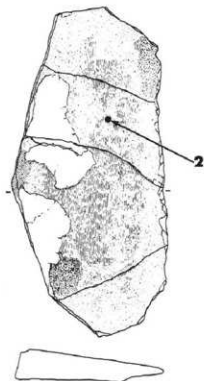
試料番号	Na <sub>2</sub> O	MgO	Al <sub>2</sub> O <sub>3</sub>	SiO <sub>2</sub>	K <sub>2</sub> O	CaO	TiO <sub>2</sub>	MnO	Fe <sub>2</sub> O <sub>3</sub>	NiO	Total	分析倍率
1D	1.16	2.13	10.28	39.85	0.86	10.17	1.77	1.46	32.32	0.00	100.00	×200倍
1E	1.09	2.40	8.77	39.44	1.41	13.00	2.77	1.52	29.39	0.23	100.02	×1000倍

X線回折分析による成分元素量

台石

2種A,類  
SB1124  
PL71-8

2使用面の厚切面

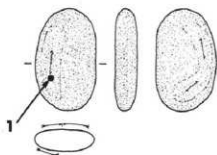


2

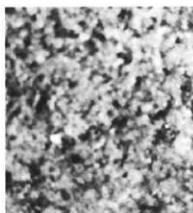
第310図

砥石

I 1a 類  
SB1284  
PL101-8  
PL252-8



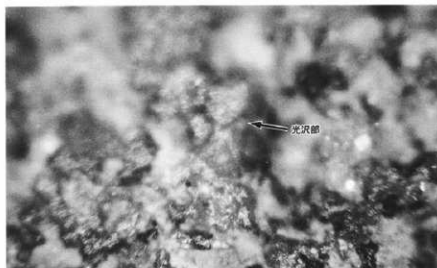
1.砥石の程度



1 × 10

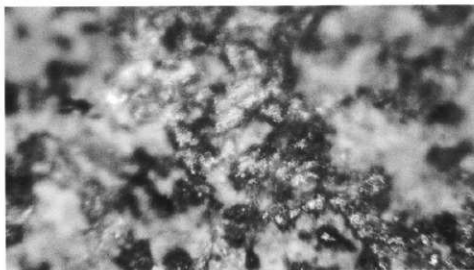
砥石

I 1a 類  
II M18  
PL252-5



2A × 100

2A.砥石の磨耗・光沢部  
2B.砥石の磨耗・光沢部

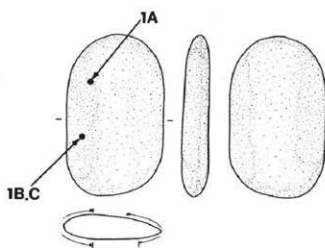


2B × 100

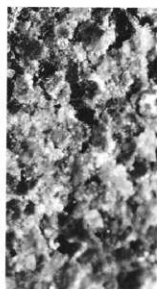
第311図

磁石

I 1b 類  
SB246  
PL2-16  
PL253-19



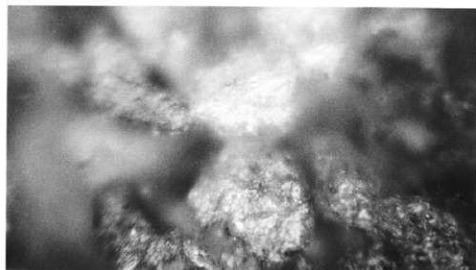
1A 磁面の粒度  
1B 磁面の稜角・光消角  
1C 磁面の稜角・光消角(1Bの拡大)



1A × 30



1B × 100



1C × 200