



2107



1017



2100



2011



2415



1204



1441



2700



2021



0004



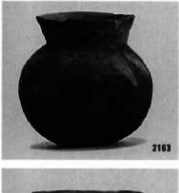
0075



2090



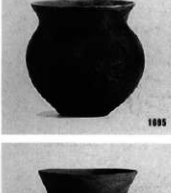
1300



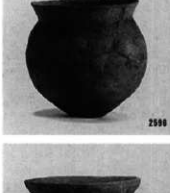
2103



1075



1005



2500



1010



1734



1774



2110



1632



0906



0548



2305



0185



2506



3081



0125



2647



2601



0685



2844



2711



1087



1733



1094



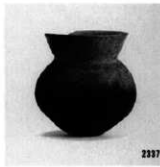
0124



2519



2214



2337



2182



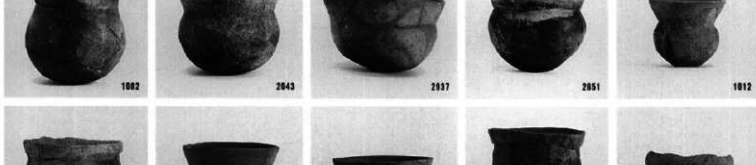
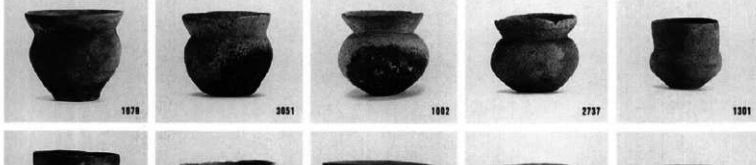
2045

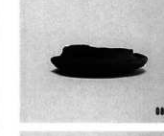
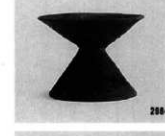
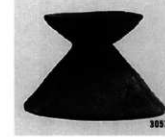


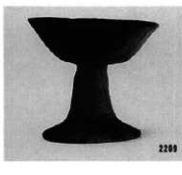
1083

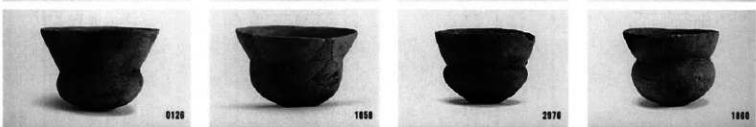
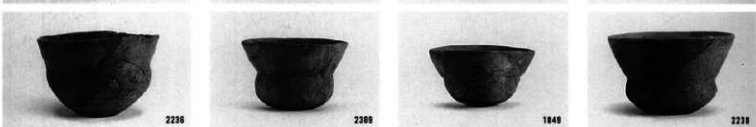
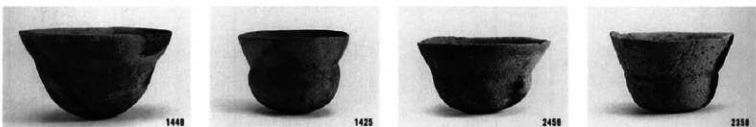
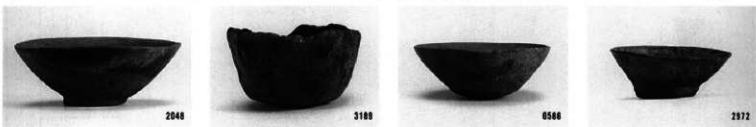
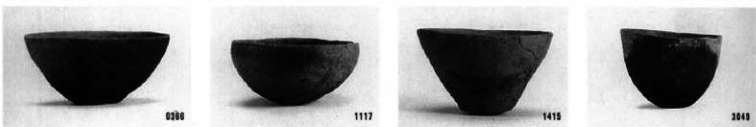


1983











1006



0128



3054



0370



0782



1343



0243



1381



1047



1120



1410



0120



2480



1043



2523



2500



1421



1200



1703



2040



2742



3055



0370



2507



2685



1481



2305



2707



2801



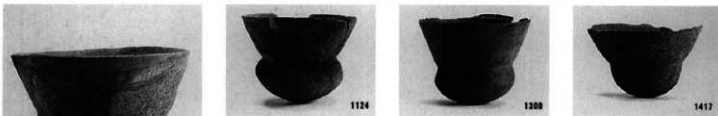
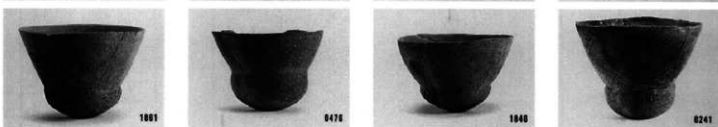
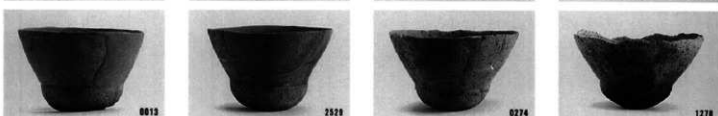
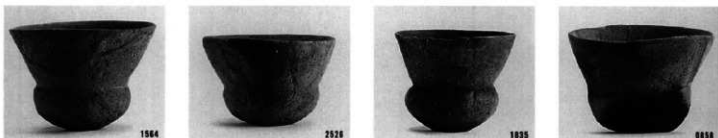
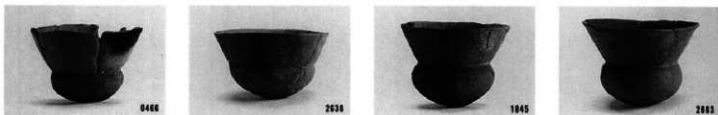
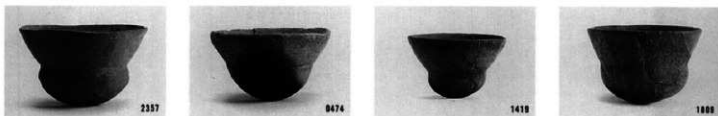
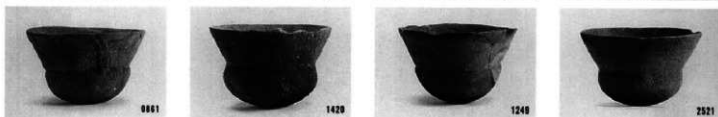
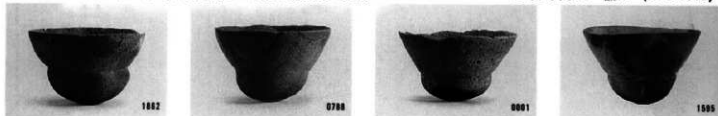
1003



1710



2005





1044



0408



2510



0057



1008



2004



1007



3193



1042



0470



0131



1125



2120



1725



0041



1054



0775



1054



0700



2500



0042



0471



1204



2000



2004



1051



2000



1737



1200



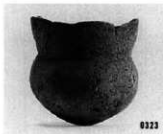
1400



1730



2074





2363



0814



0477



0833



1482



2789



0340



1454



1455



0354



0818



1481

※番号は収納番号、実測図との対応は観察表に掲載







0471



0444



0379



2674



0302



2564



0361



1400



2013



1022



2253



1487



2103



0355



1071



0300



0570



2240



0008



2670



2700



0022



1275



1040



1270



0011



1072



0054



0730



1107



1300



1390



0030



1307



1404



2490



0220



0227



2711



2742



1403



0223



1304



1733



1736



2330



2407



0224



1413



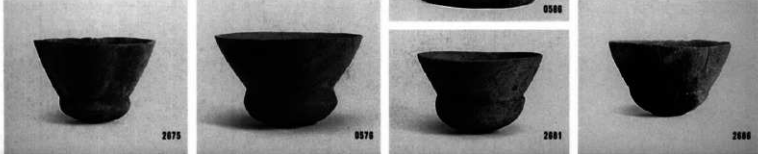
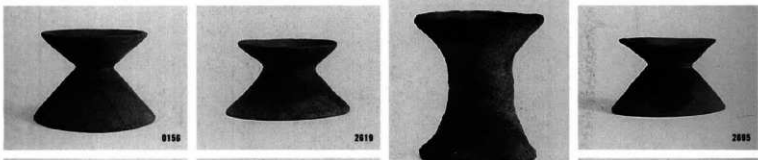
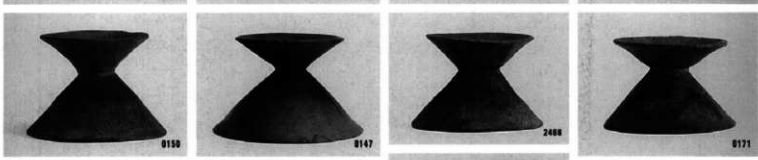
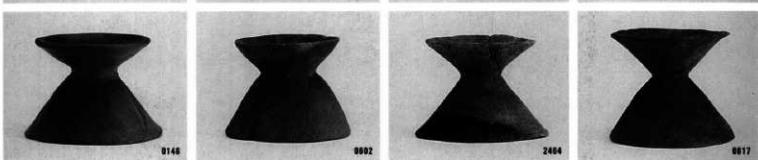
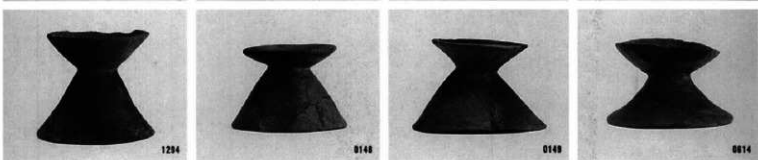
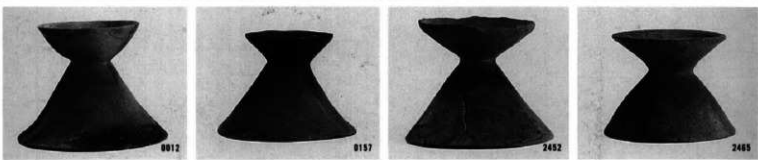
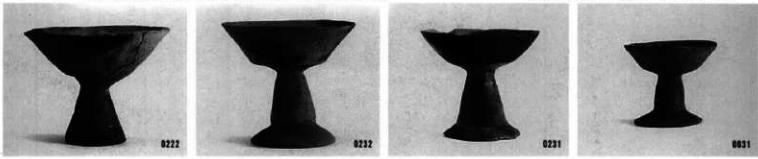
1302



1305



2022





1001



0522



1002



0131



1053



2020



2430



2430



1274



2000



0575



0537



1000



0130



1001



2250



2441



0120



2440



2002



1093



2444



1273



2000



1277



0560



0535



0500



1047



0130



0141



0120



1870



0571



0567



2020



0135



0570



0547



0551



0403



0132



0140



1037



0143



0550



0144



1232



1030



1043



2024



1042



0492



0481



2025



2012



2011



0480



※番号は収納番号、実測図との対応は観察表に掲載





SQ2883 3



SQ2883 4



SQ2888 14



SQ2812 1



SQ2812 14



SQ2812 2



SQ2812 12



SQ2815 1



SQ2817 18



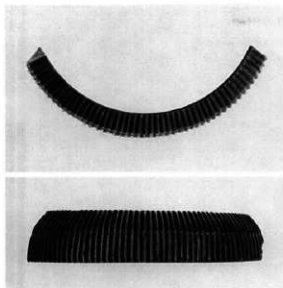
SX2802 1



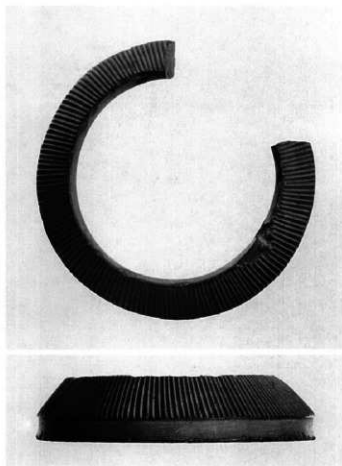
SX2802 12

*番号は収納番号、実測図との対応は観察表に掲載

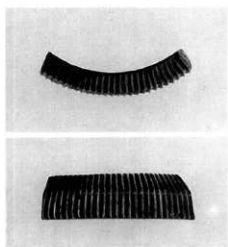
(1:1)



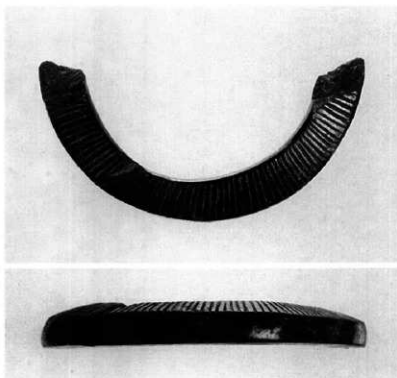
⑤-1区 SD1016



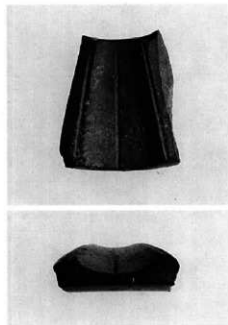
⑧-1区 SD1016



⑦-2区
S Q1004



⑩-1区 SD1016
S K2878



⑨-1区
SD1016

上

内

(1:1)

1 筒型石製品

S Q2016

2 紡錘車型石製品

S K1046



2

外

下



1

3~10 勾玉

3 ㊦-1 区検出面

4 S K2441

5 S K2757

6 S K2331

7 S D1016

㊦-1 区IVFG02

8 S D1016

㊦-1 区VWD11

9 S D1016

㊦-1 区VWC14

10 S D1016

㊦-1 区VWG12



3



4



5



6



7



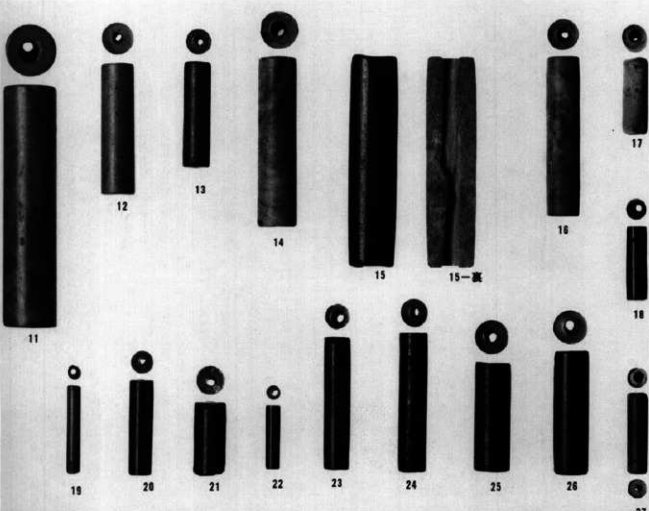
8



9



10



11~27

11 S K2828

12 S K2759

13 S K2759

14 S Q2016

㊦-1 区VRL15

15 S D1016

㊦-1 区IIE P08

16 S D1016

㊦-1 区VWG12

17 S Q1004

㊦-1 区II I L09

18 S D1016

㊦-1 区IIE P08

19 S K2027

20 S K2063-B

21 S K2189

22 S K2865

23 S D1007

24 S D1016

㊦-1 区IIE P09

25 S D1016

㊦-1 区IIE O09

26 S D1016

㊦-1 区VWB13

27 S D1016

㊦-1 区IVBF12

27

ガラス小玉・白玉

1~13(1:1)

1 S K 2863

2 S Q 1004

II J Q 08

3 S Q 2016

Y R N 01

4 S D 1016

㊟-1区 VWE 16

5 S D 1016

㊟-1区

6 S D 1016

㊟-1区 VWC 14

7 S D 1016

㊟-1区 VWC 14

8 S D 1016

㊟-1区 VWE 16

9~13 S Q 2020

12 滑石製素玉

13 滑石製白玉

小勾玉、白玉、管玉

14~112(1:1)

14~35 S K 2827

36~41 S K 2827 ?

42 S K 2047

43 S K 2759

44・45 S K 2871

46 S K 2843

47 S Q 2017

48 S K 2751(管玉)

49 S D 1016㊟-2区

(土製勾玉)

50・51 S D 1016

㊟-2区 ?

52~95 S D 1016

㊟-1区(VWE 16)

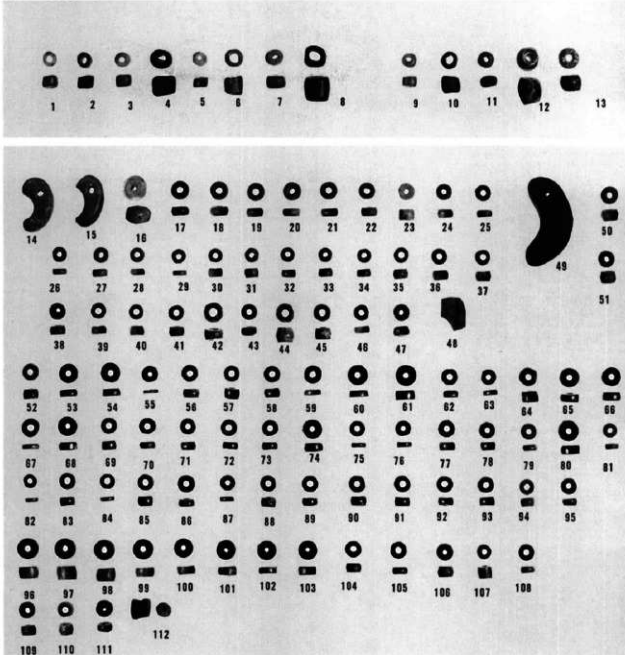
96~107 S D 1016

㊟-1区(VWE 16)

108 S D 1016㊟-1区

109~112 S D 1016

㊟-1区(VWE 16)



土製勾玉・土玉

113~115(1:1)

113 S Q 2016

114 S D 1016

115 S K 1050

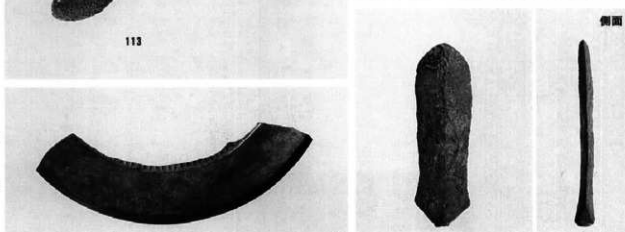


銅鏡116

S D 1016

銅鏃117

S D 1016



(1:1)

116

117



S K1025



S K1046



S K2003



S K2054



S K2127



S K2200



S K2290



S K2470



S K2744



S K2748



S K2750



S K2874



SD1007



SD1057



SD2013



SD1016



SD1016



SD1016



SD1016



SD1016



SD1016



SD1016



SD1016



SD1016



SD1016



SD1016



SD1016



SD1016



SD1016



SD1016



SD1016



SD1016



SD1016



SD1016



SD1016



SD1016



SD1016



SD1016



SD1016



SD1016



SD1016



SX1001



SQ1004



SQ1004



SQ1005



SQ2006



SQ2016-2



SQ2016-2



SQ2016-2



SQ2016-2



SQ2016-3



SQ2016



SQ2016



SQ2016-2



SQ2016



SQ2016-2



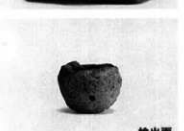
SQ2016-2



SQ2016-2



SQ2016



検出面



検出面



検出面



検出面



SD1016



1



2



3



異形土器・ミニチュア土器

1~6 (1:2)

1 SK2063

2 SQ1004

3 SQ2016

4 SK2296

5~6 SD1016



4



5



6



7



10



11



12



13



14



15



8



16



17



18



19



20



21

土製模造具

7~21 (1:2)

7 SQ2016

8 SD1016

9 SQ2016

10 SD1016

11 SQ2016

12 SK2057

13~15 SQ2016

16 SD2007

17 SQ2016

18 SD1016

19~20 SQ2016

21 SK1046

22 SK2745

23 SK2874

24 SD1016

25 SQ2016

26 SD1016

27 SQ2016

28 SQ1004

29 SK2565

30 SK2564

31 SD1011

32 SD1038



22



23



24



25



26



27



28



29



30

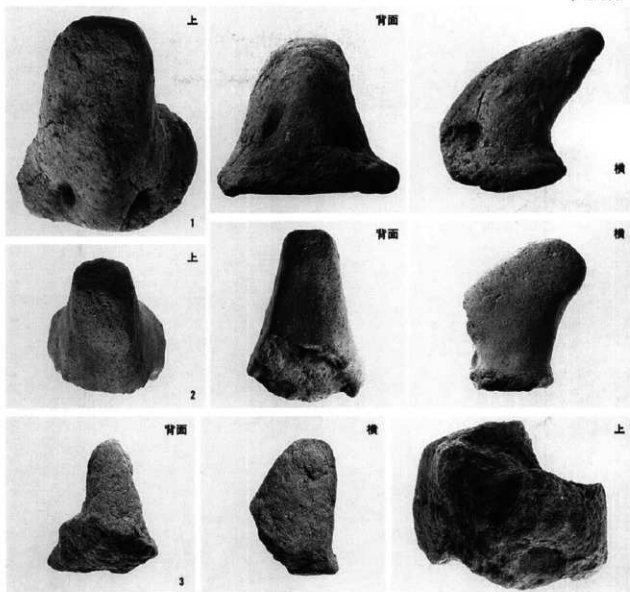


31

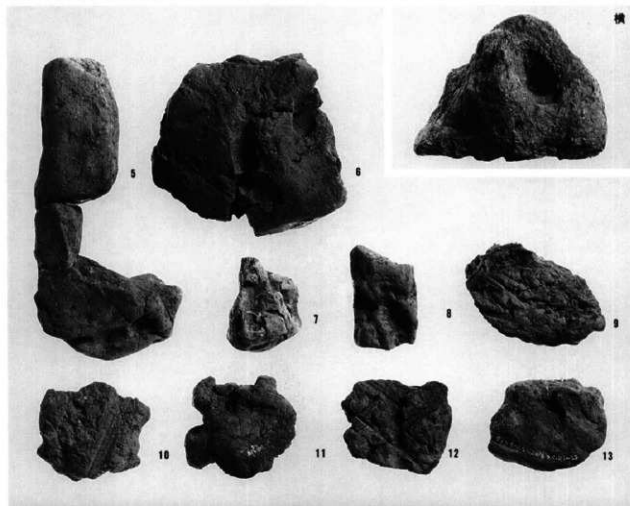


32

- 1 SD1007
- 2 SD2013(近世)
- 3 SD1016
- 4 SK2208



- 粘土塊・支脚
- 5 SD1016
 - 6 SQ2016
 - 7 SQ2016
 - 8 SQ2016
 - 9 SQ2016
 - 10 SQ2016
 - 11 ㊦-1区検出面
 - 12 SK2208
 - 13 SQ2016





1



2



3

1~4 羽口(1:3)

1 SD1016

2 SK2751

3 SQ2016

4 SK2744



4



5



6



7



8

5~17

羽口(1:2)

5 SD1016

6 SD1016

7 SD1016

8 SD1016

9 SD1016

10 SK1013

11 SD1016

12 SD1016

13 SD1016

14 SD1016

15 SK2832

16 SK2745

17 SD1016



9



10



11



12



15



13



14



16

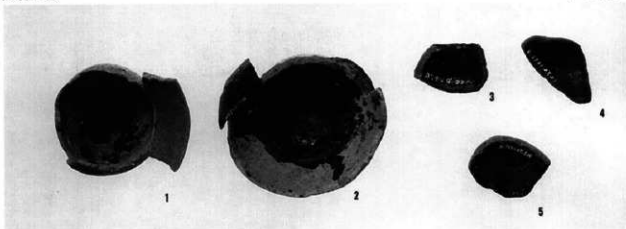


17

漆付着土器(1:2)

1~5

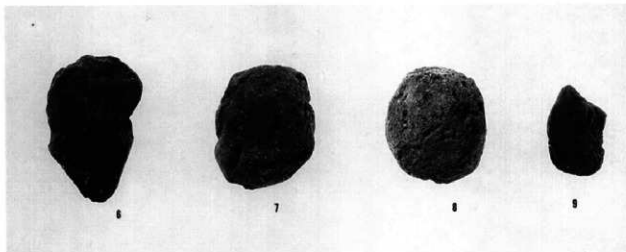
- 1 SK2291
- 2 SD1016
- 3 SK2294
- 4 SK2827
- 5 SD1016



軽石製品

6~9(1:2)

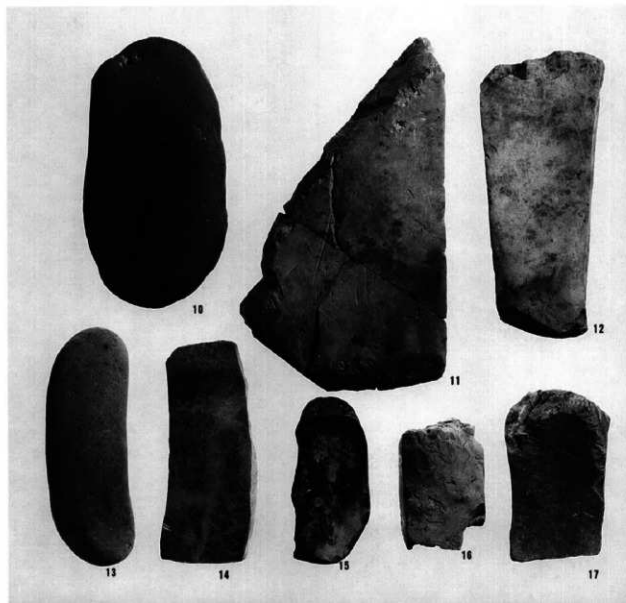
- 6 SK1025
- 7 SK1031
- 8 SK2101
- 9 SQ2016

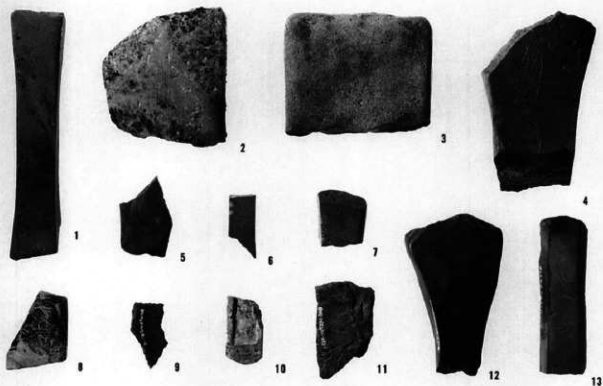


砥石

10~17(1:3)

- 10 SK2068
- 11 SK2154
- 12 SK2759
- 13 SQ1002
- 14 SQ2002
- 15 SD1016
- 16 SQ2016
- 17 SQ2017





砾石

1~13(1:2)

- 1 S K1023
- 2 S K1050
- 3 S D1016
- 4 S K2213
- 5 S K2377
- 6 S K2757
- 7 S D1007
- 8 S D1016
- 9 S D1016
- 10 S D1016
- 11 S Q2016
- 12 S D1016
- 13 S Q2017

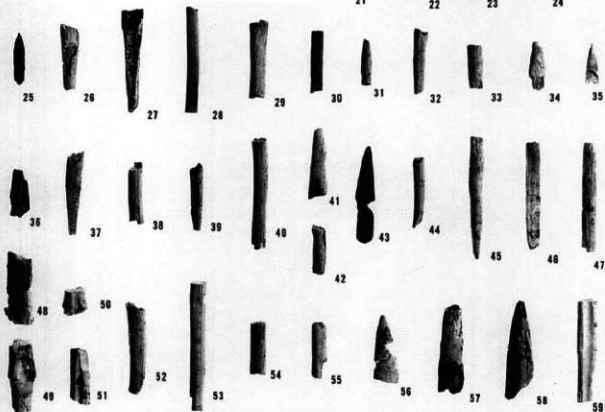


骨角器

14~17(1:2)

18~59(1:1)

- 14 S K2048
- 15 S Q2016
- 16 S D1016
- 17 S K2063B
- 18 S K2047
- 19 S K2744
- 20 S K2751
- 21 S K1033
- 22 S K2172
- 23~24 S K2747
- 25~29 S K2756
- 30 S K2757
- 31~33 S K2759
- 34~46 S K2827
- 48~56 S D1016
- 57 S D2018
- 58 S Q2016
- 59 S Q2007



勤長野県埋蔵文化財センター発掘報告書 26

中央自動車道長野線埋蔵文化財発掘調査報告書15

—長野市内その3—

石川桑里遺跡

第2分冊

発行 平成9年(1997)12月25日発行

発行者 日本道路公団名古屋建設局

長野県教育委員会

勤長野県埋蔵文化財センター

〒387 長野県更埴市屋代260-6

TEL 026-274-3891

FAX 026-274-3892

印刷 信毎書籍印刷株式会社

