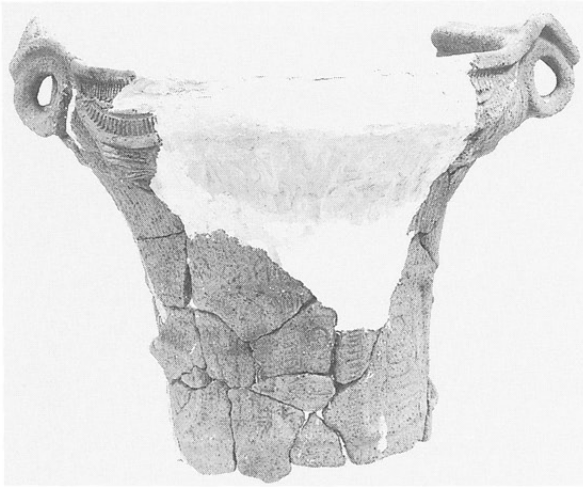


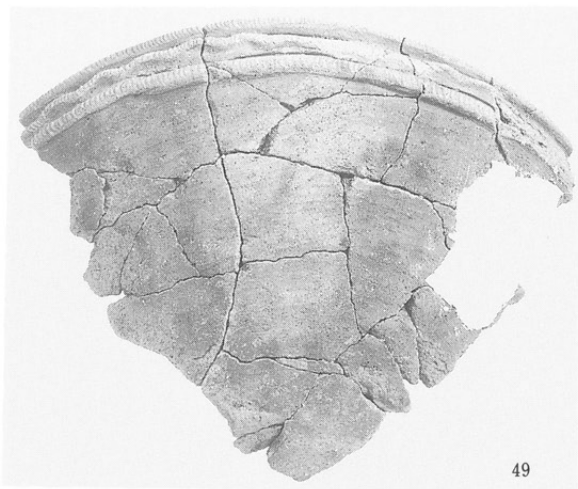
34



42







49



53

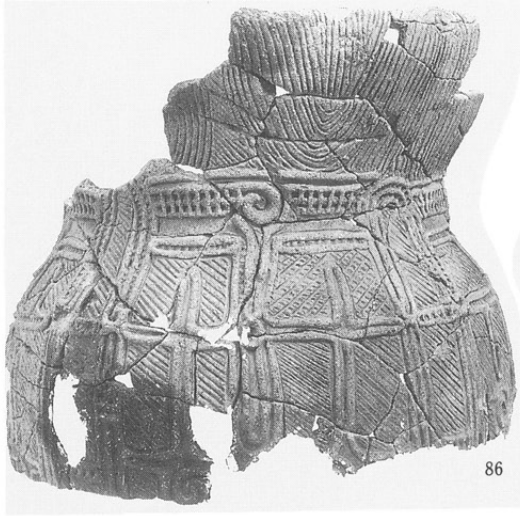


44

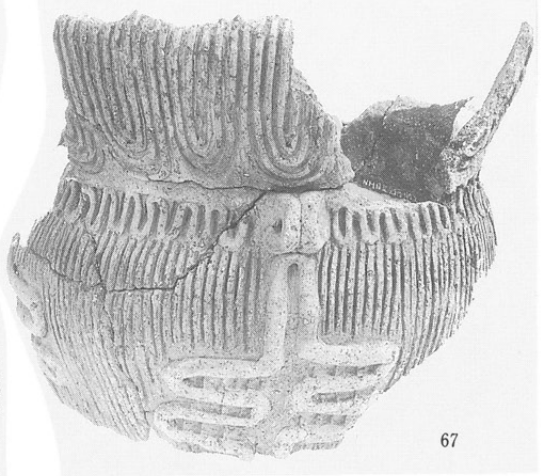


56

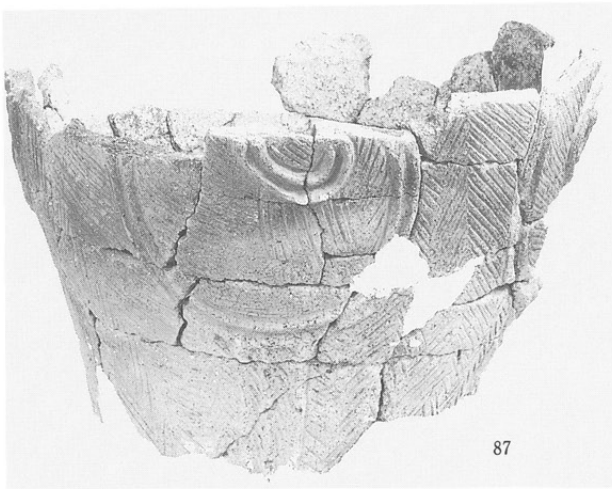




86



67

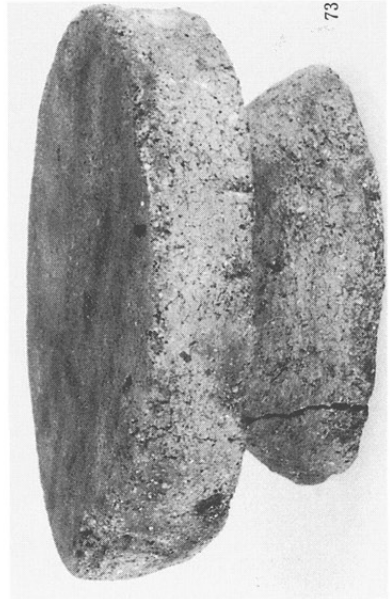
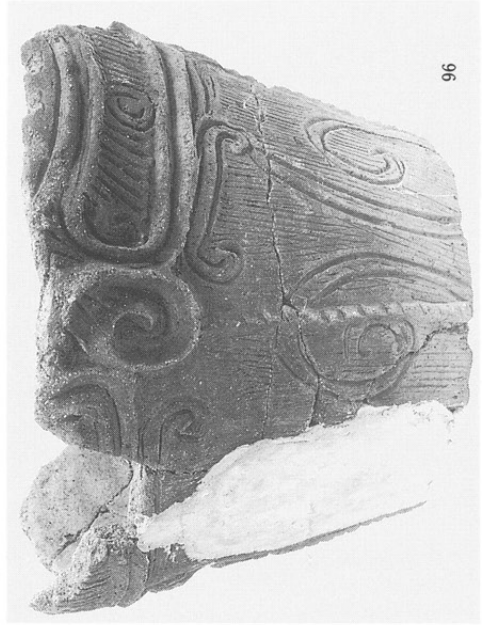
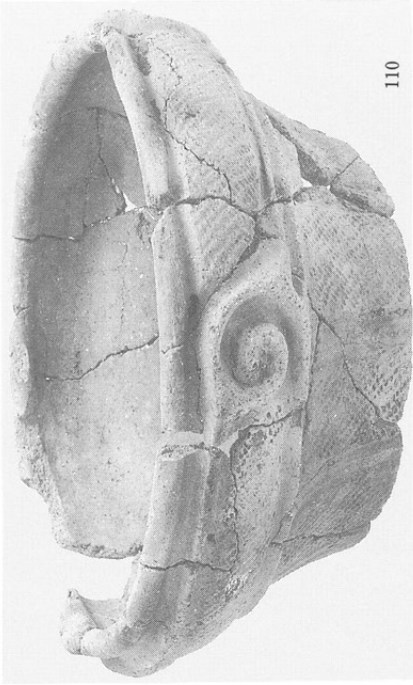


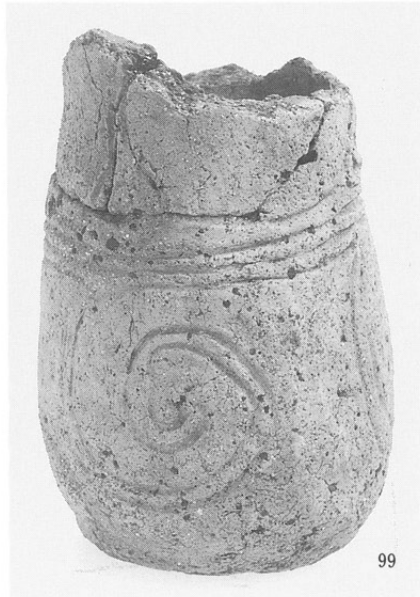
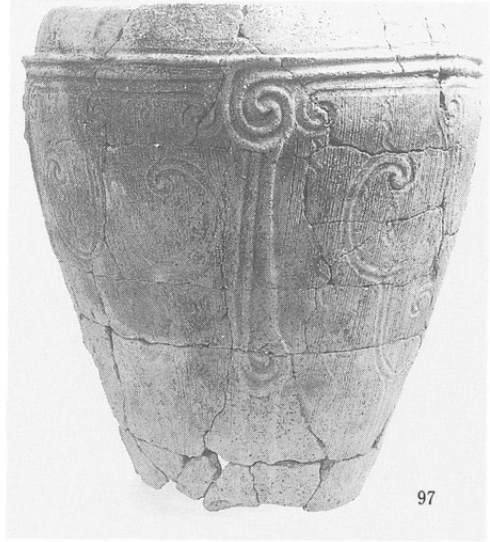
87

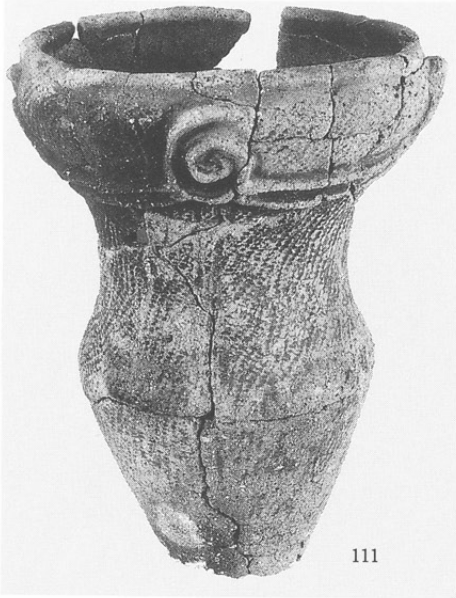


137









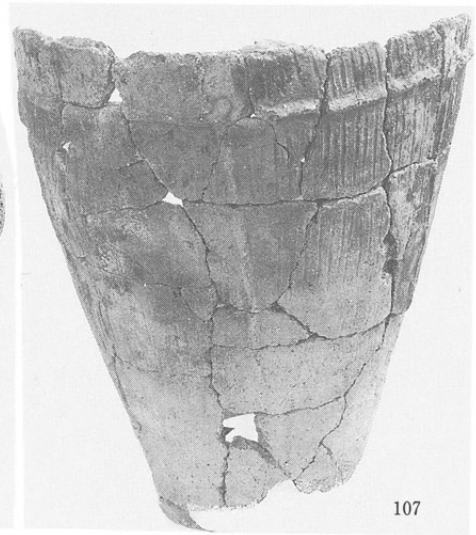
111



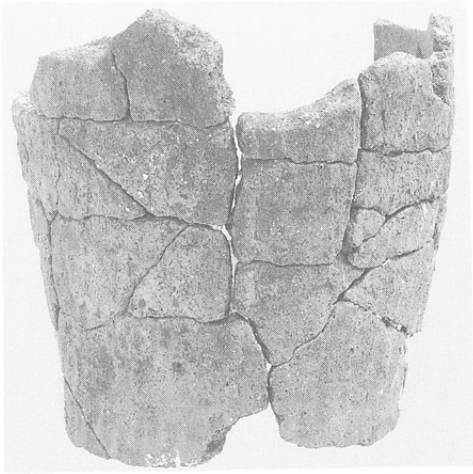
95



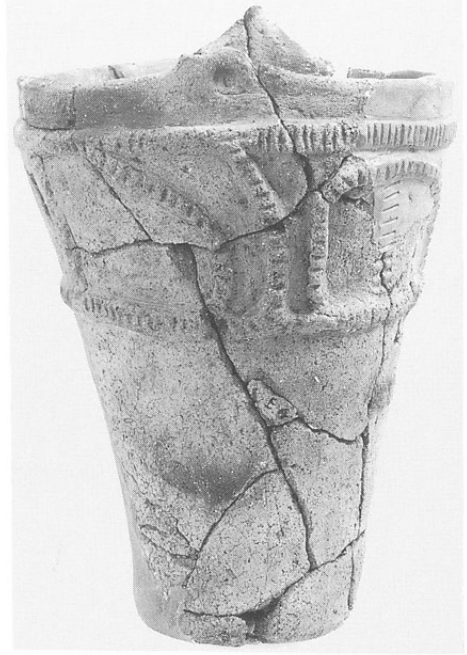
112



107



135



久保添出土土器



久保添出土土器



深沢出土土器



深沢 3 住土器



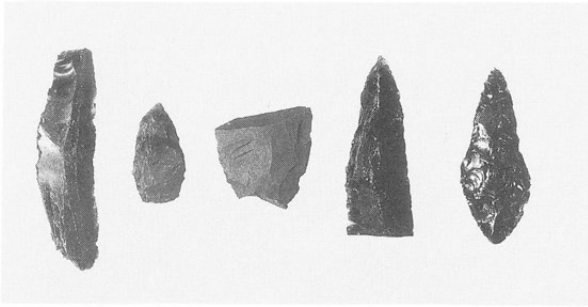
深沢 1 住埋甕



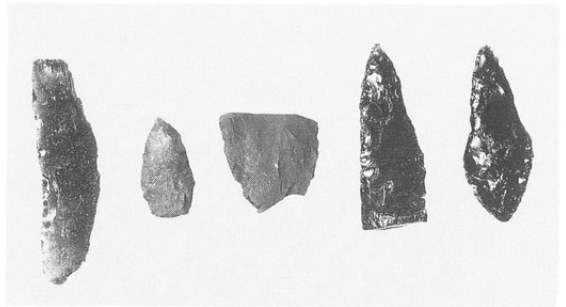
鉾塚四耳壺



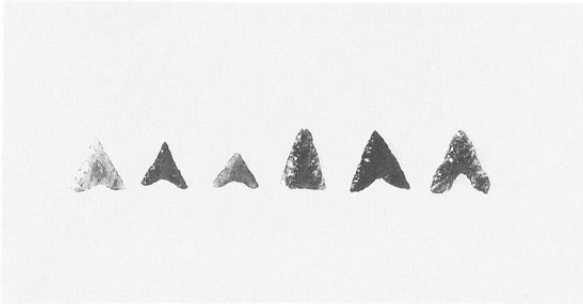
鉾塚陶器



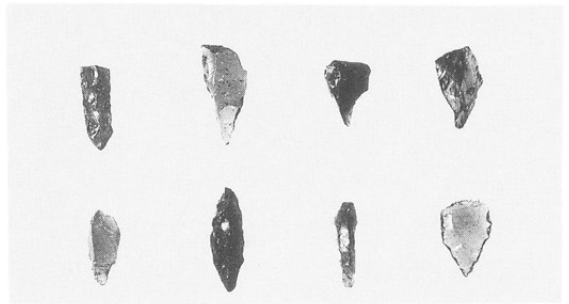
スクレイパー (98)、石槍 (1~4)



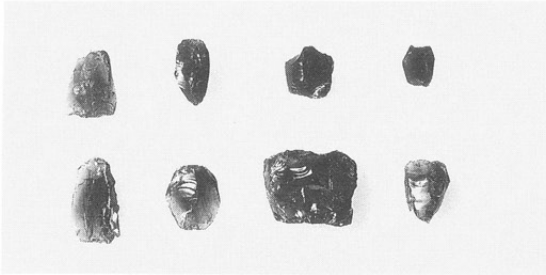
同 (裏面)



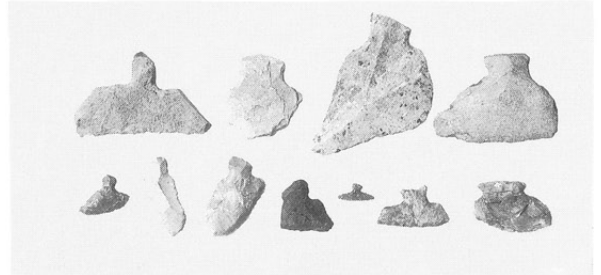
局部磨製石鏃 (13・14・17・44~46)



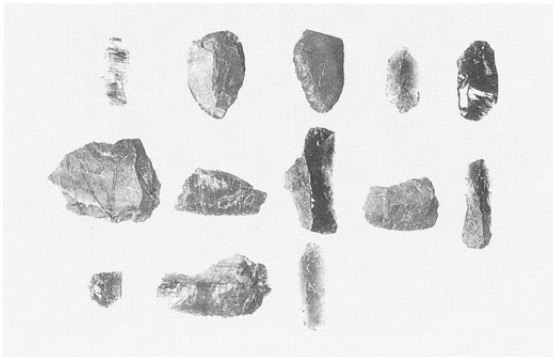
石鏃 (49・51~54・57・62・63)



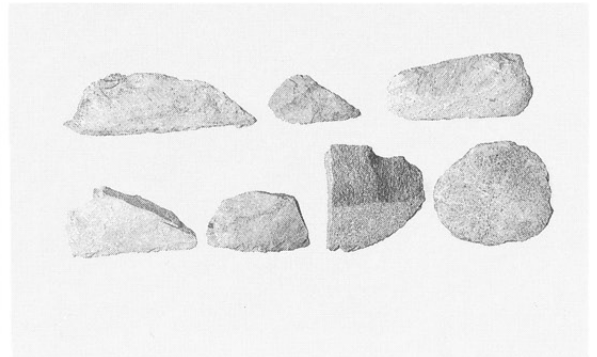
ピエス・エスキーユ (65~72)



石匙 (73~83)

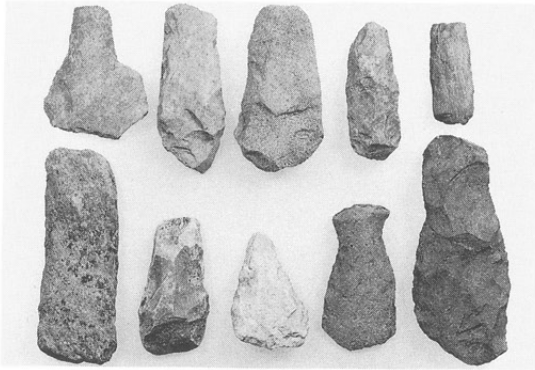


スクレイパー (89~91・93~97・99・100・102~104)

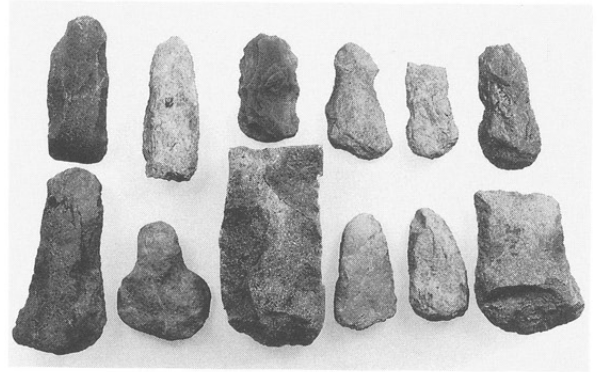


スクレイパー (84~88・92・101)

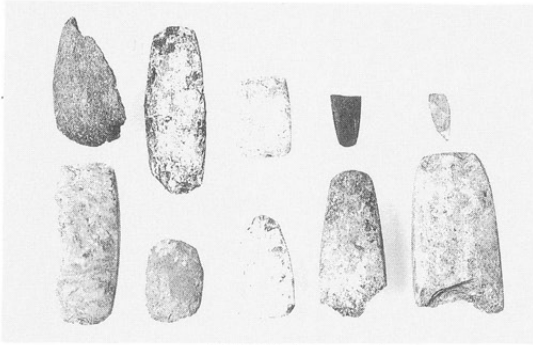




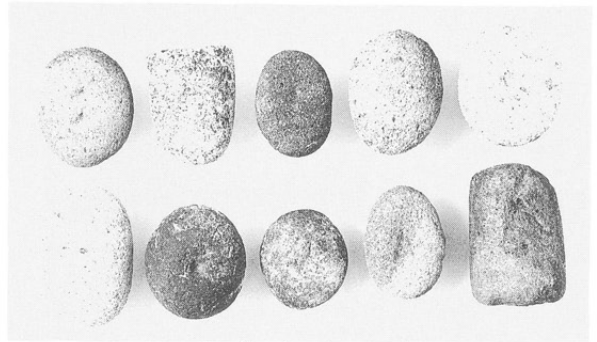
打製石斧 (105~113・115)



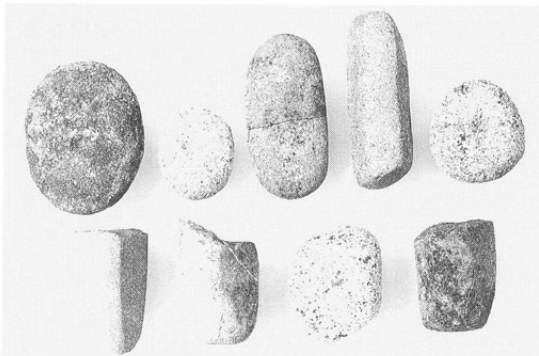
打製石斧 (114・116~126)



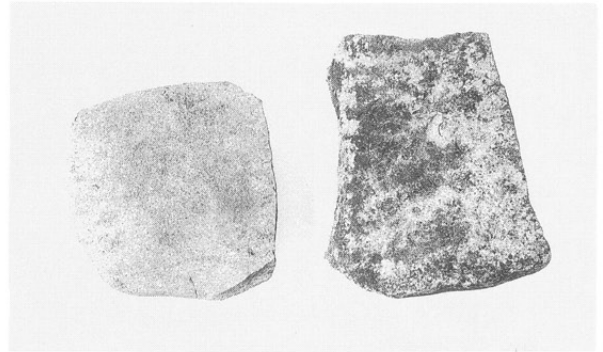
磨製石斧 (127~136)



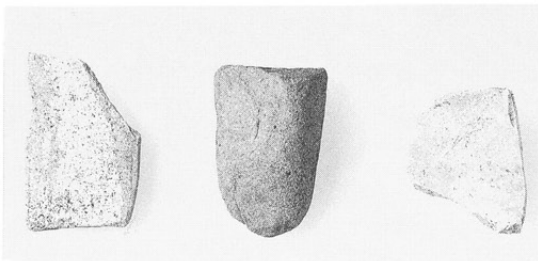
凹・敲・磨石 (137~146)



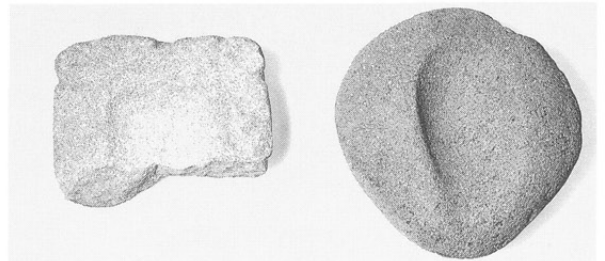
凹・敲・磨石 (147~155)



砥石 (右:160ほか)



砥石 (158・159・161)



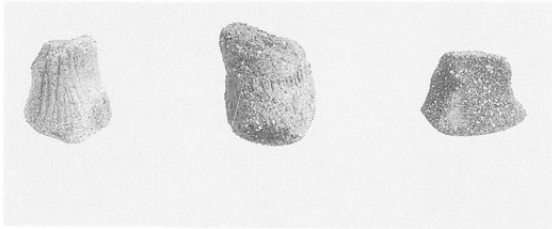
石皿 (156・157)



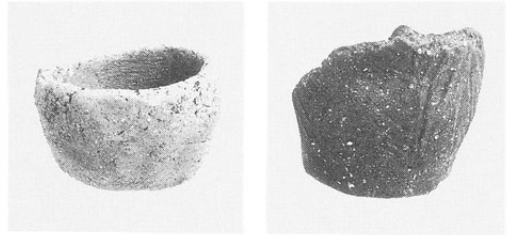
彫刻のある石皿 (156)



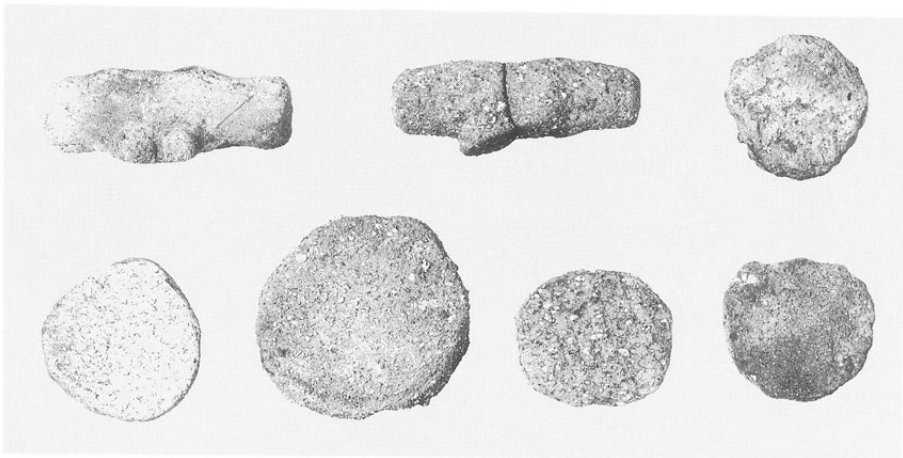
土偶 (3)



土偶 (1・5・6)



ミニチュア土器 (11・12)



土偶 (2・4)、土製円盤 (7~10ほか)



---

松本市文化財調査報告 No.90

## 松本市南中島遺跡

平成3年3月20日 印刷

平成3年3月20日 発行

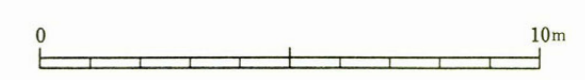
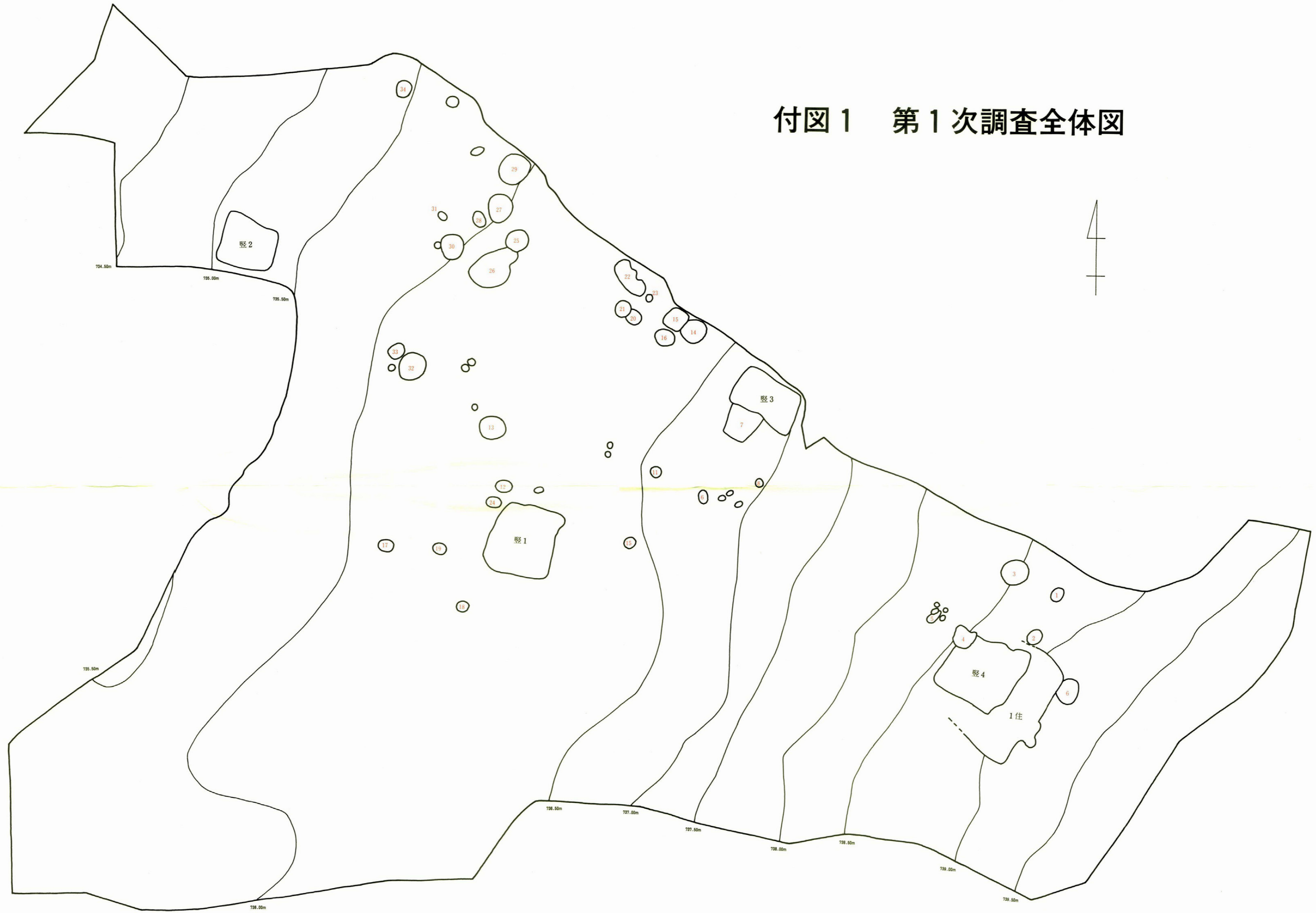
編集 松本市教育委員会  
〒390 長野県松本市丸の内3-7  
TEL 0263 (34) 3000

発行 松本市教育委員会

印刷 中信凸版印刷株式会社

---

付図1 第1次調査全体図



付図2 第2次調査全体図

