

第4次第3区の西壁



SA9(南より)



SA7(西より)



五輪塚とSA2・5の出土(西より)



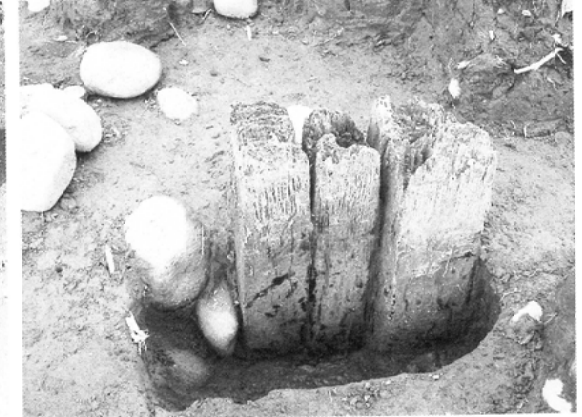
五輪塚の地藏尊



五輪塚とSK2



E A16



E A36



SA 6の出土状況



E A 12



E A 12



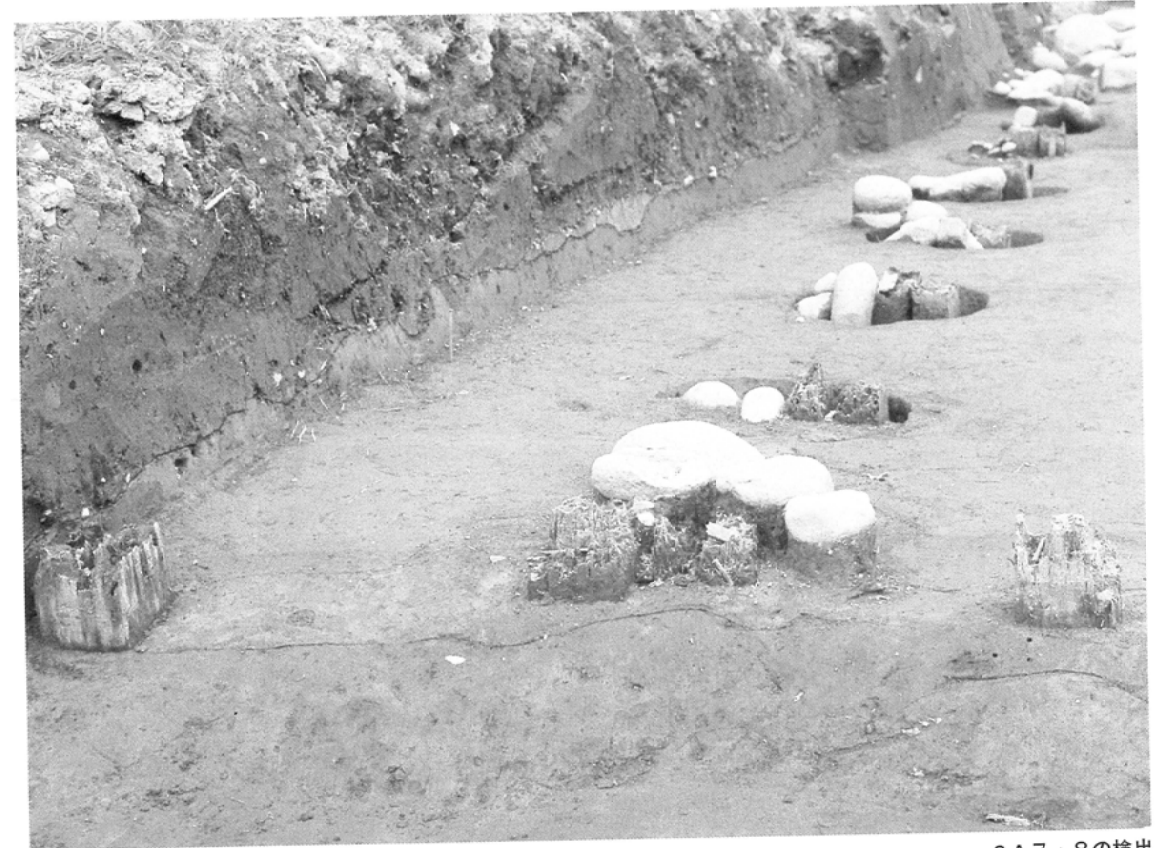
E A 14



E A 41



第4次第1・4区の遺構



SA 7・8の検出



EA 25



EA 15とEA 40



EA 21



EA 23



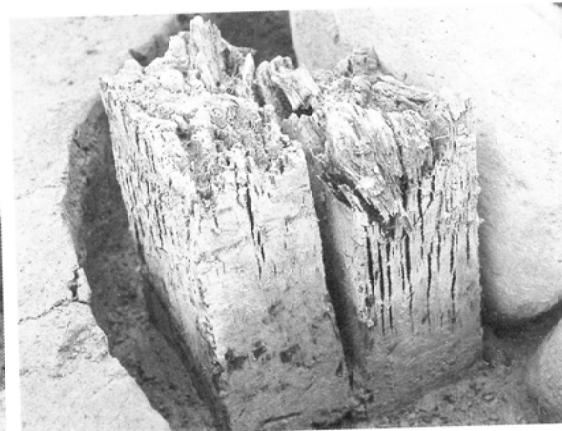
SA 8の完掘状況(北より)



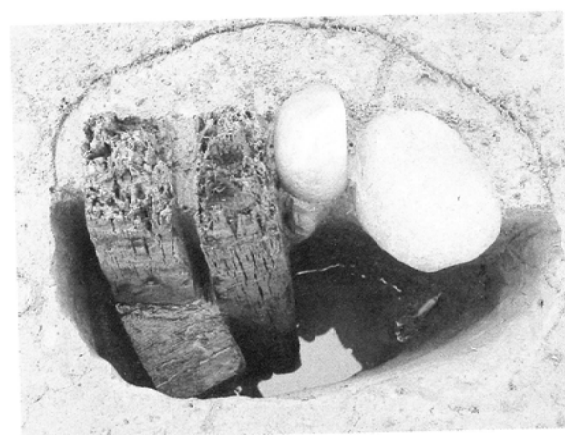
EA 16の完掘状況



EA 23



EA 22



EA 21



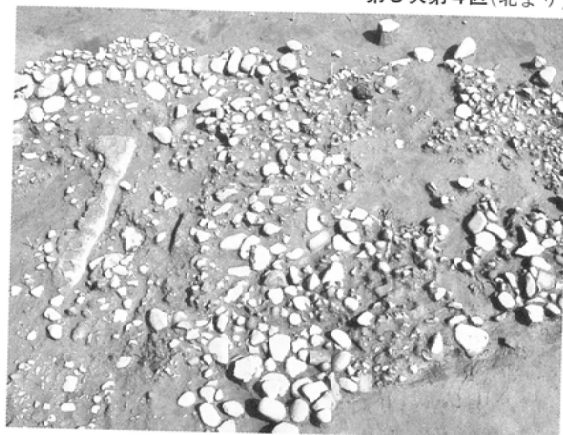
EA 25



第3次第4区(北より)



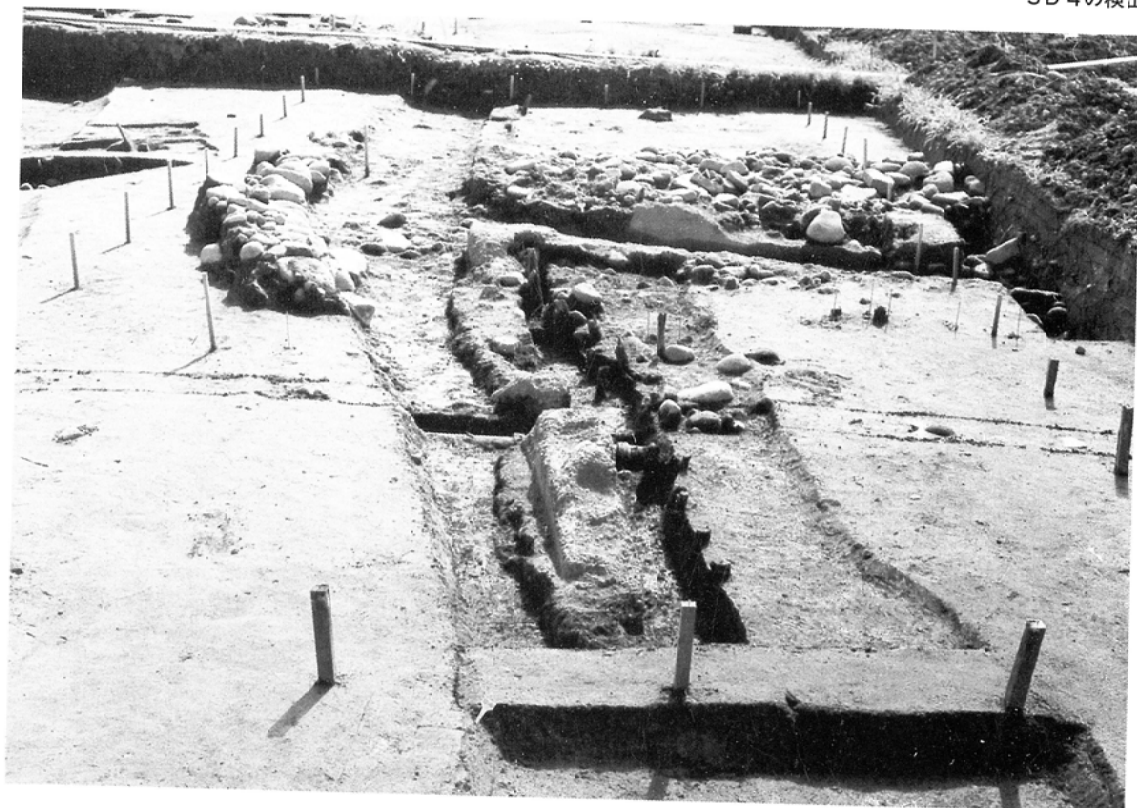
第3次第3区(南より)



第3次第3区(南より)



SD4の検出



SD4の完掘状況(西より)



第4次第4・3区(南西より)



旧農道とSD5



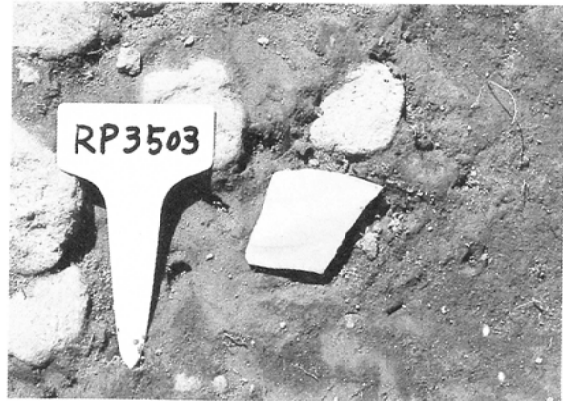
SD6・9(南より)



SK1



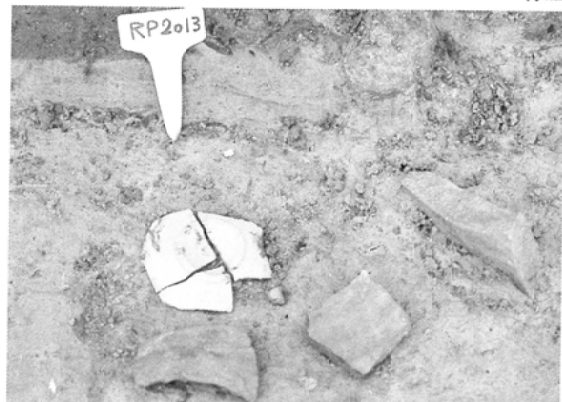
SA4の打ち込み杭列



青磁



青磁



陶器



かわらけ



櫛目波状文壺



叩き壺



叩き壺



鉢の叩し目



漆器



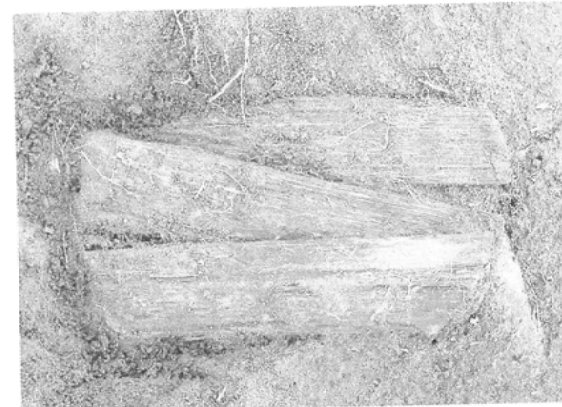
漆器



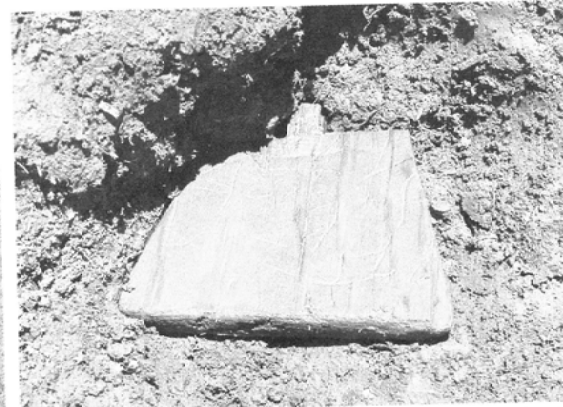
曲物底板



曲物底板



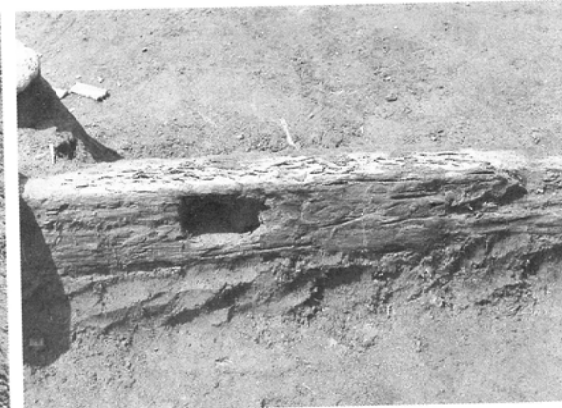
曲物底板



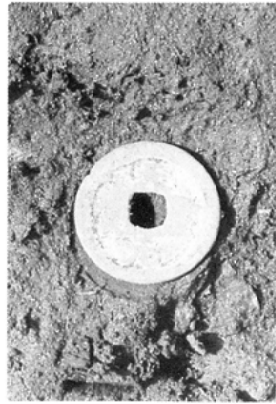
差歯下駄の歯



板



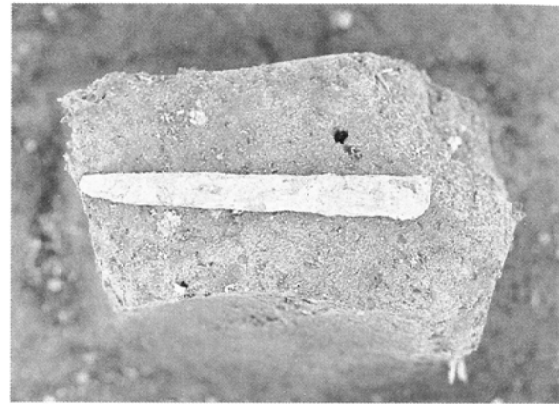
柱



古銭



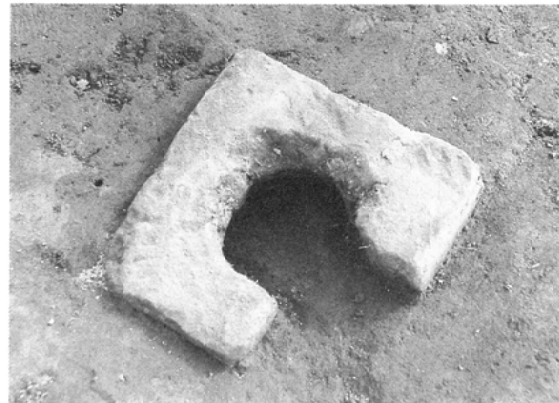
古銭



刀子



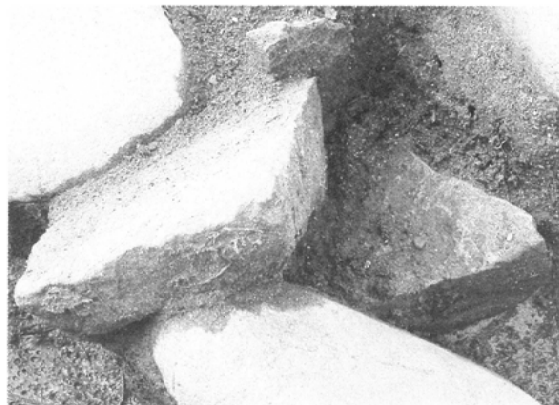
石製品



石製品



石製品と木製品



石製品



染付



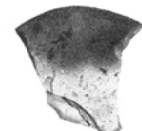
煙管



21-1



21-2



21-3



21-4



21-5



21-6



21-7



21-8



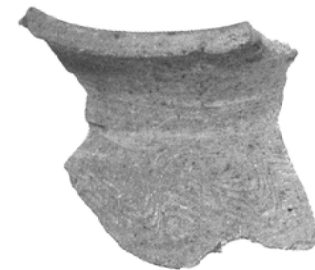
21-9



21-10



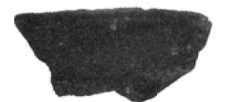
21-11



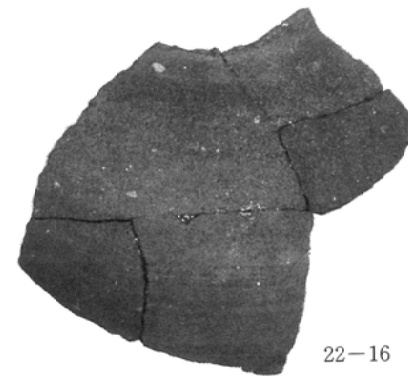
22-12



21-14



22-13



22-16 かわらけ・陶器



22-17



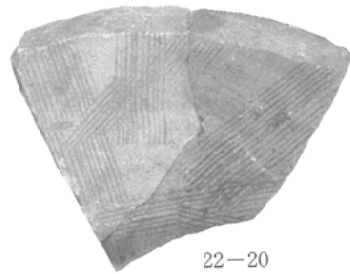
22-15



22-18



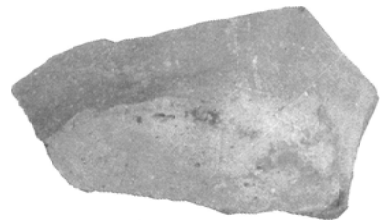
22-19



22-20



23-21



23-22



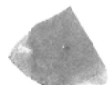
23-23



23-24



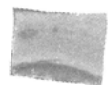
23-25



23-26



23-27



23-28

陶器·青磁



25-1



25-2



25-3



25-4



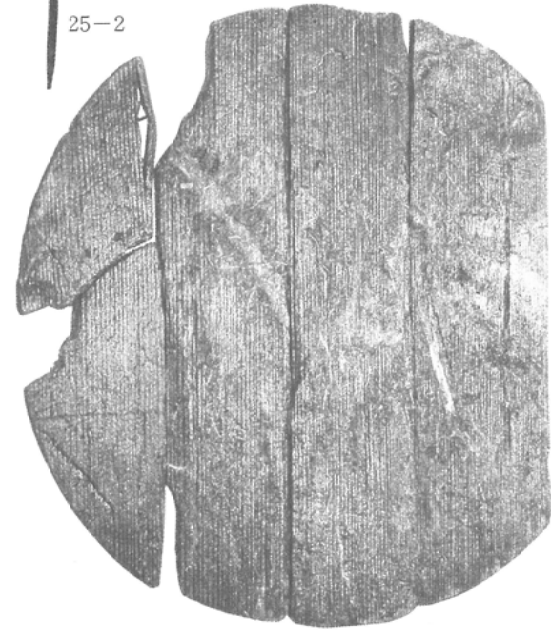
25-5



25-6



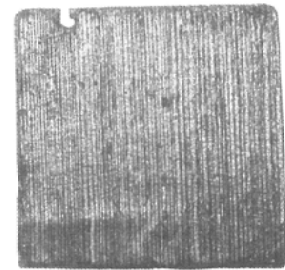
25-9



25-7·8



25-11



26-18



26-20



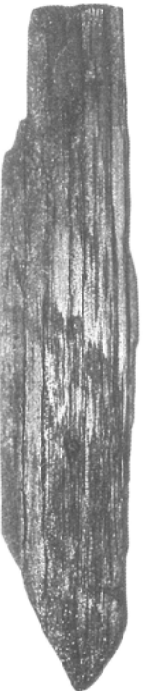
26-13



26-14



26-17



26-15



26-19



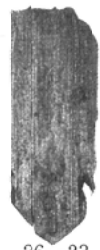
26-16



26-21

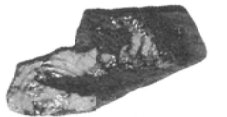


26-22

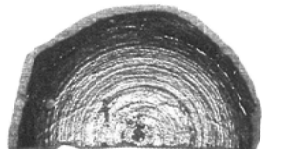


26-23

木製品



29-40



29-41



26-12



27-25



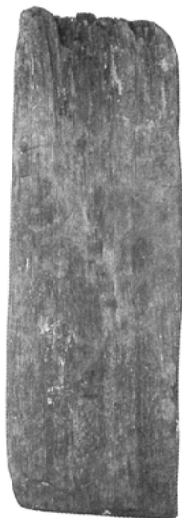
27-27



27-29



27-30



28-33



28-37



28-38



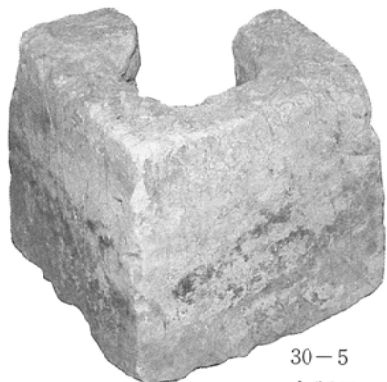
30-1



30-2



30-3



30-5



30-4

木製品・石製品

大楯遺跡第3・4次発掘調査報告書

平成3年3月25日印刷
平成3年3月30日発行

発行者 遊佐町教育委員会
山形県飽海郡遊佐町大字遊佐町字舞鶴211
TEL 0234 (72) 3 3 1 1 (代)
印刷所 株式会社油長印刷所
酒田市日吉町二丁目3の31

