



SH18-356



SH18-358



SH18-359



SH18-360



SH18-363



SK23-367



SH5-369



SH5-368



SH5-370



SH5-372



SH5-373



SH5-371



SH5-378



SH5-377



SH5-379



SH5-374



SH5-375



SH5-376



SH5-381



SH5-380



SK72-385



SH5



SK72-386 A面



SK72-386 B面



SK5-389



SK32-390



SK32-390



SK32



SK32-395



SK32-392



SK32-394



SK32-394



SK32-396



SK32-397



SK32-398



SK32-399

写真図版 72



SK123-401

SK123-402



SK20-402



SH7-405



SH7-406



SH7-410



SH7-407



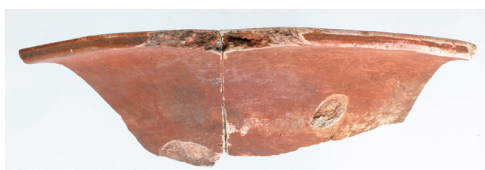
SH7-408



SH7



SH7-411



SH7-412



SH7-409



SH7-416



SH7-414



SH7-415



SH7-418



SH7-417



SH7-419



SH7-420



SH7-423



SK103-425



SK103-424



SH8-427



SH8-428



SH8-429



SH8-430



SH8-431



SH8-432



SH8-434



SK68-435



SK68-436



SK47-439



SK48-445



SK48-446



SK47-442



SH31-448



SH31-447



SH31-449



SH31-450



SH31-452



SH31-451



SH31-457



SH31-453



SH31-453



SH31-453



SH31-454





SK49-455



SH31-456



SH31-458



460

469

SH31  
169图



SK95-473



SK95-472



SK95-474



SH14-480



SK95-475



SH14-481



SH14-477



SH14-479



SH14-483



SH14-484



SH14-485



SH14-486



SH14-489



SH14-488



SH14-487



SH14-490



SH14-491



SH14-492



SH14-493 A面



SH14-493 B面



SH24-495  
※黑色磨研



SH14-494 A面



SH14-494 B面



SH24-497



SH24-498



SH24-496



SH24-500



SH24-504



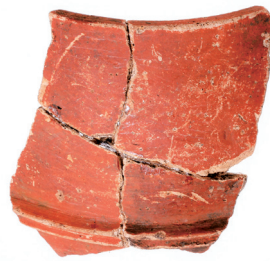
SH24-501



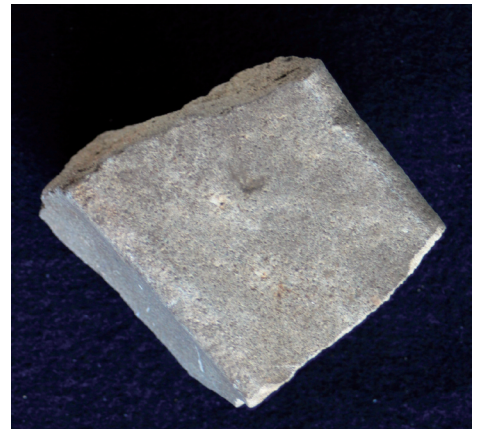
SH24-502



SH24-499



SH24-503



SH24-509



SH24-506 A面



SH24-506 B面



SH24-508



SH24-507



SH24-507



SH24-510



SK67-514



SK67-511



SK67-513



SK67-513



SK67-515



※旧石器

SK67-516



SK1-517



SK13-520



SK13-522



SK13-521



SH1-523



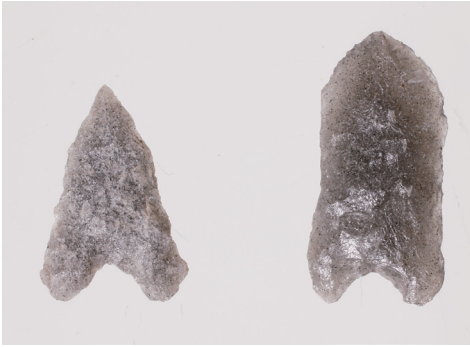
SH2-529



SH2-527



SH2-528



SH2-538

SH2-537



SH2-536



SH2-534



SH2-535



SK9-541



SK9-539



SK9-540



SK94-548





SK7-549



SH9-551



SH9-550



SH9-552



SH9-553



SH9-554



SK10-556



SK10-556



SK10-557



SK10-559



SK10-558



SK10-563



SK10-561  
※558と同一個体



SK10-562



SK10-562



SK10



SK10-564



SK10-564