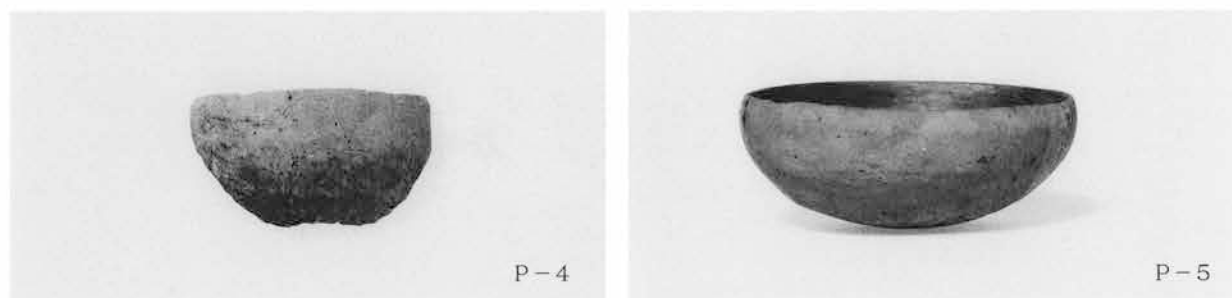


105号住居跡出土遺物 (2)

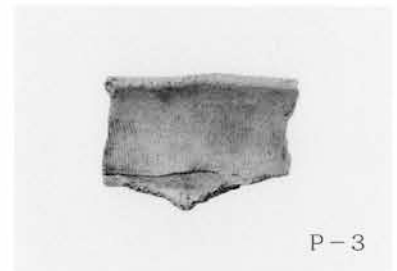


106号住居跡出土遺物

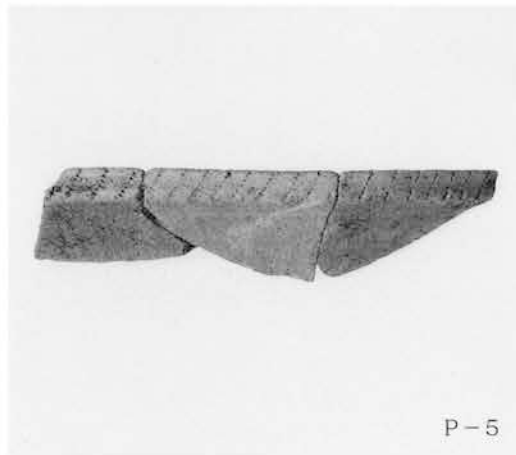


107号住居跡出土遺物 (1)

图版124



107号住居跡出土遺物 (2)



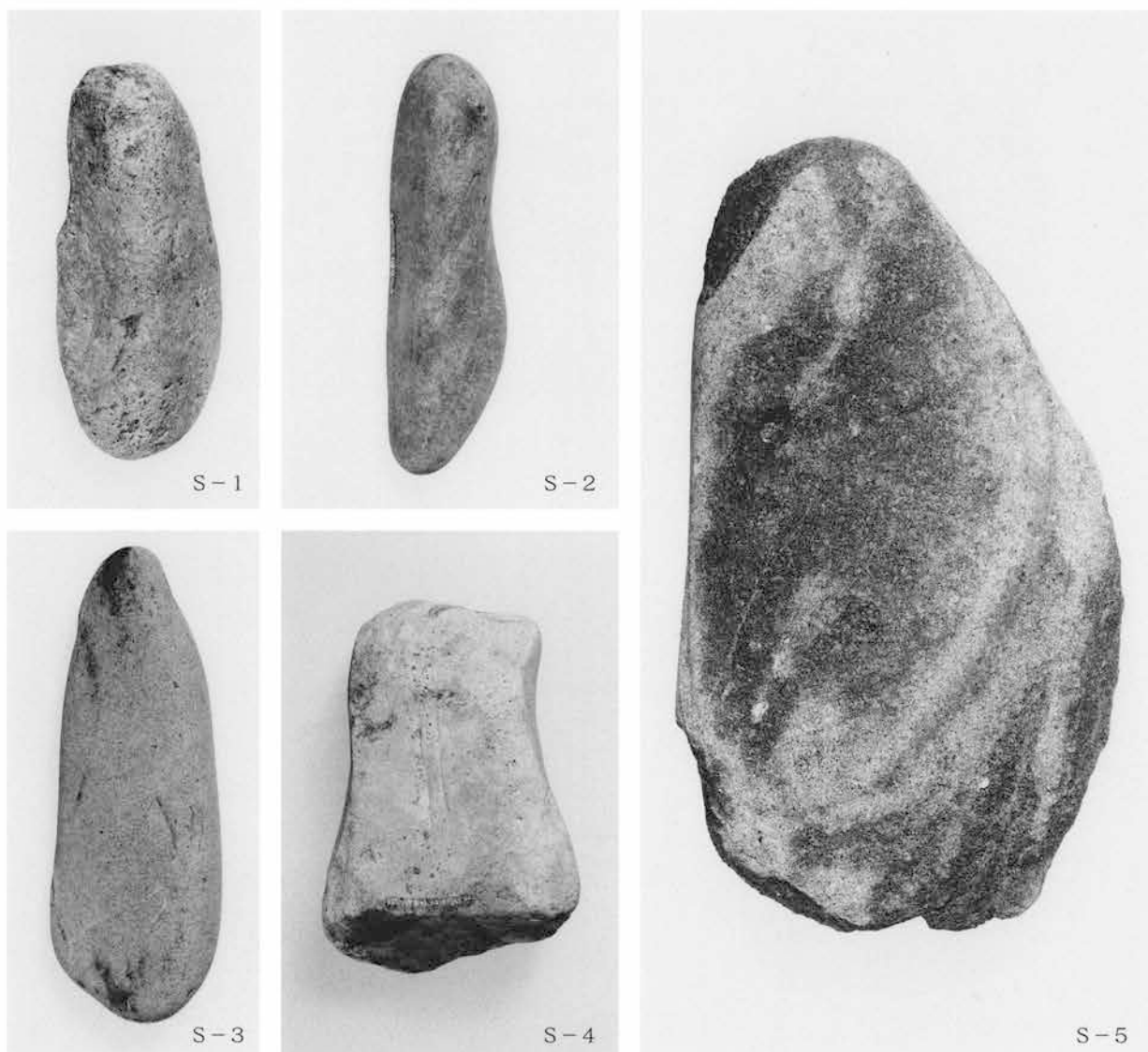
108号住居跡出土遺物



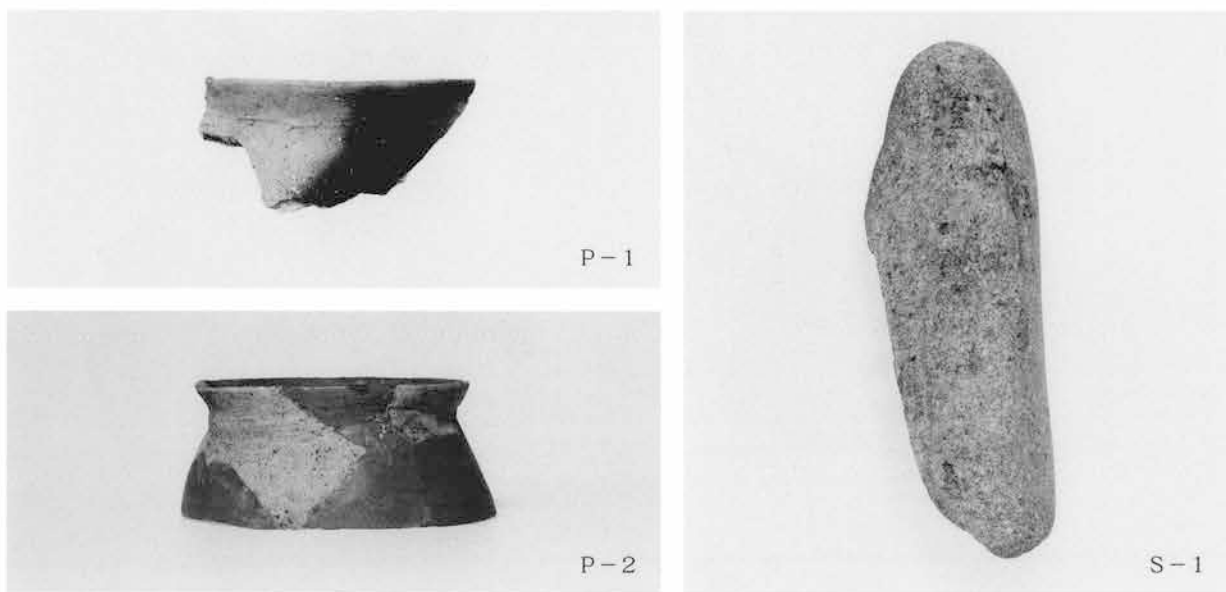
110号住居跡出土遺物 (1)



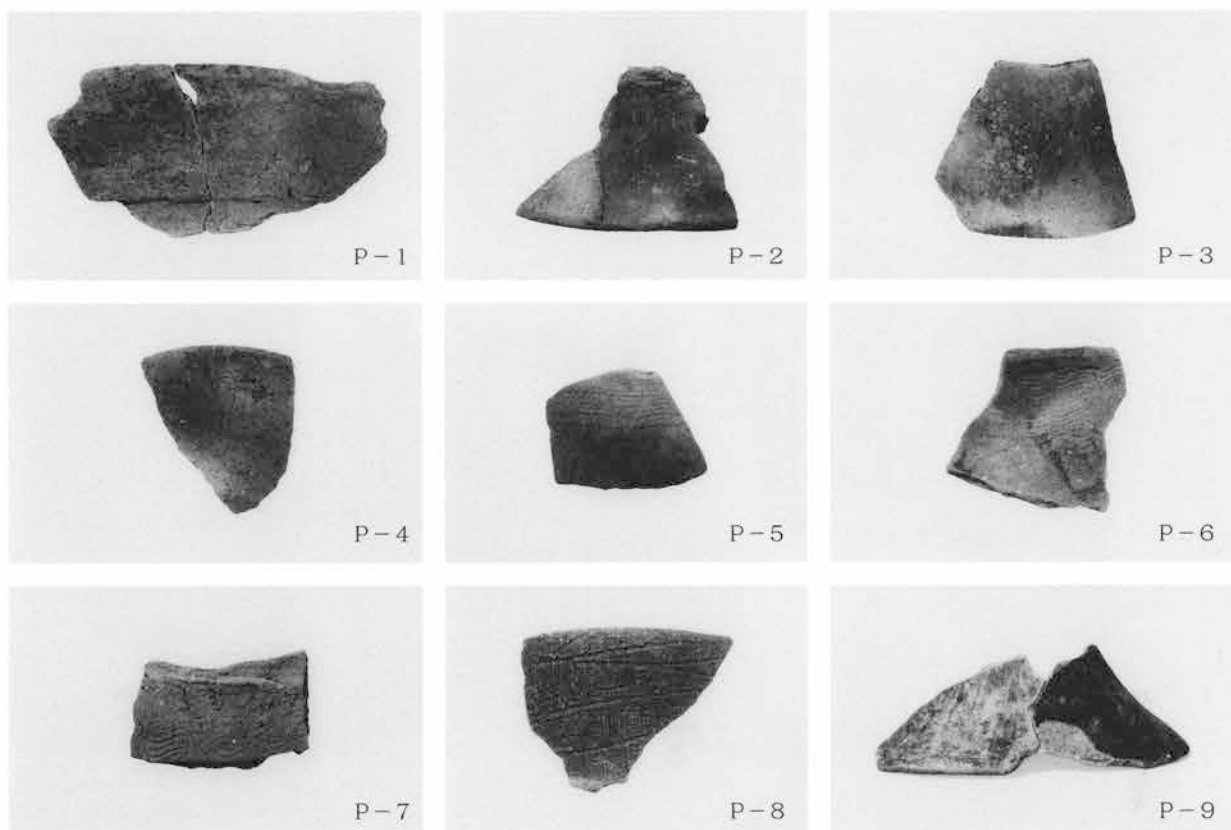
110号住居跡出土遺物(2)



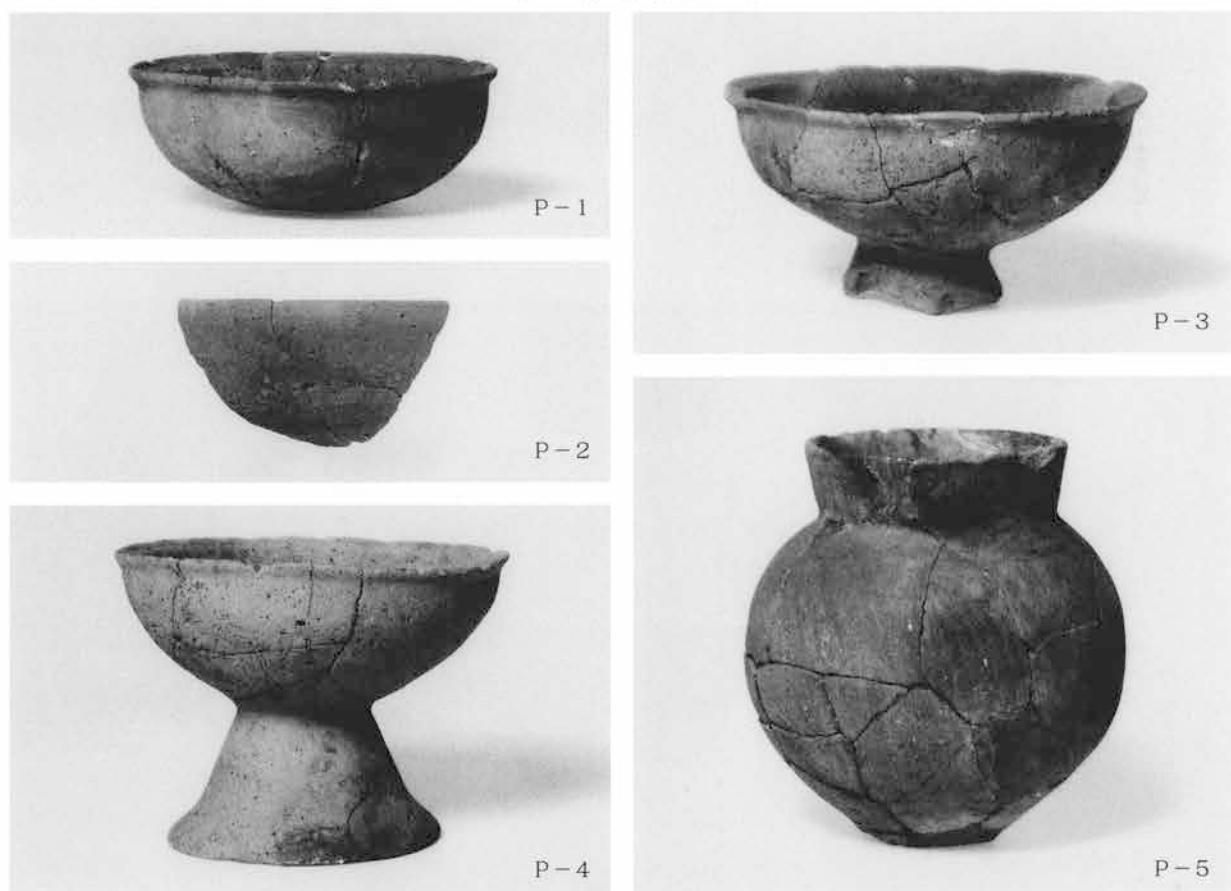
110号住居跡出土遺物 (3)



115号住居跡出土遺物



18区2号住居跡出土遺物

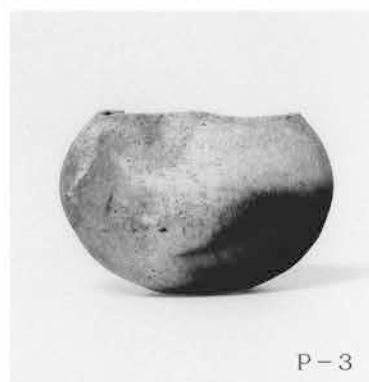


18区4号住居跡出土遺物 (1)



18区4号住居跡出土遺物 (2)

18区5号住居跡出土遺物



8号井戸出土遺物(1)

图版130







20号井戸出土遺物

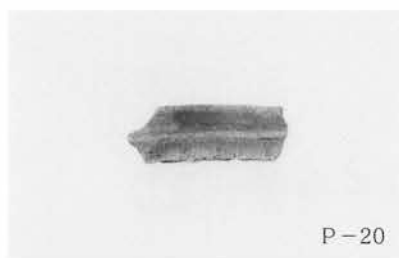
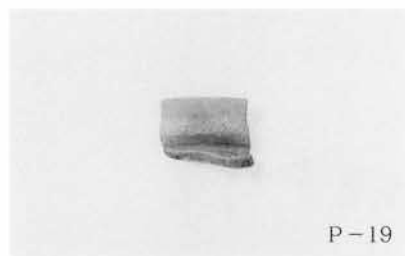


22号井戸出土遺物



24号井戸出土遺物 (1)

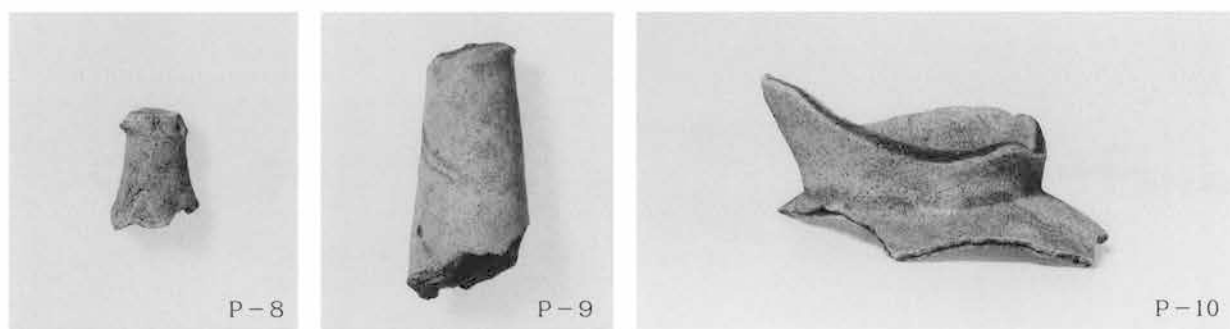
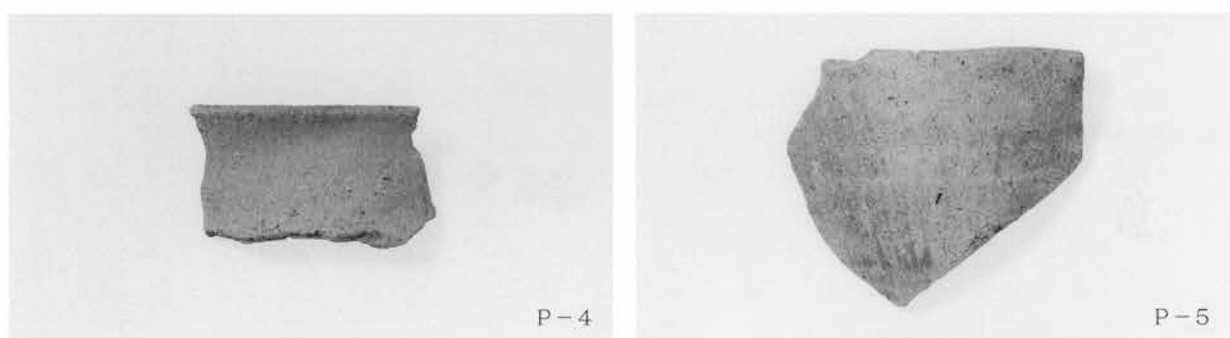
図版132



24号井戸出土遺物 (2)

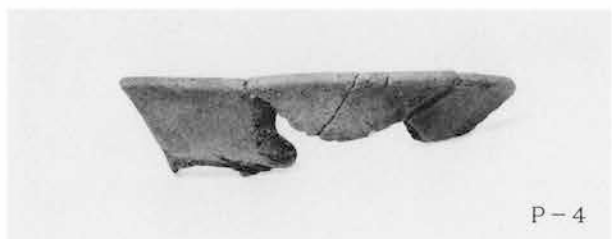


24号井戸出土遺物 (3)

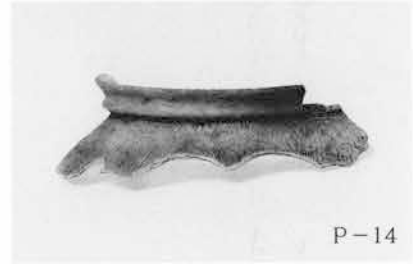
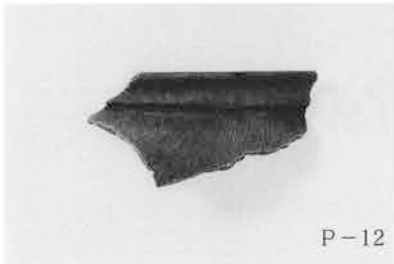


26号井戸出土遺物

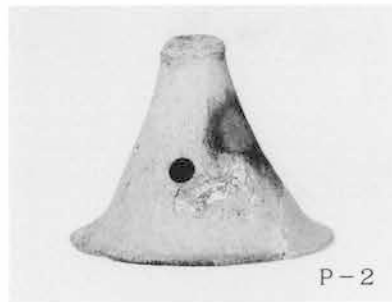
图版134



27号井戸出土遺物 (1)



27号井戸出土遺物 (2)

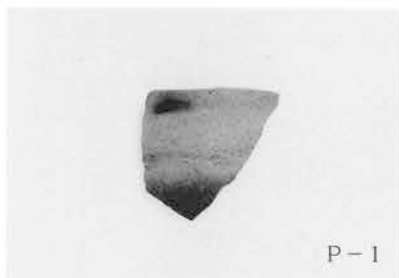


28号井戸出土遺物



30号井戸出土遺物

図版136



31号井戸出土遺物

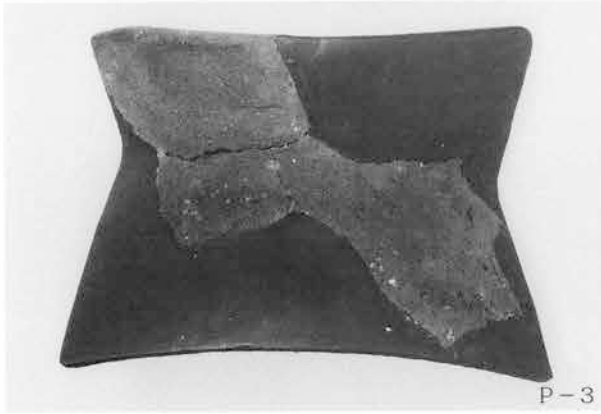


32号井戸出土遺物



34号井戸出土遺物

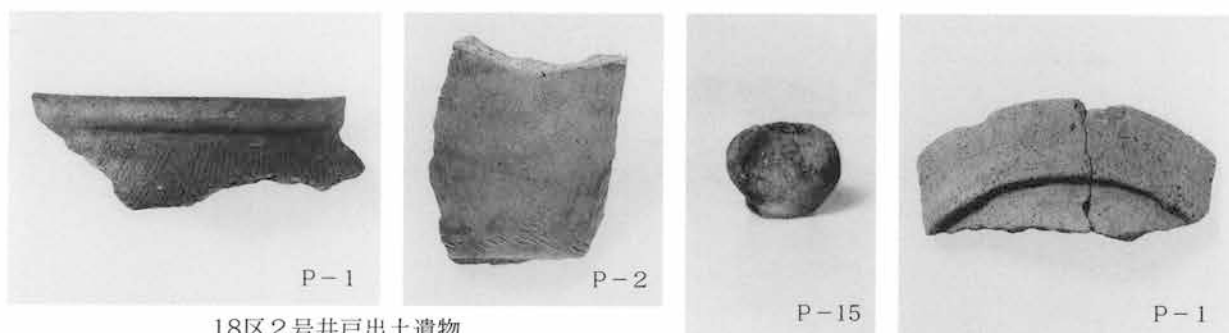
36号井戸出土遺物



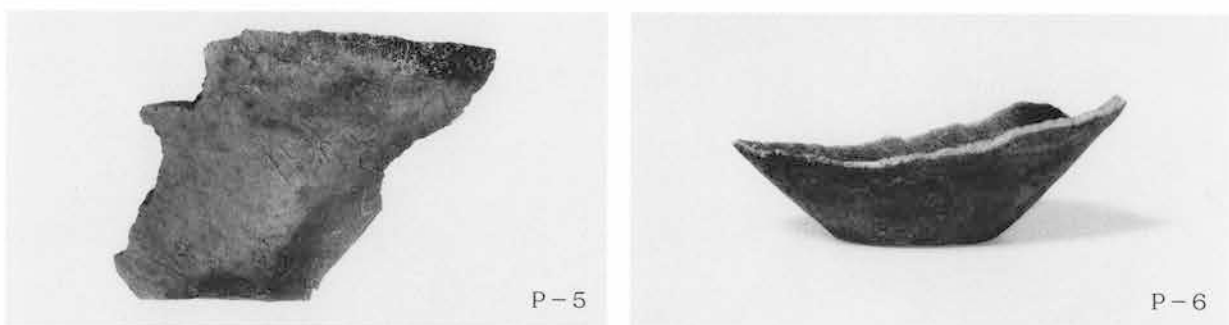
37号井戸出土遺物

38号井戸出土遺物

图版138

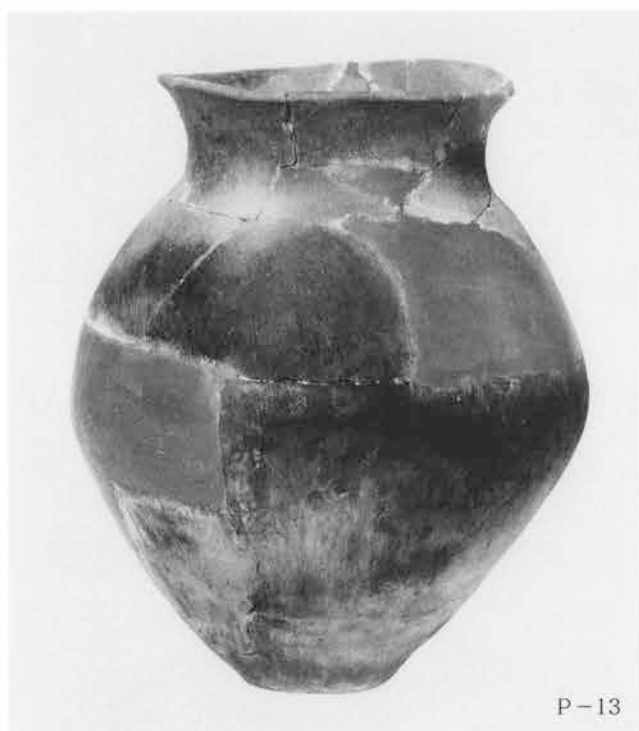


18区2号井戸出土遺物

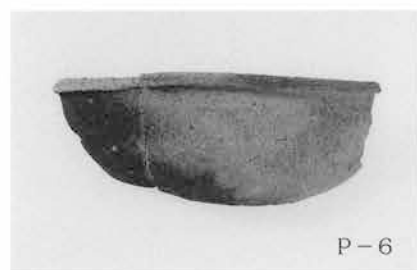
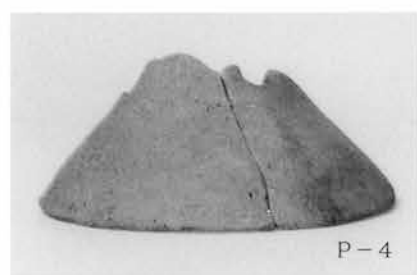


18区4号井戸出土遺物 (1)





18区4号井戸出土遺物 (2)



18区5号井戸出土遺物 (1)

图版140

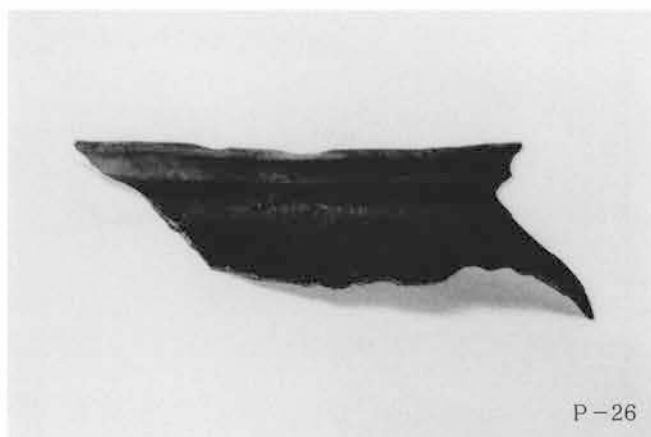


18区5号井戸出土遺物 (2)



18区5号井戸出土遺物 (3)

图版142



18区5号井戸出土遺物(4)



P-1

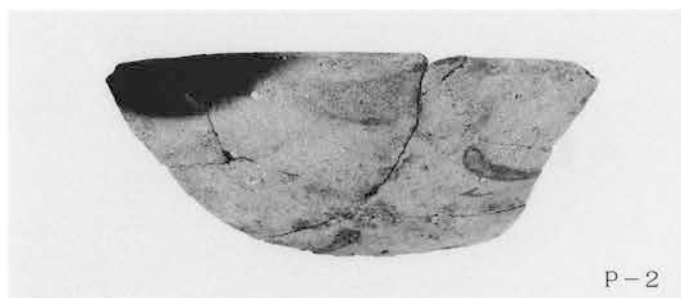
1号土坑出土遺物



P-1



P-3



P-2



P-4



P-5



P-6



P-7



P-8

4号土坑出土遺物



P-1



P-2



P-3

5号土坑出土遺物 (1)

图版144



5号土坑出土遺物(2)



5号土坑出土遺物(3)







5号土坑出土遗物(5)



5号土坑出土遺物(6)



7号土坑出土遺物(1)



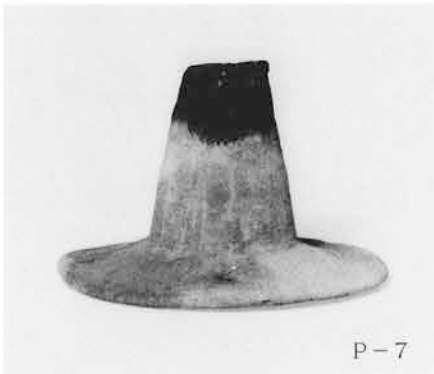
P-4



P-5



P-6



P-7



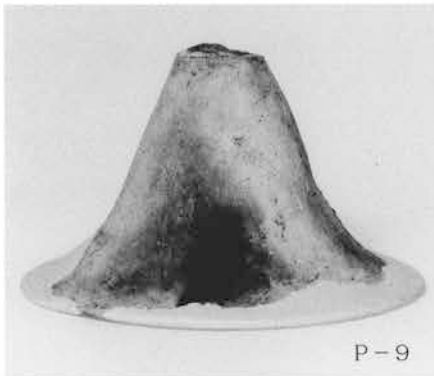
P-8



P-11



P-12



P-9



P-10



S-1

7号土坑出土遺物 (2)



P-1



P-2



P-3

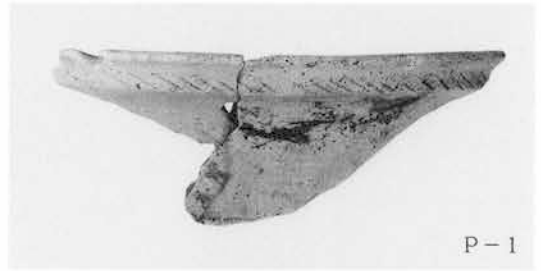
11号土坑出土遺物

图版150



P-1

12号土坑出土遗物



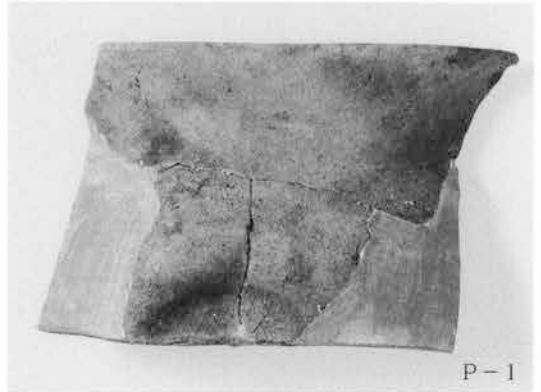
P-1

16号土坑出土遗物



P-1

15号土坑出土遗物



P-1

14号土坑出土遗物



P-1



P-2



P-3



P-4



P-5

37号土坑出土遗物 (1)



37号土坑出土遺物 (2)



38号土坑出土遺物

图版152



P-1

48号土坑出土遗物



S-1

59号土坑出土遗物



P-1



P-2



P-3



P-4



P-5

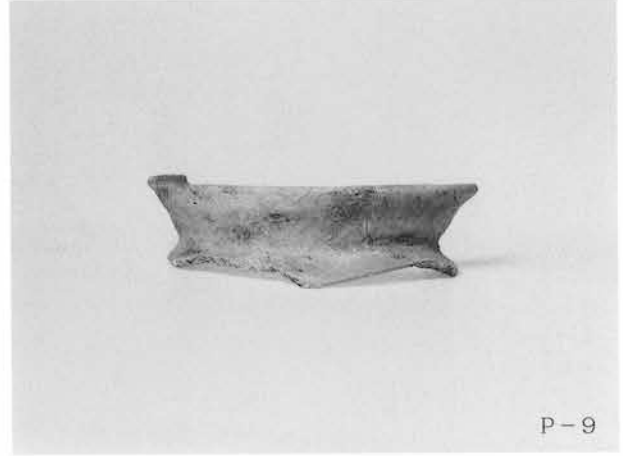


P-6



P-7

63号土坑出土遗物 (1)



63号土坑出土遗物 (2)

图版154



P-14



P-15



P-16



P-17



P-18

63号土坑出土遺物 (3)



P-1



P-2

85号土坑出土遺物





P-1

86号土坑出土遺物



P-1

108号土坑出土遺物



P-1

113号土坑出土遺物



P-1

115号土坑出土遺物



P-1

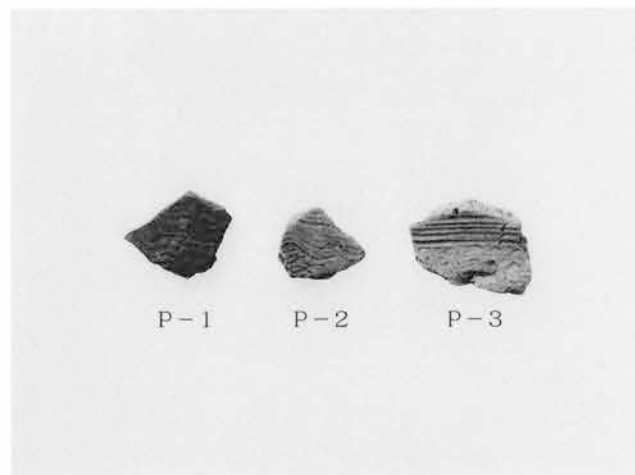


P-2



P-3

109号土坑出土遺物



P-1

P-2

P-3

117号土坑出土遺物

图版156



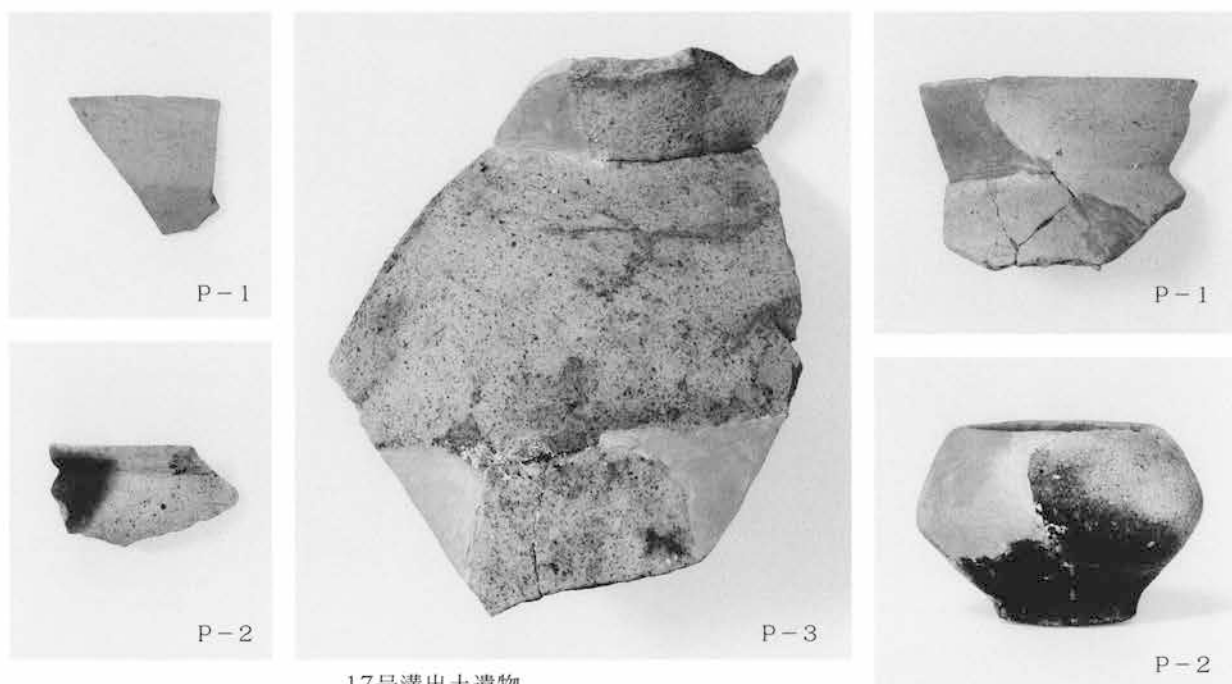
18区33号土坑出土遗物



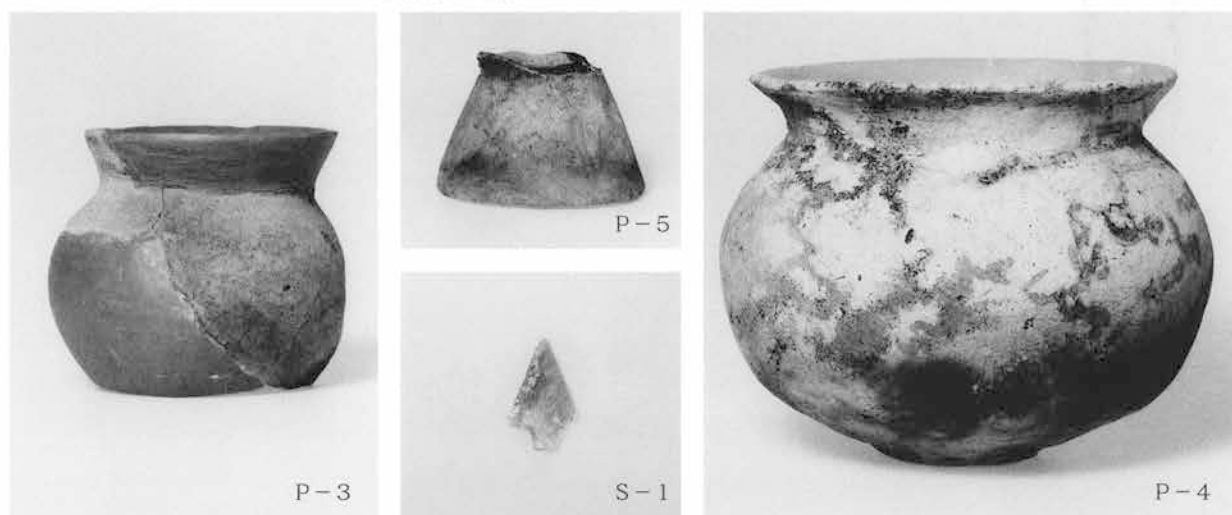
18区44号土坑出土遗物



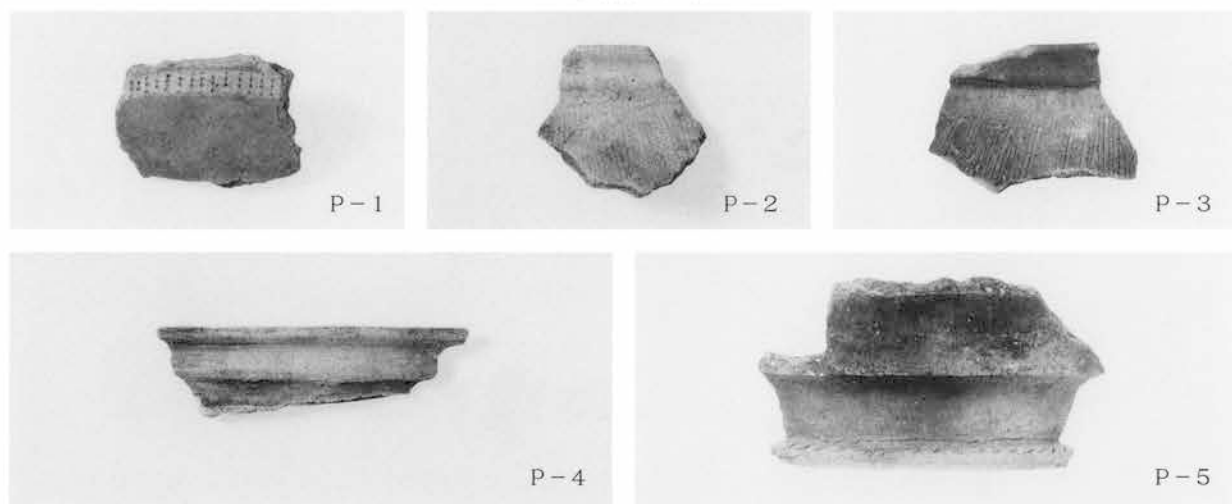
18区35号土坑出土遗物



17号沟出土遺物



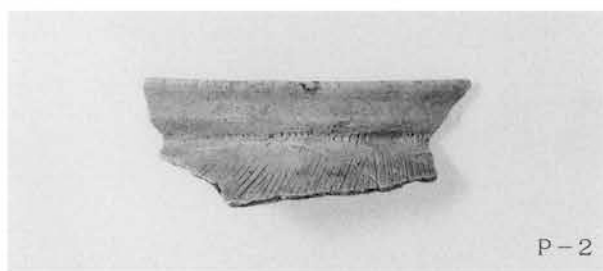
24号沟出土遺物



25号沟出土遺物



P-1



P-2

26号沟出土遺物



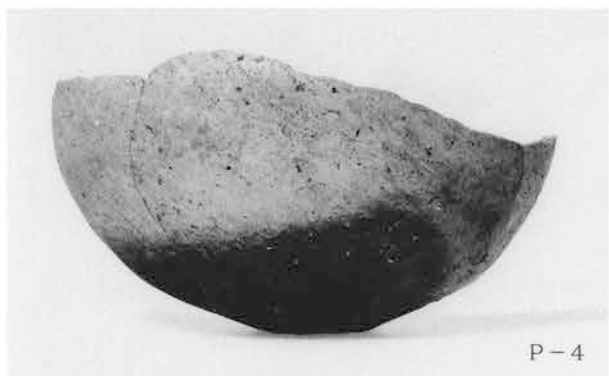
P-1



P-2



P-3

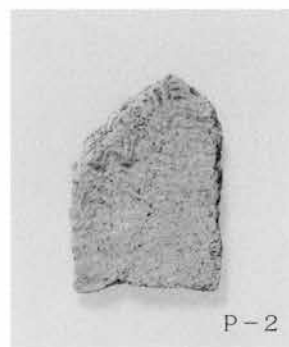


P-4

30号沟出土遺物



P-1



P-2

68号沟出土遺物



P-1

70号沟出土遺物



P-1

80号沟出土遺物



P-1



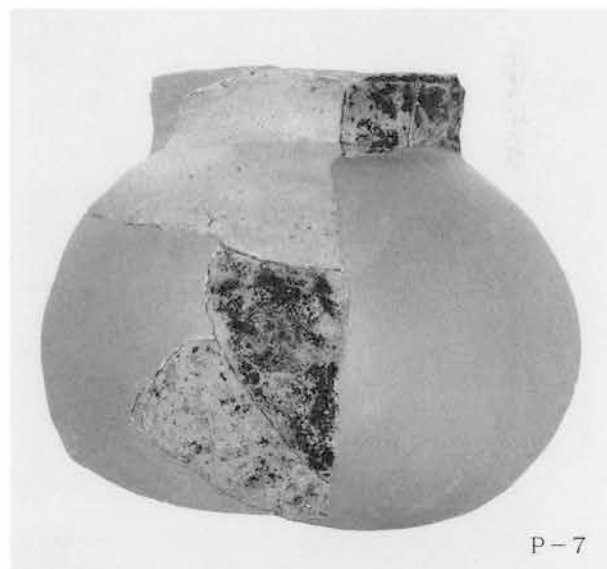
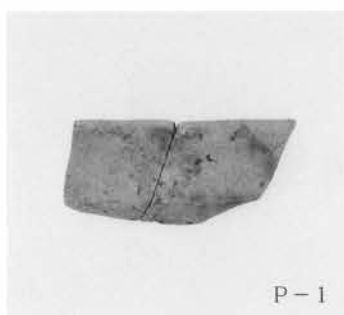
P-2

83号沟出土遺物



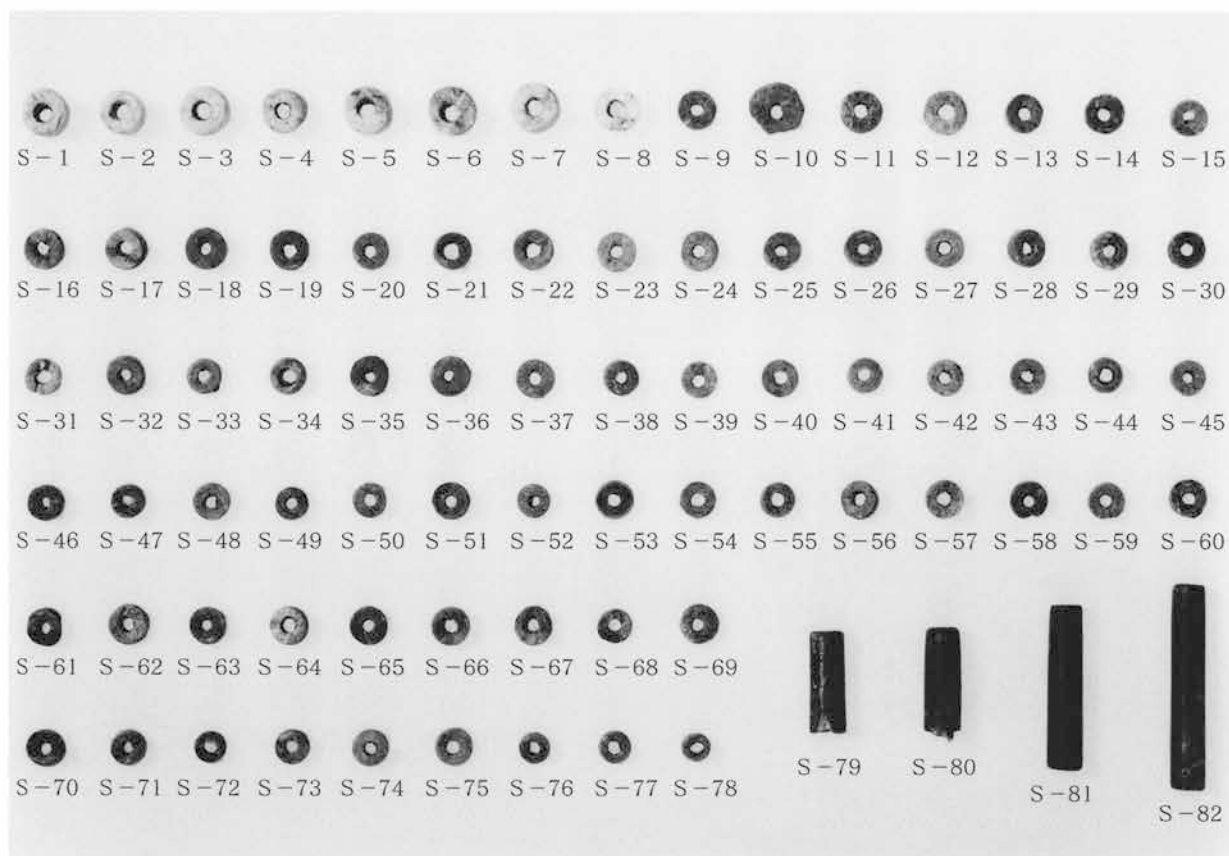
P-1

161号沟出土遺物

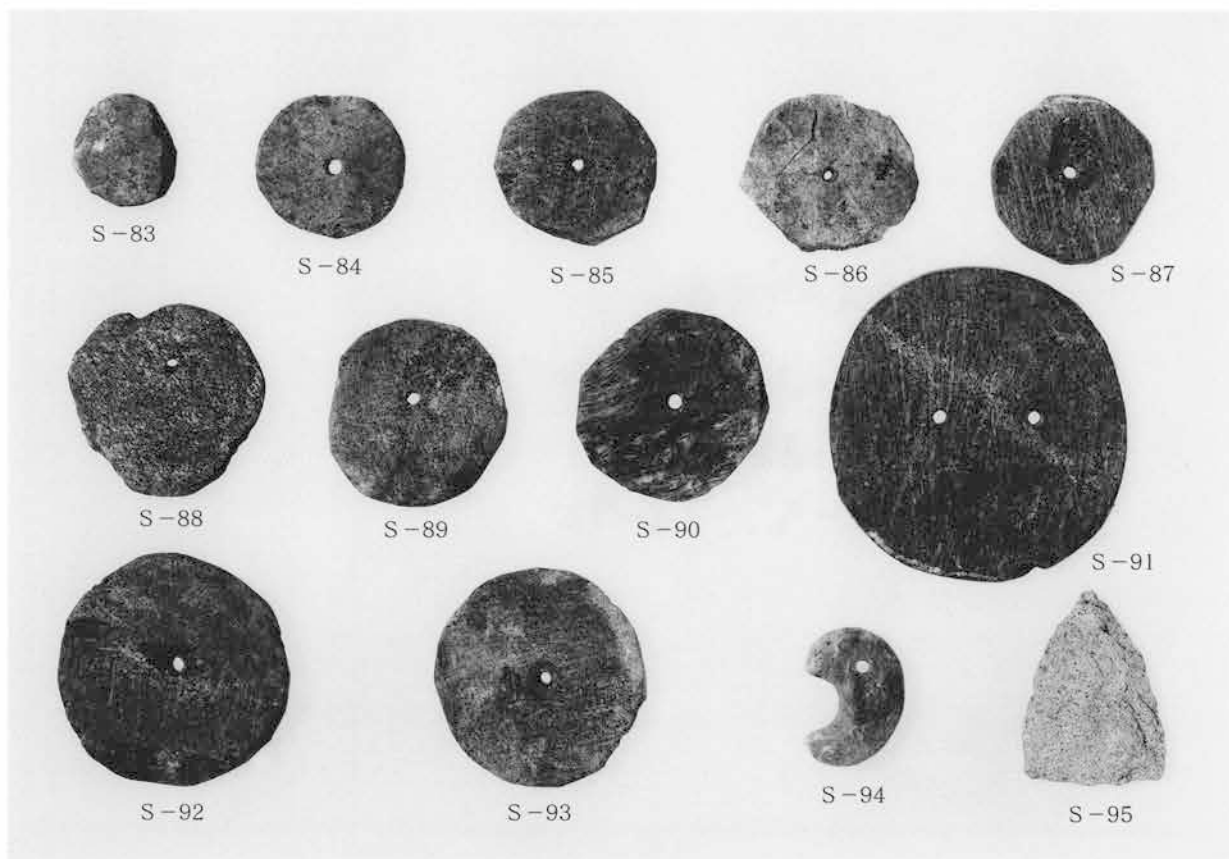


1号祭祀跡出土遺物(1)

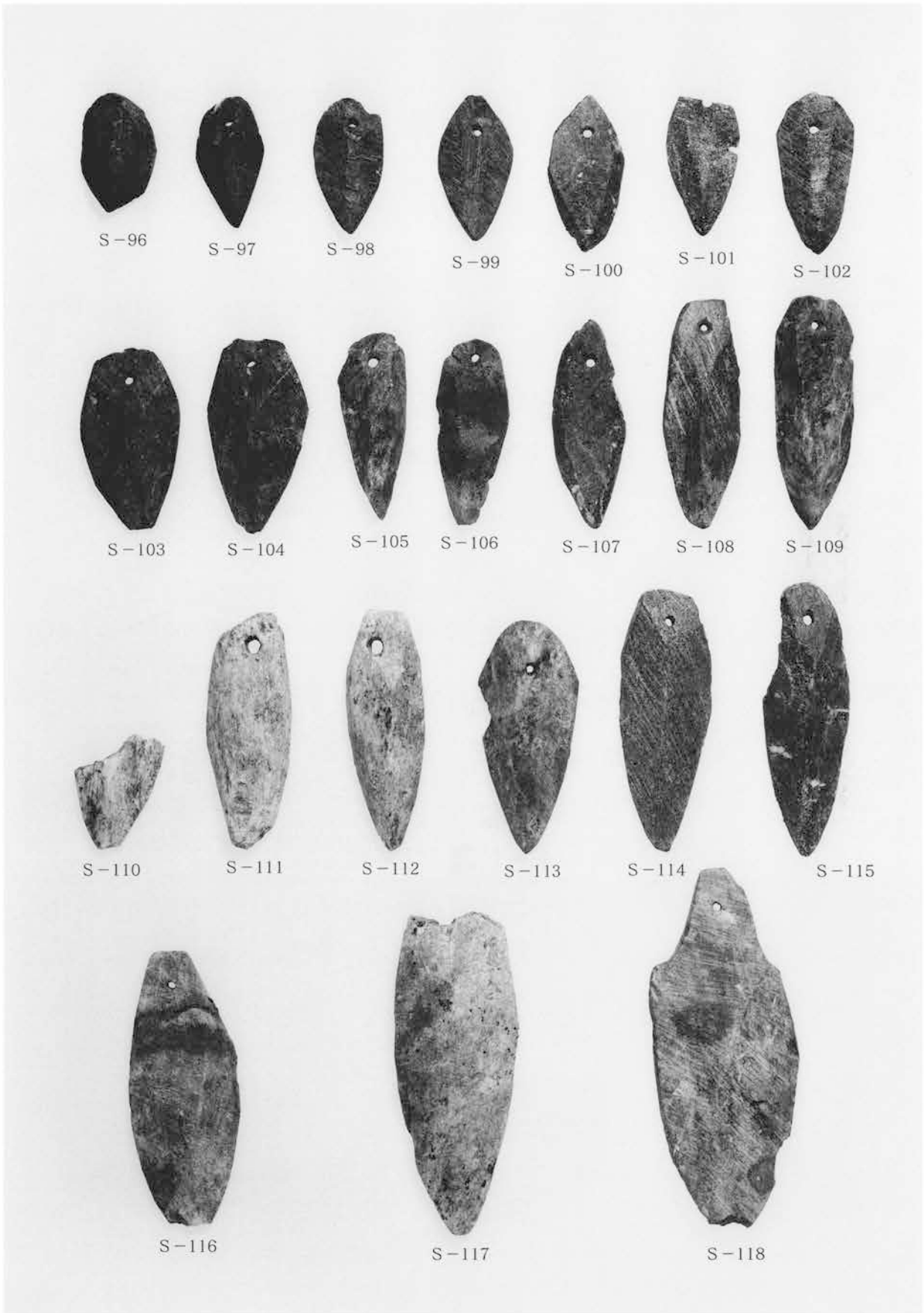
图版160



1号祭祀跡出土遺物(2)



1号祭祀跡出土遺物(3)



1号祭祀跡出土遺物(4)

図版162



2号祭祀跡出土遺物





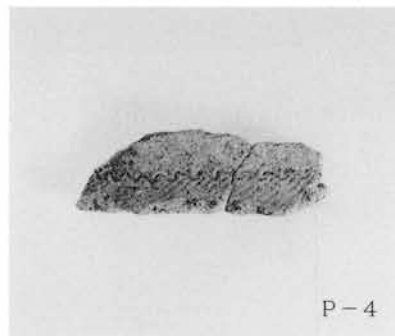
P-1



P-3



P-1



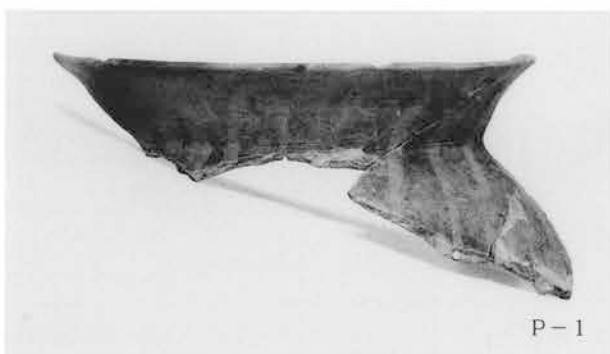
P-4

1号方形周溝墓出土遺物



P-1

1号埋設土器出土遺物



P-1

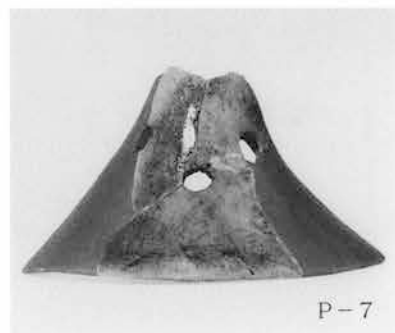
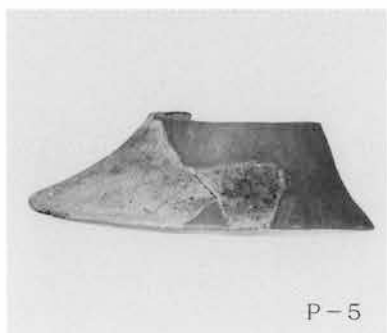
2号埋設土器出土遺物 (1)



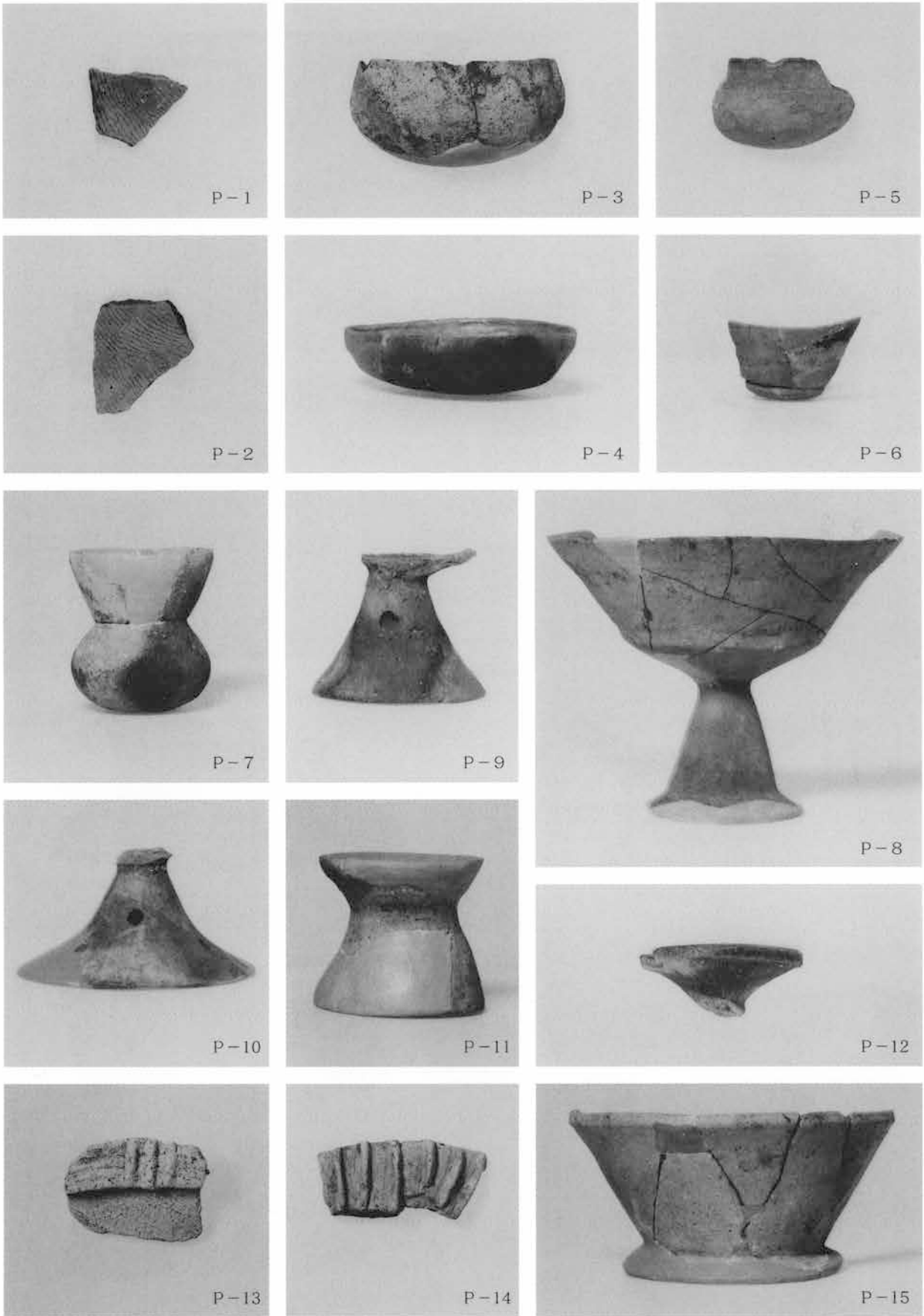
P-2



2号埋設土器出土遺物 (2)

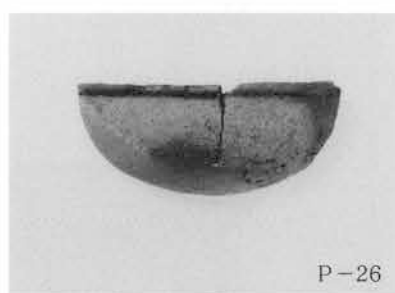
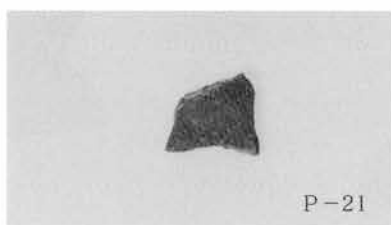


遺物集中地点出土遺物

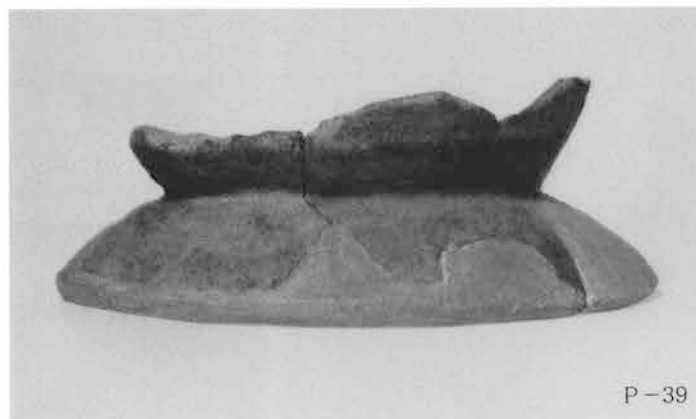
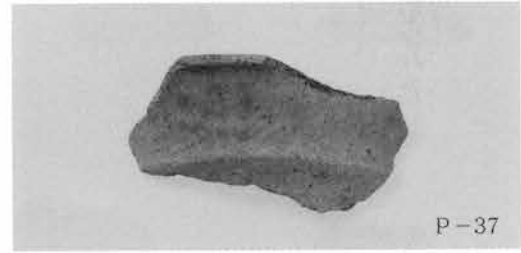
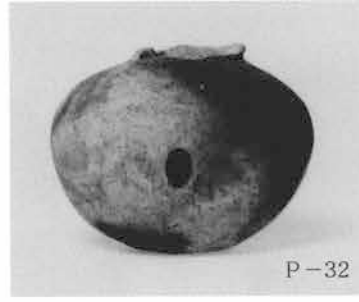


遺構外出土遺物 (1) (推定集落域)

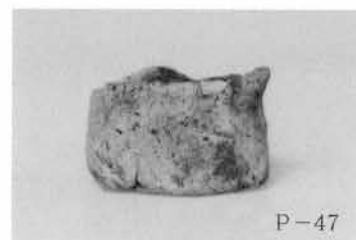
図版166



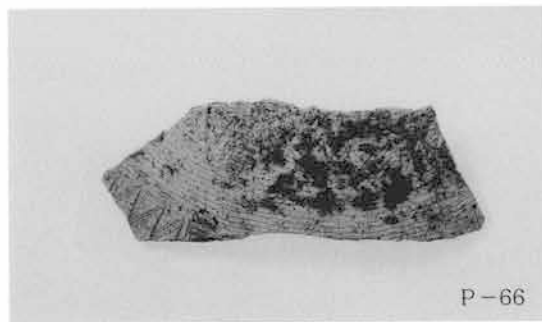
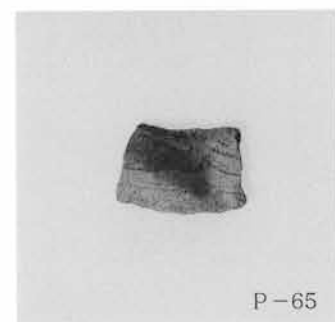
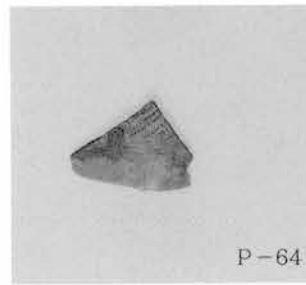
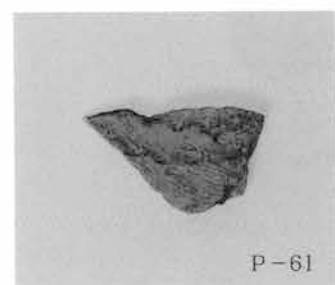
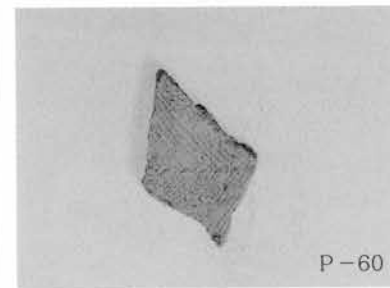
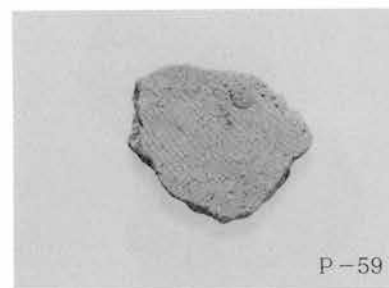
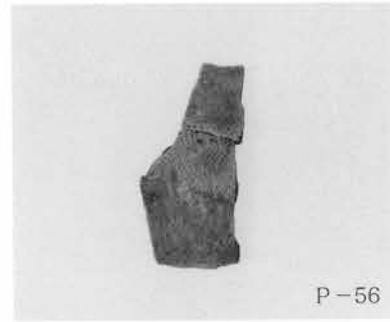
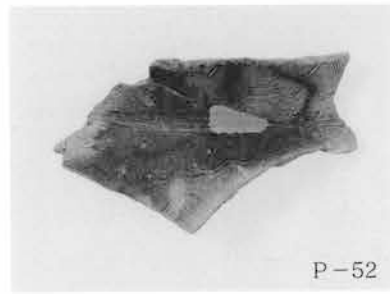
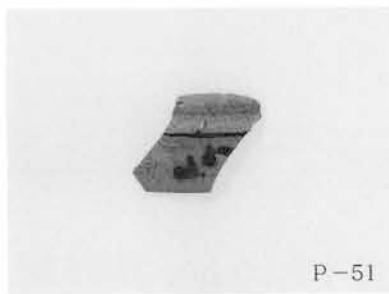
遺構外出土遺物 (2) (推定集落域・水田域)



遺構外出土遺物 (3) (水田域)

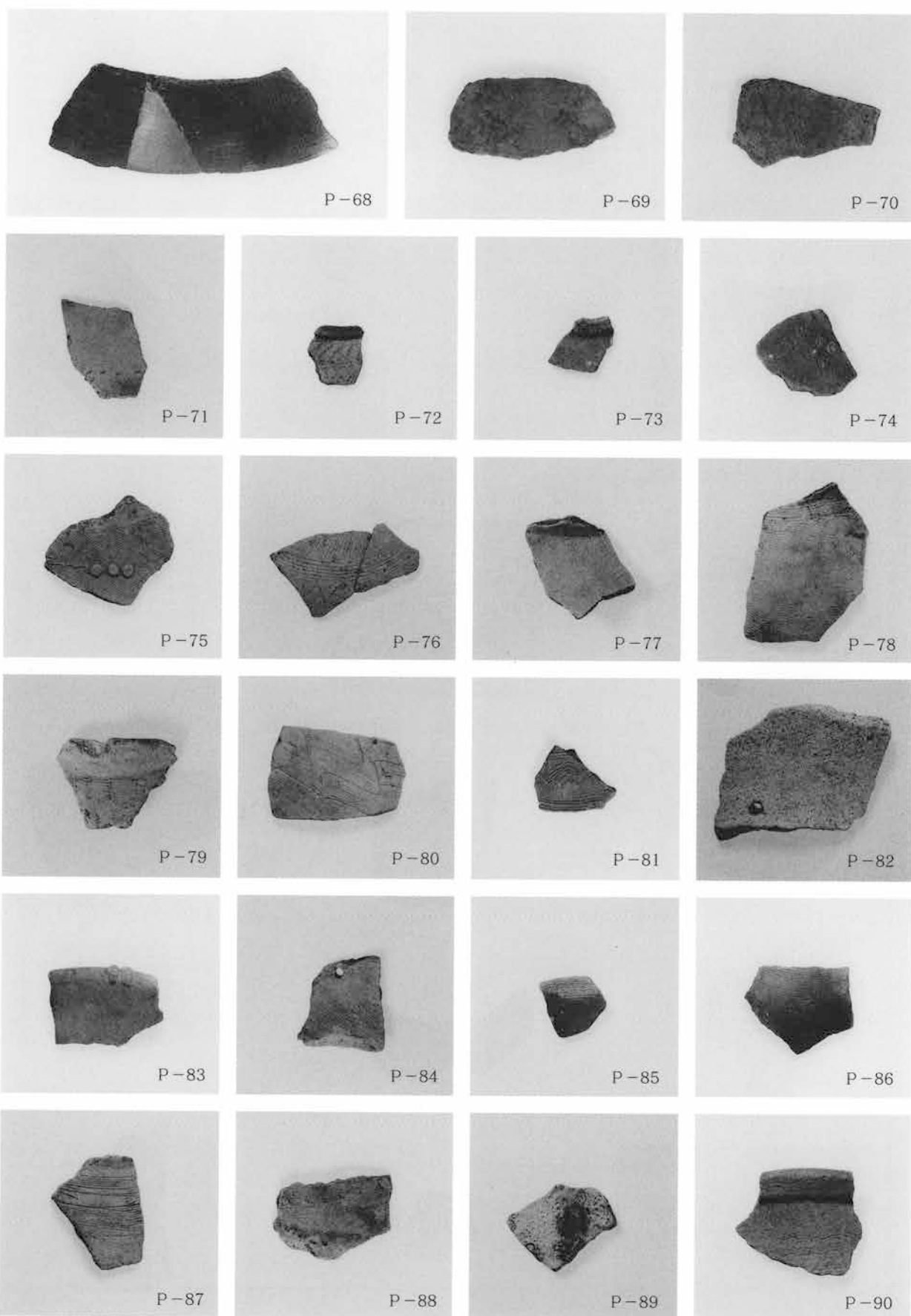


遺構外出土遺物 (4) (水田域)



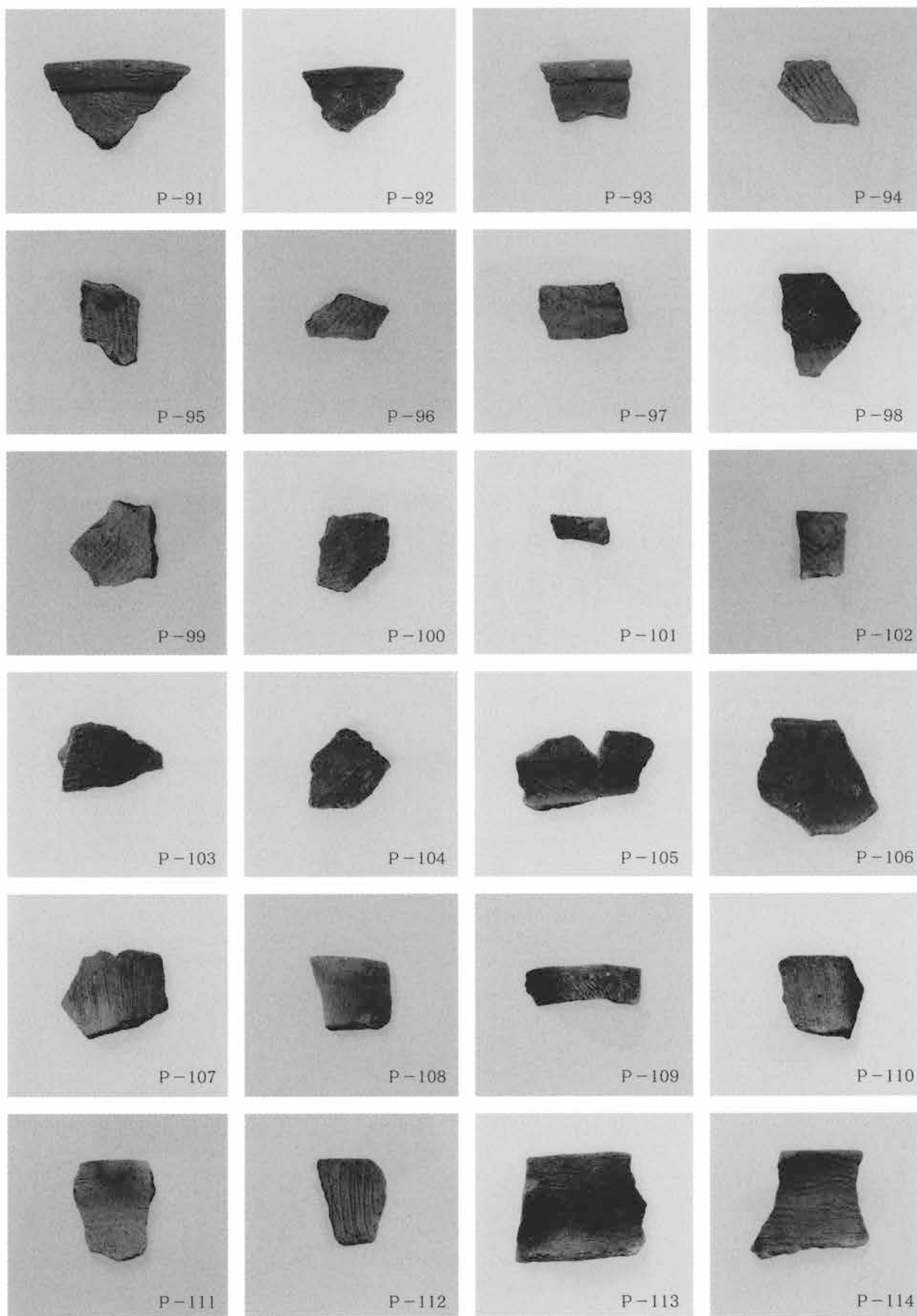
遺構外出土遺物 (5) (水田域・集落・畠域)

図版170



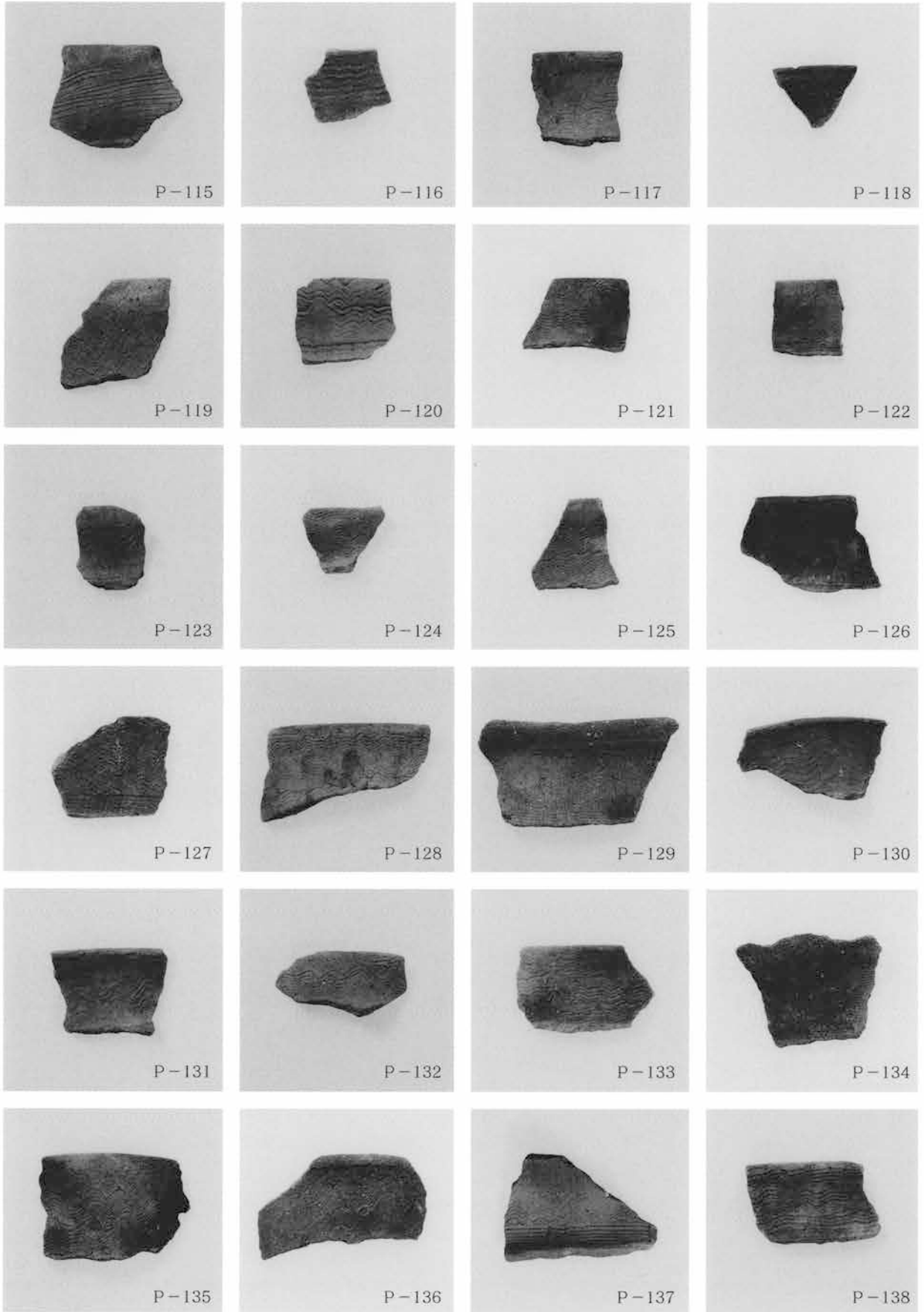
遺構外出土遺物(6) (集落・畠域)



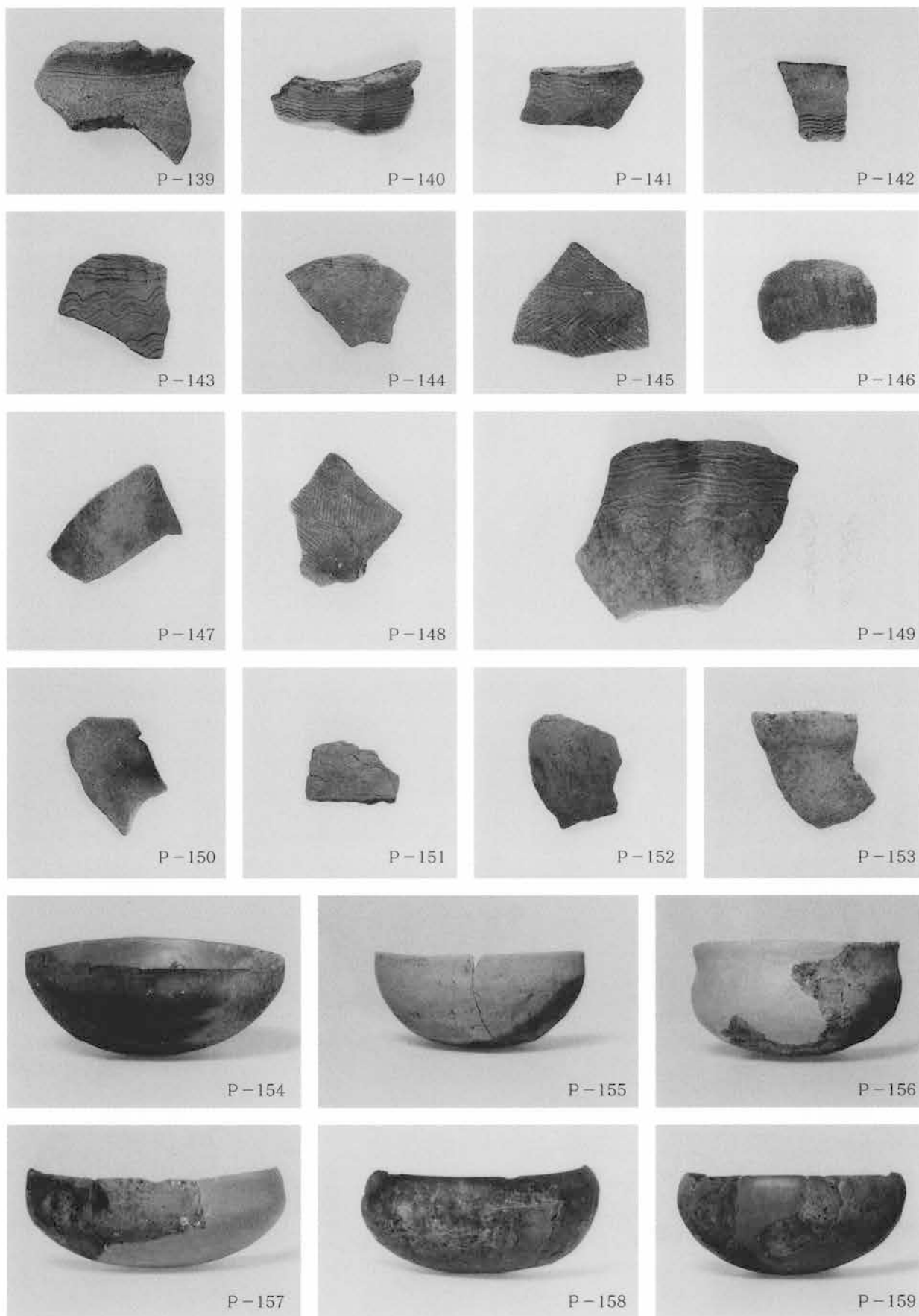


遺構外出土遺物 (7) (集落・畠城)

图版172



遺構外出土遺物 (8) (集落・畠域)



遺構外出土遺物 (9) (集落・畠域)

図版174



P-160



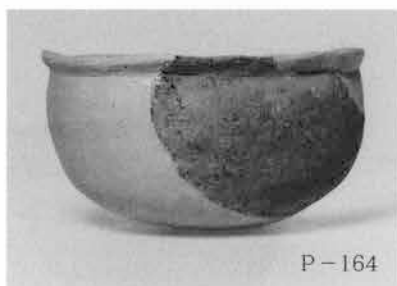
P-161



P-162



P-163



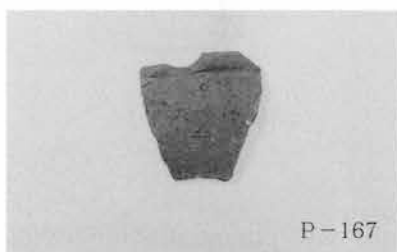
P-164



P-165



P-166



P-167



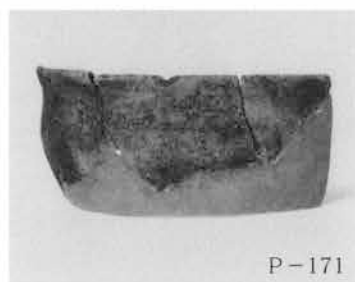
P-168



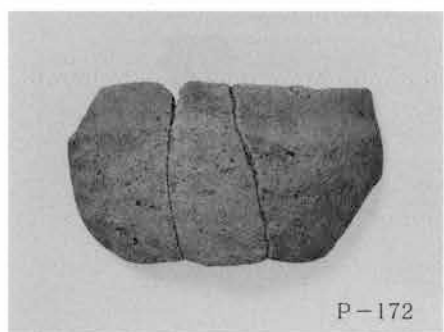
P-169



P-170



P-171



P-172



P-173



P-174



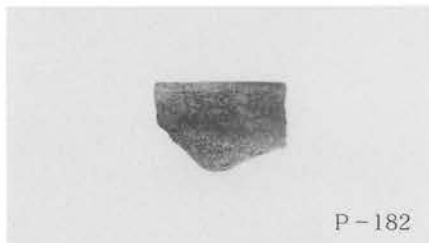
P-175



P-177



P-176

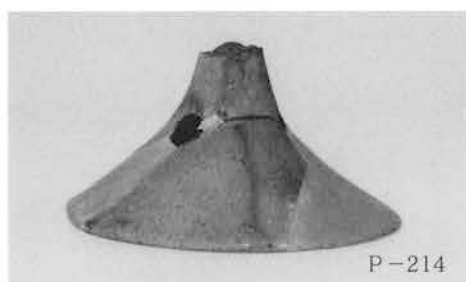


遺構外出土遺物 (11) (集落・畠域)

图版176

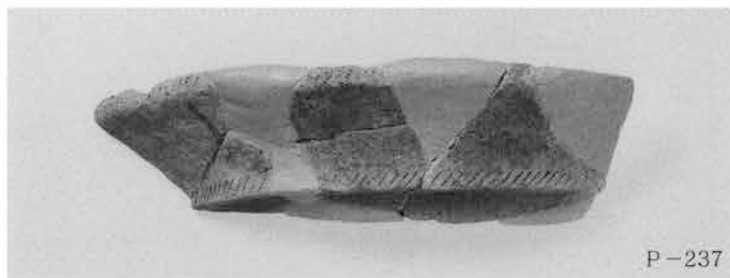
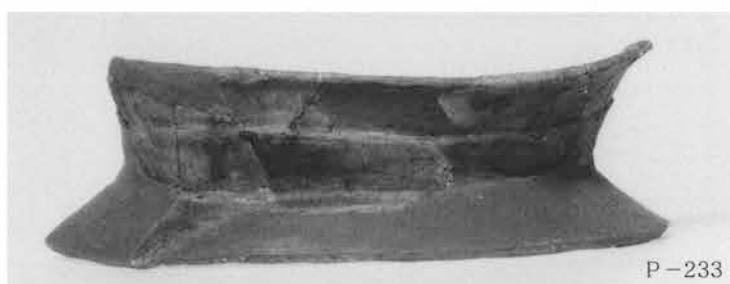
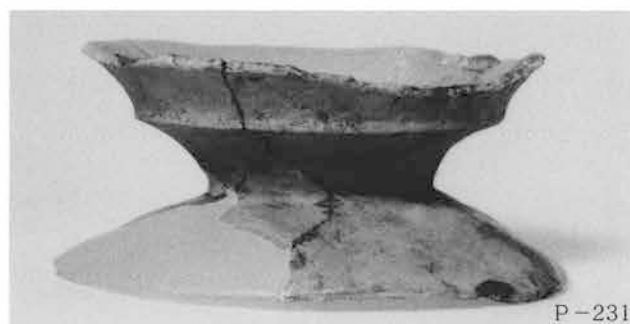


遺構外出土遺物 (12) (集落・畠城)



遺構外出土遺物 (13) (集落・畠域)

図版178



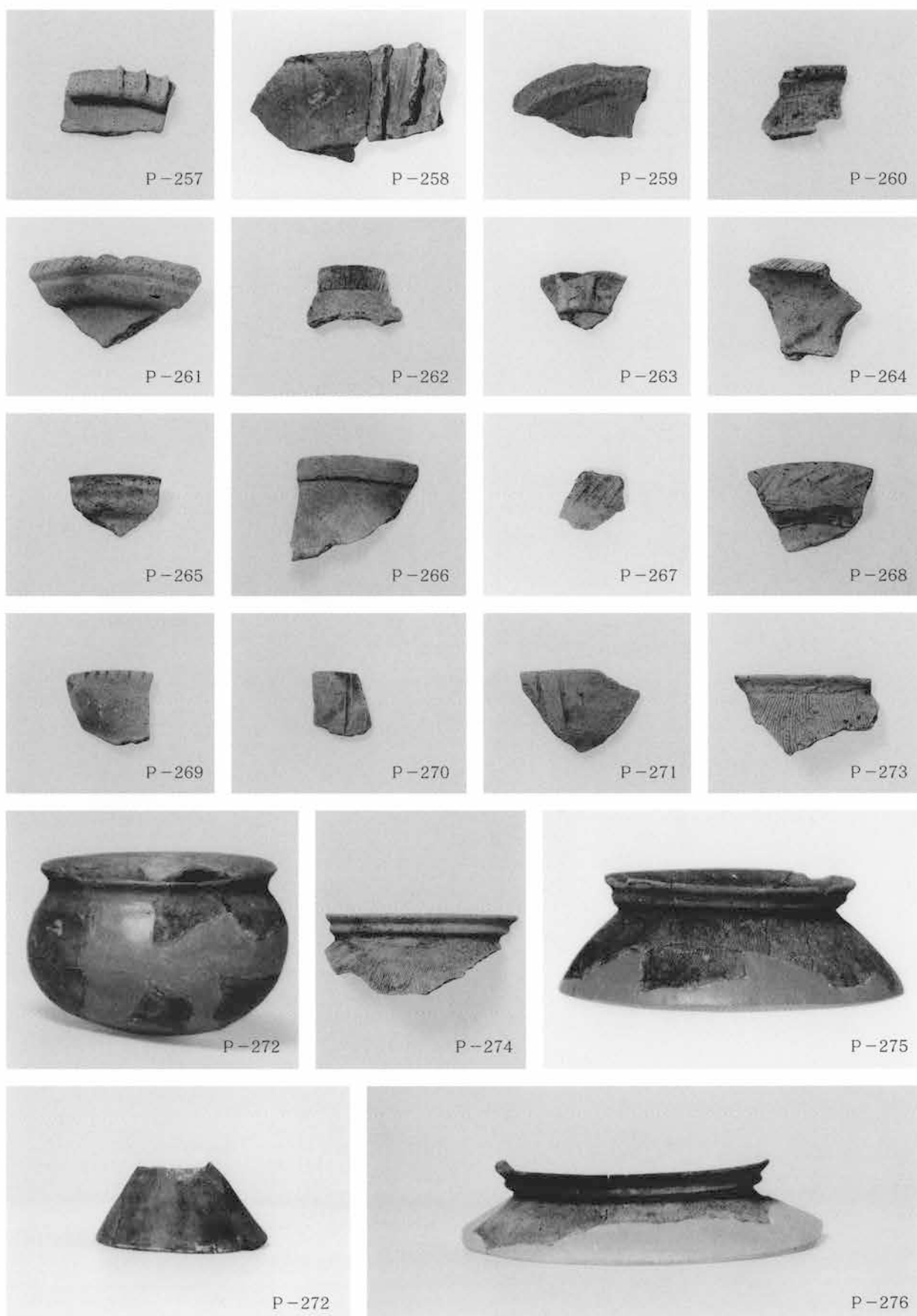
遺構外出土遺物 (14) (集落・畠城)



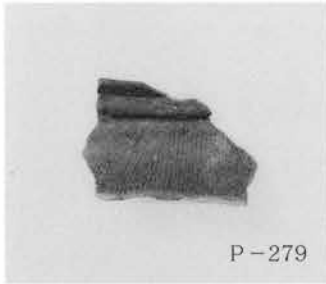
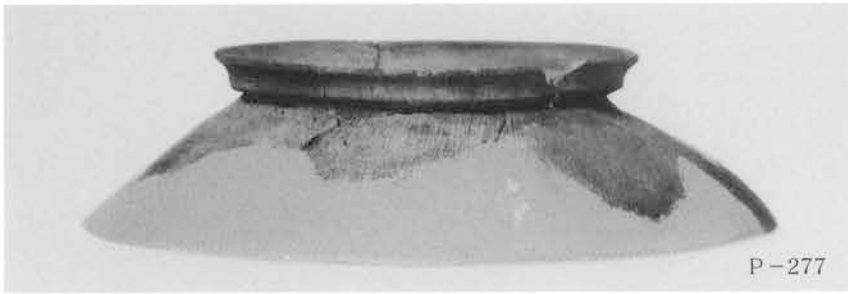


遺構外出土遺物 (15) (集落・畠域)

図版180



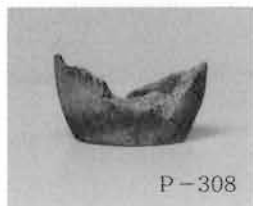
遺構外出土遺物 (16) (集落・畠城)



遺構外出土遺物 (17) (集落・畠域)

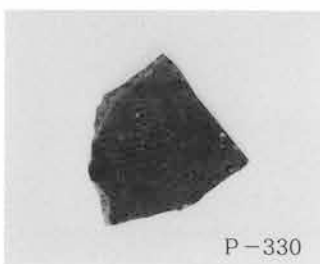


遺構外出土遺物 (18) (集落・畠域)

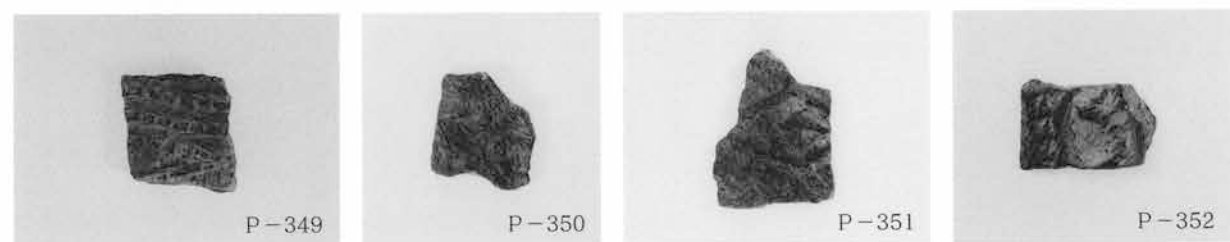
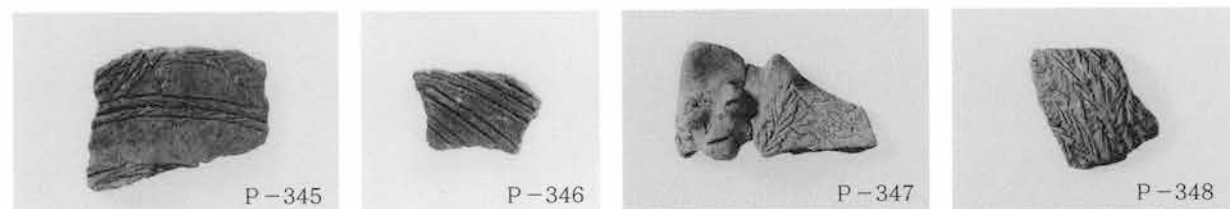
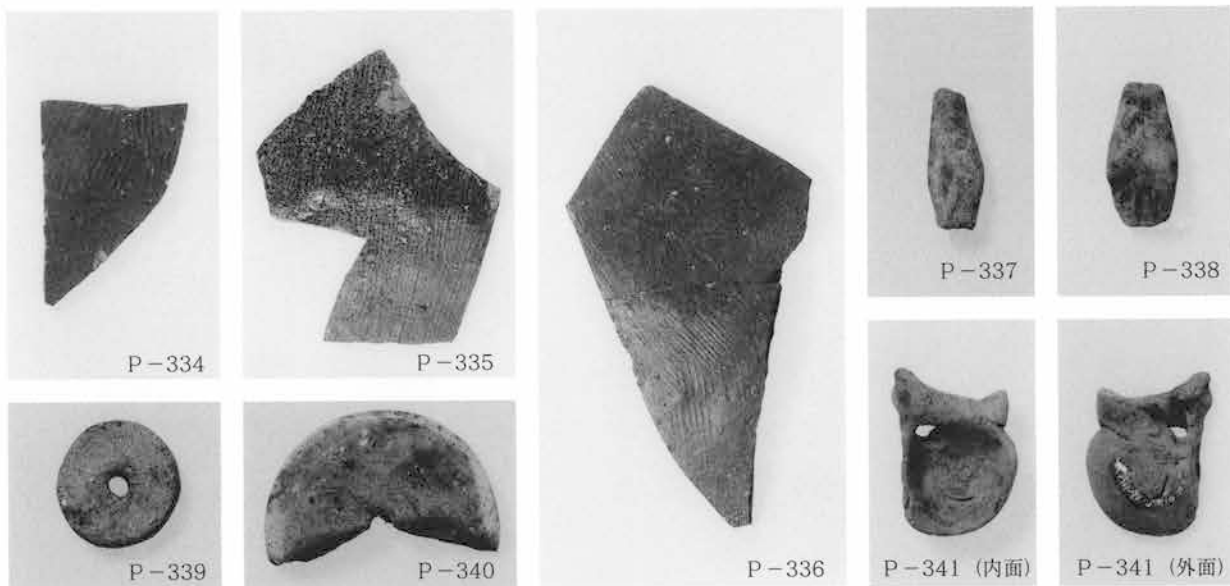


遺構外出土遺物 (19) (集落・畠城)

図版184

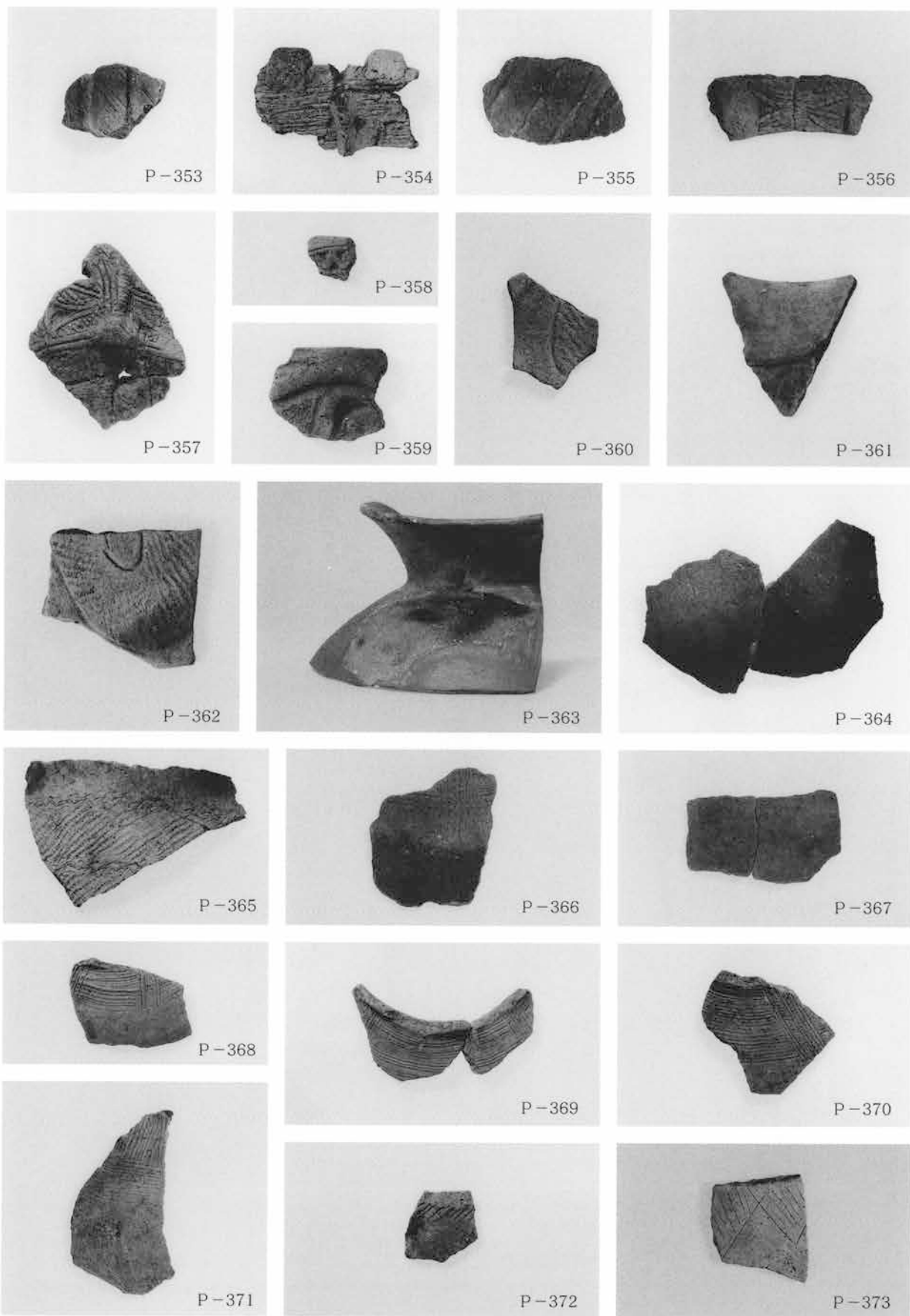


遺構外出土遺物 (20) (集落・畠域)



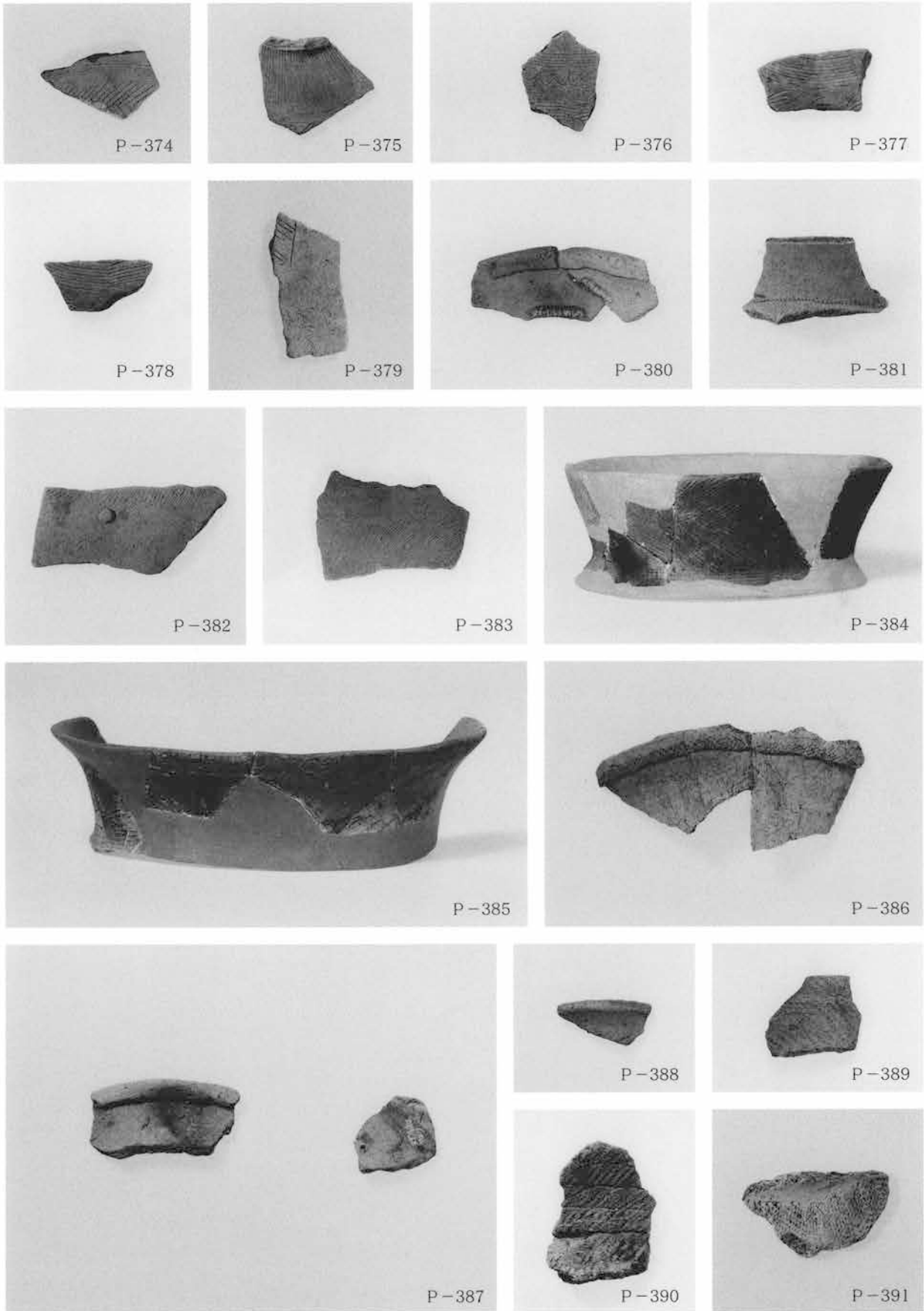
遺構外出土遺物 (21) (集落・畠域・畠・墓域)

図版186



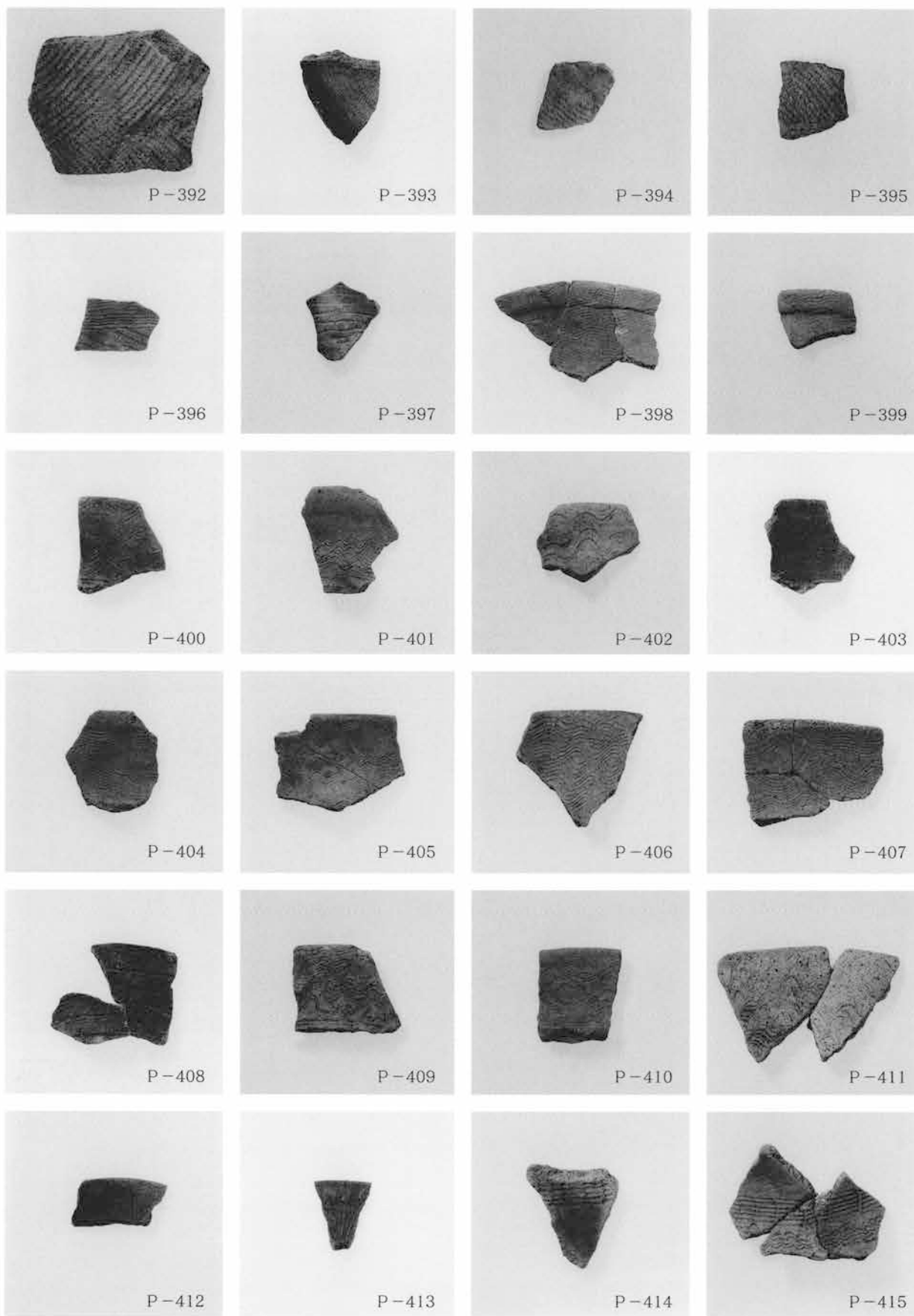
遺構外出土遺物 (22) (畠・墓域)



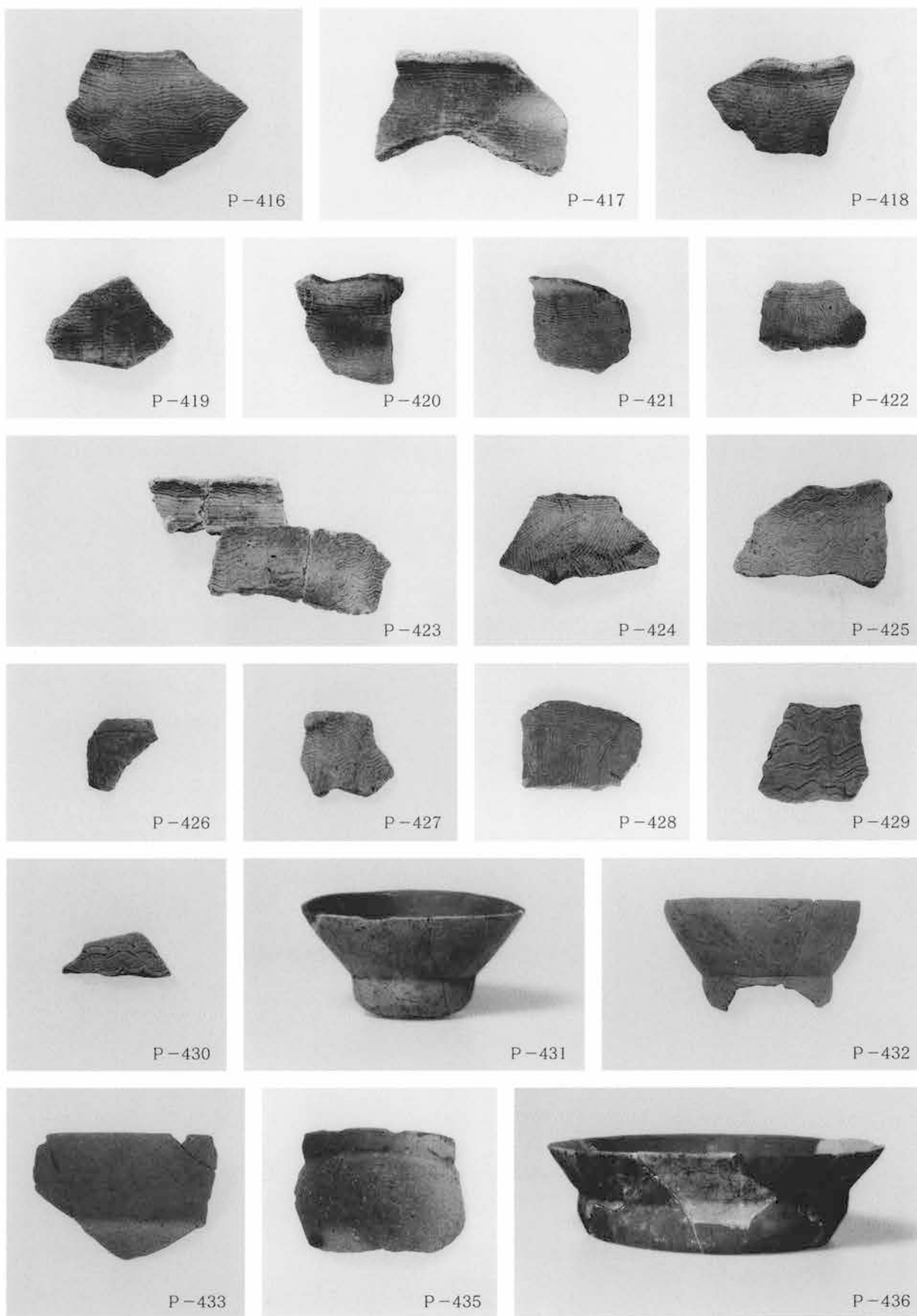


遺構外出土遺物 (23) (畠・墓域)

图版188



遺構外出土遺物 (24) (畠・墓域)



遺構外出土遺物 (25) (畠・墓域)

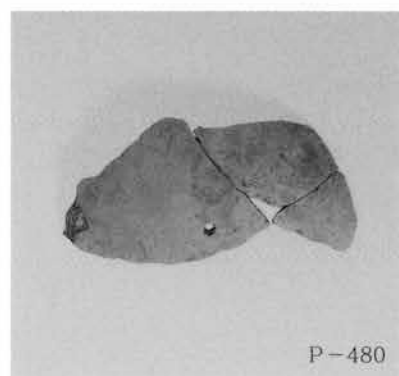
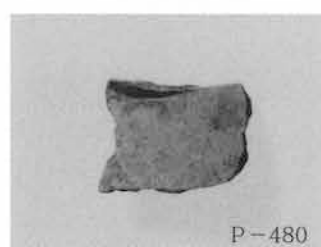
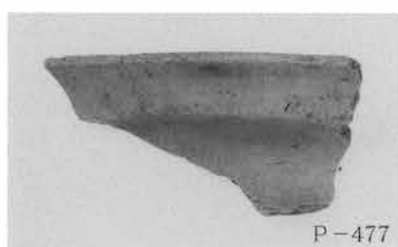
図版190



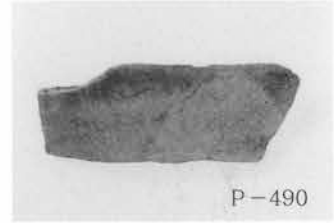
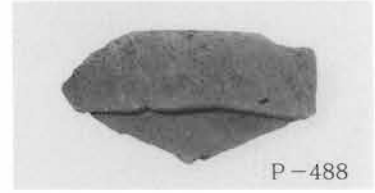
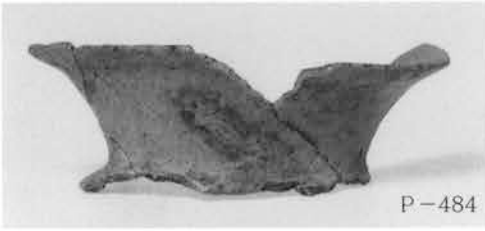
遺構外出土遺物 (26) (島・墓域)



遺構外出土遺物 (27) (畠・墓域)

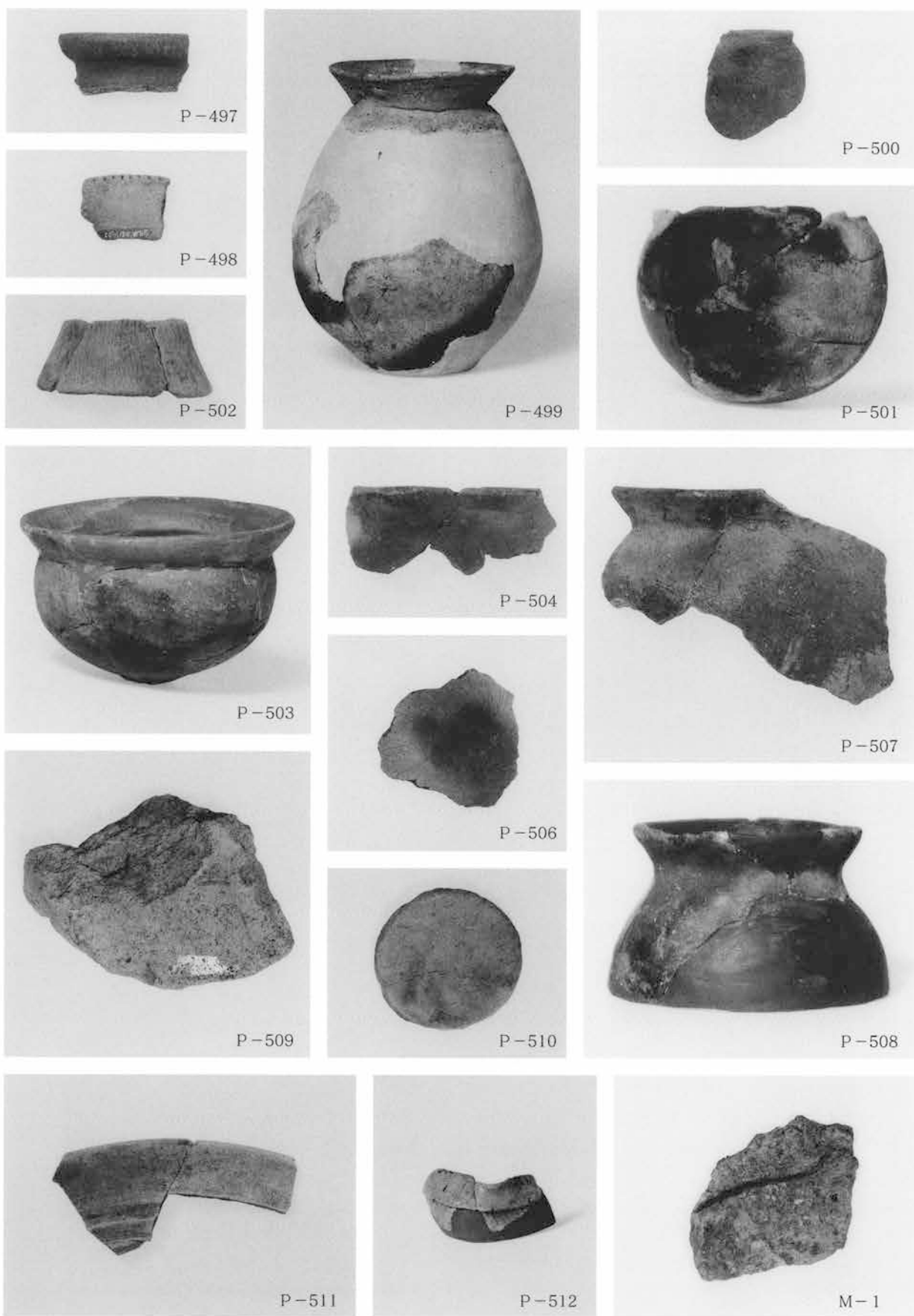


遺構外出土遺物 (28) (畠・墓域)



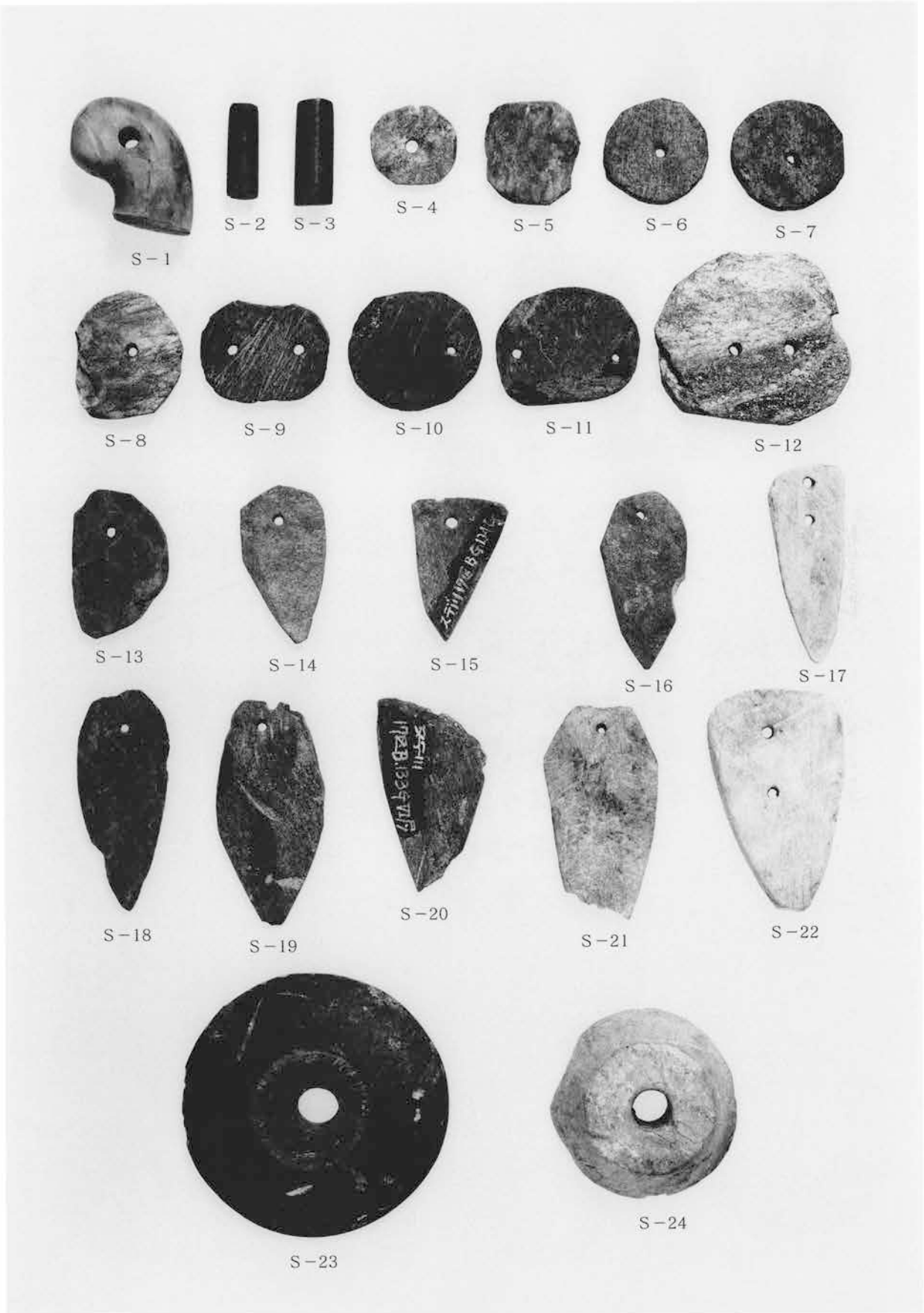
遺構外出土遺物 (29) (畠・墓域)

図版194

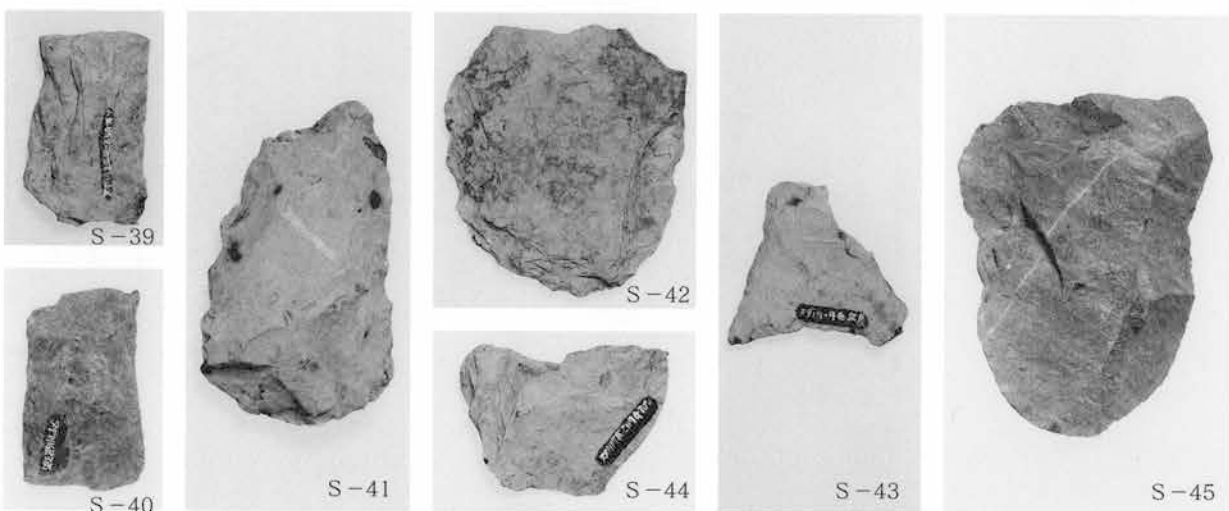
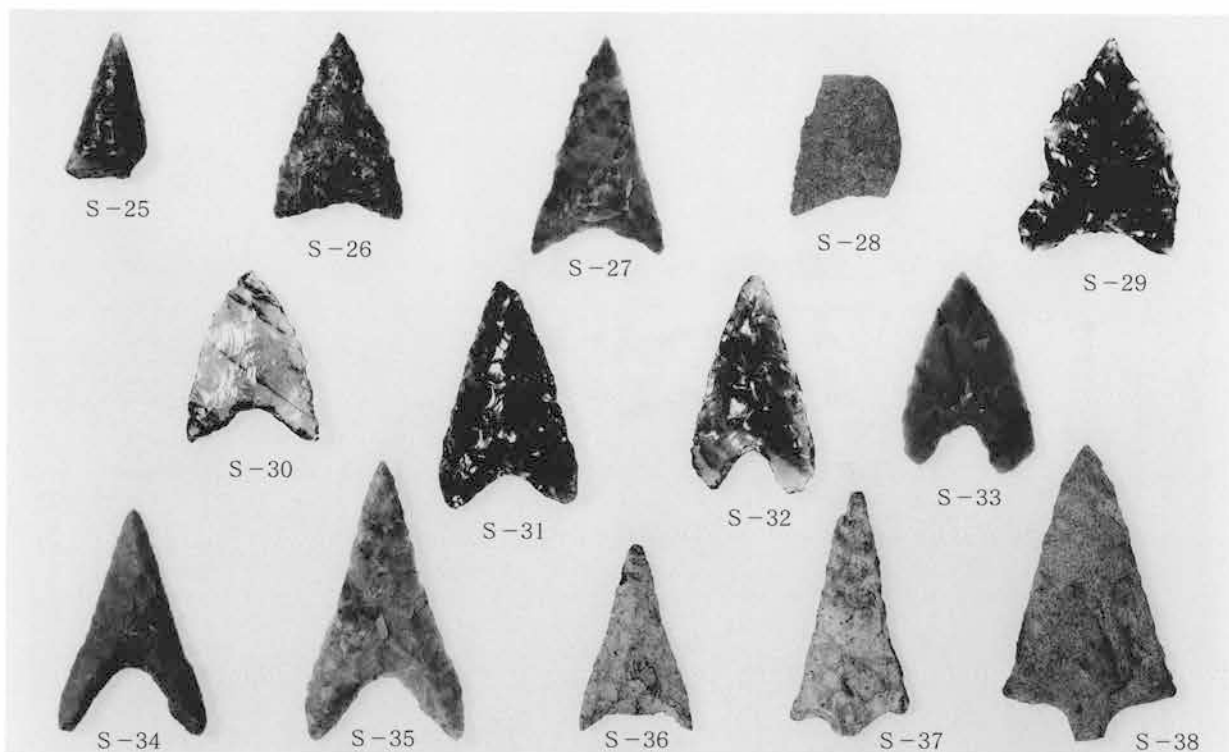


遺構外出土遺物 (30) (畠・墓域)

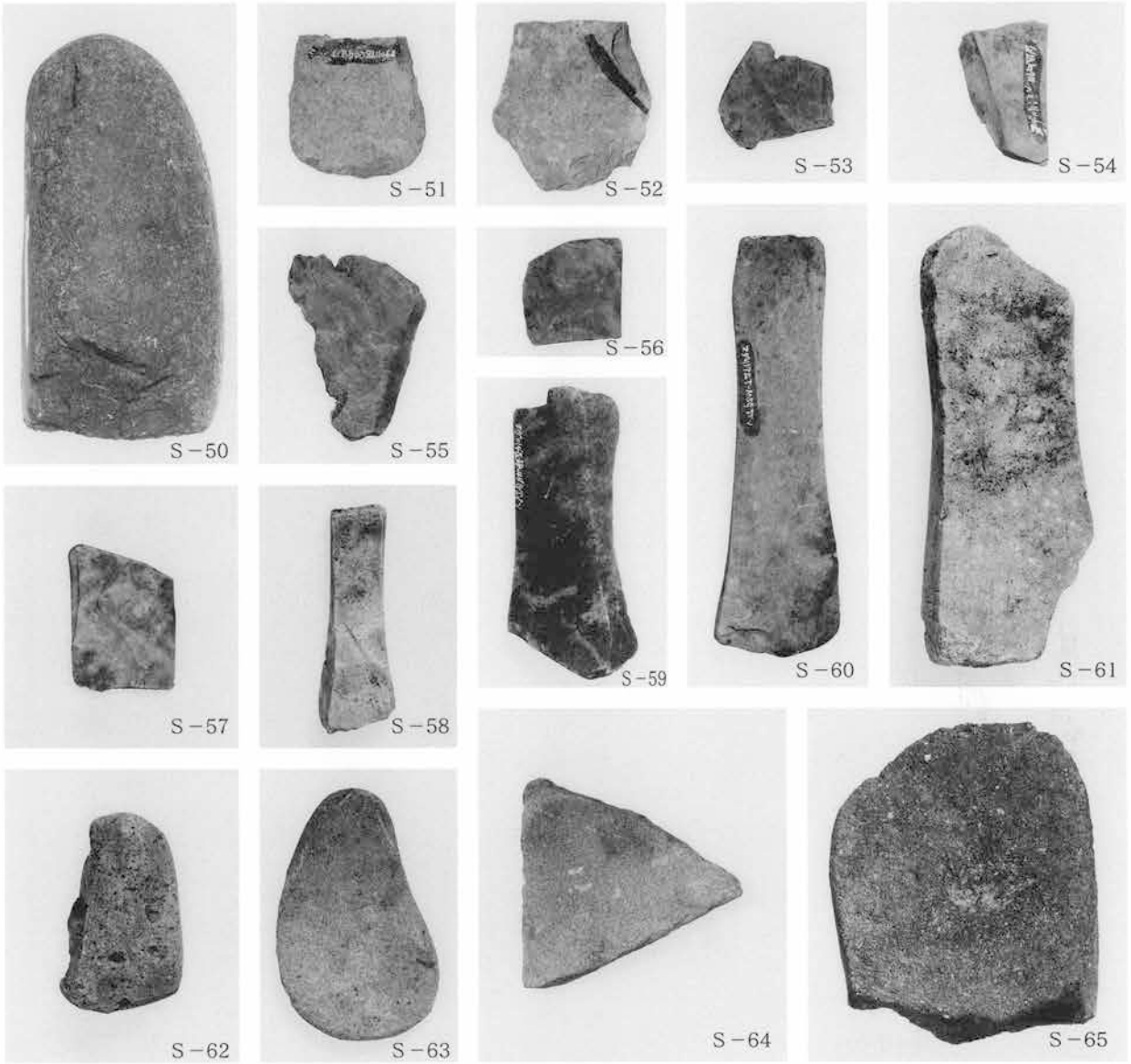




遺構外出土遺物 (31)



遺構外出土遺物 (32)



遺構外出土遺物 (33)



遺構外出土遺物 (34)





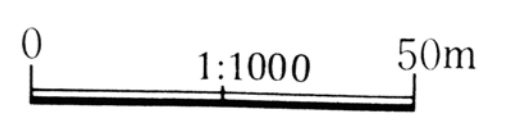
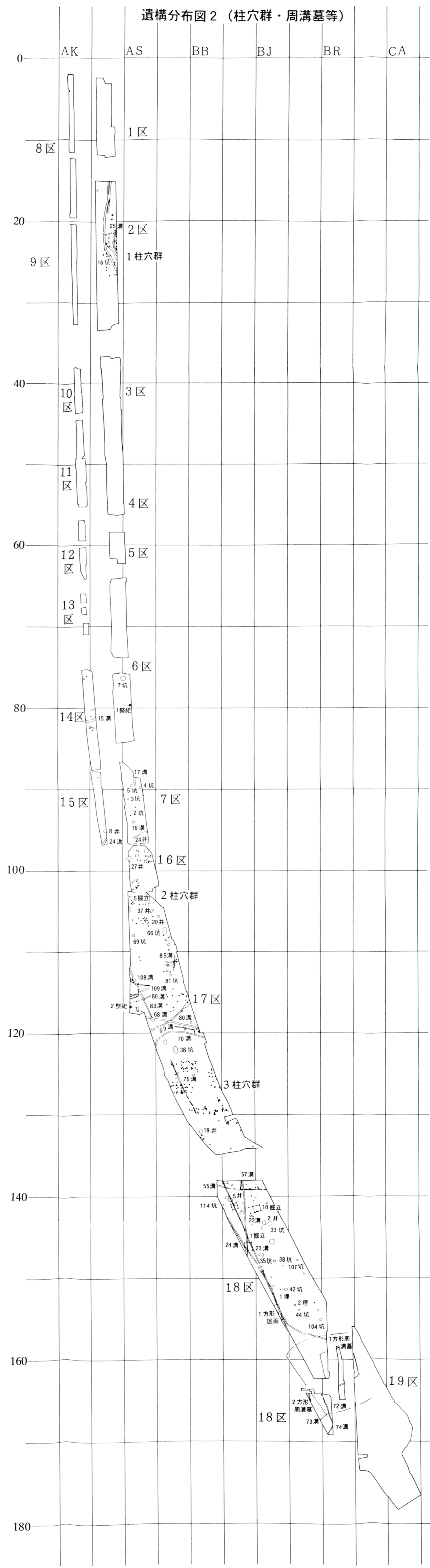
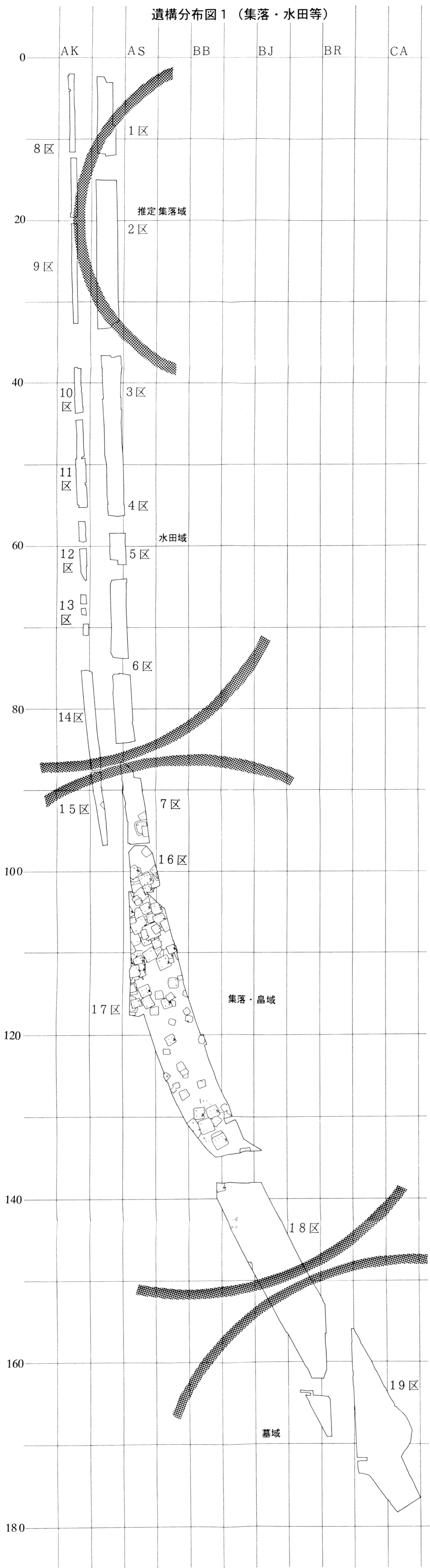
財群馬県埋蔵文化財調査事業団  
発掘調査報告第224集

勝島川端遺跡

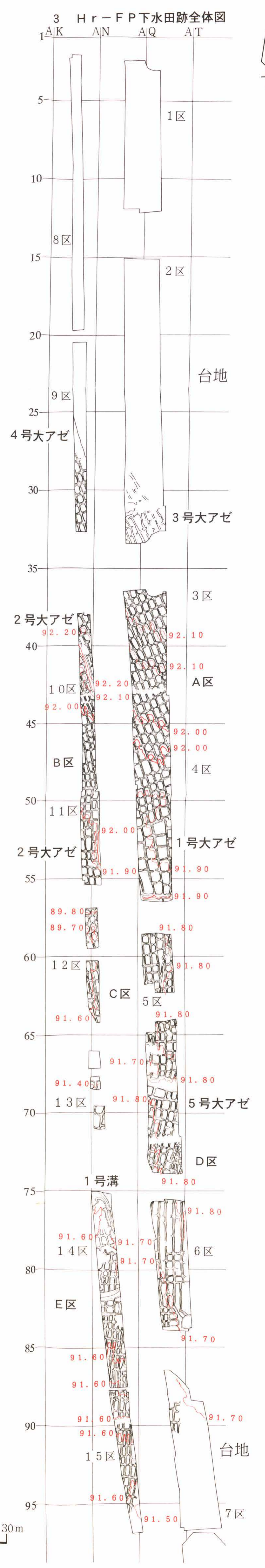
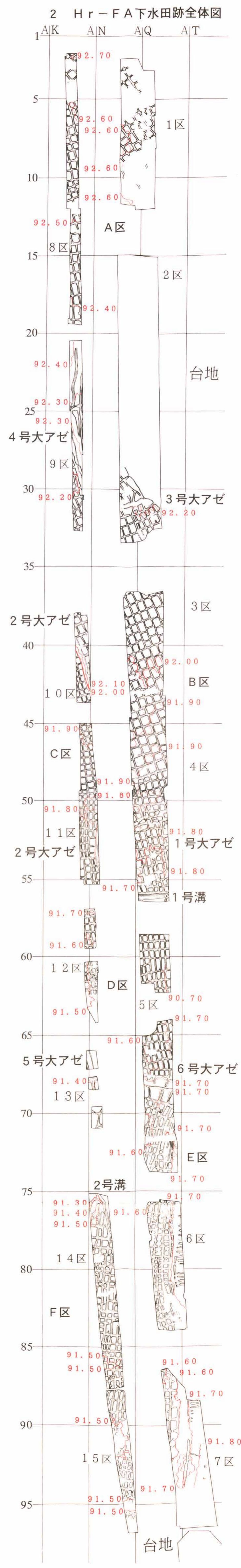
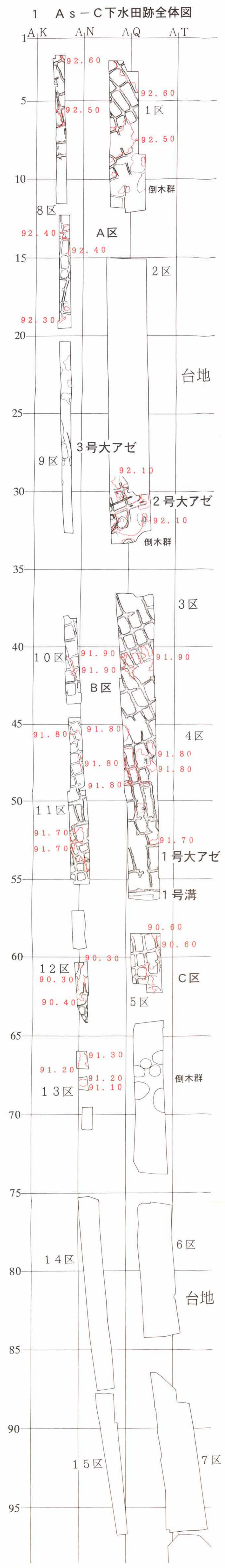
主要地方道前橋長湊線道路改築(改良)工事に伴う  
埋蔵文化財調査報告書第1集

1996年3月26日 印刷  
1996年3月26日 発行

編集・発行／財群馬県埋蔵文化財調査事業団  
勢多郡北橋村下箱田784-2  
電話 (0279) 52-2511(代表)



付図1



付図2

2 Hr-FA下畠跡全体図

1 As-C下畠跡全体図

