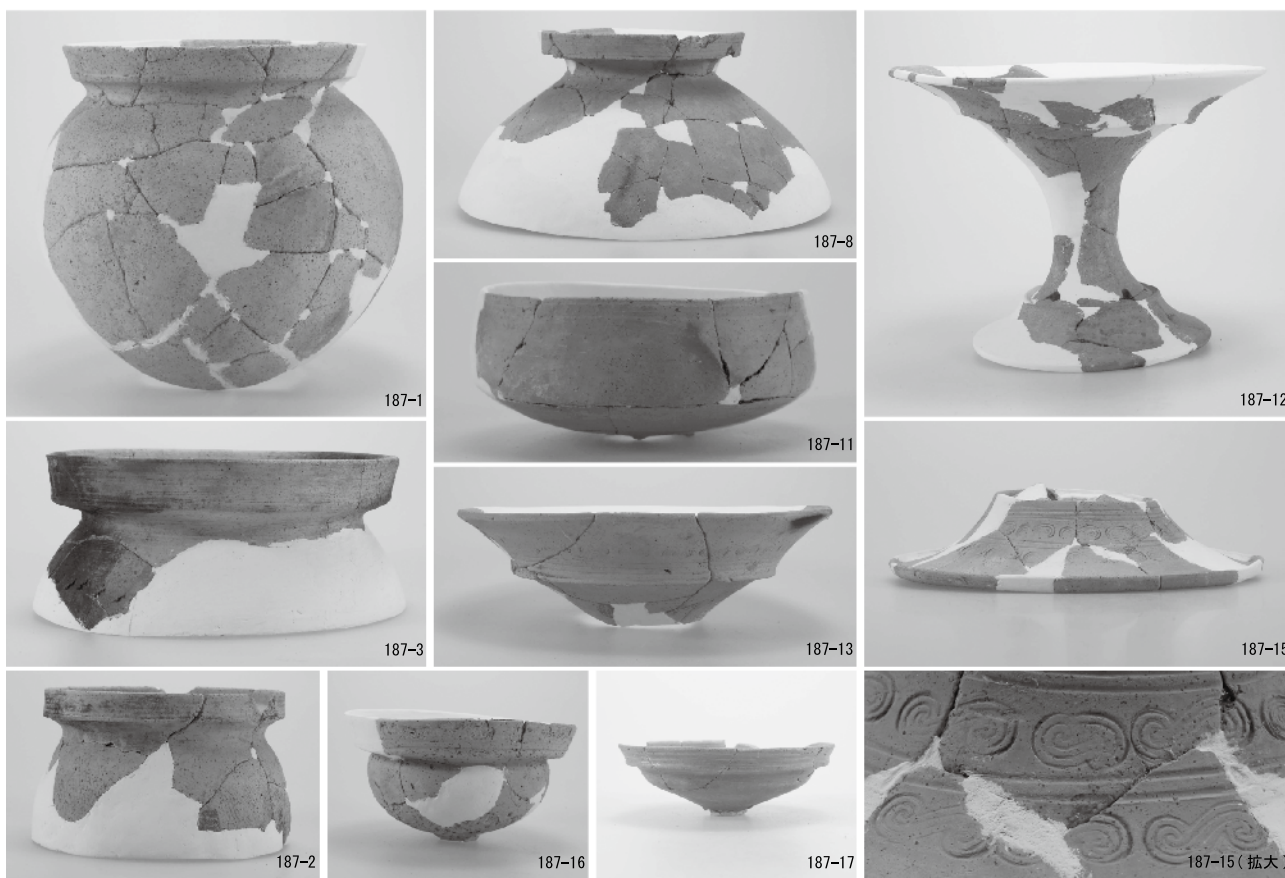
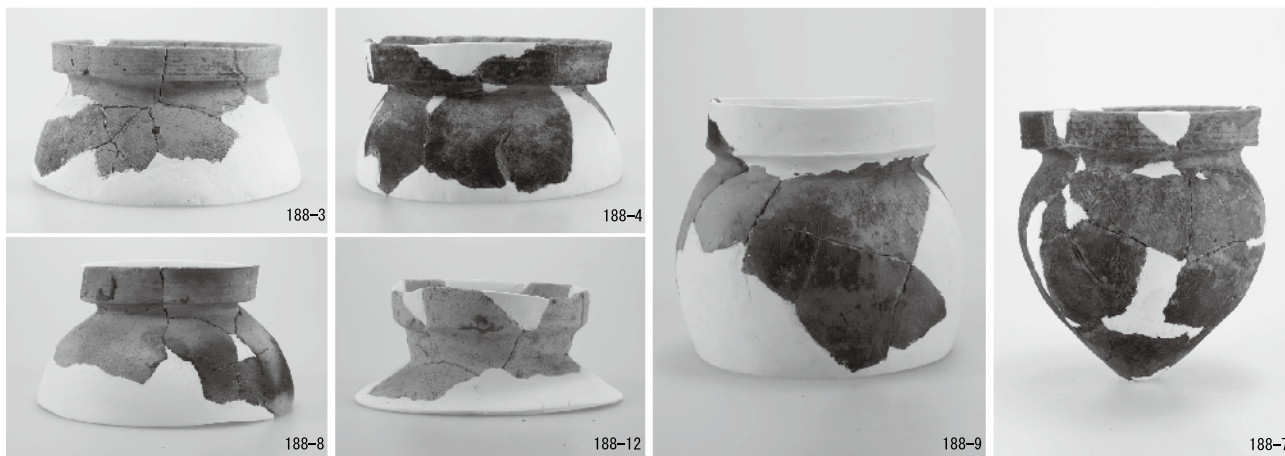


SI24

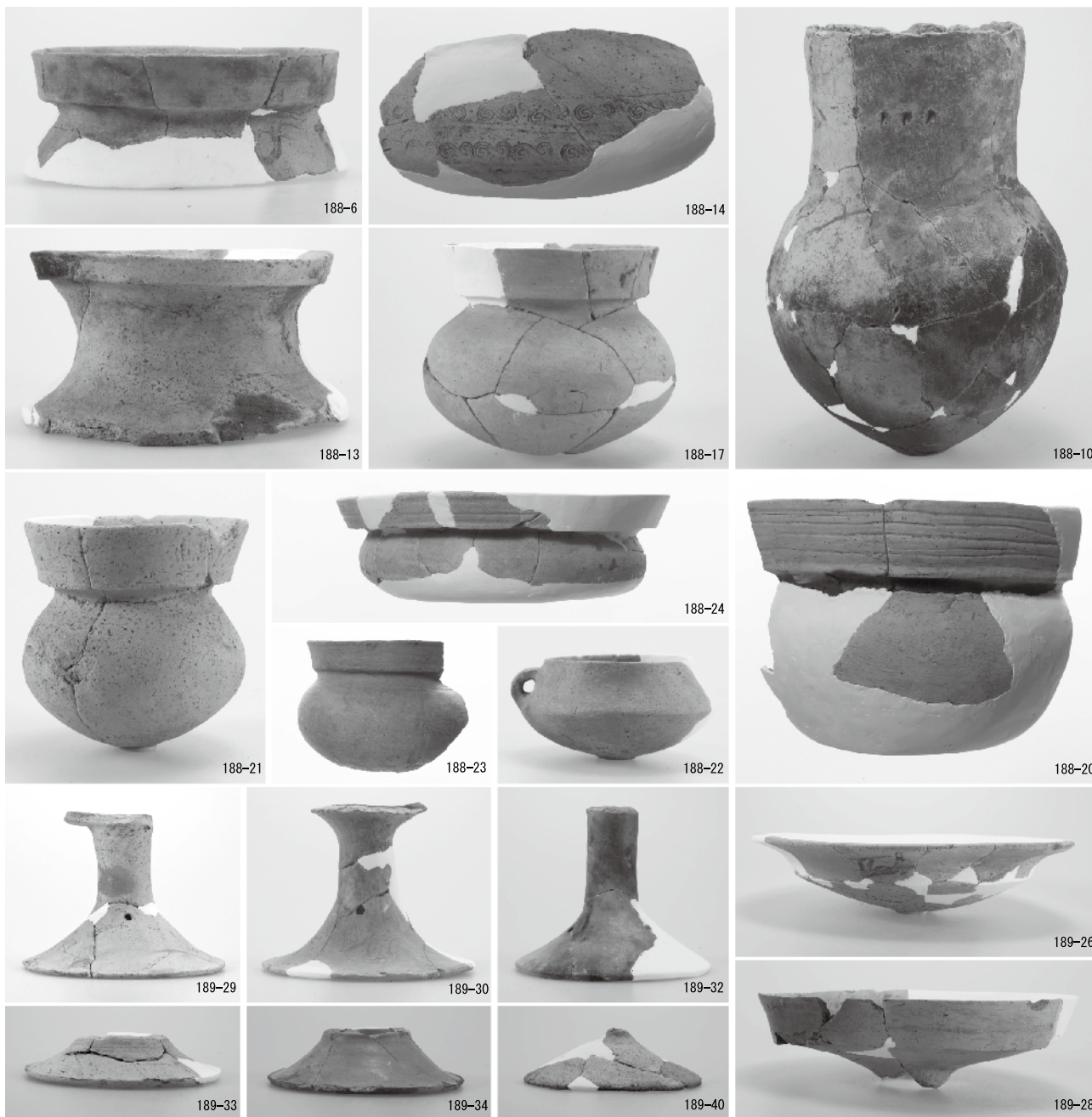


SI25

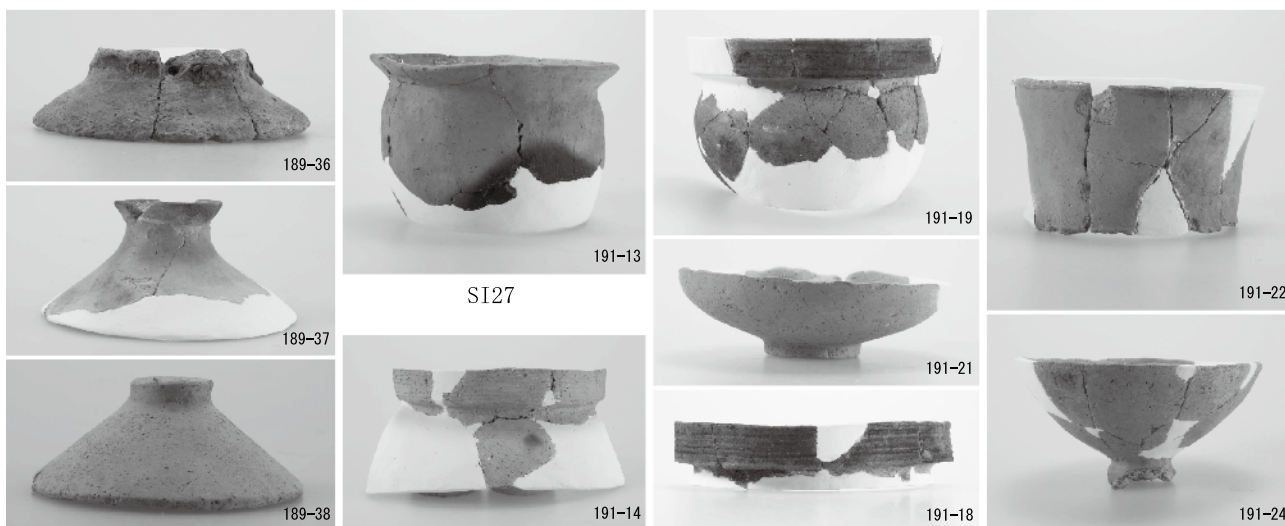


SI26

図版第七六 遺物 土器（中地区住居）



SI26



SI26

SI28

SI32

SI33



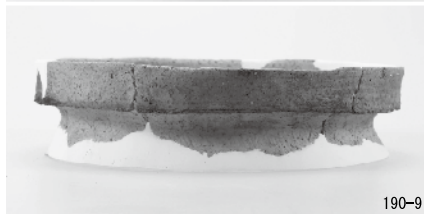
190-6



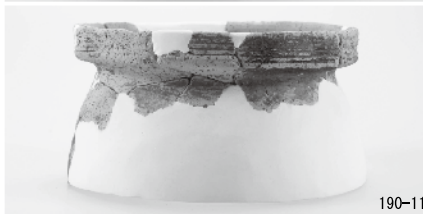
190-7



190-8



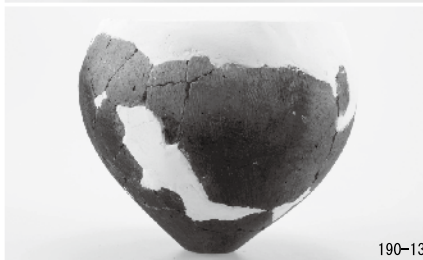
190-9



190-11



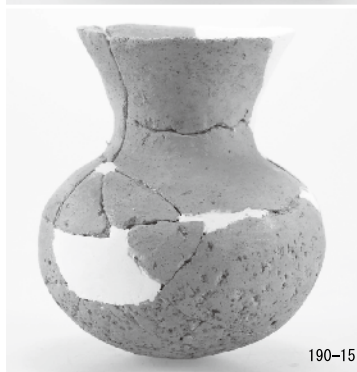
190-10



190-13



190-14



190-15



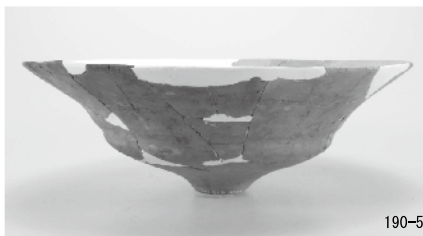
190-16



SI36



190-1



190-5



190-3



190-17

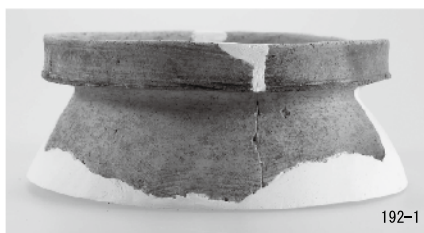


190-17 (拡大)

SI35

SI36

図版第七八 遺物 土器（中地区土坑）



SK5190



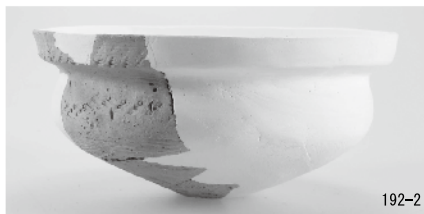
SK5199



SK5195



SK5198



SK5191



192-3



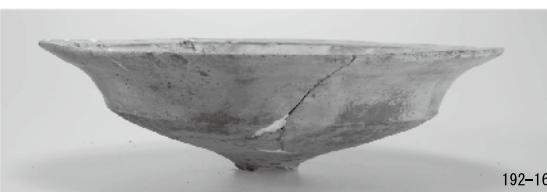
SK5200



192-15



192-14

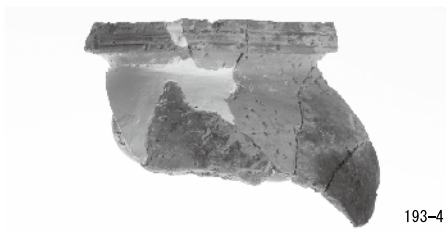


192-16

SK5200



193-7



193-4



193-6

SK5201



193-8

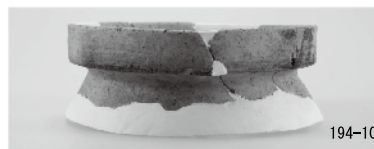


193-15



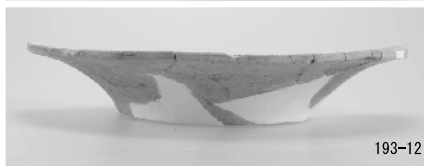
194-2

SK5205

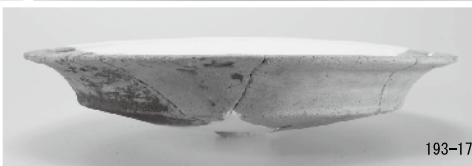


194-10

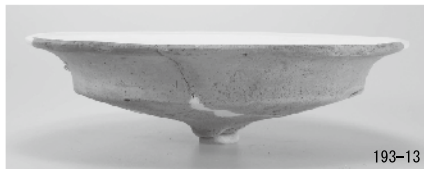
SK5215



193-12

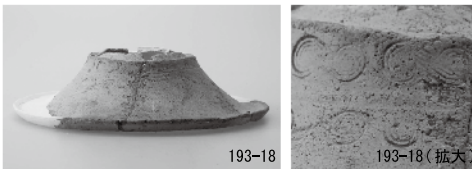


193-17



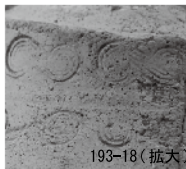
193-13

SK5202

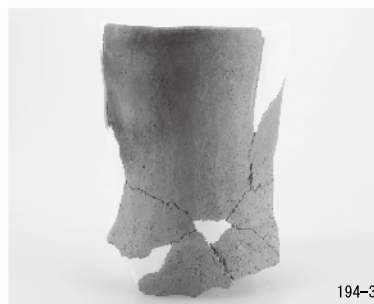


193-18

SK5203

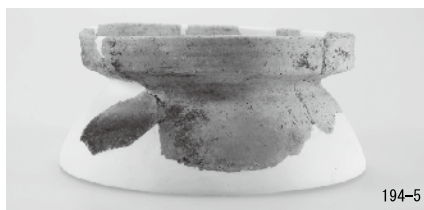


193-18 (拡大)

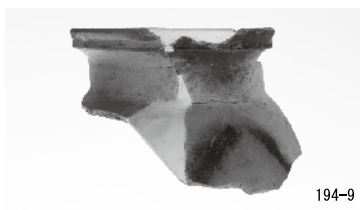


194-3

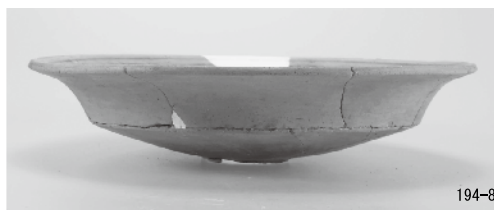
SK5207



194-5



194-9

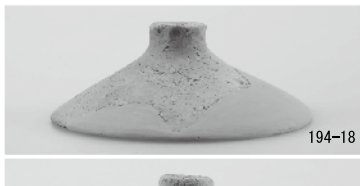


194-8

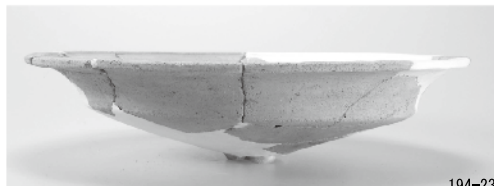
SK5210



194-12



194-18



194-23

SK5228



194-17



194-19



194-25

SK5225



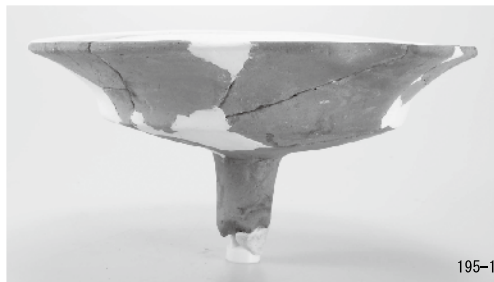
194-16



194-15

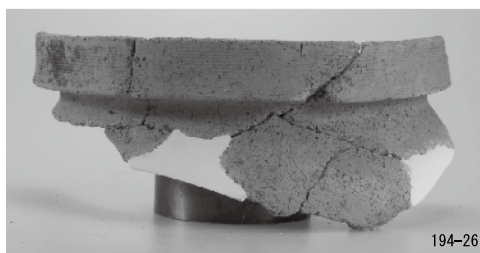


SK5216



195-1

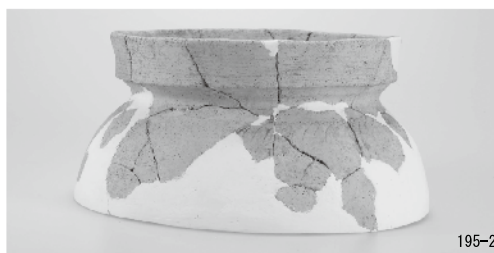
SK5232



194-26



194-29



195-2

SK5231

SK5239



194-24



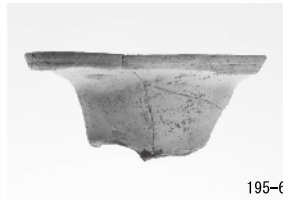
195-9



195-7



195-5

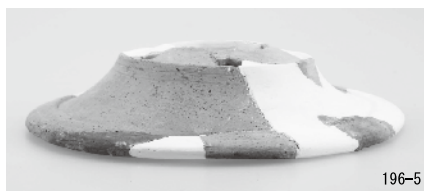


195-6

SK5226

SK5235

図版第八〇 遺物 土器（中地区土坑）

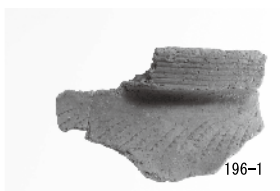


196-5



196-6

SK5242



196-1



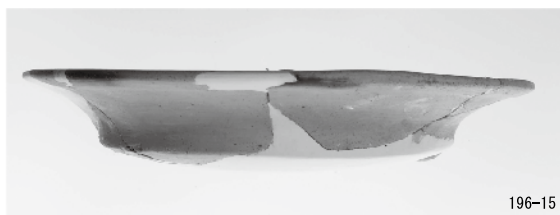
196-2



196-3



196-4



196-15

SK5245



196-11

SK5244



196-8



195-10

SK5243



196-14

SK5244



196-7

SK5244



196-13



197-1

SK5246



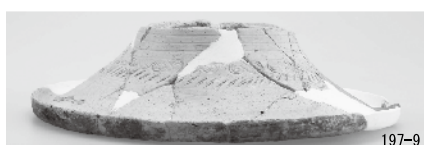
197-4



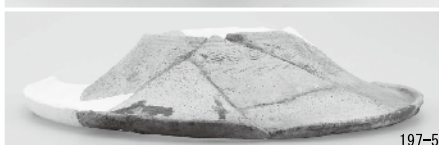
197-25



197-23



197-9



197-5



197-9 (拡大)

SK5256



197-5 (拡大)

SK5252

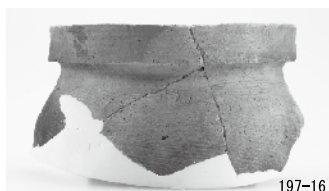


197-22

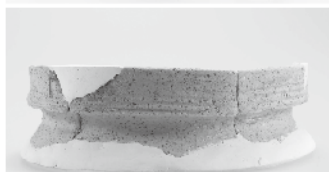
Sk5257



197-19



197-16



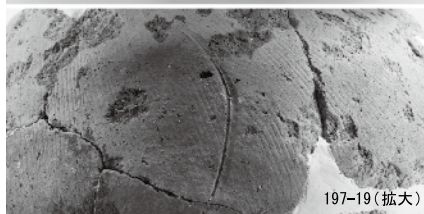
197-12



197-17



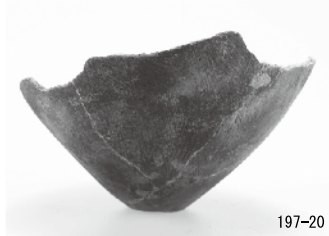
SK5260



197-19 (拡大)



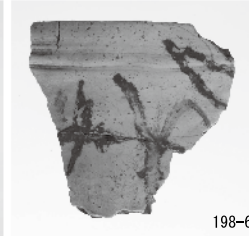
197-11



197-20



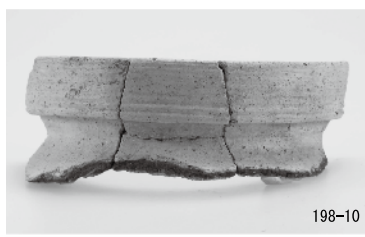
198-5



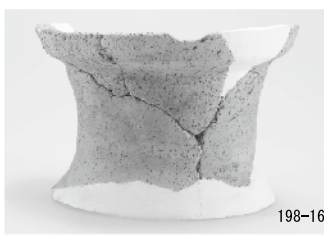
198-6

SK5257

SK5272



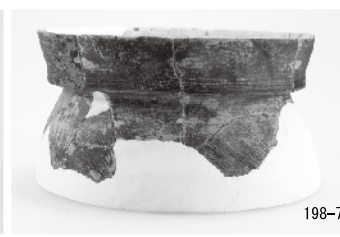
198-10



198-16

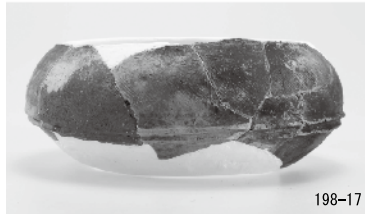


198-19



198-7

SK5269



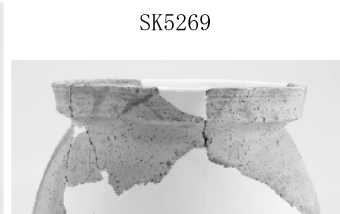
198-17



198-18

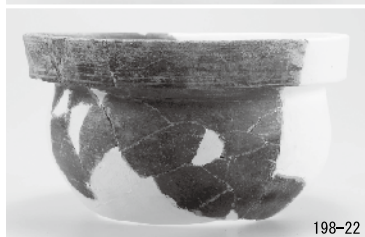


198-20



198-4

SK5271



198-22



198-18



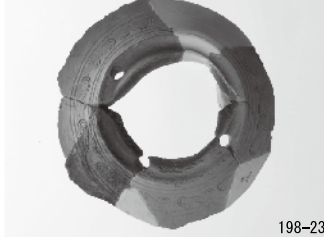
198-26



198-1



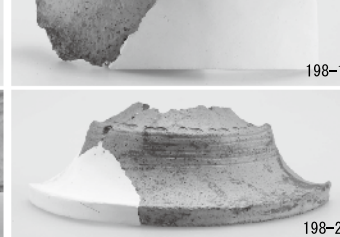
198-21



198-23



198-26 (拡大)

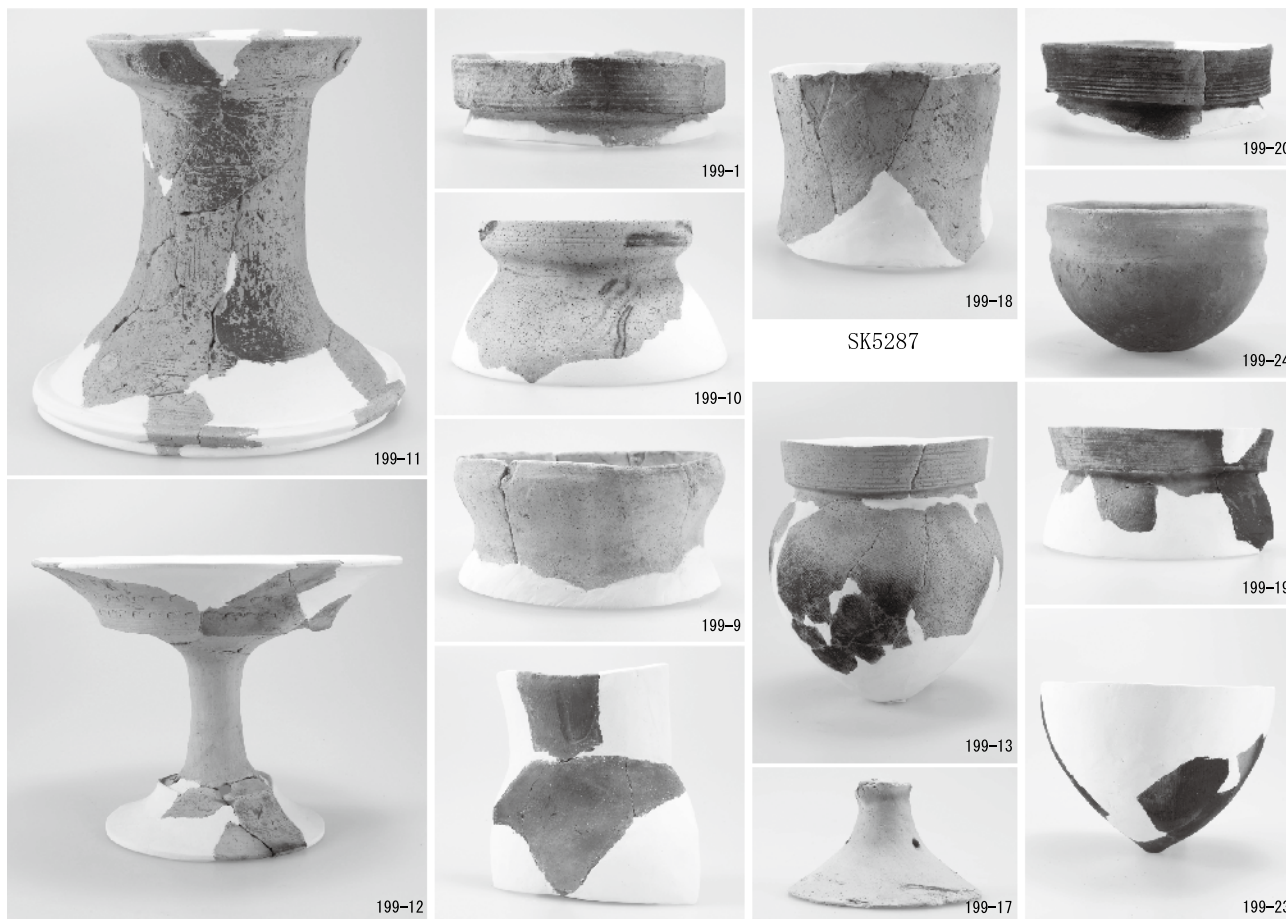


198-2

SK5266

SK5265

図版第八二 遺物 土器（中地区土坑）



199-11

199-1

199-20

199-10

199-18

199-24

199-9

199-19

199-12

199-13

199-17

199-23

SK5282

SK5283

SK5288



200-11

200-14

201-8

SK5296



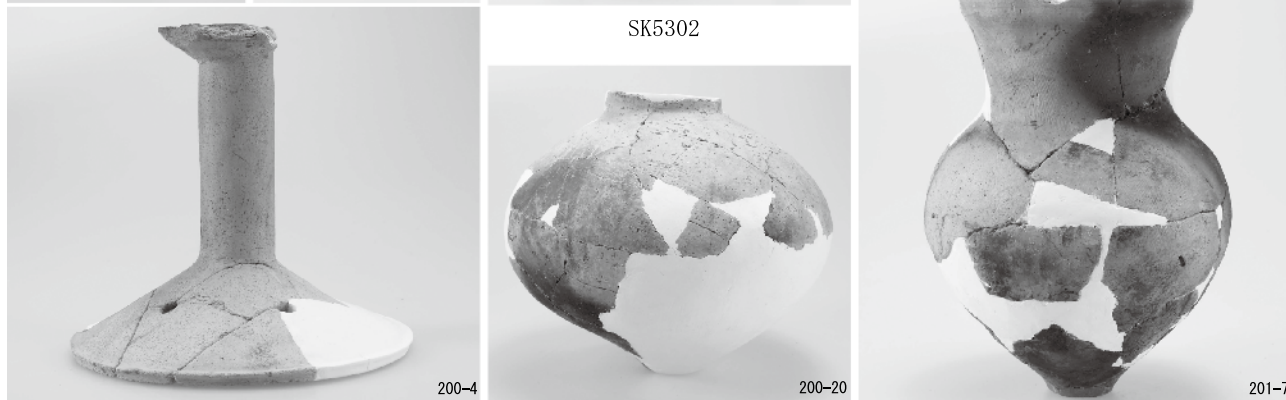
200-2

200-3

200-7

201-6

SK5302



200-4

200-20

201-7

SK5290

SK5306

SK5308





SK5314

202-4



SK5325

202-11



SK5327

203-2



SK5324

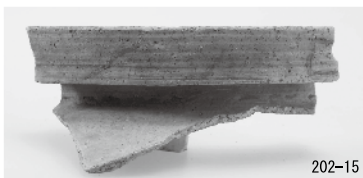
202-7



202-13



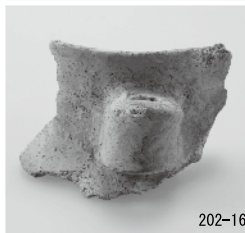
202-18



202-15



202-20



202-16



202-19



202-18(拡大)

SK5326

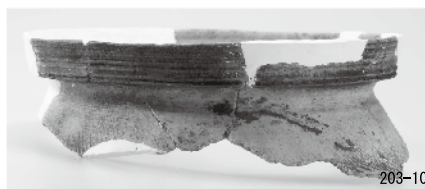
SK5326



203-16



203-13



203-10



203-18



203-21



203-19



203-17



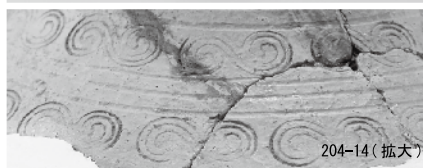
203-15

SK5336

図版第八四 遺物 土器（中地区土坑）



204-14



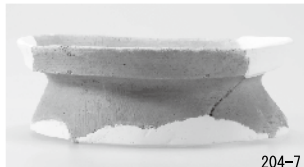
204-14 (拡大)



204-13



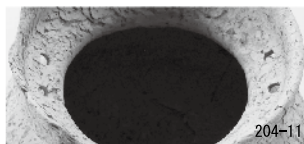
204-8



204-7



204-11



204-11



204-10

SK5339



204-20

SK5342



204-23



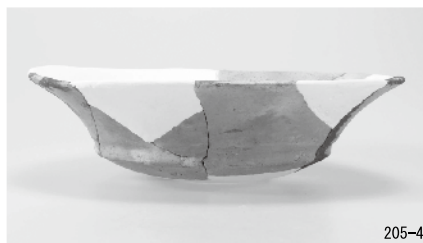
204-22



204-21

SK5339

SK5346



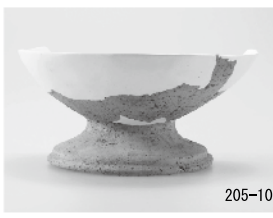
205-4

SK5351



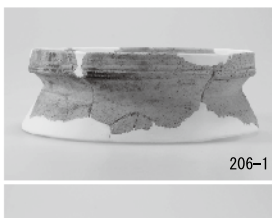
205-7

SK5352



205-10

SK5355



206-1



206-8



205-5

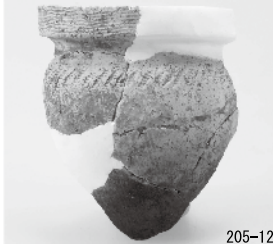
SK5352



205-6



205-8



205-12



205-13

SK5359



206-7

SK5360



206-12



206-13



206-15



206-21

SK5361

SK5365

SK5367



207-6



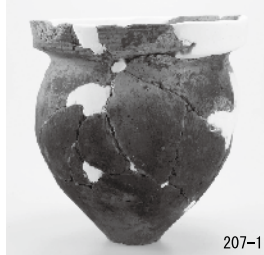
207-27



207-32



207-33



207-1



207-27 (拡大)

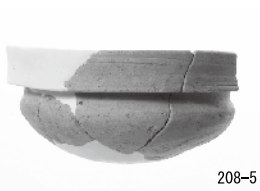
SK5386

SK5380

SK5385



208-3



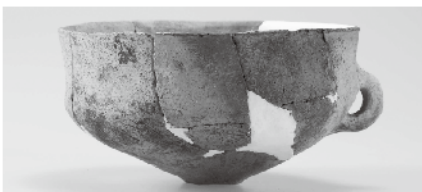
208-5

SK5390

SK5394



209-2



SD1053



210-9



209-3

SD1052



210-5

SD1054



210-8

SD1054

図版第八六 遺物 土器（中地区溝）



SD1056



SD1062



210-13



SD1069



210-18-19



210-20



210-20(拡大)

SD1068



210-22

SD1070



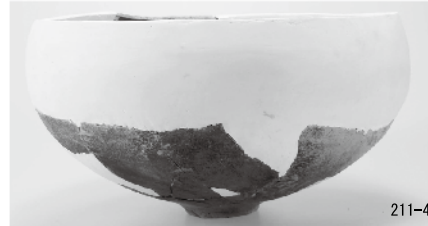
211-4



211-7



211-8



211-4



211-10



211-8(拡大)

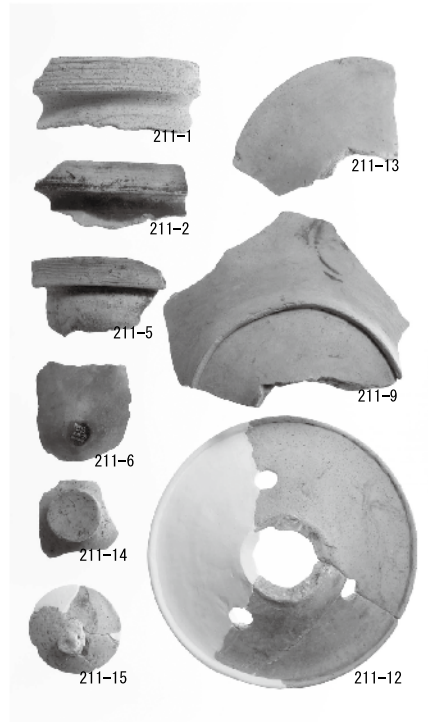


211-11



211-10(拡大)

SD1082



211-1

211-2

211-5

211-6

211-14

211-15

211-13

211-9

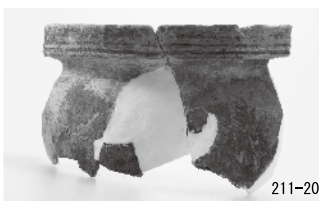
211-12

SD1082



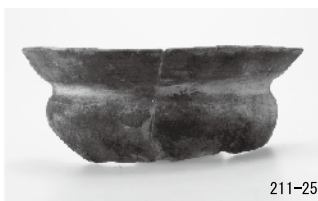
211-17

SD1085



211-20

SD1086

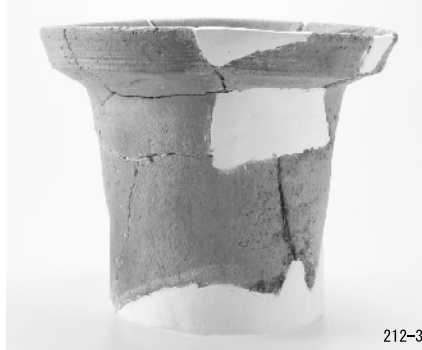
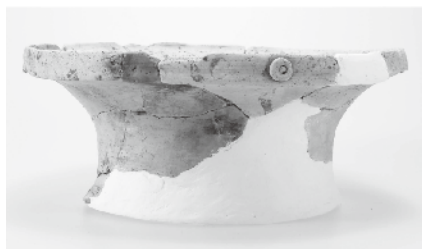


211-25

SD1088



211-28



212-3

SD1091



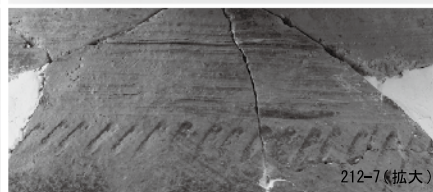
212-6



212-7



212-8



212-7(拡大)

SD1092

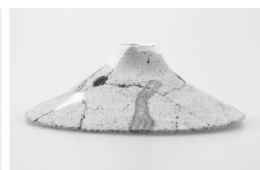


212-9



212-10

SD1093



SD1100



212-15

SD1099



212-11

SD1095



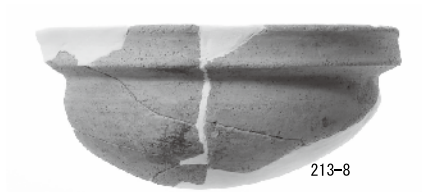
213-4



213-11



213-1

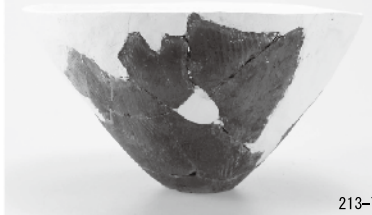


213-8



213-10

SD1101



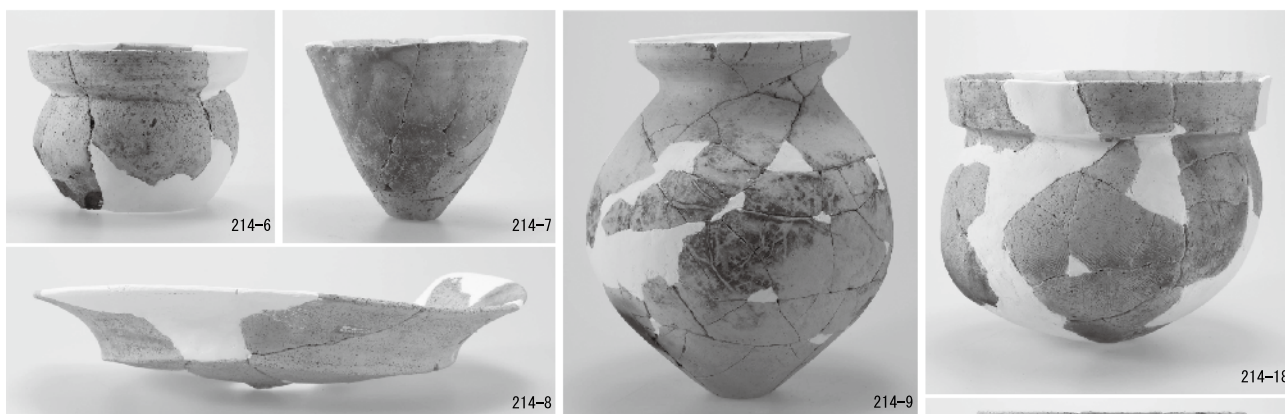
213-7



図版第八八 遺物 土器（中地区溝）

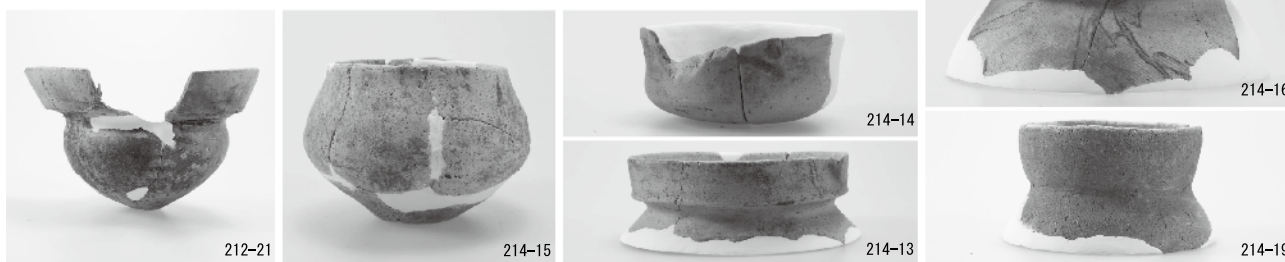


SD1101



SD1102

SD1107

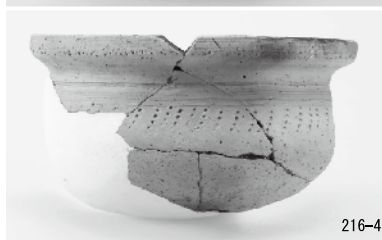
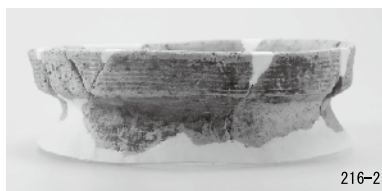


SD1117

SD1113

SD1110

SD1111



SD1118



SD1121

SD1122



SD1128



SD1129



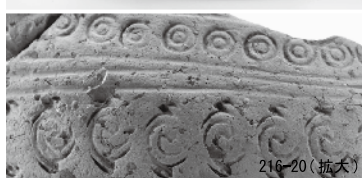
216-20



SD1128

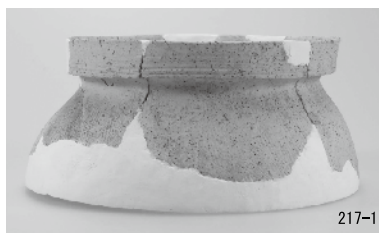


SD1128

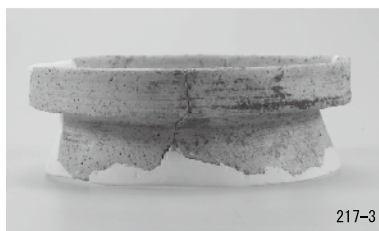


SD1128

図版第九〇 遺物 土器（中地区その他の遺構）



C96 区 SP103



B100 区 SP107



B108 区 SP105



B98 区 SP100



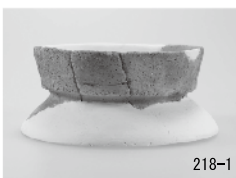
C106 区 SP101



A116 区 SP102



C100 区 SP102



218-1



218-2



218-4

川4 集中区①



218-5



218-9



218-10



218-11

川4 集中区②



218-6



218-12



218-15



218-13



218-14

川4 集中区③



218-7

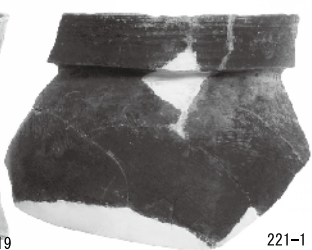
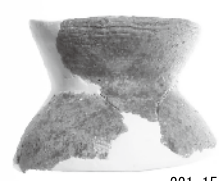
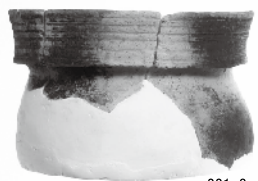
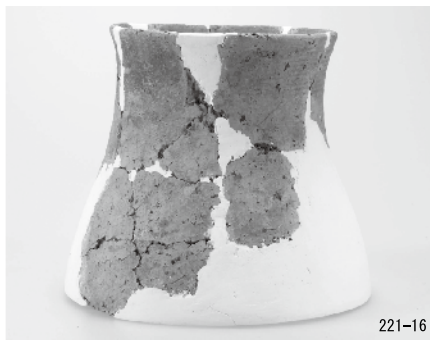
川4 集中区②





図版第九二 遺物

土器（中地区その他の遺構）





图版第九四 遺物 土器(中地区土器集中区)



224-1



224-2



224-5

A82 区集中区



224-13



224-4



224-3



224-14

A82 区集中区

C·D93·94 区集中区



224-11

C95 区集中区



224-9



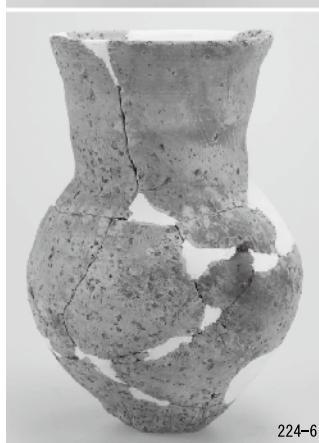
225-1



225-2



225-3



224-6

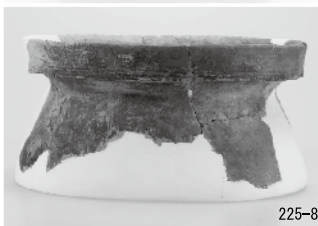
A·B95·96 区集中区



225-4



225-6



225-8

85·86 区谷



225-5



図版第九六 遺物 土器（中地区土器集中区）





227-47



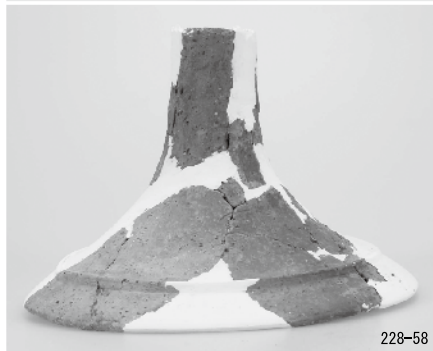
227-48



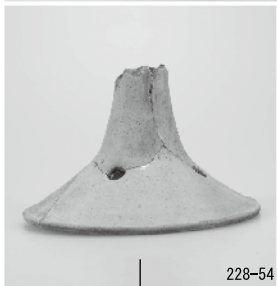
228-57



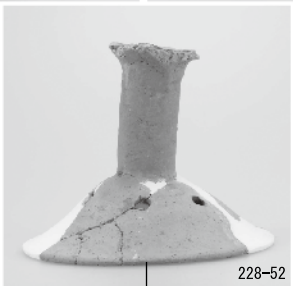
228-55



228-58



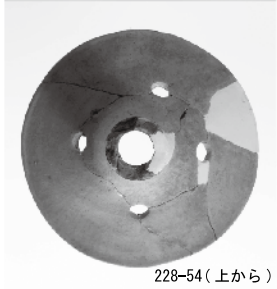
228-54



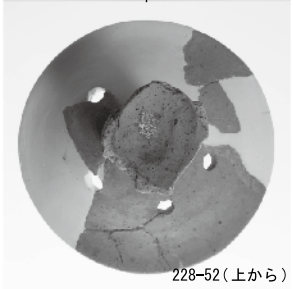
228-52



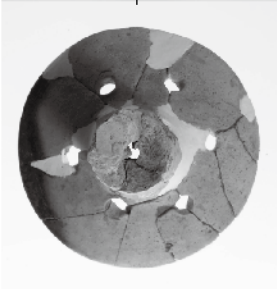
228-51



228-54 (上から)



228-52 (上から)



228-59



228-53



228-61

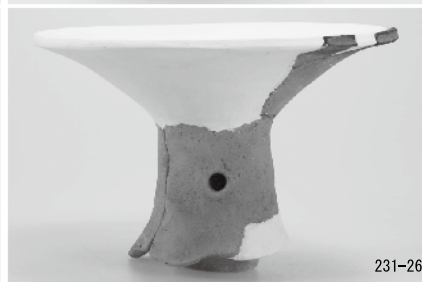
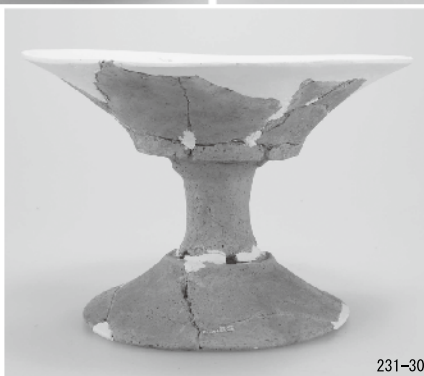
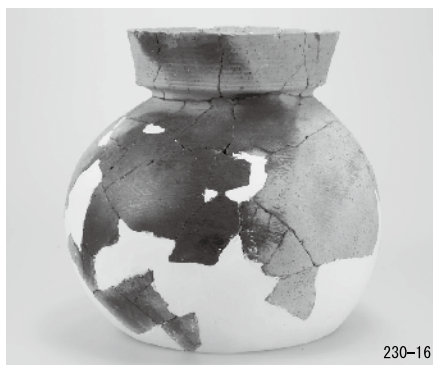


228-60

図版第九八 遺物 土器（中地区包含層）

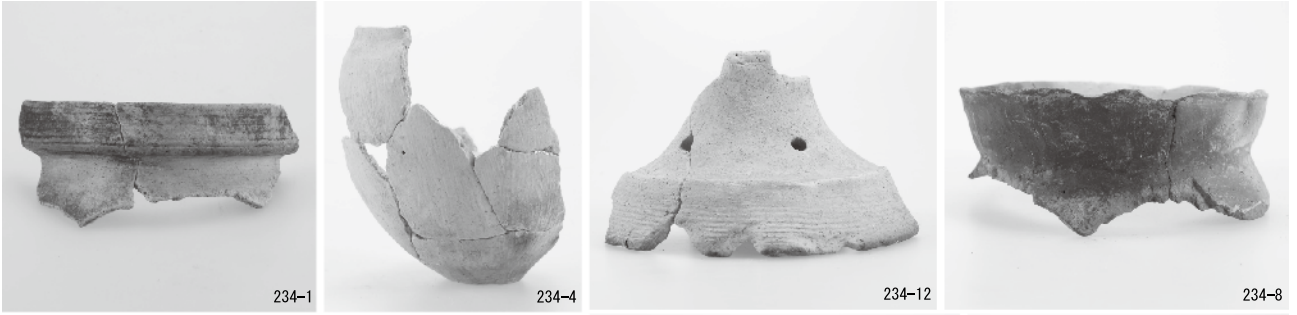






図版第一〇〇 遺物 土器（中地区包含層）





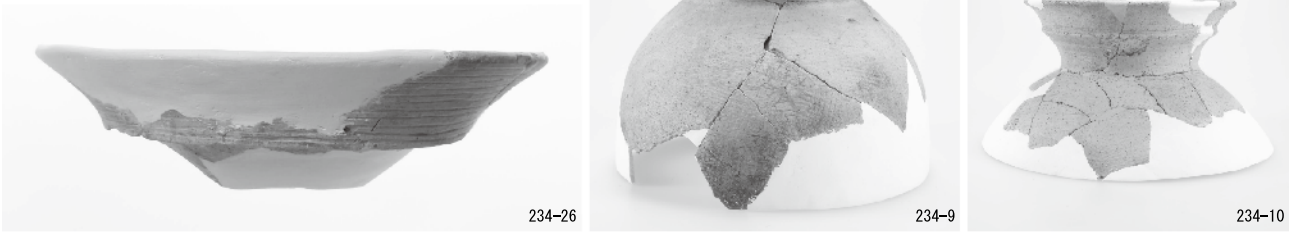
234-1

234-4

234-12

234-8

SI39



234-26

234-9

234-10

SI42

SI40



234-24

233-4

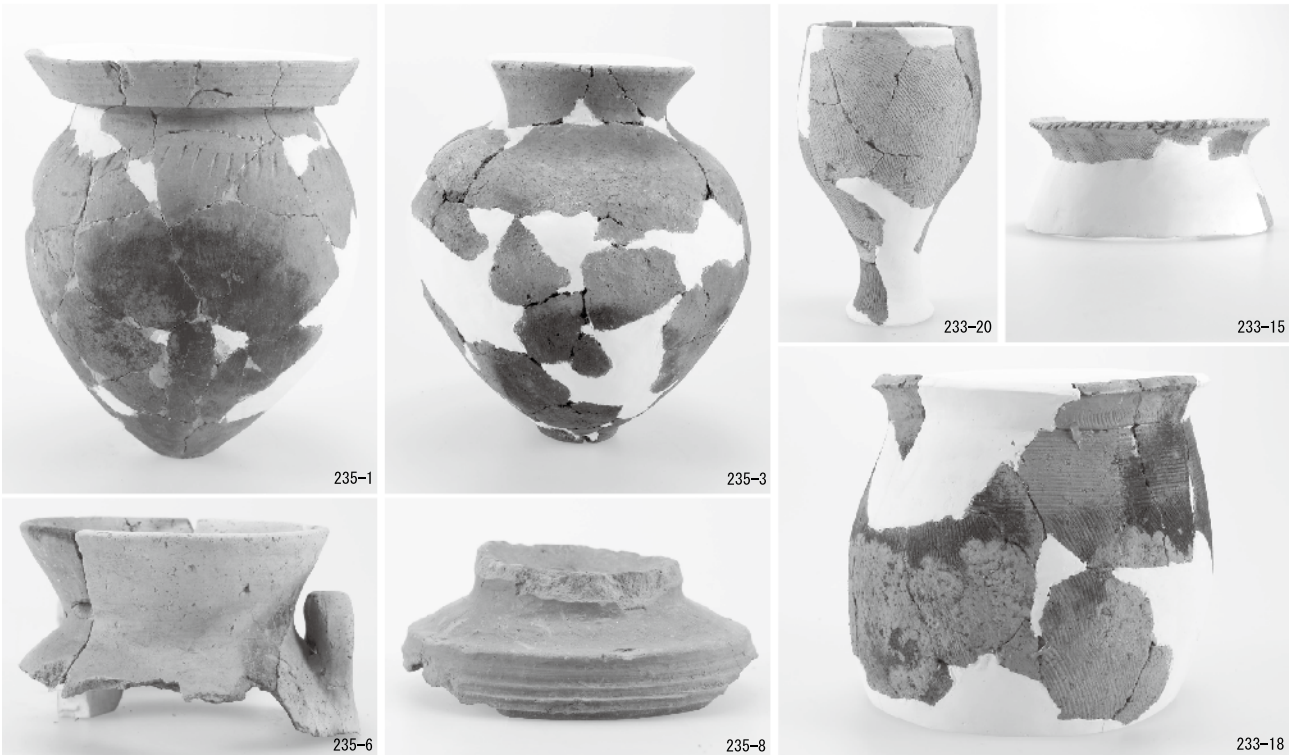
233-1

233-11

SI42

SI41

SI46



235-1

235-3

233-20

233-15

235-6

235-8

233-18

SI45

SI47

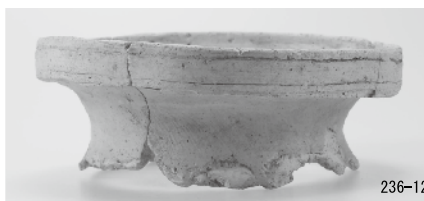
図版第一〇二 遺物 土器（西地区住居・土坑）



235-12



236-4



236-12



236-6



236-16

SK5416

SK5422



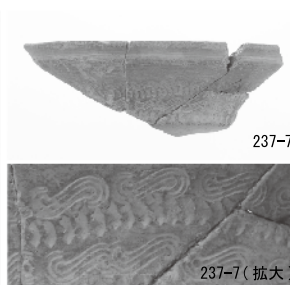
235-13



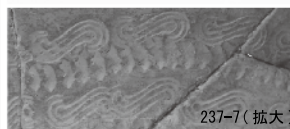
237-1



237-6



237-7



237-7(拡大)

SI49

SK5427

SK5432

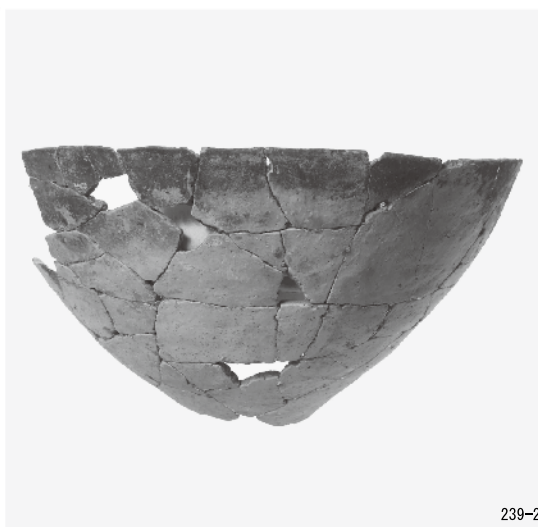
SK5434



237-9



236-22



239-2

SK5437

SK5470

SK5459



238-3



236-20

SK5450

SK1264



239-1



SK5412



236-25

SK5459

SK5474



238-2

SK5450



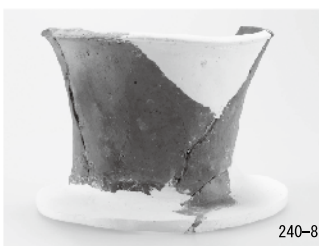
239-3

SK5459



240-5

SD1136



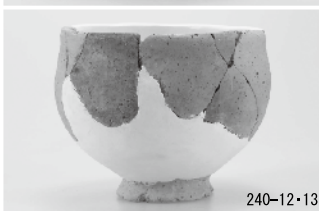
240-8



241-12



240-15



240-12・13



241-9



241-7

SD1159



240-7

SD1155



241-4

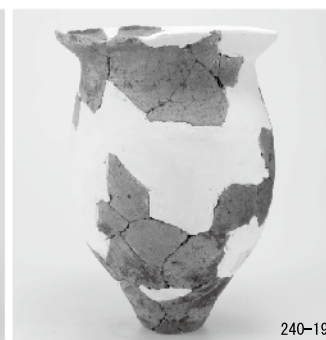


241-5



241-6

SD1157



240-19



240-18

SD1158



SD1165

図版第一〇四 遺物 土器（西地区包含層）



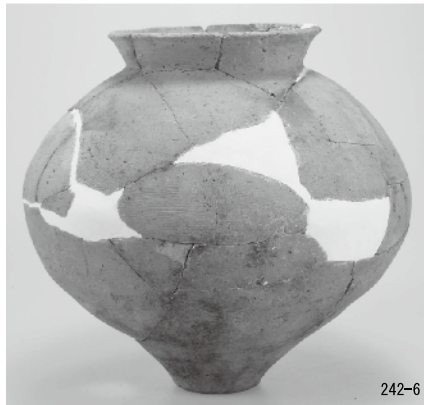
242-1



242-5



243-7



242-6



242-4

E144 区集中区



243-22



243-3



244-34



244-35



244-35 (上から)



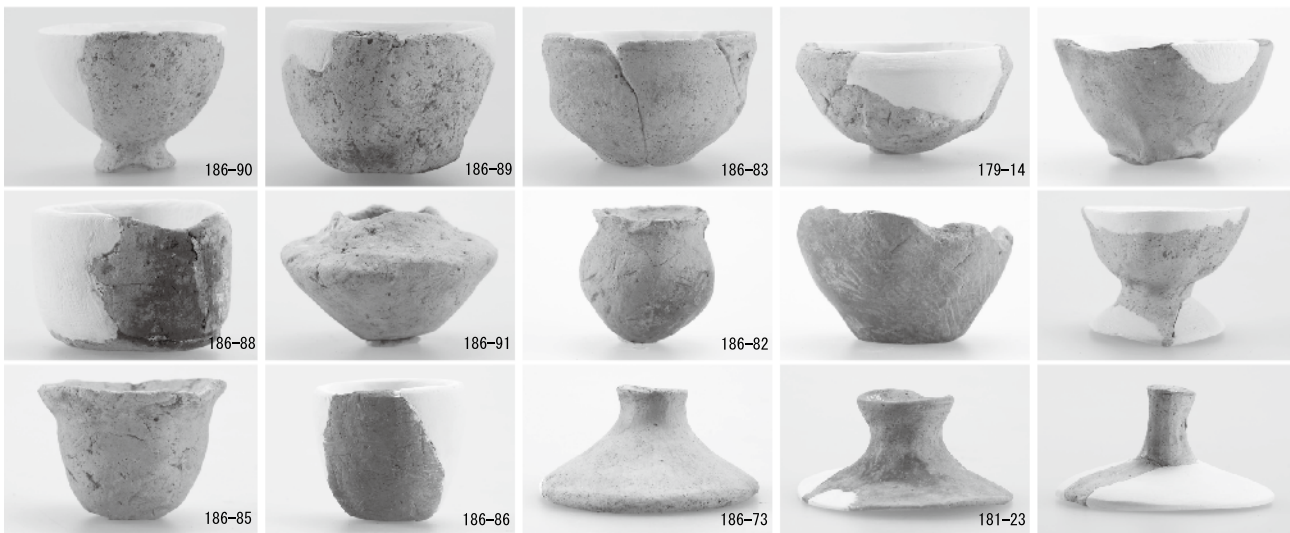
244-35 (拡大)



244-29・30



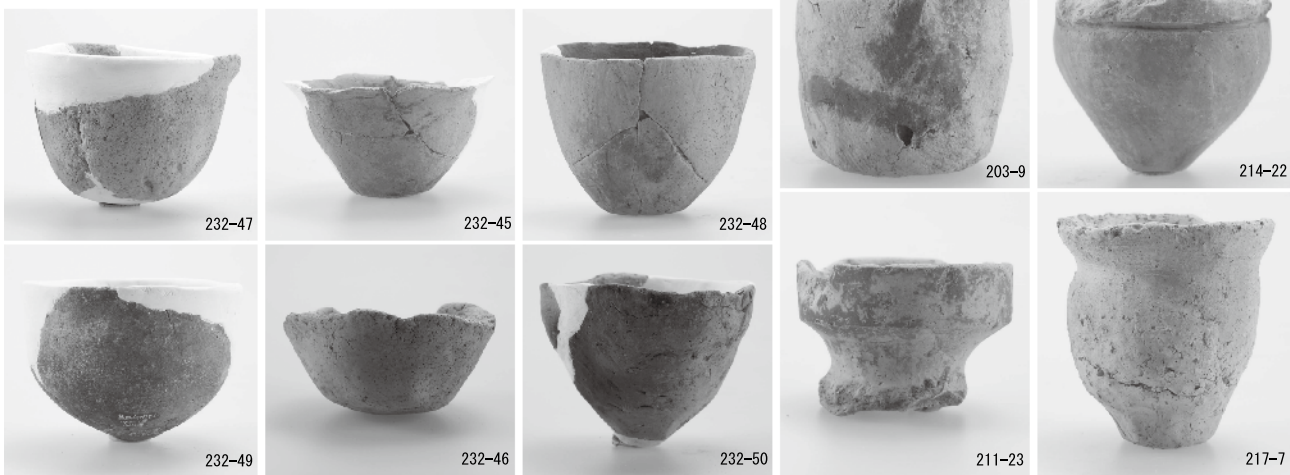
東地区遺構出土



東地区包含層出土



中地区遺構出土



中地区包含層出土

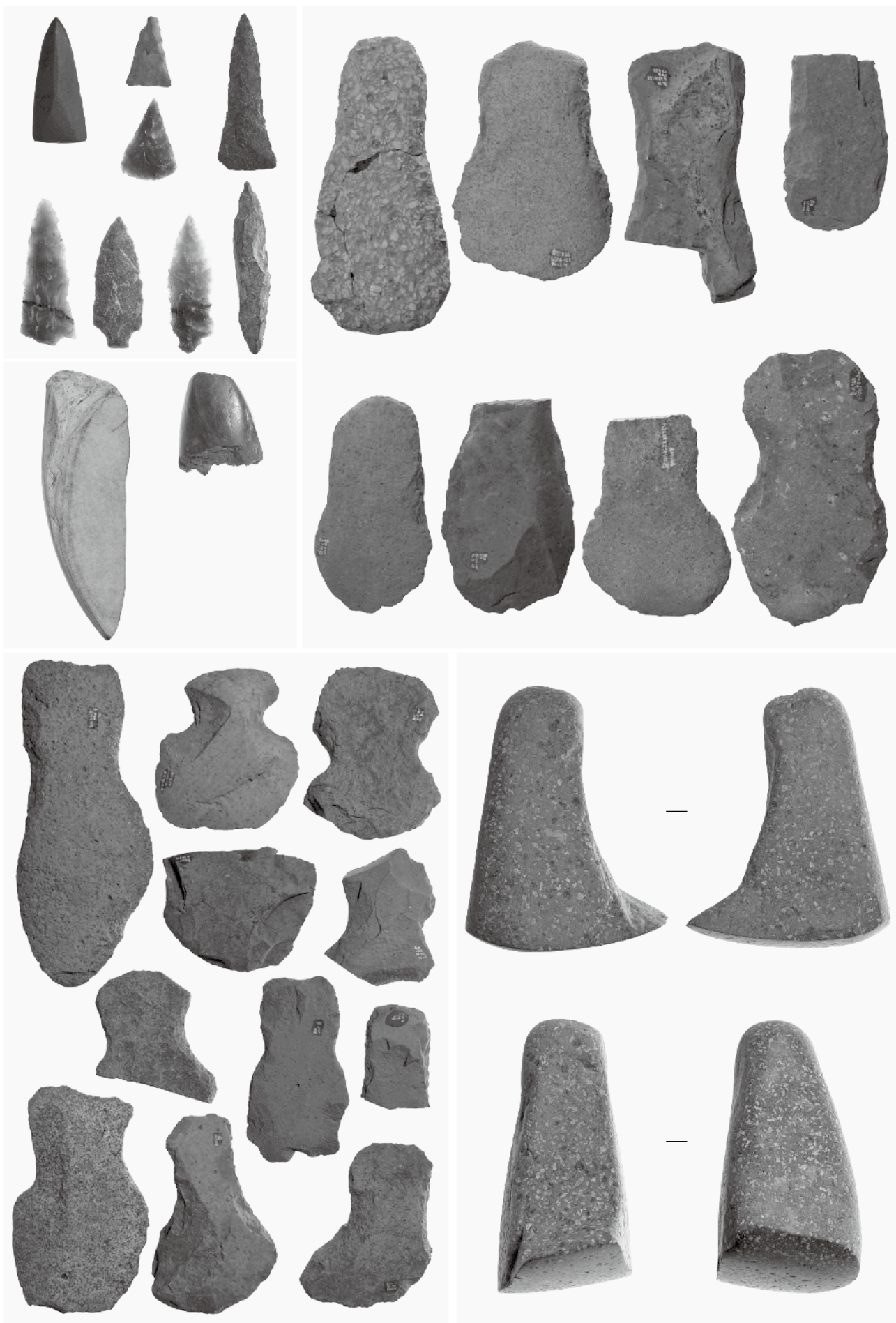
中地区遺構出土



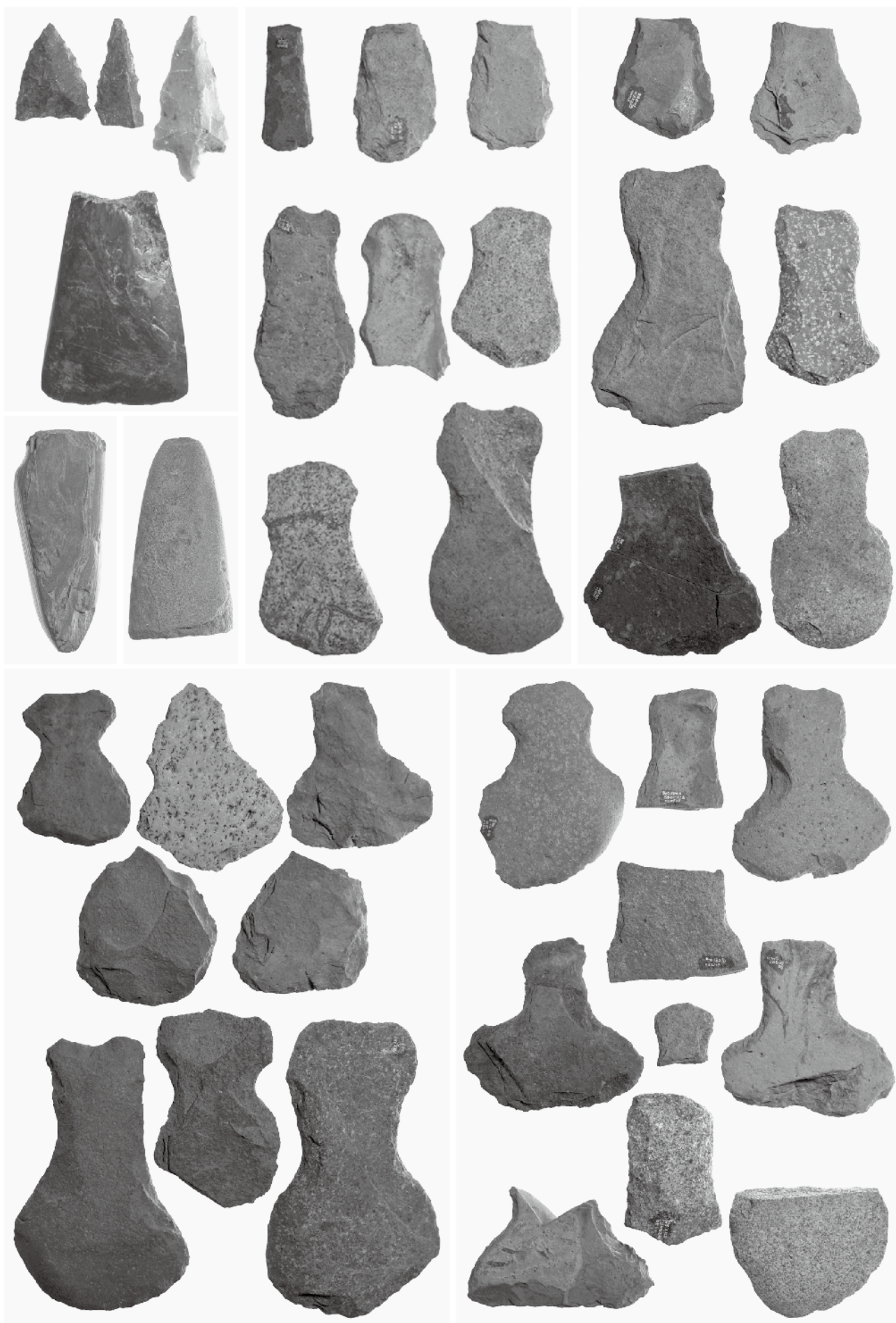
西地区遺構出土

川5(中地区)出土

図版第一〇六 遺物 石器（東地区）

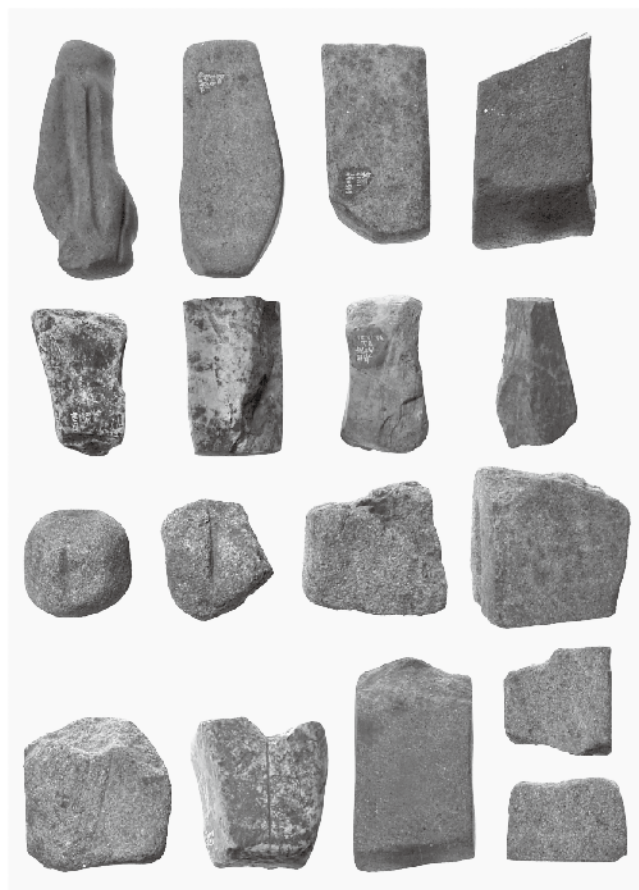






図版第一〇八 遺物 石器（西地区）





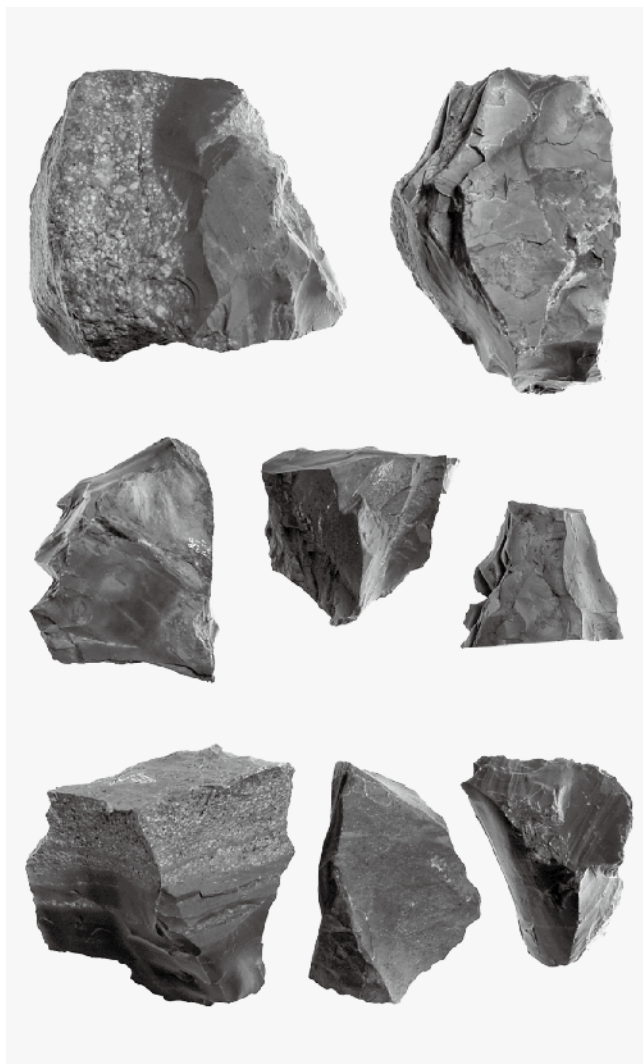
東地区出土



中地区出土



西地区出土



原石～荒割段階

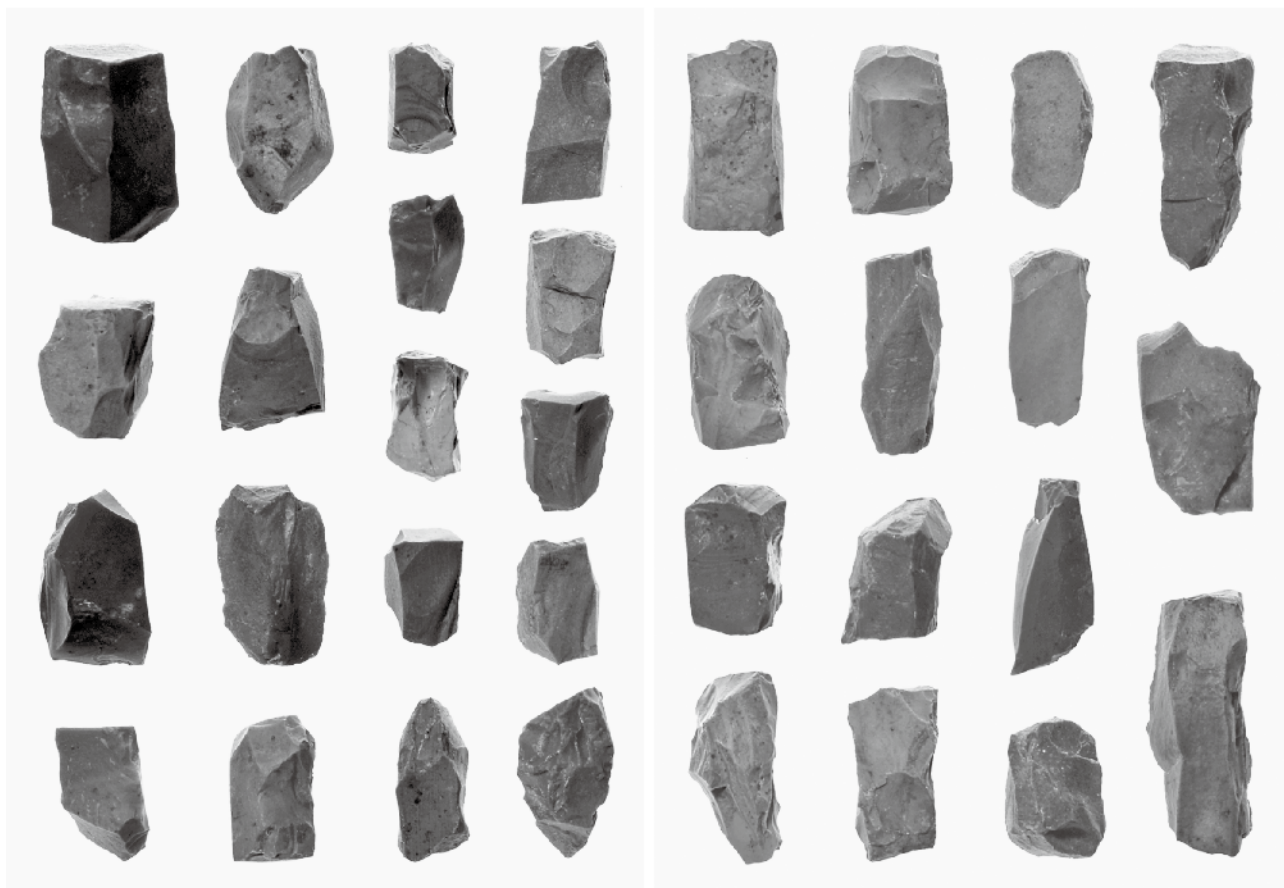


荒割段階



角柱状未成品（大）

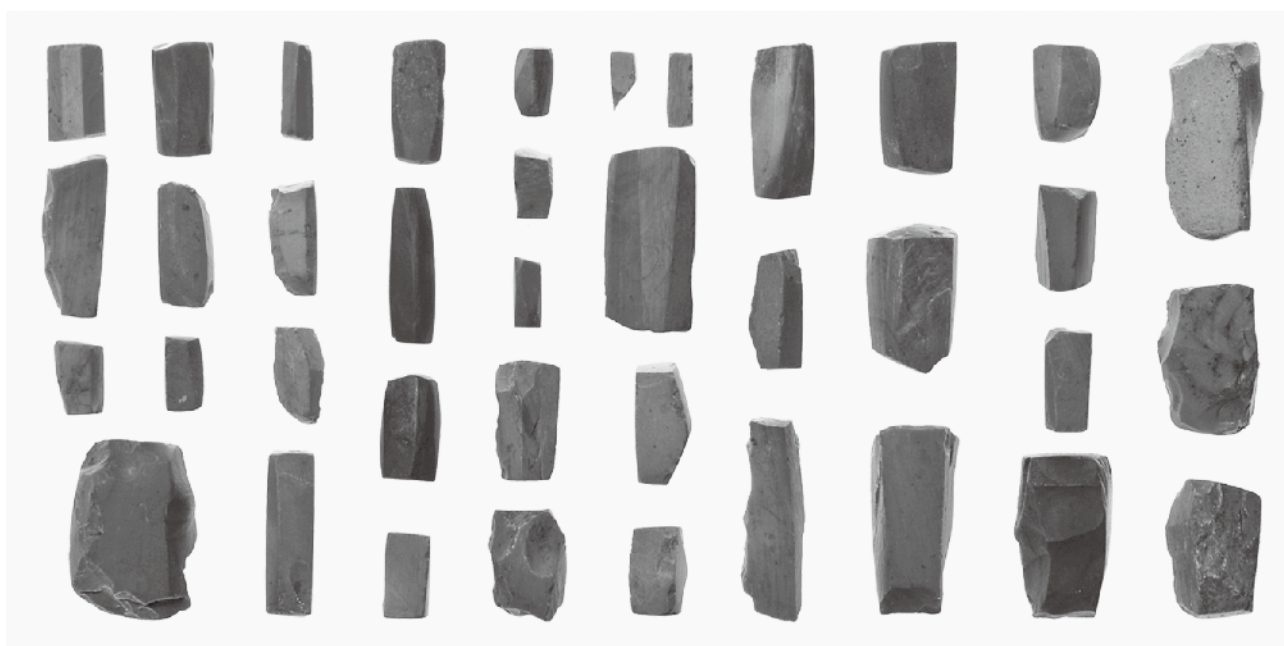




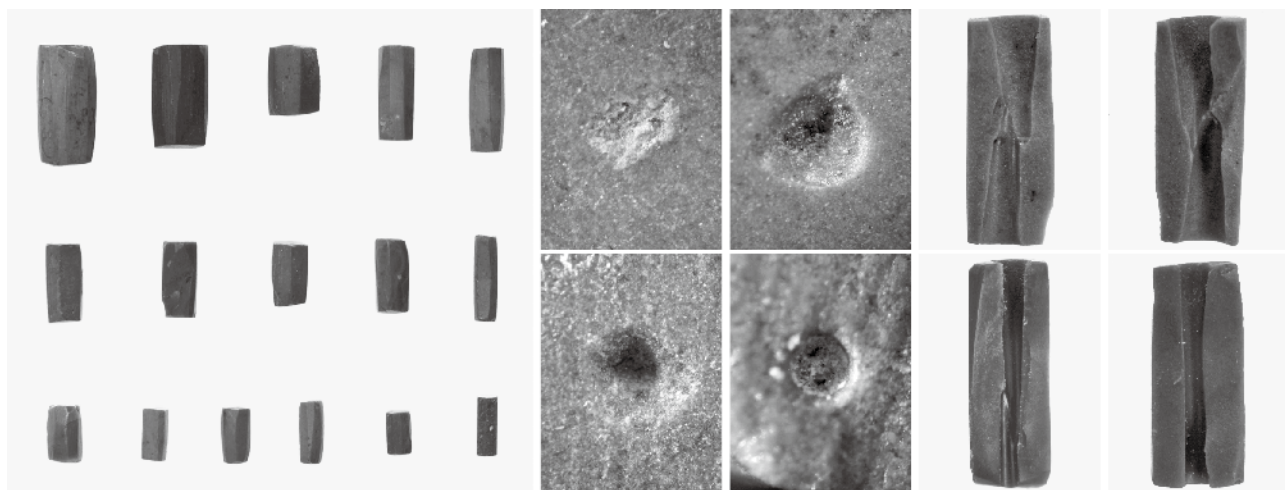
角柱状未成品（大）



角柱状未成品（小）



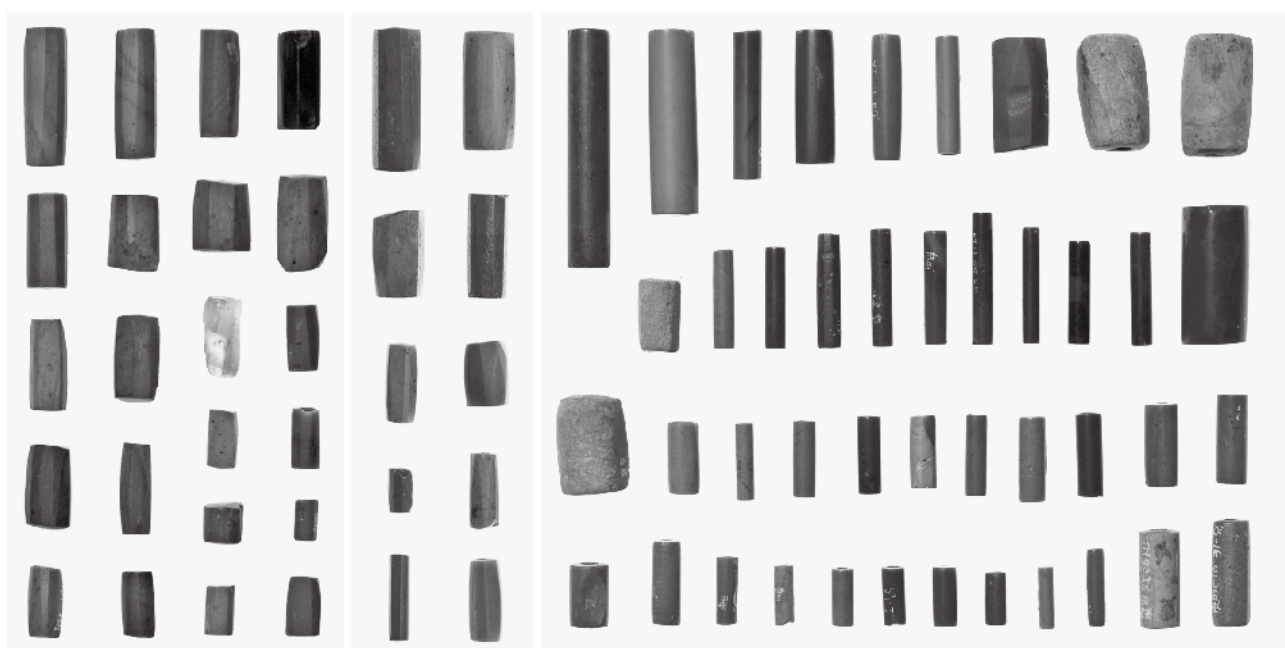
研磨未成品



穿孔直前

穿孔準備面

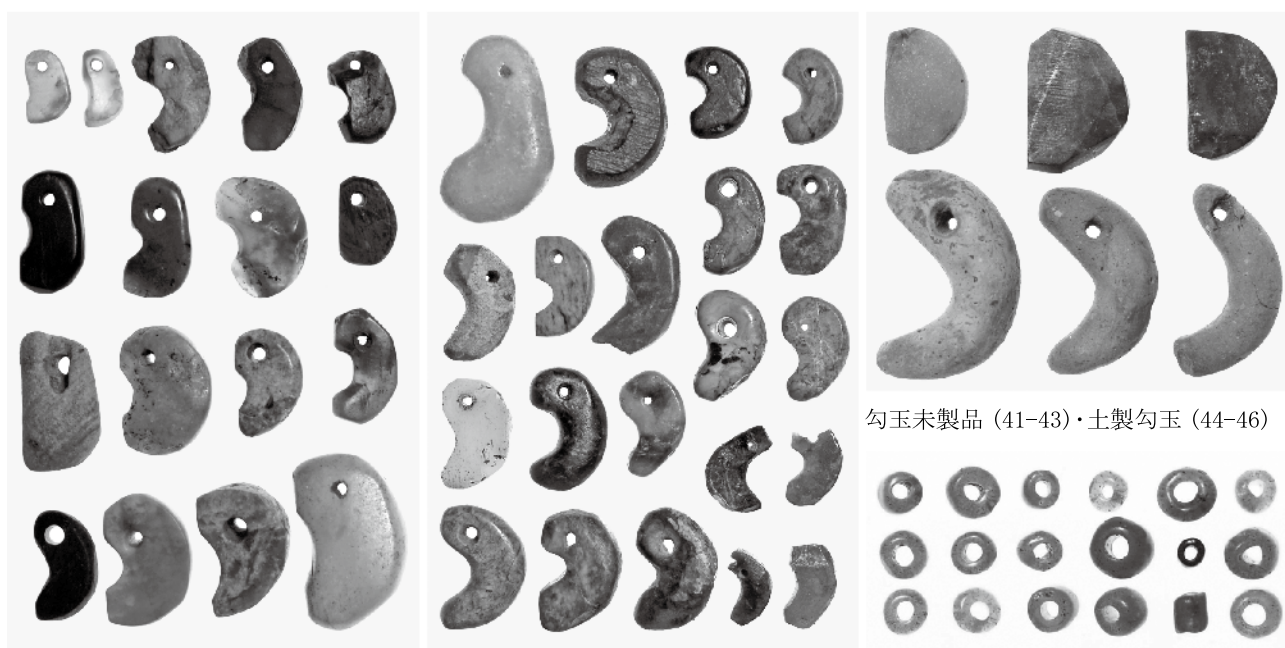
穿孔断面



穿孔初期

仕上げ直前

管玉



勾玉未製品 (41-43)・土製勾玉 (44-46)

勾玉

ガラス小玉

