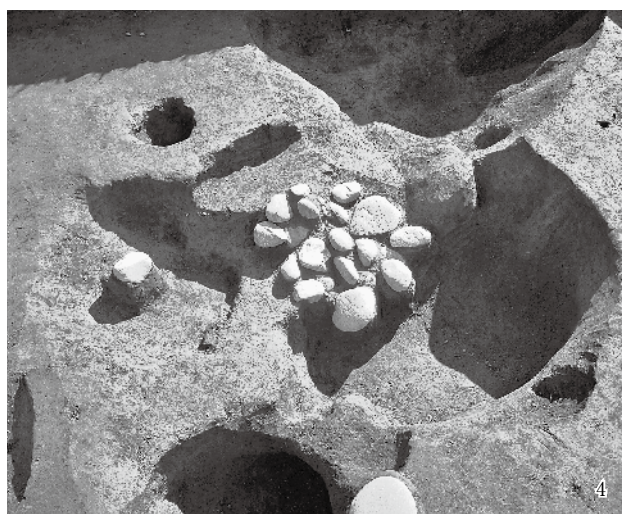
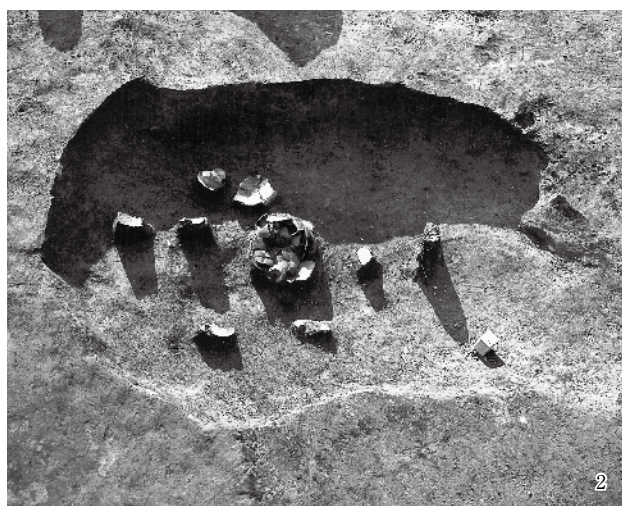
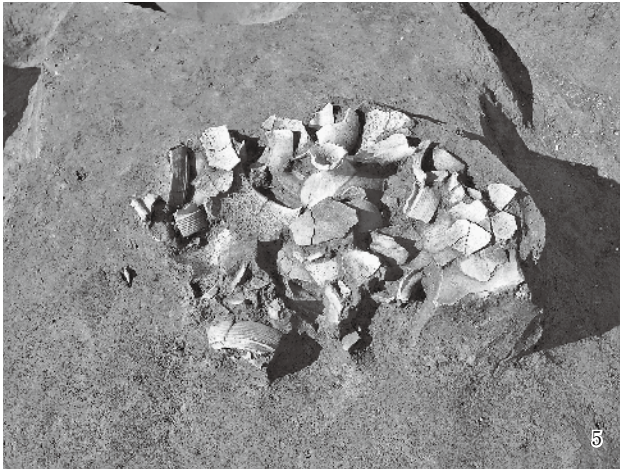
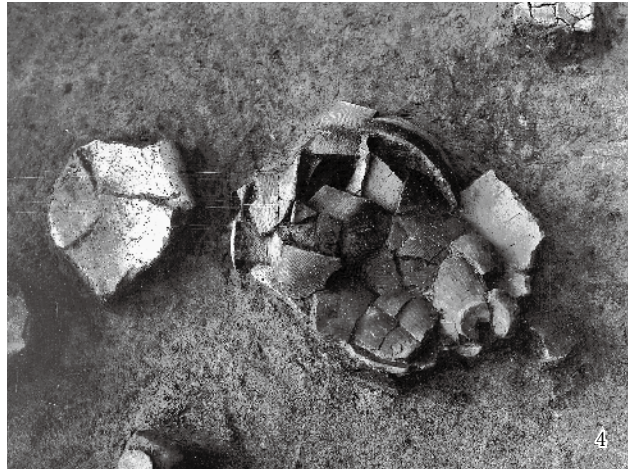
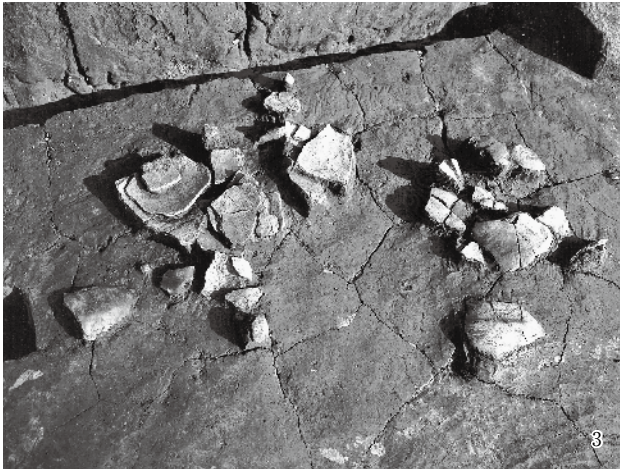


図版第三二 遺構 (下層西地区)

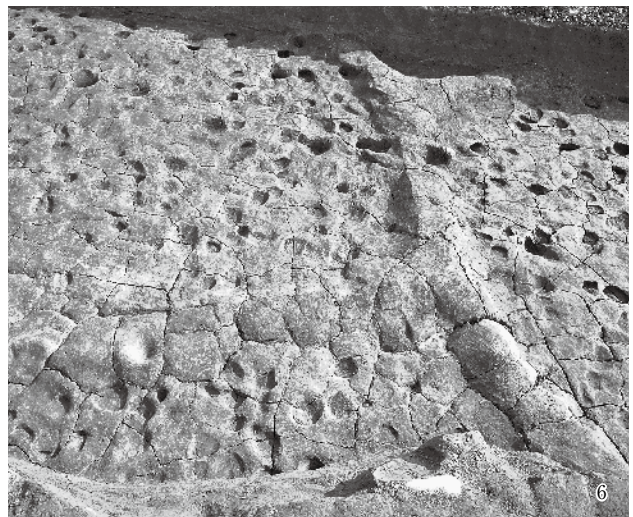
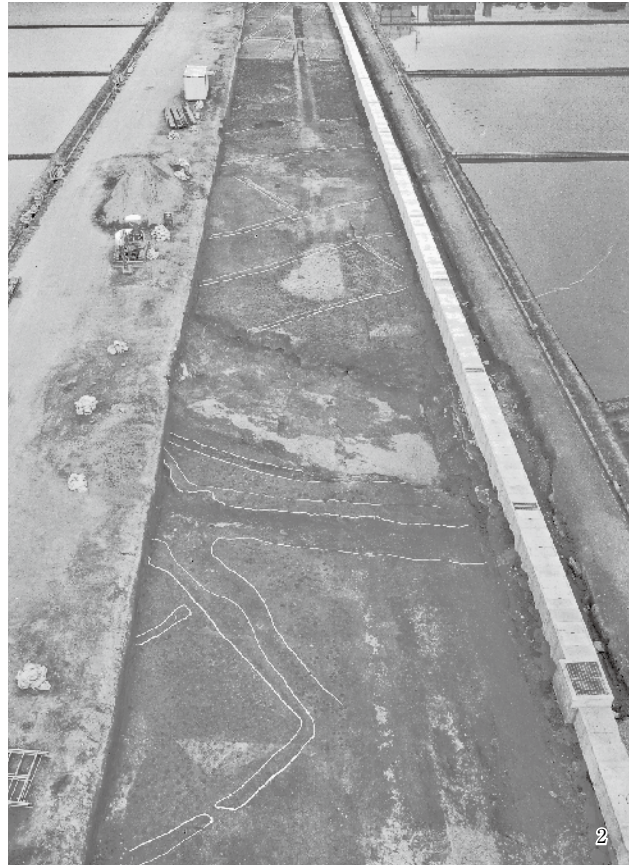
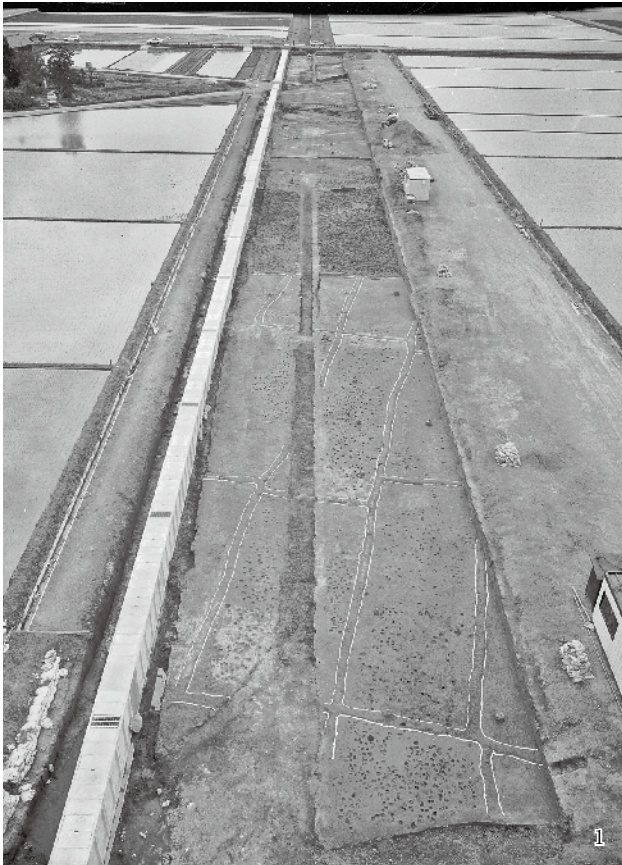


1.SK5442、2.SK5474、3.SK5540、4.SK5429、5.SK5472、6.SK5456



1.E141区集中区甕、2.E141区集中区長頸壺、3.T150区土器、4.土器出土状況、5.A126土器、6.SK5450土器棺、7.SK5459土器棺、8.SK5459断面

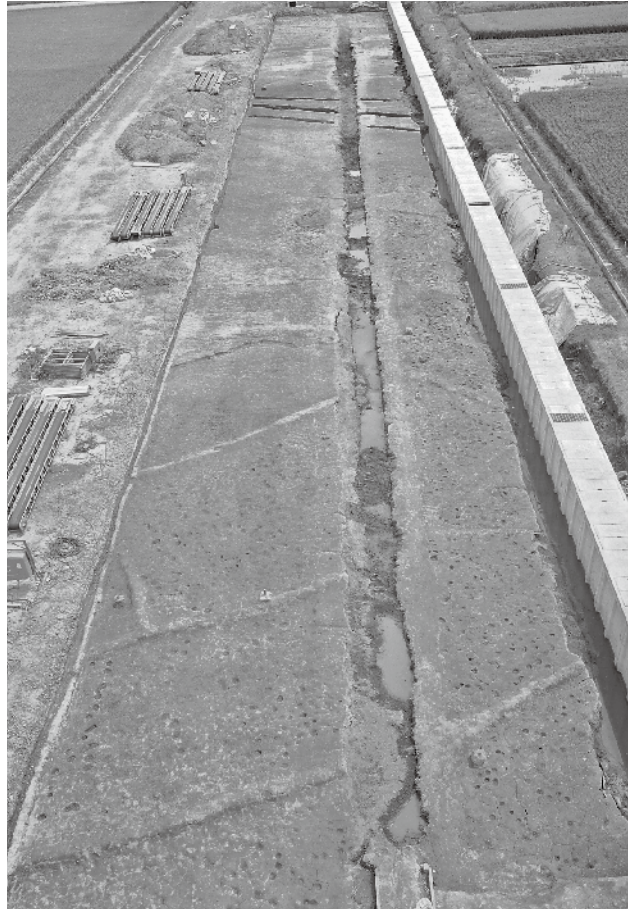
図版第三四 遺構（中層水田面）



1.30~72区全景（東から）、2.30~72区全景（西から）、3.40~48区緩衝地区、4.緩衝地区土層断面、5.川2全景（北から）、6.畦と馬蹄跡



1.75～96区全景（東から）



2.75～96区全景（西から）

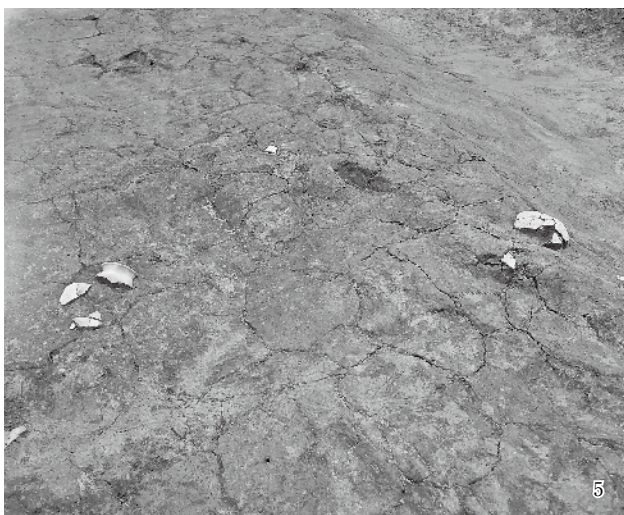


3.96～121区全景（東から）

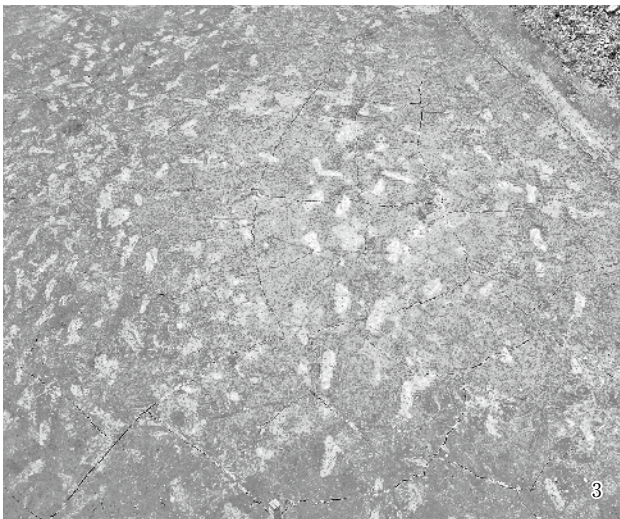
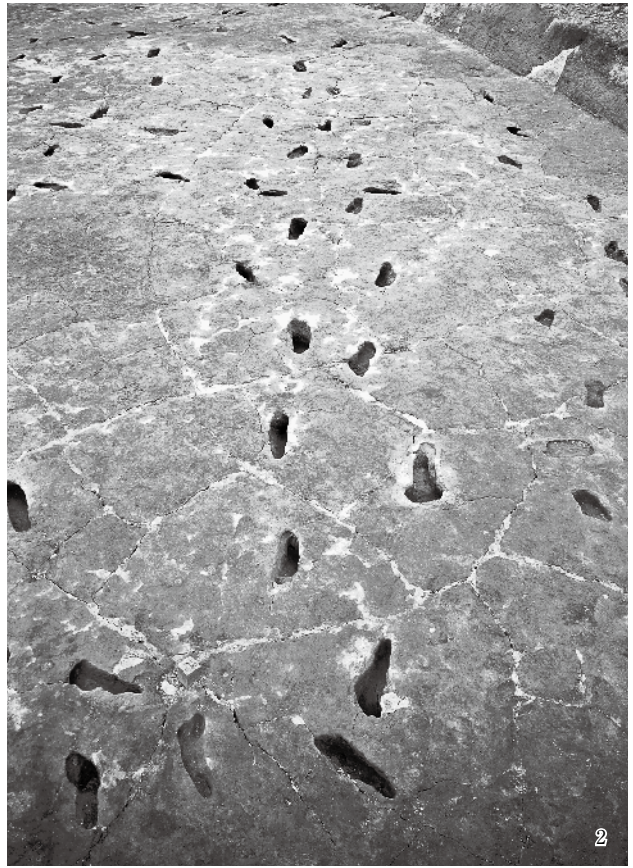


4.96～121区全景（西から）

図版第三六 遺構（中層水田面）



1.123～142区全景（西から）、2.143～154区全景(北東から)、3.SD1134上層、4.SD1134上層取水口、5.C137土器出土状況、6.取水口？

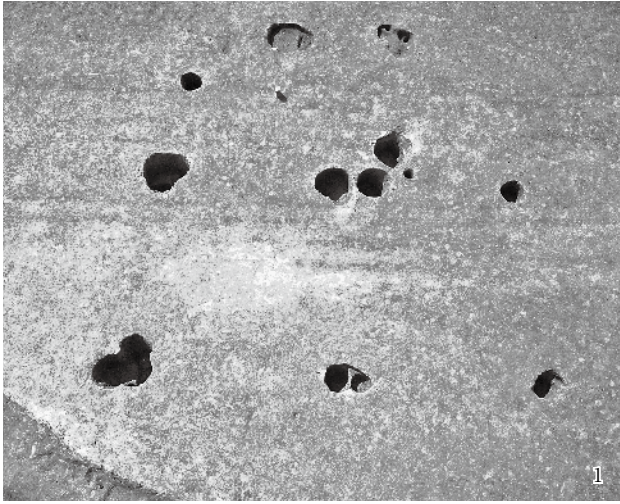


1.足跡集中地区、2.歩行状況、3.検出状況、4.集中区拡大、5.足跡拡大、6.足跡拡大

図版第三八 遺構（上層中世）



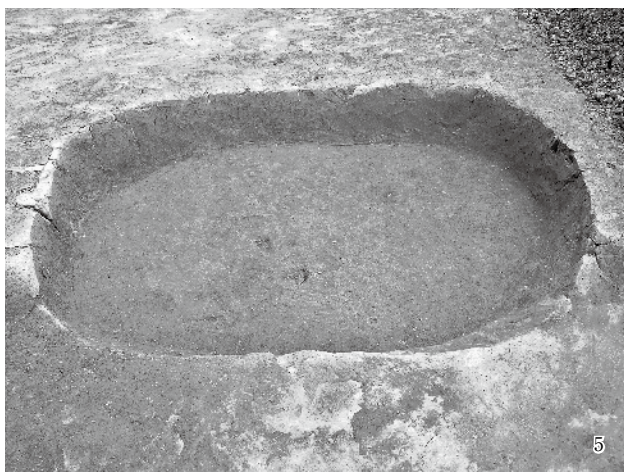
1.1～27区北半部全景（西から）、2.1～27区南半部全景（東から）、3.SB01・02、4.SB01、5.SB02、6.SB04



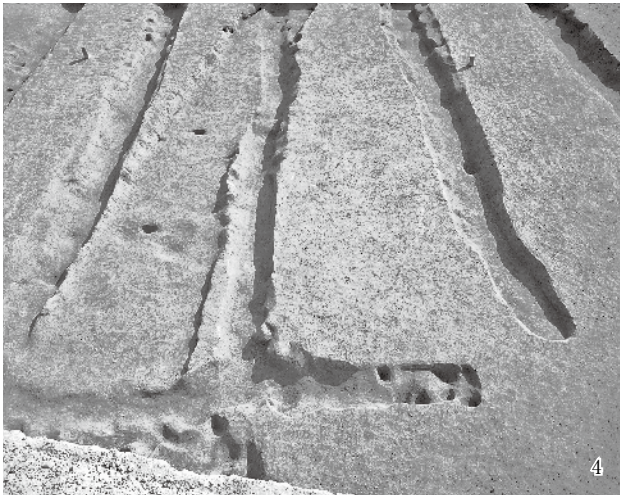
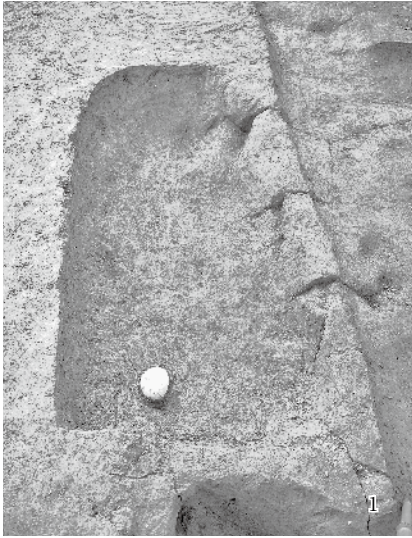
1.SB05、2.SB06、3.30～63区南半部全景（西から）、4.30～63区北半部全景（東から）、5.SB07、6.SB10・11



図版第四〇 遺構（上層中世）

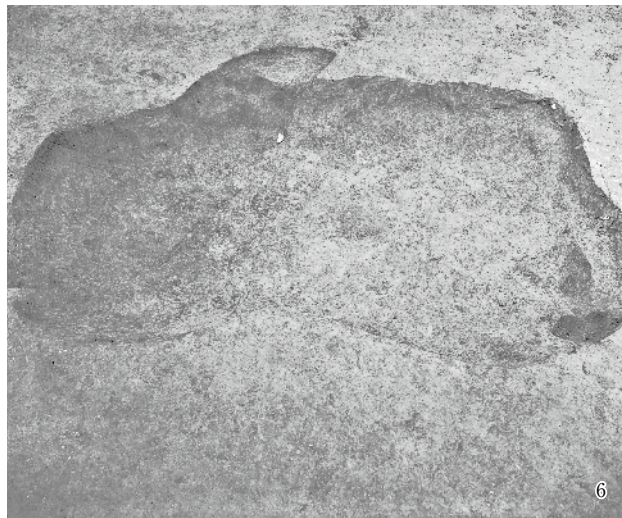
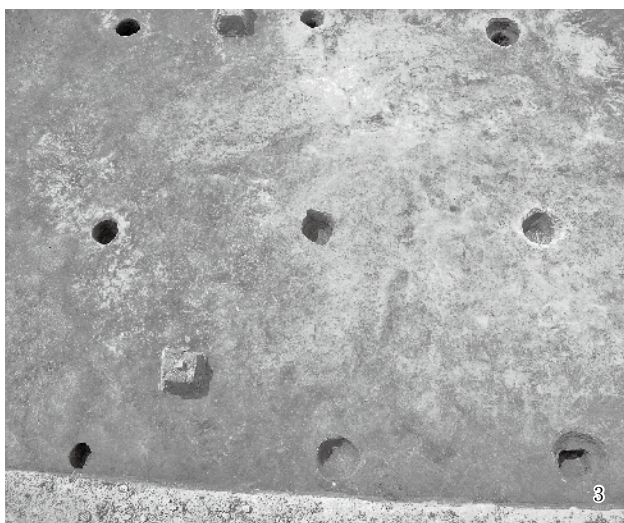
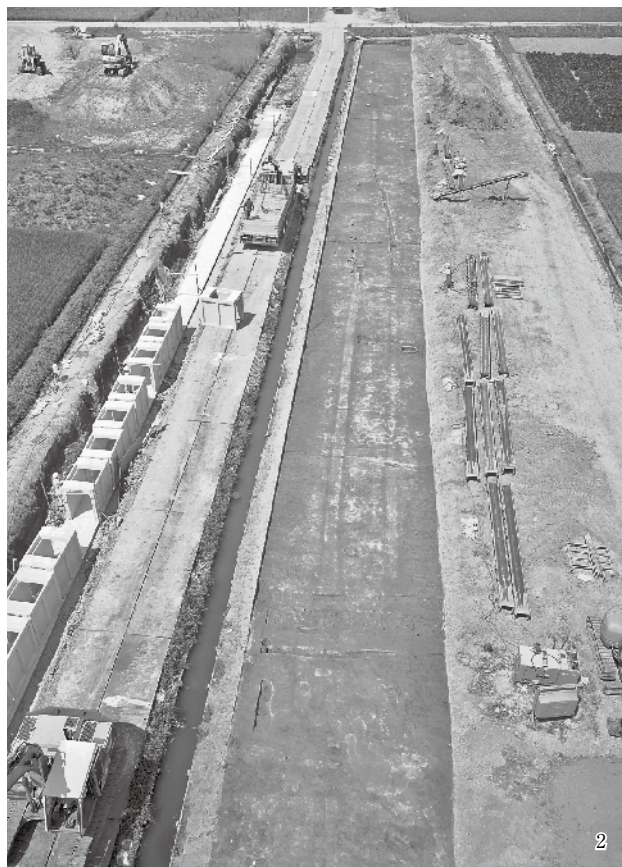


1. SE01、2. SE02、3. SE03・04、4. SE04断面、5. SK25、6. SK32、7. SK39、8. SK38

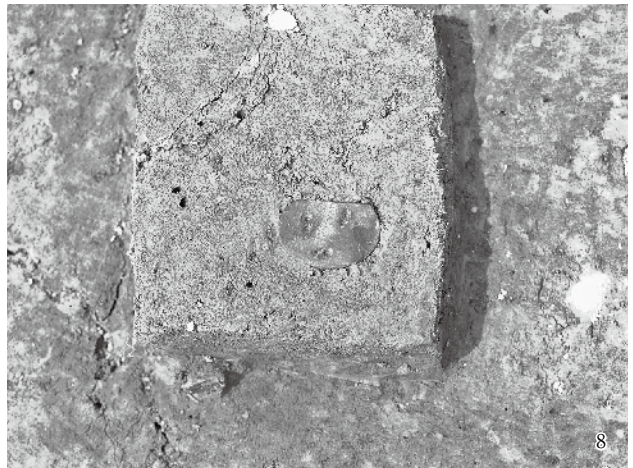


1.SK41、2.SK19・20、3.SK30、4.畝状遺構、5.畝状遺構、6.SD42南半部全景、7.SD42近景

図版第四二 遺構（上層中世）

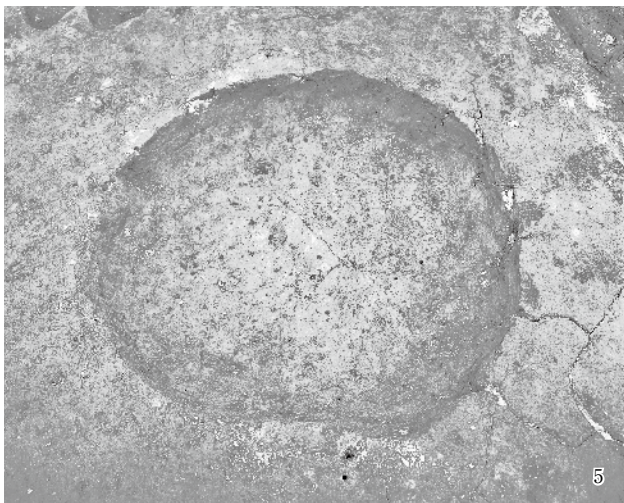
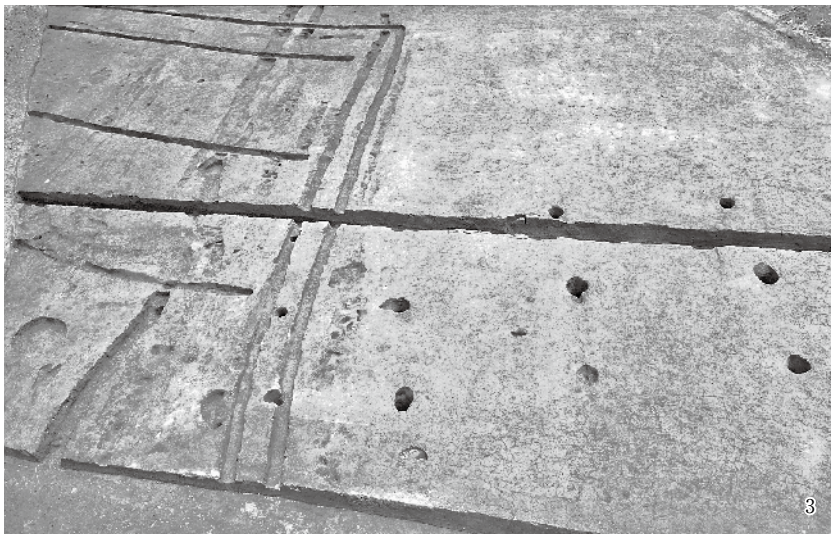


1.97~121区南半部全景（東から）、2.97~121区全景（東から）、3.SB08、4.SK54、5.SK42、6.SK45



1. SE06全景、2. SE06縦板枠と曲物枠、3. SE06遺物出土状況、4. 漆碗出土状況、5. SE06井戸枠側面、6. SE06曲物枠側面、7. 83・84区溝列、8. 丸軋出土状況

図版第四四 遺構（上層中世）



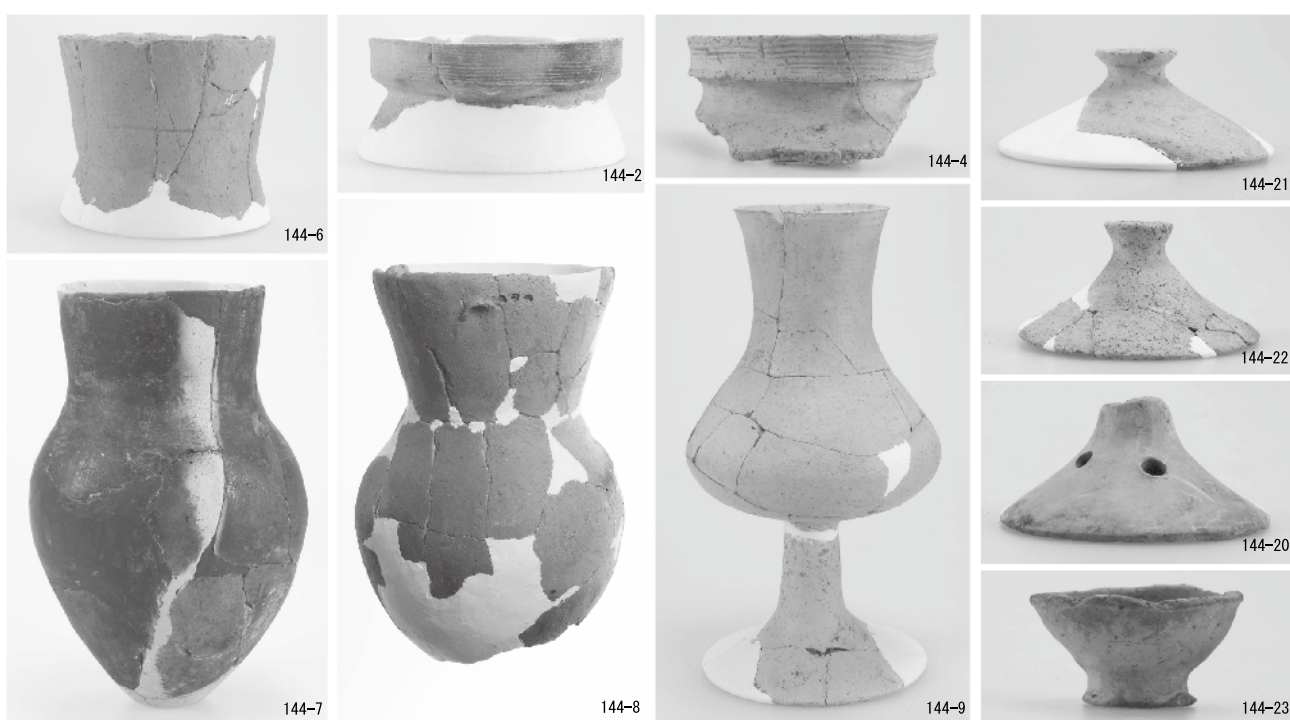
1.123～142区全景（東から）、2.123～142区全（西から）、3.SB09、4.SK61、5.SK64、6.SD123・126

図版第四五 遺物 土器（東地区住居）

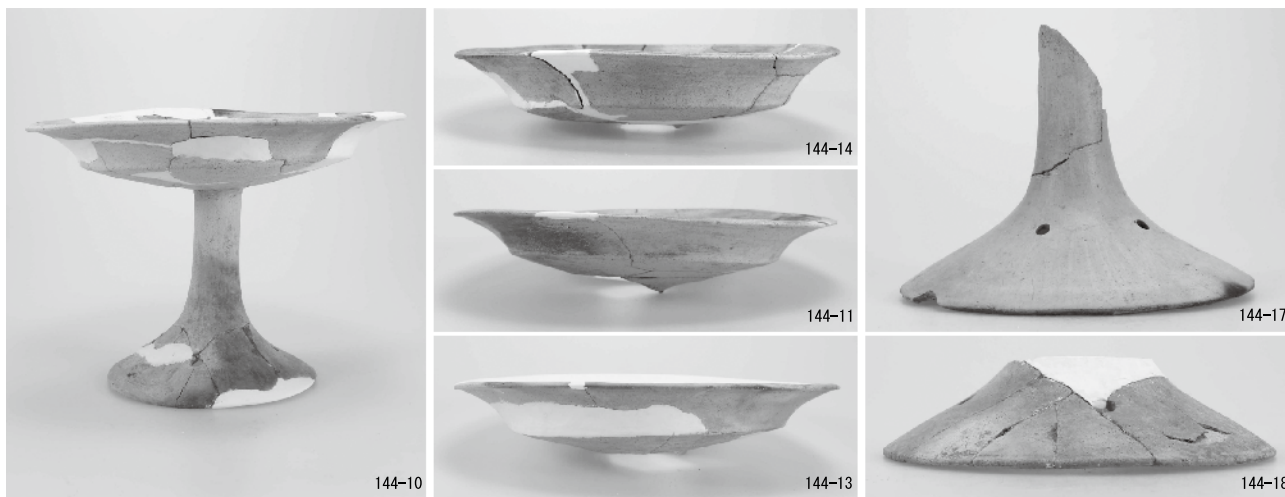




SI01



SI01 中央土坑

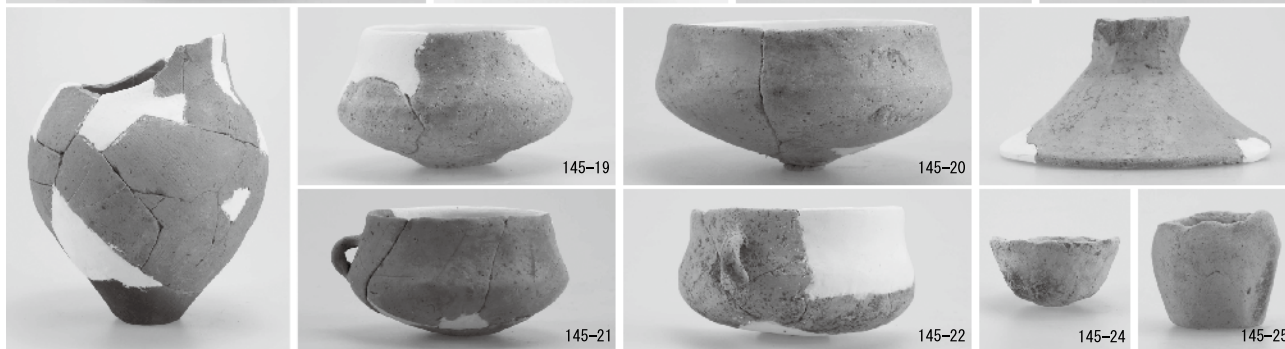
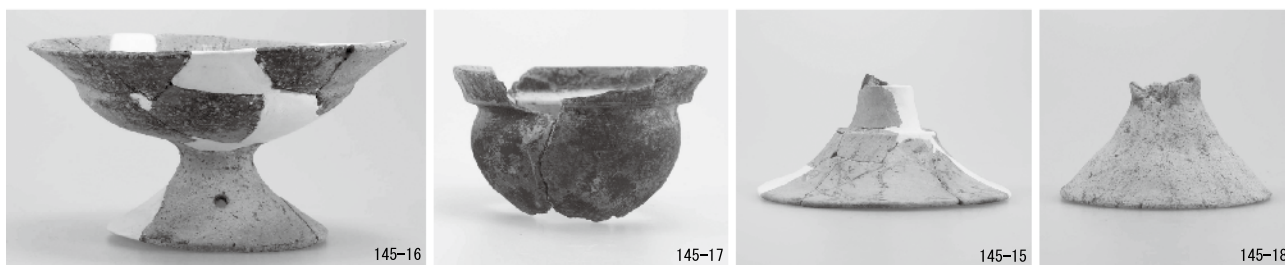


SI01 中央土坑

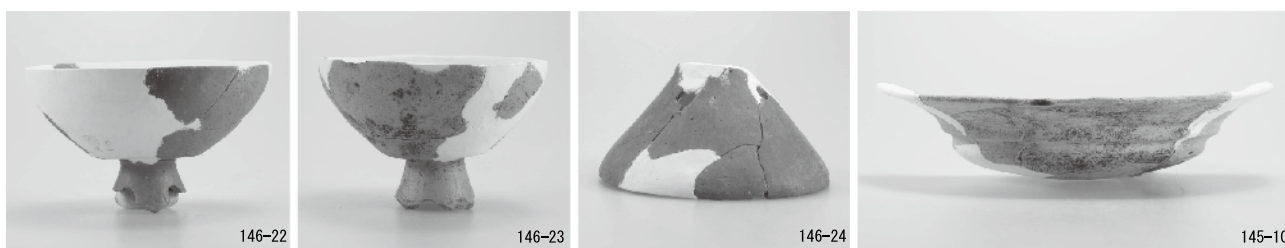


SI02

SI03



SI03



SI07

SI03



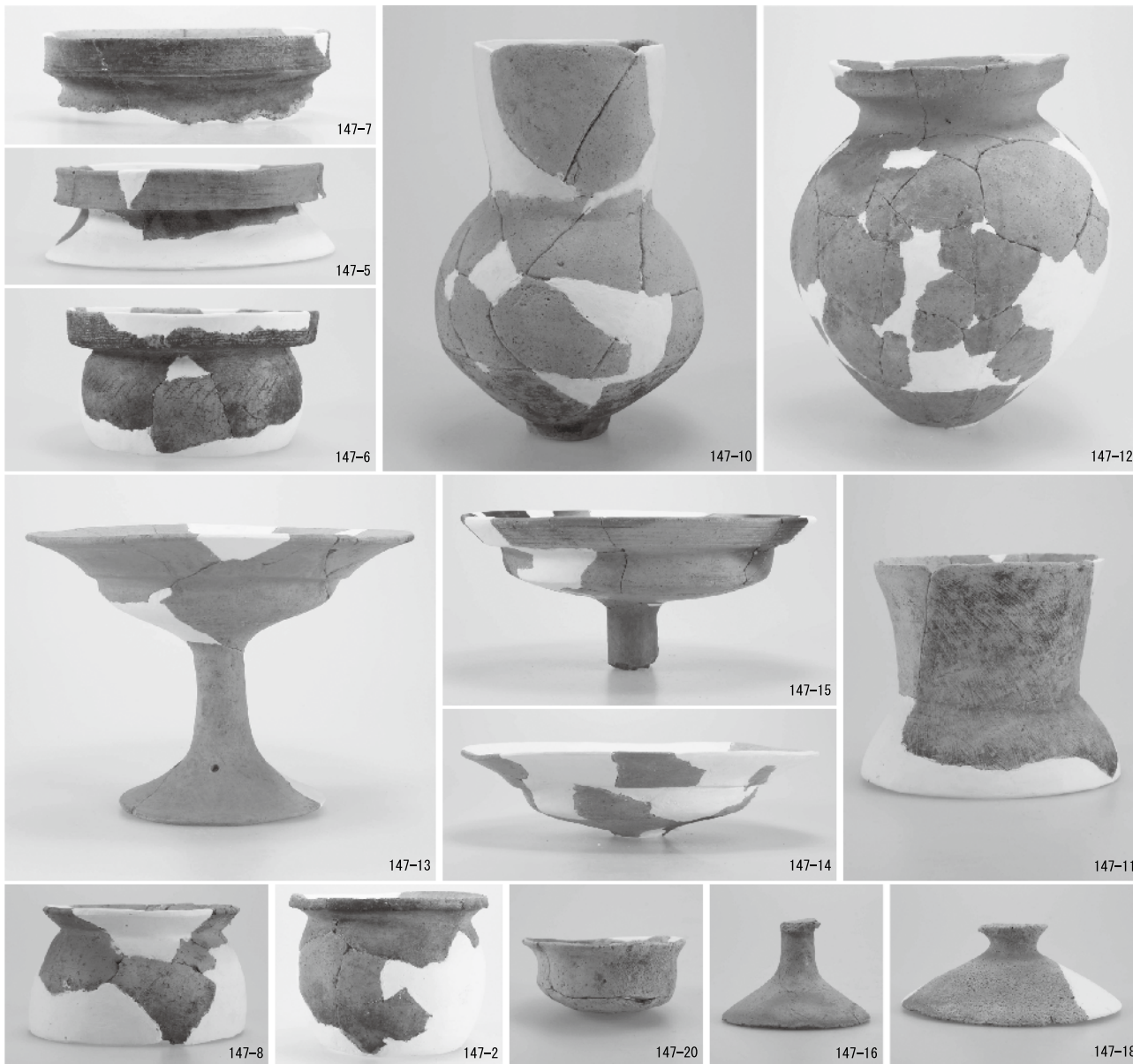
図版第四八 遺物 土器（東地区住居）



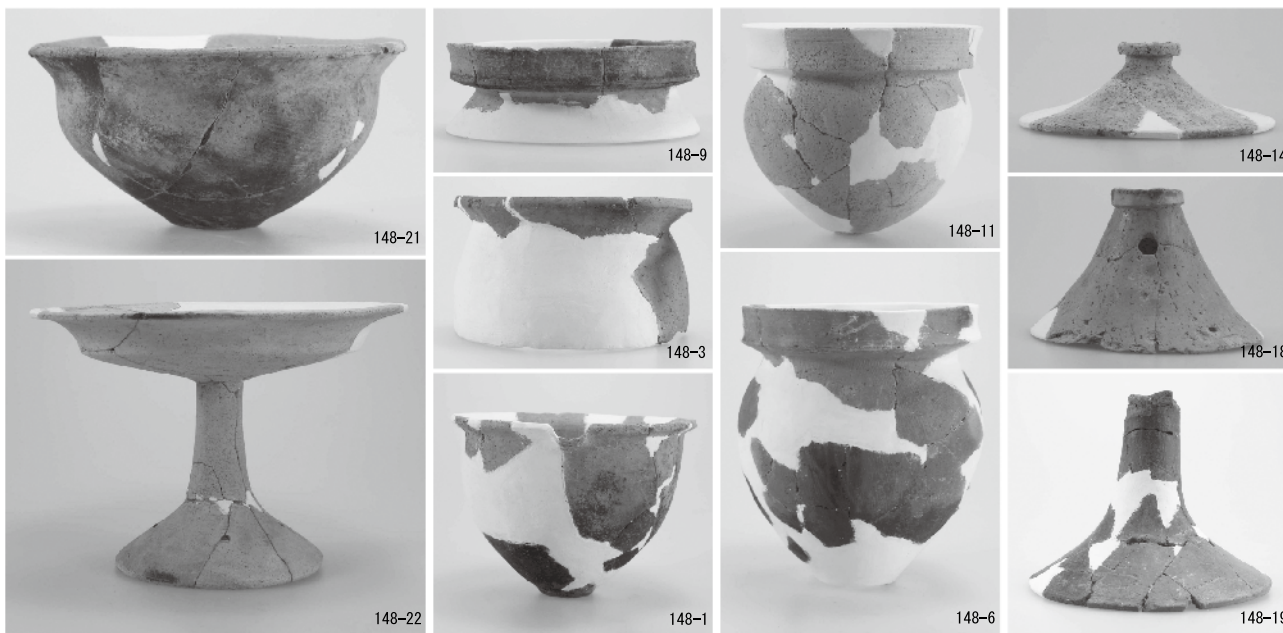
SI06



SI08



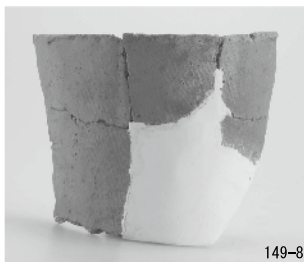
SI08



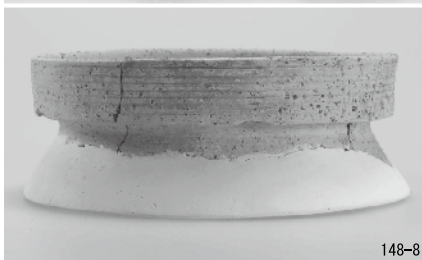
SI09

SI11

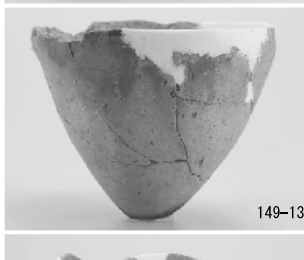
図版第五〇 遺物 土器（東地区住居）



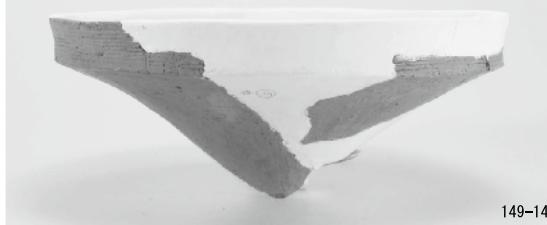
149-10



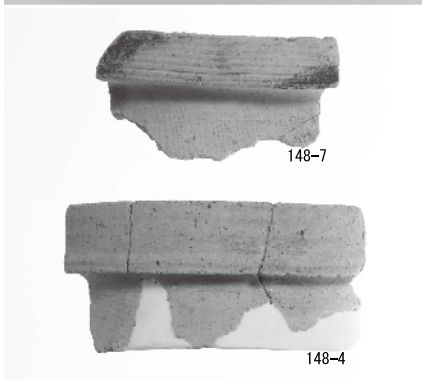
148-8



149-13



149-14

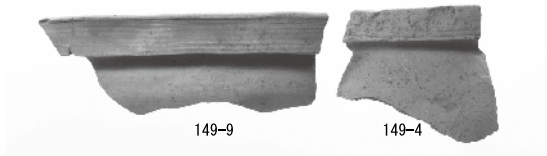


148-7

148-4



149-7



149-9

149-4



149-17



149-12

SI11

SI12



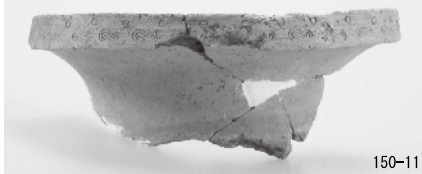
150-12



150-17



150-13



150-11



150-19

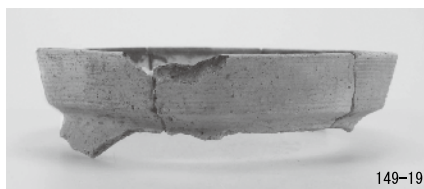


150-14



150-1

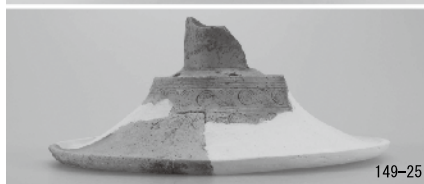
SI13



149-19



149-23



149-25



149-22

SI15



151-9

SI19



151-5



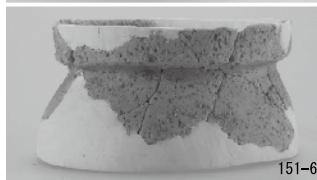
151-22



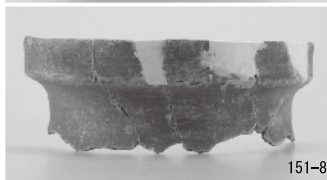
151-10



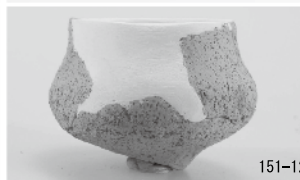
151-11



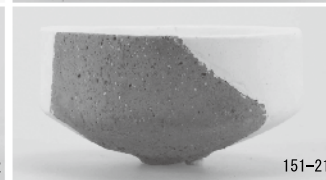
151-6



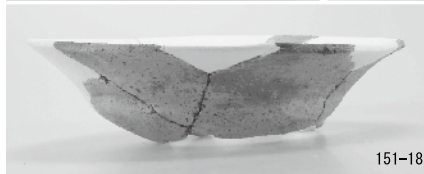
151-8



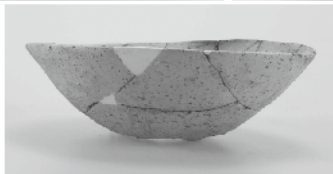
151-12



151-21



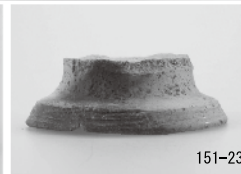
151-18



151-20



151-20



151-23

SI19



152-1



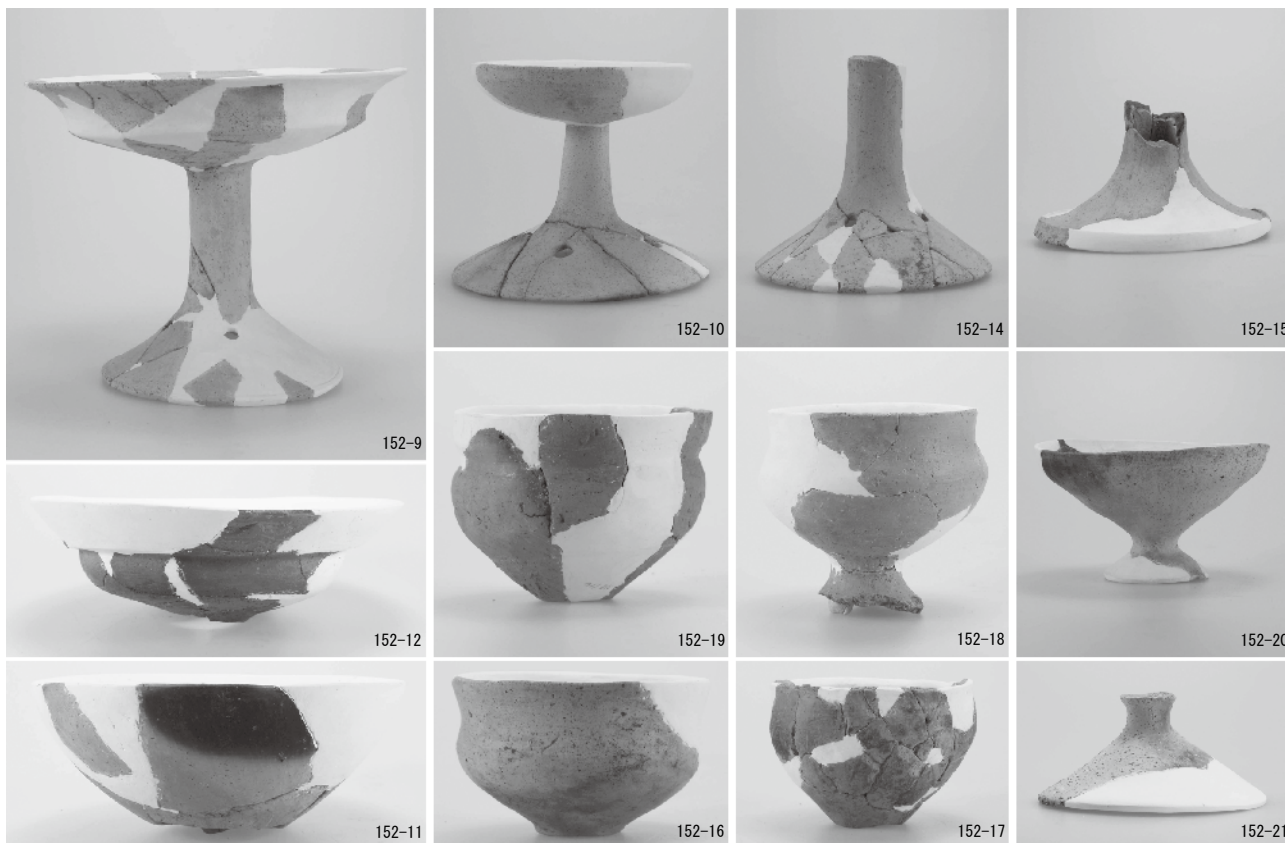
152-8

SI20

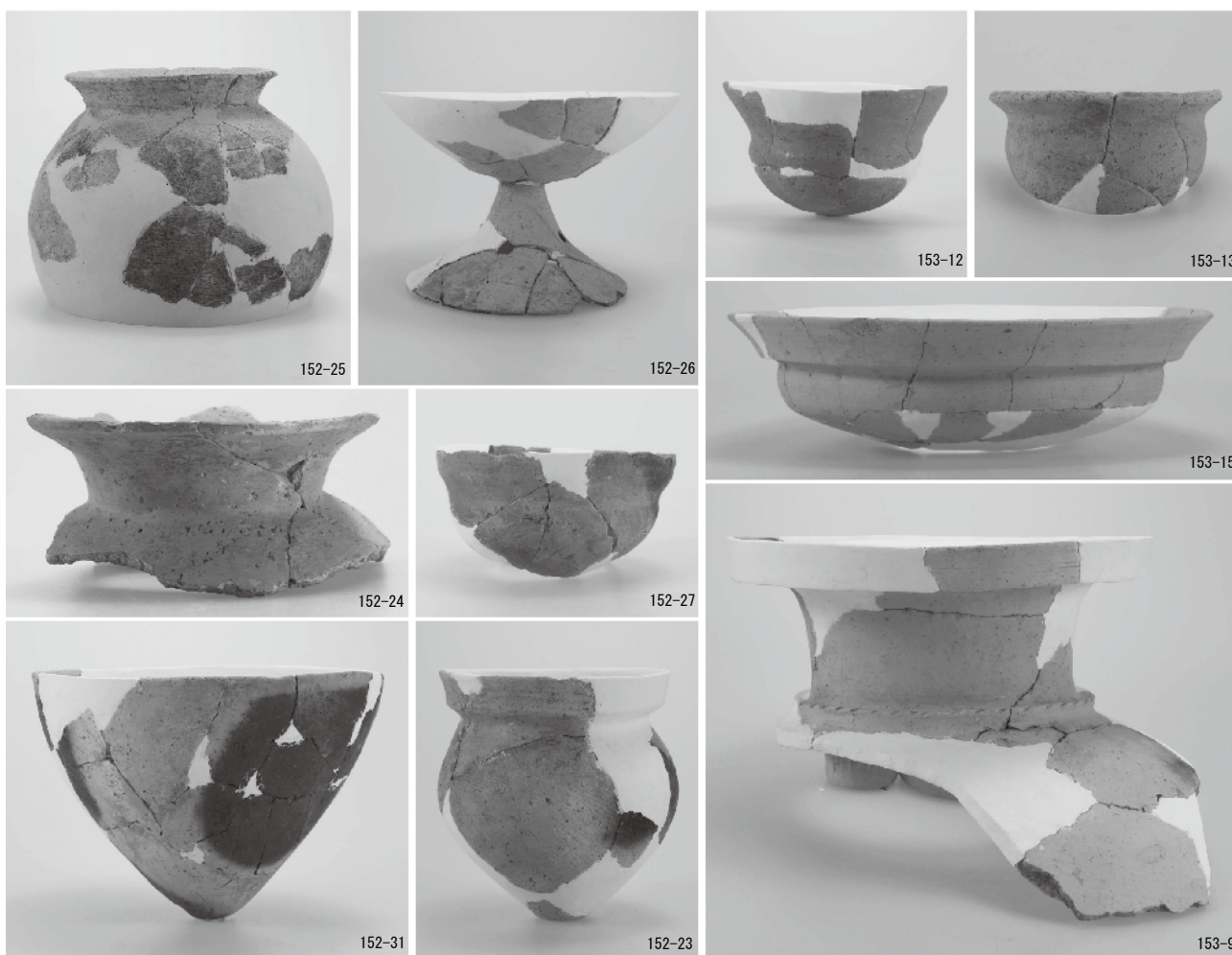


152-1

図版第五二 遺物 土器（東地区住居）



SI20

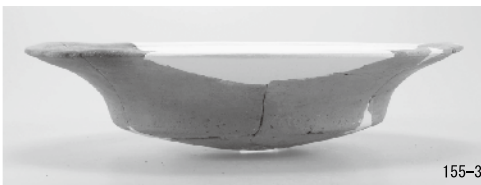


SI21

SI23



155-4



155-3

SK5043



155-11

SK5033



155-8



155-6



155-5

SK5039



155-9



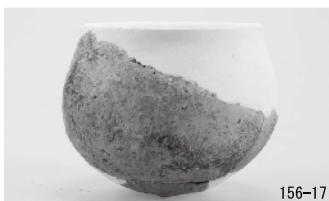
155-7

SK5032



155-15

SK5038



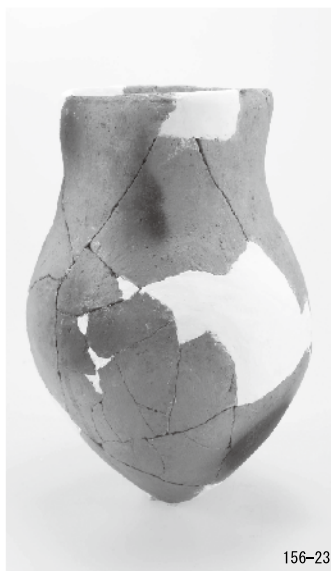
156-17



156-12



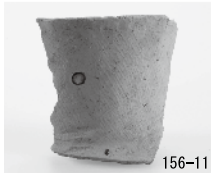
156-24



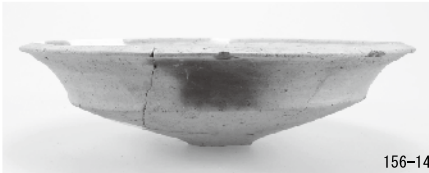
156-23



156-20



156-11



156-14



156-26



156-21



156-27



156-27



156-28

SK5044

SK5045

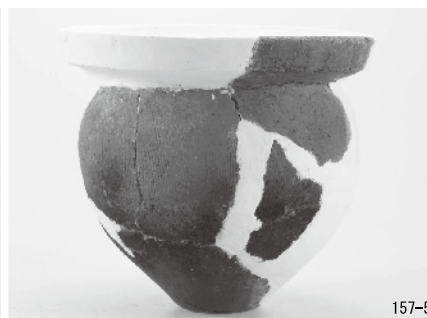
図版第五四 遺物 土器（東地区土坑）



SK5049



SK5058



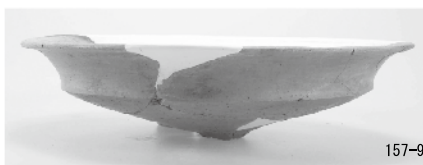
157-5



157-3

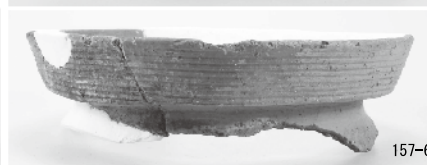


157-1



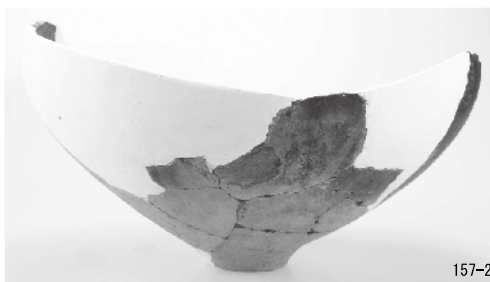
157-9

SK5060



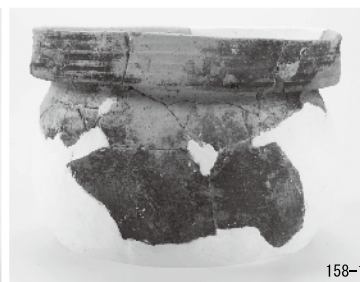
157-6

SK5059



157-2

SK5050



158-1

SK5064



158-11



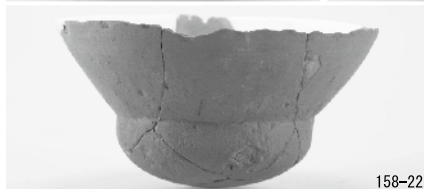
158-13



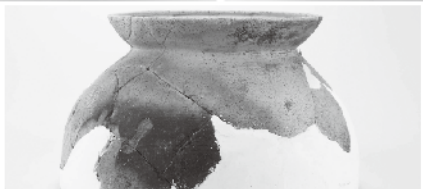
158-14



158-19



158-22



158-16



158-20

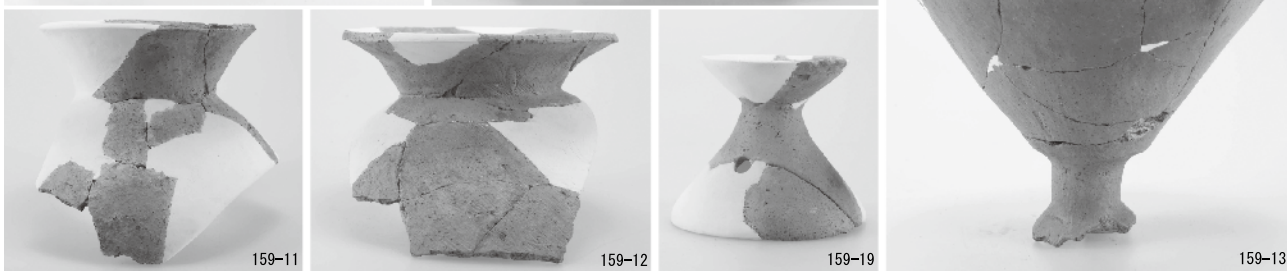
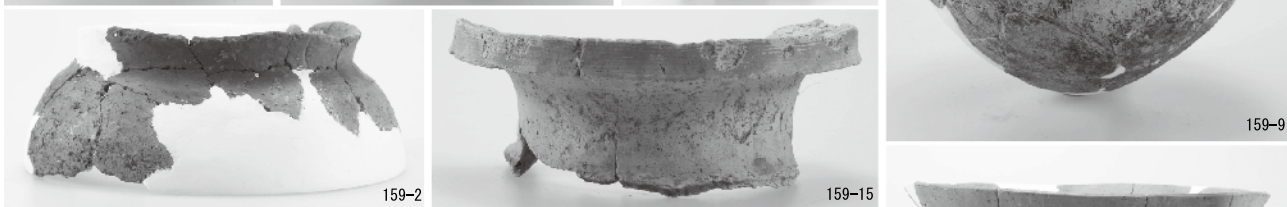
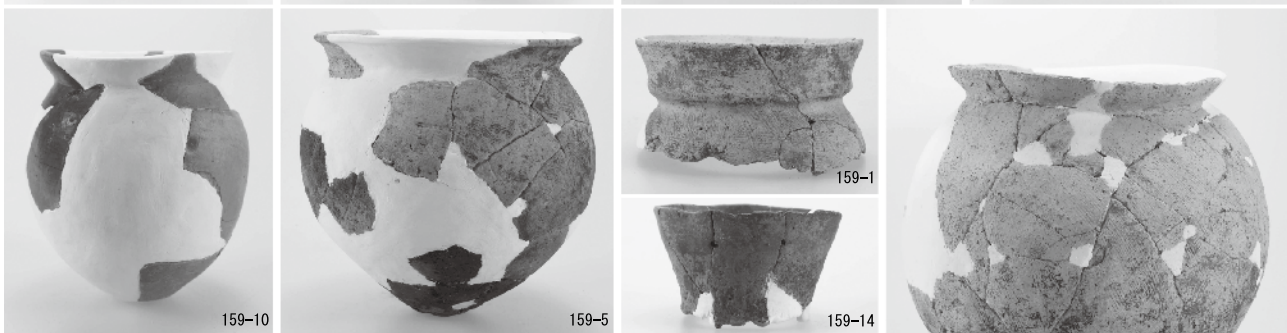
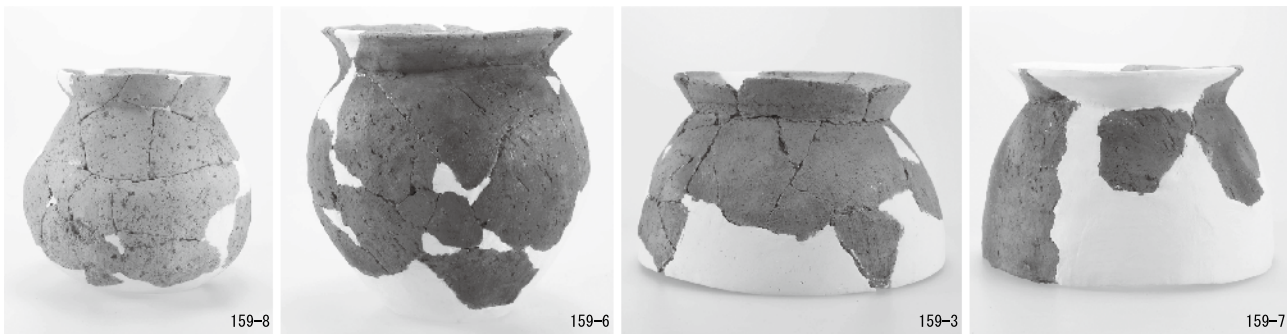


158-15

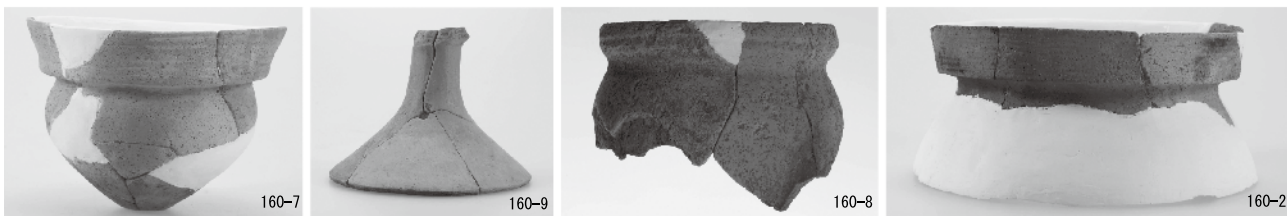


158-18

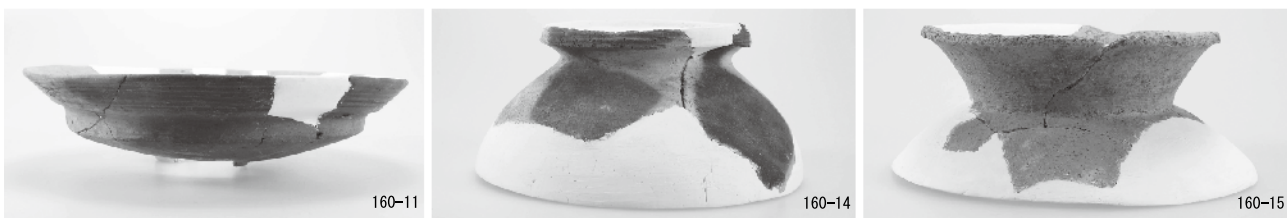
SK5071



SK5073



SK5074



SK5077

SK5078



図版第五六 遺物

土器（東地区土坑）



SK5081



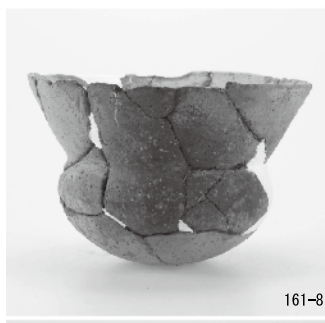
SK5083



SK5084



SK5085



161-8



161-2



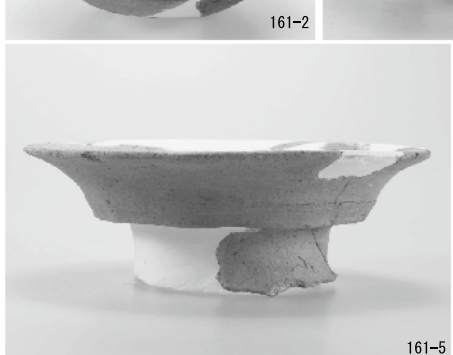
161-4



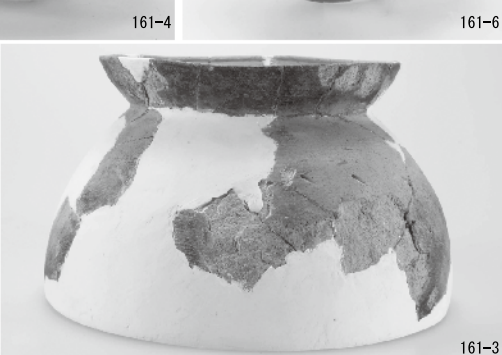
161-6



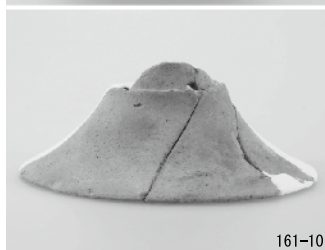
161-7



161-5



161-3



SK5087

161-10



SK5088

162-2

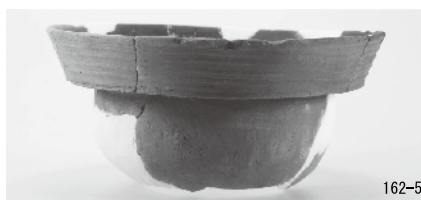


161-1

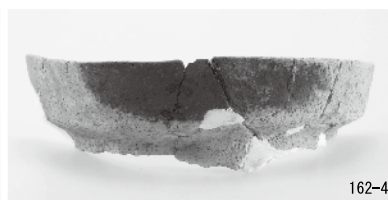
SK5087



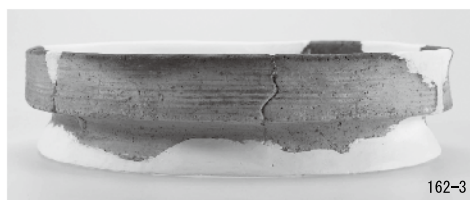
161-9



162-5



162-4



162-3

SK5089



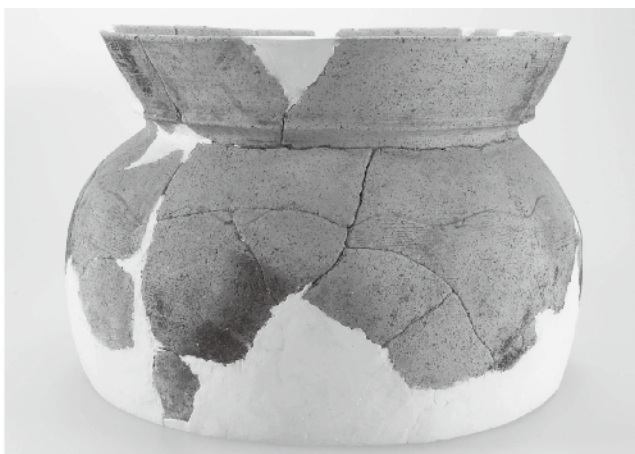
162-7

SK5093



162-12

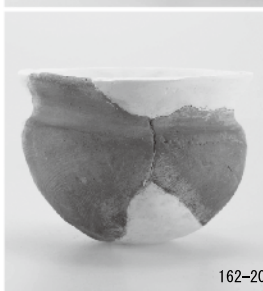
SK5094



162-8



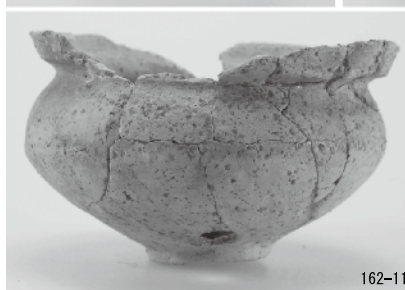
162-13



162-20



162-14



162-11



162-9



162-21



162-18

SK5094

SK5095



163-1



163-10



163-9



163-6



163-7



163-2



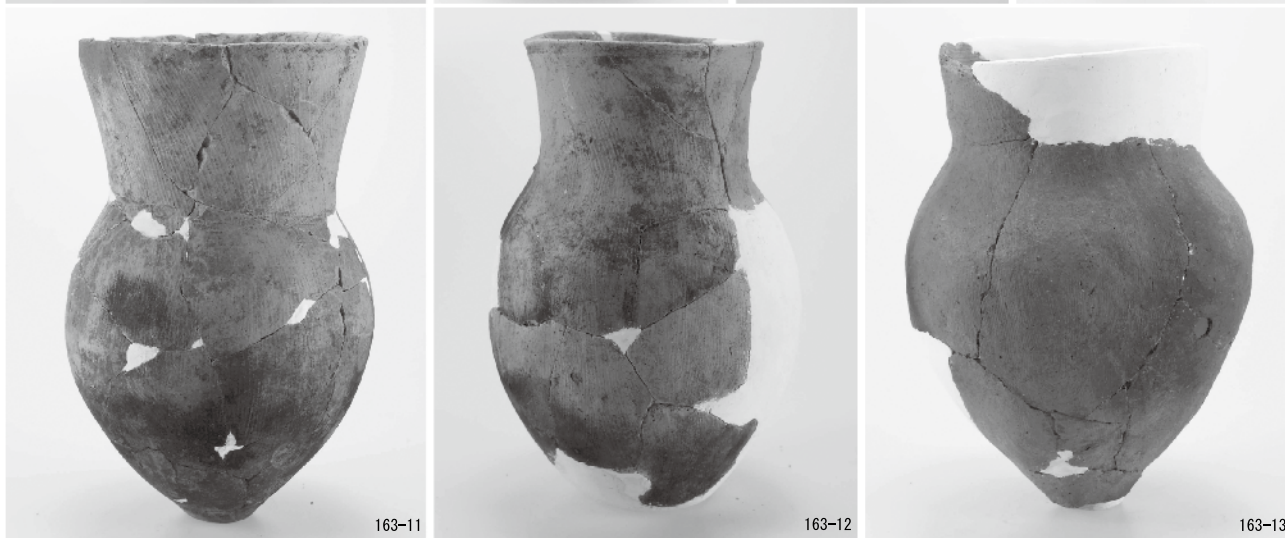
163-8



163-16

SK5100

図版第五八 遺物 土器（東地区土坑）



SK5100



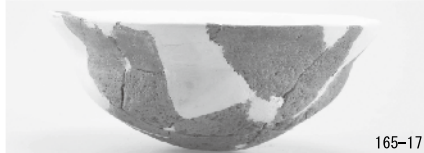
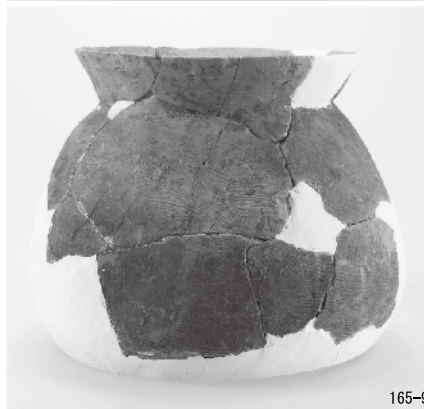
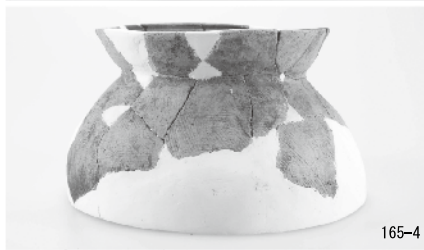
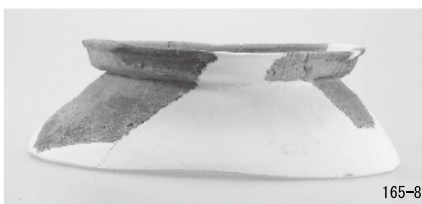
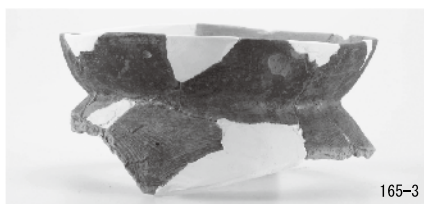
SK5110

SK5104

SK5108



SK5126



図版第六〇 遺物 土器（東地区土坑）



164-10



164-12



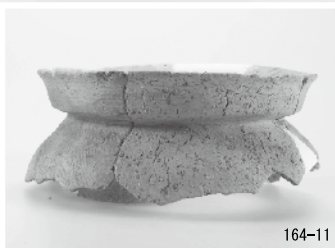
164-13



164-14



164-15



164-11

SK5128



166-1

SK5129

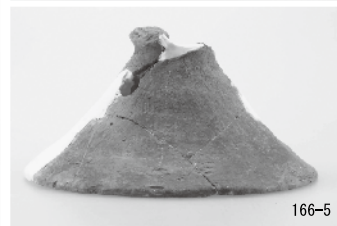


166-3

SK5138



166-4



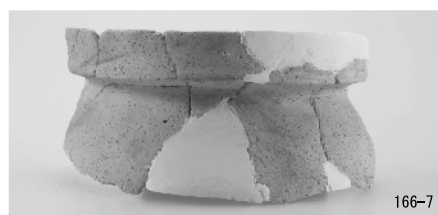
166-5



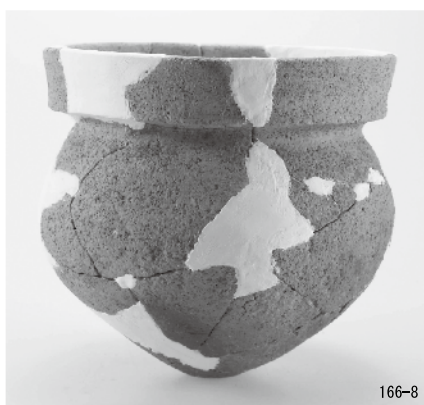
SK5130



166-9



166-7



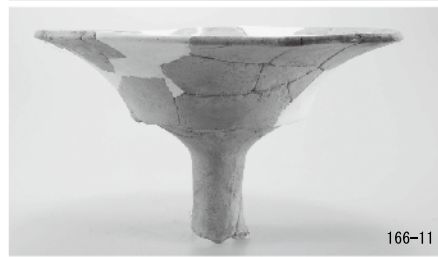
166-8

SK5143

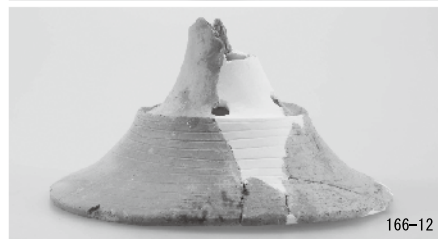


166-10

SK5143



166-11



166-12

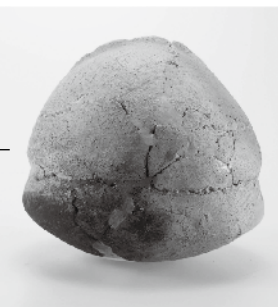
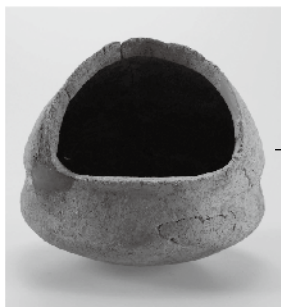


166-13



166-16

SK5146



167-1

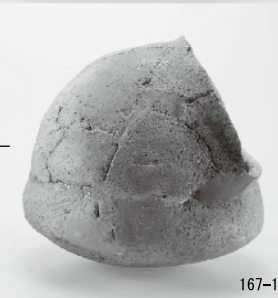
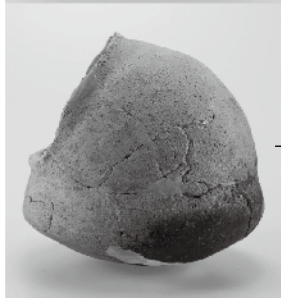


167-4

SK5151

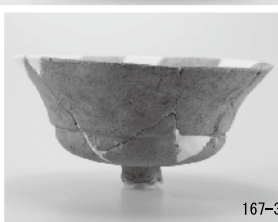


SK5155



167-2

SK5147

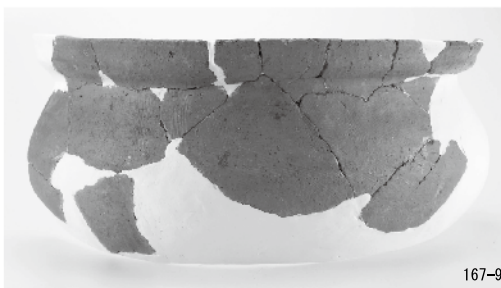


167-3



167-8

SK5152



167-9

SK5162



167-10



167-5

SK5159



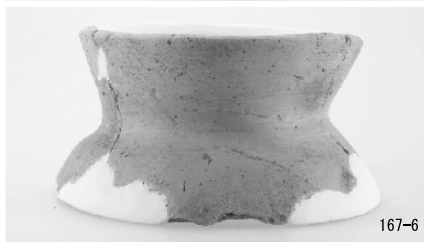
167-13

SK5163



168-2

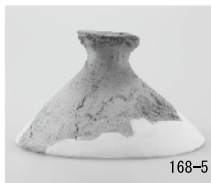
SK5167



167-6

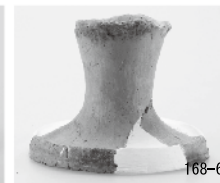


167-14



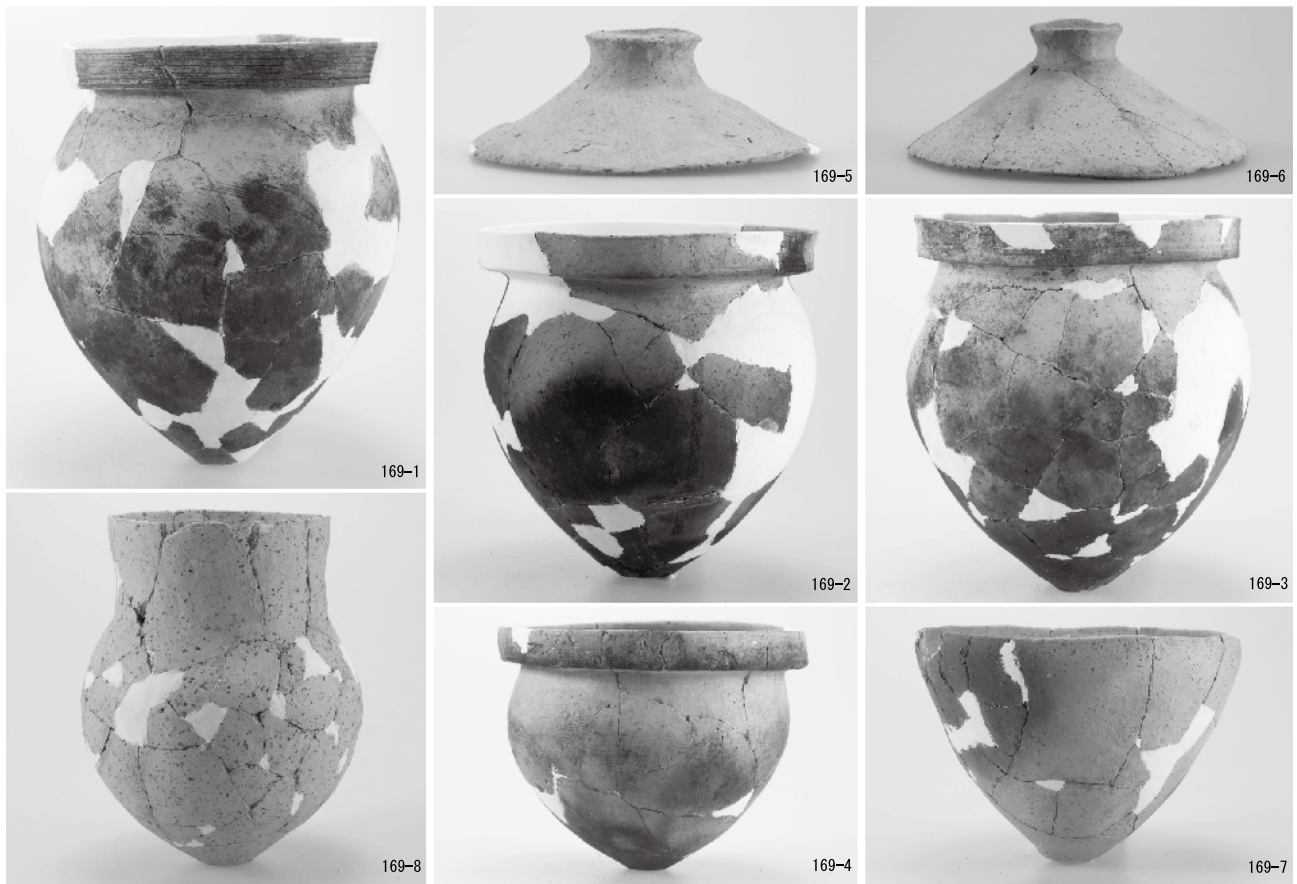
168-5

SK5173

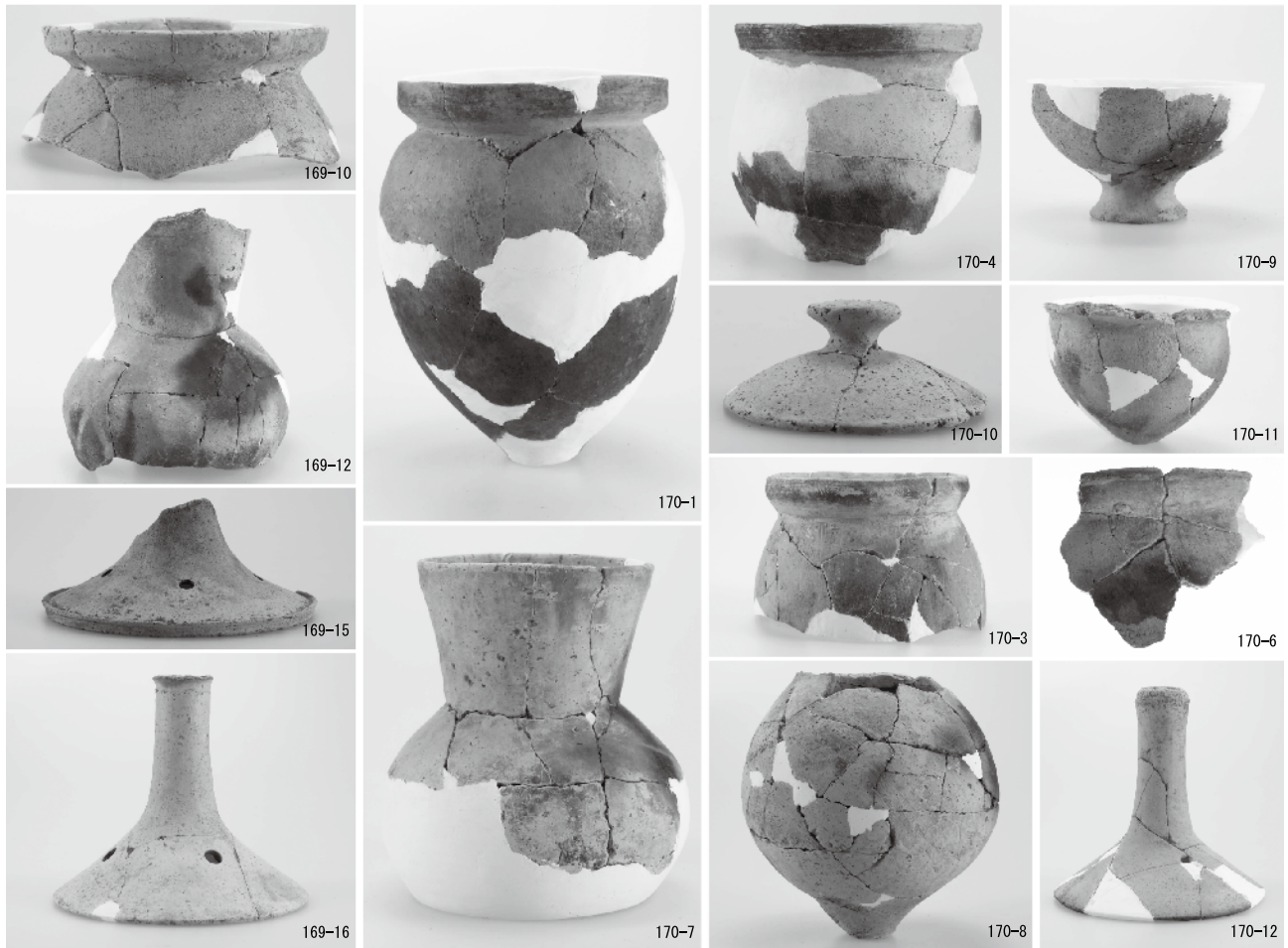


168-6

図版第六二 遺物 土器（東地区溝）

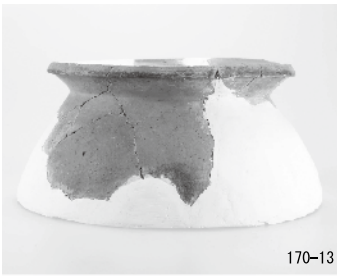


SD1002



SD1005

SD1006



170-13

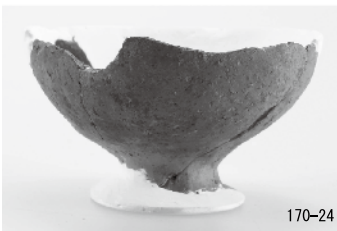


170-18



170-19

SD1007



170-24

SD1008



171-3



170-5



170-4



170-6

SD1018



171-1



171-2



171-7

SD1019

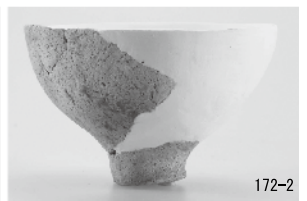


171-8



172-1

SD1032



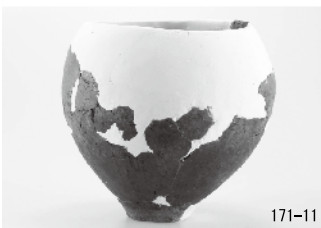
172-2

SD1038



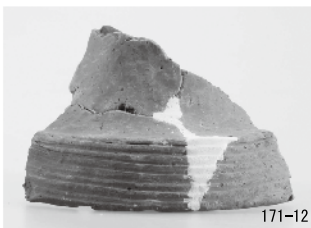
172-3

SD1043

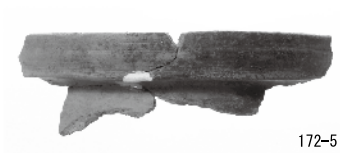


171-11

SD1041



171-12



172-5

SD1048



172-6



図版第六四 遺物 土器（東地区その他の遺構）



SE101

SE102

C31 区 SP101

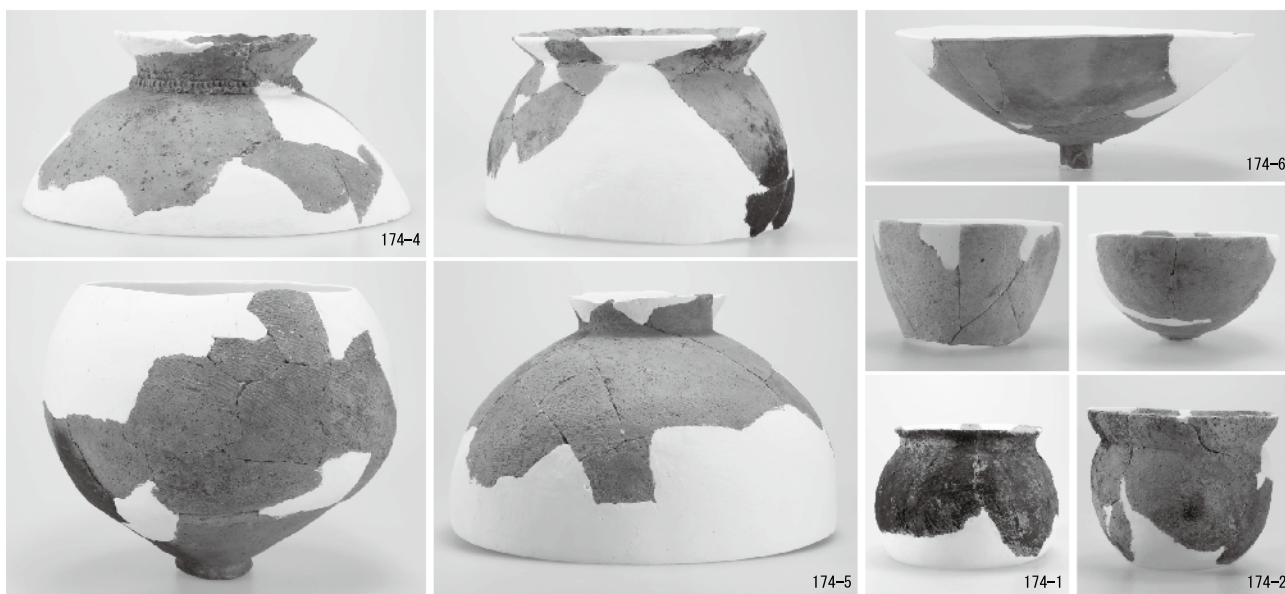


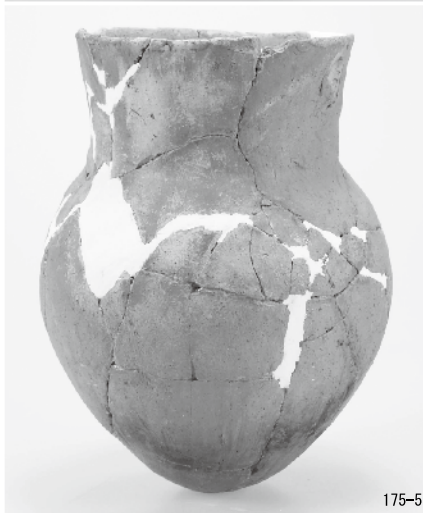
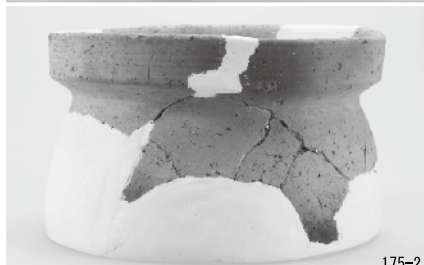
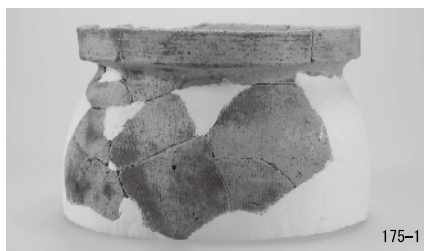
B30 区 SP105

C18 区 SP116

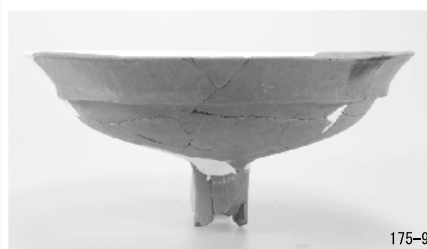
B25 区 SP108

B23 区 SP111





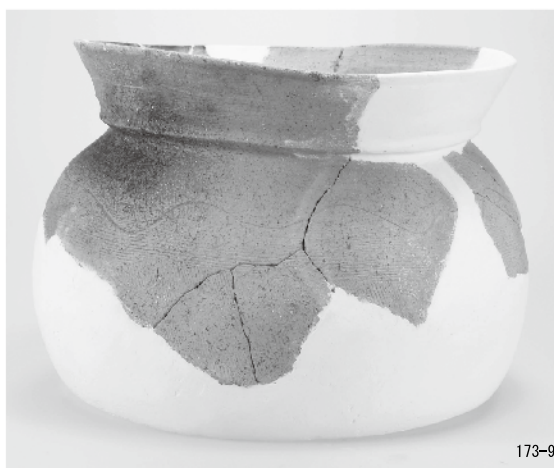
川 1



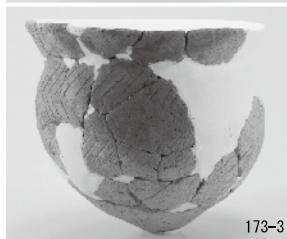
墳礫周辺



SX10



SX10



SX03



SX01



SX05

図版第六六 遺物 土器（東地区土器集中区）



175-11



175-14



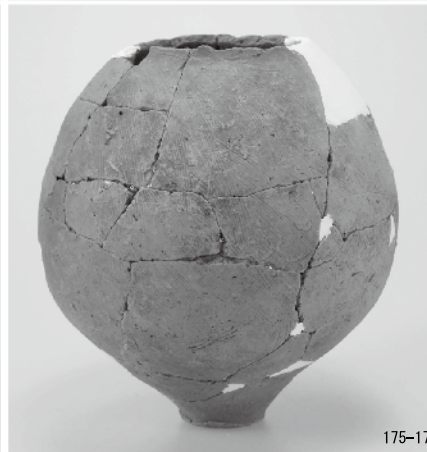
175-13



175-12

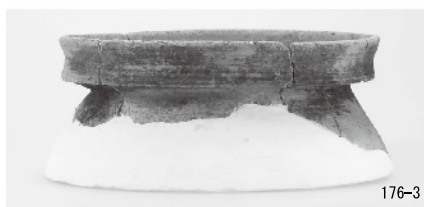


175-15

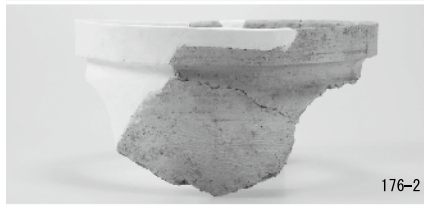


175-17

A3 区集中区



176-3



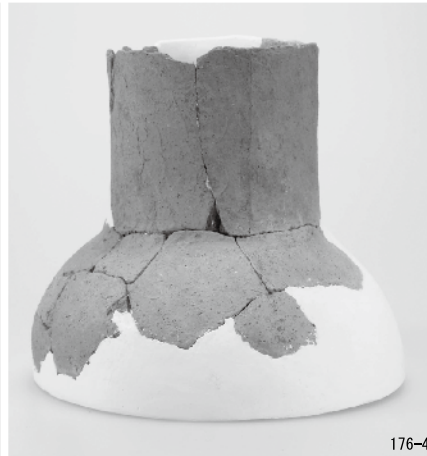
176-2



176-1



176-5



176-4

A7 区集中区



176-7



176-6



176-8

A8 区集中区



177-1



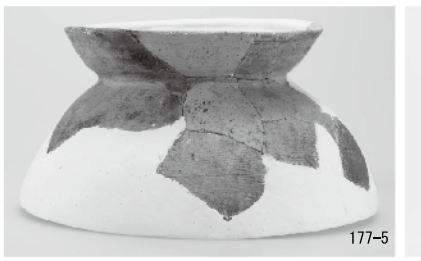
177-2



177-3



177-4



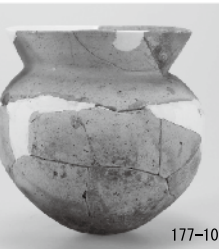
177-5



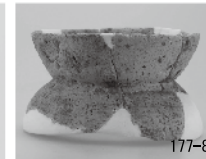
177-6



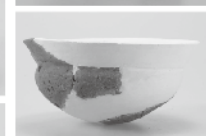
177-7



177-10



177-8



177-12



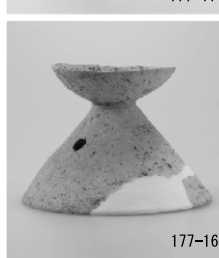
177-9



177-11



177-17



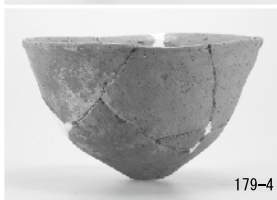
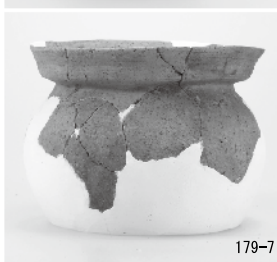
177-16



177-15

A33 区集中区

図版第六八 遺物 土器（東地区土器集中区）

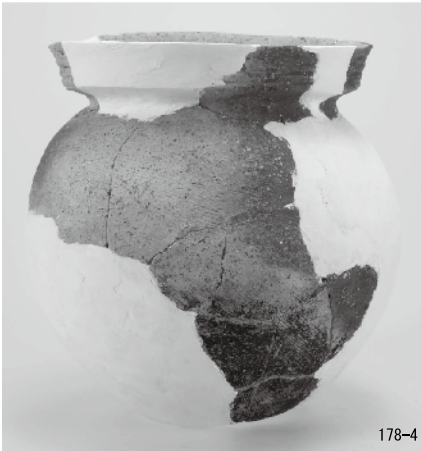
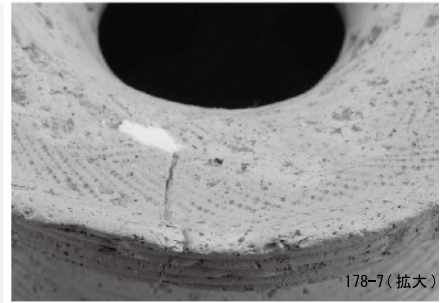
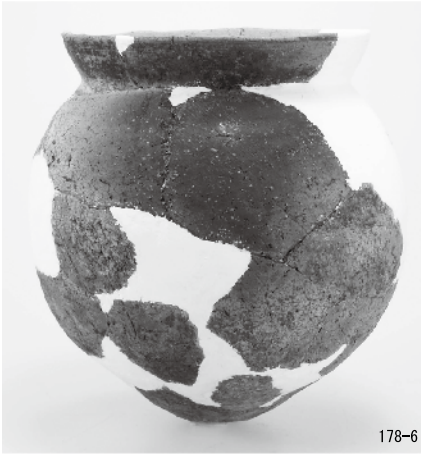


A34 区集中区

A35 区集中区



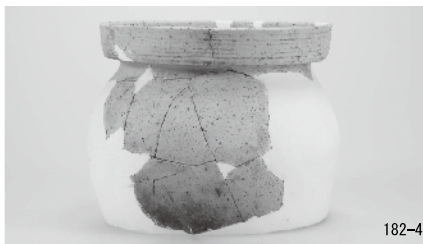
A・B40 区集中区



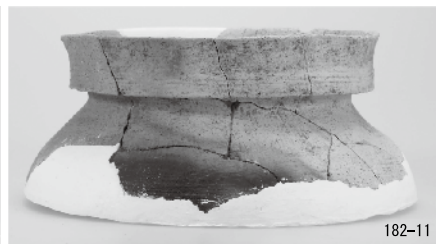
図版第七〇 遺物 土器（東地区包含層）



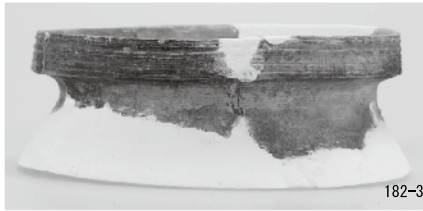
182-5



182-4



182-11



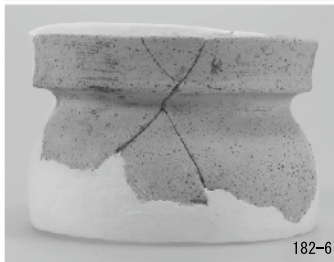
182-3



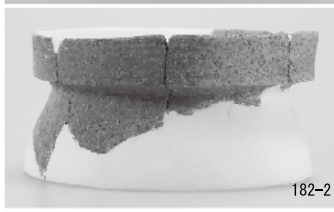
182-17



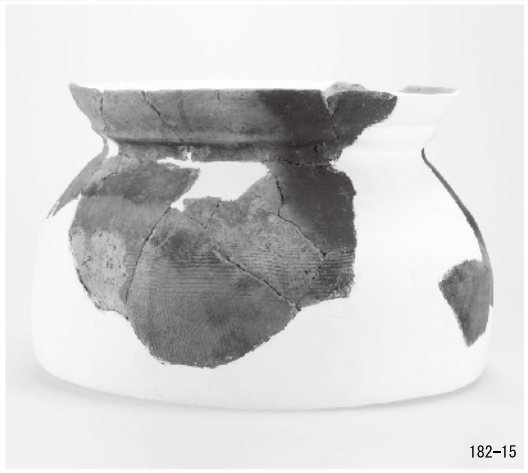
172-1



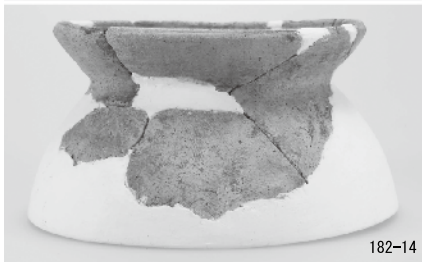
182-6



182-2



182-15



182-14



183-21



183-20



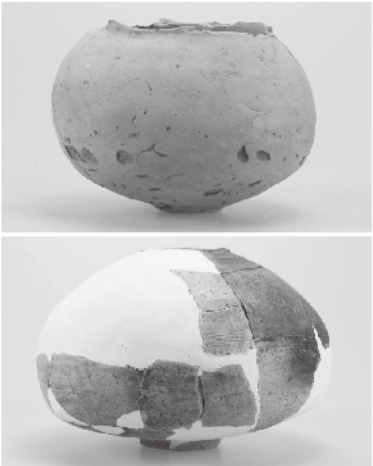
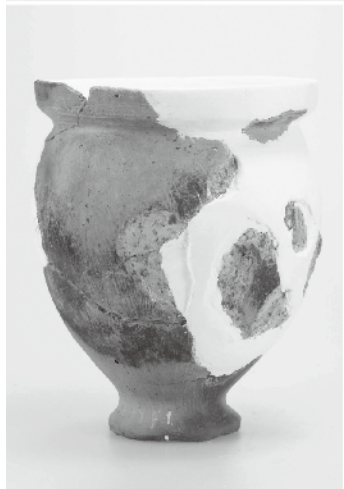
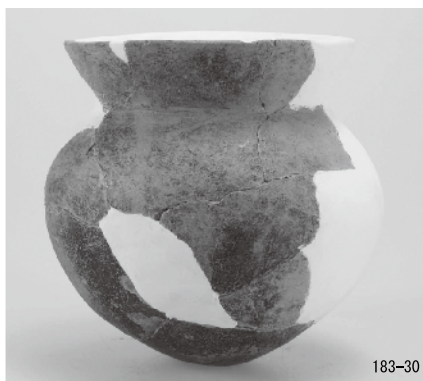
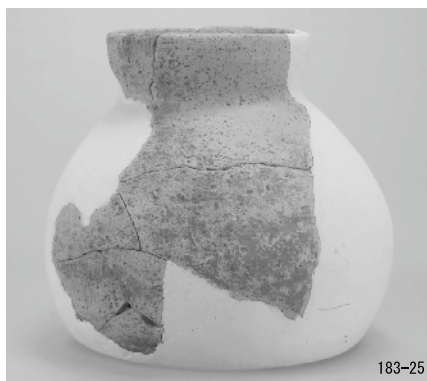
183-22



183-23

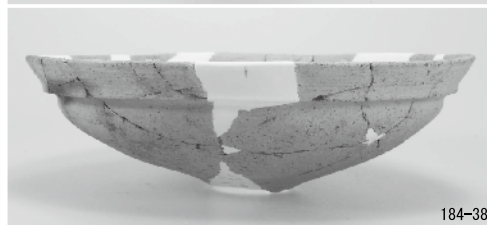


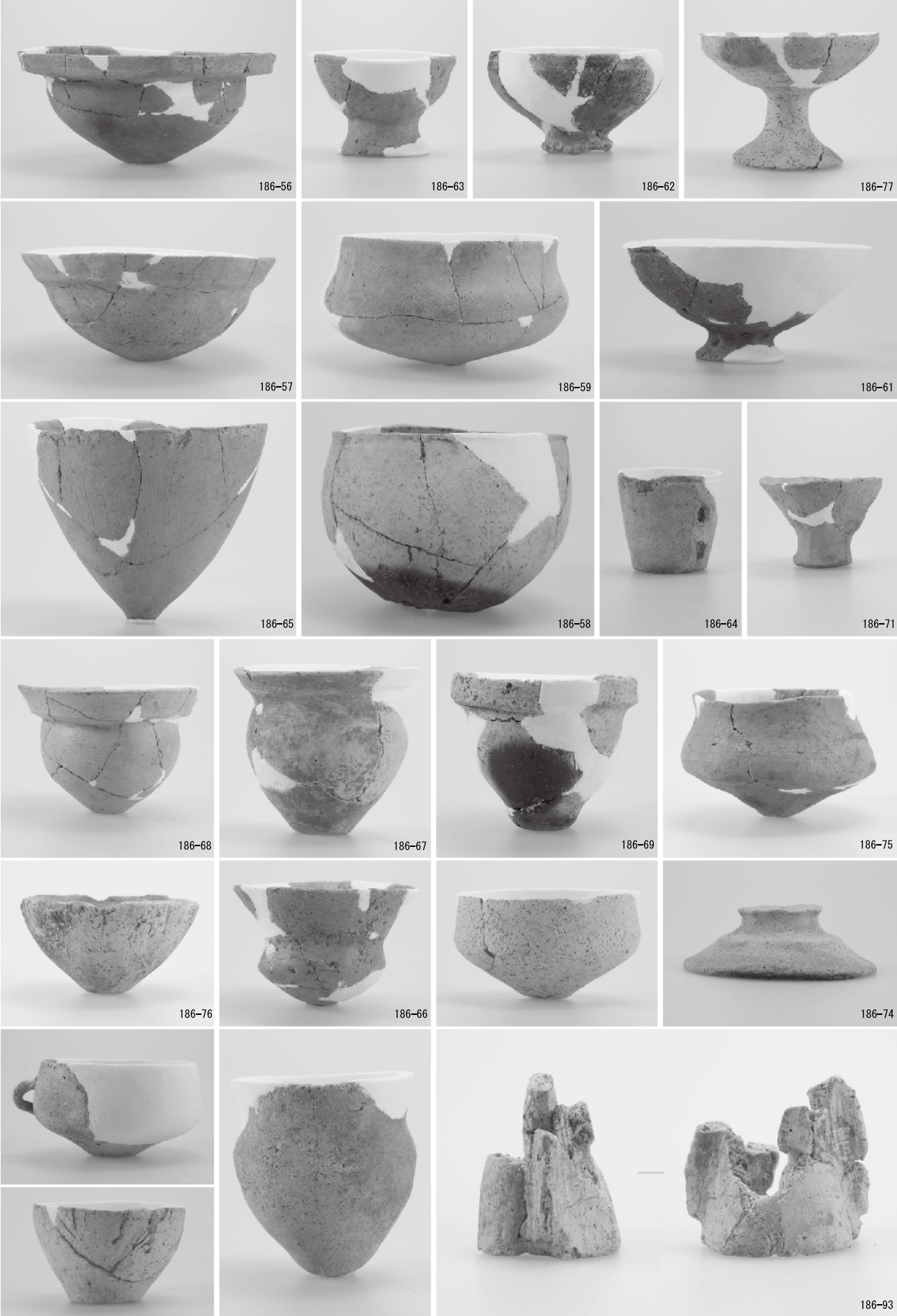
183-19





図版第七二 遺物 土器（東地区包含層）





図版第七四 遺物 土器（東地区包含層）

