



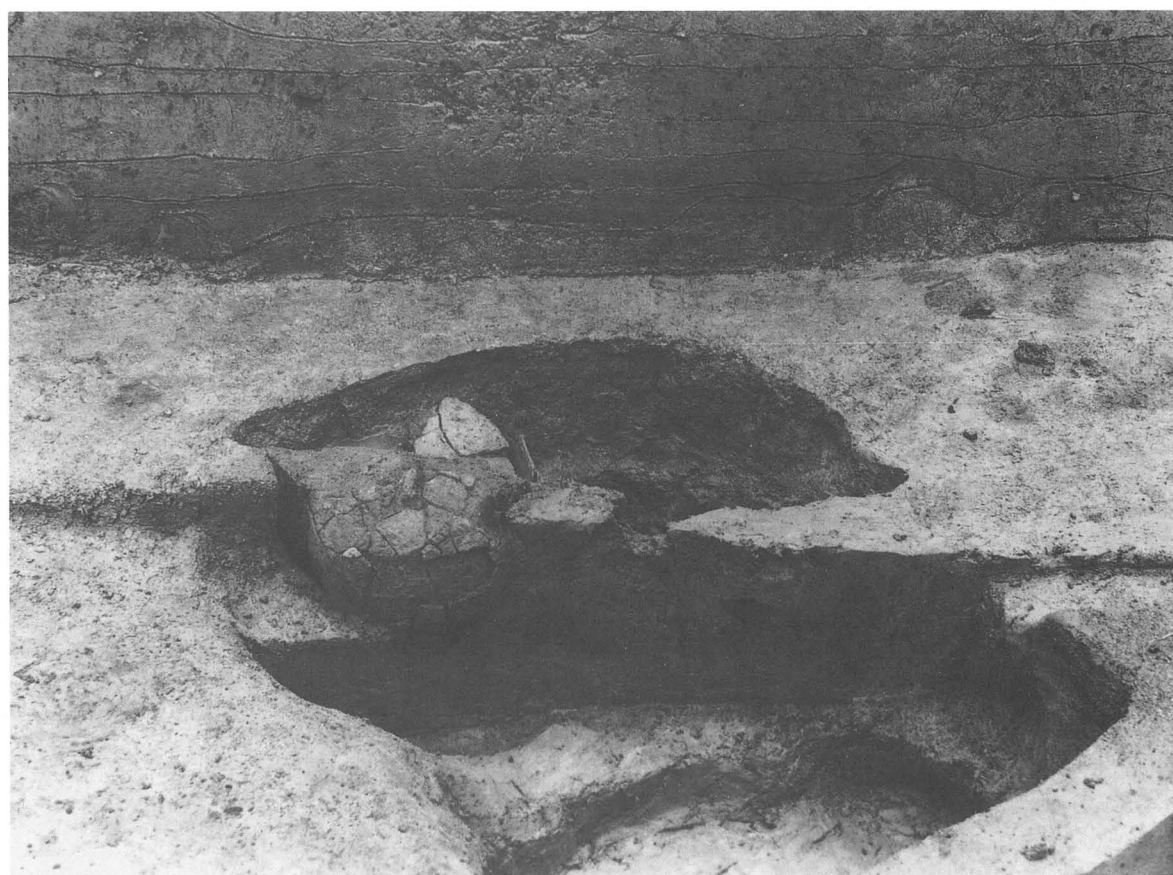
(1) 河川 1



(2) 河川 1 断面

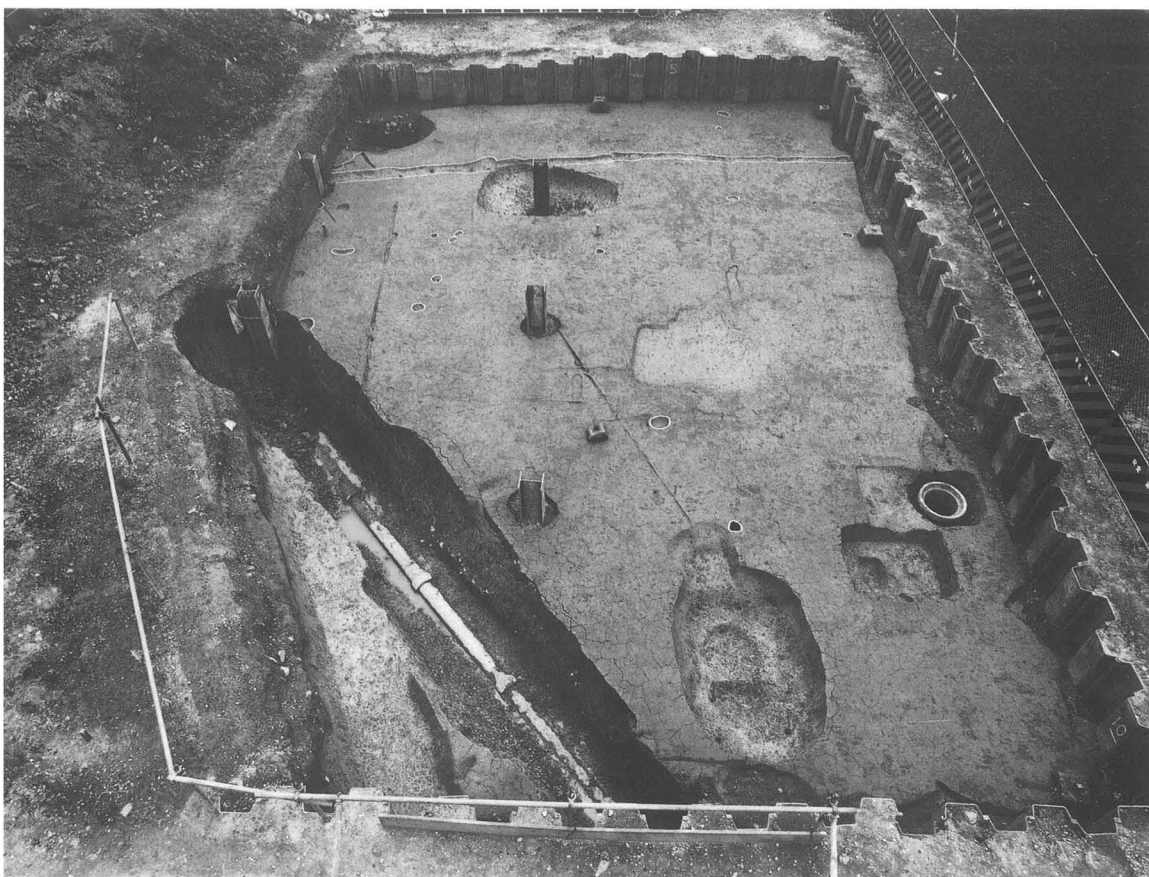


(1) 土坑 3

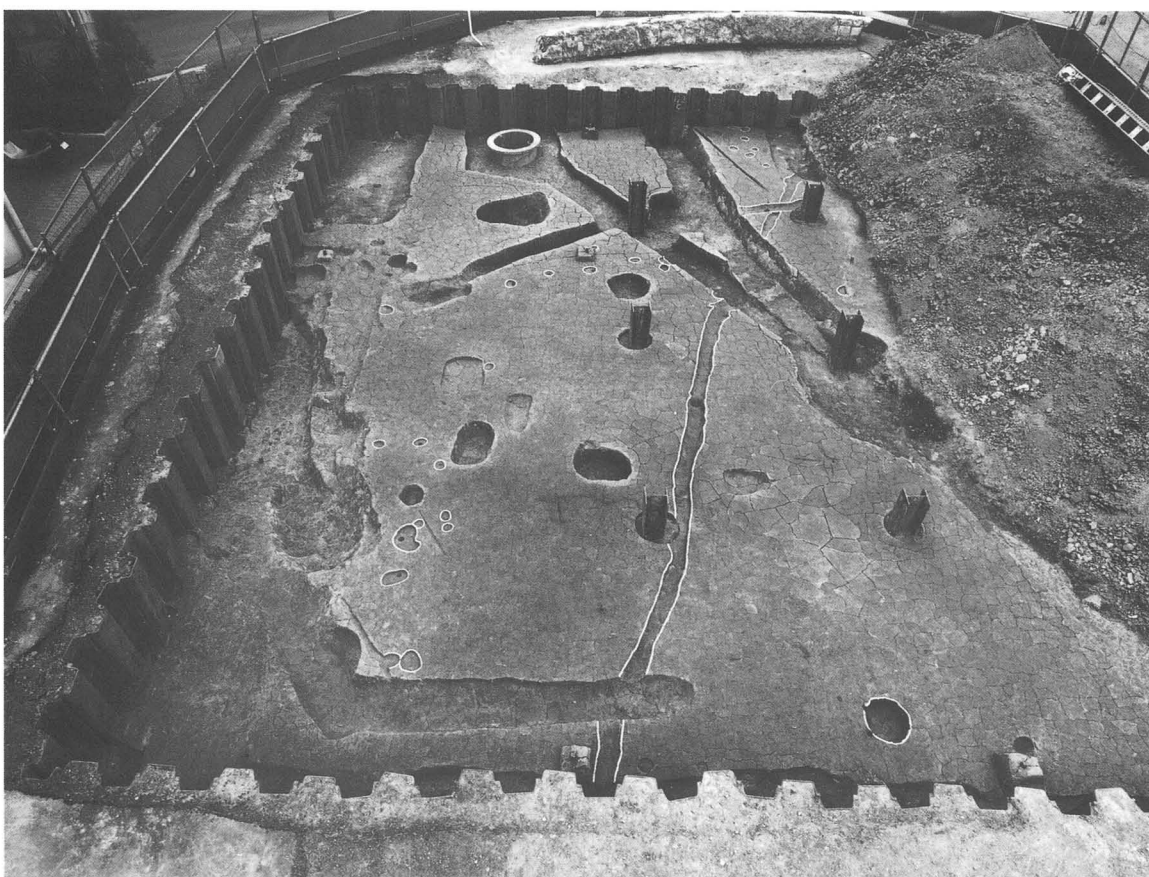


(2) 土坑 2 遺物出土状況

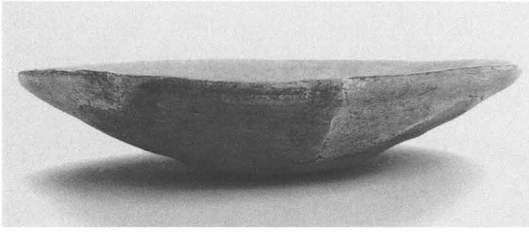




(1) 調査区全景1 (北半部)



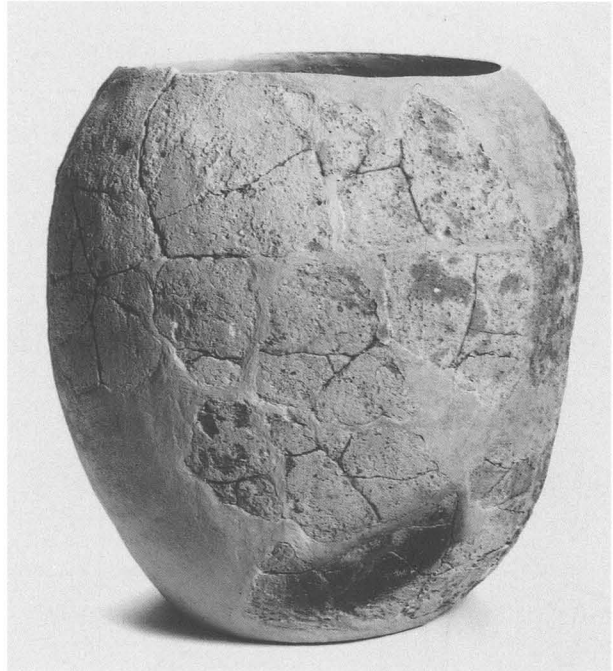
(2) 調査区全景2 (南半部)



(1) C-1区1 (包含層)



(2) C-1区3 (包含層)



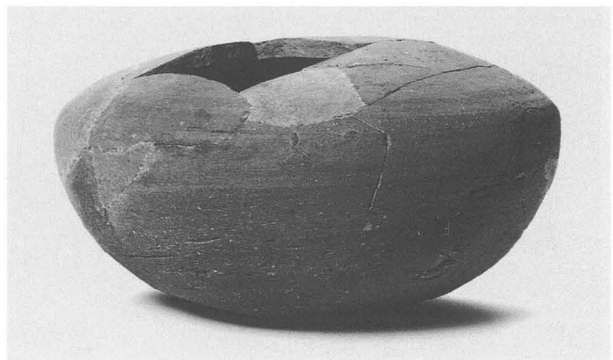
(3) C-2区4 (土坑2)



(4) C-2区12 (河川1)

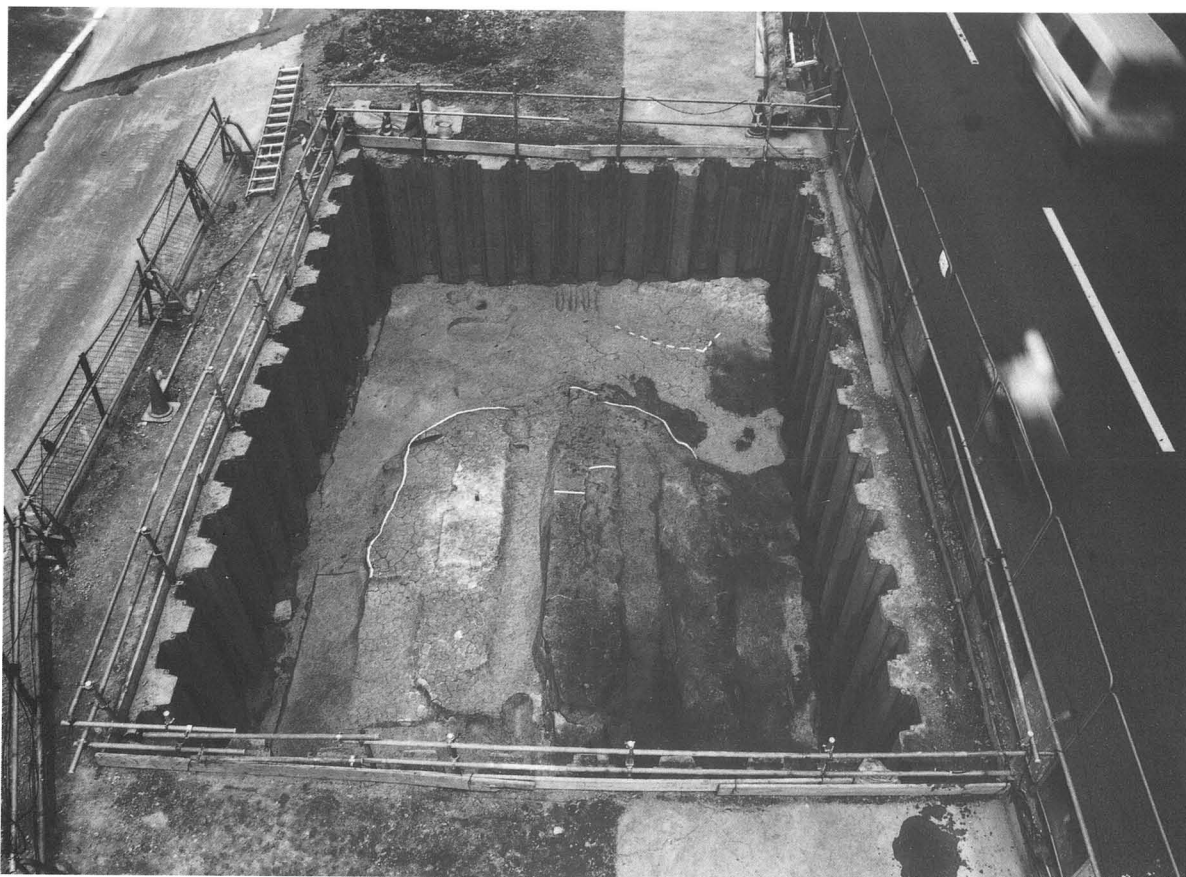


(5) C-2区5 (土坑6)



(6) C-2区7 (溝1)





(1) 調査区全景



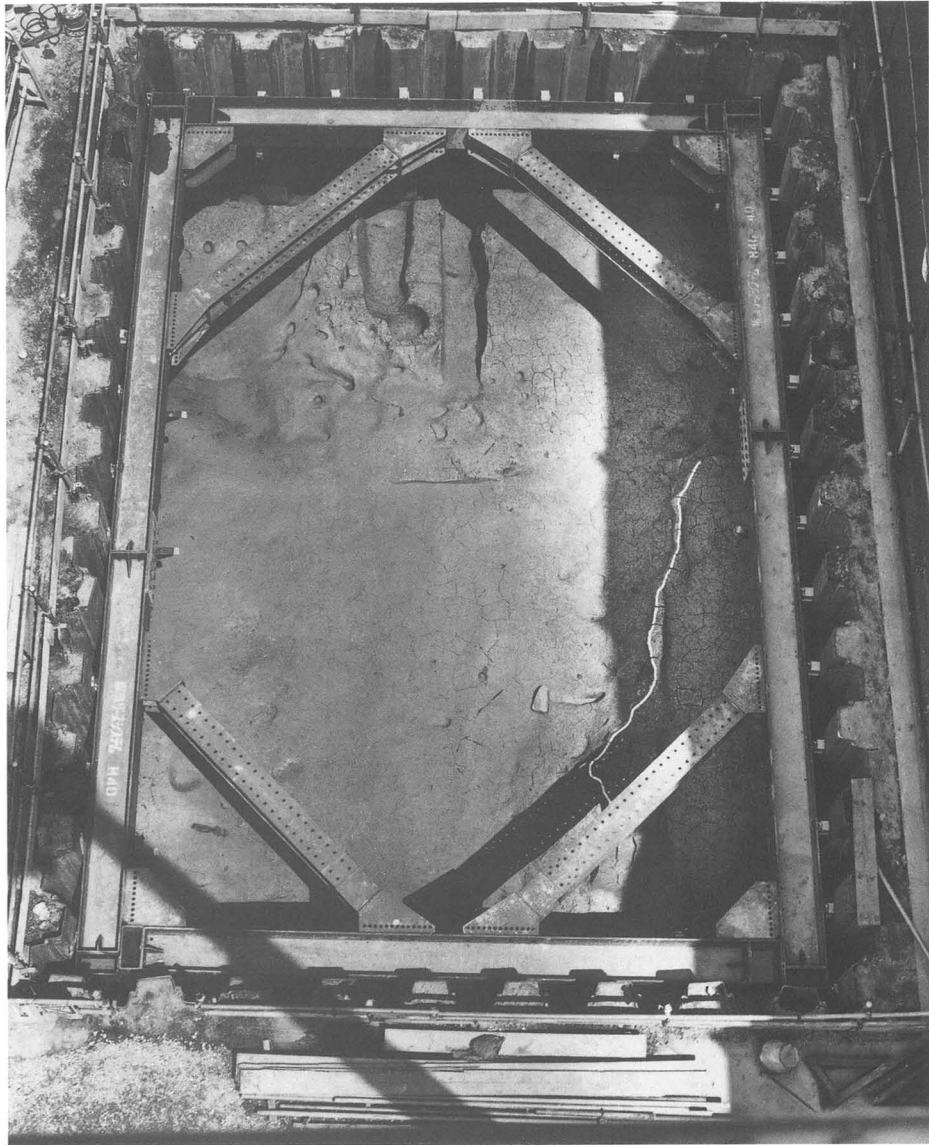
(2) 河川1断面



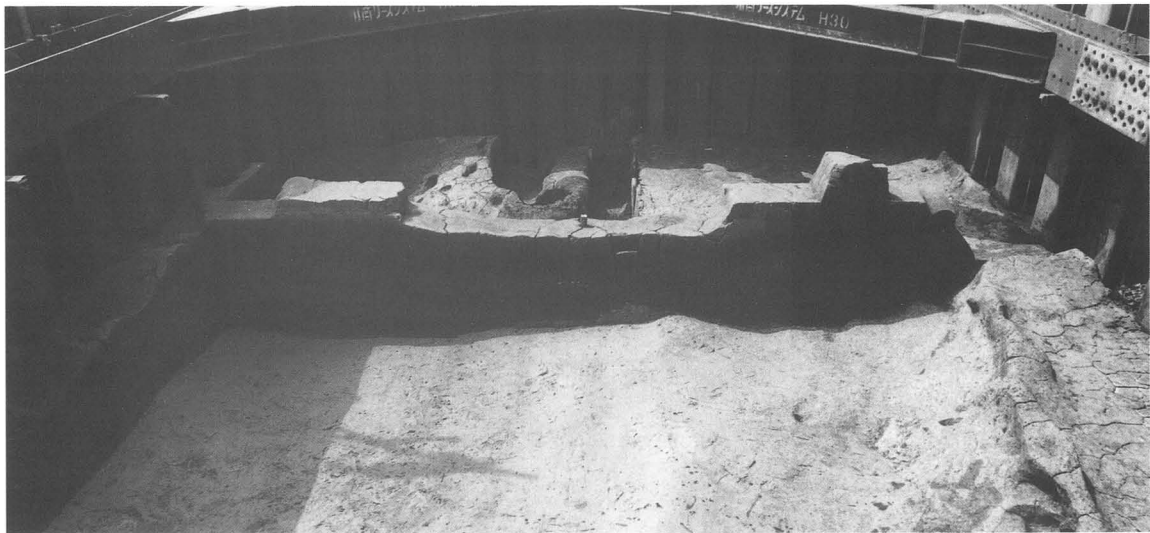
(1) 調査区全景



(2) 河川1断面



(1) 調査区全景



(2) 河川1断面





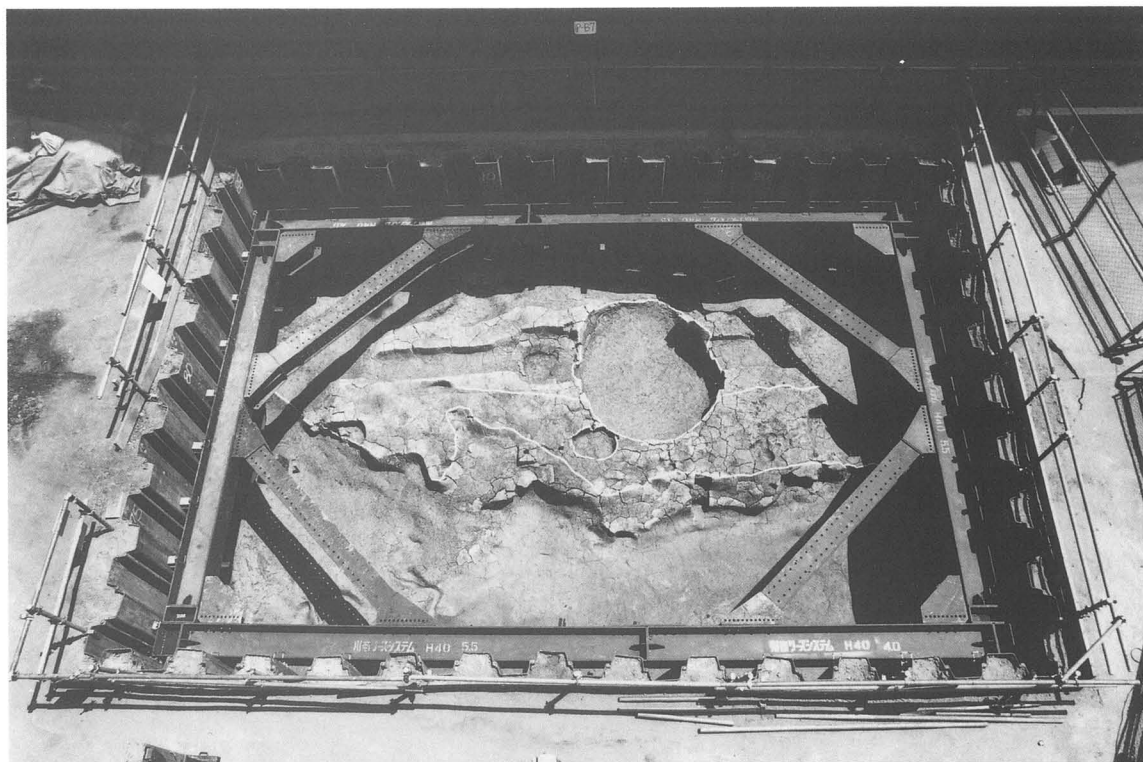
(1) 河川1 遺物出土状況



(2) 河川1 遺物出土状況  
(拡大1)



(3) 河川1 遺物出土状況  
(拡大2)



(1) 調査区全景



(2) 河川1断面



(1) 河川1上層遺物出土状況



図版 54  
D-6区遺構3



(1) 河川1中層遺物出土状況

(1) 河川1  
遺物出土状況1



(2) 河川1  
遺物出土状況2



(3) 河川1  
遺物出土状況3



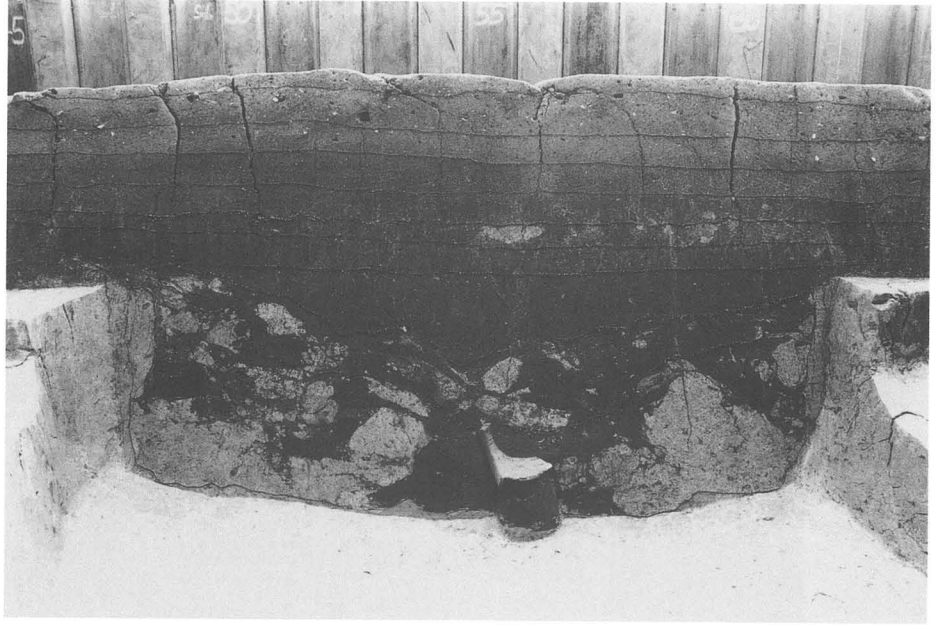


(1) 土坑1断面



(2) 土坑1遺物出土状況

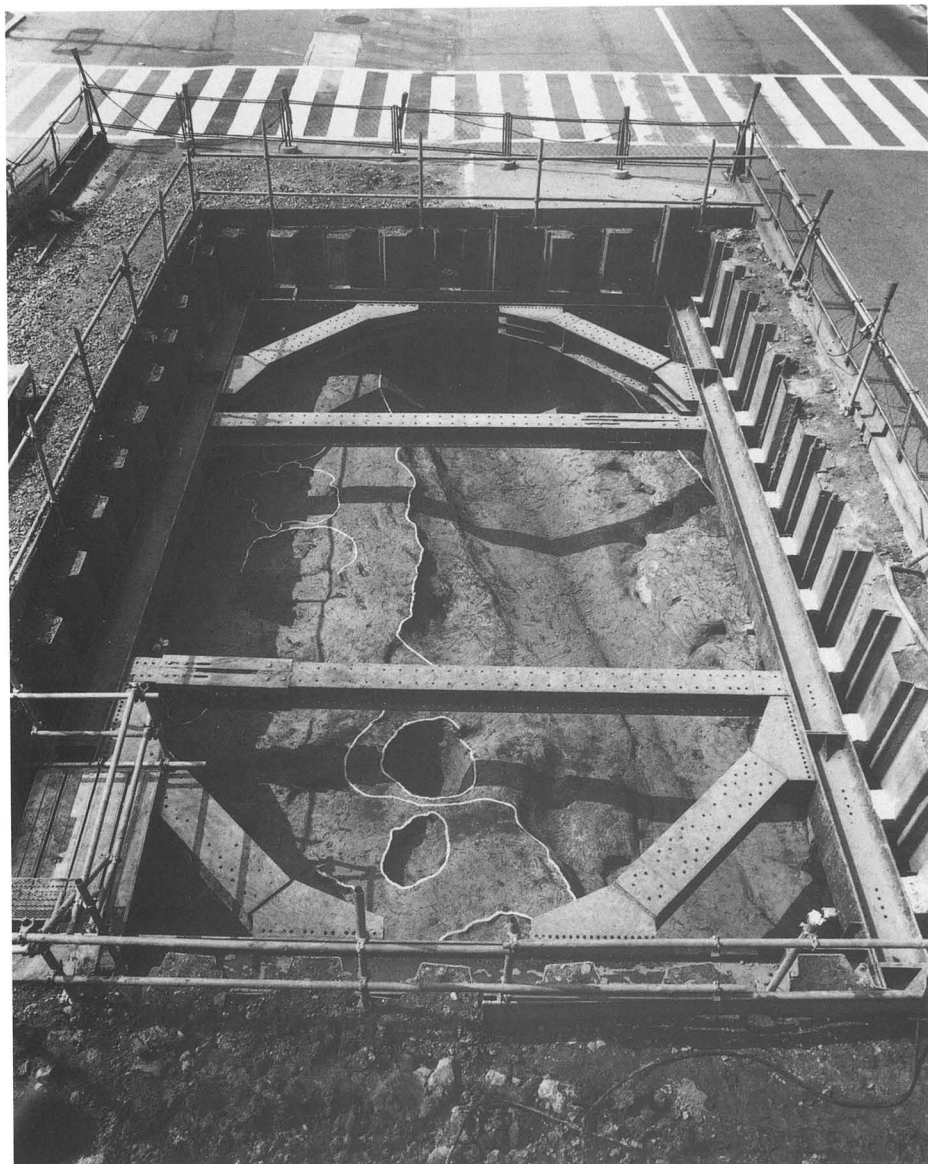




(1) 土坑2断面



(2) 土坑2遺物出土状況



(1) 調査区全景



(2) 河川1断面



(1) 河川1 遺物出土状況



(2) 河川1 遺物出土状況 (拡大1)



(3) 河川1 遺物出土状況 (拡大2)





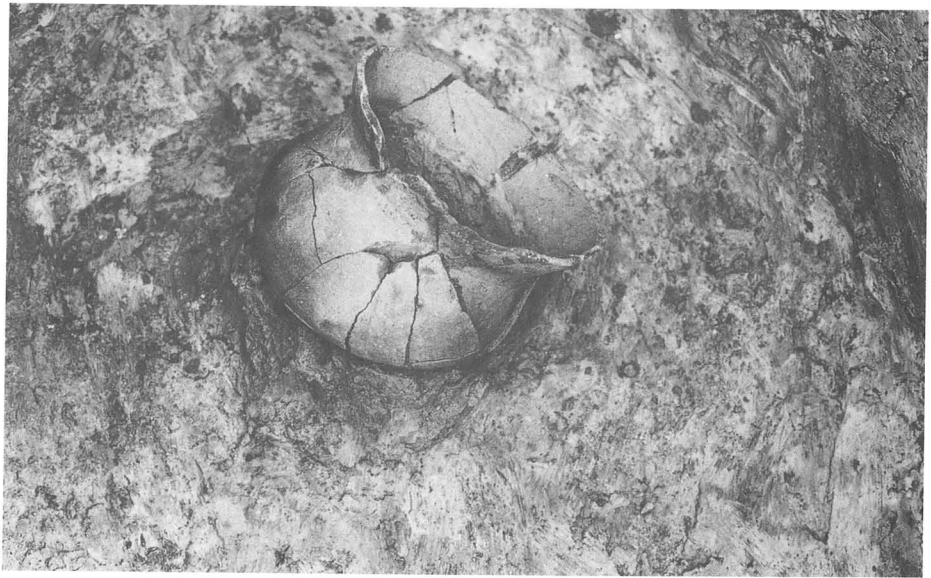
(1) 河川1 遺物出土状況



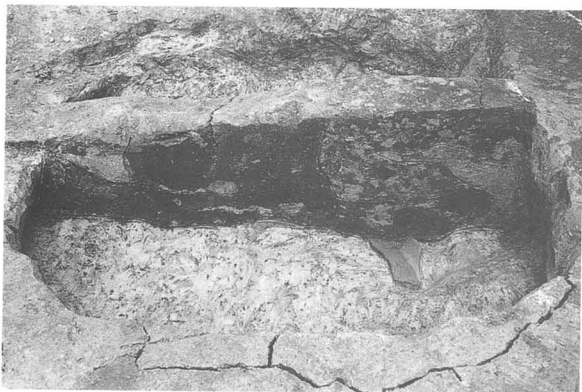
(2) 井戸1 断面



(1) 調査区全景



(2) 土坑2  
遺物出土状況



(3) 土坑6断面



(4) 土坑6 遺物出土状況



(1) 調査区全景

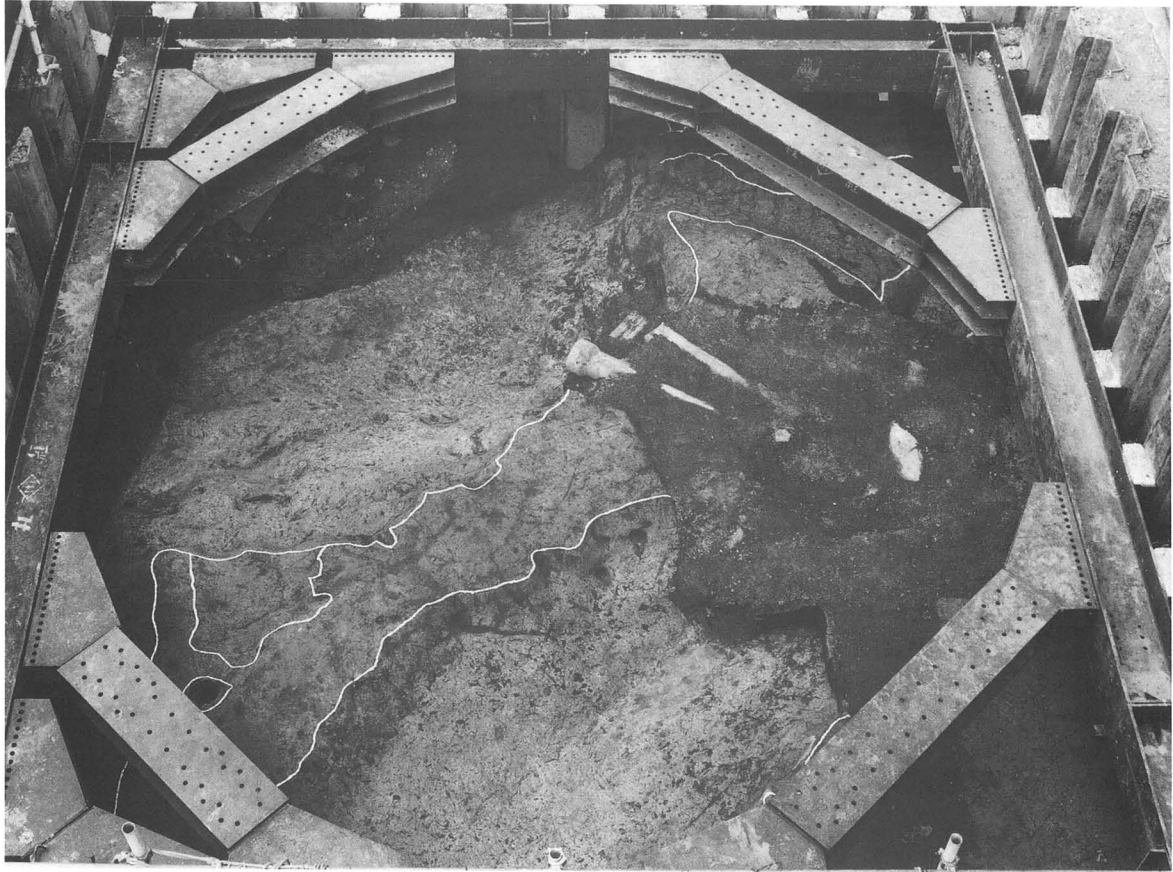


(2) 土坑10断面



(3) 土坑4 遺物出土状況

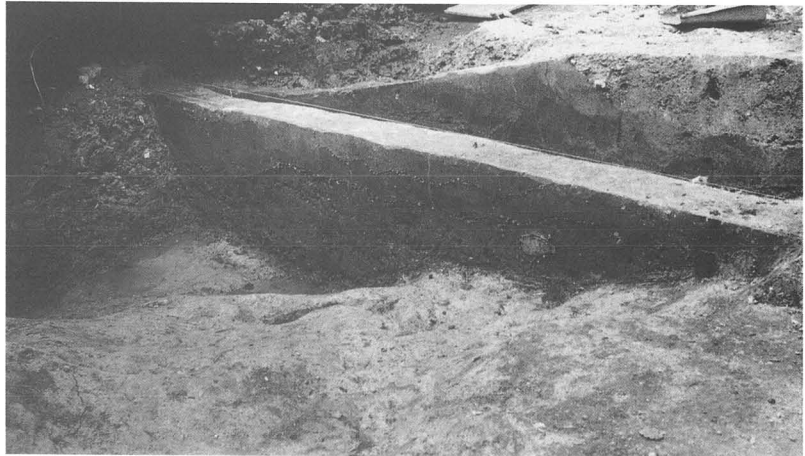




(1) 調査区全景



(2) 溝1断面



(3) 河川1断面



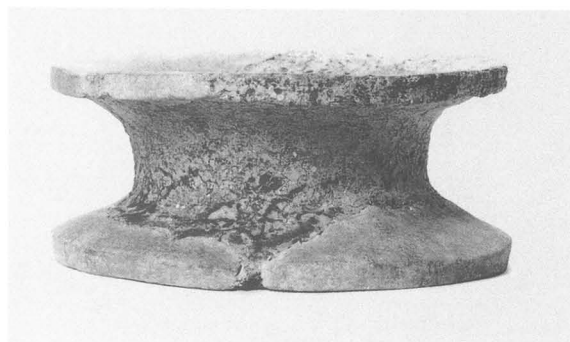
(1) D-2区1 (河川1)



(2) D-3区2 (河川1)



(3) D-5区3 (河川1上層)



(4) D-5区8 (河川1中層1)



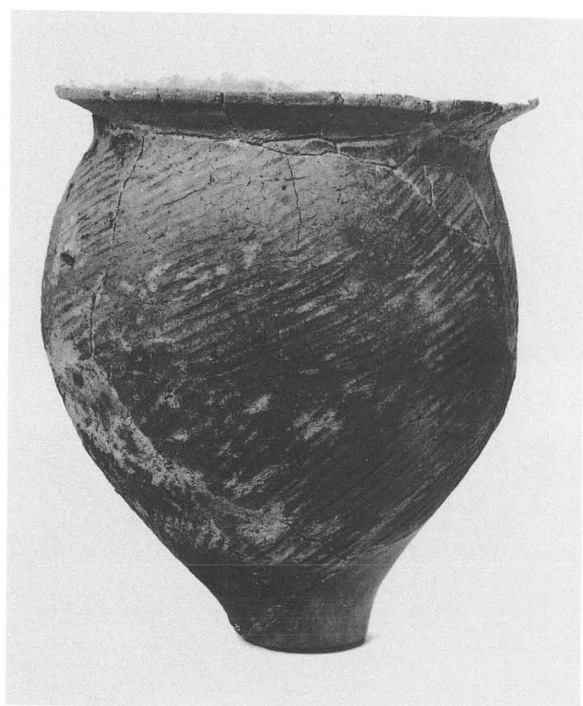
(5) D-5区9  
(河川1中層1)



(6) D-5区6  
(河川1中層1)



(1) 7 (河川1中層1)

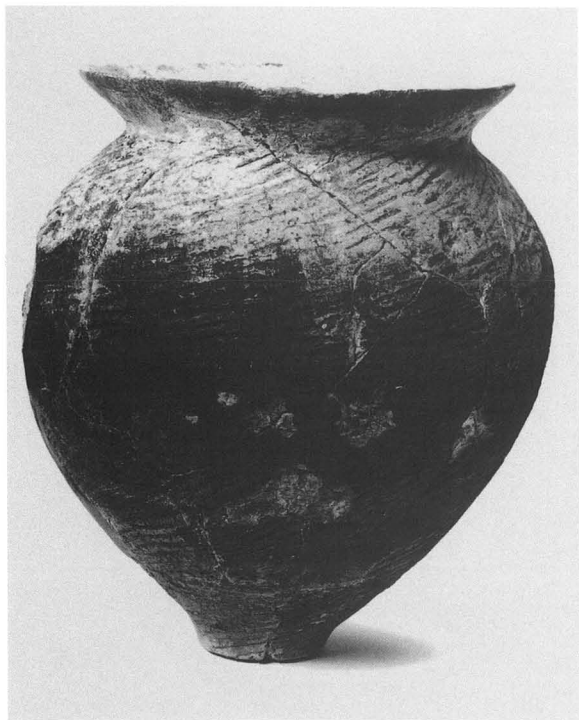


(2) 13 (河川1中層1)

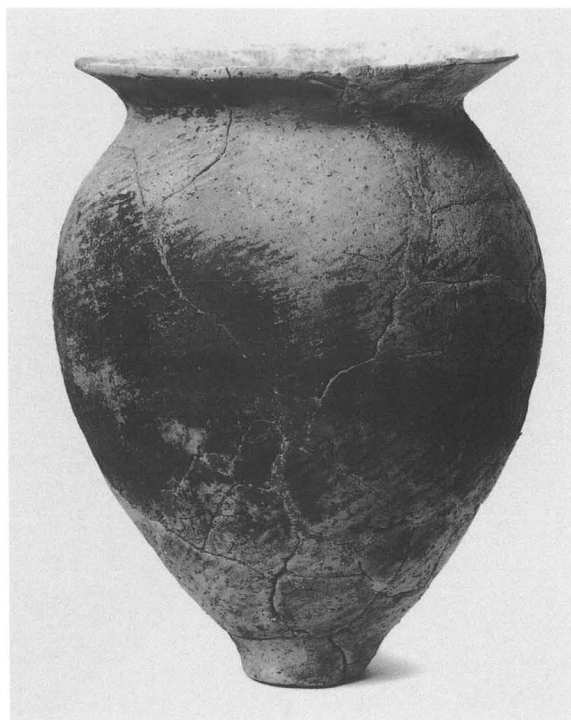


(3) 14 (河川1中層1)





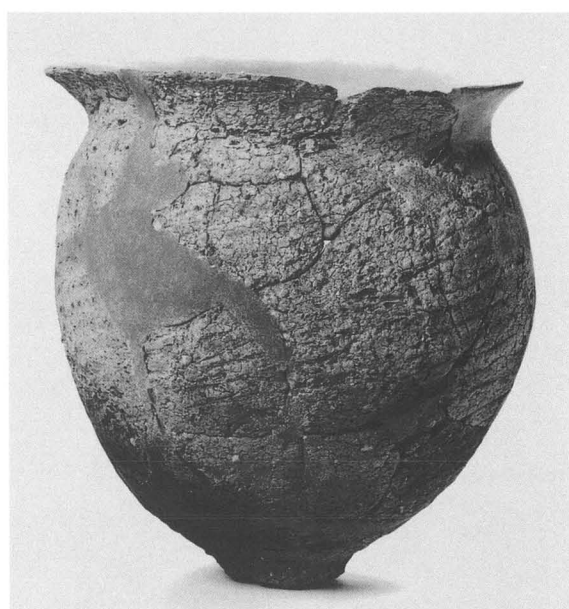
(1) 11 (河川1中層1)



(2) 12 (河川1中層1)



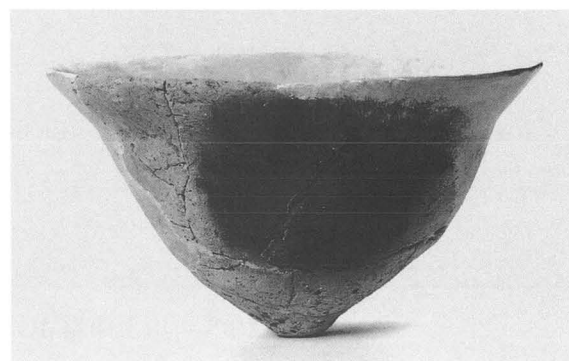
(3) 16 (河川1中層1)



(4) 18 (河川1中層1)



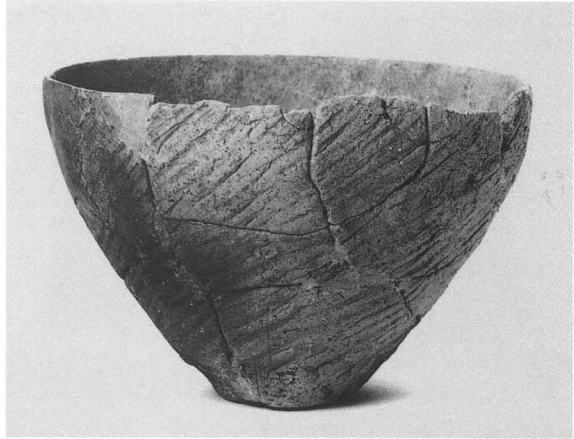
← (5) 19  
(河川1中層1)



(6) 27  
(河川1中層1)



(1) 28 (河川1中層1)



(2) 29 (河川1中層1)



(3) 30 (河川1中層1)



(4) 31 (河川1中層1)



(5) 32  
(河川1中層1)



(6) 34  
(河川1中層2)



(1) 36 (河川1中層2)



(2) 39 (河川1中層2)



(3) 51 (河川1中層2)



(4) 55 (河川1中層2)

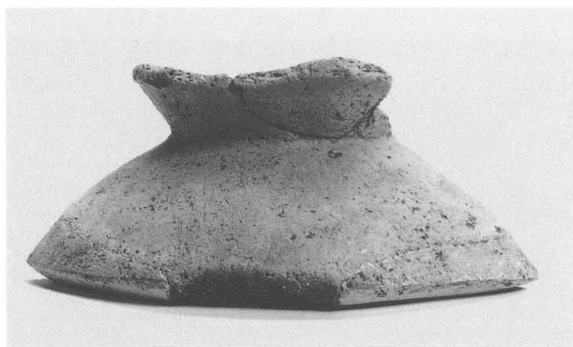


(5) 61 (河川1中層2)



(6) 59 (河川1中層2)

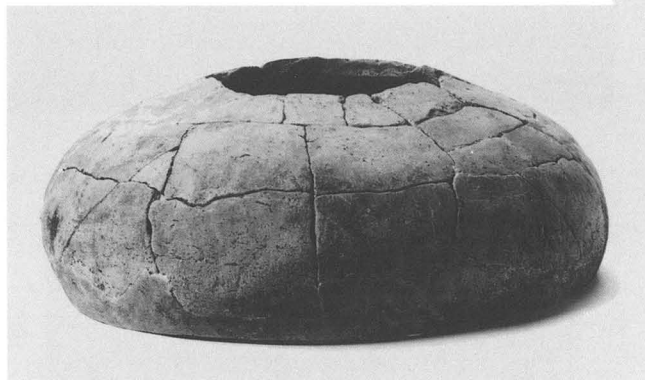




(1) 64 (河川1下層1)



(4) 69 (河川1下層1)



(2) 65 (河川1下層1)



(5) 73 (河川1下層2)



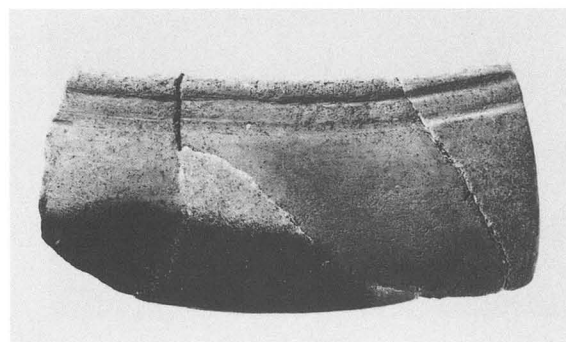
(3) 67  
(河川1下層1)



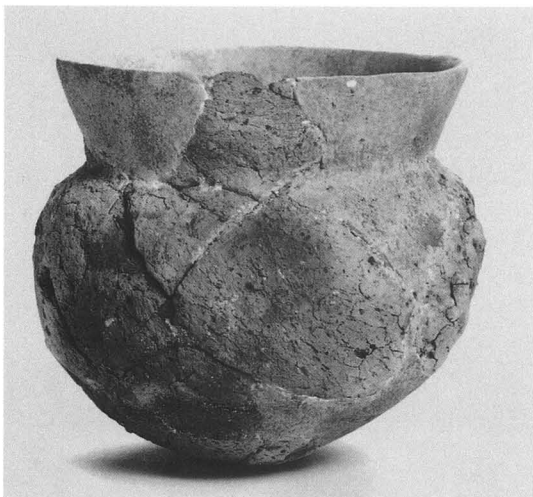
(6) 74 (河川1下層2)



(8) 77  
(河川1下層2)



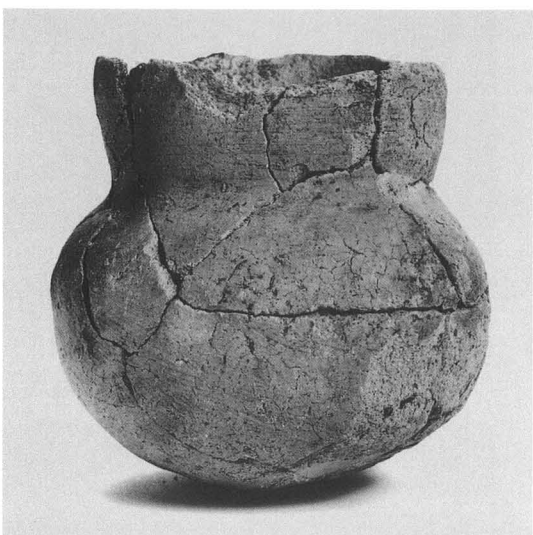
(7) 76 (河川1下層2)



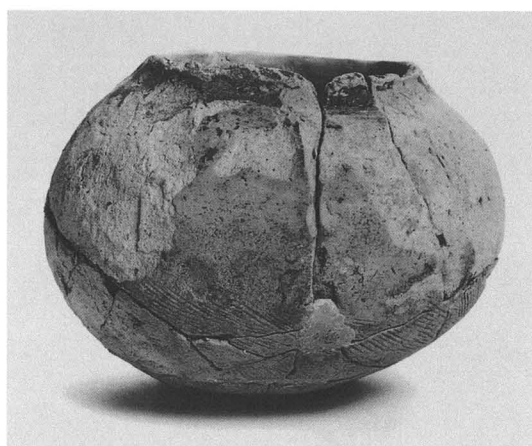
(1) 1 (土坑1)



(2) 2 (土坑2)



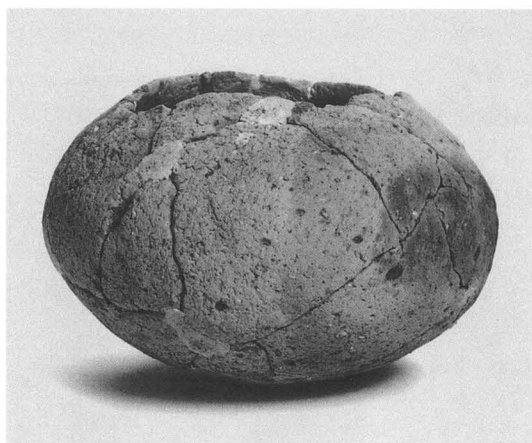
(3) 4 (河川1上層)



(4) 6 (河川1上層)



(5) 5 (河川1上層)



(6) 7 (河川1上層)



(1) 8 (河川1上層)



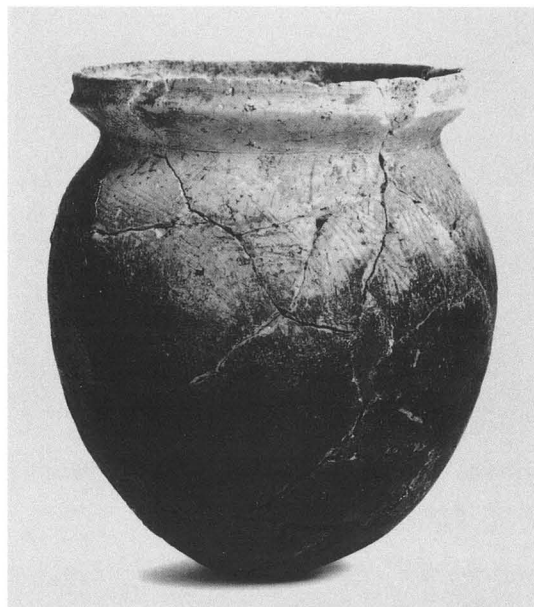
(2) 9 (河川1上層)



(4) 15 (河川1上層)



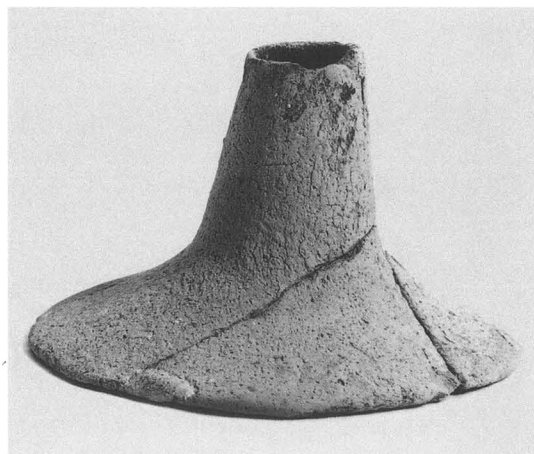
(6) 17 (河川1上層)



(3) 11 (河川1上層)



(5) 16 (河川1上層)



(7) 19 (河川1上層)

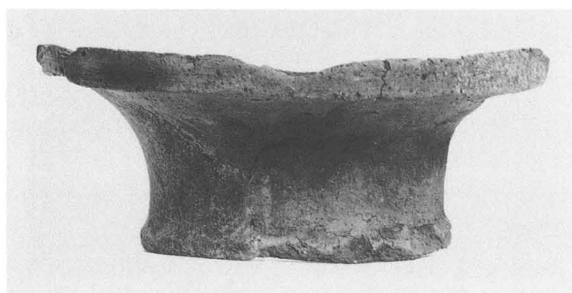




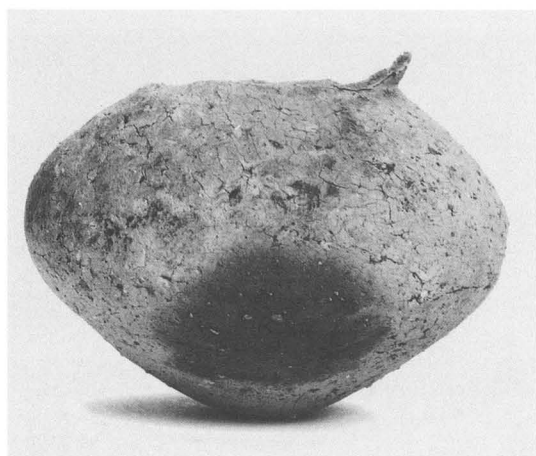
(1) 20 (河川1上層)



(2) 21 (河川1中層1)



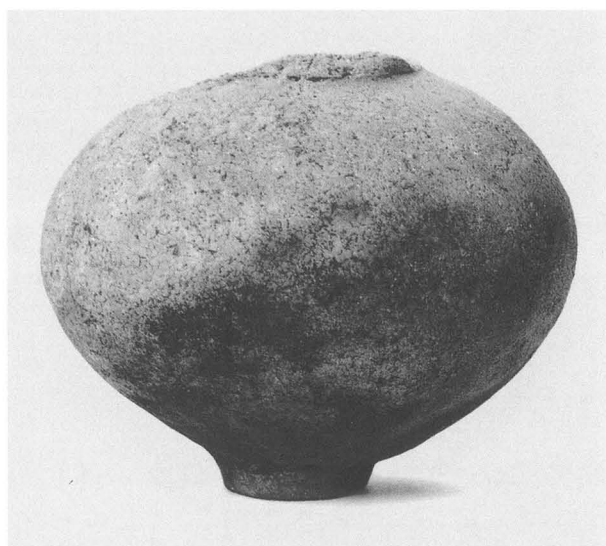
(3) 23 (河川1中層1)



(4) 30 (河川1中層1)



(5) 27 (河川1中層1)



(6) 32 (河川1中層1)



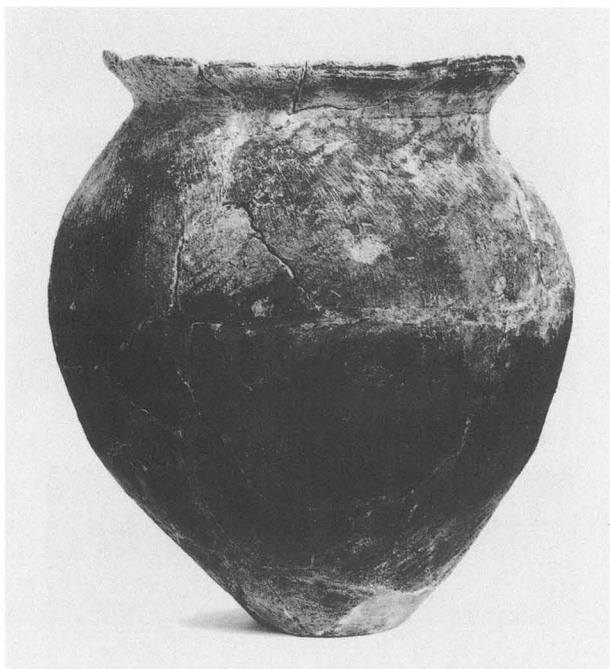
(1) 34 (河川1中層1)



(3) 55 (河川1中層1)



(4) 56 (河川1中層1)



(2) 36 (河川1中層1)



(5) 53 (河川1中層1)



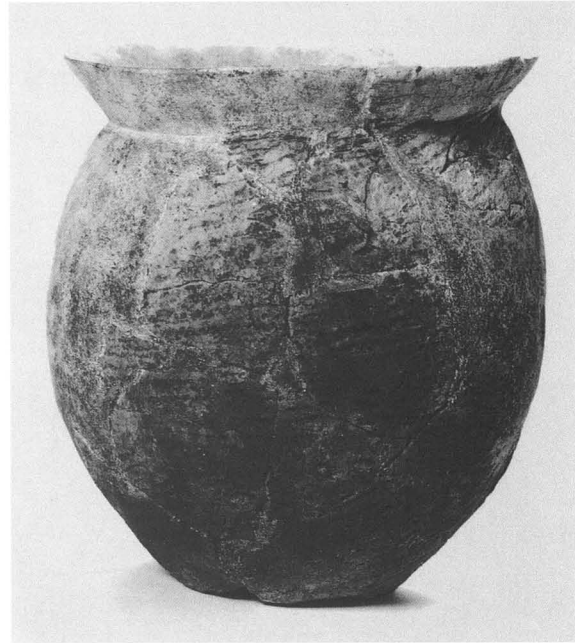
(1) 35 (河川1中層1)



(2) 40 (河川1中層1)



(3) 49 (河川1中層1)



(4) 50 (河川1中層1)



(5) 51 (河川1中層1)



(6) 52 (河川1中層1)





(1) 39 (河川1中層1)



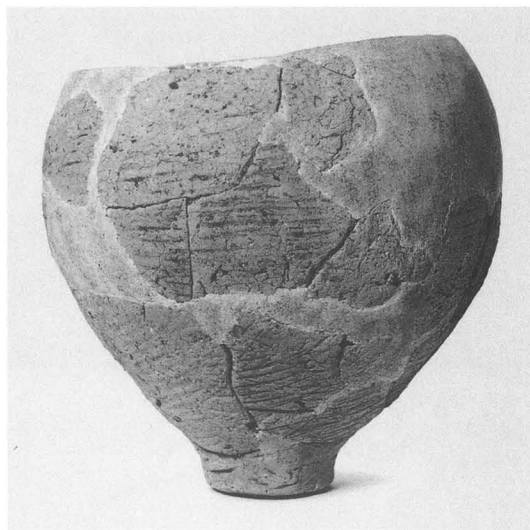
(2) 42 (河川1中層1)



(3) 42 (体部線刻拡大)



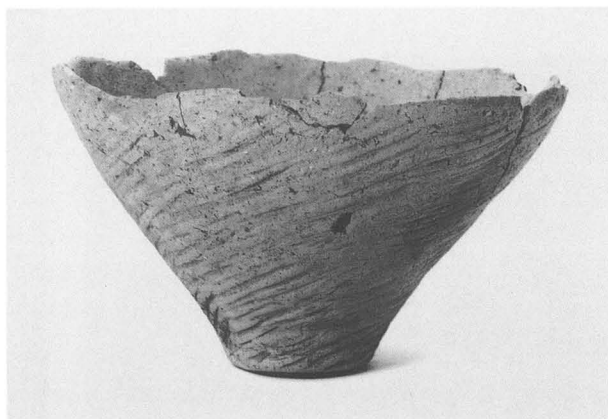
(4) 57 (河川1中層1)



(5) 47 (河川1中層1)



(1) 60 (河川1中層1)



(2) 61 (河川1中層1)



(3) 62 (河川1中層1)



(4) 63 (河川1中層1)



(5) 72 (河川1中層1)



(6) 76 (河川1中層1)



(1) 69 (河川1中層1)



(2) 70 (河川1中層1)



(3) 65 (河川1中層1)



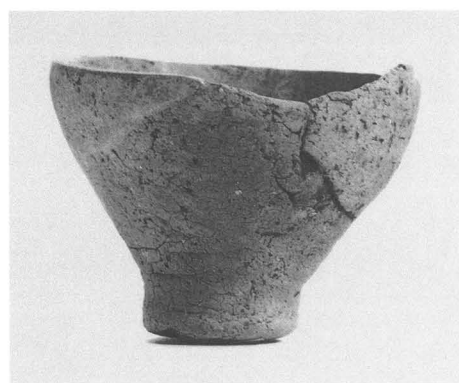
(4) 71 (河川1中層1)



(5) 67 (河川1中層1)



(7) 77 (河川1中層2)



(6) 74  
(河川1中層1)



(8) 79 (河川1中層2)

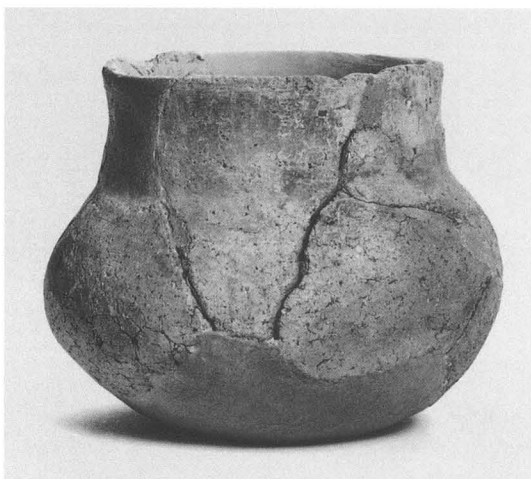




(1) 81 (河川1中層2)



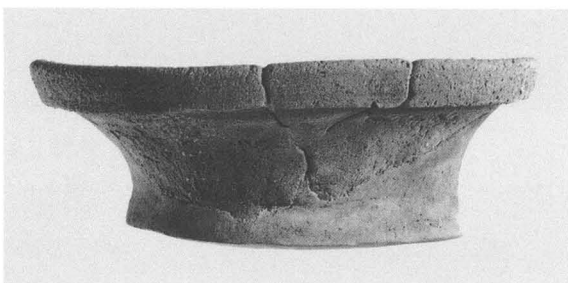
(2) 87 (河川1中層2)



(3) 90 (河川1下層)



(4) 95 (河川1下層)

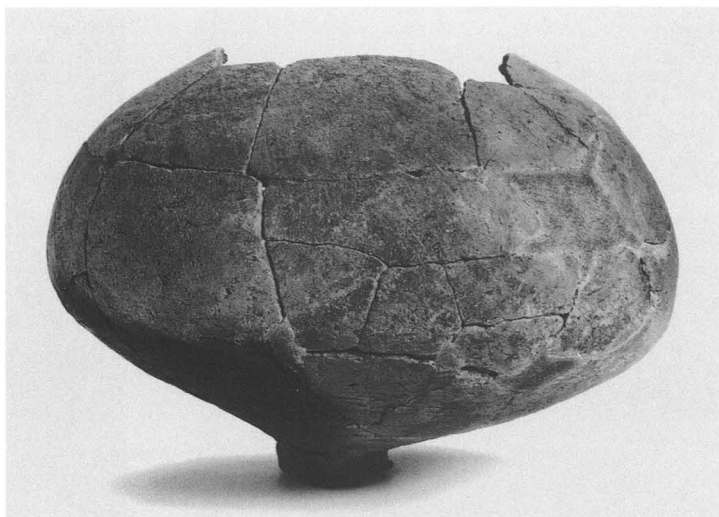


(5) 88 (河川1下層)

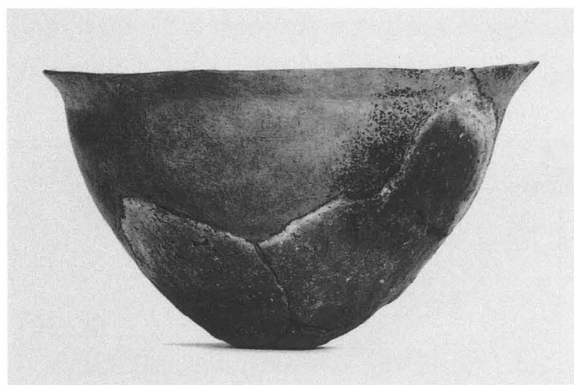


(6) 98 (河川1下層)

(1) 91 (河川1下層)



(2) 106 (河川1下層)



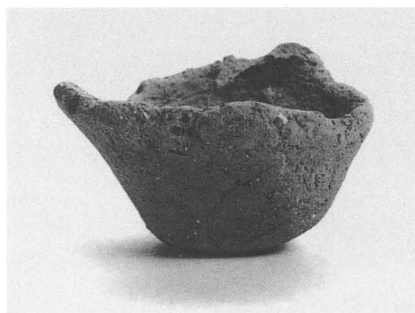
(3) 109 (河川1下層)



(4) 112 (河川1下層)



(5) 110 (河川1下層)



(6) 115 (河川1下層)



(1) 4 (河川1上層)



(2) 5 (河川1上層)



(3) 8 (河川1上層)



(5) 14 (河川1上層)



(6) 15 (河川1上層)

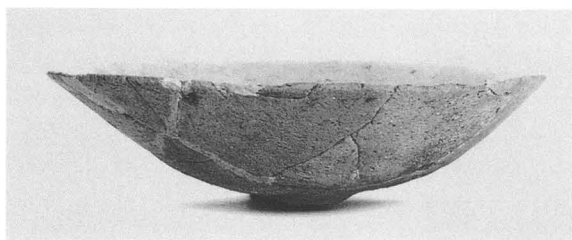


(4) 10 (河川1上層)



(7) 18 (河川1上層)

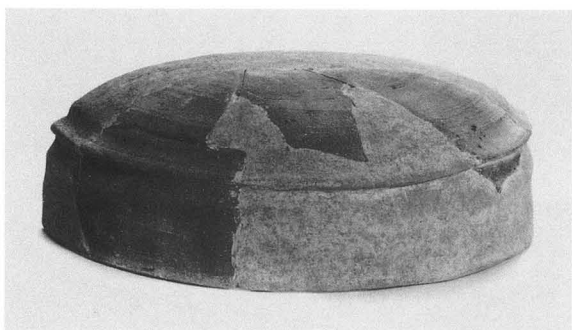




(1) 19 (河川1上層)



(2) 21 (河川1上層)



(3) 26 (河川1上層)



(4) 20 (河川1上層)



(5) 22 (河川1上層)



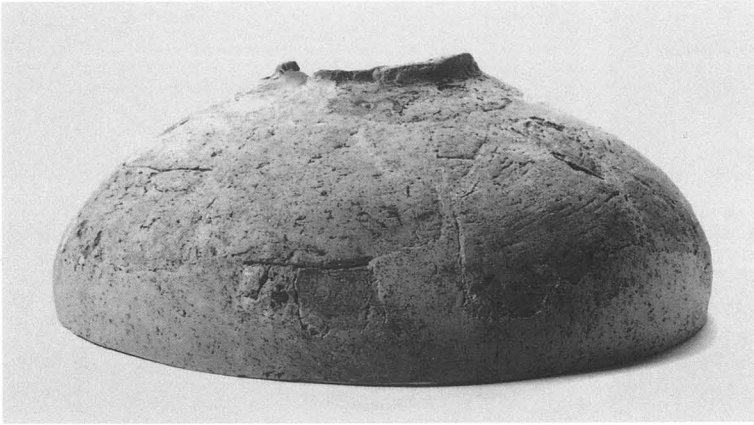
(6) 31 (河川1中層)



(7) 29 (河川1中層)



(8) 30 (河川1中層)



(1) 38 (河川1中層)



(2) 40 (河川1中層)



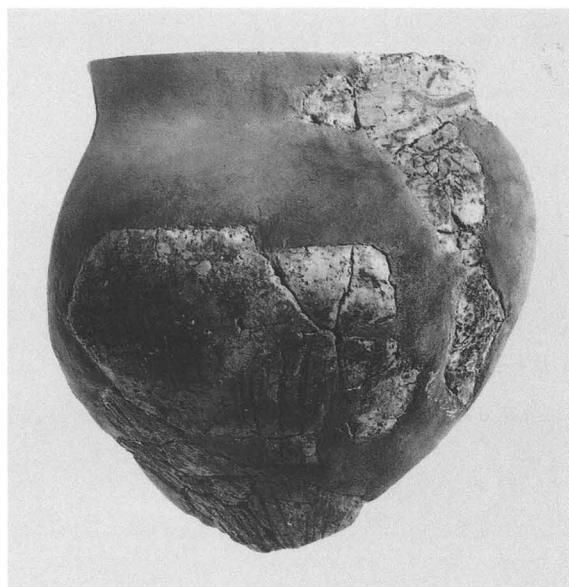
(3) 41 (河川1中層)



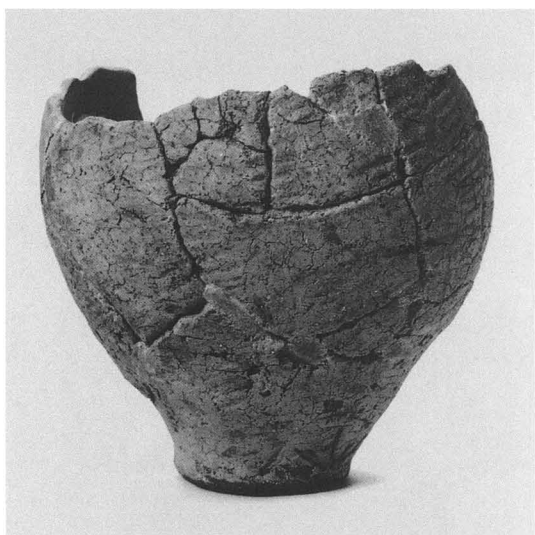
(1) 53 (河川1中層)



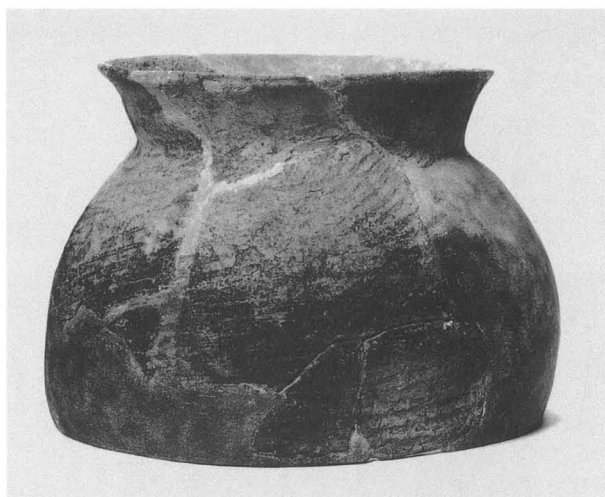
(2) 62 (河川1下層)



(3) 70 (河川1下層)



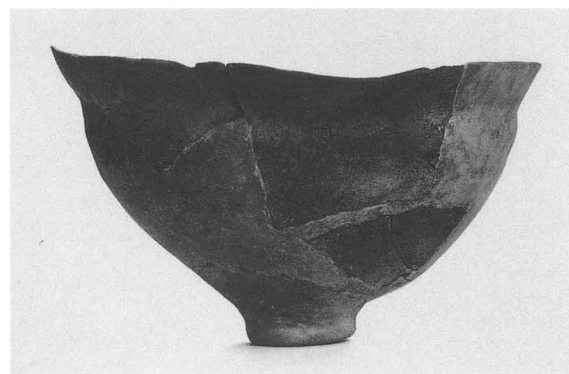
(4) 74 (河川1下層)



(5) 78 (河川1下層)



(6) 75 (河川1下層)

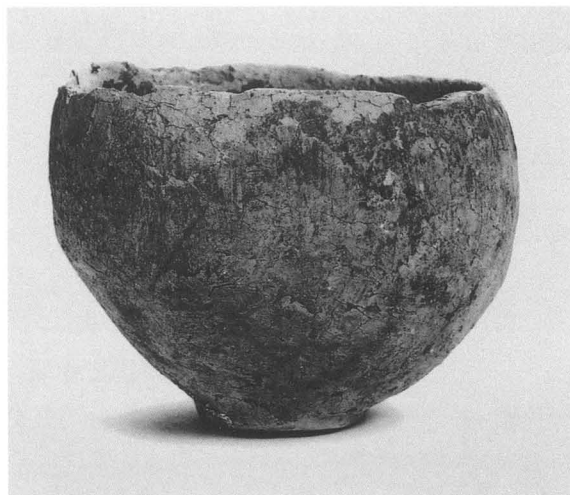


(7) 83 (河川1下層)





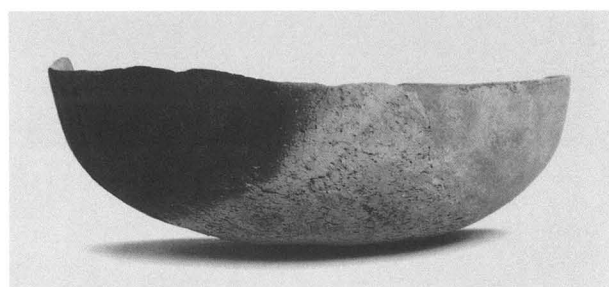
(1) 85 (河川1下層)



(2) 86 (河川1下層)



(3) 87 (河川1下層)



(4) 92 (河川1下層)



(5) 94 (河川1下層)



(6) 95 (河川1下層)



(1) D-8区2 (土坑1)



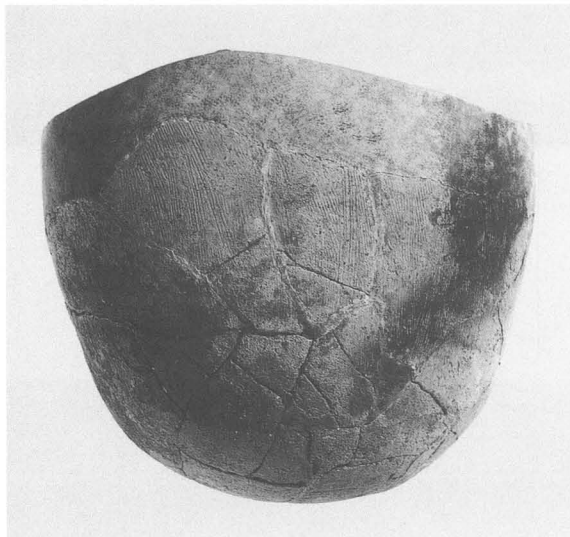
(4) D-9区7 (土坑6)



(2) D-8区6 (土坑2)



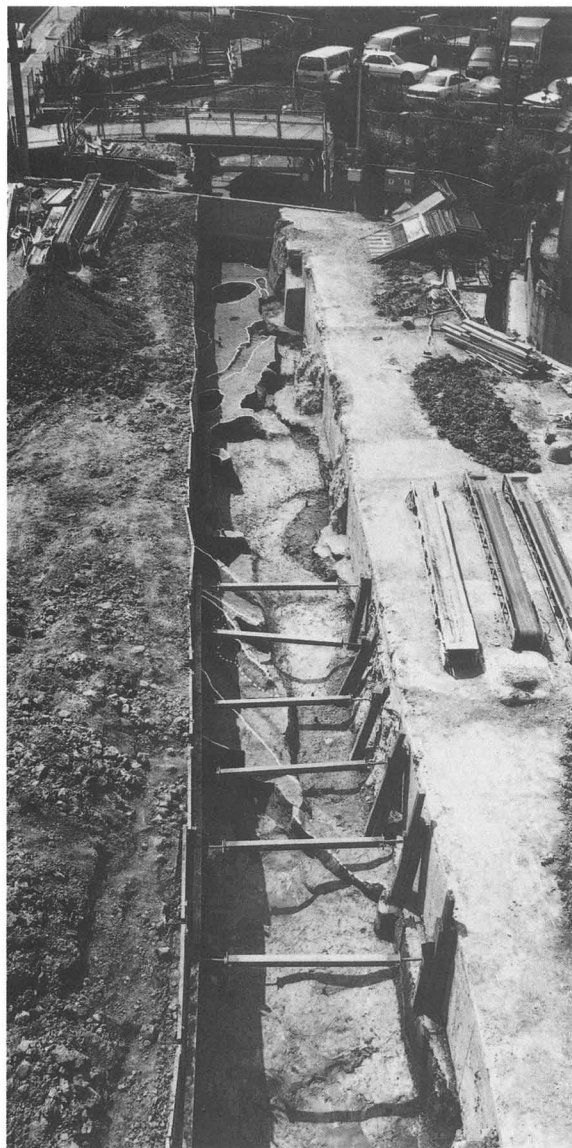
(5) D-9区5 (土坑4)



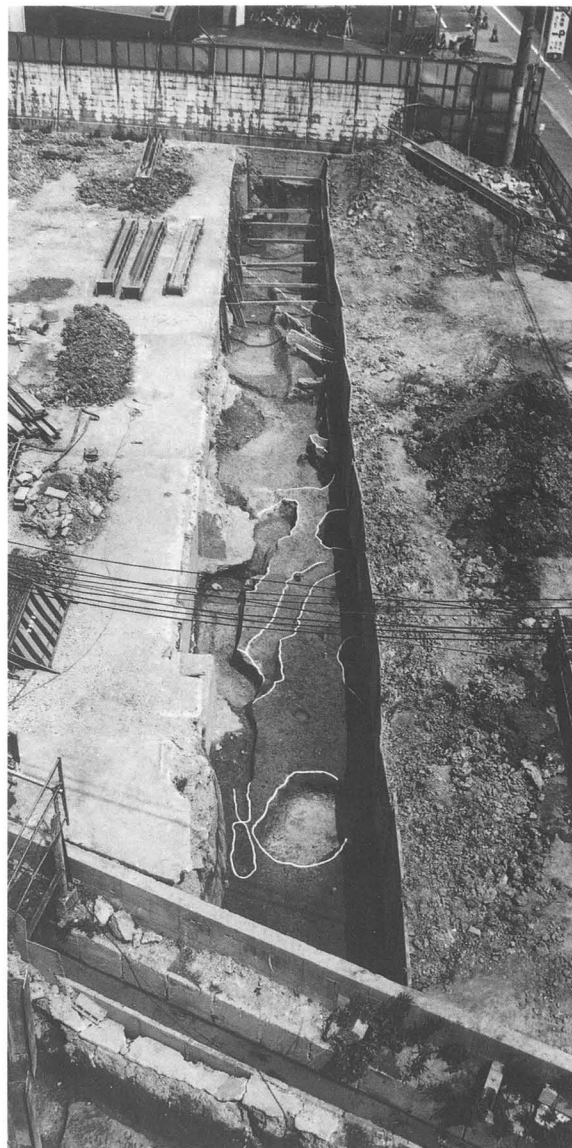
(3) D-8区8 (土坑5)



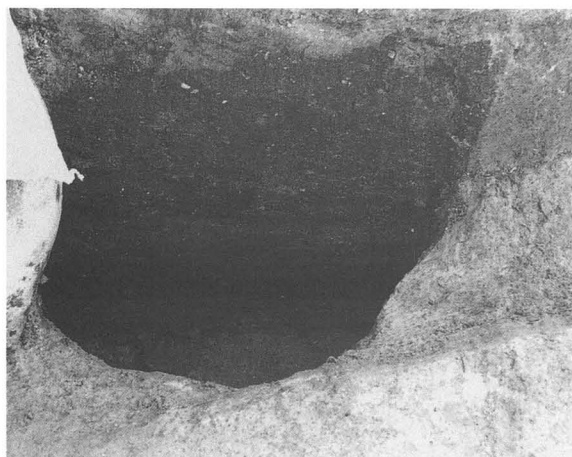
(6) D-10区2 (河川1)



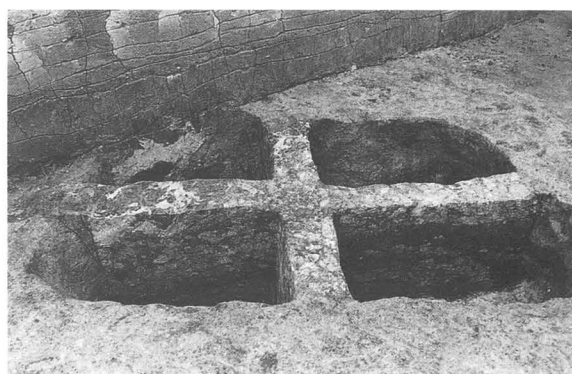
(1) 北区全景1 (北から)



(2) 北区全景2 (南から)

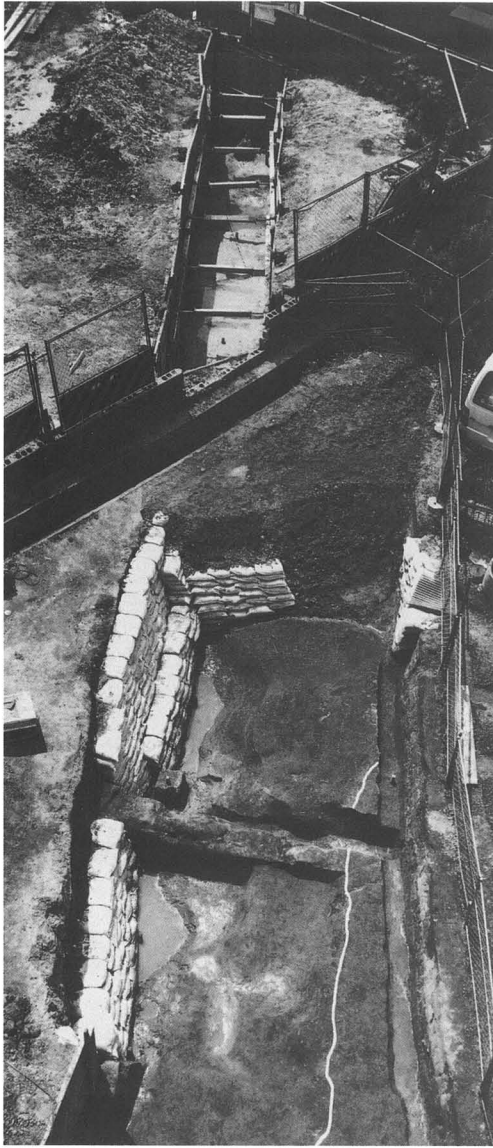


(3) 井戸1断面



(4) 土坑4断面





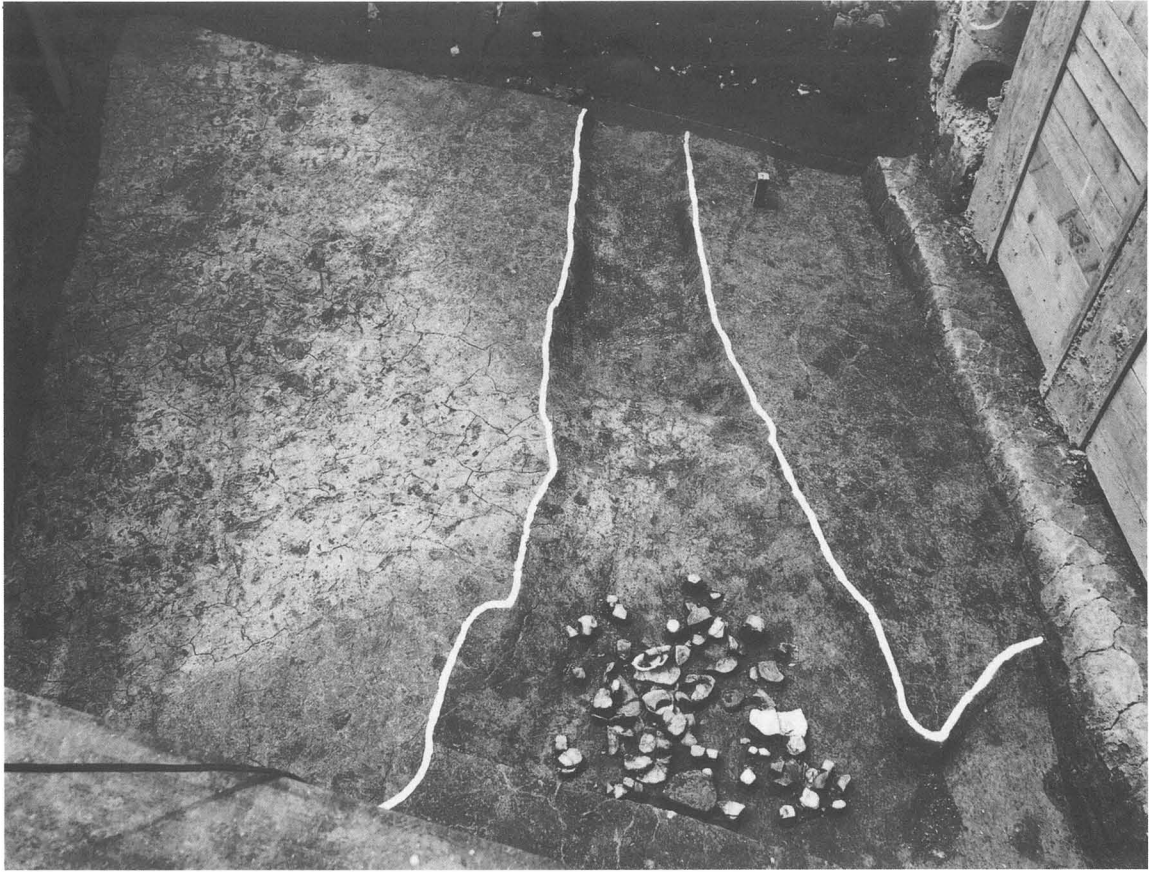
(1) 中央区・南区全景



(2) 溝5・6全景



(3) 溝5・6断面



(1) 土坑1・溝1全景



(2) 土坑1遺物出土状況

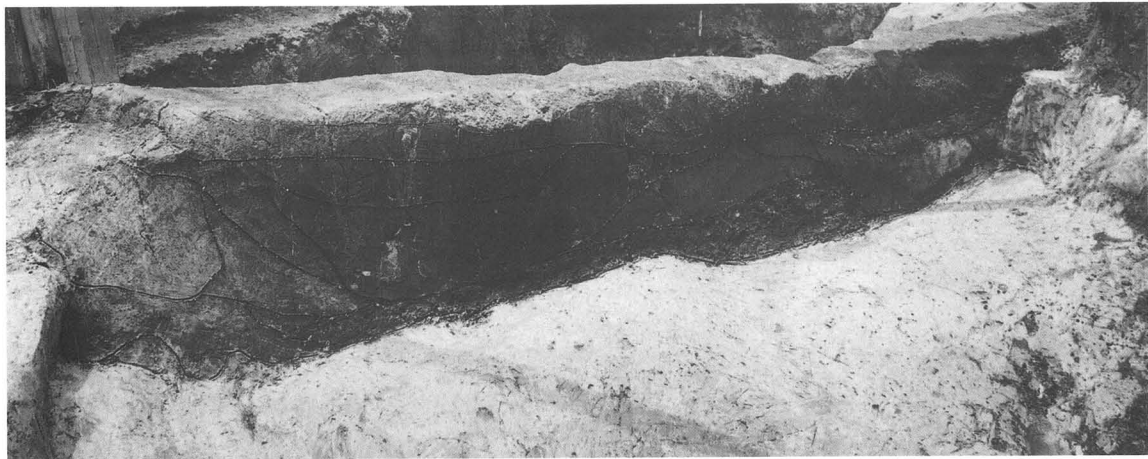


(1) 土坑2

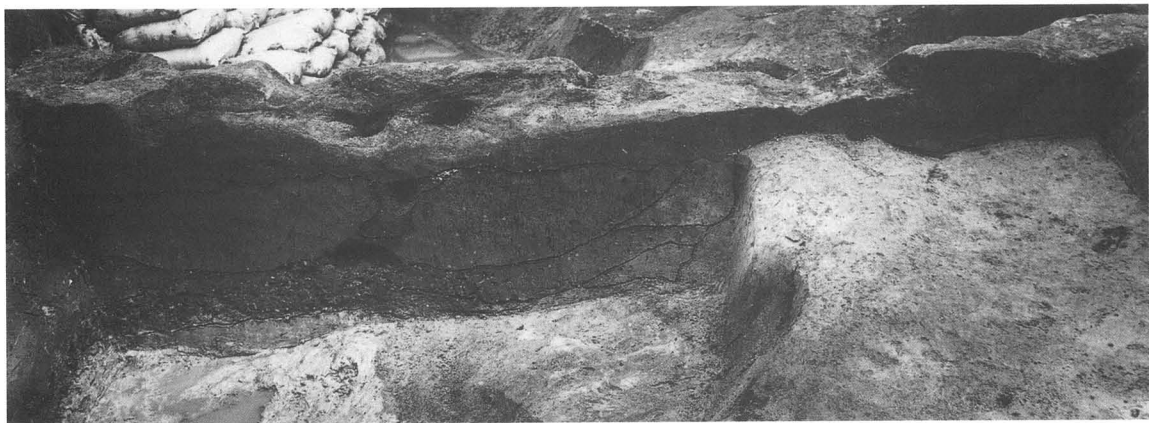


(2) 土坑2 遺物出土状況





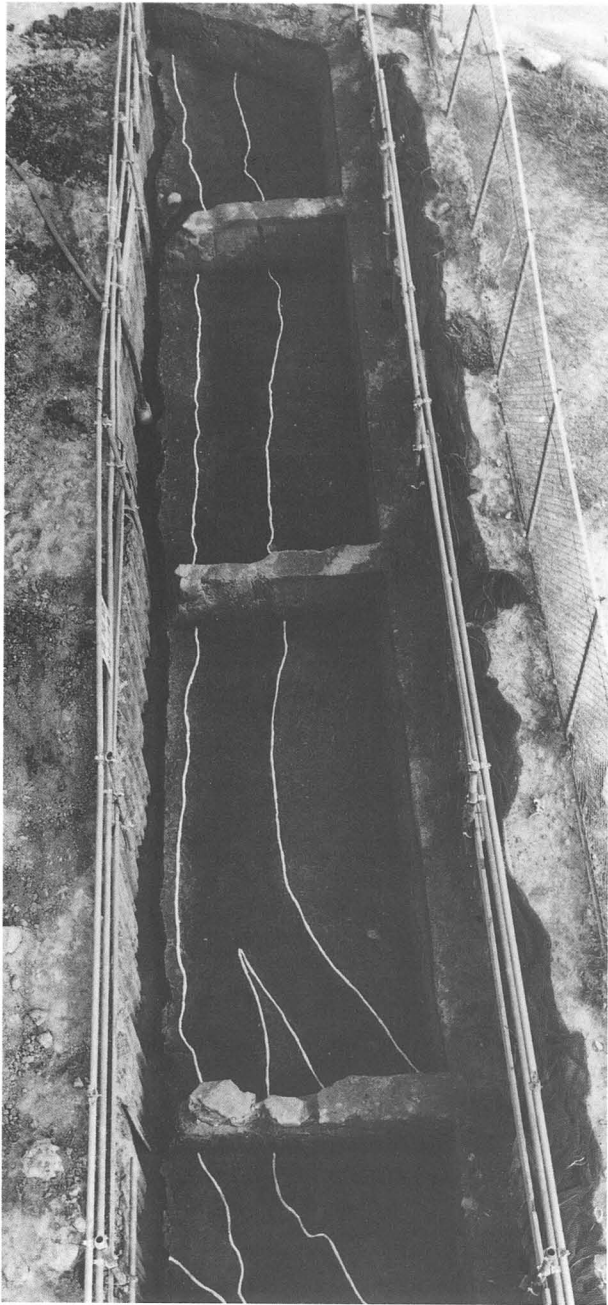
(1) 河川1断面



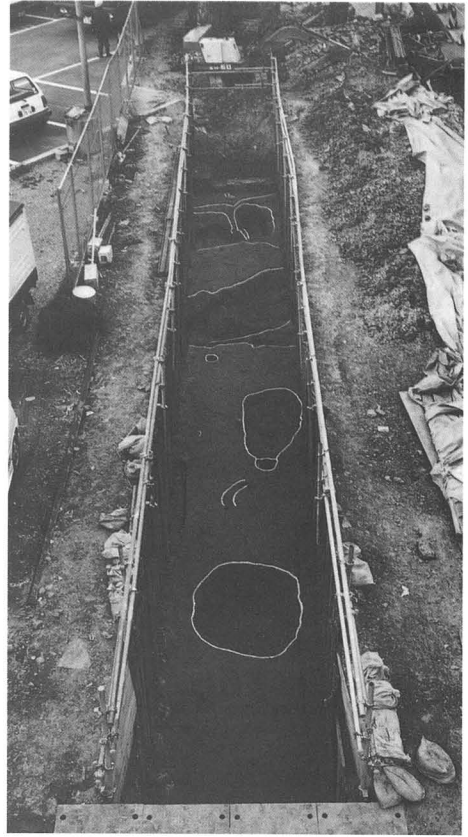
(2) 河川2断面 (中央区)



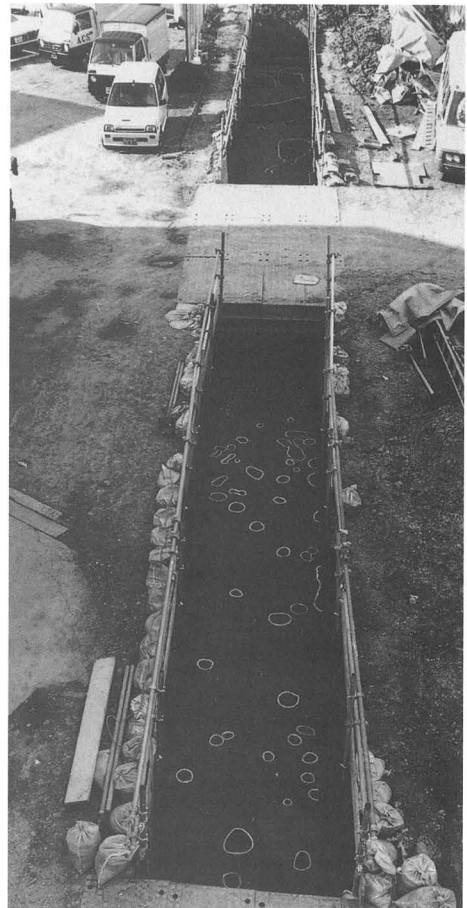
(3) 河川2上層遺物出土状況 (南区)



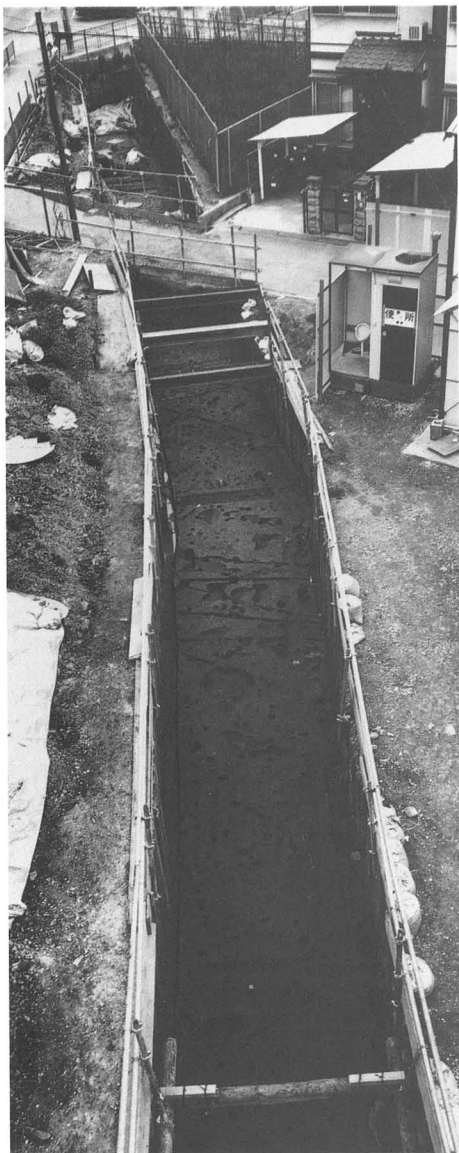
(1) 調査区北部全景 (溝1)



(2) 調査区中央部全景 1



(3) 調査区中央部全景 2 →



(1) 調査区南部全景 1



(2) 調査区南部全景 2



(3) 土坑 8 断面

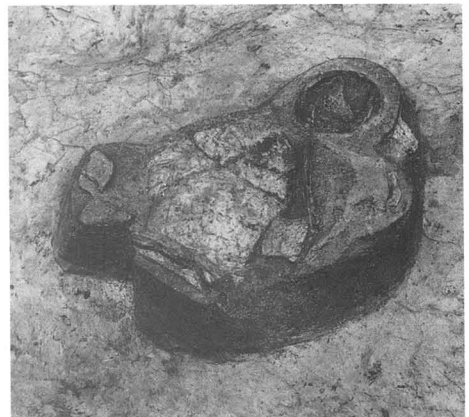




(1) 土坑 3



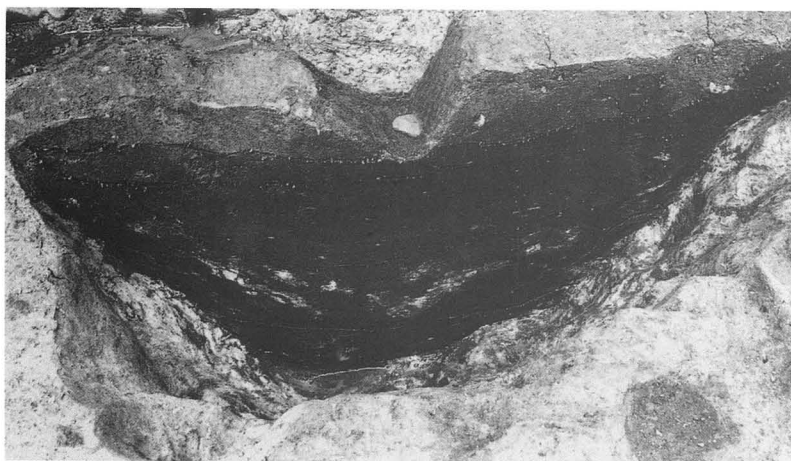
(2) 土坑 4



(3) 土坑 4 遺物出土状況



(1) 土坑5 遺物出土状況



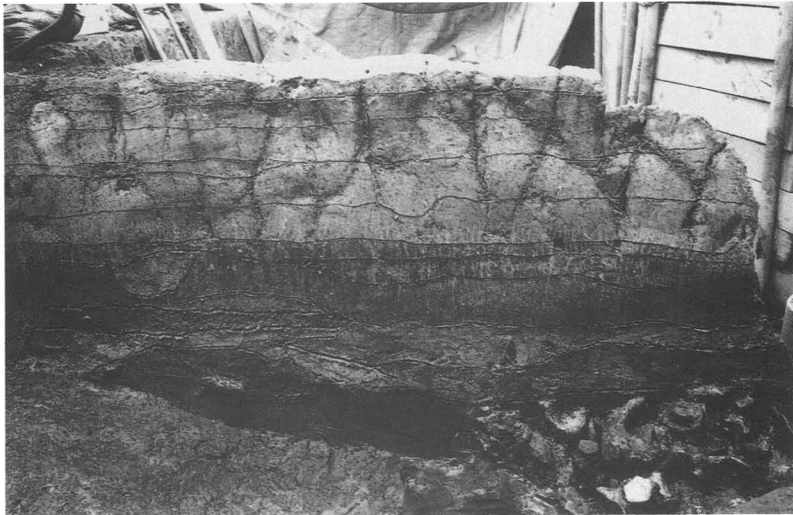
(2) 土坑5 断面



(3) 土坑5 完掘状況

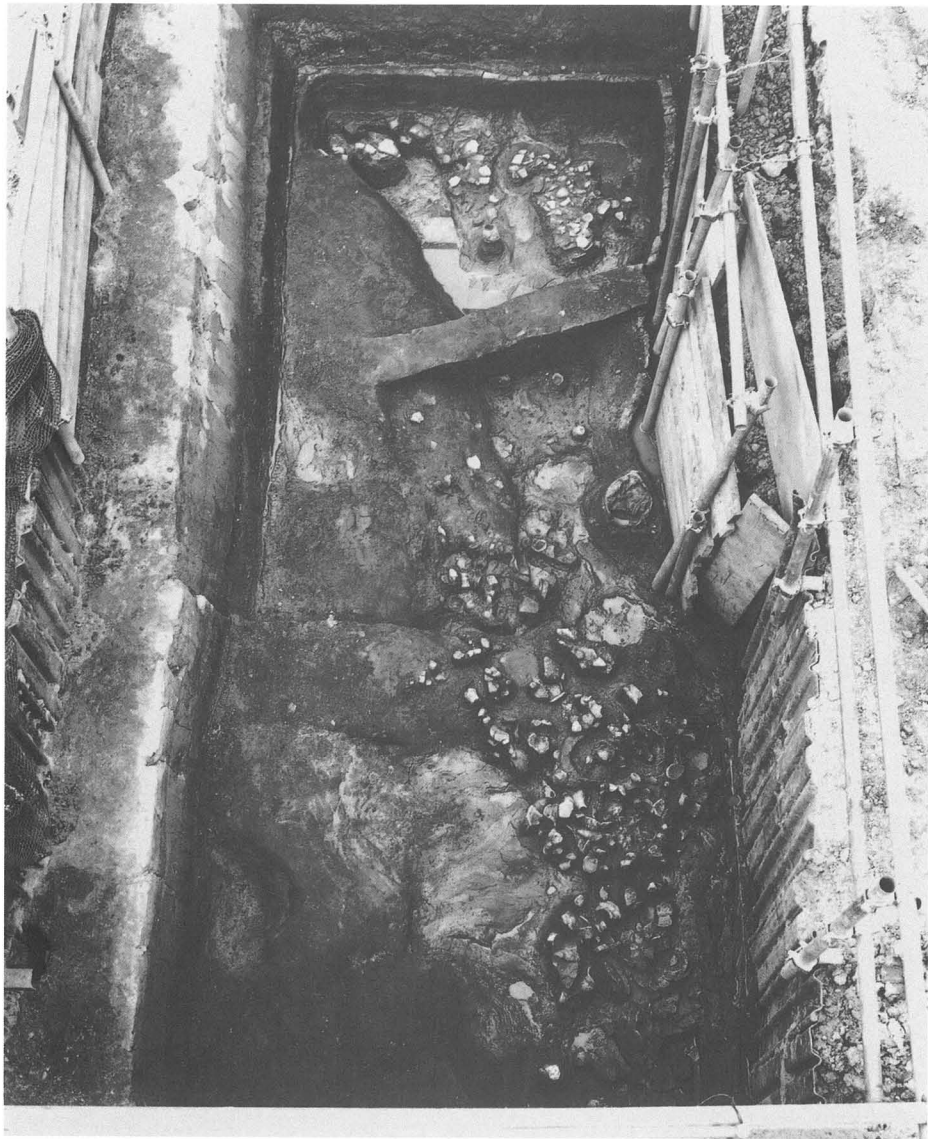


(1) 河川1 遺物出土状況 (中層)

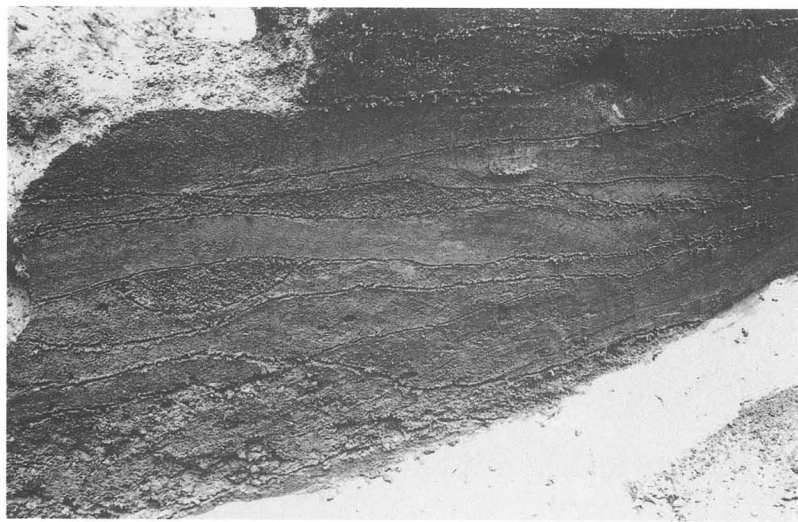


(2) 河川1 断面 (上~中層)





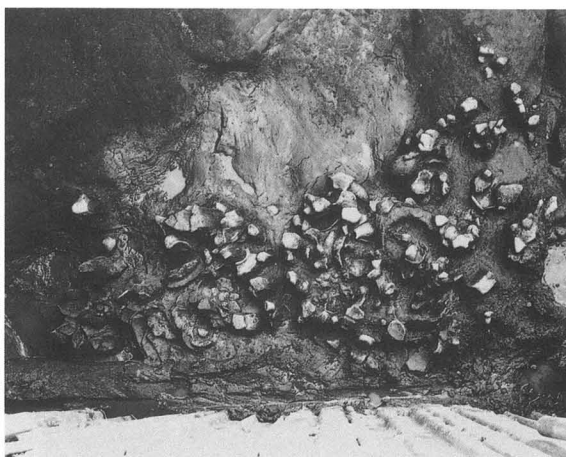
(1) 河川1 遺物出土状況 (下層)



(2) 河川1 断面 (中 ~ 下層)



(1) 河川1遺物出土状況 (中層1)



(2) 河川1遺物出土状況 (中層2)



(3) 河川1遺物出土状況 (下層1)



(4) 河川1遺物出土状況 (下層2)



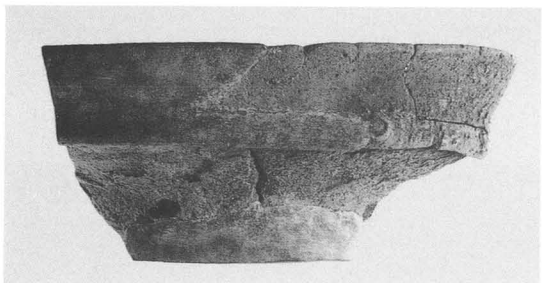
(5) 河川2 (南) 断面



(1) 9 (包含層)



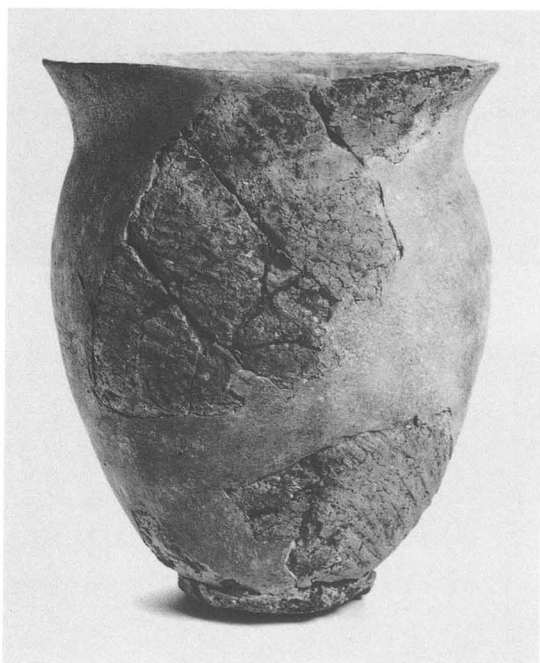
(2) 11 (土坑 1)



(3) 10 (土坑 1)



(4) 15 (土坑 1)



(5) 18 (土坑 1)



(6) 55 (土坑 3)



(7) 36 (河川 2 南区)



(8) 42 (河川 2 南区)

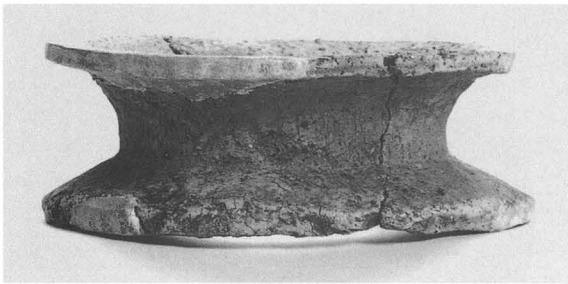




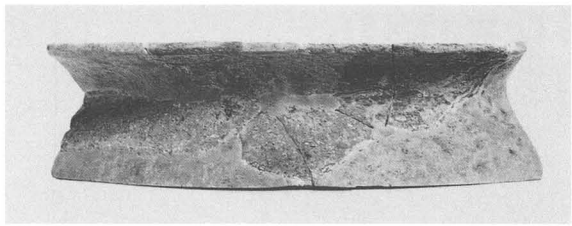
(1) E-1区43 (河川2中央区)



(5) E-2区1 (北部包含層)



(2) E-1区48 (河川2中央区)



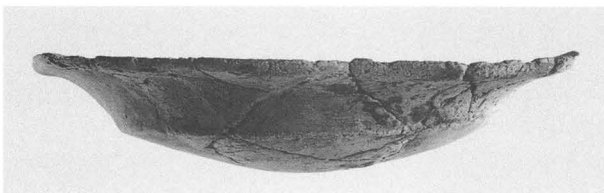
(6) E-2区24 (南部包含層)



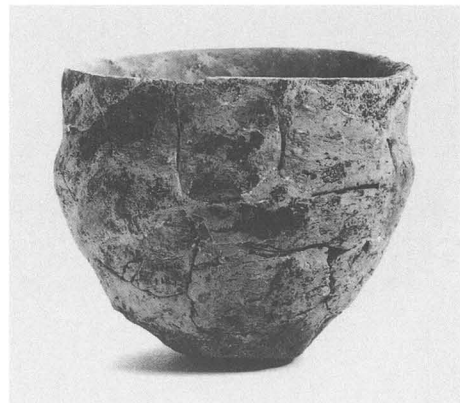
(3) E-1区54 (河川2中央区)



(7) E-2区26 (南部包含層下層)



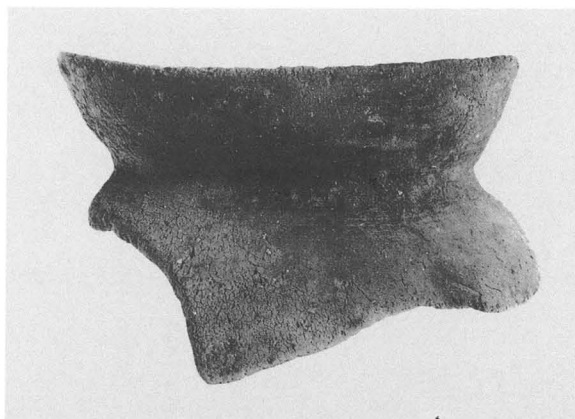
(4) E-1区50 (河川2中央区)



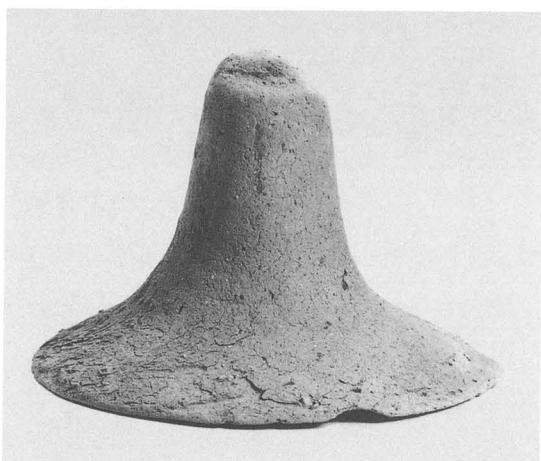
(8) E-2区31 (土坑3)



(1) 33 (土坑5)



(2) 34 (土坑5)



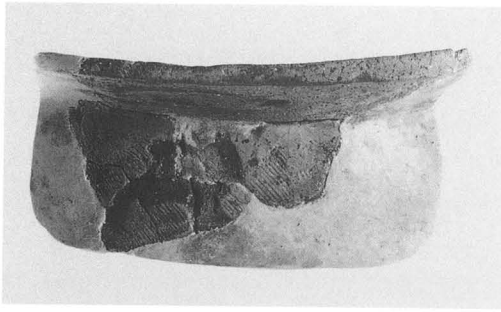
(3) 37 (土坑5)



(4) 36 (土坑5)



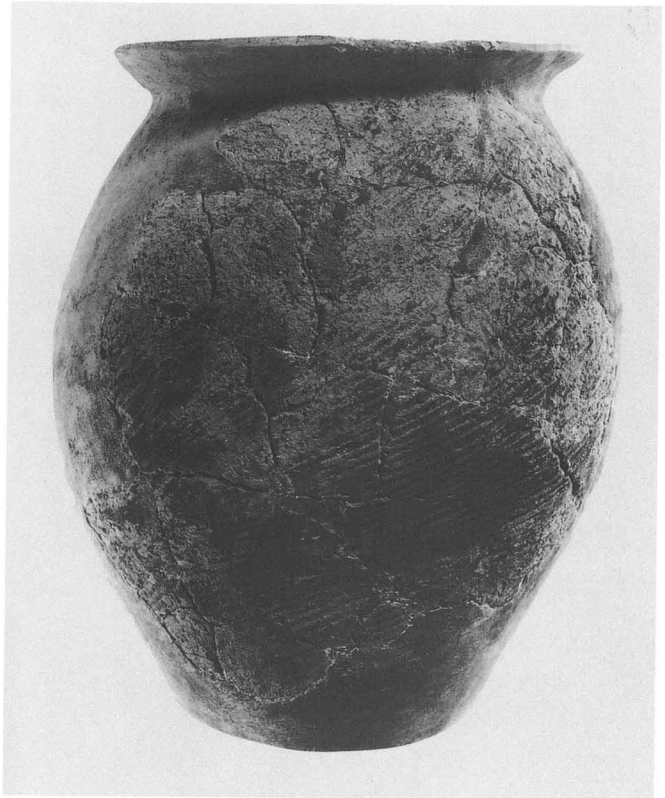
(5) 35 (土坑5)



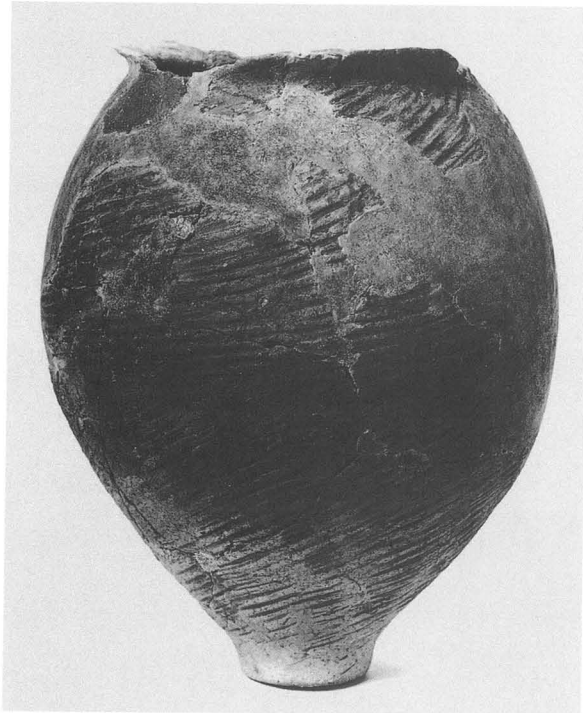
(1) 39 (土坑6)



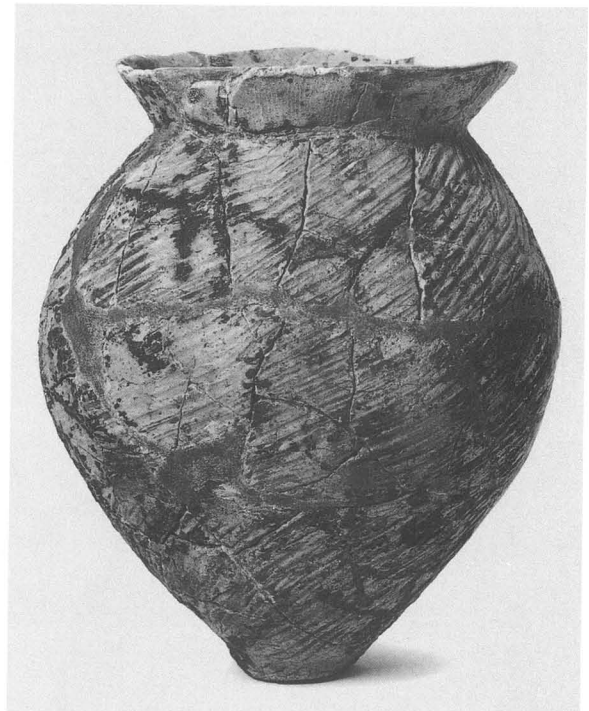
(2) 68 (河川1)



(3) 50 (河川1)

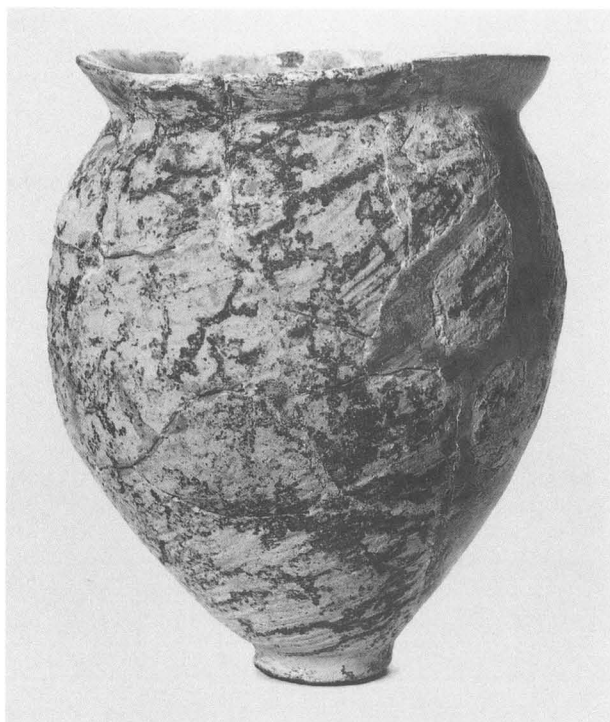


(4) 52 (河川1)



(5) 54 (河川1)





(1) 53 (河川1)



(2) 66 (河川1)



(3) 57 (河川1)



(4) 67 (河川1)



(5) 55 (河川1)



(6) 51 (河川1)



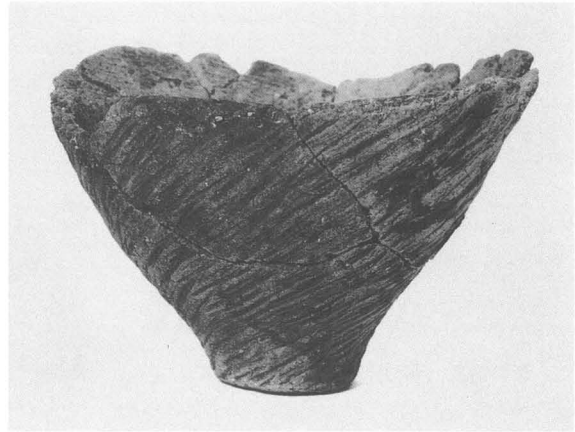
(1) 59 (河川1)



(2) 78 (河川1)



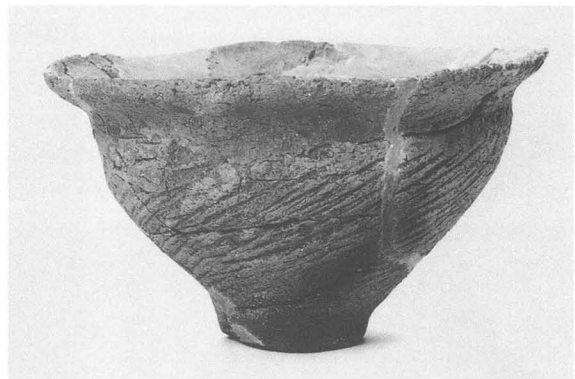
(3) 79 (河川1)



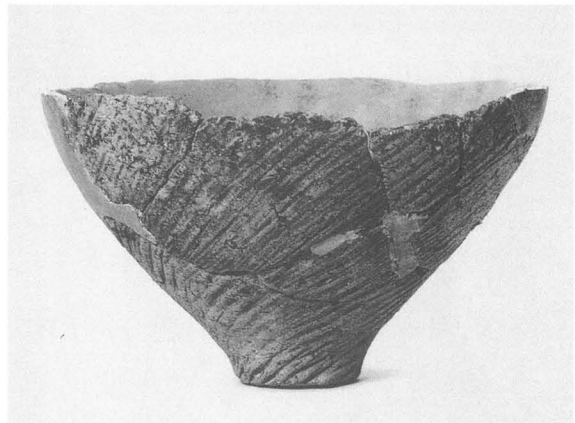
(4) 81 (河川1)



(5) 71 (河川1)



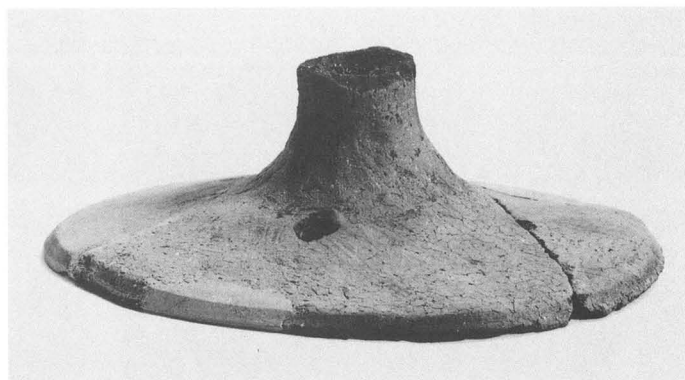
(6) 80 (河川1)



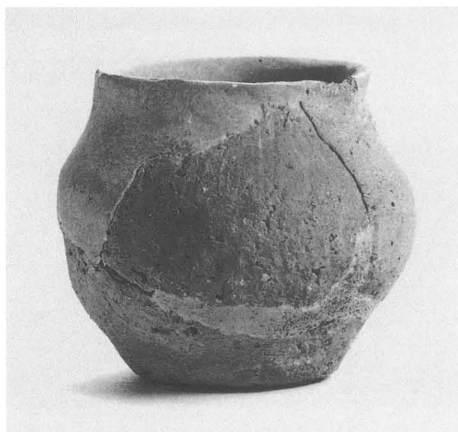
(7) 82 (河川1)



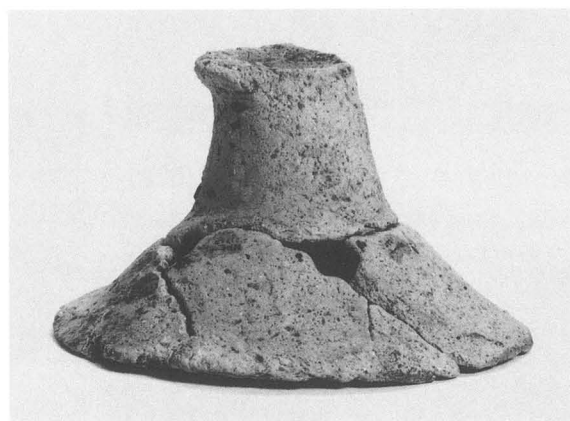
(1) 86 (河川1)



(5) 94 (河川1)



(2) 87 (河川1)



(6) 93 (河川1)



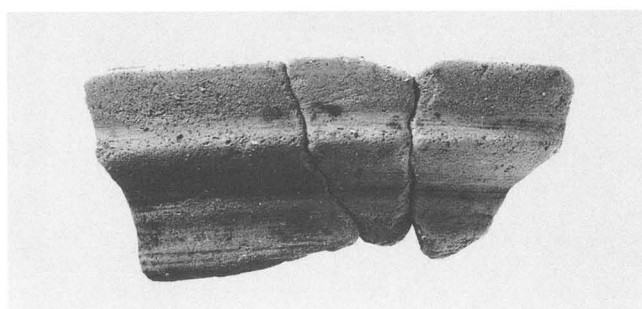
(3) 89 (河川1)



(7) 91 (河川1)

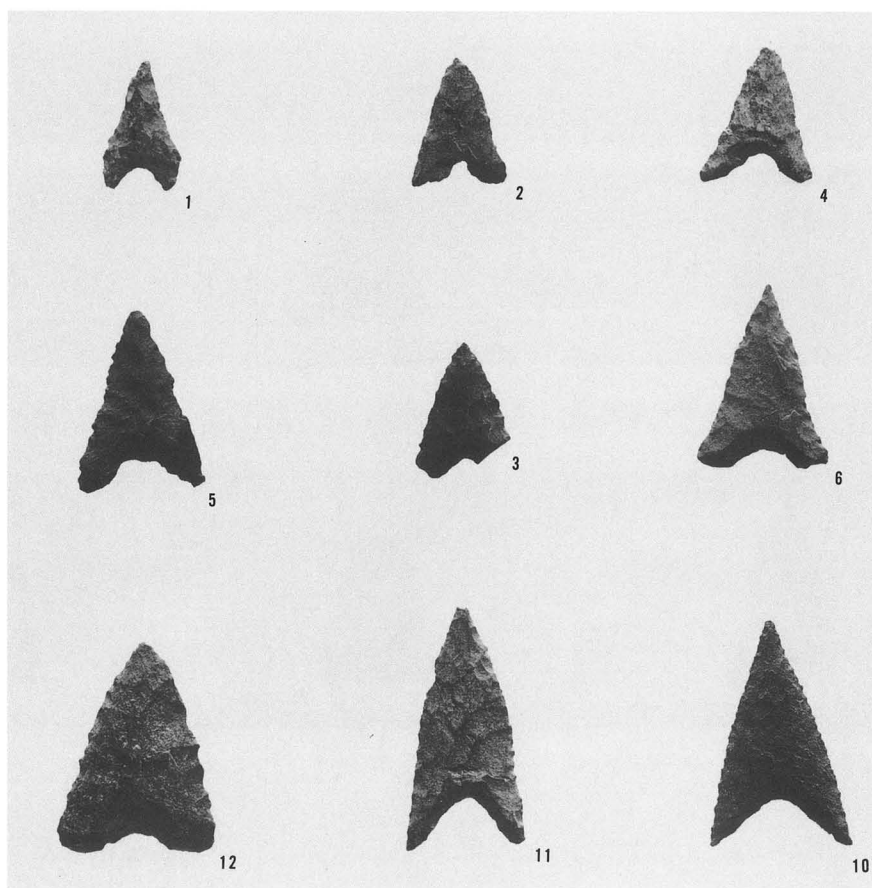
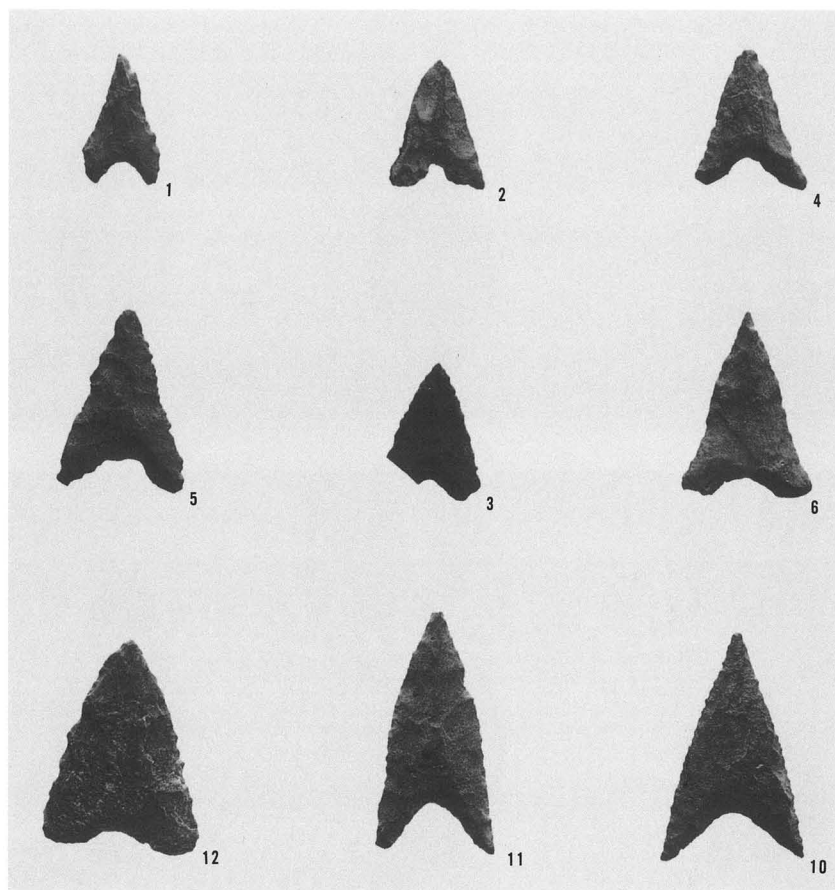


(4) 90 (河川1)

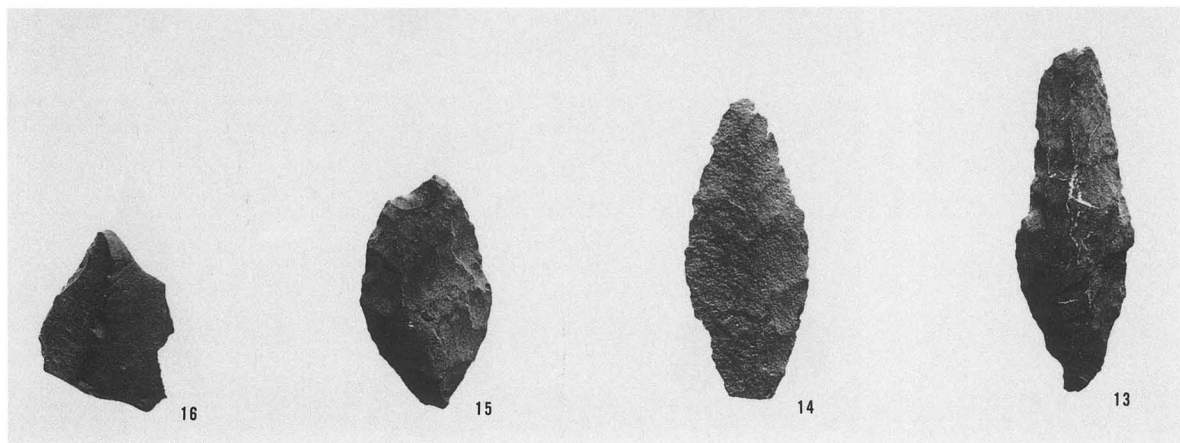
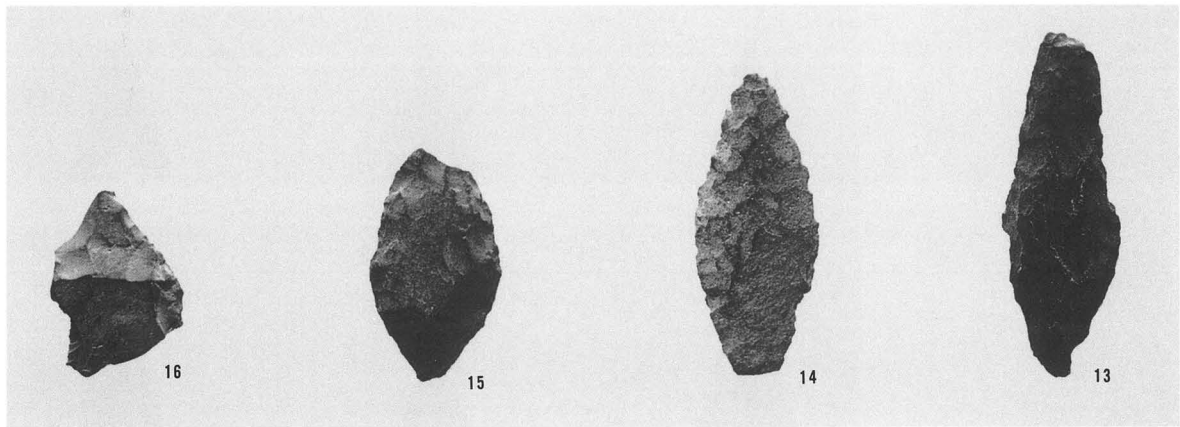


(8) 95 (河川2)

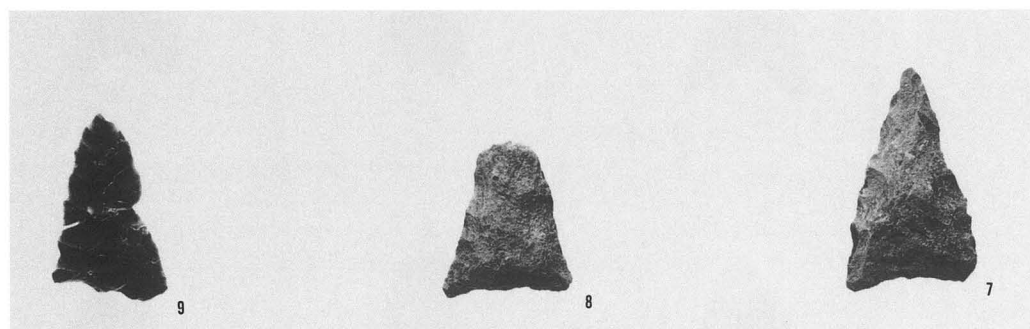
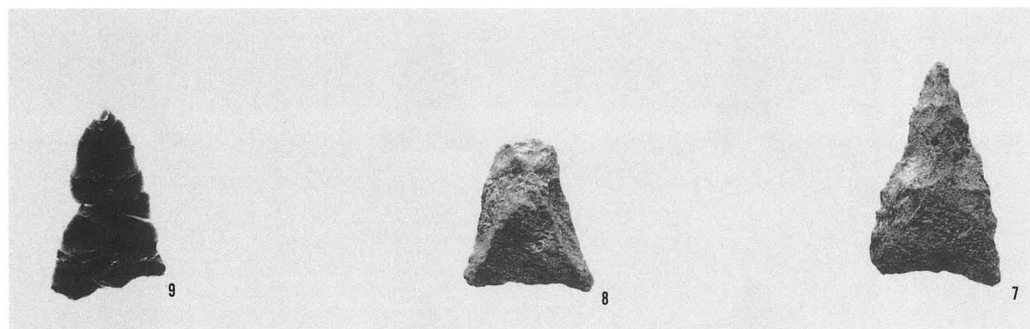




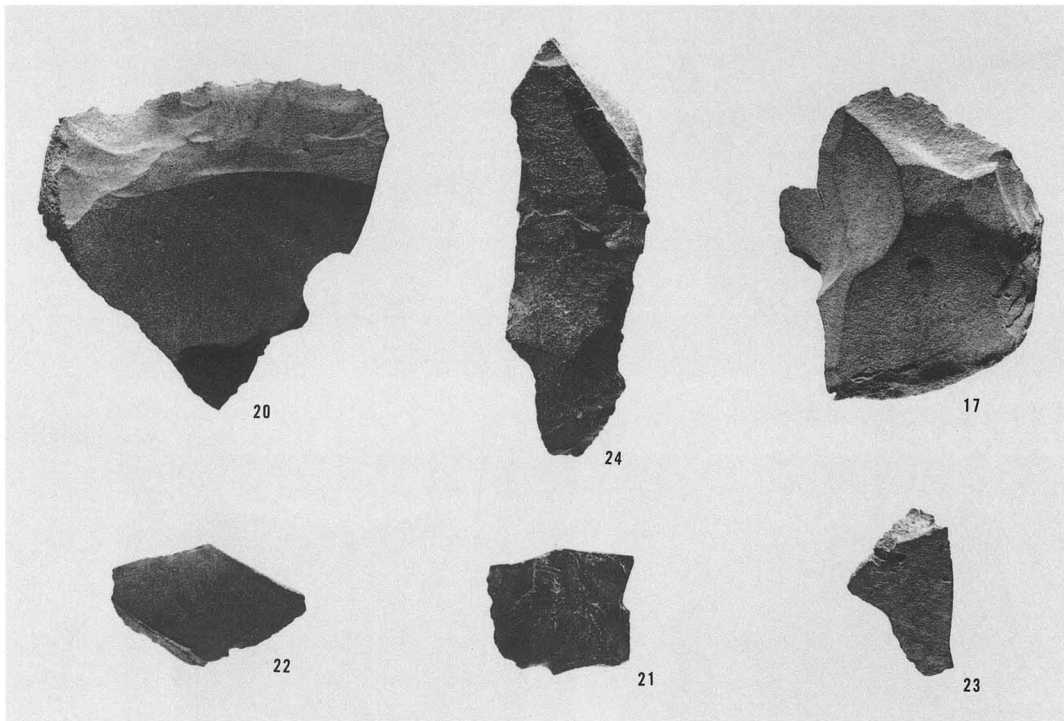
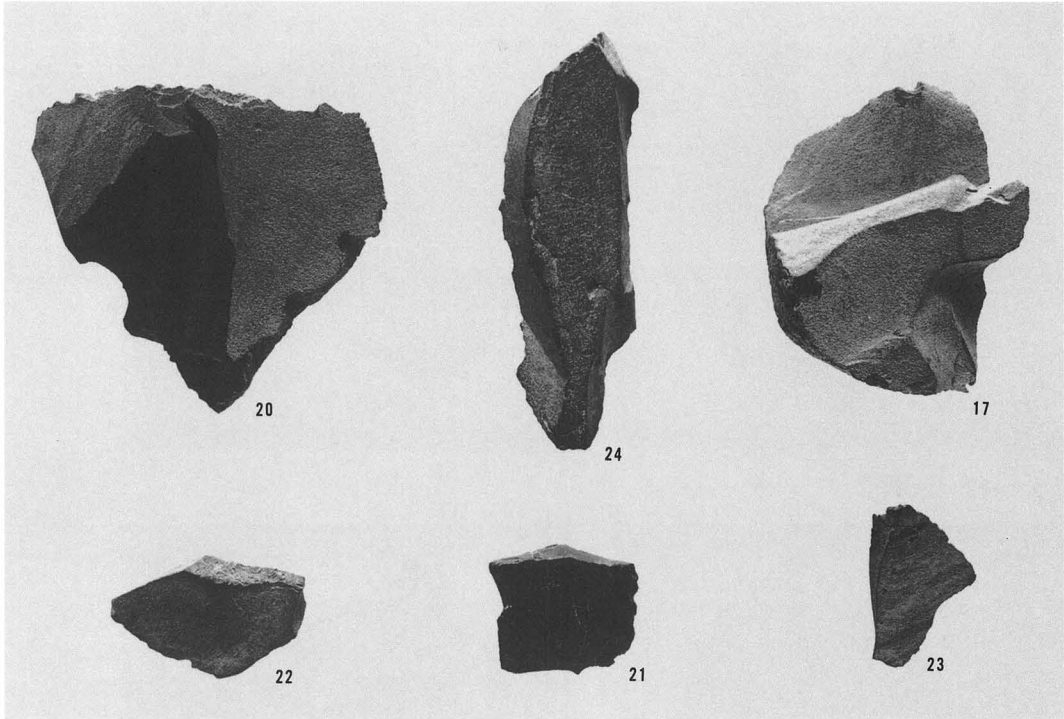
(1) 石鏃 1



(1) 石鏃 2

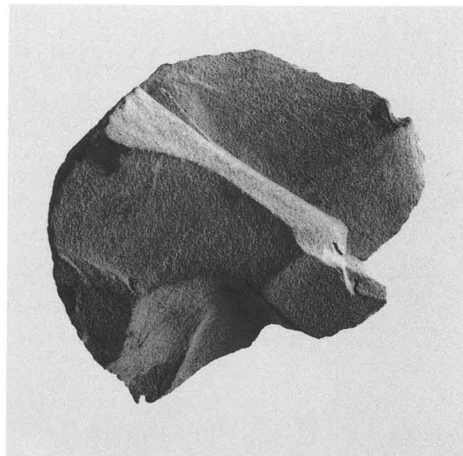
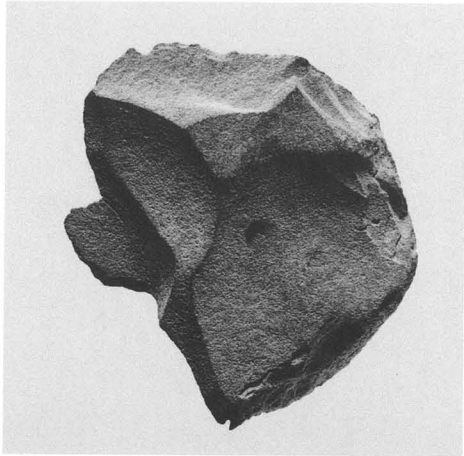


(2) 石鏃 3

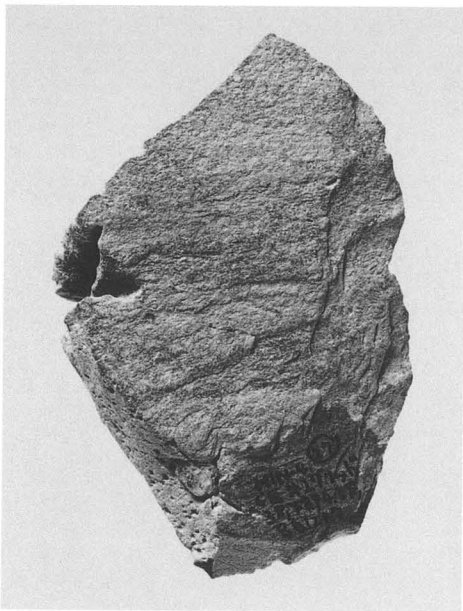


(1) 剥片・削片・石核

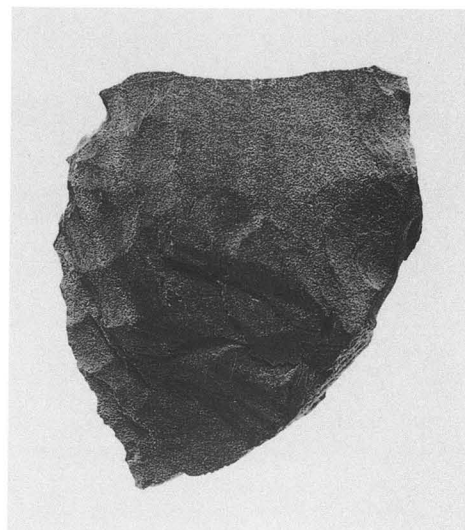
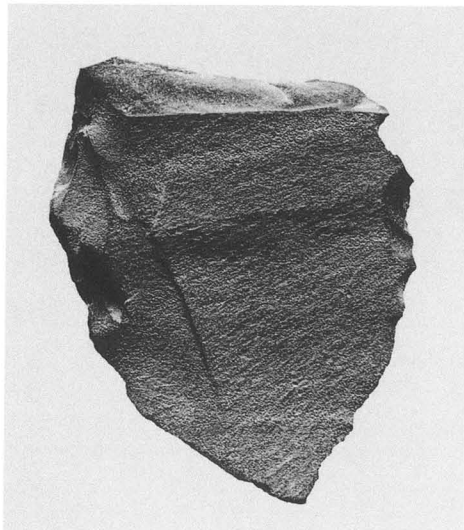




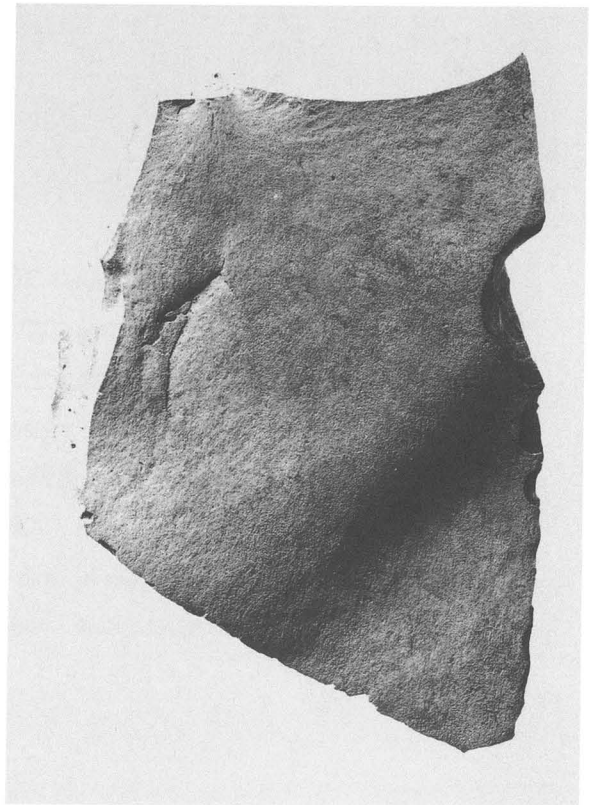
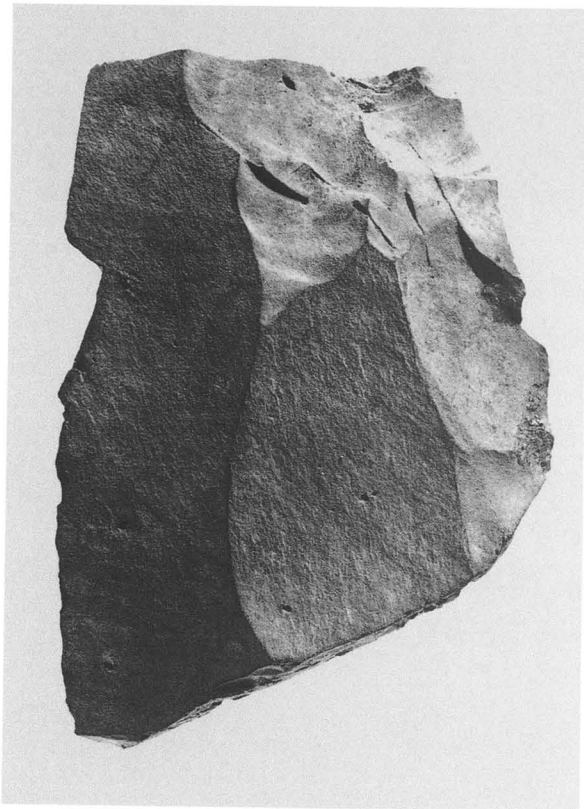
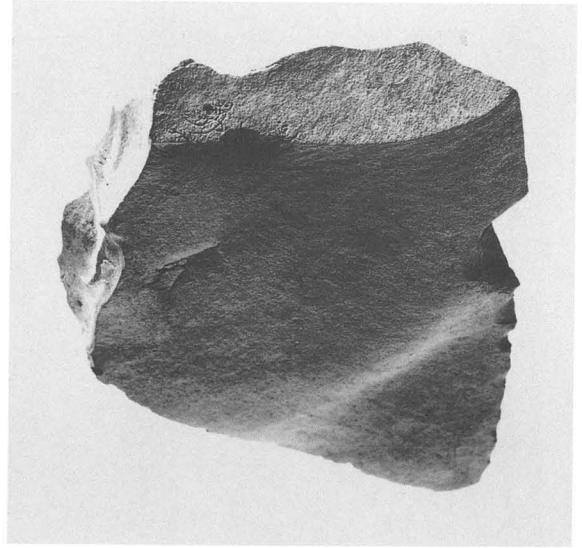
(1) 17 [石核]



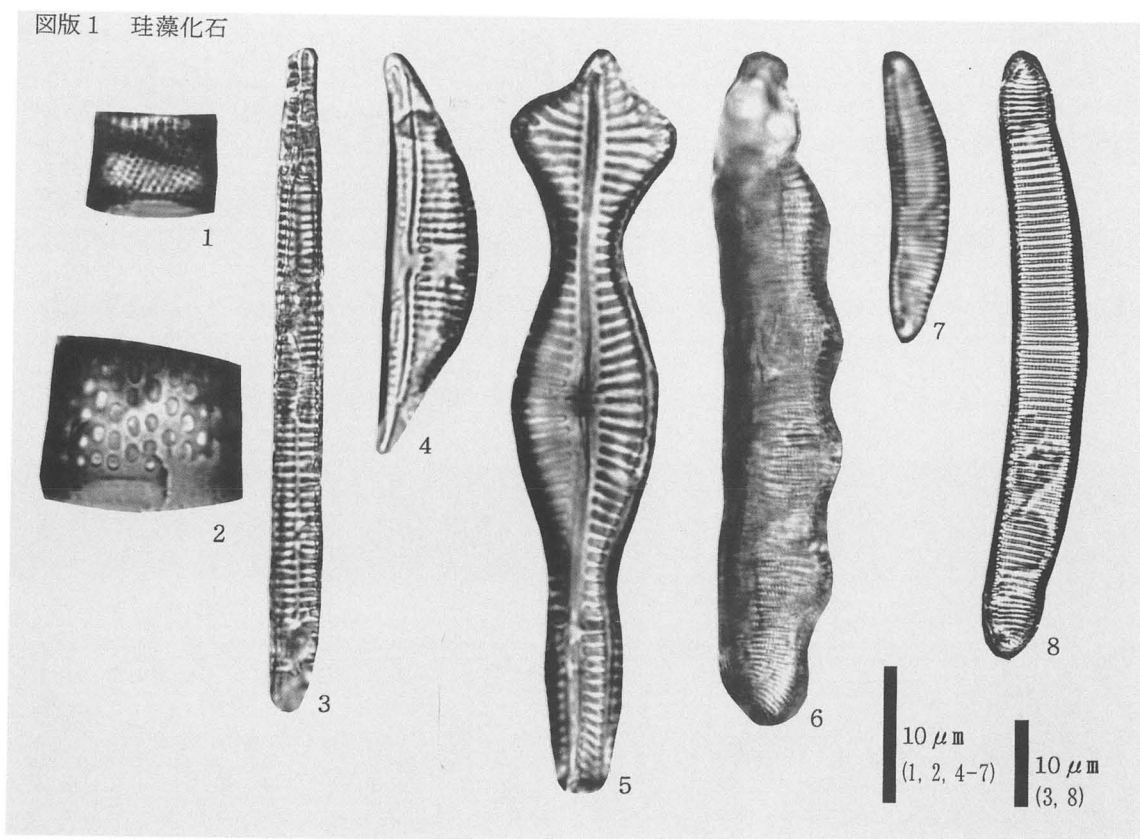
(2) 18 [スクレイパー]



(3) 19 [スクレイパー]



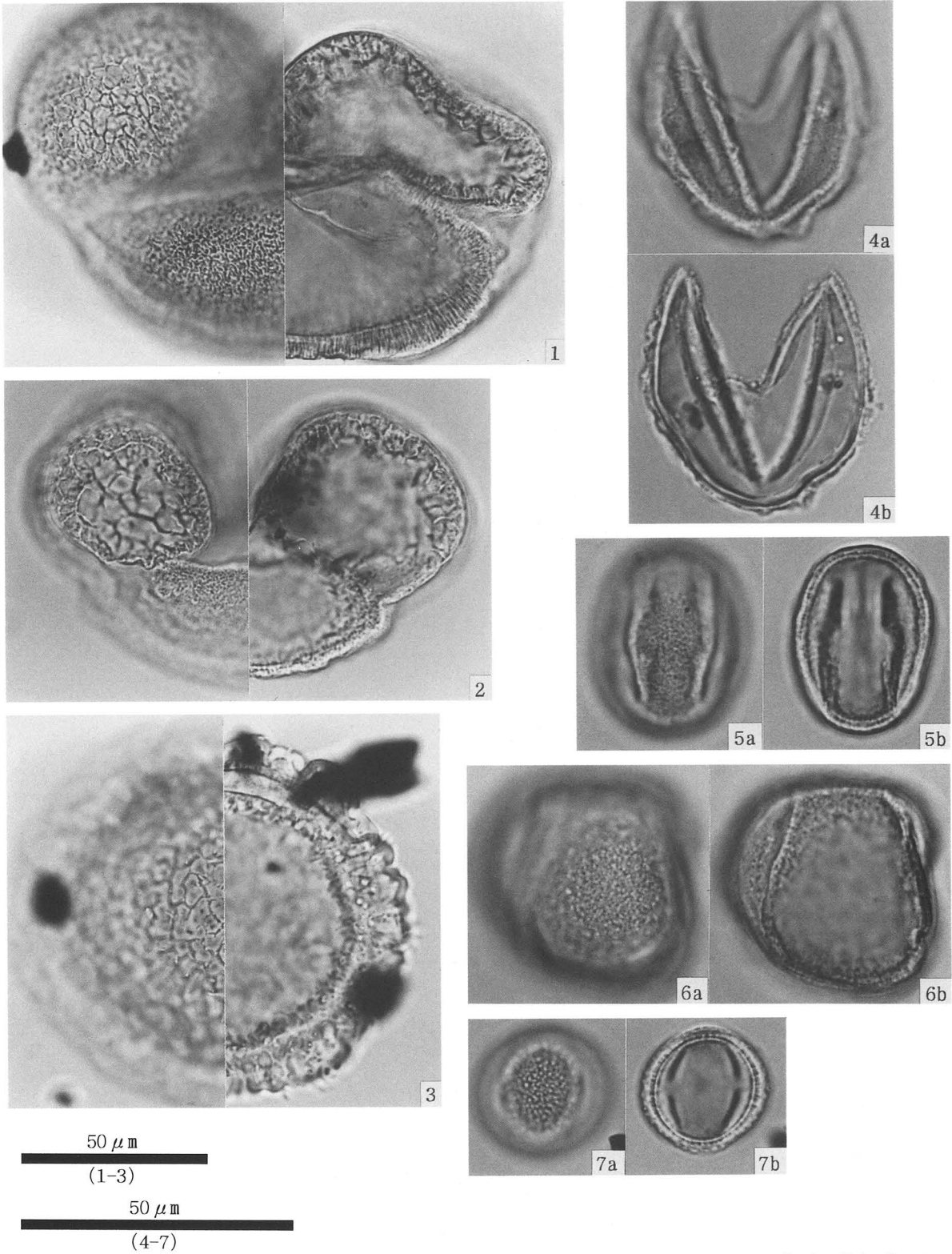
(1) 25 [盤状剥片]



(1) 珪藻化石

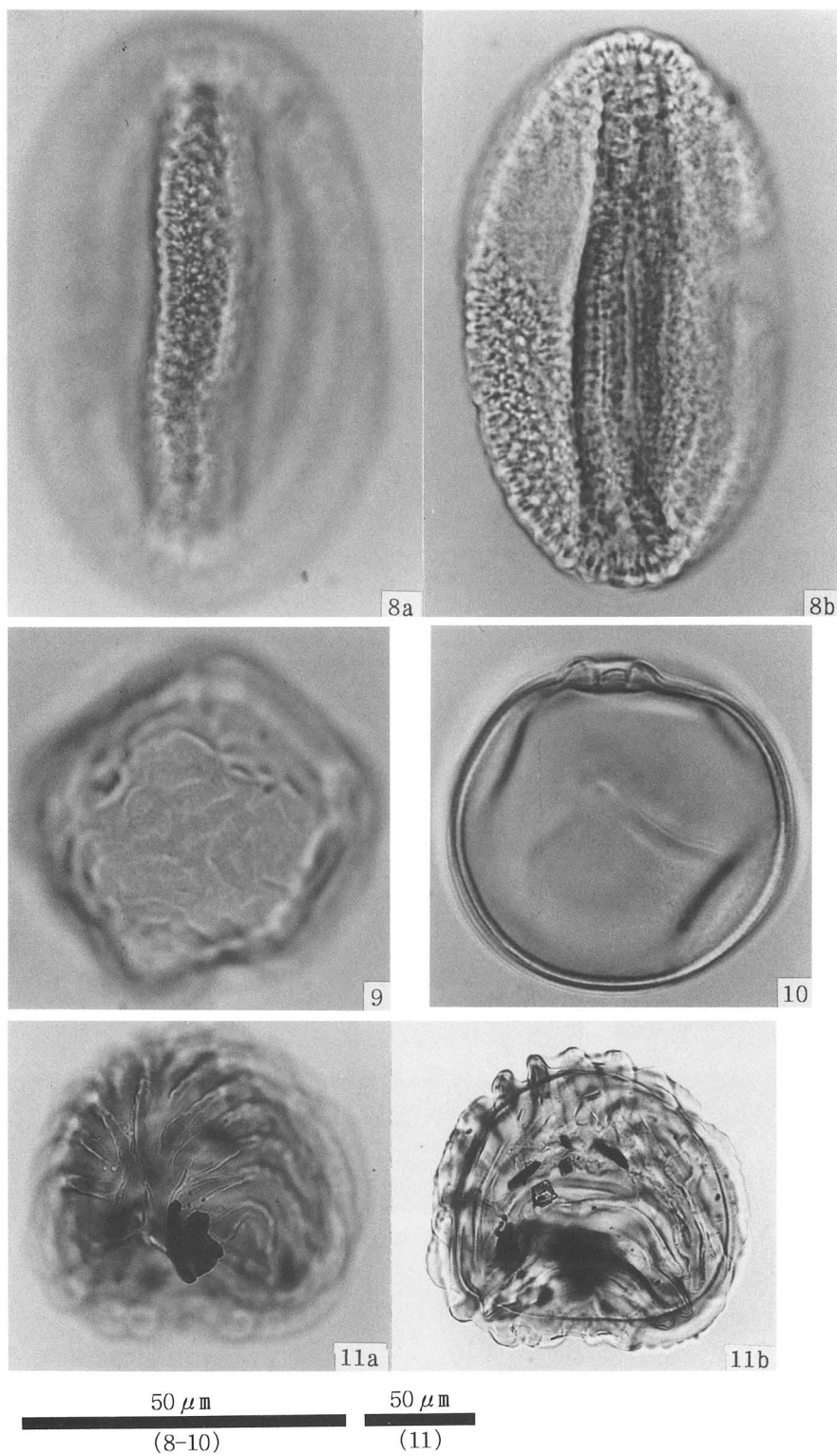
1. *Aulacoseira ambigua* (Grun.) Simonsen (試料番号 2)
2. *Aulacoseira granulata* (Ehr.) Simonsen (試料番号 2)
3. *Synedra ulna* (Kuetz.) Ehrenberg (試料番号 2)
4. *Amphora ovalis* var. *affinis* (Kuetz) V.Heurck (試料番号 2)
5. *Gomphonema acuminatum* Ehrenberg (試料番号 2)
6. *Eunomia monodon* var. *tropica* Hustedt (試料番号 3)
7. *Eunomia pectinalis* var. *minor*. (Kuetz) Rabenhorst (試料番号 2)
8. *Eunomia pectinalis* var. *undulata* (Raifs) Rabenhorst (試料番号 3)





(1) 花粉化石 1

- |                 |                        |
|-----------------|------------------------|
| 1. モミ属 (試料番号 9) | 5. コナラ属アカガシ亜属 (試料番号 1) |
| 2. マツ属 (試料番号 1) | 6. コナラ属コナラ亜属 (試料番号 1)  |
| 3. ツガ属 (試料番号 1) | 7. ヨモギ属 (試料番号 1)       |
| 4. スギ属 (試料番号 1) |                        |



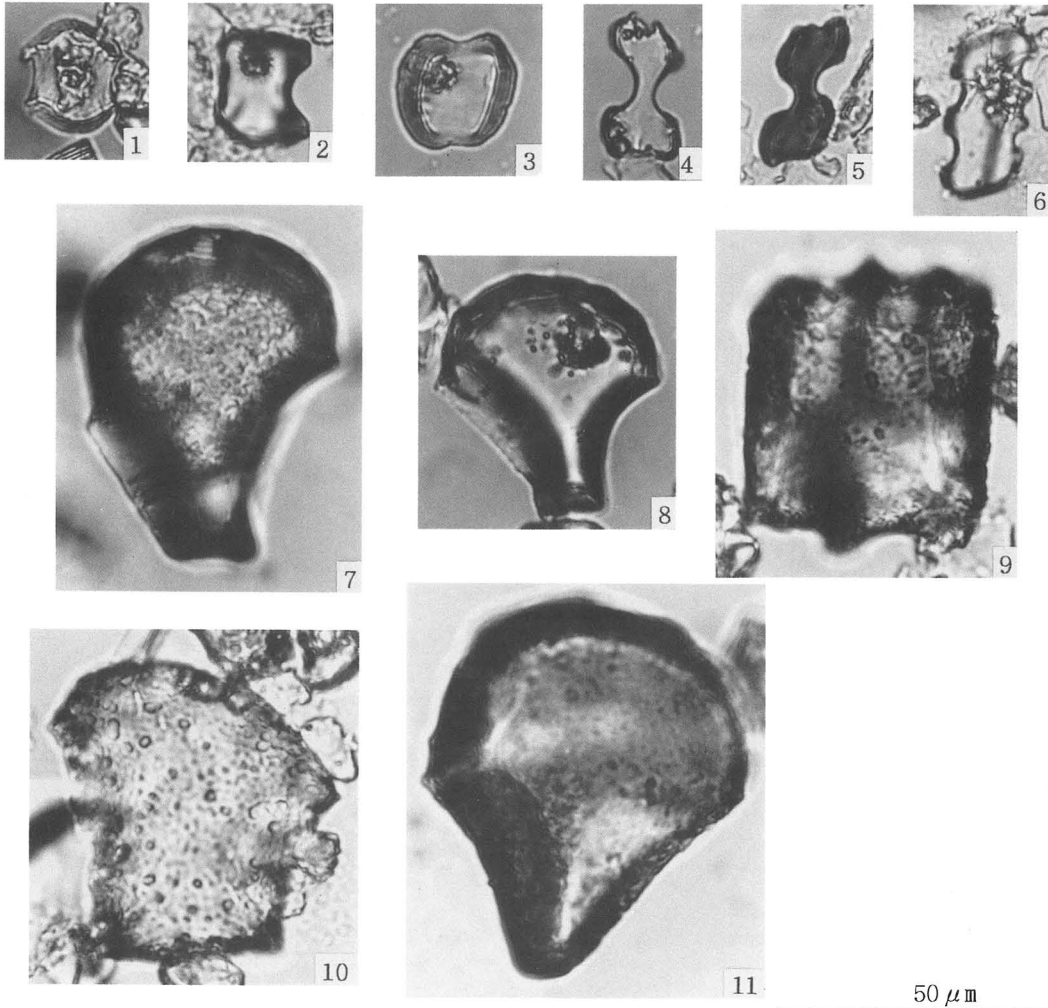
(1) 花粉化石 2

8. ソバ属 (試料番号11)

10. イネ科 (試料番号1)

9. ニレ属-ケヤキ属 (試料番号1)

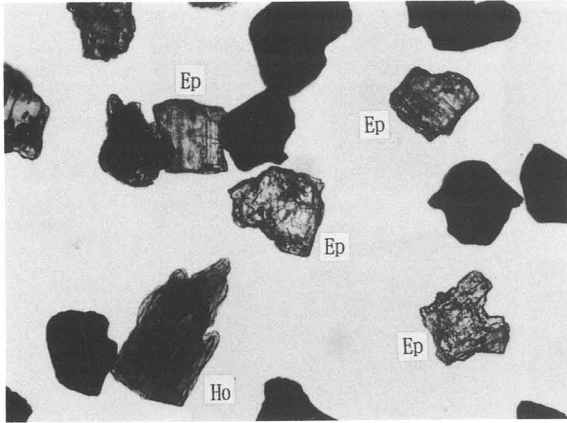
11. ミズワラビ属 (試料番号9)



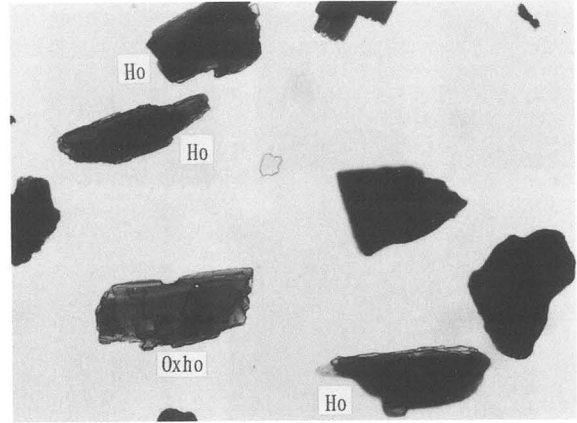
(1) 植物珪酸体

- |                         |                            |
|-------------------------|----------------------------|
| 1. チゴザサ属短細胞珪酸体 (試料番号 2) | 2. ネザサ節短細胞珪酸体 (試料番号15)     |
| 3. ヨシ属短細胞珪酸体 (試料番号 2)   | 4. ススキ属短細胞珪酸体 (試料番号 2)     |
| 5. ススキ属短細胞珪酸体 (試料番号15)  | 6. イチゴツナギ亜科短細胞珪酸体 (試料番号18) |
| 7. イネ属機動細胞珪酸体 (試料番号 2)  | 8. イネ属機動細胞珪酸体 (試料番号 9)     |
| 9. ネザサ節機動細胞珪酸体 (試料番号15) | 10. クマザサ属機動細胞珪酸体 (試料番号18)  |
| 11. ヨシ属機動細胞珪酸体 (試料番号 4) |                            |

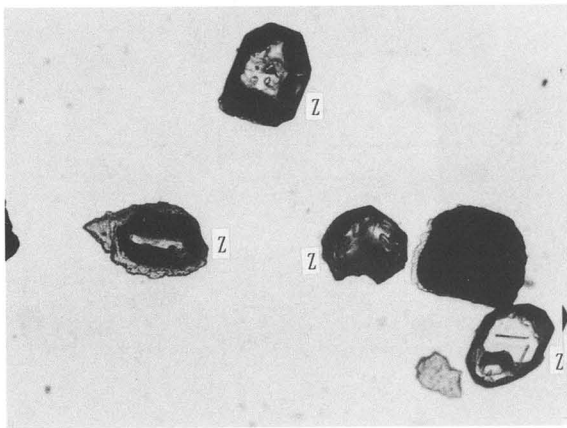




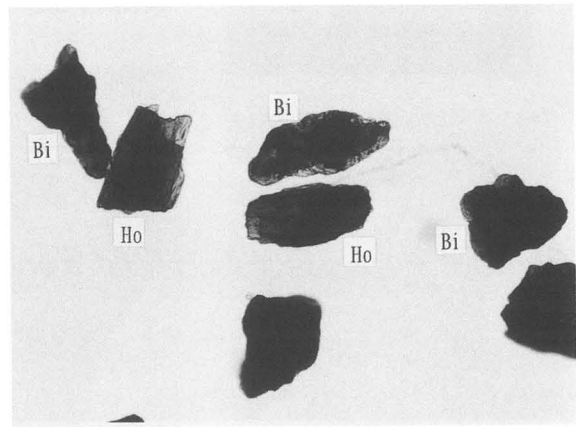
(1) D-6-91 (b類)



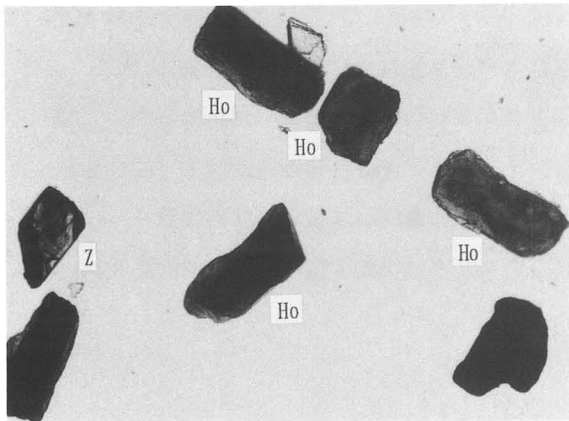
(2) D-6-26 (a類)



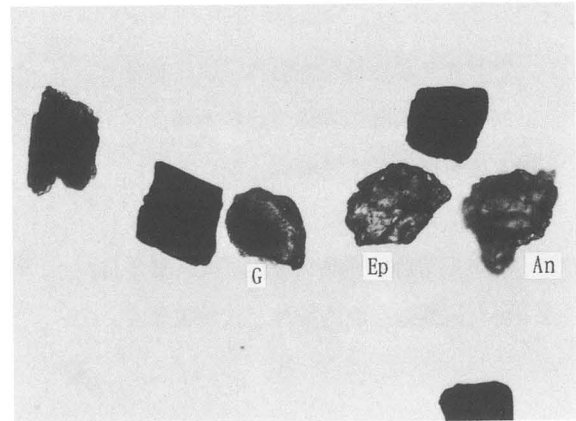
(3) A-2-31 (e類)



(4) D-5-17 (f類)



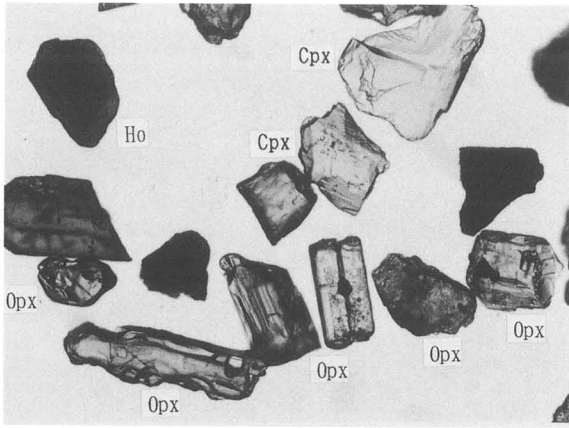
(5) D-6-81 (a類)



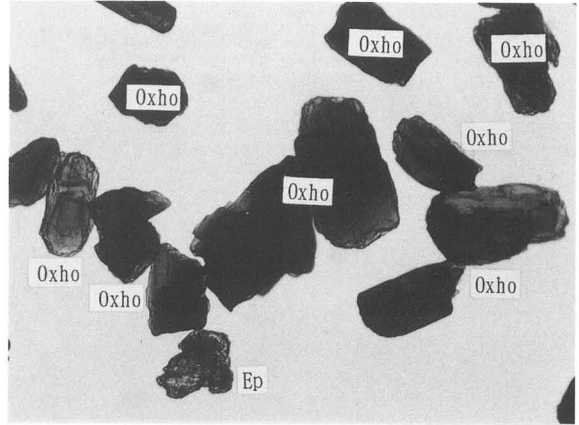
(6) D-6-98 (b類)

0.5mm

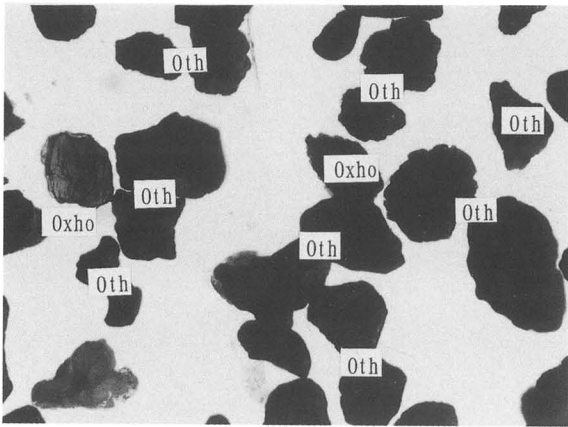
Ho: 角閃石    Oxho: 酸化角閃石    Bi: 黒雲母    Z: ジルコン    G: ザクロ石  
Ep: 緑レン石    An: 紅柱石



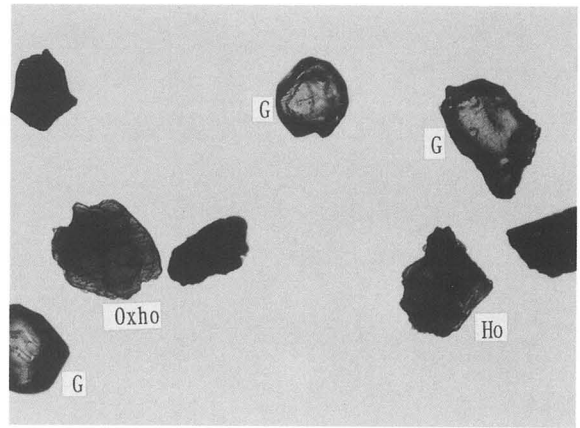
(1) D-7-37 (h類)



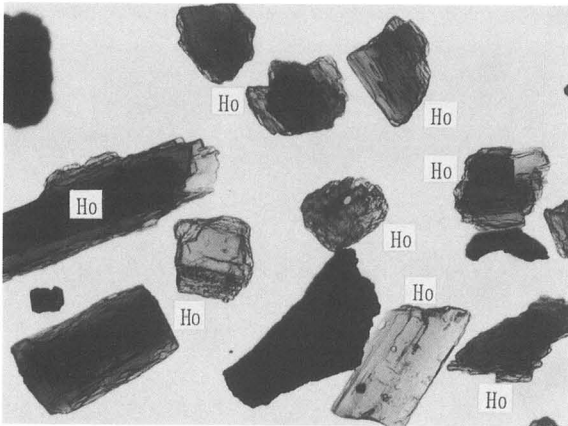
(2) D-7-77 (c類)



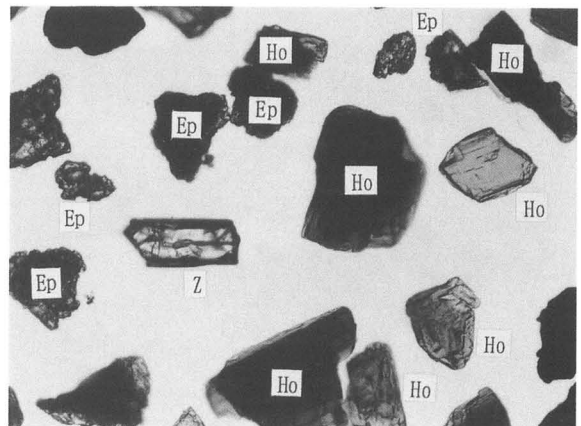
(3) A-2-a (g類)



(4) A-2-c (d類)



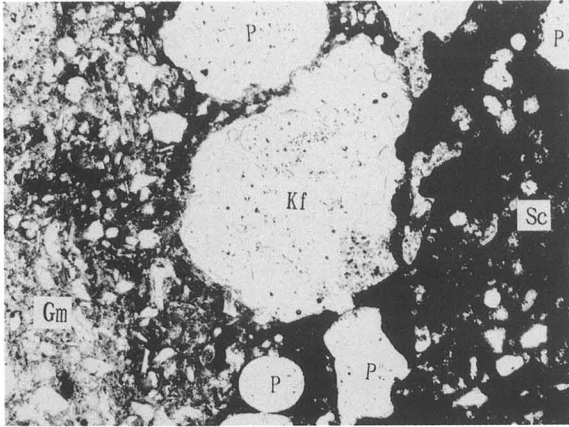
(5) 地山 2



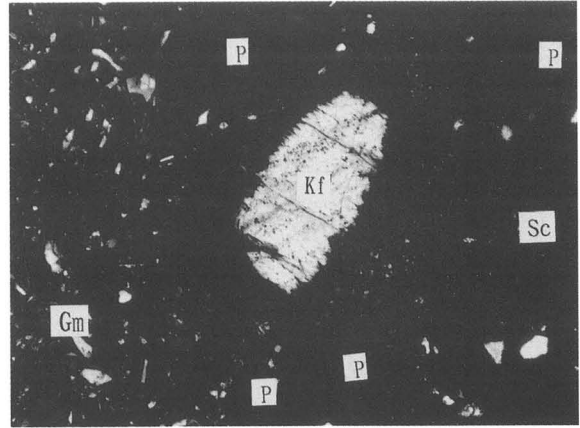
(6) 地山 5

0.5mm

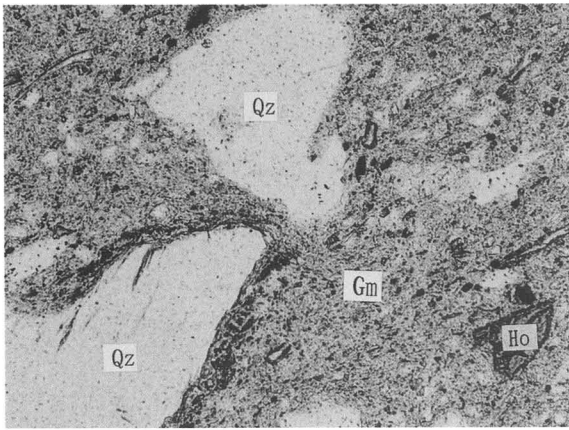
Opx: 斜方輝石 Cpx: 単斜輝石 Ho: 角閃石 Oxho: 酸化角閃石 Z: ジルコン  
G: ザクロ石 Ep: 緑レン石 Oth: その他



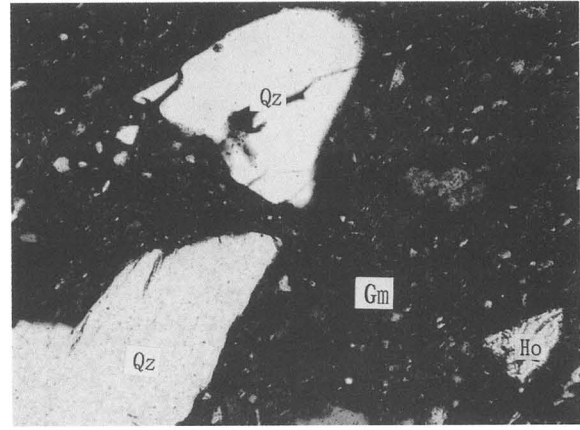
(1) A-3-2◎ 下方ポーラー



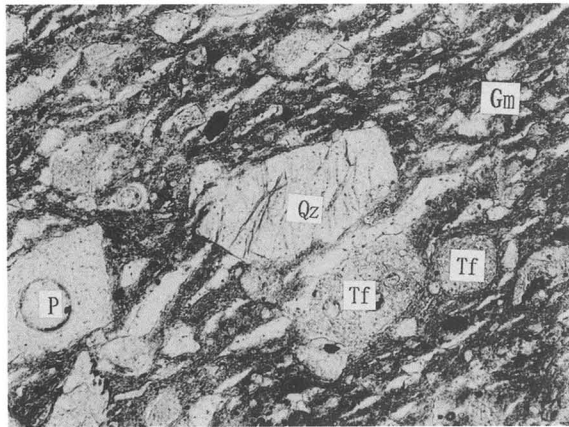
(2) A-3-2◎ 直交ポーラー



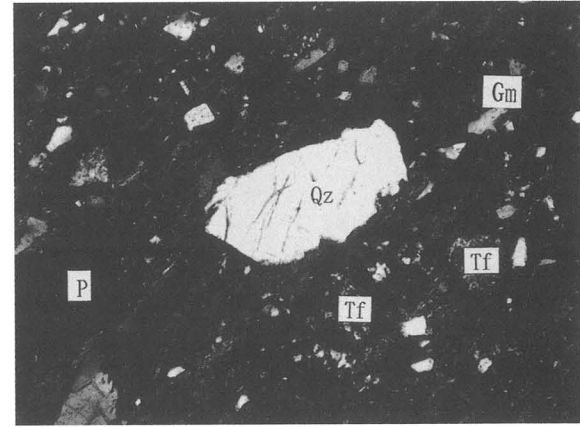
(3) B-7-5◎ 下方ポーラー



(4) B-7-5◎ 直交ポーラー



(5) A-2-6◎ 下方ポーラー



(6) A-2-6◎ 直交ポーラー

0.2mm

Qz:石英 Kf:カリ長石 Ho:角閃石 Tf:凝灰岩 Gm:基質  
P:孔隙 Sc:スコリア