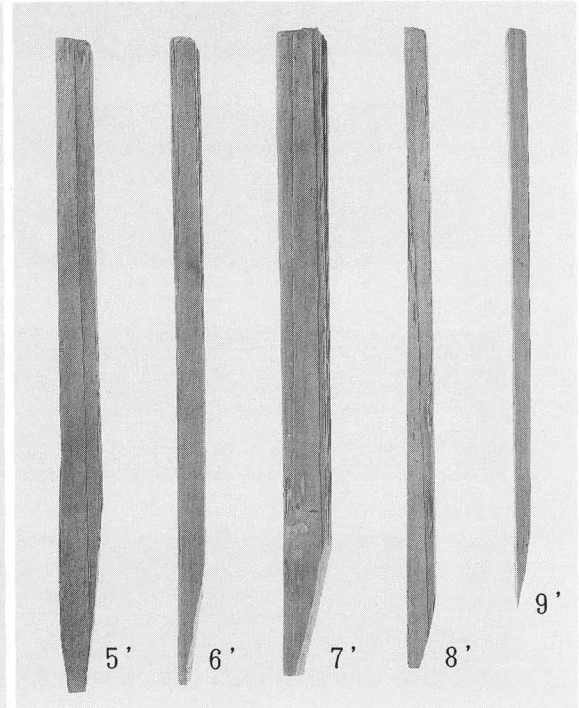
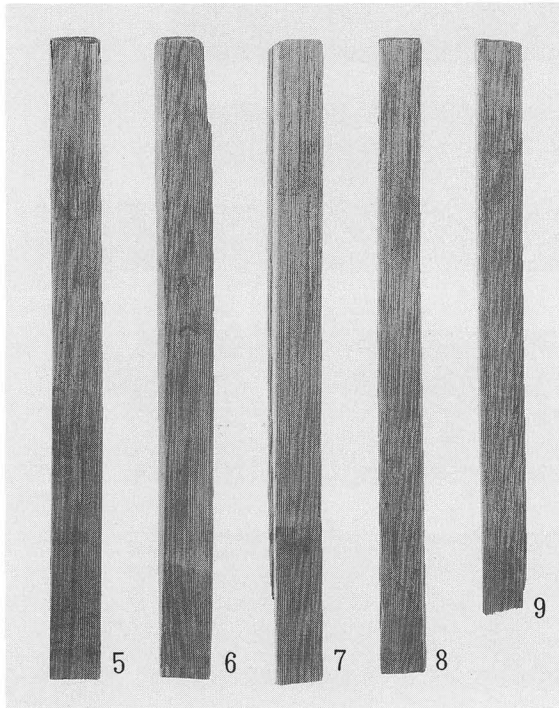
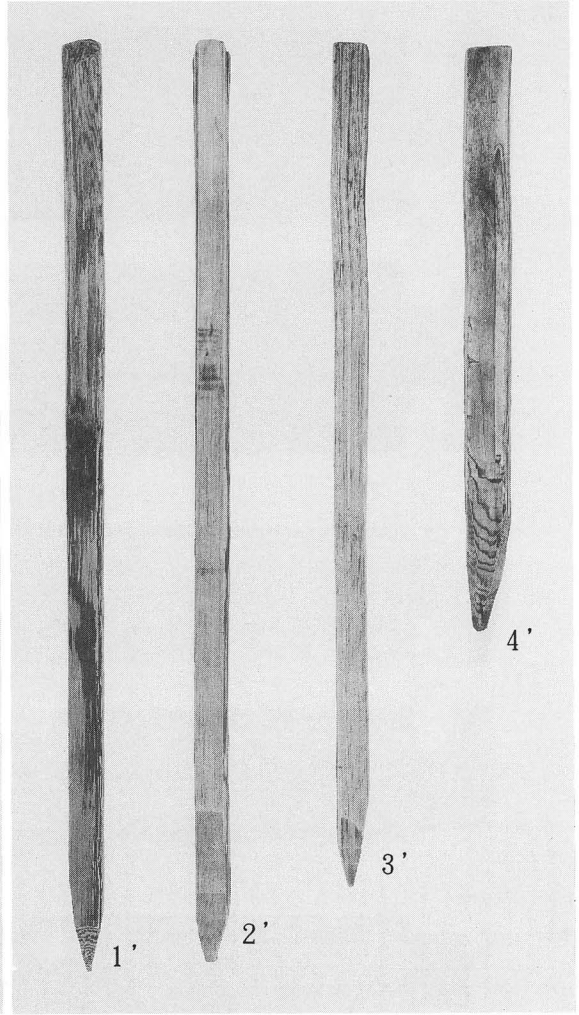
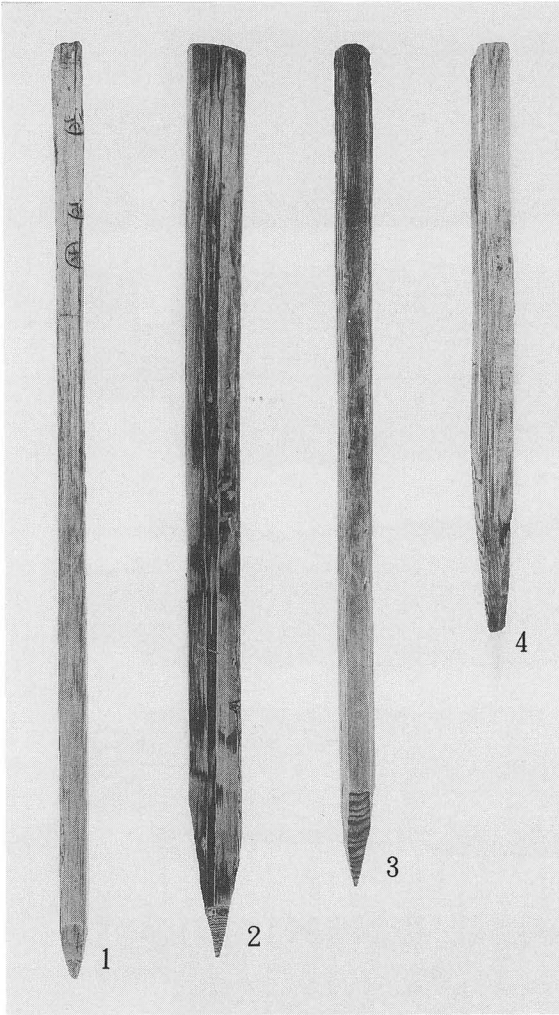
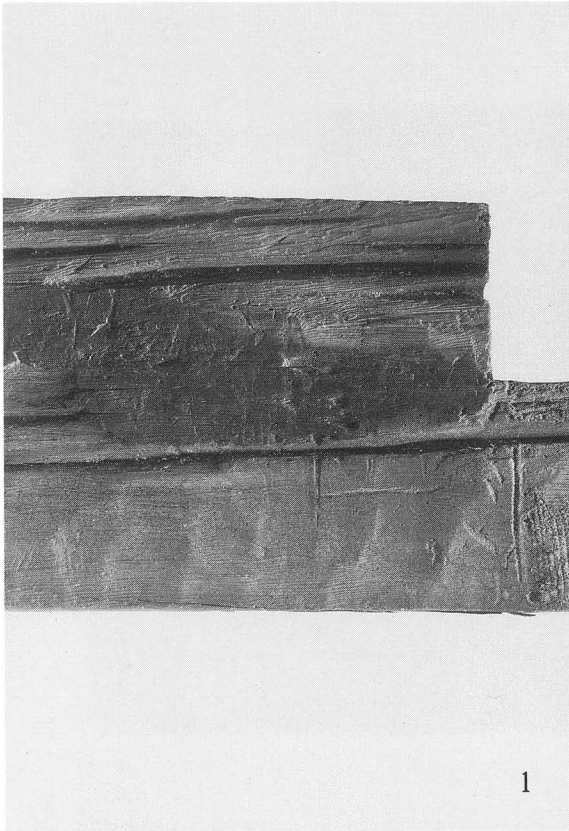


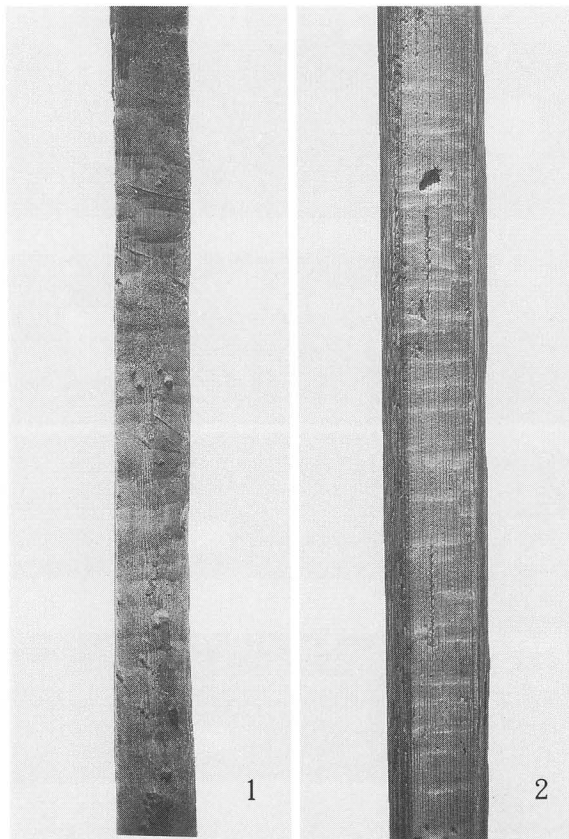
井戸枋材4段 (1 : A面4段, 2 : B面4段, 3 : C面4段, 4 : D面4段)



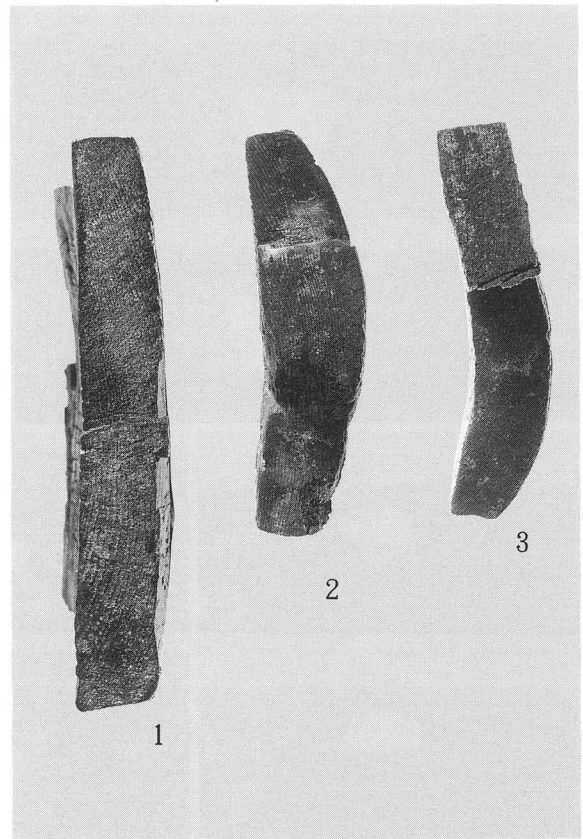
杭, 小杭 (1: 杭1, 2: 杭4, 3: 杭3, 4: 杭2  
 5: A面小杭, 6: B面小杭, 7: C面小杭1, 8: C面小杭2, 9: C面小杭3)



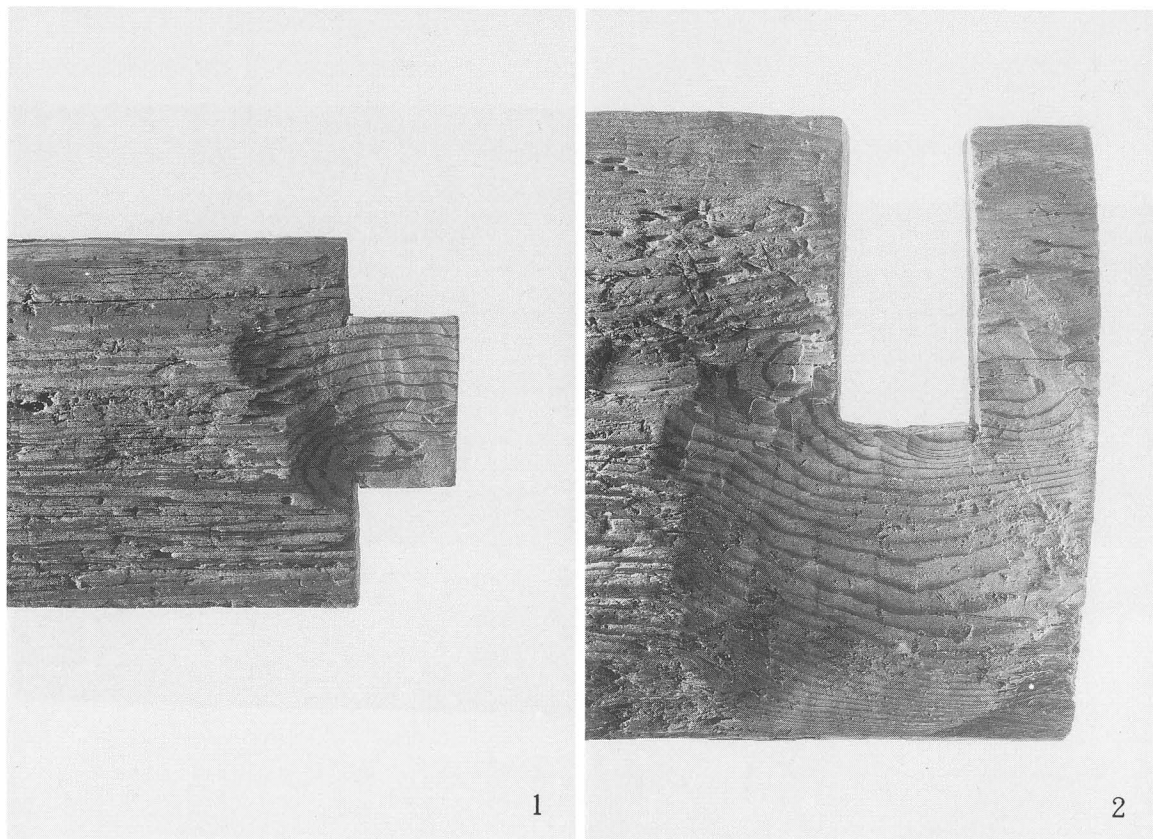
a. 炭化部分と加工痕 (1 : A面2段内面, 2 : C面1段内面)



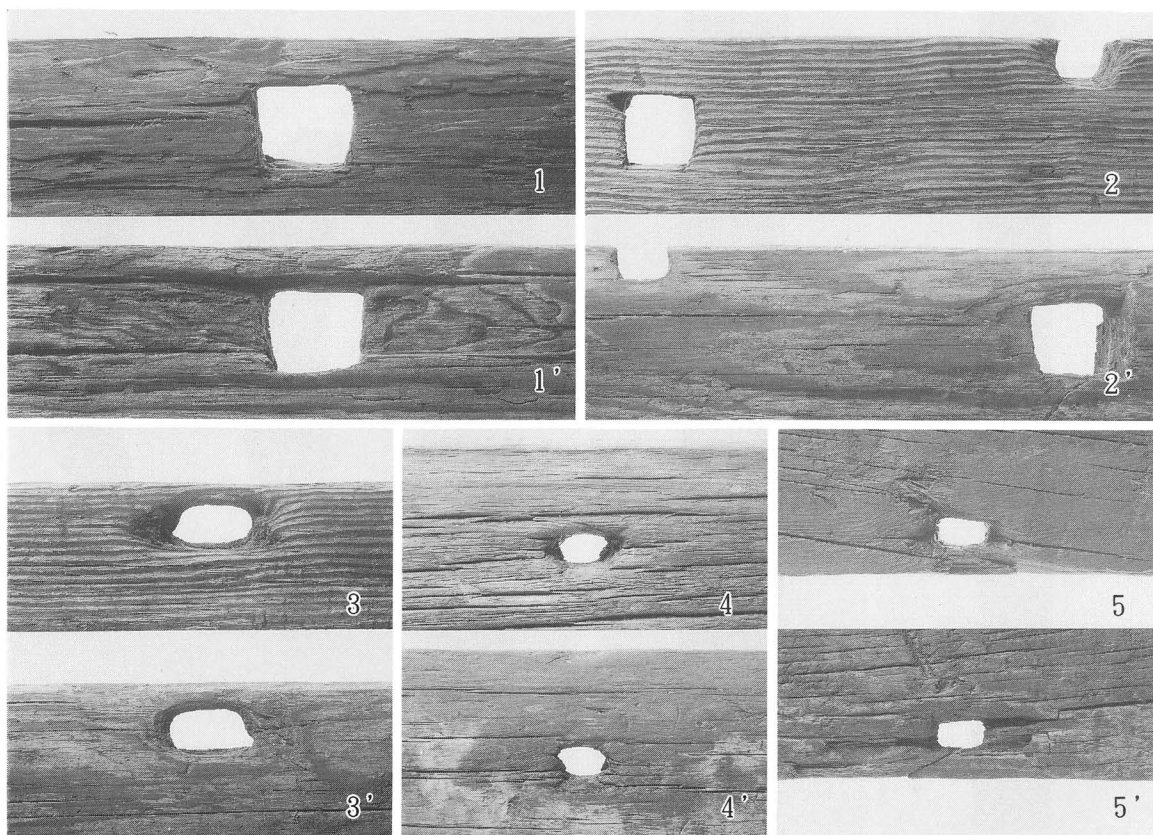
b. 加工痕 (1 : C面2段上端面, 2 : C面2段下端面)



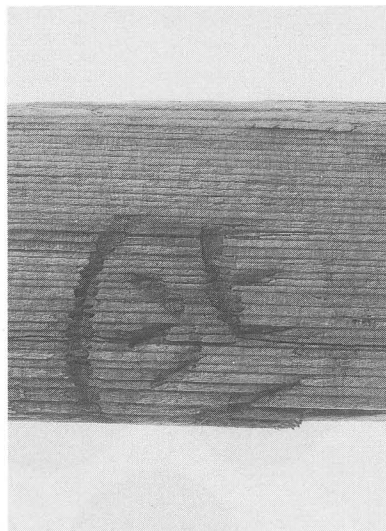
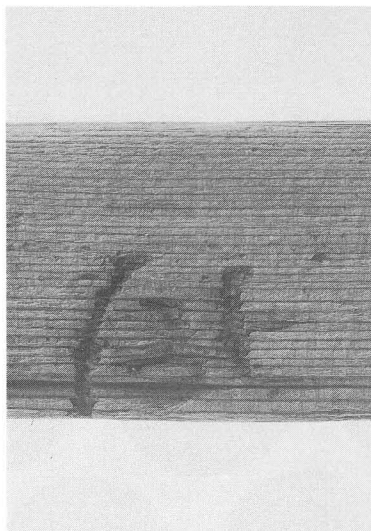
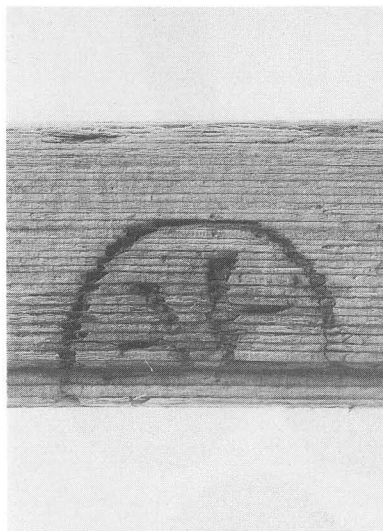
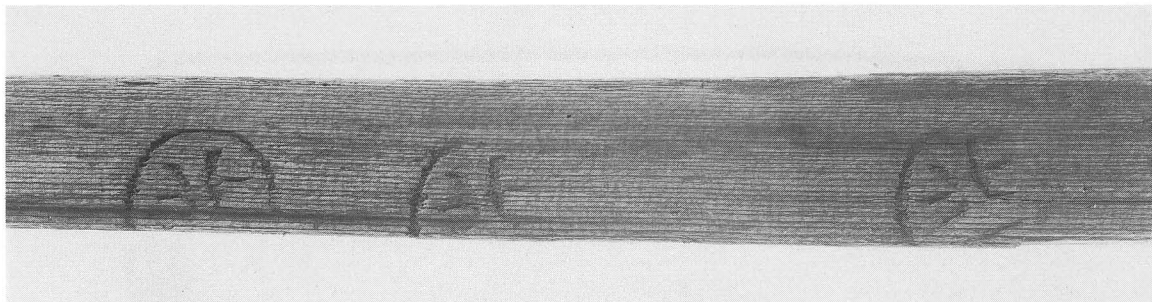
c. 小口 (1 : C面1段, 2 : B面3段, 3 : C面4段)



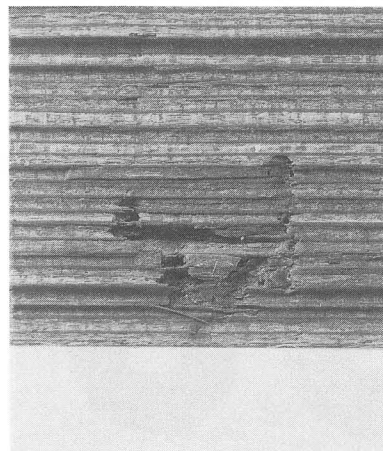
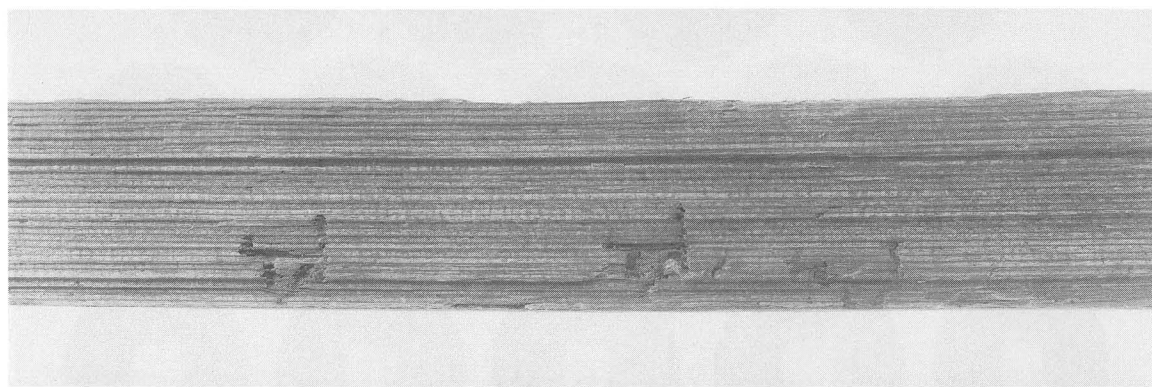
a. 仕口加工 (1 : B面3段左外面, 2 : C面1段左外面)



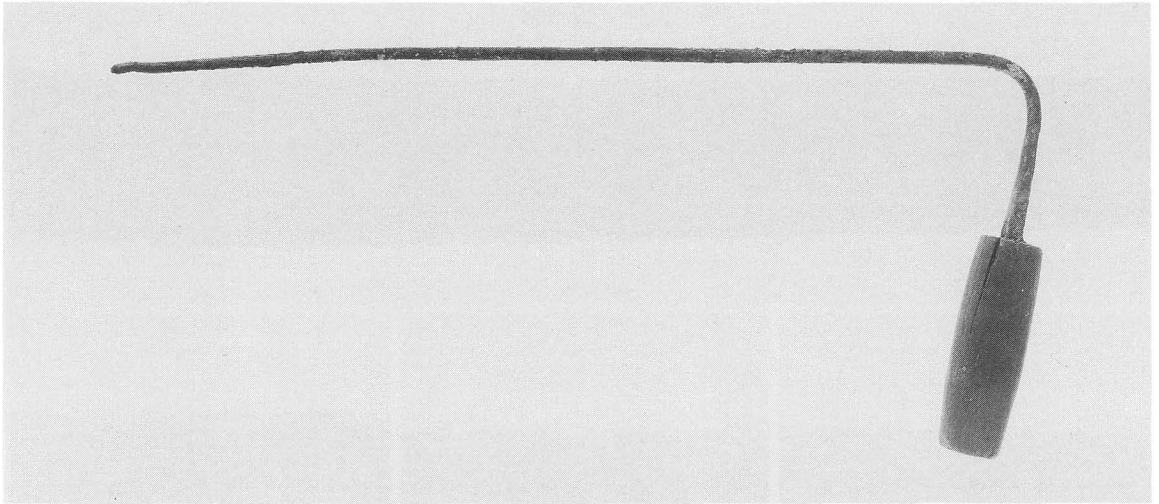
b. 柄穴 (1 : C面4段, 2 : C面3段, 3 : B面3段, 4 : A面3段, 5 : B面集水枠)



a. 刻印 杭1

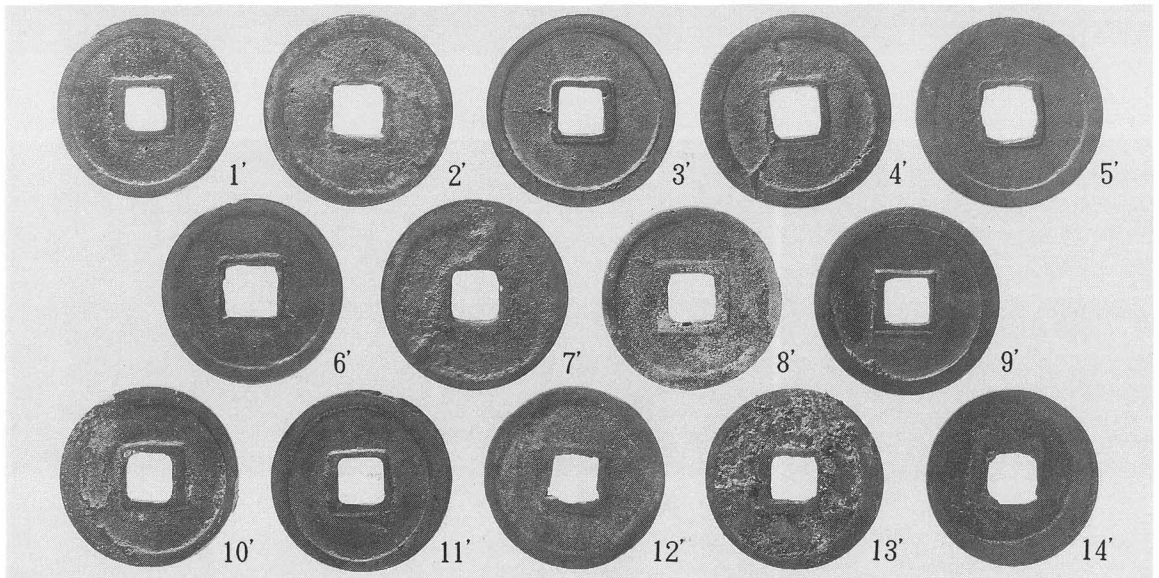
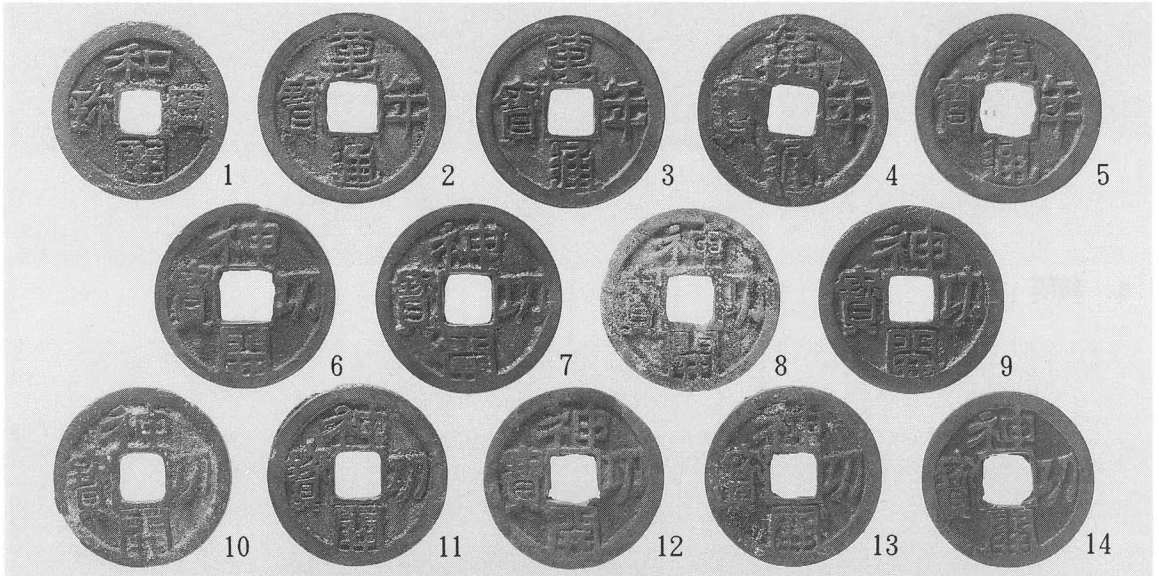


b. 刻印 D面横棧



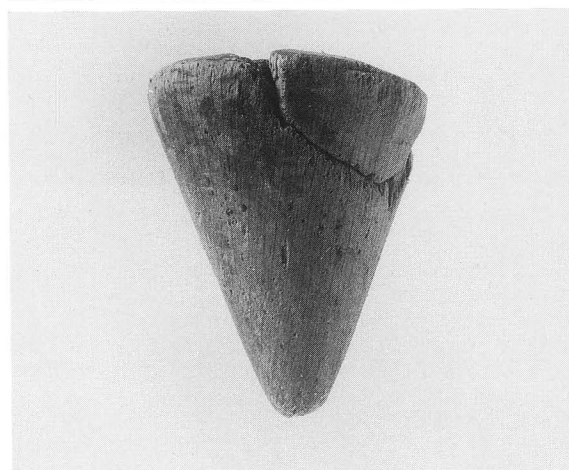
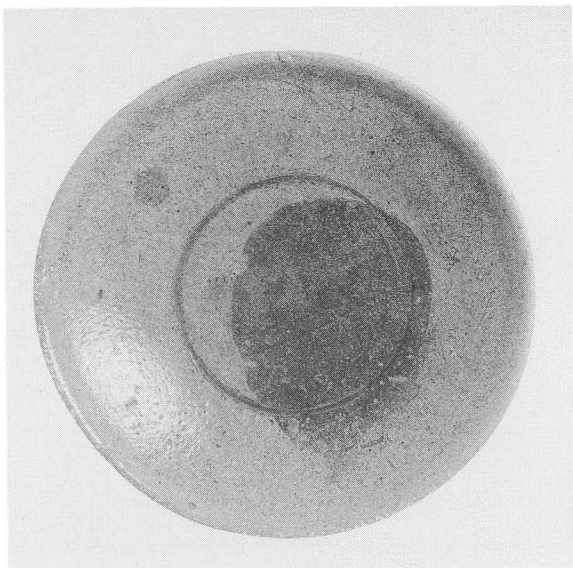
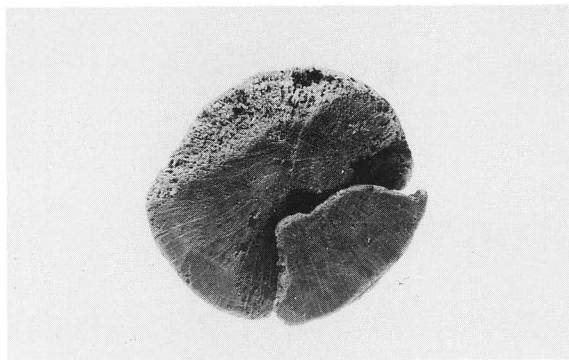
a. 鍵

(約 $\frac{1}{3}$ )



a. 錢貨 和同開称1 萬年通寶2~5, 神功開寶6~14

(約 $\frac{1}{1}$ )



a. 独楽

( $\frac{1}{1.5}$ )

b. 灰釉陶器

(約 $\frac{1}{3}$ )



c. 挽物

(約 $\frac{1}{2}$ )





高槻市文化財年報 平成 2 年度

平成 4 年 3 月 31 日

発 行 高 槻 市 教 育 委 員 会  
高槻市立埋蔵文化調査センター  
〒569 高槻市南平台 5 丁目 21-1

印 刷 株式会社 邦 文 社  
〒533 大阪市東淀川区大桐 1 丁目 4 番 9 号