



1



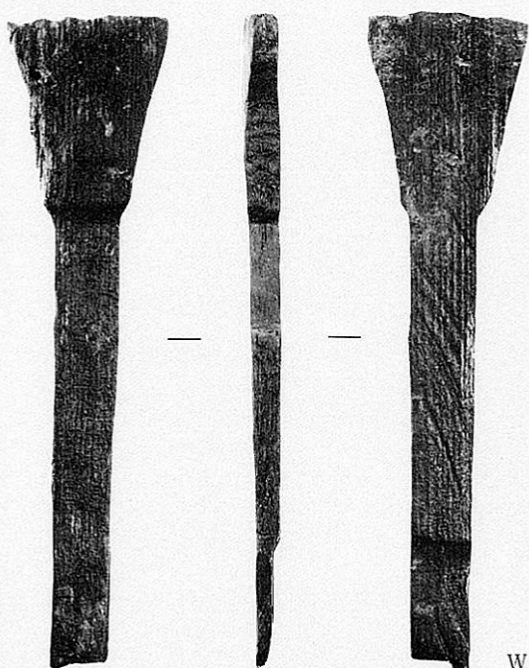
2



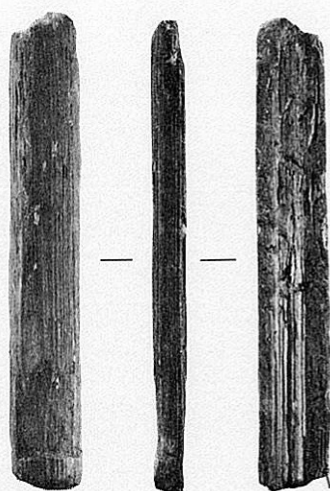
5



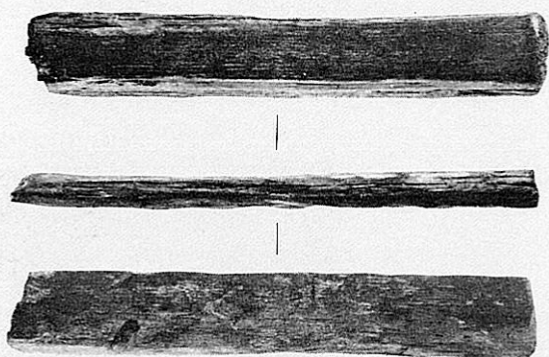
4



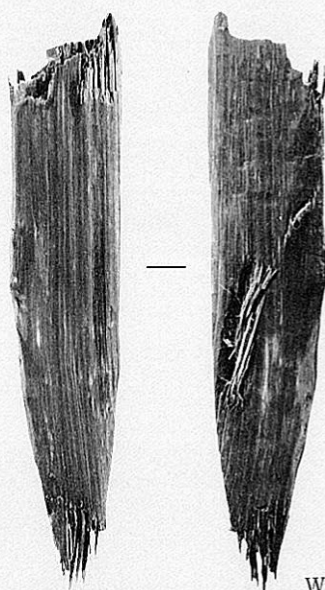
W001
1 : 3



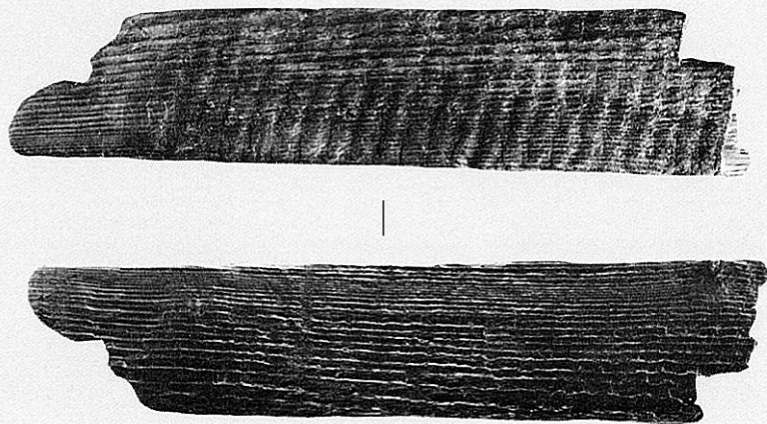
W002
1 : 3



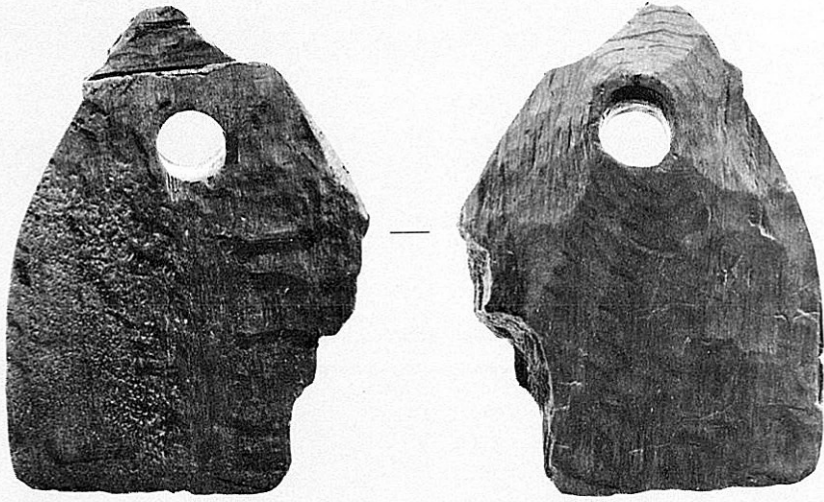
W003
1 : 3



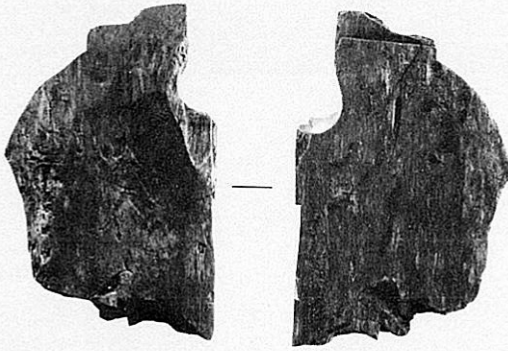
W004
1 : 4



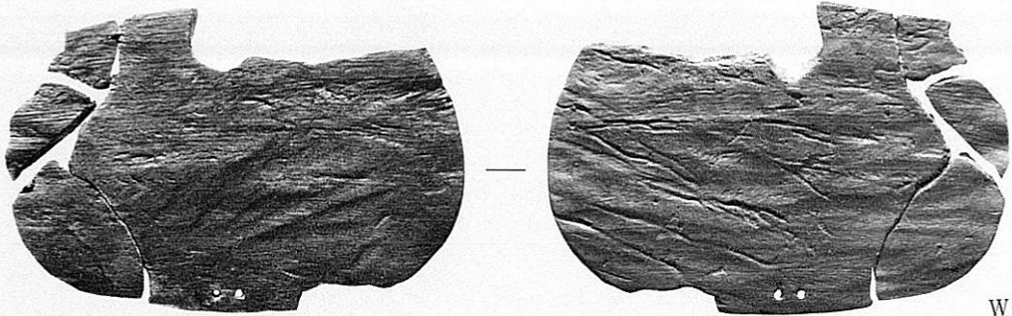
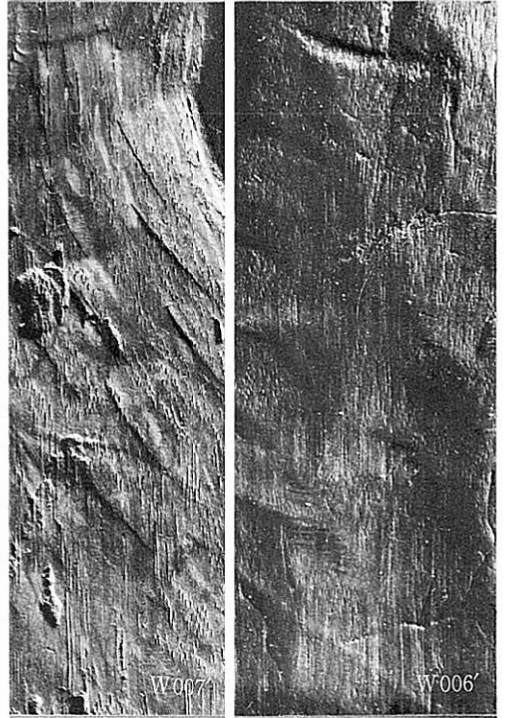
W005
1 : 4



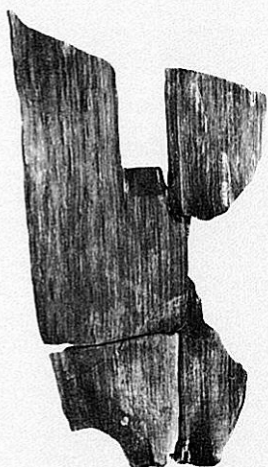
W006
1 : 4



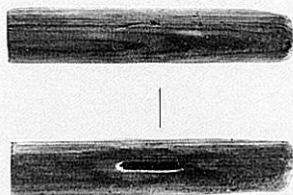
W007
1 : 4



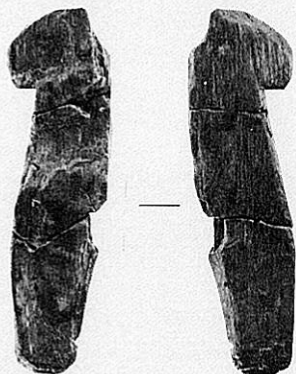
W008
1 : 4



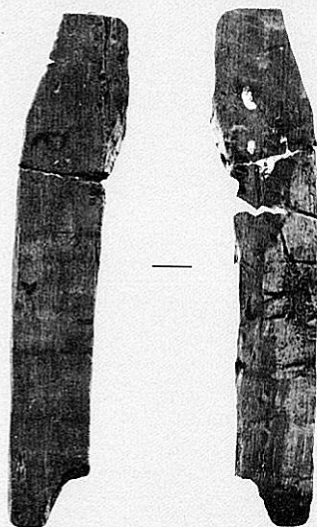
W009
1 : 4



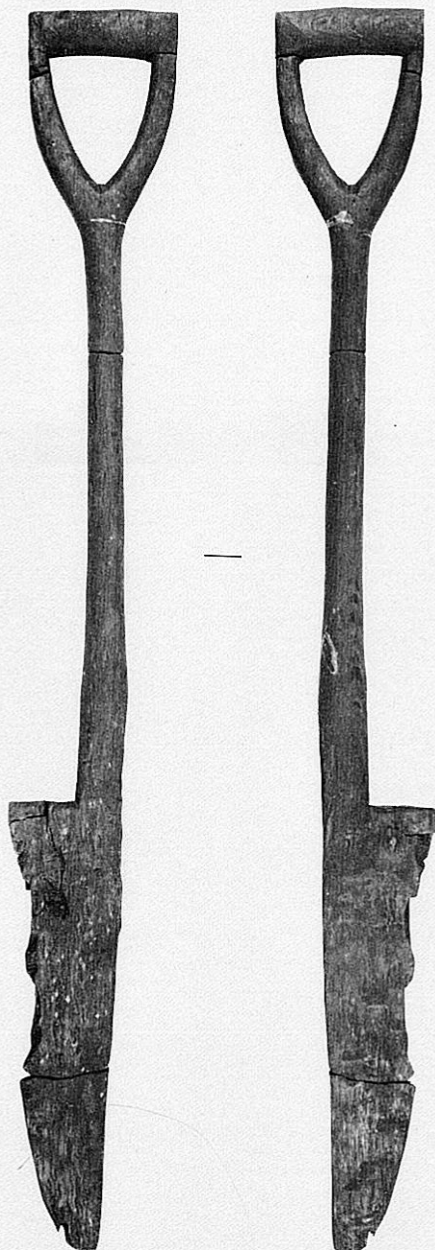
W011
1 : 3



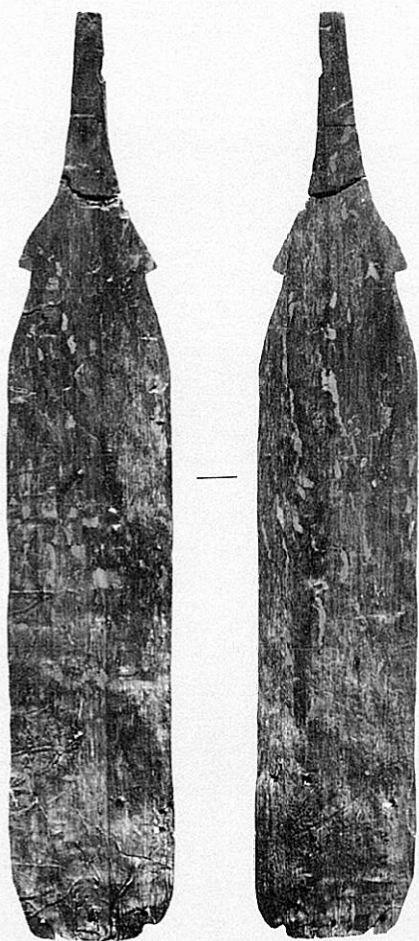
W012
1 : 4



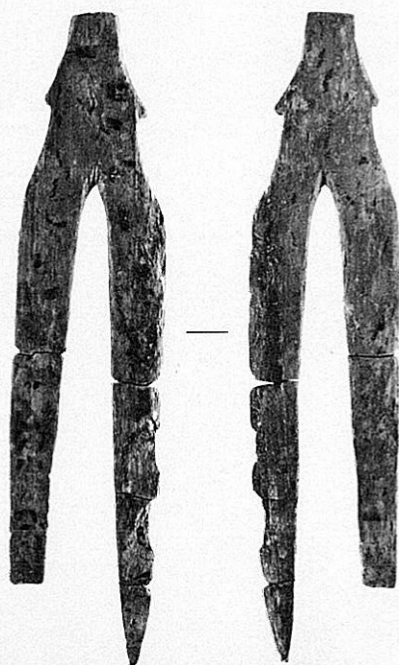
W013
1 : 4



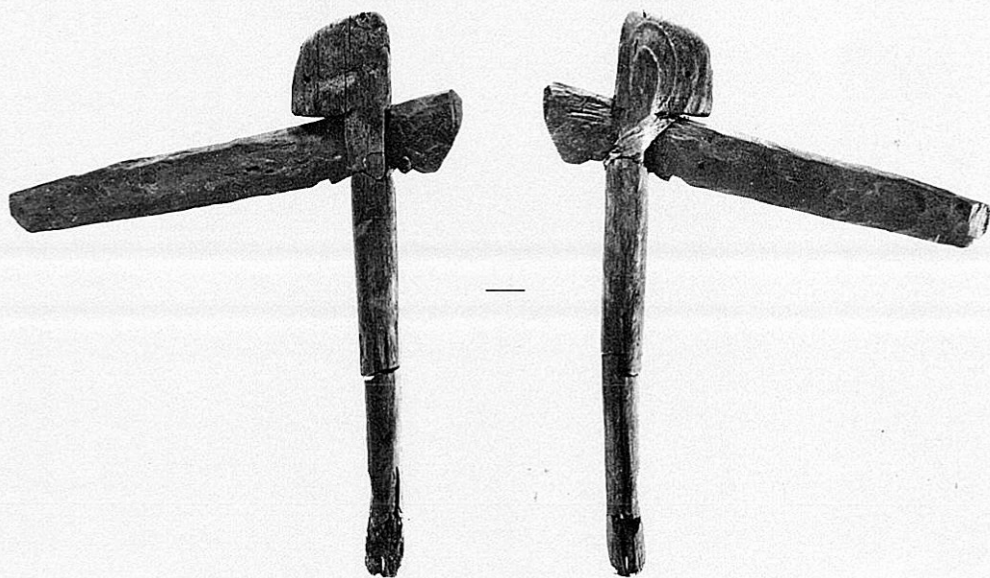
W010
1 : 6



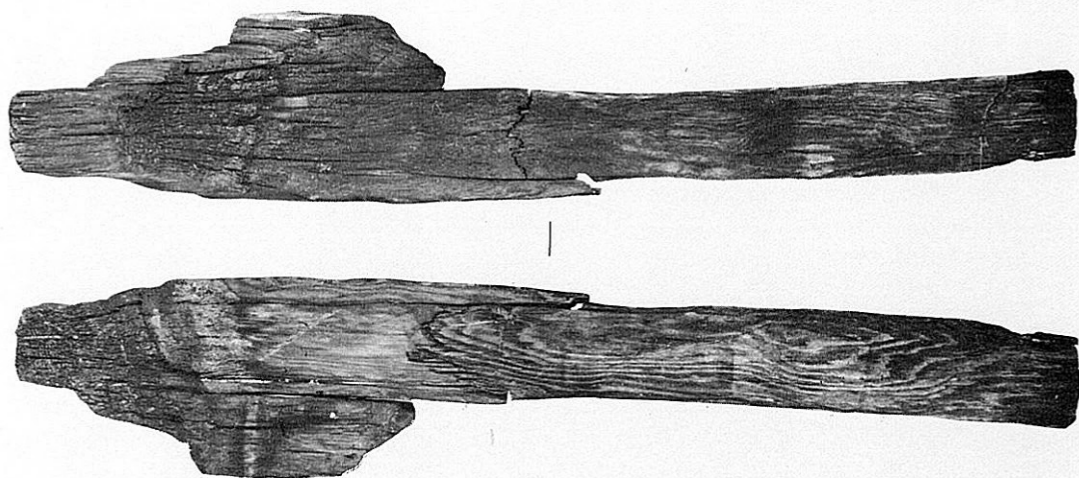
W014
1 : 6



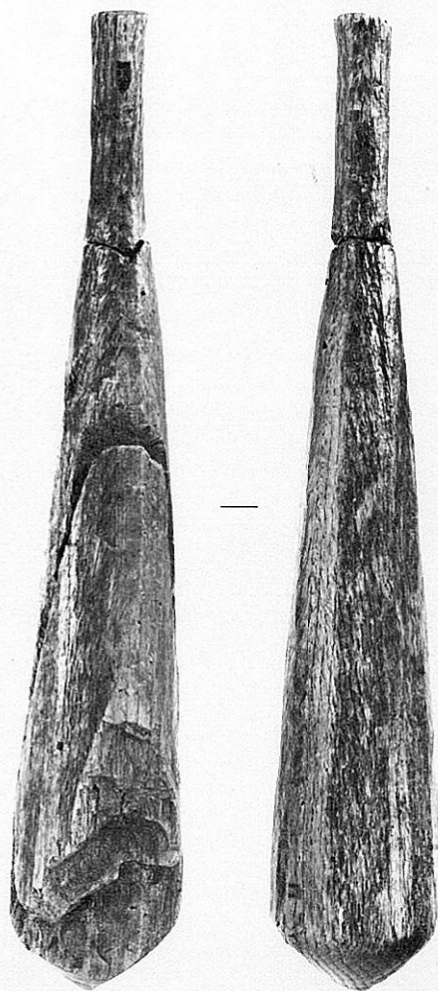
W015
1 : 6



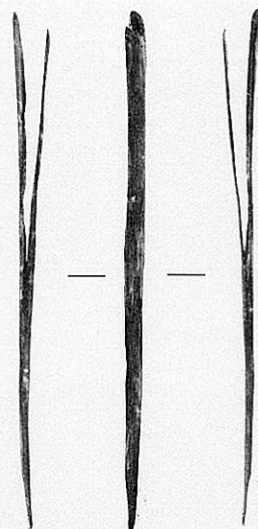
W016
1 : 4



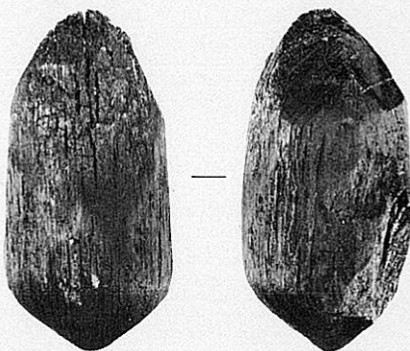
W172
1 : 6



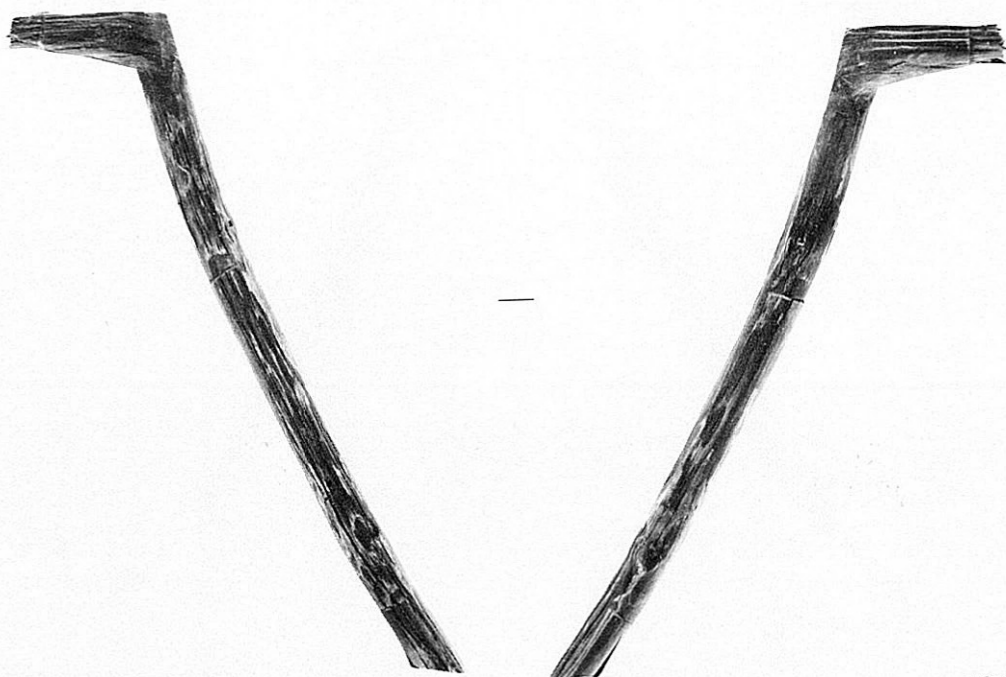
W017
1 : 4



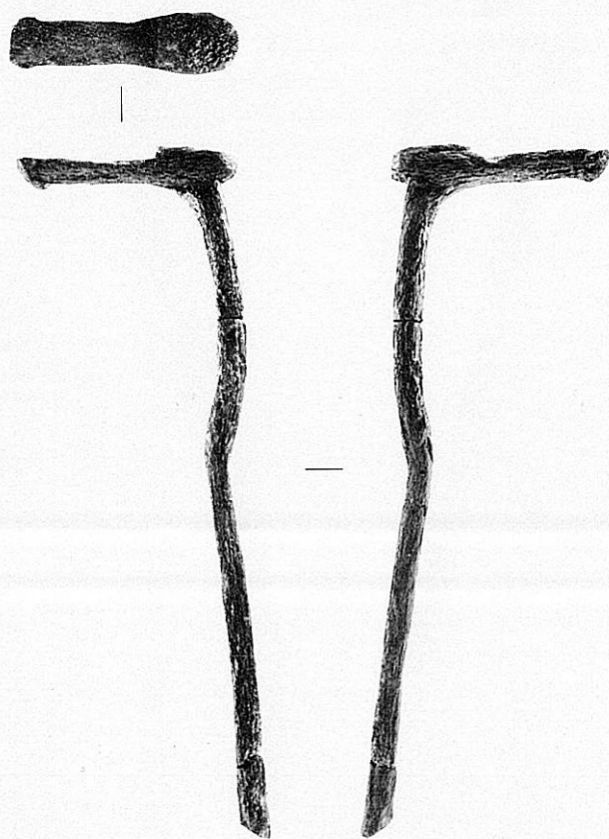
W044
1 : 3



W018
1 : 4



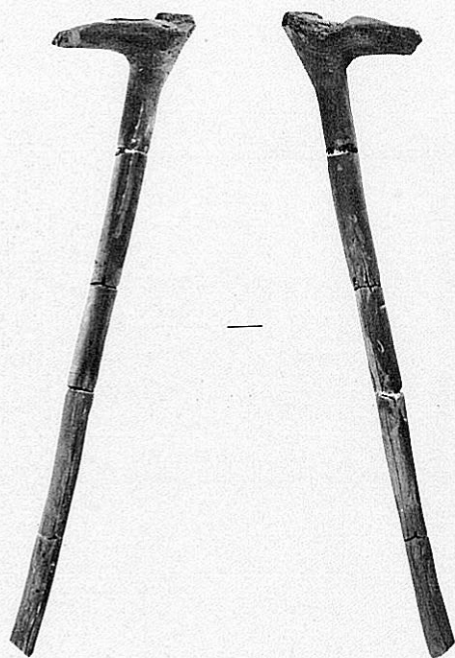
W019
1 : 4



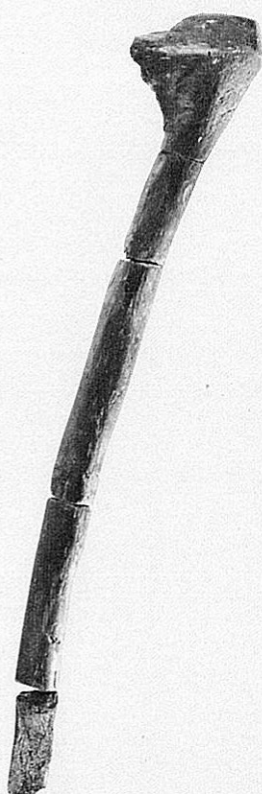
W020
1 : 6



W021
1 : 4



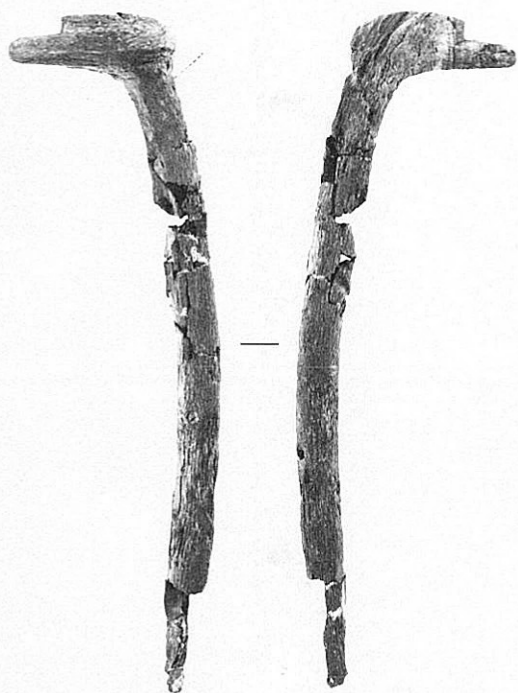
W022
1 : 6



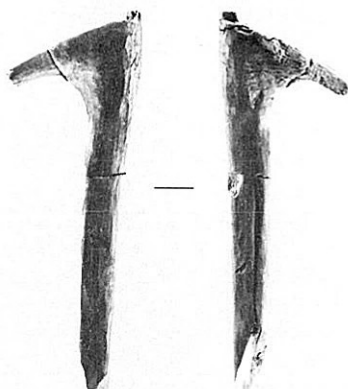
W023
1 : 6



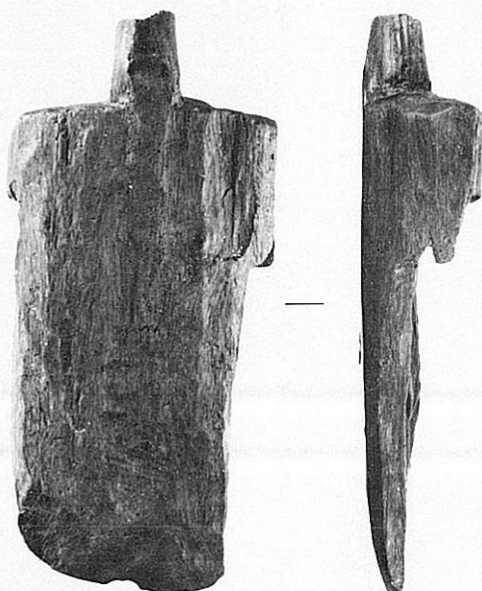
W021



W024
1 : 4



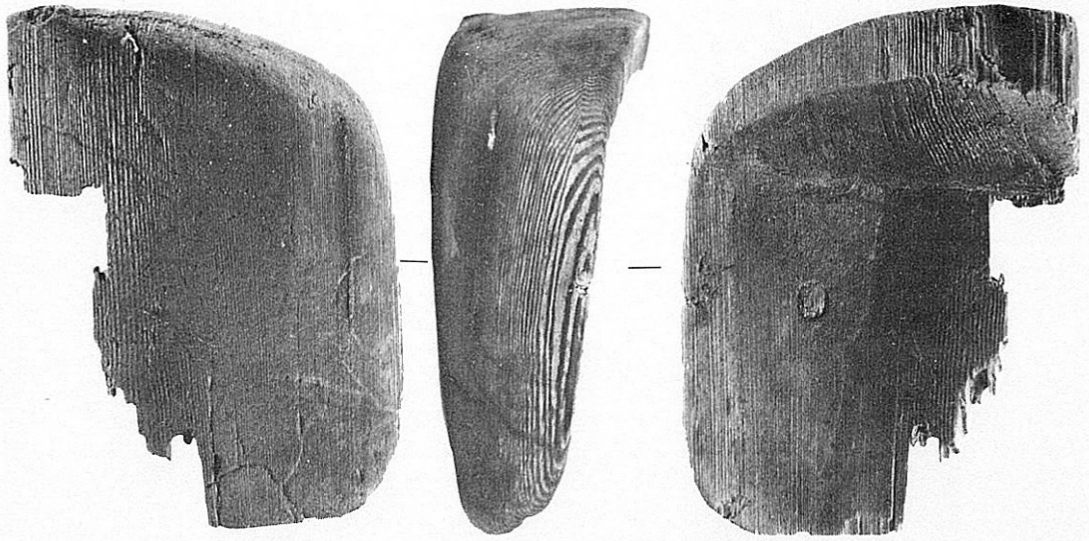
W025
1 : 4



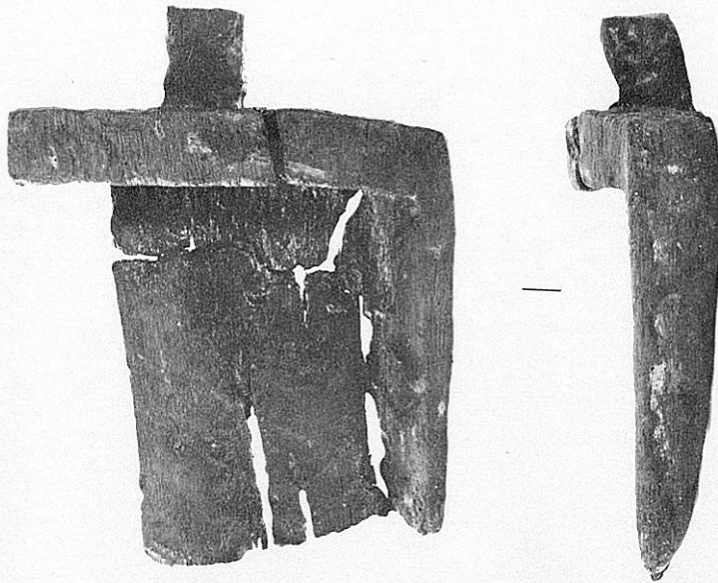
W037
1 : 3



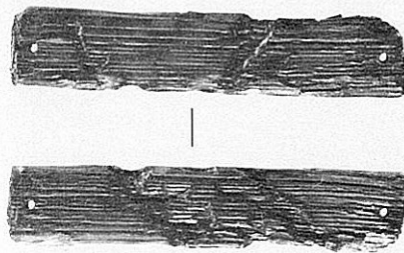
W037'



W038
1 : 3

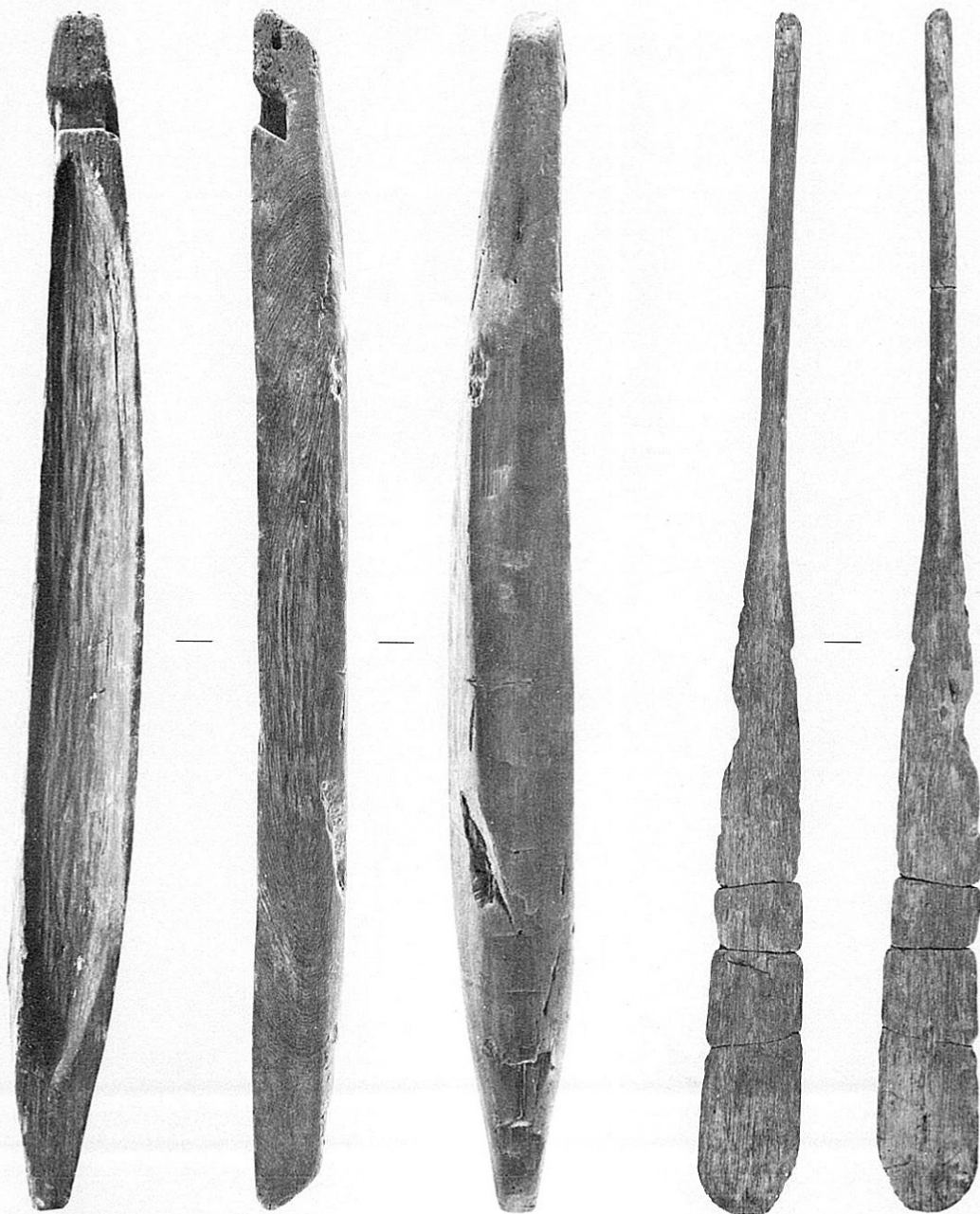


W039
1 : 3



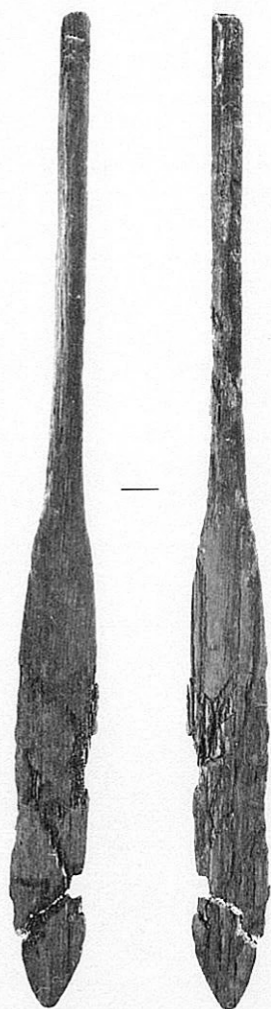
W040

1 : 3

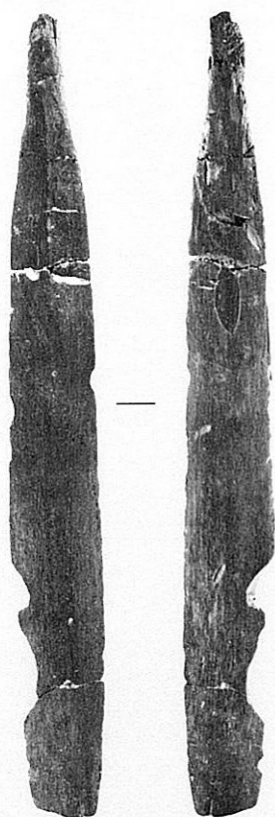


W036
1 : 4

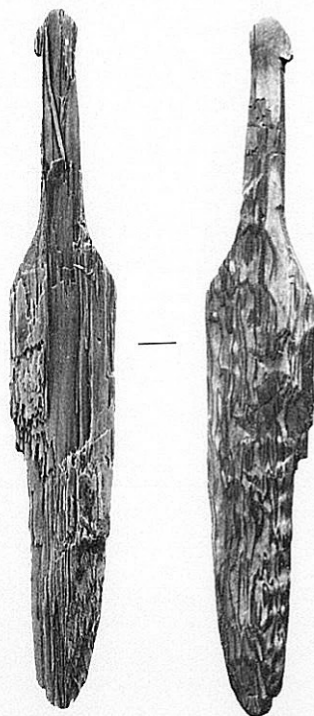
W026
1 : 6



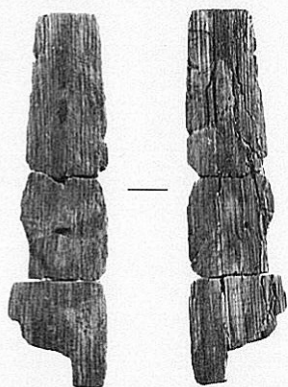
W027
1 : 6



W031
1 : 6



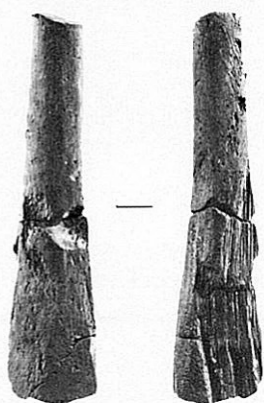
W030
1 : 6



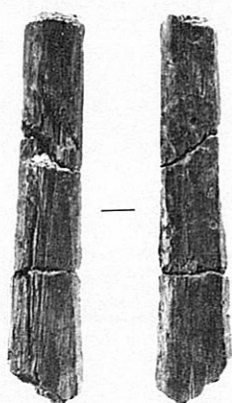
W029
1 : 6



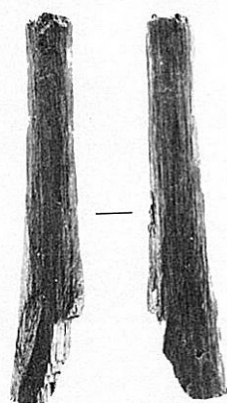
W029'



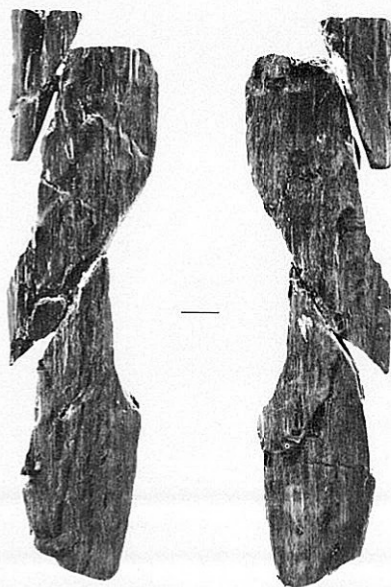
W032
1 : 4



W033
1 : 4



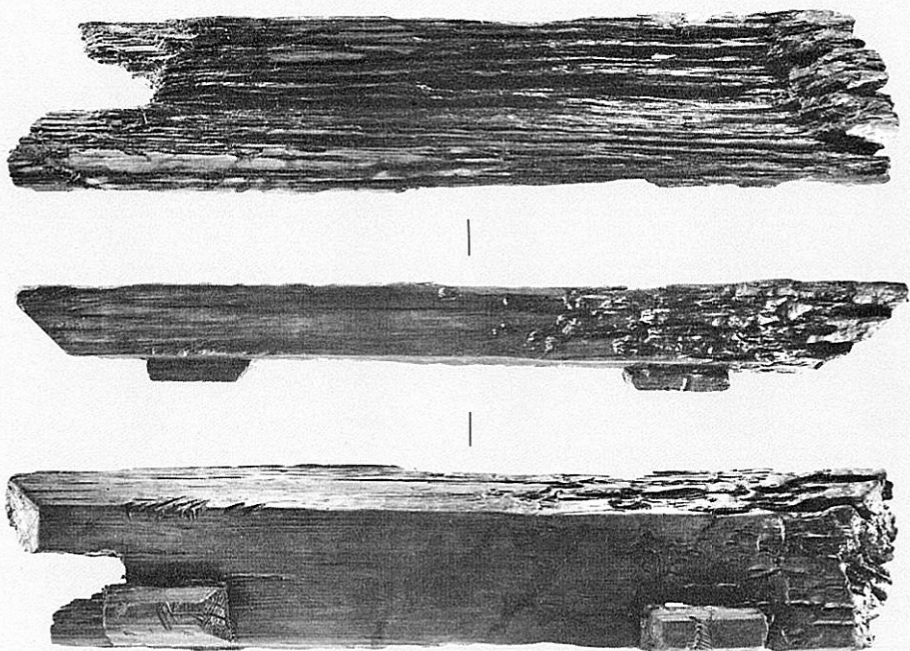
W034
1 : 4



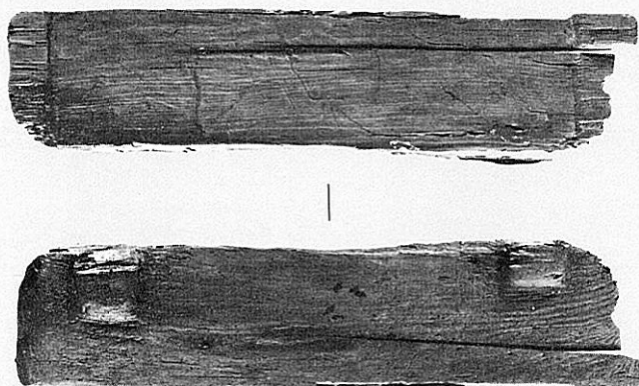
W028
1 : 4



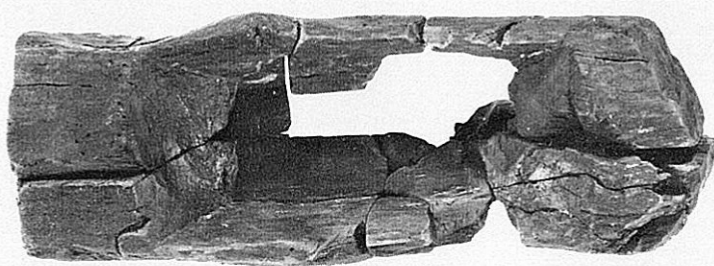
W035
1 : 4



W041
1 : 6



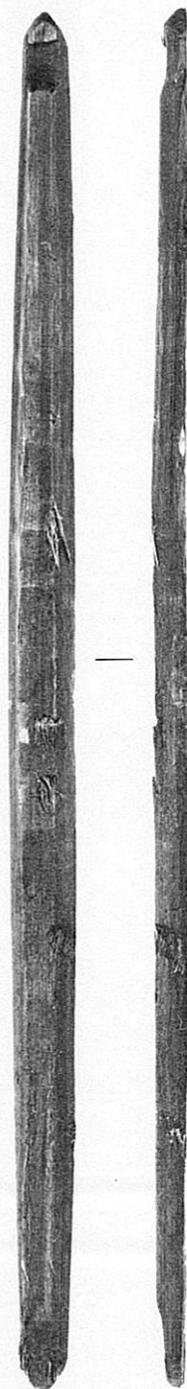
W042
1 : 6



W043
1 : 6



W043



W175
1 : 4



W046
1 : 4



W048
1 : 4



W049
1 : 3



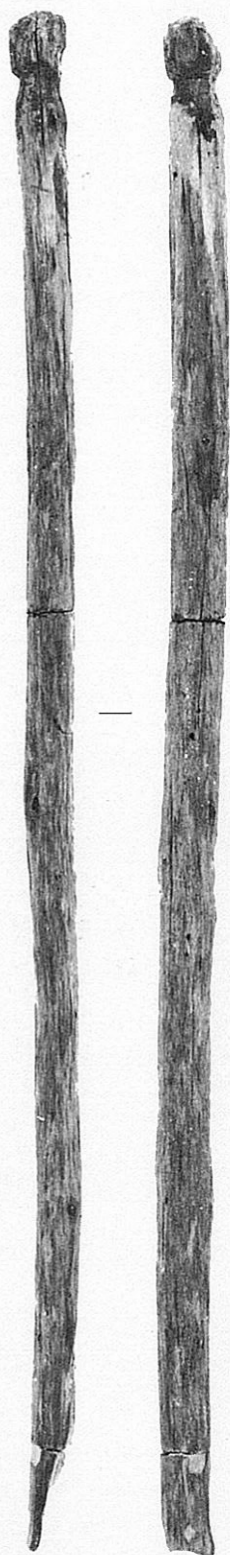
W050
1 : 3



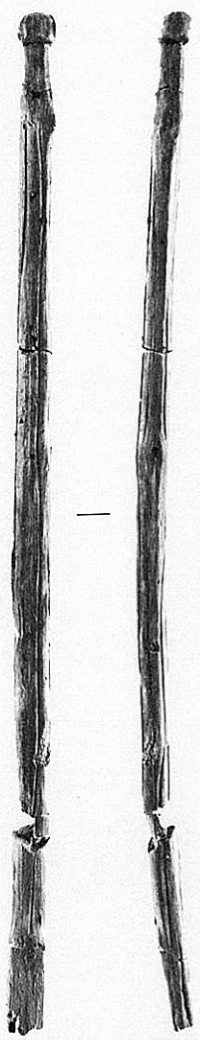
W051
1 : 3



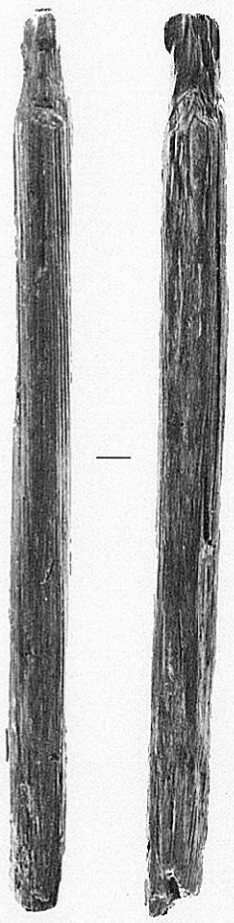
W052
1 : 3



W 054
1 : 2.7



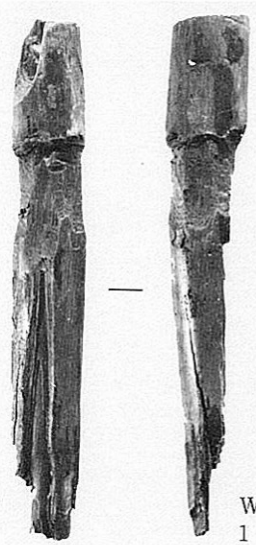
W053
1 : 6



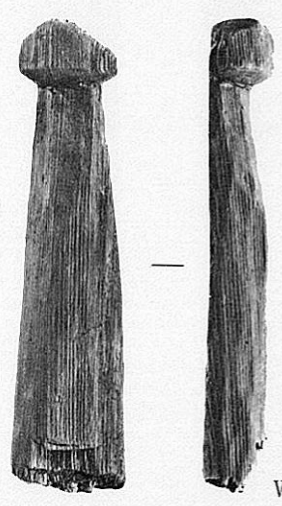
W055
1 : 4



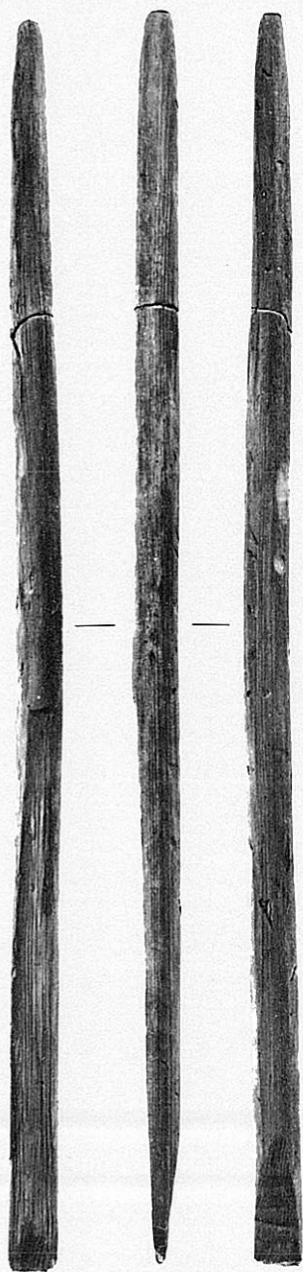
W047
1 : 4



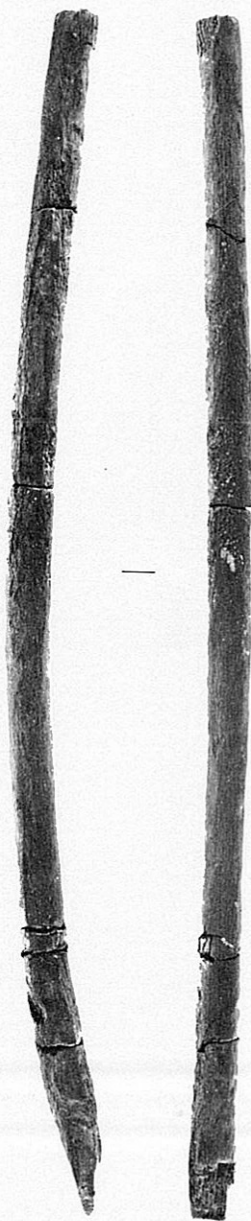
W056
1 : 3



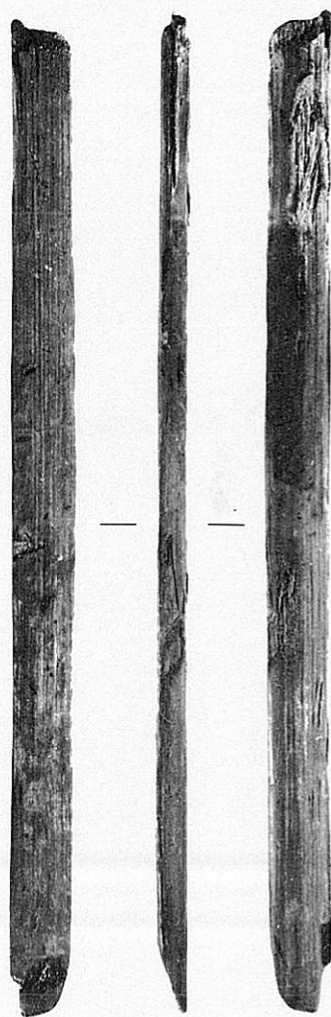
W045
1 : 3



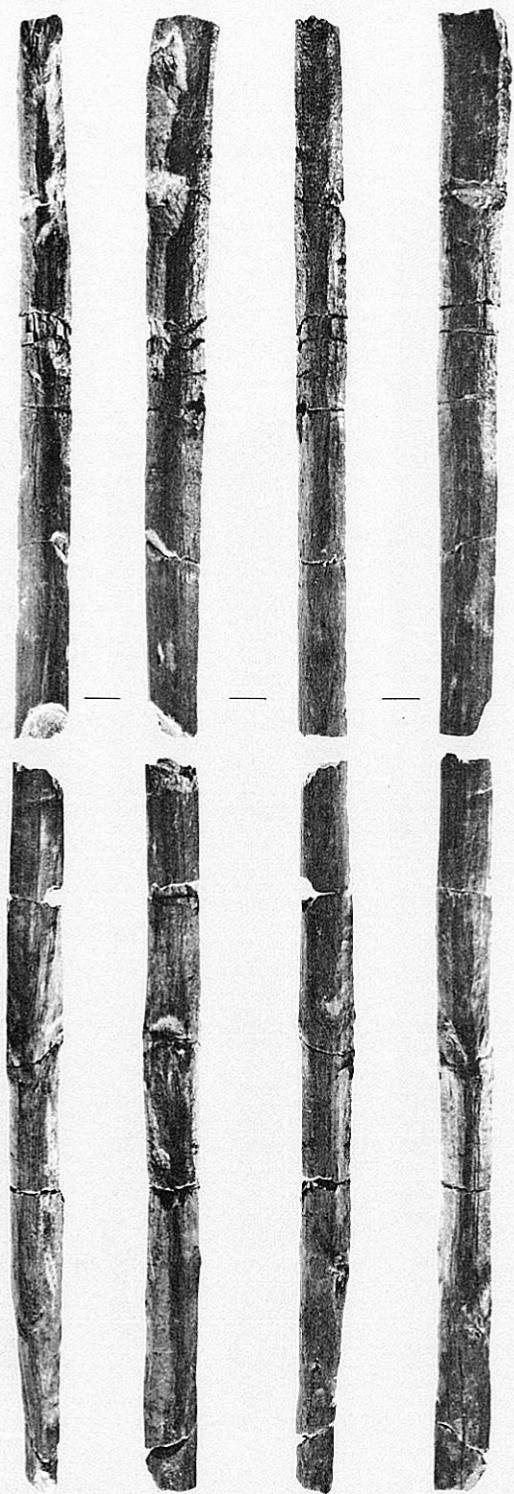
W057
1 : 4



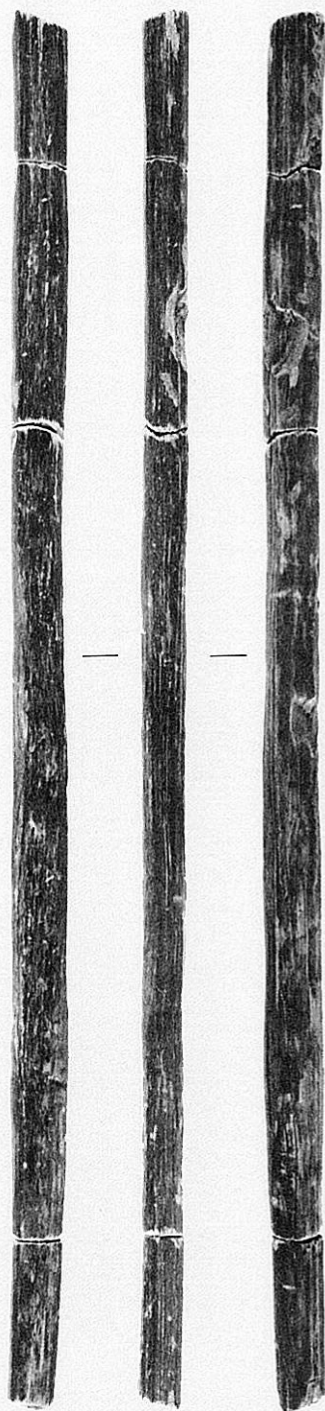
W058
1 : 4



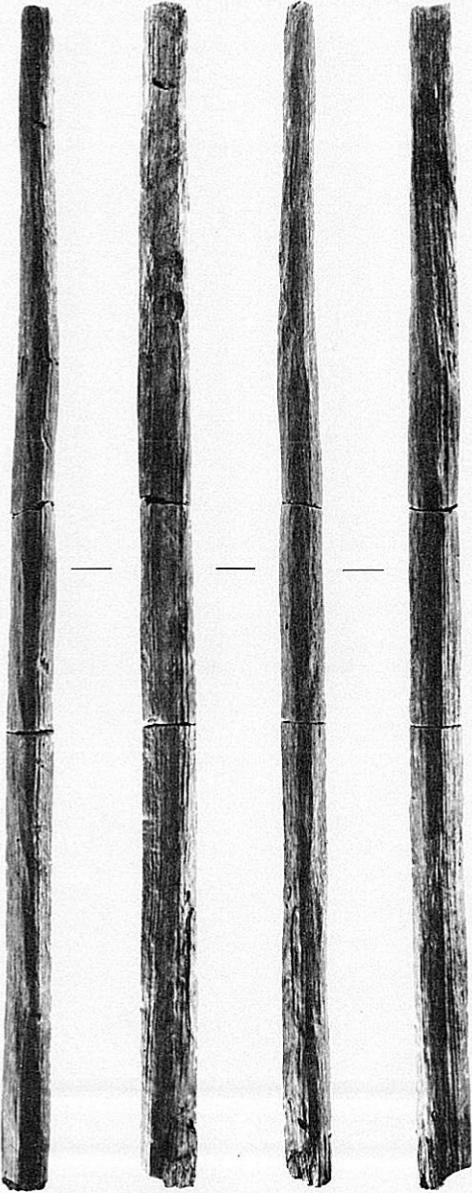
W059
1 : 4



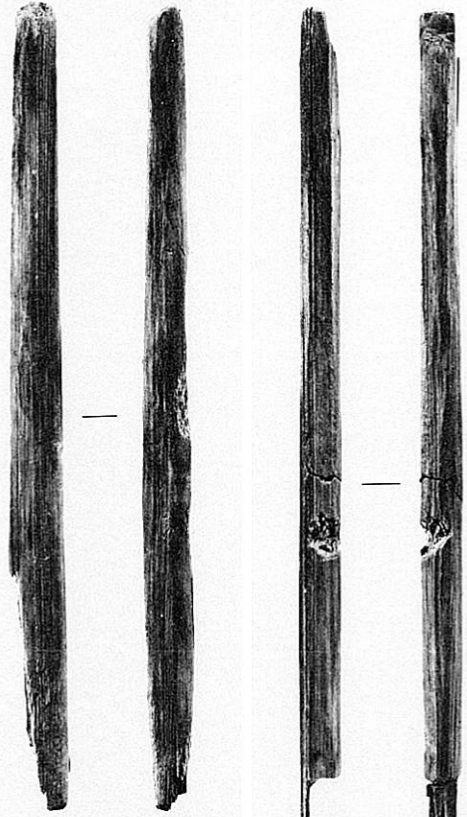
W060
1 : 5



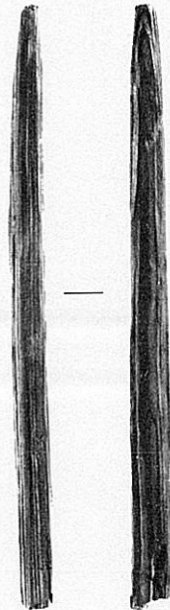
W061
1 : 5



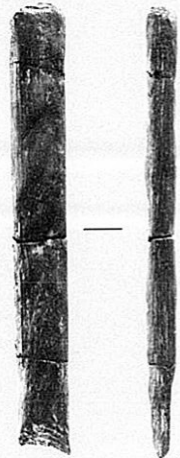
W062
1 : 4



W063
1 : 4

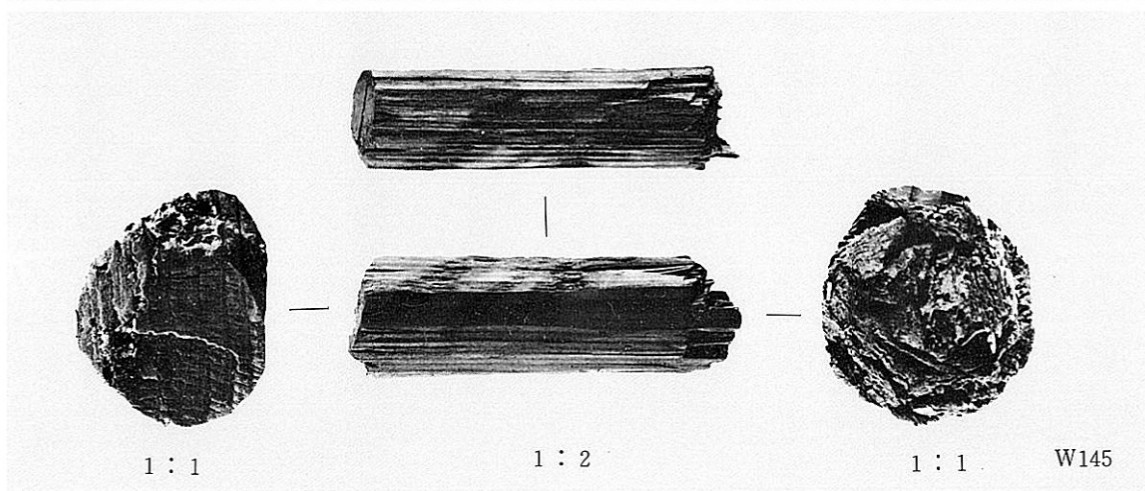


W064
1 : 4



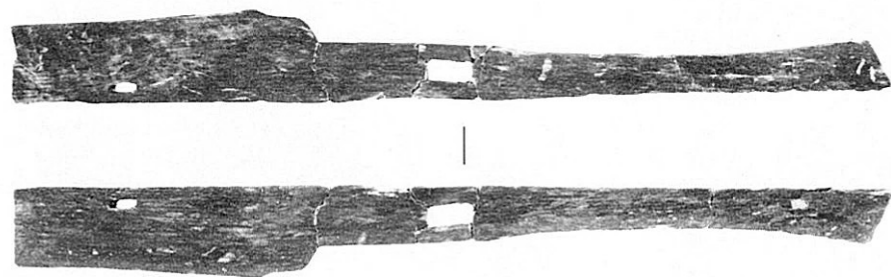
W065
1 : 4

W066
1 : 4



W142~144 柄状木製品 W145 切断痕のある棒状加工木

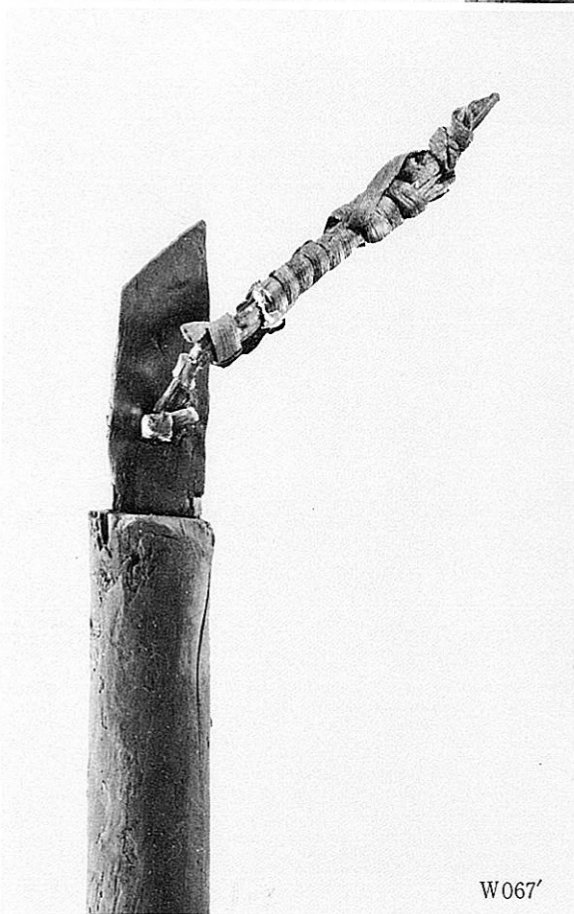
W067
1 : 6



W067
1 : 6



W067'

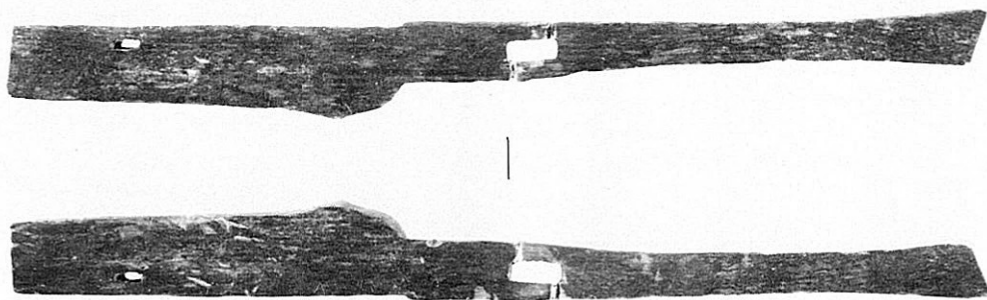


W067'

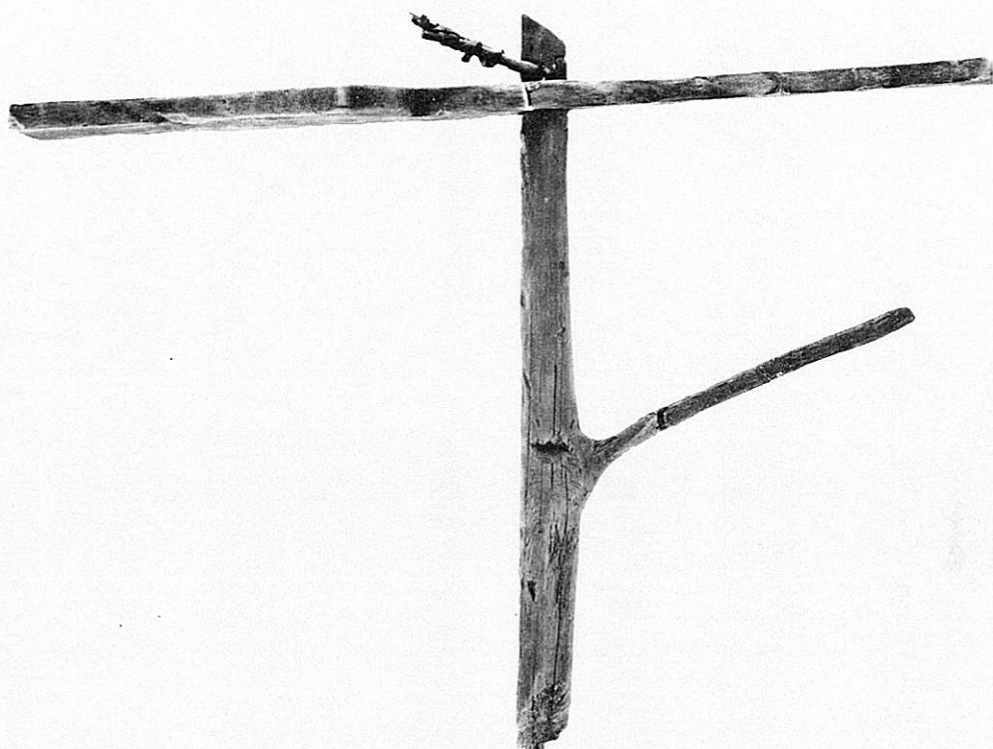


W067'

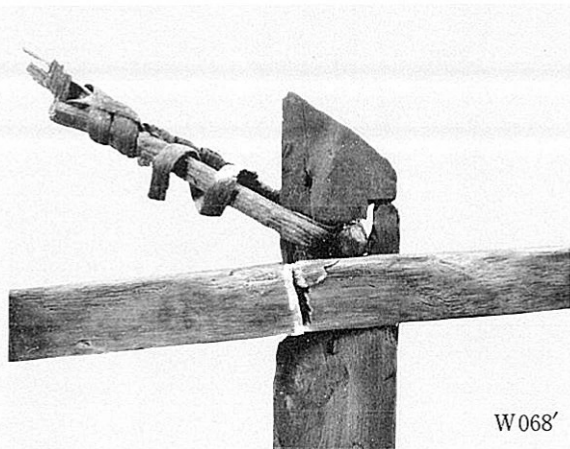
W067' 用途不明木製品(枝付棒状組合せ木製品)部分拡大



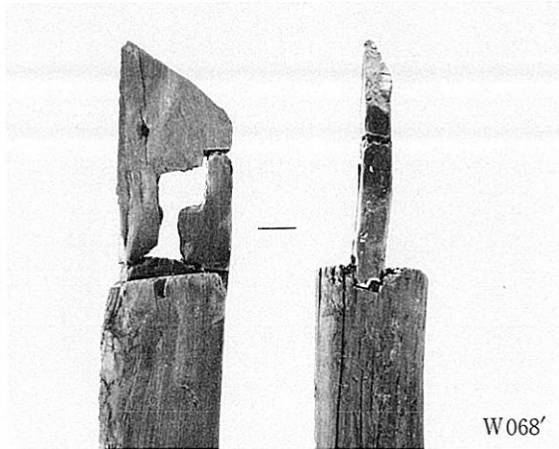
W068
1 : 6



W068
1 : 6

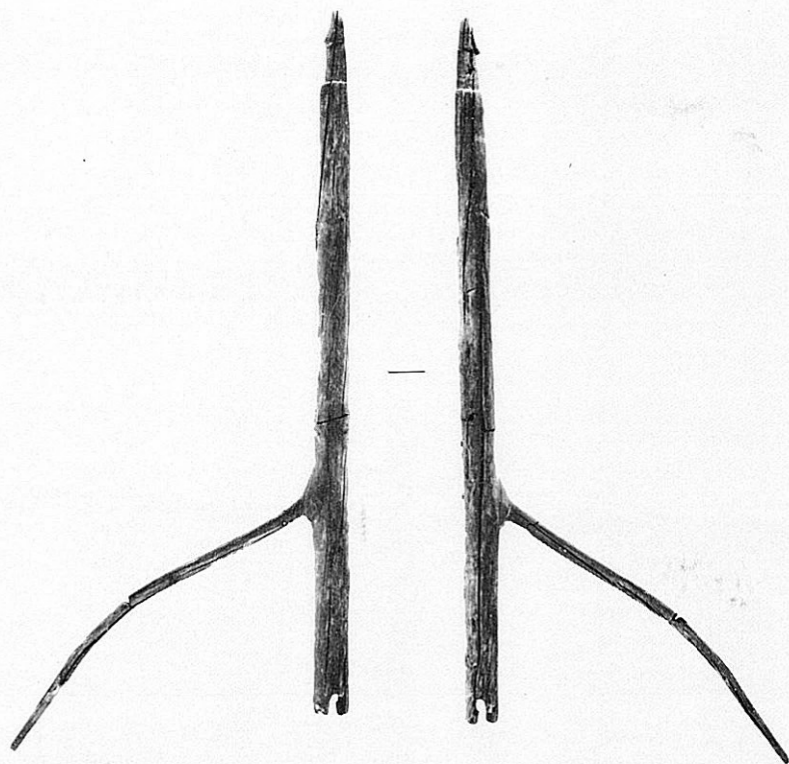


W068'

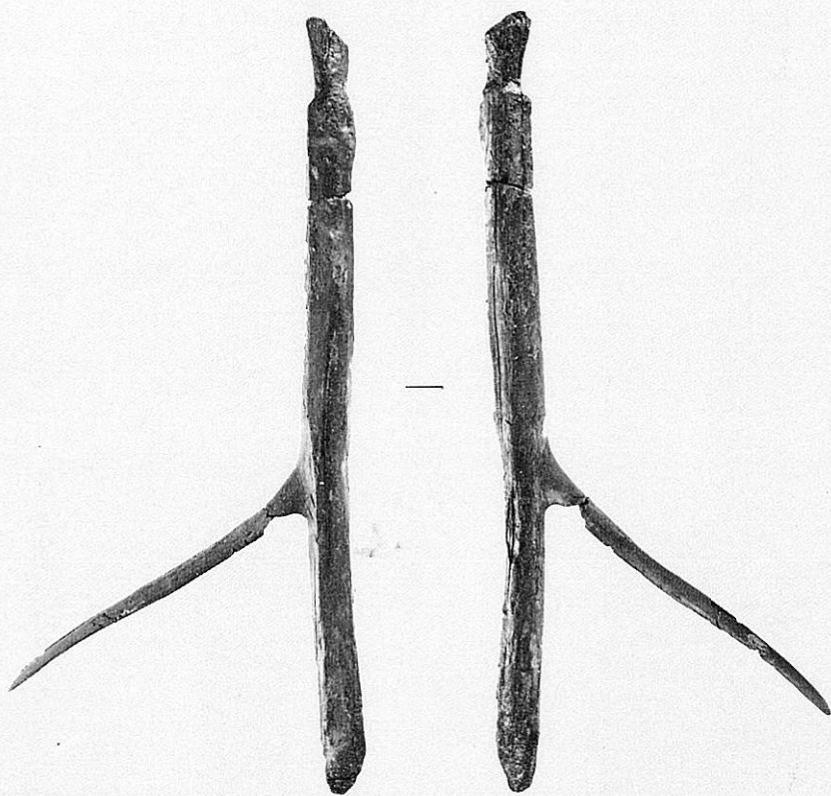


W068'

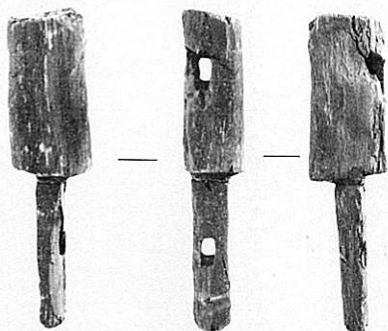
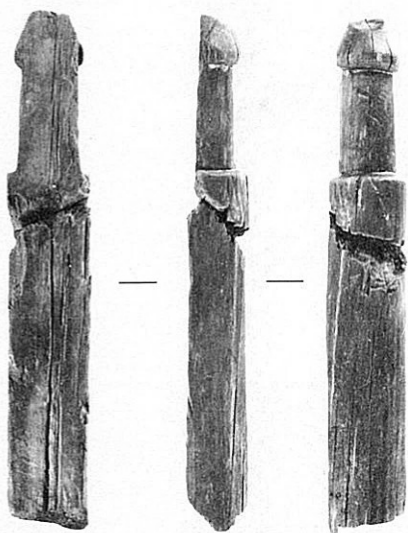
W068 用途不明木製品(枝付棒状組合せ木製品)



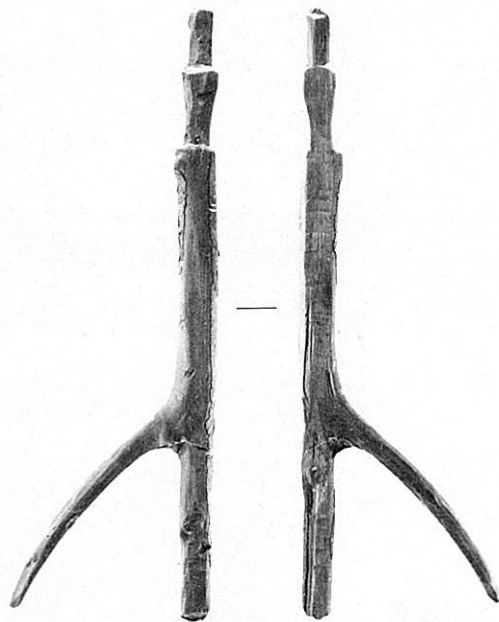
W070
1 : 8



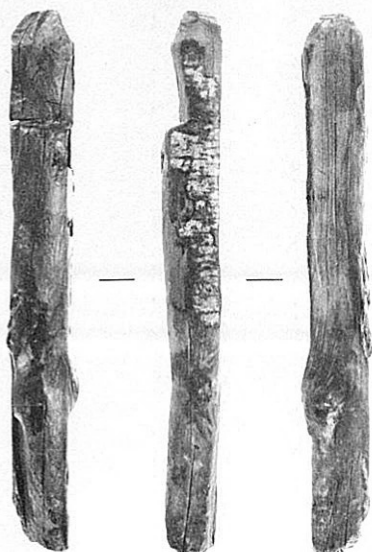
W071
1 : 6



W073
1 : 4



W069
1 : 6



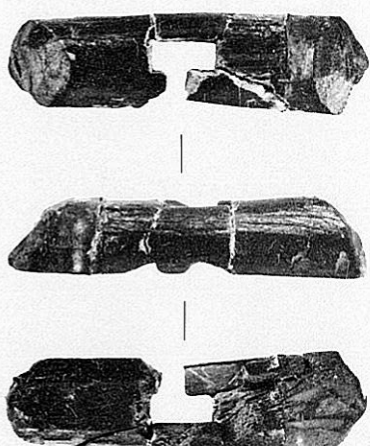
W072
1 : 4



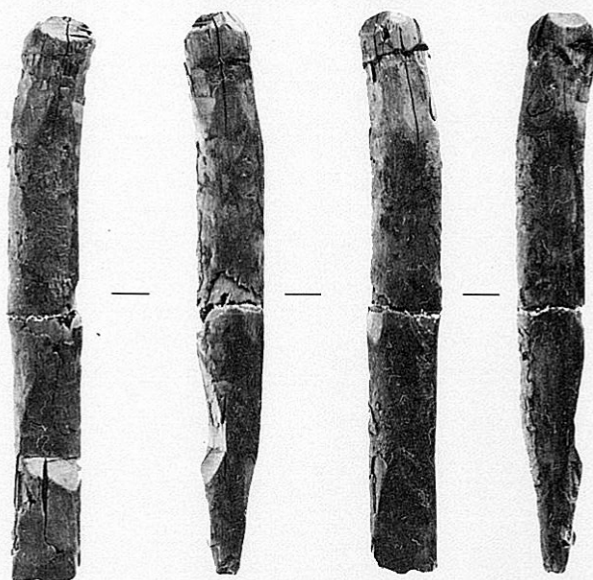
W074
1 : 4



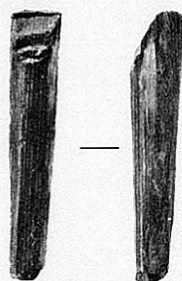
W075
1 : 4



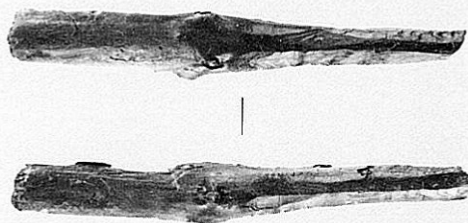
W081
1 : 2



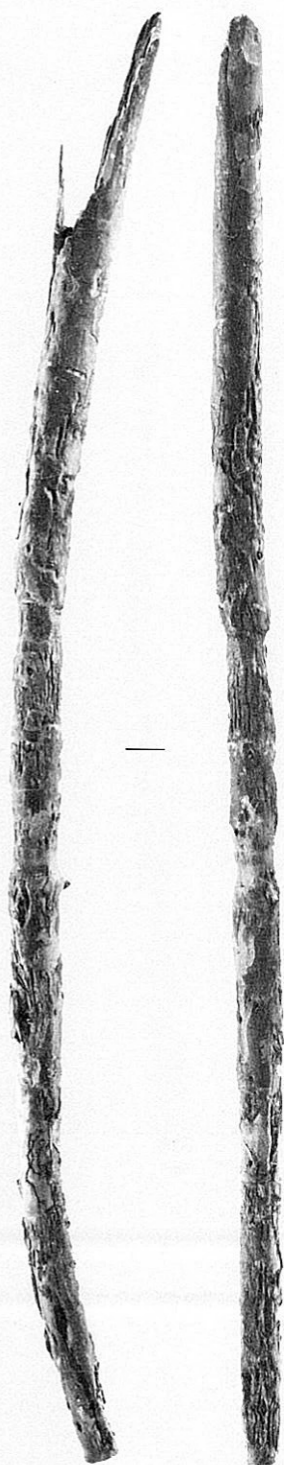
W077
1 : 3



W079
1 : 3



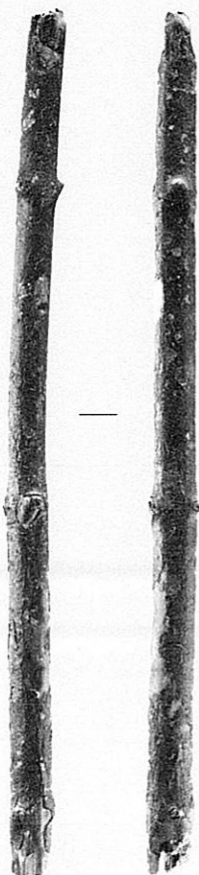
W082
1 : 3



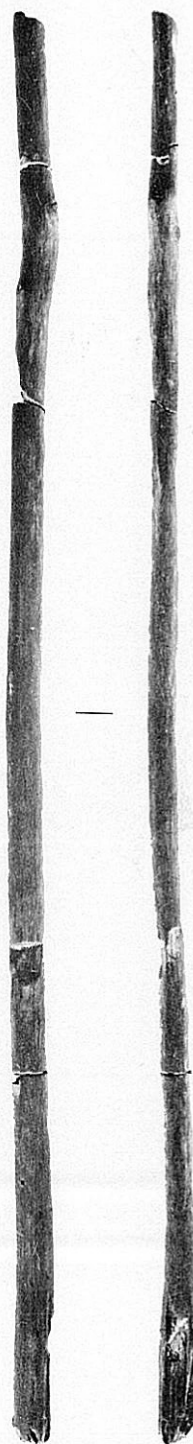
W084
1 : 4



W173
1 : 2



W174
1 : 3



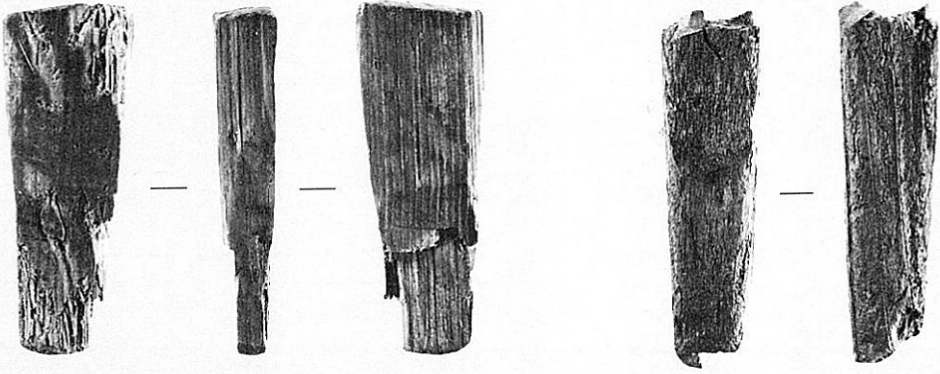
W085
1 : 4



W083
1 : 4

W086
1 : 6

W076
1 : 4



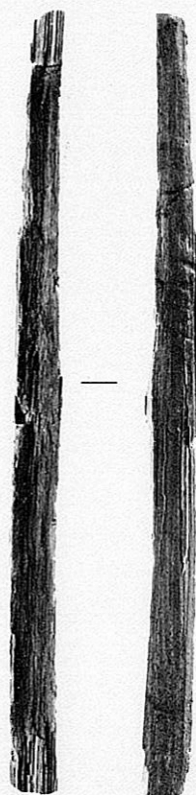
W078
1 : 3

W087
1 : 3

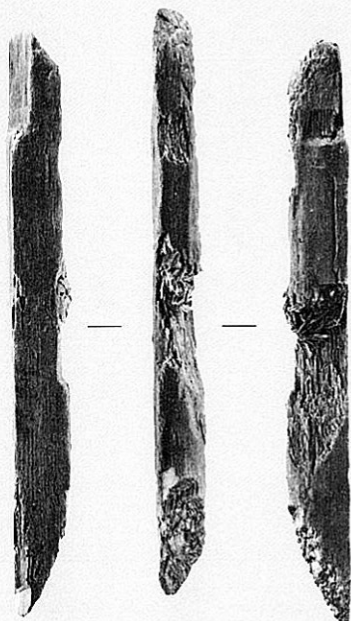


W088
1 : 4

W089
1 : 3



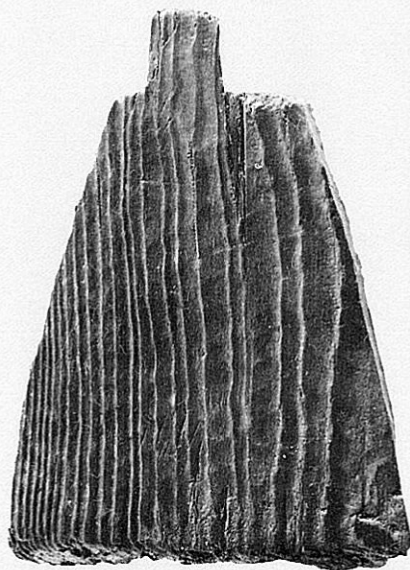
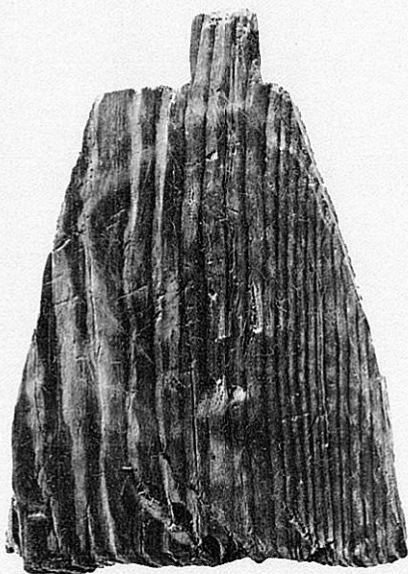
W090
1 : 4



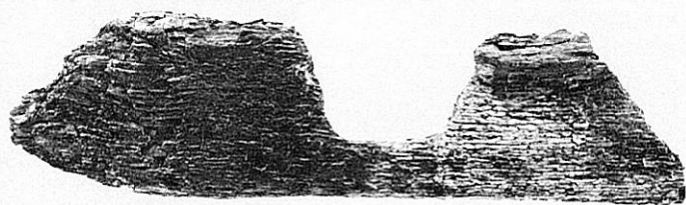
W091
1 : 3



W099'



W099
1 : 4



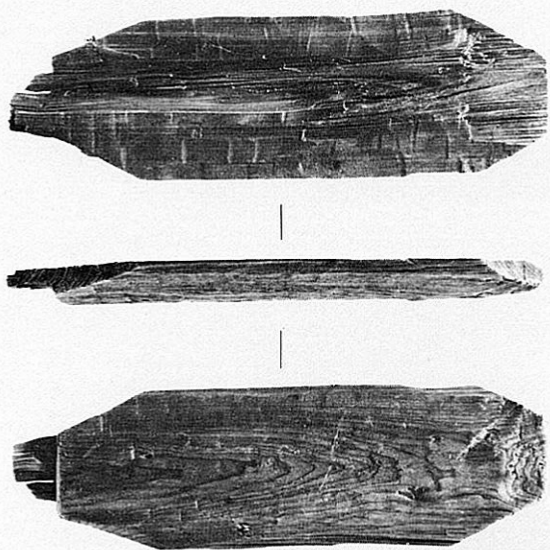
W 092
1 : 4



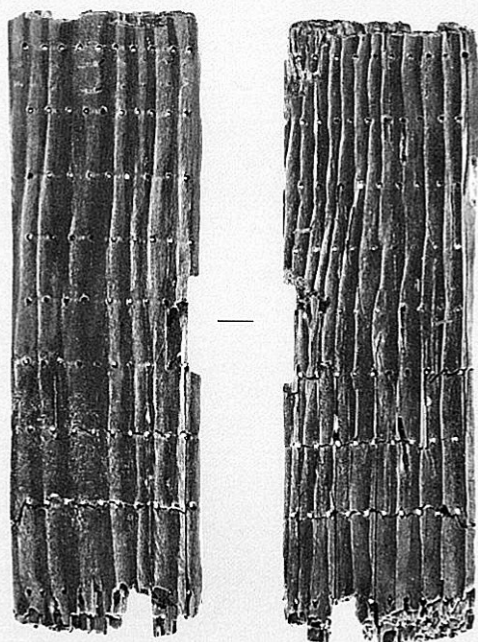
W100
1 : 4



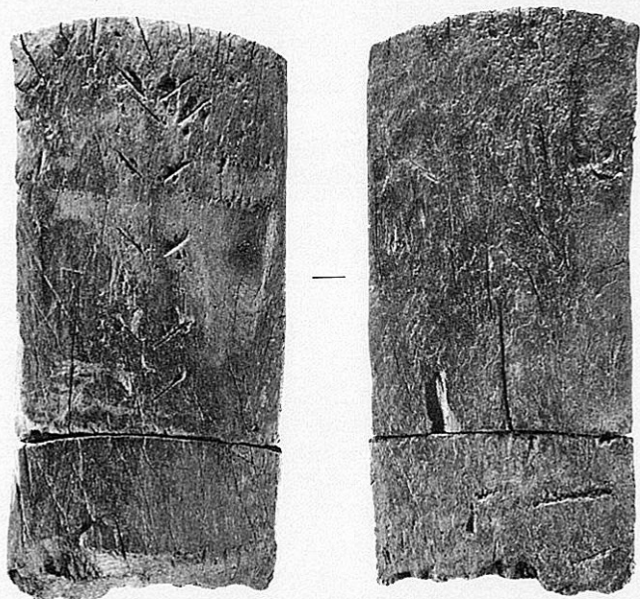
W096
1 : 4



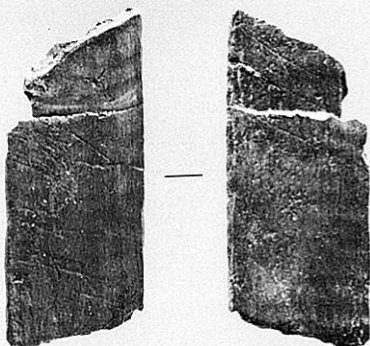
W176
1 : 4



W093
1 : 3



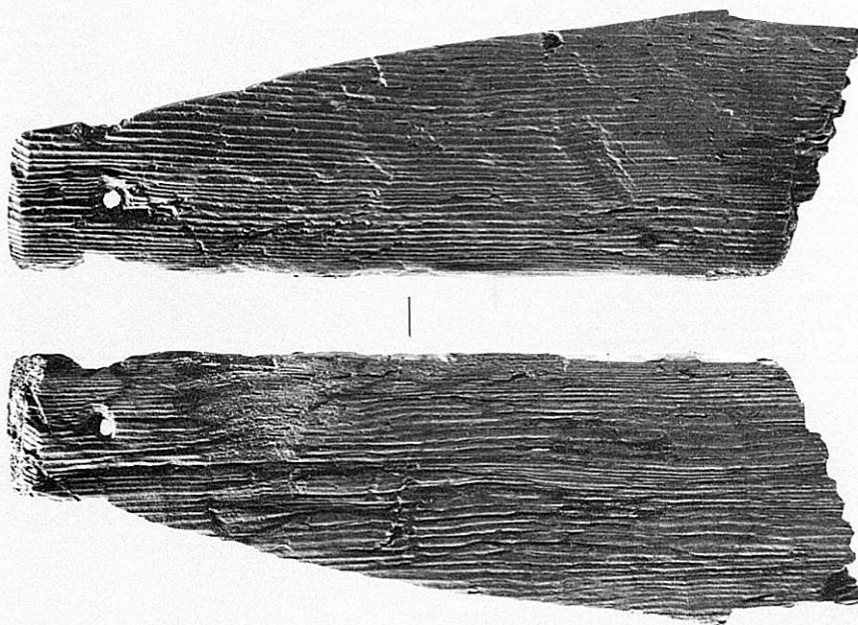
W095
1 : 5



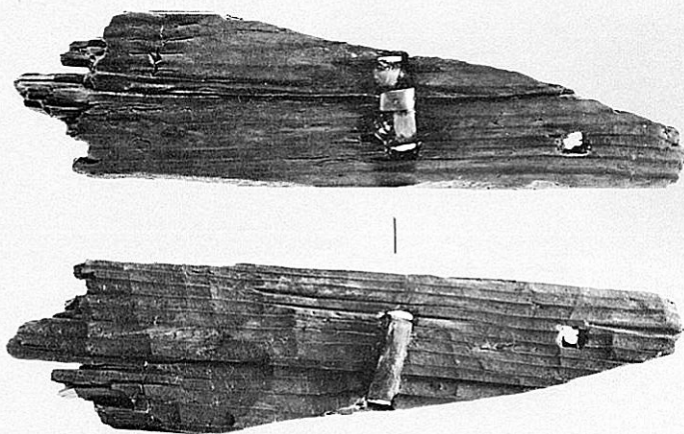
W101
1 : 4



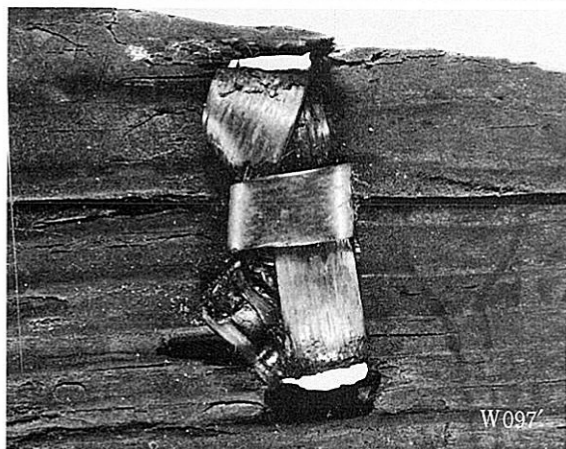
W101

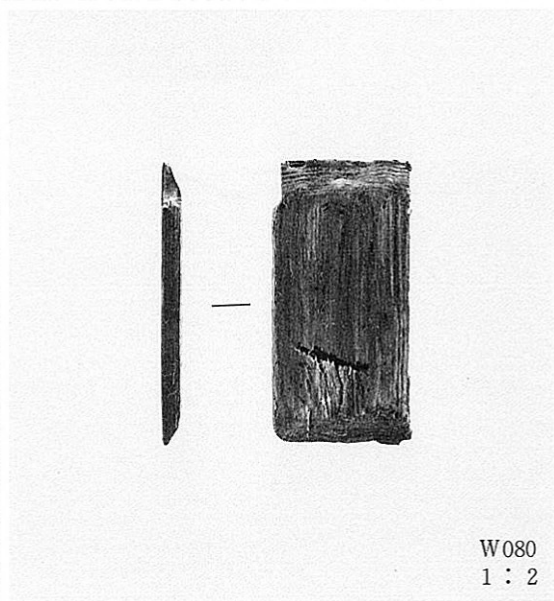
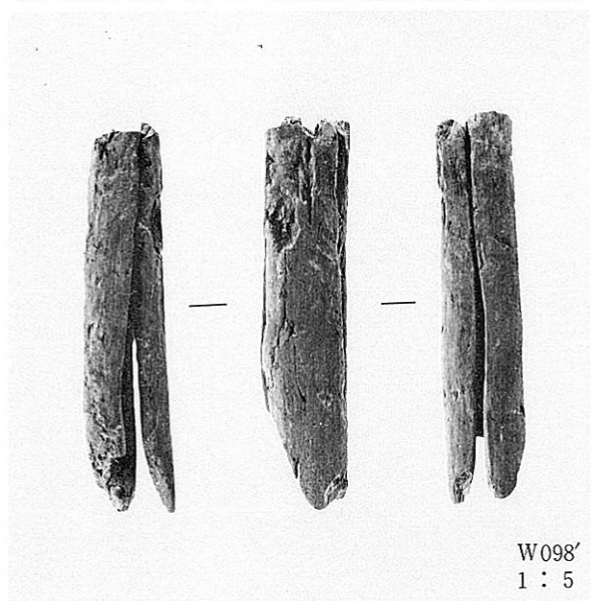
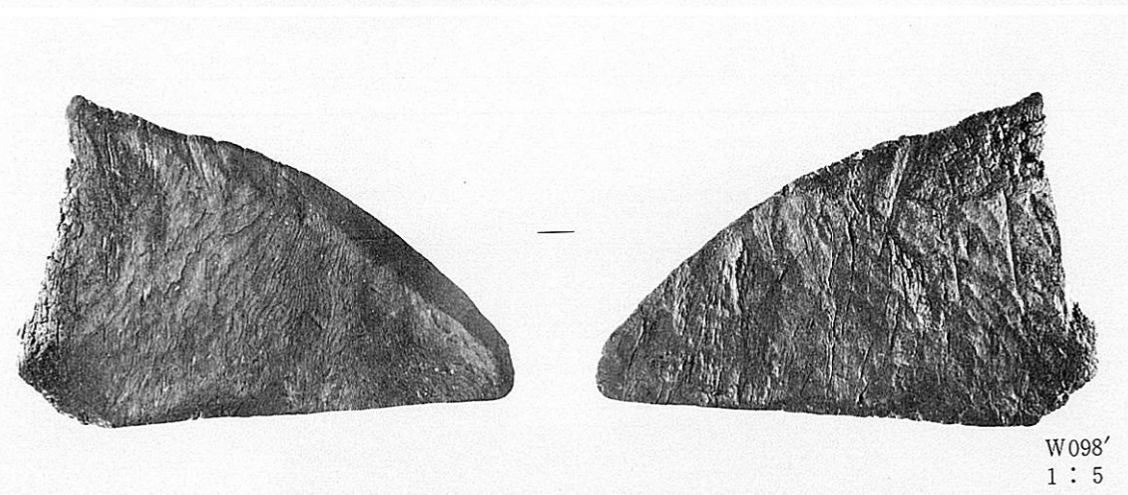
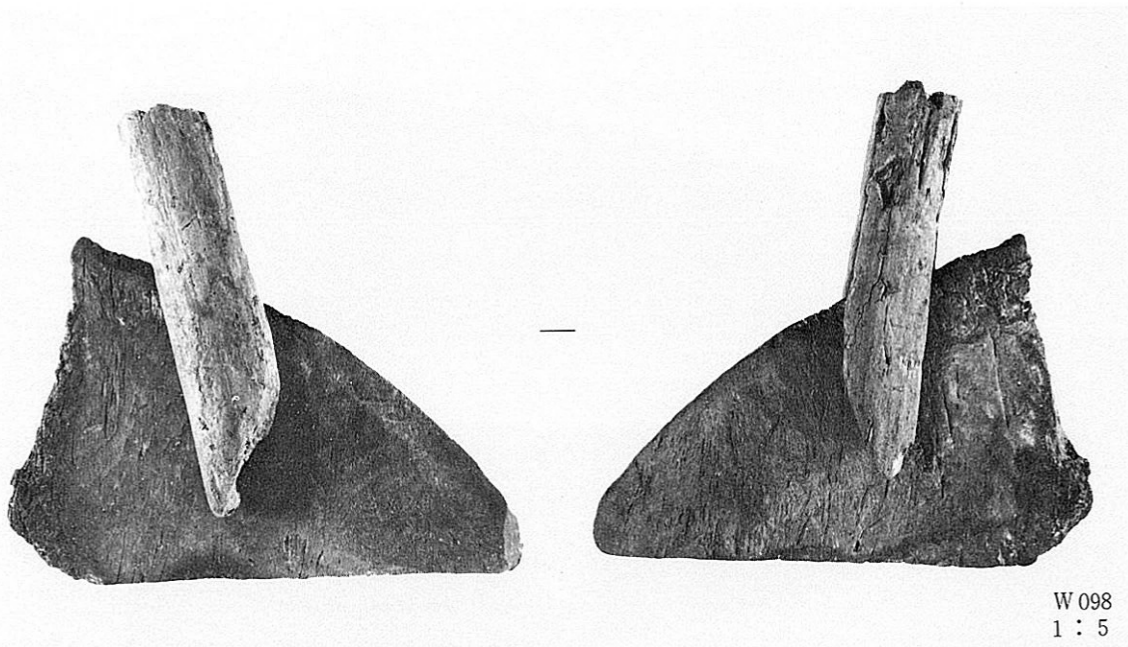


W094
1 : 4

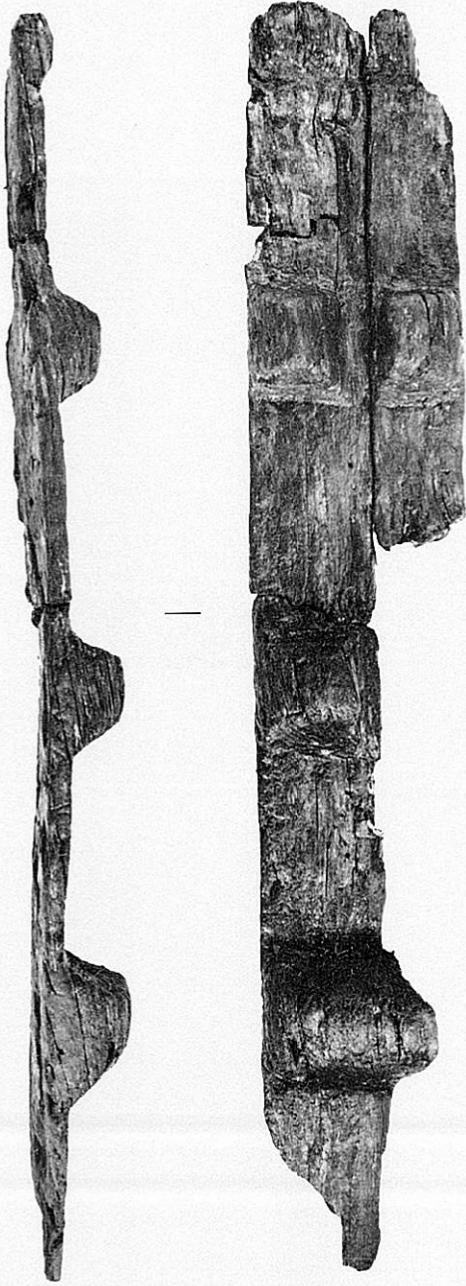


W097
1 : 4

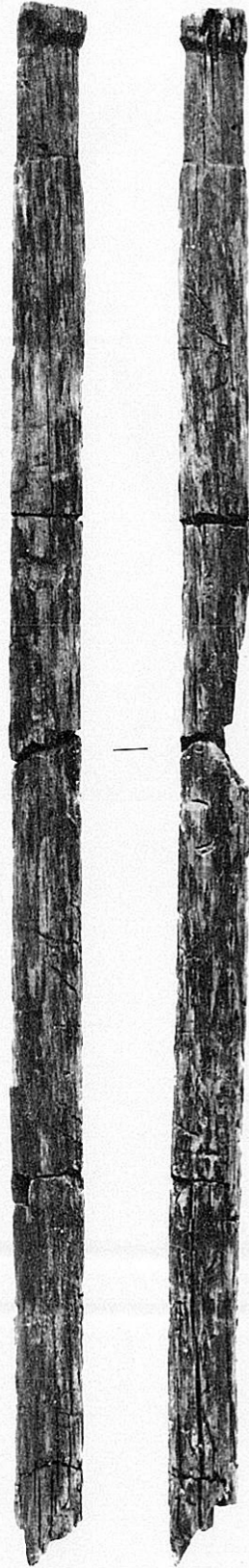




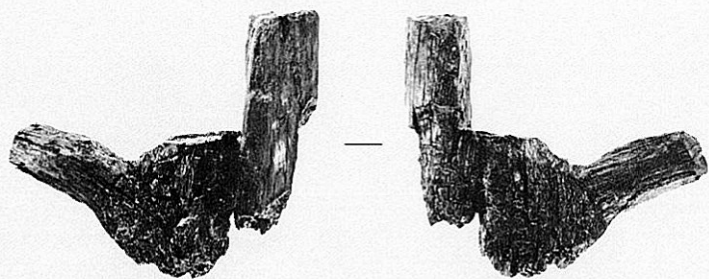
W080 小板状木製品 W098用途不明木製品(梶か)



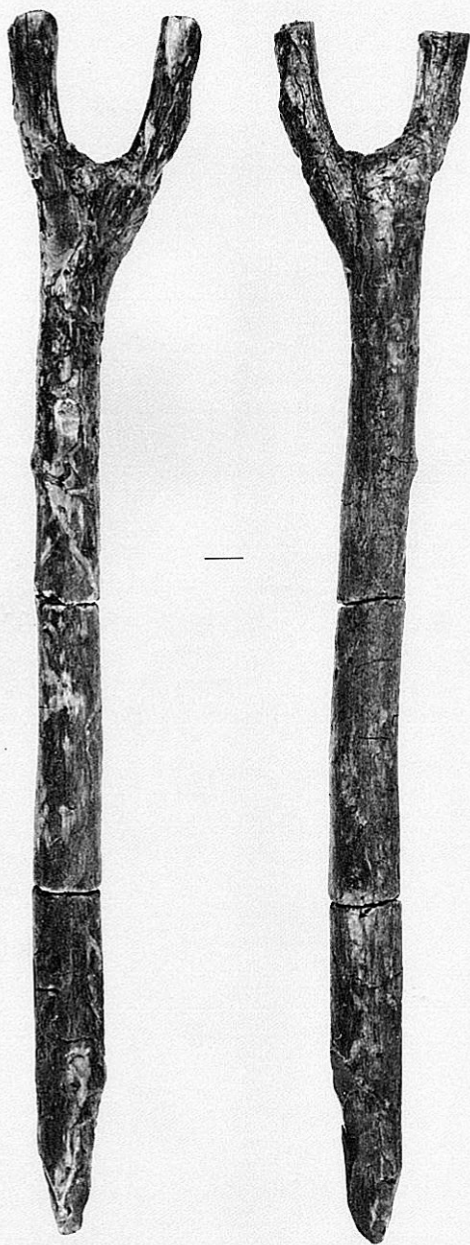
W102
1 : 6



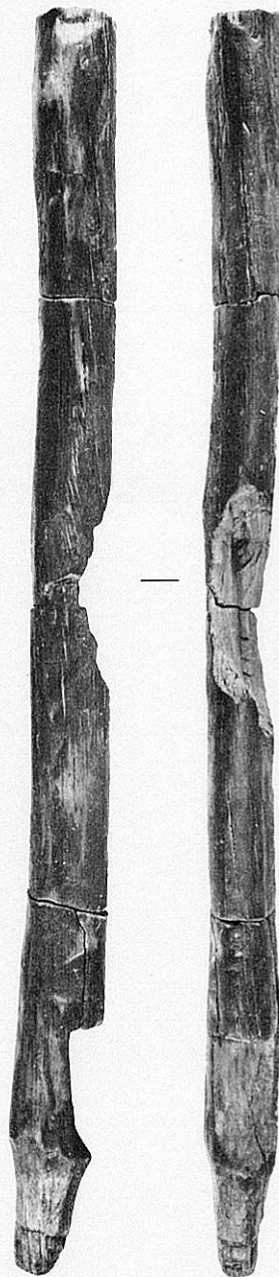
W109
1 : 10



W106
1 : 6



W105
1 : 6



W104
1 : 6



W103
1 : 4



W110
1 : 4



W111
1 : 4



W112
1 : 6



W113
1 : 6



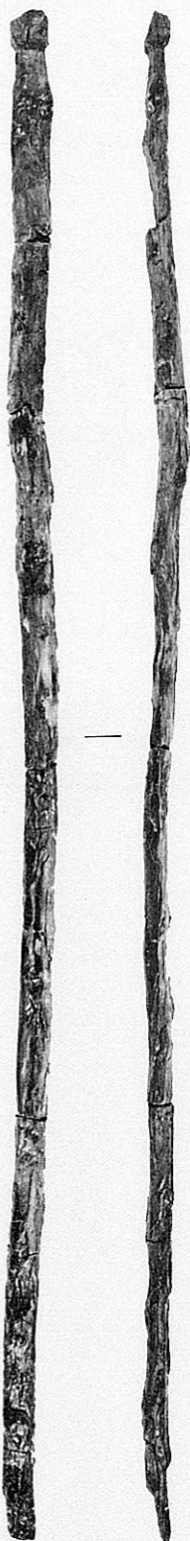
W114
1 : 6



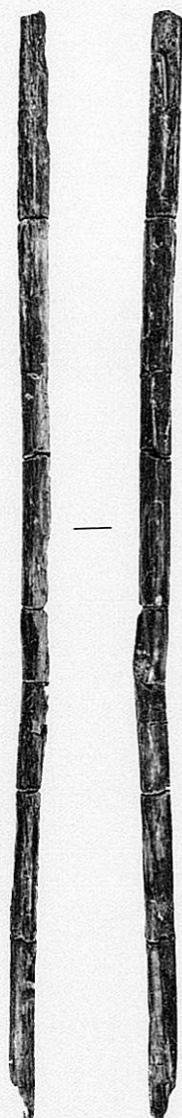
W115
1 : 8



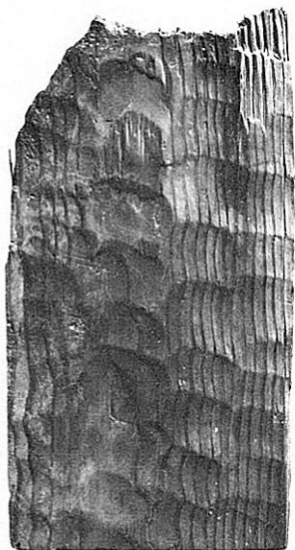
W116
1 : 8



W117
1 : 8



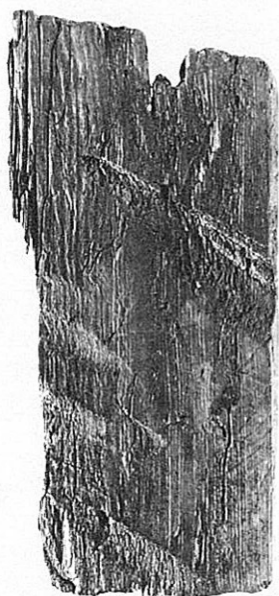
W118
1 : 8



W120
1 : 6



W120

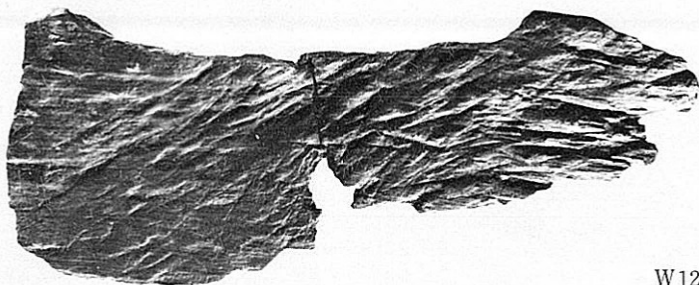


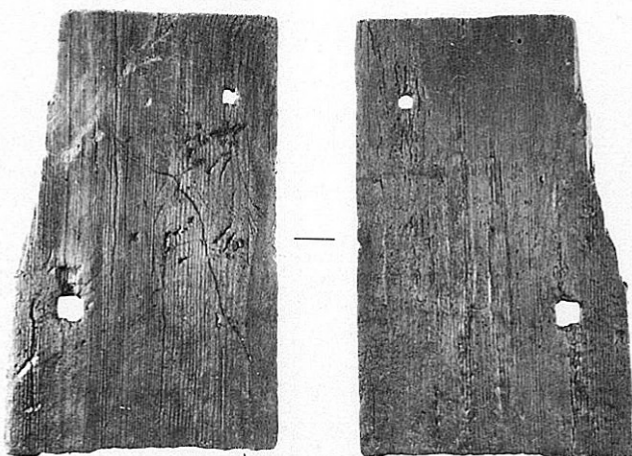
W121
1 : 6



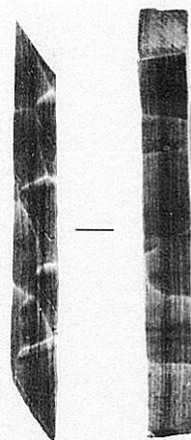
W124
1 : 4

W122
1 : 4





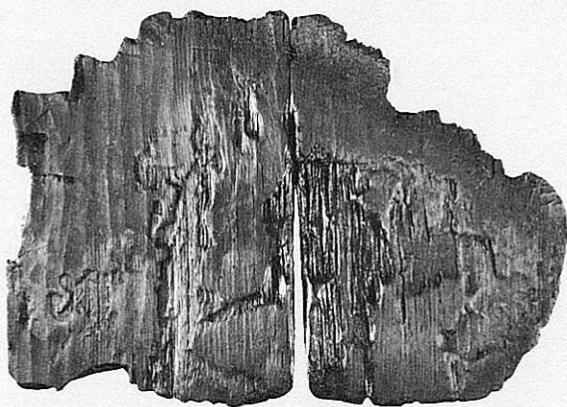
W125
1 : 5



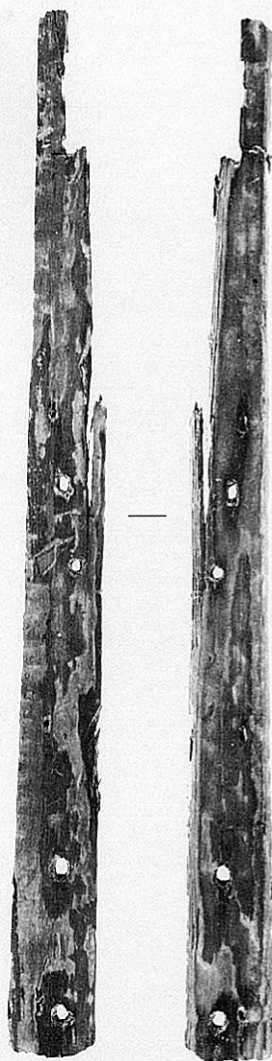
W127
1 : 3



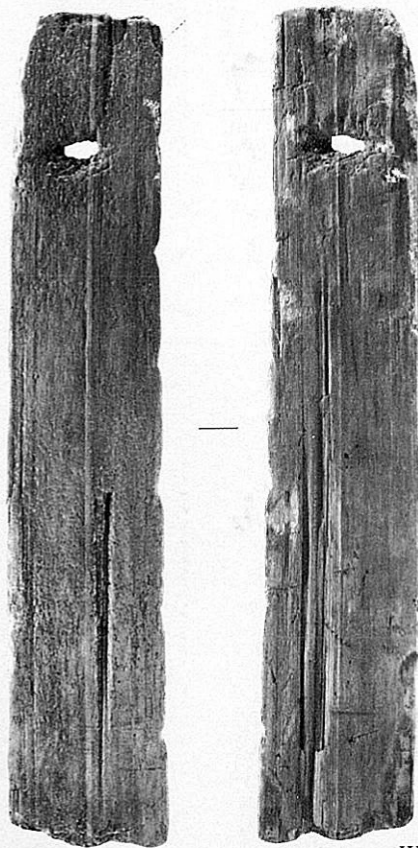
W123
1 : 5



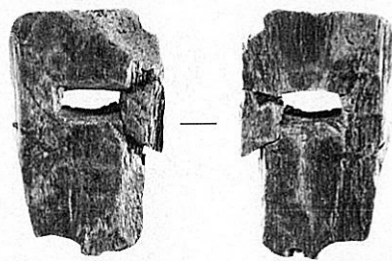
W126
1 : 4



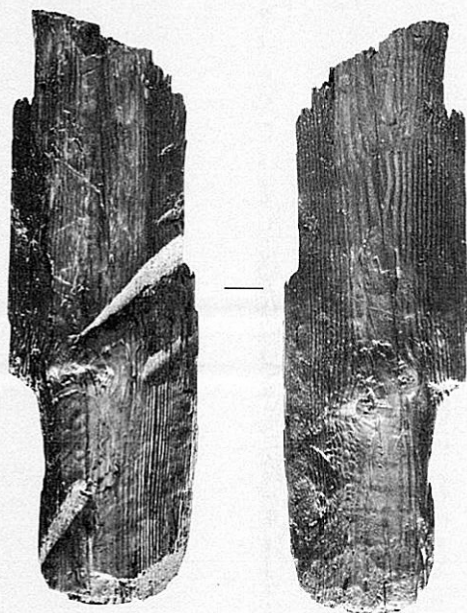
W128
1 : 6



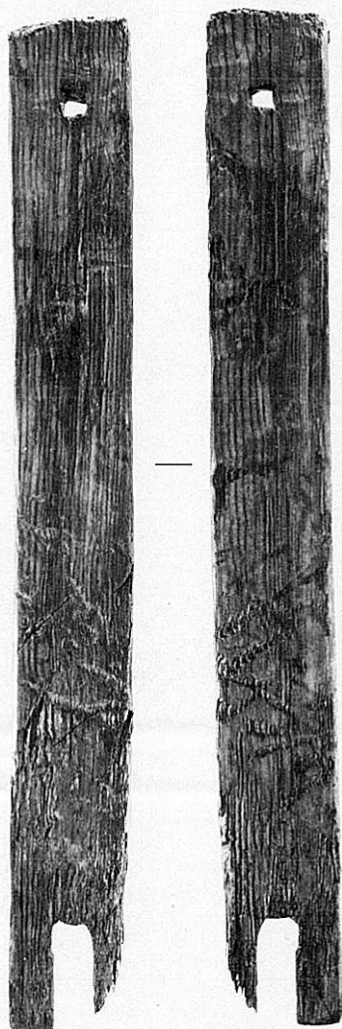
W129
1 : 6



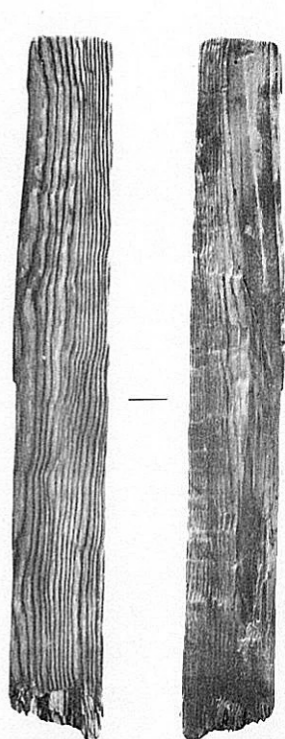
W130
1 : 6



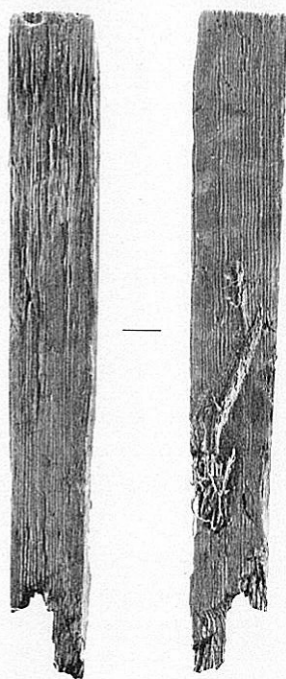
W132
1 : 6



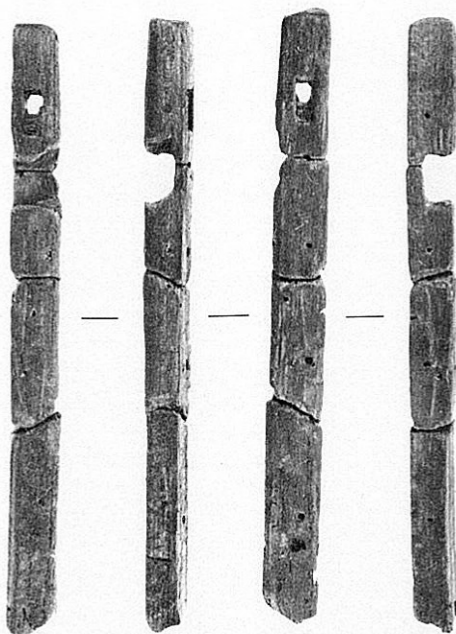
W131
1 : 6



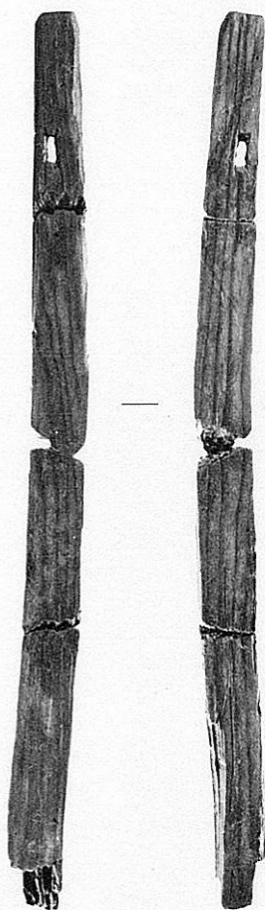
W133
1 : 6



W134
1 : 6



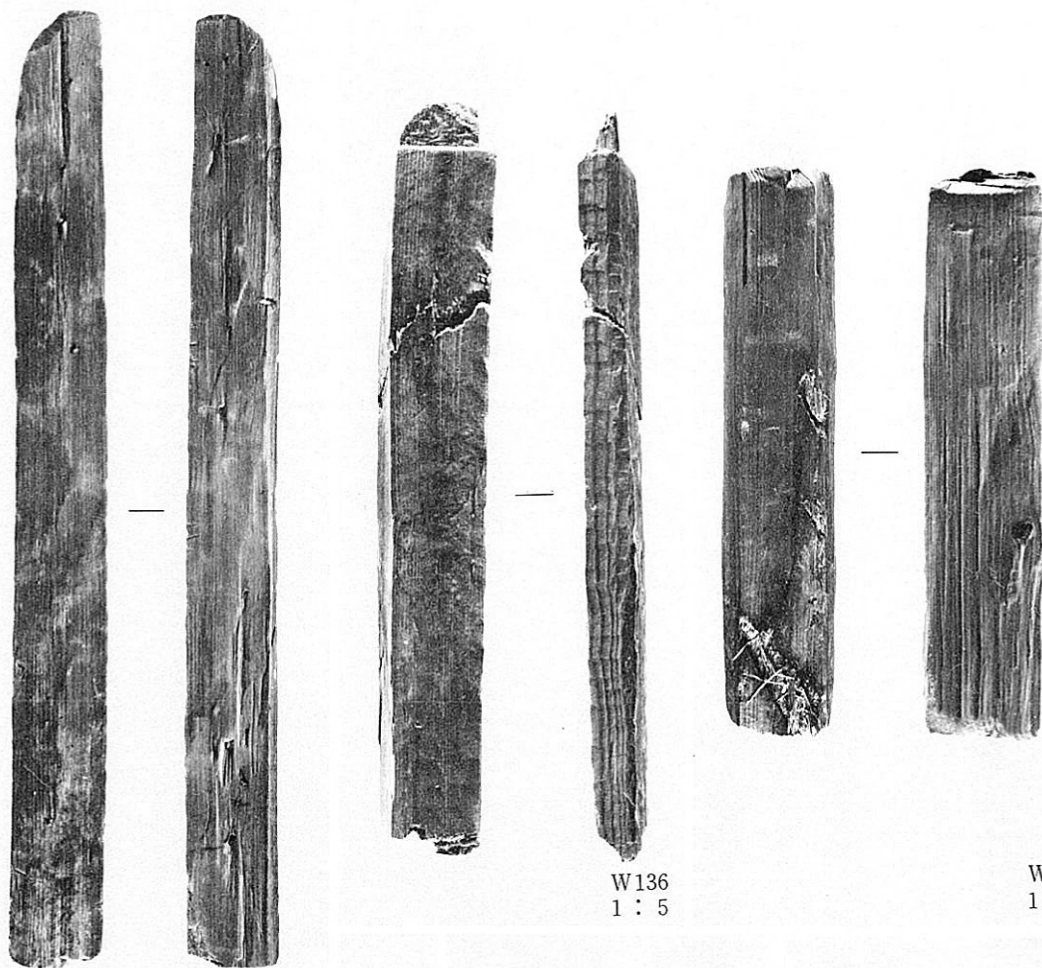
W107
1 : 4



W108
1 : 6



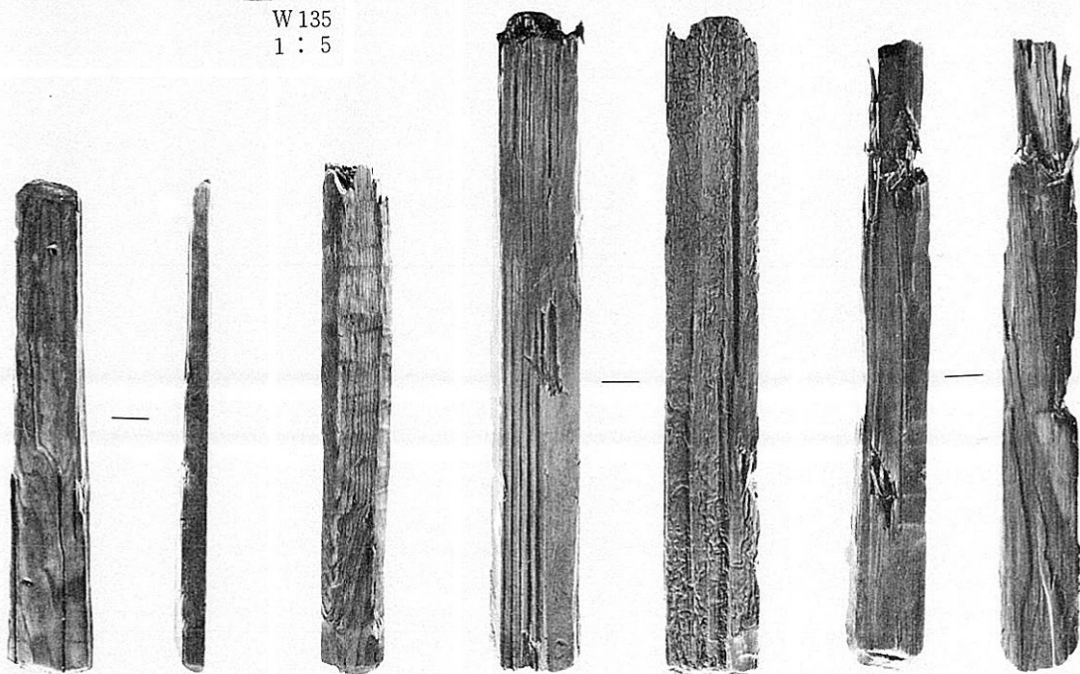
W107



W135
1 : 5

W136
1 : 5

W137
1 : 5



W138
1 : 5

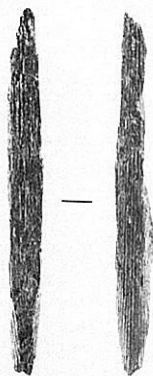
W139
1 : 5

W140
1 : 5

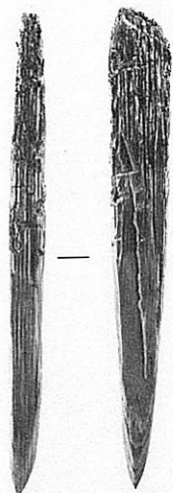
W141
1 : 5



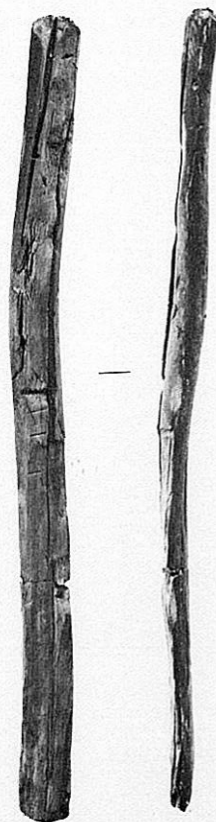
W146



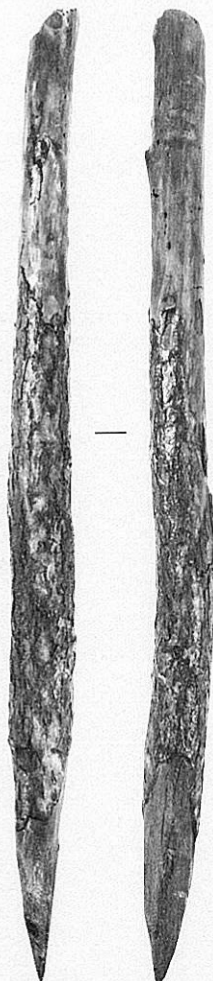
W152
1 : 6



W153
1 : 6



W151

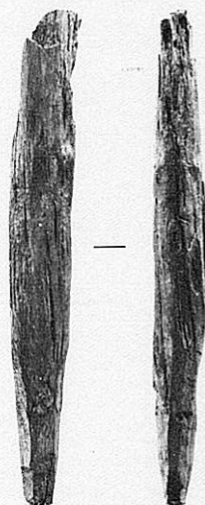


W147



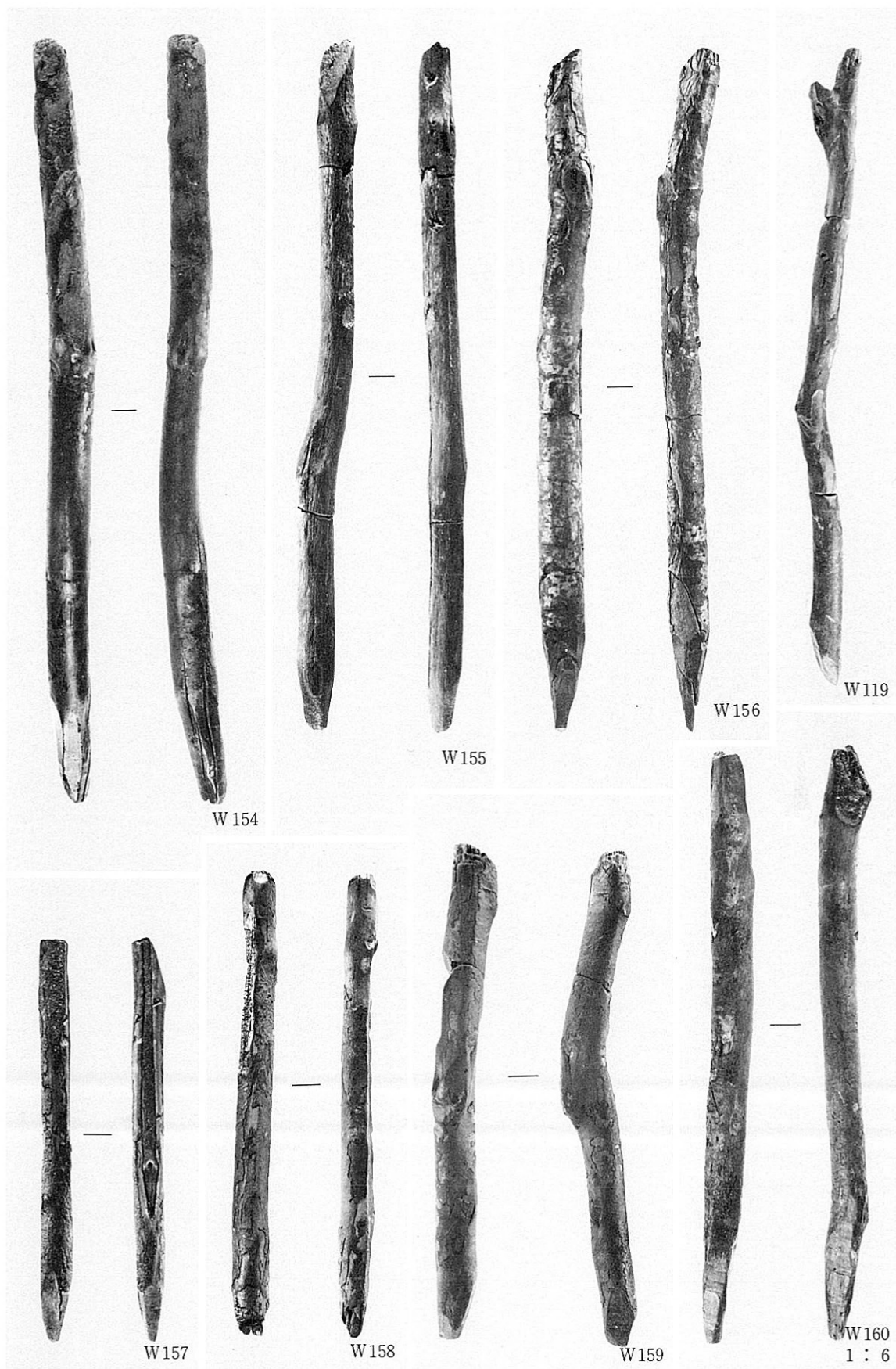
W148

W149

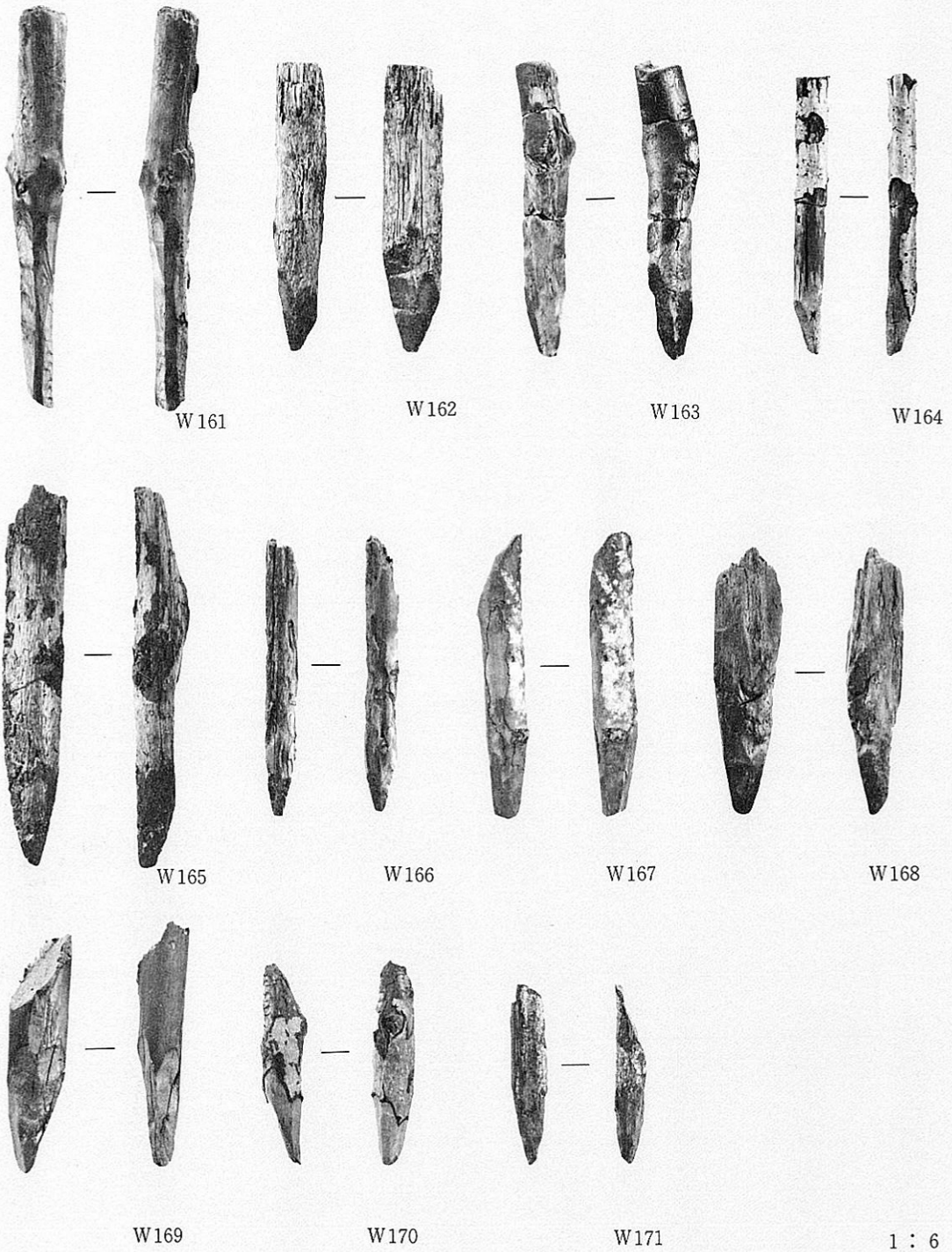


W150

1 : 8



W119 又杭 W154~160 杭



W161~171 杭



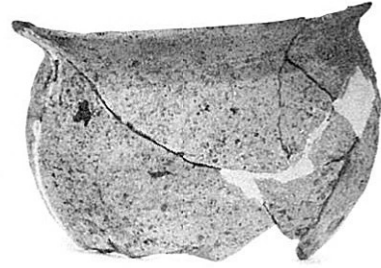
10



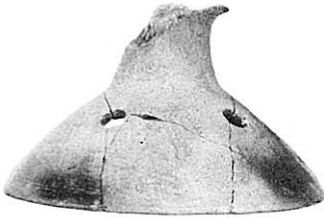
15



59



31



17



29



13



14



34



16



22



66



69



67



68



70



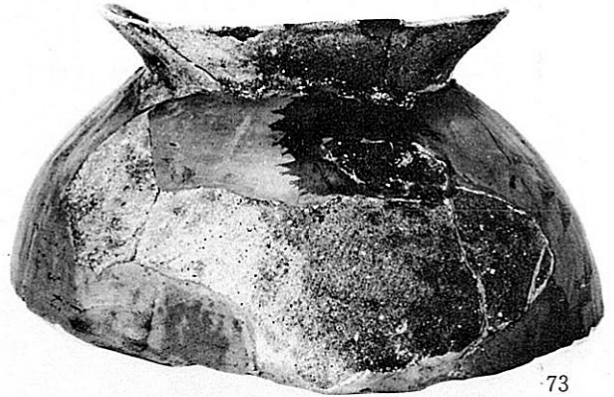
77



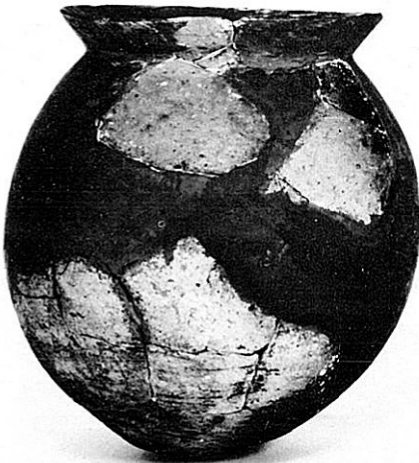
72



76



73



75



103



86



91



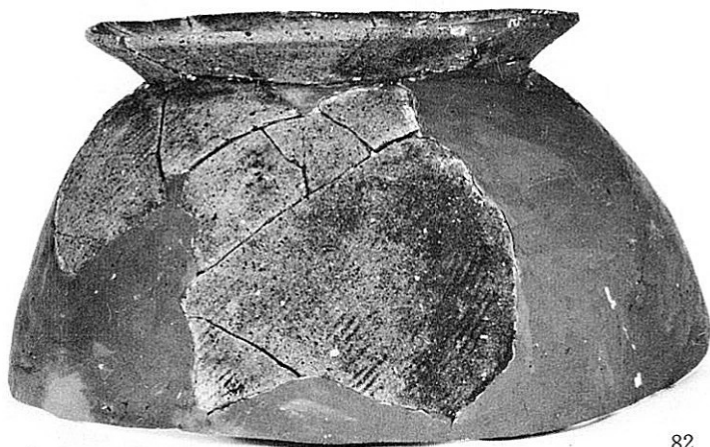
87



92



79



82



83



13



90



89



93



889



99



101



111



110



108



112



113



118



116



150



143



167



168



170



164



182



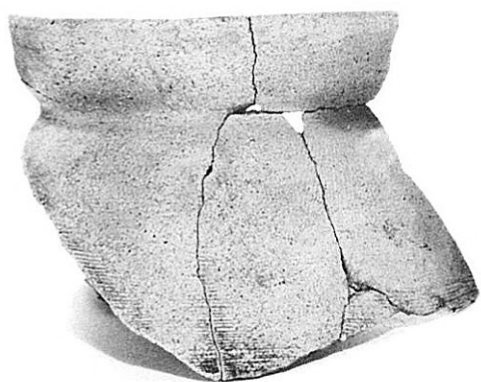
176



216



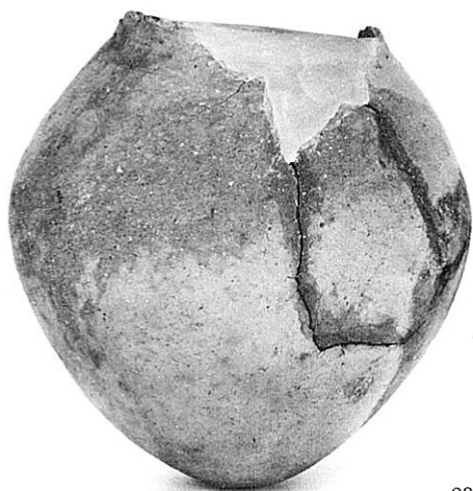
218



217



223



231



243



237



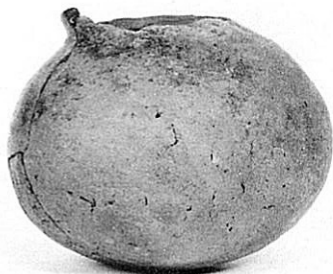
236



270



246



247



160



252



251



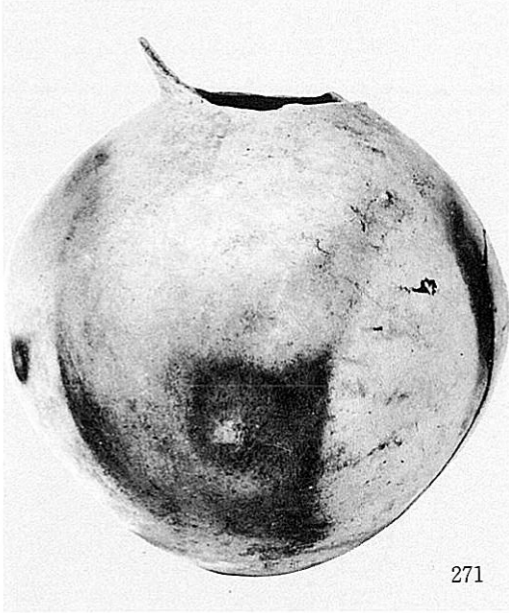
263



264



265



271



245



284



285



275



286



279



290



302



303



889



307



300



312



311



316



313



321



330



329



325



324



355



361



T-8



T-11



T-14



T-16



T-13



T-10



T-7



T-6



T-9



T-12



T-15



398



396



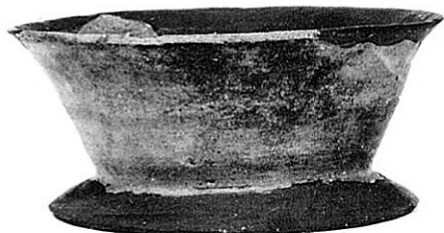
T-17



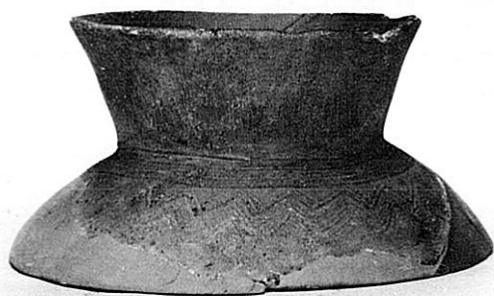
404



368



387



382



410



412

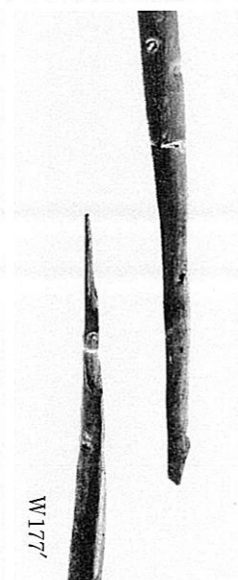
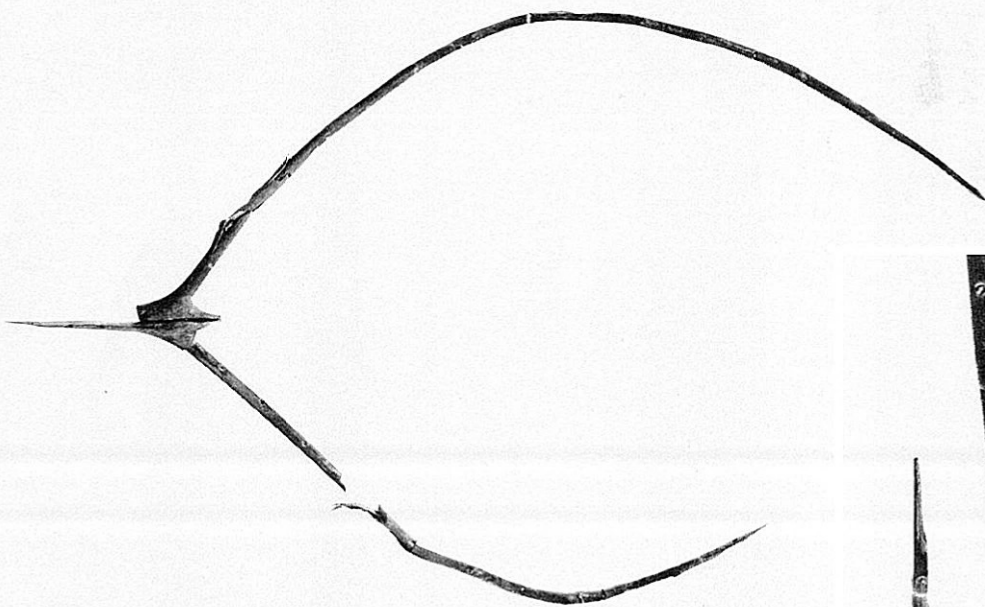
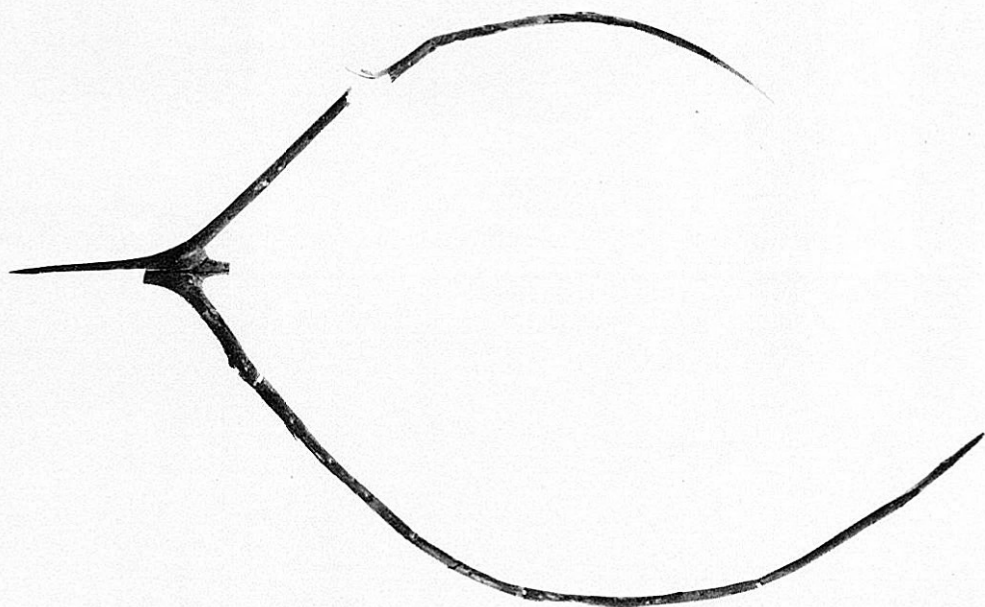


407



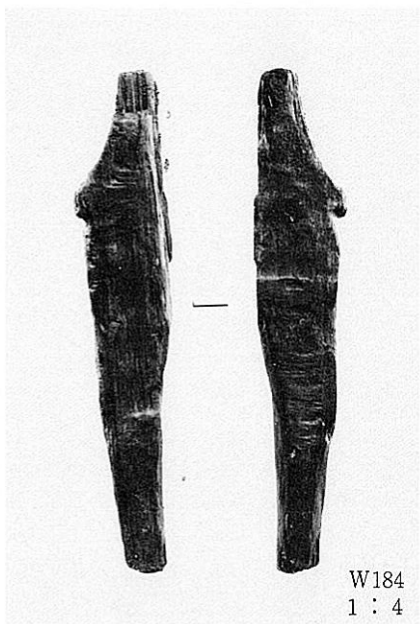
408



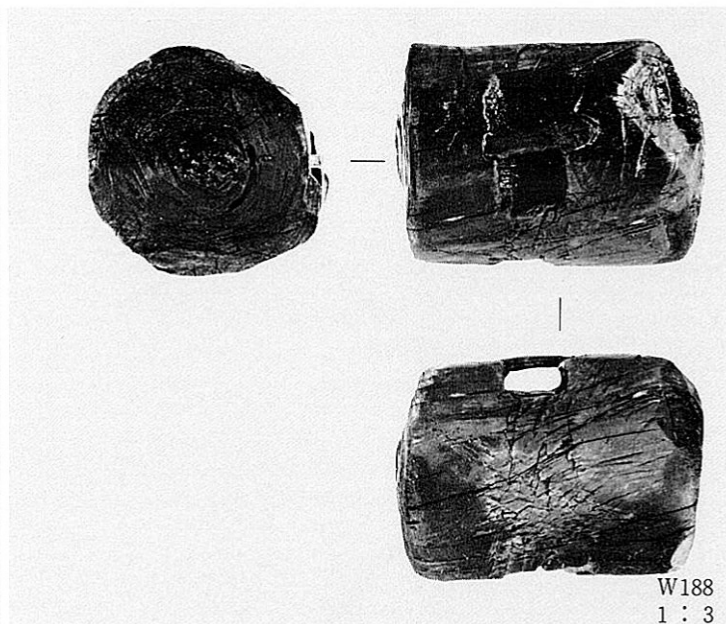


W177
1 : 6

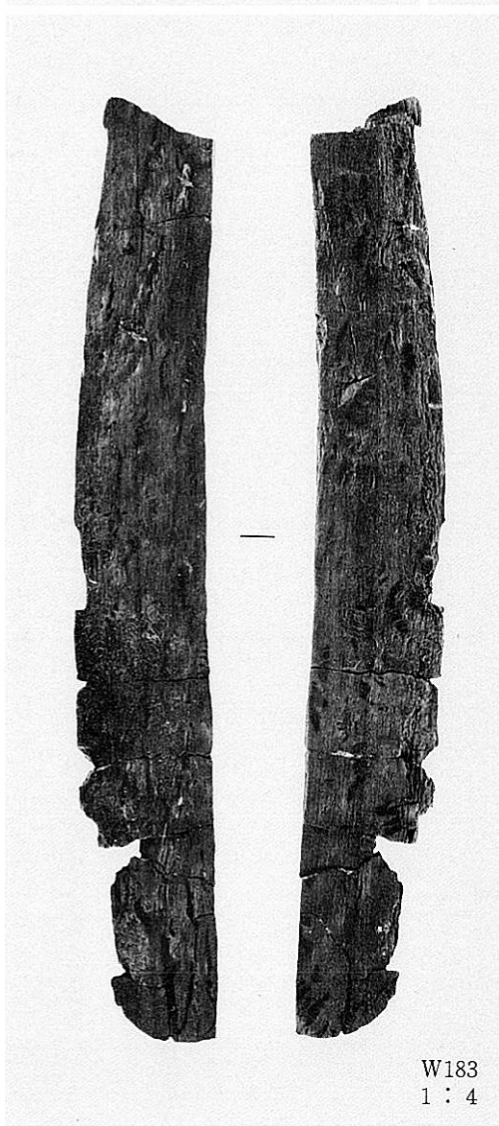
W177



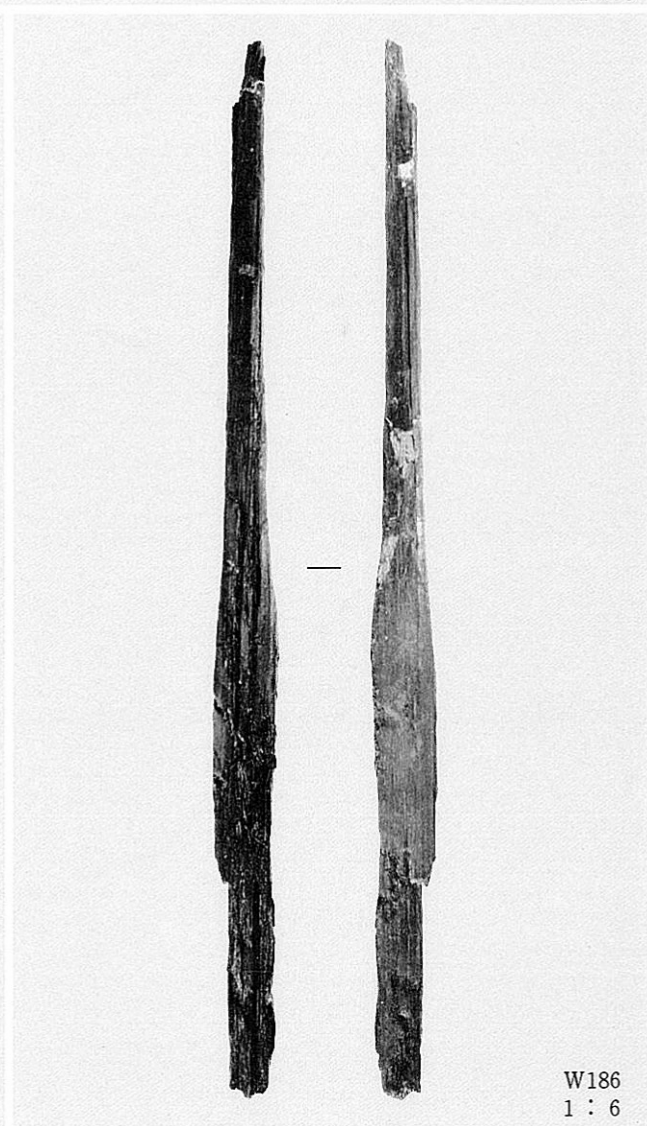
W184
1 : 4



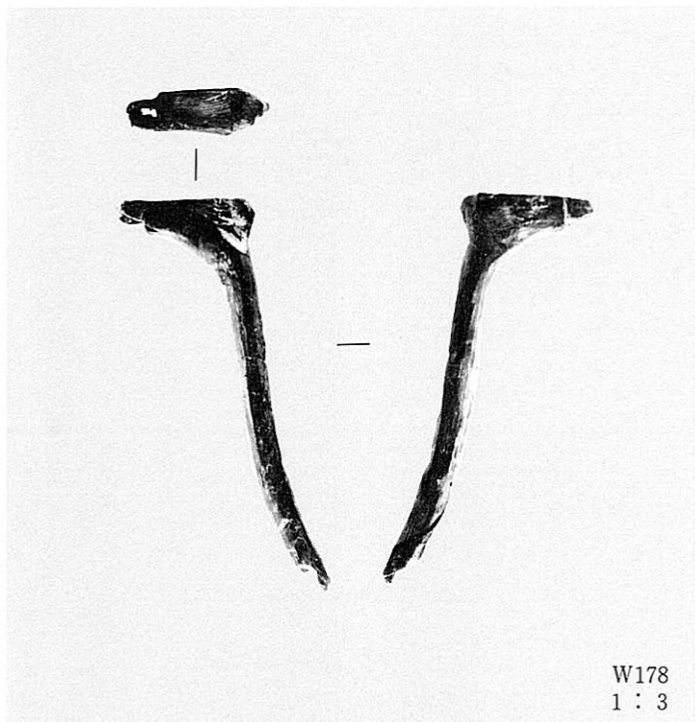
W188
1 : 3



W183
1 : 4



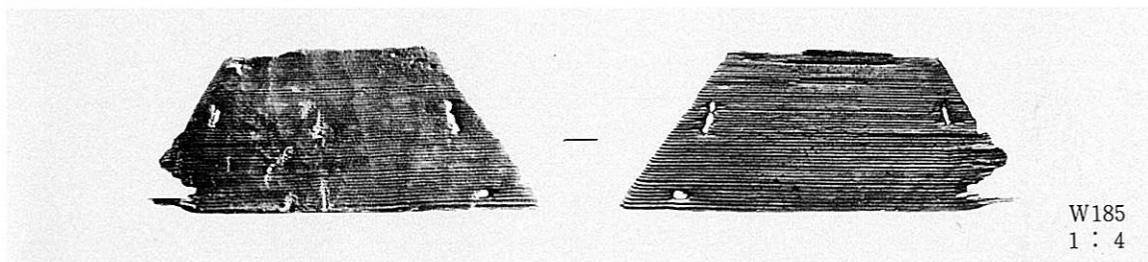
W186
1 : 6



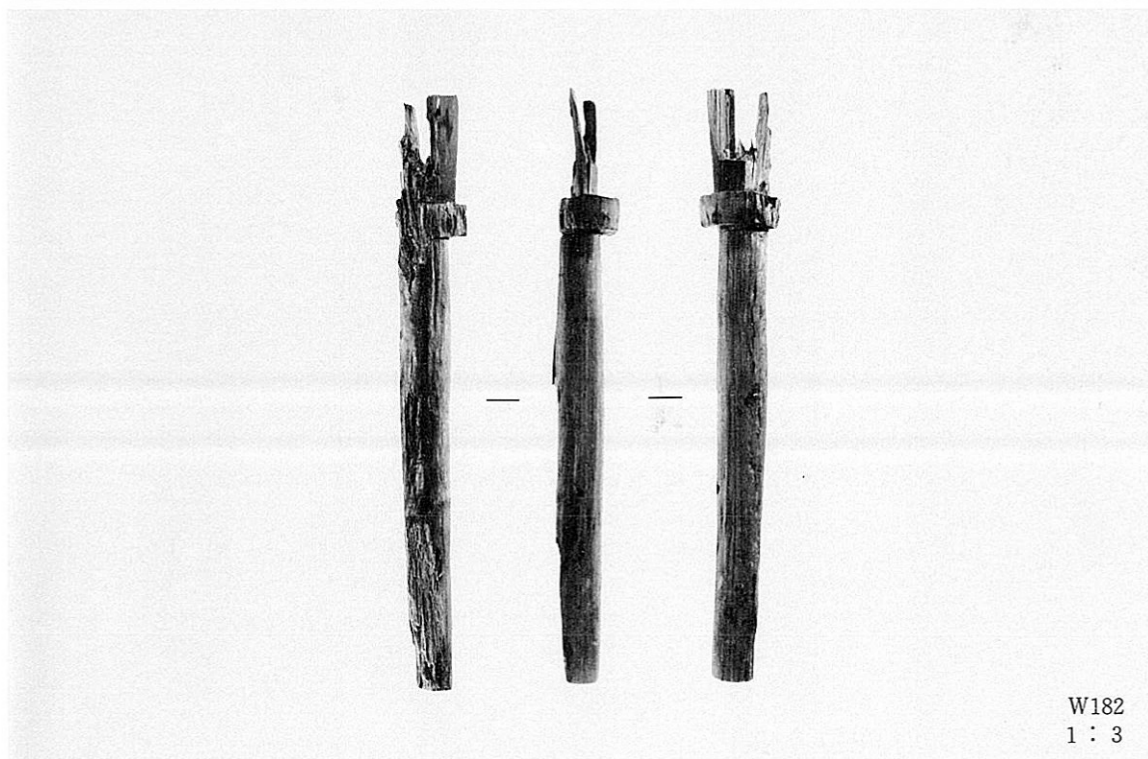
W178
1 : 3



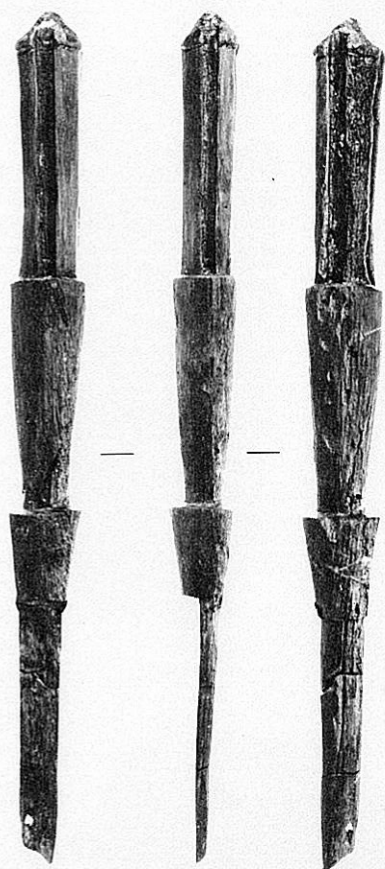
W180
1 : 4



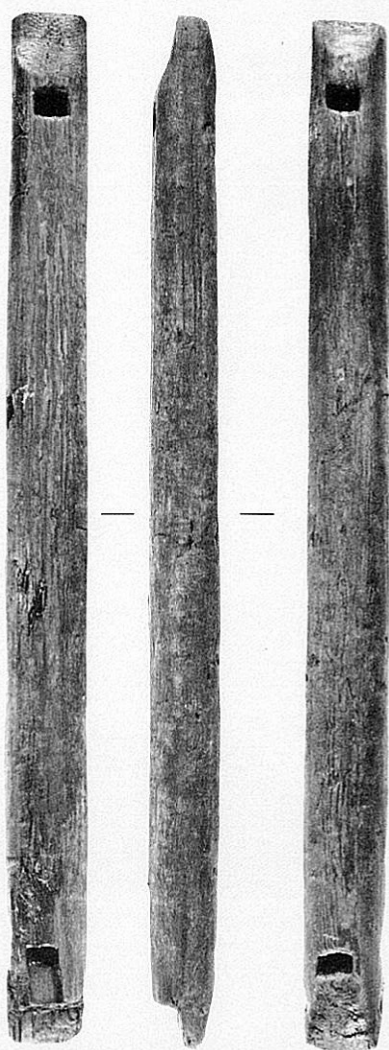
W185
1 : 4



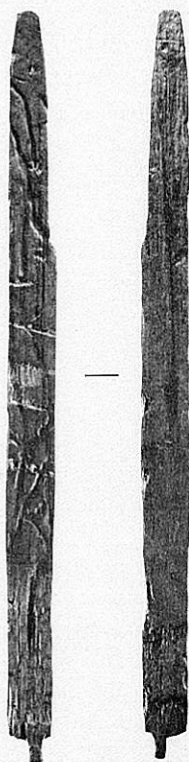
W182
1 : 3



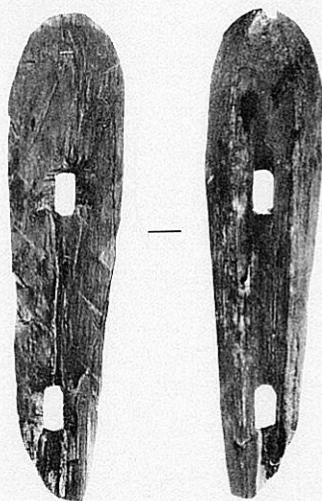
W181
1 : 4



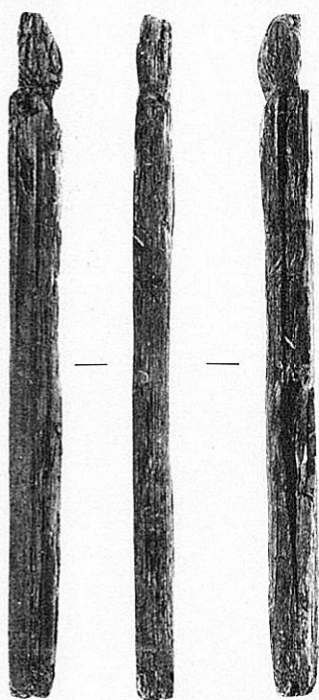
W190
1 : 6



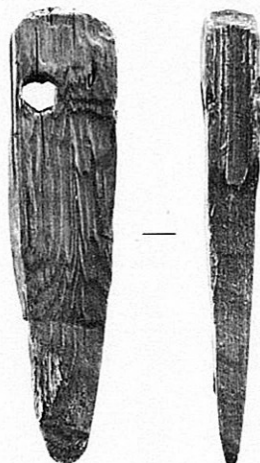
W189
1 : 6



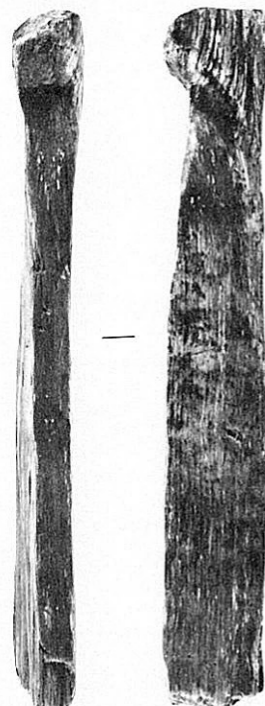
W179
1 : 3



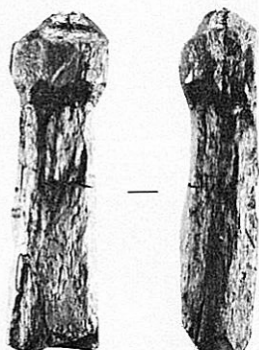
W192
1 : 4



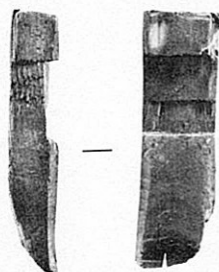
W194
1 : 3



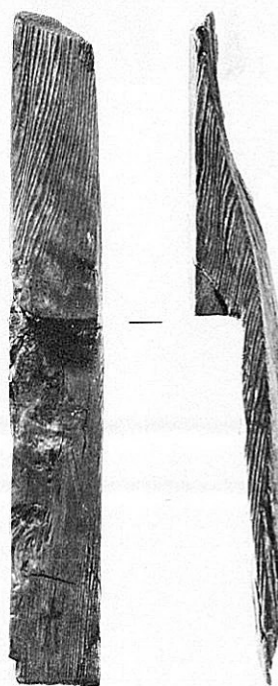
W196
1 : 4



W193
1 : 4

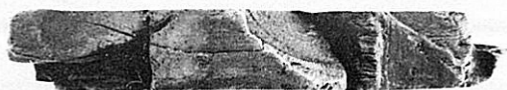


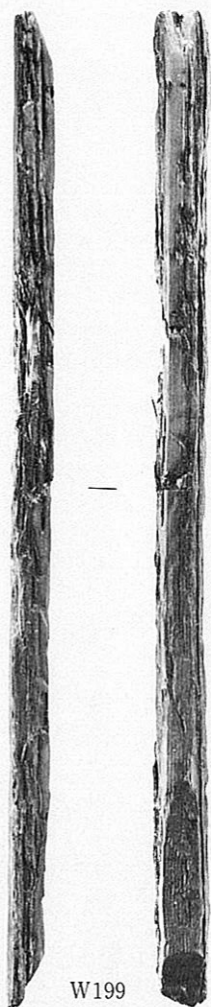
W195
1 : 3



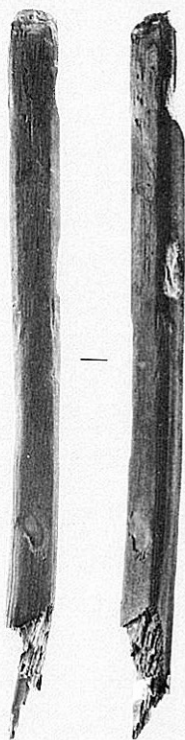
W197
1 : 3

W198
1 : 4





W199
1 : 4



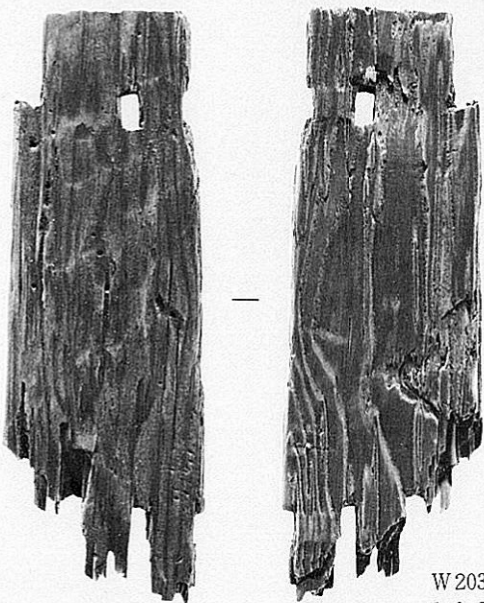
W200
1 : 3



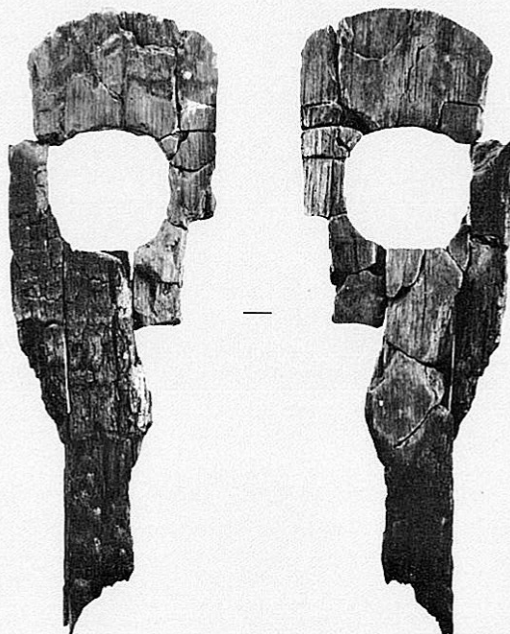
W201
1 : 2



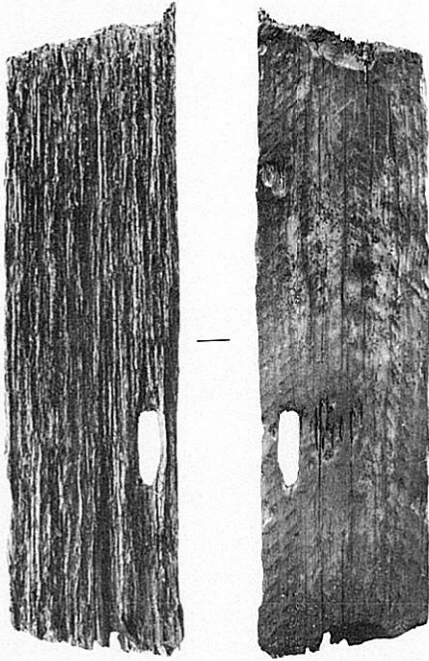
W202
1 : 2



W203
1 : 3



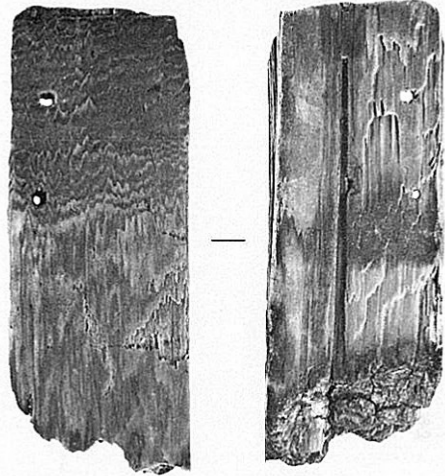
W204
1 : 4



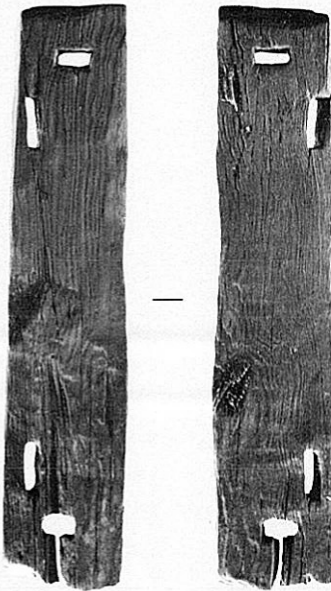
W205
1 : 6



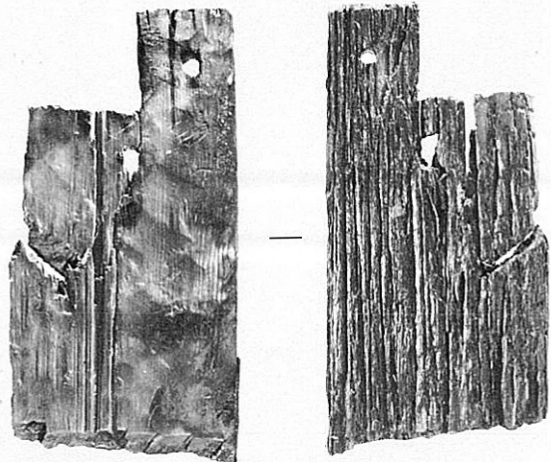
W205'



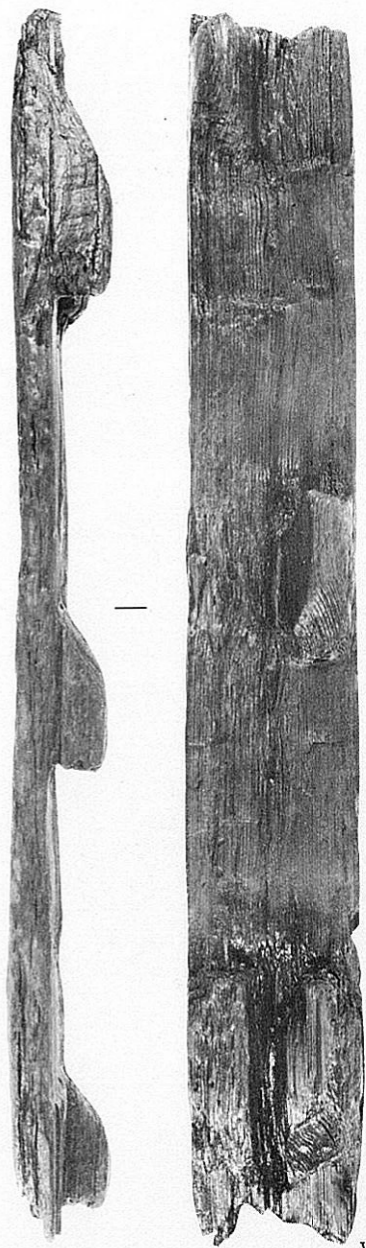
W206
1 : 3



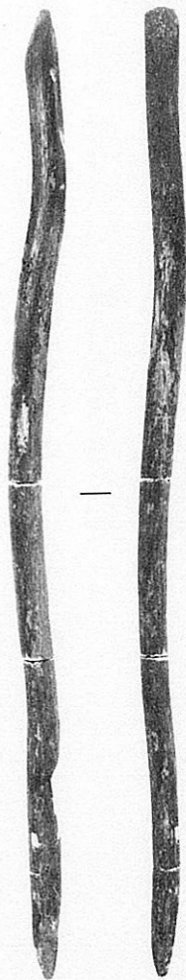
W191
1 : 6



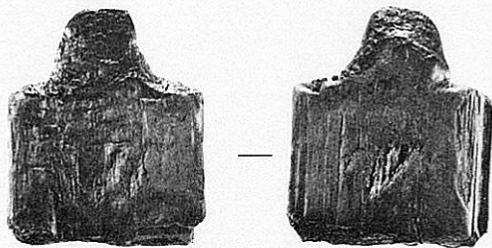
W207
1 : 6



W187
1 : 6



W209
1 : 8



W208
1 : 4



W210
1 : 8



413



422



419



418



425



423



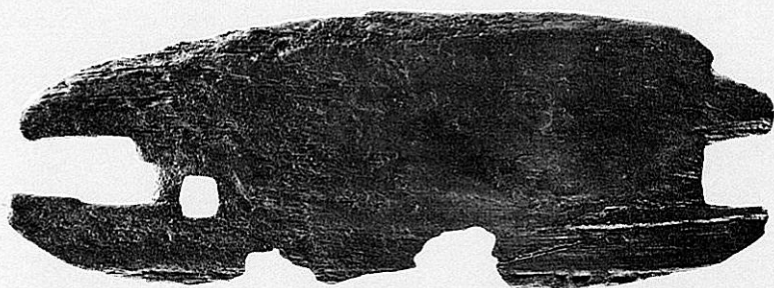
426



427



421



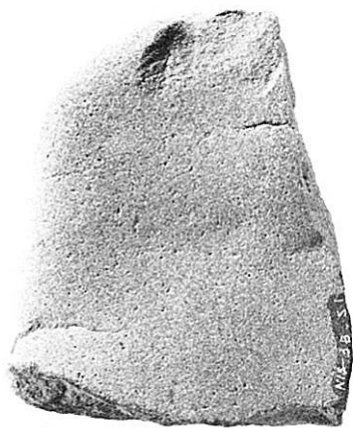
W211
1 : 5



430



453



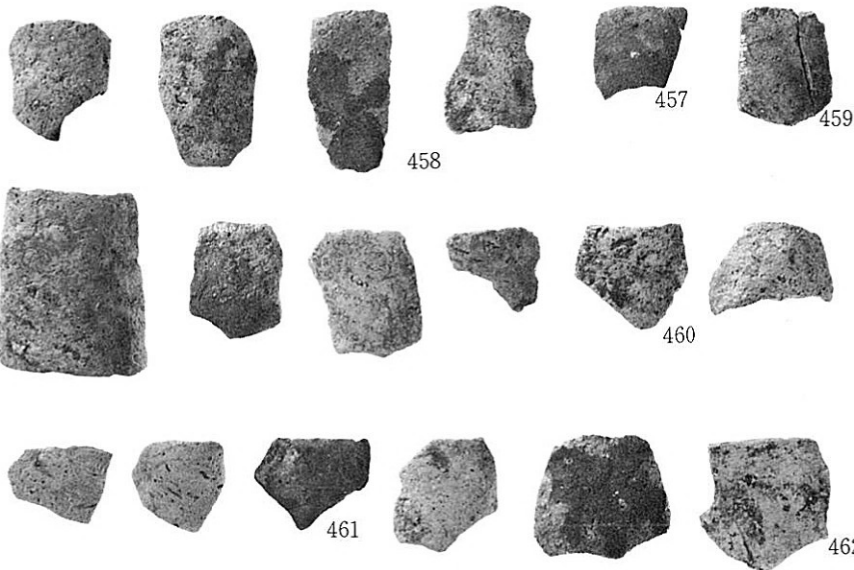
S-2



456



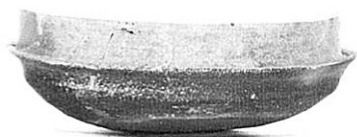
455



Bトレンチ溝1 (430)

土塚1 (453・455・456、石S-2)

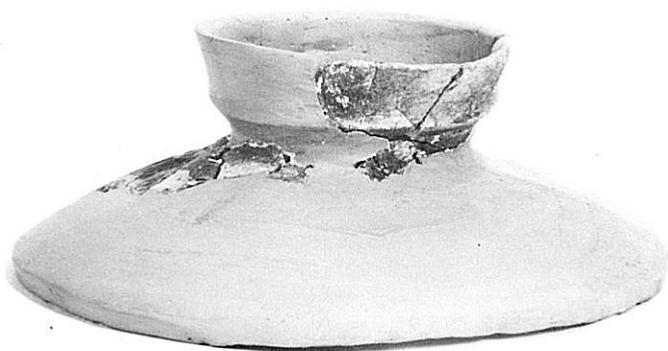
Bトレンチ土塚6 (下段)



463



466

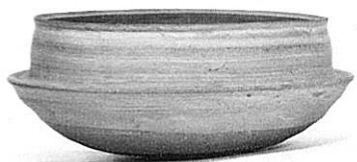


475

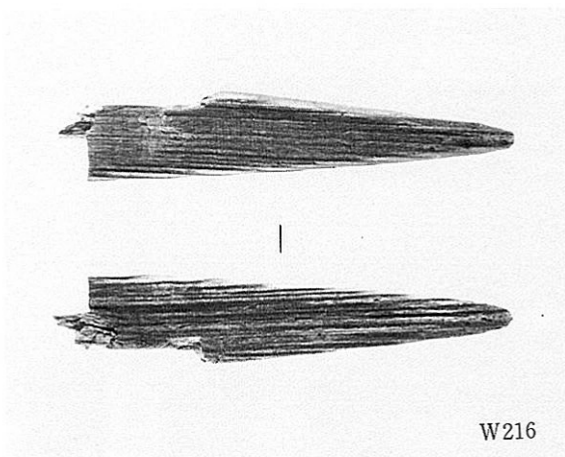
468



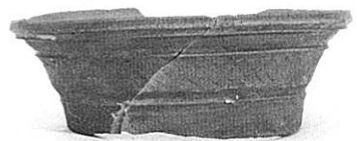
S-1



441



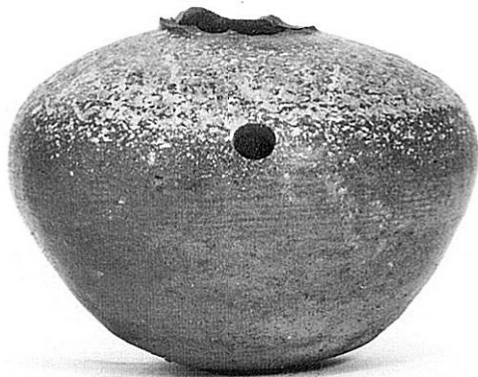
W216



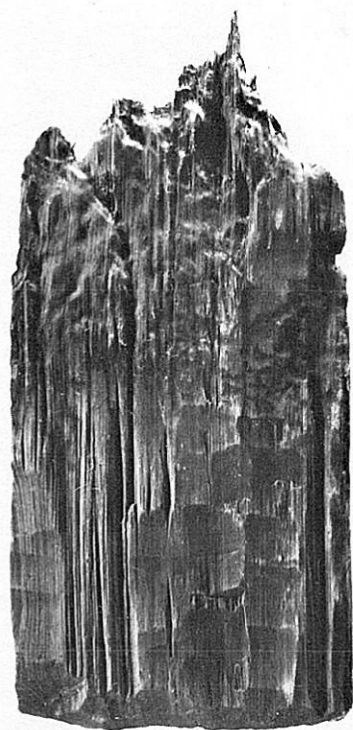
447



445



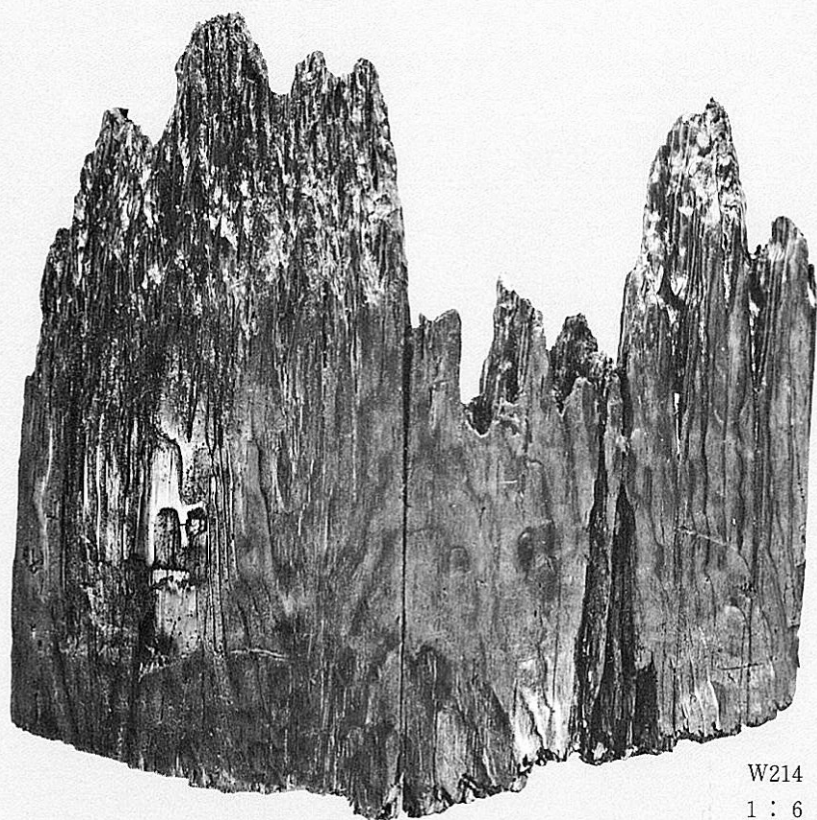
444



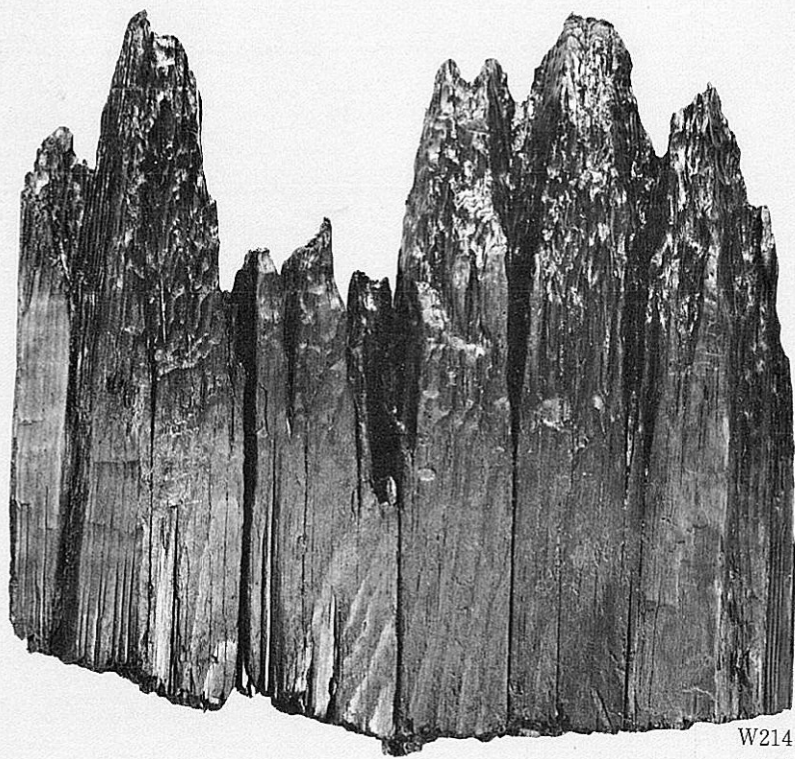
W212
1 : 6



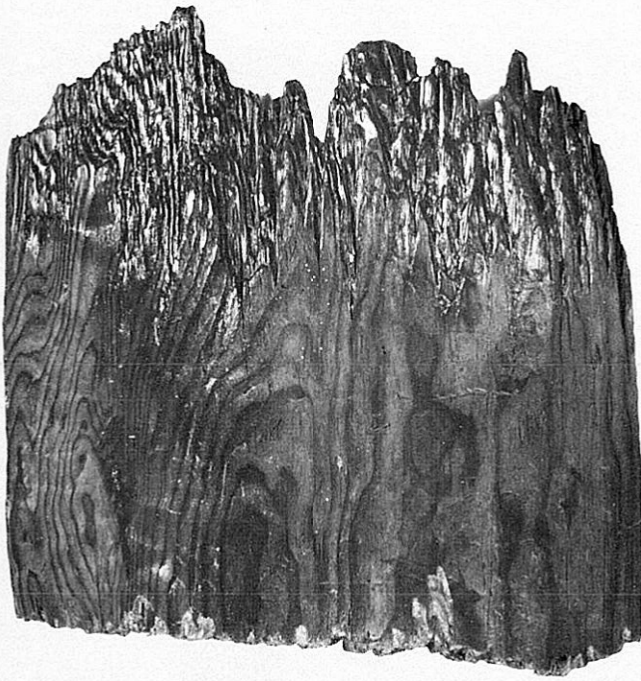
W213
1 : 6



W214
1 : 6



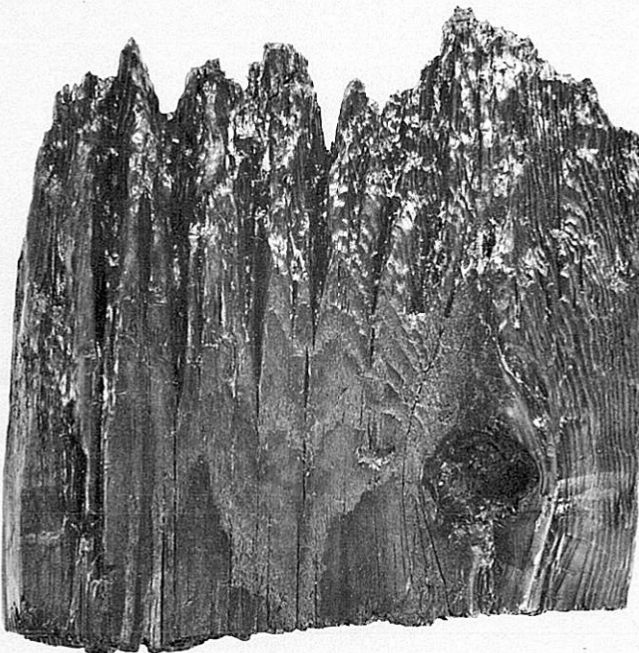
W214
1 : 6



891



507



W215
1 : 6



505



506



723



554



514



553



510



509



513



670



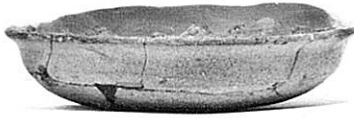
839



837



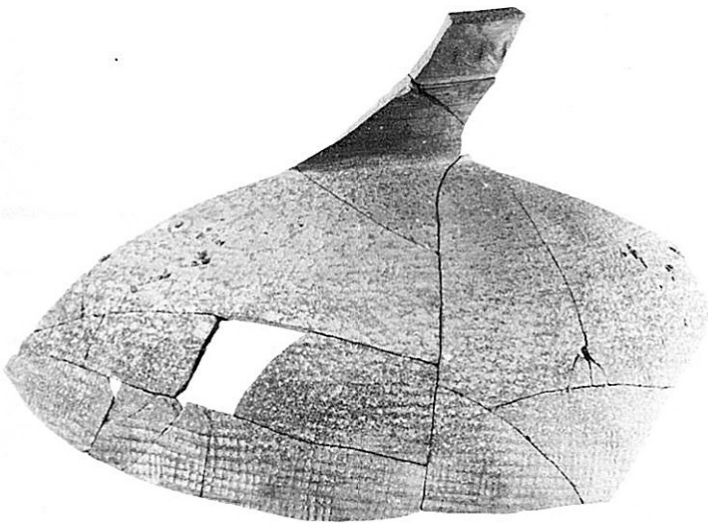
877



835



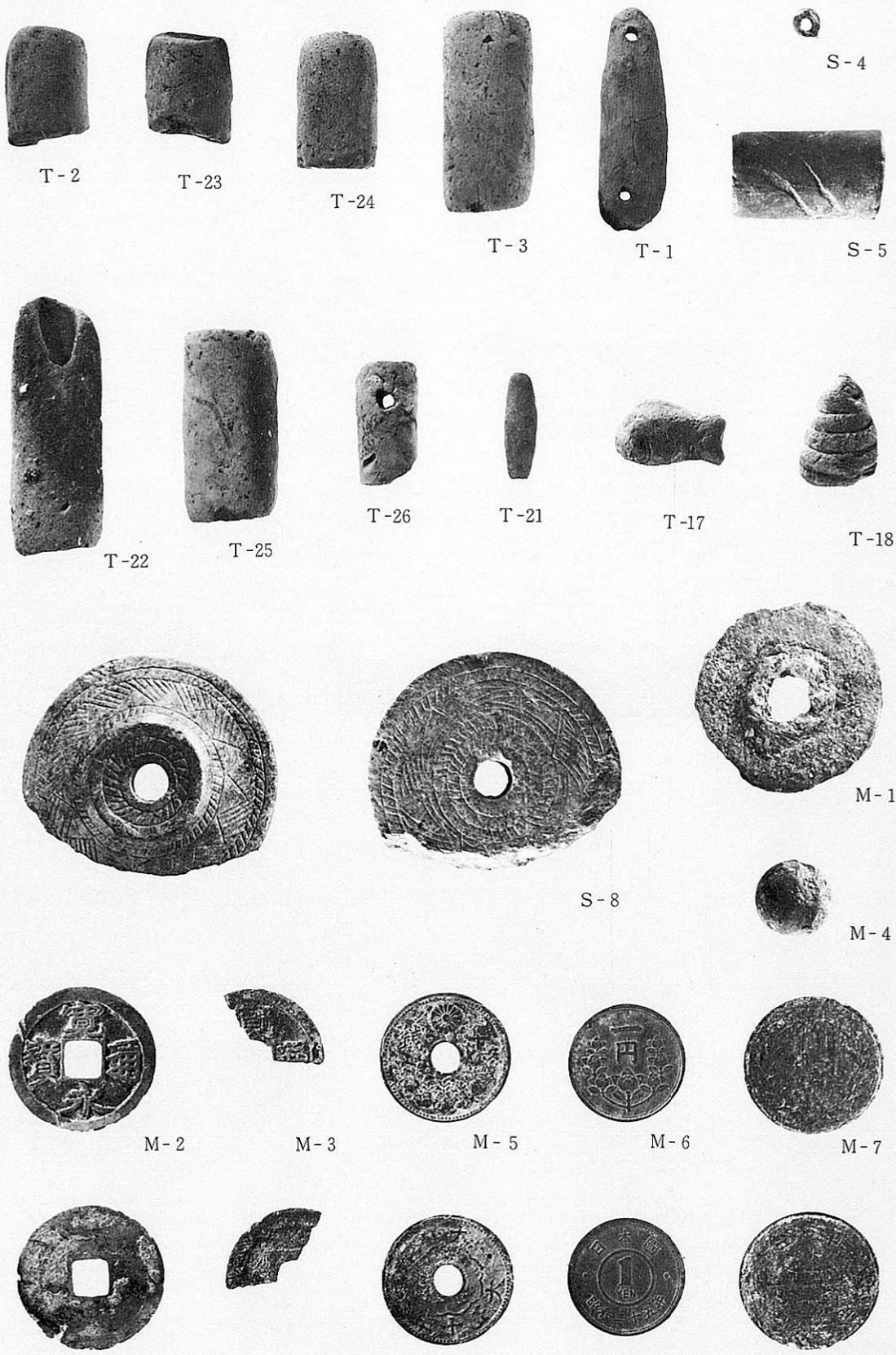
666



665

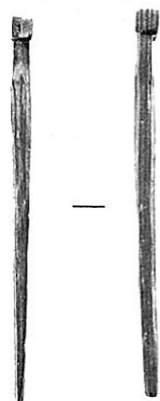


779

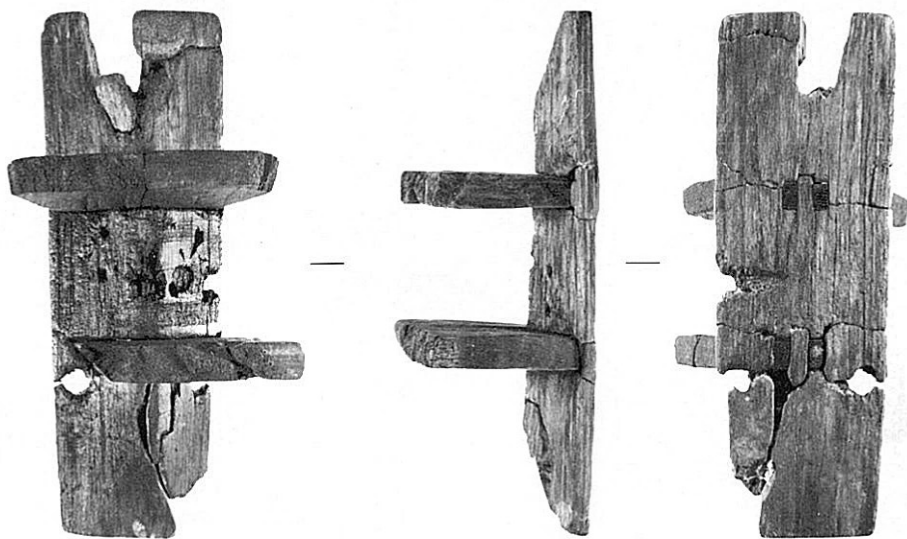




W218
1 : 2



W219
1 : 3



W217
1 : 3

図版一六〇 古墳時代Ⅰ・Ⅱ 遺物調整技法(1)

