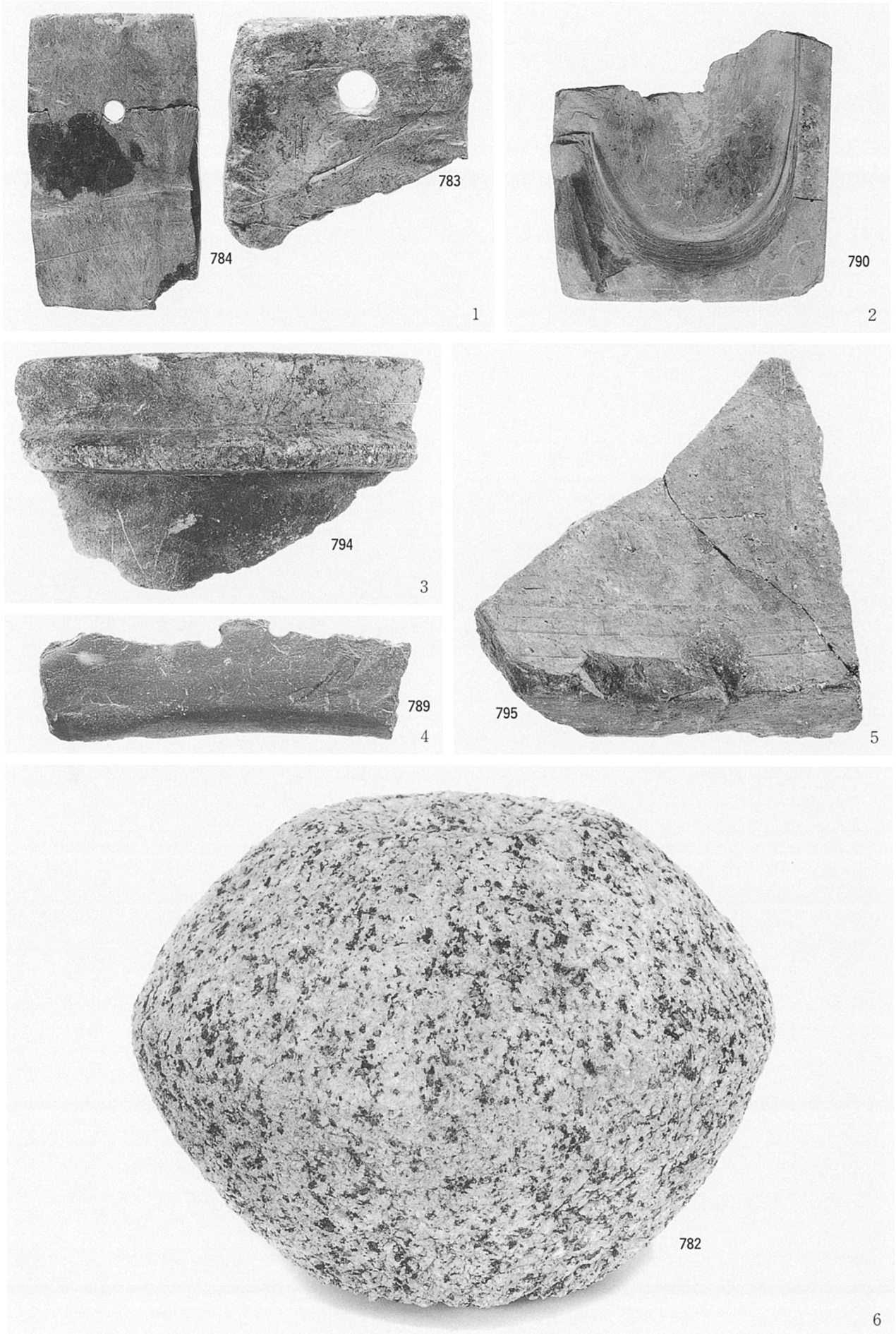
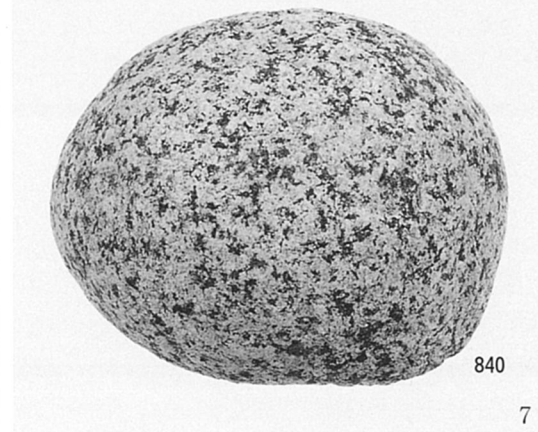
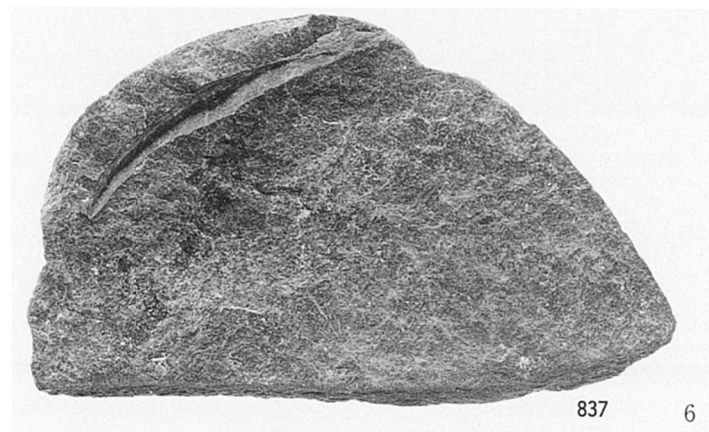
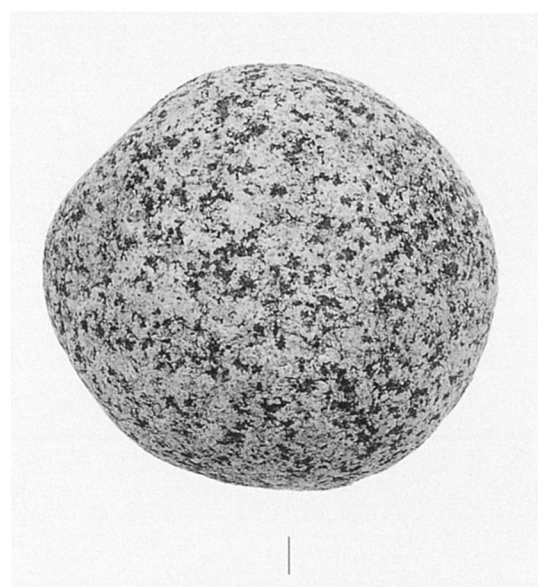
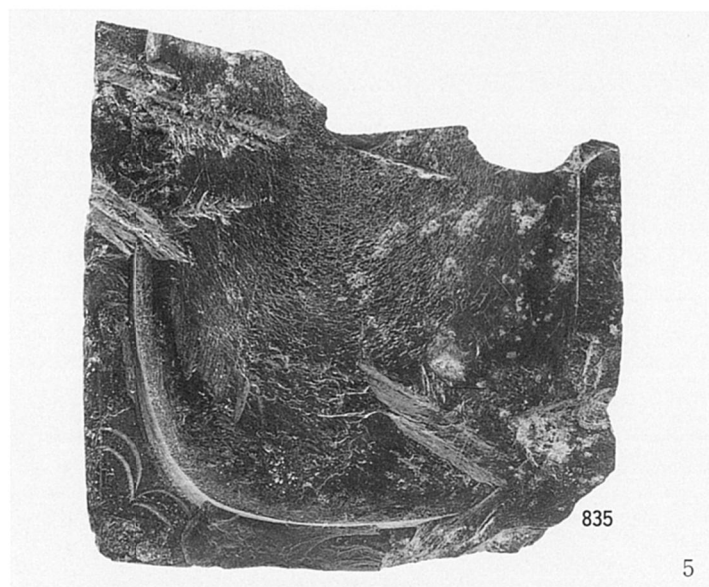
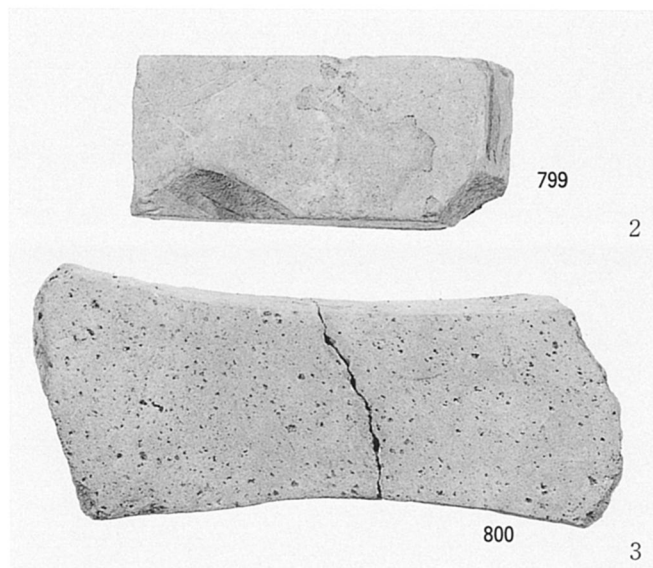


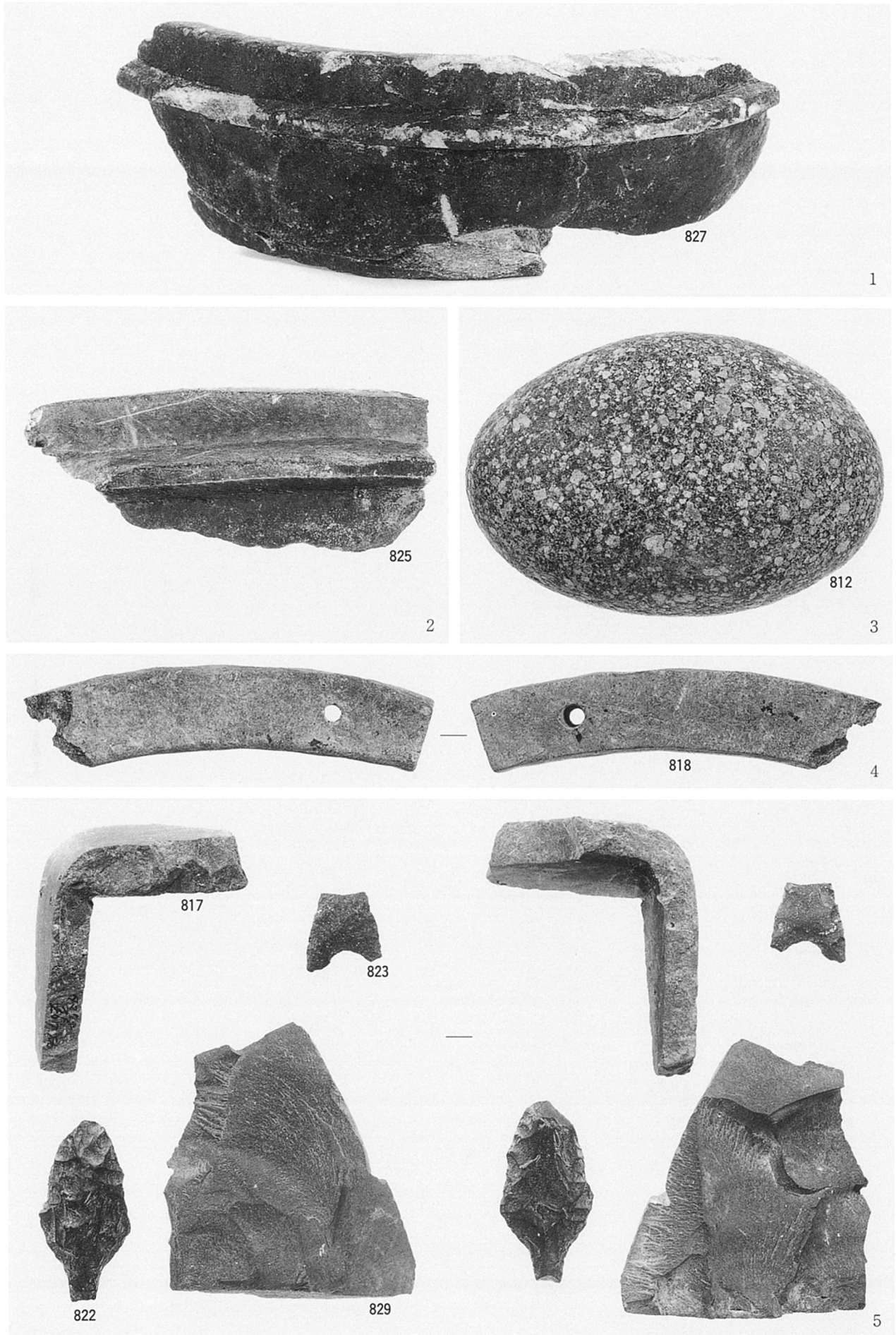
1~4. 土坑643 5. 土坑582 6. pit274 7. 土坑1538 8. pit389



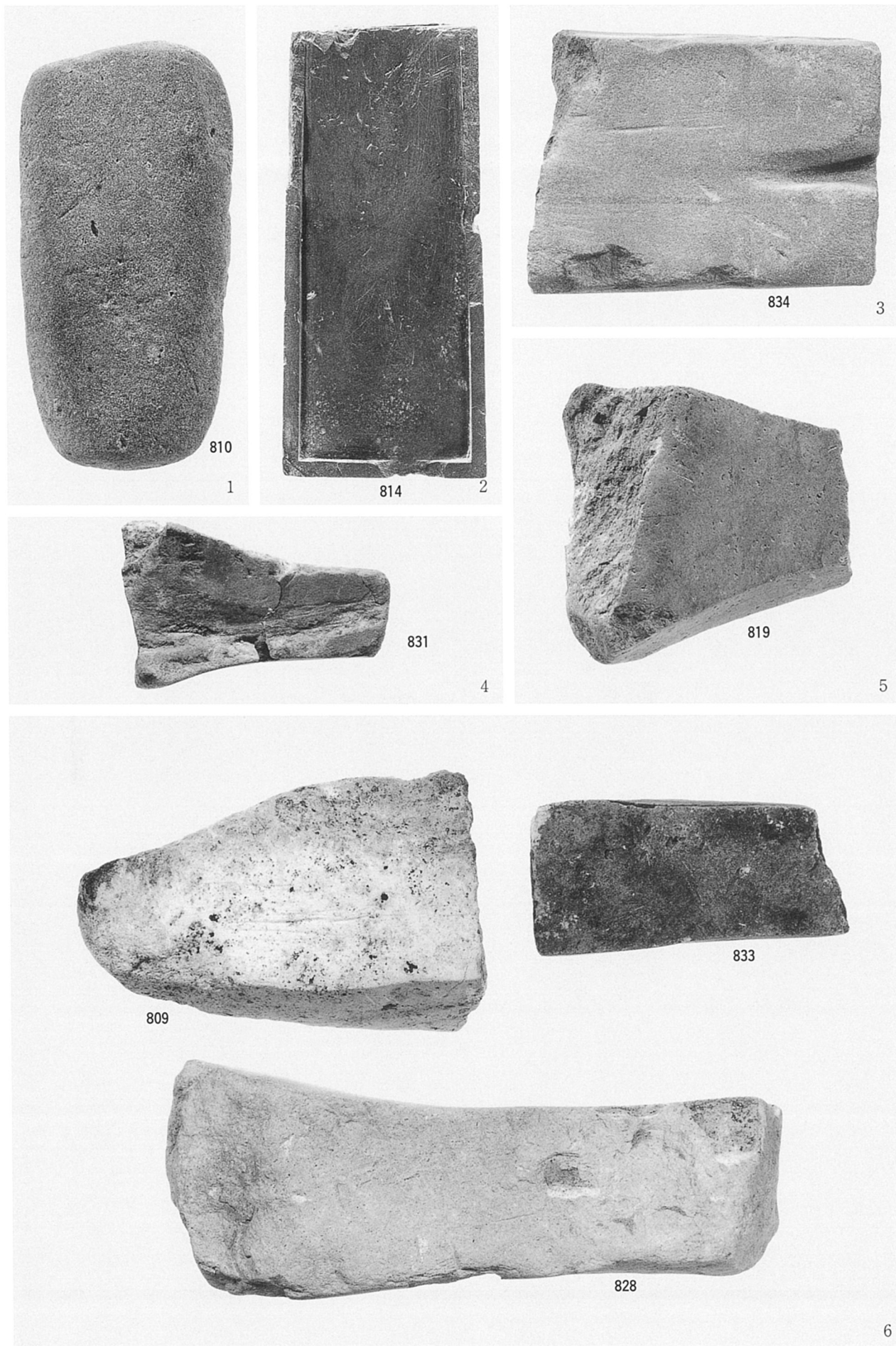
1. 第3遺構面以上東壁 2. 第3遺構面ベース層 3. 第3遺構面ベース層 4. 土坑2280
 5. 第4遺構面ベース層 6. 第4遺構面ベース層 7. 河川2410



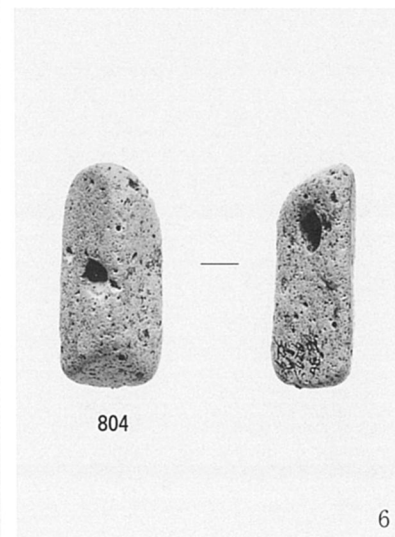
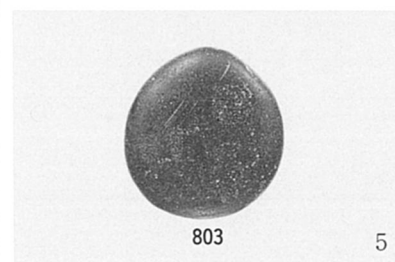
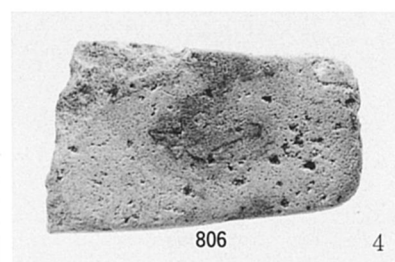
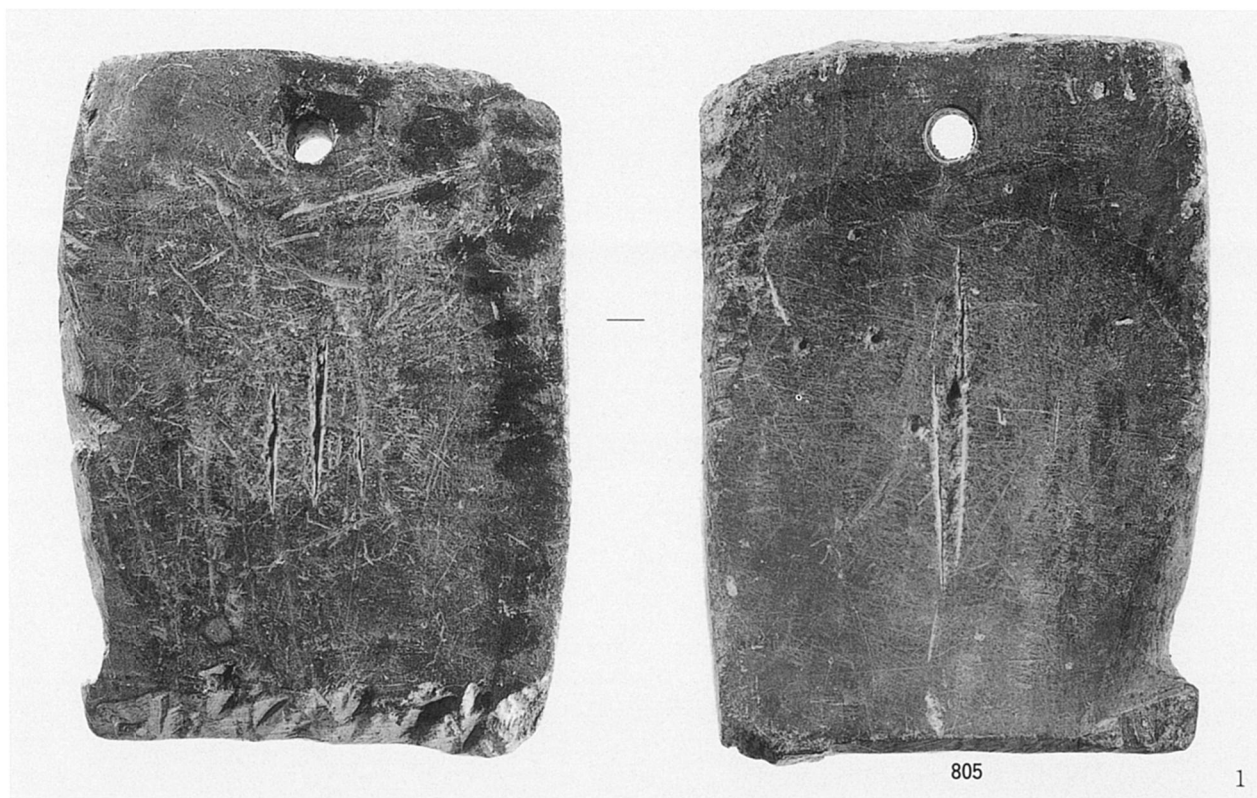
1. 溝2597 2. 2A区第4面上面 3. 土坑3003 4. 第4遺構面上面 5. 第2遺構面ベース層
6. 4A区第3遺構面ベース層 7. 4A区第3遺構面以下



1. 第3遺構面ベース層 2. pit71 3. 溝205 4. 3層以下 5. 817・823 第2遺構面ベース層
822 溝1466 829 第9遺構面ベース層



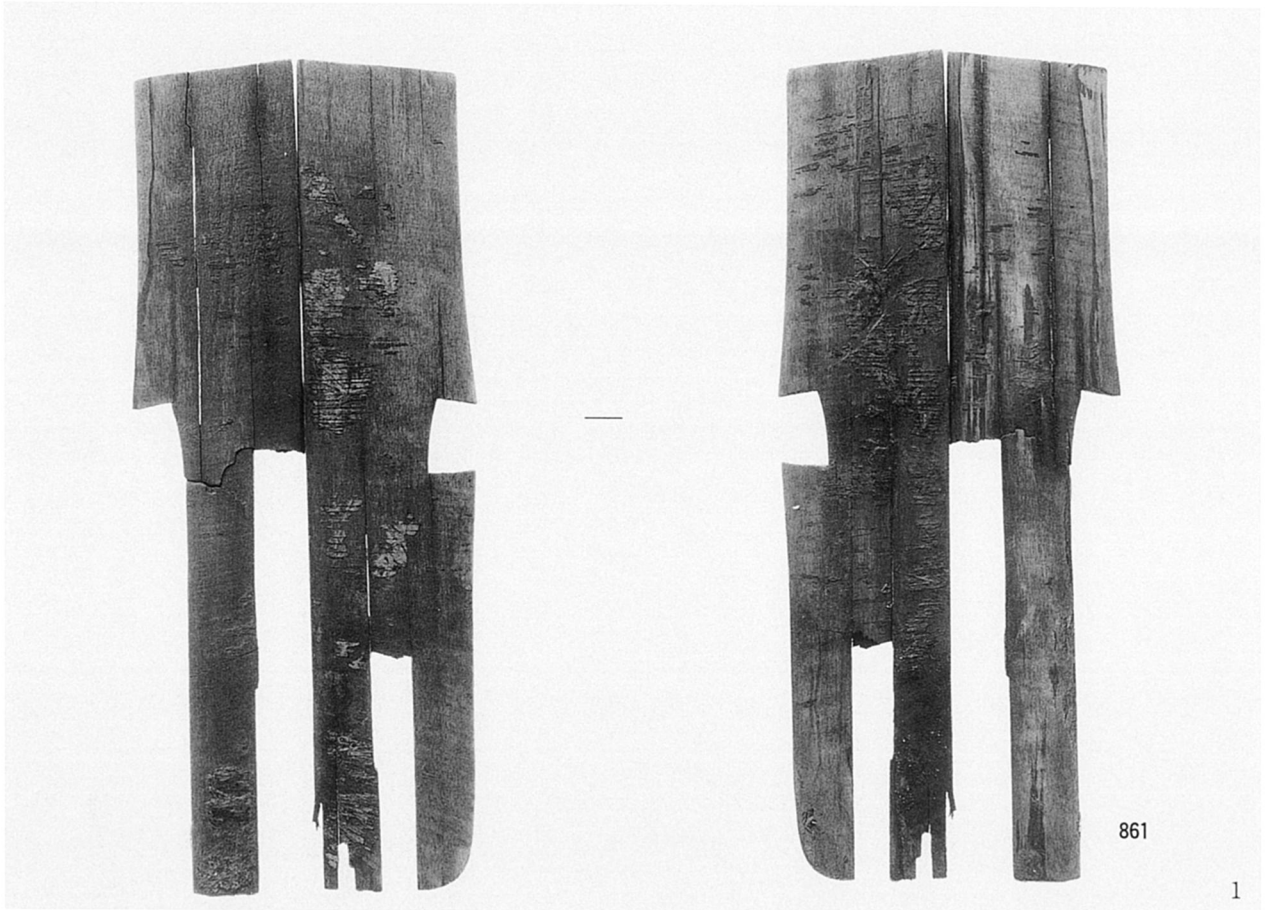
1. 河川203層 2・3. 溝204下層 4. 第8遺構面ベース層 5. 土坑1500 6. 809 土坑56
833 3層以下 828 第2遺構面ベース層



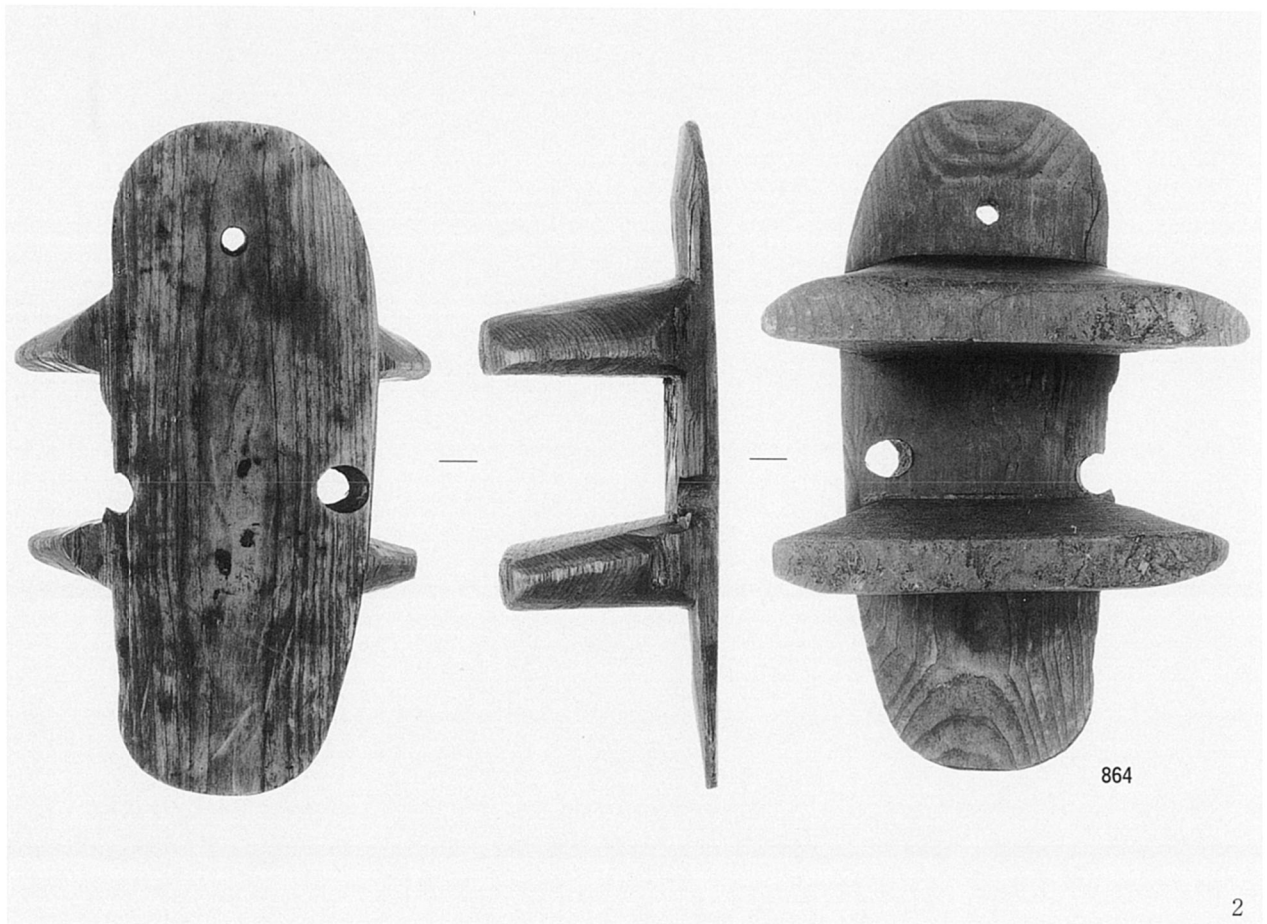
1～6. 土器溜54



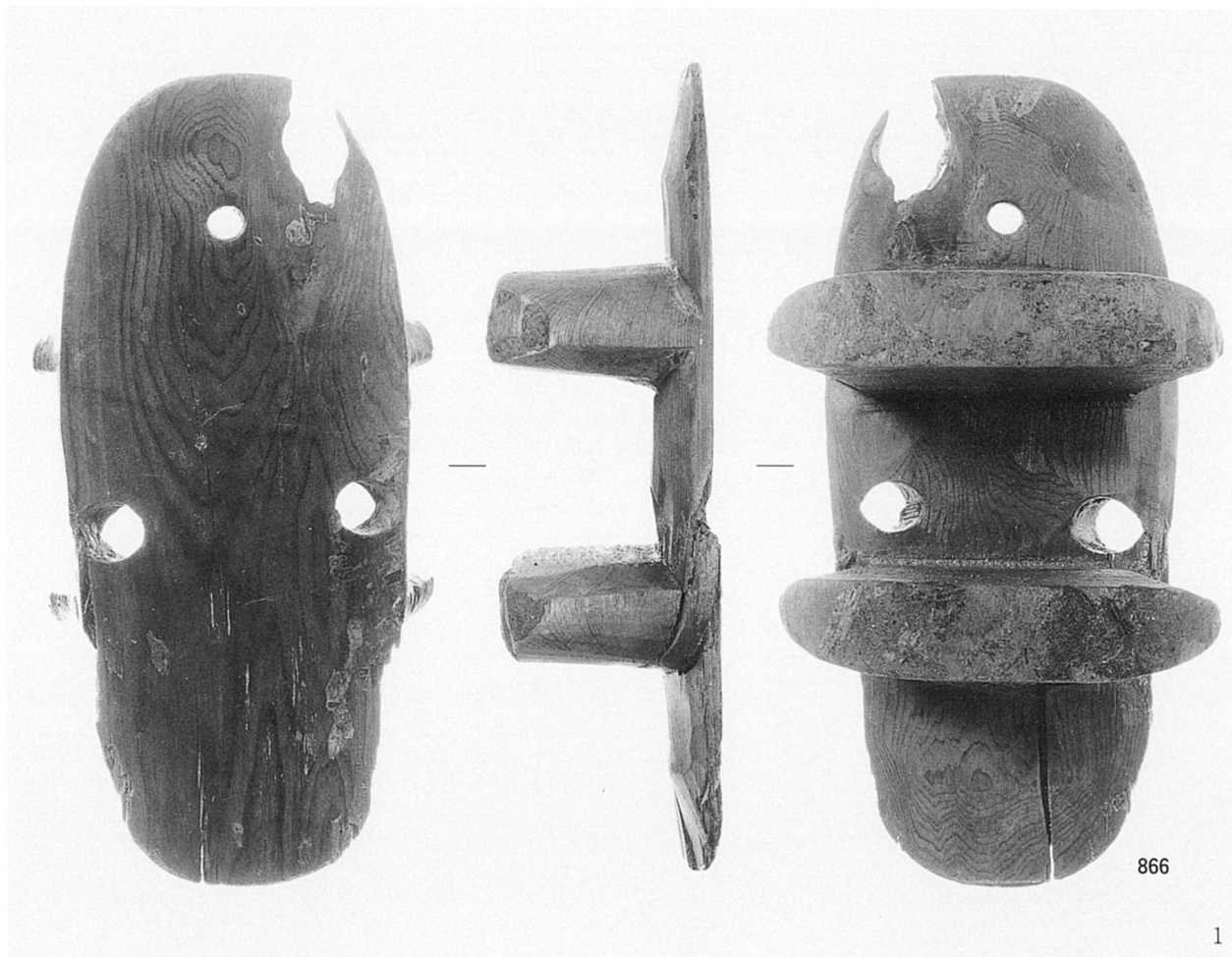
1. 河川2410 2. 河川2830 3. 河川2937 4. 落込3015 5. 井戸3635



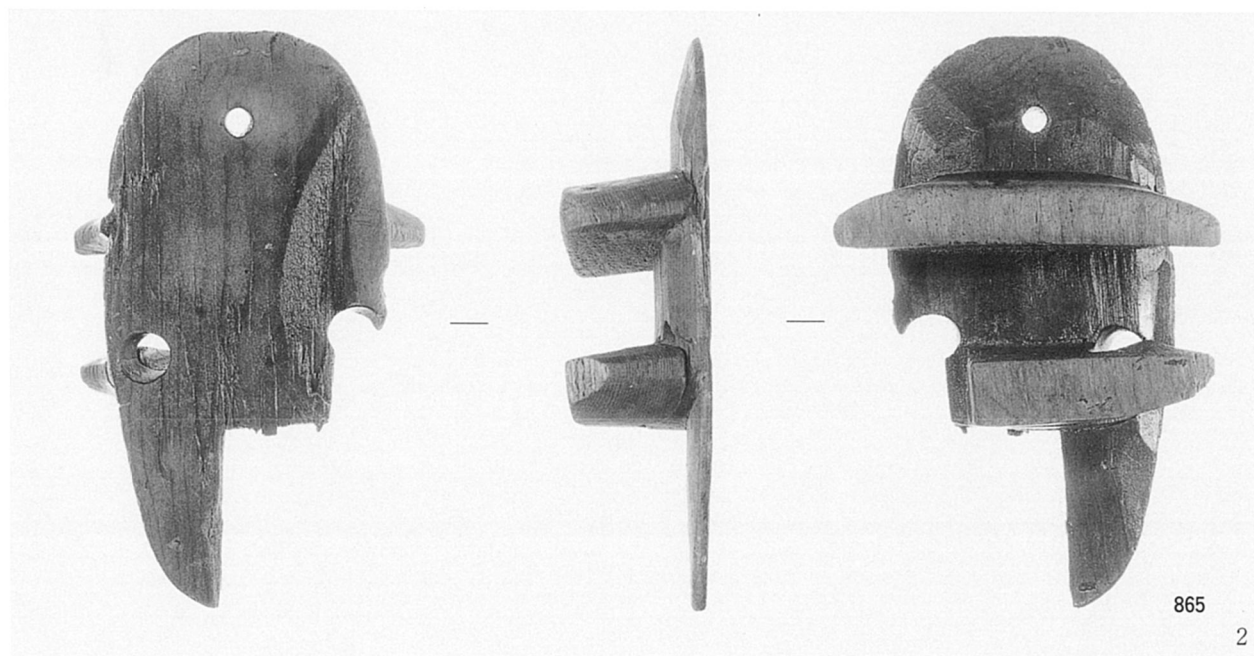
河川2937



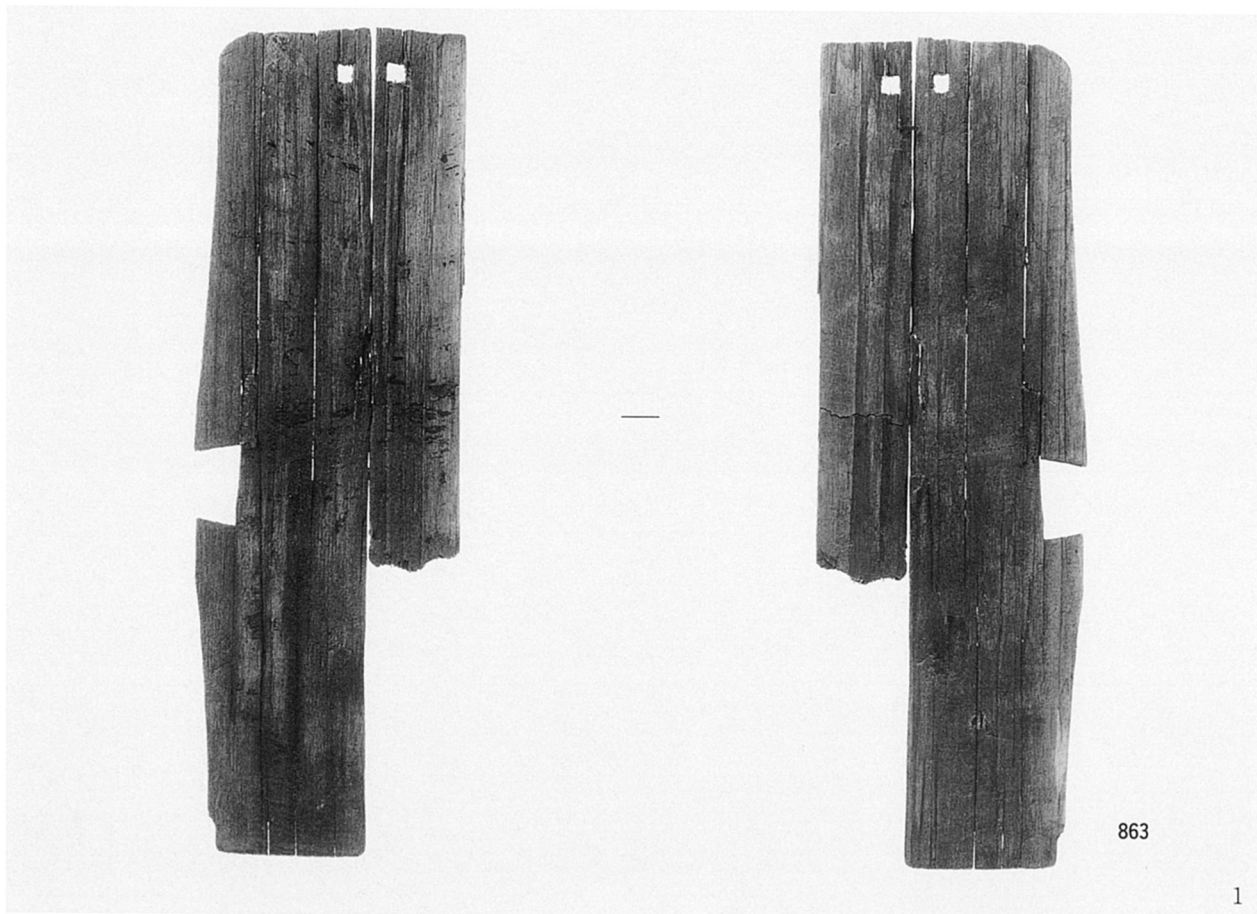
落込3596



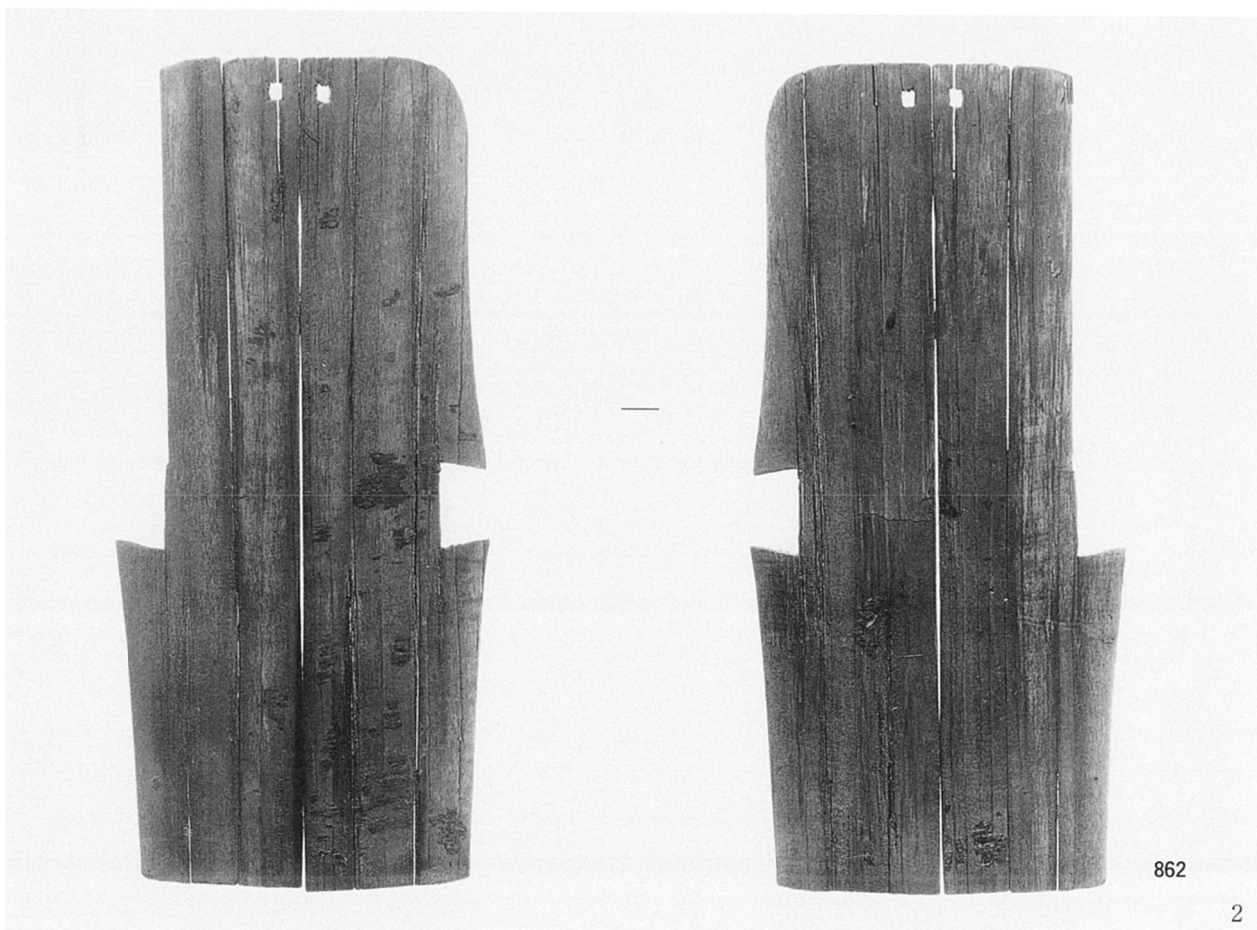
落达3596



落达3596



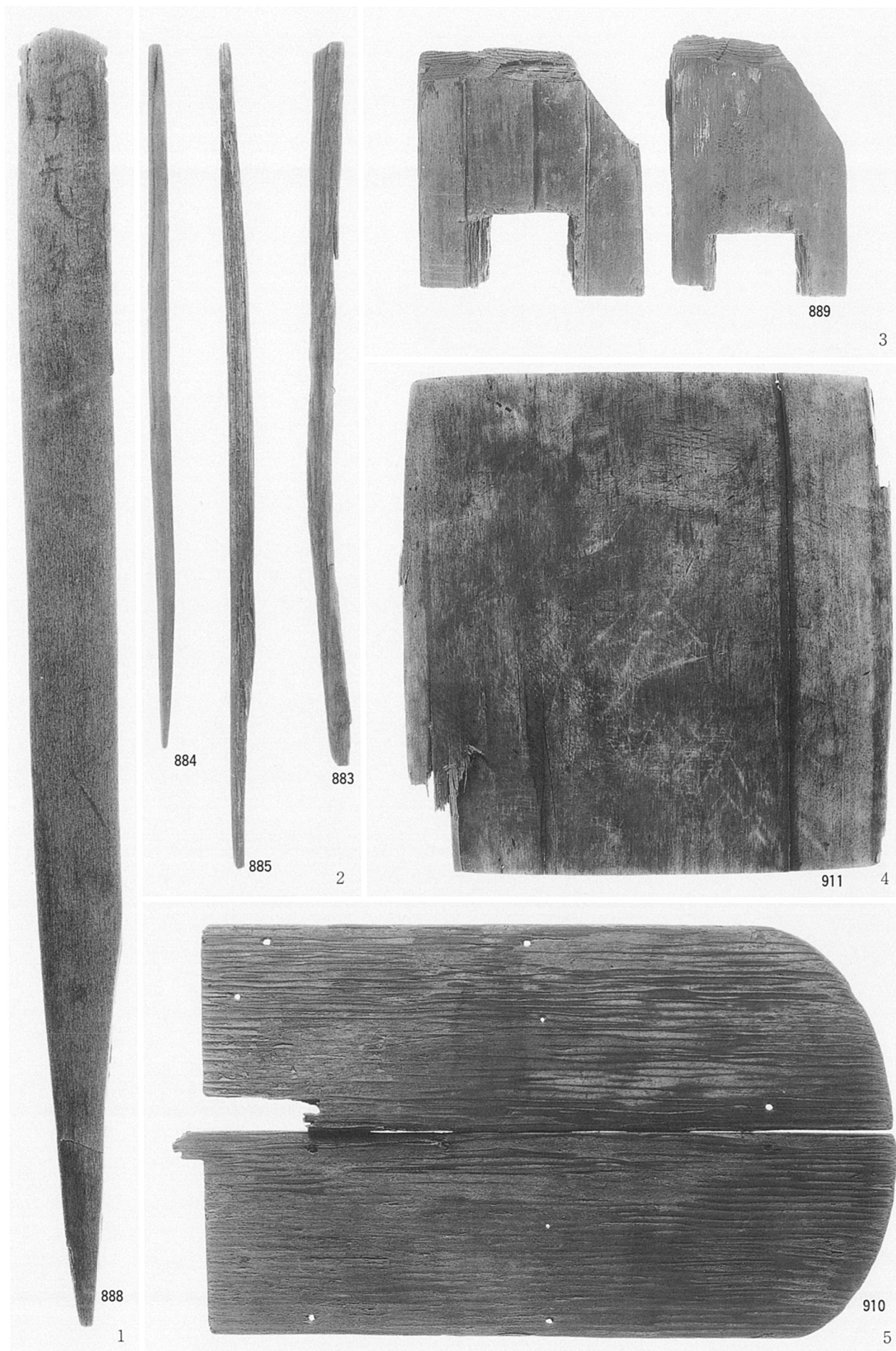
落达3596



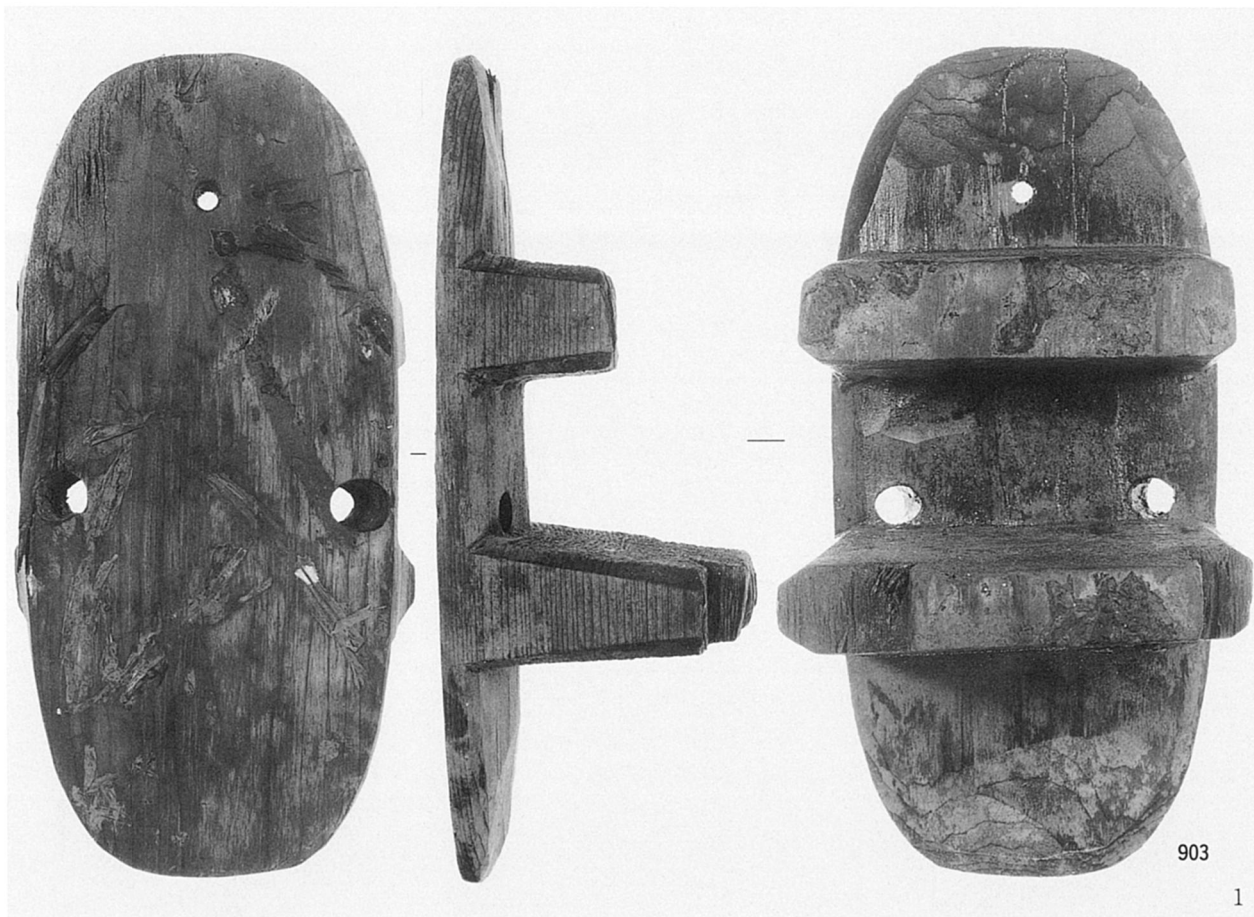
落达3596



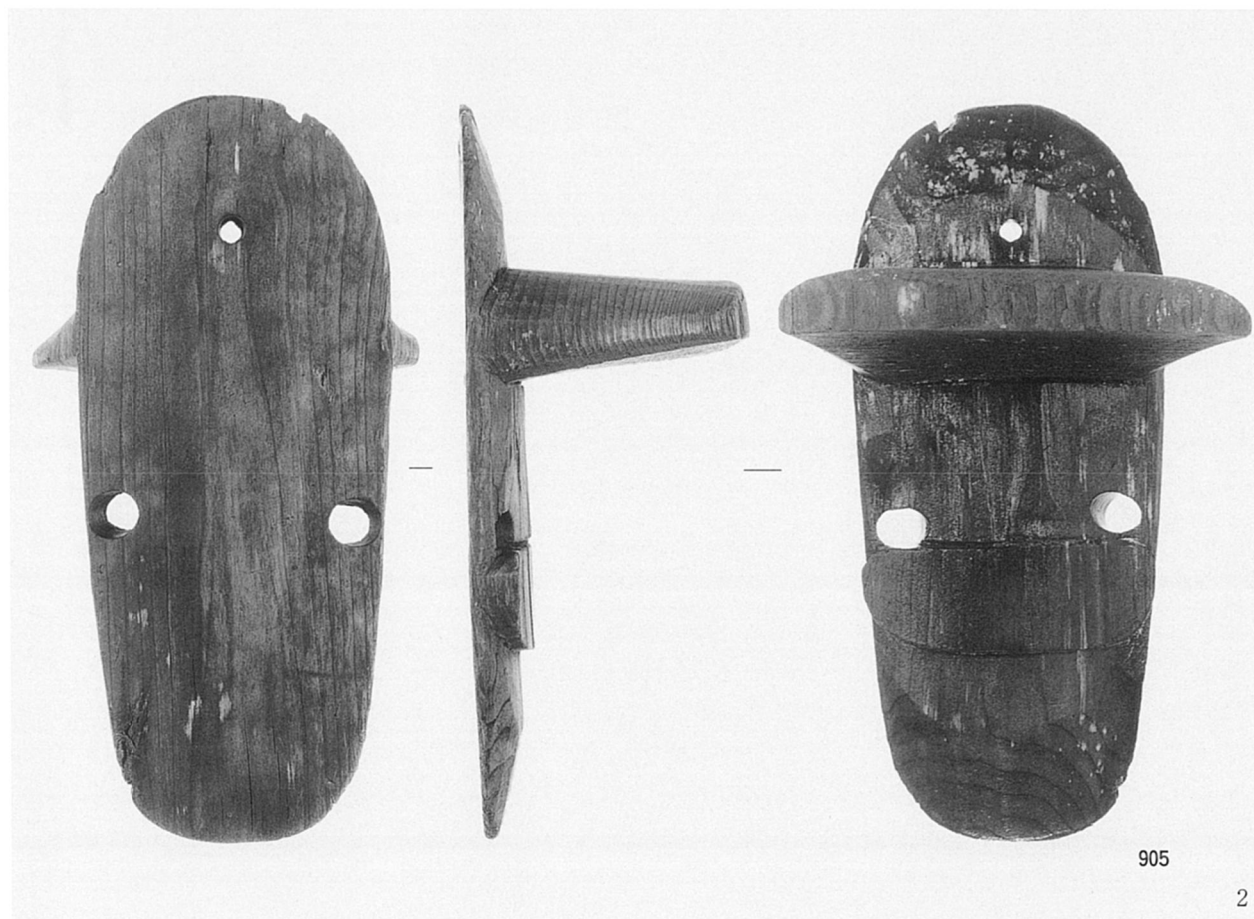
1・2. 井戸2599 2'. 2の墨書部分 3. pit2683 4. pit3524



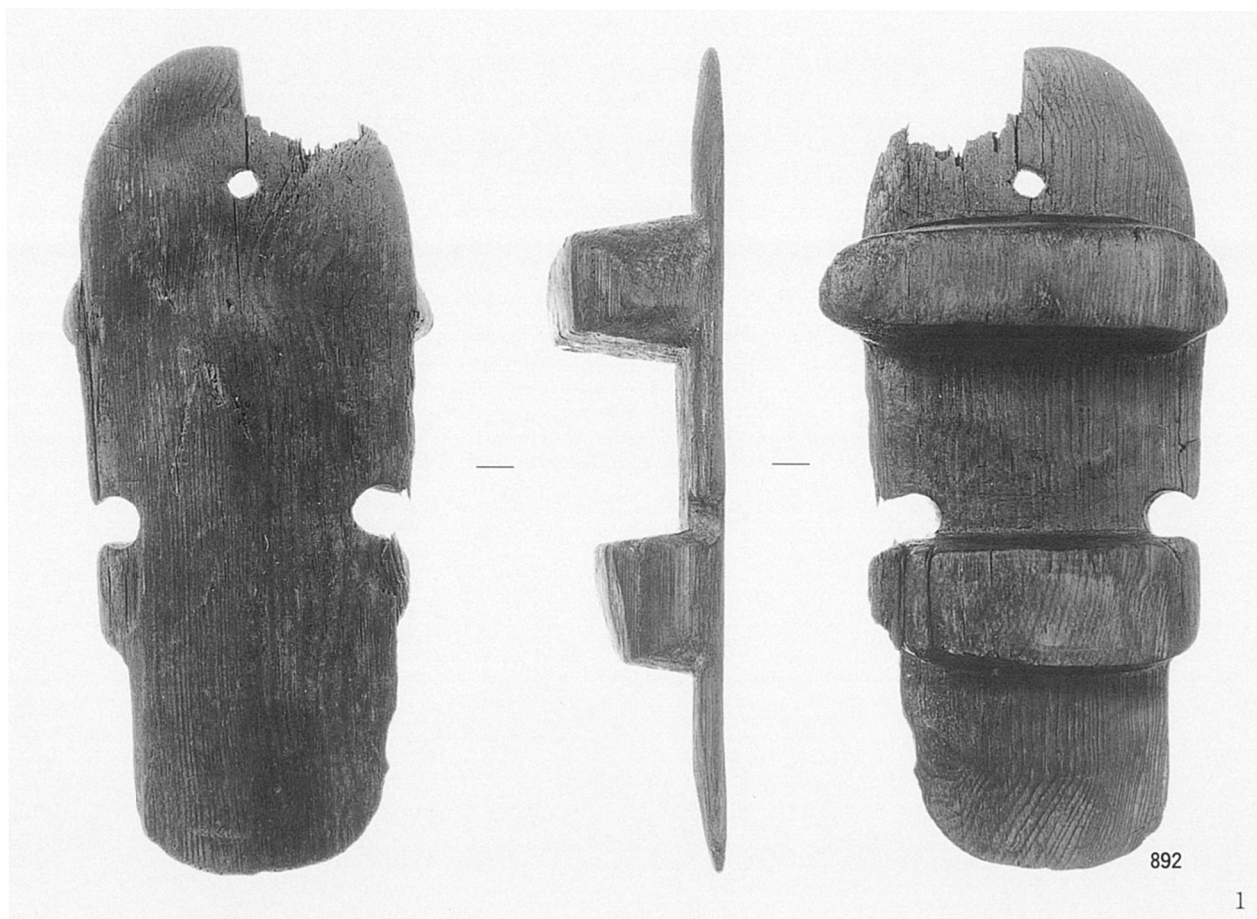
1. 井戸3566 2. 溝3024 3. pit3524 4. 井戸3031 5. 井戸3645



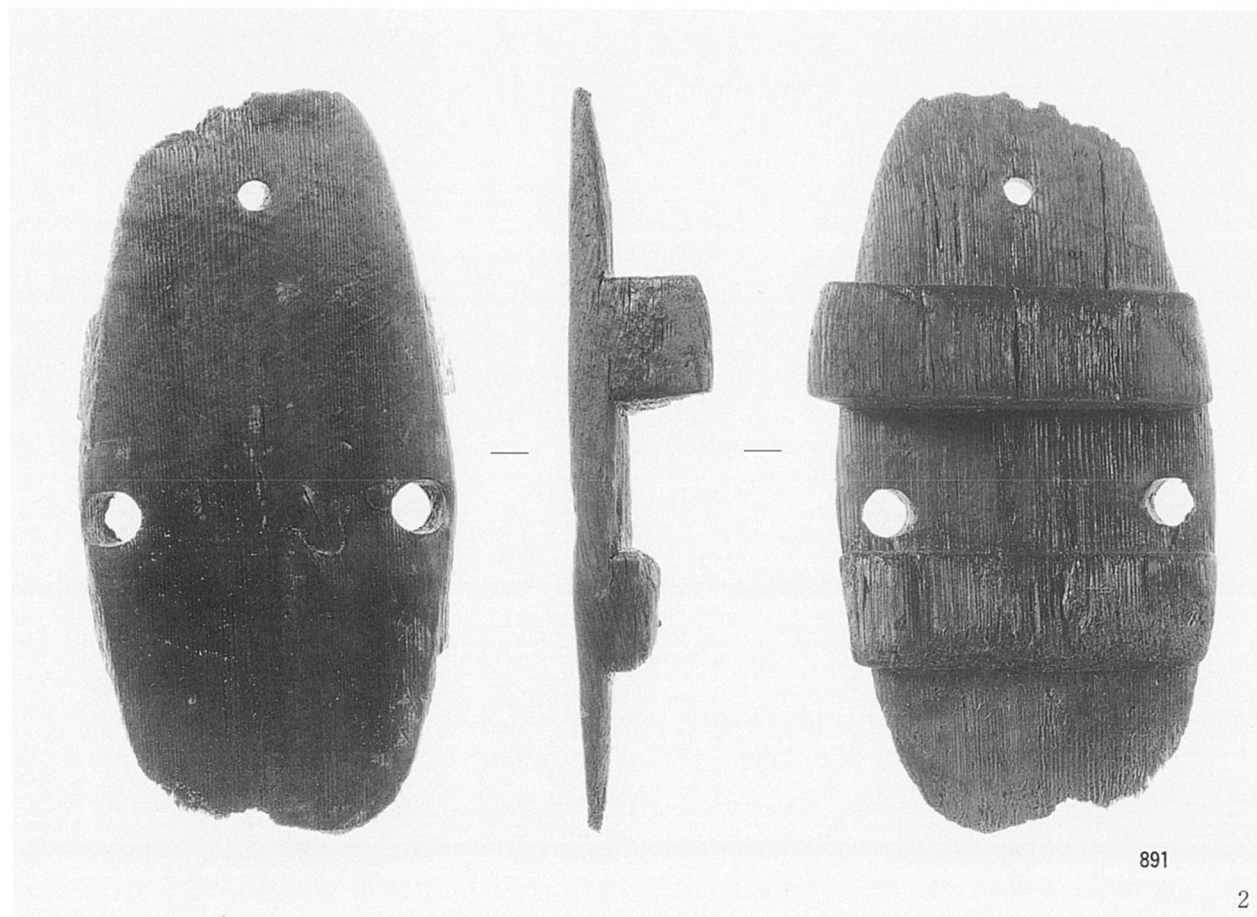
沟3210



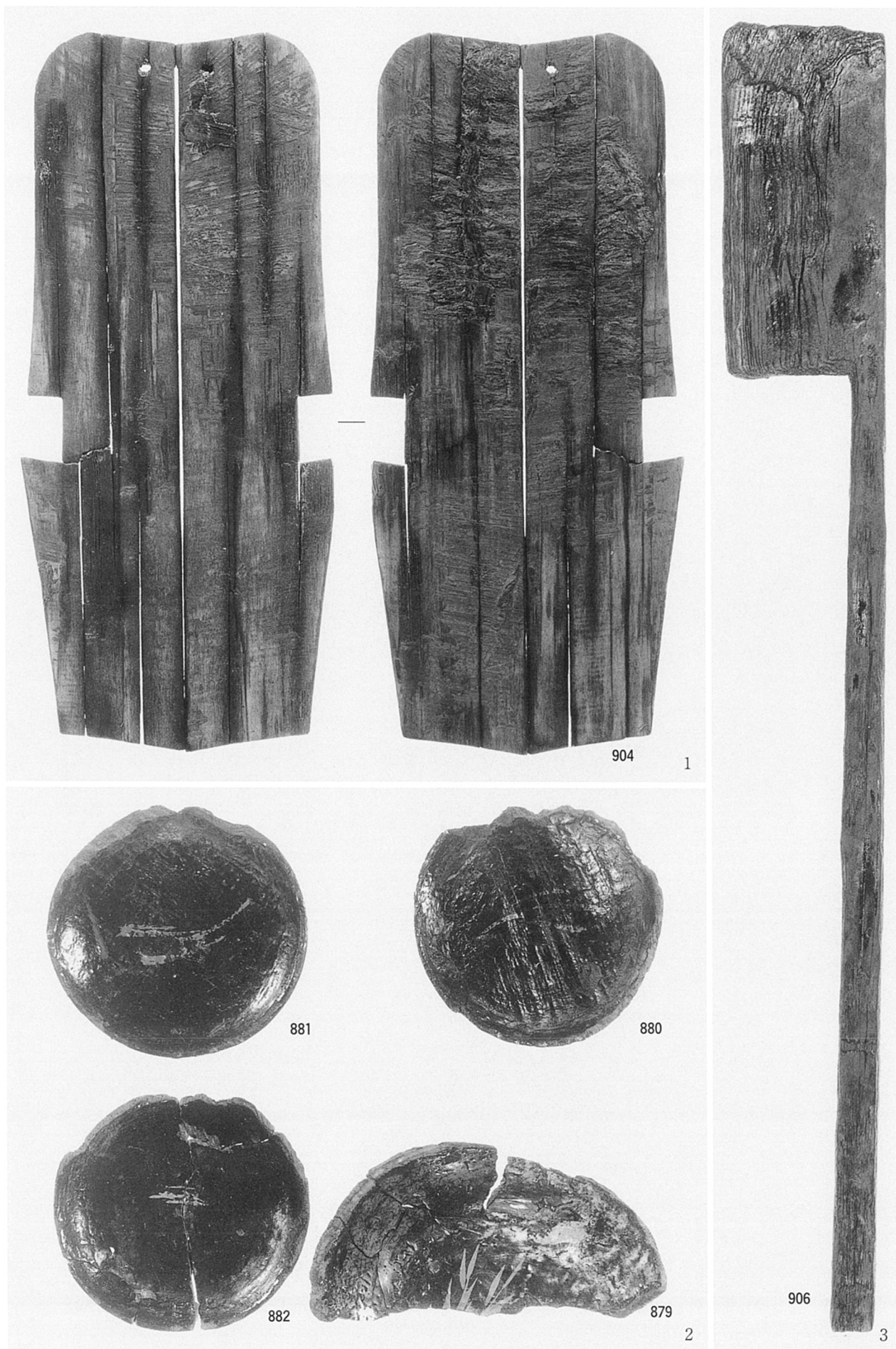
沟3210



井戸3580



土坑3025



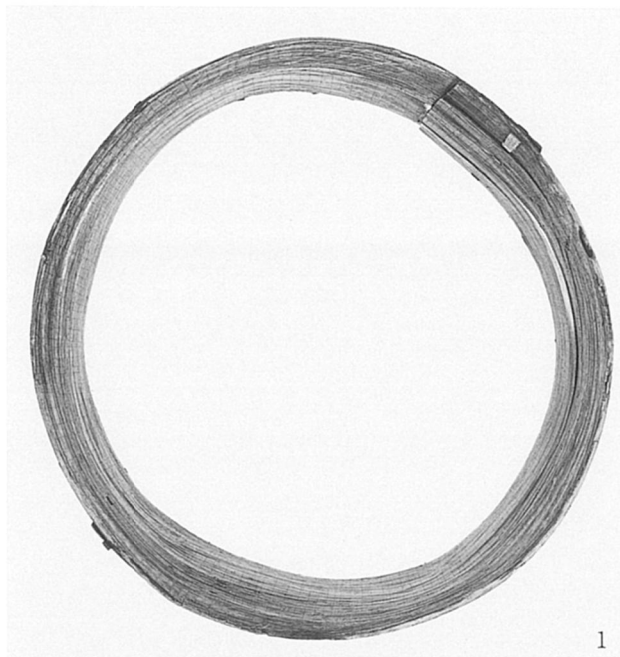
1 · 3. 溝3210 2. 溝3028



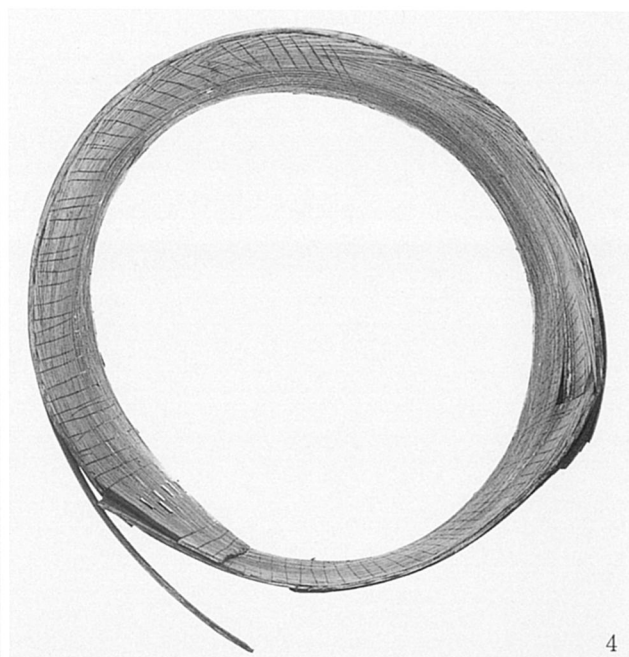
井戸1226井戸枠上段 1. 廻し板の綴じ目方向から
2. 側板の綴じ目方向から



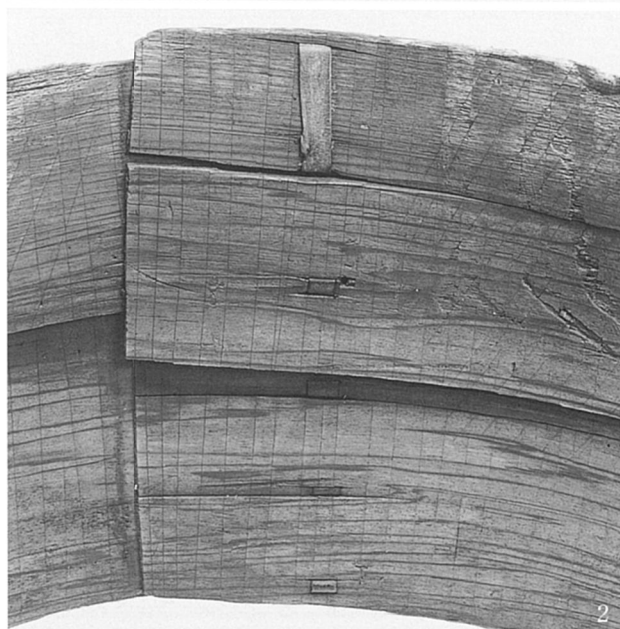
井戸1226井戸枠下段 1. 廻し板の綴じ目方向から
2. 側板の綴じ目方向から



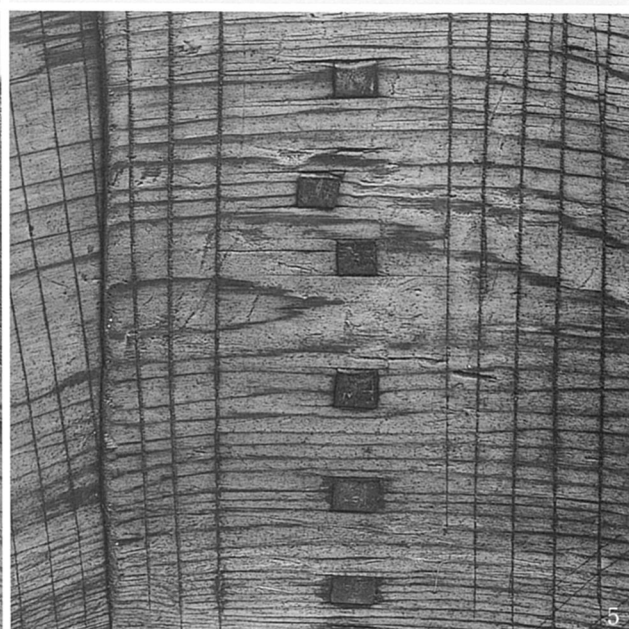
1



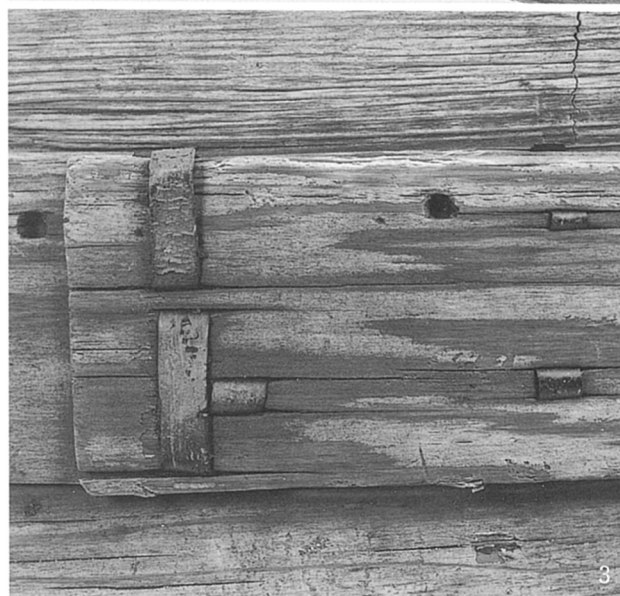
4



2



5



3



6

1～3. 井戸枠上段 1. 俯瞰 2. 内面綴じ目部分 3. 外面廻し板綴じ目部分
4～6. 井戸枠下段 4. 俯瞰 5. 内面綴じ目部分 6. 外面廻し板綴じ目部分



1 ~ 7. 井戸3820



1



2



929

1'



928

2'



3



4

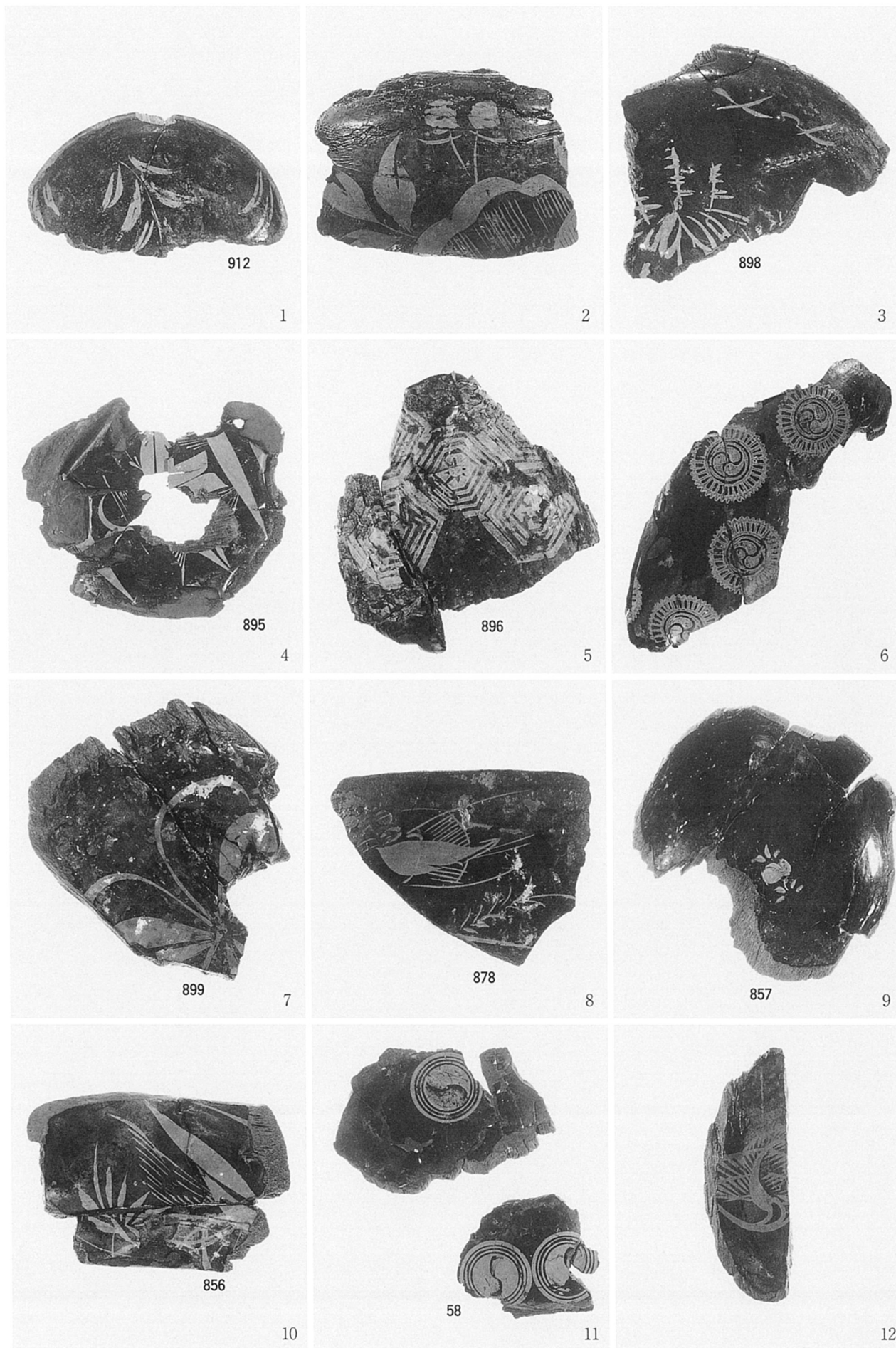


3'

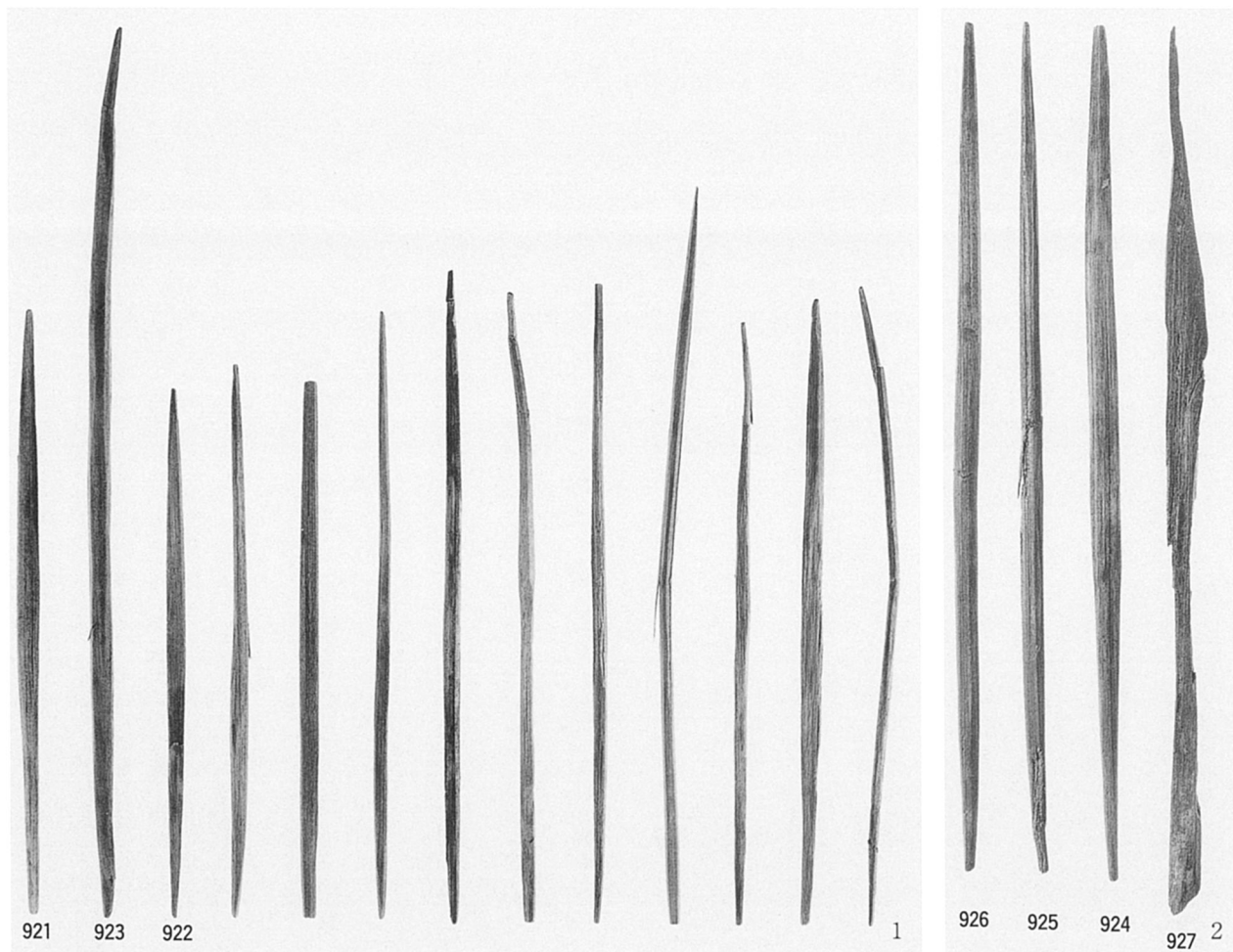


4'

1. 井戸3820 2. 溝3916 3·4. 溝3210



1·2. 井戸3820 3~7. 溝3210 8. 井戸3645 9. 落込3015 10. 落込3596 11. 1 A区測溝
12. 2 A区測溝



井戸3820



溝3916