



189-0A 土層断面(南から)



424-0Z 全景(南東から)



423-0X 全景(東から)



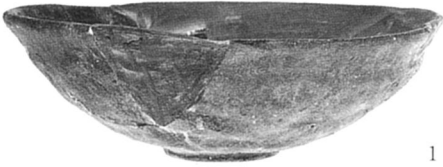
835~837-0X 全景(西から)



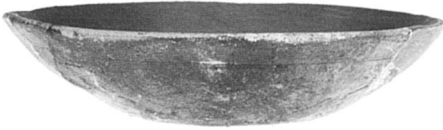
26



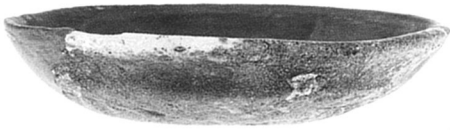
27



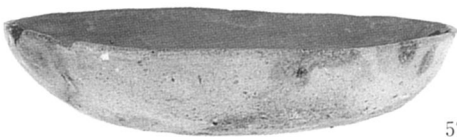
1



3



5



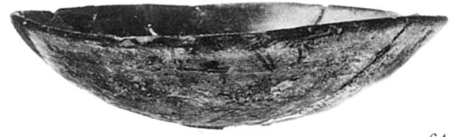
57



56



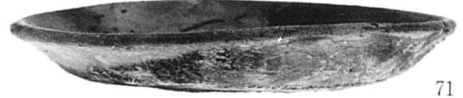
67



64



63



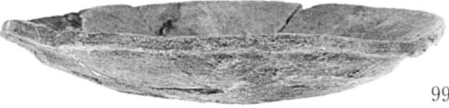
71



62



75



99



660



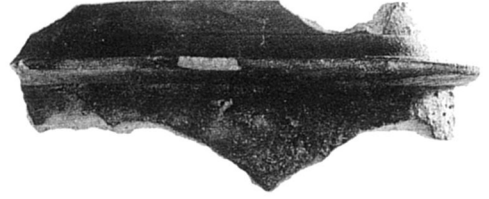
112



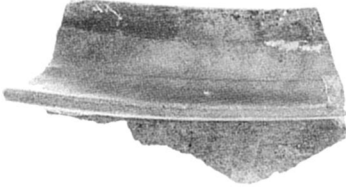
96



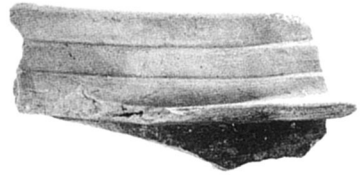
82



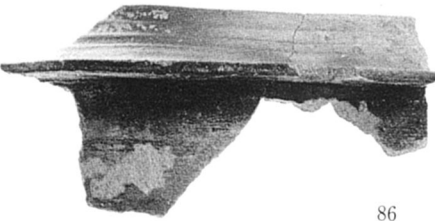
88



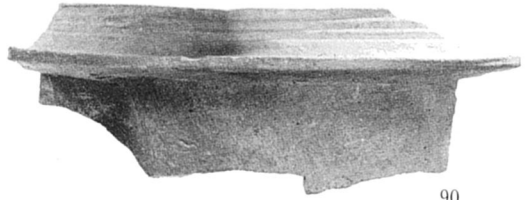
83



81



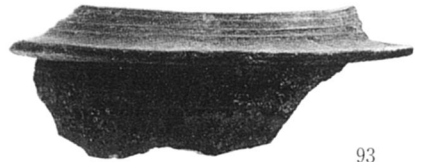
86



90



661



93



662



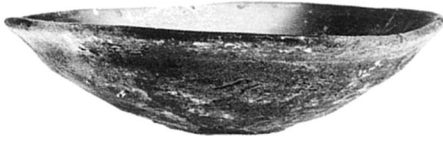
663



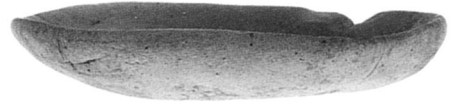
664



665



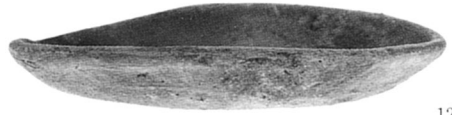
114



123



116



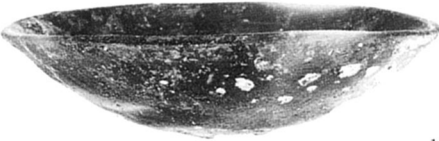
124



117



125



118



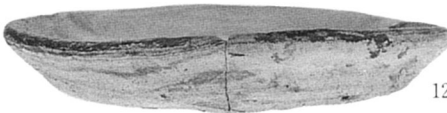
126



119



127



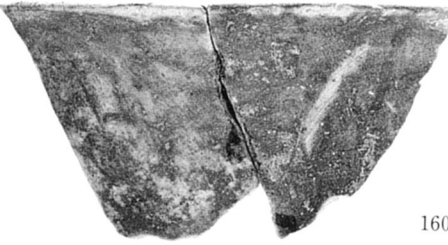
128



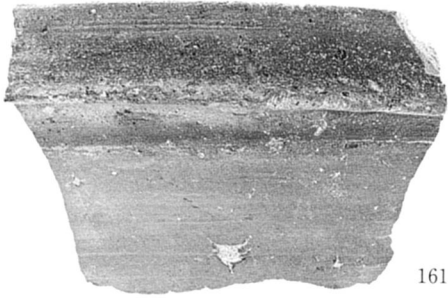
146



149



160



161



163



148



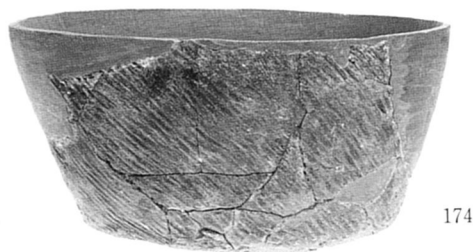
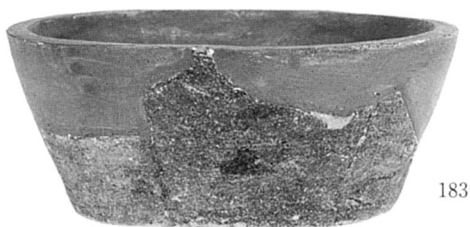
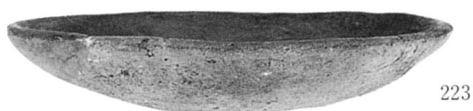
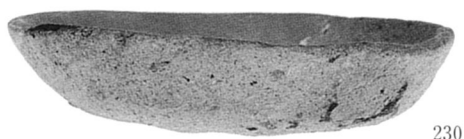
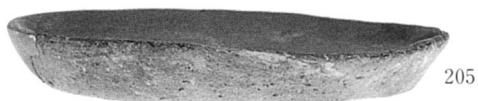
169



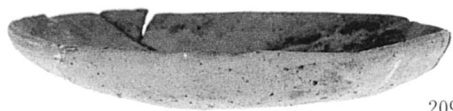
155



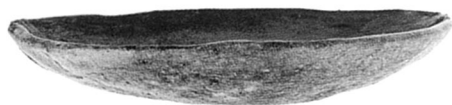
154



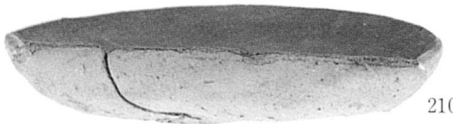




209



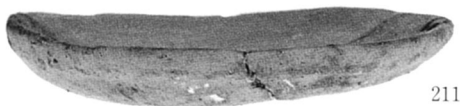
213



210



208



211



215



214



216



217



212



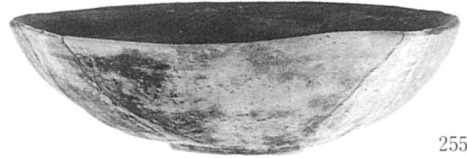
251



254



252



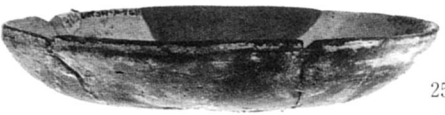
255



253



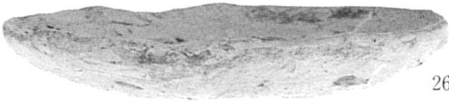
256



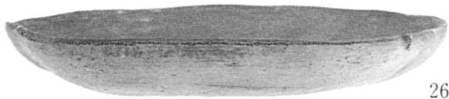
257



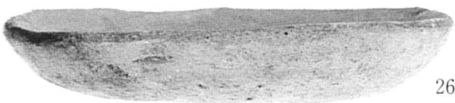
259



260



261



262



666



264



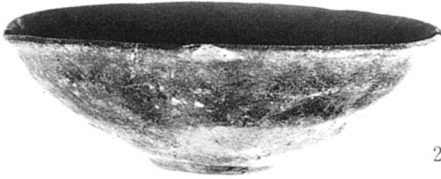
268



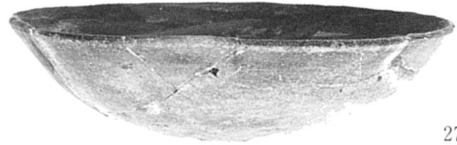
265



270



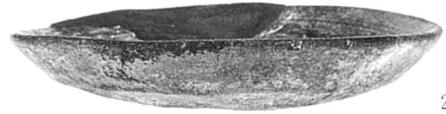
266



272



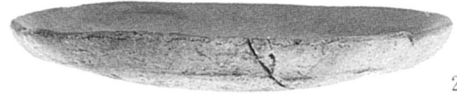
267



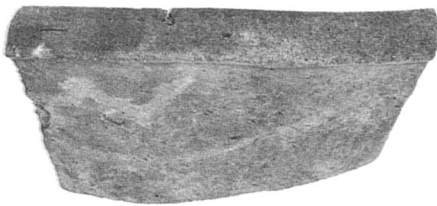
276



284



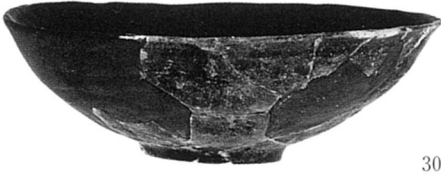
277



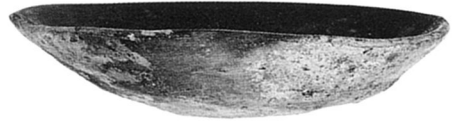
291



290



307



305



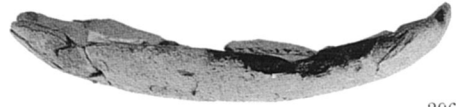
308



295



310



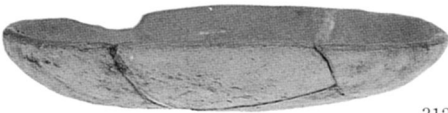
296



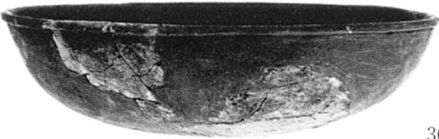
311



190



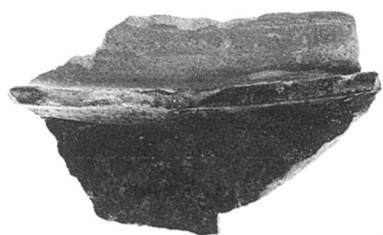
312



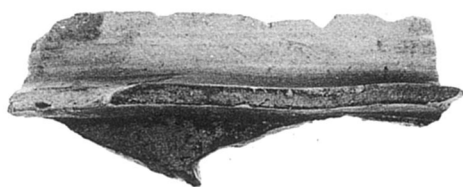
303



321



362



667



668



363



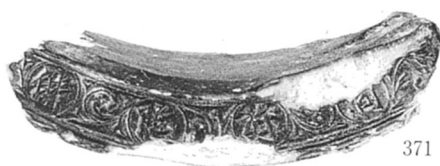
367



365



372



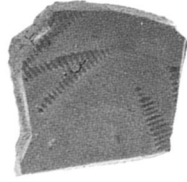
371



358



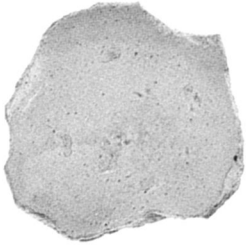
359



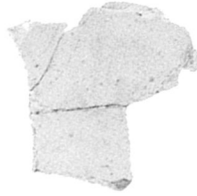
669



357



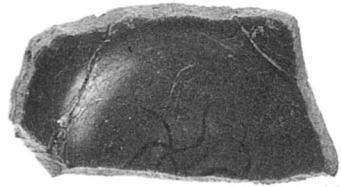
358



670



671



356

621-OS 出土遺物(青白磁・表)



359



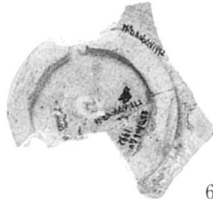
669



357



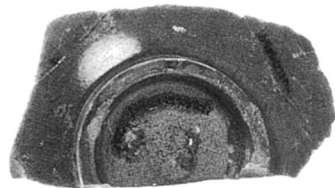
358



670

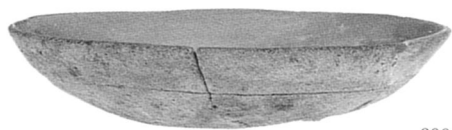


671

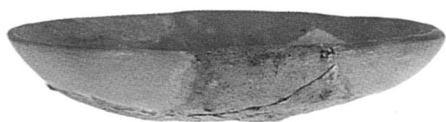


356

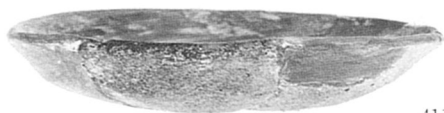
同上(青白磁・裏)



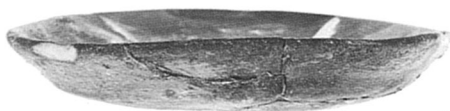
399



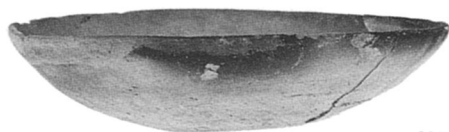
404



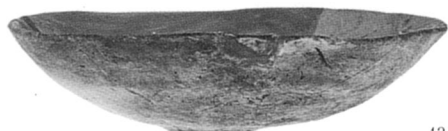
411



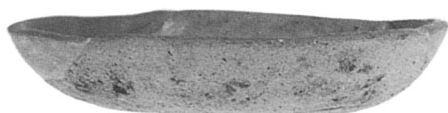
412



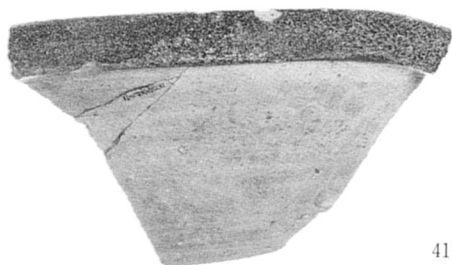
335



434



379



417



443



659



415



454



455



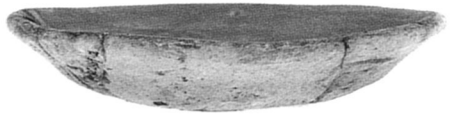
456



457



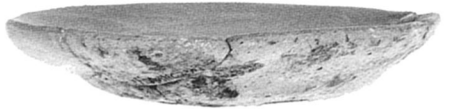
458



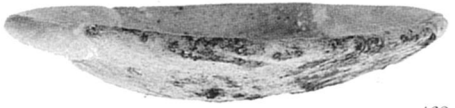
459



460



461



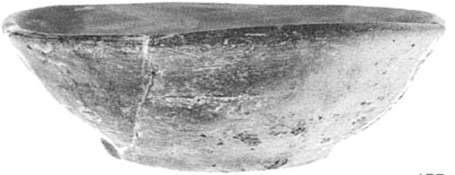
462



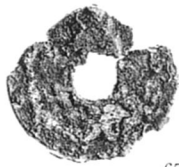
143



132



477



672



673



175



674



675

851-OP、358・370・375・409-OO、487-OL(a)、包含層出土遺物





465



467



468



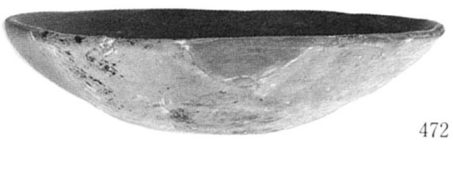
469



470



471



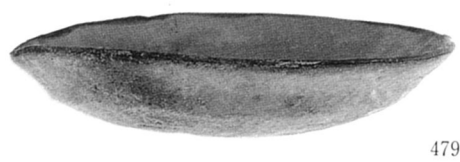
472



473



474



479



482



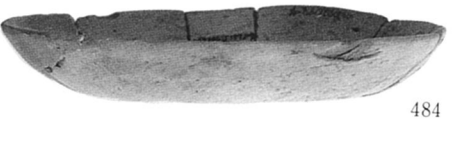
481



483



495



484



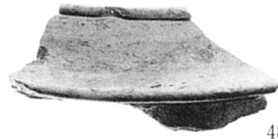
486



490



676



487



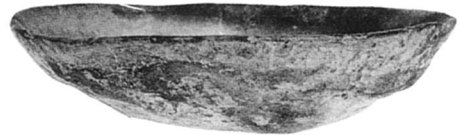
488



491



496



513



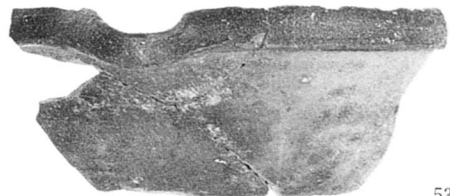
515



516



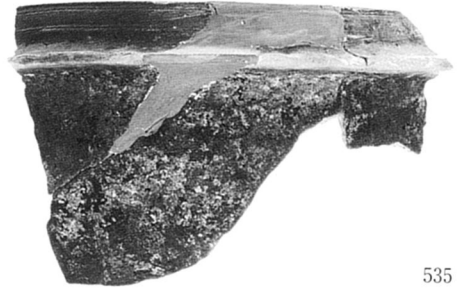
540



537



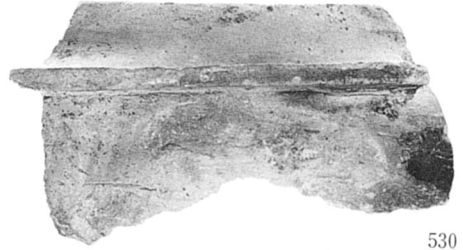
534



535



528



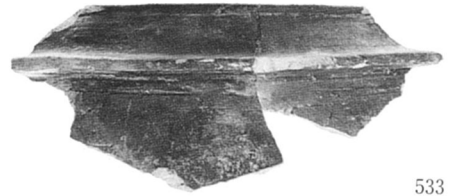
530



579



531



533



575



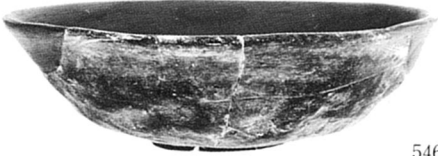
576



543



545



546



547



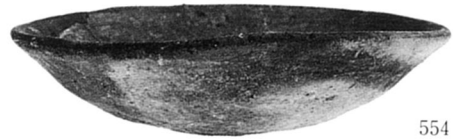
549



552



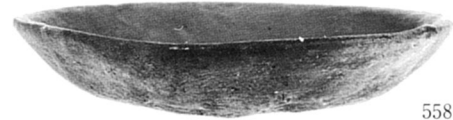
553



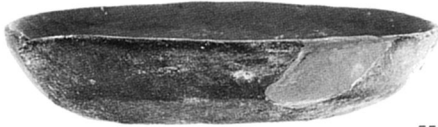
554



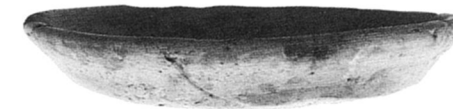
556



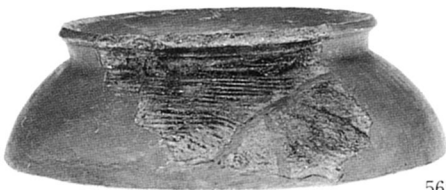
558



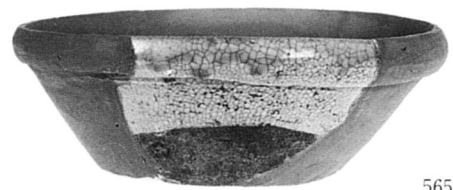
557



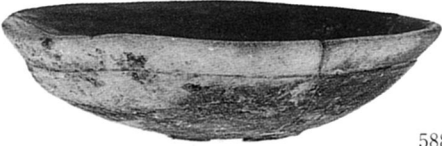
562



569



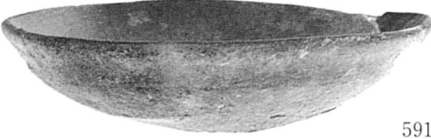
565



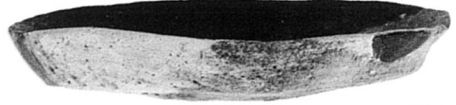
588



604



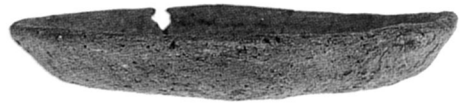
591



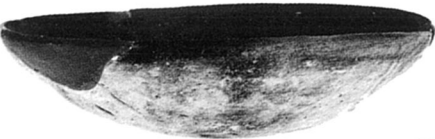
605



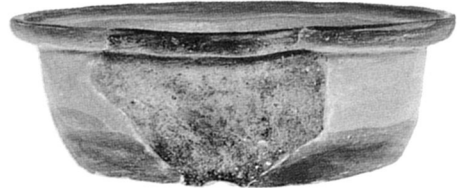
592



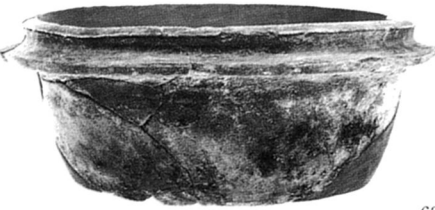
617



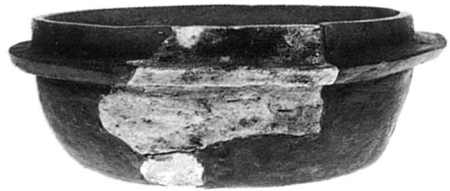
593



635



637



638



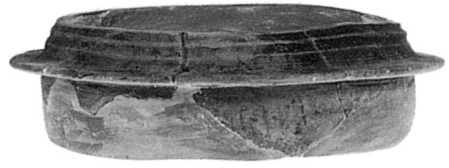
628



622



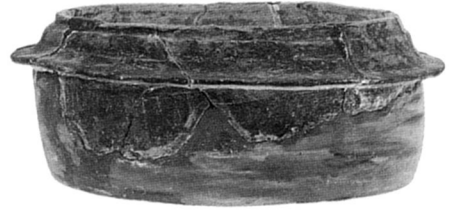
641



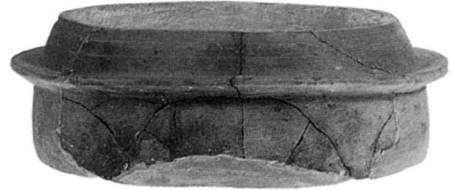
655



643



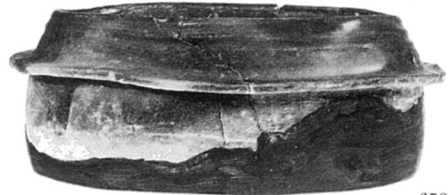
658



652



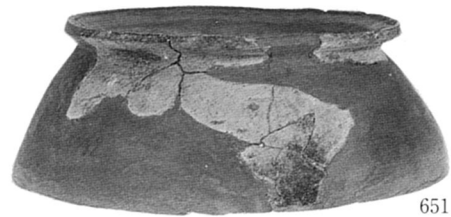
656



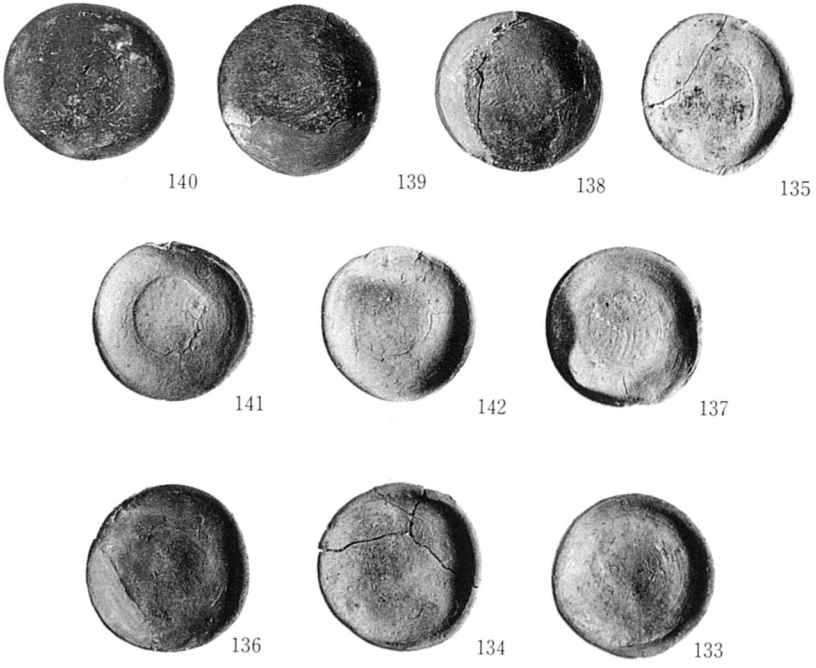
653



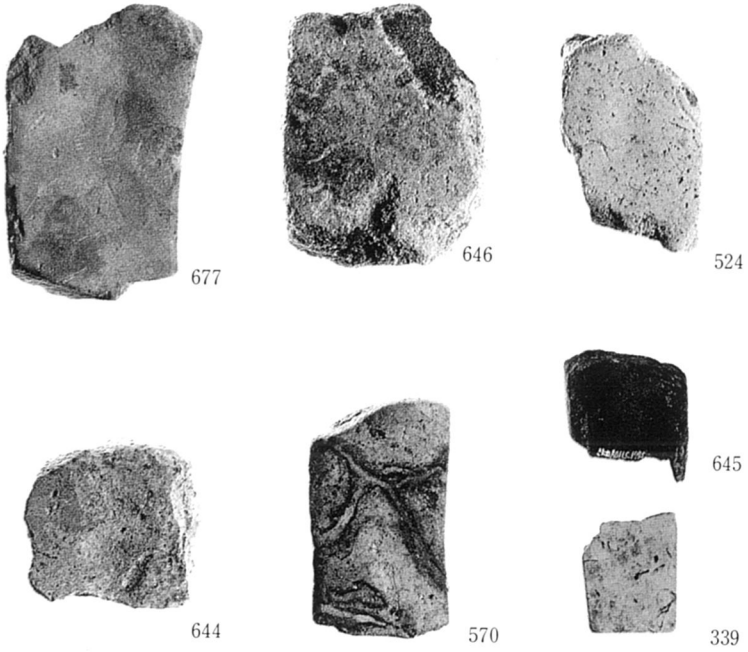
657



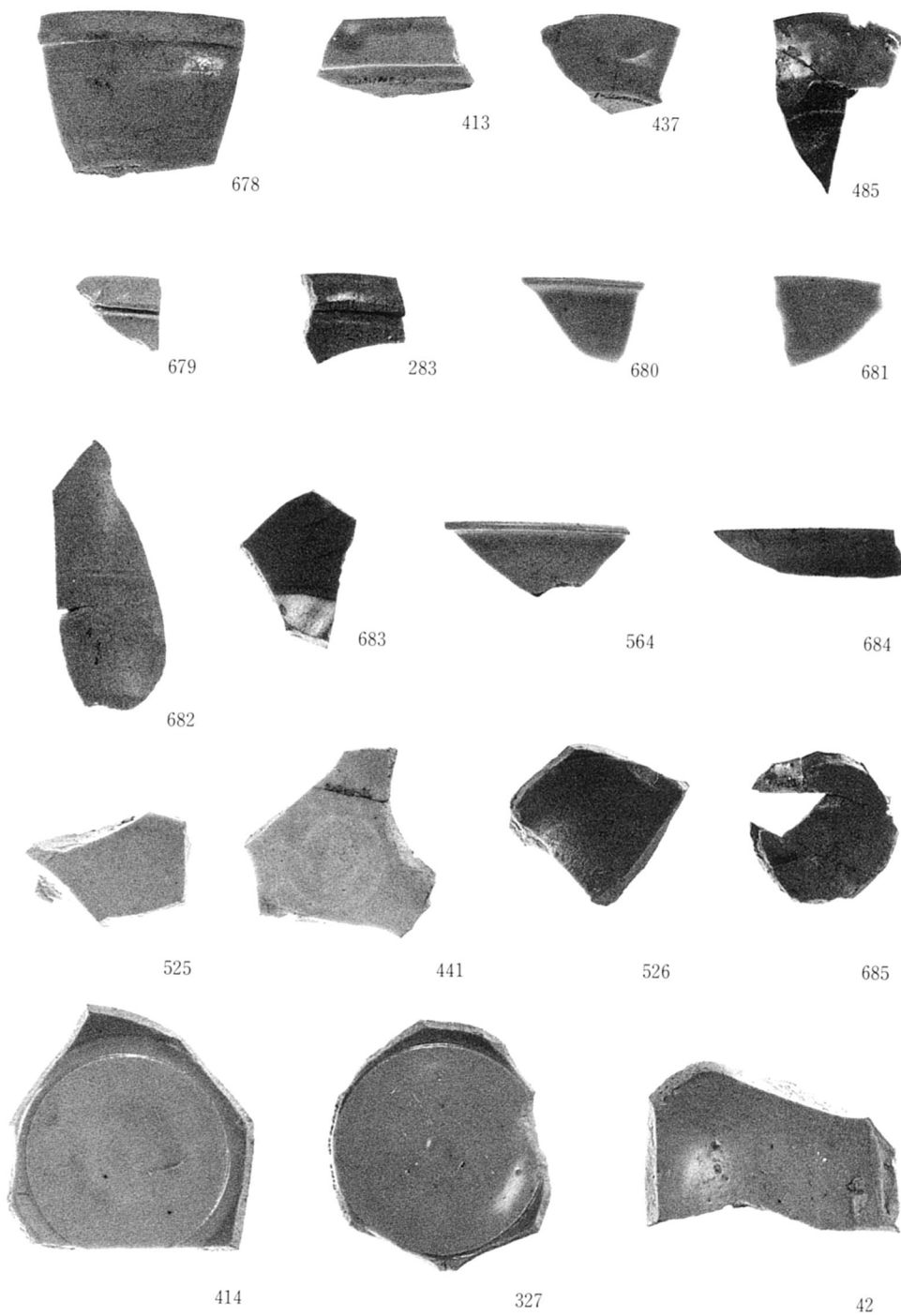
651



358-00 出土遺物

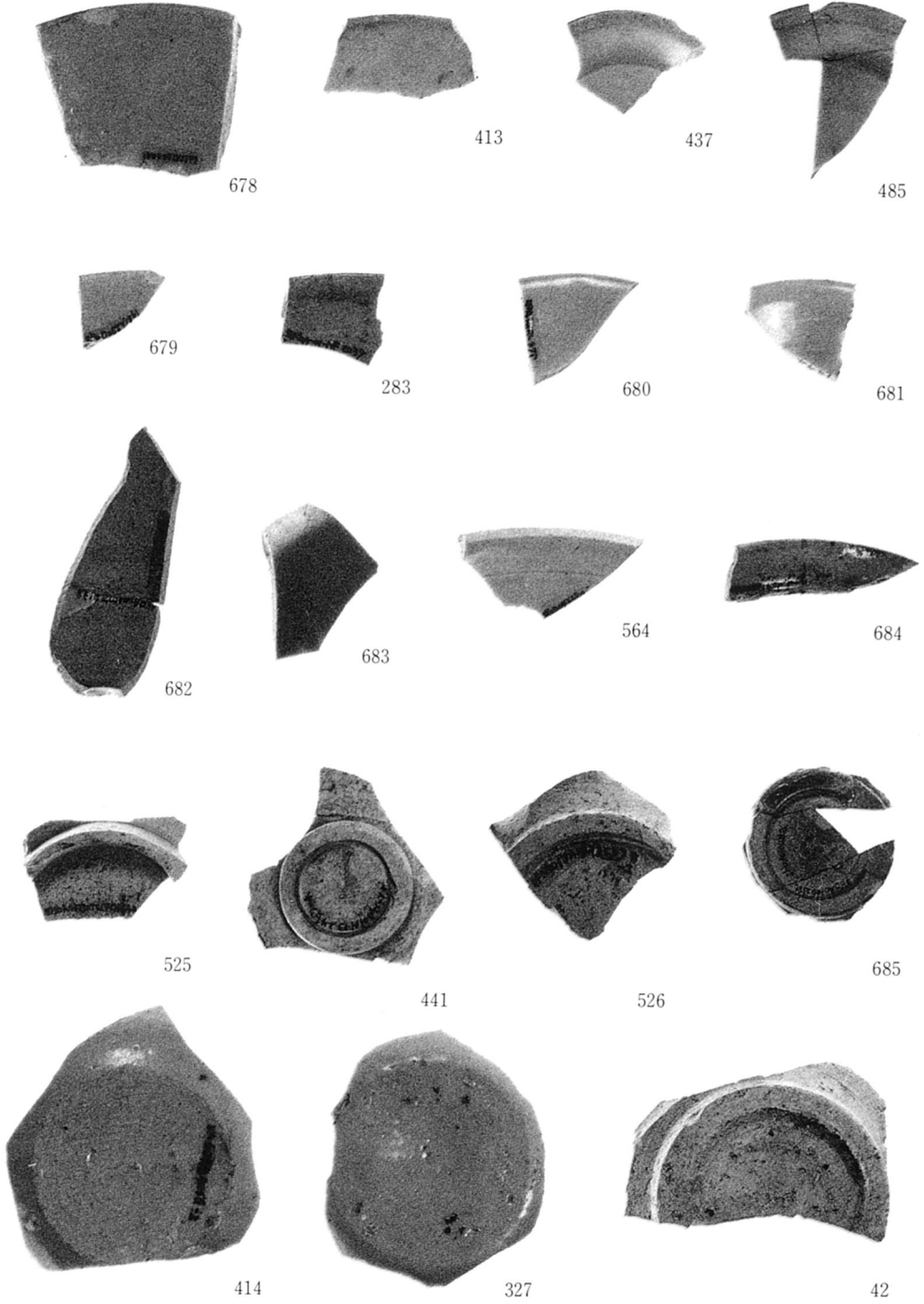


824-OW、431-OS、487-OL (d) (e) (f) 出土遺物

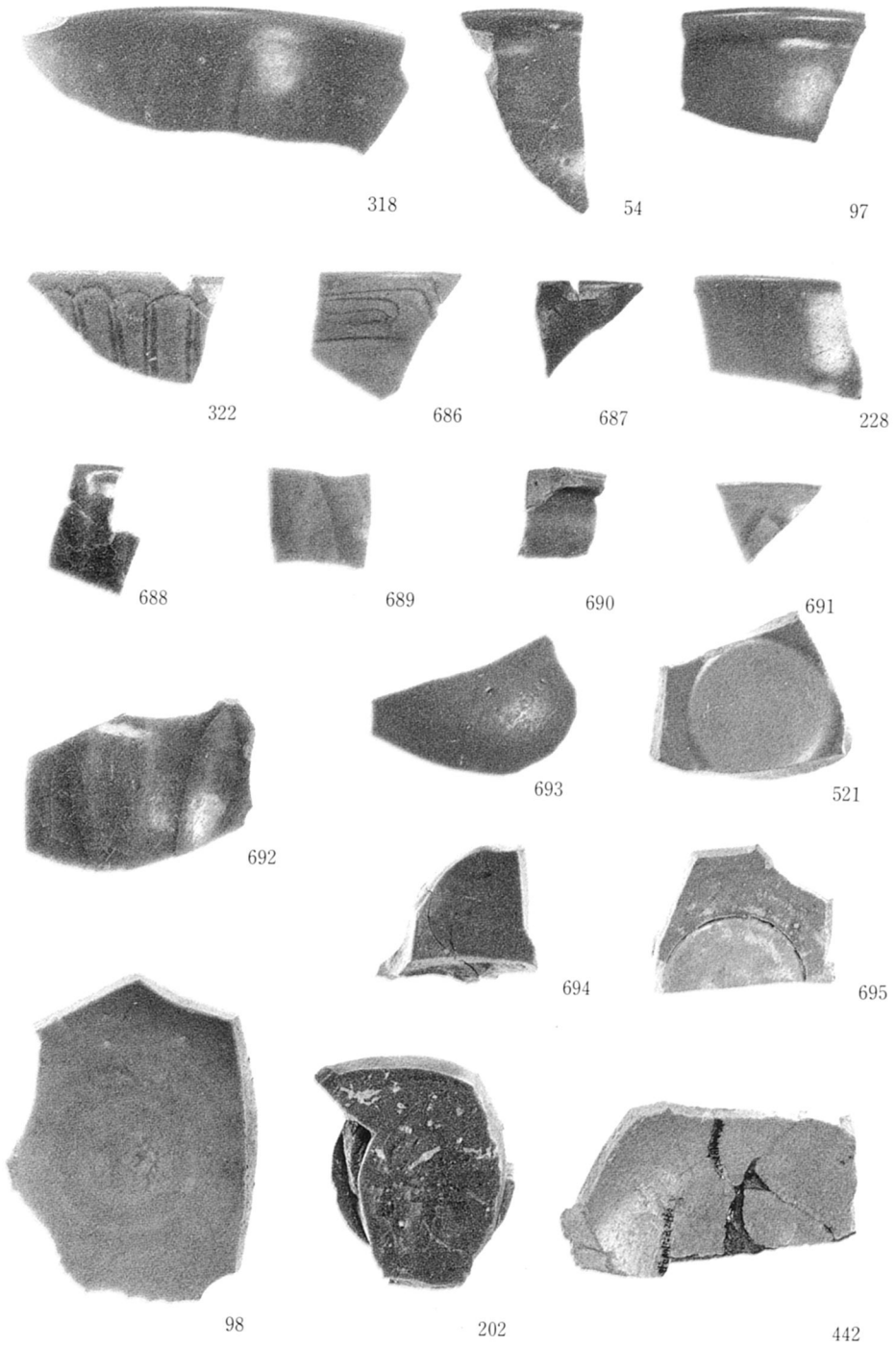


整地層、436-OW、474・700・883-00、867・889-OS、  
487-OL (a) (d) (e)、包含層出土遺物(白磁・表)

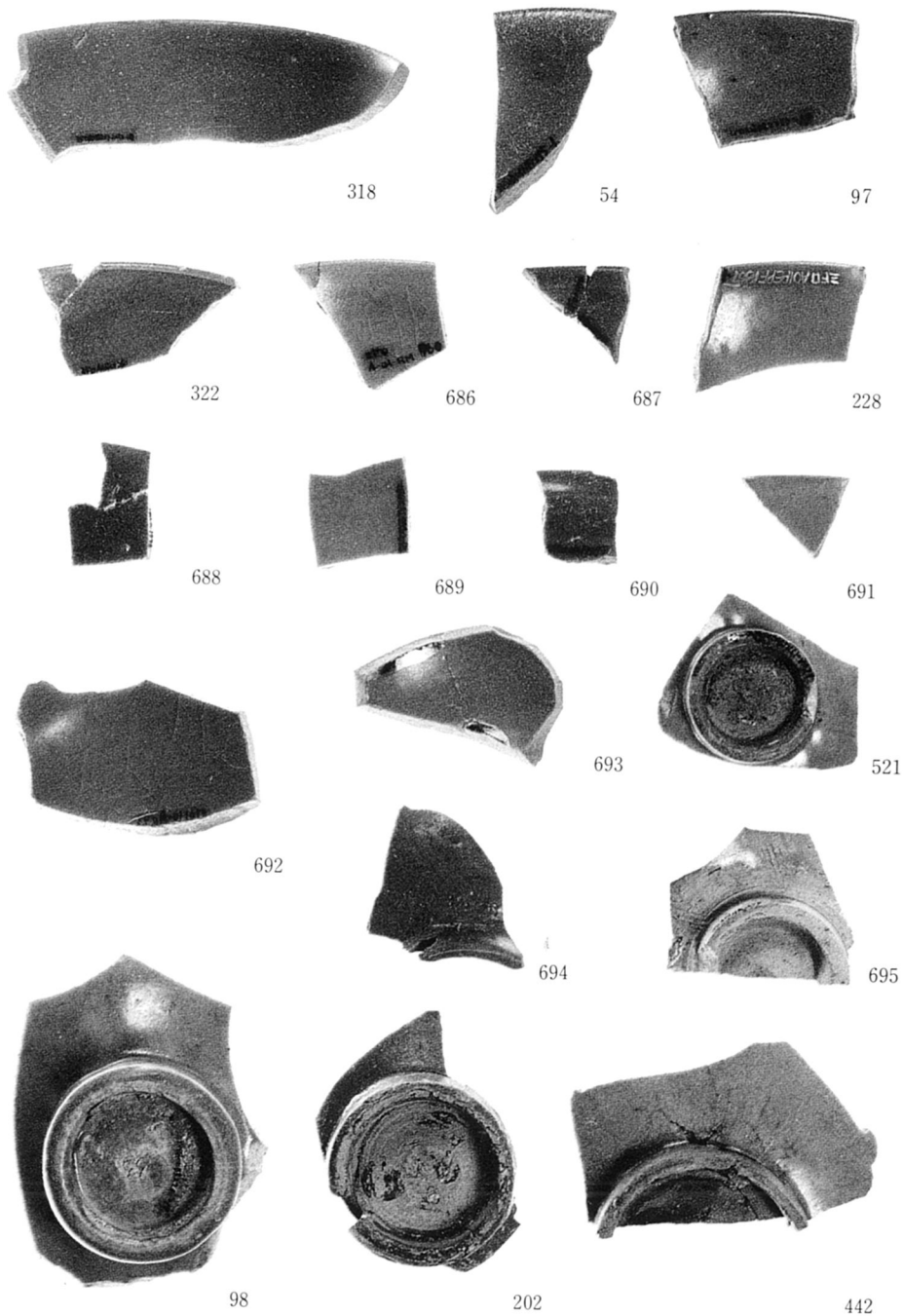




整地層、436-OW、474・700・883-00、867・889-0S、487-OL (a) (d) (e)、包含層出土遺物(白磁・裏)



(465・822-OW、342・383・466・474・489・582・881・883・892 B  
・941-OO、866-OS、487-OL (a) (c) (d) 出土遺物(青磁・表)



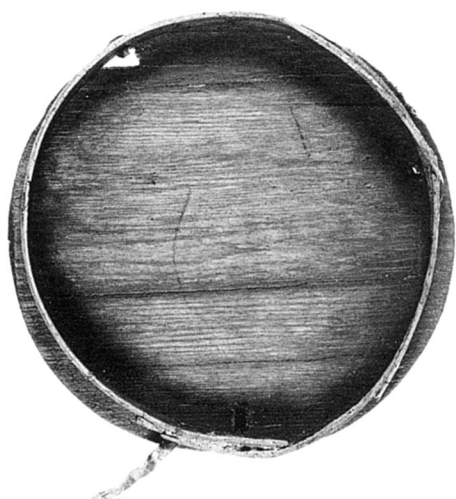
465・822-OW、342・383・466・474・489・582・881・883・892 B  
・941-OO、866-OS、487-OL (a) (c) (d)出土遺物(青磁・裏)



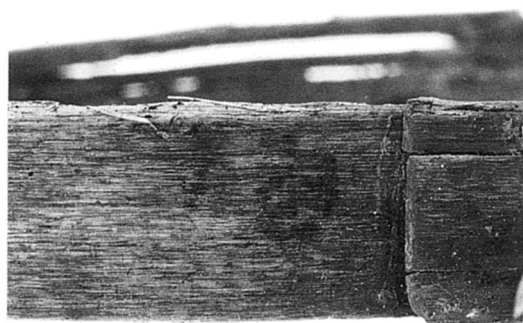
60



76



77



58



696

(財)大阪府埋蔵文化財協会調査報告書 第13輯

都市計画道路磯之上山直線建設に伴う

# 箕 土 路 遺 跡

—発掘調査報告書—

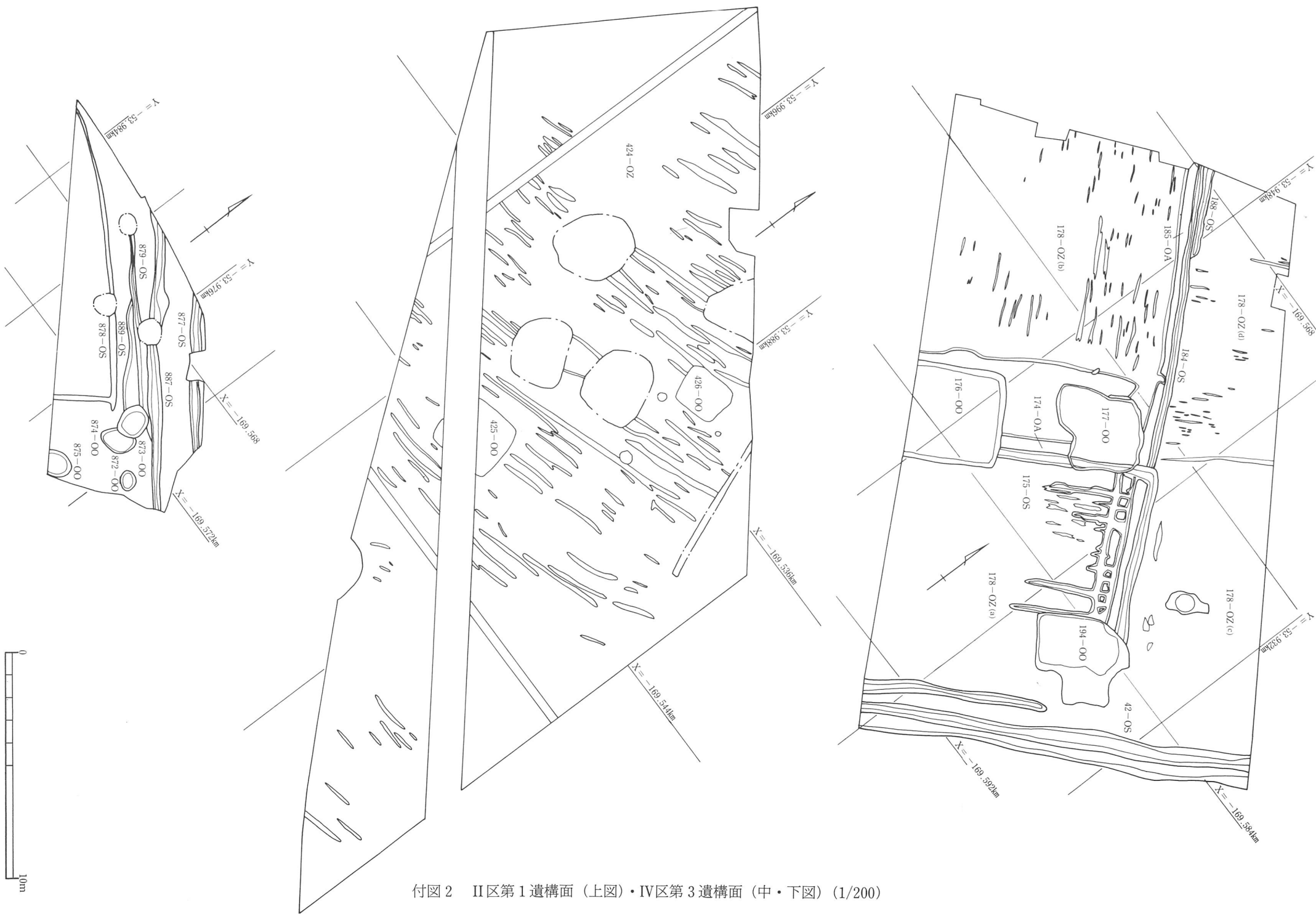
昭和62年 3 月31日発行

編集・発行 財団法人 大阪府埋蔵文化財協会

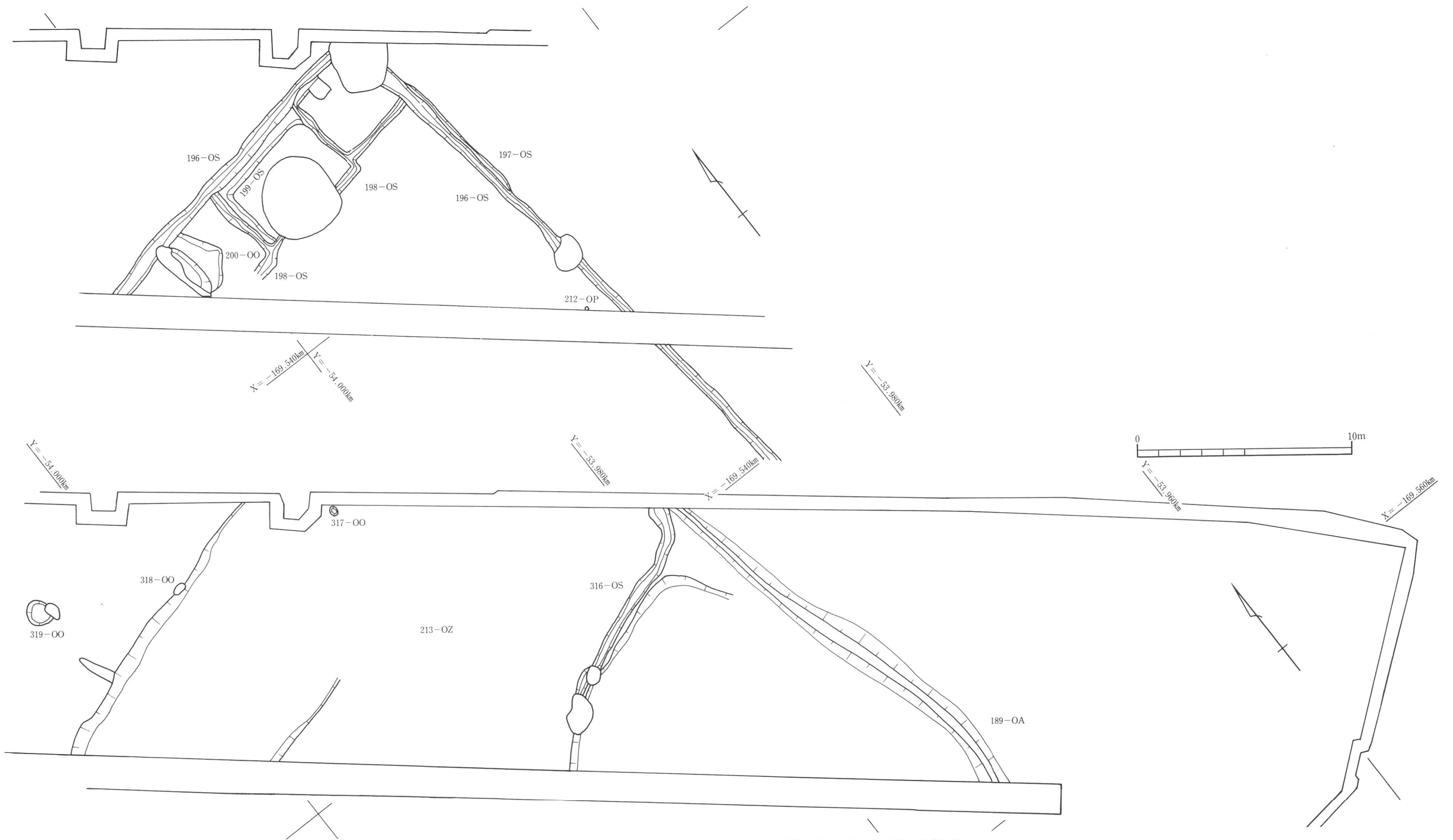
大阪市東区谷町2丁目36番地大手前ウサミビル

印 刷 川西軽印刷株式会社

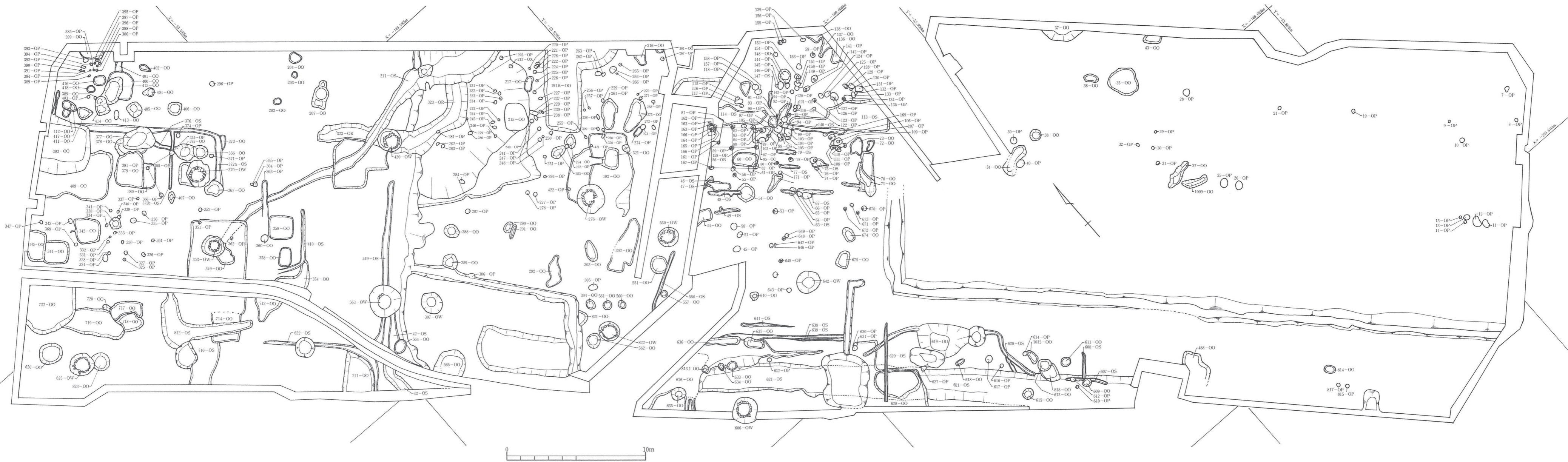




付図2 II区第1遺構面(上図)・IV区第3遺構面(中・下図)(1/200)

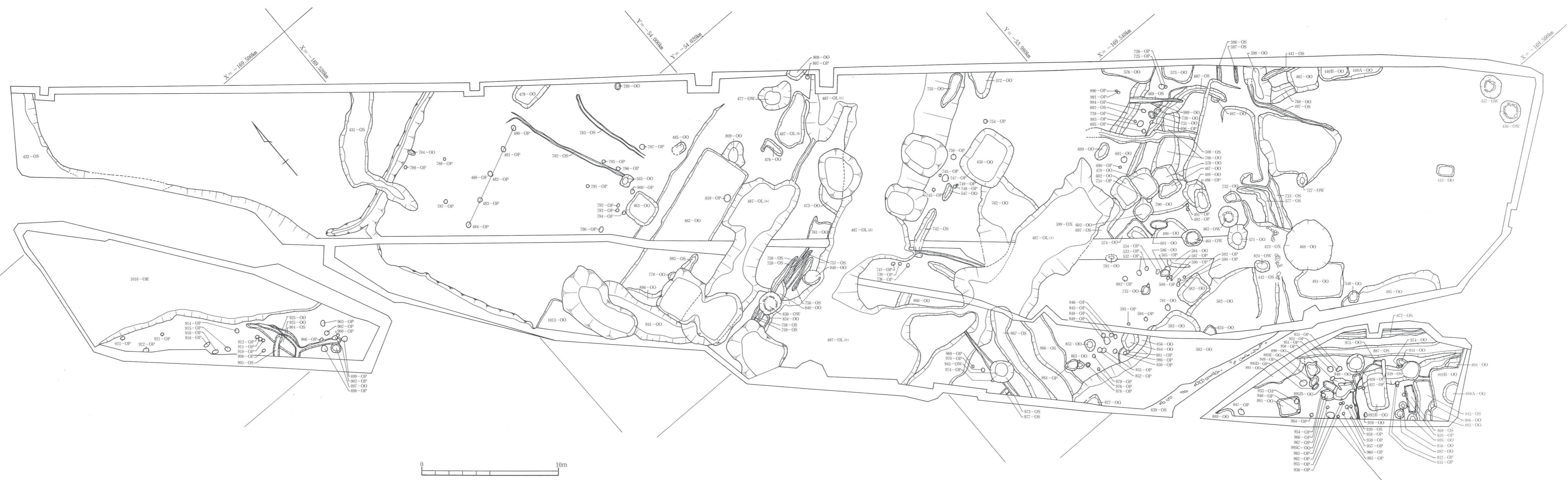


付図1 III区第1遺構面全体図(上図)・第2遺構面全体図(下図)(1/200)

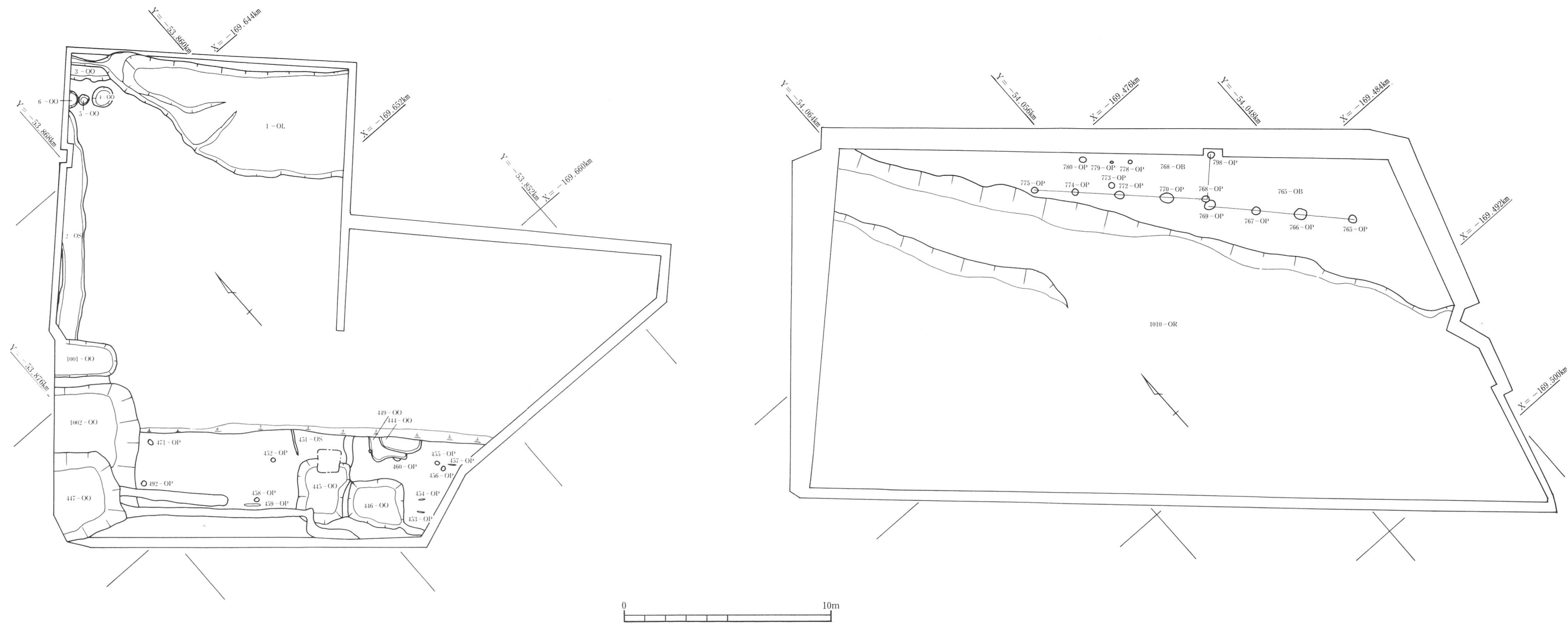


付图3 II区第2遺構面全体图 (1/200)





付图4 III区第4遺構面全体图 (1/200)



付図5 I区第1遺構面全体図(左図)・IV区第1遺構面全体図(右図)(1/200)

