



1 3号窯(3-OK)窯壁



2 3号窯(3-OK) C-C'断面



1 3号窯(3-OK) 最終床面検出状況



2 3号窯(3-OK) 床面下ピットと154,155-00



1 154-00 土層断面 (西から)



2 155-00 土層断面 (西から)



305



306



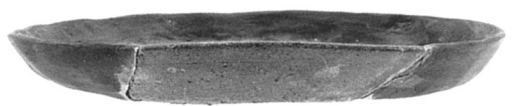
313



327



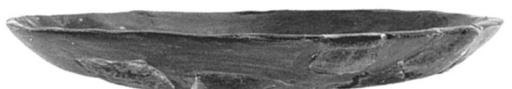
321



316



318



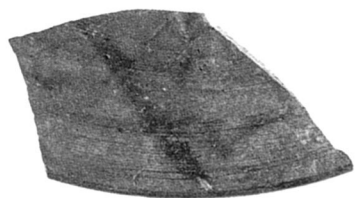
314



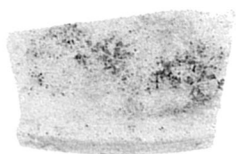
325



322



307



430



309



308



304

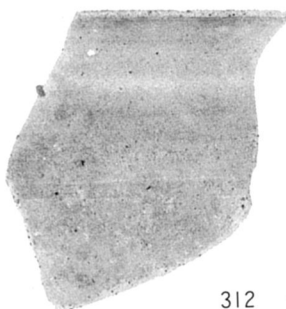


310

1 1号窯(1-OK)出土遺物



311



312



324



323



328

2 1号窯(1-OK)出土遺物



86



91



92



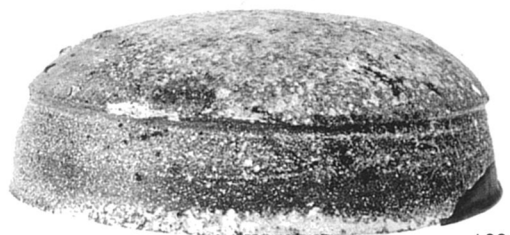
93



96



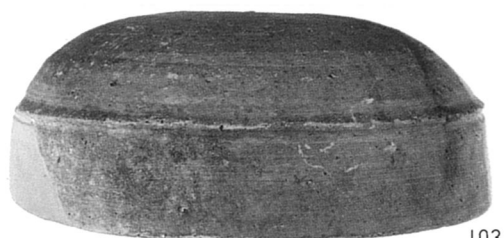
98



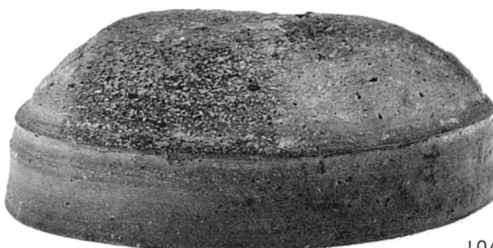
100



101



103

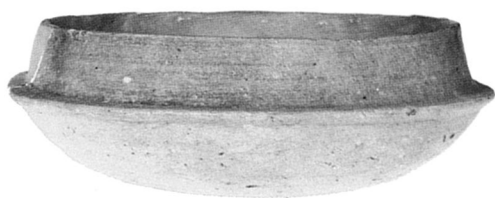


104

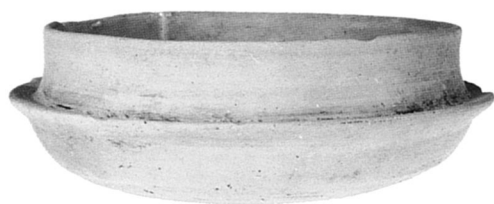
2号窯(2a・2b-OK)灰原出土遺物



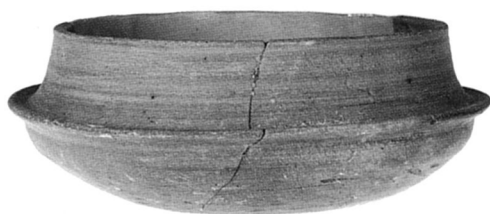
107



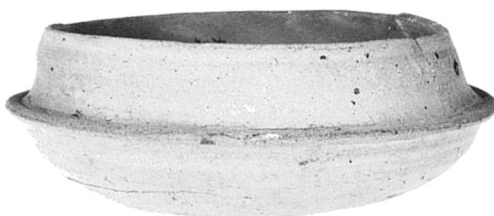
108



111



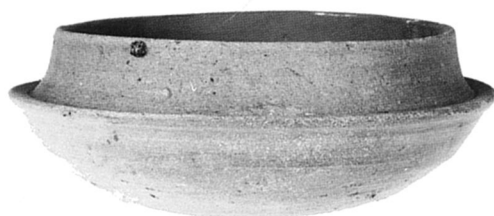
113



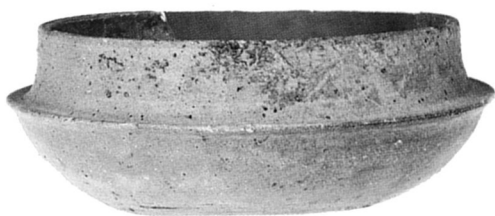
114



117



119



120



123



125



126



127



129



131



133



137



139



141

2号窯 (2a・2b-OK) 灰原出土遺物



143



144



145



149



150



152



158



161



169



171



172



162



163



164



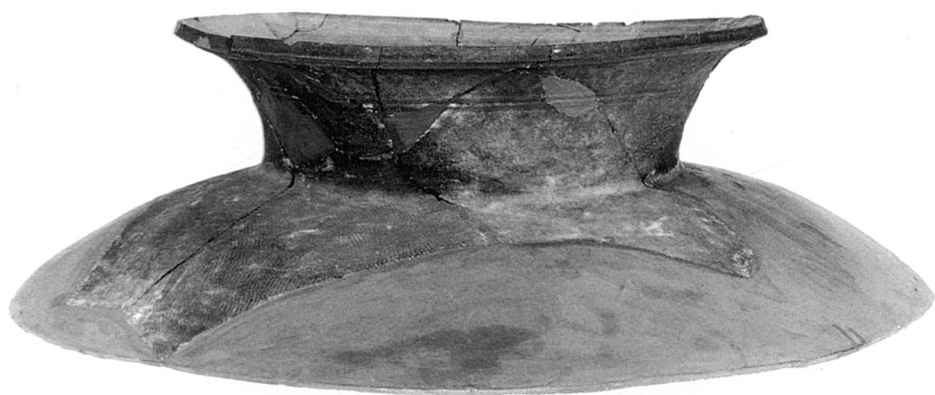
165



166



167

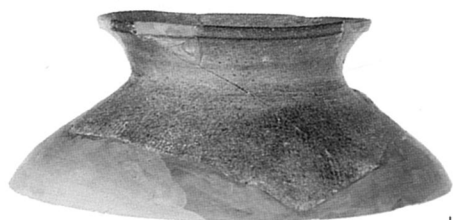


180

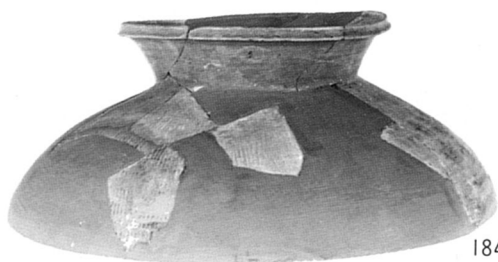


175

2号窯 (2a・2b-OK) 灰原出土遺物



182



184



188



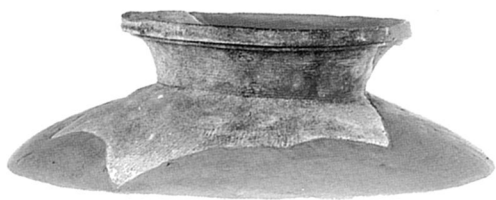
192



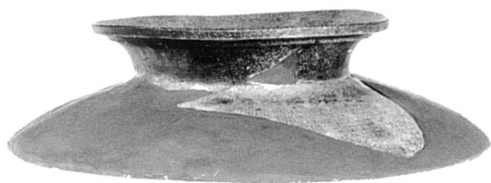
190



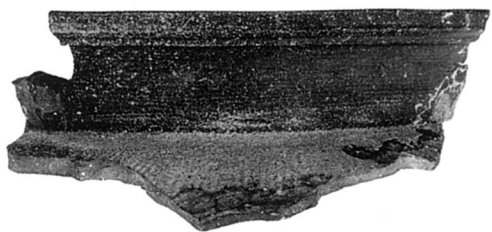
193



196



197



199



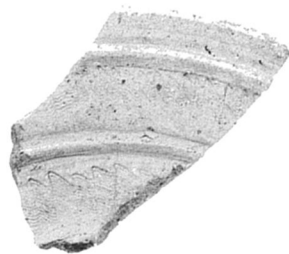
203



201



240



202



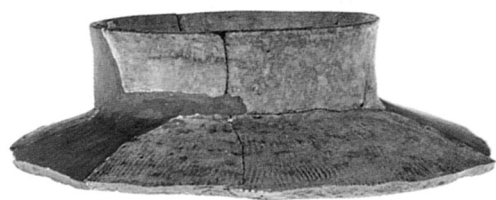
205



207



213



209



204



215



216



217



218



220

2号窯 (2a・2b-OK) 灰原出土遺物



221



222



223



224



228



229



232



239



231



236



233



238

2号窯 (2a・2b-OK) 灰原出土遺物



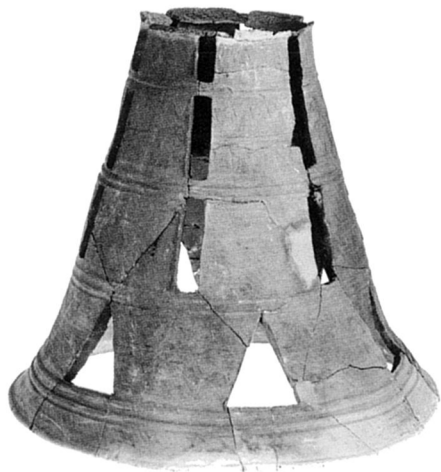
241



242



244



245



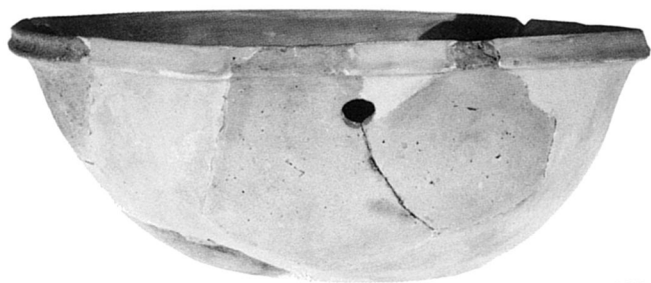
247



247



248



250



257



249



251



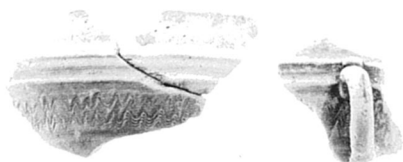
256



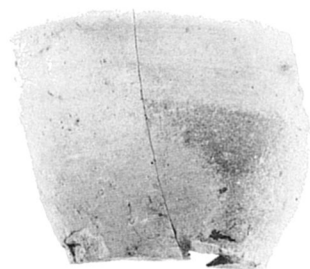
255



260



253



252



263



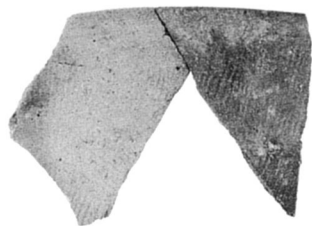
263



266



268



262



265



264



267

2号窯 (2a・2b-OK) 灰原出土遺物



269



270



271



500



501



S-10



C-1



273



275



276



278



280



282



284



287



290



291



292



293



294



295



299



302



303



428



429



426



427

1 428・429 3号窯(3-OK)灰原混入遺物 426・427遺構外出土遺物



S-12



S-13



S-15



S-14



S-11

2 B地区出土石器



調査地全景（空撮）



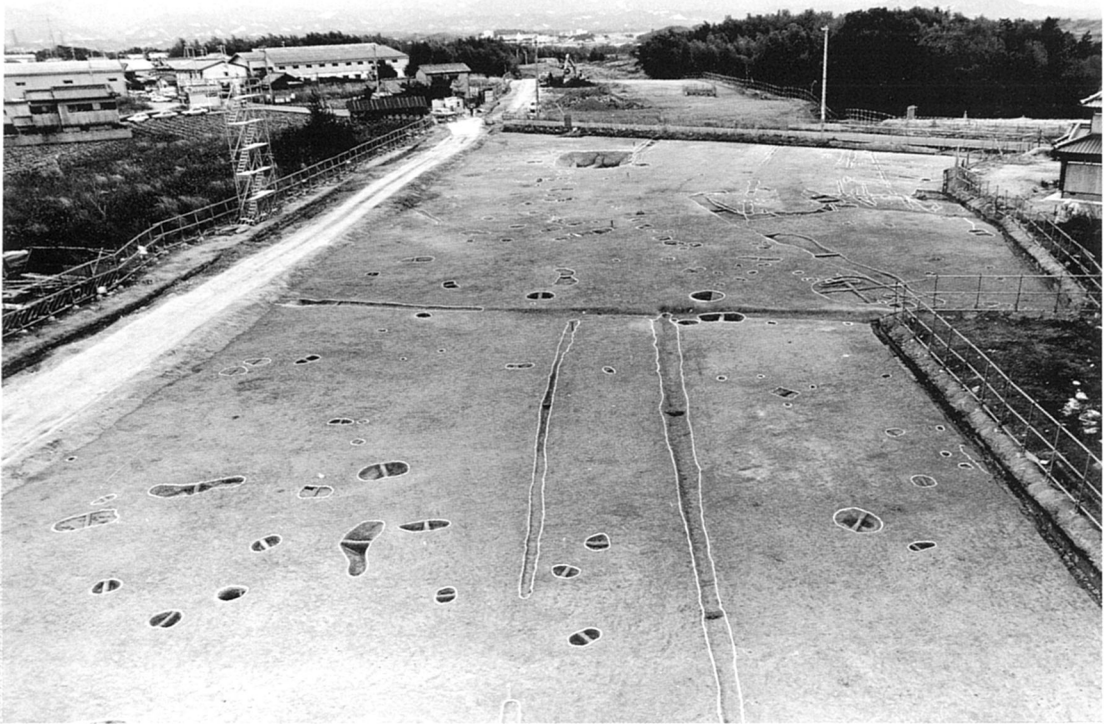
1 調査前全景（北から）



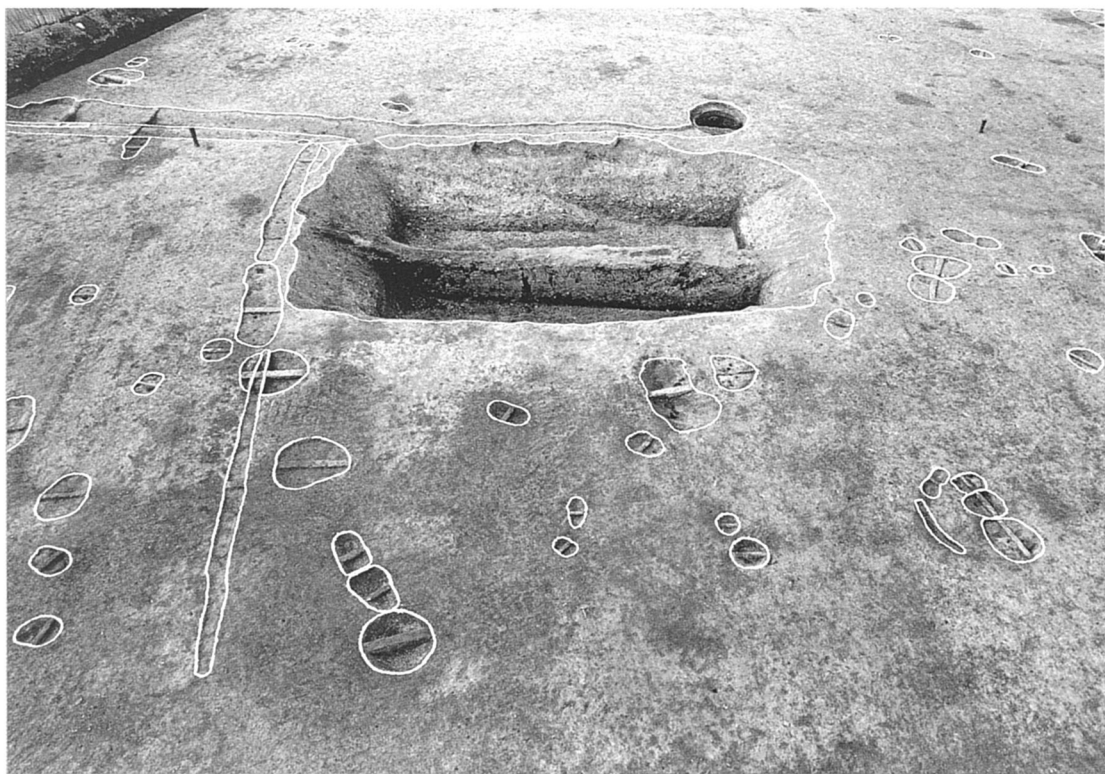
2 調査前全景（南から）



1 調査地全景 (北から)



2 調査地全景 (北から)



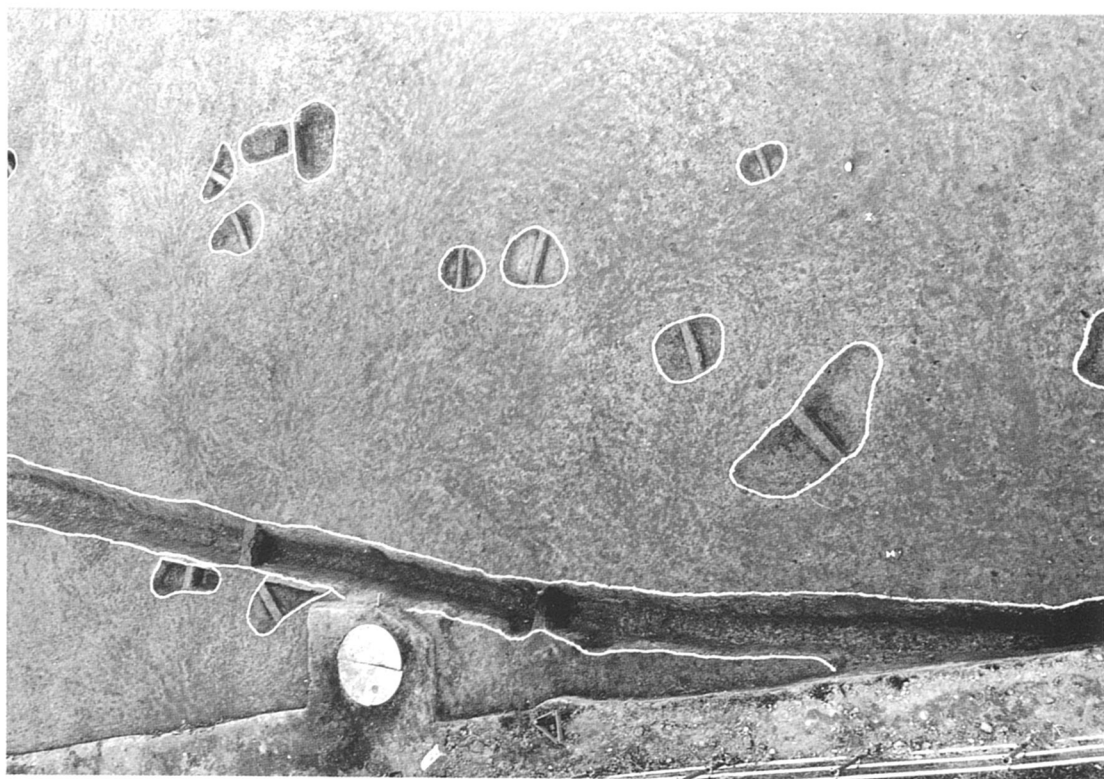
1 溜池211-OG周辺（東から）



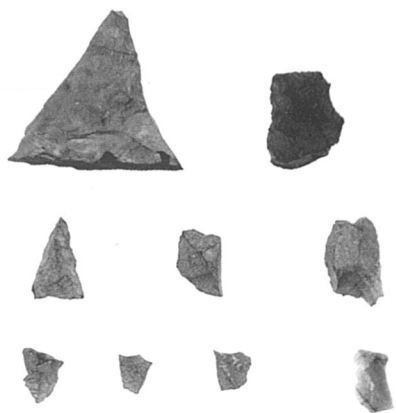
2 方形周溝状遺構1-0X（北から）



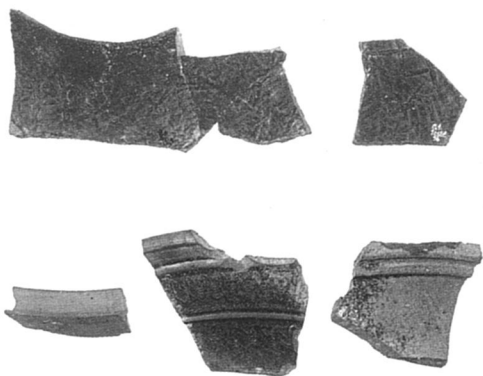
1 掘立柱建物210-OB (東から)



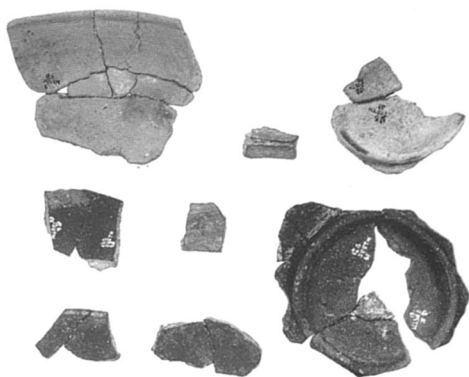
2 溝3-OS (北から)



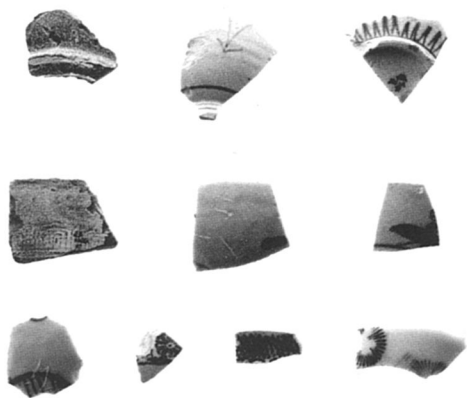
1 石器



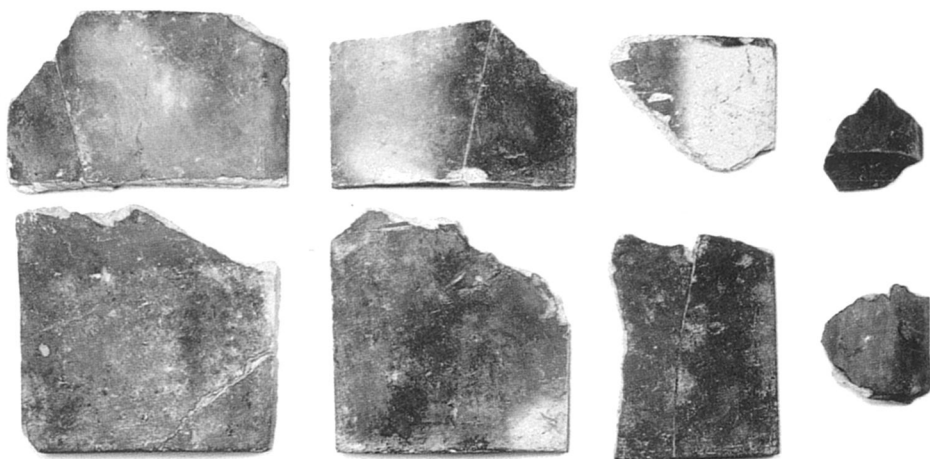
2 須恵器



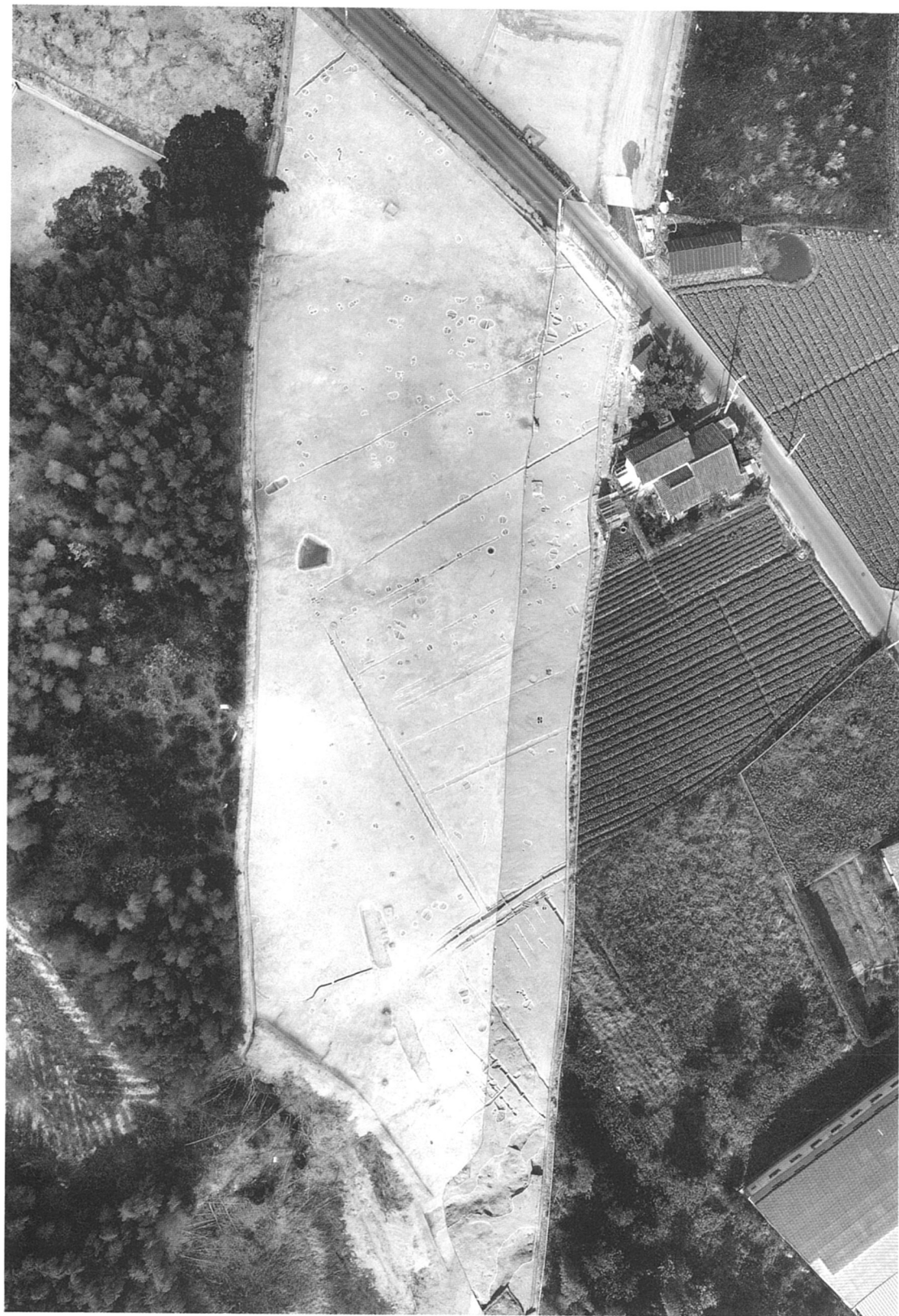
3 土師器・黒色土器



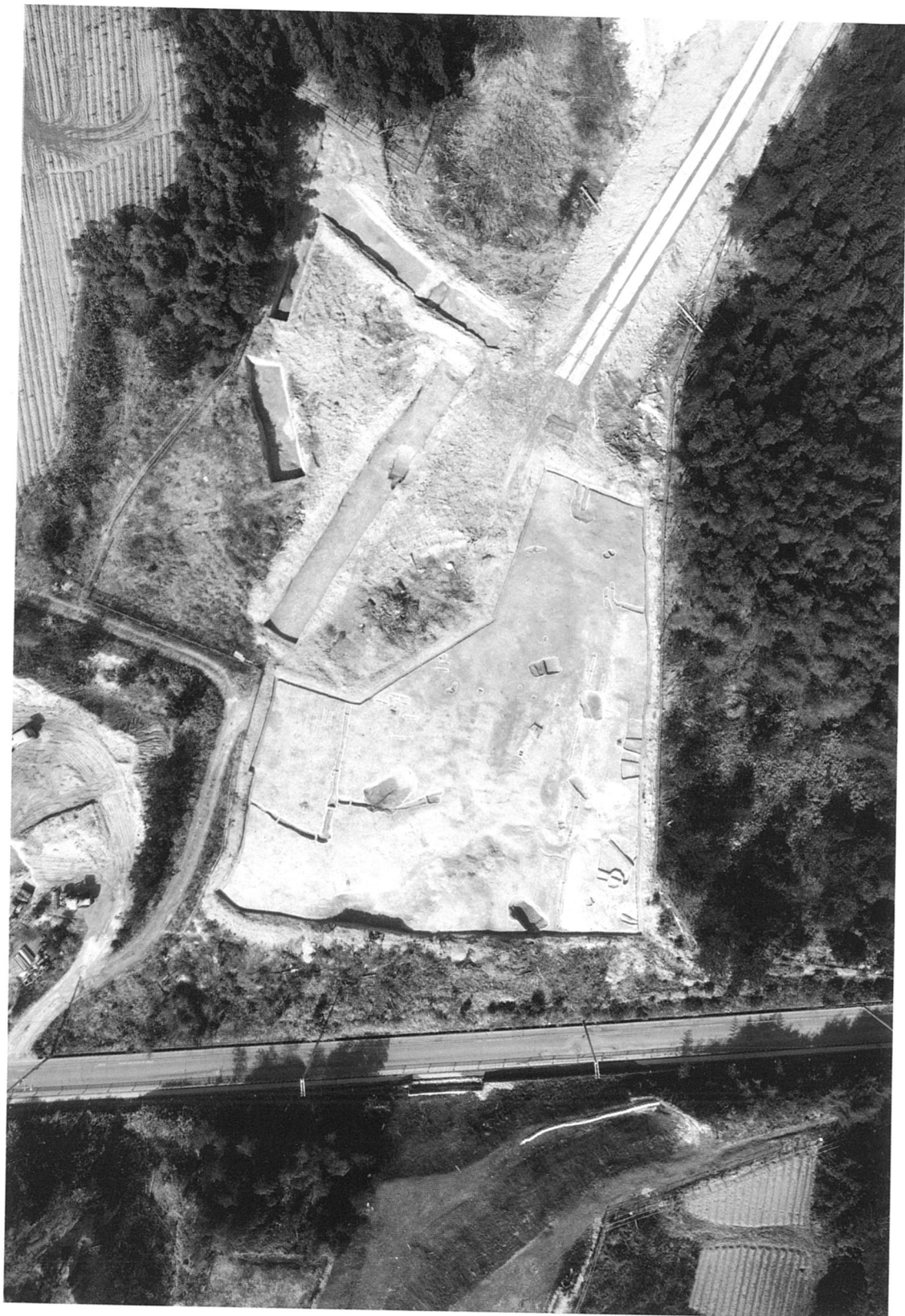
4 陶磁器



5 平瓦・丸瓦



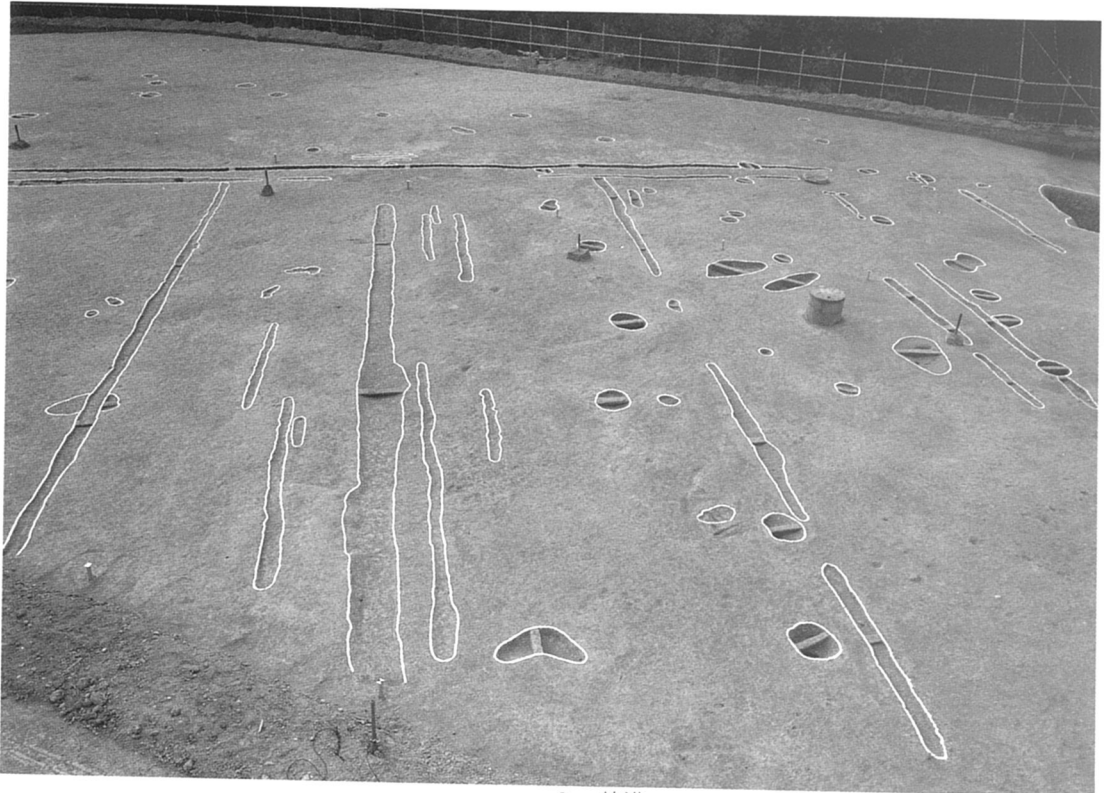
調査地池北側全景（空撮）



調査地池南側全景（空撮）



1 池北側全景



2 畝溝

(財)大阪府埋蔵文化財協会調査報告書 第12輯

近畿自動車道和歌山線建設に伴う

信 太 山 遺 跡

—発掘調査報告書—

昭和62年 3 月31日発行

編集・発行 財団法人 大阪府埋蔵文化財協会

大阪市東区谷町2丁目36番地大手前ウツミビル

印 刷 川西軽印刷株式会社



