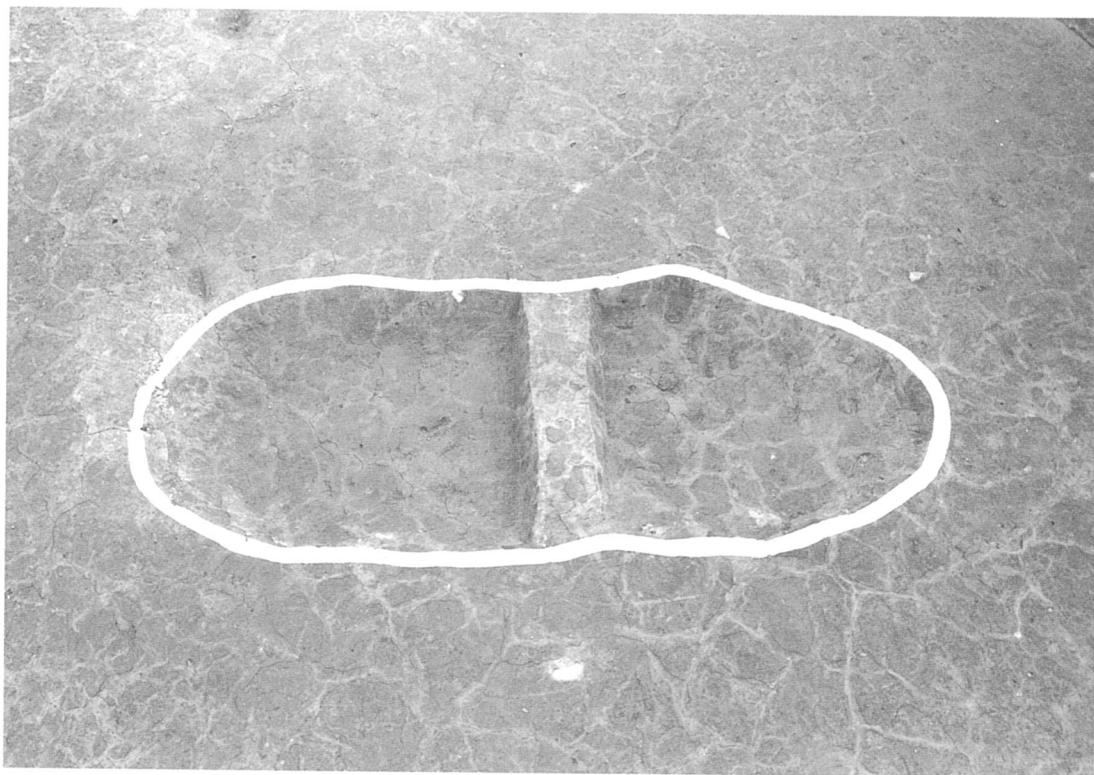


C区 394-OX 断面



C区 387-OX 全景



C区 黄色粘土 I 層 石棒出土状況



C区 黄色粘土 I 層 縄文土器出土状況



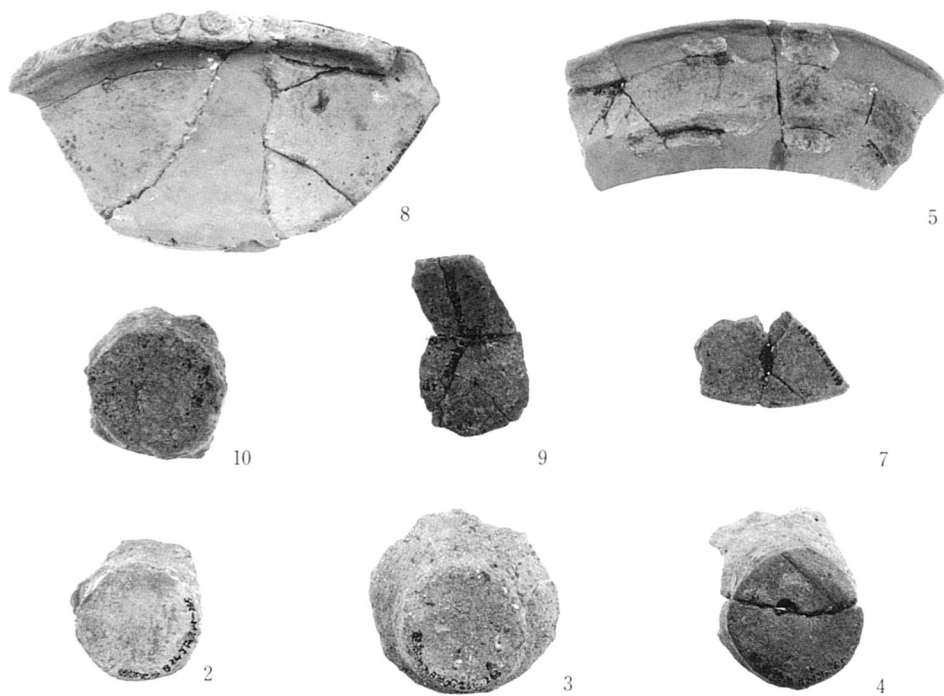
C区 411-OR 全景(西より)



C区 412-OR 全景(西南より)



A-1区 第4層出土石斧未製品



A-1区 240-OX 出土土器



6



12

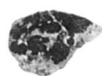


1



1

A-1区 240-OX・207-OP 出土土器 (上下左: 240-OX、下右: 207-OP)



1



2



3



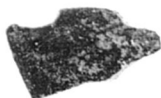
9



4



5



6



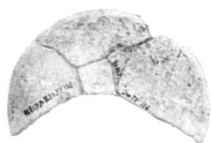
7



8



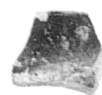
4



5



1

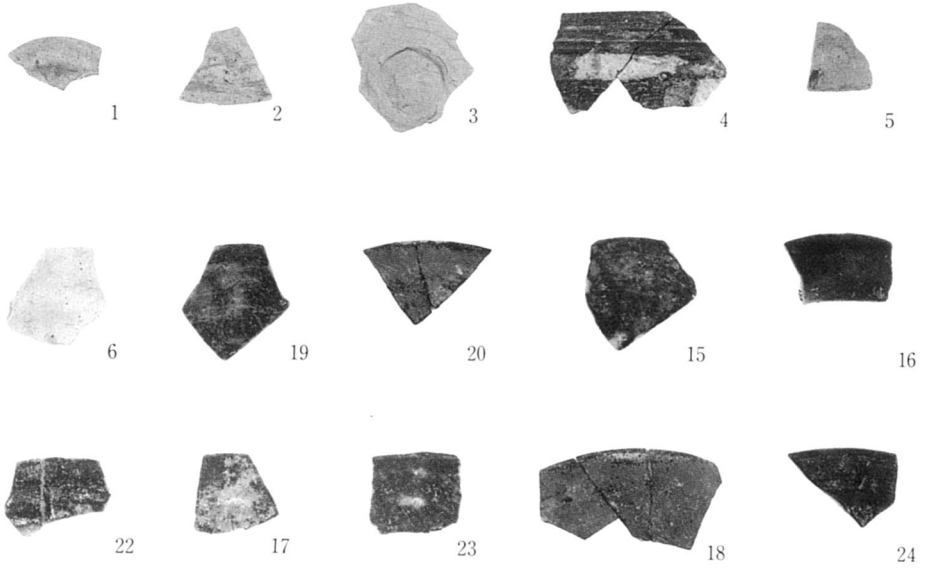


2

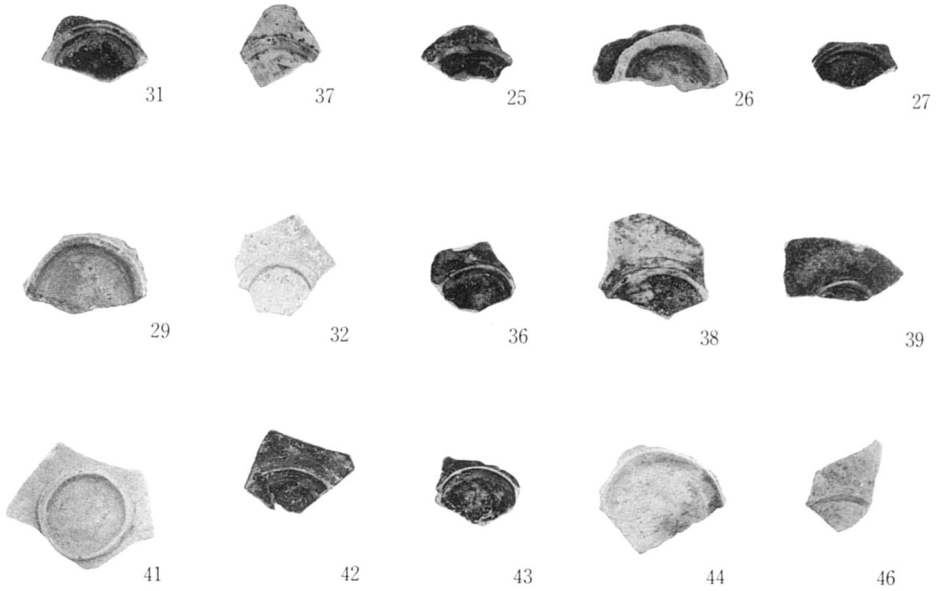


3

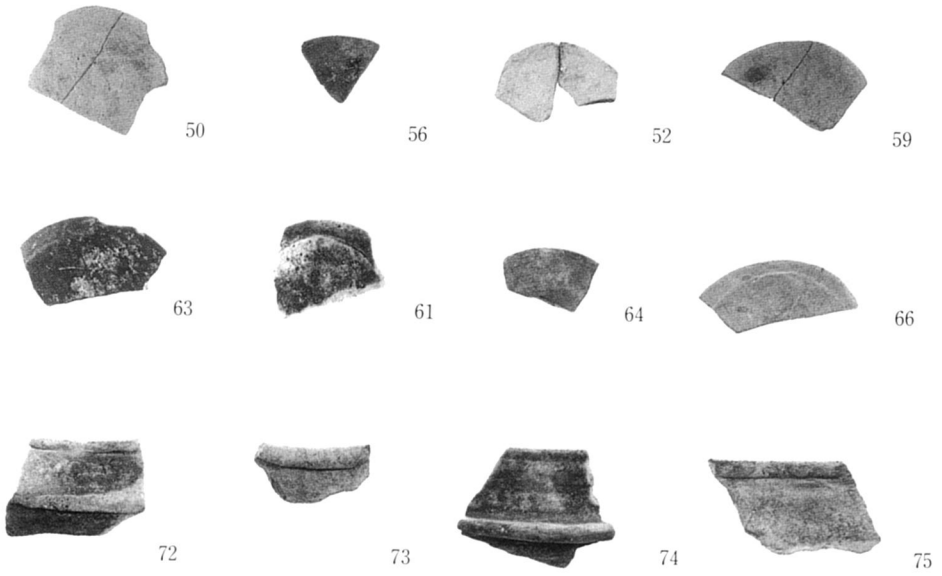
A-1区 中世小溝群出土土器(上、中: 第2層上面、下: 第3層上面)



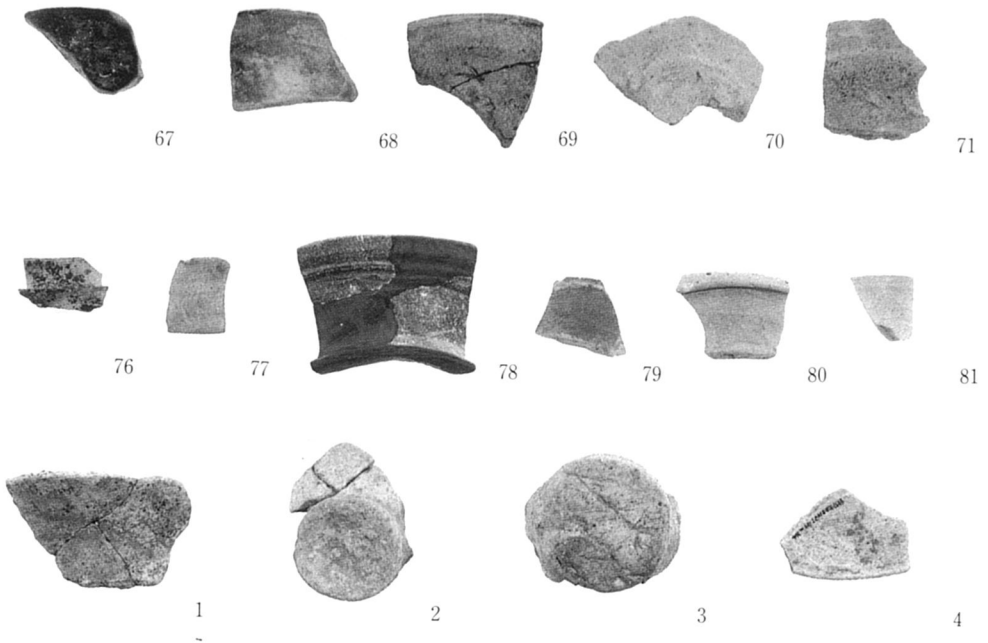
A-1区 第1・2層出土土器(上:第1層、中・下:第2層)



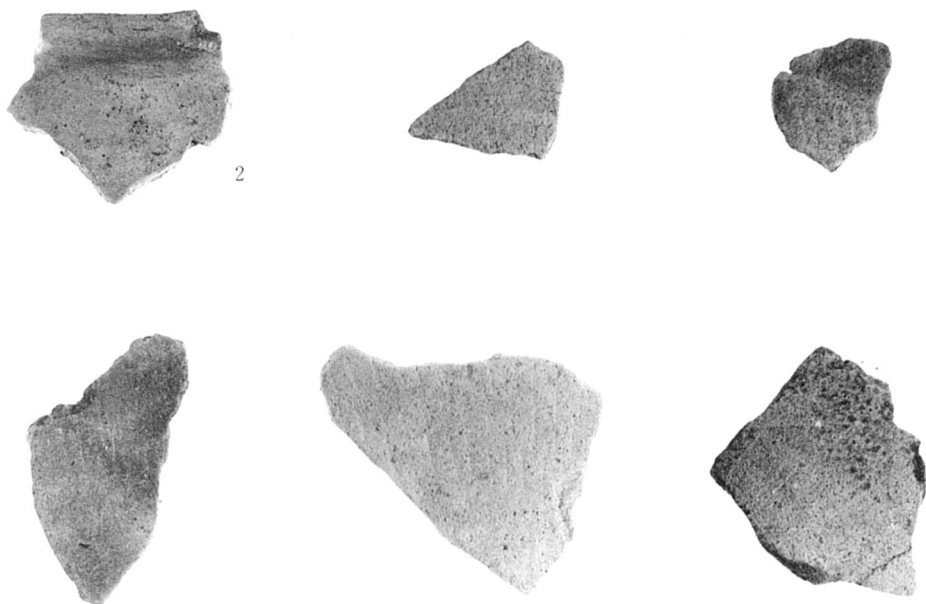
A-1区 第2層出土土器



A-1区 第2層出土土器



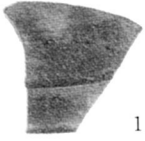
A-1区 第2・3層出土土器(上・中:第2層、下:第3層)



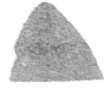
A-2区 303-00 出土土器



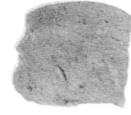
A-2区 290・299-00 出土土器 (左中:290-00、右:299-00)



1



2



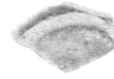
3



4



5



6



7



8



9

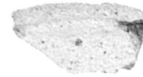
A-3区 包含層・砂礫層内出土土器



10



11



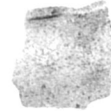
12



13



14



15



16



17



18

A-3区 包含層内出土土器



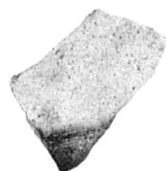
1



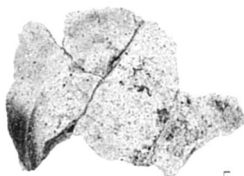
2



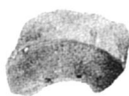
3



4



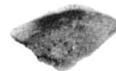
5



6



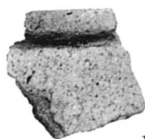
7



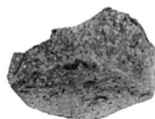
8



9



10



11

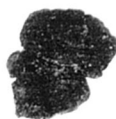


12

A-3区 遺構面直上・土城内出土土器



13



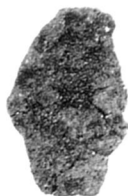
14



15



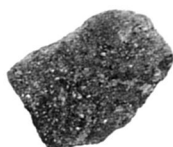
16



17



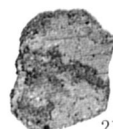
18



19



20



21

A-3・4区 335-OR・砂礫層内出土土器



1



2



3



4



5



6



7



8



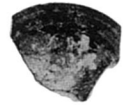
9



10



11



12

A-4区 包含層内出土土器



13



14



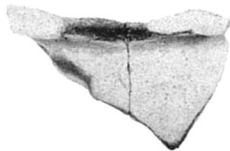
15



16



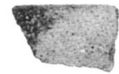
17



18



19



20



21



22

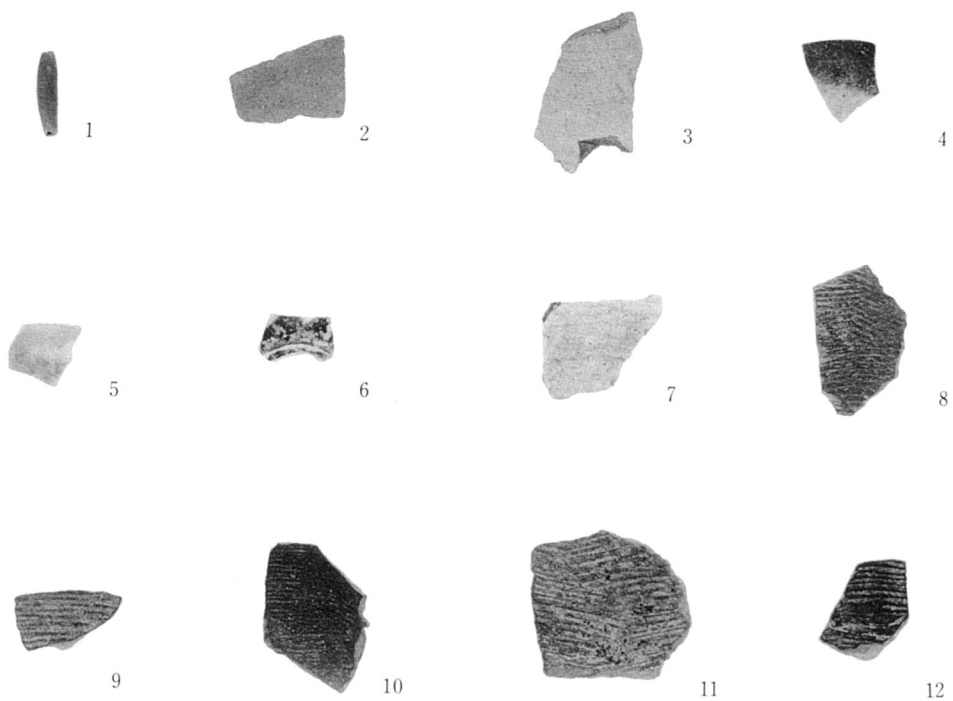


23

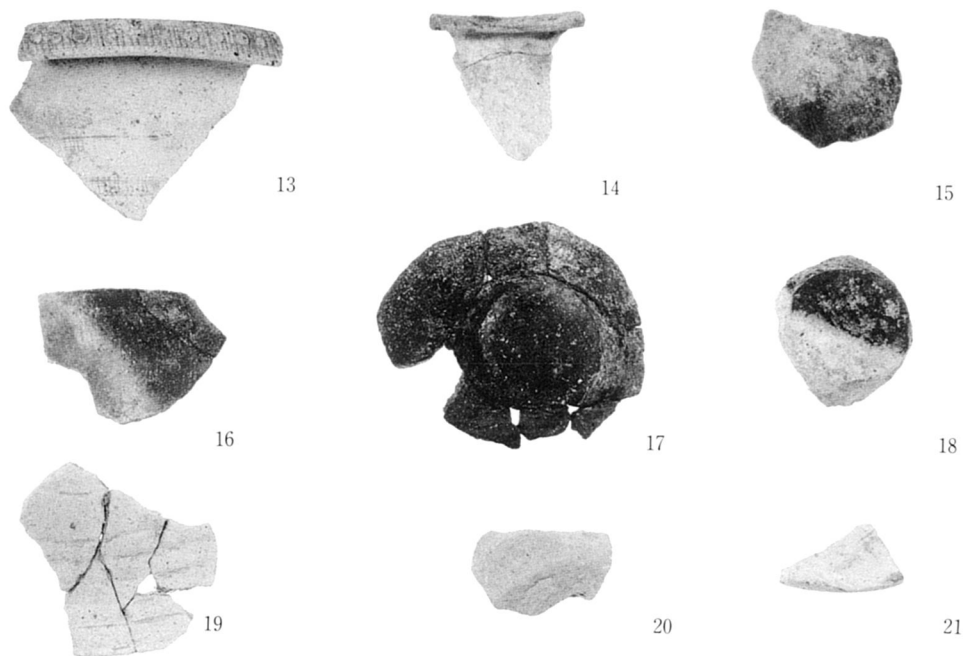


24

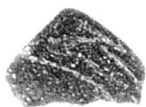
A-4区 砂礫層内・遺構面直上出土土器



A-4区 砂礫層内・遺構面直上出土土器



A-4区 土壌内出土土器



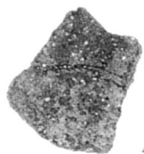
1



2



3



4

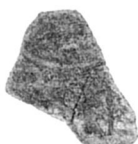


5

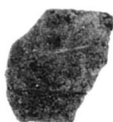


6

A-4区 611-00内出土土器



7



9



10



11

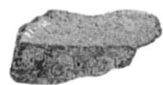


12

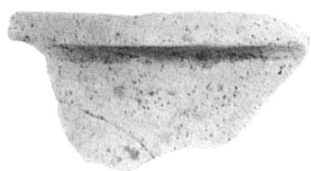
A-4区 611-00内出土土器



A-4区 611-00内出土土器



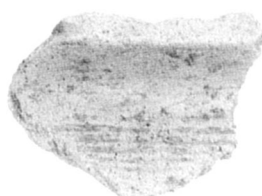
A-4区 611-00内出土土器



1



2



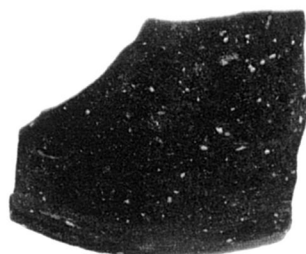
3



4



5

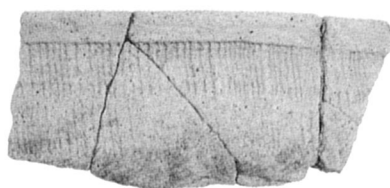


6

A-4区 611-OO内出土土器



7



8



9

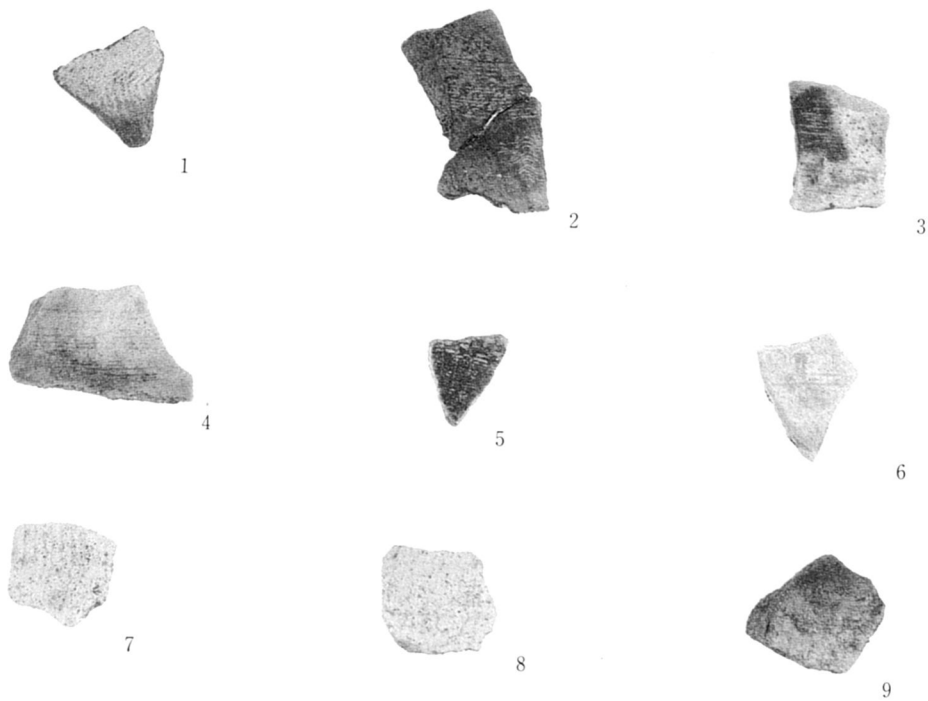


10

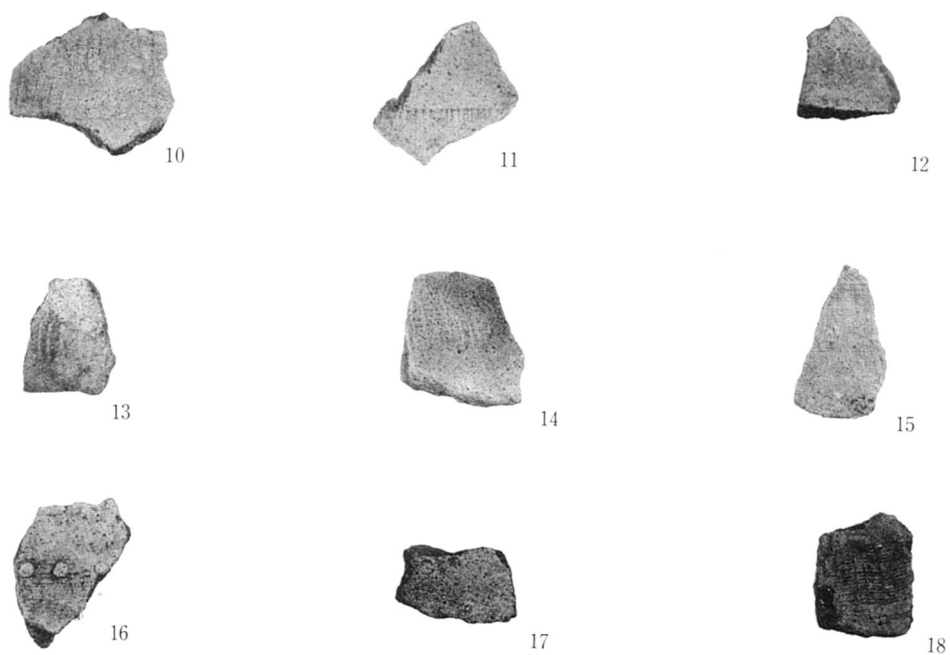


11

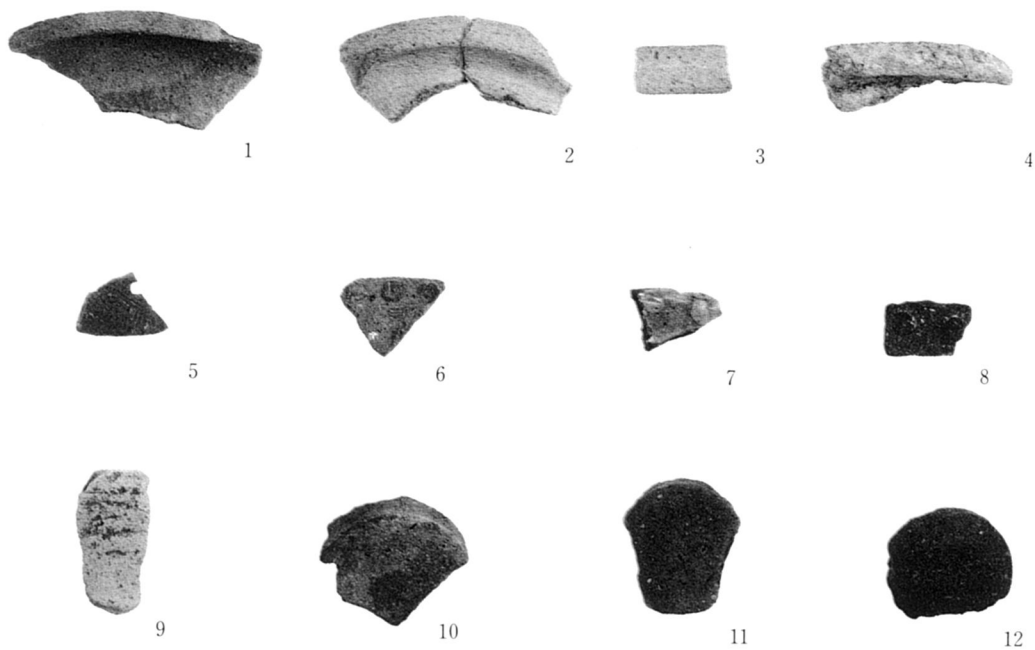
A-4区 611-OO内出土土器



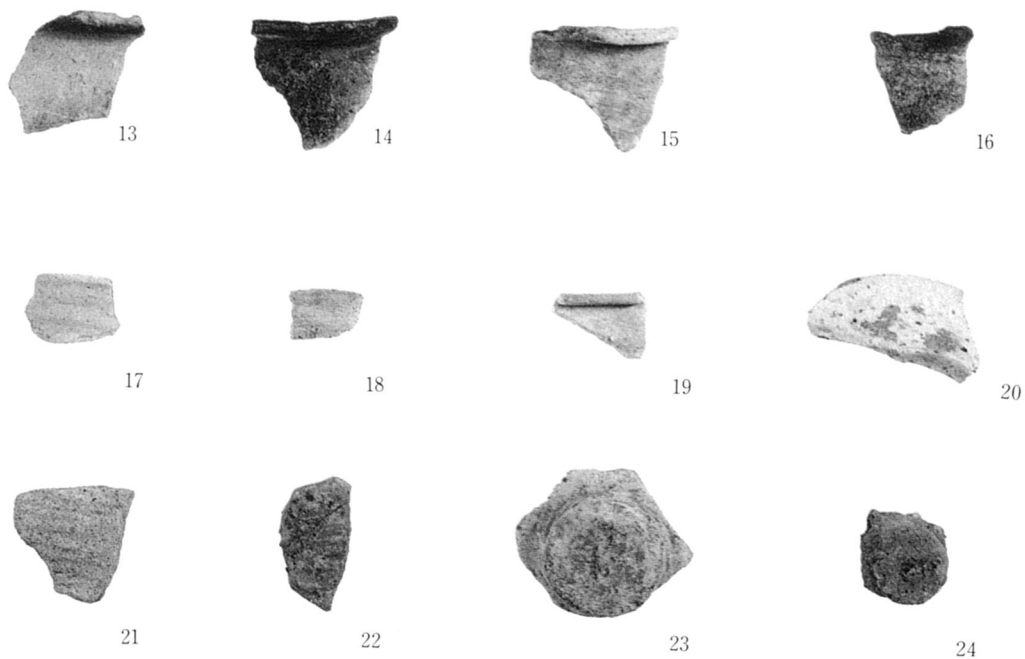
A-4区 611-OO 内出土土器



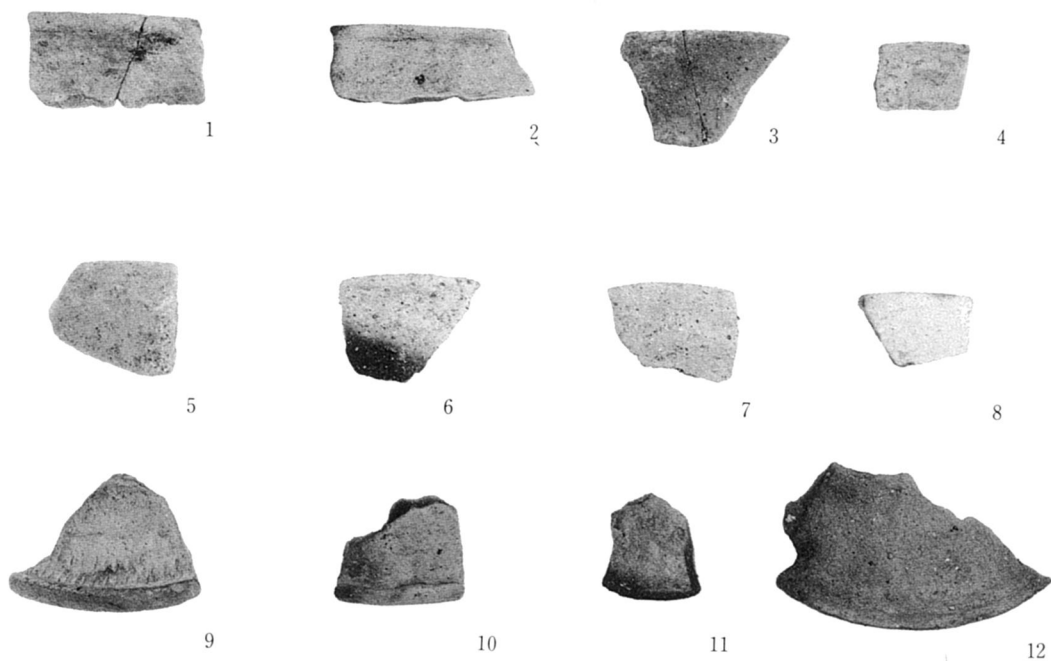
A-4区 611-OO 内出土土器



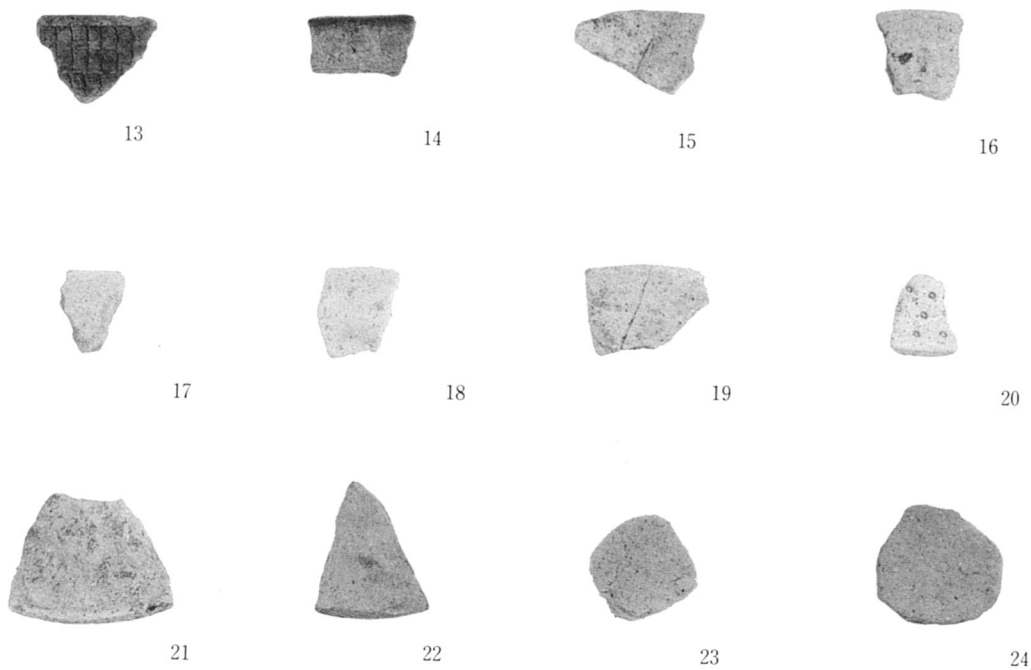
A-4区 611-00内出土土器



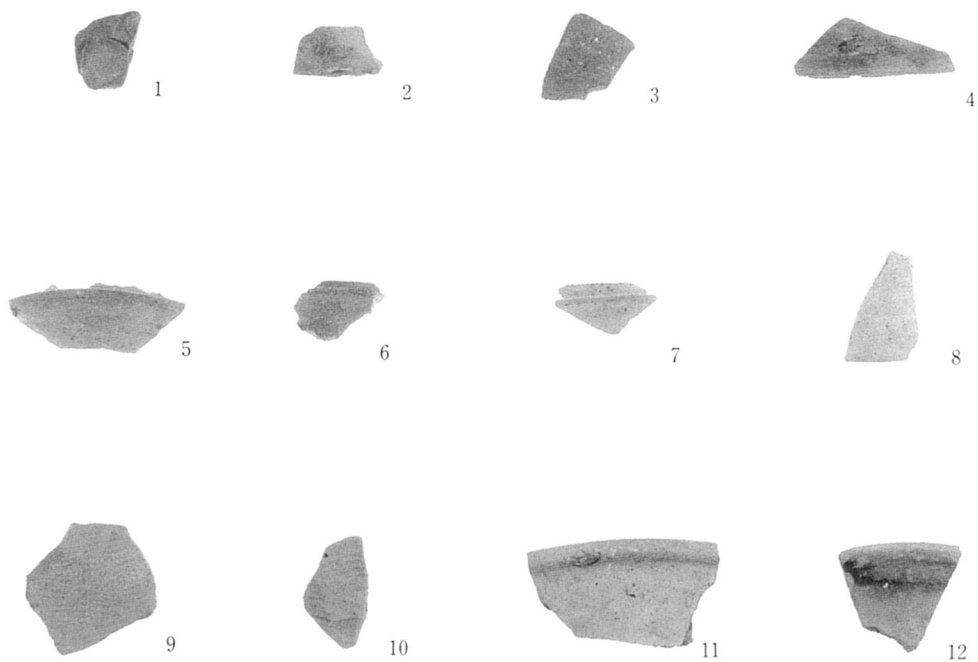
A-4区 611-00内出土土器



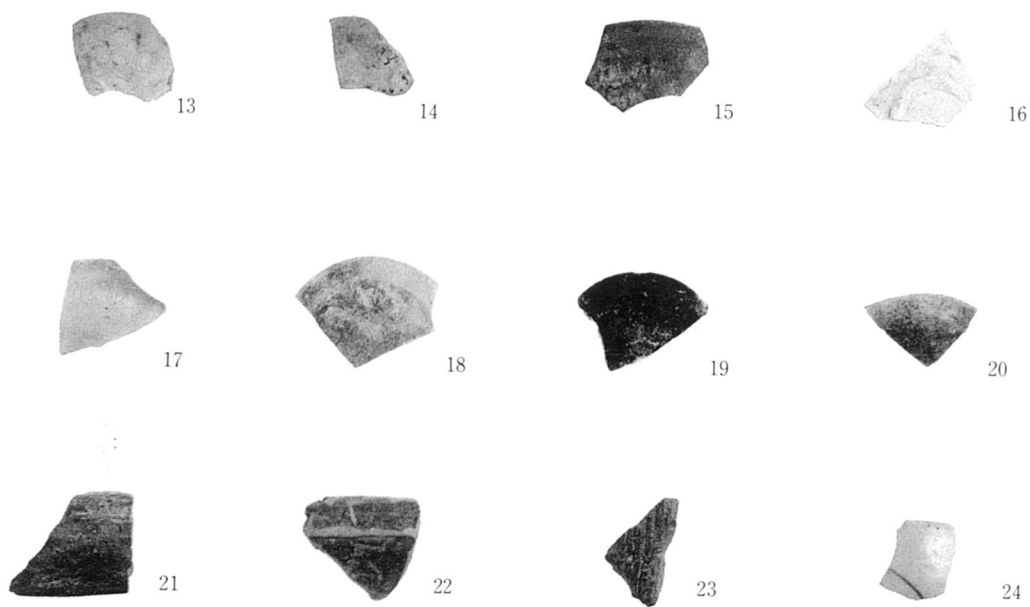
A-4区 611-00内出土土器



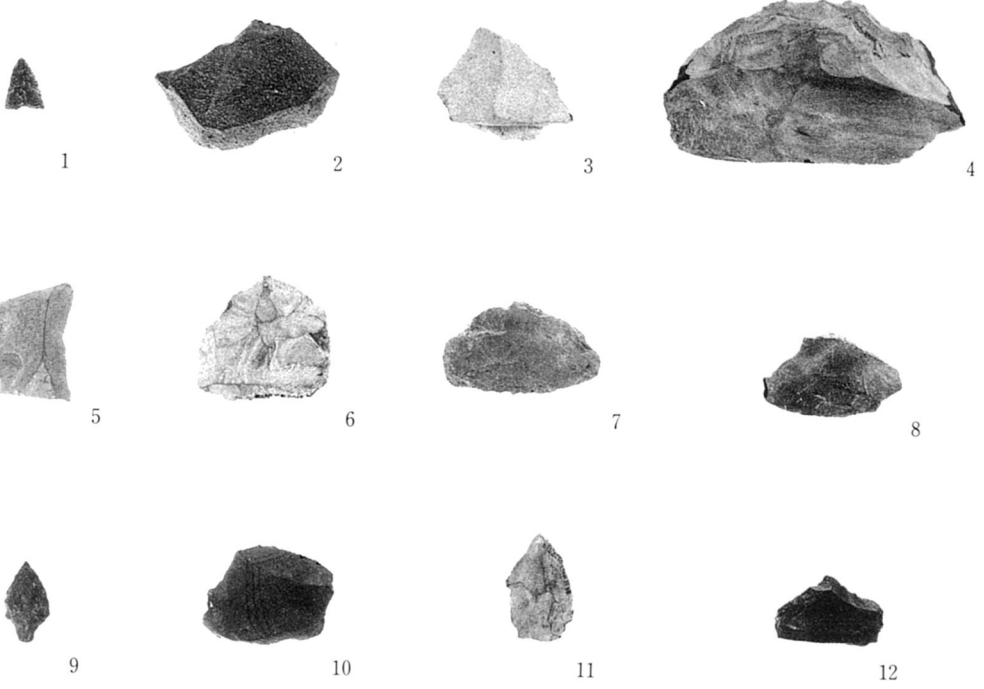
A-4区 611-00内出土土器



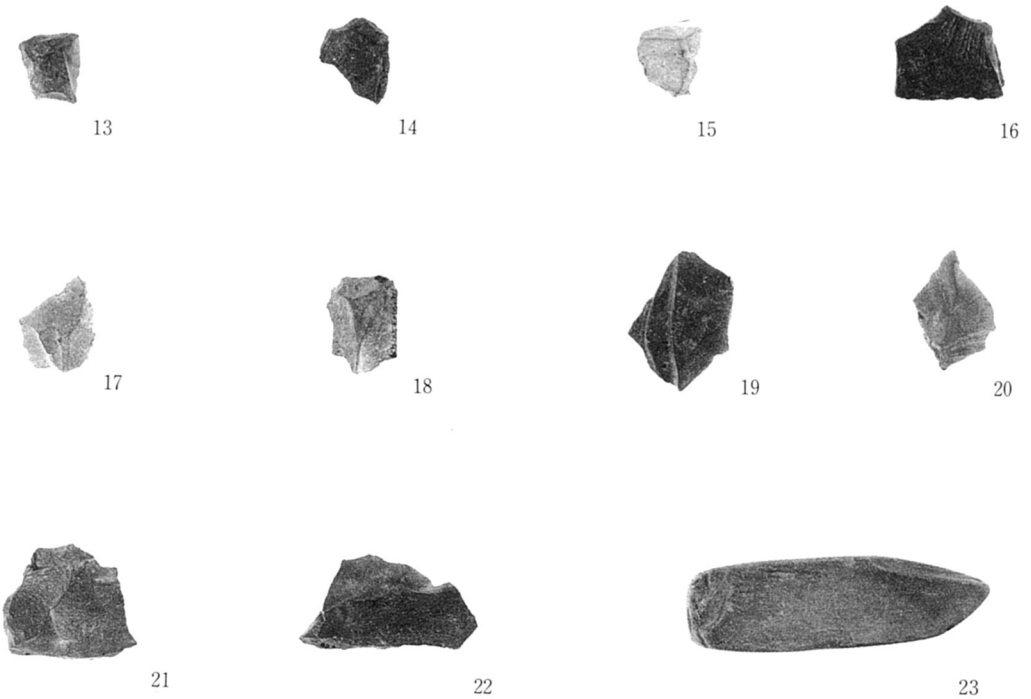
A-4区 611-00 内出土土器



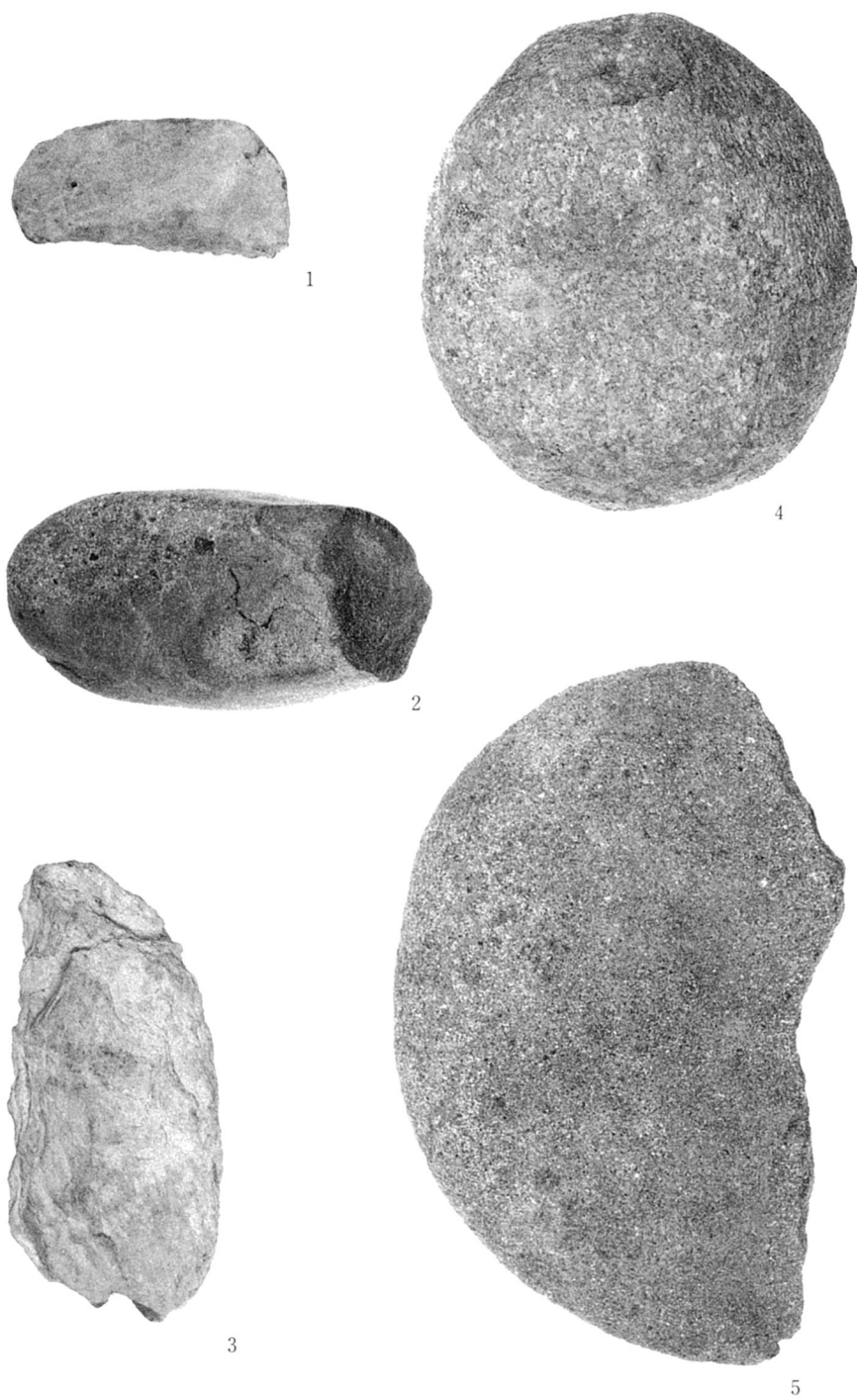
A-4区 611-00 内出土土器



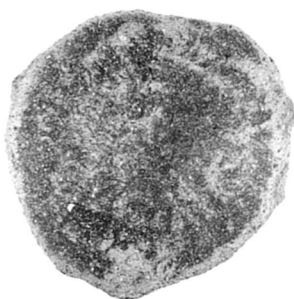
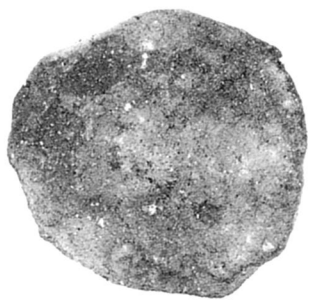
A-3・4区 砂礫層内・遺構面直上・335-OR内出土石器



A-4区 611-OO内出土石器



A-4区 砂礫層内・遺構面直上・土壌内出土石器および石製品



78-3



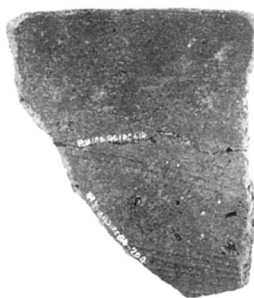
78-2a



78-2



78-1



80-2



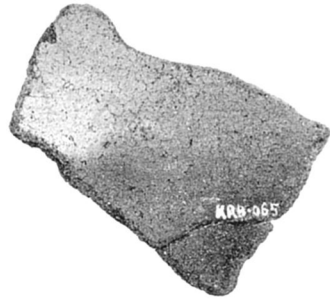
80-4



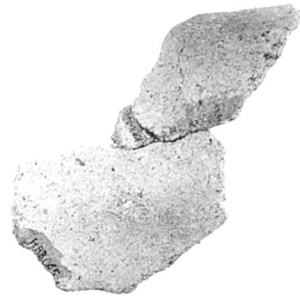
80-3



80-1



82-19



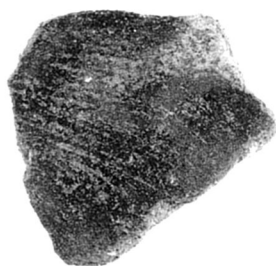
82-20



81-5



81-8



81-14



81-12



81-10



81-7



81-11



81-13



81-15



81-16



82-18



82-17



83-13



83-12



83-6



83-5

B区 589-OR 3層出土土器(上2段)・1~2層出土土器(下2段)



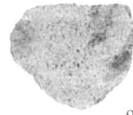
83-9



83-2



83-17



83-10



83-9



83-14



83-18



83-3



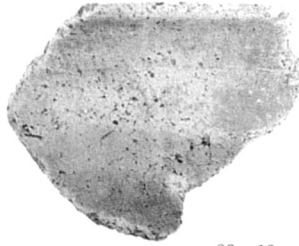
83-22



83-15



83-7



83-19



83-1

B区 589-OR 1~2層出土土器



83-12



83-10



87-3



87-2



87-15

B区 546-OS 出土土器



87-9



90-18



87-4



87-13



87-8



87-6



87-1



90-10

B区 546-OS 出土土器 (87-1、4、6、8、9、13) • 547-OS 出土土器 (90-10、18)



91-4



91-1a



91-1



91-5



91-3



91-2



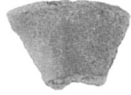
90-2



90-16



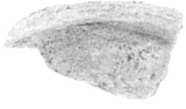
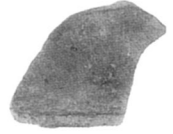
90-12



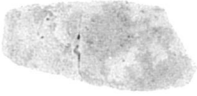
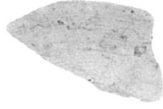
90-3



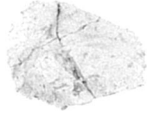
90-7



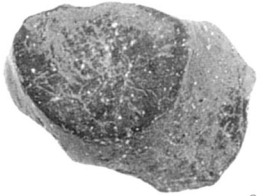
90-9



90-15



90-11



90-14



90-13



90-5

B区 547-OS 出土土器



96-7



96-3



96-1



96-2



96-5

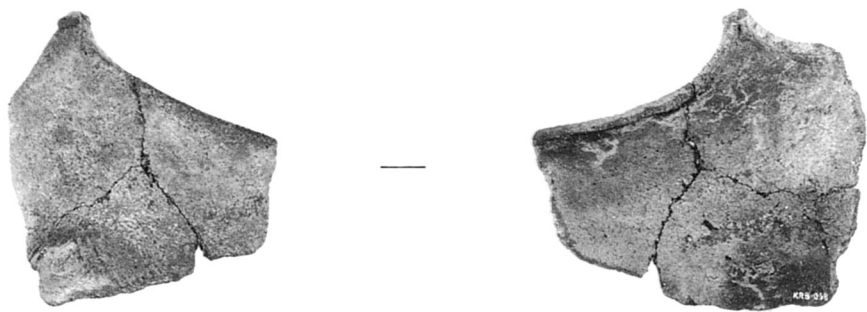


96-4



96-6

C区 黄色粘土 I~III层出土土器



103-1



103-4

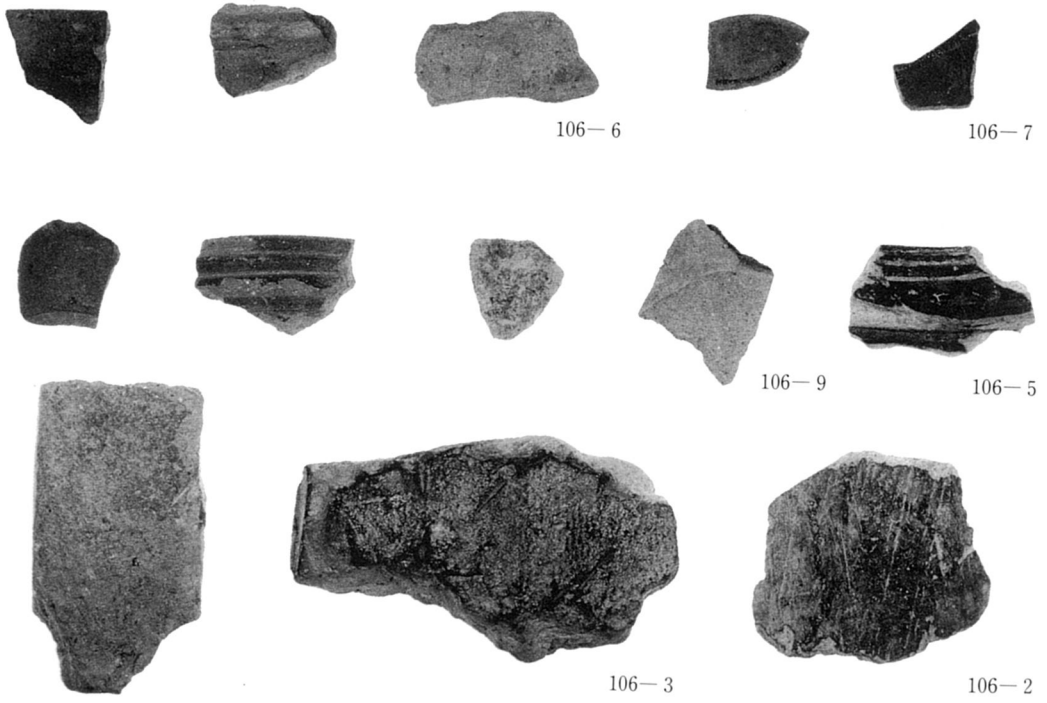


103-2

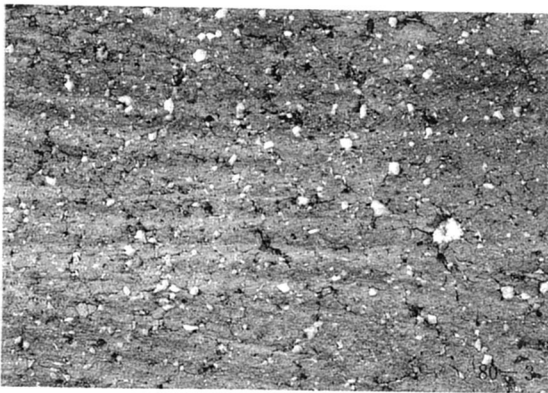


97-1

C区 411-OR 出土土器 (103-1、2、4)・300-OO 出土土器 (105-1)
黄色粘土 I 層出土土器 (97-1)



C区 379-OO 出土土器 (106-2、6、7、9)・383-OO 出土土器 (106-3、5)



C区 379-OO 出土「甚兵衛唐欽」(上段)・B・C区 縄文土器細部 (下段) a 巻貝条痕調整 b ナデ調整



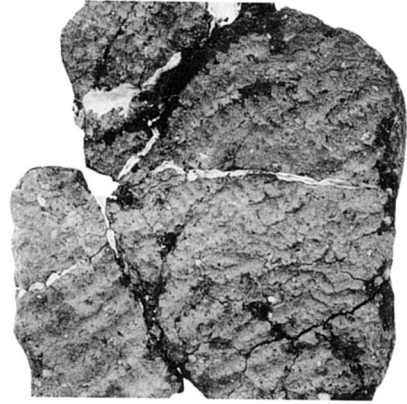
91-5



f



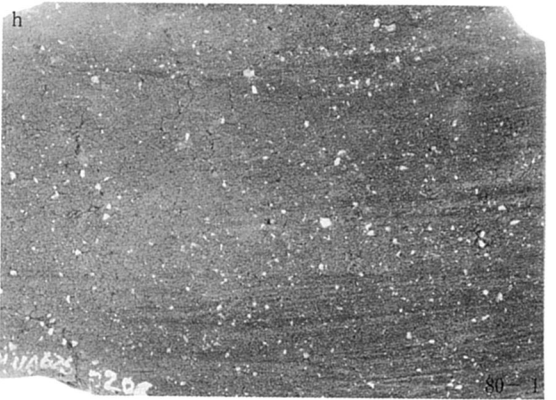
78-3



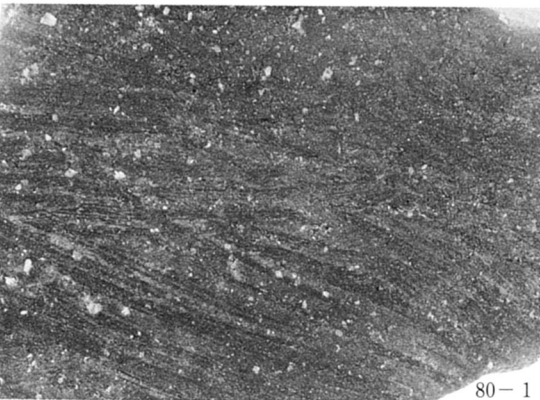
96-7



91-11



h

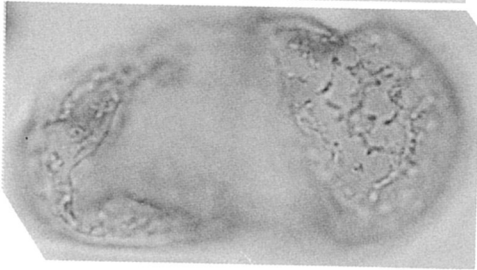
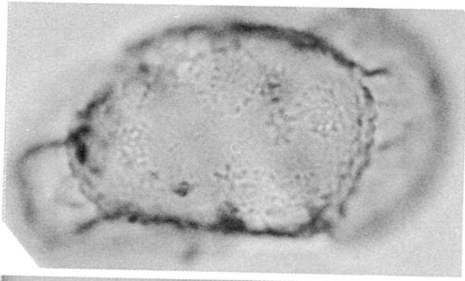


80-1

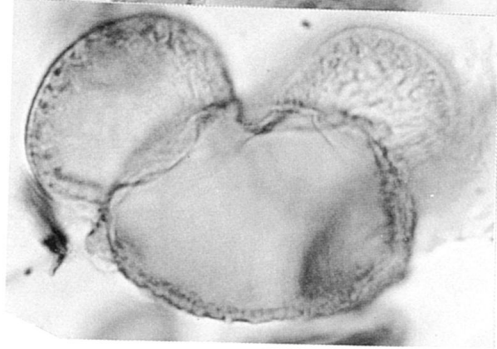
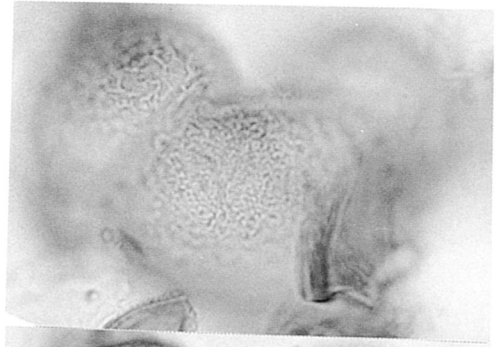


81-14

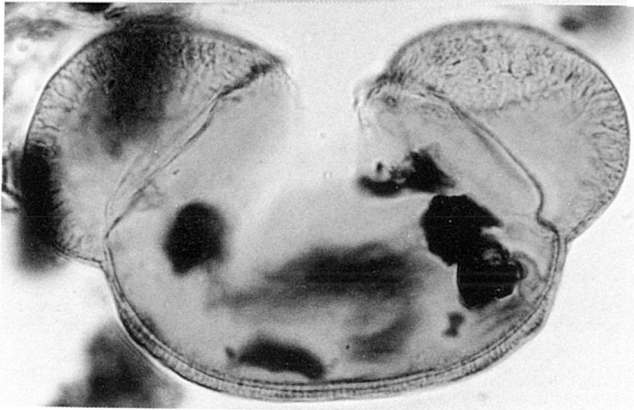
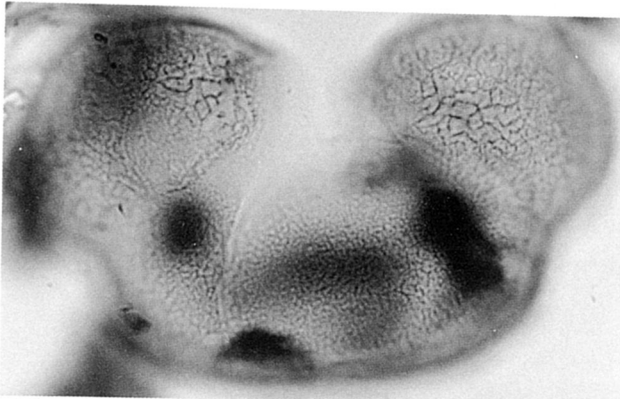
B・C区 縄文土器細部 c 縄文(LR) d 沈縄文 e 爪の圧痕 f 縄文(LR)
g 網代 h 植物枝茎による条痕調整
i 巻貝条痕調整 j 二枚貝条痕調整



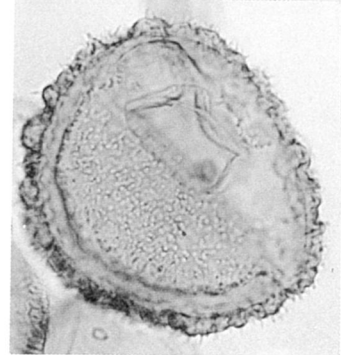
Podocarpus (イヌマキ属) 1
×600



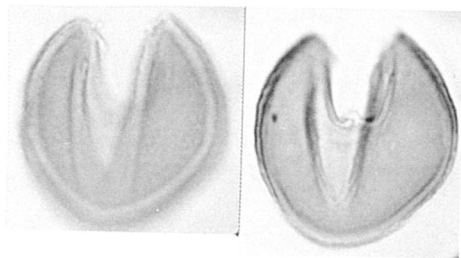
Diploxylon (ニヨウマツ亜属) 2
×600



Abies (モミ属) 3
×400



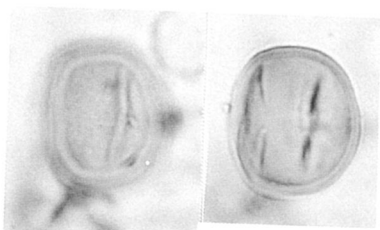
Tsuga (ツガ属) 4
×400



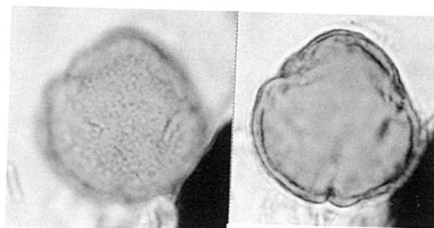
Cryptomeria (スギ属) 5
×600



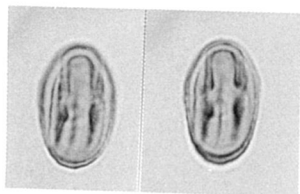
Sciadopitys (コヤマキ属) ×600 6



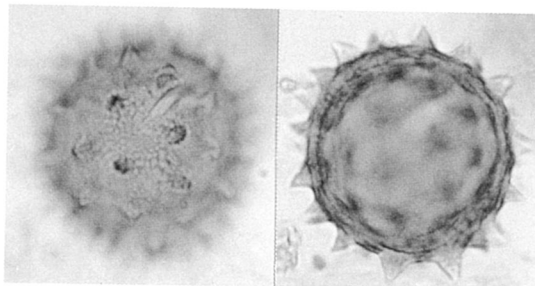
Cyclobalanopsis (アカガシ亜属) 7
×600



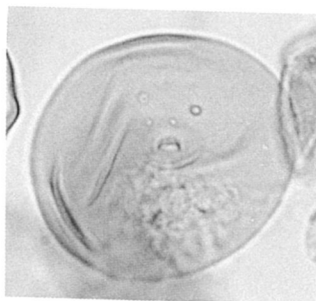
Quercus (コナラ亜属) ×600 8



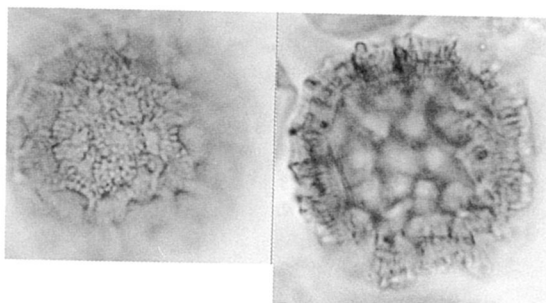
Castanopsis (シイノキ属) 9
×600



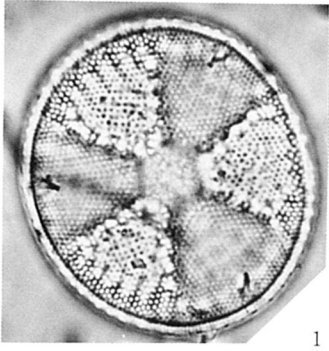
COMPOSITAE ×600 10
(キク科 *ヨモギ属、タンポポ亜科を除く)



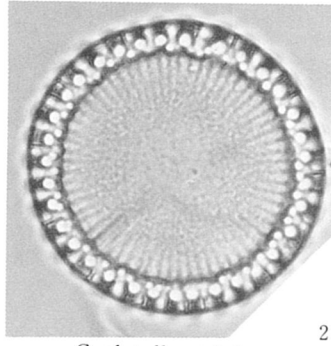
CRAMINEAE (>40) ×600 11
(40ミクロン以上のイネ科)



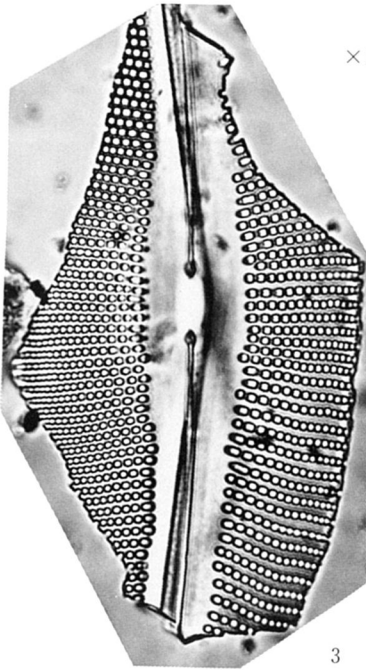
POLYGONACEAE (タデ科) ×600 12



1
Actynoptychus undulatus



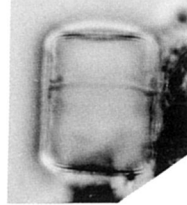
2
Cyclotella striata



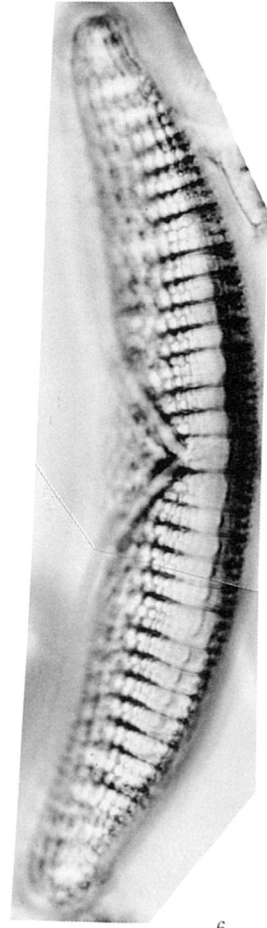
3
Cymbella aspera



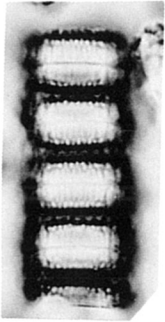
4
Melosira granulata



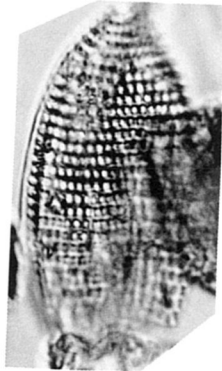
5
M. varians



6
Epithemia zebra



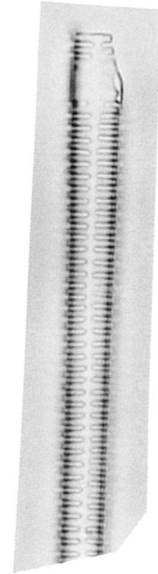
7
Melosira sulcata



8
Nitzschia cocconeiformis

9
Pinnularia

9



10
Synedra ulna

10

(財) 大阪府埋蔵文化財協会報告書 第11輯

都市計画道路・府道磯之上山直線建設に伴う

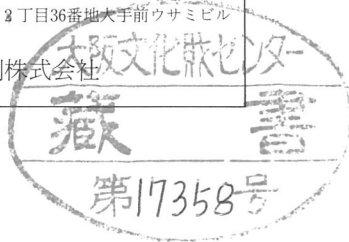
軽部池西遺跡発掘調査報告書

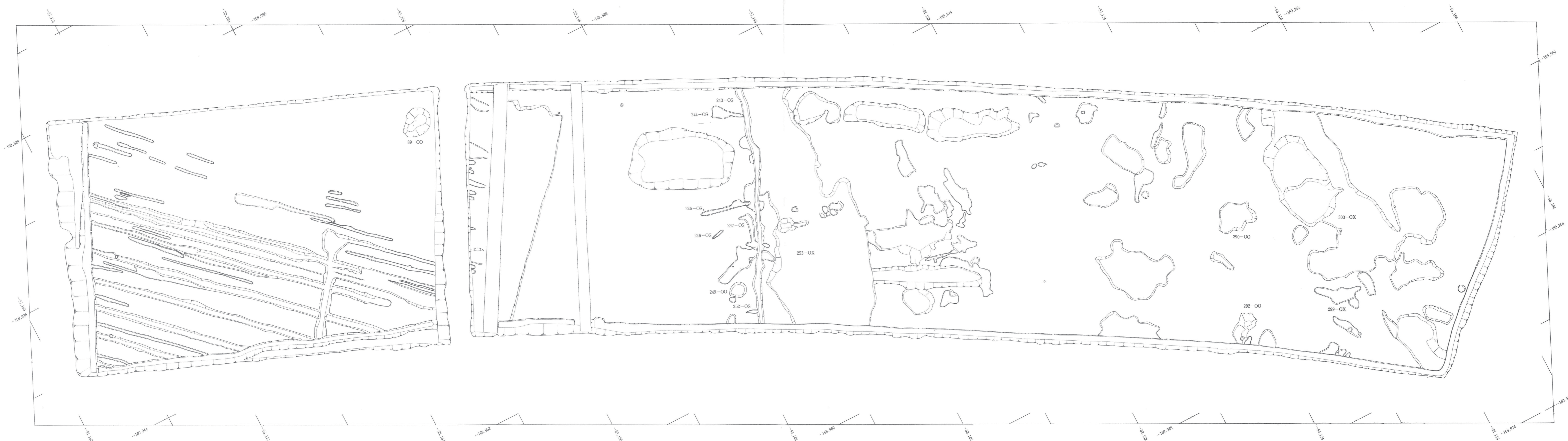
昭和62年3月31日発行

編集・発行 財団法人 大阪府埋蔵文化財協会

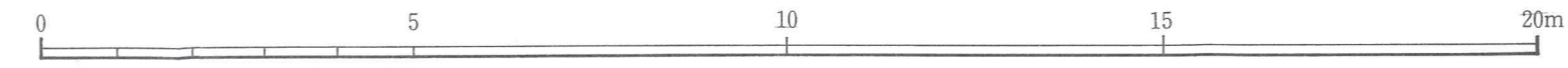
大阪市東区谷町2丁目36番地大手前ウサミビル

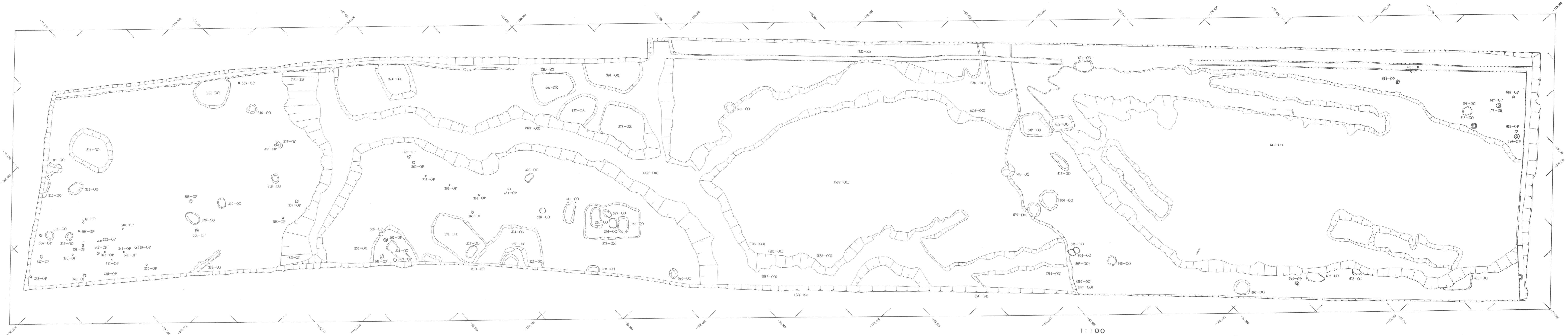
印刷 川西軽印刷株式会社





第106图 A-1·2区 遺構空測平面图





第107图 A-3·4区 遺構空測平面图

