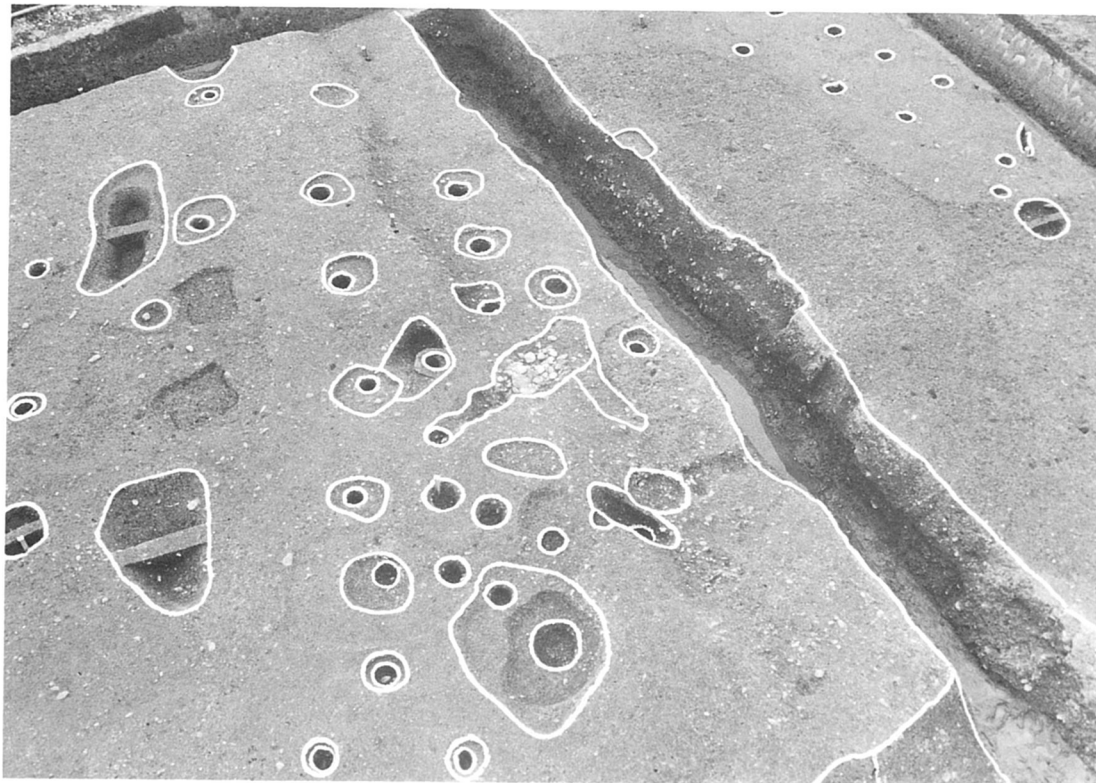




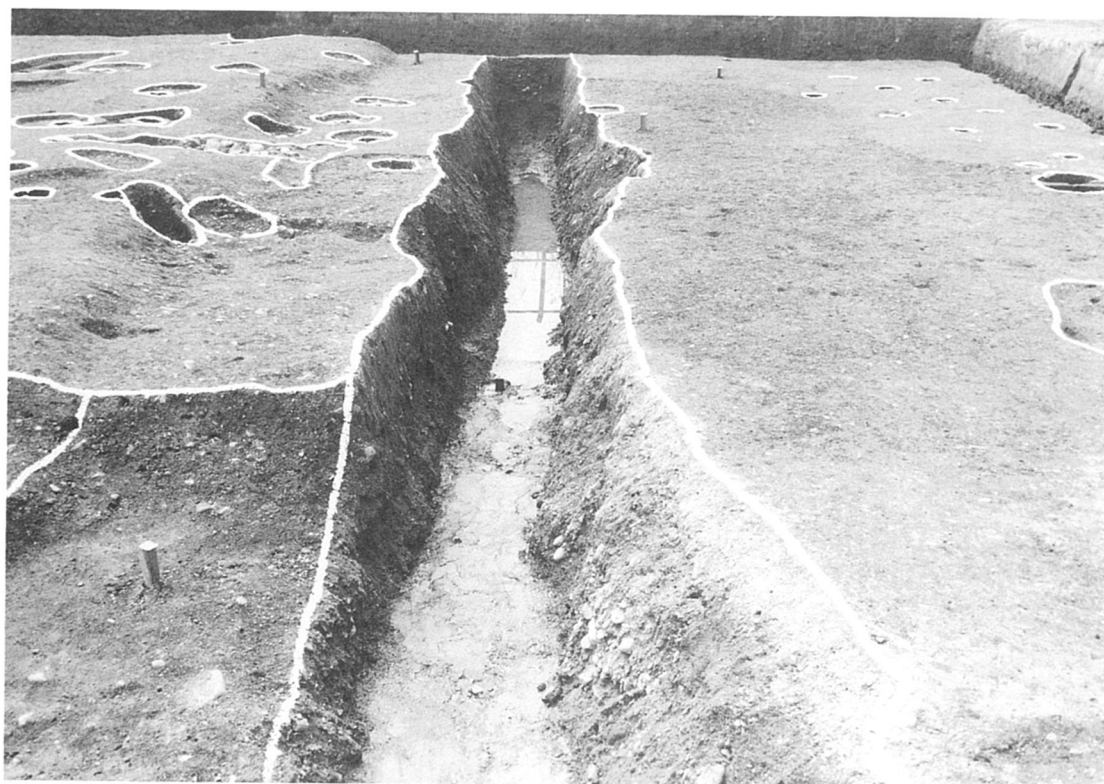
北端遺構群（東から）



409-OB（南から）



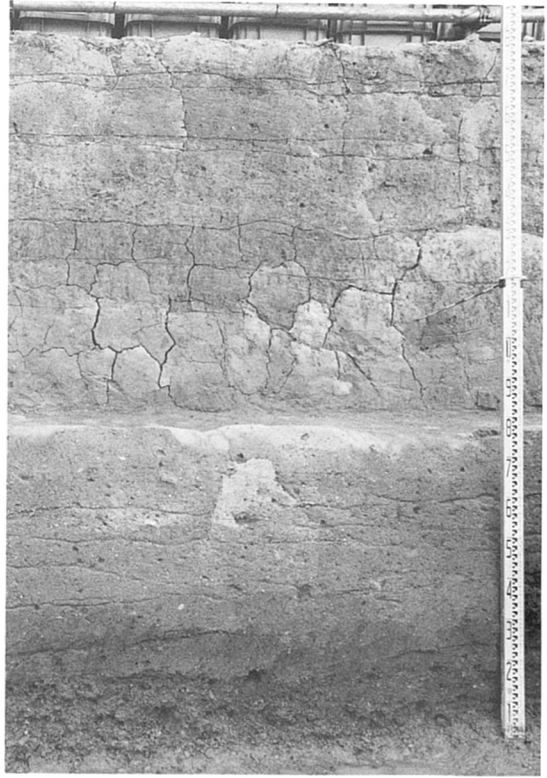
全景（東南より）



全景（東から）



4-OS、499-OX (北から)



4-OS、横断面 (東壁)



4-OS、497-00 (北壁②)  
12-OS (西壁)



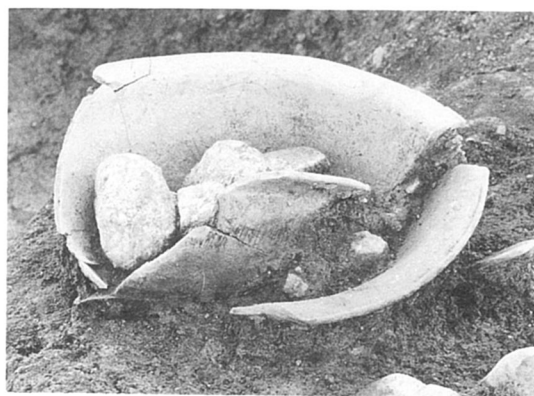
12-OS (西から)



13-OS (北西から)



402・444-OS (南西から)



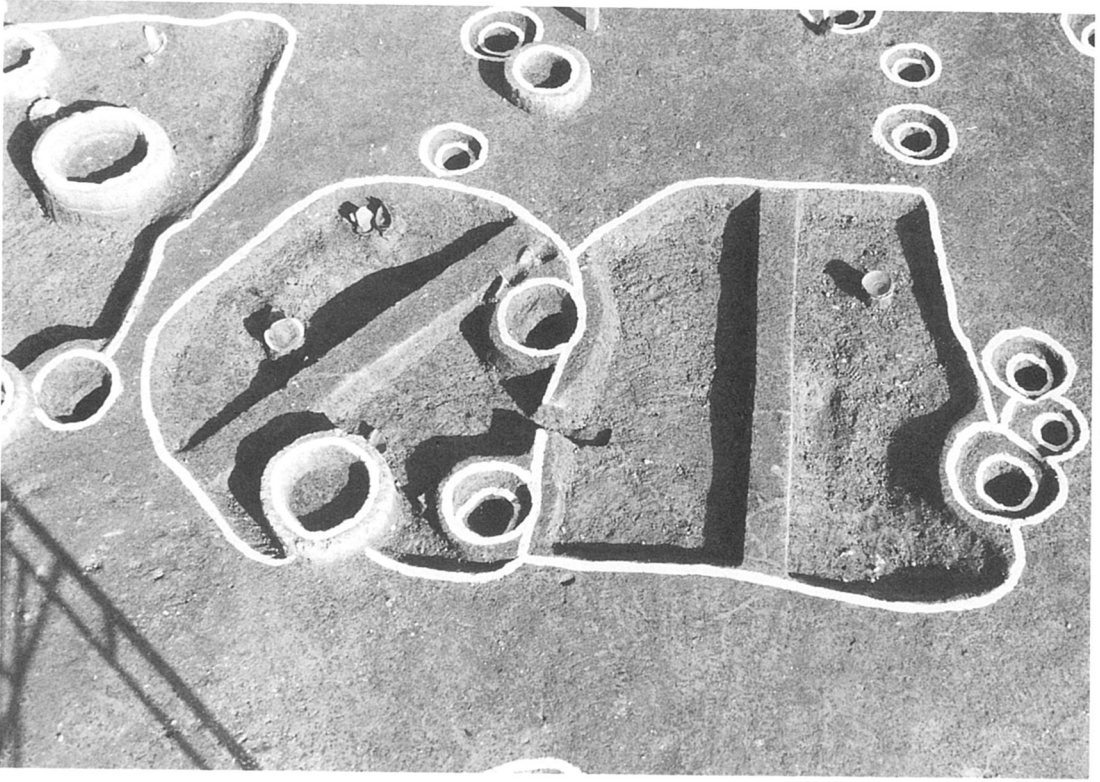
12-OS 土層土器出土状態  
402-OS土器出土状態



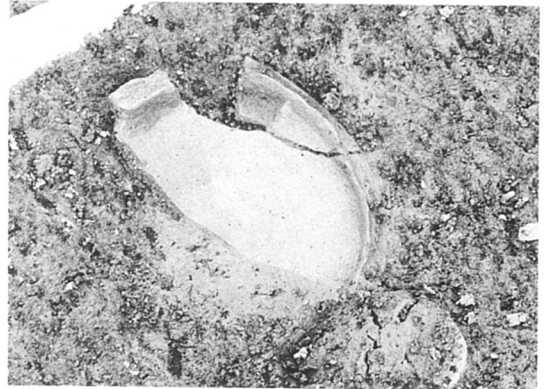
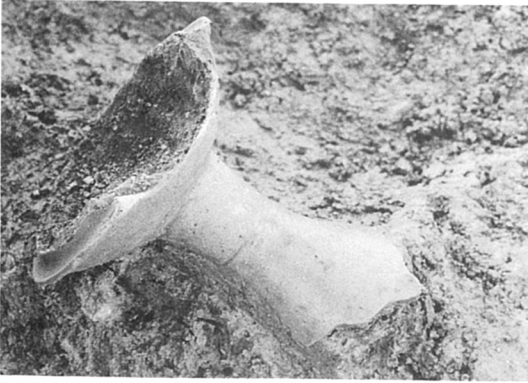
全景 (南から)



断面 (南から)

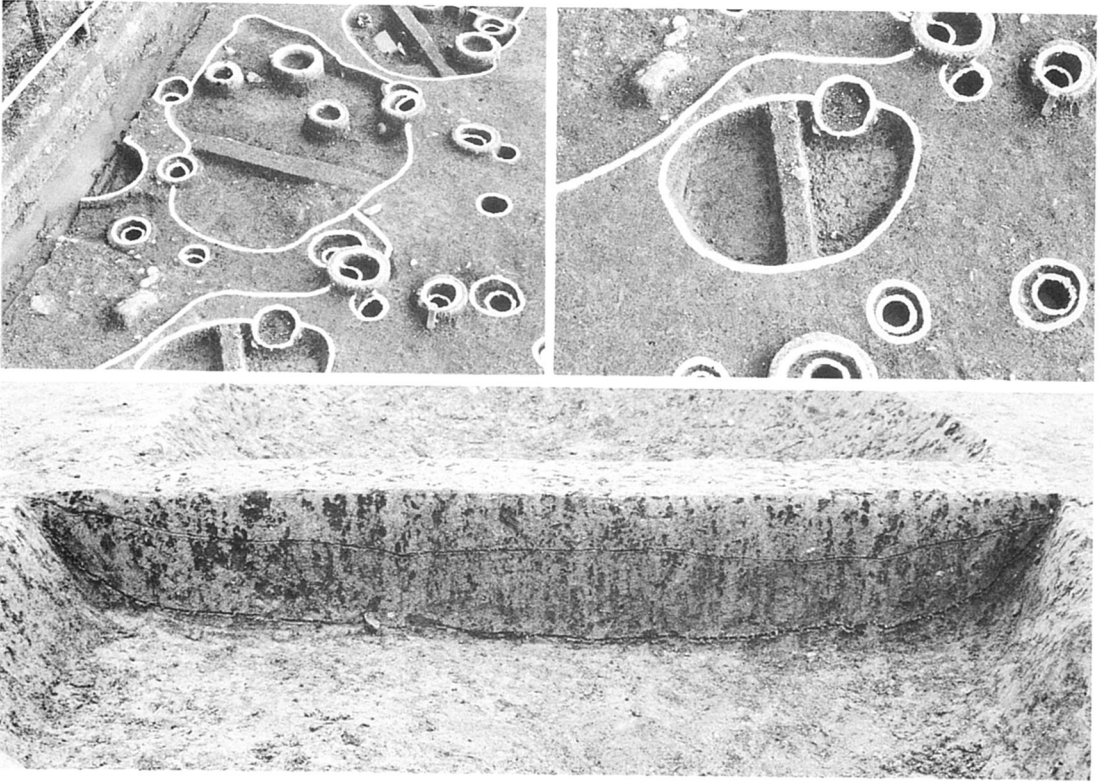


全景（西から）



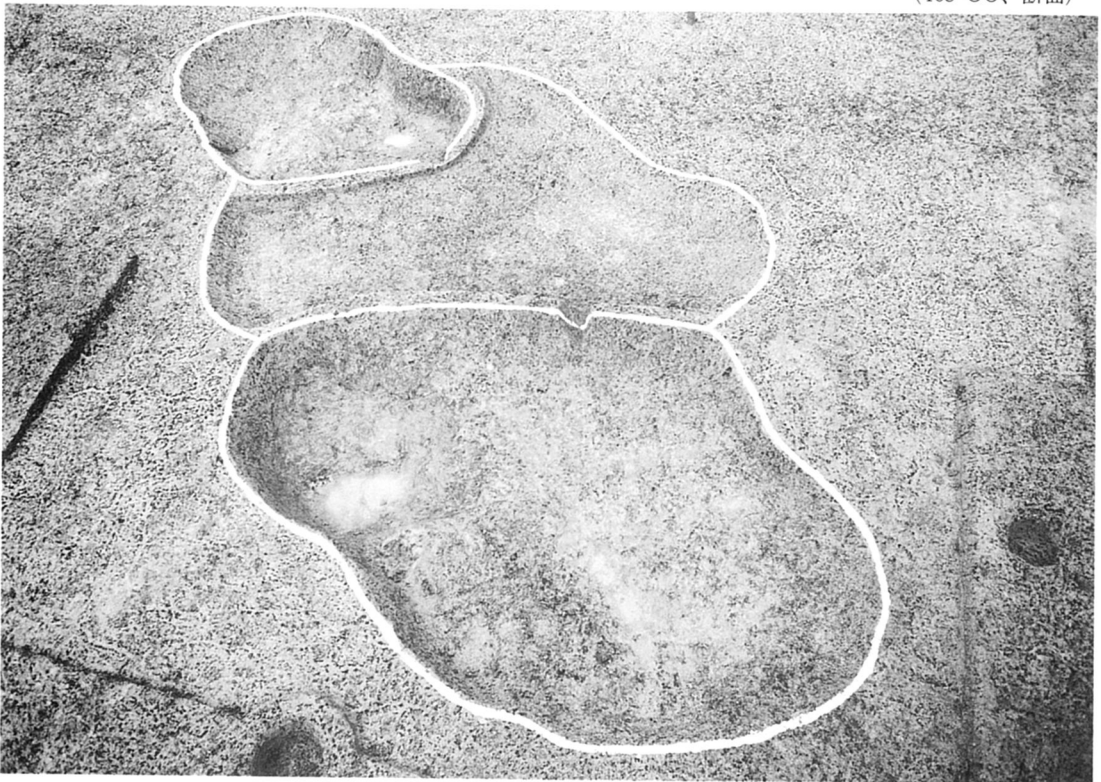
土器出土状態 (395-00)  
(376-00)

土器出土状態 (395-00)  
(376-00)

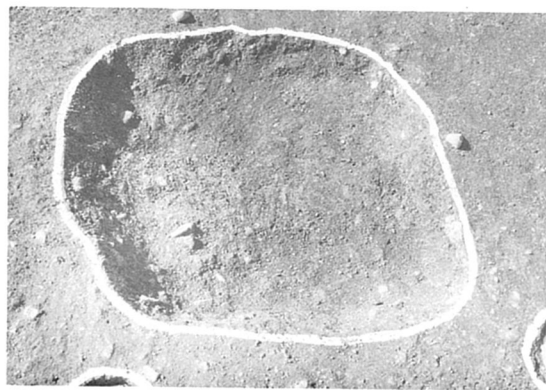


(376-00、北より)

(394-00、北より)  
(468-00、断面)



(470・476・468-00全景、東より)



10-00 (東から)  
497-00 (西から)

11-00 (東から)  
641-00 (北から)



10-00土器出土状態

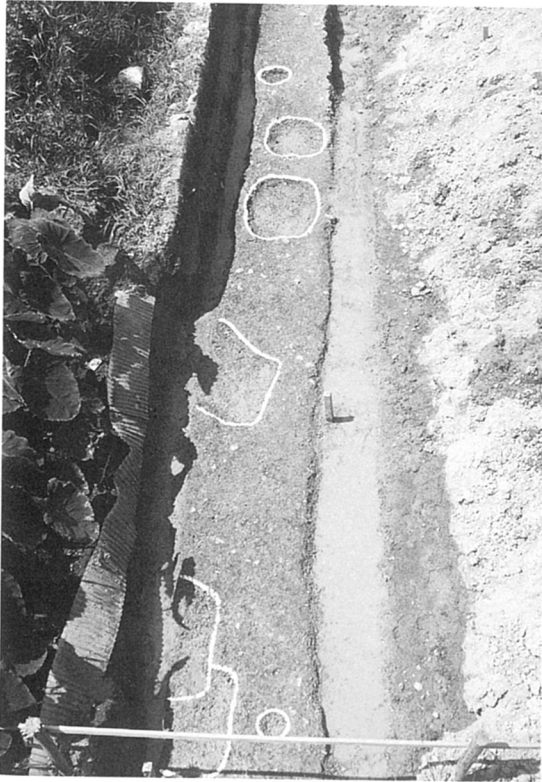




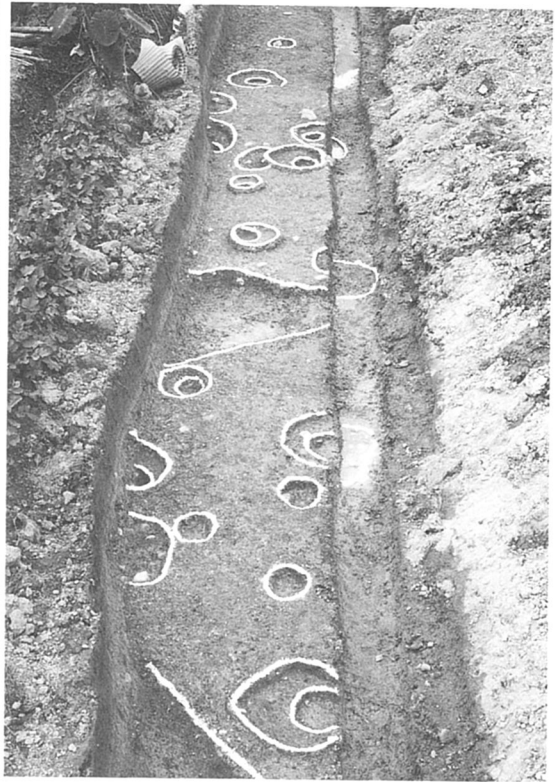
全景（北から）



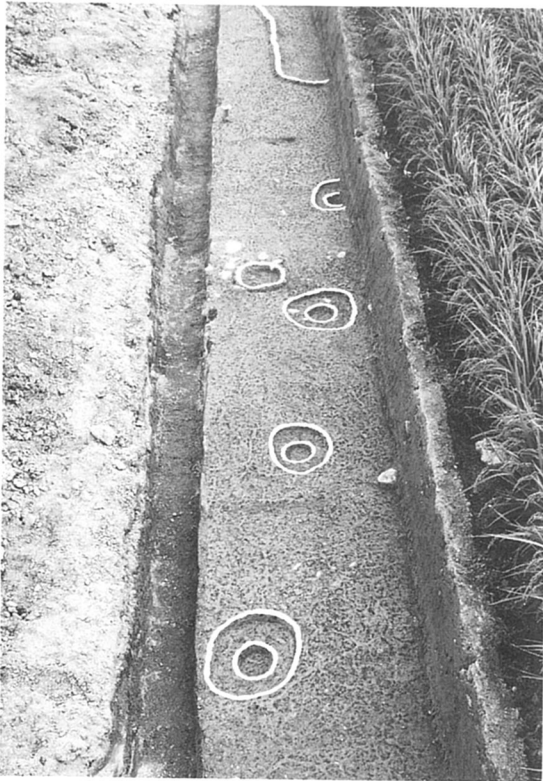
土器出土状態（北から）



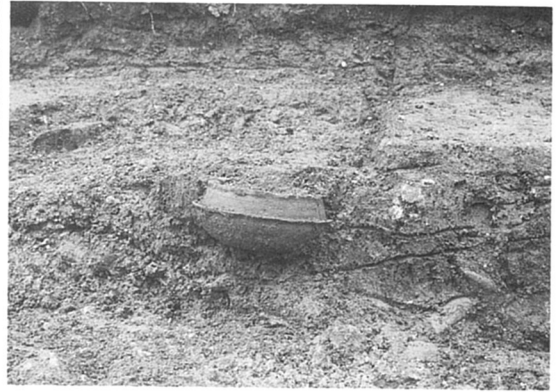
1次 (南から)



2次I区下段 (南から)

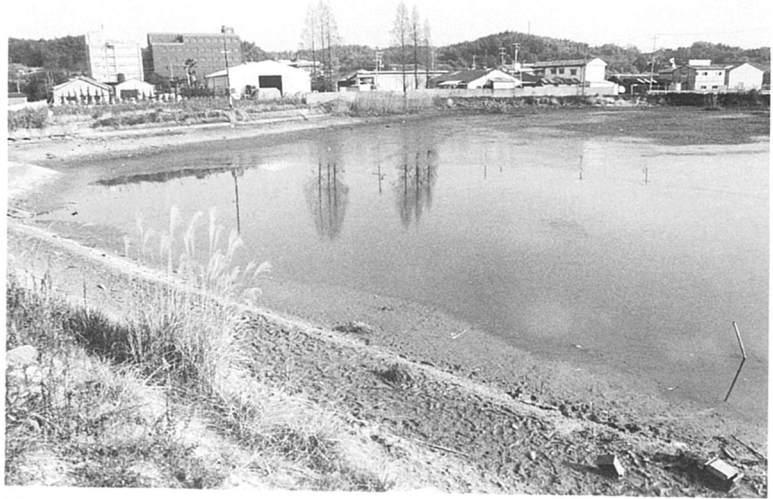


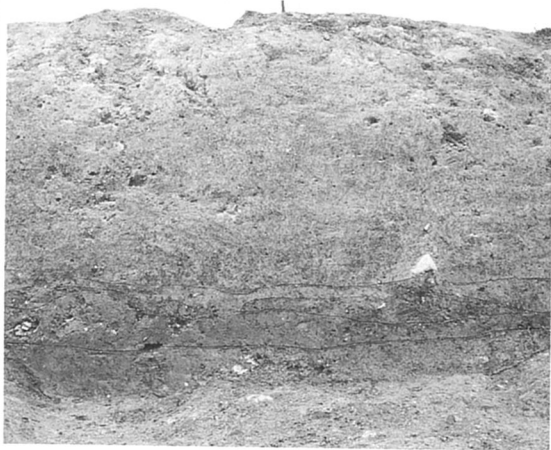
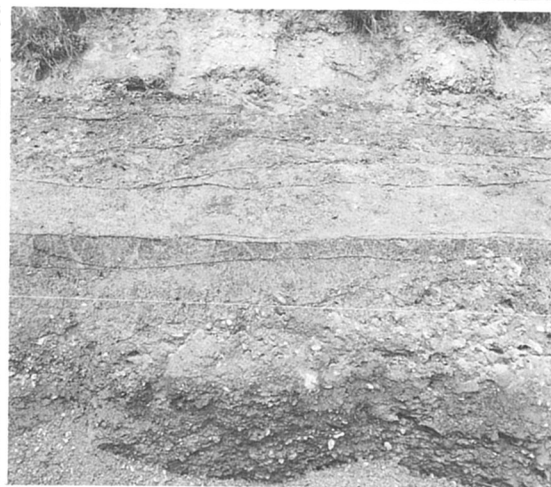
2次I区上段西 (北から)



2次1116-ODカマド土器出土状態  
1155-OP断面

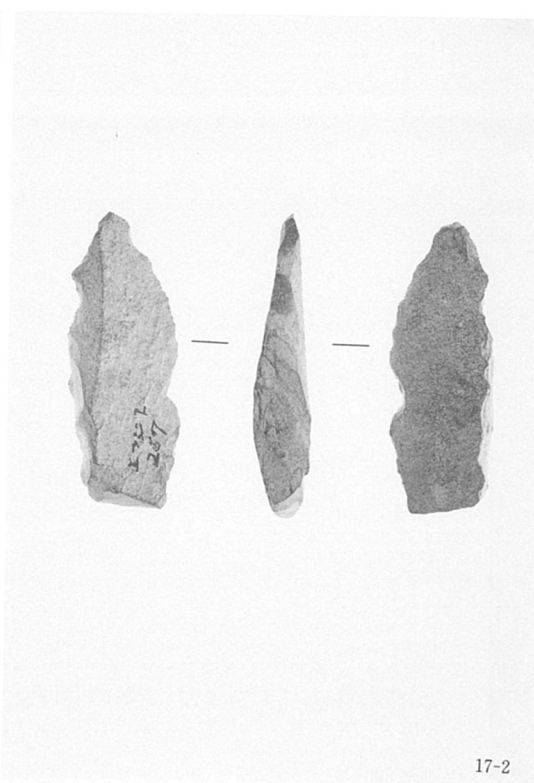
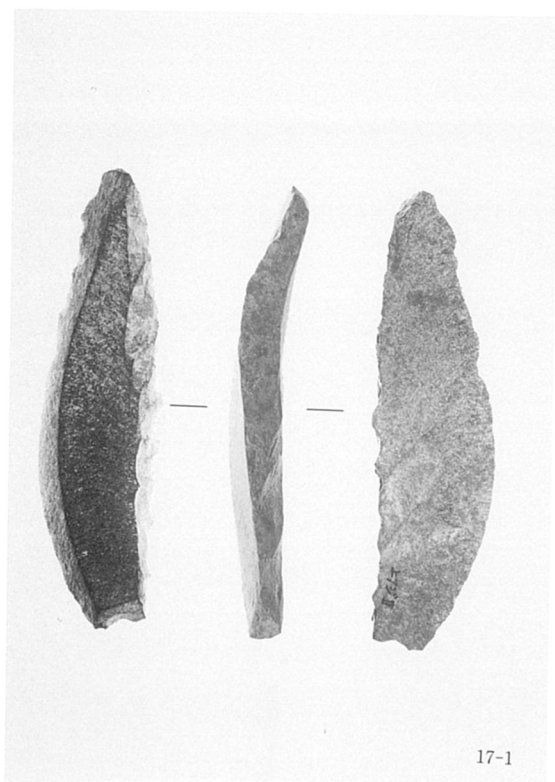
図版二四 藤池地区(1)



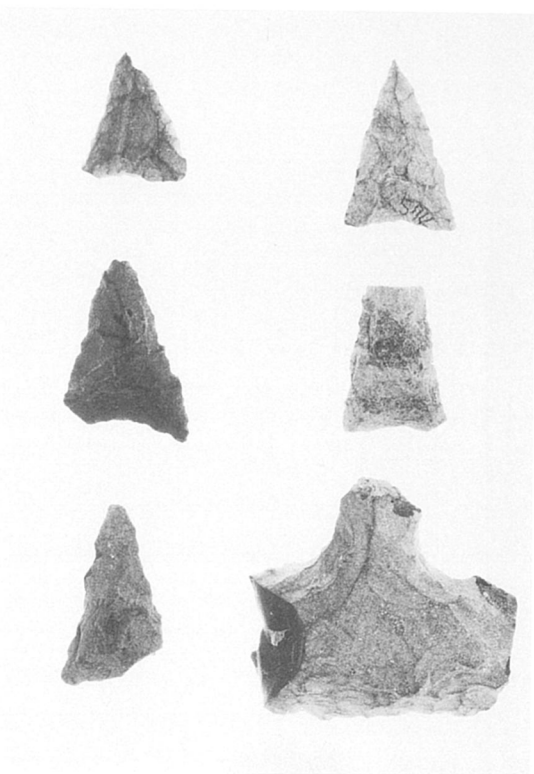
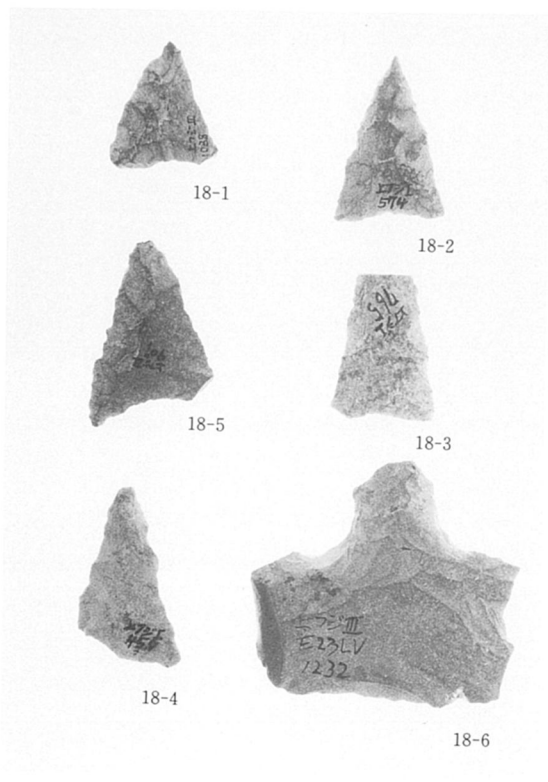


第1トレンチ (北から)  
全景 (南から)  
第3トレンチ (西から)

第1トレンチ溝断面 (西壁)  
藤池堤断面部分 (西から)  
藤池堤断面部分 (北から)

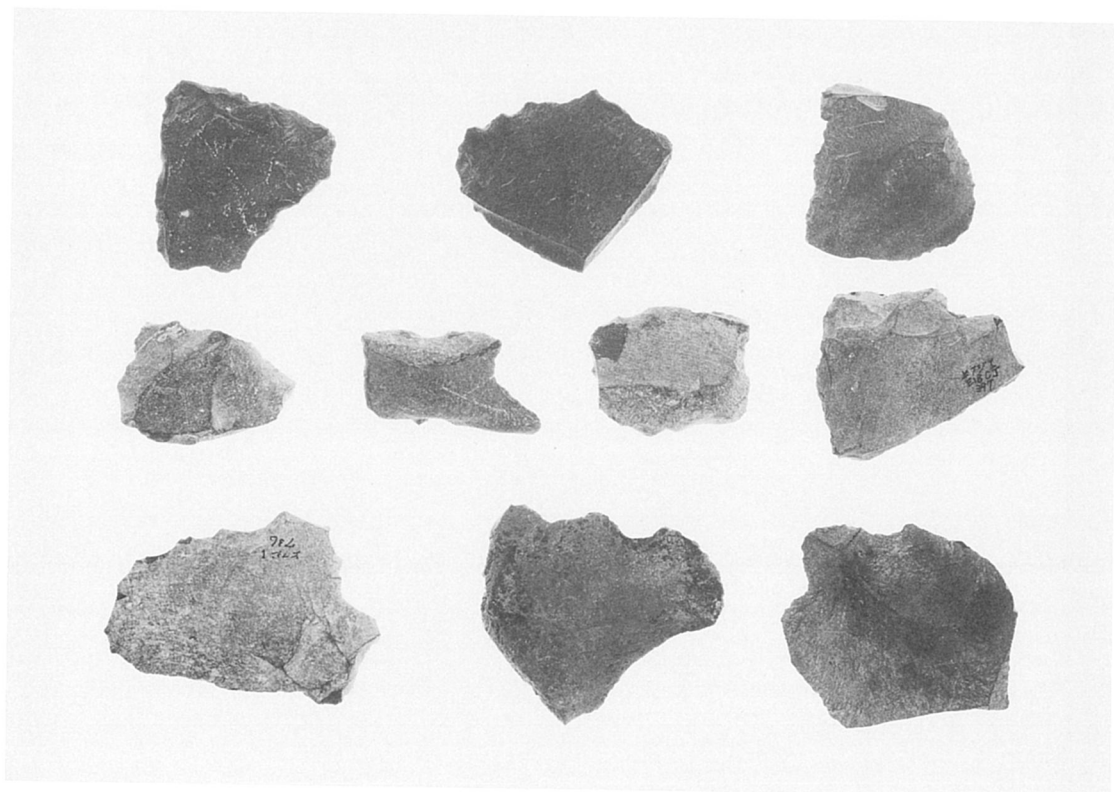
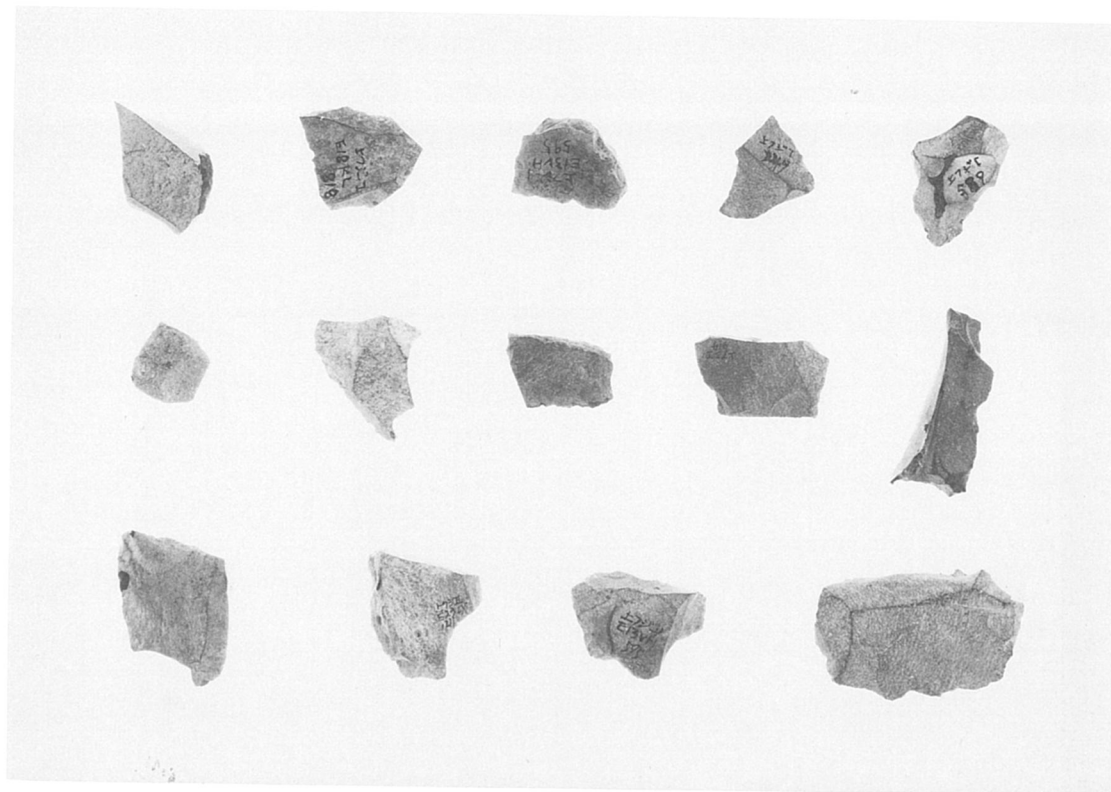


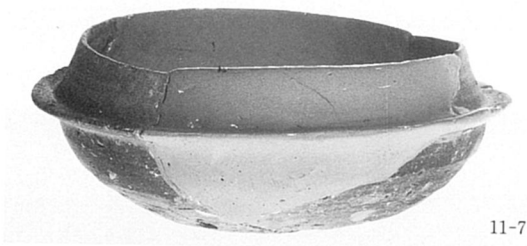
ナイフ型石器 (1・2)



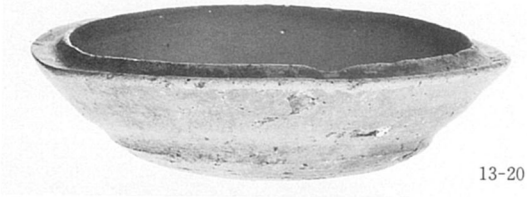
石鏃及び石匙 (1～3区)

図版二七 包含層出土先土器・縄紋時代遺物(2)





11-7



13-20



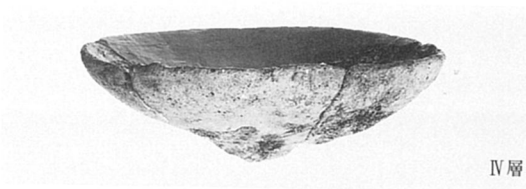
IV層



11-10



11-16



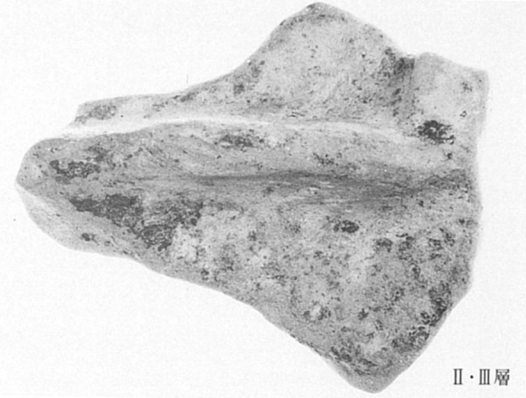
IV層



14-17



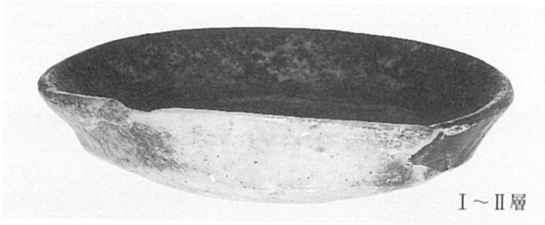
14-18



II・III層



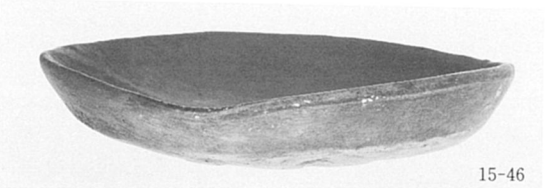
IV層



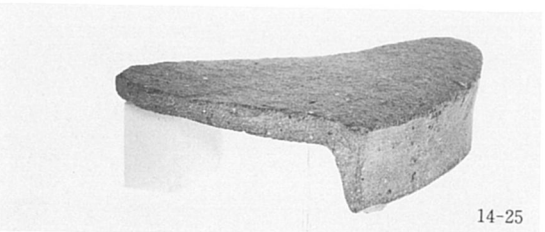
I～II層



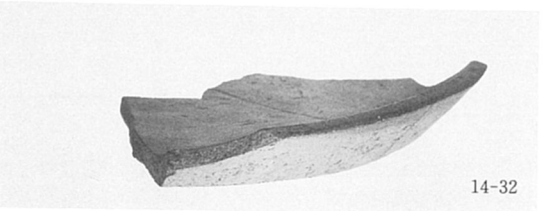
15-51



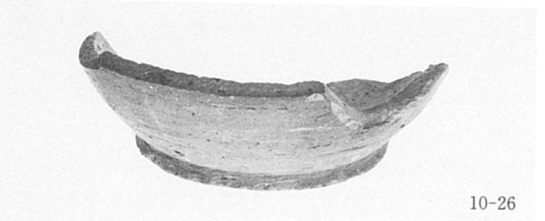
15-46



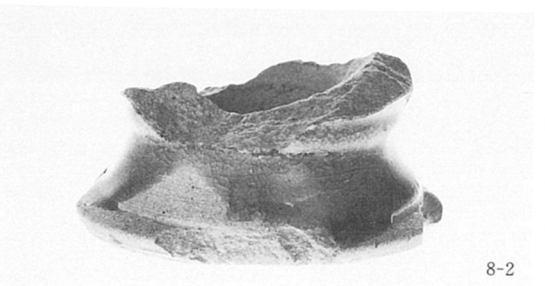
14-25



14-32



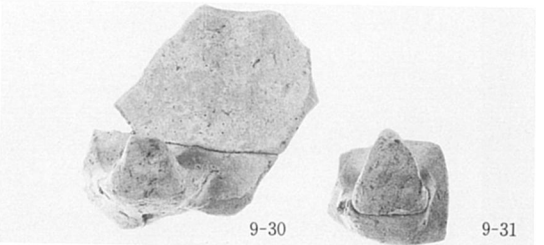
10-26



8-2

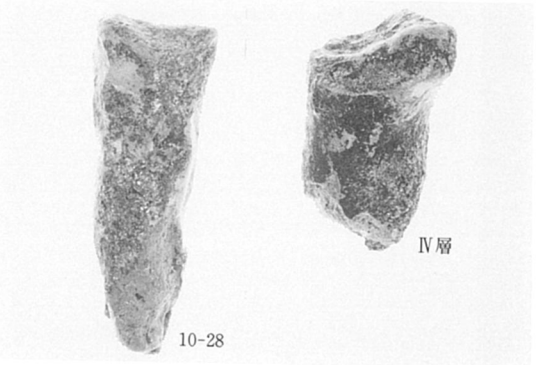


10-15



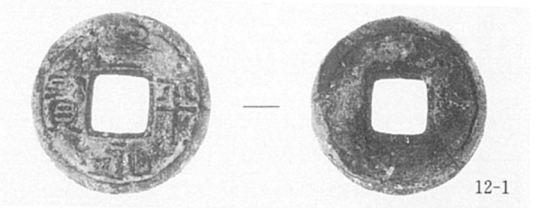
9-30

9-31

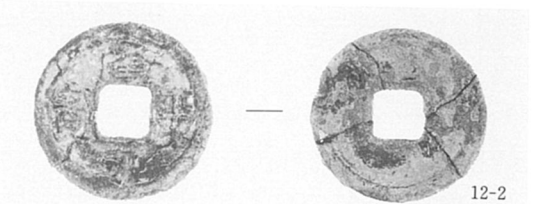


10-28

IV層



12-1

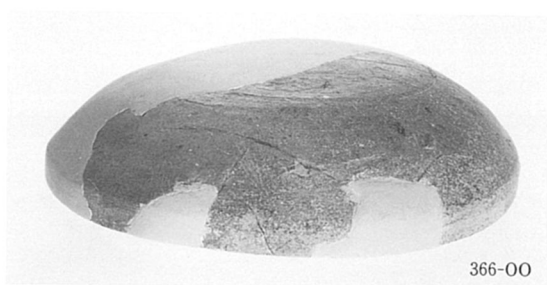


12-2

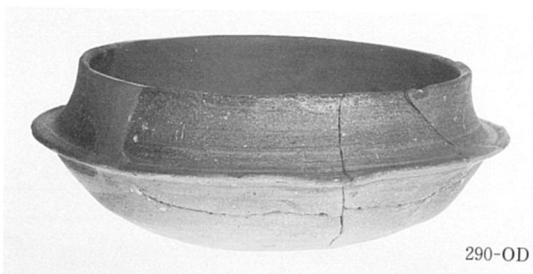




25-1



366-00



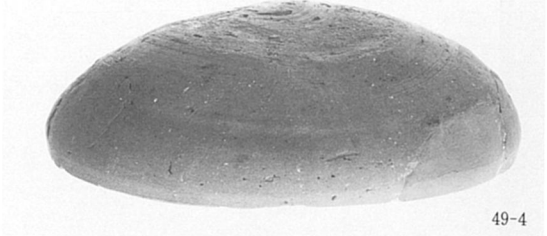
290-OD



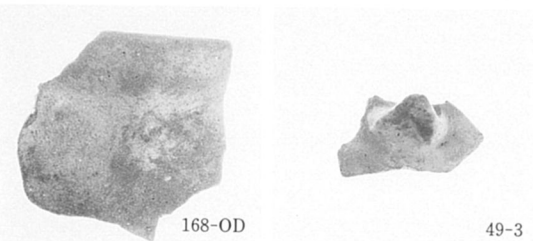
315-00



33-4



49-4



168-OD

49-3



49-10



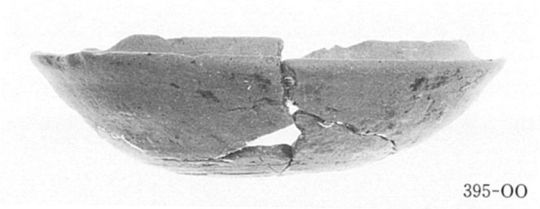
49-11



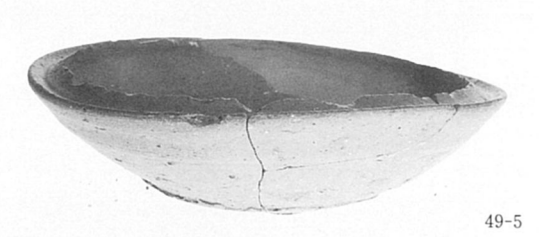
49-2



49-15



395-00



49-5



49-6



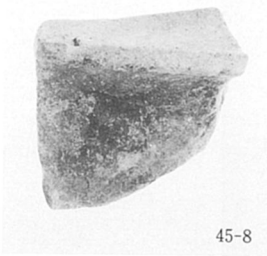
49-8



49-7



49-21



45-8



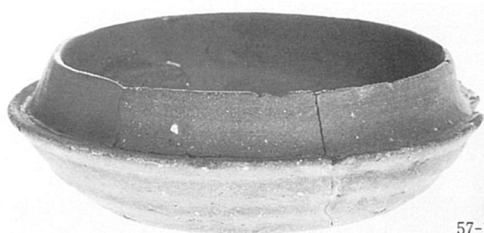
45-5



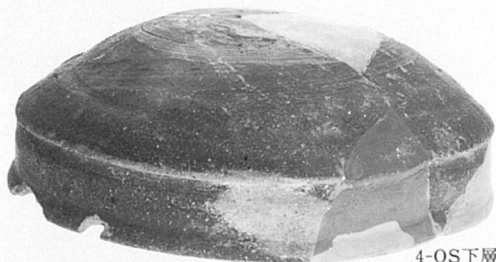
45-7



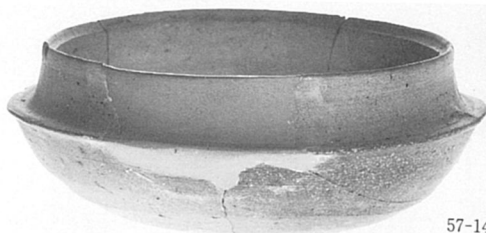
57-1



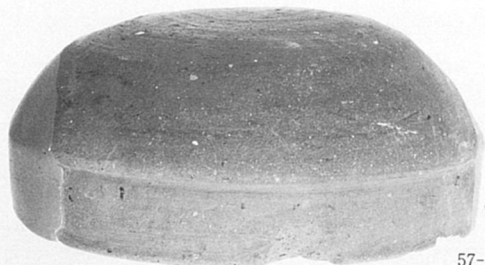
57-17



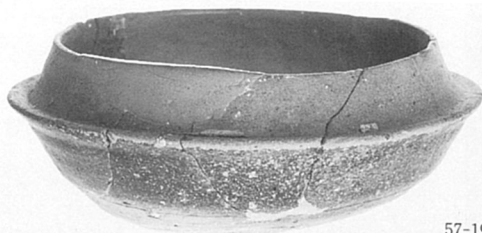
4-OS下層



57-14



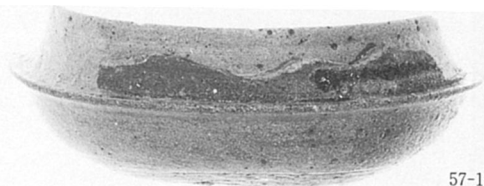
57-7



57-19



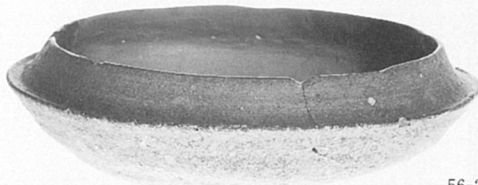
57-4



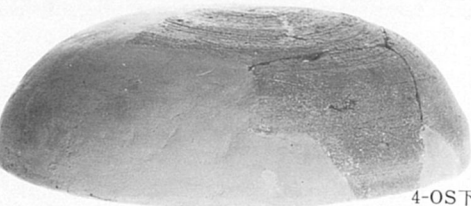
57-15



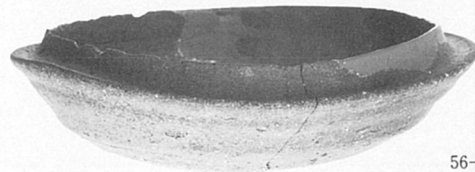
50-OP



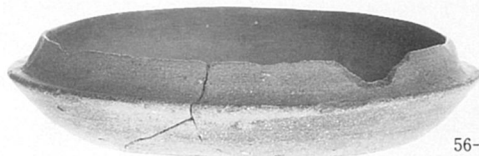
56-24



4-OS下層



56-22



56-27



4-OS



56-32



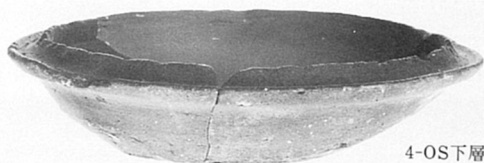
57-34



57-32



4-OS下層



4-OS下層



56-43



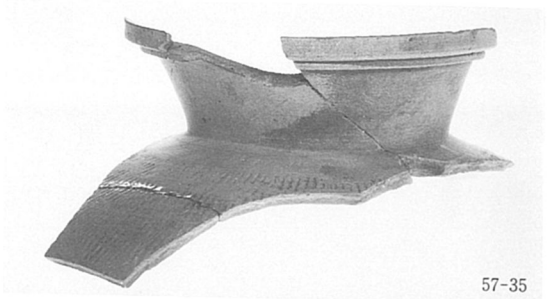
4-OS



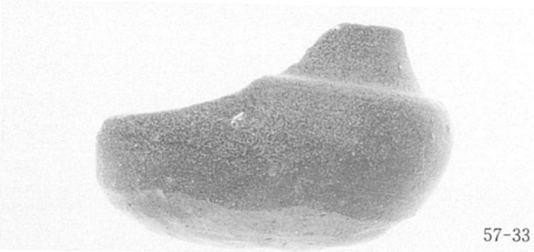
57-31



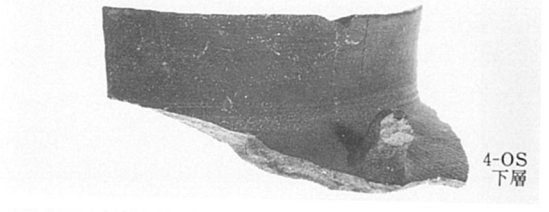
56-31



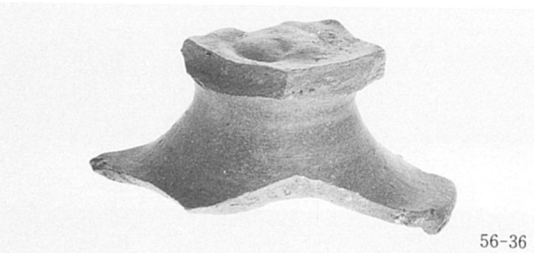
57-35



57-33



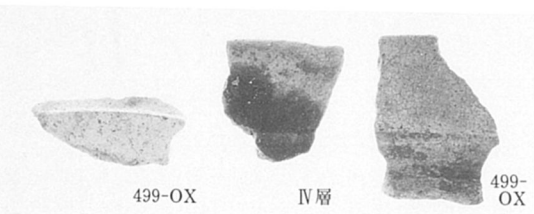
4-OS  
下層



56-36



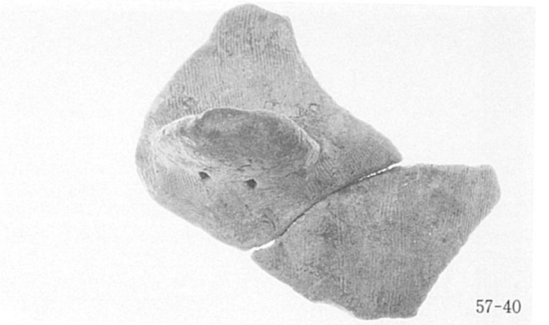
56-39



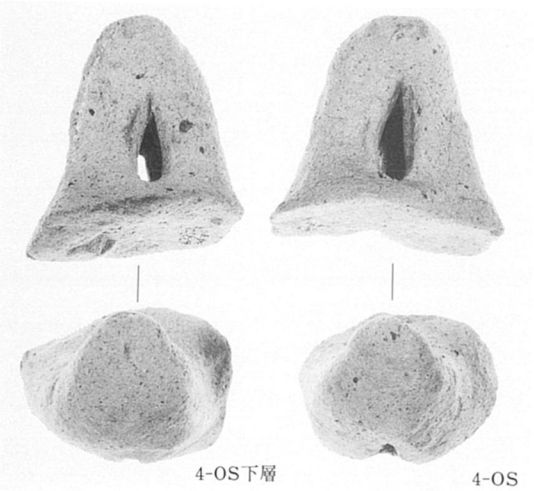
499-OX

IV層

499-OX

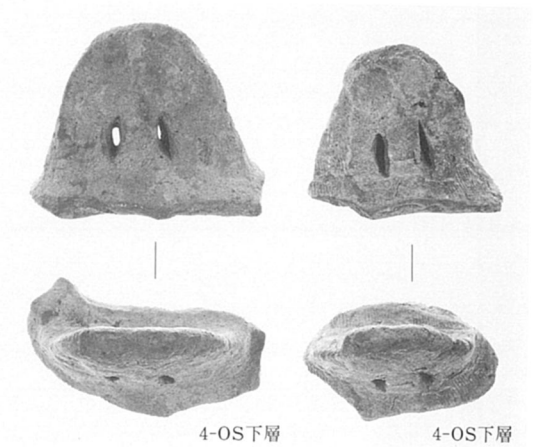


57-40



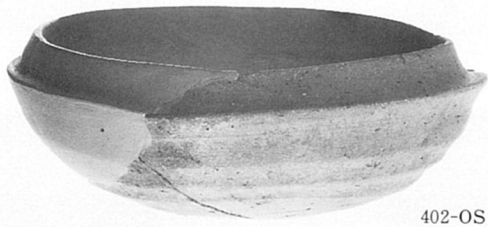
4-OS下層

4-OS



4-OS下層

4-OS下層



402-OS



1124-OS



12-OS



54-6



54-4



54-13



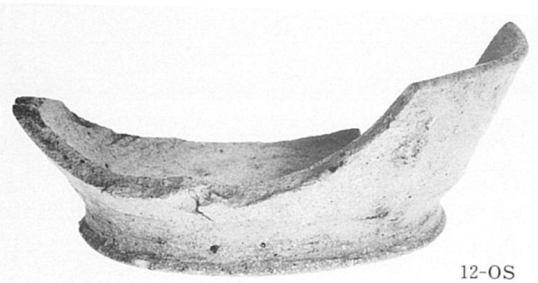
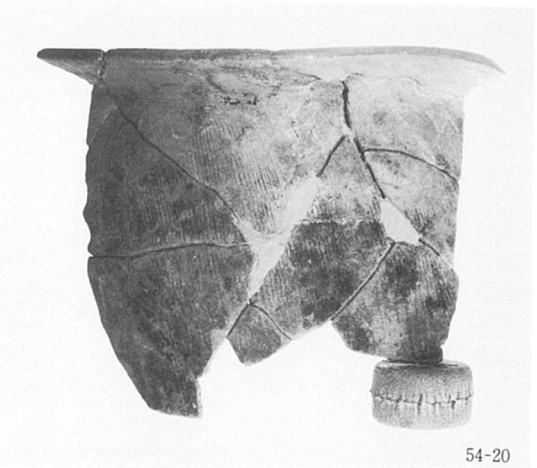
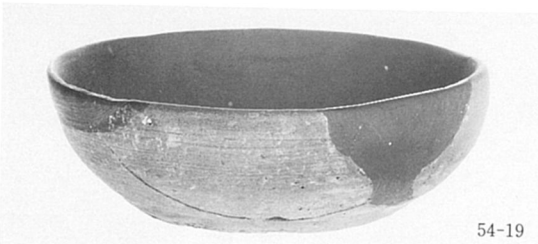
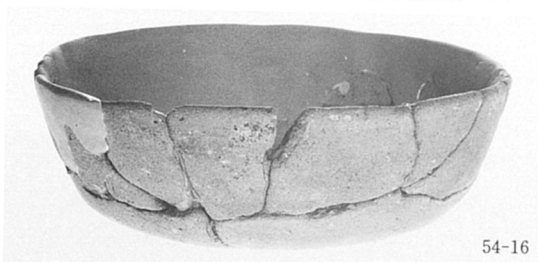
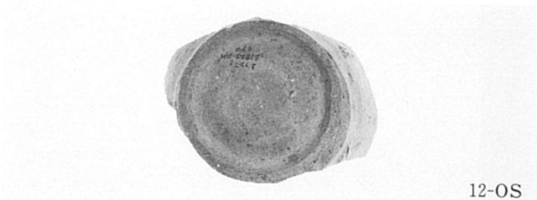
54-12

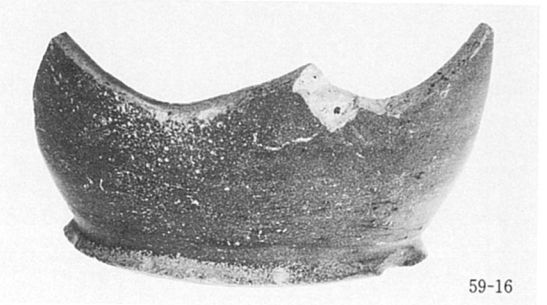
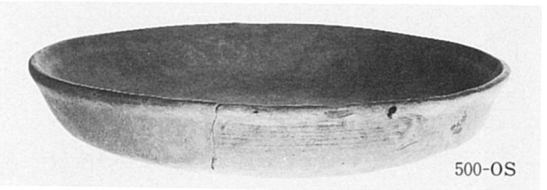
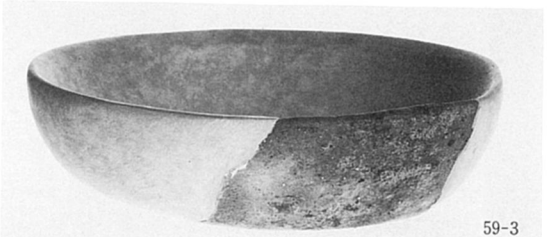
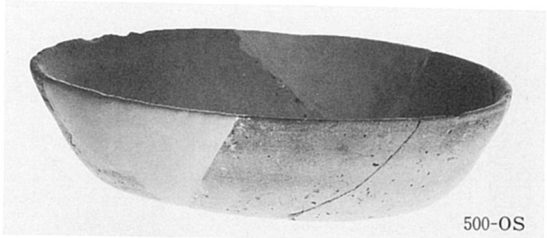
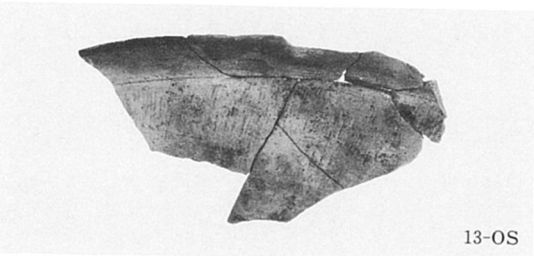
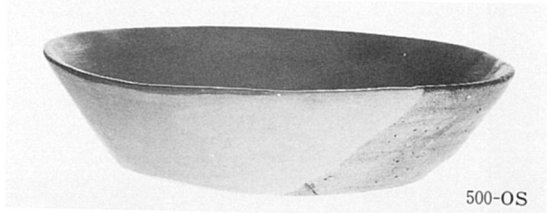
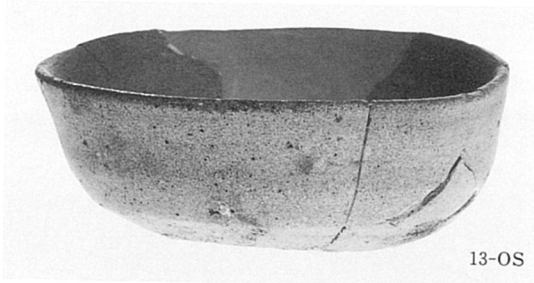


54-14



54-8

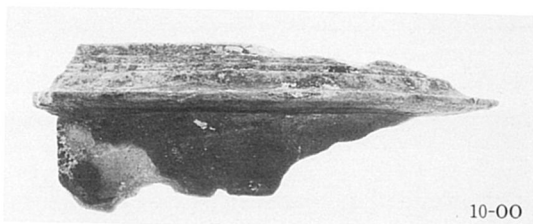




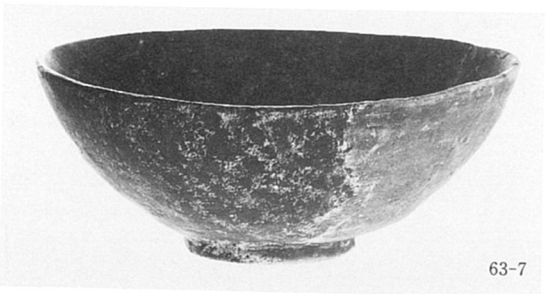




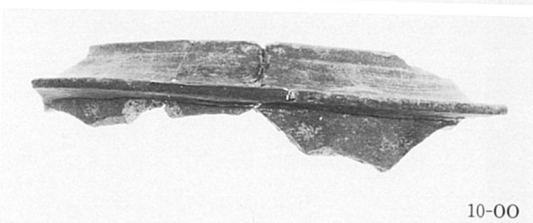
63-1



10-00



63-7



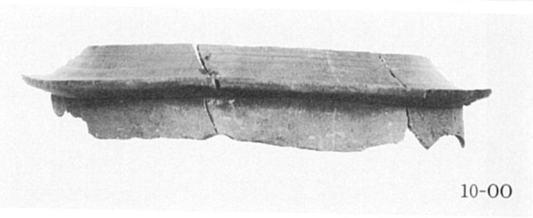
10-00



63-2



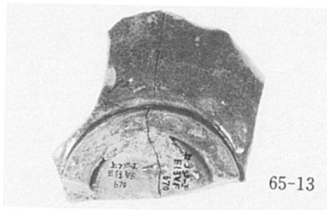
10-00



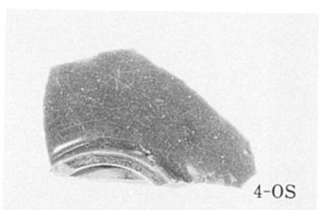
10-00



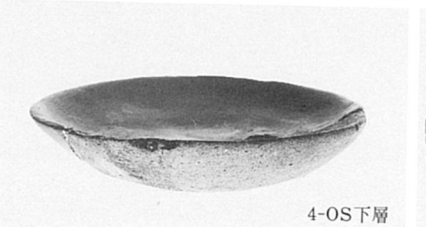
63-10



65-13



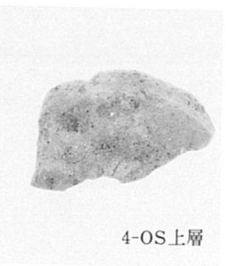
4-OS



4-OS下層



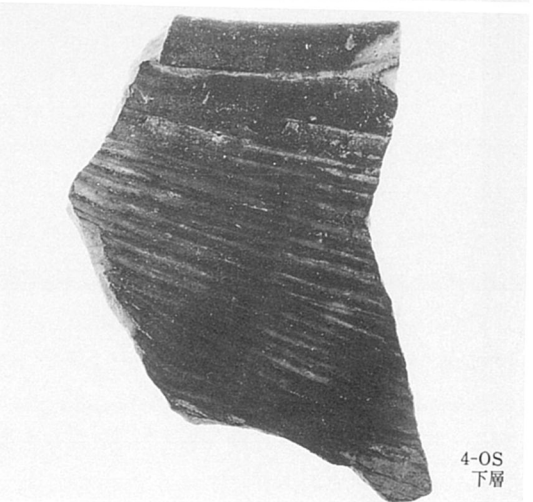
4-OS下層



4-OS上層



4-OS上層



4-OS下層

(財)大阪府埋蔵文化財協会報告書第25輯  
主要地方道岸和田・牛滝山・貝塚線(府道磯之上山直線)建設に伴う

# 上 フ ジ 遺 跡

—発掘調査報告書—

1988年3月31日発行

編集・発行 財団法人 大阪府埋蔵文化財協会

大阪市東区谷町2-36 大手前ウサミビル

印 刷 株式会社 中島弘文堂印刷所

