



a. 飯ノ峯川右岸屋敷跡検出石列



b. 同上、銅製品出土状況
d. 同上、鉄鎌出土状況

c. 同上、銅製香炉出土状況
e. 同上、漆器碗出土状況



a. 飯ノ峯川右岸屋敷跡、石製流し出土状況



b. 同上、陶磁器(蓋、德利)出土状況



c. 同上、陶磁器(燭台)出土状況



d. 同上、陶磁器(甕、插鉢、蓋)出土状況



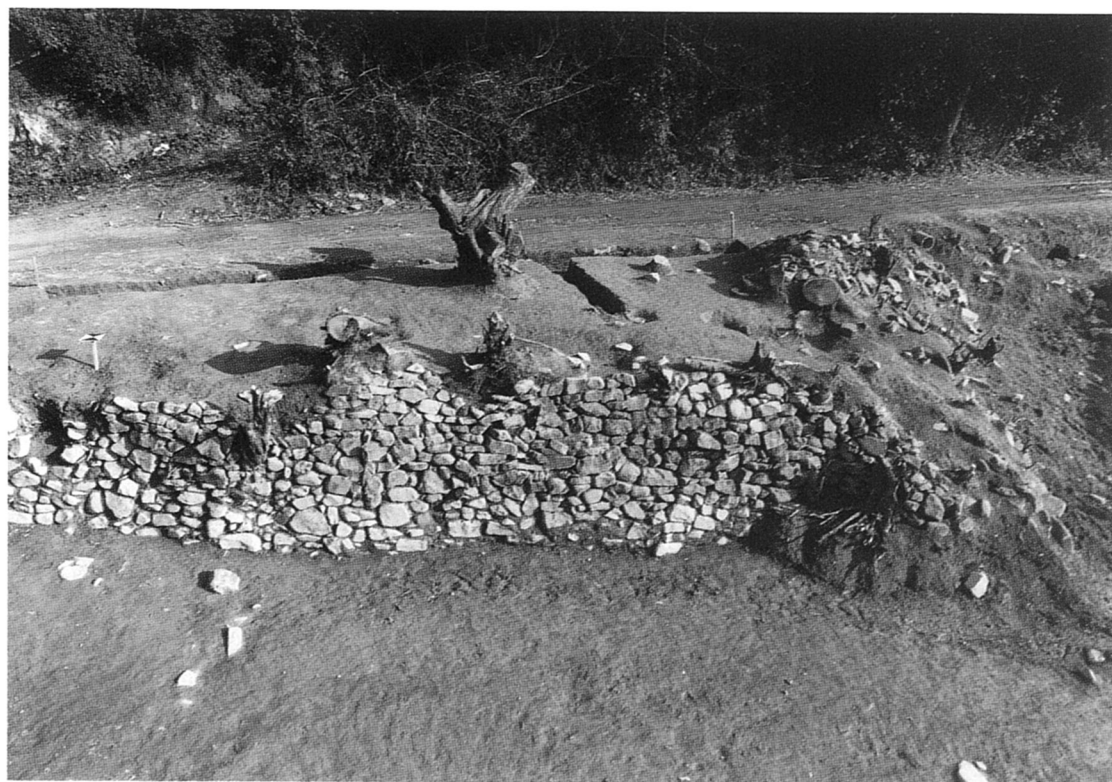
e. 同上、陶磁器(碗)出土状況



a. 飯ノ峯川右岸屋敷跡石垣28-O E



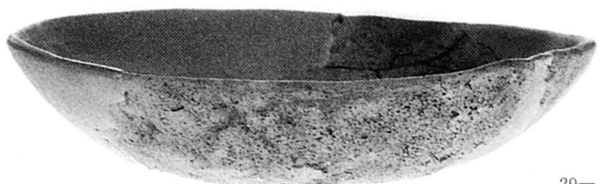
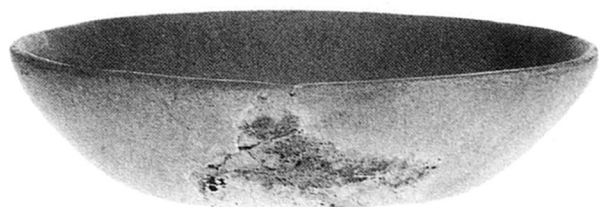
a. 飯ノ峯川右岸屋敷跡石垣28-O E (南から)



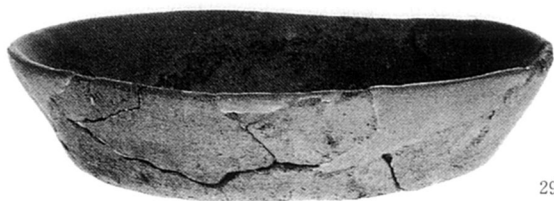
a. 飯ノ峯川右岸屋敷跡石垣29-O E



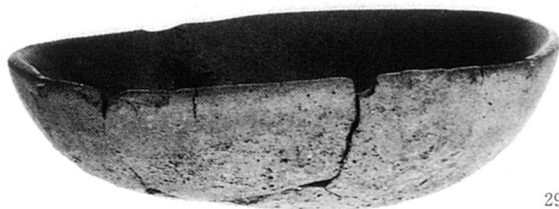
b. 飯ノ峯川右岸 石組み遺構26-O E



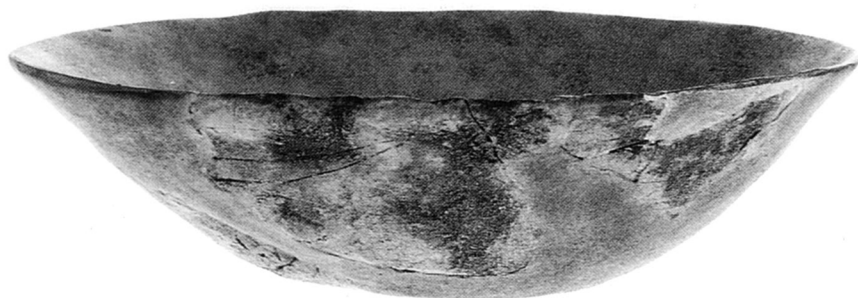
29-6



29-8



29-7



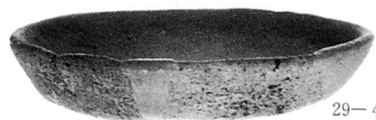
29-9



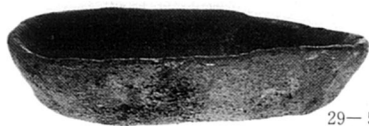
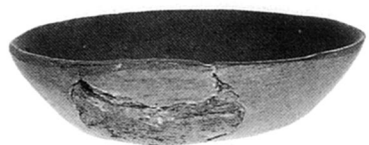
29-3



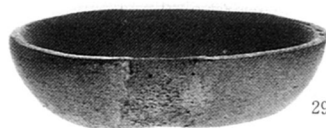
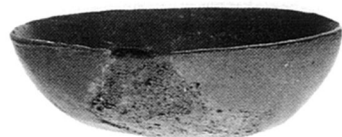
29-1



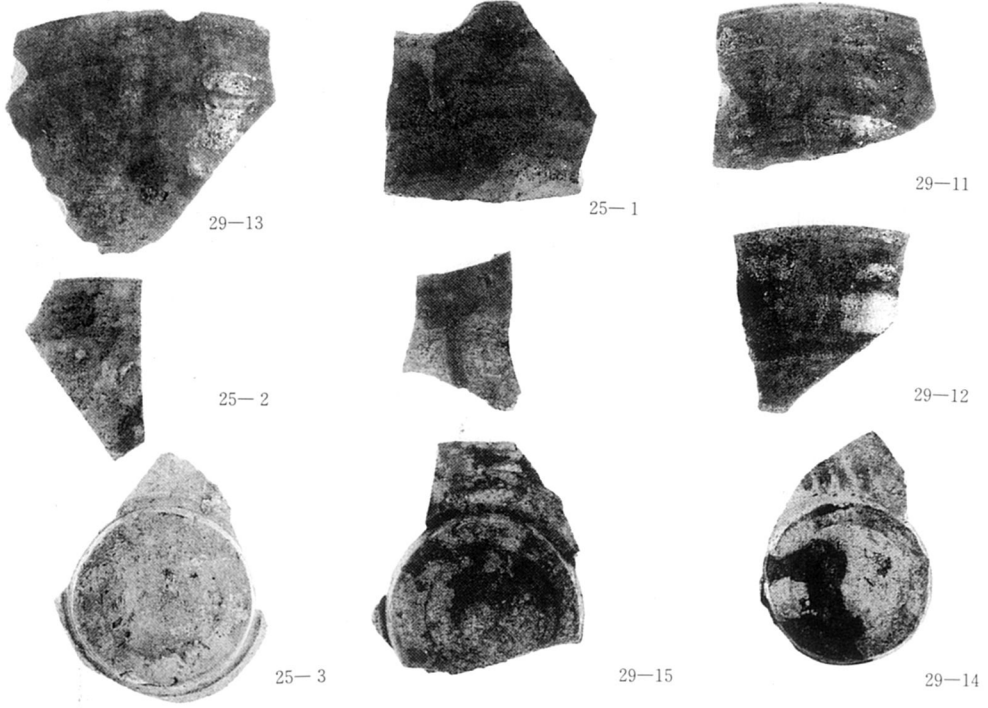
29-4



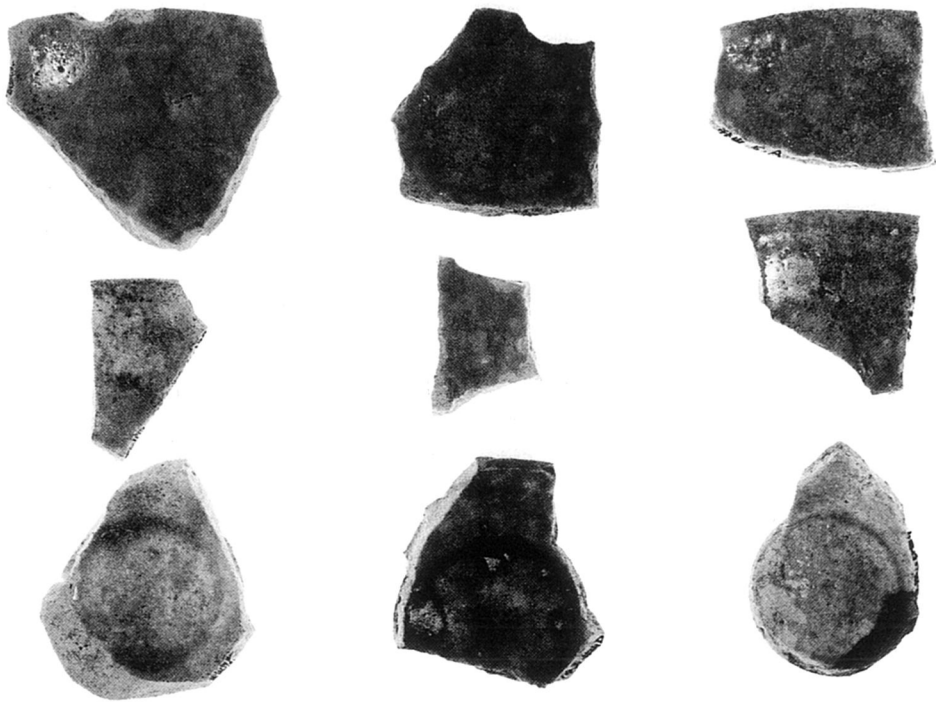
29-5



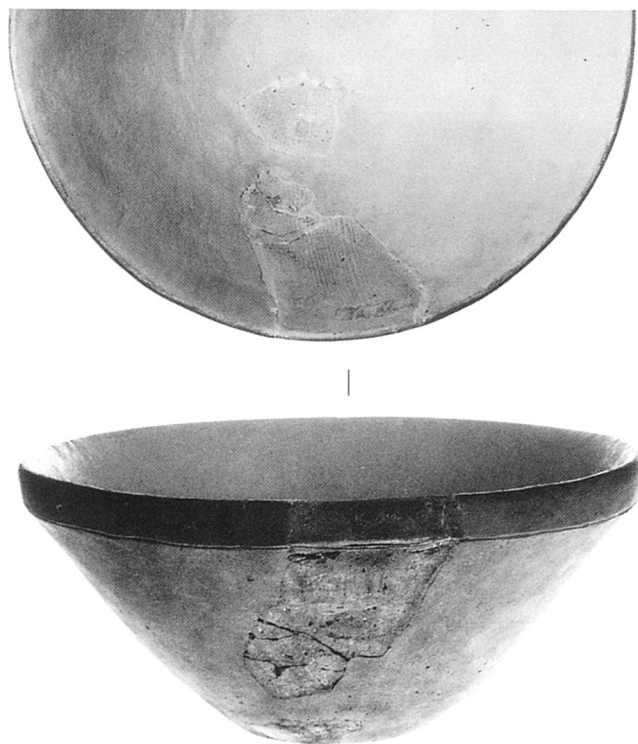
29-2



a. 曲輪 4 出土遺物



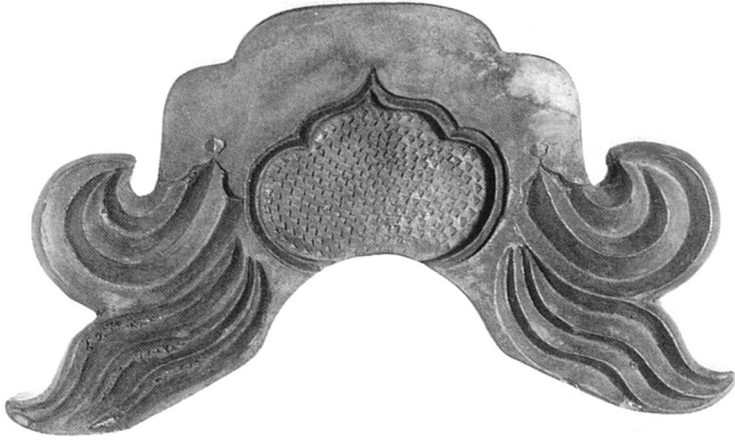
b. 同上、内面



29-10



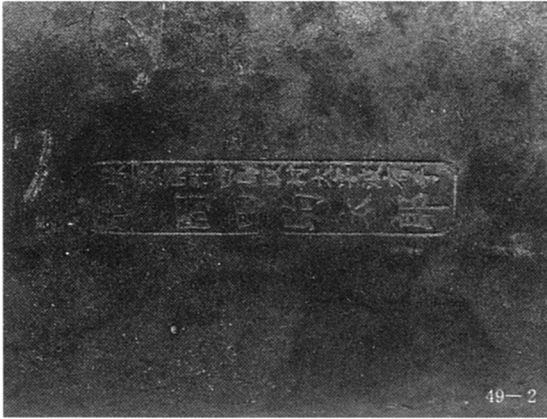
30-1



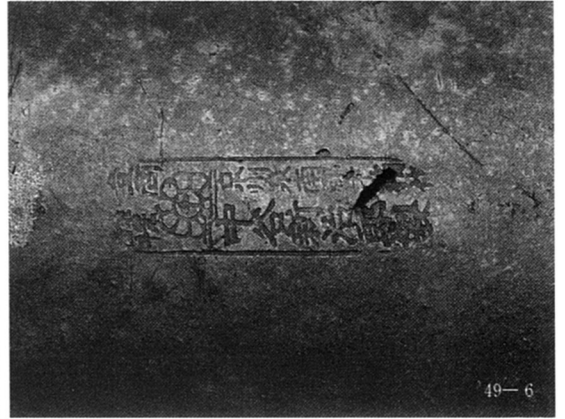
49-1



49-7



49-2



49-6



49-4



49-3



- 49-1 鬼瓦(1:4)
- 49-7 同上 「新村瓦屋惣兵衛」(1:2)
- 49-2 雁振瓦「泉州郡西鳥取村大字波有手
岡田駒太郎」(1:1)
- 49-6 丸瓦 「泉州泉南郡下箱作
中谷新治郎製」(1:1)
- 49-4 平瓦 「泉州瓦工業□□□
久堀正夫」(1:1)
- 49-3 棧瓦 「泉州郡下莊村貝掛
久堀製」(1:1)
- 49-5 軒棧瓦「草竹鶴太郎」(1:1)



51-13



51-15



51-9



51-6



51-11



51-12



51-14



51-5



51-10



51-8



51-7



51-3



51-4



51-18



51-17



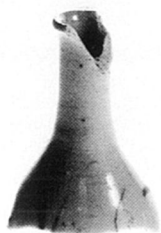
51-16



51-1



51-19



51-20



51-22



51-21

1



2



3





55-1



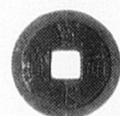
55-2



55-3



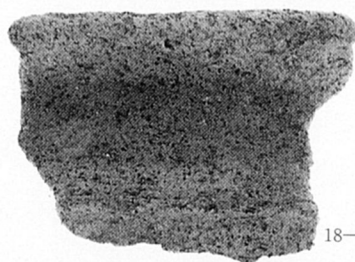
55-4



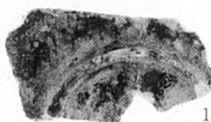
石祠出土遺物



18-9



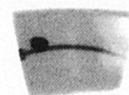
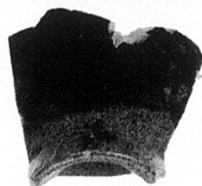
18-1



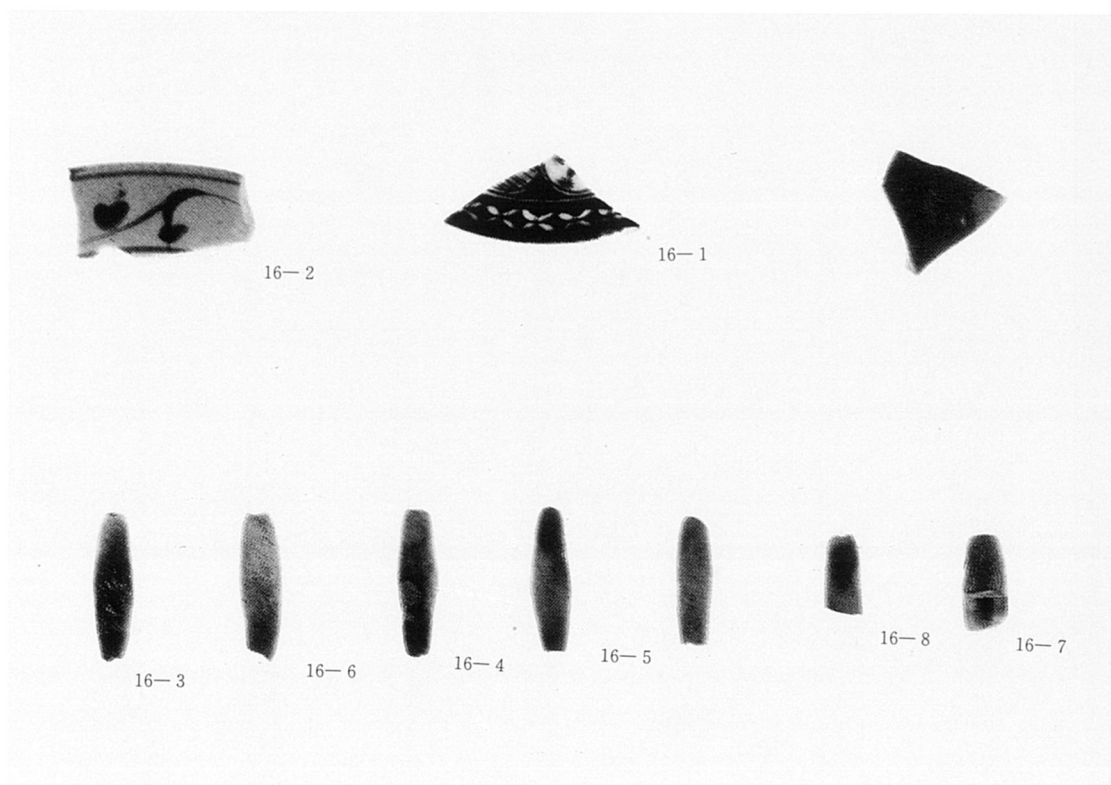
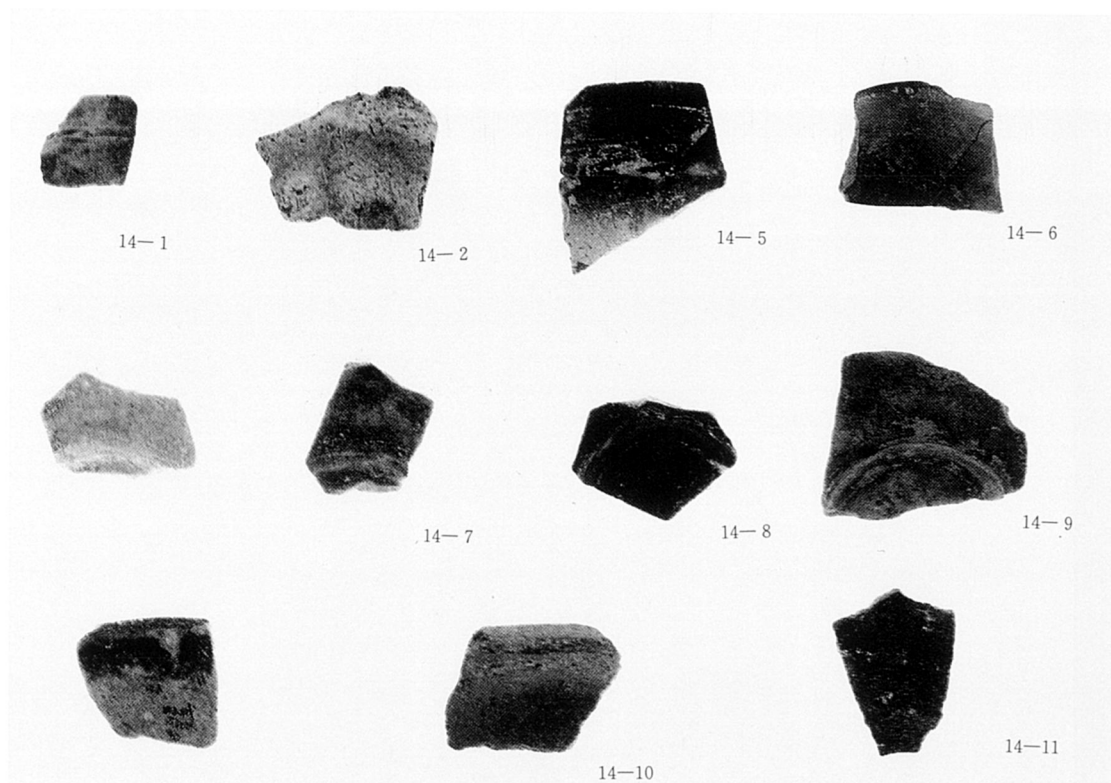
18-2



18-4



の場地区出土遺物





1



2



3



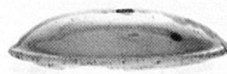
4



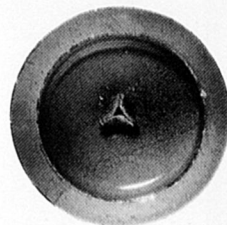
5



6



9



7



8



10



11



12



13



14



15



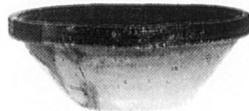
|



16



|



17



18



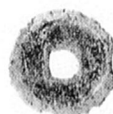
20



19



21



1

2

3

4

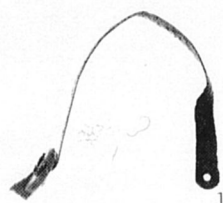


5

6

7

8

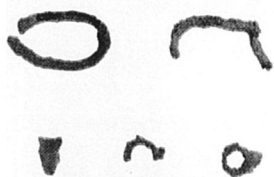


9

10

11

12

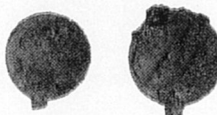


13

14

15

16

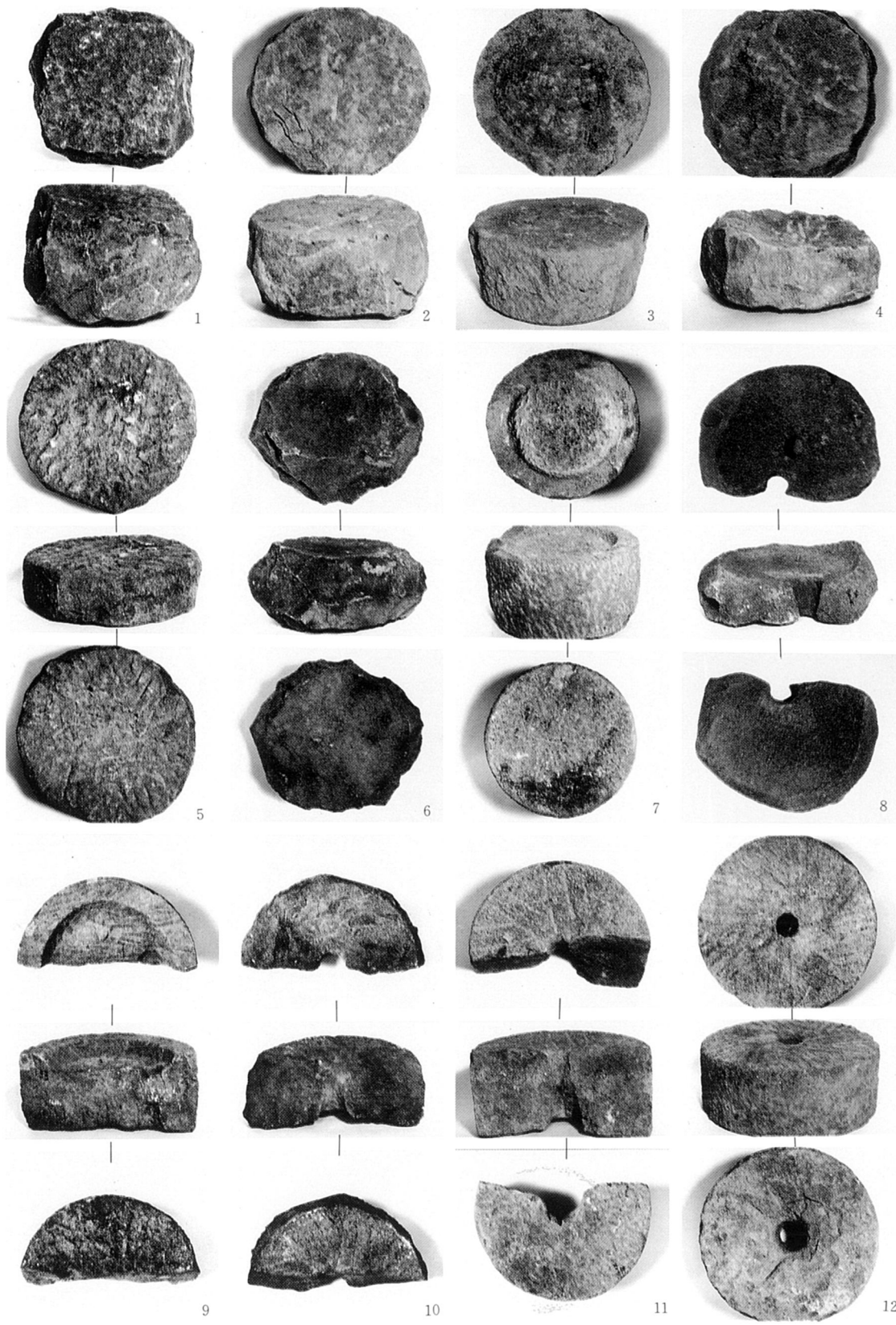


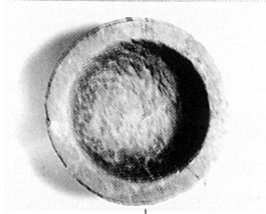
17

18

19

20





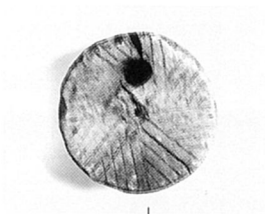
1



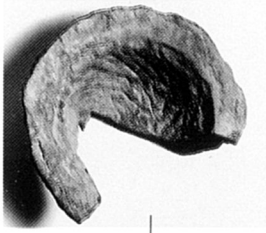
2



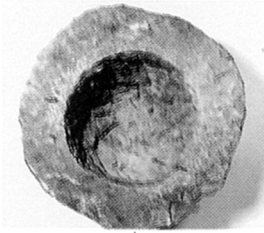
3



4



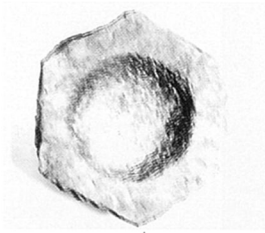
5



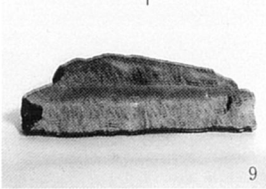
6



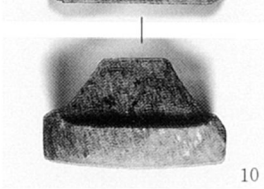
7



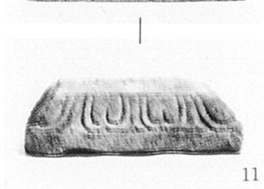
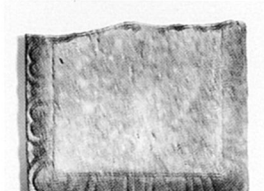
8



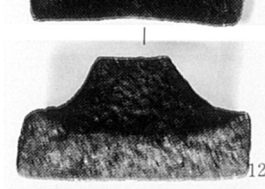
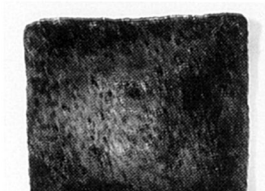
9



10



11



12



13



14



15



16

(財)大阪府埋蔵文化財協会報告書 第20輯

井山城跡 発掘調査報告書

昭和63年 3月31日

編集発行 財団法人 大阪府埋蔵文化財協会
大阪市東区谷町2丁目36番地
大手前ウサミビル5F

印刷 株式会社 中島弘文堂印刷所